

# ADDENDUM



Date: January 24, 2013

Project: BSDC#28 Family Apartment  
New Steam Boiler

To: Bidding Contractors

Project No.: 12029-178

Addendum No.: 2

CC:

This addenda is issued by the Architect/Engineer to all known bidders before receipt of proposals. Bidders shall acknowledge the receipt of this Addendum on their bid form and all information and instructions given herein shall become a part of the Contract Documents.

## GENERAL

**Prior Approvals – If not specifically called out as OR EQUAL under the specified product the following substitutes are acceptable as long as they meet specification; this is not a formal approval that can only be determined at shop drawing/submittal review stage.**

Condensate Return / Feed System	Lockwood
The following items were submitted for prior approval but have NOT been approved.	

## CLARIFICATIONS

1. The engineer's opinion of cost is \$100,000 for the base project.

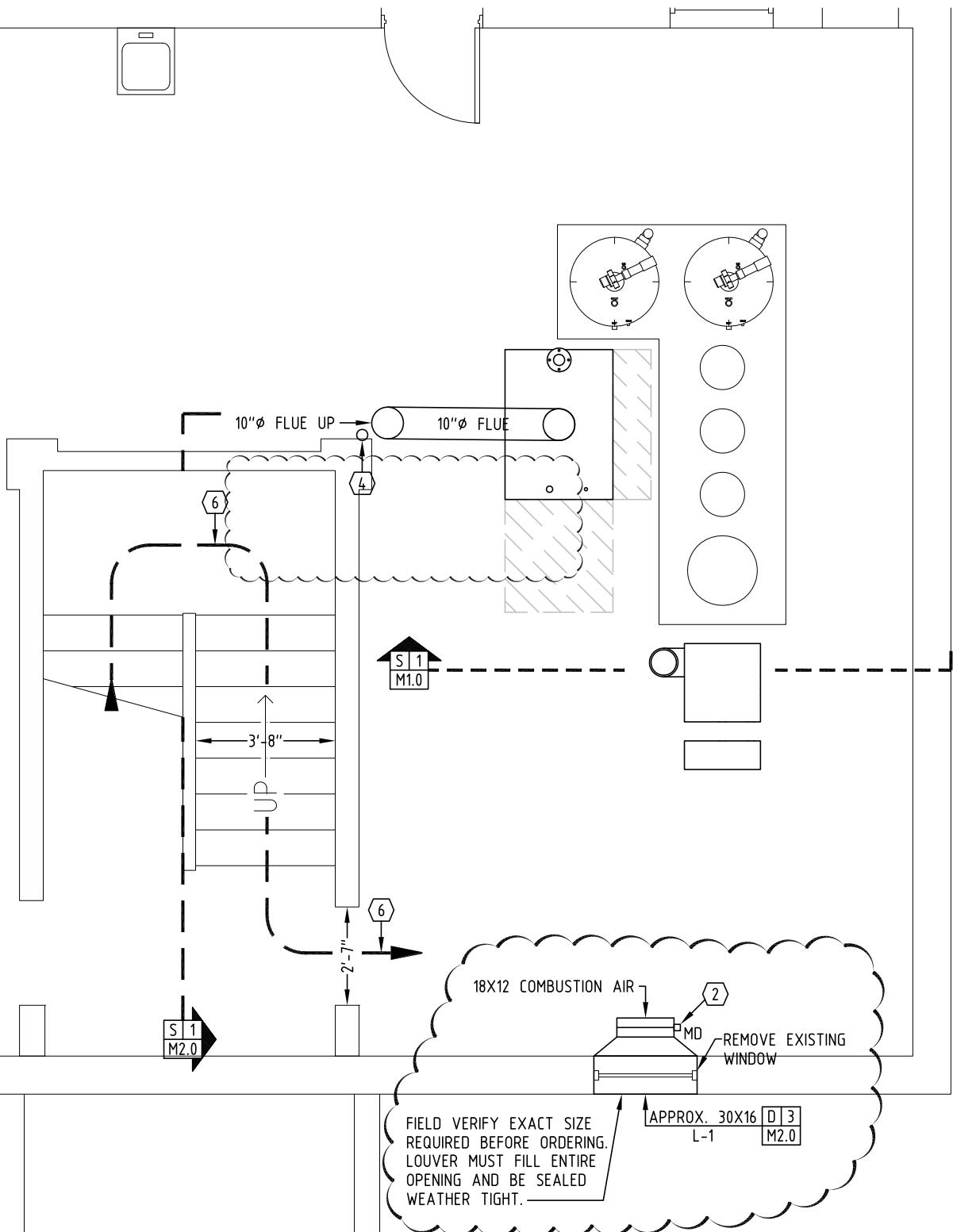
## CHANGES TO PROJECT MANUAL

### Mechanical

#### A. Sheet M2.0

1. Relocate boiler flue, new chases, and combustion air as shown on the attached drawing with revision clouds.
2. Add double bullet under alarms section under sequence of operation to read "Condensate pump failure/alarm".

<b>By:</b>	<b>Date:</b>
Kyle Wilkinson	01/24/13



**BASEMENT HVAC PLAN**

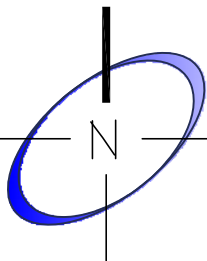
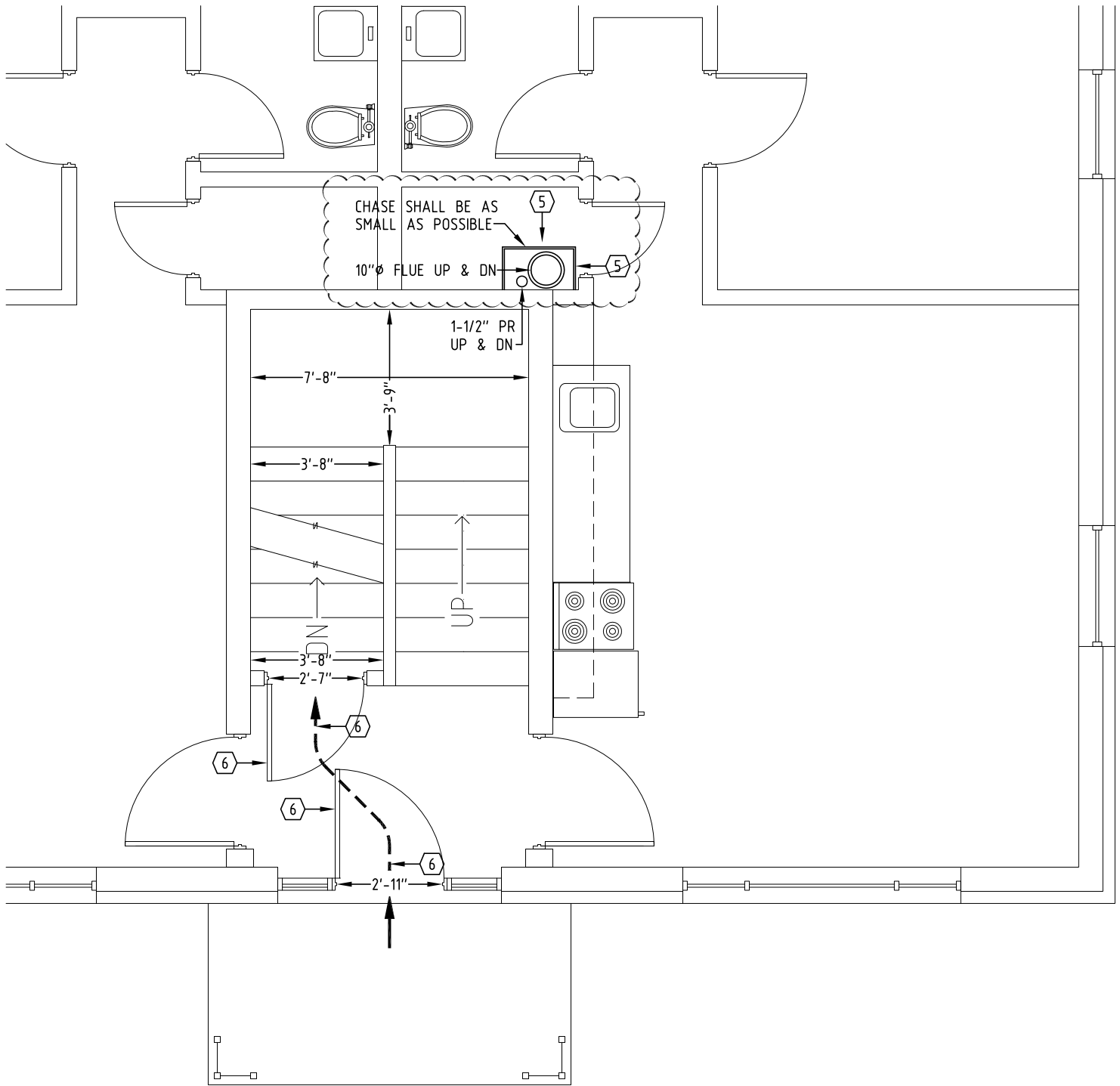
SCALE: 1/4"=1'-0"

4630 Antelope Creek Rd Ste 200 • Lincoln, NE 68506 • P: 402-488-0075 • F: 402-488-0272 • www.a-e-sys.com



PROJECT: BSDC Bldg #28 - Family Apartments  
 PROJECT #: 12-029  
 DATE: 01/24/2013  
 DESCRIPTION: ADDENDUM #2

SHEET:  
**M2.0**  
 NUMBER: 1 of 4



# 1ST FLOOR HVAC PLAN

SCALE: 1/4" = 1'-0"

4630 Antelope Creek Rd Ste 200 • Lincoln, NE 68506 • P: 402-488-0075 • F: 402-488-0272 • www.a-e-sys.com



PROJECT: BSDC Bldg #28 - Family Apartments

SHEET:

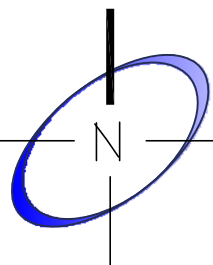
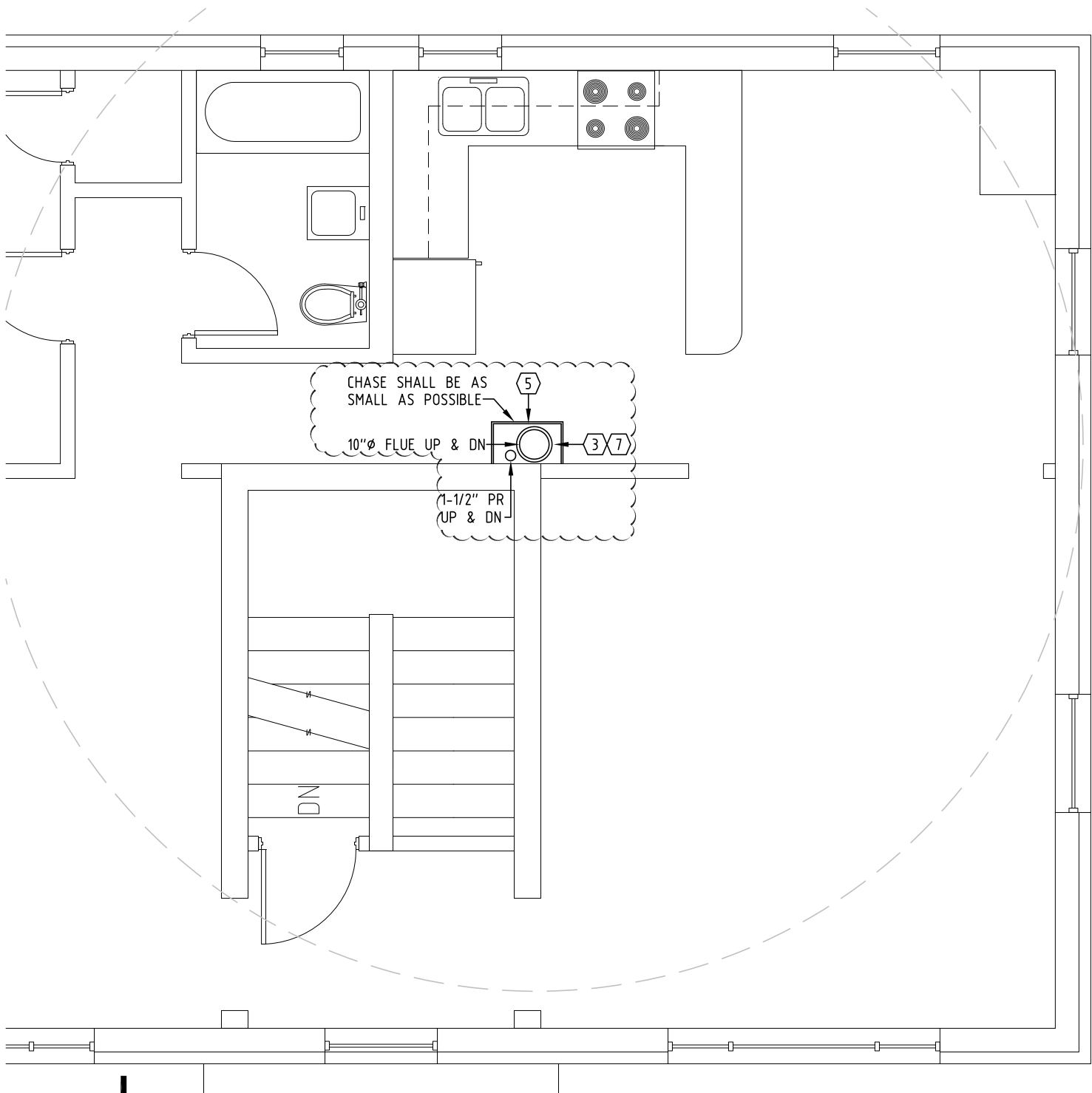
PROJECT #: 12-029

DATE: 01/24/2013

DESCRIPTION: ADDENDUM #2

# M2.0

NUMBER: 2 of 4



# 2ND FLOOR HVAC PLAN

SCALE: 1/4" = 1'-0"

4630 Antelope Creek Rd Ste 200 • Lincoln, NE 68506 • P: 402-488-0075 • F: 402-488-0272 • www.a-e-sys.com



PROJECT: BSDC Bldg #28 - Family Apartments  
 PROJECT #: 12-029  
 DATE: 01/24/2013  
 DESCRIPTION: ADDENDUM #2

SHEET:  
**M2.0**  
 NUMBER: 3 of 4

# HVAC SCHEDULES

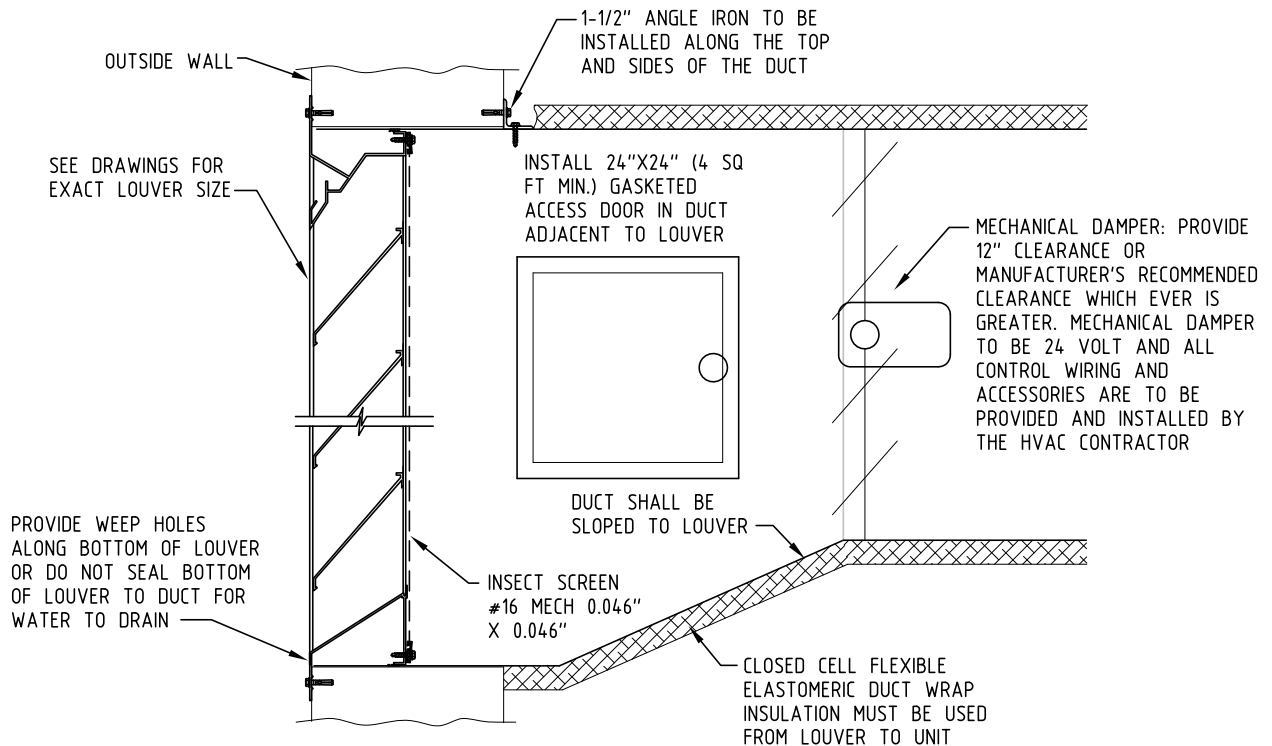
PROVIDE SPECIFIED OR APPROVED EQUAL

## DIFFUSERS, GRILLES, REGISTERS AND LOUVERS

MARK	FIXTURE	MANUFACTURER	MODEL #	DAMPER	FINISH	MOUNTING TYPE	DESCRIPTION AND OPTIONS
L-1	LOUVER	GREENHECK	ESJ-401	-	BY ARCHITECT	SURFACE MOUNT	EXTRUDED ALUMINUM, HORIZONTAL BLADES AT 45°, BIRD SCREEN, RAIN RESISTANT, PROVIDE SIZE AS SHOWN ON DRAWINGS.

### DIFFUSERS, GRILLES, REGISTERS AND LOUVERS SCHEDULE NOTES

- COORDINATE FINISH COLOR WITH ENGINEER, LOCATION AND MOUNTING TYPE FOR ALL REGISTER, GRILLES AND DIFFUSERS WITH GENERAL CONTRACTOR PRIOR TO ORDERING.



## D 3 LOUVER CONNECTION DETAIL

M2.0 SCALE: NONE

