

This addendum is issued by the Owner to all known bidders prior to receipt of Proposal. Bidders shall acknowledge receipt of this Addendum by so indicating on the Proposal Form. All information and instruction given herein shall become a part of the Contract Documents.

This addendum contains the following information:

Addendum #3		1 Sheet
E3.2c Electrical Supplemental drawing	(8.5x11)	1 Sheet
E3.2d Electrical Supplemental drawing	(8.5x11)	1 Sheet
E2.2 Revised drawing	(24x36)	1 Sheet
	Total	4 sheets

If this addendum issued 12-28-2012 appears incomplete, notify the architect immediately.

GENERAL

1. See below.

MEP DRAWINGS

1. Sheet E2.2 - Kitchen Plan - Power
 - a. See revised sheet E2.2.
2. Sheet E3.2 - Electrical Schedules
 - a. Revise panel schedules per attached sketches E3.2c and E3.2d.

End of Addendum #3

EXISTING LIGHTING PANEL SCHEDULE

LIGHTING PANEL: K	VOLTAGE: 208/120V
RATING: 400A	PHASE: 3
MOUNTING: SURFACE	WIRE: 4
TYPE: MCB W/FEED THRU LUGS AND GND. BAR	A.I.C. RATING: SERIES



DESCRIPTION	O/C	CKT.	O/C	DESCRIPTION
DEF-1	20/1	1 2	20/1	SODA CARBONATOR
DISHWASHER	60/3	3 4	20/1	SODA CARBONATOR
---	---	5 6	20/1	LIQUOR DISPLAY (GFCI BKR)
---	---	7 8	15/2	ICE MAKER
GLASS WASHER	30/3	9 10	---	---
---	---	11 12	20/1	CABINET-REFRIGERATED (GFCI BKR)
---	---	13 14	20/1	LIQUOR DISPLAY (GFCI BKR)
CABINET-REFRIGERATED (GFCI BKR)	20/1	15 16	20/1	CABINET-REFRIGERATED (GFCI BKR)
REFRIGERATOR (GFCI BKR)	20/1	17 18	20/1	MICROWAVE (GFCI BKR)
FREEZER (GFCI BKR)	20/1	19 20	20/1	TEA BREWER
MICROWAVE (GFCI BKR)	20/1	21 22	20/1	ESPRESSO
REFRIGERATOR (GFCI BKR)	20/1	23 24	20/1	FOOD WARMER (GFCI BKR)
HEATED WELL (GFCI BKR)	20/1	25 26	20/1	FOOD WARMER (GFCI BKR)
REFRIGERATOR (GFCI BKR)	20/1	27 28	20/1	FOOD WARMER (GFCI BKR)
FREEZER (GFCI BKR)	20/1	29 30	20/1	FOOD WARMER (GFCI BKR)
REFRIGERATOR (GFCI BKR)	20/1	31 32	20/2	SERVING COUNTER
MICROWAVE (GFCI BKR)	20/1	33 34	---	---
EXISTING PANEL K3	100/3	35 36	20/1	OVERSHELF REC
---	---	37 38	20/1	OVERSHELF REC
---	---	39 40	20/1	OVERSHELF REC
FREEZER (GFCI BKR)	20/1	41 42	20/1	OVERSHELF REC

NOTES:

- PANEL CONTAINS THIRTEEN (13) EXISTING 20/1, TWO (2) EXISTING 20/2, ONE (1) EXISTING 30/2, ONE (1) EXISTING 35/2, ONE (1) EXISTING 100/3 SERVING 3RD TUB, ONE (1) EXISTING 15/3, THREE (3) EXISTING 20/3, ONE (1) EXISTING 40/3, AND ONE (1) EXISTING 30/3 CIRCUIT BREAKERS. REUSE CIRCUIT BREAKERS MADE SPARE BY DEMOLITION. PROVIDE ADDITIONAL NEW CIRCUIT BREAKERS AS INDICATED.



mechanical | electrical | technology | commissioning

4940 North 118th Street
Omaha, NE 68164

P: 402.491.4144

www.morrisseyengineering.com

Salt 88
3619-3623 No. 129th St.
Omaha, NE

project no.: 12233

drawing referenced: E3.2

date: 2012/12/28

addendum no.: 3

sketch

E3.2c

EXISTING LIGHTING PANEL SCHEDULE (2ND TUB)

LIGHTING PANEL: K	VOLTAGE: 208/120V
RATING: 400A	PHASE: 3
MOUNTING: SURFACE	WIRE: 4
TYPE: MLO W/FEED THRU LUGS AND GND. BAR	A.I.C. RATING:



DESCRIPTION	O/C	CKT.	O/C	DESCRIPTION
STONE HEARTH OVEN	20/1	43 44	20/2	MIXER
SPARE	20/1	45 46	---	---
SLICER	20/1	47 48	20/1	MXER
TILT SKILLET	30/3	49 50	20/1	REFRIGERATOR (GFCI BKR)
---	---	51 52		SPACE
---	---	53 54	20/1	HOOD LIGHTS
SHUNT TRIP	---	55 56	15/2	WALK-IN FREEZER
WALK-IN COOLER	15/1	57 58	---	---
COOLER CONDENSING UNIT	15/2	59 60	35/2	FREEZER CONDENSING UNIT
---	---	61 62	---	---
KEF-1	30/3	63 64	20/1	LTG - FREEZER
---	---	65 66	20/1	LTG - COOLER
---	---	67 68	30/3	KMUA-1
GWH-1	20/1	69 70	---	---
GWH-2	20/1	71 72	---	---
EH-1	30/2	73 74	30/2	EH-2
---	---	75 76	---	---
REFRIGERATOR (GFCI BKR)	20/1	77 78	20/1	REC - ENTRY
DOUGH ROLLER (GFCI BKR)	20/1	79 80	20/1	REC - HALL, MENS, WOMENS
COFFEE GRINDER	20/1	81 82	20/1	DRAWER WARMER (GFCI BKR)
DOOR HEAT TAPE	20/1	83 84	20/1	SPARE

NOTES:

- TUB 2 - 200/3 SUBFEED PANEL CONTAINS THIRTY-FOUR (34) EXISTING 20/1, ONE (1) EXISTING 20/2, AND ONE (1) EXISTING 40/3 CIRCUIT BREAKERS. REUSE CIRCUIT BREAKERS MADE SPARE BY DEMOLITION. PROVIDE ADDITIONAL NEW CIRCUIT BREAKERS AS INDICATED.



mechanical | electrical | technology | commissioning

4940 North 118th Street
Omaha, NE 68164

P: 402.491.4144

www.morrisseyengineering.com

Salt 88
3619-3623 No. 129th St.
Omaha, NE

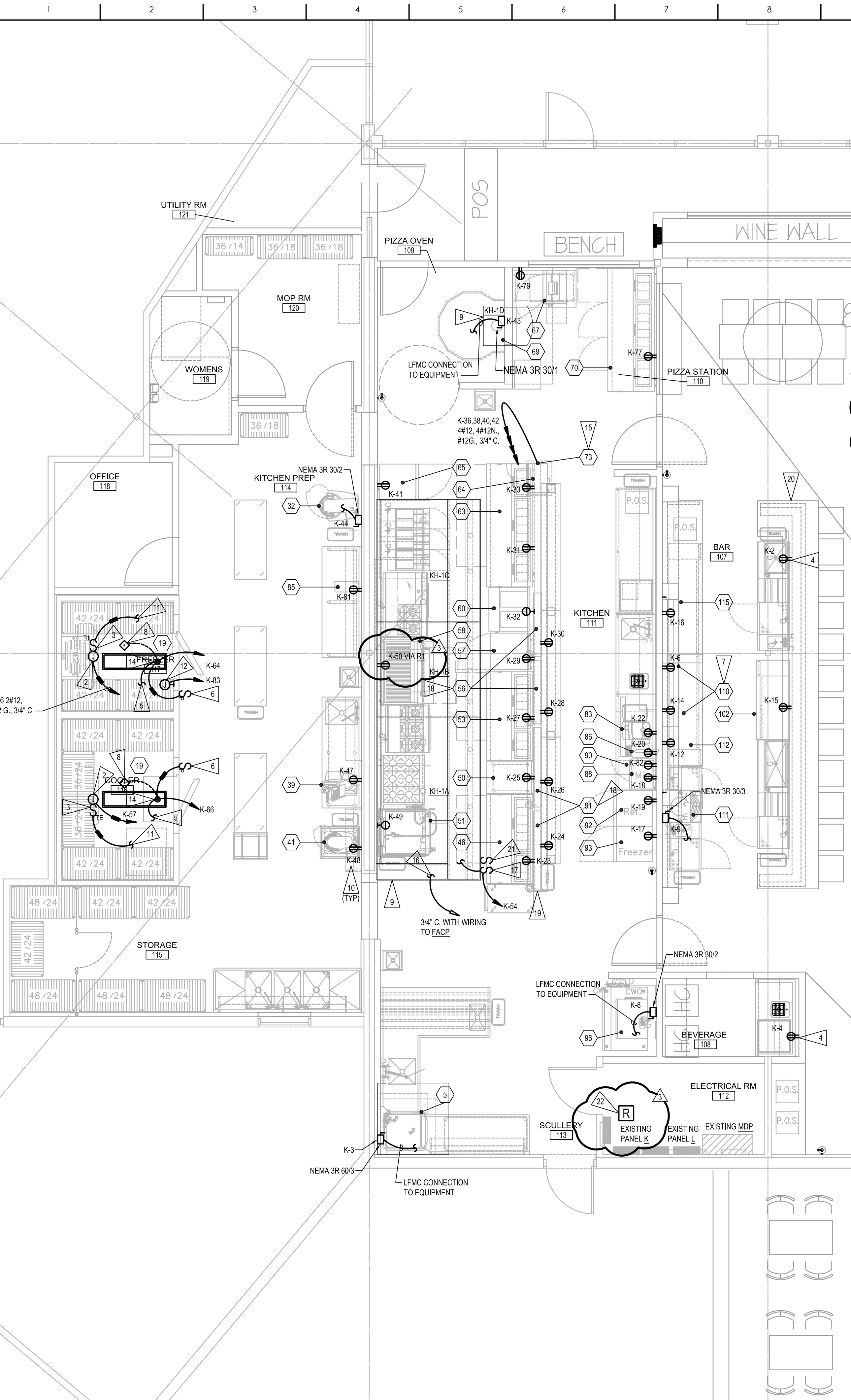
project no.: 12233

drawing referenced: E3.2

date: 2012/12/28

addendum no.: 3

sketch **E3.2d**



KITCHEN EQUIPMENT CONNECTION SCHEDULE

MARK	ITEM	VOLTAGE	PH	HP (KW)	AMPS	BREAKER	CONNECTION	RECEPTACLE CONFIGURATION	MOUNTING HEIGHT	WIRE	GROUND WIRE	CONDUIT	REMARKS
4	DEF-1 (DISHWASHER)	115	1	1/2	8	20/1	X			#12	#12	1/2"	NOTE 2
5	DISHWASHER	208	3	2	45.4	60/3	X		24"	#6	#10	3/4"	
19	WALK-IN COOLER/ FREEZER						X						
19	WALK-IN COOLER/ FREEZER						X						
32	MIXER	200	1	1.5	9.3	20/2	X		44"	#12	#12	1/2"	
39	SLICER	120	1	1/2	2.5	20/1	X	5-20P	48"	#12	#12	1/2"	GFCI
41	MIXER	120	1	1/2	8	20/1	X	5-20P	30"	#12	#12	1/2"	GFCI
46	REFRIGERATOR, PREP	115	1	1/3	8.6	20/1	X	5-15P	18"	#12	#12	1/2"	GFCI BKR
48	KEF-1 (KITCHEN)	208	3	5	14.1	30/3	X			#10	#10	3/4"	NOTE 2
50	DROP-IN HOT FOOD	120	1	(1.2)	10	20/1	X	5-15P	30"	#12	#12	1/2"	GFCI BKR
51	TILT SKILLET	208	3	(9)	25	30/3	X	15-60P	30"	#10	#10	1"	S.T. BR.
53	REFRIGERATOR, PREP	115	1	1/3	8.6	20/1	X	5-15P	18"	#12	#12	1/2"	GFCI BKR
56	WARMER, FOOD OVERHEAD	120	1	(0.8)	6.7	20/1	X	5-15P	40"	#12	#12	1/2"	GFCI BKR
56	WARMER, FOOD OVERHEAD	120	1	(0.8)	6.7	20/1	X	5-15P	40"	#12	#12	1/2"	GFCI BKR
57	FREEZER, UNDERCOUNTER	115	1	1/3	3.2	20/1	X	5-15P	18"	#12	#12	1/2"	GFCI BKR
58	REFRIGERATOR, EQUIP. STAND	115	1	1/3	8.1	20/1	X	5-15P	18"	#12	#12	1/2"	GFCI BKR
60	SERVING COUNTER HOT FOOD	208	1	(1.9)	9.1	20/2	X	6-15P	30"	#12	#12	1/2"	
63	REFRIGERATOR, PREP	115	1	1/2	9.7	20/1	X	5-15P	18"	#12	#12	1/2"	GFCI BKR
64	OVEN MICROWAVE	120	1	(1)	13	20/1	X	5-15P	40"	#12	#12	1/2"	GFCI BKR
65	FREEZER, REACH-IN	115	1	1/3	7.2	20/1	X	5-15P	30"	#12	#12	1/2"	GFCI BKR
67	DOUGH ROLLER	115	1	3/4	11	20/1	X	5-20P	30"	#12	#12	1/2"	GFCI BKR
69	STONE HEARTH OVEN	120	1	-	1.1	20/1	X		30"	#12	#12	1/2"	
70	REFRIGERATOR, PREP	115	1	1/2	9.7	20/1	X	5-15P	18"	#12	#12	1/2"	GFCI BKR
73	OVERSHELF, RECEPTACLE	120	1	-	-	20/1	X			#12	#12	1/2"	
73	OVERSHELF, RECEPTACLE	120	1	-	-	20/1	X			#12	#12	1/2"	
73	OVERSHELF, RECEPTACLE	120	1	-	-	20/1	X			#12	#12	1/2"	
73	OVERSHELF, RECEPTACLE	120	1	-	-	20/1	X			#12	#12	1/2"	
78	SODA DISPENSER	120	1	-	-	20/1	X	5-20P	18"	#12	#12	1/2"	
78	SODA DISPENSER	120	1	-	-	20/1	X	5-20P	18"	#12	#12	1/2"	
83	ESPRESSO	110	1	(1.3)	13	15/1	X	5-15P	48"	#12	#12	1/2"	GFCI
85	COFFEE GRINDER	120	1	1/2	8	20/1	X	5-20P	48"	#12	#12	1/2"	GFCI
86	TEA BREWER	120	1	(1.7)	14	20/1	X	5-15P	48"	#12	#12	1/2"	GFCI
88	OVEN MICROWAVE	120	1	(1.5)	13	20/1	X	5-15P	48"	#12	#12	1/2"	GFCI BKR
90	DRAWER WARMER	120	1	-	7.5	20/1	X	5-15P	18"	#12	#12	1/2"	GFCI BKR
91	WARMER, OVERHEAD	120	1	(1.05)	8.8	20/1	X	5-15P	40"	#12	#12	1/2"	GFCI BKR
91	WARMER, OVERHEAD	120	1	(1.05)	8.8	20/1	X	5-15P	40"	#12	#12	1/2"	GFCI BKR
92	FREEZER, REACH-IN	115	1	1/3	7.2	20/1	X	5-15P	30"	#12	#12	1/2"	GFCI BKR
93	REFRIGERATOR, REACH-IN	115	1	1/3	7.6	20/1	X	5-15P	30"	#12	#12	1/2"	GFCI BKR
96	ICE MAKER	208	1	-	10.2	15/2	X		60"	#12	#12	1/2"	
102	CABINET, REFRIGERATED	120	1	1/4	6.5	20/1	X	5-15P	18"	#12	#12	1/2"	GFCI BKR
110	LIQUOR DISPLAY	115	1	-	5	20/1	X	5-20P	44"	#12	#12	1/2"	GFCI BKR
110	LIQUOR DISPLAY	115	1	-	5	20/1	X	5-20P	44"	#12	#12	1/2"	GFCI BKR
111	GLASS WASHER	208	3	-	30	30/3	X		12"	#10	#10	3/4"	NOTE 3
112	CABINET, REFRIGERATED	120	1	1/4	6.5	20/1	X	5-15P	18"	#12	#12	1/2"	GFCI BKR
115	CABINET, REFRIGERATED	120	1	1/4	6.5	20/1	X	5-15P	18"	#12	#12	1/2"	GFCI BKR

- NOTES:
1. VERIFY EQUIPMENT LOCATIONS AND POWER CONNECTIONS INCLUDING VOLTAGE, PHASE, BREAKER, CONDUCTOR, CONDUIT AND RECEPTACLE CONFIGURATION WITH KITCHEN EQUIPMENT SUPPLIER PRIOR TO ROUGH-IN.
 2. REFER TO SHEET E2.1 FOR EQUIPMENT LOCATION.
 3. PROVIDE #10 N. WIRE TO EQUIPMENT.

- GENERAL NOTES
1. MINIMUM SIZE FOR BRANCH CIRCUIT CONDUITS SHALL BE 1/2" SEE DRAWINGS FOR AREAS WHERE LARGER CONDUITS ARE REQUIRED.
 2. PROVIDE A DEDICATED NEUTRAL CONDUCTOR FOR EACH BRANCH CIRCUIT.
 3. PROVIDE A GREEN INSULATED GROUND WIRE IN ALL LIGHTING AND POWER BRANCH CIRCUITS.
 4. SEE "KITCHEN EQUIPMENT SCHEDULE" ON THIS SHEET FOR ELECTRICAL CONNECTION INFORMATION.
 5. COORDINATE ALL ELECTRICAL INSTALLATIONS WITH KITCHEN EQUIPMENT SUPPLIER.
 6. ALL KITCHEN RECEPTACLES SHALL BE GFI TYPE NEC 210.8.B.

- FLAG NOTES
1. NOT USED
 2. CONNECT EVAPORATOR AND ASSOCIATED CONTROLLER.
 3. 20A SINGLE POLE THERMAL ELEMENT TOGGLE SWITCH FOR EVAPORATOR DISCONNECT. PROVIDE WEATHERPROOF SILICONE-TYPE SWITCH COVER. PROVIDE 15A OVERLOAD. COORDINATE OVERLOAD WITH MANUFACTURER'S NAMEPLATE.
 4. PROVIDE 120V POWER CONNECTION FOR SODA DISPENSER CARBONATOR. VERIFY EXACT LOCATION OF SODA DISPENSER WITH EQUIPMENT SUPPLIER PRIOR TO ROUGH-IN.
 5. CONNECT 120V PRESSURE-RELIEF POWER.
 6. CONNECT TO SWITCH INTEGRAL TO EQUIPMENT.
 7. VERIFY EQUIPMENT LOCATION. COORDINATE RECEPTACLE LOCATION WITH EQUIPMENT.
 8. CONNECT OCCUPANCY SENSOR FURNISHED WITH WALK-IN PER MANUFACTURER'S INSTRUCTIONS.
 9. CONTRACTOR TO VERIFY FINAL EQUIPMENT LOCATED BELOW EXHAUST HOOD. PROVIDE SHUNT TRIP BREAKER IN PANEL 'K' FOR ANY ELECTRICAL EQUIPMENT BELOW EXHAUST HOOD. INTERLOCK SHUNT TRIP BREAKER(S) WITH HOOD EXTINGUISHING SYSTEM FOR EQUIPMENT DISCONNECTION IN EVENT OF ALARM.
 10. CONNECT DEVICE TO RESPECTIVE CIRCUIT IN PANEL INDICATED.
 11. CONTROL WIRING IN 3/4" C. BETWEEN UNITS PER MANUFACTURER'S INSTRUCTIONS. REFER TO SHEET E2.2 FOR UNIT LOCATION.
 12. CONNECT DOOR HEAT TAPE.
 13. NOT USED
 14. INSTALL AND CONNECT LIGHT FIXTURE FURNISHED WITH WALK-INS. PROVIDE 1/2" RIGID NIPPLE (LENGTH AS REQ'D) FROM JUNCTION BOX OUTSIDE OF FREEZER, THROUGH FREEZER WALL TO LIGHT FIXTURE. FILL NIPPLE WITH THIKOLK TO PREVENT PASSAGE OF AIR AFTER WIRE IS RUN.
 15. PROVIDE DIRECT CONNECTION TO RECEPTACLE FURNISHED WITH KITCHEN EQUIPMENT. ROUTE CONNECTIONS THROUGH FURNISHED EQUIPMENT CHASE TO CEILING. VERIFY LOCATION OF EACH FURNISHED CHASE AND RECEPTACLE FOR EACH PIECE OF SHELVING EQUIPMENT PRIOR CONNECTING.
 16. PROVIDE CONNECTION TO HOOD ANSUL SYSTEM. CONNECT TO FACP. SYSTEM SHALL GO INTO ALARM UPON ACTIVATION OF HOOD SUPPRESSION.
 17. PROVIDE TOGGLE SWITCH ON HOOD FACE ADJACENT TO FAN SWITCH. CONNECT TO LIGHTS FURNISHED WITH HOOD. PROVIDE PLAQUE 'LIGHTS'.
 18. VERIFY RECEPTACLE LOCATION WITH THE EQUIPMENT CORD AND PLUG LOCATION PRIOR TO ROUGH-IN.
 19. PARTIAL HEIGHT WALL. ROUTE CONDUITS TO DEVICES UNDERFLOOR. SAW CUT AND PATCH FLOOR FOR CONDUIT INSTALLATION.
 20. INSTALL CONDUITS TO BAR DEVICES UNDERFLOOR. SAW CUT AND PATCH FLOOR FOR CONDUIT INSTALLATION.
 21. INTERLOCK KEF-1 AND ASSOCIATED KMAL-1 AND CONTROL WITH TOGGLE SWITCH FURNISHED ON HOOD FACE. PROVIDE PLAQUE 'FAN'.
 22. 120V RELAY R1. CONNECT RELAY TO ANSUL SYSTEM. RELAY SHALL OPEN UPON ACTIVATION OF FIRE SUPPRESSION.

MEI PROJECT NO.: 12233

morrissey engineering inc.
mechanical | electrical | technology | commissioning

4940 North 118th Street
Omaha, NE 68164
P: 402.491.4144
www.morrisseyengineering.com

permission to reproduce all or part of this drawing is hereby granted solely for the limited purpose of construction of this project or archiving, unaltered copy. disclosure or construction use without written permission of morrissey engineering, inc. is prohibited by copyright law.

note:
do not scale drawings. verify all dimensions and clearances from architectural, structural, piping and other appropriate drawings or at site. lay out and coordinate all work prior to installation to provide clearances required for operation, maintenance, and codes and verify non-interference with other work. do not fabricate prior to verification of clearance for all trades.

ALLEY POYNER MACCHIETTO ARCHITECTURE
1516 Cuming Street
Omaha, NE 68102
Ph: 402.341.1544
Fx: 402.341.4735
alleypoyner.com

CONSULTANTS

MECHANICAL & ELECTRICAL ENGINEER
MORRISSEY ENGINEERING
4940 N. 118th Street
Omaha, NE 68164
(402) 491-4144 / FAX: (402) 491-4146



ADDENDUM #3	2012-08-21
ADDENDUM #2	2012-12-21
ISSUED FOR CONSTRUCTION	2012-12-07
REVISION	DATE

PROJECT NUMBER: 12118
DATE: 12/07/2012
COPYRIGHT © 2012
ALLEY POYNER MACCHIETTO ARCHITECTURE, P.C.

KITCHEN PLAN - POWER

E2.2