

6115 Maple Street, Omaha, NE

This addendum is issued by the Owner to all known bidders prior to receipt of Proposal. Bidders shall acknowledge receipt of this Addendum by so indicating on the Proposal Form. All information and instruction given herein shall become a part of the Contract Documents.

This addendum contains the following information:

| | | | |
|--|--------|--------------|------------------|
| Addendum #2 | 8.5x11 | 3 | Sheet |
| Architectural Supplemental Drawing – AD2.1 | 8.5x11 | 1 | Sheet |
| Architectural Supplemental Drawing – AD2.2 | 8.5x11 | 1 | Sheet |
| Architectural Supplemental Drawing – AD2.3 | 8.5x11 | 1 | Sheet |
| Mechanical Supplemental Drawing – M1 | 8.5x11 | 1 | Sheet |
| Mechanical Supplemental Drawing – M2 | 8.5x11 | 1 | Sheet |
| Mechanical Supplemental Drawing – M3 & M4 | 8.5x11 | 2 | Sheets |
| Mechanical Supplemental Drawing – M5 | 8.5x11 | 1 | Sheet |
| Mechanical Supplemental Drawing – M6 | 8.5x11 | 1 | Sheet |
| | | Total | 12 Sheets |

If this addendum appears incomplete, notify the architect immediately.

GENERAL INFORMATION

- A. Add new F2 Wall Type. Similar to F4 with 1 ½" Wood studs to structure.
- B. Wiring devices shall be white with white cover plates, except where installed on wood finish. Where installed on wood finish, wiring devices and cover plates shall be black.

DRAWINGS

ARCHITECTURAL DRAWINGS

1. SUPPLEMENTAL DRAWING AD2.1 - SHEET 1.1 –
 - a. Add P4 wall between existing column and wall at edge of stair.
 - b. Add 1 ½" dia. Metal handrail to east wall. Extend 12" from bottom step and 23" from top step.
2. SUPPLEMENTAL DRAWING AD2.2 – SHEET A2.1 –
 - a. Delete note to provide new face brick. Remove face of brick column. Provide new brick to match historic color and texture.
3. SUPPLEMENTAL DRAWING AD2.3 - SHEET A5.1 –
 - a. At West Wall of Women's Toilet - Fur out with Wall Type F2. Finish to match other Toilet Walls.
 - b. Eliminate M8 infill at Women's Toilet windows. Existing wood window to remain. Repair and paint exterior frame. Existing CMU on interior side of windows to remain.

MECHANICAL DRAWINGS

1. Sheet M2.1 Mechanical and Plumbing Plans

- a. See drawing M1, Basement Mechanical, Fire Service Room 001A, for addition of air compressor. Sheet note 39 shall point to fire service on East side, and sheet note 26 shall point to water service on West side.
2. Sheet M2.2 Enlarged Mechanical Plans and Risers
 - a. See drawing M2, mechanical Roof Plan, for adjusted location of RTI-2 and the boiler flue termination. Also see new location of kettle exhaust termination through roof and EF-1, now an upblast fan located on roof. RTI-2 outdoor air intake must be a minimum of 10' away from all exhaust outlets per Mechanical Code.
3. Sheet M3.1 HVAC Plans
 - a. See drawing M3 and M4 for adjusted HVAC in Grain Storage 008 and Brewery 107. Exhaust from Grain Storage shall now be routed through Brewery to roof top mounted fan. Exhaust from the kettles shall now terminate through roof. Boiler flue shall now elbow to East to provide clearance from exterior wall.
4. Sheet M4.1 Mechanical Details
 - a. Detail E24 – Exhaust Fan (EF-1) Detail shall now be omitted from plans.
 - b. See drawing M5, Fire Service Detail L22 shall now have a Dry System zone added.
5. Sheet M4.2 Mechanical Symbols, Schedules, Details
 - a. See drawing M6 for changes made for EF-1.

ELECTRICAL DRAWINGS

1. Sheet E3.1 Power Plans
 - a. Basement Power Plan:
 - i) Fire Service 001A – Provide a 120V, 30A connection to fire sprinkler air compressor to Panel "A", using 2-#10 and #10 gnd in ¾" conduit. Coordinate exact connection requirements and breaker size before rough-in. Provide breaker with lock-on device. Provide additional connection to flow and tamper switch.
 - ii) Grain Storage 008 – Exhaust fan EF-1 is to be located on the roof, reference mechanical plans.
 - iii) Reference riser diagram for connection to glycol system.
 - b. Main Level Power Plan:
 - i) Add a weatherproof bell on exterior of building where directed by fire marshal. Connect with PIV and fire sprinkler system in accordance with code.
 - c. Roof Power Plan:
 - i) RTU-2 has been relocated. Reference mechanical sketches.
2. Sheet E4.1 Electrical Schedules and Riser Diagram
 - a. Panel Schedules:
 - i) Panel "B" – Change breaker for boiler feed pump (BFP) to a 15A, 2 pole.
 - ii) Panel "MDP" – Change to a 600A main breaker, 1200/240V, 3-phase.
 - b. Equipment Connection Schedule:
 - i) Add boiler feed pump (BFP), 230V, 1-phase, 2-#12 gnd in ¾" conduit, 30 amp fused disconnect, direct connection.
 - c. Electrical Riser Diagram:
 - i) Provide CT cabinet as required by OPPD.



PROJECT MANUAL

ARCHITECTURAL SPECIFICATIONS

1. Section 00 8113 HOLLOW METAL DOORS AND FRAMES
 - a. 2.1 A – Add Curries to the approved manufacturers.
2. Section 08 1433 STILE AND RAIL WOOD DOORS
 - a. 2.3 A 1 – Add VT to the approved manufacturers.
3. Section 04 2000 UNIT MASONRY
 - a. 2.7 A 1 – Polyguard 400 TWF by Polyguard Products is and acceptable material.

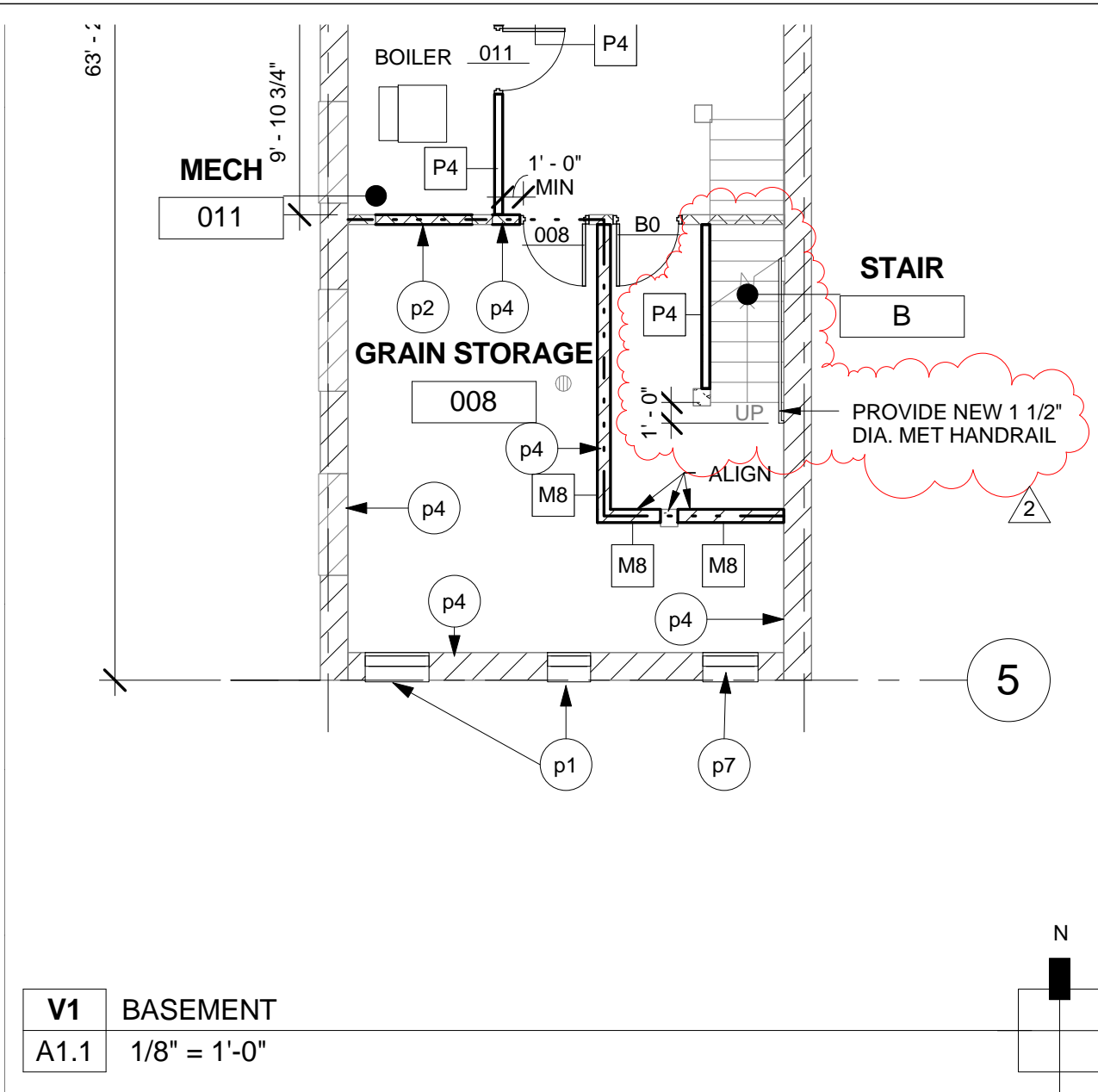
MECHANICAL SPECIFICATIONS

1. Section 21 13 00 – Fire Suppression Sprinkler Systems
 - a. Section 1.1 – Add Part C. “Dry-pipe sprinkler system”
 - b. Section 2.3 – Add Part D. “Dry Sprinklers (where installed in attic): Standard upright type. Brass Finish. Provide fusible link, Glass bulb type temperature rated for specific area hazard. Provide protective cage for sprinkler heads installed in exposed areas.
 - c. Add Section 2.5 – “Air Compressor”, and add Part A under 2.5 to read: “Compressor: Single unit, electric motor driven, motor, motor starter, safety valves, check valves, air maintenance device incorporating electric pressure switch and unloader valve.
 - d. Section 3.1 – Addition to Part B. “The coverage shall include the attic space with wood construction.”

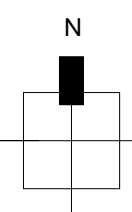
ELECTRICAL SPECIFICATIONS

1. The following manufacturers have received prior approval for bidding purposes subject to shop drawing review:
 - a. Light Fixture Types 7, 7H Halo
 - b. Light Fixture Type 12 io Lighting
 - c. Light Fixture Types 14, 14E Invue
 - d. Light Fixture Type 15 Rig-a-lite
 - e. Light Fixture Type 17 Nulite
 - f. Light Fixture Types 18, 18E Metalux
 - g. Light Fixture Type 19 Sure-lites
2. Section 26 27 26 – Wiring Devices
 - a. Wiring devices shall be white with white cover plates, except where installed on wood finish. Where installed on wood finish, wiring devices and cover plates shall be black

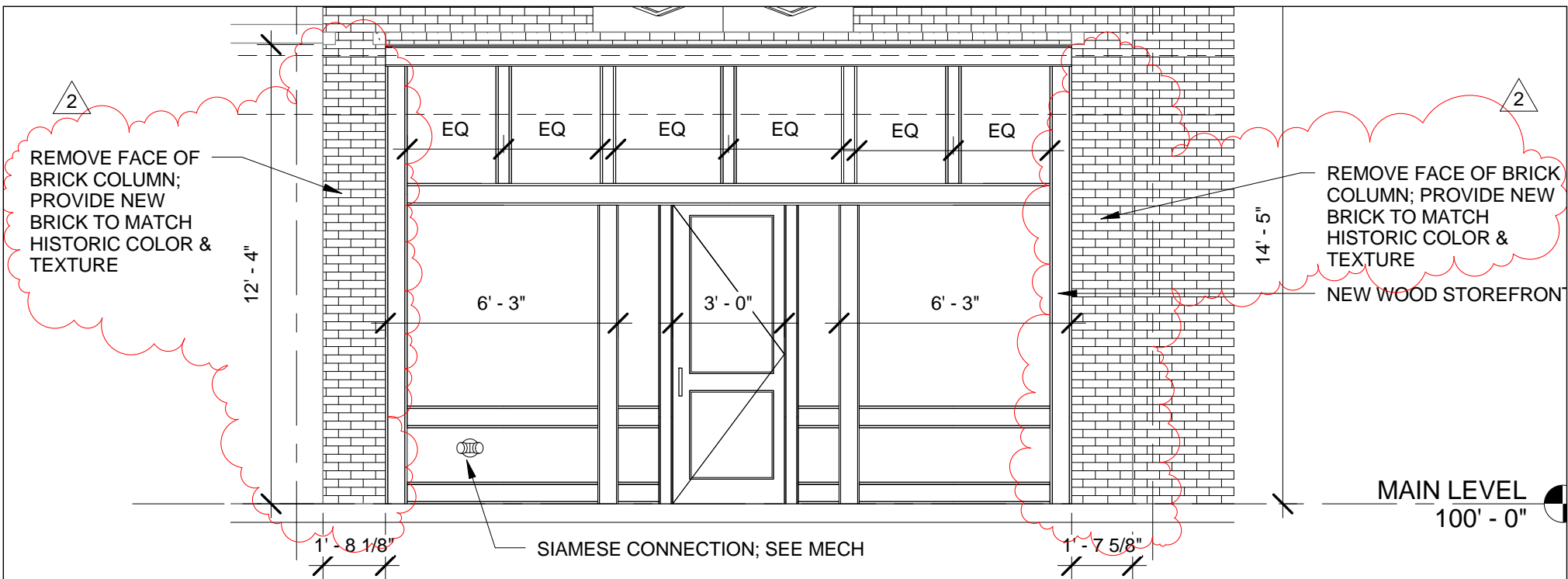
END OF ADDENDUM



| | |
|-------------|---------------------|
| V1 | BASEMENT |
| A1.1 | 1/8" = 1'-0" |



| | | | |
|--|--|--------------|---|
| SHEET REFERENCE: A1.1 | | DWG NO. | ALLEY•POYNER MACCHIETTO ARCHITECTURE 1516 Cuming Street Omaha, NE 68102 Ph: 402.341.1544 Fx: 402.341.4735 alleypoyner.com |
| PROJECT NAME: INFUSION BREWERY | | AD2.1 | |
| PROJECT NUMBER: 12092 | | ADDENDUM #2 | |
| DATE: 12/18/2012 | | | |
| COPYRIGHT 2011 ALL RIGHTS RESERVED PRINTED OR ELECTRONIC DRAWINGS AND DOCUMENTATION MAY NOT BE REPRODUCED IN ANY FORM WITHOUT WRITTEN PERMISSION FROM ALLEY POYNER MACCHIETTO ARCHITECTURE | | | |



V1 NORTH ELEVATION - PROPOSED

A2.1 1/4" = 1'-0"

SHEET REFERENCE: A2.1

PROJECT NAME: INFUSION BREWERY

PROJECT NUMBER: 12092

DATE: 12/18/2012

COPYRIGHT 2011 ALL RIGHTS RESERVED PRINTED OR ELECTRONIC DRAWINGS AND DOCUMENTATION MAY NOT BE REPRODUCED IN ANY FORM WITHOUT WRITTEN PERMISSION FROM ALLEY POYNER MACCHIETTO ARCHITECTURE

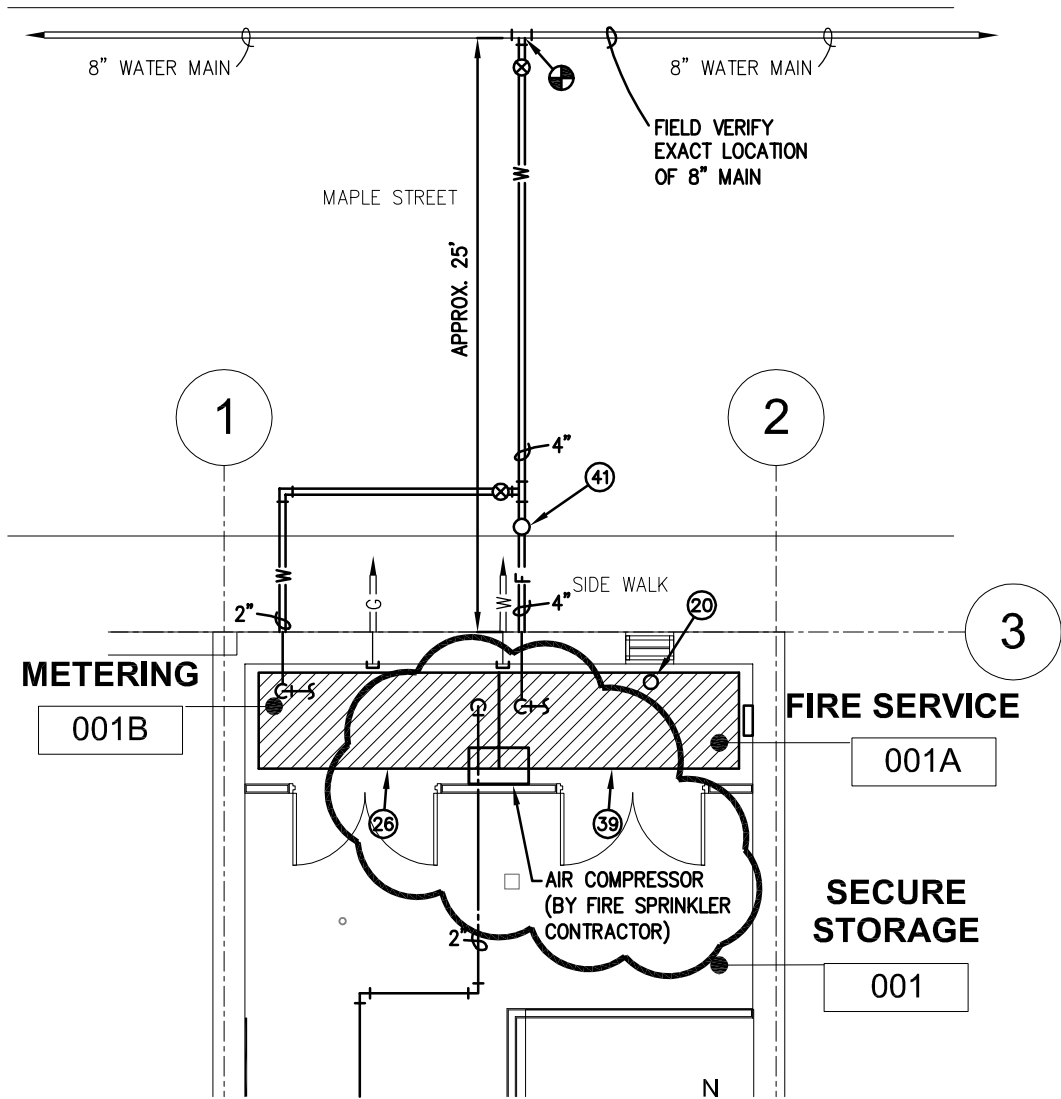
DWG NO.

AD2.2

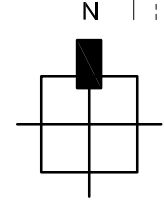
ADDENDUM #2

ALLEY•POYNER
MACCHIETTO
ARCHITECTURE

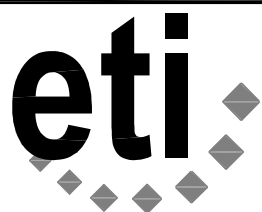
1516 Cuming Street
Omaha, NE 68102
Ph: 402.341.1544
Fx: 402.341.4735
alleypoyner.com



V8 BASEMENT MECHANICAL
M2.1 1/8" = 1'-0"



**INFUSION BREWERY
 PARTIAL BASEMENT
 MECHANICAL PLAN**

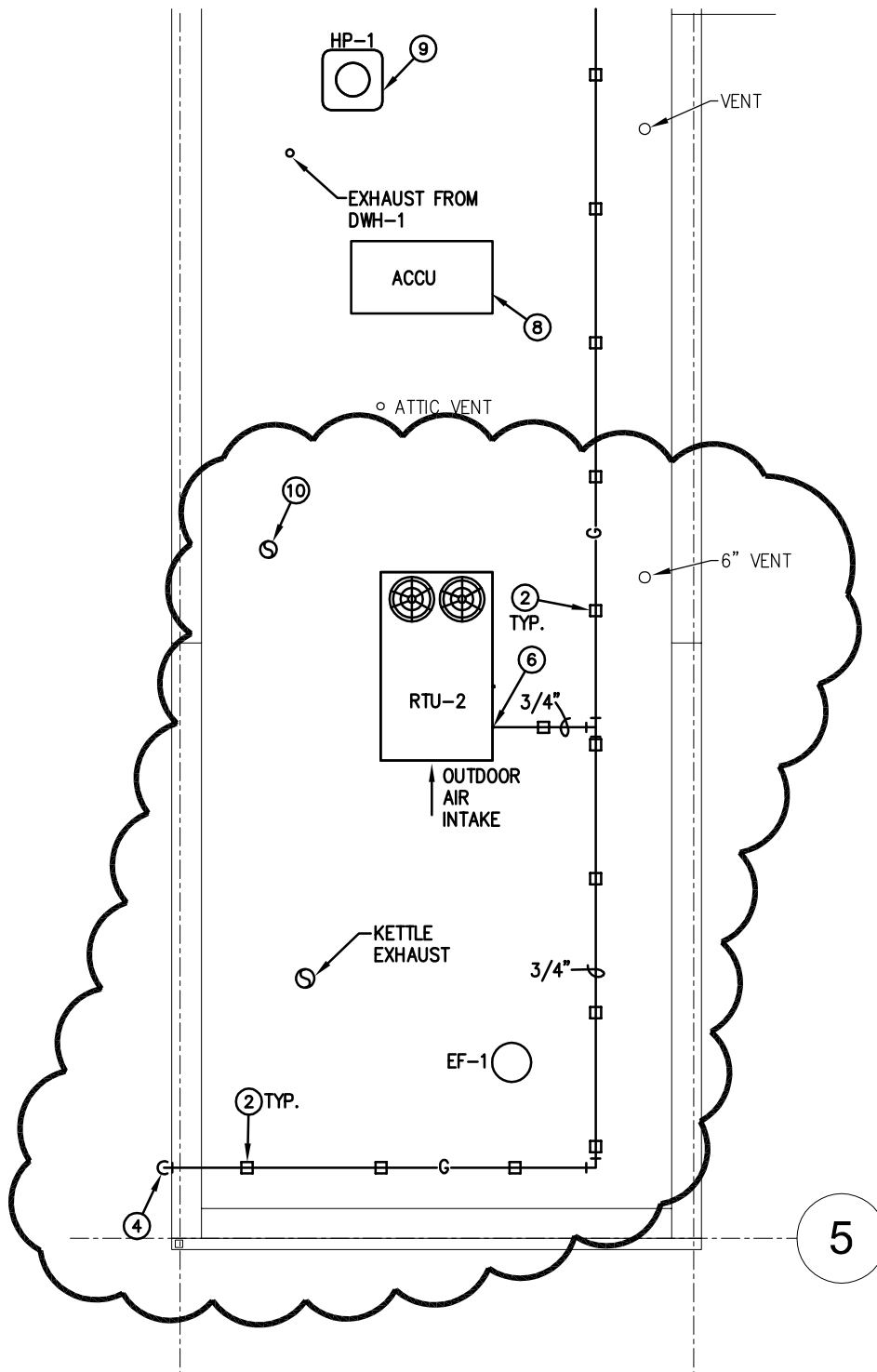


Engineering Technologies Inc.
 Mechanical & Electrical Building Solutions
 4559 South 133rd Street | Omaha, NE 68137
 P 402.330.2772 | F 402.330.2630
 825 M Street, Suite 200 | Lincoln, NE 68508
 P 402.476.1273 | F 402.476.1274
 ETI Project No: (2012-126)

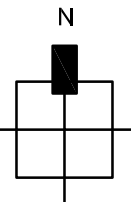
| |
|----------------------|
| 12/18/12 |
| SHEET M2.1 |
| ATTACHMENT NO. M1 |
| RPJ |

SCALE: 1/8" = 1'-0"

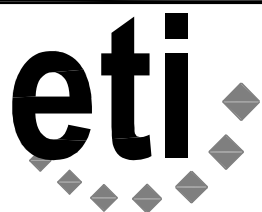
ADDENDUM #2



| | |
|-------------|-----------------------------|
| V1 | MECHANICAL ROOF PLAN |
| M2.2 | 1/8" = 1'-0" |



INFUSION BREWERY
PARTIAL ROOF
MECHANICAL PLAN



Engineering Technologies Inc.
 Mechanical & Electrical Building Solutions
 4559 South 133rd Street | Omaha, NE 68137
 P 402.330.2772 | F 402.330.2630
 825 M Street, Suite 200 | Lincoln, NE 68508
 P 402.476.1273 | F 402.476.1274
 ETI Project No: (2012-126)

| |
|----------------|
| 12/18/12 |
| SHEET |
| M2.2 |
| ATTACHMENT NO. |
| M2 |
| RPJ |

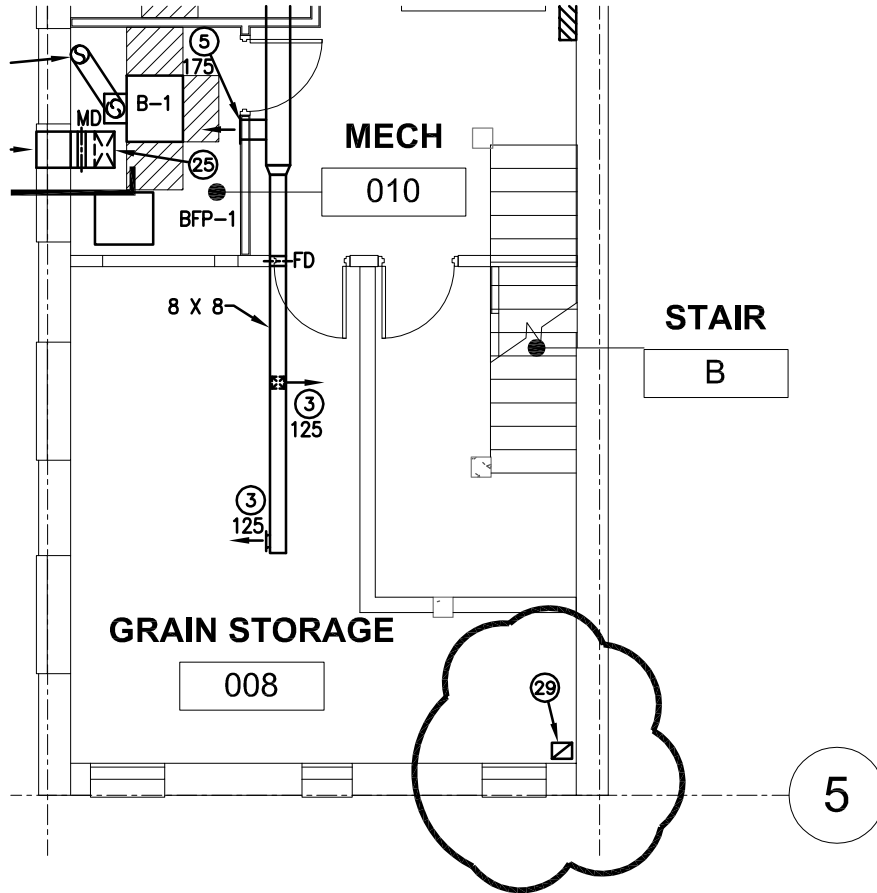
SCALE: 1/8" = 1'-0"

ADDENDUM #2

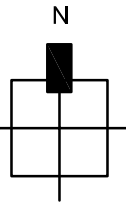
#

ADDITIONAL SHEET NOTE

- 29. 10 X 8 EXHAUST DUCT UP. DUCT SHALL BE OPEN ENDED, AND INSTALLED AS HIGH AS POSSIBLE. COORDINATE DUCT PENETRATION LOCATION WITH GRAIN AUGER. PROVIDE FIRE DAMPER AT CEILING PENETRATION. PROVIDE 8 X 8 FIELD FABRICATED ACCESS DOOR IF DAMPER IS UNABLE TO BE RE-SET AT OPENING..



| | |
|------|---------------|
| V1 | BASEMENT HVAC |
| M3.1 | 1/8" = 1'-0" |

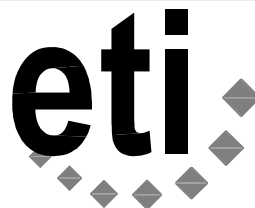


**INFUSION BREWERY
PARTIAL BASEMENT HVAC
PLAN**



SCALE: 1/8" = 1'-0"

ADDENDUM #2



Engineering Technologies Inc.

Mechanical & Electrical Building Solutions

4559 South 133rd Street | Omaha, NE 68137

P 402.330.2772 | F 402.330.2630

825 M Street, Suite 200 | Lincoln, NE 68508

P 402.476.1273 | F 402.476.1274

ETI Project No: (2012-126)

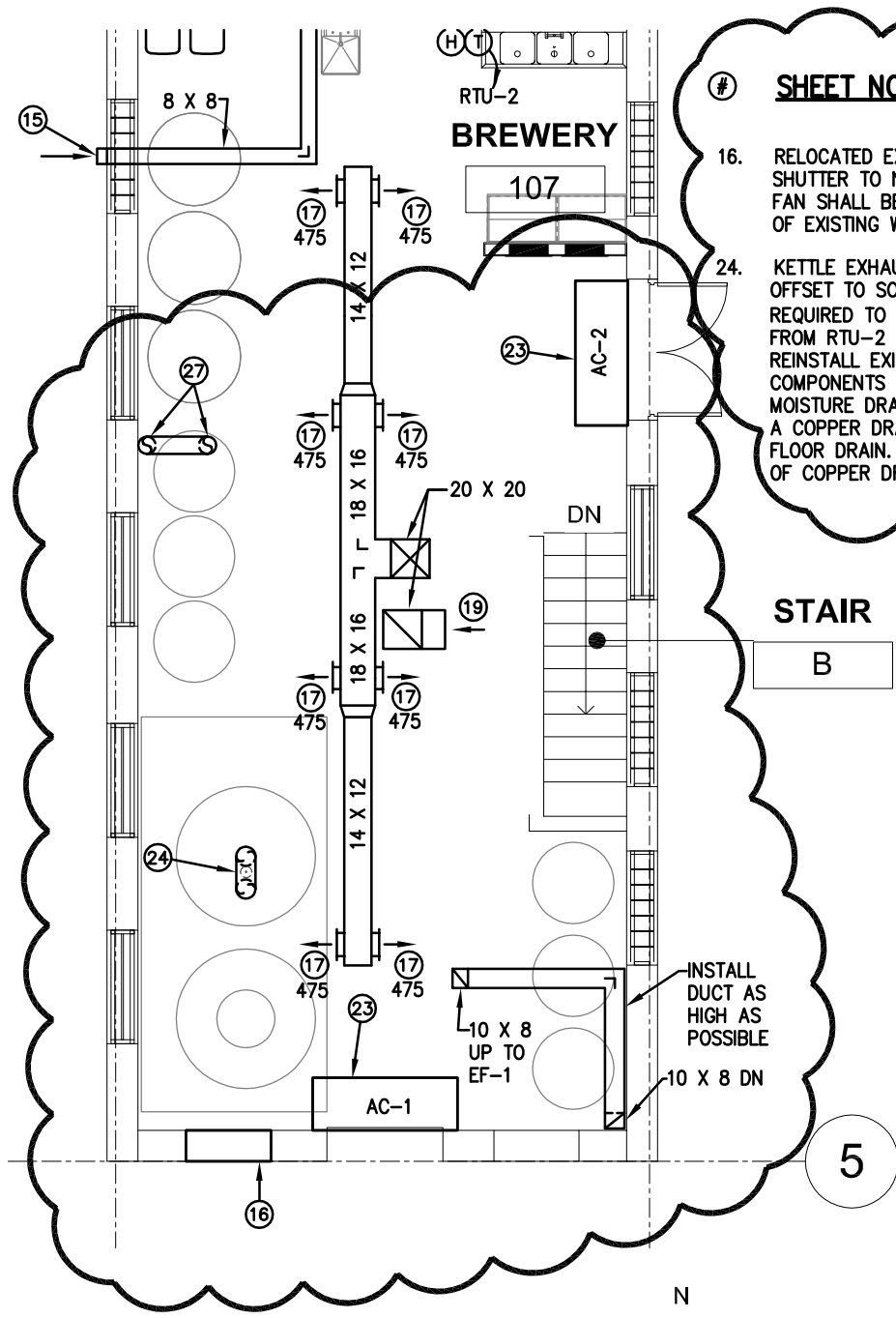
12/18/12

SHEET
M3.1

ATTACHMENT NO.

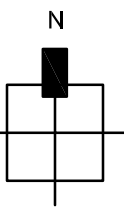
M3

RPJ

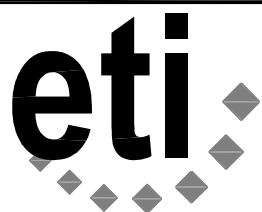


- # SHEET NOTES**
- RELOCATED EXISTING EXHAUST WALL FAN AND SHUTTER TO NEW LOCATION AS SHOWN. WALL FAN SHALL BE INSTALLED TIGHT TO THE BOTTOM OF EXISTING WINDOW OPENING.
 - KETTLE EXHAUST THROUGH ROOF, PROVIDE OFFSET TO SOUTH INSIDE BREWERY AS REQUIRED TO KEEP MINIMUM 10'-0" DISTANCE FROM RTU-2 OUTDOOR AIR INTAKE ON ROOF. REINSTALL EXISTING VENT PIPING AND ALL COMPONENTS AS SHOWN, SLOPE PIPE BACK TO MOISTURE DRAIN. MOISTURE DRAIN SHALL HAVE A COPPER DRAIN LINE ROUTED TO NEAREST FLOOR DRAIN. SEE SHEET M2.1 FOR ROUTING OF COPPER DRAIN LINE.

| | |
|-----------|-------------------|
| V9 | MAIN LEVEL - HVAC |
| M3.1 | 1/8" = 1'-0" |



INFUSION BREWERY
PARTIAL MAIN LEVEL
HVAC PLAN

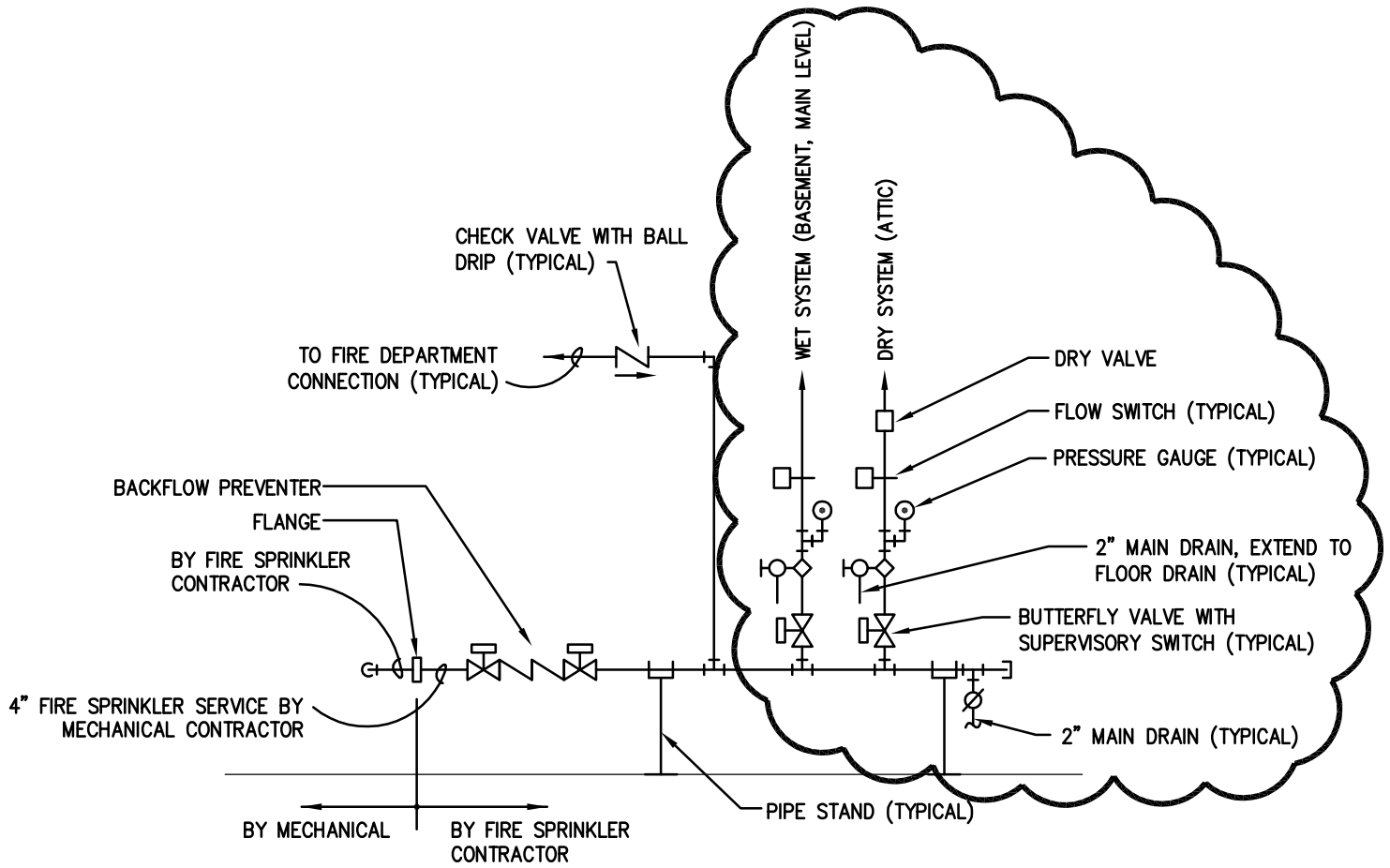


Engineering Technologies Inc.
 Mechanical & Electrical Building Solutions
 4559 South 133rd Street | Omaha, NE 68137
 P 402.330.2772 | F 402.330.2630
 825 M Street, Suite 200 | Lincoln, NE 68508
 P 402.476.1273 | F 402.476.1274
 ETI Project No: (2012-126)

| |
|-----------------------------|
| 12/18/12 |
| SHEET M3.1 |
| ATTACHMENT NO. M4 |
| RPJ |

SCALE: 1/8" = 1'-0"

ADDENDUM #2



| | |
|-------------|---------------------|
| L22 | FIRE SERVICE DETAIL |
| M4.1 | N.T.S. |

**INFUSION BREWERY
FIRE SERVICE DETAIL**



Engineering Technologies Inc.
 Mechanical & Electrical Building Solutions
 4559 South 133rd Street | Omaha, NE 68137
 P 402.330.2772 | F 402.330.2630
 825 M Street, Suite 200 | Lincoln, NE 68508
 P 402.476.1273 | F 402.476.1274
 ETI Project No: (2012-126)

| |
|-----------------------------|
| 12/18/12 |
| SHEET M4.1 |
| ATTACHMENT NO. M5 |
| RPJ |

EXHAUST FAN SCHEDULE

| MARK | SERVES | TYPE | AIR FLOW (CFM) | TOTAL S.P. (IN. W.C.) | FAN RPM | MAX. FAN BHP | ELECTRICAL DATA | | MANUFACTURER | MODEL |
|------|---------------|----------------|-------------------|--------------------------|------------|-----------------|-----------------|-------------|--------------|-----------|
| | | | | | | | HP | VOLTS/PHASE | | |
| EF-1 | GRINDING ROOM | ROOF - UPBLAST | 400 | .75 | 1725 | - | 1/4 | 120/1 | GREENHECK | CUE-099-A |
| EF-2 | RESTROOMS | ROOF | 325 | .125 | 860 | - | 1/6 | 120/1 | GREENHECK | G-098 |
| EF-3 | STOR. 106 | CEILING | 100 | .125 | 950 | - | FRAC. | 120/1 | GREENHECK | SP-B110 |

EXHAUST FAN SCHEDULE NOTES:

1. ALL EXHAUST FANS SHALL BE PROVIDED WITH VIBRATION ISOLATION, SPEED CONTROLLER (NEAR FAN IN ACCESSIBLE LOCATION FOR BALANCING CONTRACTOR, SEE ELECTRICAL DRAWINGS FOR LOCATIONS), PREWIRED DISCONNECT, AND BACKDRAFT DAMPER.
2. EF-2 SHALL BE CONTROLLED BY TIMECLOCK. COORDINATE WITH ELECTRICAL CONTRACTOR.
3. EF-3 SHALL BE CONTROLLED BY LINE VOLTAGE THERMOSTAT. COORDINATE WITH ELECTRICAL CONTRACTOR.
4. PROVIDE EF-3 WITH ROOF CAP MODEL GRS WITH INTEGRAL BIRDSCREEN AND ROOF CURB.
5. EF-1 SHALL BE EXPLOSION PROOF MOTOR AND CONSTRUCTION. PROVIDE GRAVITY DAMPER MODEL WD-100 AND BE CONTROLLED BY SWITCH.
6. PROVIDE ROOF CURB FOR EF-1 AND EF-2.

INFUSION BREWERY
EXHAUST FAN SCHEDULE

N.T.S.

ADDENDUM #2



Engineering Technologies Inc.
Mechanical & Electrical Building Solutions

4559 South 133rd Street | Omaha, NE 68137
P 402.330.2772 | F 402.330.2630

825 M Street, Suite 200 | Lincoln, NE 68508
P 402.476.1273 | F 402.476.1274

ETI Project No: (2012-126)

12/18/12

SHEET

M4.2

ATTACHMENT NO.

M6

RPJ