

Sampson Construction Co., Inc.
3730 South 14th Street
Lincoln, NE 68502
Phone: (402) 434-5450
FAX: (402) 434-5466

Bid Bulletin #02

PROJECT: Educare of Winnebago
Bid Package #04
Winnebago, NE

DATE: December 17, 2012

This Bid Bulletin includes items 2-1 through 2-4. Each item shall be fully incorporated into the Bidding/Contract Documents and have the same force and effect as though originally included. Bidders shall acknowledge receipt of this Bid Bulletin on the bid form.

Item 2-1 Attached is Addendum G dated 12/14/12 from RDG Planning & Design. Please note addendum A, B, C, D, E are not applicable to this bid package.

Item 2-2 Attached is revised summary of work #04-08 Glued-Laminated Construction.

Item 2-3 Attached is a preliminary schedule.

Item 2-4 Bids will also be received by email at educarewinnebago@yahoo.com.

END OF BID BULLETIN #02

December 14, 2012

ADDENDUM G

TO DRAWINGS AND SPECIFICATIONS FOR:

Educare Winnebago
Winnebago, Nebraska
RDG Project No. 2010.175.00, File 35.1

RDG Planning & Design
900 Farnam on the Mall, Suite 100
Omaha, NE 68102-5089
(402) 392-0133

NOTICE TO BIDDERS

This Addendum modifies the original Contract Documents and Project Manual dated November 16, 2012. Bidders must acknowledge receipt of the Addendum on the Bid Form.

The following separate packages have been/will be issued:

Water Utility Package	September 13, 2012
Foundations and Site Utilities Package	October 1, 2012
Structural Steel Package	October 26, 2012
Final Construction Documents	November 16, 2012

Corresponding addenda:

Addendum A	September 19, 2012	Water Utility Package
Addendum B (Post Bid)	September 27, 2012	Water Utility Package
Addendum C	October 4, 2012	Foundations and Site Utilities Package
Addendum D	October 15, 2012	Foundations and Site Utilities Package
Addendum E	November 6, 2012	Structural Steel Package
Addendum F	December 7, 2012	Final Construction Documents
Addendum G	December 14, 2012	Final Construction Documents

Unless otherwise indicated, the work described herein shall comply with, and be equal in all respect to, the original Contract Specifications and Drawings. Include all incidental work required to properly complete the work whether stated herein or not.

ADDENDA TO THE PROJECT MANUAL

Civil Specification Items

No Items this Addendum

Landscape Specification Items

GLS-1

Section 11 68 00 – Play Equipment:

A. Page 11 68 00-3, Paragraph 2.1, Subparagraph M, Item 2: Add Sub-Item a as follows:

a. Approved Manufacturer: Landscape Structures, 601 7 Street South, Delano, MN 55328, Phone – 888-4FUNLSI.

B. Page 11 68 00-4, Paragraph 2.1, Subparagraph N, Item 3, Sub-Item a: Change quantity number from “One (1)” to **“Three (3).”**

GLS-2

Section 32 14 13 – Unit Paving, Page 32 14 13-2, Paragraph 2.1, Subparagraph D:

A. Item 1: Replace “Unit Paver Types 1,2 and 3” with **“Unit Paver Types 1, 2, 3, and 4.”**

B. Line 3: Add the following to the end of the sentence:

Types 1, 2, and 3 are 3” x 16” and Type 4 is 4” x 8”.

Architectural Specification Items

No Items this Addendum

Structural Specification Items

No Items this Addendum

Mechanical Specification Items

GMS-1

Section 22 30 00 – Plumbing Equipment, Page 22 30 00-3, Paragraph 2.2: Add the following:

F. Laars.

G. Bradford White.

GMS-2

Section 22 40 00 – Plumbing Fixtures, Page 22 40 00-3, Paragraph 2.1, Paragraph C: Add the following:

10. Speakman Company.

GMS-3

Section 23 21 13 – Hydronic Piping, Page 23 21 13-8:

A. Paragraph 2.12, Paragraph A: Add the following:

6. Patterson.

B. Paragraph 2.13, Paragraph A: Add the following:

8. Pro Hydronic Specialties.

GMS-4

Section 23 21 14 – Hydronic Specialties

A. Page 23 21 14-2:

1. Paragraph 2.1, Paragraph A: Add the following:

6. Patterson.

2. Paragraph 2.3, Paragraph A, Subparagraph 1: Add the following:

e. Thrush.

B. Page 23 21 14-3, Paragraph 2.5, Paragraph A: Add the following:

5. Patterson.

GMS-5

Section 23 25 00 – HVAC Water Treatment, Page 23 25 00-2, Paragraph 2.1: Add the following:

M. General Treatment Products.

GMS-6

Section 23 31 00 – HVAC Ducts and Casings, Page 23 31 00-7, Paragraph 2.7, Paragraph A, Subparagraph 4: Add the following:

g. Metal-Fae.

GMS-7

Section 23 37 00 – Air Outlets and Inlets, Page 23 37 00-3, Paragraph 2.6, Paragraph B: Add the following:

12. Pottorff.

GMS-8

Section 23 81 46 – Water Source Heat Pumps, Page 23 81 46-7, Paragraph 2.5, Paragraph A: Add the following:

8. Pro Hydronic Specialties.

Electrical Specification Items

No Items this Addendum

Telecommunications Specification Items

GTS-1

Section 27 05 01 – Common Work Results for Communications:

A. Page 27 05 01–10, Paragraph 2.2, Paragraph B, Subparagraph 1: Add the following:

i. Hitachi.

GTS-2

Section 28 05 00 – Common Work Results for Electronic Safety and Security, Page 28 05 00–8, Paragraph 2.2:

A. Subparagraph B: Add the following subparagraphs:

6. IQinvision.

7. Arecont.

B. Subparagraph C: Delete paragraph in its entirety.

C. Subparagraph E: Delete paragraph in its entirety.

GTS-3

Section 28 16 00 – Intrusion Detection: Add new section. See attached Pages 28 16 00-1 through 28 16 00-6.

GTS-4

Section 28 23 00 – Electronic Video Surveillance System:

- A. Page 28 23 00–2, Paragraph 2.4: Delete paragraph and subsequent subparagraphs in their entirety.
- B. Page 28 23 00–3:
 - 1. Paragraph 2.5:
 - a. Subparagraph C: Delete subparagraph and all subsequent subparagraphs in their entirety.
 - b. Subparagraph F, Item 1: Revise “1” to read “2.”
 - c. Paragraph G: Delete paragraph and all subsequent subparagraphs in their entirety.in its entirety.
 - d. Paragraph H: Delete paragraph in its entirety.
 - 2. Paragraph 2.6, Subparagraph B: Delete subparagraph and all subsequent subparagraphs in their entirety.
- C. Page 28 23 00-4, Paragraph 2.6:
 - 1. Subparagraph E: Delete subparagraph and all subsequent subparagraphs in their entirety.
 - 2. Subparagraph F: Delete subparagraph and all subsequent subparagraphs in their entirety.
 - 3. Subparagraph G: Delete subparagraph and all subsequent subparagraphs in their entirety.
 - 4. Subparagraph I: Delete subparagraph and all subsequent subparagraphs in their entirety.
- D. Page 28 23 00–5:
 - 1. Paragraph 2.7: Delete paragraph and all subsequent subparagraphs in their entirety.
 - 2. Paragraph 2.8:
 - a. Subparagraph A. Delete Items 1 through 4 and replace with the following:
 - 3. ***Power for indoor camera(s) via PoE by Owner. Provide network switch.***
 - 4. ***Provide TVSS for power to outdoor camera(s).***
 - a. Subparagraph B: Delete subparagraph and all subsequent subparagraphs in their entirety.
 - b. Subparagraph C: Delete subparagraph in its entirety.
 - c. Subparagraph D: Delete subparagraph in its entirety.
 - 5. Paragraph 2.10, Subparagraph B:
 - a. Item 1: Delete “271627 (16) 16” from sentence.
 - b. Item 2: Delete item in its entirety.
 - 6. Paragraph 2.11, Paragraph B: Delete paragraph and subsequent subparagraph in their entirety.
 - 7. Paragraph 2.12: Delete paragraph and subsequent subparagraph in their entirety.

ADDENDA TO THE DRAWINGS

Civil Drawing Items

No Items this Addendum

Landscape Drawing Items

- GLD-1 Sheet SP3.4:
- A. Revise call out to read ***"PLAY VILLAGE"*** instead of "GAS STATION." See attached Supplemental Drawing SDSP-01.
 - B. Revise call outs, remove whale drum, add Amadinda, and revise storage shed layout. See attached Supplemental Drawing SDSP-02.
- GLD-2 Sheet SP3.1: Update Legend as shown in attached Supplemental Drawing SDSP-03.
- GLD-3 Sheet 3.2: Update Legend as shown in attached Supplemental Drawing SDSP-03.
- GLD-4 Sheet 3.3: Update Legend as shown in attached Supplemental Drawing SDSP-03.
- GLD-5 Sheet 3.4: Update Legend as shown in attached Supplemental Drawing SDSP-03.
- GLD-6 Sheet 3.5: Update Legend as shown in attached Supplemental Drawing SDSP-03.
- GLD-7 Sheet SP5.2. Remove decomposed granite, add PCC sidewalk, and revise note as shown in attached Supplemental Drawing SDSP-04.
- GLD-8 Sheet SP5.3. Remove drain tile from southwest Bioretention Cell. See attached Supplemental Drawing SDSP-05.

Architectural Drawing Items

- GGD-1 Sheet A01.03, Floor Plan North, Room 3-5 (154): Revise Window W11 to read ***"W11B."***
- GGD-2 Sheet A01.04, Floor Plan South, Room Assess (132): Revise Window W13B to read ***"W13."***
- GGD-3 Sheet A03.01, Reflected Ceiling Plan North:
- A. Ceiling General Notes, Note 2: Revise reference to Sheet G1.01 in the note description to read Sheet ***"A00.00."***
 - B. Plan 12, Reflected Ceiling Plan: Add Detail Reference ***"24 / A14.01"*** per attached Supplemental Drawing SDA-008 to clarify framing interface of light fixture beam and wall.
- GGD-4 Sheet A03.02, Reflected Ceiling Plan South, Ceiling General Notes, Note 2: Revise reference to Sheet G1.01 in the note description to read Sheet ***"A00.00."***
- GGD-5 Sheet A5.01, Exterior Elevations: See attached Supplemental Drawing SDA-007 with the following revisions:
- A. Add location of drain tile.
 - B. Add Notes 1, 2, and 3 as follows:
 - 1. CONTINUE TO DAYLIGHT.***
 - 2. DRAIN TILE TO DAYLIGHT. PROVIDE GRANULAR FILL AND FILTER FABRIC.***
 - 3. CONTINUE DRAIN TILE ALONG SITE WALL.***

GGD-6

Sheet A05.02, Exterior Elevations:

- A. Elevation 1, East: See attached Supplemental Drawing SDA-009 with the following revisions:
1. Revise one instance of W9 reference (to right of Grid 18) to read **"W7."**
 2. Revise all occurrences of "FACIA" in notes to read **"FASCIA."**
 3. Add locations for through-wall scuppers and add the note **"OVERFLOW SCUPPER (TYPICAL) – SEE MECHANICAL."**
- B. Elevation 2, East: See attached Supplemental Drawing SDA-010 with the following revisions:
1. Revise one instance of W30 referenct (to left of Grid 7) to read **"W28."**
 2. Add horizontal line to define panel joint between precast panels.
- C. Elevation 8, Northwest: See attached Supplemental Drawing SDA-010. Panel revision includes addition of horizontal line to define panel joint between precast panels.
- D. Elevation 9, Northwest 2: Revise one window reading W11 to read **"W11B."**
- E. Elevation 10, Southwest (Lodge): Revise one illegible note to read:
6" DEEP FRONT LOAD ALUMINUM CURTAINWALL SYSTEM W/ INSULATED GLASS PANELS.
- F. Elevation 11, Southeast: Revise note reading "OVERFLOW SCUPPERS" to read **"OVERFLOW SCUPPER, TYP. SEE DETAIL 5 / A07.03."**
- G. Exterior Material Legend, Wood Siding: Revise line reading "WD-1: WOOD SOFFIT SIDING: DESIGNED TO CAMBIA SHIPLAP RED OAK" to read **"WD-1: HARDBOARD SIDING, SEE SECTION 062013."**

GGD-7

Sheet A05.02, Exterior Elevations:

- A. Elevation 1, West: See attached Supplemental Drawing SDA-011 with the following revisions:
1. Add note reading **"OVERFLOW SCUPPER, TYP. SEE DETAIL 5 / A07.03."**
 2. Revise window tag locations for clarity.
- B. Exterior Material Legend, Wood Siding: Revise line reading "WD-1: Wood SOFFIT SIDING: DESIGNED TO CAMBIA SHIPLAP RED OAK" to read **"WD-1: HARDBOARD SIDING, SEE SECTION 062013."**

GGD-8

Sheet A06.03, Building Sections, Section 3, Library: Add note above Window F21 to read:

PROVIDE BOX HEADER BY METAL STUD SUPPLIER TO SPAN WINDOW OPENING.

GGD-9

Sheet A07.04, Wall Sections:

- A. Section 1, East Wing: Add header above window opening with note to read:
METAL STUD BOX HEADER BY METAL STUD FABRICATOR AT LONG SPAN WINDOW OPENINGS.
- B. Section 2, North Wing: Add header above window opening with note to read:
METAL STUD BOX HEADER BY METAL STUD FABRICATOR AT LONG SPAN WINDOW OPENINGS.

- C. Section 3, Library Wall: Revise note reading "BOX HEADER BY METAL STUD FABRICATOR" to read:

METAL STUD BOX HEADER BY METAL STUD FABRICATOR AT LONG SPAN WINDOW OPENINGS.

GGD-10 Sheet A10.01, Door Schedule & Types, F20: Revise per attached Supplemental Drawing SDA-012.

GGD-11 Sheet A10.03, Window Types:

- A. W11A: Revise per attached Supplemental Drawing SDA-012.
- B. W11B: Add Glass Type "7" to two panes.
- C. W12: Revise per attached Supplemental Drawing SDA-013.
- D. W15: Revise per attached Supplemental Drawings SDA-012.
- E. W20: Revise per attached Supplemental Drawing SDA-012.

Structural Drawing Items

GSD-1 Sheet S1.02:

- A. Column at Grid J/23.5 shall be noted as "***HSS5X5X3/8.***" See enclosed Structural Sketch SDS.018.
- B. Column shown near Grid J, 15.8 shall be located on grid. See enclosed Structural Sketch SDS.018.

GSD-2 Sheet S2.01: See enclosed Structural Sketch SDS.020.

- A. Revise framing sizes at Grids 10, 11 as shown.
- B. Move W21x44 off Grid 10 by 1".

GSD-3 Sheet S2.02: W16x26 beam at Grid J shall span between 23.5-24. See enclosed Structural Sketch SDS.019.

GSD-4 Sheet S6.00: Revise Note J.7 to read "***...Fasteners shall be A307 bolts unless noted otherwise.***"

GSD-5 Sheet S6.05, Detail 9: Change angle size to "***L4x3x1/4xcont.***" See enclosed Structural Sketch SDS.021.

GSD-6 Sheet S6.06, Detail 10: See enclosed Structural Sketch SDS.021.

- A. Change angle size to "***L4x3x1/4xcont.***"
- B. Change bracket size to "***L8x6x7/16xcont.***"

Mechanical Drawing Items

GMD-1 Sheet P01.01 – Below Grade Plumbing Plan – North: Revise sheet as indicated on attached Mechanical Sketch MS-3.

GMD-2 Sheet P02.01 – Domestic Water Piping Plan – North: Revise sheet as indicated on attached Mechanical Sketch MS-4.

Electrical Drawing Items

GED-1 Sheet E00.01 – Electrical Site Plan, Site Lighting Schedule: Lighting fixtures, equivalent to those specified, and manufactured by the following are acceptable for the fixture types listed:

- A. Type A: Kim Lighting, Invue.
- B. Type B: Invue
- C. Type C: FC Lighting.

GED-2 Sheet E01.01 – Floor Plan North – Lighting: Revise Flag Note 5 to read as follows:

- 5. PROVIDE ANIGMO ST2-1800R TOUCHLESS WALL SWITCH WITH ANIGMO TERRA SWITCH PLATE. COORDINATE FINAL LOCATION WITH ARCHITECTURAL DETAILS.**

GED-3 Sheet E01.02 – Floor Plan South – Lighting: Revise Flag Note 4 to read as follows:

- 4. PROVIDE ANIGMO ST2-1800R TOUCHLESS WALL SWITCH WITH ANIGMO TERRA SWITCH PLATE. COORDINATE FINAL LOCATION WITH ARCHITECTURAL DETAILS.**

GED-4 Sheet E02.01 – Floor Plan North – Power:

- A. Lounge 103: Relocate dishwasher receptacle and add Flag Note 15 per attached Electrical Sketch ES-4.
- B. Revise Flag Note 13 to read as follows:

- 13. PROVIDE PLUG AND CORD CONNECTION FOR UNDERCOUNTER OVEN. COORDINATE RECEPTACLE CONFIGURATION WITH EQUIPMENT MANUFACTURER. VERIFY ACCESSIBLE RECEPTACLE LOCATION WITH CASEWORK DETAILS.**

GED-5 Sheet E03.01 – Floor Plan North – Special Systems:

- A. Conference Room 141: Revise location of Flag Note 9 to assign note to flat panel display at center of west wall (in lieu of being shown over top of flat panel symbol).
- B. RECP 101C: Install a panic button at edge of reception desk. See Detail 9/T02.03.

GED-6 Sheet E05.00 – Electrical Schedules:

- A. Lighting Fixture Schedule:
 - 1. Revise Fixture Type 20 specification as follows:
 - a. Manufacturer: **Bartco.**
 - b. Catalog Number: **BFL281-28 281-R1-28/54.**
 - c. Lamping: **1-F28T5.**
 - d. Volts: **120.**
 - e. Mounting: **Note 5.**
 - f. Description: **Low Profile Striplight.**
 - 2. Delete Schedule Note 6.

B. Occupancy Sensor Schedule: Add General Notes 8, 9, and 10 to read as follows:

8. **OCCUPANCY SENSORS, EQUIVALENT TO THOSE SPECIFIED, FROM THE FOLLOWING MANUFACTURERS ARE ACCEPTABLE: 1) COOPER CONTROLS – GREENGATE; 2) ACUITY BRANDS, INC. – SENSOR SWITCH; 3) LEVITON MANUFACTURING CO., INC; 4) HUBBEL BUILDING AUTOMATION; AND 5) LUTRON ELECTRONICS, INC. PROVIDE ADDITIONAL DEVICES, POWER PACKS, AUXILIARY EQUIPMENT, WIRING, ETC. AS REQUIRED FOR A COMPLETE AND OPERABLE SYSTEM MEETING CONTROL INTENT AND COVERAGE DEPICTED ON DRAWINGS.**
9. **SUBMIT THE FOLLOWING SHOP DRAWINGS FOR REVIEW PRIOR TO ORDERING DEVICES: 1) PRODUCT DATA: INCLUDE MANUFACTURER'S STANDARD CATALOG PAGE OR DATA SHEET DENOTING RATINGS, CONFIGURATIONS, STANDARD WIRING DIAGRAMS, DIMENSIONS, COLORS, SERVICE REQUIREMENTS, AND INSTALLED FEATURES; 2) PLANS: INDICATE LOCATION, MODEL NUMBER, AND ORIENTATION OF EACH SENSOR AND ASSOCIATED SYSTEM COMPONENT; AND 3) RISER DIAGRAM: INDICATE DEVICE INTERCONNECTION AND CABLE/CONDUCTOR TYPES.**
10. **PROVIDE THE FOLLOWING MATERIALS WITHIN THE OPERATION AND MAINTENANCE MANUAL: 1) MANUFACTURER'S STANDARD CATALOG PAGE, DATA SHEET, OR BOTH FOR EACH LIGHTING CONTROL DEVICE; 2) MANUFACTURER'S STANDARD INSTALLATION INSTRUCTIONS, INCLUDING DETAILED INFORMATION ON DEVICE PROGRAMMING AND SETUP; AND 3) PLANS: RECORD ACTUAL INSTALLED LOCATIONS OF EACH SYSTEM COMPONENT.**

C. Relay Cabinet Schedule: Revise Note 1 to read as follows:

1. **A LIGHTING CONTROL PANEL WITH PHOTOCCELL INPUT, INTEGRAL ASTRONOMIC TIME CLOCK, AND RELAYS AS SCHEDULED, FROM THE FOLLOWING MANUFACTURERS ARE ACCEPTABLE: 1) WATTSTOPPER: LP8; 2) COOPER CONTROLS – GREENGATE: LIGHTKEEPER LK8; 3) ACUITY BRANDS, INC. – LIGHTING CONTROL & DESIGN: GR1400 CONTROL PANEL; 4) HUBBEL BUILDING AUTOMATION: CX, AND 5) LEVITON MANUFACTURING CO., INC.: EZ-MAX.**

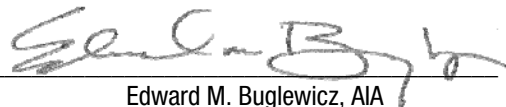
D. Lighting Fixture Schedule: Lighting fixtures, equivalent to those specified, and manufactured by the following are acceptable for the fixture types listed:

1. Types 1/1E, 8/8E/8L, 13/13E, 25/25E: **AXIS LIGHTING, LITECONTROL.**
2. Types 2/2A/2AE/2E, 7/7E: **COLUMBIA LIGHTING, METALUX.**
3. Types 3/3E, 4: **ATLANTIC LIGHTING, PRESCOLITE.**
4. Types 5/5E, 19E: **AXIS LIGHTING.**
5. Type 6/6E: **COLUMBIA LIGHTING, METALUX.**
6. Type 9: **LITECONTROL, CORELITE.**
7. Type 10/10E: **BIRCHWOOD LIGHTING.**
8. Type 11: **BIRCHWOOD LIGHTING.**
9. Type 12: **AXIS LIGHTING.**

10. Types 14, 26: **DUALITE, SURE-LITES.**
11. Type 15: **BIRCHWOOD LIGHTING.**
12. Type 16: **RSA.**
13. Type 17: **FC Lighting.**
14. Type 18/18E: **COLUMBIA LIGHTING, METALUX.**
15. Type 19/19E: **AXIS LIGHTING.**
16. Type 21: **FC Lighting.**
17. Type 22: **AXIS LIGHTING.**
18. Type 23: **HALO.**

ALL OTHER REQUIREMENTS OF THE PLANS AND SPECIFICATIONS REMAIN IN EFFECT. THIS ADDENDUM SHALL BE ATTACHED AND MADE A PART OF THE PLANS AND SPECIFICATIONS.

RDG PLANNING & DESIGN

By 
Edward M. Buglewicz, AIA
for RDG Schutte Wilscam Birge, Inc.

END OF ADDENDUM G

EMB/jm

Enclosure:

Specification Section 28 16 00 – Intrusion Detection
Supplemental Drawings SDSP-01 through SDSP-05
Supplemental Drawing SDA-07 through SDA-013
Structural Sketch SDSP-018 through SDSP-021
Mechanical Sketches MS-3 and MS-4
Electrical Sketch ES-4

SECTION 28 16 00 - INTRUSION DETECTION

PART 1 GENERAL

1.1 SECTION INCLUDES

- A. Intrusion detection system requirements.
- B. Alarm control unit.
- C. Keypads.
- D. Initiating devices.
- E. Alarm notification appliances.
- F. Accessories.
- G. Intrusion detection devices.
- H. Alarm control panel.

1.2 RELATED REQUIREMENTS

- A. Section 08 71 00 - Door Hardware.
- B. Section 26 05 34 - Conduit.

1.3 SYSTEM DESCRIPTION

- A. Intrusion Detection System: Protect building and selected areas from intrusion during SECURE hours as follows:
 - 1. Exterior Doors: As indicated on drawings..
 - 2. Motion Detection: As indicated on drawings.

1.4 SUBMITTALS

- A. Product Data: Provide manufacturer's standard catalog pages and data sheets for each system component. Include ratings, configurations, standard wiring diagrams, dimensions, finishes, service condition requirements, and installed features.
- B. Shop Drawings: Include plan views indicating locations of system components and proposed size, type, and routing of conduits and/or cables. Include system interconnection schematic diagrams. Include requirements for interface with other systems.
- C. Operation and Maintenance Data: Include detailed information on system operation, equipment programming and setup, replacement parts, and recommended maintenance procedures and intervals.
- D. Warranty: Submit sample of manufacturer's warranty and documentation of final executed warranty completed in Owner's name and registered with manufacturer.

1.5 QUALITY ASSURANCE

- A. Conform to requirements of NFPA 70.
- B. Manufacturer Qualifications: Company specializing in manufacturing the products specified in this section with minimum three years documented experience.
- C. Installer Qualifications: Company specializing in performing the work of this section with minimum three years documented experience with intrusion detection systems of similar size, type, and complexity and

providing contract maintenance service as a regular part of their business; authorized representative of control unit manufacturer.

- D. Manufacturer Qualifications: Company specializing in manufacturing the products specified in this section with minimum three years documented experience and with service facilities within 100 miles of Project.
- E. Products: Furnish products listed and classified by Underwriters Laboratories Inc. as suitable for purpose specified and indicated.

1.6 DELIVERY, STORAGE, AND HANDLING

- A. Receive, inspect, handle, and store products in accordance with manufacturer's instructions.
- B. Store products in manufacturer's unopened packaging, keep dry and protect from damage until ready for installation.

1.7 WARRANTY

- A. Provide minimum two year manufacturer warranty covering repair or replacement due to defective materials or workmanship.

PART 2 PRODUCTS

2.1 INTRUSION DETECTION SYSTEM REQUIREMENTS

- A. Provide new intrusion detection system consisting of all required equipment, conduit, boxes, wiring, connectors, hardware, supports, accessories, software, system programming, etc. as necessary for a complete operating system that provides the functional intent indicated
- B. Alarm Control Unit: New addressable alarm control panel located as shown on drawings.
- C. Combination fire/intrusion systems are not permitted.
- D. Keypads: Located as shown on drawings.
- E. Initiating Device Requirements:
 - 1. Protected Premises: Entire building shown on drawings.
 - 2. Provide motion detectors to detect intruder in designated areas.
- F. Alarm Notification and Reporting Requirements:
 - 1. Activate alarm notification at alarm control unit and associated keypads/annunciators with appropriate zone information displayed.
 - 2. Transmit alarm report to listed remote central station under contract with facility.
 - a. Primary Communication Means: Telephone line (digital alarm communicator).
 - b. Secondary Communication Means: Internet/intranet (IP addressing).
- G. Interface with Other Systems:
 - 1. Provide products compatible with other systems requiring interface with intrusion detection system.
 - 2. Interface with access control system as specified in Section 28 13 00.
 - a. Capable of affecting access for designated doors for selected intrusion detection system events.
 - b. Capable of affecting intrusion detection system status for selected access control system events.
 - 3. Interface with video surveillance system as specified in Section 28 23 00.
 - a. Capable of activating video surveillance system and controlling camera inputs/video outputs for selected intrusion detection system events.
 - 4. Interface with electrically operated door hardware as specified in Section 08 71 00.

- a. Capable of locking/unlocking/releasing designated doors for selected intrusion detection system events.
- H. Provide products listed, classified, and labeled by Underwriter's Laboratories Inc. (UL), Intertek (ETL), or testing firm acceptable to authority having jurisdiction as suitable for the purpose indicated.
 - 1. Central Station Alarm Units: Listed and labeled as complying with UL 1610.
- I. Electromagnetic Interference/Radio Frequency Interference (EMI/RFI) Limits: Comply with FCC requirements of CFR, Title 47, Part 15, for Class B, consumer application.

2.2 MANUFACTURERS

- A. Intrusion Detection System:
 - 1. Refer to section 28 05 00 for list of acceptable manufacturers.

2.3 ALARM CONTROL PANEL

- A. Manufacturers:
 - 1. Addressable Alarm Control Panel - Basis of Design: Honeywell Security Group; Vista 128 BPT; www.security.honeywell.com.
 - a. Supports up to 128 zones (nine style-B hardwired; up to 119 addressable/polling loop).
 - b. Supports independent control of up to 8 separate partitions.
 - c. Supports up to 96 programmable relay outputs.
 - d. Supports up to 150 user codes with seven authority levels.
 - e. Event log stores up to 512 events.
 - f. Supports wireless devices using up to two 5800 Series wireless receivers.
 - g. Provides integrated security, access control, and CCTV switching capability.
 - h. Supports panel linking.
 - i. Supports alarm reporting via internet/intranet and digital cellular communicators.
 - j. Interfaces with automation software.
 - 2. Addressable Alarm Control Panel - Other Acceptable Manufacturers:
 - a. Bosch Security Systems: www.boschsecurity.us.
 - b. Digital Security Controls (DSC); a brand of Tyco International: www.dsc.com.
 - c. Honeywell Security Group; Vista 128BPT: www.security.honeywell.com.
- B. Alarm Control Panel: Modular construction.
 - 1. Enclosure: Lockable; provide tamper protection.
 - 2. Power Supply:
 - a. Primary Power: 120 VAC; provide suitable transformer/power supply; supervised for loss of AC power.
 - b. Secondary Power: Standby battery; provide suitable capacity for minimum standby time required by listing requirements, applicable codes, and authority having jurisdiction, but not less than four hours; provide suitable battery charger; supervised for low battery condition; protected from accidental reversal of battery leads.
- C. Communications Interfaces: Supervised.
 - 1. Supports system reporting to central station receivers via integral interface or accessory interface modules using:
 - a. Telephone lines.
 - b. Internet/intranet (IP addressing).
 - 2. Supported Reporting Format(s): Compatible with central station.
- D. Output Relays:
 - 1. Relay Modules: Form C relays (normally open and normally closed); provide tamper protection.

2. Programmable to respond to system events, according to defined scheduling, or by manual activation from keypad.
- E. Scheduling:
1. Provide time/calendar-based scheduling capability for automated system control.
 2. Supports open/close schedules for control of arming/disarming and reporting.
 3. Supports automatic adjustment for daylight savings time.
 4. Supports holiday schedules.
- F. Event Log:
1. Stores system events including time, date, partition, zone, and user code where applicable.
 2. Supports viewing of event log on keypads.
 3. Supports viewing of event log on remote PC.
 4. Supports printing of event logs on local printer.
- G. Features:
1. Capable of being programmed locally or remotely.
 2. Capable of being armed via key switch.
 3. Supports user interface via:
 - a. Telephone.
 - b. Web browser.
 - c. Mobile device.
- H. Control Panel: Modular construction with surface wall-mounted enclosure.
- I. Power supply: Adequate to serve control panel modules, remote detectors, and alarm signaling devices. Include battery-operated emergency power supply with capacity for operating system in standby mode for 24 hours.
- J. System Supervision: Provide electrically-supervised system, with supervised alarm initiating and alarm signaling circuits. Component or power supply failure places system in alarm mode.
- K. Initiating Circuits: Supervised zone module with alarm and trouble indication.
- L. Signal Circuits: Supervised zone coded signal module, sufficient for signal devices connected to system; occurrence of single ground or open condition places circuit in trouble mode and does not disable that circuit from transmitting alarm.
- M. Remote Station Signal Transmitter: Electrically supervised, capable of transmitting alarm and trouble signals over telephone lines to central station receiver.
- N. Auxiliary Relays: Provide sufficient SPDT auxiliary relay contacts for each detection zone to provide accessory functions specified.

2.4 KEYPADS

- A. Manufacturer: Same as manufacturer of alarm control unit.
- B. Provides audible notification to indicate system status, entry/exit delay, and alarm situations; provide separate distinguishable sounds for alarm and trouble conditions.
- C. Keypad Type: Only LCD or graphic touch screen keypads are acceptable. Do not use LED keypads.
- D. Graphic Touch Screen Keypads: Displays system status and zone information using plain English on graphic display; touch screen interface.
- E. LCD Keypads: Displays system status and zone information using plain English on alphanumeric display; illuminated keys.

2.5 INITIATING DEVICES

- A. Manufacturers: Same as manufacturer of alarm control units where possible.
- B. Contacts:
 - 1. Listed and labeled as complying with UL 634.
 - 2. Magnetic Contacts: Encapsulated reed switch(es) and separate magnet; designed to monitor opened/closed position of doors or windows.
 - a. Use standard security contacts (not balanced magnetic type) unless otherwise indicated.
 - 3. Contact Color: To be selected by Architect from manufacturer's available standard colors.
 - 4. Basis of Design Products:
 - a. SDC- part number MC-4 or approved equal..
- C. Motion Detectors:
 - 1. Listed and labeled as complying with UL 639.
 - 2. Dual Technology PIR/Microwave Motion Detectors: Designed to detect intruder using combination of passive infrared technology (by sensing movement of thermal energy between zones) and microwave technology (by sensing frequency shifts in emitted and reflected high frequency microwave signals).
 - 3. Basis of Design Products:
 - a. GE Security RCR-90..
- D. Panic Button:
 - 1. Install at edge of reception desk at Room 101C. Refer to detail on plans for additional information.

2.6 ACCESSORIES

- A. Provide components as indicated or as required for connection of alarm control unit to devices and other systems indicated.
- B. Provide cables as indicated or as required for connections between system components.
- C. Provide end-of-line resistors (EOLR) as required for supervision of hardwired zones.

PART 3 EXECUTION

3.1 EXAMINATION

- A. Verify that field measurements are as shown on the drawings.
- B. Verify that mounting surfaces are ready to receive system components.
- C. Verify that branch circuit wiring installation is completed, tested, and ready for connection to system.
- D. Verify that conditions are satisfactory for installation prior to starting work.

3.2 INSTALLATION

- A. Perform work in a neat and workmanlike manner in accordance with NECA 1.
- B. Install products in accordance with manufacturer's instructions.
- C. Wiring Method: Unless otherwise indicated, use wiring in conduit.
 - 1. Use listed plenum rated cables in spaces used for environmental air.
 - 2. Install wiring in conduit where required for rough-in, where required by authority having jurisdiction, and where exposed to damage.
 - 3. Conceal all cables unless specifically indicated to be exposed.
- D. Provide grounding and bonding in accordance with Section 26 05 26.

- E. Install firestopping to preserve fire resistance rating of partitions and other elements, using materials and methods specified in Section 07 84 00.
- F. Install in accordance with manufacturer's instructions.
- G. Use 18 AWG minimum size conductors for detection and signal circuit conductors. Install wiring in conduit.

3.3 FIELD QUALITY CONTROL

- A. Prepare and start system in accordance with manufacturer's instructions.
- B. Inspection and testing to include, at a minimum:
 - 1. Test each initiating device for proper response by alarm control unit.
- C. Correct defective work, adjust for proper operation, and retest until entire system complies with contract documents.
- D. Submit detailed reports indicating inspection and testing results and corrective actions taken.

3.4 ADJUSTING

- A. Program system parameters according to requirements of Owner.

3.5 CLEANING

- A. Clean exposed surfaces to remove dirt, paint, or other foreign material and restore to match original factory finish.

3.6 MANUFACTURER SERVICES

- A. Provide the services of the manufacturer's technical representative to prepare and start systems.
 - 1. Include services of technician to supervise installation, adjustments, final connections, system testing, and Owner training.

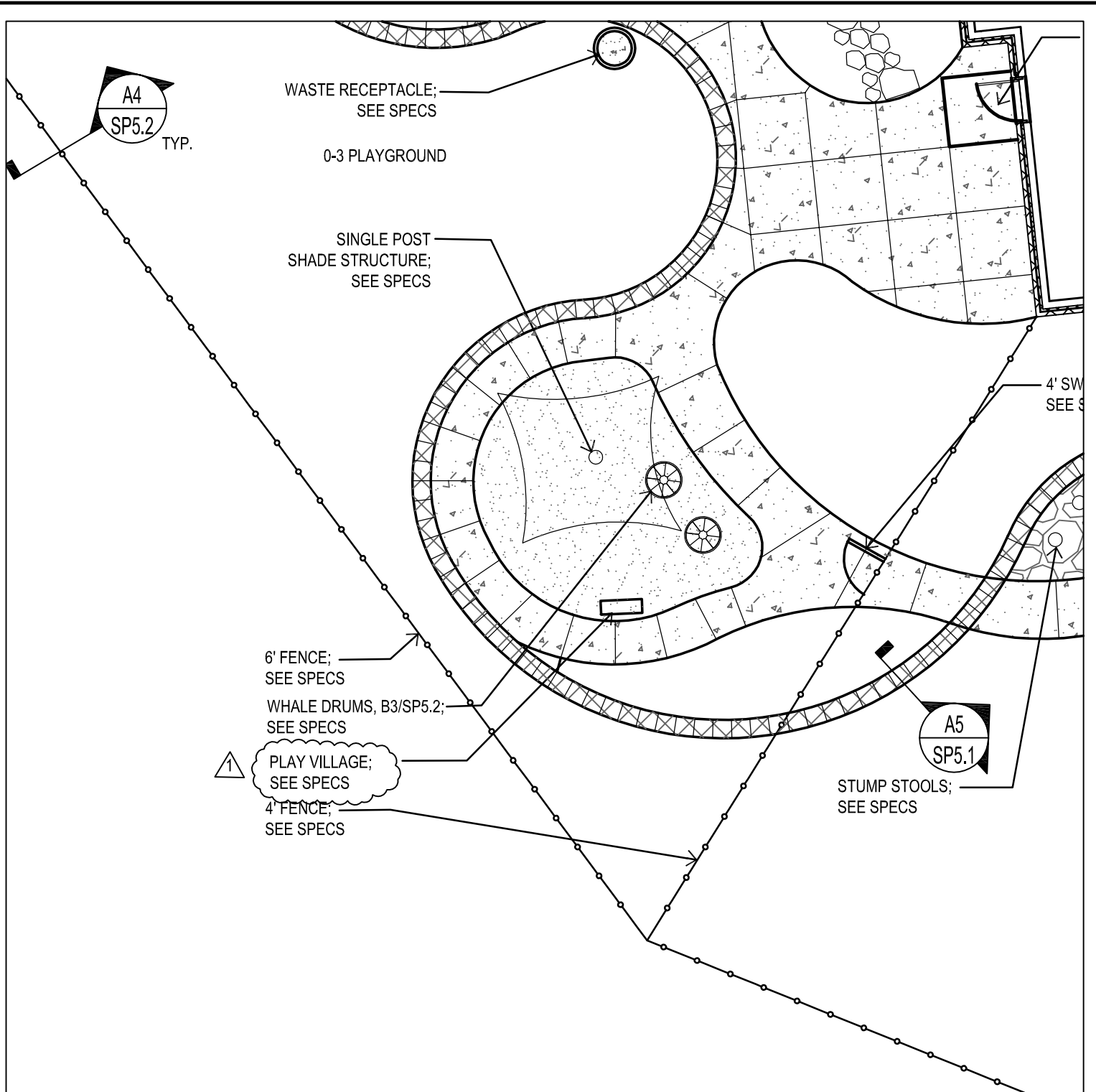
3.7 CLOSEOUT ACTIVITIES

- A. Training: Train Owner's personnel on operation, adjustment, and maintenance of system.
 - 1. Use operation and maintenance manual as training reference, supplemented with additional training materials as required.
 - 2. Provide minimum of four hours of training.
 - 3. Instructor: Manufacturer's authorized representative.
 - 4. Location: At project site.
- B. Demonstrate normal and abnormal modes of operation, and required responses to each.

3.8 MAINTENANCE

- A. Provide service and maintenance of intrusion detection system for one year from Date of Substantial Completion.

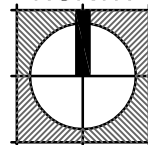
END OF SECTION



SCALE: 1" = 10'



NORTH



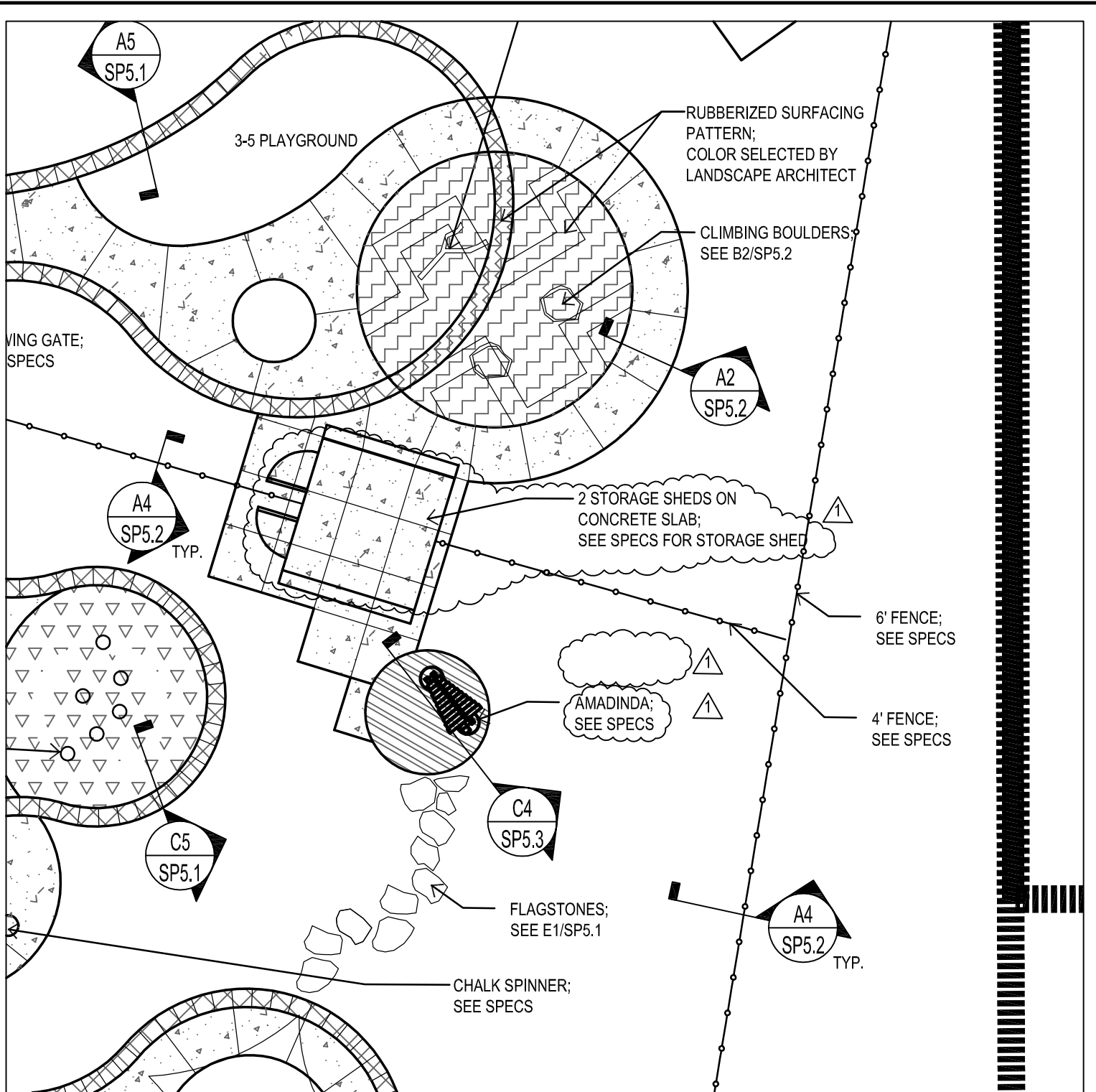
EDUCARE WINNEBAGO

WINNEBAGO, NEBRASKA

DATE 12/14/12
 MODIFICATION: ADDENDUM G
 REF'D SHEET: SP 3.4
 REF'D DETAIL: A1

2010.175
 45.2

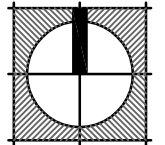
SDSP-01



SCALE: 1" = 10'



NORTH



EDUCARE WINNEBAGO







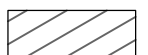





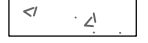
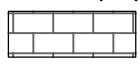
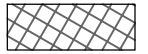
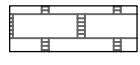

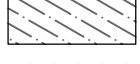

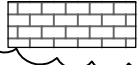
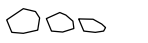

WINNEBAGO, NEBRASKA

DATE 12/14/12
 MODIFICATION: ADDENDUM G
 REF'D SHEET: SP 3.4
 REF'D DETAIL: A1

2010.175
 45.2

SDSP-02

LEGEND:

	CONSTRUCTION LIMIT LINE		5" COLORED PCC SIDEWALK TYPE 4; SEE A5/SP5.1
	PROPERTY LINE		POURED IN PLACE RUBBERIZED SURFACING; SEE A2/SP5.2
	FENCING; SEE SPECS		FLAGSTONE PAVING; SEE E2/SP5.1
	7" PCC PAVEMENT; SEE D2/SP5.1		FIBAR MULCHING; SEE SPECS
	7" PCC PAVEMENT TYPE 4; SEE D2/SP5.1		DECOMPOSED GRANITE; SEE B1/SP5.2
	6" PCC PAVEMENT; SEE D1/SP5.1		COMPOSITE DECKING C4/SP5.3
	5" PCC SIDEWALK TYPE 1; SEE A5/SP5.1		BASE BID - CONCRETE PAVER TYPE 1; SEE C1/SP5.1 DEDUCT ALT. #1 - PCC COLOR CONCRETE TYPE 2; SEE A5/SP5.1
	5" COLORED PCC SIDEWALK TYPE 2; SEE A5/SP5.1		BASE BID - CONCRETE PAVER TYPE 2; SEE C1/SP5.1 DEDUCT ALT. #1 - PCC COLOR CONCRETE TYPE 3; SEE A5/SP5.1
	5" COLORED PCC SIDEWALK TYPE 3; SEE A5/SP5.1		BASE BID - CONCRETE PAVER TYPE 3; SEE C1/SP5.1 DEDUCT ALT. #1 - PCC COLOR CONCRETE TYPE 4; SEE A5/SP5.1
	LIGHTING; SEE ELECTRICAL		BASE BID - CONCRETE PAVER TYPE 4; SEE E4/SP5.1 DEDUCT ALT. #1 - PCC COLOR CONCRETE TYPE 4; SEE A5/SP5.1
	FLAGSTONE PAVER; SEE E1/SP5.1		SYNTHETIC TURF; SEE C5/SP5.1

1



EDUCARE WINNEBAGO

DATE 12/14/12

MODIFICATION: ADDENDUM G

REF'D SHEET: SP 3.1,3.2.3.3,
3.4.3.5

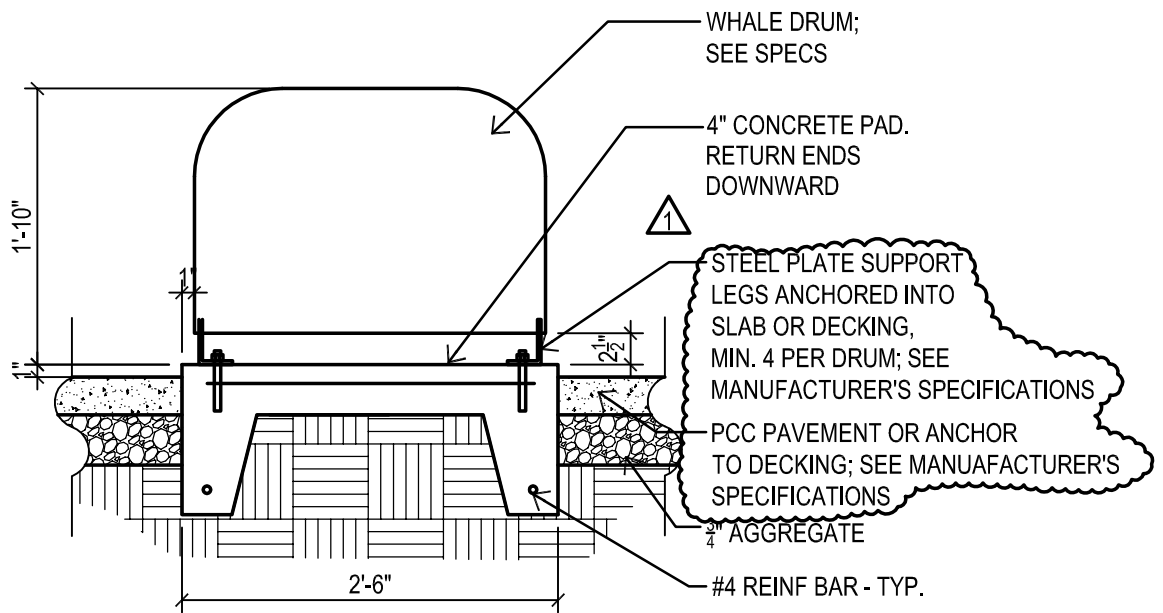
REF'D DETAIL: A1

WINNEBAGO, NEBRASKA

2010.175

45.2

SDSP-03



B3 WHALE DRUM
N.T.S.
-0625



EDUCARE WINNEBAGO

DATE 12-14-2012

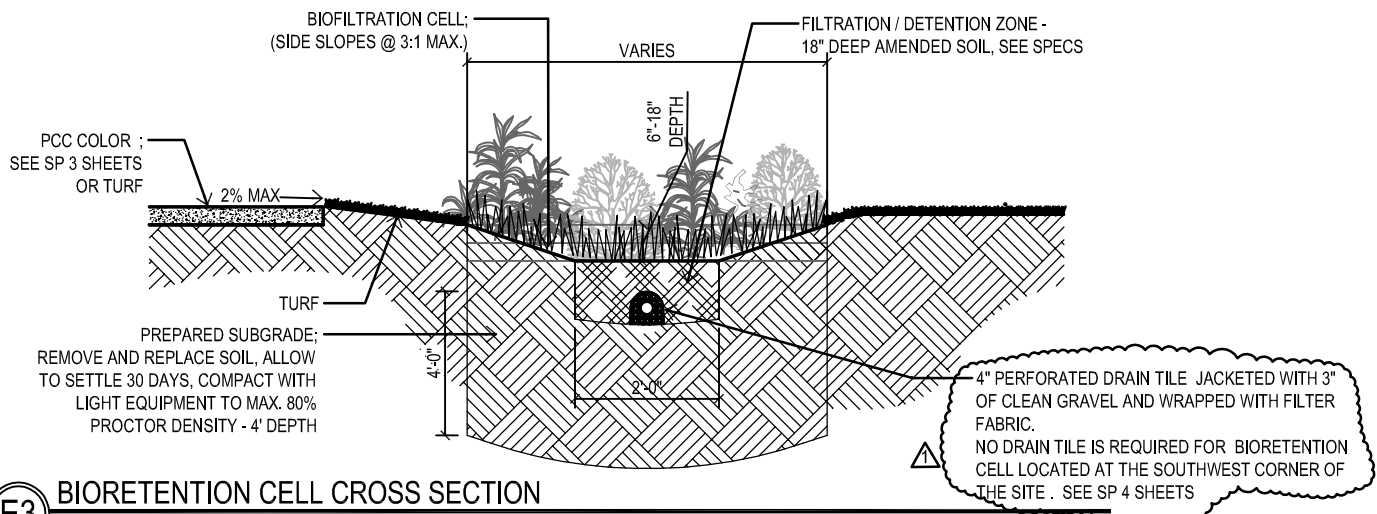
MODIFICATION: ADDENDUM G

REF'D SHEET: SP 5.2

REF'D DETAIL: B3

WINNEBAGO, NEBRASKA

2010.175
45.2
SDSP-04



E3 BIORETENTION CELL CROSS SECTION
 N.T.S. / DO NOT SCALE
 -2500

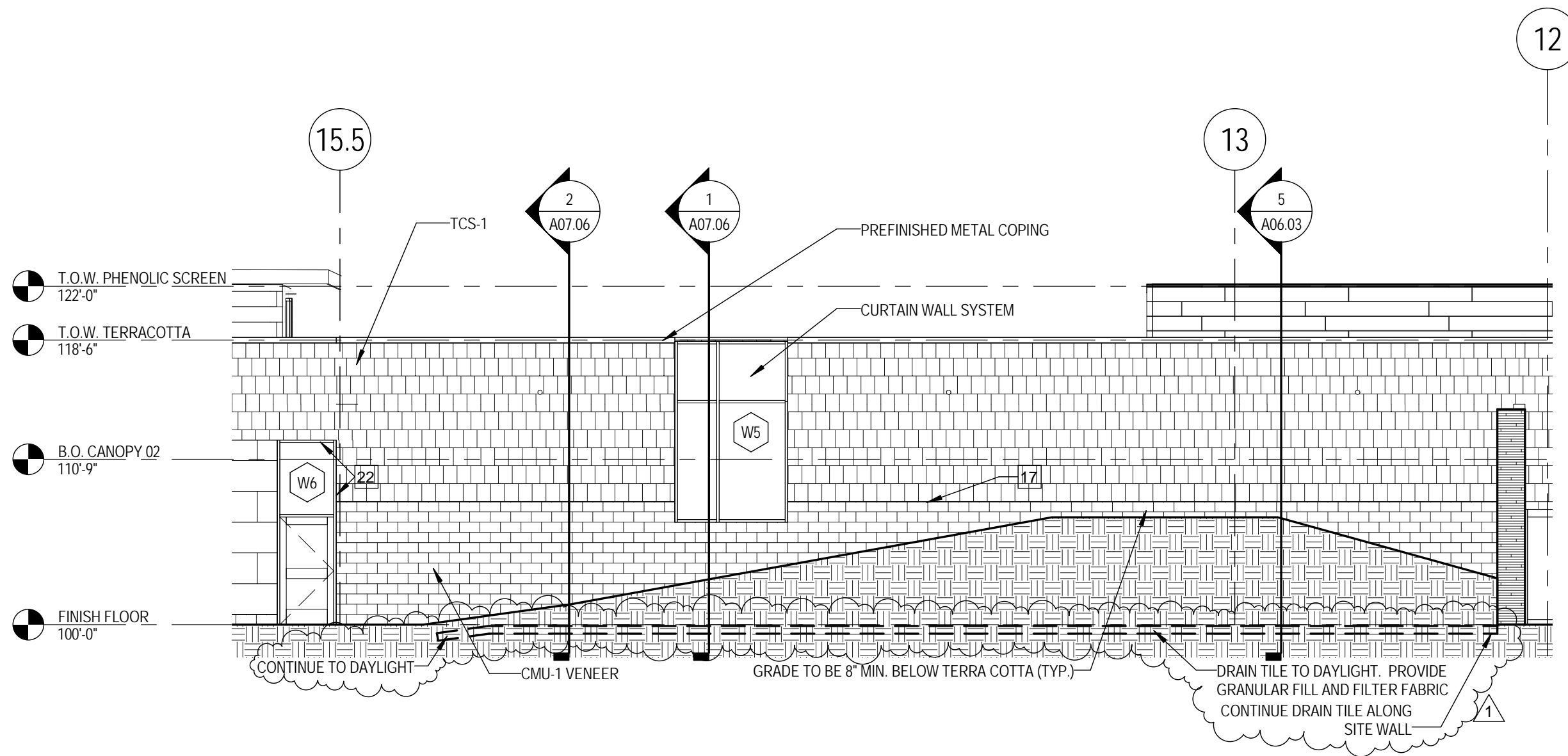


EDUCARE WINNEBAGO

WINNEBAGO, NEBRASKA

DATE 12-14-2012
 MODIFICATION: ADDENDUM G
 REF'D SHEET: SP 5.3
 REF'D DETAIL: E3

2010.175
 45.2
 SDSP-05



1

EXTERIOR ELEVATION - EAST

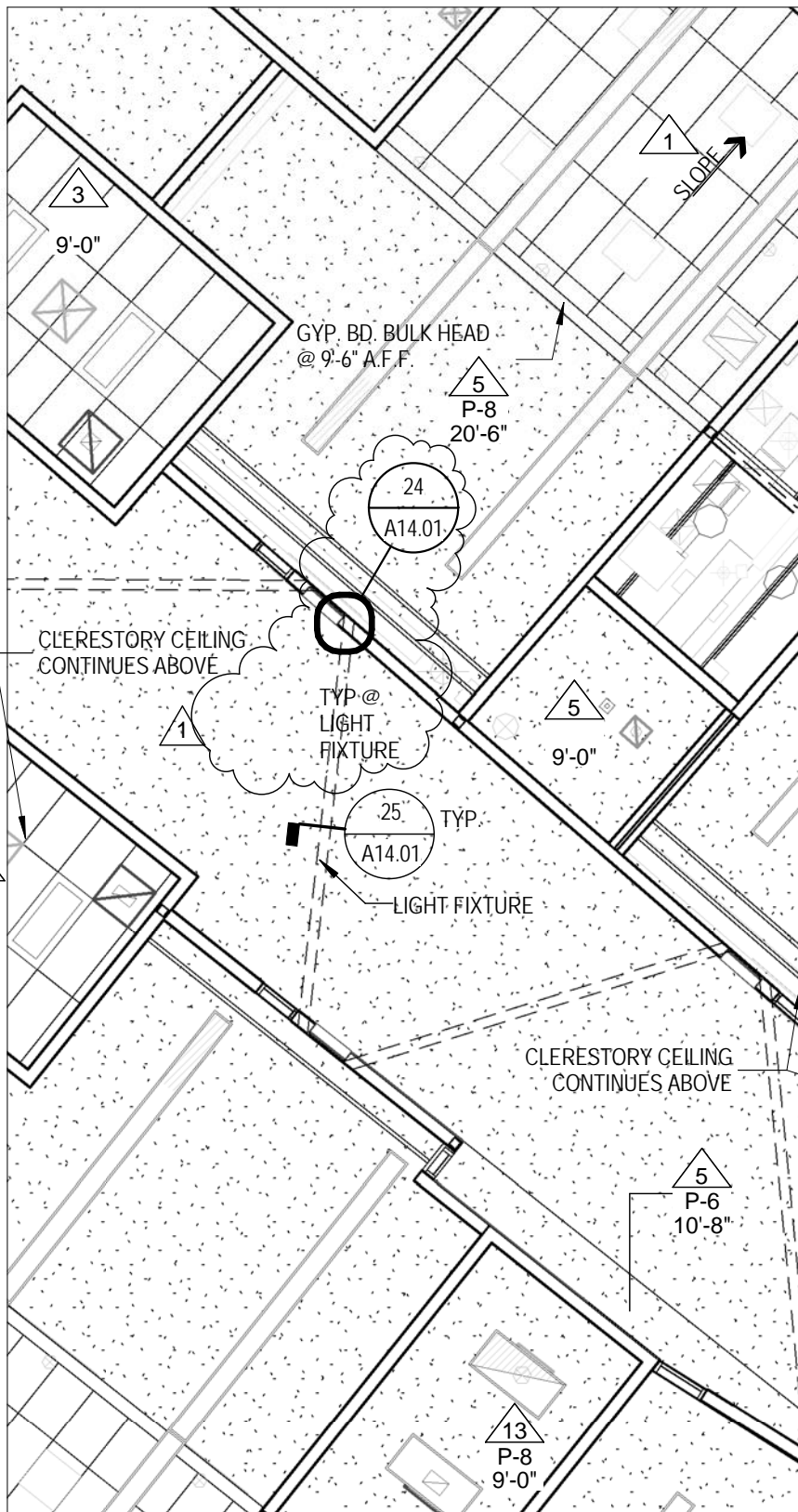
1/8" = 1'-0"



**EDUCARE
WINNEBAGO**
WINNEBAGO, NEBRASKA

DATE 12/13/12
 MODIFICATION: ADDENDUM G
 REF'D SHEET: A05.01
 REF'D DETAIL: 1

2010.175.01
 45.2
 SDA-007



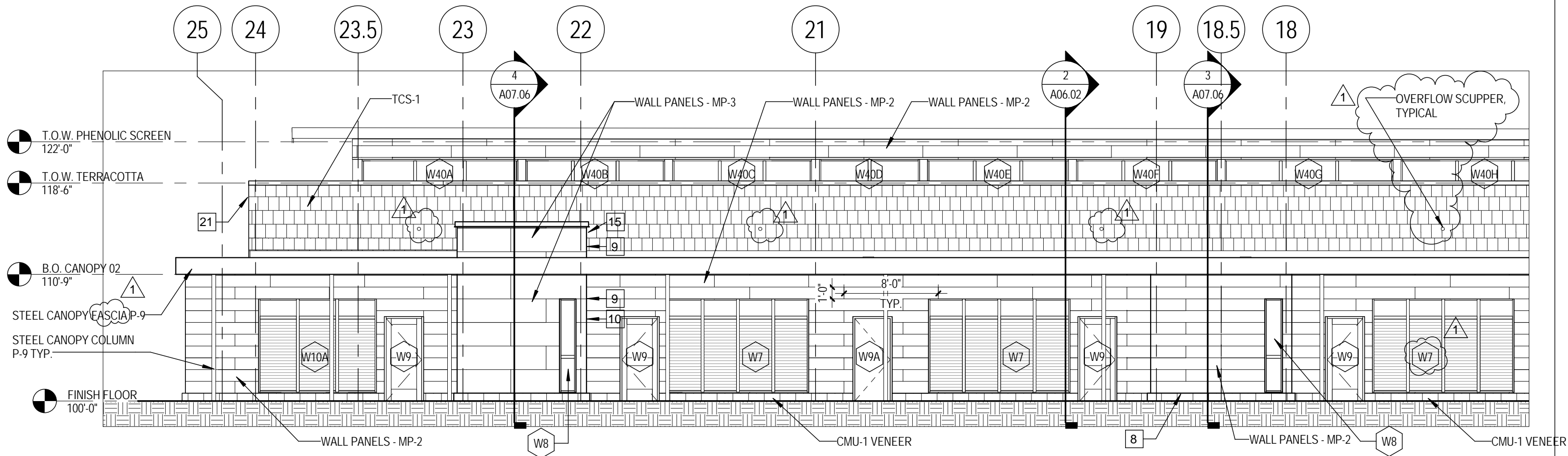
12 REFLECTED CEILING PLAN (PARTIAL)
 1/8" = 1'-0"



**EDUCARE
 WINNEBAGO**

DATE	12/13/12
MODIFICATION:	ADDENDUM G
REF'D SHEET:	A03.01
REF'D DETAIL:	12

2010.175.01
45.2
SDA-008



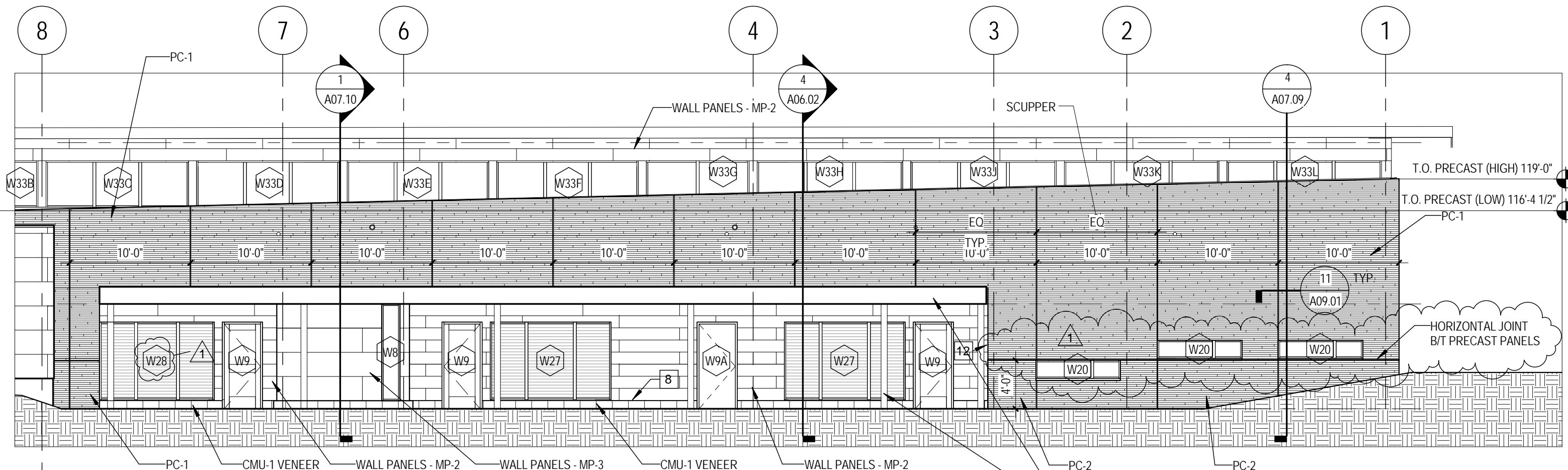
1 EXTERIOR ELEVATION - EAST
 1/8" = 1'-0"



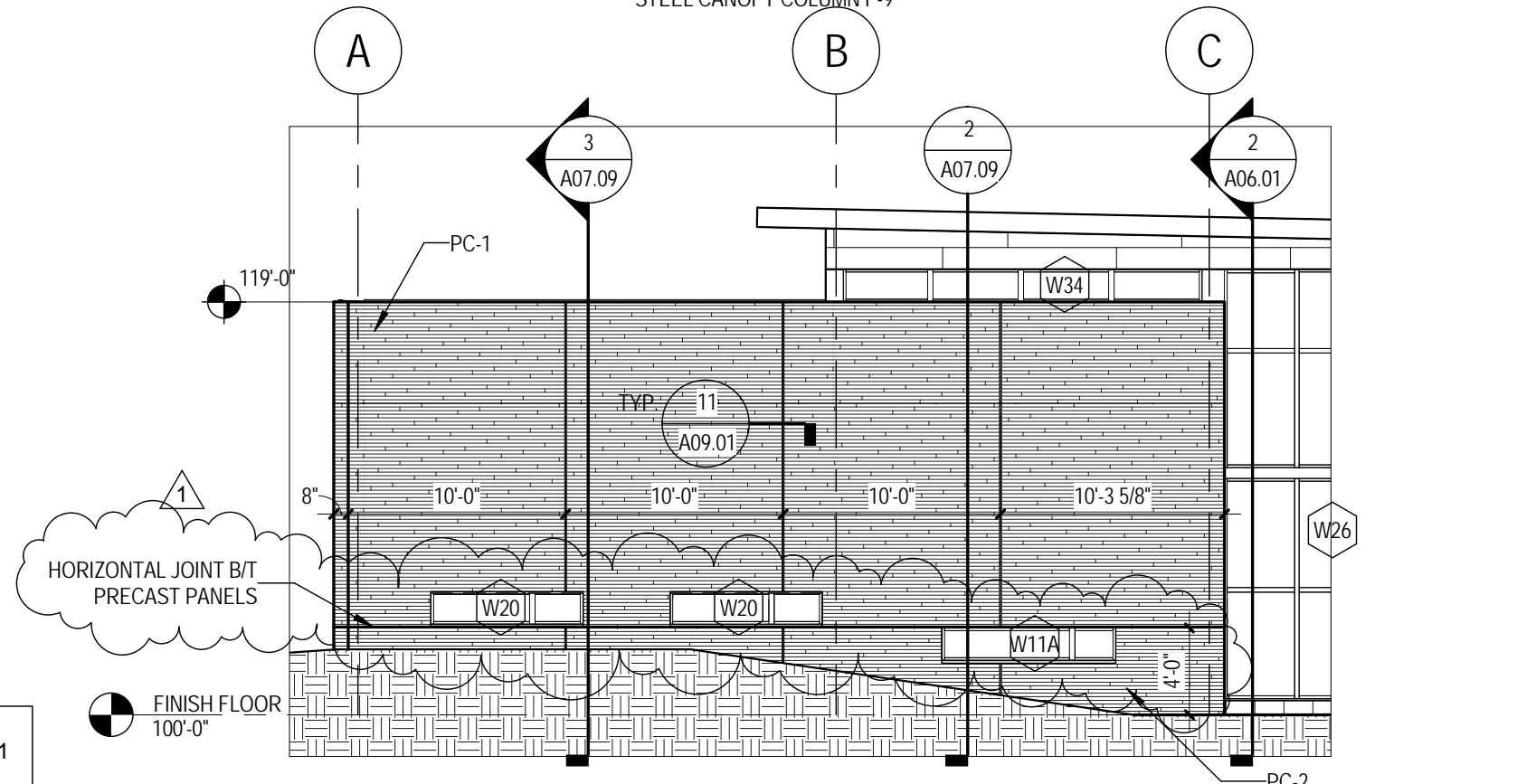
**EDUCARE
 WINNEBAGO**
 WINNEBAGO, NEBRASKA

DATE 12/13/12
 MODIFICATION: ADDENDUM G
 REF'D SHEET: A05.01
 REF'D DETAIL: 1

2010.175.01
 45.2
 SDA-009



3 EXTERIOR ELEVATION - NORTHEAST
 1/8" = 1'-0"



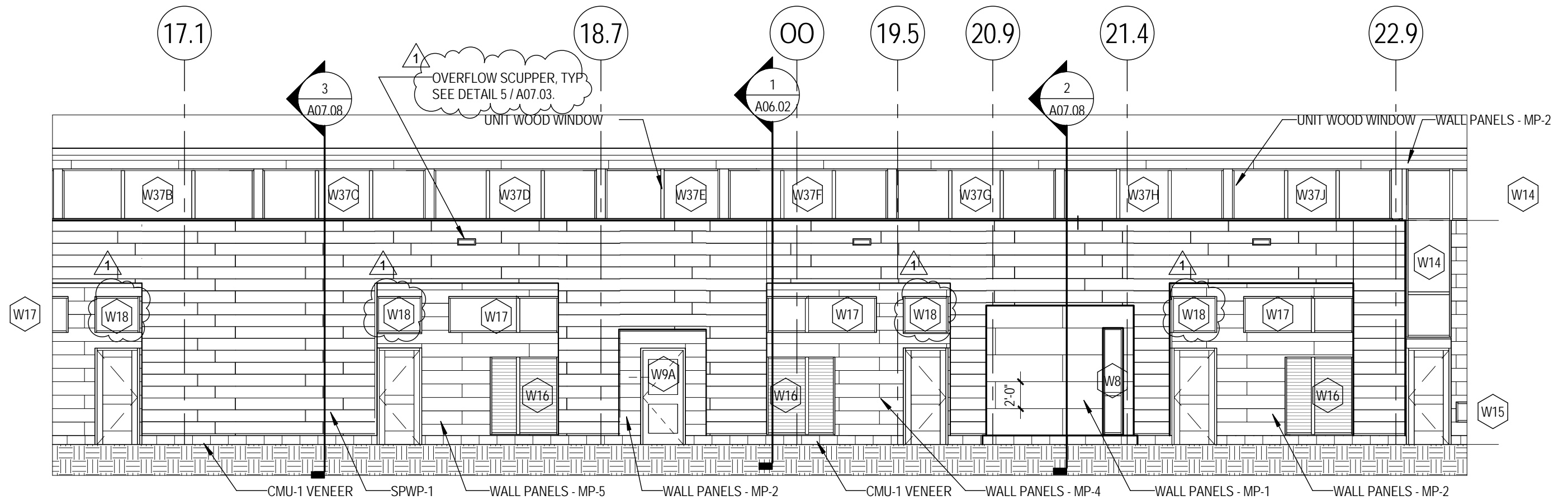
8 EXTERIOR ELEVATION - NORTHWEST
 1/8" = 1'-0"



EDUCARE WINNEBAGO
 WINNEBAGO, NEBRASKA

DATE 12/13/12
 MODIFICATION: ADDENDUM G
 REF'D SHEET: A05.01
 REF'D DETAIL: 3, 8

2010.175.01
 45.2
 SDA-010



*CLASSROOM CANOPIES NOT SHOWN FOR CLARITY OF EXTERIOR WALL ELEVATIONS

1 EXTERIOR ELEVATION - WEST

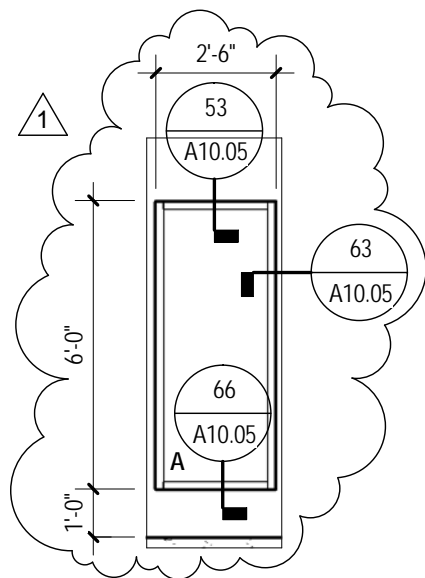
1/8" = 1'-0"



**EDUCARE
WINNEBAGO**
WINNEBAGO, NEBRASKA

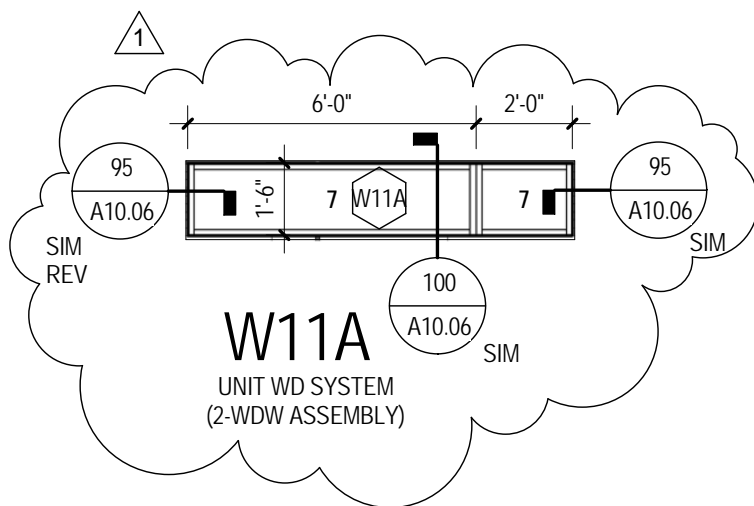
DATE 12/13/12
 MODIFICATION: ADDENDUM G
 REF'D SHEET: A05.01
 REF'D DETAIL: 1

2010.175.01
 45.2
 SDA-011



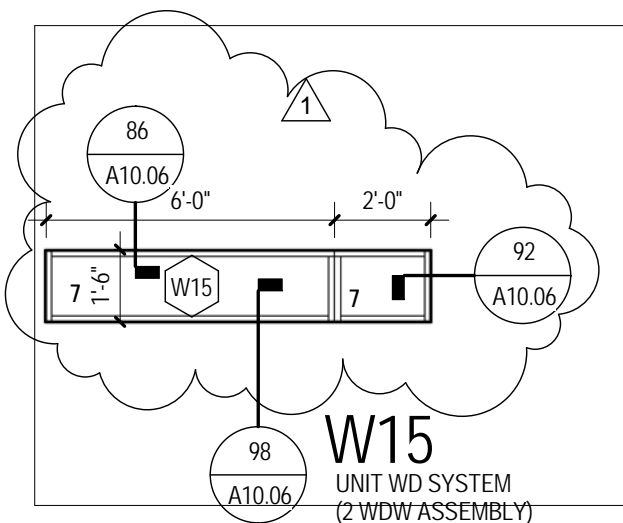
F20

ALUM STOREFRONT



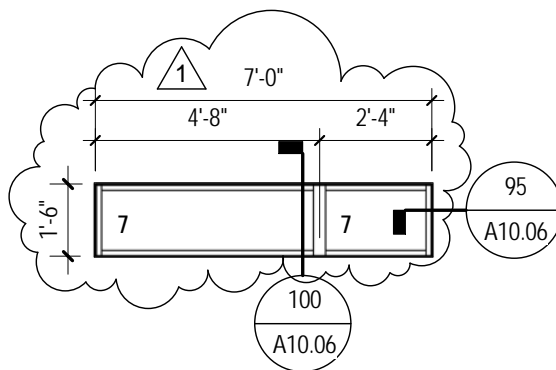
W11A

UNIT WD SYSTEM
(2-WDW ASSEMBLY)



W15

UNIT WD SYSTEM
(2 WDW ASSEMBLY)



W20

UNIT WD SYSTEM
(2-WDW ASSEMBLY)

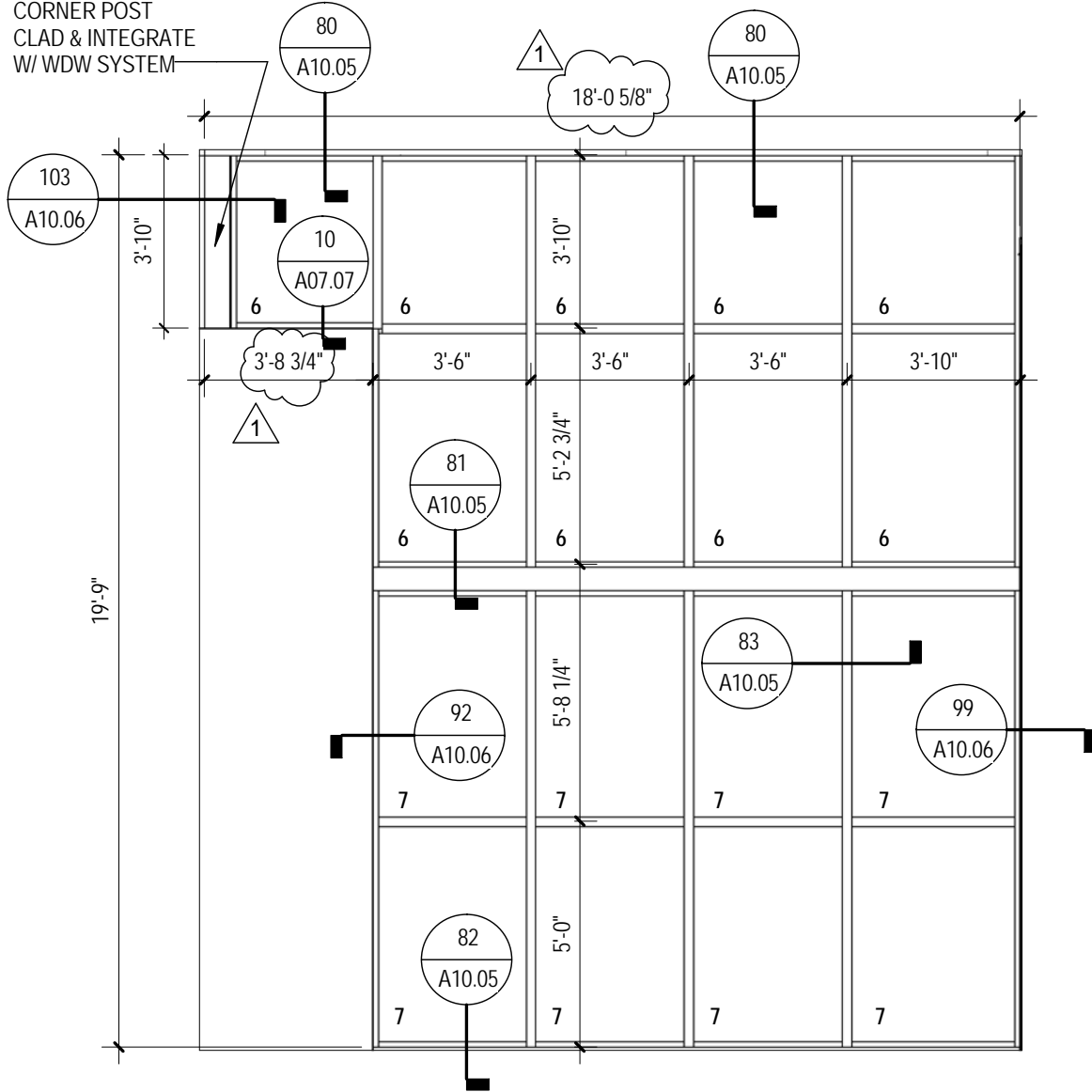


**EDUCARE
WINNEBAGO**

DATE 12/13/12
 MODIFICATION: ADDENDUM G
 REF'D SHEET: A10.01
 REF'D DETAIL: F20

2010.175.01
 45.2
SDA-012

CORNER POST
CLAD & INTEGRATE
W/ WDW SYSTEM



W12

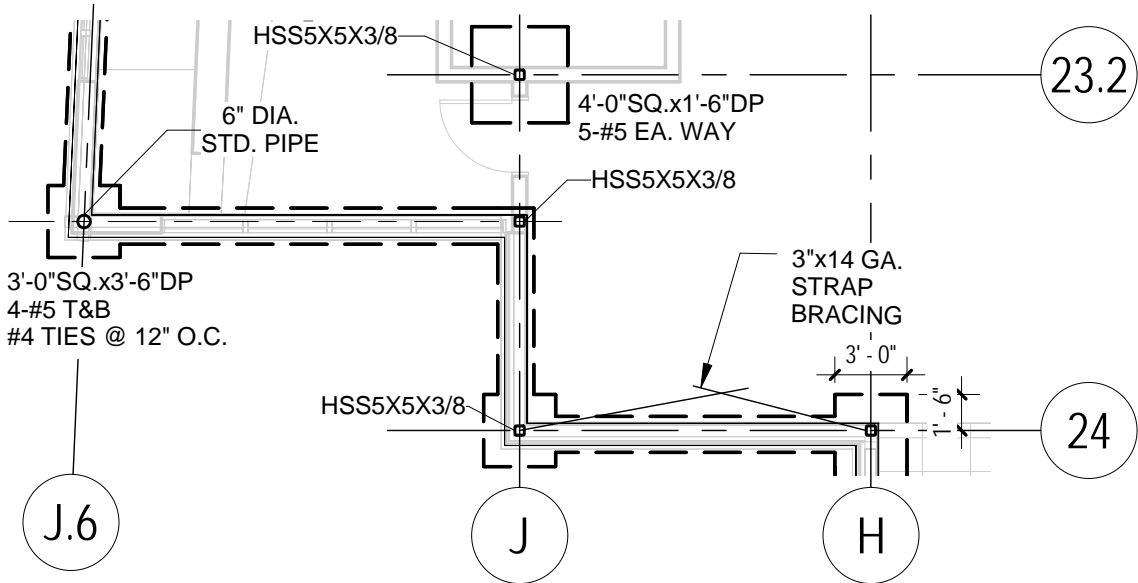
UNIT WD SYSTEM
(17-WDW ASSEMBLY)



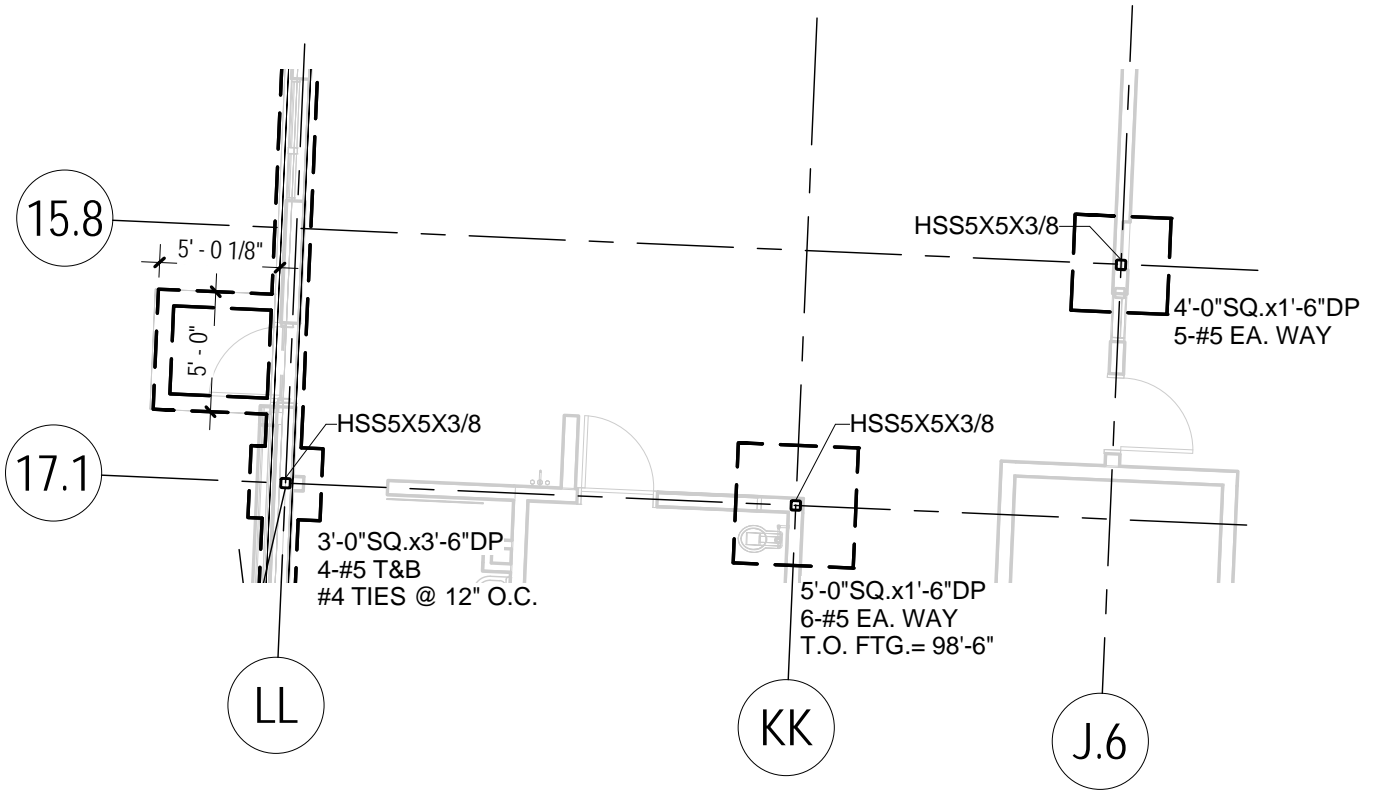
**EDUCARE
WINNEBAGO**

DATE 12/13/12
MODIFICATION: ADDENDUM G
REF'D SHEET: A10.02
REF'D DETAIL: W12

2010.175.01
45.2
SDA-013



1 PARTIAL FOUNDATION PLAN
 1/8" = 1'-0"



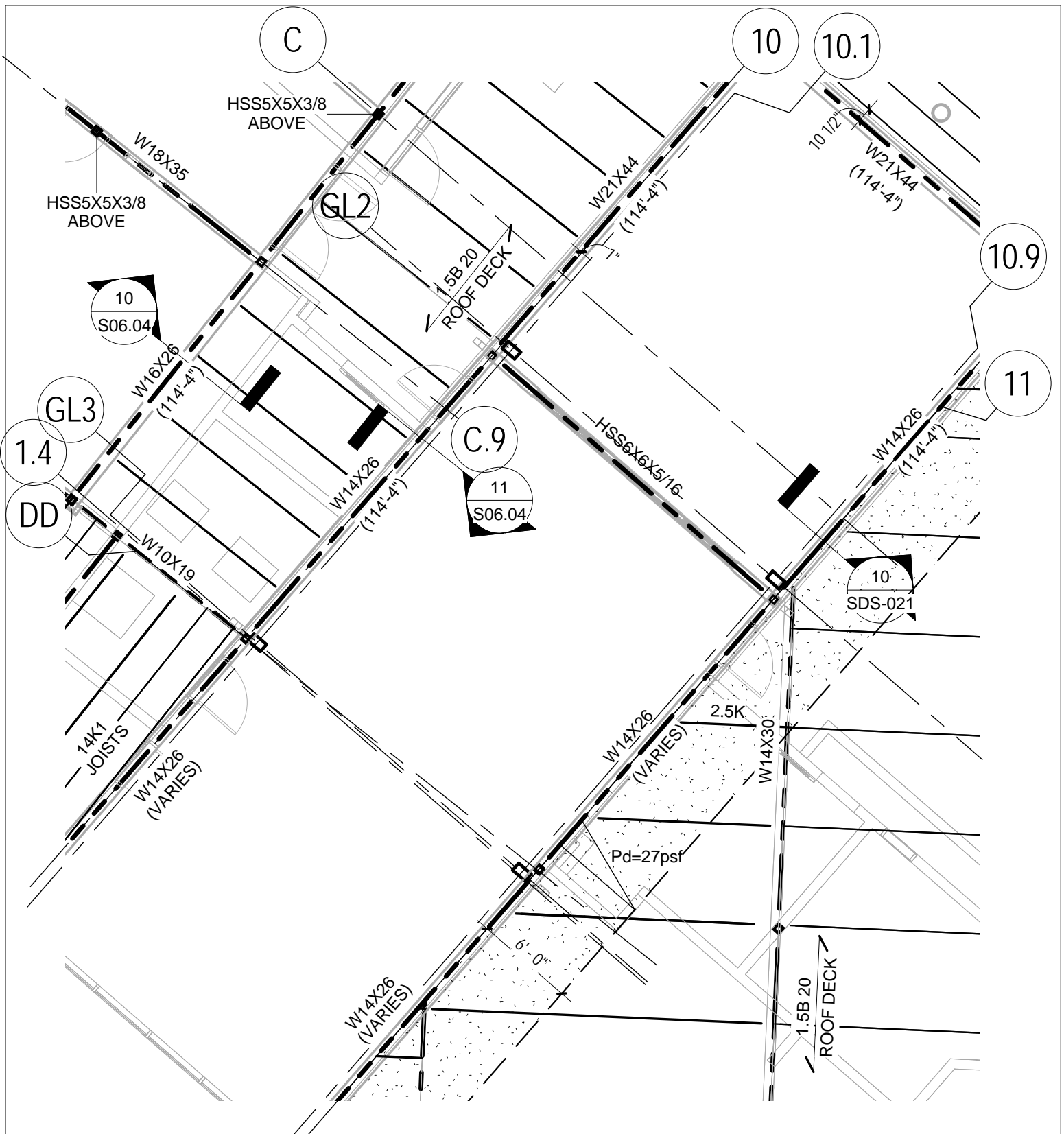
2 PARTIAL FOUNDATION PLAN
 1/8" = 1'-0"



**EDUCARE
 WINNEBAGO**
 WINNEBAGO, NEBRASKA

DATE 12/14/12
 MODIFICATION:
 REF'D SHEET: S01.02
 REF'D DETAIL:

2010.175.01
 SDS-018



1

PARTIAL ROOF FRAMING PLAN

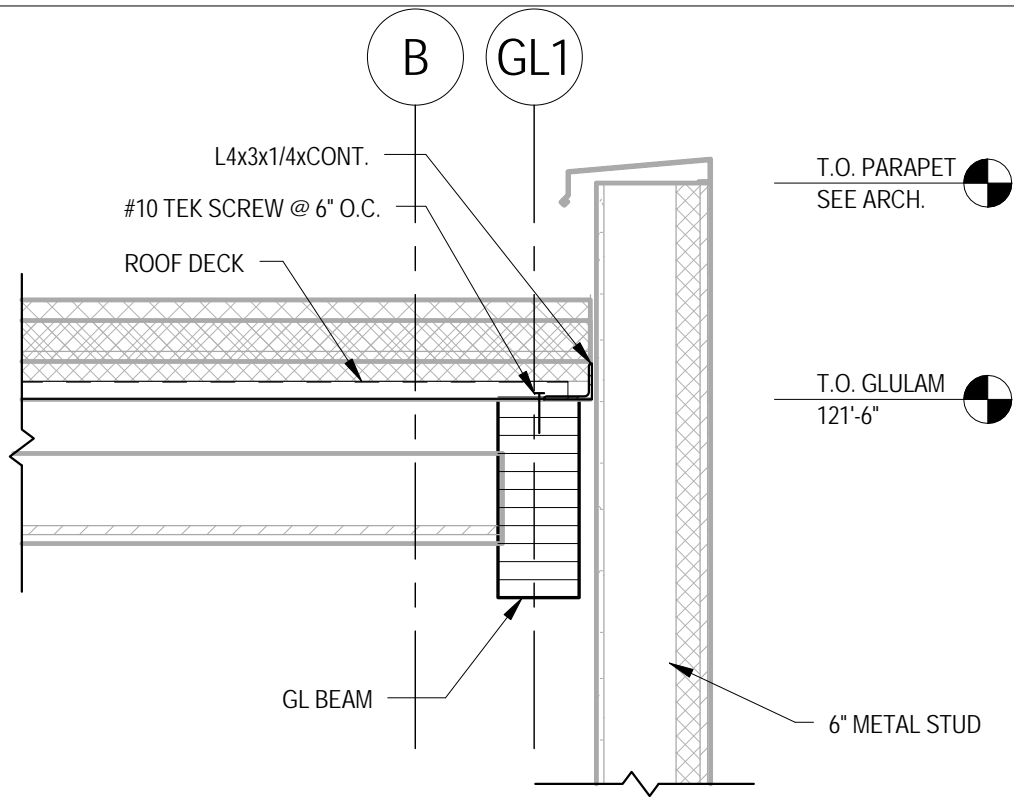
1/8" = 1'-0"



**EDUCARE
WINNEBAGO**
WINNEBAGO, NEBRASKA

DATE: 12/14/12
 MODIFICATION:
 REF'D SHEET: S02.01
 REF'D DETAIL:

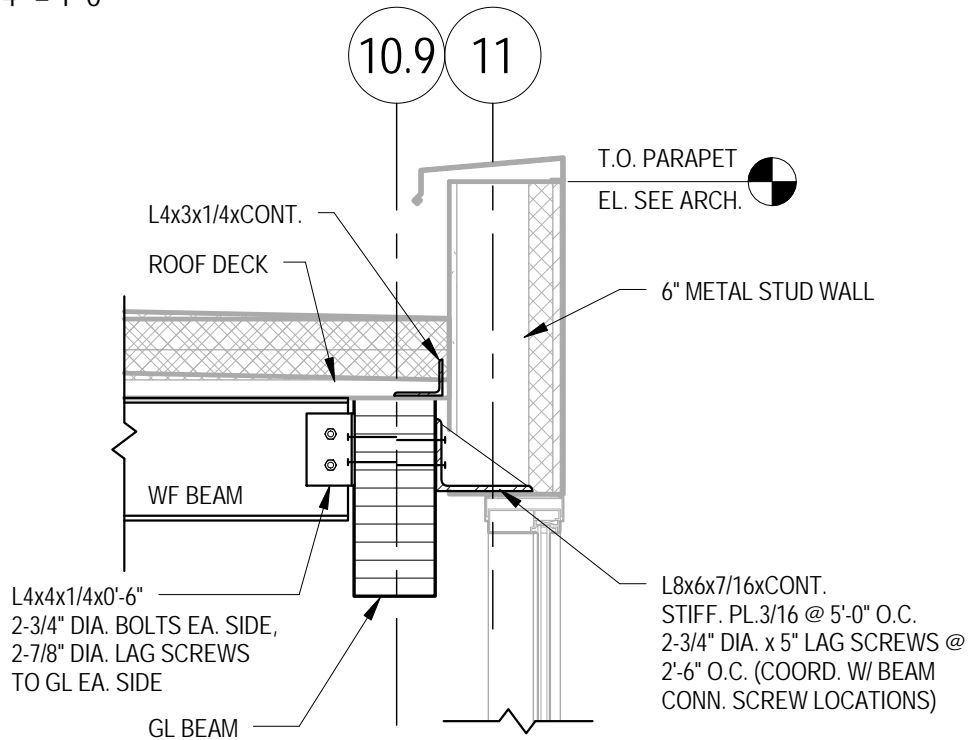
2010.175.01
 SDS-020



9

ROOF SECTION

3/4" = 1'-0"



10

ROOF SECTION

3/4" = 1'-0"

RDg...
PLANNING • DESIGN

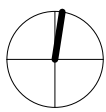
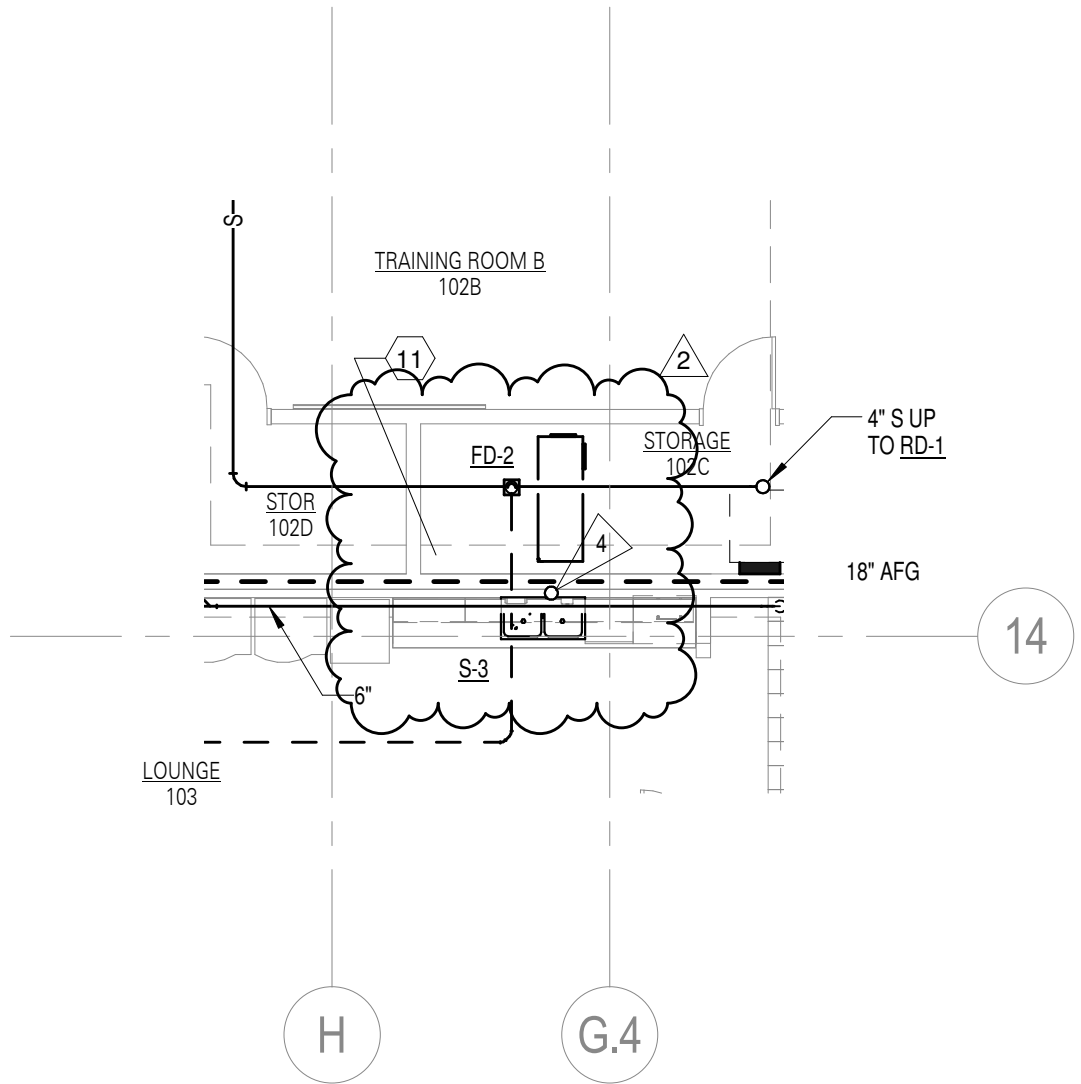
**EDUCARE
WINNEBAGO**

WINNEBAGO, NEBRASKA

DATE 12/14/12
MODIFICATION:
REF'D SHEET: S06.05
REF'D DETAIL: 9 & 10

2010.175.01

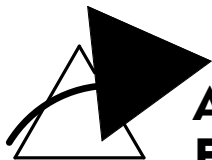
SDS-021



1

FLOOR PLAN - NORTH - SEWER

1/8" = 1'-0"



**Alvine
Engineering**

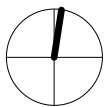
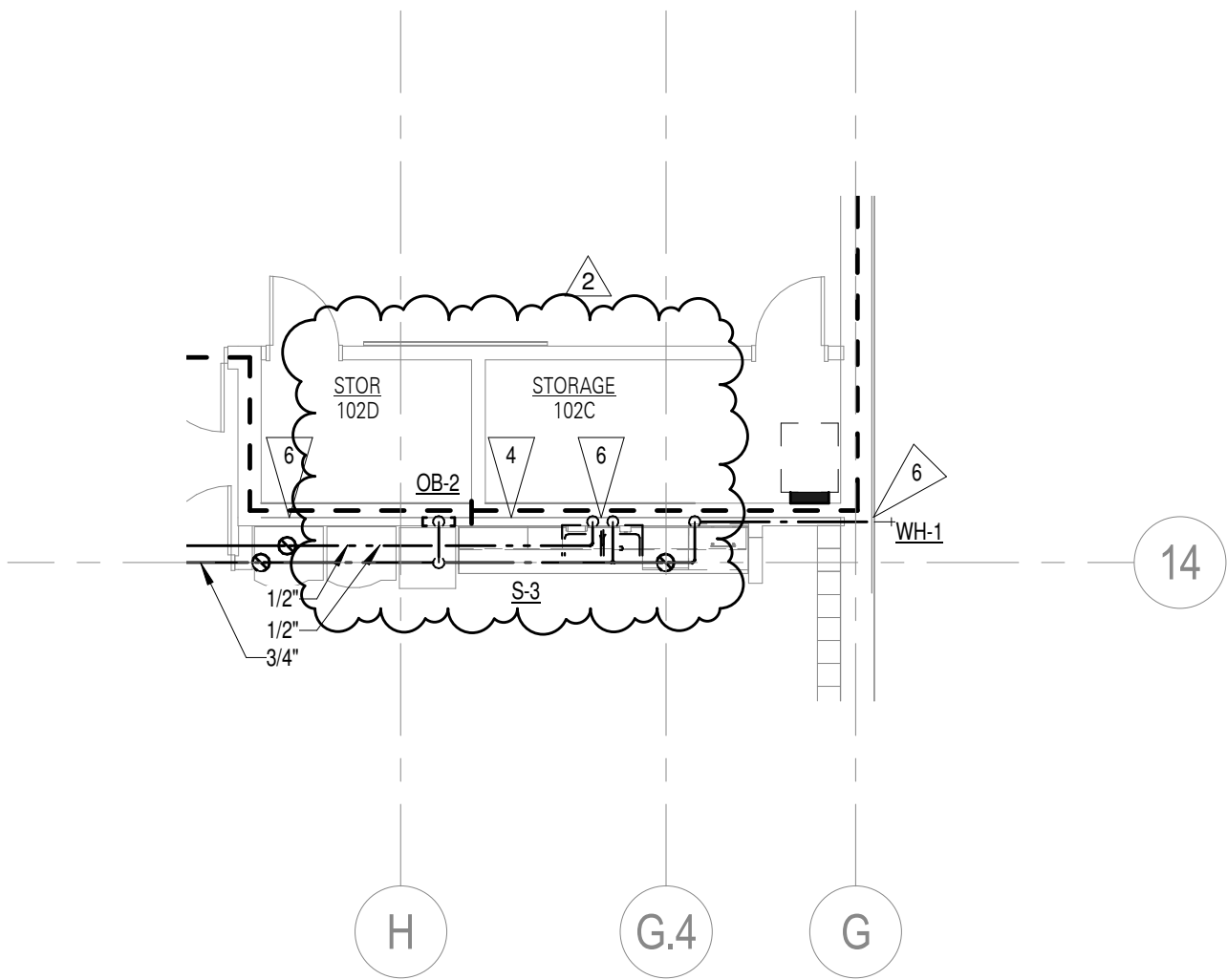
EDUCARE WINNEBAGO

PROJECT NO.
20122634

DATE
12/14/12

DRAWING REFERENCED: P01.01
ADDENDUM NO.: G

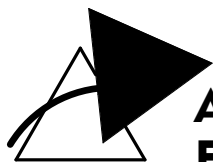
SKETCH
MS-3



1

FLOOR PLAN - NORTH - PLUMBING

1/8" = 1'-0"



**Alvine
Engineering**

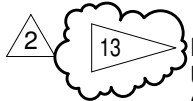
EDUCARE WINNEBAGO

PROJECT NO.
20122634

DATE
12/14/12

DRAWING REFERENCED: P01.03
ADDENDUM NO.: G

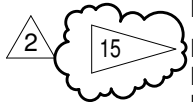
SKETCH
MS-4



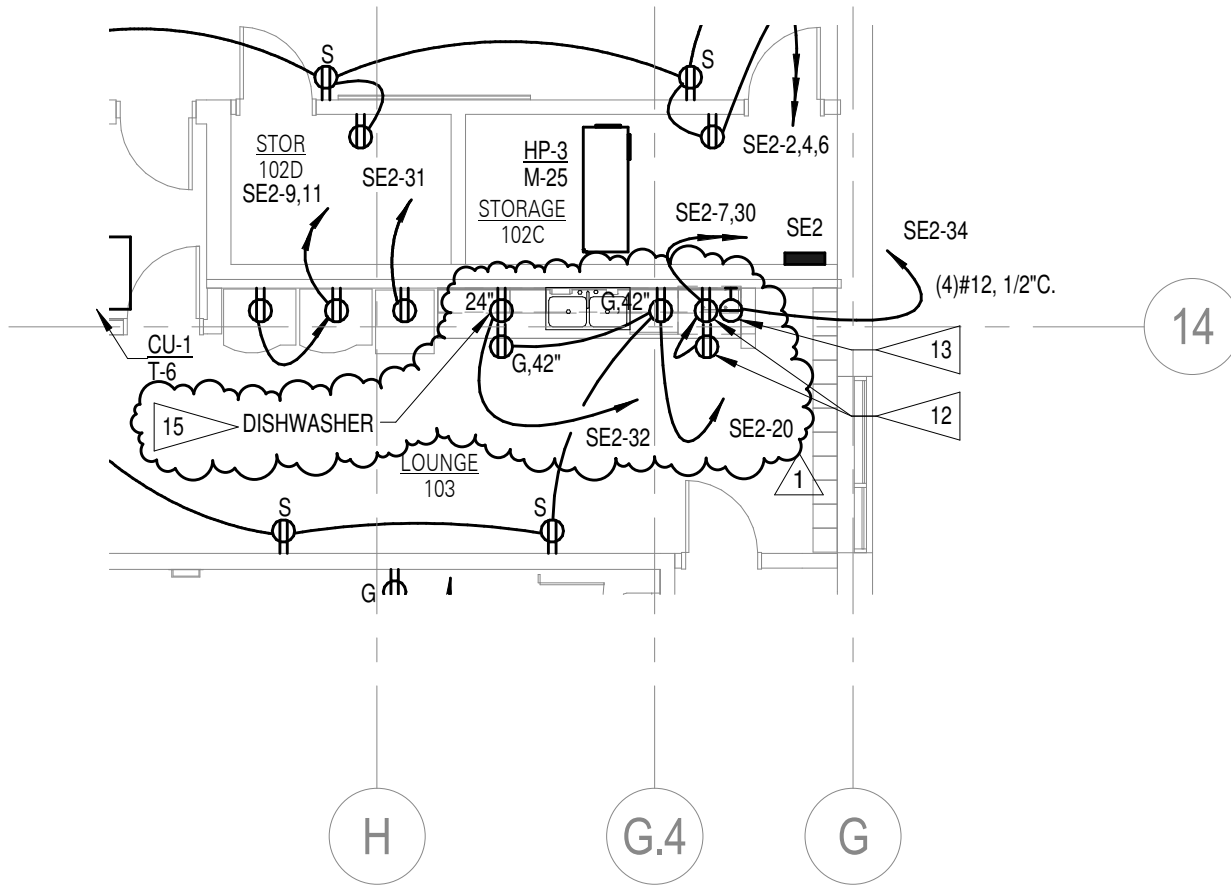
PROVIDE PLUG AND CORD CONNECTION FOR UNDERCOUNTER OVEN. COORDINATE RECEPTACLE CONFIGURATION WITH EQUIPMENT MANUFACTURER. VERIFY ACCESSIBLE RECEPTACLE LOCATION WITH CASEWORK DETAILS.



SURFACE MOUNT RECEPTACLE WITHIN CASEWORK FOR CABLE CUBBY PLUG AND CORD CONNECTION. VERIFY FINAL LOCATION WITHIN CASEWORK DETAILS.



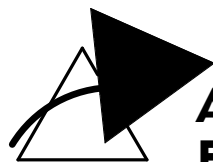
PROVIDE PLUG AND CORD CONNECTION FOR DISHWASHER. VERIFY ACCESSIBLE RECEPTACLE LOCATION WITH CASEWORK DETAILS



1

FLOOR PLAN NORTH - POWER

1/8" = 1'-0"



**Alvine
Engineering**

EDUCARE WINNEBAGO

PROJECT NO. 20122634	DATE 12/13/12	DRAWING REFERENCED: E02.01 ADDENDUM NO.: G	SKETCH ES-4
-------------------------	------------------	---	----------------

SECTION 010100 – SUMMARY OF WORK – #04-08 GLUED-LAMINATED CONSTRUCTION

PART 1 - GENERAL

1.1 RELATED DOCUMENTS

- A. All Drawings, Specifications, Addenda, Bulletins and general provisions of the Contract, including Bidding And Contract Requirements (Division 00) and General Requirements (Division 01) of the Specifications, apply to this Section.

1.2 WORK COVERED BY CONTRACT DOCUMENT

- A. Provide all material and other items necessary for the following sections:
 - Section 06 18 00 – Glued-Laminated Construction

Contract includes, but is not limited to the following:

- 1. All permits, bonds, licenses, and applicable fees as required.
 - 2. All submittals and shop drawings shall be submitted to the Construction Manager within 20 working days unless noted otherwise or required by contractually agreed upon schedule.
 - 3. All closeout procedures, documentation, and warranties as required.
 - 4. Compliance with applicable OSHA and Construction Manager Safety Standards and Regulations, the more stringent will apply to all issues. Coordinate with and promptly act on any safety concerns noted by the Construction Manager.
 - 5. Conformance with all city and local jurisdictional requirements.
 - 6. Coordinate all tests and inspections.
 - 7. Overtime, if required, to meet commitment to schedule.
 - 8. All glulam and miscellaneous steel connections on drawings are to be provided, unloaded and erected by others. No steel to be provided in this bid package.
 - 9. Provide all linear wood ceiling deck on glulams to be installed by others.
- A. Contract Documents were prepared for the Project by RDG Planning · Design
 - 1. Project Location: Winnebago, NE
 - 2. Owner: Winnebago Tribe of Nebraska

1.3 WORK SEQUENCE/SCHEDULE

- A. See Milestone schedule for dates affecting this scope of work. A detailed activity schedule will be provided and become part of the Contractor Agreement prior to award of this contract.

1.4 CONTRACTOR USE OF PREMISES

- A. Use of the Site: Limit use of the premises to work in areas indicated. Confine operations to areas within contract limits indicated. Do not disturb portions of the site beyond the areas in which the Work is indicated.
- B. Smoking: Sampson Construction does not allow smoking or the use of any tobacco products within the building footing. This applies to contractors and subcontractors.

END OF SUMMARY OF WORK

