



## **ADDENDUM NO. 4**

---

### **1.01 NOTICE TO BIDDERS**

- A. Date: 6 December 2012
- B. From: Bahr, Vermeer and Haecker Architects, Ltd.
- C. To: Prospective Bidders.
- D. Project: Lexington Public Schools  
Lexington Middle School / Community Recreation Facility Addition  
Bid Package No. 8  
Lexington, Nebraska
- E. This addendum is issued by the Architect to all bidders of record prior to receipt of proposals. Bidders shall acknowledge receipt of this addendum by so indicating on the Bid Form. Failure to do so may subject Bidder to disqualification.
- F. All information and instructions given herein shall become a part of the Contract Documents.
- G. This Addendum contains one (1) total pages with four (4) attachments.

### **1.02 DRAWINGS – STRUCTURAL**

- A. Sheet S1.0B BP.8 – AREAS A & B FOUNDATION PLAN
  - 1. Delete this sheet in it's entirety and replace with the attachment "Sheet S1.0B-R BP.8".
- B. Sheet S1.0C BP.8 – AREA C FOUNDATION PLAN
  - 1. Delete this sheet in it's entirety and replace with the attachment "Sheet S1.0C-R BP.8".
- C. Sheet S1.0D BP.8 – AREA D FOUNDATION PLAN
  - 1. Delete this sheet in it's entirety and replace with the attachment "Sheet S1.0D-R BP.8".
- D. Sheet S2.1 BP.8 – TYPICAL DETAILS
  - 1. Delete this sheet in it's entirety and replace with the attachment "Sheet S2.1-R BP.8". A new detail, "D9 – TOP FTG STEP DETAIL" was added to this sheet.

**END OF ADDENDUM No. 4**



ARCHITECT  
 BAHR VERMEER HAECKER ARCHITECTS  
 440 N 8TH ST STE 100  
 LINCOLN, NE 68508  
 V 402 475 4551  
 F 402 475 0226  
 bvh.com

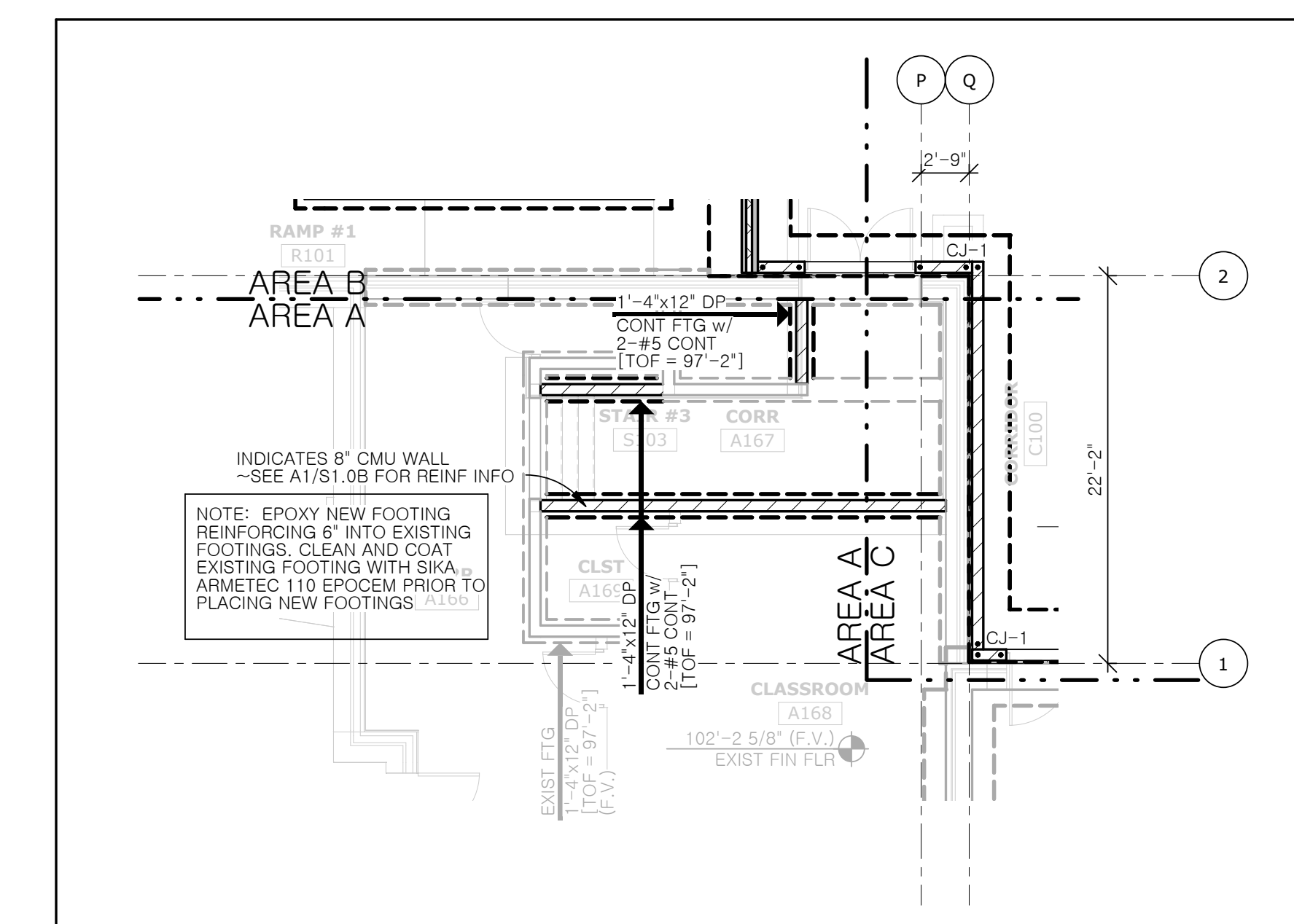
CONSULTING ENGINEERS  
 R. O. YOUKER, INC.  
 1001 O STREET SUITE 110  
 LINCOLN, NE 68508  
 V 402 475 7231  
 F 402 475 7231  
 www.royouker.com

MEP ENGINEER  
 ENGINEERING TECHNOLOGIES, INC.  
 825 M STREET, SUITE 200  
 LINCOLN, NE 68508  
 V 402 476 1273  
 F 402 476 1274  
 www.eti-engineers.com

CIVIL ENGINEER  
 REGA ENGINEERING GROUP  
 1620 SOUTH 76TH ST, SUITE 103  
 LINCOLN, NE 68506  
 V 402 484 7342  
 F 402 484 7344  
 www.regaengineering.com

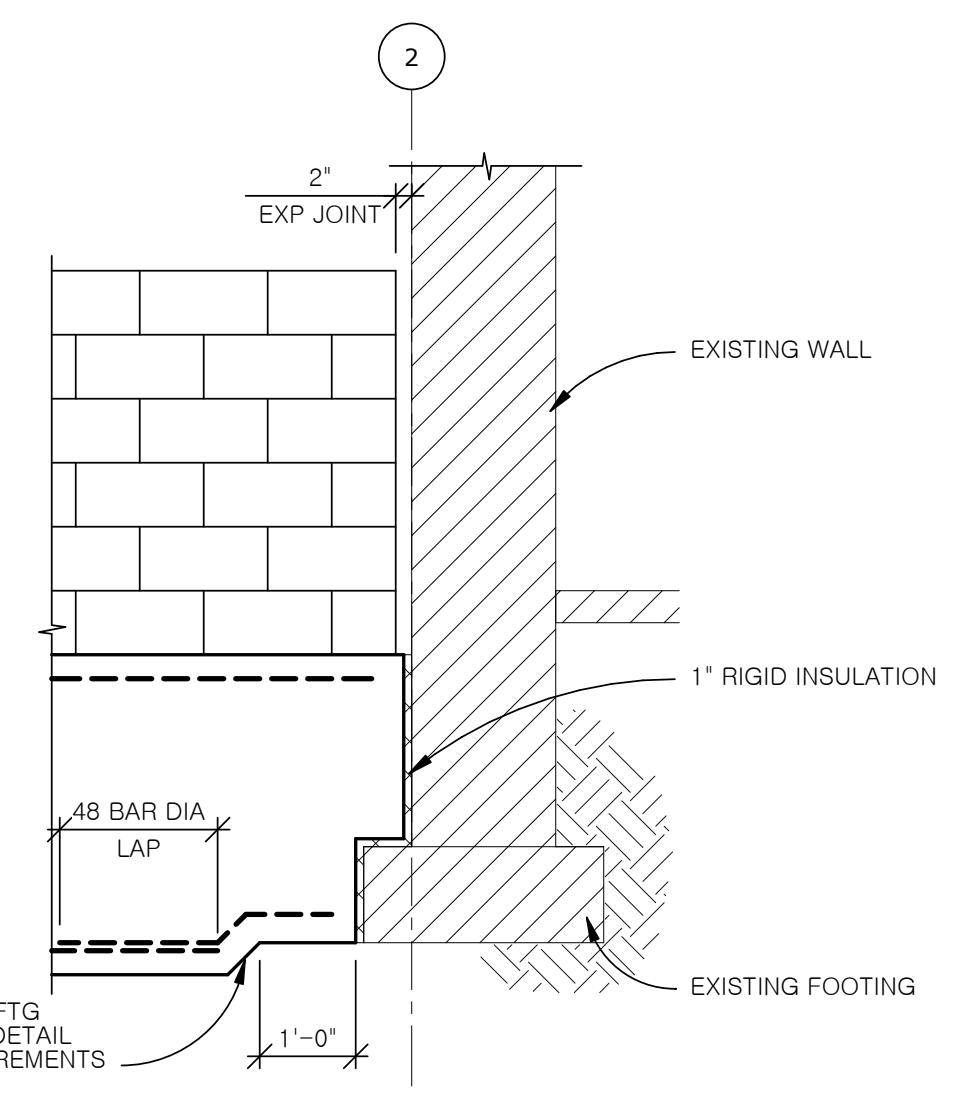
FOODSERVICE CONSULTANT  
 ROGER KRUSE ASSOCIATES  
 6818 GROVER STR, SUITE 101  
 OMAHA, NE 68106  
 V 402 955 2700  
 F 402 955 2800

NOTE: CONSTRUCTION MANAGER SHALL COORDINATED FOOTING STEP LOCATIONS AND PRECAST PANEL EMBED LOCATIONS WITH PRECAST SUPPLIER PRIOR TO FOUNDATION CONSTRUCTION. MIN 2 EMBED PER PANEL. INSTALLATION OF EMBEDS IS TO BE INCLUDED IN BP.8 PRICING.



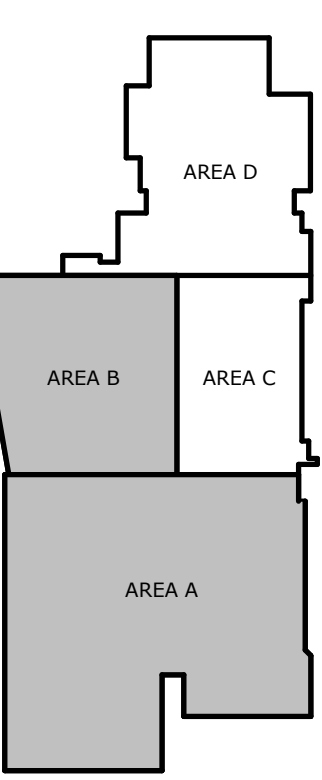
M19 AREA A - PARTIAL FOUNDATION PLAN

SCALE: 1/8" = 1'-0"



MARK	DATE	DESCRIPTION
1	12-6-2012	Addendum #4

KEY PLAN



LEXINGTON MIDDLE SCHOOL AND COMMUNITY RECREATION FACILITY ADDITION

PROJECT: L12022 DATE: 12-6-2012

© COPYRIGHT BAHR VERMEER HAECKER ARCHITECTS

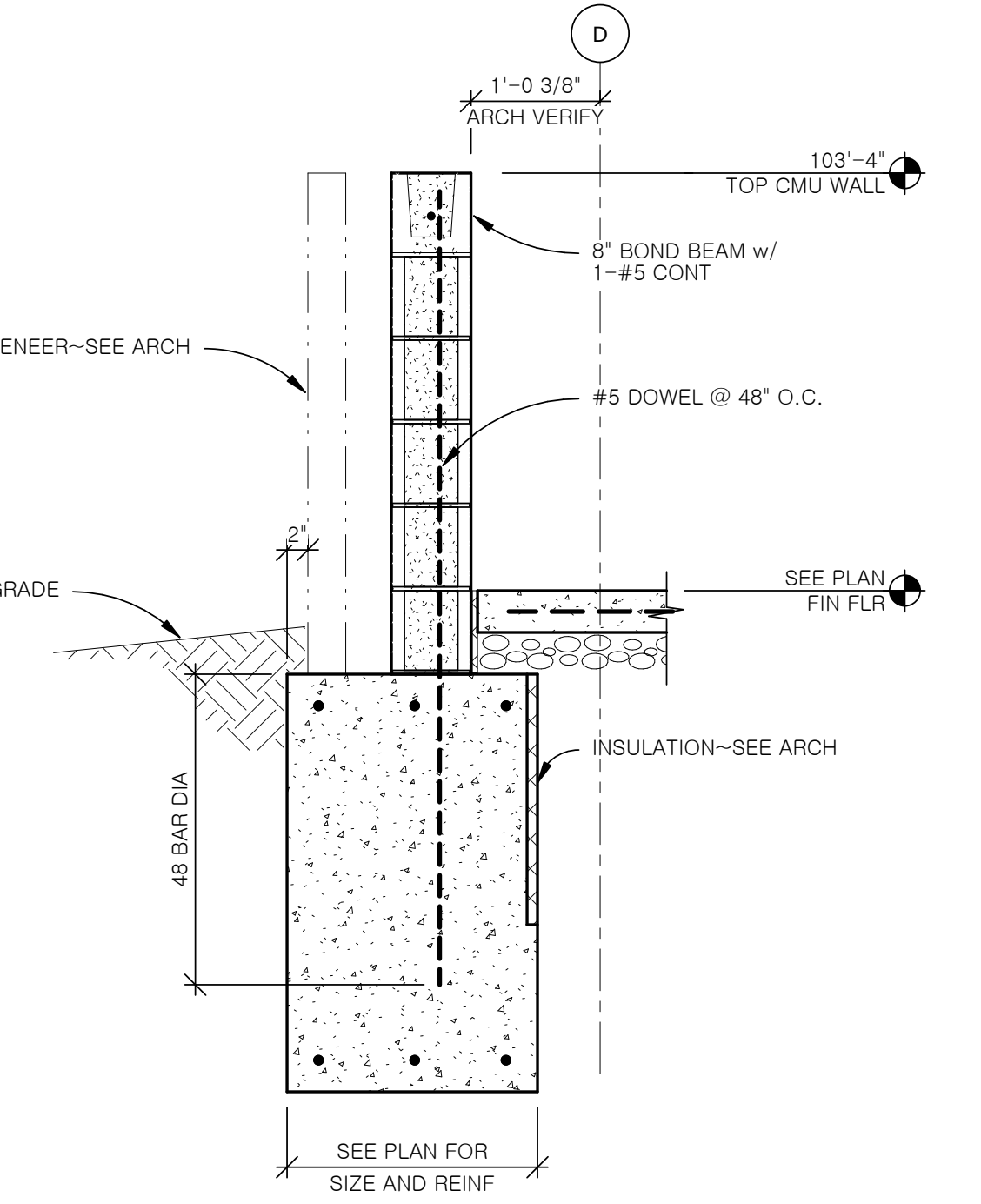
FOR FOUNDATION PERMIT ONLY

AREA A AND B FOUNDATION PLAN

NORTH  
**S1.0B-R**  
**BP.8**

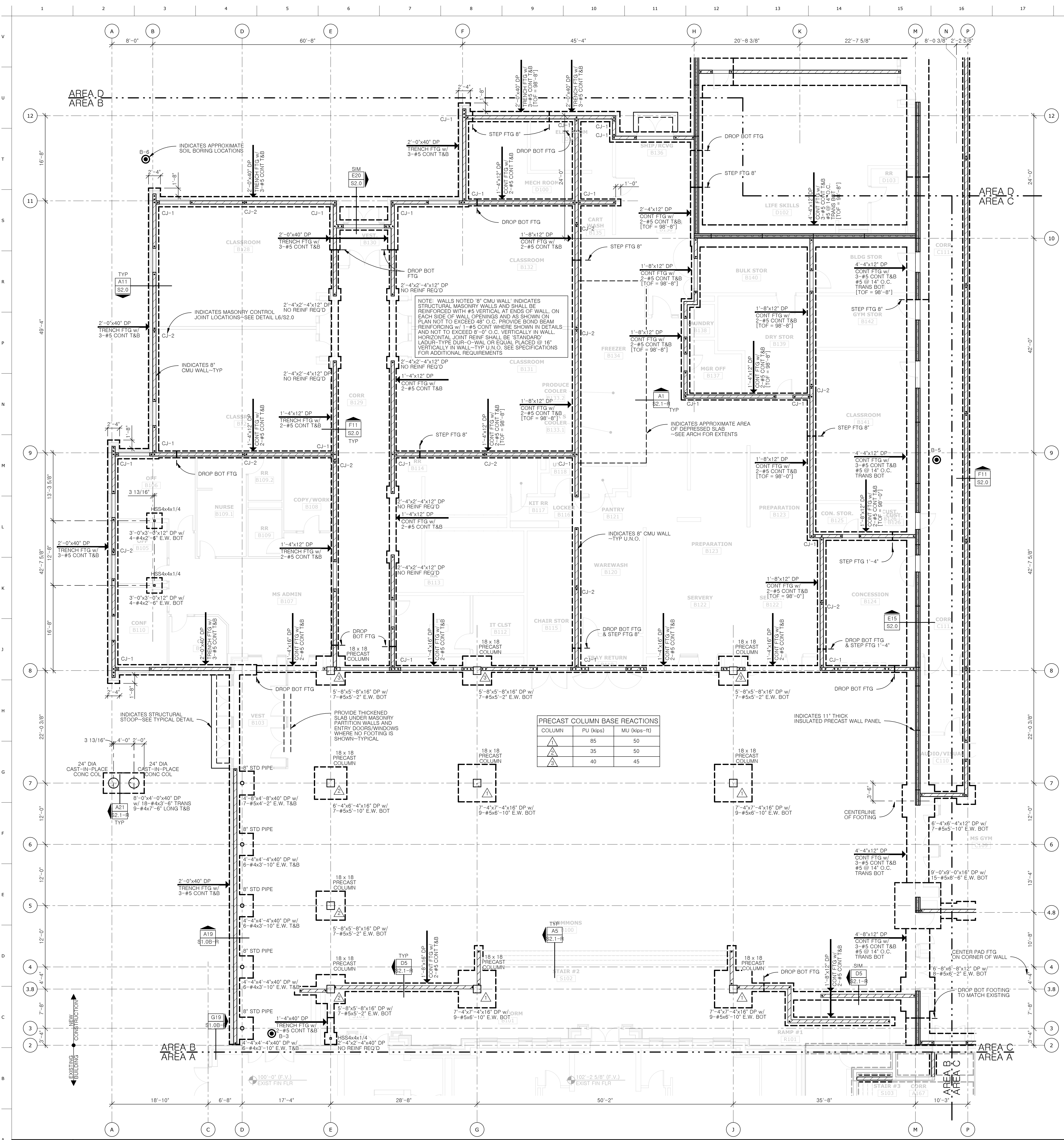
G19 NEW TO EXIST FOOTING DETAIL

SCALE: 1/2" = 1'-0"



A19 CMU WALL FOUNDATION DETAIL

SCALE: 3/4" = 1'-0"

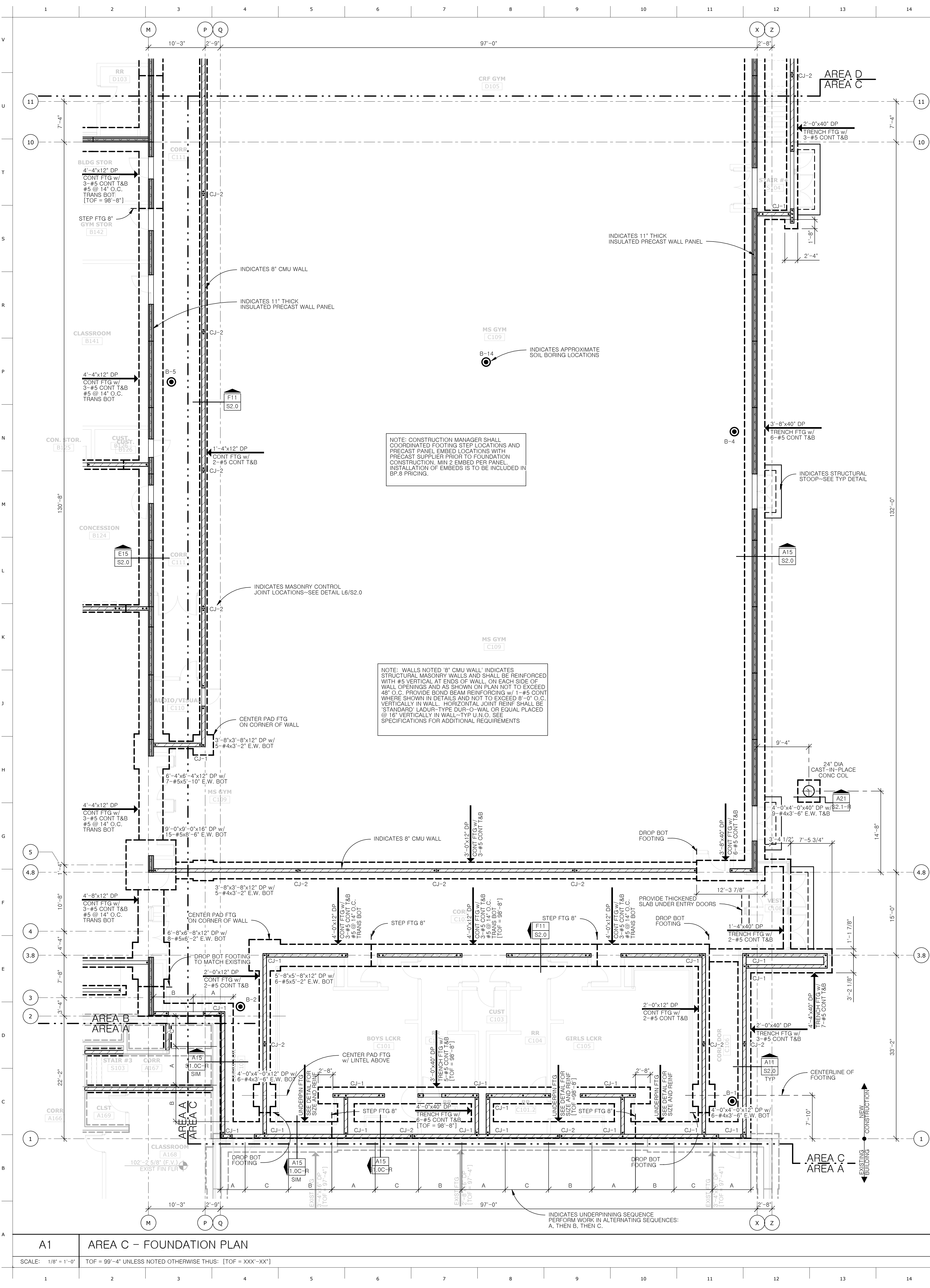


PRECAST COLUMN BASE REACTIONS

COLUMN	PU (kips)	MU (kips-ft)
▲	85	50
▲	35	50
▲	40	45

A1 AREA B - FOUNDATION PLAN

SCALE: 1/8" = 1'-0" TOF = 99'-4" UNLESS NOTED OTHERWISE THUS: [TOF = XXX'-XXX"]

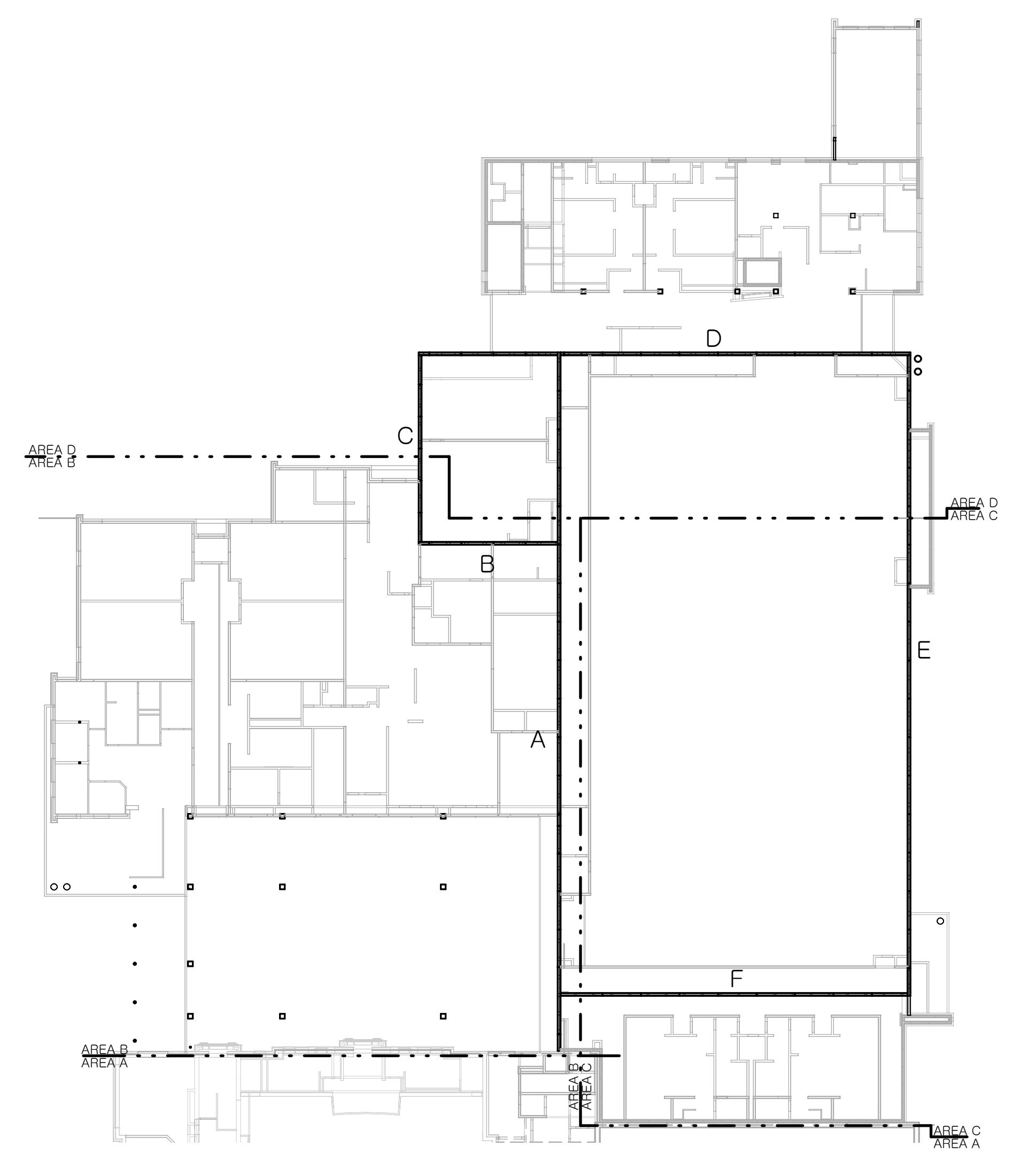


ULTIMATE DESIGN SEISMIC FORCES (KIPS) FOR PRECAST CONCRETE SHEAR WALLS

WALL	2ND FLR	LOW ROOF	HIGH ROOF
A	10.3	5.2	24
B	2	2	0
C	2	2	0
D	20	40	24
E	8	0	24
F	0	2	24

ALLOWABLE DESIGN WIND FORCES (KIPS) FOR PRECAST CONCRETE SHEAR WALLS

WALL	2ND FLR	LOW ROOF	HIGH ROOF
A	2	4	12
B	7	3	0
C	2	2	0
D	15	13.6	22.5
E	2	2	12
F	0	2	22.5



**J18 PRECAST SHEAR WALL PLAN**

SCALE: NONE



ARCHITECT  
BAHR VERMEER HAECKER ARCHITECTS  
440 N 8TH ST STE 100  
LINCOLN, NE 68508  
V 402 475 5551  
F 402 475 0226  
bvh.com

CONSULTING ENGINEERS  
**R. O. YOUKER, INC.**  
1001 O STREET, SUITE 100  
LINCOLN, NE 68502  
V 402 475 7000  
F 402 475 7031  
www.royouker.com

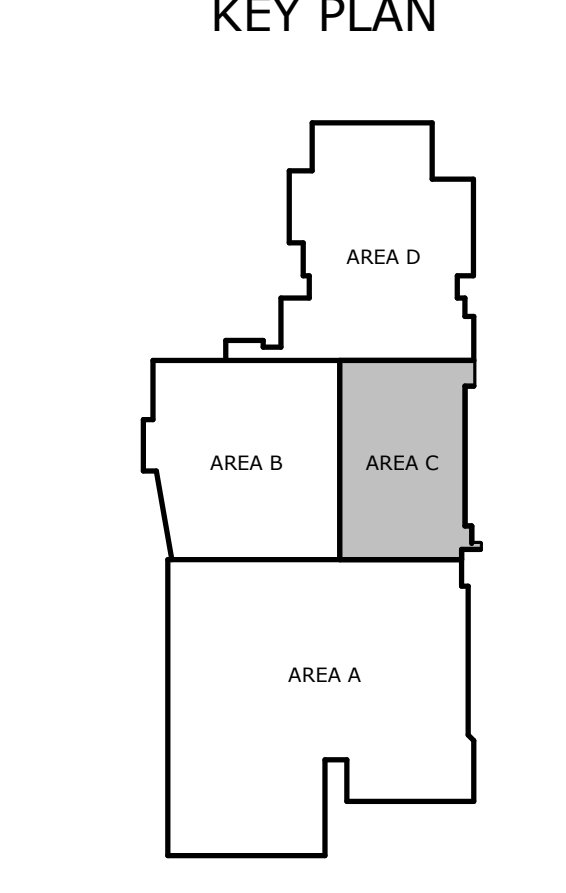
MEP ENGINEER  
ENGINEERING TECHNOLOGIES, INC.  
825 M STREET, SUITE 200  
LINCOLN, NE 68508  
V 402 476 1273  
F 402 476 1274  
www.eti-engineers.com

CIVIL ENGINEER  
REGA ENGINEERING GROUP  
1620 SOUTH 70TH ST, SUITE 103  
LINCOLN, NE 68506  
V 402 484 7342  
F 402 484 7344  
www.regaengineering.com

FOODSERVICE CONSULTANT  
ROGER KRUSE ASSOCIATES  
6818 GROVER STR, SUITE 101  
OMAHA, NE 68106  
V 402 955 2700  
F 402 955 2800

REVISIONS SCHEDULE

MARK	DATE	DESCRIPTION
1	12-6-2012	Addendum #4



**LEXINGTON MIDDLE SCHOOL AND COMMUNITY RECREATION FACILITY ADDITION**

PROJECT: L12022 DATE: 12-6-2012  
© COPYRIGHT BAH VERMEER HAECKER ARCHITECTS

FOR FOUNDATION PERMIT ONLY

**AREA C FOUNDATION PLAN**

**S1.0C-R BP.8**



ARCHITECT  
BAHR VERMEER HAECKER ARCHITECTS  
440 N 8TH ST STE 100  
LINCOLN NE 68508  
V 402 475 4551  
F 402 475 0226  
bvh.com

R. O. YOUKER, INC.  
CONSULTING ENGINEERS  
1001 O STREET, SUITE 110  
LINCOLN, NE 68508  
V 402 475 7331  
F 402 475 7331  
www.royouker.com  
08/1/2008

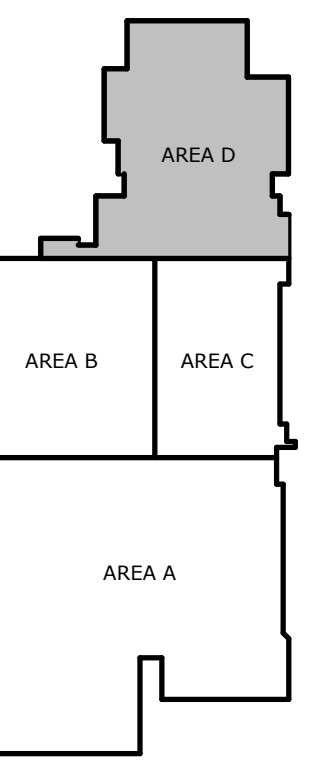
MEP ENGINEER  
ENGINEERING TECHNOLOGIES, INC  
825 M STREET, SUITE 200  
LINCOLN, NE 68508  
V 402 476 1273  
F 402 476 1274  
www.eti-engineers.com

CIVIL ENGINEER  
REGA ENGINEERING GROUP  
1620 SOUTH 76TH ST, SUITE 103  
LINCOLN, NE 68506  
V 402 484 7342  
F 402 484 7344  
www.regaengineering.com

FOODSERVICE CONSULTANT  
ROGER KRUSE ASSOCIATES  
6818 GROVER STR, SUITE 101  
OMAHA, NE 68106  
V 402 955 2700  
F 402 955 2800

REVISIONS SCHEDULE		
MARK	DATE	DESCRIPTION
1	12-6-2012	Addendum #4

KEY PLAN



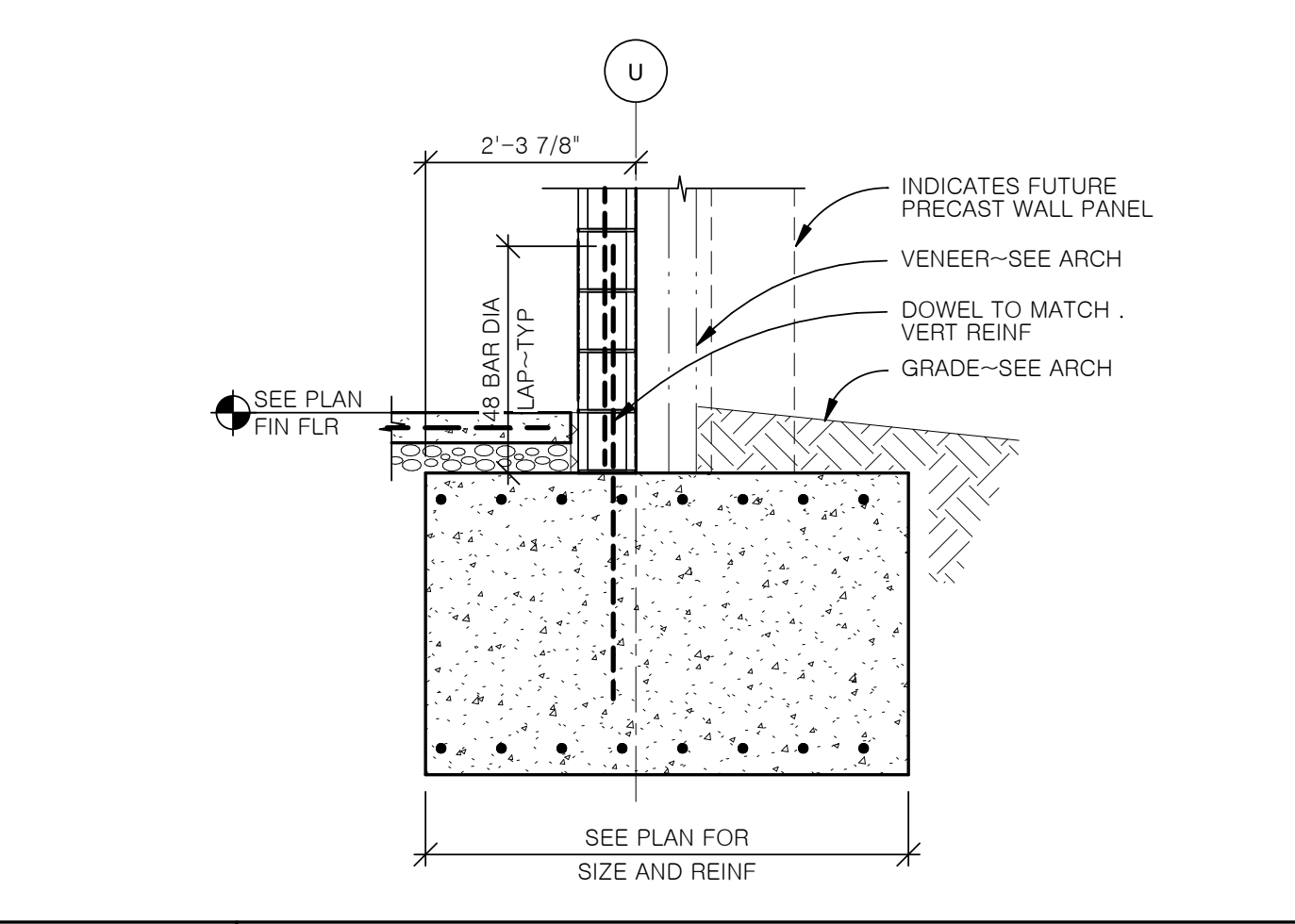
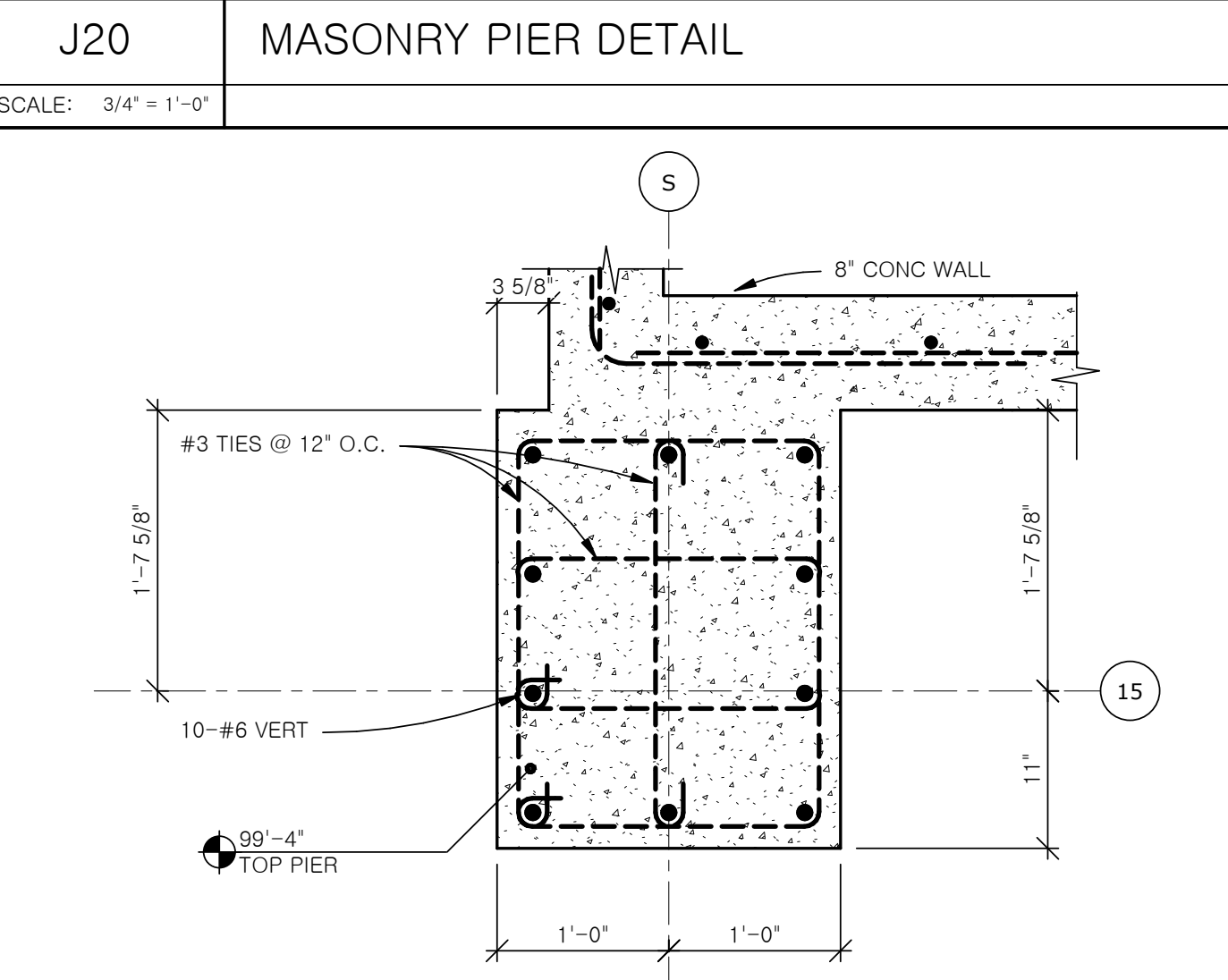
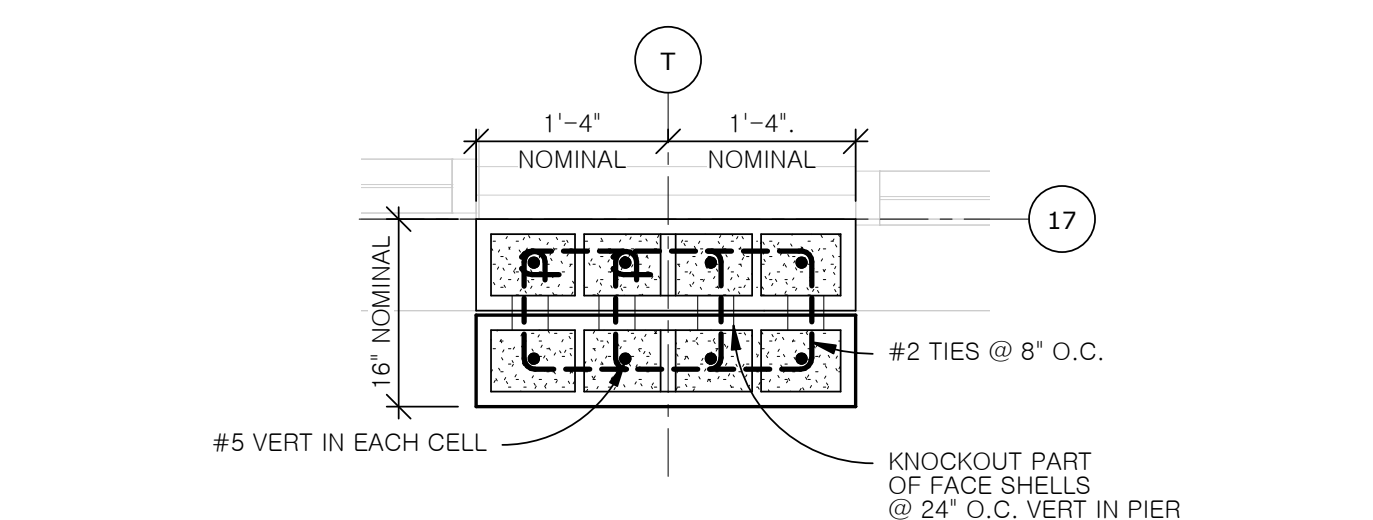
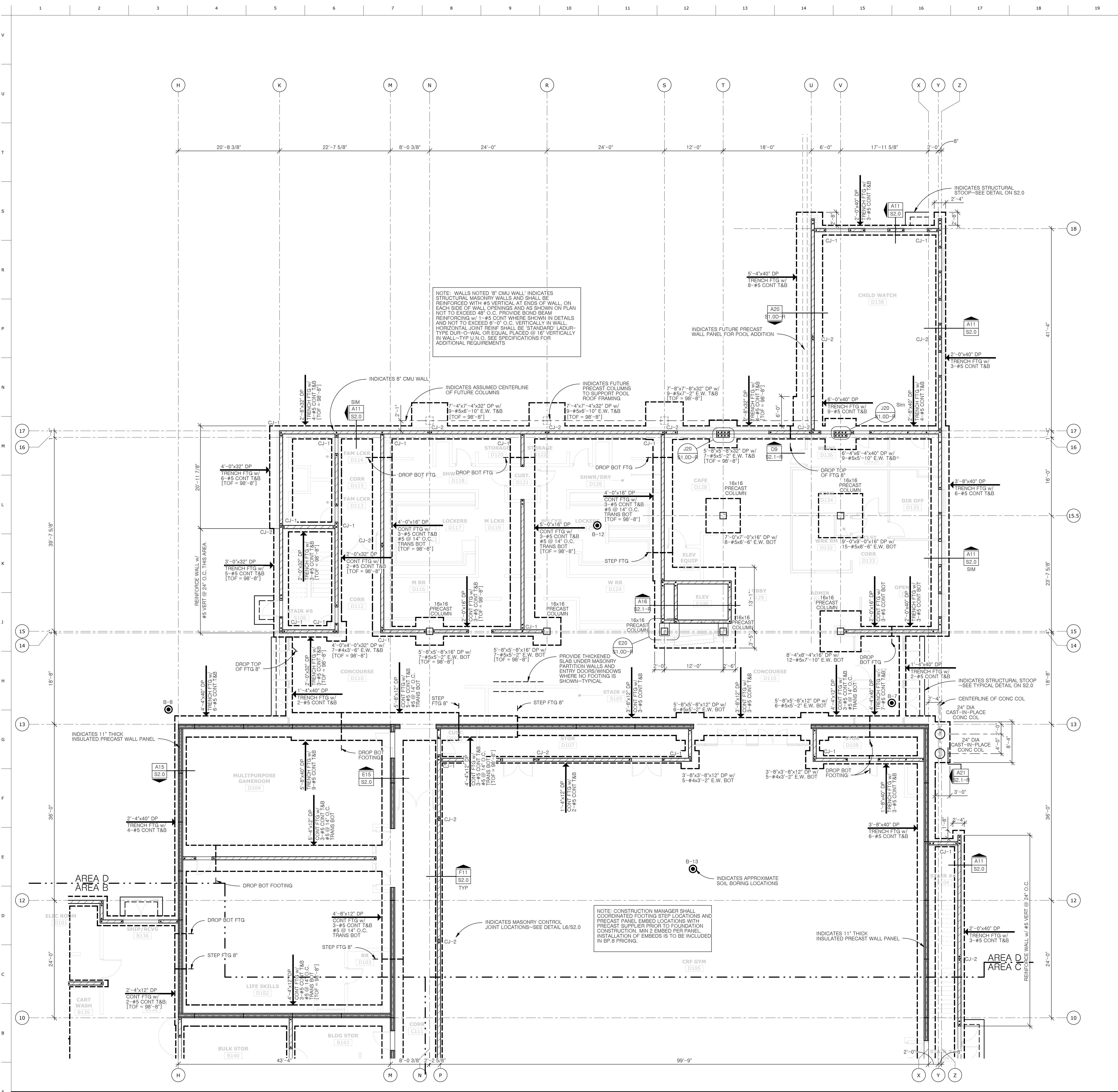
LEXINGTON MIDDLE SCHOOL AND COMMUNITY RECREATION FACILITY ADDITION

PROJECT: L12022 DATE: 12-6-2012  
© COPYRIGHT BAHV ARCHITECTS

FOR FOUNDATION PERMIT ONLY

AREA D FOUNDATION PLAN

NORTH  
S1.0D-R  
BP.8



A1	AREA D - FOUNDATION PLAN SCALE: 1/8" = 1'-0" TOP = 99'-4" UNLESS NOTED OTHERWISE THUS: [TOP = XXX'-XX"]
A20	TRENCH FOOTING DETAIL SCALE: 1/2" = 1'-0"



ARCHITECT  
BAHR VERMEER HAECKER ARCHITECTS  
440 N 8TH ST STE 100  
LINCOLN, NE 68508  
V 402 475 4551  
F 402 475 0226  
bvh.com

R. O. YOUKER, INC.  
CONSULTING ENGINEERS  
1001 O STREET, SUITE 100  
LINCOLN, NE 68508  
V 402 475 7631  
F 402 475 7631  
www.royouker.com

MEP ENGINEER  
ENGINEERING TECHNOLOGIES, INC  
825 M STREET, SUITE 200  
LINCOLN, NE 68508  
V 402 476 1273  
F 402 476 1274  
www.eti-engineers.com

CIVIL ENGINEER  
REGA ENGINEERING GROUP  
1620 SOUTH 76TH ST, SUITE 103  
LINCOLN, NE 68506  
V 402 484 7342  
F 402 484 7344  
www.regaengineering.com

FOODSERVICE CONSULTANT  
ROGER KRUSE ASSOCIATES  
6818 GROVER STR, SUITE 101  
OMAHA, NE 68106  
V 402 955 2800  
F 402 955 2800

REVISIONS SCHEDULE		
MARK	DATE	DESCRIPTION
1	12-6-2012	Addendum #4

LEXINGTON MIDDLE SCHOOL  
AND COMMUNITY RECREATION  
FACILITY ADDITION

PROJECT: L12022 DATE: 12-6-2012  
© COPYRIGHT B.V.H. ARCHITECTS

FOR FOUNDATION PERMIT ONLY

TYPICAL DETAILS

NORTH  
S2.1-R  
BP.8

### S1 ROOF MECH PENETRATION DETAIL

SCALE: 1/2" = 1'-0"

MECH SPRNGS GREATER THAN 12" SQUARE  
EA END TYPICAL 1/8"  
L2 1/2x2 1/2x1/4  
L3x2 1/2x1/4  
L5x5/16x0'-3  
3/16"  
4'-0" MAX  
5'-0" MAX  
JOIST OR BEAM  
PROVIDE L1x1/8 IF NOT LOCATED AT PANEL PT

### S9 PRECAST WALL SCHEMATIC WALL JOINTING DIAGRAM

SCALE: 3/4" = 1'-0"

VARIES TOP PANEL  
SEE PLAN BOT PANEL  
RIGID JOINT - TYPICAL  
SOFT JOINT IN WALL  
EQUAL - NOT TO EXCEED 50'-0"  
SEE PLAN FOR WALL LENGTH  
NOTE: FOR WALLS EXCEEDED 100'-0, PROVIDE EQUALLY SPACED SOFT JOINTS NOT TO EXCEED 50'-0" O.C.

### S16 TYPICAL BEAM OVER COLUMN DETAIL

SCALE: 1/2" = 1'-0"

BEAM SEE PLAN  
CL SPLICE  
PROVIDE SPLIT TUBE STIFF IF COL PRESENT ABOVE.  
(2)-1/4" STIFF PL. EA. SIDE WELD TO BM  
1/2" CLR  
MAX CONN PL NS & FS  
(2)- 5/8" dia BOLTS  
1/4" V 2  
1/2" CAP PL. WELD TO COL  
COL. SEE PLAN  
SEE PLAN  
1/2" CAP PLATE WIDTH AND LENGTH AS REQ  
1/4"  
1/2"  
SQ. CUT - TYP  
CONT. INDICATE BOLTED BM SPLICE LOCATION  
END

### S21 HOLLOWCORE HANGER DETAIL

SCALE: 3/4" = 1'-0"

GALV. STRAP HANGER INSTALLED BEFORE SLABS ARE GROUTED  
HOLLOWCORE  
HANGER  
TOGGLE BOLT  
SUSPENDED CEILING

### M1 BEAM BRG ON EXISTING CMU WALL

SCALE: 3/4" = 1'-0"

INDICATES EXISTING VENEER WHERE APPLICABLE  
NEW BEAM  
EXISTING WALL  
DRY PACK BTWN TOP BM AND BOT OPENING  
DRY PACK SOLID AROUND BEAM  
GROUT SOLID AFTER BEAM IS PLACED  
1 1/2" DRY PACK  
8" MIN  
6" x 1/2" BRG PL LENGTH=FLANGE WIDTH+6" w/ (2) 1/2" dia ANCHOR BOLTS  
6" MIN  
6" EMBED  
PROVIDE 8"x8" SOLID MAS @ BM BRG RELAY IF REQ'D  
8"  
6"  
BEAM BRG PARALLEL TO EXISTING WALL  
BEAM BRG PERPENDICULAR TO EXISTING WALL

### L9 STEEL LINTELS

SCALE: 3/4" = 1'-0"

OPENING IN 12" MAX WIDE WALL - 2'-0" MAX OPENING TYPE II LINTEL  
1. GRIND MORTAR FROM JOINT  
2. INSERT ANGLE INTO JOINT. MIN 8" BRG EACH SIDE OF OPENING - REPEAT EACH SIDE OF WALL  
3. REMOVE BRICK TO CREATE OPENING WELD PLATE AS SHOWN  
L4x4x1/4xCONT  
3/16"-2 @ 16"  
3/16"x2 @ 16"  
PL8x1/4xCONT  
W6x15  
OPENING IN 8" WIDE WALL - 6'-0" MAX OPENINGS U.N.O. TYPE II LINTEL  
1. REMOVE BRICK TO INSERT ONE BEAM. MIN 8" BRG EACH END  
2. REPEAT ON OTHER SIDE OF WALL  
3. REMOVE BRICK TO CREATE OPENING  
W6x15  
OPENING IN 12" TO 1'-2" WIDE WALL - 6'-0" MAX OPENINGS U.N.O. TYPE II LINTEL  
W6x15

NOTES:  
1. SEE LOOSE LINTEL SCHEDULE FOR NON-BEARING MASONRY WALLS.  
2. CONTRACTOR SHALL CONTACT ENGINEER FOR OPENINGS THROUGH WALLS THAT ARE DISCOVERED TO BE BEARING AND ARE NOT ADDRESSED BY THESE DETAILS OR NOTES.

### L16 JOIST REINFORCING DETAIL

SCALE: 3/4" = 1'-0"

POINT LOAD GREATER THAN 50#  
3/16" BOTH ENDS  
L 1 1/2x1 1/2x3/16  
JOIST - SEE PLAN  
POINT LOAD GREATER THAN 50#  
3/16" BOTH ENDS  
L 1 1/2x1 1/2x3/16  
JOIST - SEE PLAN

JOIST SUPPLIER SHALL DESIGN TOP & BOTTOM CHORDS TO SUPPORT A 50# LOAD AT ANY POINT ALONG JOIST

### K21 CMU PARTITION SUPPORT DTL

SCALE: 1/2" = 1'-0"

2-#10-3/4" HLT HI KWIK-PRO SELF DRILLING SCREWS OR APPROVED EQUAL AT EACH PLATE  
10-GAUGE PLATE. 6"x1'-4"(XCT REQUIRED AT HOLLOWCORE)  
NOTE: (PROVIDE 2-1/4"x2 1/4" SIMPSON TITEN SCREWS IN LIEU OF HLTI SCREWS AT HOLLOWCORE LOCATIONS)  
1" MIN CLR  
1/8"  
ROOF DECK OR HOLLOWCORE  
MASONRY PARTITION WALL  
L5x3x1/4x0'-6 @ 48" O.C.  
CONN TO DECK/HOLLOWCORE  
STL BM OR ROOF JOIST  
3/16"  
1" MIN CLR  
CONN TO BM OR JST  
L 1 1/2x1 1/4x3/16 @ 6'-0" O.C.  
L5x3x1/4x0'-6 @ 48" O.C.  
1/4x 4# x0'-6 @ 48" o.c.  
CONN AT UNSUPPORTED WALL  
L 1 1/2x1 1/4x3/16 @ 6'-0" O.C.--EACH SIDE STAGGERED  
L5x3x1/4x0'-6 @ 48" O.C.  
1/4x 4# x0'-6 @ 48" o.c.

### G5 PIPE SLEEVE THRU FTG DETAIL

SCALE: 3/4" = 1'-0"

COMPACTED GRAVEL FILL TO MATCH FOOTING WIDTH  
8" MIN TYP  
2'-0" MIN  
4" MIN  
10" dia MAX SLEEVE  
1'-0" MIN  
6" MIN  
2'-0" MIN  
2'-0" MIN  
DROP BOTTOM OF FOOTING AS REQUIRED TO MEET CLEARANCES  
NO PIPE SHALL PASS THROUGH THE FOUNDATION EXCEPT AT TRENCH FOOTING WITH DEPTH GREATER THAN 3'-0"

### L9 STEEL LINTELS

SCALE: 3/4" = 1'-0"

OPENING	SIZE	BRG.	RMK.
THRU 3'-4	3X3-1/2X1/4 L	4"	S.L.V.
3'-5 THRU 5'-4	4X3-1/2X1/4 L	6"	L.L.V.
5'-5 THRU 7'-4	6X3-1/2X5/16 L	6"	L.L.V.
7'-5 THRU 8'-4	WBX13 w/1/4 PL	8"	I

NOTES:  
1. SEE ARCHITECT FOR MASONRY OPENINGS. USE ONLY FOR NON-STRUCTURAL WALLS.  
2. PROVIDE ONE ANGLE FOR EACH 4' OF MASONRY WHERE NO BEAMS EXIST TO CARRY MASONRY.  
3. PROVIDE SOLID JAMB AT BEARING.  
4. FOR 10" WALLS ADD 1" TO ANGLE SIZES AND USE 2 ANGLES.  
5. PROVIDE ADDITIONAL 2" TO THE OUTSTANDING LEGS OF ALL EXTERIOR LINTELS PROVIDE BENT PLATES OF SIMILAR THICKNESS WHERE A STANDARD ANGLE SIZE DOES NOT EXIST.

### J16 TYPICAL DECK WELD PATTERN

SCALE: 1 1/2" = 1'-0"

36/7  
36/4  
NOTES: 1. PROVIDE 36/7 WELD PATTERN AT ALL EDGE BEAM CONDITIONS  
2. PROVIDE 36/4 WELD PATTERN AT ALL INTERMEDIATE SUPPORTS  
3. SLOPE FASTENERS: #10 TEK SCREW AT 24" o.c.

### H21 ROOF DECK INFILL DETAIL

SCALE: 3/4" = 1'-0"

EXISTING ROOF OPENING  
6" BUDDLE WELD @ 12" O.C.  
EXISTING JOIST  
1.58 20 GA GALV STEEL DECK

### D5 STAGE WALL DTL

SCALE: 1/2" = 1'-0"

102'-2 5/8" FIN FLR  
8" CMU WALL  
102'-4" T.O.W.  
101'-4 3/8" BOT BOND BM  
8" BOND BEAM w/ 1-#5 CONT-TYP  
100'-8" FIN FLR  
#5 VERT @ 48" O.C.  
SEE PLAN FOR SIZE AND REINF

### D9 TOP FTG STEP DETAIL

SCALE: 1/2" = 1'-0"

MATCH FTG REINF  
CONT FTG REINF  
1'-4" TYP  
8" STEP - TYP  
LONG BARS AT STEP TO MATCH TYP CONT FTG REINF  
TRANS REINF CONT THRU STEP IF REG FOR FTG  
48 BAR DIA LAP  
48 BAR DIA LAP  
SEE PLAN FOR FOOTING REINF

### E16 OPENINGS IN MASONRY WALL DTL

SCALE: 1/2" = 1'-0"

MECHANICAL PENETRATION AND WALL OPENINGS GREATER THAN 12"x12" OR 12" DIA  
WHERE PENETRATION OCCURS AT END OF WALL OR MASONRY CONTROL JOINT PROVIDE MIN 8" OF MASONRY AND BENT REINF AS SHOWN-TYP

### A21 TYP CAST IN PLACE CONC COL

SCALE: 1/2" = 1'-0"

24" dia COL  
#3 TIES @ 12" O.C.  
#7 VERT-TYP  
DOWELS TO MATCH COL VERT REINF-TYP  
ISOLATION JOINT - SEE ARCH  
FIN FLR  
99'-4" TOP OF WALL  
96'-0" BOT. FTG  
SEE PLAN FOR SIZE AND REINF

### A1 DEPRESSED SLAB DETAIL

SCALE: 1" = 1'-0"

#4 CONT AROUND PERIMETER OF DEPRESSED SLAB  
SLAB REINFORCING TO BE CONTINUOUS THRU SLAB STEP  
COOLER OR FREEZER  
SEE ARCH FIN FLR  
SEE ARCH COOLER SLAB  
6" MIN

### A9 KEY WALL DETAIL

SCALE: 3/4" = 1'-0"

48 BAR DIA LAP  
100'-0" FIN FL  
EPOXY DOWELS INTO WALLS MATCH HORIZONTAL REINF  
2-3/4" HORIZ KEY @ TRENCH FTG  
CONC WALL - SEE PLAN & DETAILS FOR REINF  
SOIL ENGINEER TO VERIFY FILL PRIOR TO PLACING TRENCH FOOTING  
SEE PLAN FOR REINF  
MATCH FOOTING REINF  
TRENCH FOOTING STEP

### A16 ELEVATOR PIT DETAIL

SCALE: 1/2" = 1'-0"

DOWELS TO MATCH CMU WALL VERT REINF  
2'-6" @ 16" O.C.  
8" CONC WALL-TYP  
SEE ARCH  
SEE ARCH  
2'-6" @ 16" O.C.  
2x4 CONT KEY  
#5 @ 16" HORIZ-TYP  
#5 DOWEL @ 16" o.c.  
2x4 CONT KEY-TYP  
96'-0" BOT. FTG  
#6 @ 8" O.C. E.W. T&B