
ADDENDUM NO. 2

PROJECT NAME: **UNL East Stadium
Athletic Performance Lab**

UNL PROJECT NUMBER: C049P139

CONSULTANT: DLR Group

ADDRESS: 1111 Lincoln Mall Suite 201
Lincoln, NE 68508

DATE OF ISSUANCE: November 30, 2012
DATE OF BID OPENING: **Thursday, December 6, 2012**

The bid documents dated November 7, 2012 for the above referenced project are amended by this addendum.

NOTICE: This Addendum is issued to all interested prospective bidders as an amendment to the project manual or other parts of the bidding (contract) documents for the above named project. Reference to this Addendum must be included in the Bid proposal. The information contained herein shall be fully incorporated into the contract documents as though originally included therein.

GENERAL INFORMATION:

ITEM 1: DATE OF BID OPENING

1. Revise "Date of Bid Opening" to Thursday, December 6, 2012, 2:00 PM CT.

ITEM 2: PRE-BID MEETING

1. Add the attached meeting notes and sign in sheet for general information only.
2. Attendance at the pre-bid meeting was not mandatory.

MODIFICATIONS TO THE PROJECT MANUAL:

ITEM 1: SECTION 001116 – INVITATION TO BID

1. Revise paragraph 2.0 as follows:

"2.0 TIME AND PLACE FOR RECEIPT OF BIDS

- A. Sealed Bid Proposals will be received and publicly opened and read aloud as follows:

**Closing Date and Time for Receipt of Bids: Thursday, December 6, 2012
2:00 PM CT"**

ADDENDUM NO. 2

Project Name: UNL East Stadium Athletic Performance Lab

Project Number: C049P139

2 of 13

ITEM 2: SECTION 002113- INSTRUCTION TO BIDDERS

1. Add the following to paragraph 22 Owner's Desired Schedule:

"The East Stadium Improvements Project current CM schedule indicated the below dates:

12/06/2012- 12/19/2012	Remove tower cranes
12/20/2012- 1/11/2013	Infill slab where tower cranes are currently located.
10/29/2012- 2/01/2013	Install elevators 9 & 10 (north-most elevators)
11/21/2012- 1/11/2013	Glazing installed at shell space windows

These dates are approximate and are subject to change. The Athletic Performance Lab schedule shall be coordinated with the East Stadium Improvements Project schedule."

ITEM 3: TABLE OF CONTENTS

- A. Division 08 - Openings, add the following new Section:

- A. Add the following:

"Section 08 81 13 Decorative Glass Glazing"

- B. Division 09 – Finishes

- A. Delete 09 30 33 Stone Tiling.

ITEM 4: SECTION 064023 INTERIOR ARCHITECTURAL WOODWORK

- A. Subparagraph 2.2.D.1, delete "7.007" and substitute "6.000".
- B. Subparagraph 2.2.G.4. Delete the words "20 inches (500 mm) high and 16 inches (400 mm) wide" and substitute with "28 inches (700 mm) high and 18 inches (450 mm) wide".
- C. Paragraph 2.5.C. Delete "3" x 1/4" and substitute with "4" x 5/8."

ITEM 5: SECTION 078100 APPLIED FIREPROOFING

- A. Paragraph 1.6. Add the following:

"B. Preconstruction Testing Service: Engage a qualified testing agency to perform preconstruction testing on fireproofing.

1. Preconstruction Adhesion and Compatibility Testing: Test for compliance with requirements for specified performance and test methods.
 - a. Bond Strength: Test for cohesive and adhesive strength according to ASTM E 736. Provide bond strength indicated in referenced fire-resistance design, but not less than minimum specified in Part 2.
 - b. Density: Test for density according to ASTM E 605. Provide density indicated in referenced fire-resistance design, but not less than minimum specified in Part 2.
 - c. Verify that manufacturer, through its own laboratory testing or field experience, attests that primers or coatings are compatible with fireproofing.
 - d. Schedule sufficient time for testing and analyzing results to prevent delaying the Work.

ADDENDUM NO. 2

Project Name: UNL East Stadium Athletic Performance Lab

Project Number: C049P139

3 of 13

- e. For materials failing tests, obtain applied-fireproofing manufacturer's written instructions for corrective measures including the use of specially formulated bonding agents or primers."

ITEM 6: DIVISION 08 OPENINGS

- A. Add new Section 088113 Decorative Glass Glazing shown as Attachment No. 2.

ITEM 7: SECTION 081113 HOLLOW METAL DOORS AND FRAMES

- A. Paragraph 2.2.B. Delete this Paragraph in its entirety.

ITEM 8: SECTION 081416 FLUSH WOOD DOORS

- A. Paragraph 2.4.A. Delete this Paragraph in its entirety.

ITEM 9: SECTION 083113 ACCESS DOORS AND FRAMES

- A. Subparagraph 2.2.B.2. Delete Subparagraph in its entirety and substitute the following:

"2. Size: As indicated on the Drawings."

- B. Paragraph 2.2.B. Add the following:

"7. Options: Add the following options to access doors to the mechanical maintenance platforms.

- a. Insulated Doors: Manufacturers standard 2-inch thick fiberglass insulation.
- b. Gasketing: Provide UL listed smoke seal to reduce air flow and smoke between the panel and frame.
- c. Door and Frame: Metallic-coated steel sheet."

ITEM 10: SECTION 084113 ALUMINUM-FRAMED ENTRANCES AND STOREFRONTS

- A. Subparagraph 1.9.A.1.e. Delete this Subparagraph in its entirety.
- B. Paragraph 2.1.A. Add the following, "5. Manko Window Systems, Inc."
- C. Subparagraph 2.3.A.1. Delete this Subparagraph in its entirety and substitute the following:
"1. Construction: Provide thermally broken frames."

ITEM 11: SECTION 084126 ALL-GLASS ENTRANCES AND STOREFRONTS

- A. Subparagraph 2.5.B.1.b. At the end of Subparagraph add, "(Double Acting Pair of Doors)".

ADDENDUM NO. 2

Project Name: UNL East Stadium Athletic Performance Lab

Project Number: C049P139

4 of 13

ITEM 12: SECTION 087100 DOOR HARDWARE

A. Paragraph 1.2.C. Add the following:

“5. Division 08 Section “All Glass Entrances and Storefronts” for hardware provided by all glass entrance and storefront manufacturers.”

B. Paragraph 2.1.B - Add note below paragraph “**Provide Sargent 480 Series device w/ RX option as approved alternate. Provide Sargent 8200 series (8271) mortise lock w/ RX option as approved alternate.”

C. Subparagraph 2.1.B.3. Delete “No Substitutions, substitute “Sargent”

D. Paragraph 3.3.A., Delete in its entirety.”

E. Paragraph 3.3.B:

1. Hardware Set No. 3, delete “2 EACH HINGE BY DOOR SUPPLIER” and substitute with “2 EACH PIVOTS X 180 DEGREES BY DOOR SUPPLIER”.
2. Hardware Set No. 4, delete “Door #202” and substitute with “Door #202A”.
3. Hardware Set No. 5, delete “Door #202A” and substitute with “Door #202”.

ITEM 13: SECTION 092900 GYPSUM BOARD

A. Article 2.5. Add the following paragraph:

“B. Trim Reveals:

1. Manufacturer: Pittcon Softforms LLC.
2. Series: STR-050-063.
3. Finish: Primed for painting.”

B. Paragraph 3.5.C. Add the following subparagraph:

“6. Trim Reveals: At locations shown on the Drawings.”

ITEM 14: SECTION 095113 ACOUSTICAL PANEL CEILINGS

A. Paragraph 1.2.B., add the following:

1. Section 064023 Interior Architectural Woodwork for panelized linear wood panels.

B. Paragraph 1.6.A., delete in its entirety “3.”

C. Paragraph 1.6.A., delete in its entirety “4.”

D. Subparagraph 2.3.B.1., delete in its entirety “2.”

E. Subparagraph 2.3.B.J., delete in its entirety and substitute the following:
“ J. Grid Thickness: 15/16”.

F. Subparagraph 2.3.B. Add the following:

ADDENDUM NO. 2

Project Name: UNL East Stadium Athletic Performance Lab

Project Number: C049P139

5 of 13

“L. Location: All spaces except RESEARCH LAB 202 AND WORK ROOM 200 where APC is shown on the drawings.”

G. Subparagraph 2.4.J., delete in its entirety and substitute the following:

“ J. Grid Thickness: 15/16”.

H. Subparagraph 2.4.B. Add the following:

“L. Location: RESEARCH LAB 202 AND WORK ROOM 200.”

I. Paragraph 2.5. Metal Suspension Systems, General. Delete in its entirety and substitute the following:

“2.5. Metal Suspension Systems, General

A. Wide-Face, Capped, Double-Web, Stainless-Steel Suspension System: Main and cross runners roll formed from Type 304 or 316, stainless-steel sheet, with prefinished 15/16-inch- (24-mm-) wide stainless-steel caps on flanges.

1. Structural Classification: Intermediate-duty system.
2. Face Design: Flat, flush.”

J. Paragraph 2.5.F. Delete in its entirety.

K. Paragraph 2.5.G. Delete in its entirety.

L. Paragraph 2.5.H. Delete in its entirety.

M. Paragraph 2.5.I. Delete in its entirety.

N. Paragraph 2.5.J. Delete in its entirety.

ITEM 15: SECTION 096566 RESILIENT ATHLETIC FLOORING

A. Subparagraph 2.5.A.3. Add the following subparagraph:

“j. Football Yard Markers: Inlaid with the same material as field turf. Color to be selected by Architect from manufacturers full range of colors.”

ITEM 16: SECTION 102113 TOILET COMPARTMENTS

A. Paragraph 2.4.B. Delete Paragraph in its entirety.

B. Subparagraph 3.1.A.2. Delete Subparagraph in its entirety.

ITEM 17: SECTION 116623 GYMNASIUM EQUIPMENT

A. Subparagraph 1.2.B.2. Delete Subparagraph in its entirety.

B. Paragraph 2.2.A. After the words “Schelde North America” add the words “Competitor Model BA 42XL, Rim Model BA35”.

C. Paragraph 2.4.D. Delete the words “and WP-4”.

D. Subparagraph 2.4.D.2.d. Delete Subparagraph in its entirety.

ADDENDUM NO. 2

Project Name: UNL East Stadium Athletic Performance Lab

Project Number: C049P139

6 of 13

- E. Subparagraph 2.4.D.3. Delete “72 inches (1800 mm)” and substitute with “96 inches (2400 mm)”.
- F. Subparagraph 2.4.D.6. Delete Subparagraph in its entirety and substitute with the following:
 - “6. Fabric Covering Color(s) for WP-1, WP-2 and WP-3: Match UNL colors for red and white.
 - a. Red color to match Carolina Vinyl Fabric, American Beauty.”
- G. Paragraph 2.4.F. Add the following
 - “2. Field verify switches, receptacles, wall grilles and other obstructions and provide cutouts accordingly at all wall padding locations”
- H. Article 2.4. Add the following Paragraph:
 - “G. Wall Safety Pad WP-4:
 - 1. Manufacturer: Tarkett Sports.
 - 2. Product: Dropzone Speckle.
 - 3. Color: Ember.
 - 4. Size: 1/2 inch thick x 48 inch wide roll.
 - 5. Substrate: 1/2 inch thick plywood wood substrate provided and installed by wall pad manufacturer.
 - 6. Location: WP-4 to cover entire wall, as shown on the Drawings.”
 - 7. Adhesive: As recommended by manufacturer.
- I. Paragraph 3.2.E. Delete Paragraph in its entirety and substitute with the following:
 - “E. Wall Safety Pads:
 - 1. WP-1, WP-2 and WP-3:
 - a. Mount with bottom edge at finished floor.
 - b. Provide removable wall safety pads at wall access panels to mechanical maintenance platforms. See Drawings for locations.
 - 2. WP-4:
 - a. Cover entire wall surface at locations shown on the Drawings.
 - b. Sand entire substrate surface and fill panel joints with sealant to provide a smooth dust free surface prior to installation.
 - c. Install finish material in strict accordance with the manufacturer’s written instructions.
 - d. Install finish material minimizing cross seams. Provide a seam diagram during the submittal process for approval prior to installation.”
- J. Paragraph 3.2.H. Delete Paragraph in its entirety.

ITEM 18: SECTION 116833 BASEBALL EQUIPMENT AND SPECIALTIES

- A. Subparagraph 2.2.C.1. Delete “CN-1” and substitute with “CN-2”.
- B. Subparagraph 2.2.C.2. Delete “CN-2” and substitute with “CN-1”.

ADDENDUM NO. 2

Project Name: UNL East Stadium Athletic Performance Lab

Project Number: C049P139

7 of 13

ITEM 19: SECTION 123661 SIMULATED STONE COUNTERTOPS

A. Subparagraph 1.2.A., add the following:

“2. Window Sills”.

B. Subparagraph 1.2.B.1., delete in its entirety and substitute the following:

“1. Section 22400 Plumbing Fixtures for nonintegral sinks, and plumbing fittings.”

C. Subparagraph 2.2.D.2.b., Delete in its entirety and substitute the following:

“b. SS-2
Manufacturer: Corian
Color: White.”

D. Subparagraph 2.2.D.2., Add the following:

“b. SS-3
Manufacturer: Dupont Zodiaq
Color: Indus Red.”

ITEM 20: SECTION 232113 HYDRONIC PIPING

A. Subparagraph 2.3.C.1. Add the following:

“d. Pro Hydronic Specialties.”

ITEM 21: SECTION 233113 METALLIC AND FABRIC DUCTS

A. Subparagraph 2.3.A.1. Add the following:

f. Norlock
g. Spiral Pipe of Texas - Spiral Ductwork & Fittings
h. SET Duct Manufacturing, Inc.
i. LaPine Metal Products
j. Eastern Sheet Metal”

B. Paragraph 2.7.E. Add the following paragraph 2.7.E.4

“4. Air Distribution Concepts.”

ITEM 22: SECTION 233300 AIR DUCT ACCESSORIES

A. Paragraph 2.2.E. – Add the following:

“1. United Enertech is an approved alternative manufacturer of medium duty backdraft dampers.
2. Pottorff is an approved alternative manufacturer of medium duty backdraft dampers.
3. Ruskin is an approved alternative manufacturer of medium duty backdraft dampers.
4. Greenheck is an approved alternative manufacturer of medium duty backdraft dampers.
5. NCA Manufacturing, Inc. is an approved alternative manufacturer of medium duty backdraft dampers.”

B. Subparagraph 2.3.C.4. Add the following:

- “a. United Enertech is an approved alternative manufacturer of rectangular manual volume dampers.
- b. Pottorff is an approved alternative manufacturer of rectangular manual volume dampers.
- c. Ruskin is an approved alternative manufacturer of rectangular manual volume dampers.
- d. Greenheck is an approved alternative manufacturer of rectangular manual volume dampers.
- e. NCA Manufacturing, Inc. is an approved alternative manufacturer of rectangular manual volume dampers.”

C. Subparagraph 2.3.D.4. Add the following:

- “a. United Enertech is an approved alternative manufacturer of rectangular manual volume dampers.
- b. Pottorff is an approved alternative manufacturer of rectangular manual volume dampers.
- c. Ruskin is an approved alternative manufacturer of rectangular manual volume dampers.
- d. Greenheck is an approved alternative manufacturer of rectangular manual volume dampers.
- e. NCA Manufacturing, Inc. is an approved alternative manufacturer of rectangular manual volume dampers.”

D. Subparagraph 2.3.E.4. Add the following:

- “a. United Enertech is an approved alternative manufacturer of rectangular manual volume dampers.
- b. Pottorff is an approved alternative manufacturer of rectangular manual volume dampers.
- c. Ruskin is an approved alternative manufacturer of rectangular manual volume dampers.
- d. Greenheck is an approved alternative manufacturer of rectangular manual volume dampers.
- e. NCA Manufacturing, Inc. is an approved alternative manufacturer of rectangular manual volume dampers.”

E. Subparagraph 2.5.a. Add the following:

- “9. United Enertech is an approved alternative manufacturer of dynamic curtain type fire damper.
- 10. Pottorff is an approved alternative manufacturer of dynamic curtain type fire damper.
- 11. Ruskin is an approved alternative manufacturer of dynamic curtain type fire damper.
- 12. Greenheck is an approved alternative manufacturer of dynamic curtain type fire damper.
- 13. Leader Industries is an approved alternative manufacturer of dynamic curtain type fire damper.
- 14. NCA Manufacturing, Inc. is an approved alternative manufacturer of dynamic curtain type fire damper.”

F. Paragraph 2.6.M. Add the following:

- “1. United Enertech is an approved alternative manufacturer of smoke dampers.
- 2. Pottorff is an approved alternative manufacturer of smoke dampers.
- 3. Ruskin is an approved alternative manufacturer of smoke dampers.
- 4. Greenheck is an approved alternative manufacturer of smoke dampers.
- 5. Leader Industries is an approved alternative manufacturer of smoke dampers.
- 6. NCA Manufacturing, Inc. is an approved alternative manufacturer of smoke dampers.”

G. Paragraph 2.7.N. Add the following:

ADDENDUM NO. 2

Project Name: UNL East Stadium Athletic Performance Lab

Project Number: C049P139

9 of 13

- “1. United Enertech is an approved alternative manufacturer of combination fire and smoke dampers.
2. Pottorff is an approved alternative manufacturer of combination fire and smoke dampers.
3. Ruskin is an approved alternative manufacturer of combination fire and smoke dampers.
4. Greenheck is an approved alternative manufacturer of combination fire and smoke dampers.
5. Leader Industries is an approved alternative manufacturer of combination fire and smoke dampers.
6. NCA Manufacturing, Inc. is an approved alternative manufacturer of combination fire and smoke dampers.”

ITEM 23: SECTION 233423 HVAC POWER VENTILATORS

- A. Paragraph 2.1.B. Add the following:

- “13. Acme is an approved alternative manufacturer of ceiling-mounting ventilators.
14. Twin City Fans is an approved alternative manufacturer of ceiling-mounting ventilators.”

ITEM 24: SECTION 233600 AIR TERMINAL UNITS

- A. Paragraph 2.1.A. Add the following:

- "5. MetalAire
6. Tuttle & Bailey"

ITEM 25: SECTION 233713 DIFFUSERS, REGISTERS, GRILLES

- A. Paragraph 2.1.1. Add the following:

- "g. MetalAire
h. Tuttle & Bailey"

ITEM 26: SECTION 237313 INDOOR CENTRAL-STATION AIR-HANDLING UNITS

- A. Paragraph 2.1.A. Add the following:

- “5. Alliance Air
6. Air Enterprises
7. TMI”

MODIFICATIONS TO THE DRAWINGS

ITEM 1: CP1.1. Code Plan

- A. Wall Separation Legend – Note A. Delete the words “or smoke-separation requirements”

ITEM 2: DRAWING A.1 Architectural Floor Plan – Lower Level – Area C

- A. A1.1 - Delete WALL PADDING SCHEDULE from lower right portion of sheet.

ADDENDUM NO. 2

Project Name: UNL East Stadium Athletic Performance Lab

Project Number: C049P139

10 of 13

- B. A1.1 – FLOOR PLAN KEYNOTES – KEYNOTE 9 – Delete the words, “TAPING/FINISH/PAINTING TO BE PROVIDED AS PART OF SEPARATE CONTRACT @ MECHANICAL LEVEL.” and substitute, “TAPING/MUD/FINISH TO BE PROVIDED AS PART OF THIS CONTRACT. PAINTING TO BE PROVIDED AS PART OF ESIP PROJECT.

ITEM 3: DRAWING A1.2 – Architectural Floor Plan – Upper Level – Area C

- A. FLOOR PLAN KEYNOTES - KEYNOTE 9 – Delete the words, “TAPING/FINISH/PAINTING TO BE PROVIDED AS PART OF SEPARATE CONTRACT @ MECHANICAL LEVEL.” and substitute, “TAPING/MUD/FINISH TO BE PROVIDED AS PART OF THIS CONTRACT. PAINTING TO BE PROVIDED AS PART OF ESIP PROJECT.

ITEM 4: DRAWING A2.1 Large Scale Plans

- A. 13/A2.1 – Modify drawing per Attachment A-1
- B. 33/A2.1 – Delete note, “...INTO REAR OF UPPER CABINET” and substitute, “COORDINATE FINAL LOCATION WITH OWNER”
- C. A2.1 – Modify “ABBREVIATIONS” per Attachment A-2
- E. 21/A2.1 – Delete note, “ACCESS PANEL” and substitute, “2’-0”X2’-0” ACCESS PANEL”

ITEM 5: DRAWING A3.1 Reflected Ceiling Plan – Lower Level – Area C

- A. A3.1 – REFLECTED CEILING PLAN – LOWER LEVEL – AREA C - Modify drawing per Attachment A-3
- B. A3.1 – REFLECTED CEILING PLAN – UPPER LEVEL – AREA C - Modify drawing per Attachment A-4

ITEM 6: DRAWING A7.1 Wall Sections

- A. 51/A7.1 – delete “AIR BARRIER”
- B. 46/A7.1 – Delete note, “2-HR FIRE-RATED WALL ASSEMBLY, SEE FLOOR PLANS FOR WALL TYPE”
 - Delete note, “OPERATED ROLLING FIRE SHUTTER”
- C. 55/A7.1 – Delete note, “1/2” TH. CLEAR TEMPERED GLASS” and substitute, “CTIG-1”
Delete note, “TRACK AT ROLLING FIRE SHUTTER BEYOND”

ITEM 7: Drawing A9.1 Door Schedule and Details

- A. A9.1 – Door 217 - change DOOR TYPE from “D” to “B”
- B. 32/A9.1 – Delete note, “6’ RUBBER CORNER GUARDS” and substitute, “CORNER GUARDS”

ADDENDUM NO. 2

Project Name: UNL East Stadium Athletic Performance Lab

Project Number: C049P139

11 of 13

- C. 24/9.1 – Delete, "...STR-050-050..." and substitute, "...STR-050-063..."
- D. 26/9.1 – Delete, "...STR-050-050..." and substitute, "...STR-050-063..."
- E. 33/9.1 – Delete, "...STR-050-050..." and substitute, "...STR-050-063..."
- F. 35/9.1 – Delete, "...STR-050-050..." and substitute, "...STR-050-063..."
- G. 36/9.1 – Delete, "...STR-050-050..." and substitute, "...STR-050-063..."
- H. 46/9.1 – Delete, "...STR-050-050..." and substitute, "...STR-050-063..."

ITEM 8: DRAWING A9.2 Window Schedule and Details

- A. 34/A9.2 – Add "SS-2" after note, "SOLID SURFACE SILL"
- B. A9.2 – Window Frame Elevations – on window type "L" replace "CG" with "CTG" (3 locations)

ITEM 9: DRAWING A9.3 Window and Door Details

- A. 44/9.3 – Delete, "...STR-050-050..." and substitute, "...STR-050-063..."
- B. 46/9.3 – Delete, "...STR-050-050..." and substitute, "...STR-050-063..."
- C. 14/A9.3 – Delete note, "1/2" CLEAR TEMPERED GLASS" and replace with "CTIG-1"
- C. 24/A9.3 – Delete note, "8" x 8" 5/16" STEEL ANGLE, PAINTED TO MATCH ADJACENT WALLS" and replace with, "8X8X5/16 TUBE"

ITEM 10: DRAWING A10.1 General Building Details

- A. 13/A10.1 – At sub-detail "A" Delete "12B" and substitute "13B"
- B. 15/A10.1 – Revise detail per Attachment A-5
- C. 34/A10.1 – Add detail per Attachment A-6

ITEM 11: DRAWING A10.2 General Building Details

- A. 45/A10.2 – Delete note "7' HIGH WALL PADDING" and substitute, "8' HIGH WALL PADDING"

ITEM 12: DRAWING A11.1 Casework/Millwork Elevations

- A. 53/A11.1 – Add note, "G03M342236 (ADA)" with leader pointing to sink location.

ADDENDUM NO. 2

Project Name: UNL East Stadium Athletic Performance Lab

Project Number: C049P139

12 of 13

- B. 51/A11.1 – Delete note, “9” TOP SHELF: FE28R040929-10” and substitute, “9” TOP SHELF: FE28M040929-10”
- C. 51/A11.1 - Delete note, “12” LOWER SHELVES: FE22M040929-30” and substitute, “12” LOWER SHELVES: FE22R040929-30
- D. Casework/Millwork Elevations, Elevation 31, Delete VWC-1 from elevation.

ITEM 13: DRAWING A11.2 Hitting Cage Details

- A. 32/A11.2 – Delete note, “3” BOTTOM BEAM PADDING” and substitute, “WP-3”
- B. 42/A11.2 – Delete note, “3” BOTTOM BEAM PADDING” and substitute, “WP-3”

ITEM 14: DRAWING M1.1 HVAC Plan – Lower Level – Area C

- A. ROOM 105: Delete volume dampers in return ducts at FTU-3 and FTU-4.
- C. Modify drawings as shown on Attachment M1 to Addendum No. CC-2 dated November 29, 2012.

ITEM 15: DRAWING M1.2 HVAC Plan – Upper Level – Area C

- A. Modify drawings as shown on Attachment M2 to Addendum No. CC-2 dated November 29, 2012.

ITEM 16: DRAWING M5.1 Mechanical Schedules

- A. Modify drawings as shown on Attachment M3 to Addendum No. CC-2 dated November 29, 2012.
- B. REFER TO DIFFUSER, REGISTER & GRILLE SCHEDULE FOR DIFFUSER D-4, DELETE FLAT BLACK FINISH AND REPLACE WITH ANODIZED ALUMINUM FINISH.
- C. FOR DIFFUSER D-5, DELETE FLAT BLACK FINISH AND REPLACE WITH ANODIZED ALUMINUM FINISH.

ITEM 17: DRAWING P1.1 Plumbing Plan – Lower Level – Area C

- A. Add general note 6 as shown below:
 - 6. LABEL ALL HOT AND COLD VALVES THAT ARE UPSTREAM OF THE EMERGENCY EQUIPMENT TO READ "WARNING THIS VALVE SERVES AN EMERGENCY EYE, FACE WASH / SHOWER FIXTURE LOCATED IN THE RESEARCH LAB. DO NOT CLOSE THIS VALVE UNLESS LAB PERSONNEL HAS BEEN NOTIFIED. CLOSING THIS VALVE WILL MAKE THE EMERGENCY EYE, FACE WASH / SHOWER FIXTURES LOCATED WITHIN THE LAB INOPERABLE."

ADDENDUM NO. 2

Project Name: UNL East Stadium Athletic Performance Lab

Project Number: C049P139

13 of 13

- B. Modify drawings as shown on Attachment P1 to Addendum No. CC-2 dated November 29, 2012.
- B. Modify drawings as shown on Attachment P2 to Addendum No. CC-2 dated November 29, 2012.

ITEM 18: DRAWING P1.2 Plumbing Plan – Upper Level – Area C

- A. Add general note 6 as shown below:

6. LABEL ALL HOT AND COLD VALVES THAT ARE UPSTREAM OF THE EMERGENCY EQUIPMENT TO READ "WARNING THIS VALVE SERVES AN EMERGENCY EYE, FACE WASH / SHOWER FIXTURE LOCATED IN THE RESEARCH LAB. DO NOT CLOSE THIS VALVE UNLESS LAB PERSONNEL HAS BEEN NOTIFIED. CLOSING THIS VALVE WILL MAKE THE EMERGENCY EYE, FACE WASH / SHOWER FIXTURES LOCATED WITHIN THE LAB INOPERABLE."

- B. Add keyed note 8 as shown below:

8. PROVIDE 1/2-INCH HOT AND COLD WATER CONNECTION TO THERMOSTATIC MIXING VALVE TMV-3 LOCATED IN THE CABINET BELOW COUNTERSINK CS-3. EXTEND 1/2-INCH TEMPERED WATER PIPING FROM TMV-3 TO EEW-1 (COUNTER MOUNTED EMERGENCY EYE / FACE WASH STATION).

ITEM 19: DRAWING P2.1 Plumbing Large Scale Plans & Riser Diagrams

- A. Modify drawings as shown on Attachment P3 to Addendum No. CC-2 dated November 29, 2012.
- B. Modify drawings as shown on Attachment P4 to Addendum No. CC-2 dated November 29, 2012.

ITEM 20: DRAWING E3.2 Special Systems Plan – Upper Level – Area C

- A. Research Lab 202 add Keyed Note 5 to Card Reader
- B. Lab Corridor 204 add Keyed Note 5 to Card Reader
- C. Research Lab 202 Door add Keyed Note 5 to Card Reader
- D. Research Lab 202 High Density Storage add Keyed Note 5 to Card Reader
- E. Add Key Note 5 "Provide HID R10 Reader 6100 Mullion Smart Card Reader or Approved Equal".

ITEM 21: DRAWING E7.1 Electrical Schedules

- A. Luminaire Schedule: Delete fixture X1, Lithonia Model EDG in its entirety.

END OF ADDENDUM NO. 2

Pre-bid meeting notes, 11/20/2012:

1. Introductions were made and the meeting attendance sheet was distributed. The meeting agenda was distributed.
 - a. Attendance to the pre-bid meeting was not mandatory.
2. Reviewed the procurement and contracting requirements:
 - a. The project was advertised on 11/11, 11/14 and 11/18/2012.
 - b. The Instructions to Bidders section was reviewed briefly.
 - 1) Bidder Qualifications. AIA A305, Contractor qualifications add to section 15.0. The future addendum will require the bidder qualifications form be included with the bid.
 - 2) Bonding requirements were discussed. Bond in the amount of 100% of the contract amount will be required.
 - 3) Work incorporated into the project will be exempt from sales tax. Work not incorporated in the project is subject to sales tax.
 - 4) Insurance limits will be as noted in the manual.
 - 5) Bid Security in the amount of 5% of bid is required. The bidder are encouraged to read the bid documents for details.
 - 6) Bid Form and Attachments were review, See the project manual. Bids must be delivered to UNL Procurement services at 1700 Y street. The bids will NOT be accepted anywhere else. Bids are due at 2:00 PM on Tuesday December 4, 2012. See Invitation to Bid.
 - 7) Bid Submittal Requirements are per Instruction to Bidders sections 8.0 & post bid submittal requirements are per Instructions to Bidders section 15.0.
 - 8) Notice of Award will be per Instructions to Bidders section 14.0. It is the Owner's intent to award the contract to the lowest responsible bidder, if the bid is under budget.
 - 9) Bid protest period is 7 calendar days per Instructions to bidders section 12.0.
3. Communication during Bidding Period was discussed:
 - a. Documents may be obtained through A&D technical
 - b. Access to Project Web site is at: Procurement.unl.edu
 - c. Bidder's Requests for Information. In writing by email to B Muehling, cc DLR. Bmuehling2@unl.edu and jbadami@DLRGROUP.com
 - d. Bidder's Substitution Request/Prior Approval Request. Section 7.0
 - e. Addenda. Addendum number 1 was issued.
4. Contracting Requirements were reviewed:
 - a. A draft Agreement is included. Filling in the missing contract information is the only contract modifications anticipated.
 - b. Bidders' review of the General Conditions was recommended. The General Conditions were not reviewed in detail.
 - c. Review of the Supplementary Conditions is also recommended. The Supplementary Conditions were not reviewed in detail.

UNL East Stadium-
Athletic Performance Lab #C049P139

- d. Other Owner requirements. Liquidated damages in the amount of \$199/day will apply. Review of the bid documents and contract requirements is recommended.
5. Construction Documents:
- a. The Scope of Work was reviewed. See specification Summary of Work Section 01 10 00.
 - b. Temporary Facilities. Spec section 01 50 00. There is no space for job trailer or other staging available East of the building. It is anticipated that the successful bidder will provide their job office in the shell space to be developed. Space for a small job office may be found in other portions of the original stadium but not space has been identified as yet. Staging cannot disrupt use of the stadium nor can it delay other construction work.
 - c. DLR reviewed project scope briefly.
 - 1) A clarification of the drywall work required at the mechanical level will be issued by addendum.
 - d. Use of Site. Per summary of work. Deliveries for this project are anticipated to be received at the stadiums NW dock. Access would be through the N Stadium and up the freight elevator at the east end of North Stadium. Alternate access from the new East of the stadium addition or from the new south dock in the East stadium may be possible if it is coordinated with the ESIP Constriction Manager and the CB3 Contractor. Access to and from the new concourse will need to be coordinated with other contractors to avoid delays in the other contracted work. Perking permits may be obtained at UNL Parking Services.
 - e. Work Restrictions. Per summary of work. APL work cannot delay other contracts.
 - f. Alternates, Allowances, and Unit Prices- Two alternates are included in the bid documents.
 - 1) Alternate 1 adds a bridge link of the second floors between the CB3 lab and the APL project.
 - 2) Alternate 2 adds a window into the escalator shaft.There are no unit prices or allowances.
 - g. Substitutions following award. Per specs 01 25 00. Substitutions post bid are limited to changes per cause, but not for the contractor's bid savings. Value engineering substitutions may be considered if savings are credited to the Owner.
6. Separate Contracts on or near the site were discussed.
- a. Work by Owner was discussed. EMCS. Keying doors, telecom wiring (raceway and conduits are in contract.
 - b. Work of Other Contracts was discussed. The ESIP contractor, the CB3 contractor and a stadium repairs contractor. The movable partitions system within the project are to be by the yet to be determined Owner's contractor. Movable partitions and other equipment work and the APL work must be coordinated by the APL Contactor.
 - c. Cooperation by all contractors on site is expected by the Owner.
7. Schedule:
- a. Project Schedule. See spec 01 32 00. Key dates for the East Stadium Improvements project will be issued by addendum.
Contract Time. To be determined by bids but August 1, 2013 or sooner is the Owner's desired substantial completion date. The bidder's construction schedule may be a factor in the award of this contract. Liquidated Damages. \$199/day will apply.
 - b. Other Bidder Questions.
 - 1) Q- What is the construction budget? A- The APL contractor construction budget is \$3,439,000. The overall budget is \$5,000,000.

UNL East Stadium-
Athletic Performance Lab #C049P139

- 2) Q- Will the sign-in sheet be distributed? A- Yes, by addendum.
8. Site/facility visit or walk-through. All bidders were invited to tour the project site. No notes issued from the walk-through
9. Post-Meeting Addendum will be issued to clarify items noted. Written questions should be issued by email to Brad Muehling and copied to John Badami.

End of Meeting

Purpose: PRE-BID Mtg

Project Name: EAST STADIUM APL Project No. C049P139

Date: 11/20/12 Time: 2:00 PM Location: 1901 Y STREET

Name	Organization	Phone	Fax	E-Mail
<u>BRAD MUEHLING</u>	<u>UNL</u>	<u>472-9612</u>		<u>Bmuehling2@unl.edu</u>
<u>DAVID CIAVARELLA</u>	<u>DLR GROUP</u>	<u>742-4200</u>		<u>dciaarella@dlrgroup.com</u>
<u>JOHN RADAMSKI</u>	<u>DLR GROUP</u>	<u>742-4200</u>		<u>JRADAMSKI@DLRGROUP.COM</u>
<u>DONALD WANEK</u>	<u>Apex Plumbing & Heating</u>	<u>836-2101</u>	<u>836-2272</u>	<u>apex-plumbing@hotmail.com</u> <u>aschofersman@boydjones.biz</u>
<u>Adam Schifersman</u>	<u>Boyd Jones</u>	<u>575-4027</u>		<u>boydjones.biz</u>
<u>Eel Zastera</u>	<u>Kiangy Const</u>	<u>415-4400</u>		<u>eez@kco Builders.com</u>
<u>FANDY BANNER</u>	<u>ELKHORN WEST</u>	<u>215-5208</u>		<u>fbanner@elkhornwest.com</u>
<u>Josh Weekly</u>	<u>Chester Construction</u>	<u>477-6745</u>		<u>jweekly@chesterconstruction.com</u>
<u>JAYMES KRAUCEK</u>	<u>HAUSMANN</u>	<u>326-7109</u>		<u>JAYMESK@HAUSMANNCONSTRUCTION.COM</u>
<u>Chuck Richter</u>	<u>SAMPSON CONST</u>	<u>402-434-5450</u>		<u>chuck@samsonconstruction.com</u>
<u>BIFF SCHOFIELD</u>	<u>ILS</u>	<u>402-944-2032</u>		<u>biff@innovlab.com</u>
<u>STEVE GRESS</u>	<u>ILS</u>	<u>402-944-2252</u>		<u>Steve@innovlab.com</u>
<u>Eric Neff</u>	<u>NGL Group</u>	<u>402-261-5489</u>	<u>402-261-5446</u>	<u>eneff@ngcgroupinc.com</u>
<u>Ray Rife</u>	<u>Rife Const.</u>	<u>402-551-5741</u>		<u>Ben@RifeConstruction.com</u>
<u>Rick Hart</u>	<u>Rogge G.C.</u>	<u>470-1989</u>		<u>rrogge@roggeinc.com</u>
<u>Bern Hottovy</u>	<u>UNL FMC</u>	<u>472-4208</u>		<u>bhottovy2@unl.edu</u>
<u>David Rosacker</u>	<u>R:A LLC</u>	<u>490-8920</u>		<u>davidr@rosackerassociates.com</u>
<u>JOHN INGRAM</u>	<u>NU Athletics</u>	<u>472-1959</u>		<u>jingram@huskers.com</u>
<u>DAK ESTERGOVED</u>	<u>AHLI</u>	<u>472-0771</u>		<u>dostergov@dhuskers.com</u>

SECTION 088113 - DECORATIVE GLASS GLAZING

Attachment No. 2 to Addendum No.
CC-2, dated November 29, 2012.

PART 1 - GENERAL

1.1 SUMMARY

- A. Section includes the following decorative glass for interior applications:

1. Glass with decorative film overlay (frosted glass).

1.2 DEFINITION

- A. Glass Thickness: Indicated by thickness designations in millimeters according to ASTM C 1036.

1.3 SUBMITTALS

- A. Product Data: For each decorative-glass and glazing product indicated.
- B. Samples: For each exposed product and for each color and texture specified.
- C. Product certificates.
- D. Maintenance data.

1.4 QUALITY ASSURANCE

- A. Installer Qualifications: A qualified installer who employs glass installers for this Project who are certified under NGA's Certified Glass Installer Program.
- B. Glazing Publications: Comply with published recommendations in GANA's "Glazing Manual" unless more stringent requirements are indicated. See these publications for glazing terms not otherwise defined in this Section or in referenced standards.
- C. Safety Glazing: Where safety glazing is indicated, comply with testing requirements in 16 CFR 1201 for Category II materials.

PART 2 - PRODUCTS

2.1 GLASS PRODUCTS, GENERAL

- A. Thickness: Where glass thickness is indicated, it is a minimum. Provide glass lites in thicknesses as needed to comply with requirements indicated.

- B. Strength: Where float glass is indicated, provide annealed float glass, Kind HS heat-treated float glass, or Kind FT heat-treated float glass as needed to comply with requirements indicated. Where heat-strengthened glass is indicated, provide Kind HS heat-treated float glass or Kind FT heat-treated float glass as needed to comply with requirements indicated. Where fully tempered glass is indicated, provide Kind FT heat-treated float glass.

2.2 MONOLITHIC-GLASS PRODUCTS

- A. Float Glass: ASTM C 1036, Type I, Quality-Q3, Class I (clear) unless otherwise indicated.
- B. Heat-Treated Float Glass: ASTM C 1048; Type I; Quality-Q3; Class I (clear) unless otherwise indicated; of kind and condition indicated.

2.3 DECORATIVE GLASS TYPES

- A. Decorative Glass (Frosted Glass): Glass with decorative film overlay. Use translucent, dimensionally stable, cast PVC film, 5-mil minimum thickness, with pressure-sensitive, clear adhesive back for adhering to glass and releasable protective backing.
 - 1. Products: Subject to compliance with requirements, provide one of the following:
 - a. FDC Graphic Films, Inc.; Intermediate Frosted Crystal Vinyl Film Series 3804, Silver.
 - b. LOOK architectural coatings 3M; Scotchcal Dusted Crystal, 5 mil laminate window film.
 - 2. Glass Type: Clear fully tempered float glass.
 - 3. Glass Thickness: 6.0 mm.
 - 4. Comply with requirements for safety glazing.
 - 5. Glass Pattern: Smooth.
 - 6. Location: Door 212.

2.4 GLAZING MATERIALS

- A. Glazing Gaskets, Sealants, Tapes, and Miscellaneous Glazing Materials: As specified in Division 08 Section "Glazing."

2.5 DECORATIVE-GLASS FABRICATION

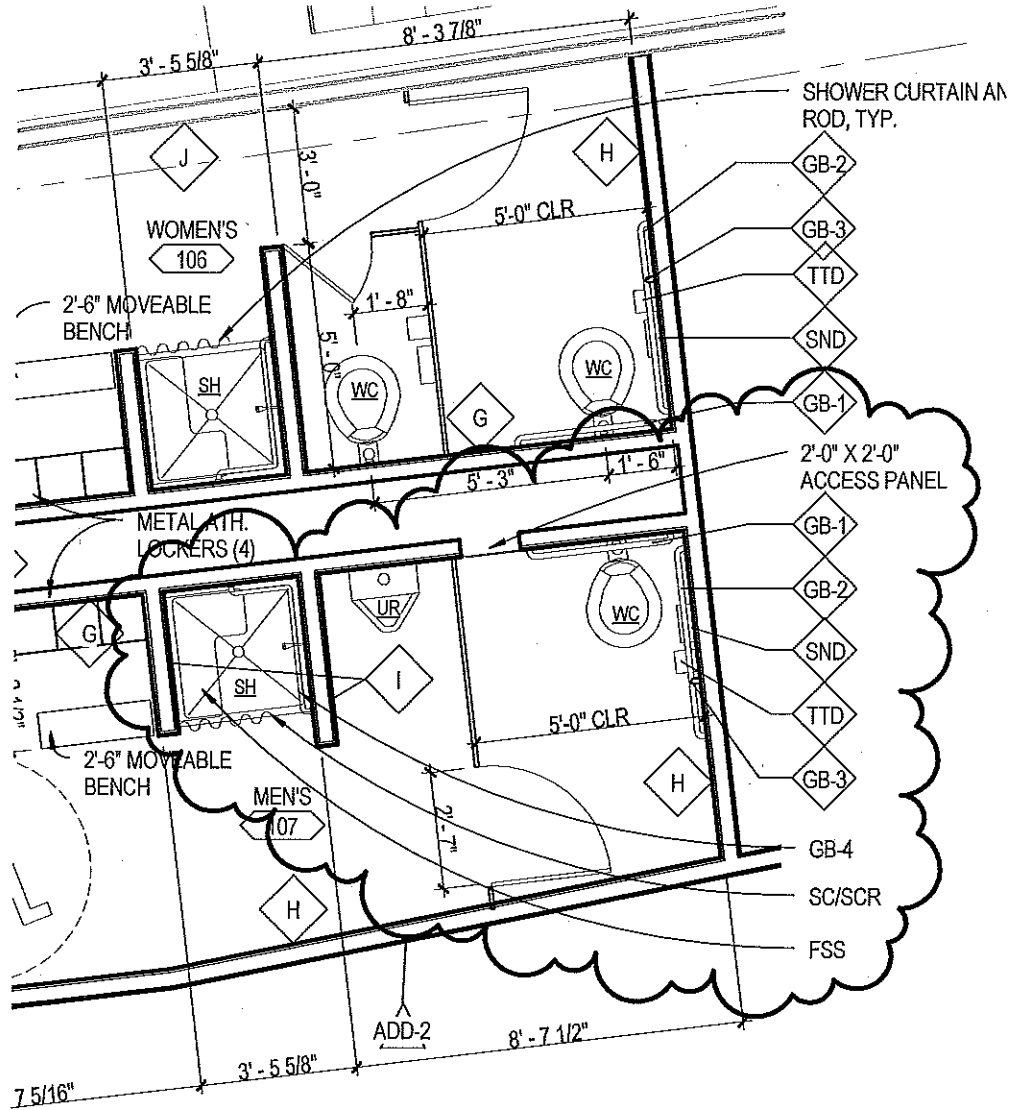
- A. Decorative Film Overlay: Apply squarely aligned to glass edges, uniformly smooth, and free from tears, air bubbles, wrinkles, and rough edges, in single sheet as indicated on Drawings to the back face of clean glass, according to manufacturer's written instructions, including surface preparation and application temperature limitations.

PART 3 - EXECUTION

3.1 INSTALLATION

- A. Examine decorative-glass framing members, with Installer present, for compliance with the following:
 - 1. Manufacturing and installation tolerances, including those for size, squareness, and offsets at corners.
 - 2. Minimum required face or edge clearances.
 - 3. Effective sealing between joints of decorative-glass framing members.
- B. Proceed with installation only after unsatisfactory conditions have been corrected.
- C. Set decorative-glass units in each series true in line with uniform orientation, pattern, draw, bow, and similar characteristics.
- D. Set decorative glass in locations indicated on Drawings.
- E. Decorative Glass: Install glazing as specified in Division 08 Section "Glazing."
- F. Protect decorative glass from damage immediately after installation by attaching crossed streamers to framing and held away from glass. Do not apply markers to glass surface. Remove nonpermanent labels, and clean surfaces.
- G. Protect glass from contact with contaminating substances resulting from construction operations. If, despite such protection, contaminating substances do come into contact with glass, remove substances immediately as recommended in writing by glass manufacturer.
- H. Remove and replace glass that is broken, chipped, cracked, or abraded or that is damaged from natural causes, accidents, and vandalism, during construction period.

END OF SECTION 088113



Attachment No. **A1**
to Addendum No. 2
Dated: 11-29-2012

^
ADD-2

ABBREVIATIONS

BCS	BABY CHANGING STATION
EWC	ELECTRIC WATER COOLER
FSS	FOLDING SHOWER SEAT
GB-1	GRAB BAR
GB-2	GRAB BAR
GB-3	GRAB BAR (VERTICAL)
GB-4	GRAB BAR
HC	ADA ACCESSIBLE HEIGHT
LAV	LAVATORY
MBH	MOP / BROOM HOLDER
MR	MIRROR
RH	ROBE HOOK
SC/SCR	SHOWER CURTAIN / SHOWER CURTAIN ROD
SCD	SEAT COVER DISPENSER
SD	LIQUID SOAP DISPENSER
SH	SHOWER
SND	SANITARY NAPKIN DISPOSAL
SNV	NAPKIN/TAMPON VENDOR
SPC	SPECIMEN PASS-THRU CABINET
TD	SEMI-RECESSED TOWEL DISPENSER
TD/WR	SEMI-RECESSED TOWEL AND WASTE RECEPTACLE
TPH	SURFACE MOUNTED TOILET PAPER DISPENSER
UR	URNINAL
US	UTILITY SHELF
WC	WATER CLOSET
PTD-WR	SEMI-RECESSED WASTE RECEPTACLE

Attachment No. **A2**
to Addendum No. 2
Dated: 11-29-2012



DLR Group

Architecture Engineering Planning Interiors

©2012, DLR Group Inc, a Nebraska corporation, ALL RIGHTS RESERVED

A2.1

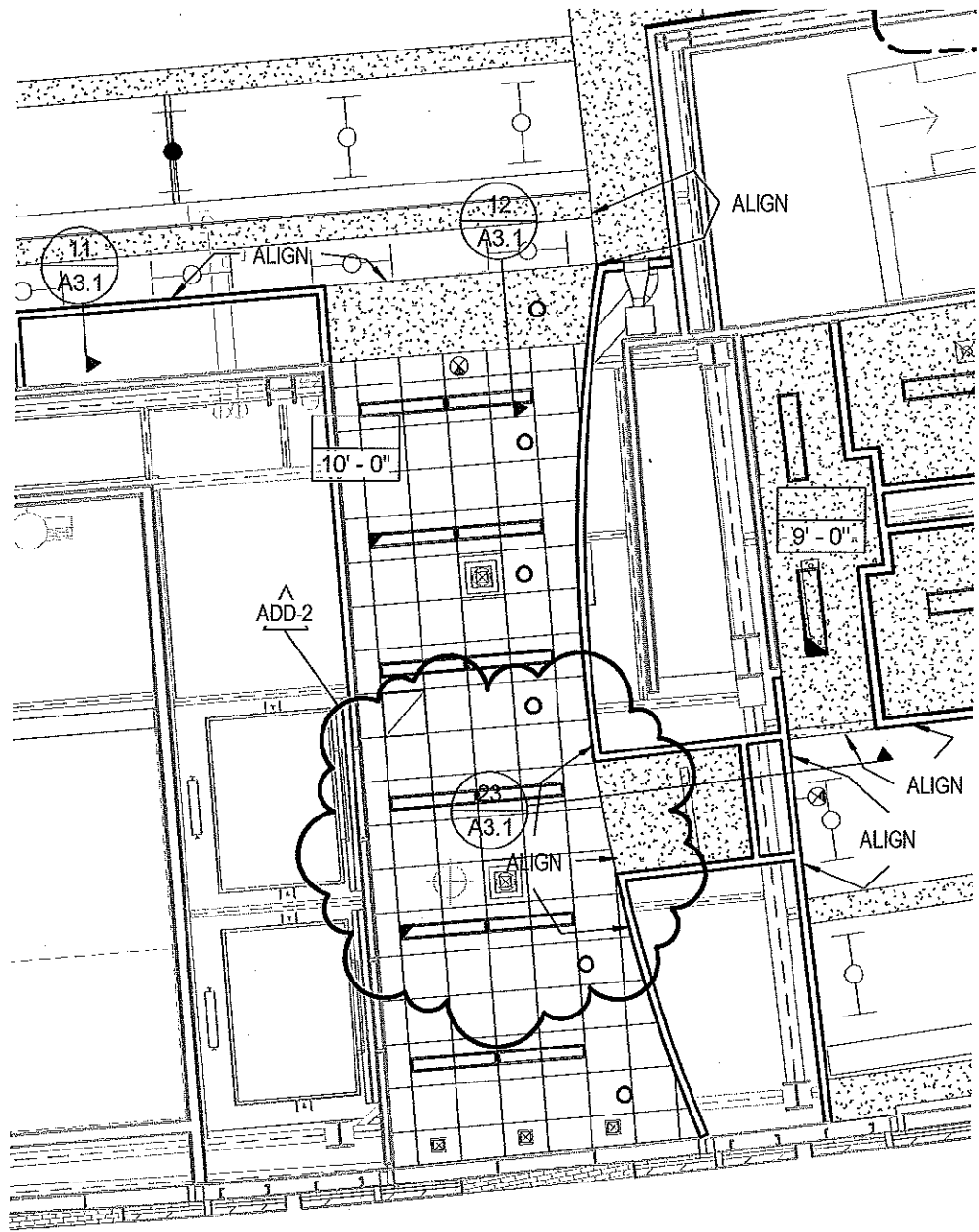
10-11234-05

11-07-2012

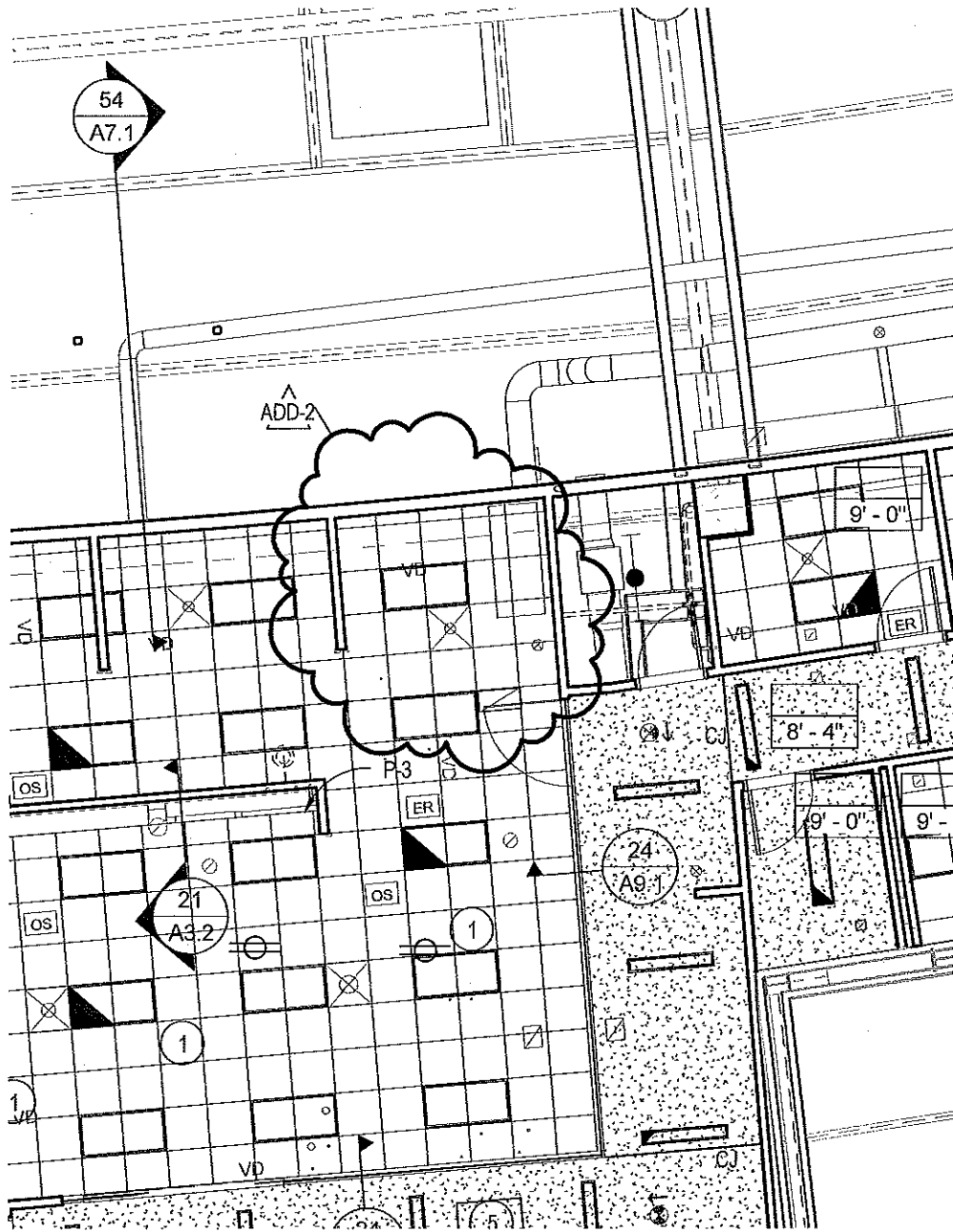
LARGE SCALE PLANS

UNIVERSITY OF NEBRASKA - LINCOLN

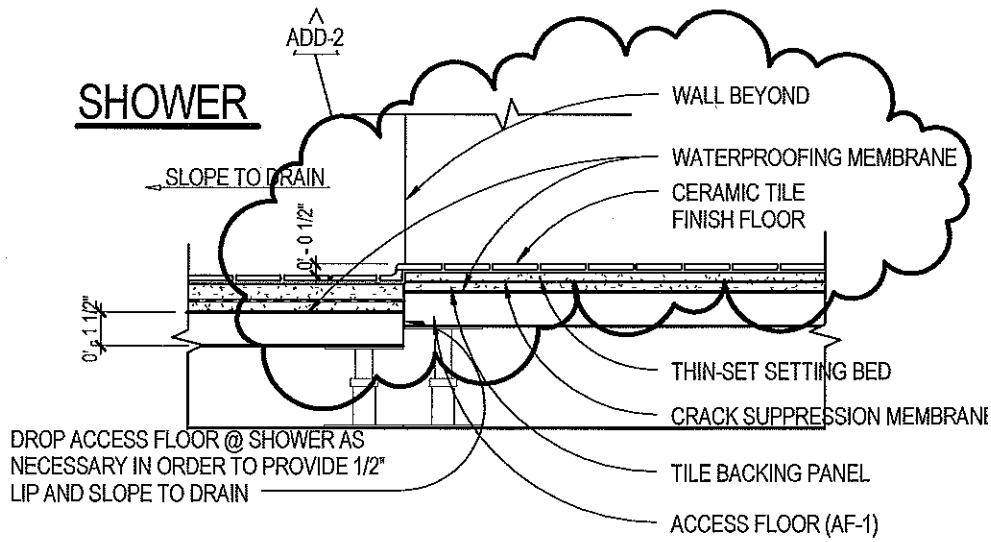
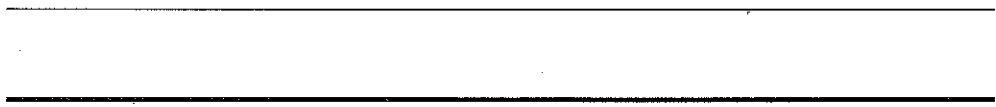
EAST STADIUM ATHLETIC PERFORMANCE LAB



Attachment No. **A3**
 to Addendum No. 2
 Dated: 11-29-2012



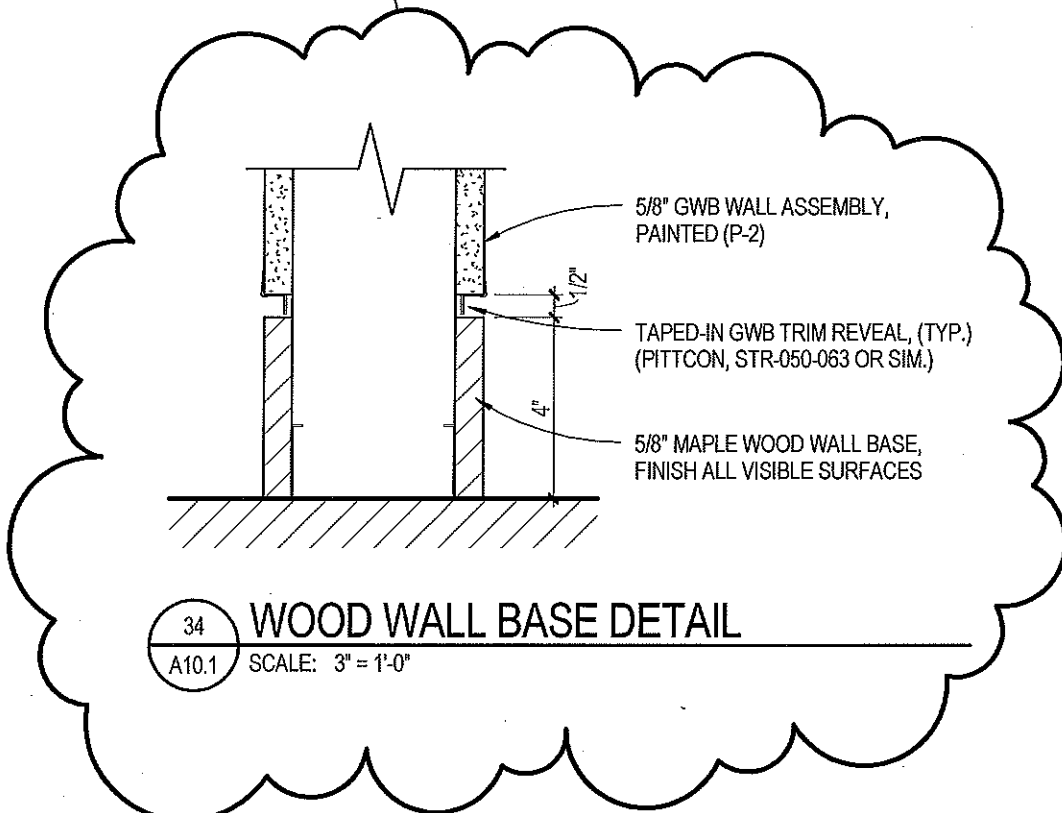
Attachment No. **A4**
 to Addendum No. 2
 Dated: 11-29-2012



15 HC SHOWER CURB
 A10.1 SCALE: 1 1/2" = 1'-0"

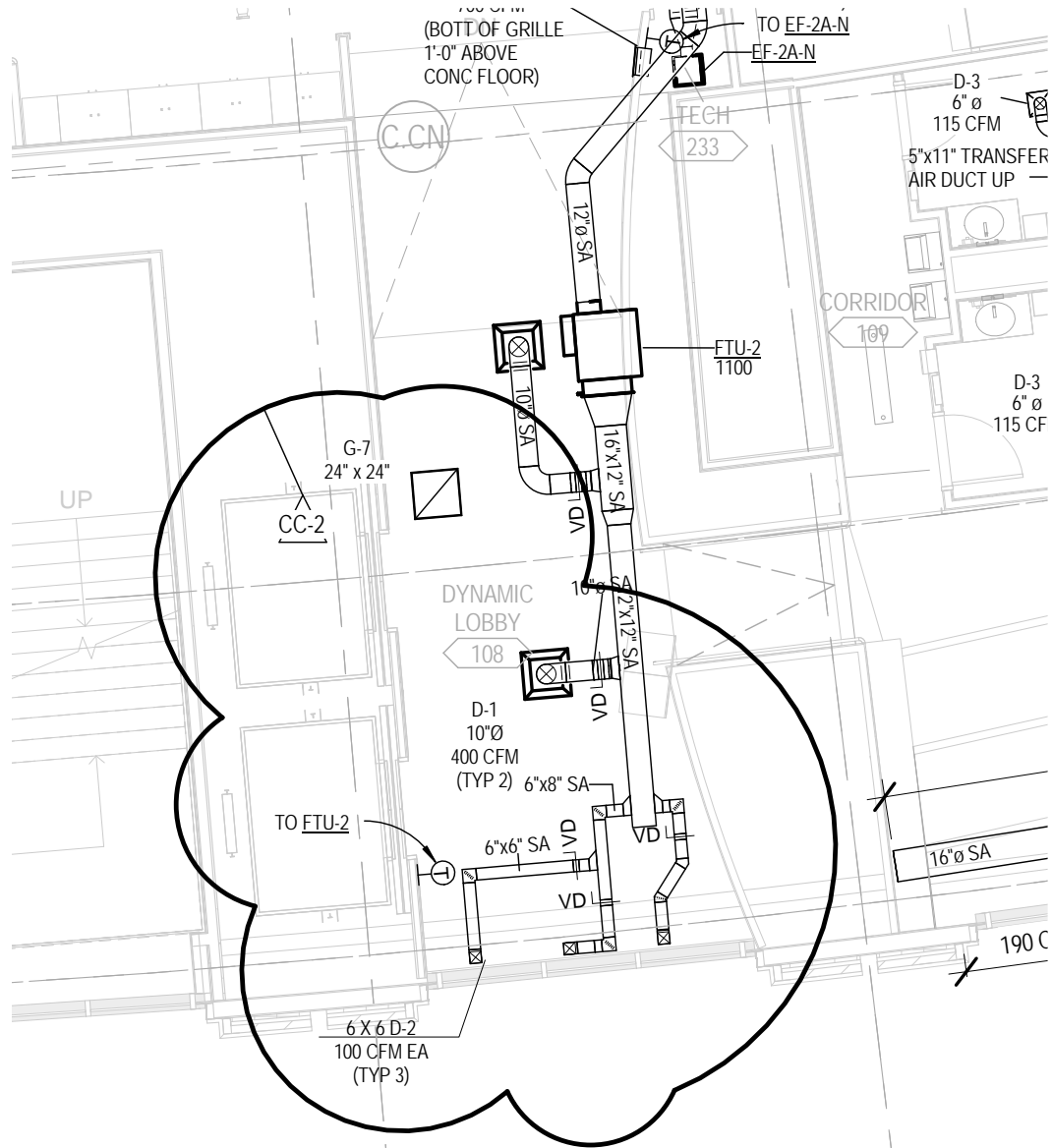
Attachment No. **A5**
 to Addendum No. 2
 Dated: 11-29-2012

ADD-2



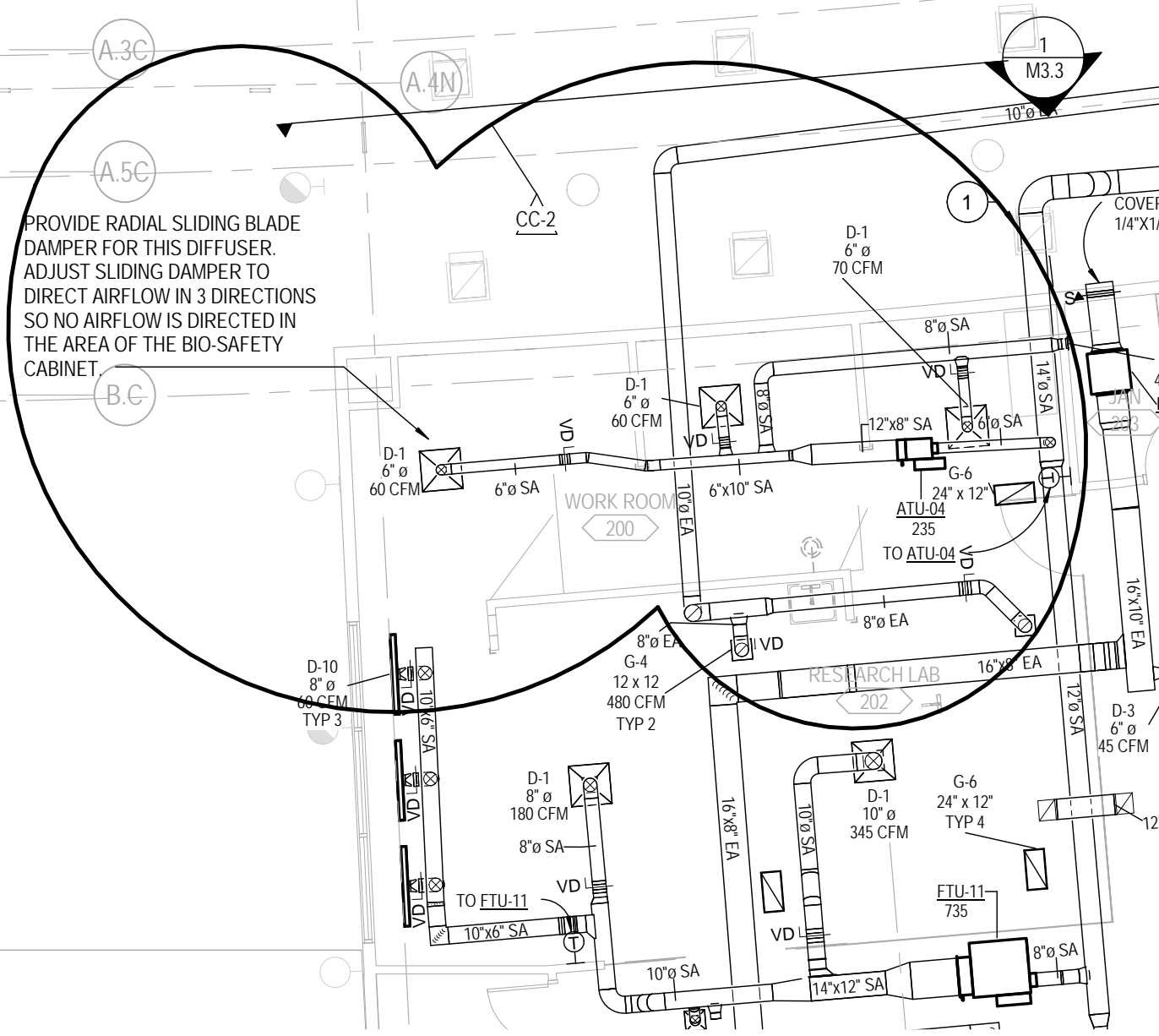
34 WOOD WALL BASE DETAIL
A10.1 SCALE: 3" = 1'-0"

Attachment No. **A6**
to Addendum No. 2
Dated: 11-29-2012



Attachment No. M1
to CC-2
Dated: 11-29-2012

PROVIDE RADIAL SLIDING BLADE DAMPER FOR THIS DIFFUSER.
 ADJUST SLIDING DAMPER TO DIRECT AIRFLOW IN 3 DIRECTIONS
 SO NO AIRFLOW IS DIRECTED IN THE AREA OF THE BIO-SAFETY
 CABINET.

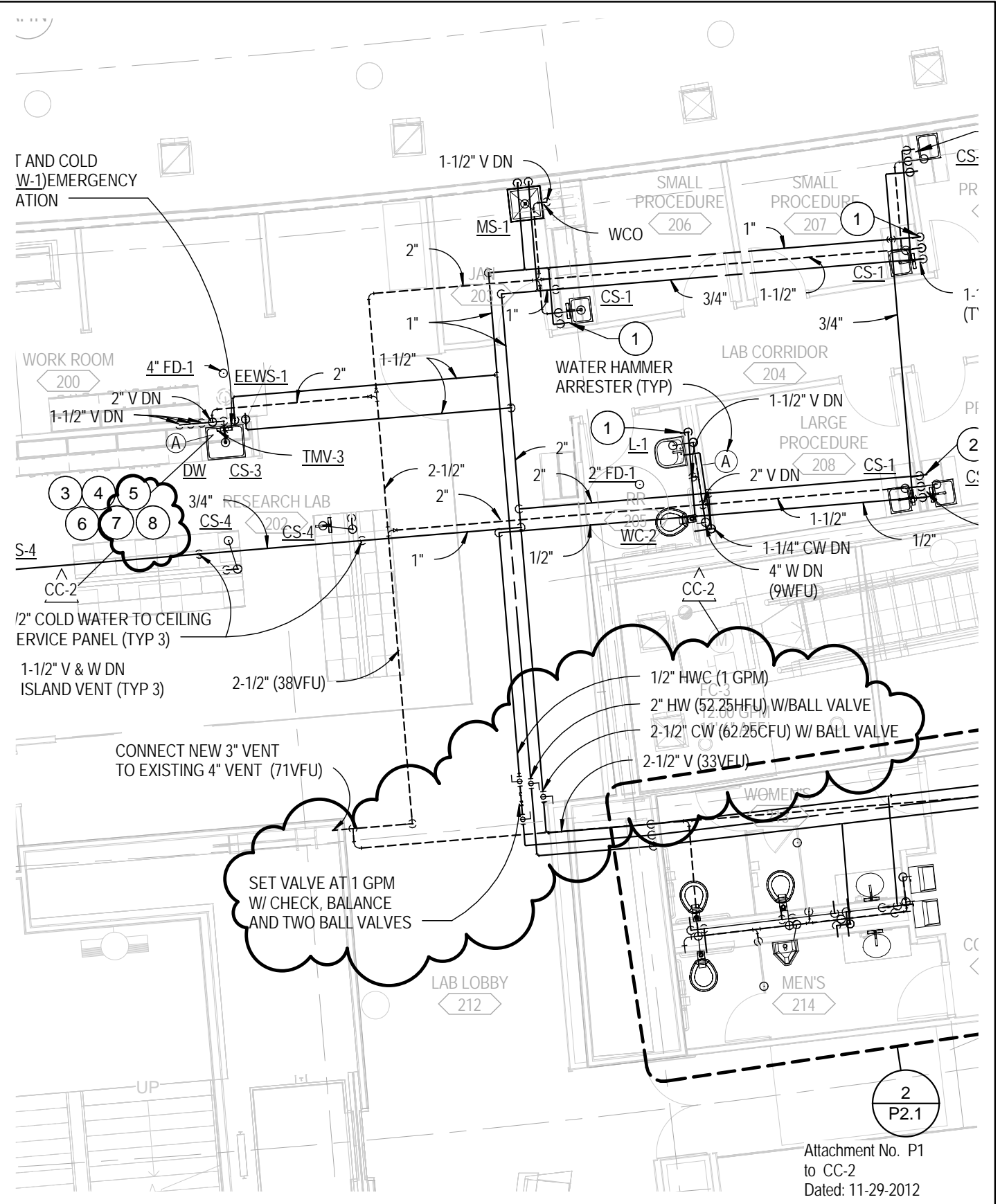


Attachment No. M2
 to CC-2
 Dated: 11-29-2012

PLUMBING FIXTURE CONNECTION SCHEDULE							
MARK	FIXTURE	FIXTURE CONNECTIONS				REMARKS	MECH NOTES
		CW	HW	WASTE	VENT		
CS-1	COUNTER SINK	1/2"	1/2"	1-1/2"	1-1/2"	COUNTER-TOP MOUNTED	
CS-2	COUNTER SINK, DOUBLE COMPARTMENT	1/2"	1/2"	1-1/2"	1-1/2"	COUNTER-TOP MOUNTED	
CS-3	COUNTER SINK, SINGLE COMPARTMENT WITH EYEWASH (EEW-1)	1/2"	1/2"	1-1/2"	1-1/2"	COUNTER-TOP MOUNTED	2
CS-4	CUP SINK	-	-	1-1/2"	1-1/2"	COUNTER-TOP MOUNTED	
EEWS-1	EMERGENCY EYE WASH SHOWER, ADA COMPLIANT	1-1/4"	1-1/4"	1-1/4"	-	36" TO ADA SPOUT	
EWC-1	ELECTRIC WATER COOLER TWO LEVEL, ADA COMPLIANT	1/2"	-	2 @ 1-1/4"	2 @ 1-1/4"	FLOOR MOUNTED	1
IMF-1	ICE MACHINE FITTING	1/2"	-	-	-		
L-1	LAVATORY, WALL HUNG, HDCP	1/2"	1/2"	1-1/4"	1-1/4"	34" TO RIM	
L-2	LAVATORY, UNDER COUNTER MOUNT	1/2"	1/2"	1-1/4"	1-1/4"	UNDER COUNTER MOUNTED	
MS-1	MOP SINK	1/2"	1/2"	3"	SEE PLANS	FLOOR MOUNTED	
SH-1	SHOWER, INDIVIDUAL ADA COMPLIANT	1/2"	1/2"	-	-	CONTROL VALVE AREA TO BE 38" TO 48" AFF, 72" TO HEAD	
UR-1	URINAL, ADA COMPLIANT	1"	-	2"	1-1/2"	17" TO RIM	
WC-1	WATER CLOSET	1"	-	4"	2"	15" TO RIM	
WC-2	WATER CLOSET, ADA COMPLIANT	1"	-	4"	2"	17" TO RIM	

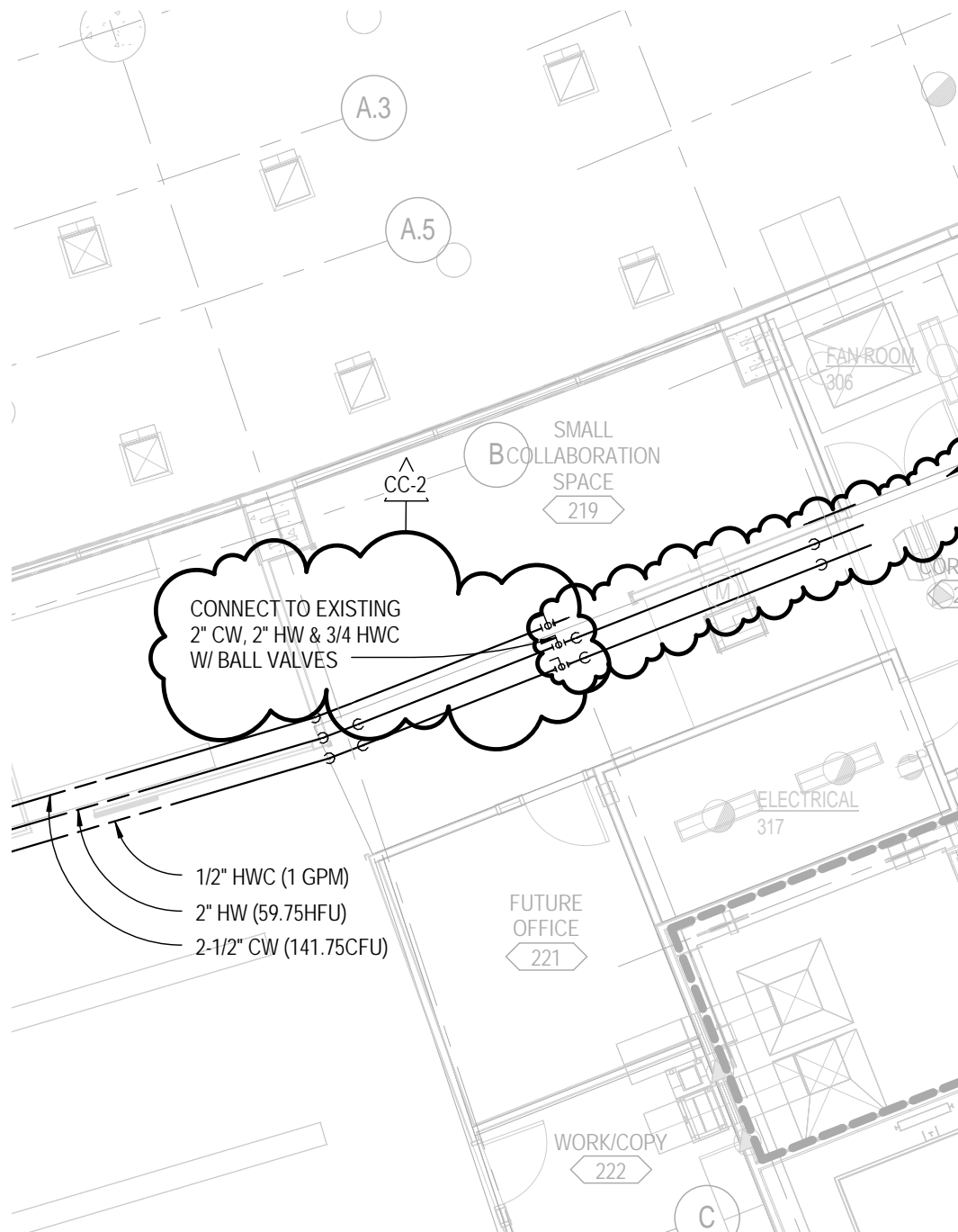
MECHANICAL NOTES:

1. PROVIDE 1-1/4" COPPER DRAIN LINE FROM WASTE CONNECTION AT SHOWER STAND AND SPILL TO FLOOR DRAIN.
2. PROVIDE 1/2" TEMPED WATER FROM MIXING VALVE (TMV-3) TO EYEWASH (EEW-1)

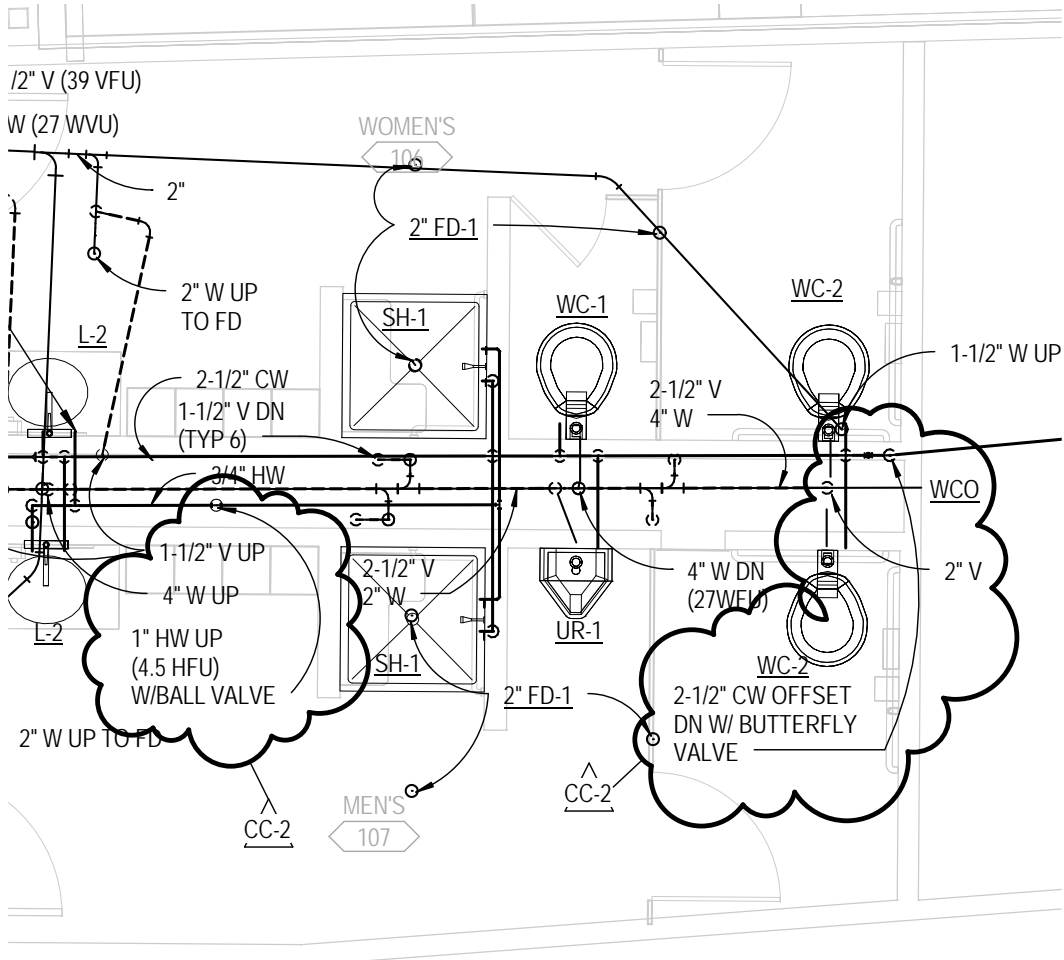


2
P2.1

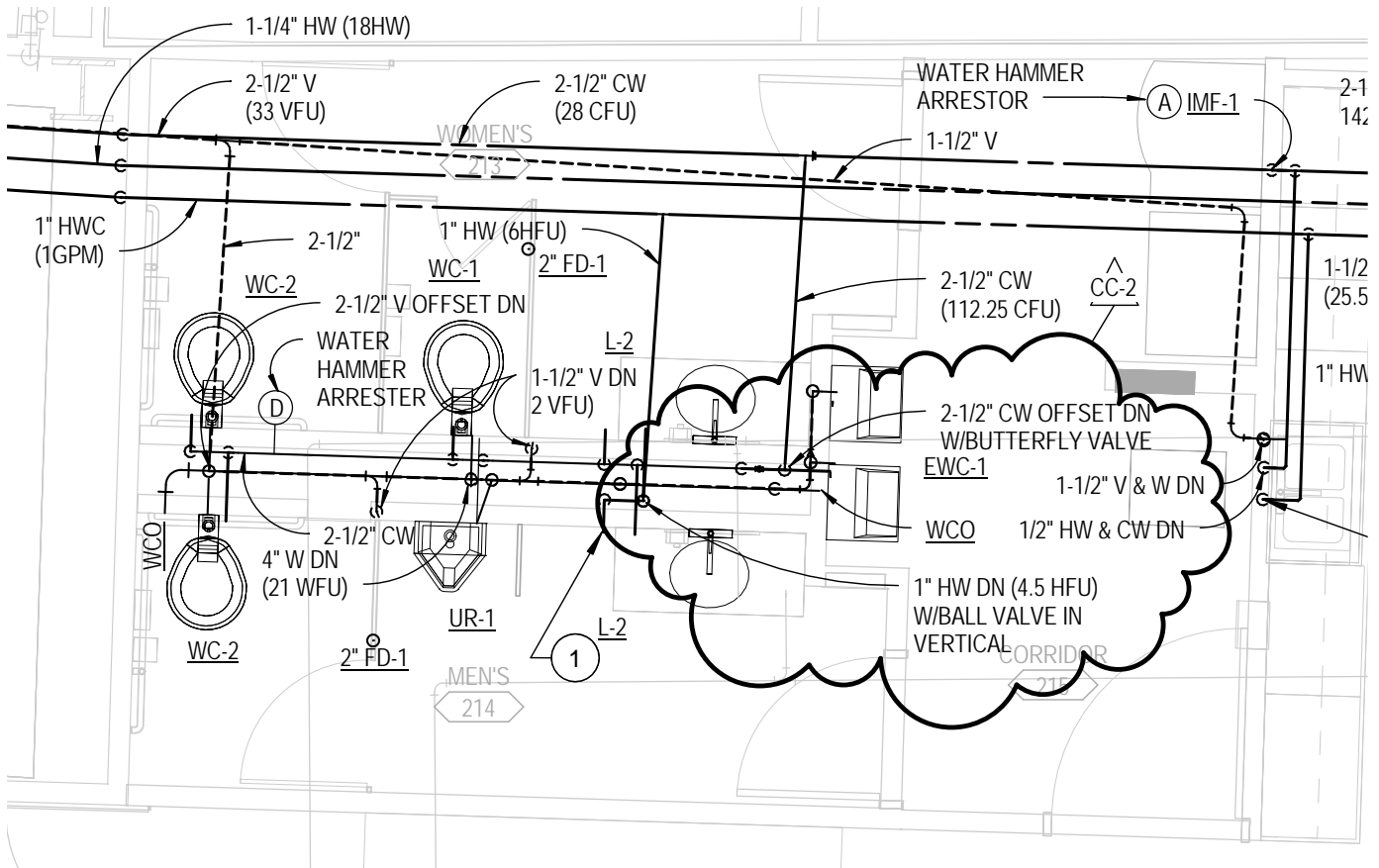
Attachment No. P1
to CC-2
Dated: 11-29-2012



Attachment No. P2
to CC-2
Dated: 11-29-2012



Attachment No. P3
to CC-2
Dated: 11/29/2012



2 LARGE SCALE PLUMBING PLAN, UPPER SHELL SPACE
 P2.1 SCALE: 1/4" = 1'-0"

Attachment No. P4
 to CC-2
 Dated: 11/29/2012