

**ARCHITECTURAL DESIGN ASSOCIATES, P.C.  
7501 'O' STREET, SUITE 105  
LINCOLN, NE. 68510**

**November 26, 2012**

**Homestead Nursing & Rehabilitation Center Addition  
4735 South 54<sup>th</sup> Street  
Lincoln, Nebraska**

---

**ADDENDUM #1**

The Architect issues this addendum to Cheever Construction, for distribution to all sub-contractors and suppliers before receipt of proposals. Bidders shall acknowledge the receipt of this Addendum on their bid form and all information and instructions given herein shall become a part of the Contract Documents.

**Architectural**

**Drawings**

**Item No. A2-1: SHEET D1.1 – DEMOLITION PLANS**

- A. Under the "DEMOLITION NOTES", Note 7, change to read in the second line:  
"ADD ALTERNATE A-3" in lieu of Alternate A-1.

# ADDENDUM



**Date:** November 26, 2012

**Project:** Homestead Nursing & Rehabilitation  
Center Addition

**To:** Mr Dick Bergt  
Architectural Design Associates  
7501 'O' Street – Suite 105  
Lincoln, NE 68510

**Project No.:** 11013  
**Addendum No.:** 2  
**CC:**

---

*All work shall be in accordance with the terms, stipulations, and conditions of the original contract.*

## CHANGES TO PROJECT DRAWINGS

### Electrical

**1. Refer to specifications section #262416 Panelboards.**

- A. Delete sentence #2.04 B 3 – Micro-Adjustable electronic trip breakers for circuit-breaker frame sizes 100A and larger.

**2. Sheet E2.1**

- A. See the attached drawing E2.1 1 of 3 for changes in Wing 2
- B. See the attached drawing E2.1 2 of 3 and 3 of 3 for changes in Wing 6.

**3. Sheet E3.1**

- A. See the attached drawing E3.1 1 of 1 for changes to Panel Schedule 'A'.

---

**By:** Steve Jensen

**Date:** 11-26-12

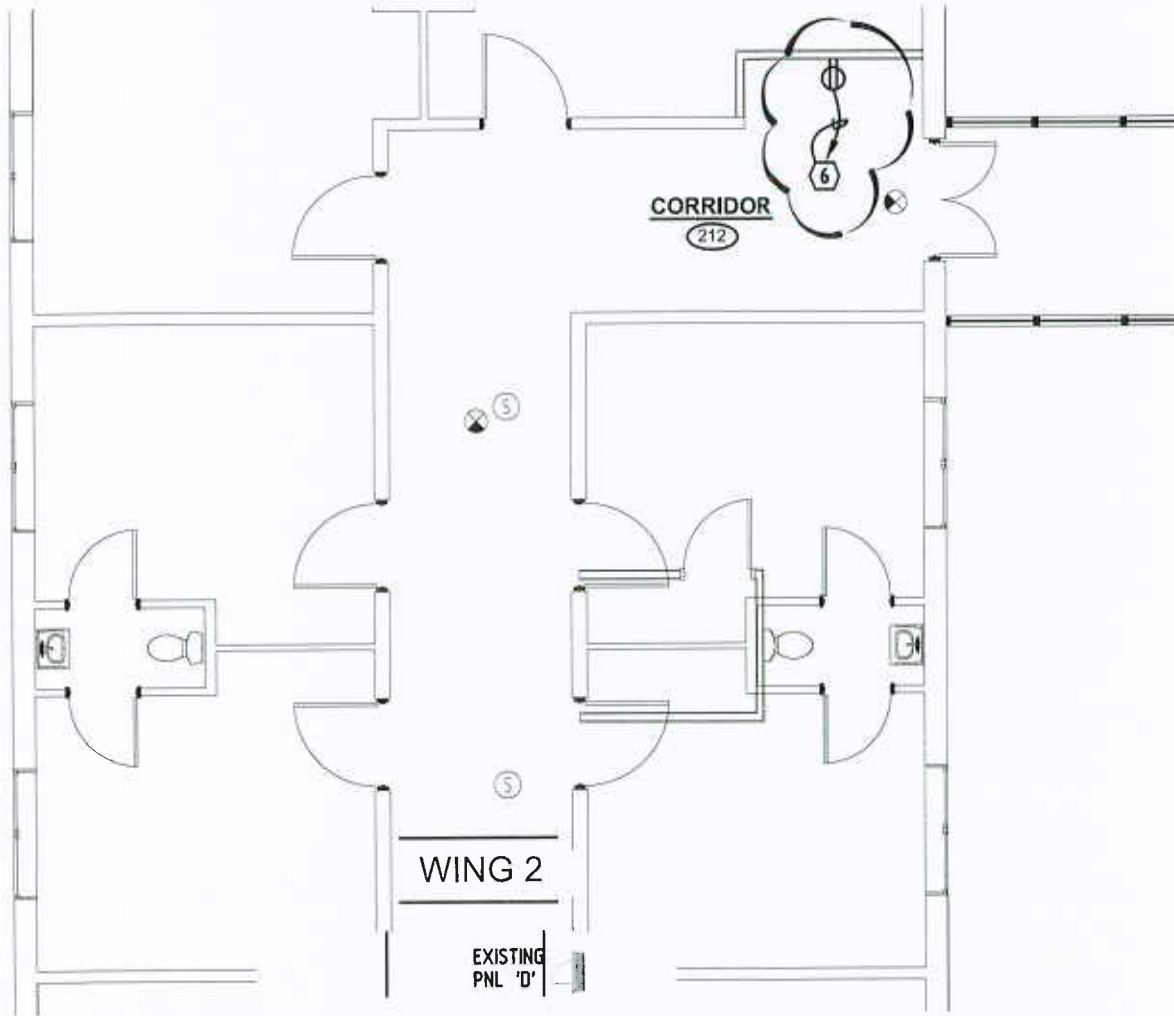
**SHEET NOTES**

**GENERAL NOTES**

KEY NOTE SYMBOL = (X)

**KEY NOTES**

- 6. ROUTE TO NEW 20/1 BREAKER IN NEAREST EXISTING PANEL. PROVIDE ALL TERMINATIONS AS REQUIRED.



**1**  
E2.1

# FIRST FLOOR ELECTRICAL PLAN - WING 2

1/8" = 1'-0"

4630 Antelope Creek Rd Ste 200 • Lincoln, NE 68506 • P: 402-488-0075 • F: 402-488-0272 • www.a-e-sys.com



PROJECT: HOMESTEAD NURSING & REHABILITATION CENTER ADDITION

PROJECT #: 11-013

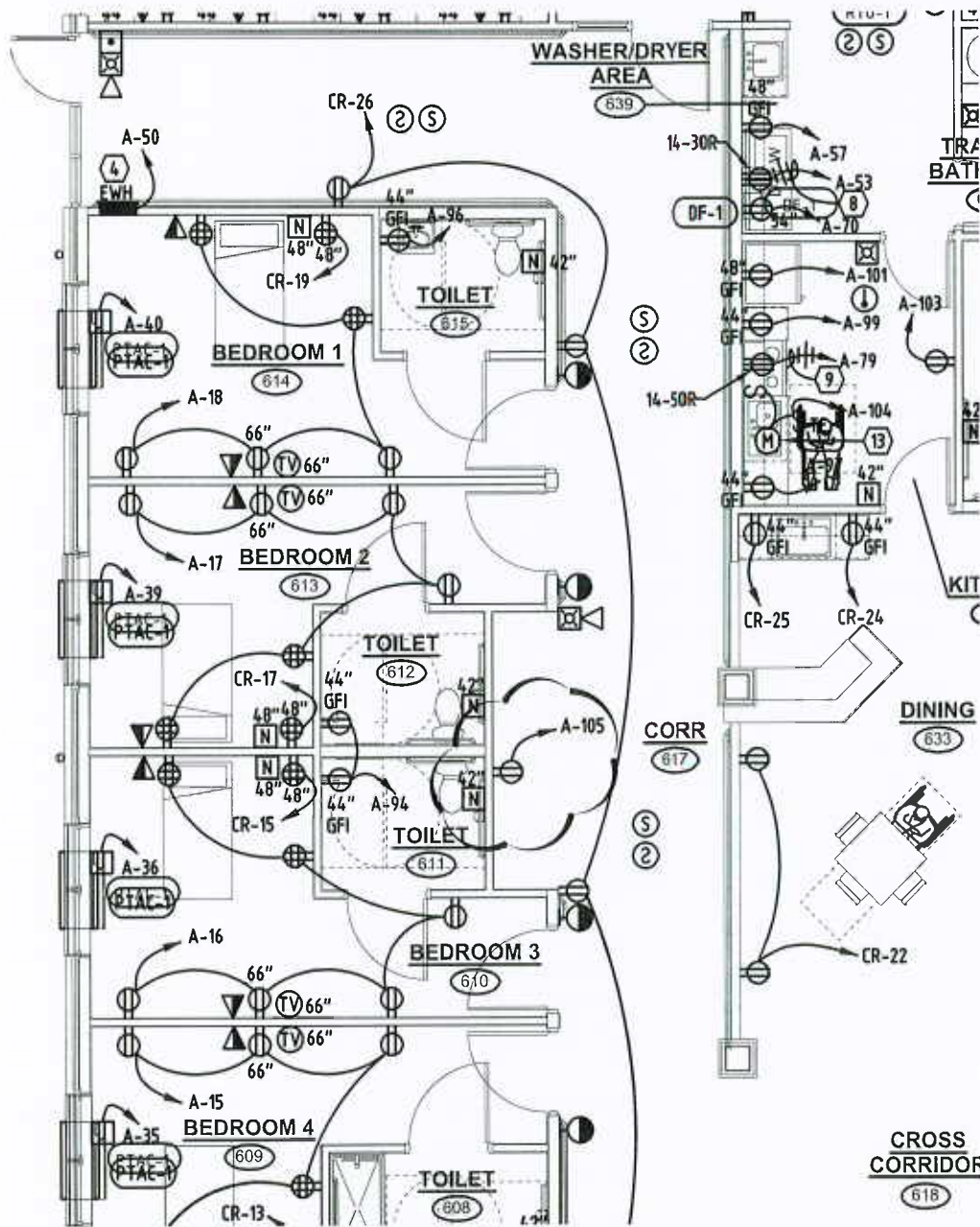
DATE: 11-26-12

DESCRIPTION: ADDENDUM #002

SHEET:

# E2.1

NUMBER: 1 of 3




**FIRST FLOOR ELECTRICAL  
PLAN - WING 6**

1/8" = 1'-0"

4630 Antelope Creek Rd Ste 200 • Lincoln, NE 68506 • P: 402-488-0075 • F: 402-488-0272 • www.a-e-sys.com



PROJECT: HOMESTEAD NURSING & REHABILITATION CENTER ADDITION

SHEET:

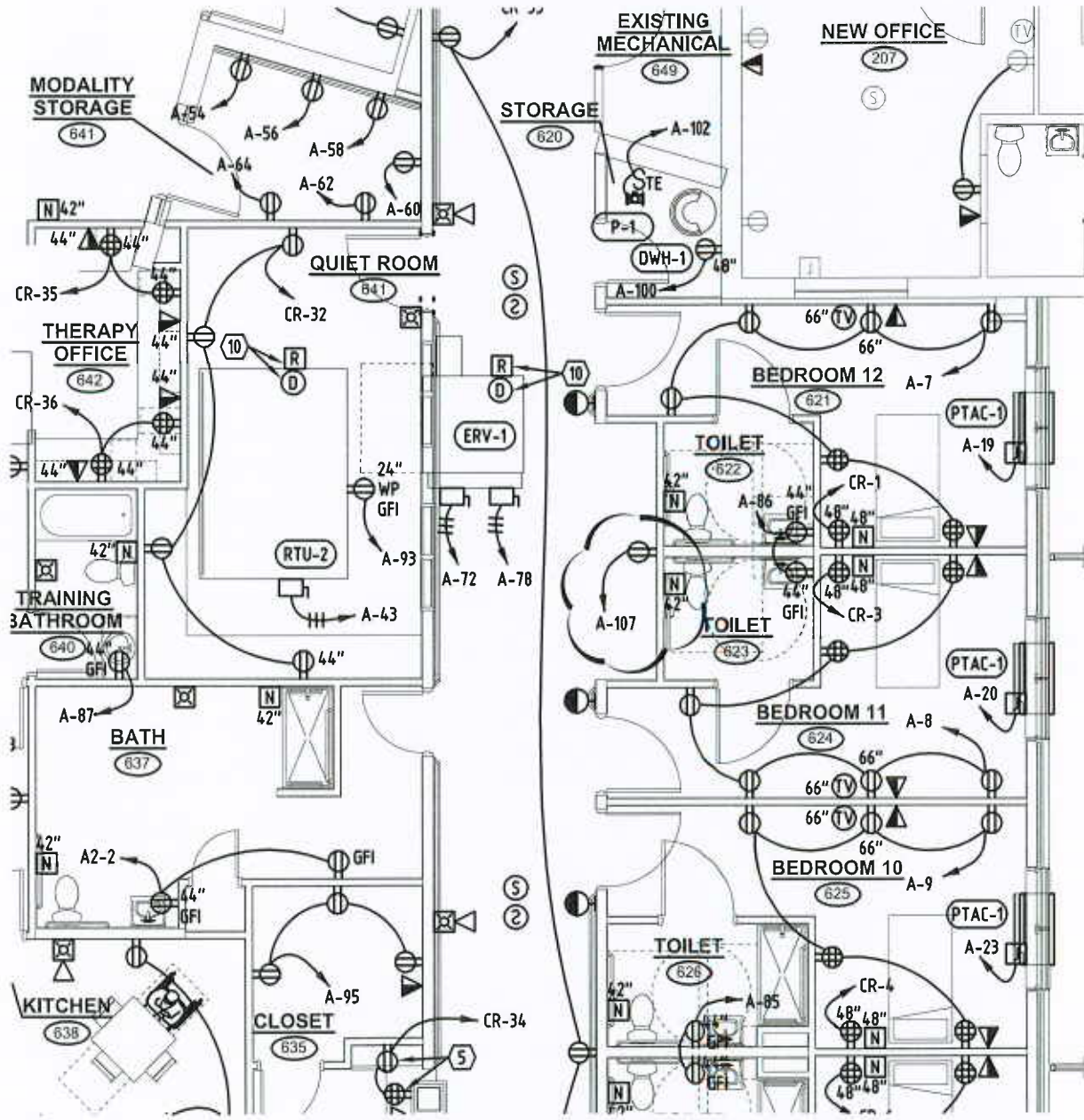
PROJECT #: 11-013

**E2.1**

DATE: 11-26-12

DESCRIPTION: ADDENDUM #002

NUMBER: 2 of 3



**1**  
E2.1

# FIRST FLOOR ELECTRICAL PLAN - WING 6

1/8" = 1'-0"

4630 Antelope Creek Rd Ste 200 • Lincoln, NE 68506 • P: 402-488-0075 • F: 402-488-0272 • www.a-e-sys.com



PROJECT: HOMESTEAD NURSING & REHABILITATION CENTER ADDITION

SHEET:

PROJECT #: 11-013

DATE: 11-26-12

DESCRIPTION: ADDENDUM #002

# E2.1

NUMBER: 3 of 3

# PANEL SCHEDULE

NEW  
NORMAL

DESIGNATION	INTERIOR	MAINS RATING	VOLTAGE	PHASE	WIRE	KAIC	MOUNT
A	MCB	600	120/208	3	4	22	SURFACE

## GENERAL NOTES

- COPPER BUS / 100% RATED COPPER NEUTRAL / FEED-THRU LUGS / SERIES RATED / MAIN SHUNT TRIP CIRCUIT BREAKER

NOTES	VA	DESCRIPTION	BRKR			PHASE	BRKR			DESCRIPTION	VA	NOTES
			AMP	POLE	CIRCUIT		CIRCUIT	POLE	AMP			
	400	TOILET 626/627 RECEPT	20	1	85	A	86	1	20	TOILET 622/623 RECEPT	400	
	200	TOILET 640 RECEPT	20	1	87	B	88	1	20	TOILET 630/631 RECEPT	400	
	400	LOUNGE 602 FLOOR RECEPT	20	1	89	C	90	1	20	TOILET 603/604 RECEPT	400	
	800	CROSS CORRIDOR 618 RECEPT	20	1	91	A	92	1	20	TOILET 607/608 RECEPT	400	
	200	RECEPT ON ROOF WING 6	20	1	93	B	94	1	20	TOILET 611/612 RECEPT	400	
	600	CLOSET 635 RECEPSTS	20	1	95	C	96	1	20	TOILET 615 RECEPT	200	
	200	KITCHEN 638 RECEPT	20	1	97	A	98	1	20	BATH 637 RECEPSTS	400	
	200	KITCHEN 638 RECEPT	20	1	99	B	100	1	20	DWH-1 RECEPT	200	
	200	KITCHEN 638 RECEPT	20	1	101	C	102	1	20	P-1	200	
	200	KITCHEN 638 RECEPT	20	1	103	A	104	1	20	GARBAGE DISPOSAL	200	
	400	LIFT RECEPT	20	1	105	B	106					
	400	LIFT RECEPT	20	1	107	C	108					
					109	A	110					
		SPARE	20	1	111	B	112	1	20	SPARE		
		SPARE	20	1	113	C	114	1	20	SPARE		
		SPARE	20	1	115	A	116	1	20	SPARE		
		SPARE	20	1	117	B	118	1	20	SPARE		
		SPARE	20	1	119	C	120	1	20	SPARE		
		SPARE	20	1	121	A	122	1	20	SPARE		
		SPARE	20	1	123	B	124	1	20	SPARE		
		SPARE	20	1	125	C	126	1	20	SPARE		

## NOTES

1. -



PROJECT: HOMESTEAD NURSING & REHABILITATION CENTER ADDITION  
 PROJECT #: 11-013  
 DATE: 11-26-12  
 DESCRIPTION: ADDENDUM #002

SHEET:

# E3.1

NUMBER: 1 of 1