

780-001-11

ADDENDUM NO. 1

The Architect/ Engineer issues this addendum, applicable to the above named project, to all known Contractors before receipt of proposal.

This addendum includes Item Number 1-1 thru 1-40. This addendum item shall be fully incorporated into the Bidding/Contract Documents and have the same force and effect as though originally included.

The Bidder shall acknowledge receipt of this Addendum No. 1 on the Bid Proposal Form in the place provided.

ARCHITECTURAL

Specifications

Item 1-1: Section 033000 – Cast-In-Place Concrete

Refer to section 2.5, G, 1, subject to compliance with the requirements of the section, add SpecChem as an acceptable manufacturer. (SpecChem Spec Hard)

Item 1-2: Section 042000 – Unit Masonry

Refer to section 2.7, subject to compliance with the requirements of the section, add EaCo Chem, Inc. as an acceptable manufacturer. (EaCo Chem NMD 80)

Item 1-3: Section 061000 – Rough Carpentry

Refer to section 2.10, A, 1, subject to compliance with the requirements of the section, add Polyguard Products as an acceptable manufacturer.

Item 1-4: Section 072100 – Building Insulation

Refer to section 2.2, B, subject to compliance with the requirements of the section, add ACH Foam Technologies. as an acceptable manufacturer. (Foam Control Plus+ 250 and Foam Control Plus+ 600)

Item 1-5: Section 078446 - Firestopping

Refer to section 2.2, A, subject to compliance with the requirements of the section, add Specified Technologies, Inc.. as an acceptable manufacturer.

780-001-11

Item 1-6: Section 075323 – Ethylene-Propylene-Diene-Monomer (EPDM) Roofing

- a. Refer to section 1.11 Warranty, existing roofing warranties are held by Firestone Building Products for the roof areas to the West and South of the addition. Coordinate new work as required to maintain warranties.
- b. Refer to section 2.3, O, delete the requirement for Liquid Coating
- c. Refer to section 3.4, H, add the word “mechanically” to the last sentence. “Loosely butt cover boards together and mechanically fasten to roof deck.”
- d. Refer to section 3.5, at contractor’s option; it is acceptable to Fully Adhere the membrane roofing in lieu of mechanically fasten the membrane. Insulation shall be mechanically fastened to coordinate with the acoustical roof decking.
- e. Refer to section 3.7, delete the requirement for liquid coating.

Item 1-7: Section 079200 – Joint Sealants

- a. Refer to 2.1, C, b, change Sonneborn Building Products Div., ChemRex, Inc. to BASF – Sonneborn Building Products.
- b. Refer to section 2.1, C, subject to compliance with the requirements of the section, add Sika Corp. as an acceptable manufacturer.
- c. Refer to 2.2, B, Polyurethane Sealant: modify text to “**Multi-part**, non-priming, self-leveling, gun-grade elastomeric polyurethane sealant, ASTM C920 Type **M**, Grade P, Class 25, Use T and M, Canadian Specification CAN/CGSB 19.13-M87, Classification C-1-40-B-N and C-1-25-B-N, No. 81028.
- d. Refer to 2.2, B, 1. Add to Basis of Design “or Sikaflex 1c SL, Sikaflex 2c SL, and Pecora Dynatrol II-SG.”
- e. Refer to 2.2, C, 1. Basis of Design shall be Sonneborn Sonolastic VLM-150 by BASF Building Systems or Sikaflex 15LM by Sika Corporation.
- f. Refer to 2.2, E, 1. Basis of Design shall be Pecora 860, Dow 999, and Sika GP.

Item 1-8: Section 084113 – Aluminum Entrances and Storefronts

Refer to section 2.1, A, 2, subject to compliance with the requirements of the section, add Tubelite as an acceptable manufacturer. (TI4000 Storefront, Entry Doors and 400 Curtain Wall Systems)

Item 1-9: Section 087100 – Finish Hardware

- a. Refer to section 2.1, E, subject to compliance with the requirements of the section, add Precision Exit Devices as an acceptable manufacturer. (Precision Apex 2000 series)
- b. Refer to section 2.1, H, subject to compliance with the requirements of the section, add Stanley Door Closers as an acceptable manufacturer. (Stanley D4550 series)
- c. Refer to 3.6 Hardware Schedule, Set 4.0, add door 108.1

Item 1-10: Section 093000 – Tile

Refer to section 2.5, A, 2. Change text to read:

Porcelain Ceramic Tile to Concrete: Model Reno-U, EU 100 (Stainless Steel, 304). Verify height required.

780-001-11

Item 1-11: Section 105114 – Metal Athletic Lockers

Refer to section 2.1, A, 2, subject to compliance with the requirements of the section, add Olympus Lockers as an acceptable manufacturer. (HDV series)

Item 1-12: Section 115213 – Projection Screens

This section has been revised and reissued as a part of this addendum.

Item 1-13: Section 116623 – Gymnasium Equipment

Refer to section 2.1, A, subject to compliance with the requirements of the section, add Performance Sports System / Gared (PSS) as an acceptable manufacturer.

Item 1-14: Section 142400 – Hydraulic Elevators

Refer to section 2.1, A, subject to compliance with the requirements of the section, add Schindler Elevator as an acceptable manufacturer. (330A Hydraulic)

Drawings

Item 1-15: Sheet A1.00 – Basement Floor Plan

- a. Refer to attached supplemental drawing SDA-001 for changes to drawing. Changes to layout of Men's Shower 016.
- b. Refer to attached supplemental drawing SDA-002 for changes to drawing. Changes to layout of Women's Shower 022.
- c. Refer to the Equipment Schedule, item SB-1 Scoreboard shall be Contractor provided and installed, not owner provided.

Item 1-16: Sheet A1.01 – First Floor Plan

- a. Refer to the Equipment Schedule, item SB-1 Scoreboard shall be Contractor provided and installed, not owner provided.
- b. Refer to the First Floor Plan, Move the projection screen (PS-1) to the wall to be wall mounted; See specifications for size.

Item 1-17: Sheet A1.10 – Basement Reflected Ceiling Plan

- a. Refer to attached supplemental drawing SDA-003 for changes to drawing. Changes to ceiling layout of Men's Shower 016.
- b. Refer to attached supplemental drawing SDA-004 for changes to drawing. Changes to ceiling layout of Women's Shower 022.

Item 1-18: Sheet A1.20 – Roof Plan

Refer to RTU-2 and RTU-5 located in the southwest corner of the new roof. Adjust the tapered insulation crickets as required to provide positive drainage around the rooftop air handling units

780-001-11

Item 1-19: Sheet A6.01 – Enlarged Floor Plans & Interior Elevations

- a. Refer to interior elevation #6 - 014 – North Wall; Change CT-1 to read CT-4.
- b. Refer to attached supplemental drawing SDA-005 for changes to drawing. Changes to layout of Men's Shower 016.
- c. Refer to attached supplemental drawing SDA-006 for changes to drawing. Changes to interior elevation of Men's Shower 016. Elevation #13 - 016 – West Wall; Elevation #14 - 016 – North Wall.

Item 1-20: Sheet A6.02 – Enlarged Floor Plans & Interior Elevations

- a. Refer to attached supplemental drawing SDA-007 for changes to drawing. Changes to layout of Women's Shower 022.
- b. Refer to attached supplemental drawing SDA-008 for changes to drawing. Changes to interior elevation of Women's Shower 022. Elevation #12 - 022 – South Wall; Elevation #13 - 022 – West Wall; Elevation #14 - 022 – North Wall.

Item 1-21: Sheet A6.30 – Door Schedule, Door Types, Frame Types & Window Frame Types

- a. Refer to attached supplemental drawing SDA-009 for changes to Door Schedule.
- b. Refer to Hollow Metal Frame Types, HMF-6 Change SCHED.WIDTH + 2'-0" to read SCHED. WIDTH + 1'-8"

INTERIORS

Drawings

Item 1-22: Sheet F1.00 – BASEMENT FLOOR FINISH PLAN

- a. Refer to attached supplemental drawing SDF-001 for changes to drawing. Changes to layout of Men's Shower 016.
- b. Refer to attached supplemental drawing SDF-002 for changes to drawing. Changes to layout of Women's Shower 022.

Item 1-23: Sheet F1.10 – ROOM FINISH SCHEDULE

- a. Refer to Finish Schedule. Change wall finish in Men's Shower 016 on North wall to PT-1/CT-2 reflecting changes shown on SDF-001 (revised showers layout).
- b. Refer to Finish Schedule. Change wall finish in Women's Shower 022 on North wall to PT-1/CT-2 reflecting changes shown on SDF-002 (revised showers layout).
- c. Refer to attached supplemental drawing SDF-003 for changes to drawing. Changes to transition edge TE-5 (CT to Concrete/VCT).

780-001-11

STRUCTURAL

Drawings

Item 1-24: Sheet S1.01-Footing & Foundation Plan, Column & Footing Schedule & Base Plate Details

Refer to attached supplemental drawing SDS-001 for additional footings at showers.

MECHANICAL

Drawings

Item 1-25: Sheet M1.00 – Basement HVAC Plan

Refer to attached supplemental drawing SDM-001 for changes exhaust duct serving Women's Shower 022.

Item 1-26: Sheet M1.01 – First Floor HVAC Plan

Refer to attached supplemental drawing SDM-002 for flue and combustion air for additional water heater.

Item 1-27: Sheet M1.03 – Roof HVAC Plan

Refer to attached supplemental drawing SDM-003 for flue and combustion air for additional water heater and revised gas piping sizes.

Item 1-28: Sheet M2.00 – Basement Underfloor Piping Plan

Refer to attached supplemental drawing SDM-004 for revised piping for additional showers.

Item 1-29: Sheet M2.01 – Basement Piping Plan

Refer to attached supplemental drawing SDM-005 for revised piping for additional showers and pipe size changes.

Item 1-30: Sheet M2.02 – First Floor Piping Plan

Refer to attached supplemental drawing SDM-006 for revised piping and sizes for additional water heater.

Item 1-31: Sheet M4.01 – Plumbing Riser Diagrams

Refer to attached supplemental drawing SDM-007 for revised gas piping sizes for additional water heater.

Item 1-32: Sheet M4.01 – Plumbing Riser Diagrams

Refer to attached supplemental drawing SDM-008 for revised waste & vent piping for additional showers.

780-001-11

Item 1-33: Sheet M4.02 – Plumbing Riser Diagrams

Refer to attached supplemental drawing SDM-009 for revised water piping for additional showers and water heater.

Item 1-34: Sheet M6.01 – Mechanical Details

Refer to attached supplemental drawing SDM-010 for revised water heater piping detail for additional water heater.

Item 1-35: Sheet M7.02 – Mechanical Schedules

Unit Heater Schedule, Condensing Unit Schedule and Furnace schedule shall be changed to Manufacturer or Equivalent.

Item 1-36: Sheet M7.02 – Mechanical Schedules

Refer to attached supplemental drawing SDM-011 for revised plumbing fixture schedule. GWH-2 was added and DET-1 was revised.

ELECTRICAL

Drawings

Item 1-37: Sheet E1.00 – Basement Lighting Plan

Refer to attached supplemental drawing SDE-001 for changes to lighting serving Men's Shower 016.

Item 1-38: Sheet E1.01 – First Floor Lighting Plan

Refer to attached supplemental drawing SDE-002 for changes to lighting serving Women's Shower 022.

Item 1-39: Sheet E2.00 – Basement Power & Auxiliary Systems Plan

Refer to attached supplemental drawing SDE-003 for changes to receptacle power serving Men's Shower 016.

Item 1-40: Sheet E2.01 – First Floor Power & Auxiliary Systems Plan

Refer to attached supplemental drawing SDE-004 for changes to receptacle power serving Women's Shower 022.

END OF ADDENDUM NO. 1

780-001-11

SECTION 115213 - PROJECTION SCREENS

PART 1 - GENERAL

1.1 RELATED DOCUMENTS

- A. Drawings and general provisions of the Contract, including General and Supplementary Conditions and Division 01 Specification Sections, apply to this Section.

1.2 SUMMARY

- A. Section Includes:
 - 1. Manually operated projection screens.
- B. Related Sections:
 - 1. Division 05 Section "Metal Fabrications" for metal support framing for projection screens.
 - 2. Division 06 Section "Rough Carpentry" for wood backing for screen installation.

1.3 DEFINITIONS

- A. Gain of Front-Projection Screens: Ratio of light reflected from screen material to that reflected perpendicularly from a magnesium carbonate surface as determined per SMPTE RP 94.
- B. Half-Gain Angle: The angle, measured from the axis of the screen surface to the most central position on a perpendicular plane through the horizontal centerline of the screen where the gain is half of the peak gain.

1.4 SUBMITTALS

- A. Product Data: For each type of product indicated.
- B. Shop Drawings: For projection screens. Show layouts and type of projection screens. Include the following:
 - 1. For manually operated projection screens:
 - a. Drop lengths.
 - b. Anchorage details.
 - c. Accessories.
- C. Samples for Initial Selection: For finishes of surface-mounted screen cases.
- D. Maintenance Data: For projection screens to include in maintenance manuals.

PROJECTION SCREENS

115213 - 1



780-001-11

1.5 QUALITY ASSURANCE

- A. Source Limitations for Projection Screens: Obtain projection screens from single manufacturer. Obtain accessories, including necessary mounting hardware, from screen manufacturer.

1.6 DELIVERY, STORAGE, AND HANDLING

- A. Environmental Limitations: Do not deliver or install projection screens until spaces are enclosed and weather-tight, wet work in spaces is complete and dry, and temporary HVAC system is operating and maintaining ambient temperature and humidity conditions at occupancy levels during the remainder of the construction period.

PART 2 - PRODUCTS

2.1 MANUALLY OPERATED PROJECTION SCREENS

- A. General: Manufacturer's standard spring-roller-operated units, consisting of case, screen, mounting accessories, and other components necessary for a complete installation.
 - 1. Screen Mounting: Top edge securely anchored to a **3-inch (75-mm)** diameter, rigid steel roller; bottom edge formed into a pocket holding a tubular metal slat, with ends of slat protected by plastic caps, and with a saddle and pull attached to slat by screws.
 - 2. Tab Tensioning: Provide units that have a durable low-stretch cord, such as braided polyester, on each side of screen connected to edge of screen by tabs to pull screen flat horizontally. **In lieu of tab tensioning, screens may be constructed from vinyl-coated screen cloth that contains horizontal stiffening monofilaments to resist edge curling.**
- B. Surface-Mounted, Metal-Encased, Manually Operated Screens: Units designed and fabricated for surface mounting on wall or ceiling, fabricated from formed-steel sheet not less than **0.027 inch (0.7 mm)** thick or from aluminum extrusions; with flat back design and vinyl covering or baked-enamel finish. Provide units with matching end caps and concealed mounting.
 - 1. Products: Subject to compliance with requirements, provide one of the following:
 - a. Bretford, Inc.; Series 500.
 - b. Da-Lite Screen Company; Model C with CSR.
 - c. Draper Inc.; Luma 2 with AR.
 - d. Stewart Filmscreen Corporation; Luxus Communicator.

2.2 FRONT-PROJECTION SCREEN MATERIAL

- A. Matte-White Viewing Surface: Peak gain not less than 0.9, and gain not less than 0.8 at an angle of 50 degrees from the axis of the screen surface.
 - 1. Products: Subject to compliance with requirements, provide one of the following:

780-001-11

- a. BEI Audio-Visual Products; Matte White.
 - b. Bretford, Inc.; Matte White.
 - c. Da-Lite Screen Company; Matte White.
 - d. Draper Inc.; Fiberglass Matte White.
- B. Material: Vinyl-coated, glass-fiber fabric.
- C. Mildew-Resistance Rating: 0 or 1 when tested according to ASTM G 21.
- D. Flame Resistance: Passes NFPA 701.
- E. Flame-Spread Index: Not greater than 75 when tested according to ASTM E 84.
- F. Seamless Construction: Provide screens, in sizes indicated, without seams.
- G. Edge Treatment: Black masking borders.
- H. Size of Viewing Surface: **72" H by 116" W**.
- I. Provide extra drop length of dimensions and at locations indicated.
1. Color: Black.

2.3 PROJECTION SCREEN SCHEDULE

- A. PS-1 Manually Operated, Front-Projection Screen Type: Wall-mounted with Brackets, metal encased (see sheet A1.01).
1. Screen Surface: Matte white.
 2. Viewing Surface Size: **72 by 116 inches**.
 3. Extra Drop Length: As needed at top of screen for bottom of screen to be **36 inches (900 mm)** above floor.

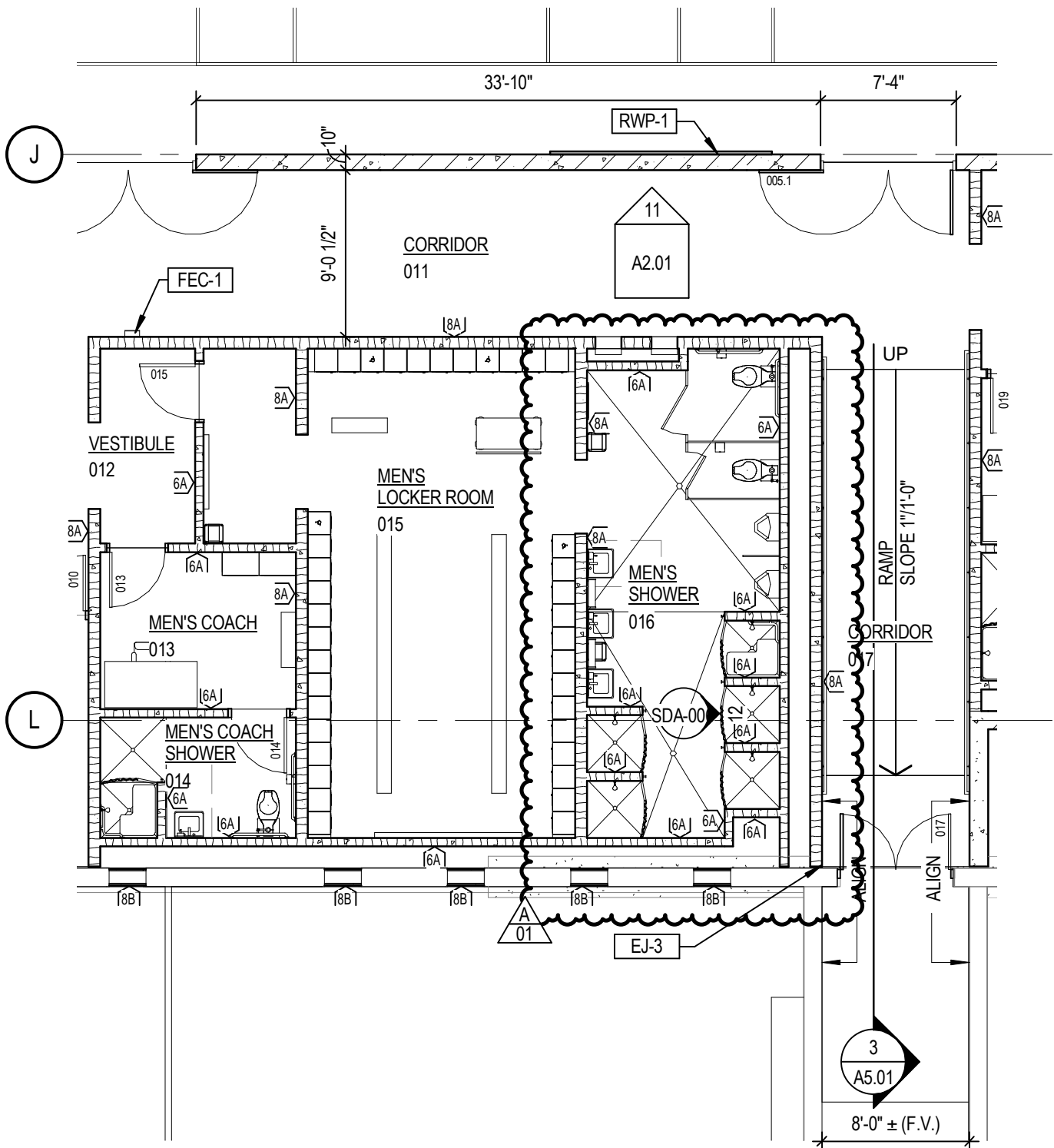
PART 3 - EXECUTION

3.1 FRONT-PROJECTION SCREEN INSTALLATION

- A. Install front-projection screens at locations indicated to comply with screen manufacturer's written instructions.
- B. Install front-projection screens with screen cases in position and in relation to adjoining construction indicated. Securely anchor to supporting substrate in a manner that produces a smoothly operating screen with vertical edges plumb and viewing surface flat when screen is lowered.
1. Test manually operated units to verify that screen-operating components are in optimum functioning condition.

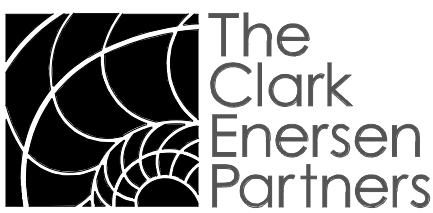
780-001-11

END OF SECTION 115213



PARTIAL BASEMENT FLOOR PLAN

SCALE: 1/8" = 1'-0"

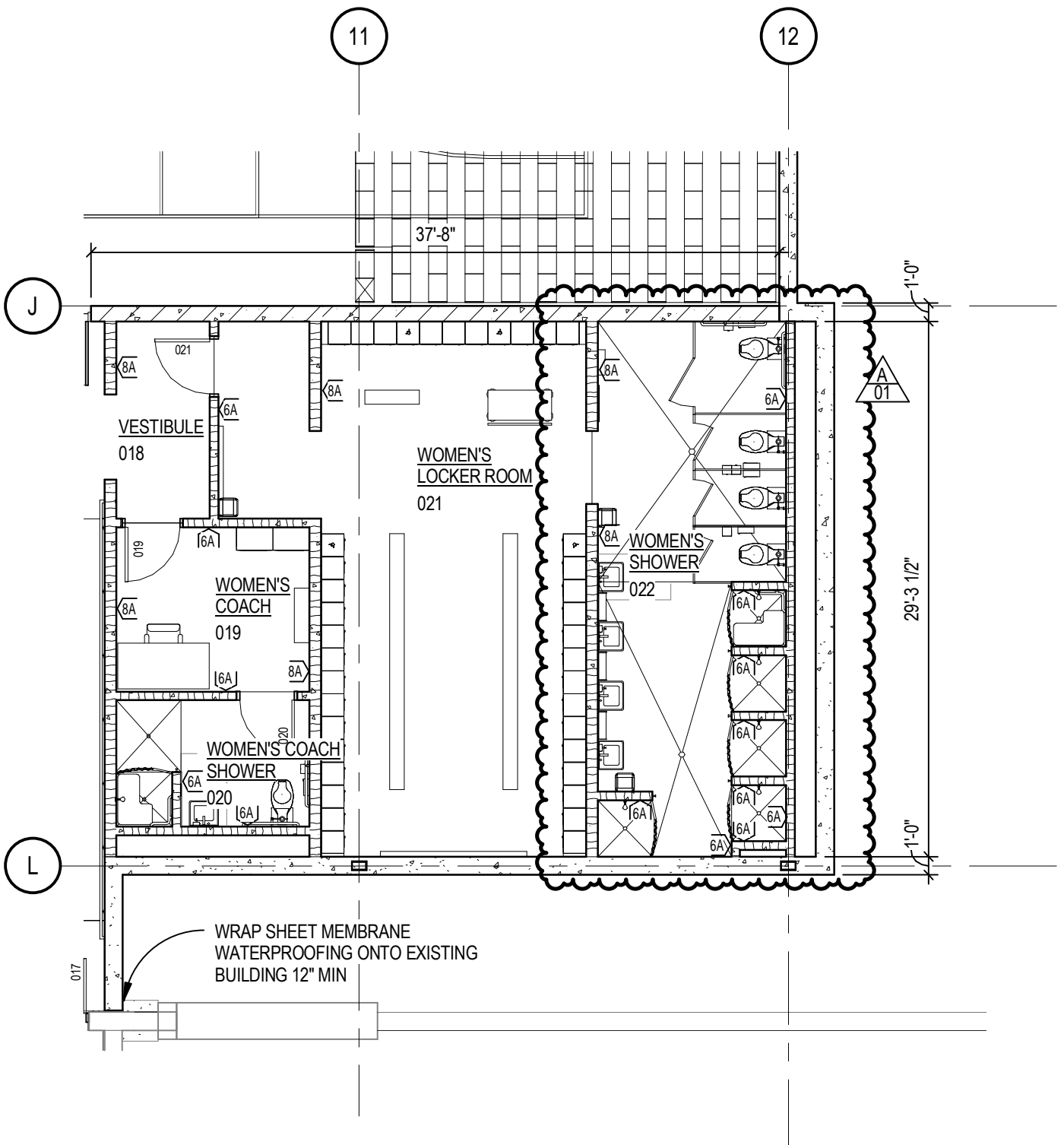


The Clark Enersen Partners

Architecture + Landscape Architecture + Engineering + Interiors
 1010 Lincoln Mall, Suite 200 Lincoln, NE 68508-2883
 402 477.9291 Fax 402 477.6542
 Kansas City, MO Overland Park, KS www.clarkenersen.com

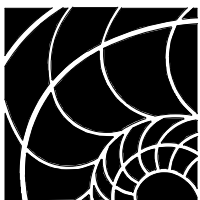
Freeman Public Schools
 Adams, Nebraska
 TCEP No.: 780-001-11

Addendum #01
 Supplemental Drawing: SDA-001
 Revision of Sheet: A1.00
 Date: 09/26/12



PARTIAL BASEMENT FLOOR PLAN

SCALE: 1/8" = 1'-0"

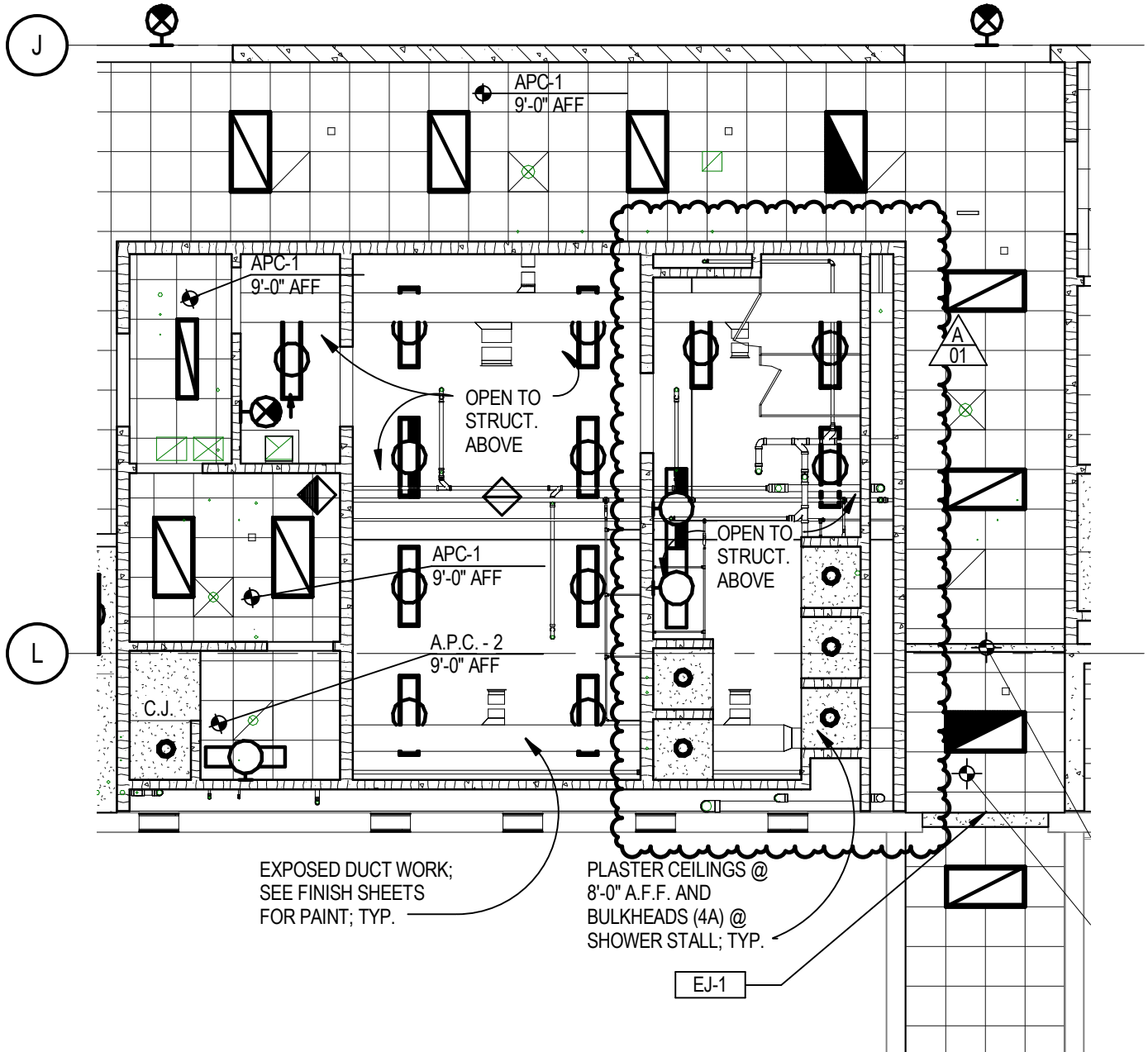


**The
Clark
Enersen
Partners**

Architecture + Landscape Architecture + Engineering + Interiors
 1010 Lincoln Mall, Suite 200 Lincoln, NE 68508-2883
 402 477.9291 Fax 402 477.6542
 Kansas City, MO Overland Park, KS www.clarkenersen.com

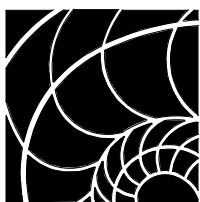
Freeman Public Schools
 Adams, Nebraska
 TCEP No.: 780-001-11

Addendum #01
 Supplemental Drawing: SDA-002
 Revision of Sheet: A1.00
 Date: 09/26/12



PARTIAL BASEMENT REFLECTED CEILING PLAN

SCALE: 1/8" = 1'-0"

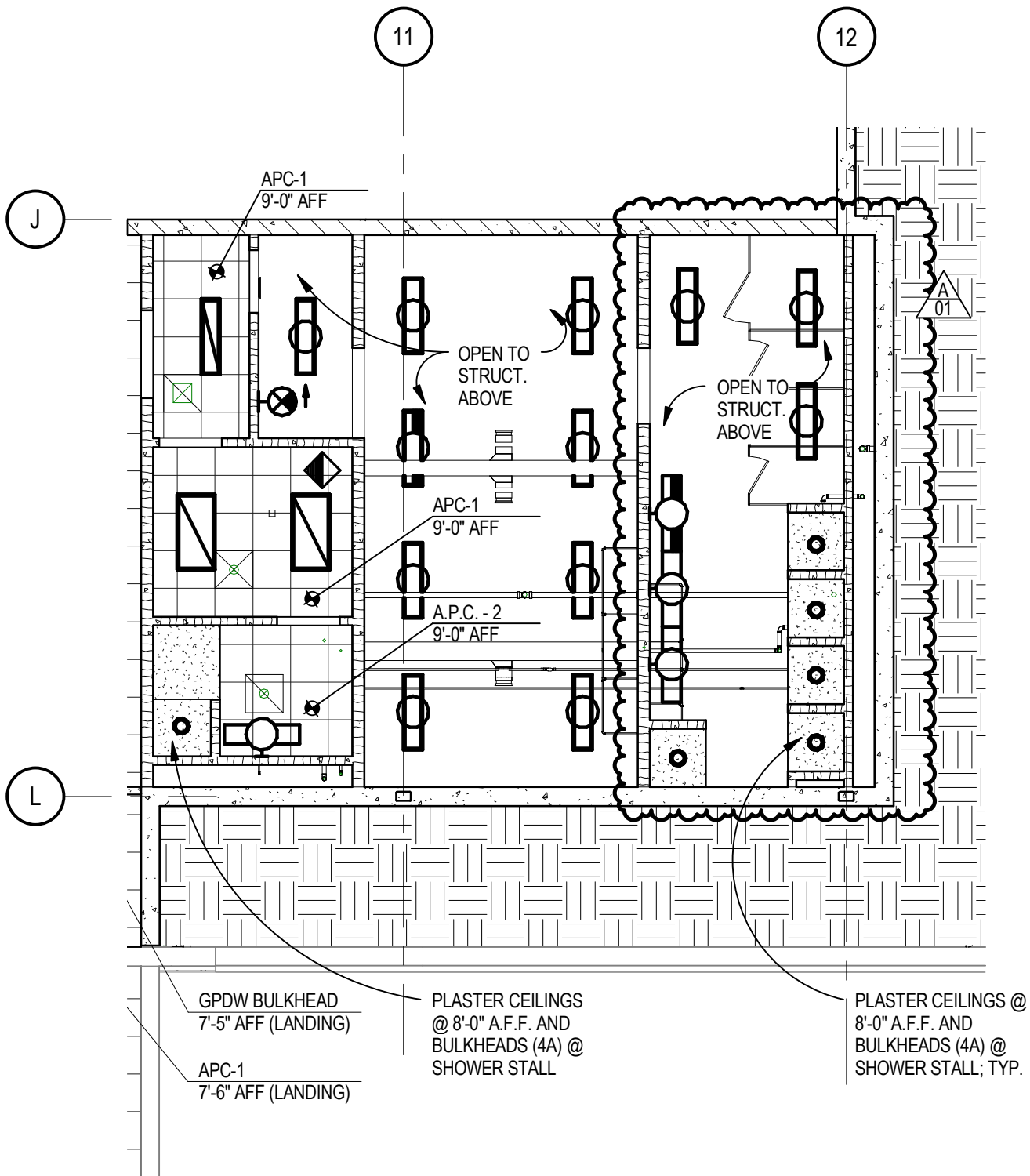


**The
Clark
Enersen
Partners**

Architecture + Landscape Architecture + Engineering + Interiors
 1010 Lincoln Mall, Suite 200 Lincoln, NE 68508-2883
 402 477.9291 Fax 402 477.6542
 Kansas City, MO Overland Park, KS www.clarkenersen.com

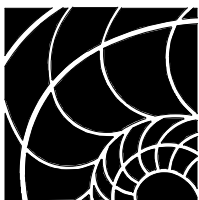
Freeman Public Schools
 Adams, Nebraska
 TCEP No.: 780-001-11

Addendum #01
 Supplemental Drawing: SDA-003
 Revision of Sheet: A1.10
 Date: 09/26/12



PARTIAL BASEMENT REFLECTED CEILING PLAN

SCALE: 1/8" = 1'-0"

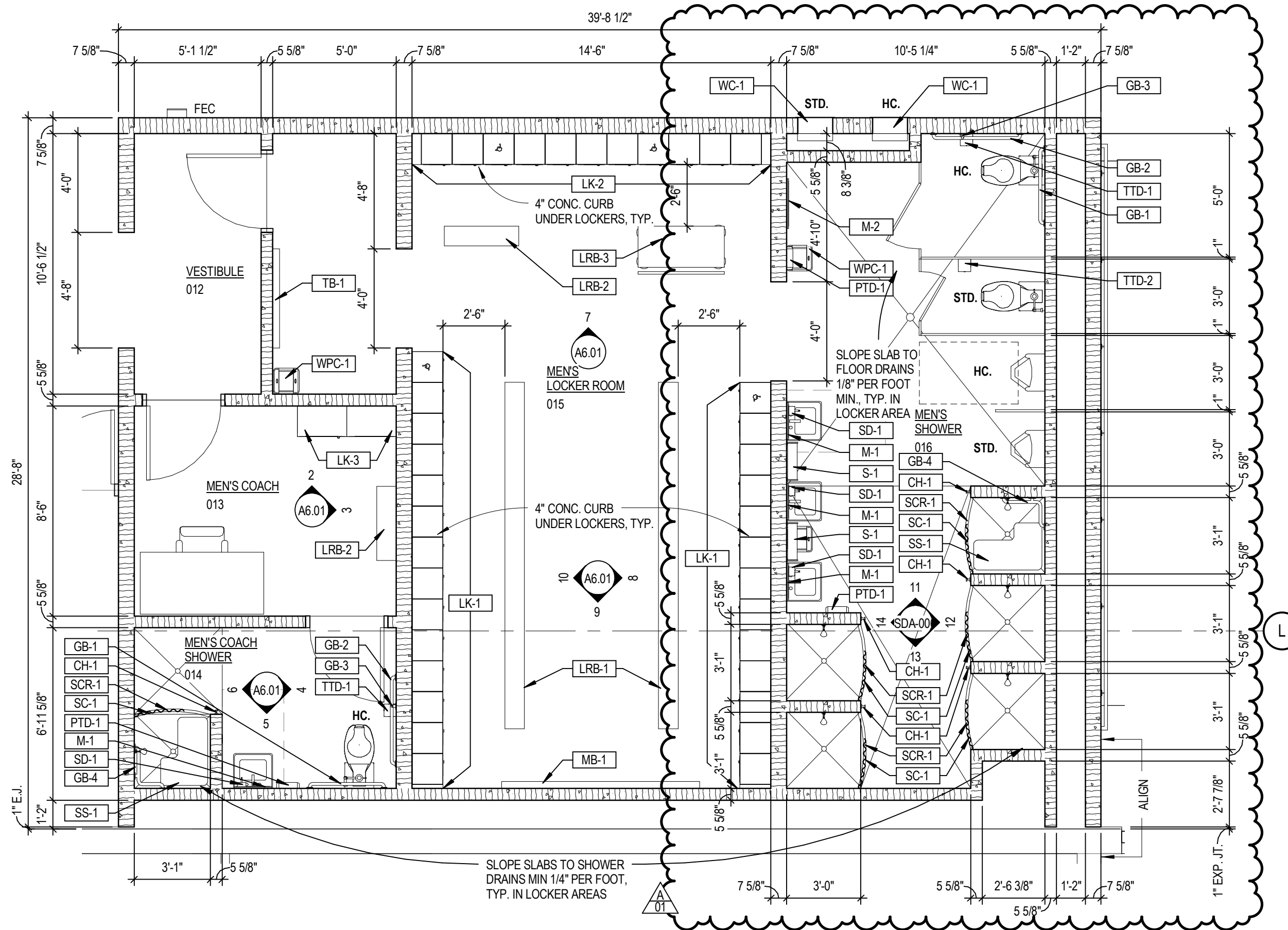


The
Clark
Enersen
Partners

Architecture + Landscape Architecture + Engineering + Interiors
1010 Lincoln Mall, Suite 200 Lincoln, NE 68508-2883
402 477.9291 Fax 402 477.6542
Kansas City, MO Overland Park, KS www.clarkenersen.com

Freeman Public Schools
Adams, Nebraska
TCEP No.: 780-001-11

Addendum #01
Supplemental Drawing: SDA-004
Revision of Sheet: A1.10
Date: 09/26/12

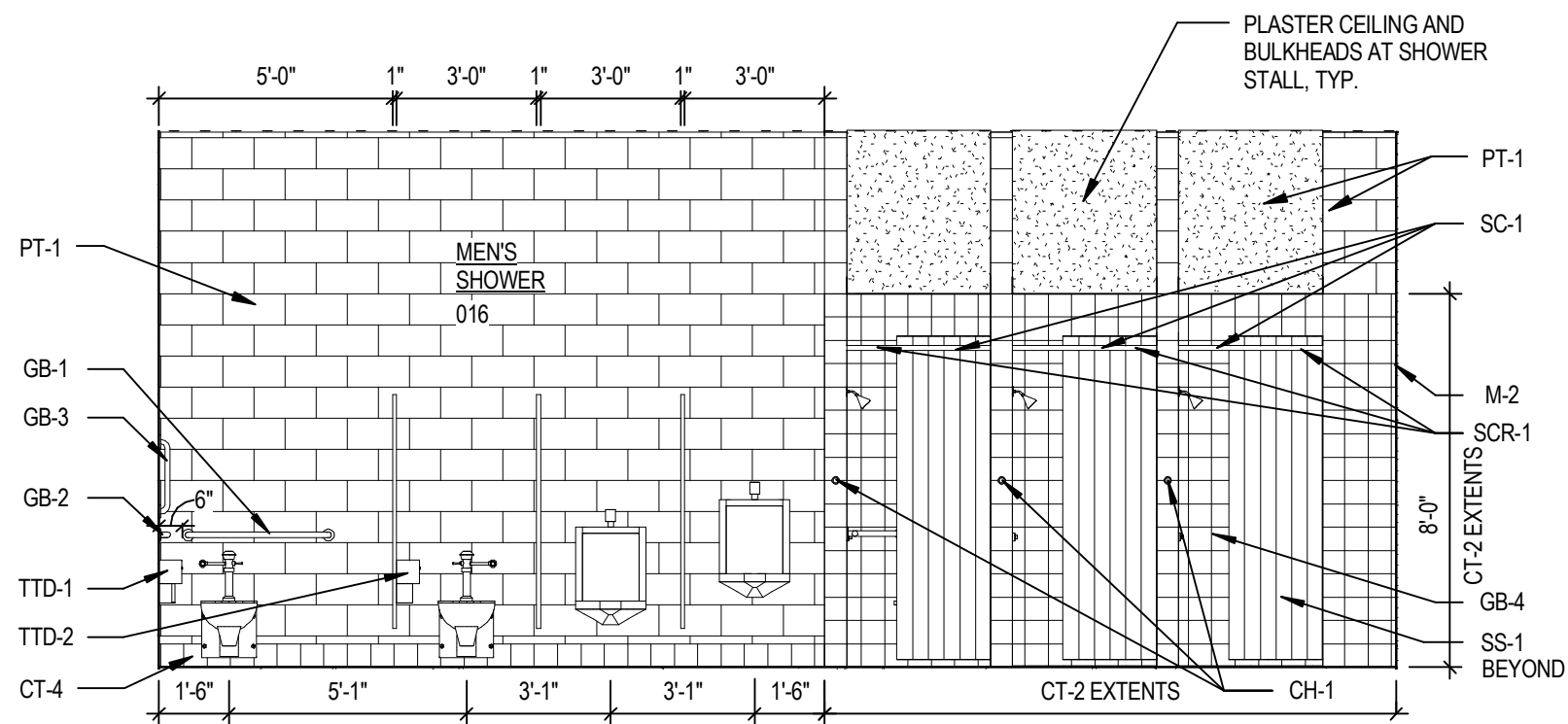


Freeman Public Schools
Adams, Nebraska
TCEP No.: 780-001-11

Addendum #01
Supplemental Drawing: SDA-005
Revision of Sheet: A6.01
Date: 09/26/12

1 ENLARGED LOCKER ROOM PLAN

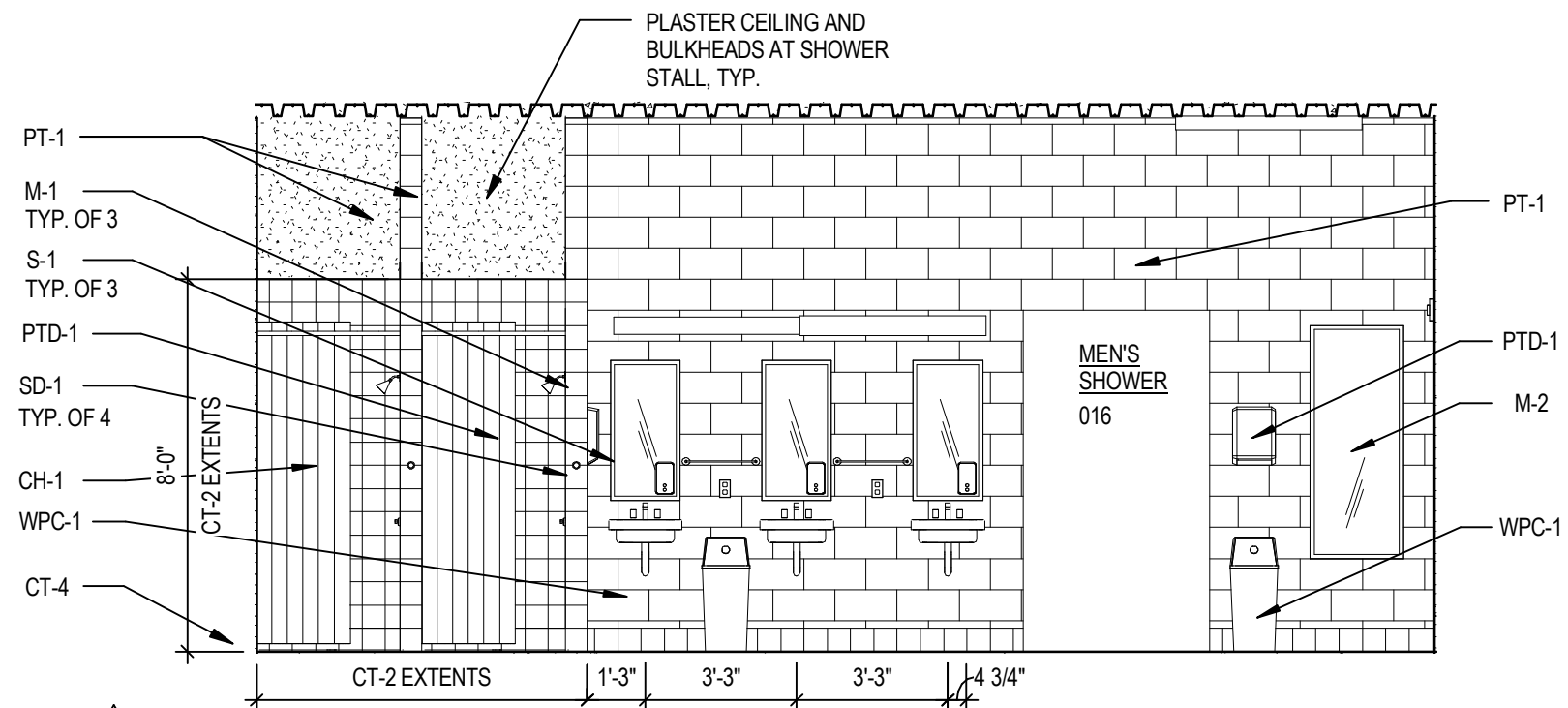
SCALE: 1/4" = 1'-0"



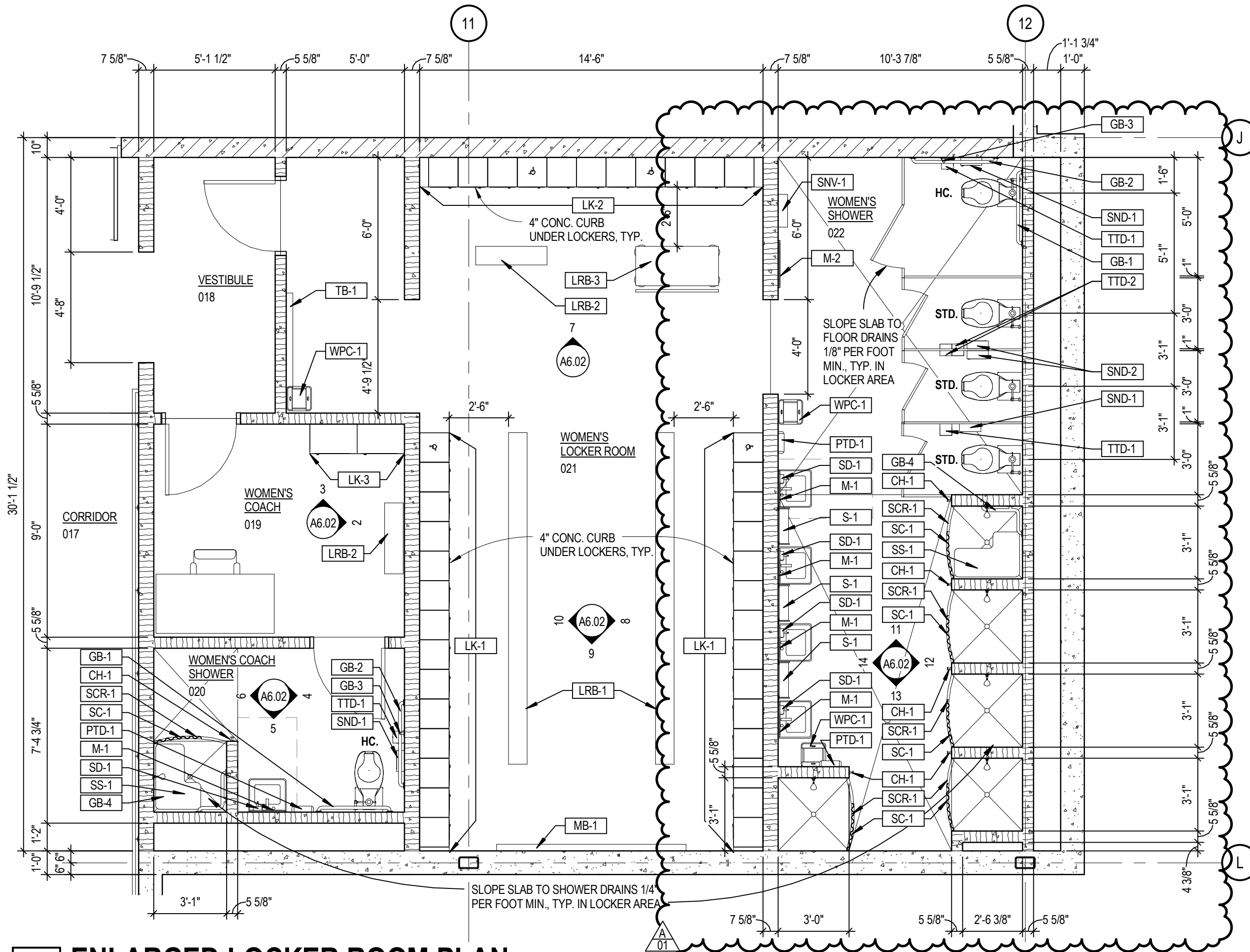
12 016 - SOUTH WALL
SCALE: 1/4" = 1'-0"



13 016 - WEST WALL
SCALE: 1/4" = 1'-0"



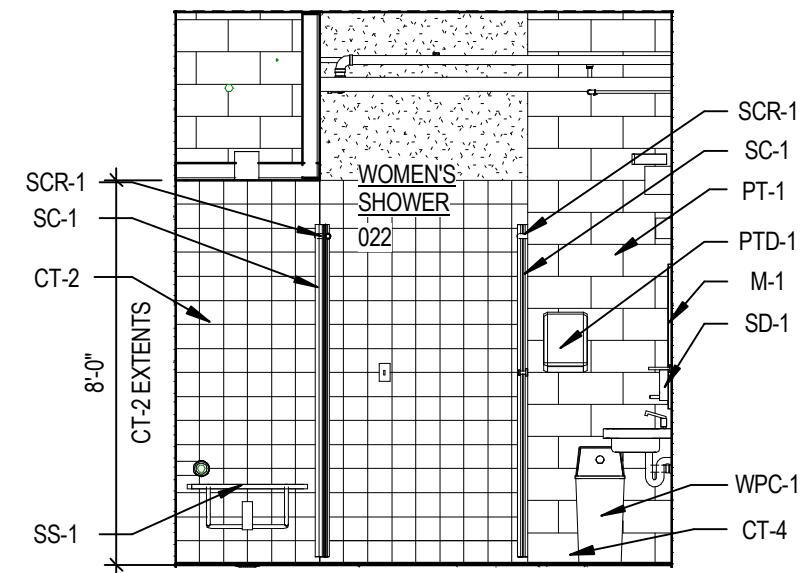
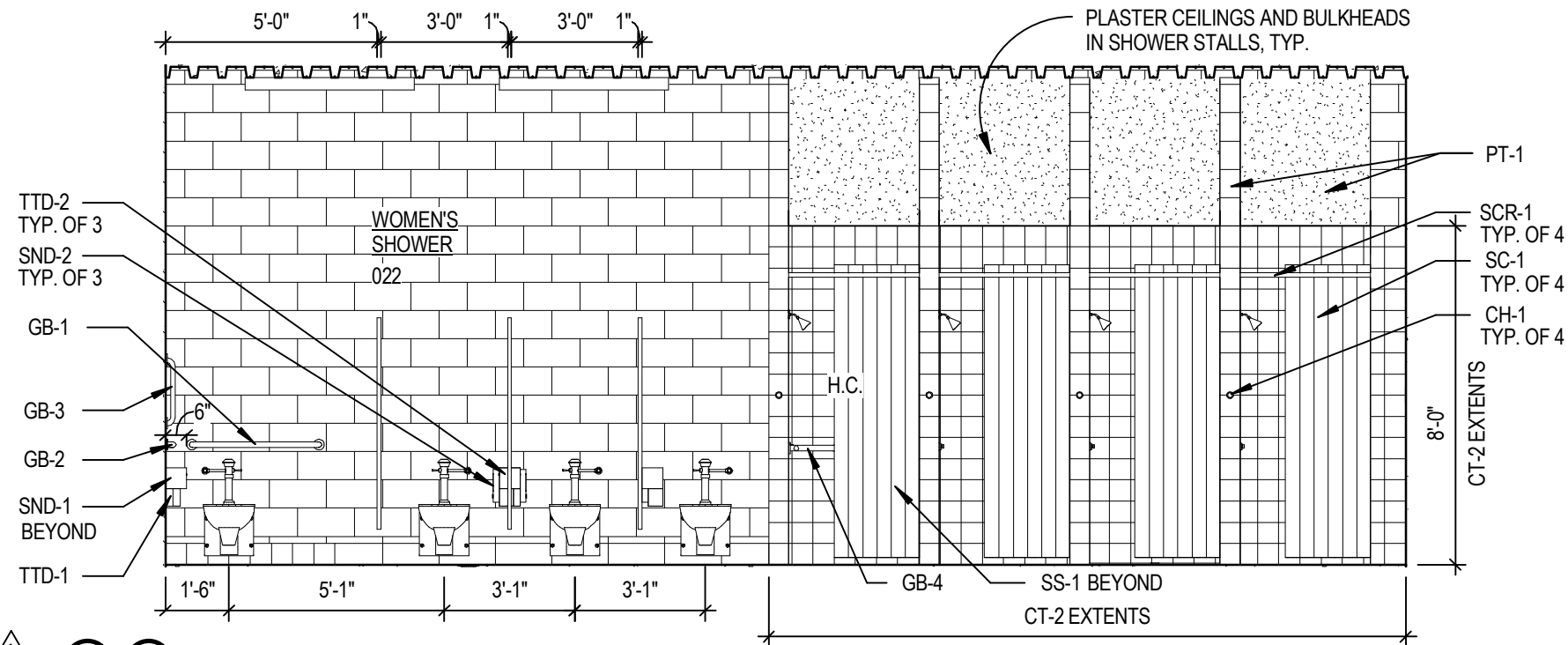
14 016 - NORTH WALL
SCALE: 1/4" = 1'-0"



1 ENLARGED LOCKER ROOM PLAN
SCALE: 1/4" = 1'-0"

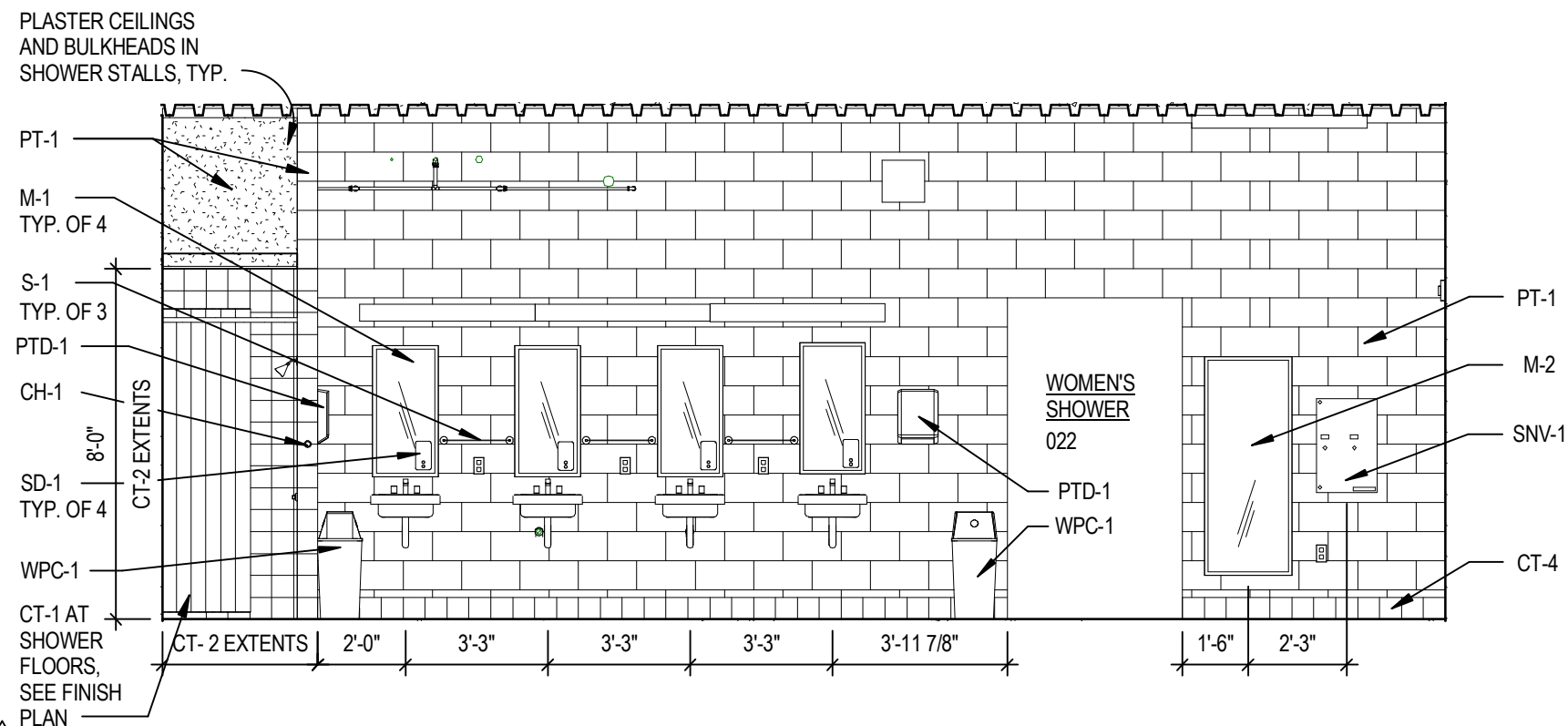
Freeman Public Schools
Adams, Nebraska
TCEP No.: 780-001-11

Addendum #01
Supplemental Drawing: SDA-007
Revision of Sheet: A6.02
Date: 09/26/12



12 022 - SOUTH WALL
SCALE: 1/4" = 1'-0"

13 022 - WEST WALL
SCALE: 1/4" = 1'-0"

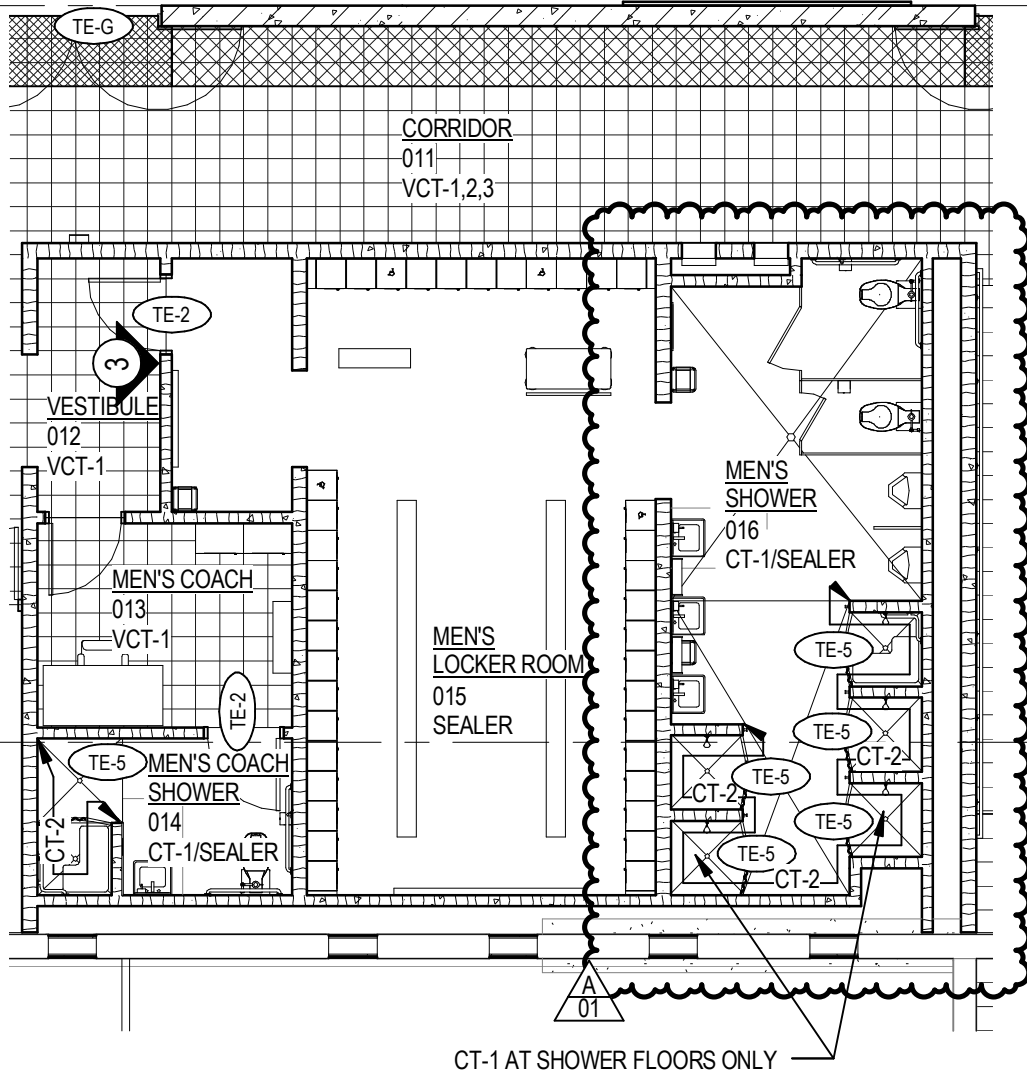


14 022 - NORTH WALL
SCALE: 1/4" = 1'-0"

DOOR SCHEDULE

DOOR NO.	DOOR					FRAME		FIRE RATING	HARDWARE	COMMENTS
	PAIR	WIDTH	HEIGHT	TYPE	FINISH	TYPE	FINISH			
001	PAIR	7'-0"	7'-0"	ALD-1	CA	ALF-3	CA		HW-1.0	CARD READER
001.1	PAIR	3'-6"	7'-0"	WD-3	CA	HMF-3	PT-4		HW-16.0	
002		3'-0"	7'-0"	WD-3	STN-1	HMF-6	PT-4		HW-5.0	
003	PAIR	3'-0"	7'-0"	WD-1	STN-1	HMF-3	PT-4		HW-6.0	
004	PAIR	7'-0"	7'-0"	ALD-1	STN-1	ALF-3	CA		HW-15.0	
004.1	PAIR	3'-6"	7'-0"	WD-3	STN-1	HMF-3	PT-4		HW-16.0	
005	PAIR	3'-6"	7'-0"	WD-3	STN-1	HMF-4	PT-4	20 MIN	HW-7.0	180° SWING 2 LEAFS
005.1	PAIR	3'-6"	7'-0"	WD-3	STN-1	HMF-4	PT-4	20 MIN	HW-7.0	180° SWING 1 LEAF
006	PAIR	7'-0"	7'-0"	ALD-1	CA	ALF-2	CA		HW-2.0	ADA ACCESS; CARD READER
006.1	PAIR	7'-0"	7'-0"	ALD-1	CA	ALF-2	CA		HW-15.0	
006.2	PAIR	7'-0"	7'-0"	ALD-1	CA	ALF-2	CA		HW-17.0	ADA ACCESS
006.3	PAIR	7'-0"	7'-0"	ALD-1	CA	ALF-2	CA		HW-3.0	
007		3'-8"	7'-0"	ALD-1	CA	ALF-1	CA		HW-4.0	EXIT ONLY
007.1		3'-8"	7'-0"	WD-2	STN-1	HMF-2	PT-4	45 MIN.	HW-8.0	HOLD OPEN
007.2		3'-8"	7'-0"	WD-2	STN-1	HMF-2	PT-4	45 MIN.	HW-8.0	HOLD OPEN
010		3'-0"	7'-0"	WD-1	STN-1	HMF-2	PT-4	45 MIN.	HW-9.0	
013		3'-0"	7'-0"	WD-1	STN-1	HMF-2	PT-4	20 MIN	HW-5.0	
014		3'-0"	7'-0"	WD-1	STN-1	HMF-2	PT-4		HW-10.0	
015		3'-0"	7'-0"	WD-1	STN-1	HMF-2	PT-4	20 MIN	HW-11.0	
017	PAIR	3'-0"	7'-0"	WD-3	STN-1	HMF-3	PT-4		HW-12.0	HOLD OPENS
019		3'-0"	7'-0"	WD-1	STN-1	HMF-2	PT-4	20 MIN	HW-5.0	
020		3'-0"	7'-0"	WD-1	STN-1	HMF-2	PT-4		HW-10.0	
021		3'-0"	7'-0"	WD-1	STN-1	HMF-2	PT-4	20 MIN	HW-11.0	
101		3'-0"	7'-0"	WD-1	STN-1	HMF-2	PT-4	45 MIN.	HW-9.0	
103		3'-0"	7'-0"	WD-1	STN-1	HMF-2	PT-4	20 MIN	HW-13.0	
107	PAIR	3'-0"	7'-0"	WD-3	STN-1	HMF-5	PT-4	90 MIN.	HW-12.0	HOLD OPEN
108		3'-0"	7'-0"	WD-1	STN-1	HMF-2	PT-4	20 MIN	HW-14.0	
108.1		3'-0"	7'-0"	ALD-1	CA	ALF-10	CA		HW-4.0	EXIT ONLY
110		3'-0"	7'-0"	WD-2	STN-1	HMF-2	PT-4		HW-5.0	
111	PAIR	3'-0"	7'-0"	WD-3	STN-1	HMF-5	PT-4	90 MIN.	HW-12.0	HOLD OPEN

J

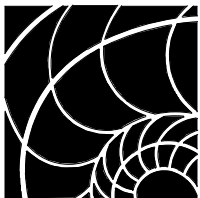


L



PARTIAL BASEMENT FLOOR PLAN

SCALE: 1/8" = 1'-0"

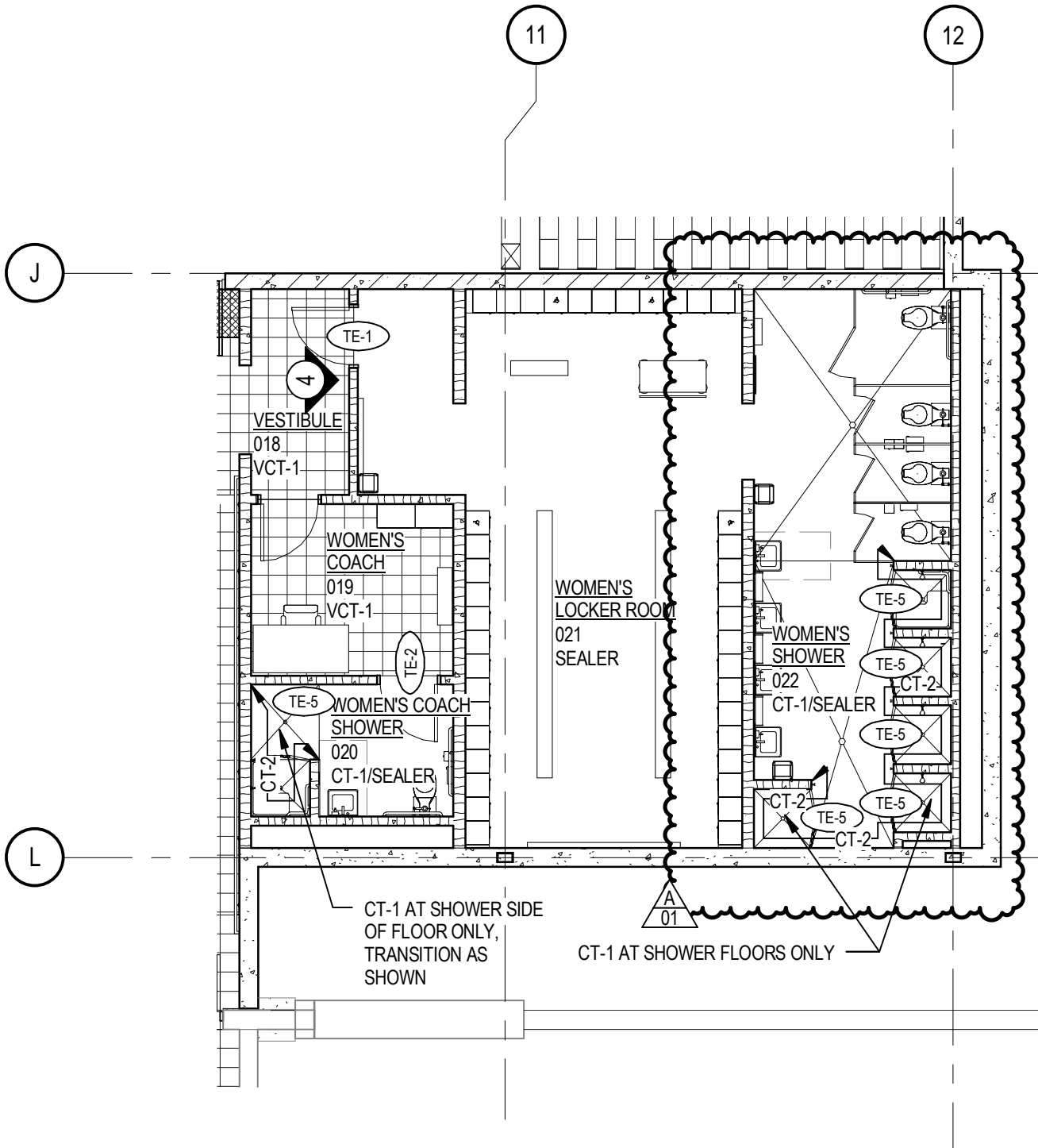


The
Clark
Enersen
Partners

Architecture + Landscape Architecture + Engineering + Interiors
1010 Lincoln Mall, Suite 200 Lincoln, NE 68508-2883
402 477.9291 Fax 402 477.6542
Kansas City, MO Overland Park, KS www.clarkenersen.com

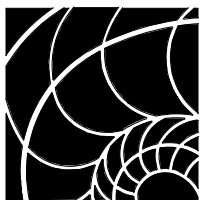
Freeman Public Schools
Adams, Nebraska
TCEP No.: 780-001-11

Addendum #01
Supplemental Drawing: SDF-001
Revision of Sheet: F1.00
Date: 09/26/12



PARTIAL BASEMENT FLOOR PLAN

SCALE: 1/8" = 1'-0"

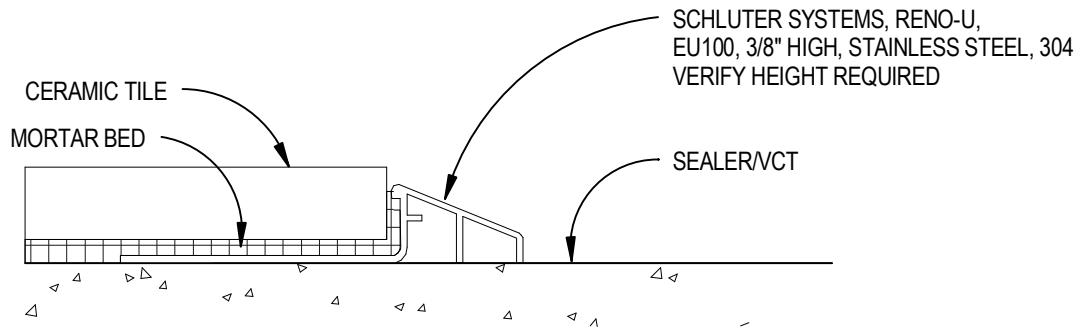


**The
Clark
Enersen
Partners**

Architecture + Landscape Architecture + Engineering + Interiors
 1010 Lincoln Mall, Suite 200 Lincoln, NE 68508-2883
 402 477.9291 Fax 402 477.6542
 Kansas City, MO Overland Park, KS www.clarkenersen.com

Freeman Public Schools
 Adams, Nebraska
 TCEP No.: 780-001-11

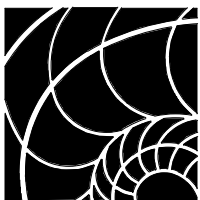
Addendum #01
 Supplemental Drawing: SDF-002
 Revision of Sheet: F1.00
 Date: 09/26/12



A
01

5 **TE-5 CT to CONC/VCT**

SCALE: 12" = 1'-0"

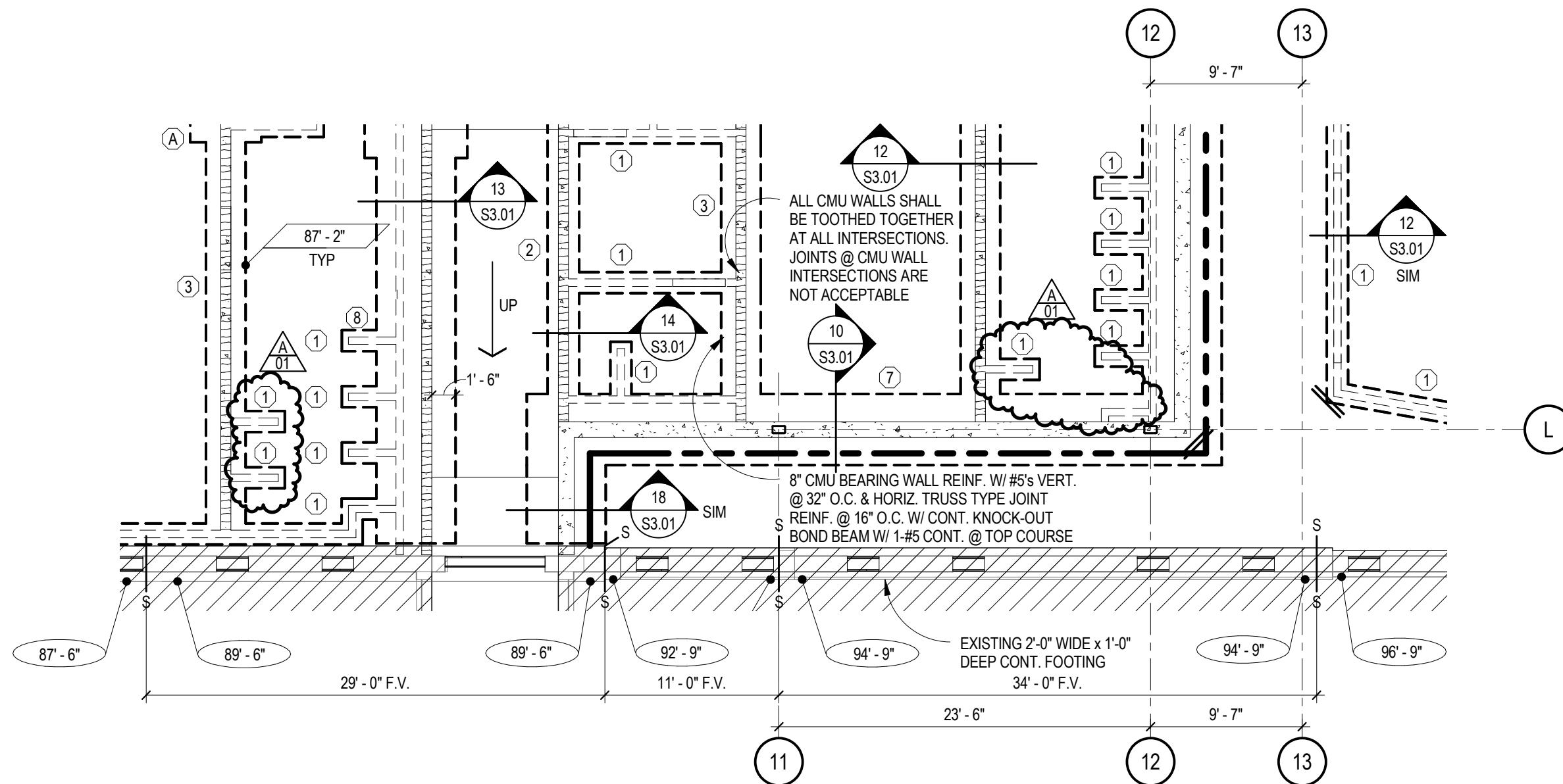


**The
Clark
Enersen
Partners**

Architecture + Landscape Architecture + Engineering + Interiors
 1010 Lincoln Mall, Suite 200 Lincoln, NE 68508-2883
 402 477.9291 Fax 402 477.6542
 Kansas City, MO Overland Park, KS www.clarkenersen.com

Freeman Public Schools
 Adams, Nebraska
 TCEP No.: 780-001-11

Addendum #01
 Supplemental Drawing: SDF-003
 Revision of Sheet: F1.10
 Date: 09/26/12

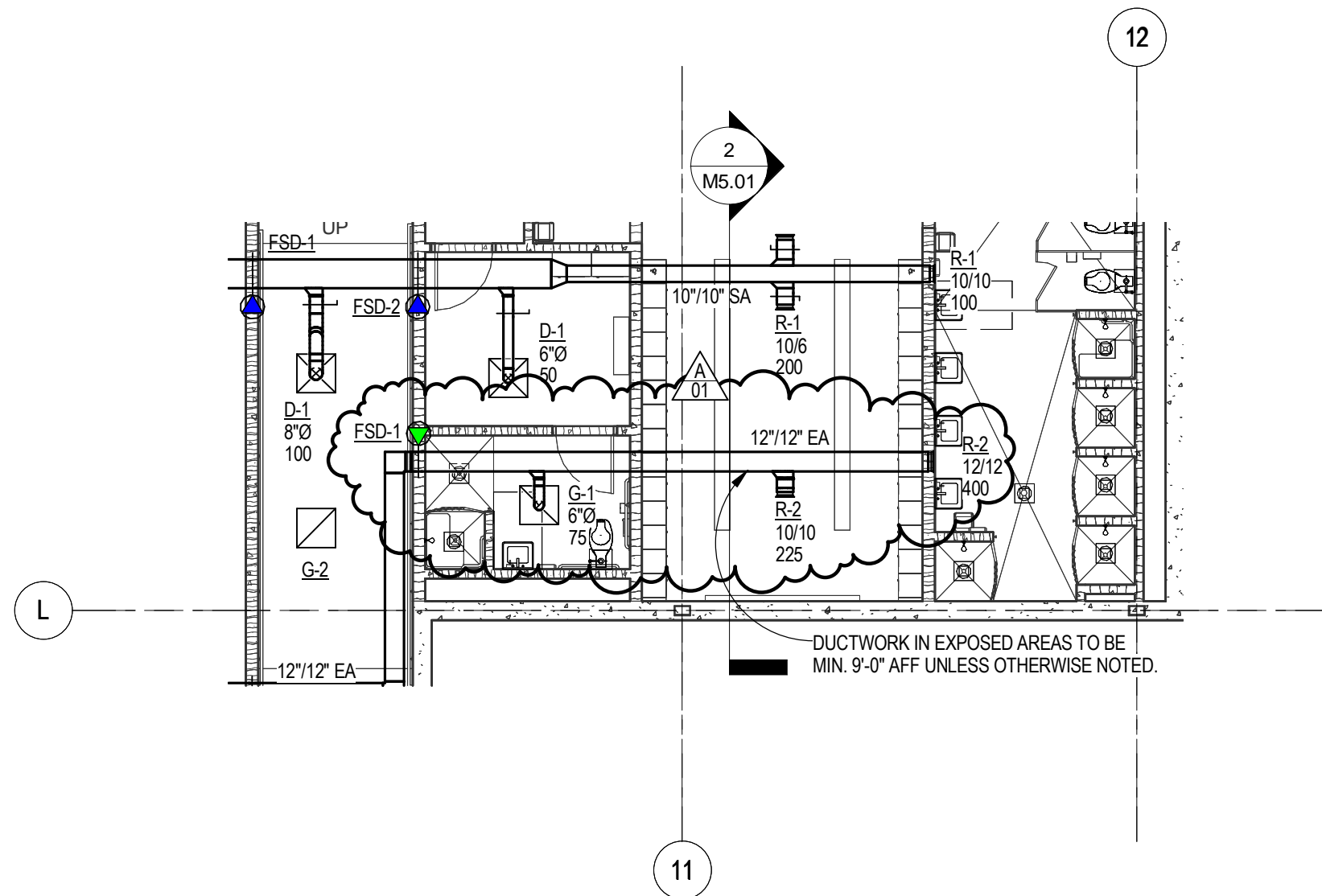


PARTIAL FOOTING & FOUNDATION PLAN

SCALE: 1/8" = 1'-0"

Freeman Public Schools
Project City and State
TCEP No.: 780-001-11

Addendum #01
Supplemental Drawing: SDS-001
Revision of Sheet: S1.01
Date: 09/26/12

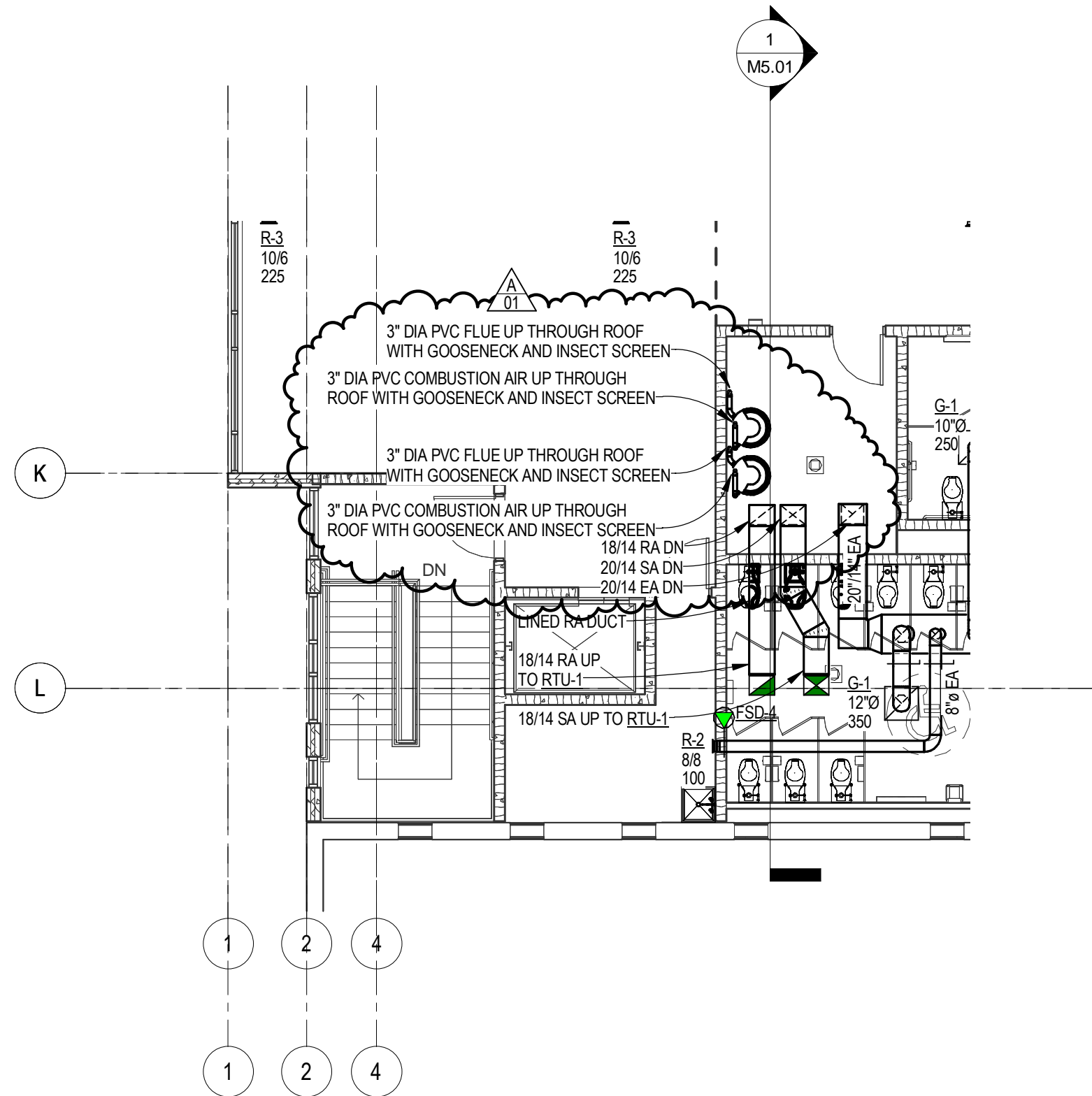


BASEMENT HVAC PLAN

SCALE: 1/8" = 1'-0"

Freeman Public Schools
Adams, Nebraska 68301
TCEP No.: 780-001-11

Addendum #01
Supplemental Drawing: SDM-001
Revision of Sheet: M1.00
Date: 09/26/12

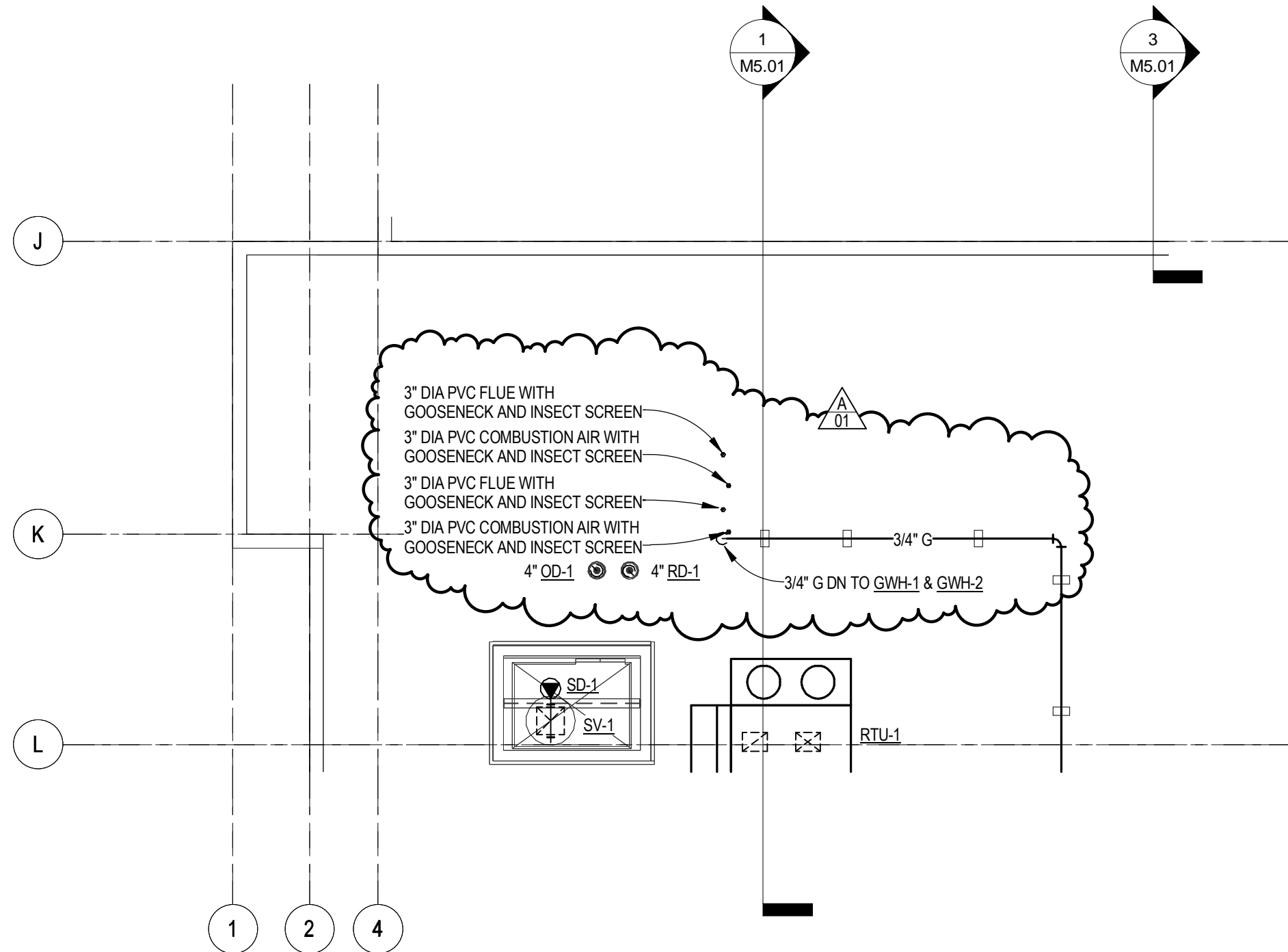


FIRST FLOOR HVAC PLAN

SCALE: 1/8" = 1'-0"

Freeman Public Schools
Adams, Nebraska 68301
TCEP No.: 780-001-11

Addendum #01
Supplemental Drawing: SDM-002
Revision of Sheet: M1.01
Date: 09/26/12

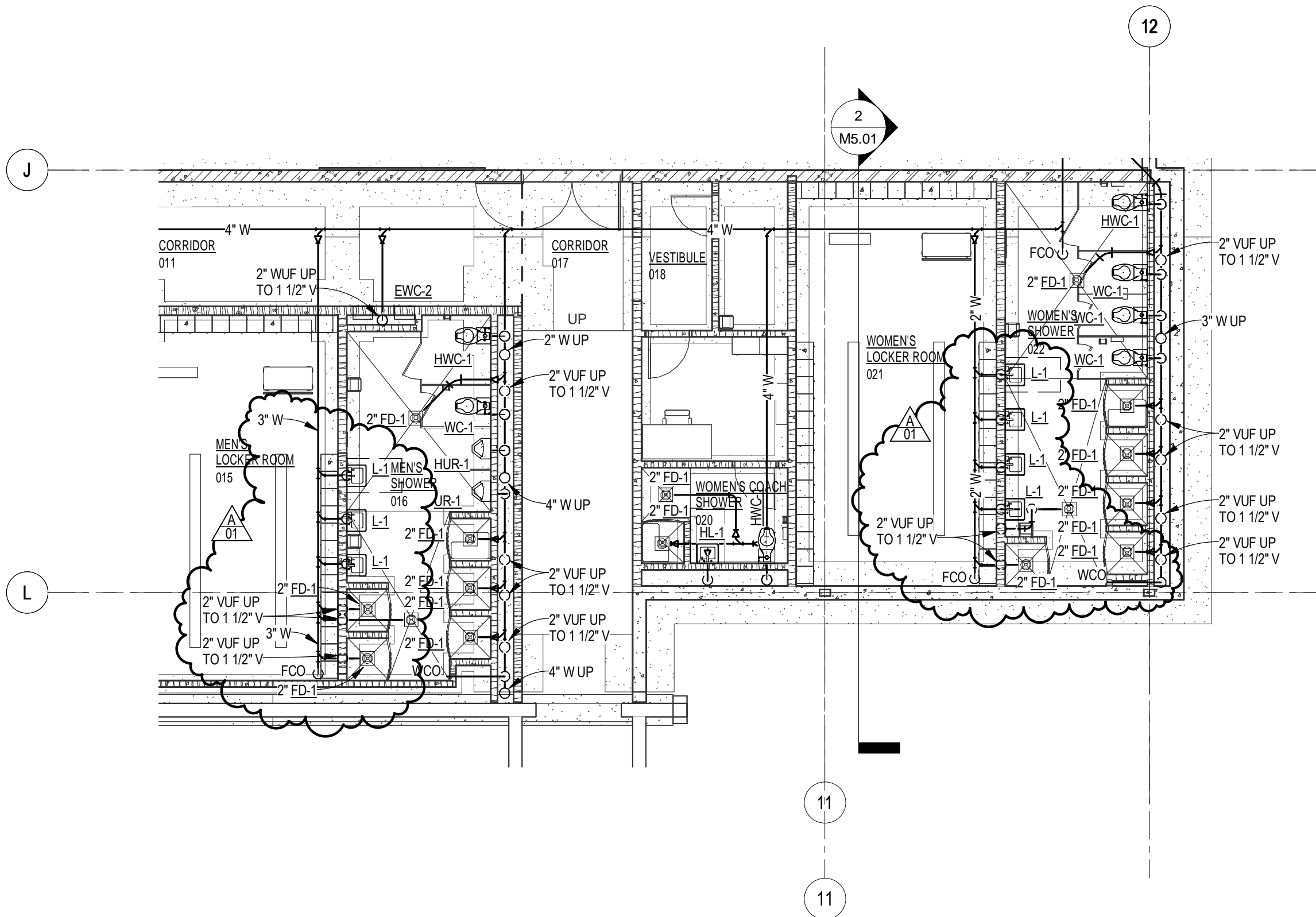


ROOF HVAC PLAN

SCALE: 1/8" = 1'-0"

Freeman Public Schools
Adams, Nebraska 68301
TCEP No.: 780-001-11

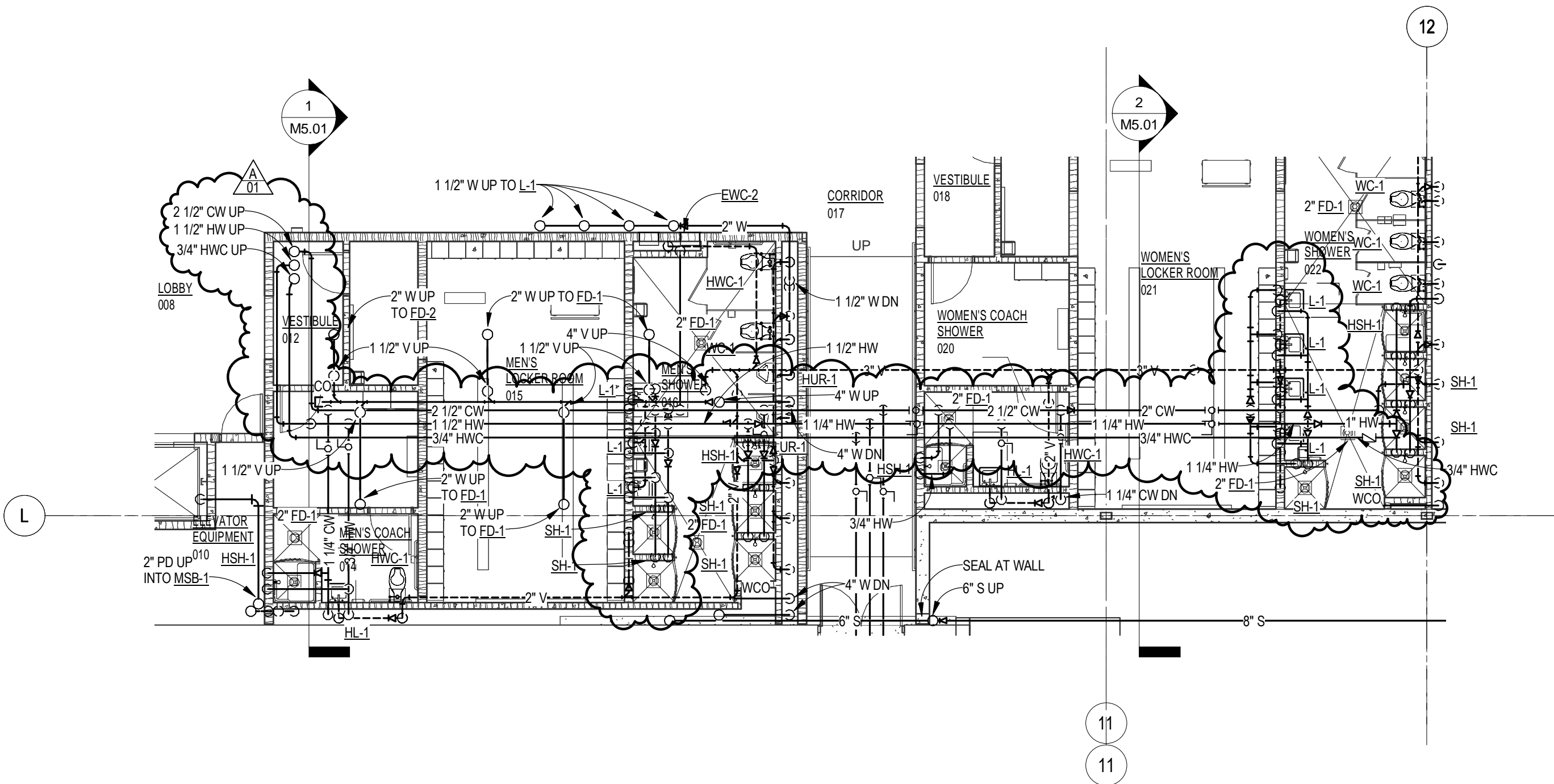
Addendum #01
Supplemental Drawing: SDM-003
Revision of Sheet: M1.03
Date: 09/26/12



BASEMENT UNDERFLOOR PIPING PLAN
SCALE: 1/8" = 1'-0"

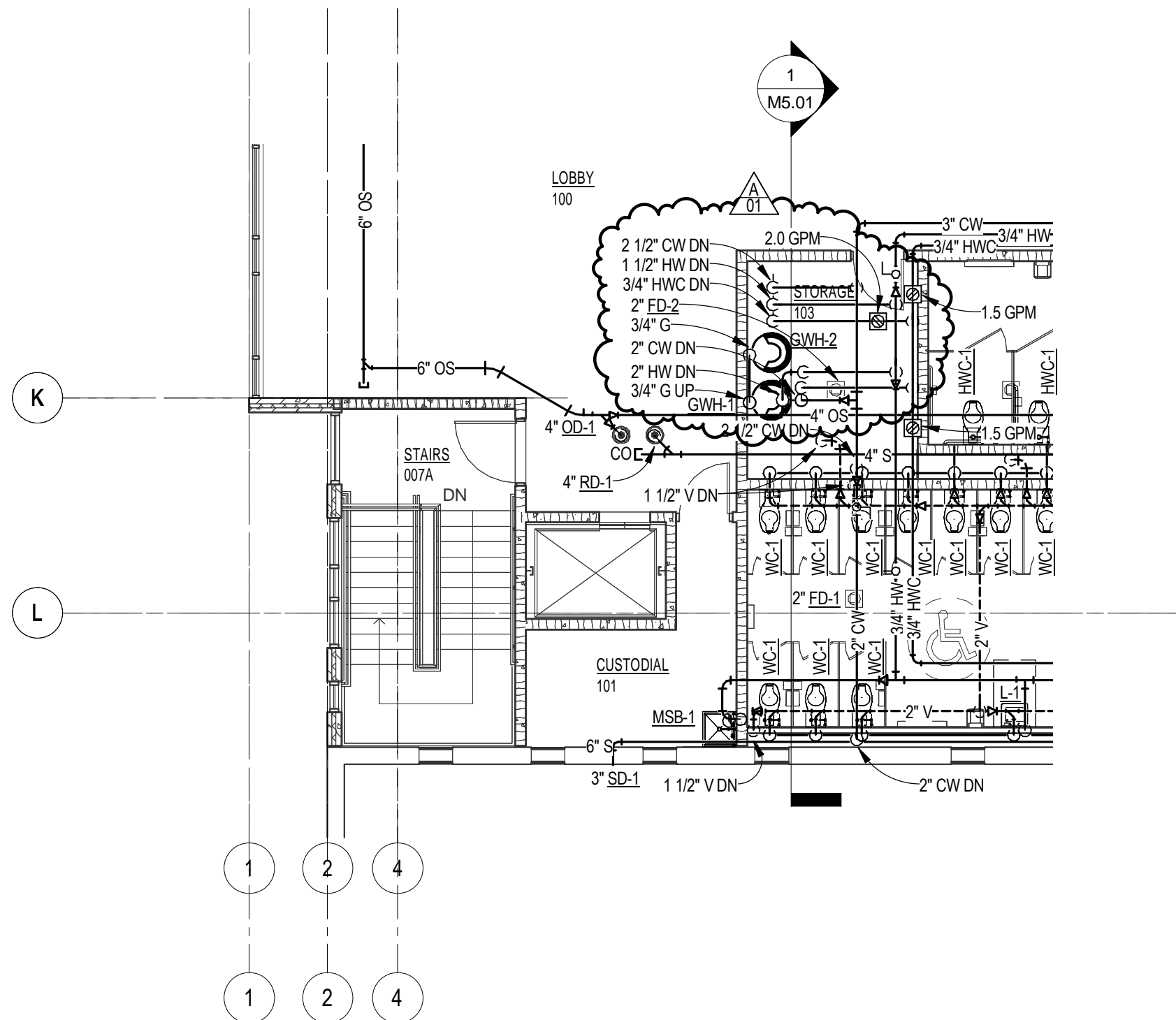
Freeman Public Schools
Adams, Nebraska 68301
TCEP No.: 780-001-11

Addendum #01
Supplemental Drawing: SDM-004
Revision of Sheet: M2.00
Date: 09/26/12



BASEMENT PIPING PLAN

SCALE: 1/8" = 1'-0"

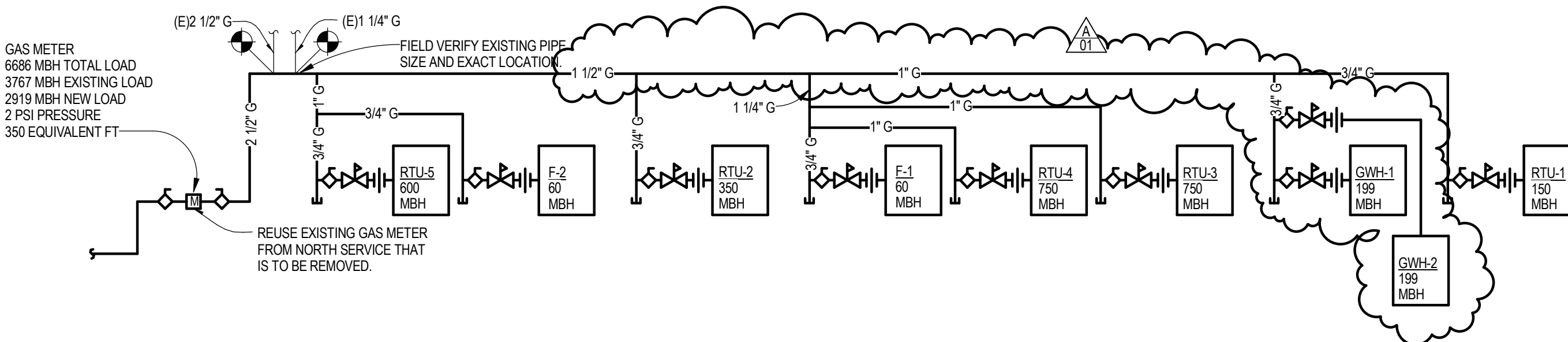


FIRST FLOOR PIPING PLAN

SCALE: 1/8" = 1'-0"

Freeman Public Schools
Adams, Nebraska 68301
TCEP No.: 780-001-11

Addendum #01
Supplemental Drawing: SDM-006
Revision of Sheet: M2.02
Date: 09/26/12

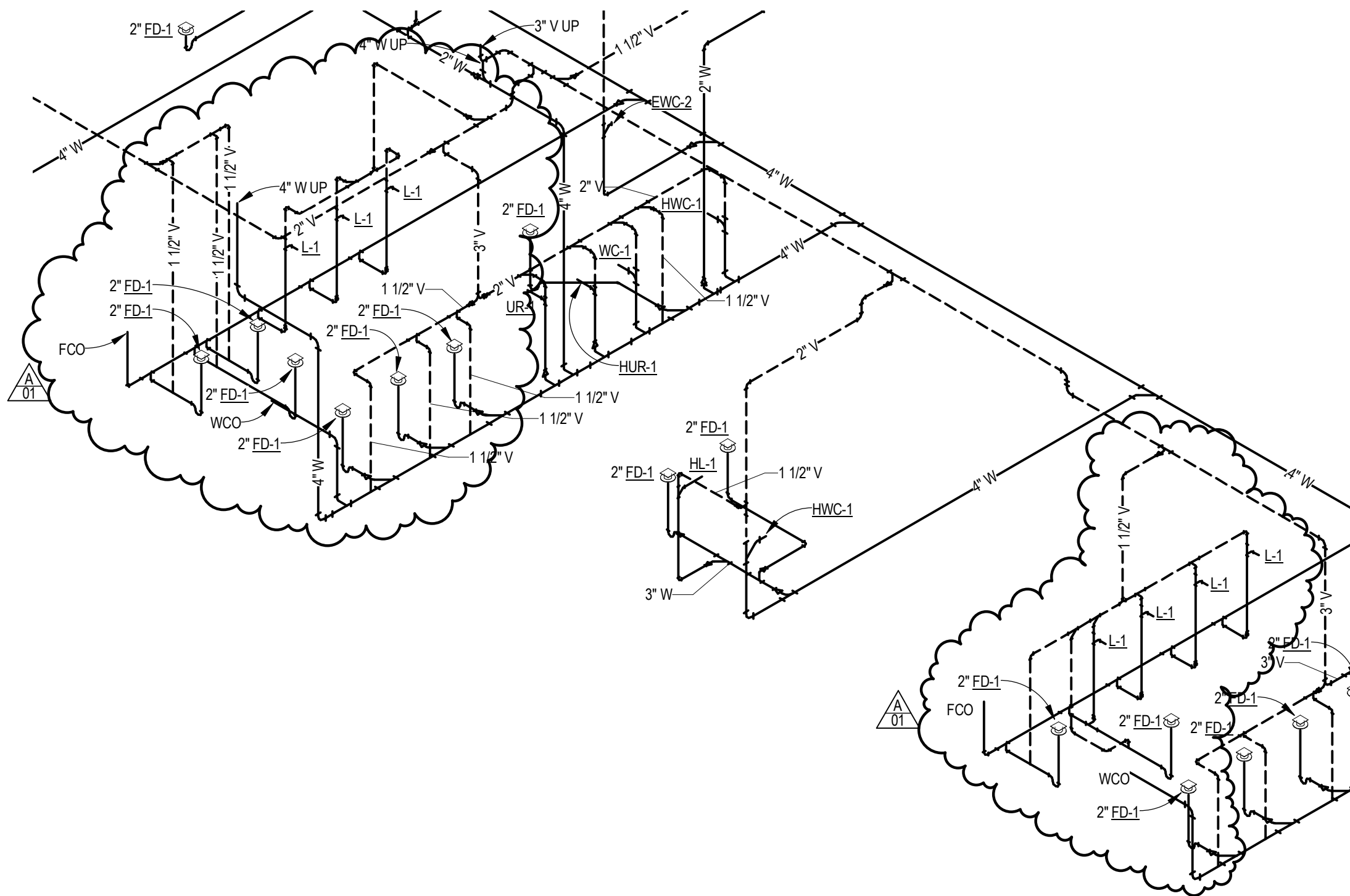


3 GAS PIPING SCHEMATIC

SCALE: NO SCALE

Freeman Public Schools
Adams, Nebraska 68301
TCEP No.: 780-001-11

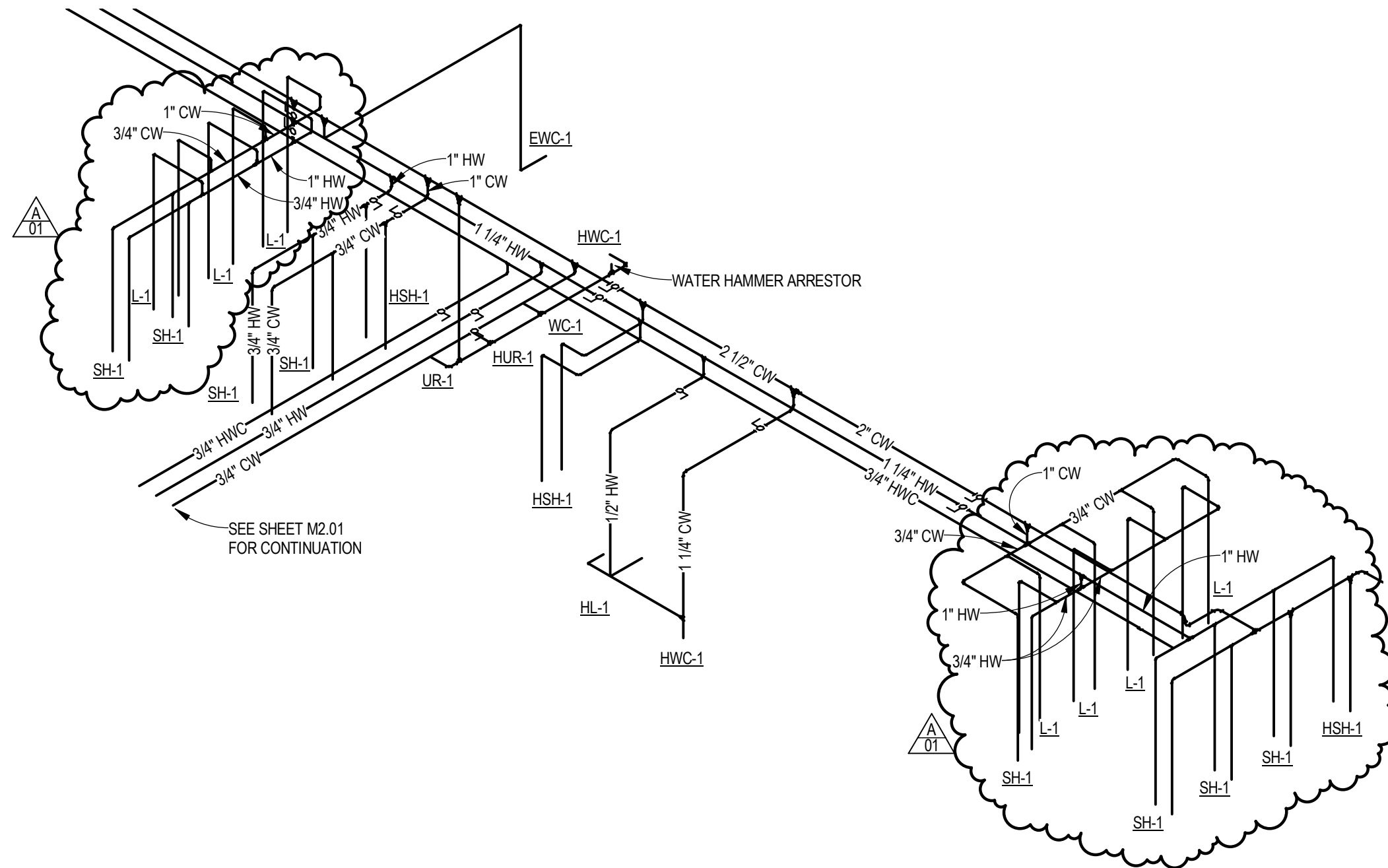
Addendum #01
Supplemental Drawing: SDM-007
Revision of Sheet: M4.01
Date: 09/26/12



2 BASEMENT SANITARY/VENT RISER DIAGRAM
SCALE: NO SCALE

Freeman Public Schools
Adams, Nebraska 68301
TCEP No.: 780-001-11

Addendum #01
Supplemental Drawing: SDM-008
Revision of Sheet: M4.01
Date: 09/26/12

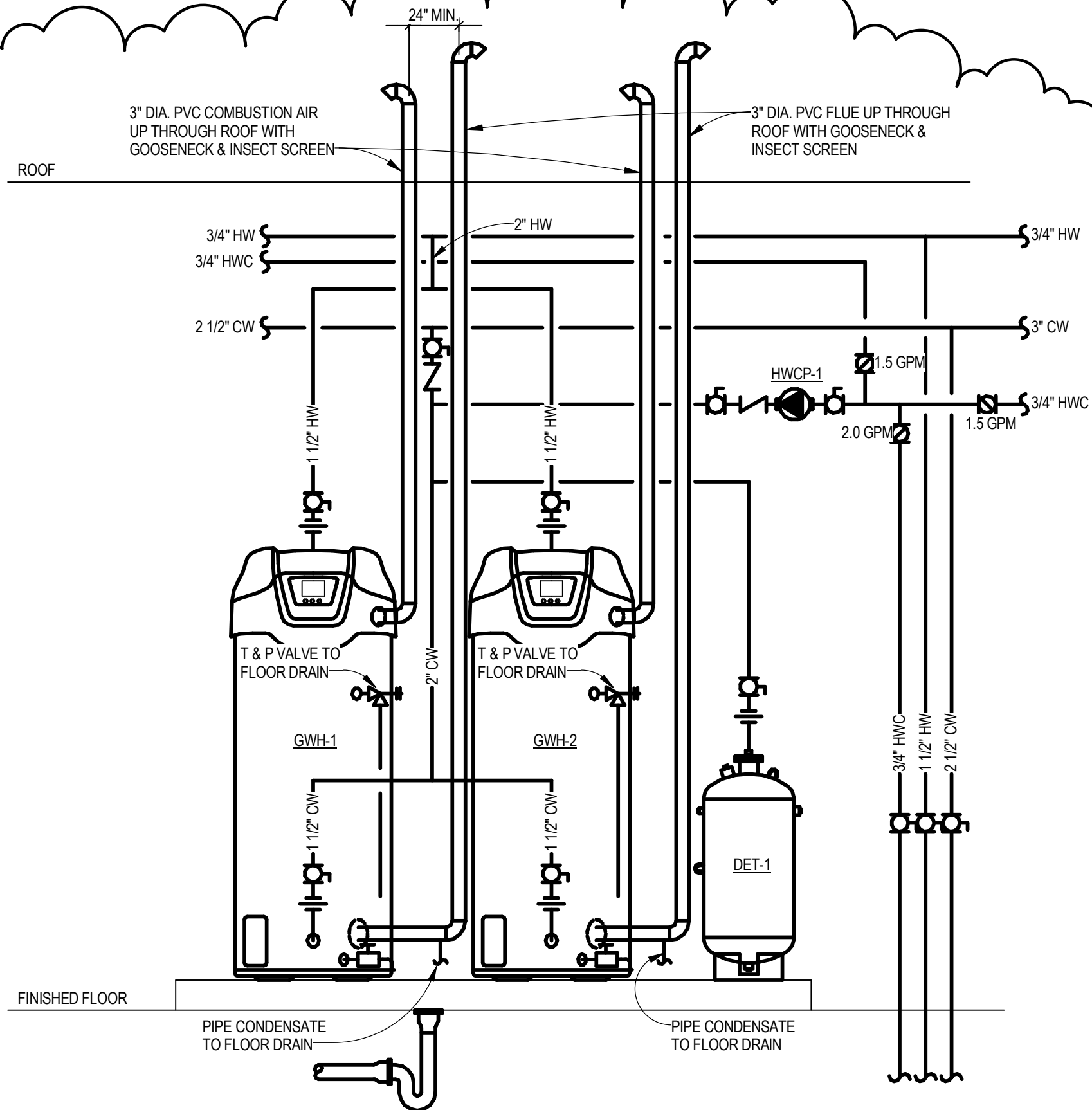


2 BASEMENT DOMESTIC WATER RISER DIAGRAM
SCALE: NO SCALE

Freeman Public Schools
Adams, Nebraska 68301
TCEP No.: 780-001-11

Addendum #01
Supplemental Drawing: SDM-009
Revision of Sheet: M4.02
Date: 09/26/12

A
01


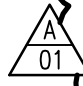


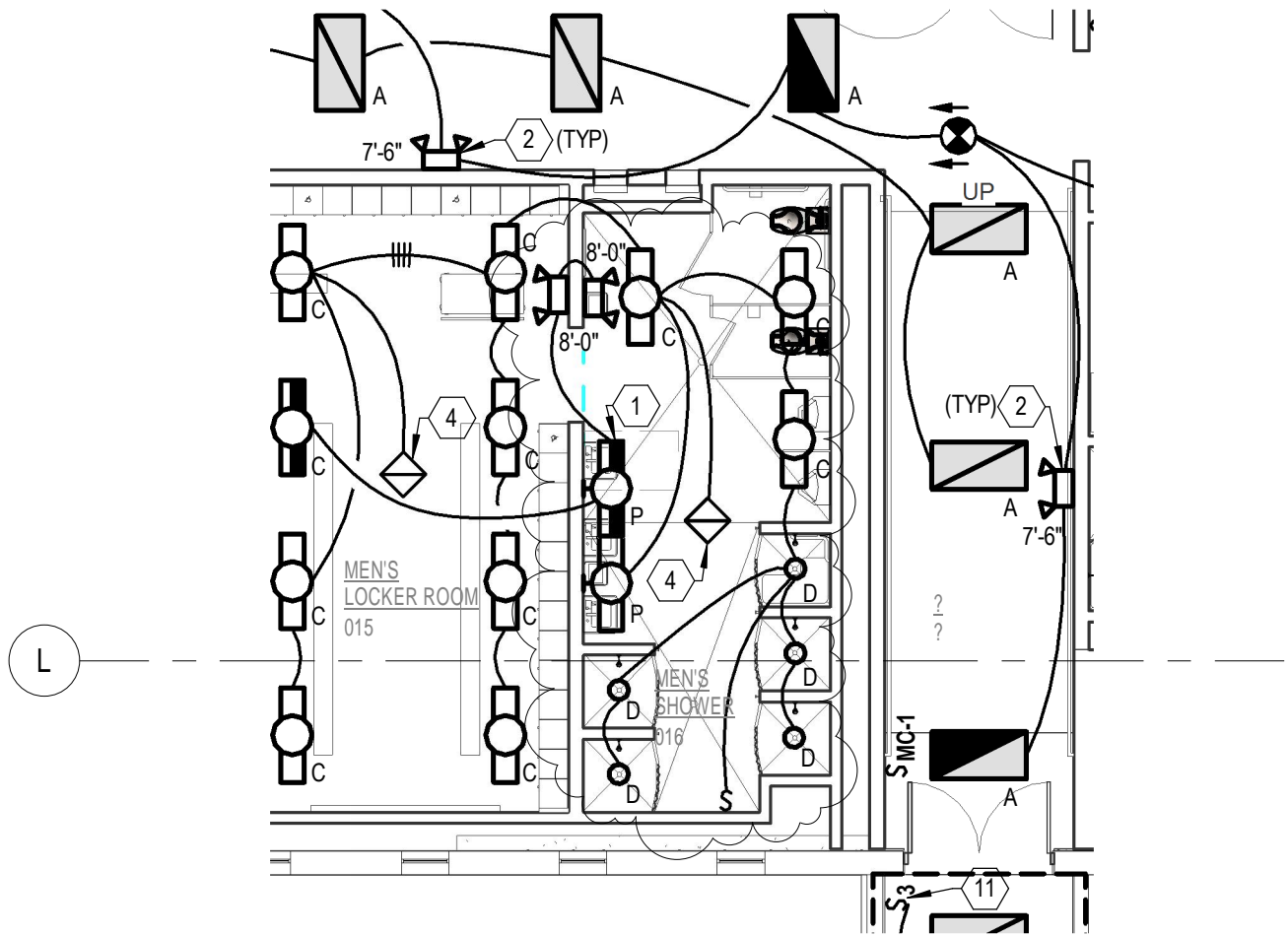
12 DUAL WATER HEATER DETAIL

SCALE: NO SCALE

Freeman Public Schools
Adams, Nebraska 68301
TCEP No.: 780-001-11

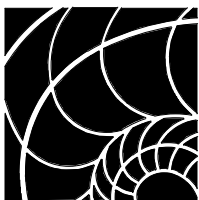
Addendum #01
Supplemental Drawing: SDM-010
Revision of Sheet: M6.01
Date: 09/26/12

			PREVENTER, HYDRANT WITH ASSE 1052 APPROVED TWO CHECK BACKFLOW PREVENTER, CHROME FINISH, 3/4" HOSE CONNECTION, STAINLESS STEEL STEM, LOOSE KEY OPERATING HANDLE. SE NOTE 3.				
	DET-1	DOMESTIC EXPANSION TANK	TANK:	BELL & GOSSETT MODEL PTA-30V OR EQUIVALENT 14 GALLON, 9 GALLON ACCEPTANCE. PRECHARGED DIAPHRAGM TANK DESIGNED FOR POTABLE WATER SYSTEMS.			3/4"
	GWH-1	GAS WATER HEATER	HEATER:	A.O. SMITH MODEL BTH-199 OR EQUIVALENT 100 GALLON STORAGE 199 MBH INPUT, 283 GPH RECOVERY AT 80 DEG. F TEMPERATURE RISE, SEALED COMBUSTION WITH 3" PVC VENT & COMBUSTION AIR INTAKE, 120 VOLT, SINGLE PHASE COMBUSTION AIR BLOWER, ELECTRONIC CONTROLS, GLASS LINED, HAND CLEANOUT, ASME RATED TEMPERATURE AND PRESSURE RELIEF VALVE AND THREE YEAR WARRANTY ON TANK ASSEMBLY INCLUDING COMBUSTION CHAMBER AND FLUE.		1-1/2"	1-1/2"
	GWH-2	GAS WATER HEATER	HEATER:	A.O. SMITH MODEL BTH-199 OR EQUIVALENT 100 GALLON STORAGE 199 MBH INPUT, 283 GPH RECOVERY AT 80 DEG. F TEMPERATURE RISE, SEALED COMBUSTION WITH 3" PVC VENT & COMBUSTION AIR INTAKE, 120 VOLT, SINGLE PHASE COMBUSTION AIR BLOWER, ELECTRONIC CONTROLS, GLASS LINED, HAND CLEANOUT, ASME RATED TEMPERATURE AND PRESSURE RELIEF VALVE AND THREE YEAR WARRANTY ON TANK ASSEMBLY INCLUDING COMBUSTION CHAMBER AND FLUE.		1-1/2"	1-1/2"
	HWCP-1	HOT WATER CIRCULATING PUMP	PUMP:	BELL & GOSSETT MODEL E3-6VBTXYZ OR EQUIVALENT. 5 GPM AT 5 FT OF HEAD, 28 WATTS, PRE-WIRED 6 FT ELECTRICAL PLUG, E3 TIMER.			3/4"
	SP-1	SUMP PUMP	PUMP:	LIBERTY MODEL 257 VMF OR EQUIVALENT 1/3 HP SUBMERSIBLE CAST IRON BODY	2"		



BASEMENT LIGHTING PLAN

SCALE: 1/8" = 1'-0"



**The
Clark
Enersen
Partners**

Architecture + Landscape Architecture + Engineering + Interiors
 1010 Lincoln Mall, Suite 200 Lincoln, NE 68508-2883
 402 477.9291 Fax 402 477.6542
 Kansas City, MO Overland Park, KS www.clarkenersen.com

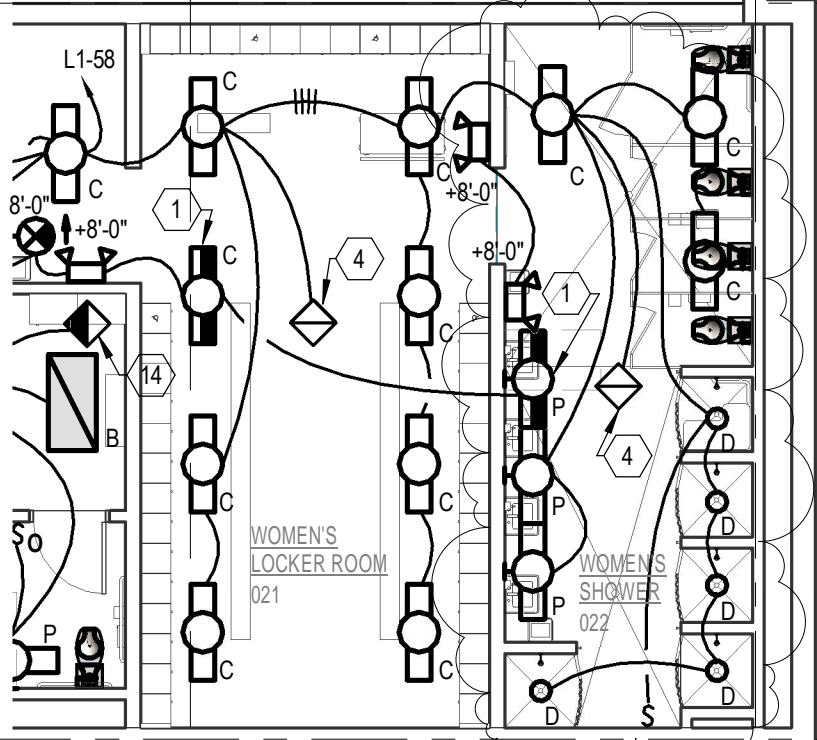
Freeman Public Schools
 Adams, Nebraska
 TCEP No.: 780-001-11

Addendum #01
 Supplemental Drawing: SDE-001
 Revision of Sheet: E1.00
 Date: 09/26/12

12

J

L

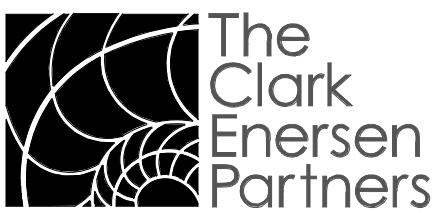


11



BASEMENT LIGHTING PLAN

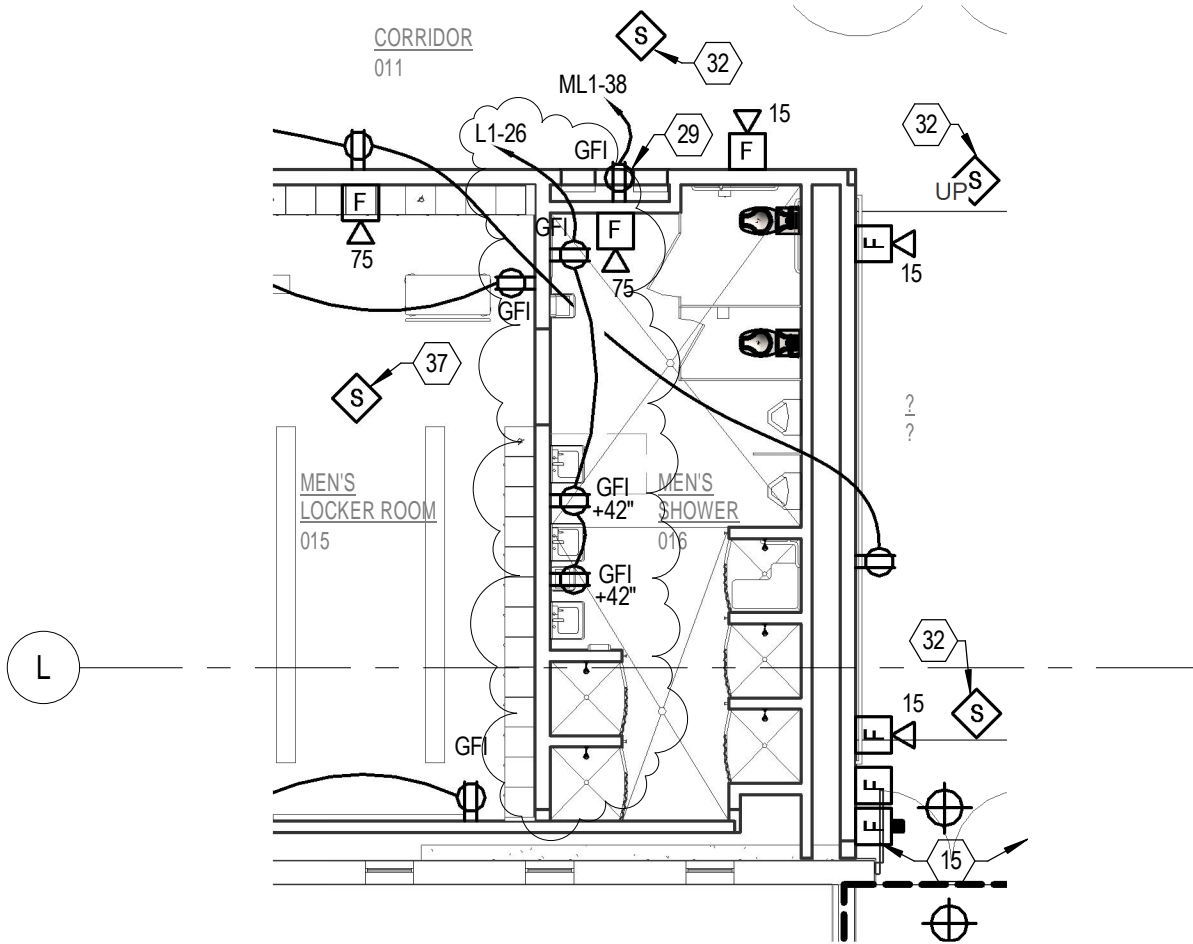
SCALE: 1/8" = 1'-0"



Architecture + Landscape Architecture + Engineering + Interiors
 1010 Lincoln Mall, Suite 200 Lincoln, NE 68508-2883
 402 477.9291 Fax 402 477.6542
 Kansas City, MO Overland Park, KS www.clarkenersen.com

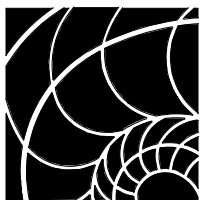
Freeman Public Schools
 Adams, Nebraska
 TCEP No.: 780-001-11

Addendum #01
 Supplemental Drawing: SDE-002
 Revision of Sheet: E1.01
 Date: 09/26/12



BASEMENT POWER & AUXILIARY SYSTEMS PLAN

SCALE: 1/8" = 1'-0"



**The
Clark
Enersen
Partners**

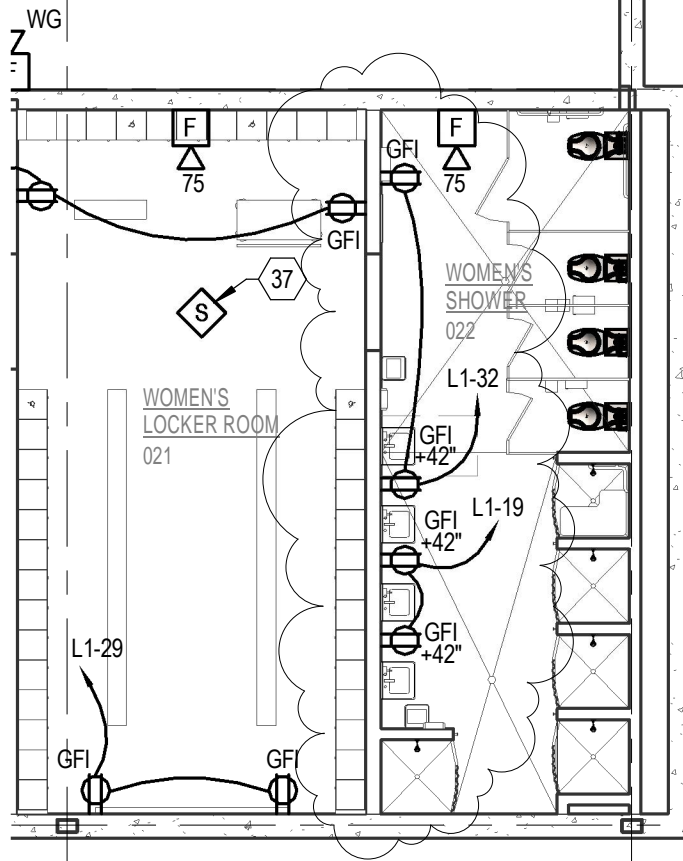
Architecture + Landscape Architecture + Engineering + Interiors
 1010 Lincoln Mall, Suite 200 Lincoln, NE 68508-2883
 402 477.9291 Fax 402 477.6542
 Kansas City, MO Overland Park, KS www.clarkenersen.com

Freeman Public Schools
 Adams, Nebraska
 TCEP No.: 780-001-11

Addendum #01
 Supplemental Drawing: SDE-003
 Revision of Sheet: E2.00
 Date: 09/26/12

12

J



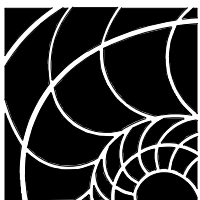
L

11



BASEMENT POWER & AUXILIARY SYSTEMS PLAN

SCALE: 1/8" = 1'-0"



The
Clark
Enersen
Partners

Architecture + Landscape Architecture + Engineering + Interiors
 1010 Lincoln Mall, Suite 200 Lincoln, NE 68508-2883
 402 477.9291 Fax 402 477.6542
 Kansas City, MO Overland Park, KS www.clarkenersen.com

Freeman Public Schools
 Adams, Nebraska
 TCEP No.: 780-001-11

Addendum #01
 Supplemental Drawing: SDE-004
 Revision of Sheet: E2.01
 Date: 09/26/12