



Addendum #3 - Bid Package #6929-07

Project Name: Lincoln Public Schools District Office
5901 'O' Street
Lincoln, NE
Project No.: 11065
Issued: August 17, 2012

This Addendum is issued by Hampton Construction to all known sub-contractors working on the preparation of proposals associated with the Bid Documents dated July 27, 2012. This Addendum is to authorize the use of the following information in preparing proposals for the above named project.

MODIFICATIONS TO THE SPECIFICATIONS

ADD 3-1. Section 230713 – DUCT INSULATION

- A. Remove paragraph 230713-3.3-B
- B. Revise paragraph 230713-3.3-D to read:
 - i. Supply, return, fresh air or exhaust ducts: 1 inch thick liner on rectangular ducts and 1-1/2" inch thick duct wrap, or insulation sleeve on round ducts. (No liner required on range hood duct).
- C. Remove paragraph 230713-3.3-D

ADD 3-2. Section 262413 – Switchboards

- A. Delete paragraphs 2.3(5) and (6). The connection to the temperature controls system shall be through the junction box specified by the LES electric meters.

ARCHITECTURAL PRIOR APPROVALS / SUBSTITUTIONS

ADD 3-3. The following manufacturers have received prior approval for bidding purposes subject to shop drawing review:

<u>Specification Section</u>	<u>Manufacturer / Product</u>
a. 081113 – Hollow Metal Doors and Frames	Security Metal Products Corp.

MECHANICAL PRIOR APPROVALS / SUBSTITUTIONS

ADD 3-4. The following manufacturers have received prior approval for bidding purposes subject to shop drawing review:

<u>Equipment</u>	<u>Manufacturer</u>
a. Fire and Smoke Dampers	Air Balance

- b. HVAC Power Ventilators
- c. Volume Dampers

Twin City Fan Company
Air Balance

MODIFICATIONS TO THE DRAWINGS

- ADD 3-5.** Refer to the Master Keynote Legend on the cover sheet. Add the following keynotes:
- 055000.G2 HSS 3"x1 1/2"x3/16" PAINTED STEEL TUBE FOR SUPPORT OF COUNTERTOP. PROVIDE HSS 2"x2"x3/16" INTERMEDIATE SUPPORTS FROM FRONT TO BACK OF COUNTER AT EITHER SIDE OF COUNTERTOP WASTE CHUTE. PROVIDE HSS 3"x1 1/2"x3/16" VERTICAL TUBES WITHIN END WALL ASSEMBLY FOR ATTACHMENT OF FRONT AND BACK HORIZONTAL SUPPORTS.
- ADD 3-6.** Refer to K1/A105; One lav has been removed from restroom layout. Refer to attached **Sketch A1**.
- ADD 3-7.** Refer to K4/A105; One lav has been removed from restroom layout. Refer to attached **Sketch A2**.
- ADD 3-8.** Refer to K8/A105; One lav has been removed from restroom layout. Refer to attached **Sketch A3**.
- ADD 3-9.** Refer to K12/A105; One lav has been removed from restroom layout. Refer to attached **Sketch A4**.
- ADD 3-10.** Refer to A8/A105; Restroom configuration of lavs has modified. Refer to attached **Sketch A5**.
- ADD 3-11.** Refer to F12/A105; Additional information has been provided in reference to the reception desk. Refer to attached **Sketch A6**. In particular, reference detail cuts to clarify intent of under counter lighting at front face of desk.
- ADD 3-12.** Refer to Sheet A601; Add Detail N1. Refer to attached **Sketch A7**.
- ADD 3-13.** Refer to Sheet A601; Add Detail K1. Refer to attached **Sketch A8**.
- ADD 3-14.** Refer to Sheet A601; Add Detail K10. Refer to attached **Sketch A9**.
- ADD 3-15.** Refer to Sheet A601; Add Detail K13. Refer to attached **Sketch A10**.
- ADD 3-16.** Refer to Sheet M101 and M301 – First Floor Mechanical Plans
- A. Removed one counter lavatory (CL) and associated soil/waste/vent piping and domestic water piping to reflect the new counter layout.
- ADD 3-17.** Refer to Sheet M102 and M302 – Second Floor Mechanical Plans
- A. Removed one counter lavatory (CL) and associated soil/waste/vent piping and domestic water piping to reflect the new counter layout.

ADD 3-18. Refer to Sheet M103 and M303 – Third Floor Mechanical Plans

- A. Removed one counter lavatory (CL) and associated soil/waste/vent piping and domestic water piping to reflect the new counter layout.

ADD 3-19. Refer to Sheet M202 – Second Floor HVAC Plans

- A. Add two diffusers to Processing 208 and revise CFM values to diffusers serving Media Library 200. See **attached drawing M1**.

ADD 3-20. Refer to Sheet M500 - MECHANICAL SCHEDULES

- A. Revise item #4 in the Mechanical Equipment Schedule to read:
 - i. **ELEVATOR SUMP PUMPS (SP-1, SP-2):** 50 GPM AT 19' OF HEAD, 1/2 HP, 120 VOLT, SUBMERSIBLE TYPE WITH BUILT IN OVERLOAD PROTECTION, LIQUID LEVEL CONTROL AND OIL-MINDER SYSTEM. STANCOR MODEL SE-50 O/M ELV. PUMP TO FIT EXISTING SQUARE BASIN, PROVIDE BASIN COVER, VERIFY EXACT SIZE
- B. Revise Plumbing Fixture Schedule as follows:
 - i. Water and Waste TrueBro insulation kit to be provided for all Counter Lavatory (CL) and Counter Lavatory Handi (CLH).
 - ii. Remove Badger 5 disposal from Sink type 1 (S-1)

ADD 3-21. Refer to Sheet ME001 SITE PLAN – MECHANICAL AND ELECTRICAL

- A. Revise General Note G to read:
 - i. THE GAS METER SHALL BE LOCATED ON THE SOUTH SIDE OF THE WALL LOCATED AT GRID LINE 9. THE MECHANICAL CONTRACTOR SHALL RUN THE NEW GAS PIPING UNDERGROUND APPROX. 100 FEET SOUTH TO THE NEW GENERATOR. THE GAS PIPING SHALL THEN BE SUPPORTED FROM UNISTRUT OR OTHER APPROVED METHOD.

ADD 3-22. Refer to Sheet ME001 Site Plan – Mechanical and Electrical

- A. There is a light fixture that is not labeled at the southwest corner of the Retail building. This shall be a Type 28. This will make a total of 14 Type 28 light fixtures around the Retail and Whole Foods buildings. See **attached drawing E1**.
- B. Move Light Fixture Type 26 that is located at the handicap parking stall in front of Whole Foods 4-feet to the south. See **attached drawing E1**.

ADD 3-23. Refer to Sheet E101 – First Floor Plan – Lighting

- A. Change Light Fixture 35NL to Type 3NL, (delete bodine transfer device). Light fixture shall still be connected to emergency circuit and shall be unswitched.
- B. Change Light Fixture 37NL to Type 36NL, (delete bodine transfer device). Light fixture shall still be connected to emergency circuit and shall be unswitched.
- C. Change Light Fixture 45NL to Type 1NL, (delete bodine transfer device). Light fixture shall still be connected to emergency circuit and shall be unswitched.
- D. Provide under cabinet lighting as indicated. See **attached drawings E2 and E3**.

ADD 3-24. Refer to Sheet E102 – Second Floor Plan – Lighting

- A. Change Light Fixture 35NL to Type 3NL, (delete bodine transfer device). Light fixture shall still be connected to emergency circuit and shall be unswitched.
- B. Provide under cabinet lighting as indicated. See **attached drawings E4 and E5.**

ADD 3-25. Refer to Sheet E103 – Third Floor Plan – Lighting

- A. Change Light Fixture 35NL to Type 3NL, (delete bodine transfer device). Light fixture shall still be connected to emergency circuit and shall be unswitched.
- B. Change Light Fixture 37NL to Type 36NL, (delete bodine transfer device). Light fixture shall still be connected to emergency circuit and shall be unswitched.
- C. Provide under cabinet lighting as indicated and the addition of a Type 3 light fixture. See **attached drawing E6.**
- D. Provide under cabinet lighting as indicated and add circuit number to lighting circuit. See **attached drawing E7.**

ADD 3-26. Refer to Sheet E201 – First Floor Plan - Electrical

- A. In Vestibule 184A the keyed switch for the handicap door operators shall shutdown all three door operators.
- B. Add data outlet with 2 jacks and change duplex receptacle to four-plex in Credit Union 134. See **attached drawing E8.**

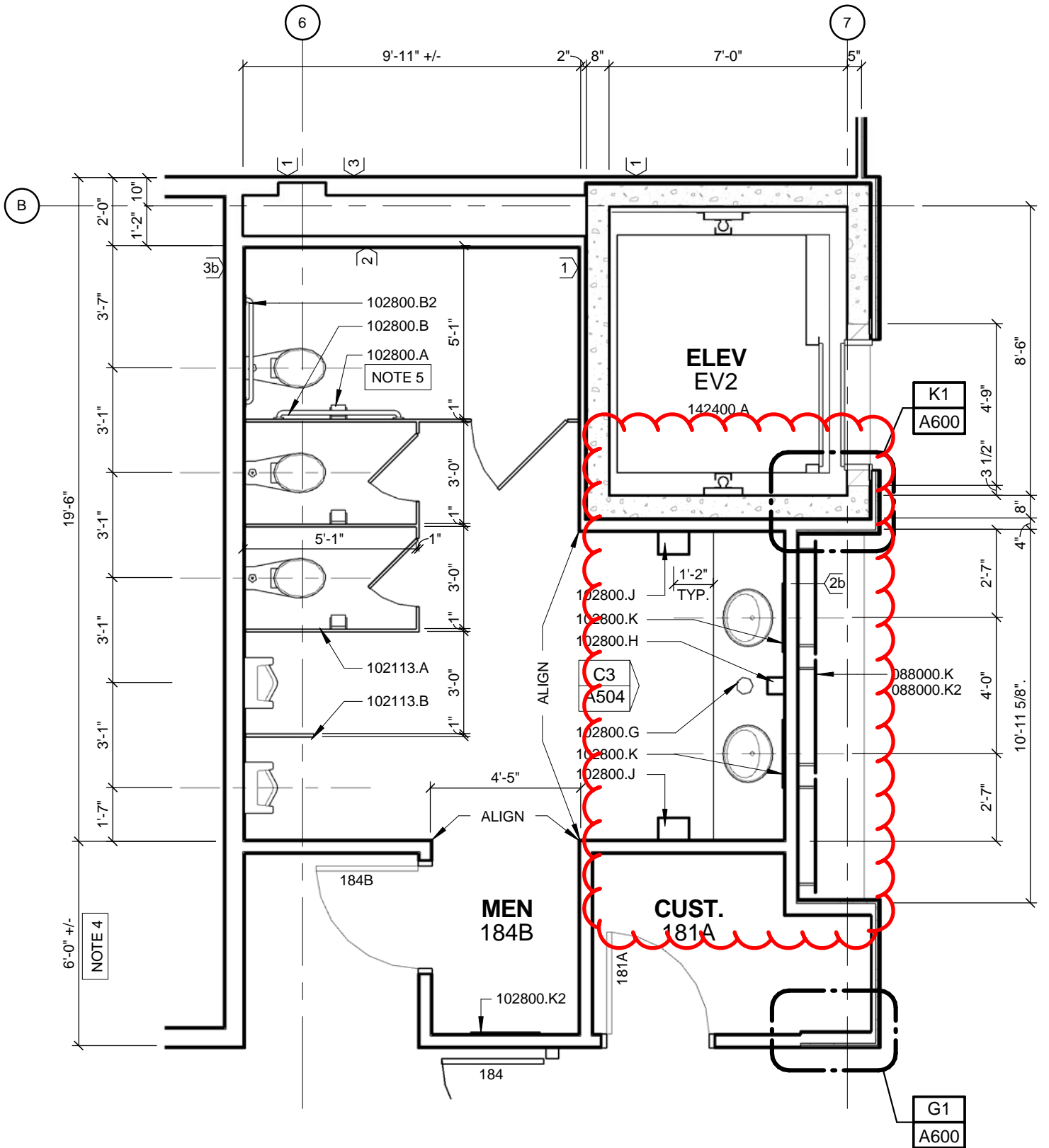
ADD 3-27. Refer to Sheet E203 – Third Floor Plan – Electrical

- A. Change Note 7 to read, “Mount above main counter and below upper counter”.
- B. Change Note 6 to Note 16 in Men 381B and Women381G. See **attached drawing E9.**

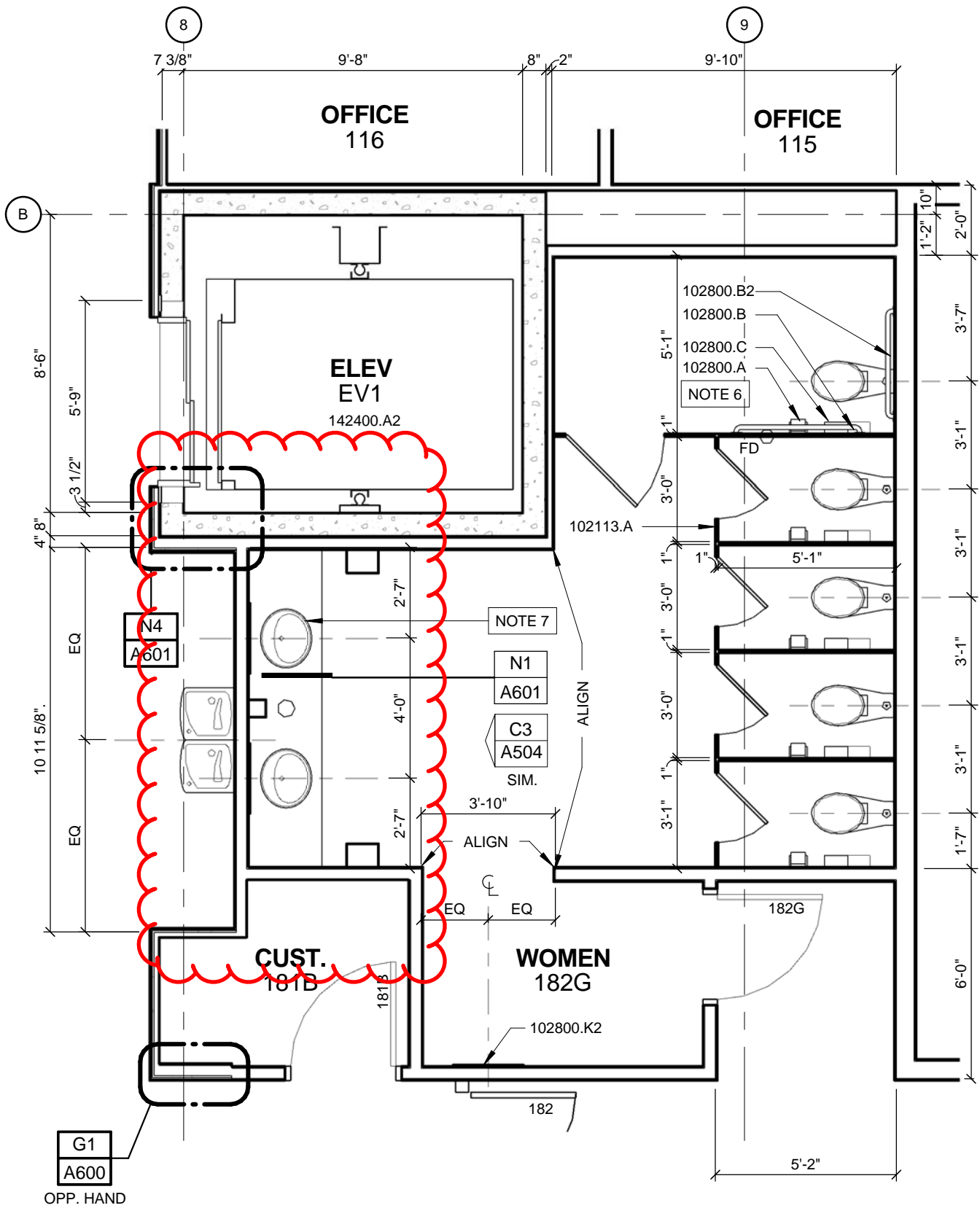
ADD 3-28. Refer to Sheet E500 – Schedules

- A. Delete Type 57 and 58 specified in Addendum #2 and replace with new Type 57 and 58 specified in this addendum. See **attached drawing E10**

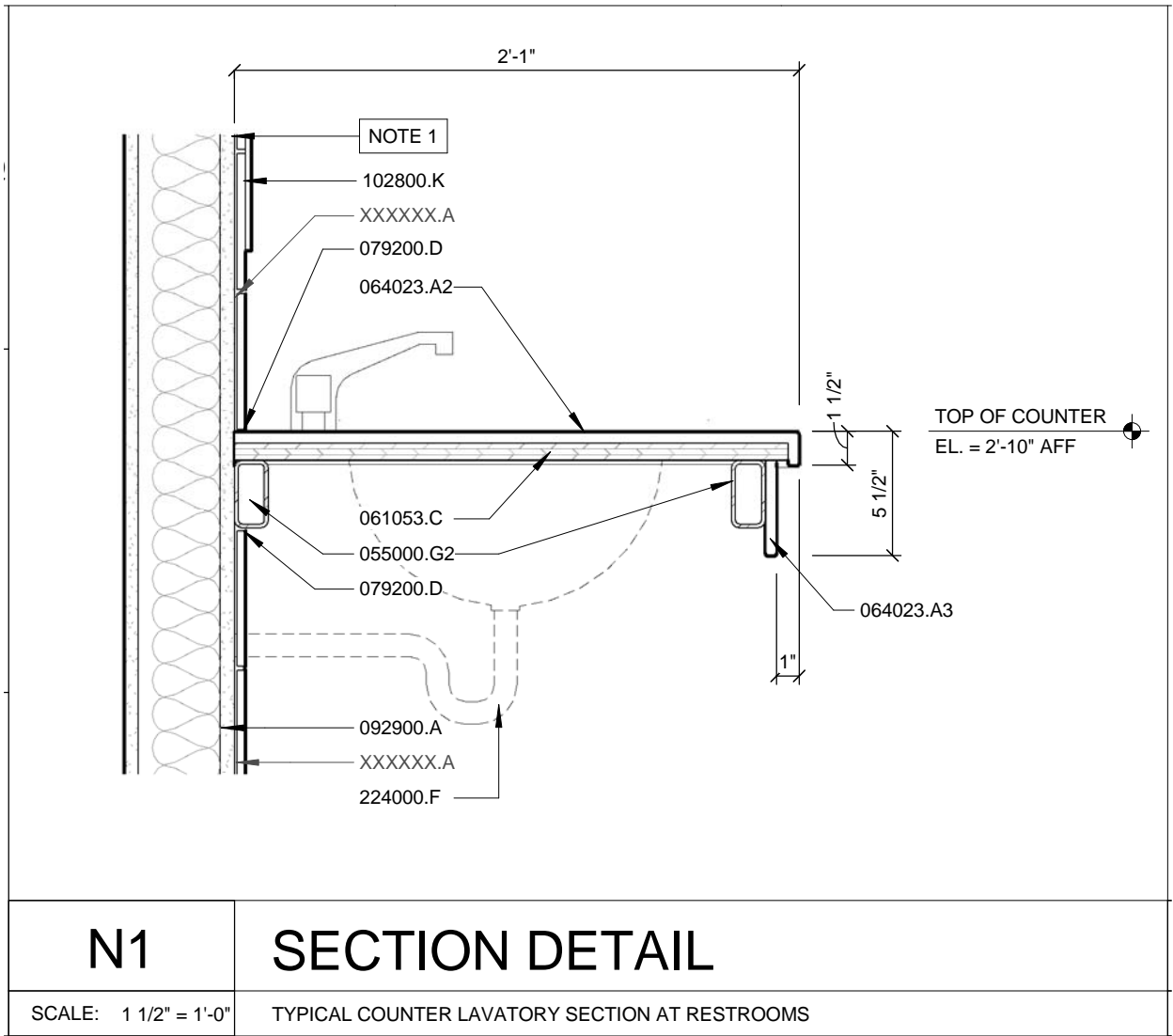
End of Addendum #3, Bid Package #6929-07



Sketch A1
 Bid Package 6929-07
 Addendum 03
 Modification to K1/A105



Sketch A2
 Bid Package 6929-07
 Addendum 03
 Modification to K4/A105



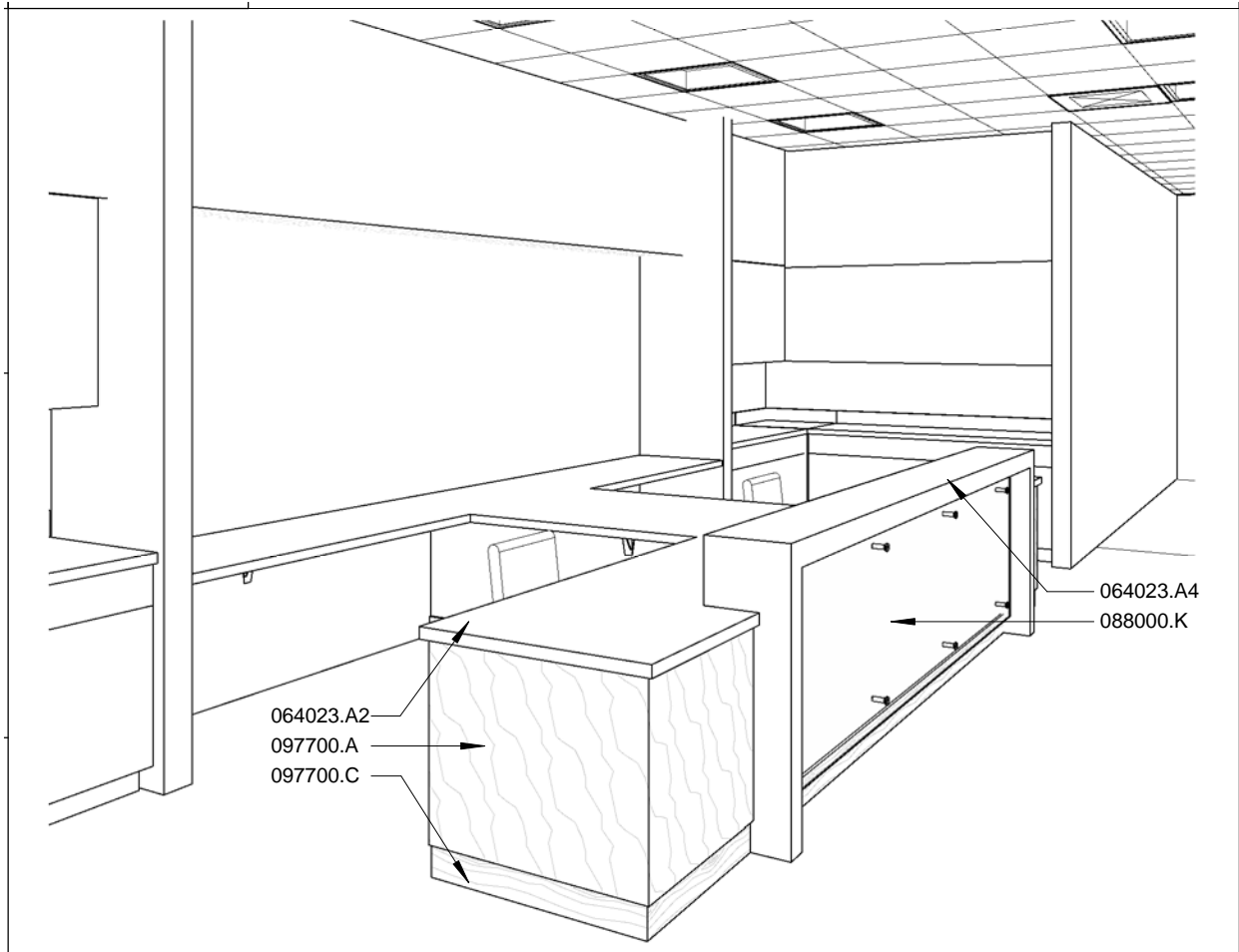
N1

SECTION DETAIL

SCALE: 1 1/2" = 1'-0"

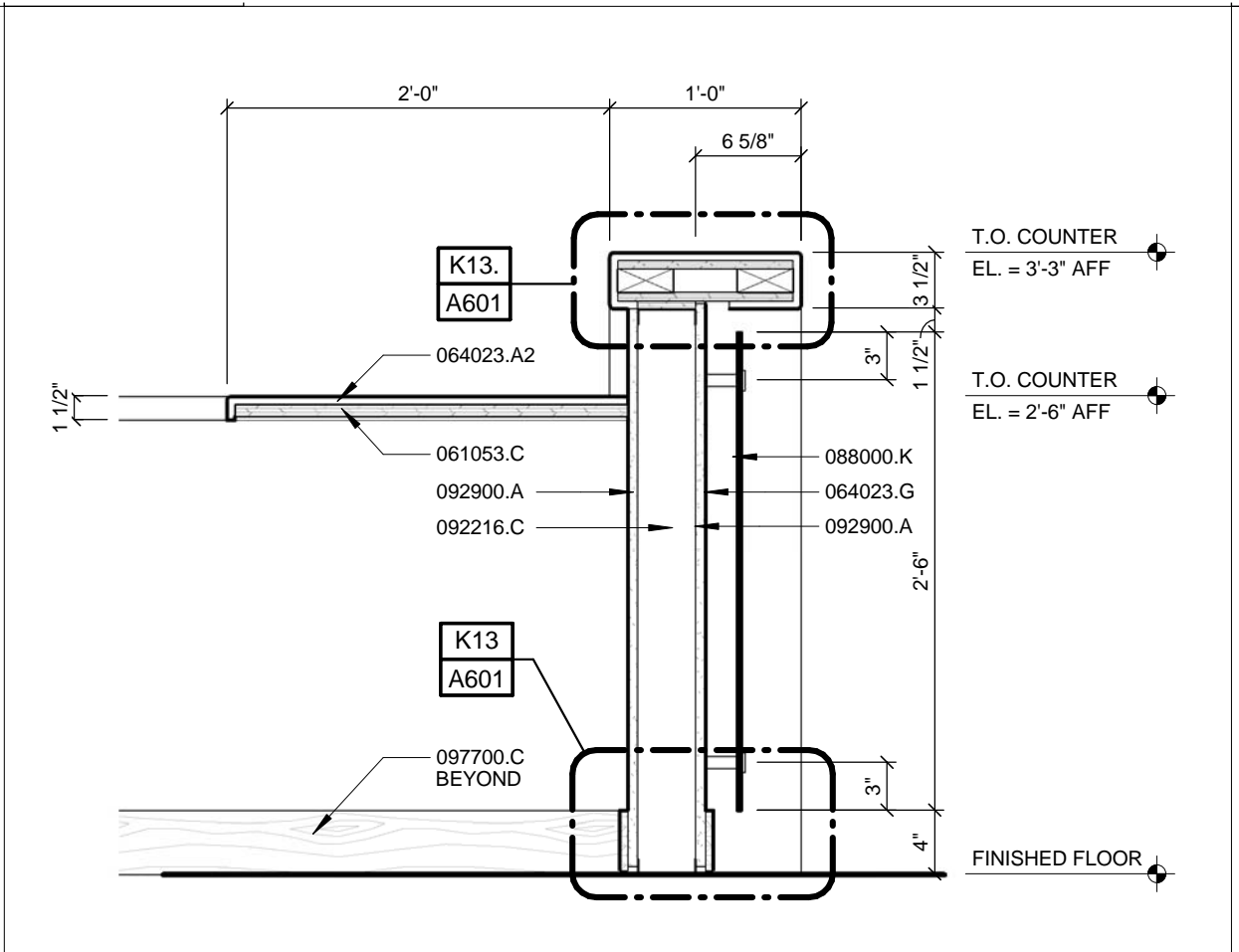
TYPICAL COUNTER LAVATORY SECTION AT RESTROOMS

Sketch A7
 Bid Package 6929-07
 Addendum 03
 New Detail N1/A601



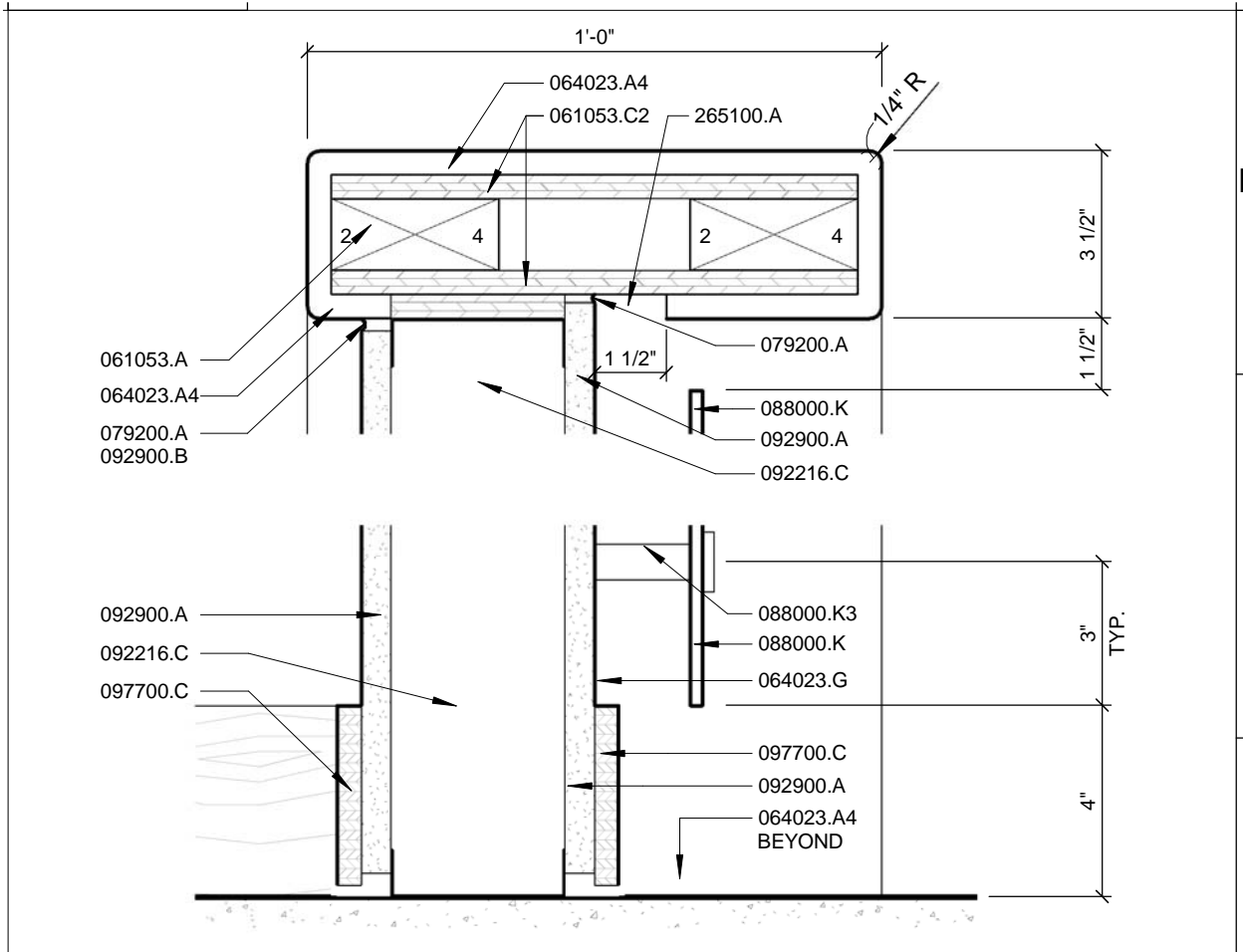
<p>K1</p>	<p>3D PERSPECTIVE</p>
<p>SCALE:</p>	<p>GROUND LEVEL RECEPTION DESK - TYPICAL DESIGN FOR SECOND AND THIRD LEVELS</p>

Sketch A8
 Bid Package 6929-07
 Addendum 03
 New Detail K10/A601



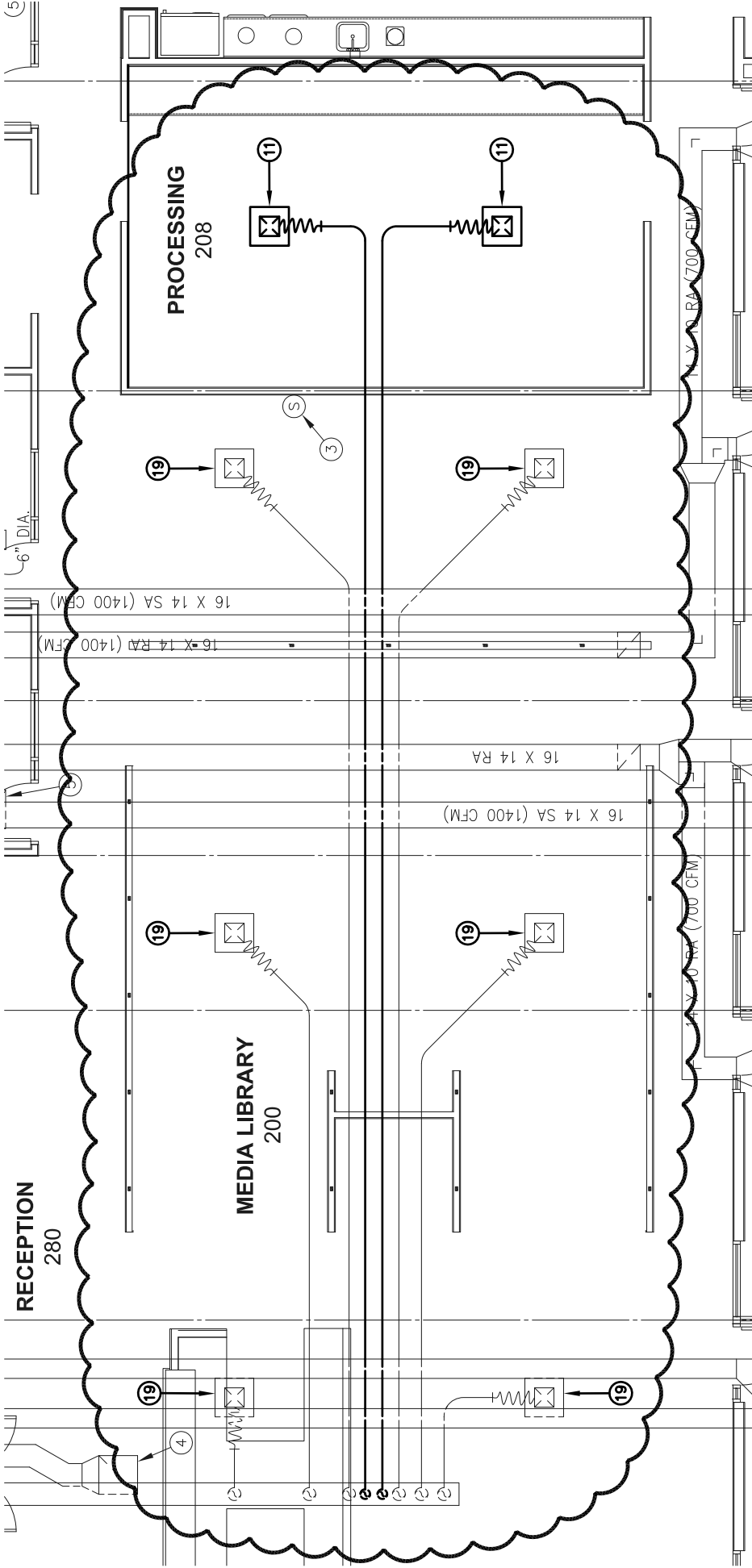
<p>K10</p>	<p>SECTION DETAIL</p>
<p>SCALE: 1" = 1'-0"</p>	<p>TYPICAL CUT AT RECEPTION DESK - HIGH COUNTER SURFACE</p>

Sketch A9
 Bid Package 6929-07
 Addendum 03
 New Detail K10/A601



<p>K13</p>	<p>SECTION DETAIL</p>
<p>SCALE: 3" = 1'-0"</p>	<p>TOP OF COUNTER AND BASE OF WALL DETAIL - TYPICAL RECEPTION DESKS</p>

Sketch A10
 Bid Package 6929-07
 Addendum 03
 New Detail K13/A601



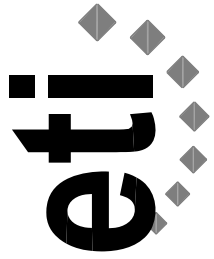
SHEET NOTES

- 11. 6" DIA. CEILING DIFFUSER (CD), 100 CFM. EXTEND 6" DIA. DUCT AS SHOWN.
- 19. 6" DIA. CEILING DIFFUSER (CD), 130 CFM. EXTEND 7" DIA. DUCT AS SHOWN.

**LPS DISTRICT OFFICE
SECOND FLOOR PLAN - HVAC**

SCALE: 1/8" = 1'-0"

ADDENDUM #3



Engineering Technologies Inc.
 Mechanical & Electrical Building Solutions
 825 M Street, Suite 200 | Lincoln, NE 68508
 P 402.476.1273 | F 402.476.1274
 4559 South 133rd Street | Omaha, NE 68137
 P 402.330.2772 | F 402.330.2630
 ETI Project No: (2011-132)

08/17/2012

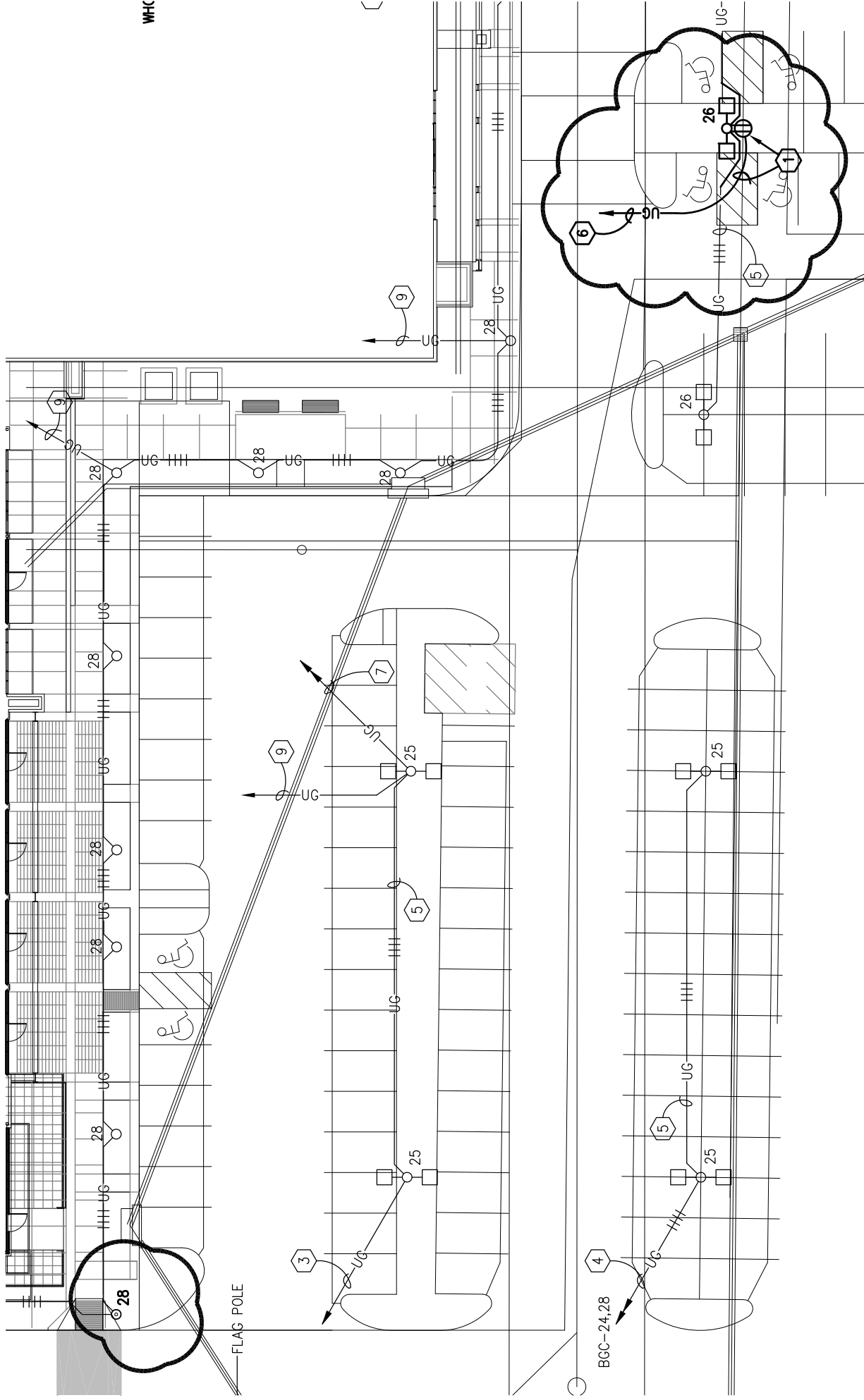
SHEET

M202

ATTACHMENT NO.

M1

TLD

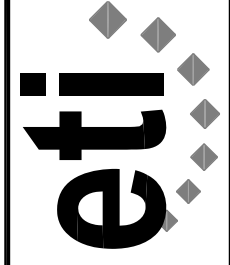


WHC

LPS DISTRICT OFFICE
SITE PLAN - MECHANICAL
AND ELECTRICAL

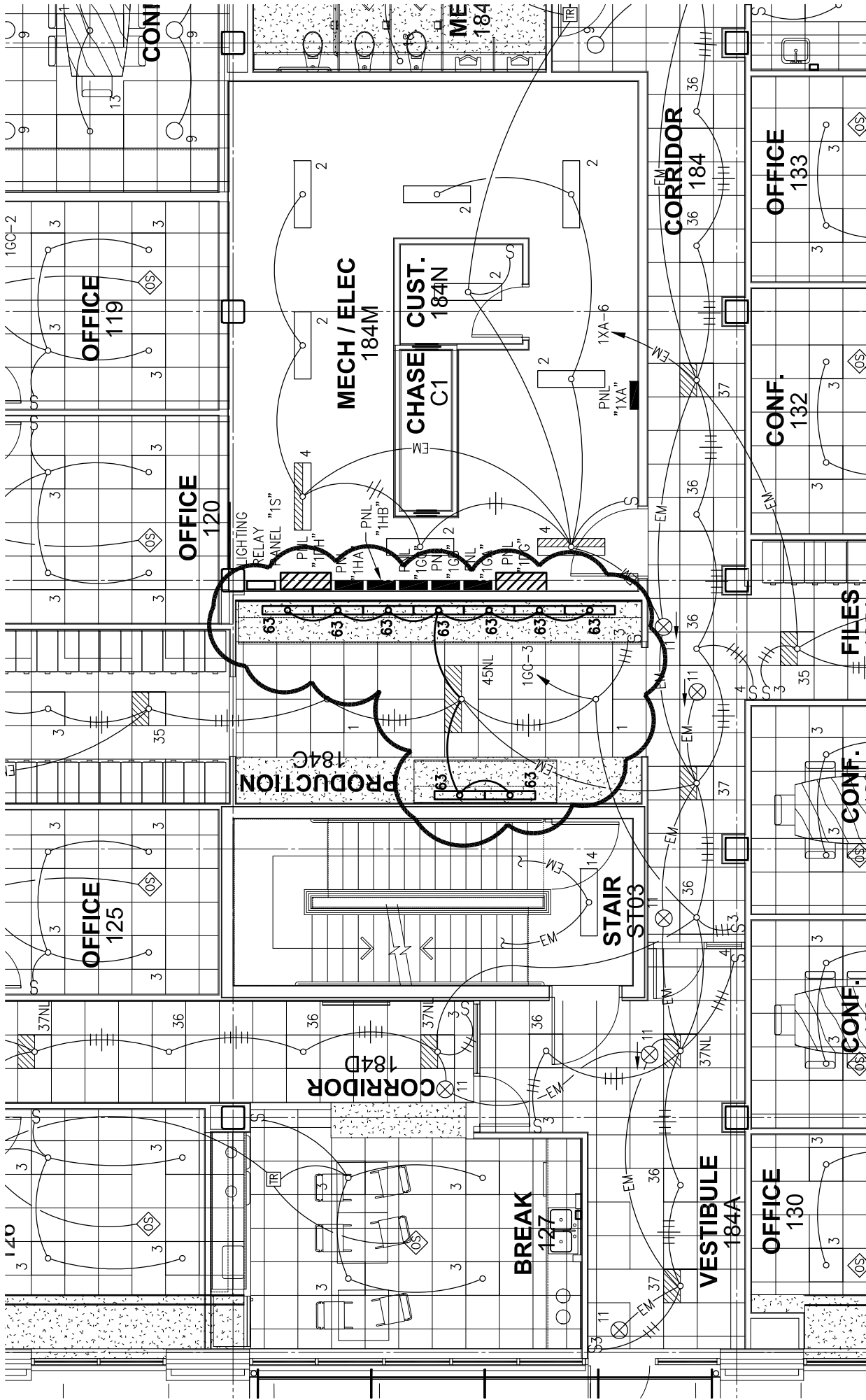
SCALE: 1" = 30'-0"

ADDENDUM #3



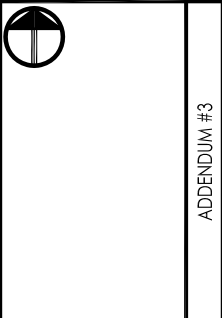
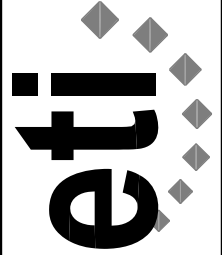
Engineering Technologies Inc.
 Mechanical & Electrical Building Solutions
 825 M Street, Suite 200 | Lincoln, NE 68508
 P 402.476.1273 | F 402.476.1274
 4559 South 133rd Street | Omaha, NE 68137
 P 402.330.2772 | F 402.330.2630
 ETI Project No.: (2011-132)

08/17/12
SHEET
ME001
ATTACHMENT NO.
EI
BJF

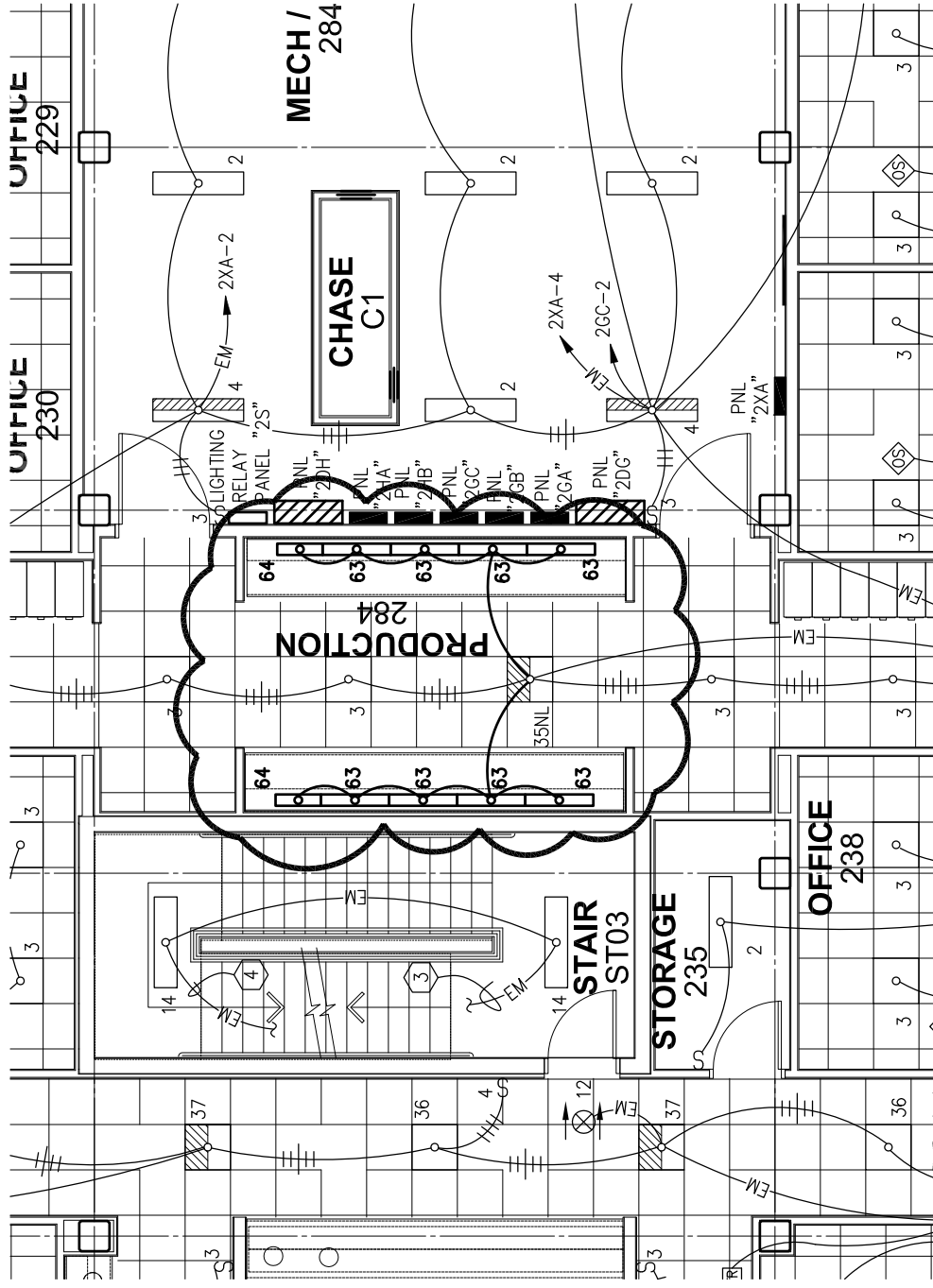


08/17/12
SHEET
E101
ATTACHMENT NO.
E2
BJF

Engineering Technologies Inc.
 Mechanical & Electrical Building Solutions
 825 M Street, Suite 200 | Lincoln, NE 68508
 P 402.476.1273 | F 402.476.1274
 4559 South 133rd Street | Omaha, NE 68137
 P 402.330.2772 | F 402.330.2630
 ETI Project No: (2011-132)

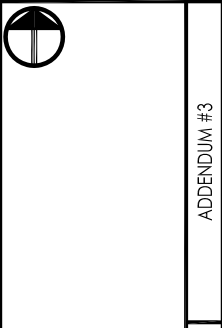
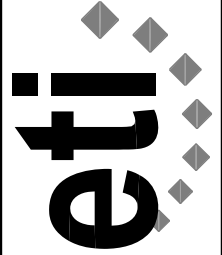


LPSDO
FIRST FLOOR PLAN - LIGHTING
 SCALE: 1/8" = 1'-0"
 APPENDUM #3



08/17/12
SHEET
E102
ATTACHMENT NO.
E4
BJF

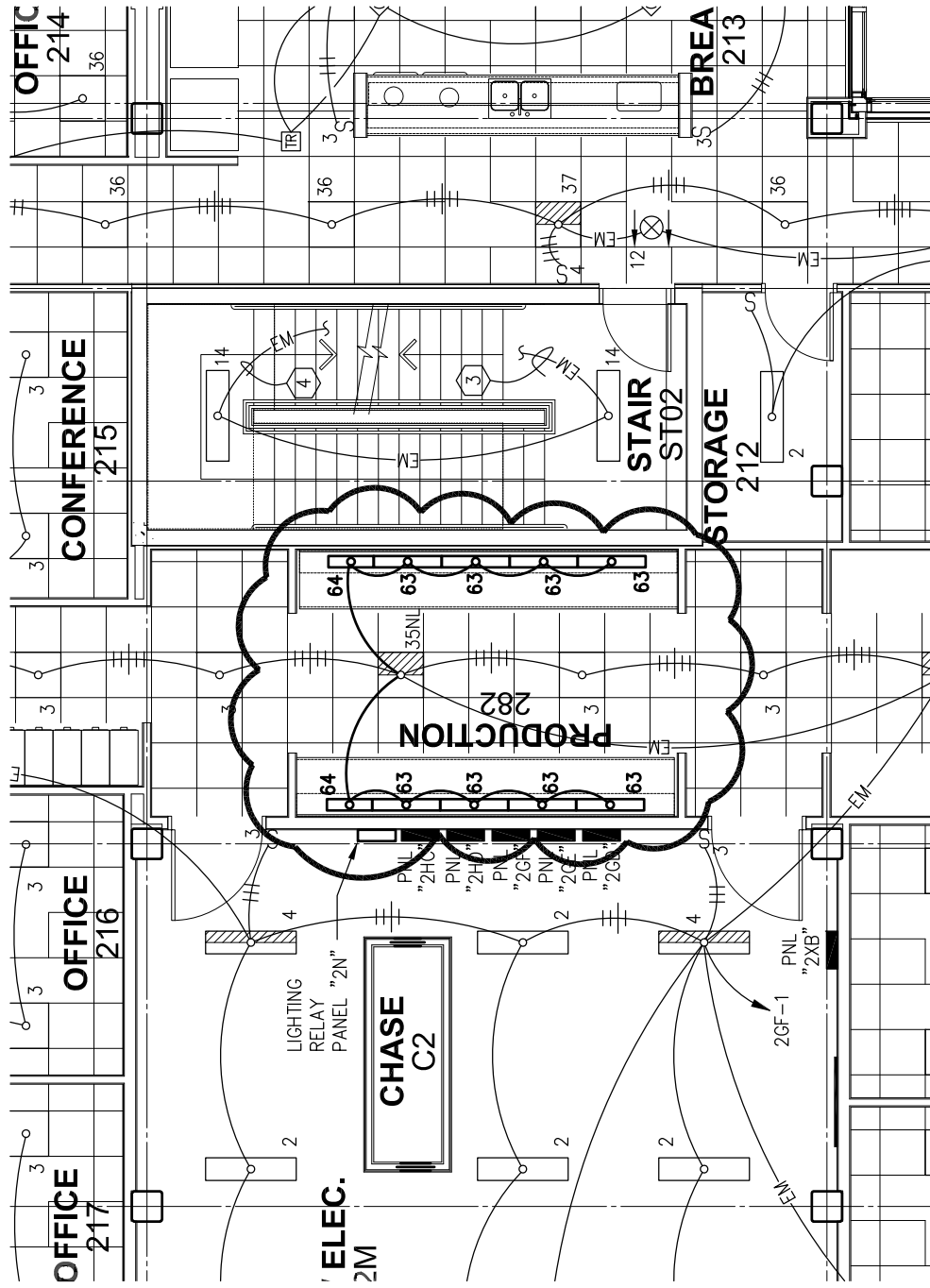
Engineering Technologies Inc.
 Mechanical & Electrical Building Solutions
 825 M Street, Suite 200 | Lincoln, NE 68508
 P 402.476.1273 | F 402.476.1274
 4559 South 133rd Street | Omaha, NE 68137
 P 402.330.2772 | F 402.330.2630
 ETI Project No: (2011-132)



LPSDO
SECOND FLOOR PLAN - LIGHTING

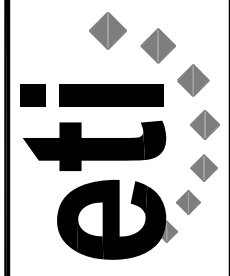
SCALE: 1/8" = 1'-0"

ADDENDUM #3



08/17/12
 SHEET
E102
 ATTACHMENT NO.
E5
 B.J.F.

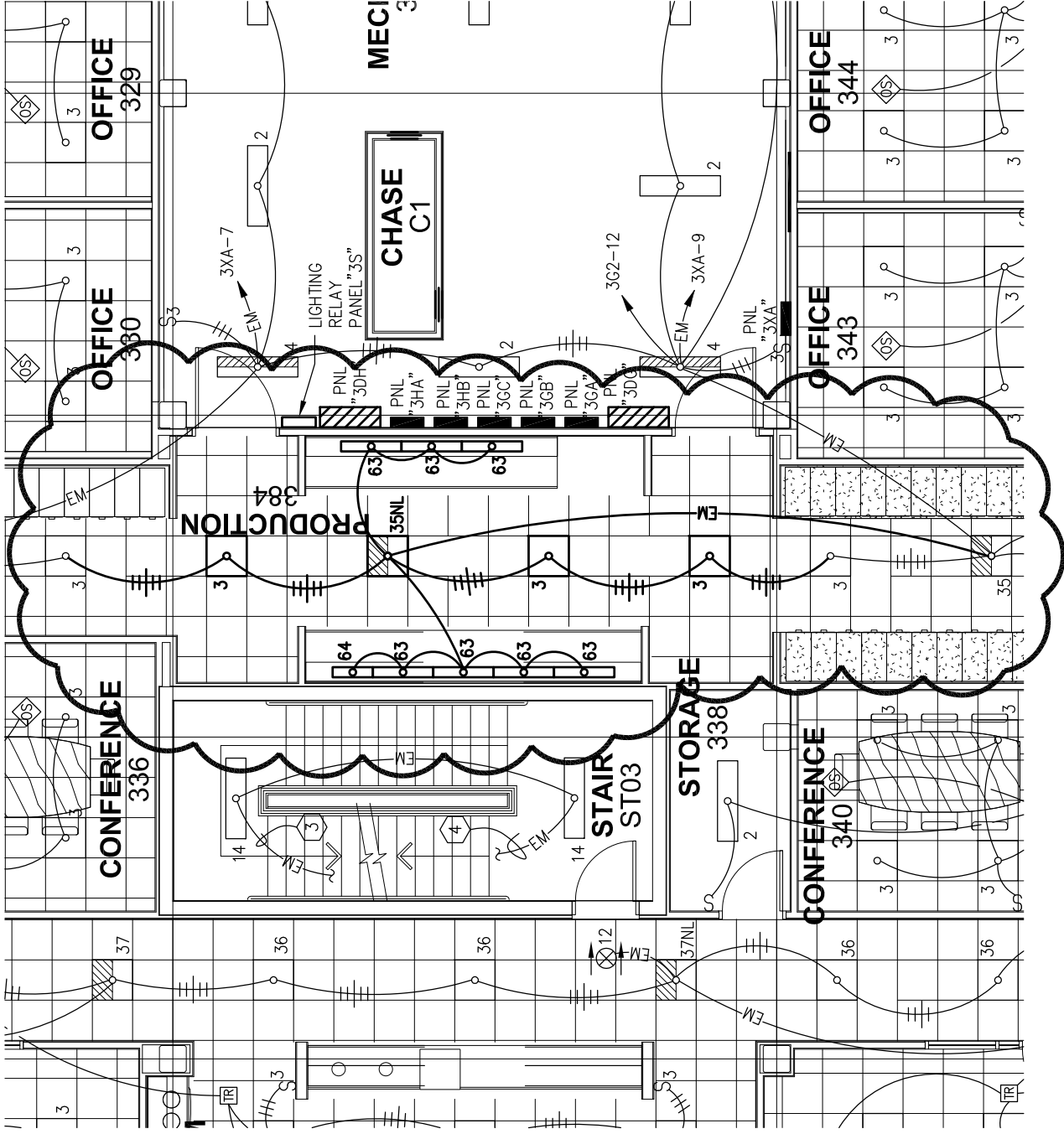
Engineering Technologies Inc.
 Mechanical & Electrical Building Solutions
 825 M Street, Suite 200 | Lincoln, NE 68508
 P 402.476.1273 | F 402.476.1274
 4559 South 133rd Street | Omaha, NE 68137
 P 402.330.2772 | F 402.330.2630
 ETI Project No: (2011-132)



LPSSDO
SECOND FLOOR PLAN - LIGHTING

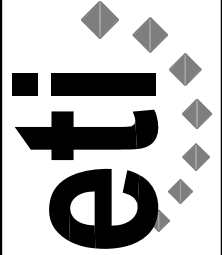
ADDENDUM #3

SCALE: 1/8" = 1'-0"



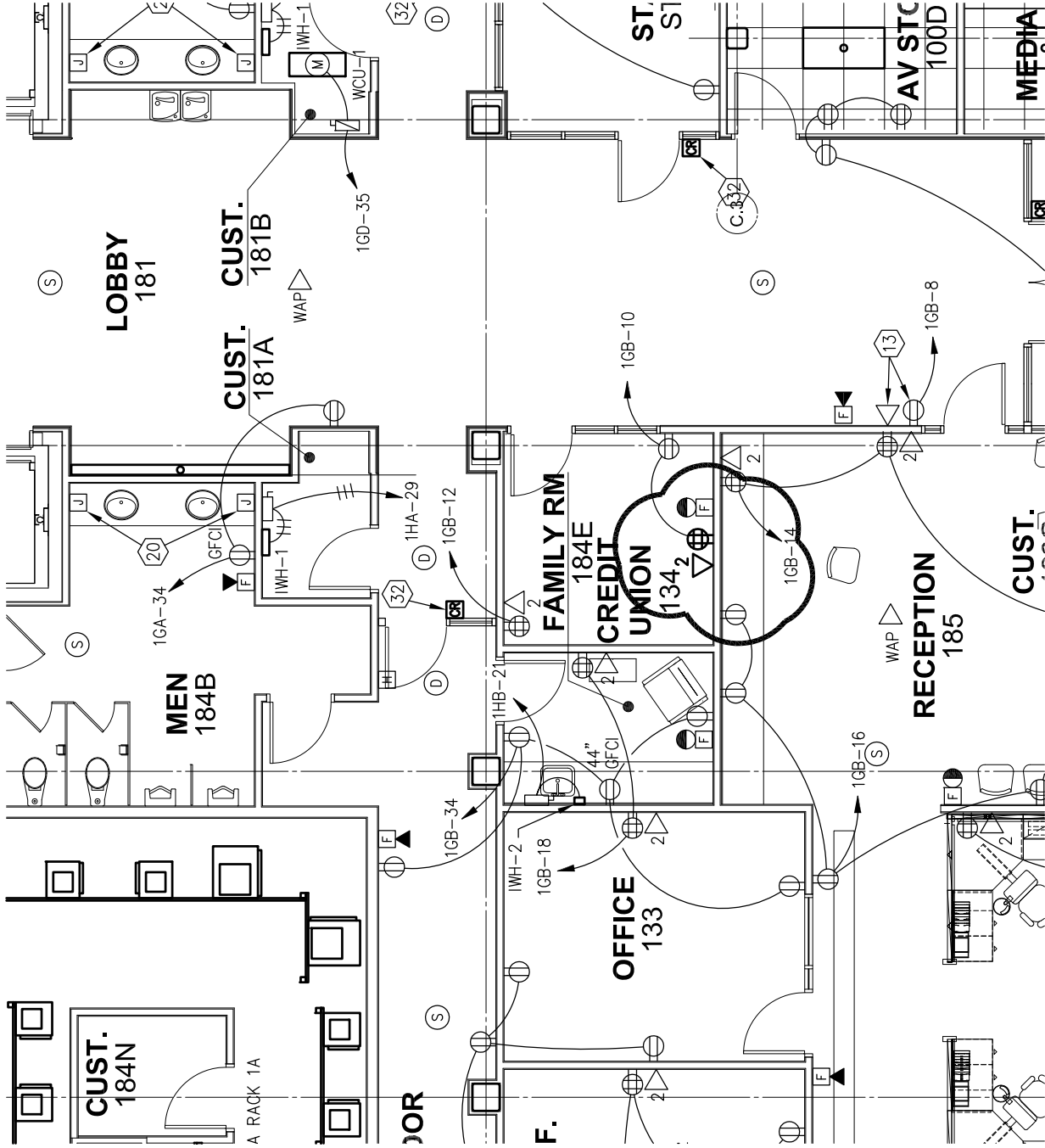
08/17/12
SHEET
E103
ATTACHMENT NO.
E6
B.J.F.

Engineering Technologies Inc.
 Mechanical & Electrical Building Solutions
 825 M Street, Suite 200 | Lincoln, NE 68508
 P 402.476.1273 | F 402.476.1274
 4559 South 133rd Street | Omaha, NE 68137
 P 402.330.2772 | F 402.330.2630
 ETI Project No: (2011-132)



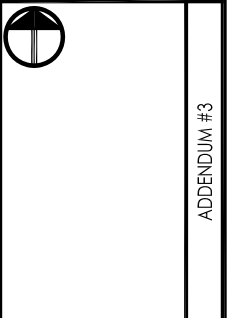
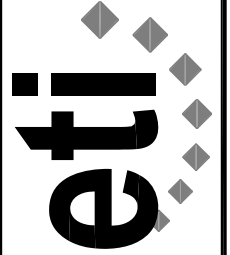
LPSDO
THIRD FLOOR PLAN - LIGHTING

SCALE: 1/8" = 1'-0"
 APPENDUM #3

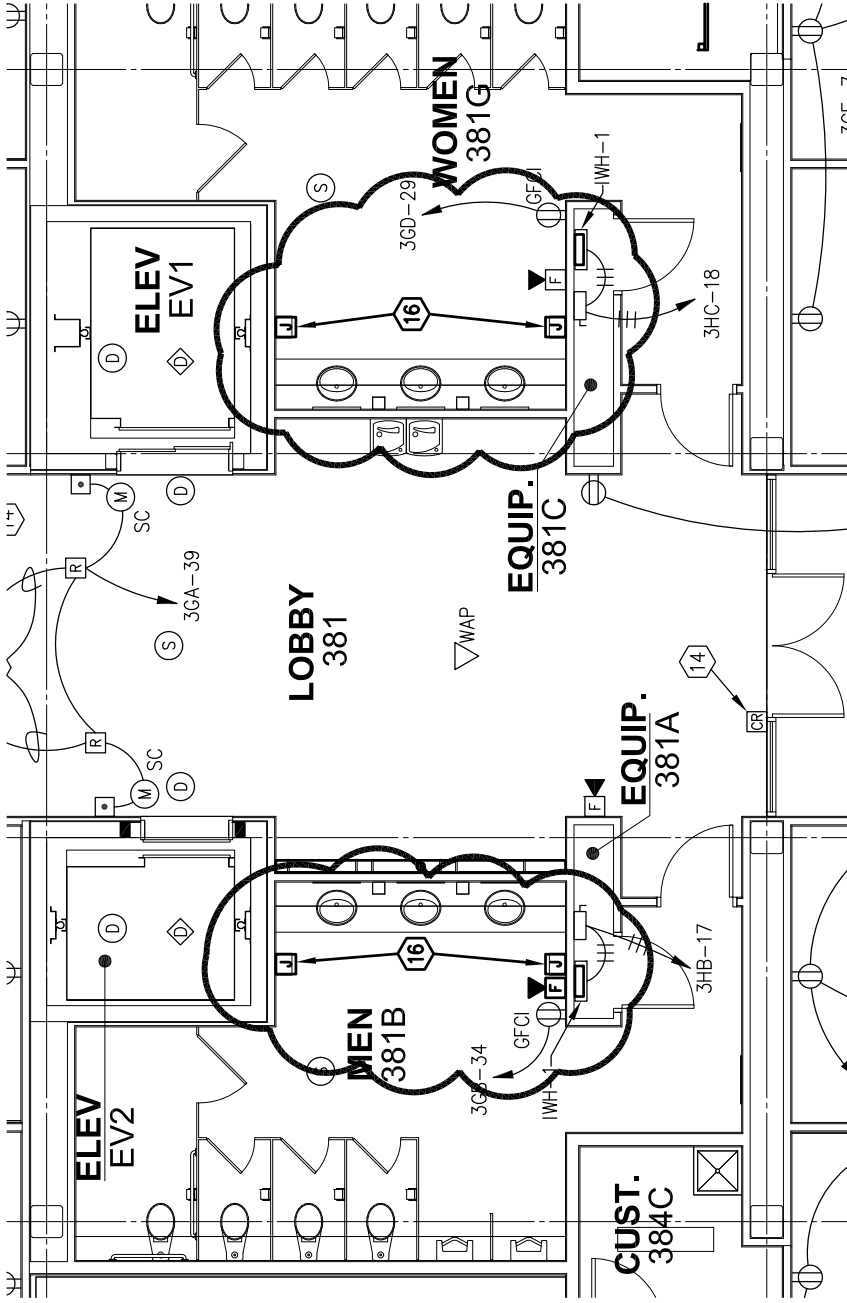


08/17/12
SHEET
E201
ATTACHMENT NO.
E8
B.J.F.

Engineering Technologies Inc.
 Mechanical & Electrical Building Solutions
 825 M Street, Suite 200 | Lincoln, NE 68508
 P 402.476.1273 | F 402.476.1274
 4559 South 133rd Street | Omaha, NE 68137
 P 402.330.2772 | F 402.330.2630
 ETI Project No: (2011-132)



LPSDO
FIRST FLOOR PLAN - ELECTRICAL
 SCALE: 1/8" = 1'-0"
 APPENDUM #3

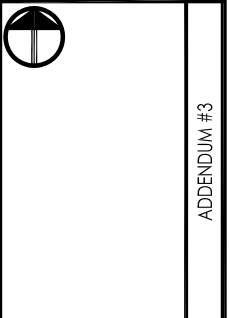
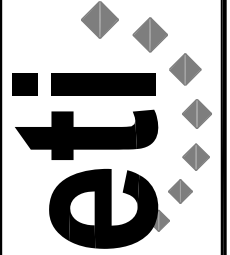


SHEET NOTES

16. PROVIDE J-BOX BEHIND PAPER TOWEL DISPENSER WITH 3/4" CONDUIT STUBBED UP TO ABOVE ACCESSIBLE CEILING TOWARDS NEAREST PANEL.

08/17/12
SHEET
E203
ATTACHMENT NO.
E9
B.J.F.

Engineering Technologies Inc.
 Mechanical & Electrical Building Solutions
 825 M Street, Suite 200 | Lincoln, NE 68508
 P 402.476.1273 | F 402.476.1274
 4559 South 133rd Street | Omaha, NE 68137
 P 402.330.2772 | F 402.330.2630
 ETI Project No: (2011-132)



LPSDO
THIRD FLOOR PLAN - ELECTRICAL

SCALE: 1/8" = 1'-0"

APPENDUM #3