

This addendum is issued by the Owner to all known bidders prior to receipt of Proposal. Bidders shall acknowledge receipt of this Addendum by so indicating on the Proposal Form. All information and instruction given herein shall become a part of the Contract Documents.

This addendum contains the following information:

Addendum #1	(8 ½ x 11)	09 Sheets
Supplemental Drawing AD03 (A1)	(8 ½ x 11)	01 Sheet
Supplemental Drawing AD04 (A1)	(8 ½ x 11)	01 Sheet
Unit Matrix spreadsheet	(8 ½ x 11)	01 Sheet
Supplemental Drawing M1.00c	(8 ½ x 11)	01 Sheet
Supplemental Drawing M1.01a	(8 ½ x 11)	01 Sheet
Supplemental Drawing M1.04b-M1.04c	(8 ½ x 11)	02 Sheets
Supplemental Drawing M2.00b	(8 ½ x 11)	01 Sheet
Supplemental Drawing M3.04a	(8 ½ x 11)	01 Sheet
Supplemental Drawing M4.01a	(8 ½ x 11)	01 Sheet
Supplemental Drawing M4.05a	(8 ½ x 11)	01 Sheet
Supplemental Drawing M4.10a	(8 ½ x 11)	01 Sheet
Supplemental Drawing M4.11a-M4.11c	(8 ½ x 11)	03 Sheets
Supplemental Drawing M5.01a	(8 ½ x 11)	01 Sheet
Supplemental Drawing M5.03a	(8 ½ x 11)	01 Sheet
Supplemental Drawing M5.04a	(8 ½ x 11)	01 Sheet
Supplemental Drawing M6.01a	(8 ½ x 11)	01 Sheet
Supplemental Drawing M6.03a	(8 ½ x 11)	01 Sheet
Supplemental Drawing M7.01a	(8 ½ x 11)	01 Sheet
Supplemental Drawing FP1.00a-FP1.00d	(8 ½ x 11)	04 Sheets
Supplemental Drawing E1.07a	(8 ½ x 11)	01 Sheet
Supplemental Drawing E2.00a	(8 ½ x 11)	01 Sheet
Supplemental Drawing E5.05b	(8 ½ x 11)	01 Sheet
	<b>Total</b>	<b>37 Sheets</b>

If this addendum appears incomplete, notify the architect immediately.

## GENERAL ITEMS

1. Please see plan drawings and interior elevations for finish indications for each room. All tags refer to the Finish Index in the specification.
2. See sheet G0.0 for unit matrix and general notes. Unit matrix is also attached to this addendum for clarification.

## PROJECT MANUAL

### ARCHITECTURAL SPECIFICATIONS

1. Section 07 2000 THERMAL PROTECTION. Page 03, Section 2.31-A-2. Revise item b.  
"CERTAINTEED Sustainable Insulation to meet or exceed all specification requirements".

2. Section 07 6200 SHEET METAL FLASHING AND TRIM. Section 2.2. Remove Formed Cap flashing from specification. Section 2.2 to be 'NOT USED'
3. Section 08 4113 ALUMINUM FRAMED ENTRANCES AND STOREFRONTS. Page 03, Section 2.1-A-1-b. Add item 5) "TUBELITE TO MEET ALL REQUIREMENTS IN THE SPECIFICATION".
4. Section 08 7100 DOOR HARDWARE. Page 06, Section 2.3-A-1-a. Add item 2) "Hardware must match light Bronze or US10 finish".
5. Section 09 5123 ACOUSTICAL TILE CEILINGS. Page 03, Section 1.2-A. Revise to include the following: "Product: Refer to Interior Finishes Index. **Provide High Recycled Content tile with minimum post consumer + ½ Post Industrial recycled content of 50%**".
6. Section 09 2116 GYPSUM BOARD ASSEMBLIES. Page 09, Section 3.7-G. Revise as follows:
  - G. For substrates indicated to receive thin-set ceramic tile and similar rigid applied wall finishes including mincey wall panels, comply with the following:
    1. Tile Backing Panels **and Mincey Wall Panels:**
      - a. **Glass-Mat, Water-Resistant Backing Panel: Comply with manufacturer's written installation instructions and install at showers, tubs, and where indicated to receive tile or mincey panels.** Install with ¼ inch gap where panels abut other construction or penetrations.
      - b. Guestroom Bath Areas, **public Bathrooms, Commercial Kitchen, Laundry areas and as indicated in Basement for bottom of walls** (Not Subject to Wetting): Install Glass-Mat, Mold & Mildew Resistant Interior Wall Panel to product a flat surface except at locations to receive water-resistant backing panels.
      - c. All Other Areas Not Subject to Wetting: Install standard gypsum wallboard panels to product a flat surface, except at locations to receive water-resistant backing panels or Glass-Mat, Mold & Mildew Resistant Wall Panels.
      - d. Where tile backing panels abut other types of panels in the same plane, shim surface to produce a uniform plane across panel surfaces.
7. Section 09 2116 GYPSUM BOARD ASSEMBLIES. Page 07, Section 2.3B-2. Add item g. 'American Gypsum' to meet all other requirements of this section.
8. Section 09 2116 GYPSUM BOARD ASSEMBLIES. Page 07, Section 2.C-2. Add item c. "E2ep Extreme"; National Gypsum Company.
9. Section 09 2116 GYPSUM BOARD ASSEMBLIES. Page 08, Section 2.3D-3. Add item c. "E2xp Tile Backer"; National Gypsum Company.

#### MECHANICAL SPECIFICATIONS

1. Section 21 1000 FIRE SUPPRESSION SYSTEMS

- a. Page 21 1000-4, Subparagraph 2.2, A ADD
    - i. " 2. Fire and Jockey pump discharge piping, Fire Pump test heater, and Standpipes with pressure above 175 psi shall be Schedule 40 pipe"
  - b. Page 21 1000-4, Subparagraph 2.3, C ADD
    - i. " Vestibules shall have dry type sprinkler heads"
  - c. Page 21 1000-4, ADD
    - i. "2.4 LISTED FIRE –PROTECTION VALVES
      - 1. Gate Valves with Indicator Post:
        - a. Indicator Post: UL 789, Vertical free standing, cast –iron body, with opening wrench, extension rod, locking device, and cast-iron barrel with supervisory switch"
  - d. Page 21 1000-4, ADD
    - i. "2.5 FIRE DEPARTMENT CONNECTIONS
      - 1. Exposed, Freestanding-Type, Fire Department Connections: UL 405, 175-psig minimum pressure rating, with corrosion-resistant-metal body, brass inlets with threads according to NFPA 1963 and matching local fire department sized and threads, and bottom outlet with pipe threads. Include brass lugged caps, gaskets, and brass chains; brass lugged swivel connection and drop clapper for each hose connection inlet: 18 inch high, brass sleeve and round floor brass escutcheon plate with marking " AUTO SPKR & STANDPIPE"
        - a. Finish Including Sleeve: Rough Brass"
2. Section 22 4000 PLUMBING FIXTURES
- a. Page 22 4000-5, Subparagraph 2.8 A, ADD
    - i. " Reference Residence Inn (Marriott) plumbing fixture matrix and plumbing fixture schedules"
  - b. Page 22 4000-5, Subparagraph 2.8 A, 3, ADD
    - i. " Provide loose-key type stops for all sinks "SNK-XX" and water all closets "WCL-XX"
  - c. Page 22 4000-5, Subparagraph 2.9 A, ADD
    - i. Reference Residence Inn (Marriott) plumbing fixture matrix and plumbing fixture schedules"
4. Section 23 0700 DUCT INSULATION
- a. Page 230700-5, subparagraph K1 CHANGE
    - i. Service OUTSIDE AIR and Mixed Air, Rectangular, ALL
      - 1. Thickness / Material: 2" Mineral-fiber blanket.
      - 2. Minimum R-Value: R5
      - 3. Vapor Retarder Required: Yes
  - b. Page 230700-5, ADD
    - N. Service: OUTSIDE AIR / EXHAUST AIR ON ROOF
      - a. Thickness / Material: 2" mineral-fiber board
      - b. Minimum R-Value: R-8
      - c. Vapor Retarder Required: Yes
      - d. Jacket: Alumaguard
5. Section 23 0993 SEQUENCE OF OPERATION FOR HVAC CONTROLS

- a. Page23 0993-10, ADD
  - " 1.12 STAIRWELL PRESSURIZATION SYSTEM (North and South stairs)
    - i. Stairwell pressurization fans are normally in a non-operating status.
    - ii. Upon any signal from the fire alarm panel (initiated by any system smoke detector, sprinkler flow switch or manual pull stations) the stairwell pressurization system is activated as follows;
      1. Fans isolation damper opens (actuator runtime fully closed to fully open 30 seconds)
      2. Fans start and associated variable frequency drive controls fan speed with stair well pressure sensor. (coordinate locations in field)
      3. Stairwell pressure is maintained 0.05 in w.c. across each closed corridor exit door. The pressure differential across doors shall not exceed that which allows the door to begin to be opened by a force of 30 lbf in accordance with NFPA 101 Life Safety Code.
    - iii. Relief Damper: modulate relief damper as required to maintain stair pressurization settings.
      - a. Actuator runtime fully closed to fully open 30 seconds
    - iv. Temperature control contractor shall test stairwell pressurization systems prior to system commissioning."

## DRAWINGS

### ARCHITECTURAL DRAWINGS

1. Sheet A1.11:
  - a. Revise keyed note #A18 to include minimum value of **R-24** in lieu of R-20.
  - b. Revise Keyed note #A78 to include **20" x 20" paver in color White Black to meet SRI 79.**
2. Sheet A1.12:
  - a. Plans K15/A1.12 and V1/A1.12. Add keyed note #18 to all roof areas. Revise keyed note #A18 to include minimum value of **R-24** in lieu of R-20.
  - b. Revise Keyed note #A78 to include **20" x 20" paver in color White Black to meet SRI 79.**
3. Sheet A1.032:
  - a. Plan V1/A1.032. Revise keyed notes #36 in Laundry 038 to be Keyed notes #38.
4. Sheet A1.041:
  - a. Plan V1/A1.041. Revise ceiling plan in Guest Fitness 044 per attached Supplemental Drawings.
5. Sheet A1.130:
  - a. Plan V1/A1.130. At Fire Command 157, All new walls to be Type R4-2A in lieu of P4A and F4.

6. Sheet A1.140:
  - a. Plan V1/A1.140. Revise Plan at Bellman's Closet per attached Supplemental Drawings
7. All Suites with Showers:
  - a. Plans H17/A1.404, G17/A4.12, H17/A4.22, M13/A1001.1, G15/A1.1108, H17/A1.1112, V17/A1.1200.1. Add Keyed note a24 "PROVIDE GLASS SHOWER DOOR WITH SIDELIGHT AND TOWEL BAR PULL PER SPECIFICATION. SEE DETAILS ON SHEET A5.30. RETURN MINCEY PANELS AT JAMBS OF OPENING PER DETAILS."
8. Suite Plans A1.404,A1.406,A1.426,A1.1112:
  - a. On Architectural plans, all walls between restrooms and dressing areas in these suites to be type P2A.
9. HC Suite Plans A1.206, A1.212.1:
  - a. On Architectural plans at showers, add Keyed Note #a25 "AT HC SHOWERS, REMOVE EXISTING CONCRETE TOPPING FOR INSTALLATION OF SHOWER BASE FLUSH WITH FLOOR"
10. Sheet A1.1001.1:
  - a. M1/A1.1001.1. Add Keyed notes p01,p02,p03 to the Shower.
11. Sheet A1.1001.1:
  - a. M1/A1.1001.1. Add Keyed notes p01,p02,p03 to the Shower.
12. Sheet A2.3:
  - a. Elevation V5/A2.3. Remove keyed note L47 and associated opening.
13. SHEET A5.30
  - a. Detail E1/A5.30 – Add note: "AT RATED WALLS, ADDITIONAL SUBSTRATE IS REQUIRED OVER RATED WALL SYSTEM. WALL BOARD IN LAYERS AS REQUIRED IS TO BE COMPLETE FOR RATED SYSTEM PRIOR TO INSTALLATION OF SHOWER WALL SUBSTRATE"
  - b. Detail E8/A5.30 – Add note: "PROVIDE MINCEY PANEL RETURN AT HINGE SIDE TO MATCH PANELS IN SHOWER. SHOWER WALL PANEL AT SIDELIGHT JAMB TO EXTEND TO FACE OF WALL AS SHOWN. MINCEY MATERIAL TO EXTEND TO FINISHED FLOOR OUTSIDE OF SHOWER BASE"
14. SHEET A5.41
  - a. Detail V9/A5.41 – Revise blocking note at head and jamb to read "CONT. BLOCKING **AND BREAK METAL** WITH BACKER ROD AND SELANT AT ALL SIDES."
15. SHEET A6.20
  - a. Door Schedule - Suites. All doors indicated as BA, BD, CL and SL are to be 1-3/8" Doors. Revise hinge size and track sizes in hardware sets to accommodate. Match specified quality and finish.
  - b. Door Schedule – Public. All HM and WD doors to be 1-3/4" doors. Remove all 2" thicknesses and replace with 1-3/4".

STRUCTURAL DRAWINGS

a. **None Required.**

MECHANICAL DRAWINGS

1. Sheet M1.00 BASEMENT FLOOR PLAN-HVAC AND MISCELLANEOUS PIPING
  - a. Storage and Mechanical RM 042
    - i. Provide low leakage opposed blade motorized damper (size 38x16) in 38x14 outside air duct. Interlock damper operation with fan S-SF-2A operation. Provide 12x12 access door downstream for damper position inspection.
  - b. Linen Storage Depot 036
    - i. Provide fire damper in 18x10 outside air duct up. Damper shall be accessible from Linen Storage Depot.
  - c. See Sketch M1.00c
  
2. Sheet M1.01 FIRST FLOOR PLAN – HVAC AND MISCELLANEOUS PIPING
  - a. Kitchen Rm 143
    - i. Provide heat pump temperature sensor on east wall near door. Coordinate location in field
  - b. East Meeting Rm 134
    - i. Provide heat pump temperature sensor on west wall near door. Coordinate location in field.
  - c. Women's Rm 161
    - i. Provide low leakage opposed blade motorized damper (size 48x24) in 48x24 outside air duct. Interlock damper operation with fan S-SF-1A operation. Provide 12x12 access door downstream for damper position inspection.
  - d. Flag Note 6, ADD
    - i. "Wrap fire place type B-vent flue piping with 1-hr rated fire wrap from fireplace outlet to discharge exhaust fan. Install 3-M (or equal) fire wrap per manufacturers recommendations"
  - e. Market Rm. 151
    - i. Equipment number 624 (glass door merchandiser with remote cooler). Mount remote condenser unit above ceiling. Connect refrigerant piping from cooler to condensing unit complete. Install refrigerant piping per manufacturers recommendations.
    - ii. Equipment Number 626 (Glass Door Freezer). Mount remote condenser unit above ceiling. Connect refrigerant piping from cooler to condensing unit complete. Install refrigerant piping per manufacturers recommendations.
    - iii. 16/12 return air duct shall be open above ceiling. Install G-1 return air grille to provide air movement across remote condensing units (two) above ceiling.
  - f. See Sketch M1.01a
  
3. Sheet M1.04 TENTH FLOOR MEZZANINE AND ELEVENTH FLOOR PLAN – HVAC AND MISCELLANEOUS PIPING

- a. See Sketches M1.04b and M1.04c
4. Sheet M2.00 BASEMENT FLOOR PLAN – PLUMBING
  - a. See Sketch M2.00b
5. Sheet M3.04 TYPICAL FLOOR PLANS – HVAC AND MISCELLANEOUS PIPING
  - a. Detail V1, Suite 1200-Penthouse – HVAC and Misc. Piping, See Sketch M3.04a
6. Sheet M4.01 TYPICAL FLOOR PLANS – PLUMBING
  - a. See Sketch M4.01a
7. Sheet M4.04 TYPICAL FLOOR PLAN – PLUMBING
  - a. Detail V11 Suite 1200-Penthouse – Plumbing  
Change shower identification to SHR-03
8. Sheet M4.05 ENLARGED KITCHEN PLAN – PLUMBING
  - a. Detail V8 Enlarged Kitchen Plan
    - i. Janitor cleaning system next equipment KE15a. Delete reduced pressure backflow preventer and connect ½" cold water line into backflow preventer at mop sink.
  - b. See Sketch M4.05a
9. Sheet M4.10 DOMESTIC WATER RISER DIAGRAM
  - a. See Sketch M4.10a
10. Sheet M4.11 PLUMBING FIXTURE SCHEDULE
  - a. See Sketches M4.11a, M4.11b and M4.11c
11. Sheet M5.01 ENLARGED MECHANICAL ROOM PLANS
  - a. See Sketch M5.01a
12. Sheet M5.03 MECHANICAL SMOKE CONTROL RISER DIAGRAM
  - a. See Sketch M5.03a
13. Sheet M5.04 MECHANICAL SMOKE CONTROL RISER DIAGRAM
  - a. See Sketch M5.04a
14. Sheet M6.01 MECHANICAL DETAILS
  - a. See Sketch M6.01a
15. Sheet M6.03 MECHANICAL DETAILS
  - a. See Sketch M6.03a
16. Sheet M6.04 MECHANICAL DETAILS
  - a. Detail L19 GUEST ROOM MASTER SWITCH / THERMOSTAT – DETAIL  
ADD Note:

Thermostat and accessories by **INNCOM International, Inc. (860-739-4468)**

Qualification of Installer: Submit a letter signed by the Manufacture (INNCOM) stating that the installer is licensed by or acceptable to the Manufacturer for the integrated room automation system.

17. Sheet M7.01 MECHANICAL SCHEDULES
  - a. See Sketch M7.01a
18. Sheet FP1.00 FIRE PROTECTION PLAN
  - a. See Sketches FP1.00a, FP100b, FP100c and FP100d

#### ELECTRICAL DRAWINGS

1. SHEET E0.01, SITE UTILITY PLAN – ELECTRICAL.
  - a. Change fixture designation "G" to "P" at each pole light location (5) and in the Site Lighting Schedule.
2. SHEET E1.00, BASEMENT FLOOR PLAN – LIGHTING.
  - a. Provide fire alarm speaker strobe device on east wall and adjacent to the door of Laundry 041.
  - b. Provide fire alarm strobe light device by door in Changing Room 046.
  - c. Provide 120v connection to fire/smoke damper. Connect to dedicated circuit breaker in Panel "LSB." See detail N13/E6.02. See mechanical drawings for locations
3. SHEET E1.01, FIRST FLOOR PLAN – LIGHTING.
  - a. Provide exterior fire alarm speaker/strobe on exterior wall by door 130.
  - b. Provide fire alarm pull station next to entry station and door 154 in Reception 153.
  - c. Provide 120v connection to fire/smoke damper. Connect to dedicated circuit breaker in Panel "LSB." See detail N13/E6.02. See mechanical drawings for locations
4. SHEET E1.07, MECH LEVEL PLAN – ELECTRICAL.
  - a. Provide electrical connections to sump pump controllers per attached sketch sheet E1.07a.
  - b. Relocate electrical connections to motorized dampers per attached sketch sheet E1.07a.
5. Sheet E2.00, BASEMENT FLOOR PLAN – POWER
  - a. Provide revised electrical connection to SEP-1 in mechanical 022 per attached sketch sheet E2.00a.
  - b. Provide electrical connection to new EDH-2, ACCU-2/AC-2, and SP-1 per attached sketch sheet E2.0a.
6. SHEET E3.01, E3.02, E3.03, ENLARGED TYPICAL UNIT PLANS – ELECTRICAL.
  - a. Provide fire alarm strobe devices at each visual Hearing Impaired device location in units listed in flag note 7.
7. SHEET E5.01, ELECTRICAL SCHEDULES.

Downtown Omaha Residence Inn  
APMA Project #09001  
27 June 2012

- a. Delete "WITH GROUND FAULT PROTECTION" from switchboard schedule "MSBH."
- b. Provide revised breakers in Panel "ELB" per attached sketch sheet E5.05b
- c. Provide new third tub for Panel "HBA" and breakers per attached sketch sheet E5.05b.

**END OF ADDENDUM #2**

2

3

C18

8'-6"  
GYP. BD.

**GUEST  
FITNESS**

**044**

403

EQ.

ALIGN

E.Q.

EQ.

401

9'-0"  
ACT

8'-6"  
GYP. BD.

401

C05  
TYP.

1

TYP.

C05

V1

**BASEMENT NORTH REFLECTED CEILING PLAN**

**A1.041**

1/4" = 1'-0"

SHEET REFERENCE: A1.041

PROJECT NAME: Downtown Omaha Residence Inn

PROJECT NUMBER: 09001

DATE: 2012-06-27

DWG NO.

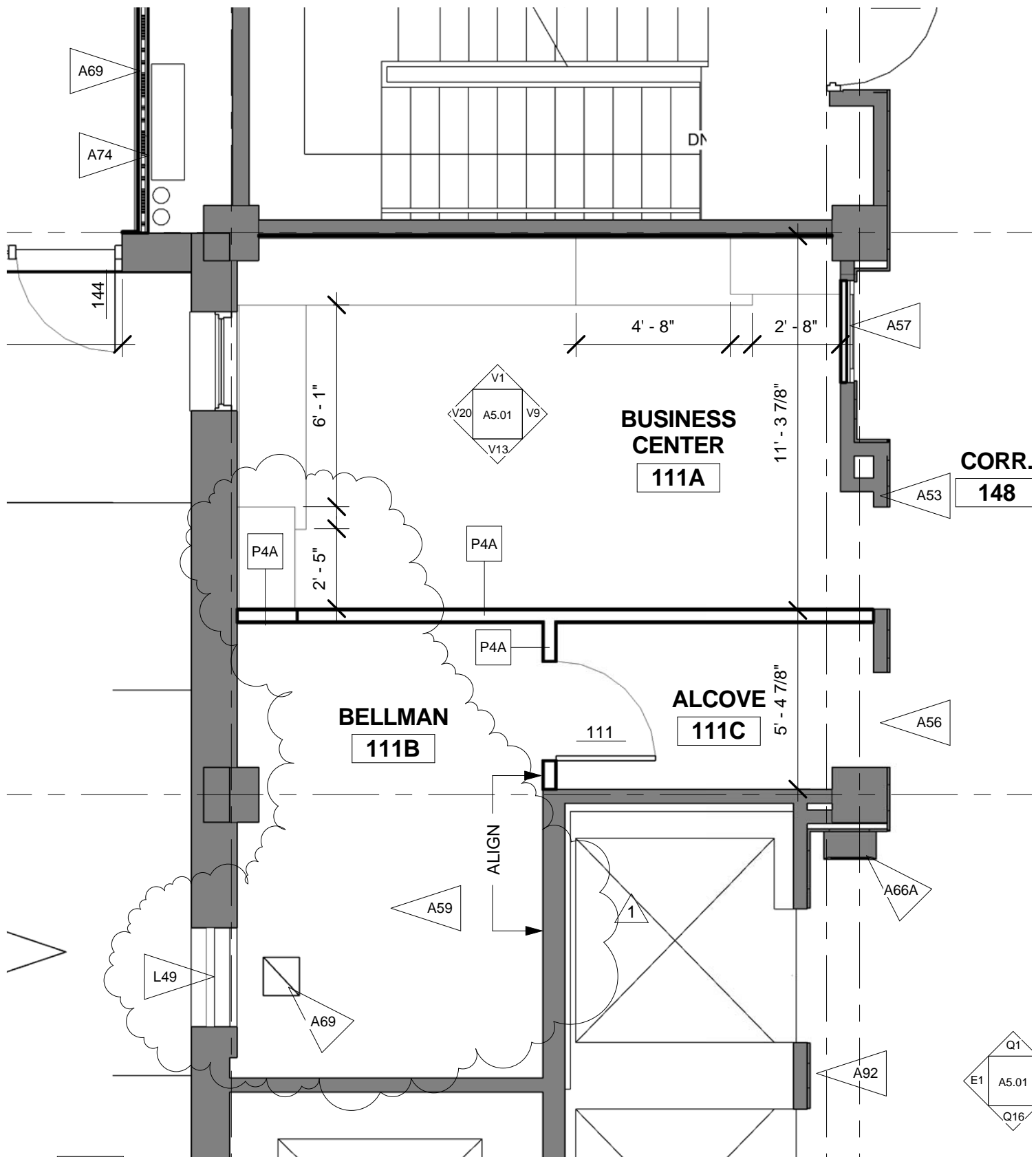
**AD03**

**A1**

ADDENDUM #2

**ALLEY-POYNER  
MACCHIETTO  
ARCHITECTURE**

1516 Cuming Street  
Omaha, NE 68102  
Ph: 402.341.1544  
Fx: 402.341.4735  
alleypoyner.com



**V1**  
**A1.140** FIRST FLOOR PUBLIC SPACES ENLARGED ARCHITECTURAL PLAN  
 1/4" = 1'-0"

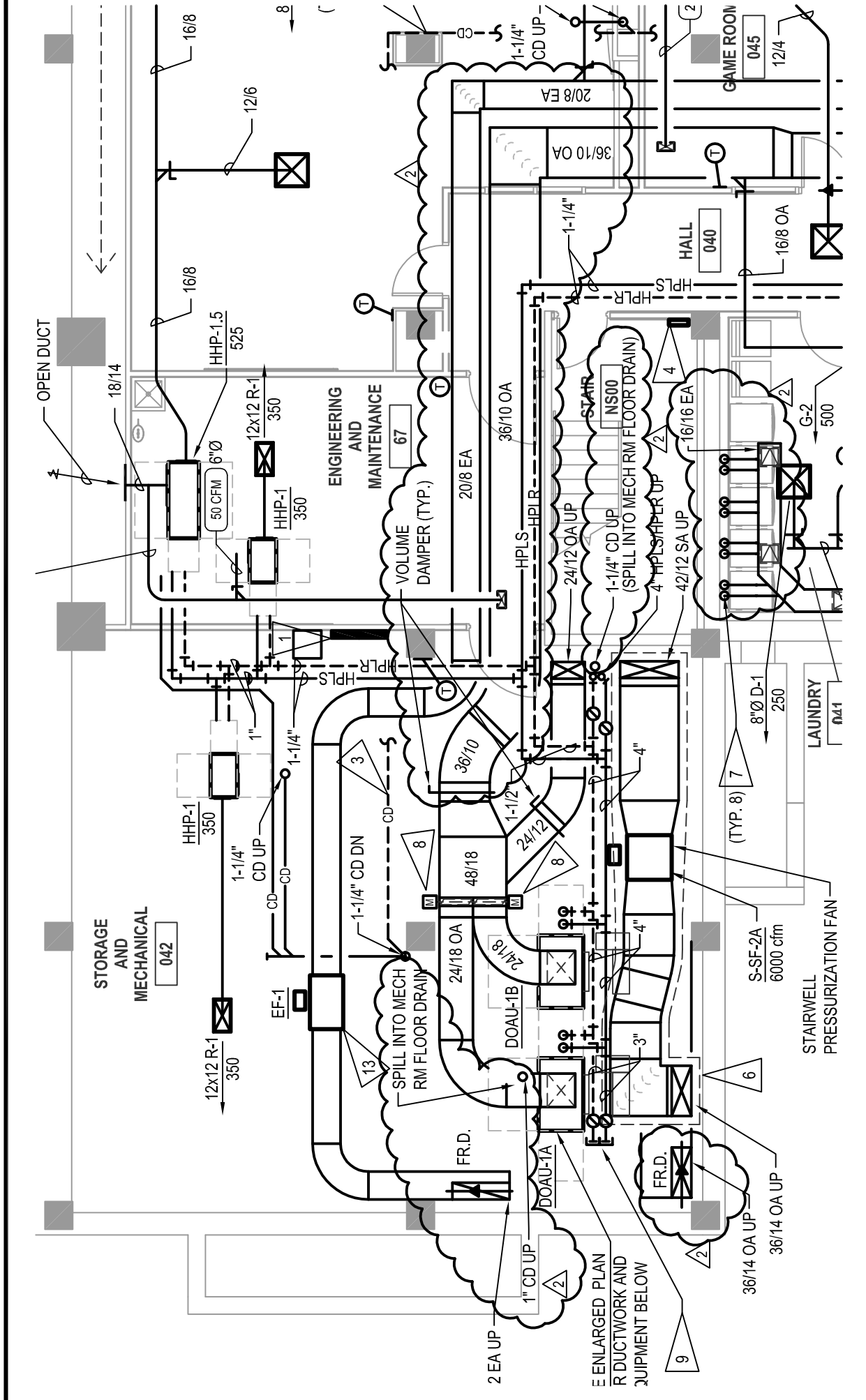
SHEET REFERENCE: A1.140		DWG NO. <b>AD04</b> <b>A1</b>	<b>ALLEY-POYNER          MACCHIETTO          ARCHITECTURE</b> 1516 Cuming Street Omaha, NE 68102 Ph: 402.341.1544 Fx: 402.341.4735 alleypoyner.com
PROJECT NAME: Downtown Omaha Residence Inn			
PROJECT NUMBER: 09001			
DATE: 2012-06-27			
<small>COPYRIGHT 2011 ALL RIGHTS RESERVED PRINTED OR ELECTRONIC DRAWINGS AND DOCUMENTATION MAY NOT BE REPRODUCED IN ANY FORM WITHOUT WRITTEN PERMISSION FROM ALLEY POYNER MACCHIETTO ARCHITECTURE</small>		ADDENDUM #2	

unit #	S.F.	2BED/2BATH	ACC. 2BED	KING 1BED	ACC. 1BED	KING STUDIO	QUEEN STUDIO	ACC. Q. STUDIO	Total Units	sheet ref.
	59393	5 3.29%	1 0.66%	19 12.50%	2 1.32%	70 46.05%	50 32.89%	5 3.29%	152	
200-500	403					4				A1.426 (mirror)
201-501	372						4			A1.425 (mirror)
601-1001	803	5								1001
202	570				1				ROLLIN SHWR.	A1.206
302-1002	365						8			A1.404
304-1004	368						8			A1.404
206	562				1					A1.206
306-1006	378						8			A1.406
208-1008	495			9						A1.408
210-1010	405					9				A1.412
211-1011	394						9			A1.411
212	817		1						ROLLIN SHWR.	A1.212.1 + A1.212.2
312-1012	405					8				A1.412
214-1014	405					8				A1.412(mirror)
216-1016	400					9				A1.412 (mirror)
218-1018	485			9						A1.408 (mirror)
220-620	400							5		A1.420
720-1020	400						4			A1.420
222-1022	379					9				A1.422
224-1024	374					9				A1.422
225-1025	372						9			A1.425
226-1026	413					9				A1.426
1108	458					1				A1.1108
1110	404					1				A1.1112 (mirror)
1112	403					1				A1.1112
1114	403					1				A1.1112 (mirror)
1116	489					1				A1.1108 (mirror)
1200	912			1						A1.1200.1+A1.1200.2

Note 1: Suites 801, 1001, 408, 508, 211, 611, 316, 1116, 720, 722, 526 and 926 will have modifications appropriate for the audio/visual impaired guests.

Note 2: The nine X20 queen studios communicate with the nine X22 king studios. These are the only communicating rooms on the property.

Note : Suites 211,316,408,420,508,526,611,720,722,801,926,1001,1116 are designed for the Visual and Hearing Impaired. See MEP for additional requirements.



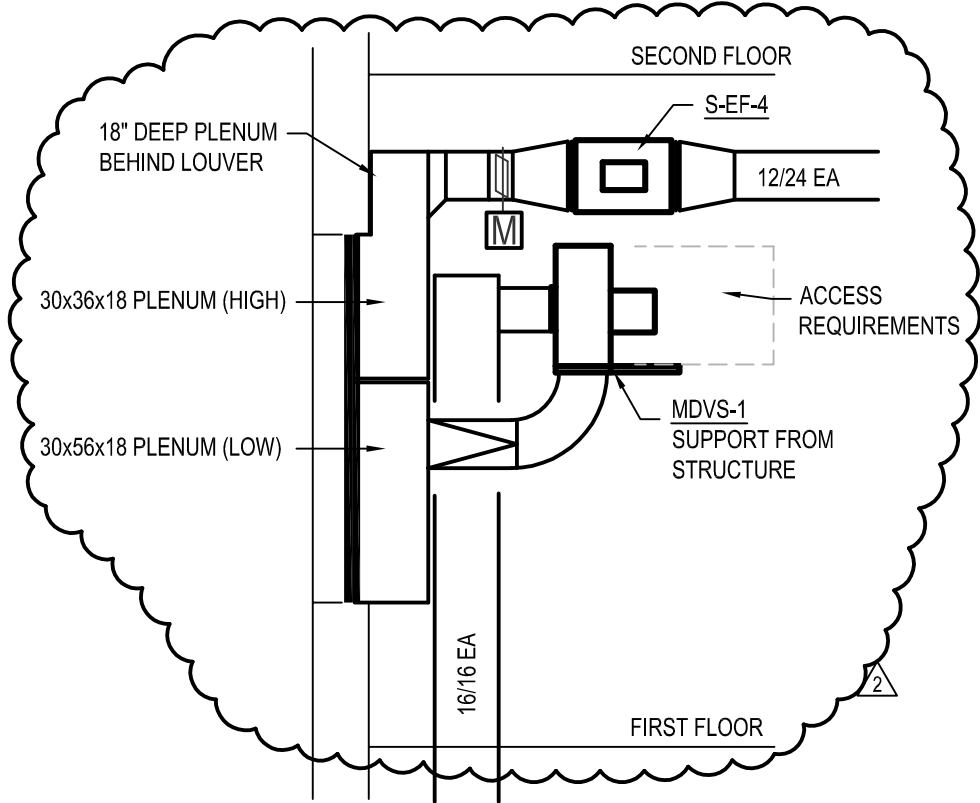
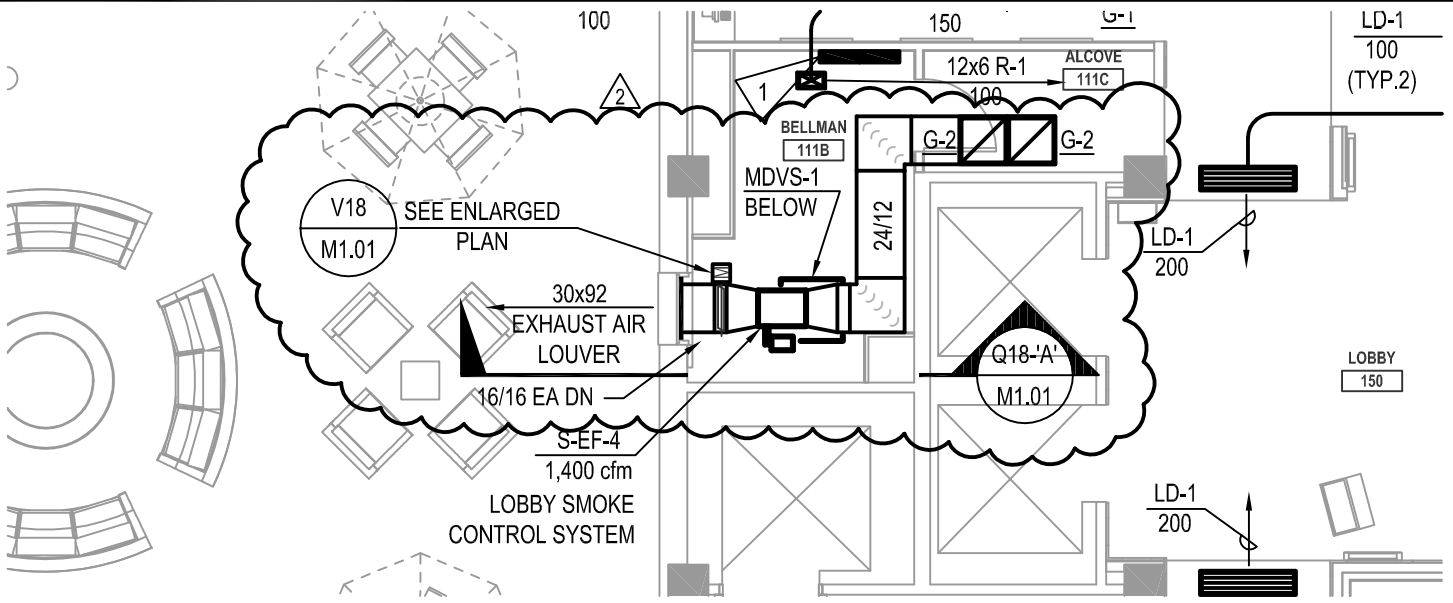
# Downtown Omaha Residence Inn by Marriott

**morrissey engineering inc**  
 mechanical | electrical | technology | commissioning  
 4940 North 118th Street  
 Omaha, NE 68164  
 P. 402.491.4144  
 www.morrisseyengineering.com

project no.:	11290	drawing referenced:	M1.00
date:	06-27-2012	addendum no.:	2

M1.00C

sketch



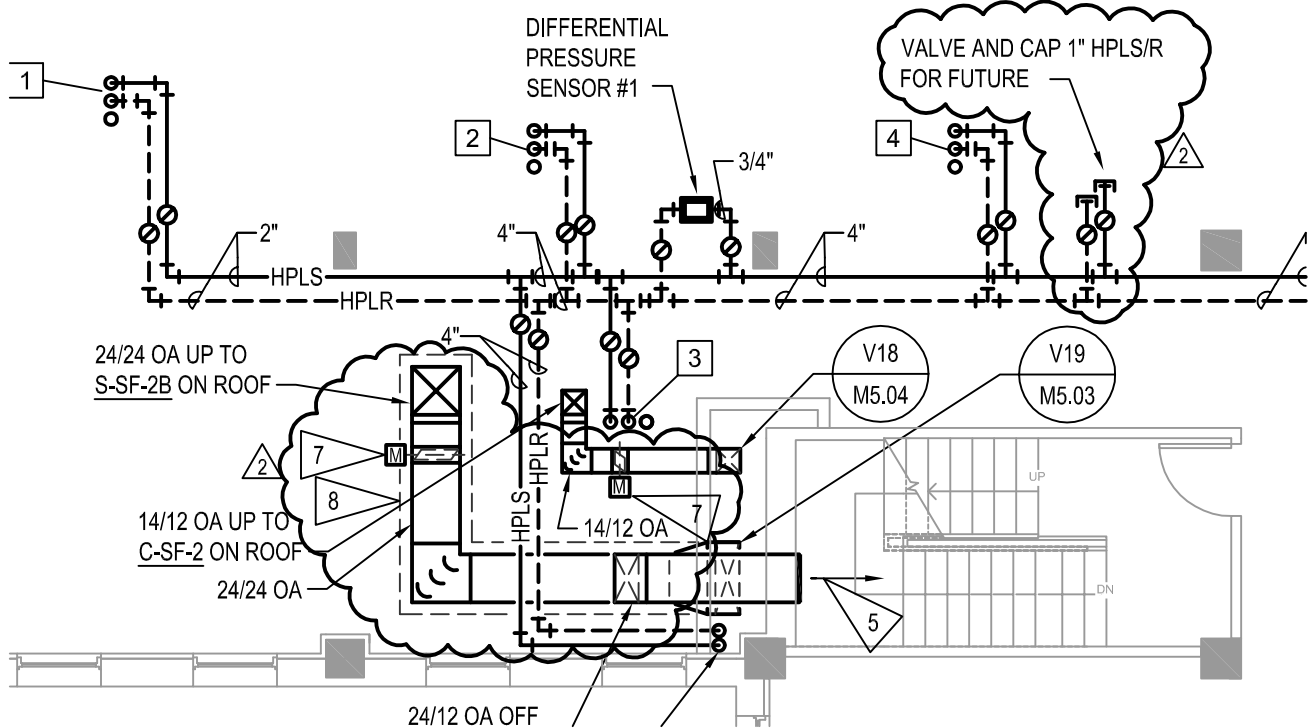
**Q18 SECTION "A"**  
 M1.01 SCALE: 1/4" = 1'-0"

**morrissey engineering inc**  
 mechanical | electrical | technology | commissioning  
 4940 North 118th Street  
 Omaha, NE 68164  
 P: 402.491.4144  
 www.morrisseyengineering.com

**Downtown Omaha Residence Inn  
 by Marriott**

project no.: 11290	drawing referenced: M1.01
date: 06-27-2012	addendum no.: 2

sketch **M1.01a**



- 7 LOW LEAKAGE OPPOSED BLADE DAMPER, SAME SIZE AS DUCTWORK. INTERLOCK DAMPER WITH FAN OPERATION. PROVIDE 12x12 ACCESS DOOR DOWNSTREAM FOR DAMPER POSITION INSPECTION.
- 8 WRAP STAIR PRESSURIZATION DUCTWORK WITH THE FOLLOWING FIRE BARRIER DUCT WRAP
  - MANUFACTURER: 3M FIRE BARRIER DUCT WRAP 615 & ACCESSORIES
  - FIRE WRAP MUST BE RATED FOR LIFE SAFETY STAIR PRESSURIZATION DUCTS



**morrissey**  
engineering inc

mechanical | electrical | technology | commissioning

4940 North 118th Street  
Omaha, NE 68164

P: 402.491.4144

www.morrisseyengineering.com

## Downtown Omaha Residence Inn by Marriott

project no.: 11290

drawing referenced:

M1.04

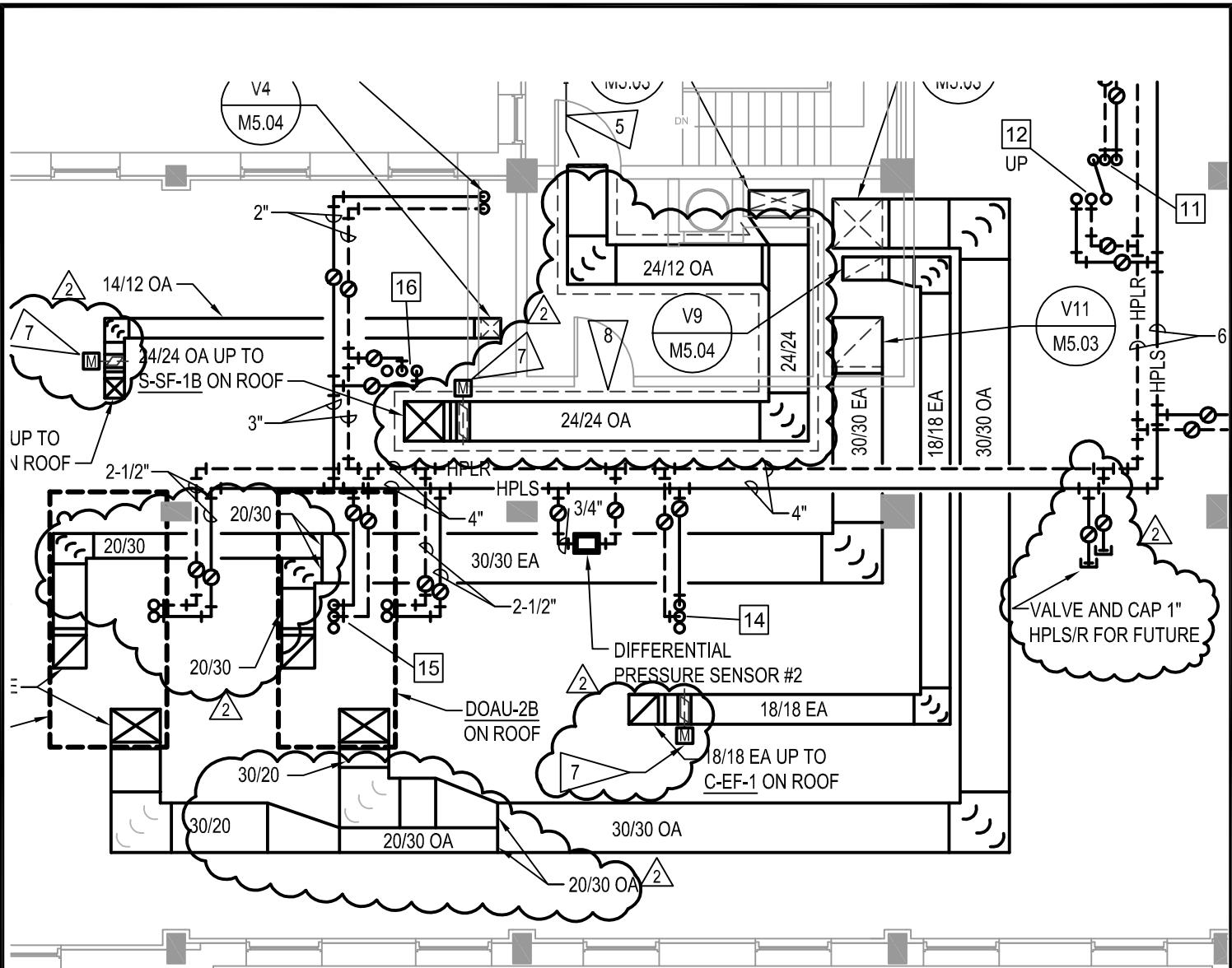
date: 06-27-2012

addendum no.:

2

sketch

**M1.04b**



**morrissey**  
engineering inc

mechanical | electrical | technology | commissioning

4940 North 118th Street  
Omaha, NE 68164

P: 402.491.4144

www.morrisseyengineering.com

## Downtown Omaha Residence Inn by Marriott

project no.: 11290

drawing referenced:

M1.04

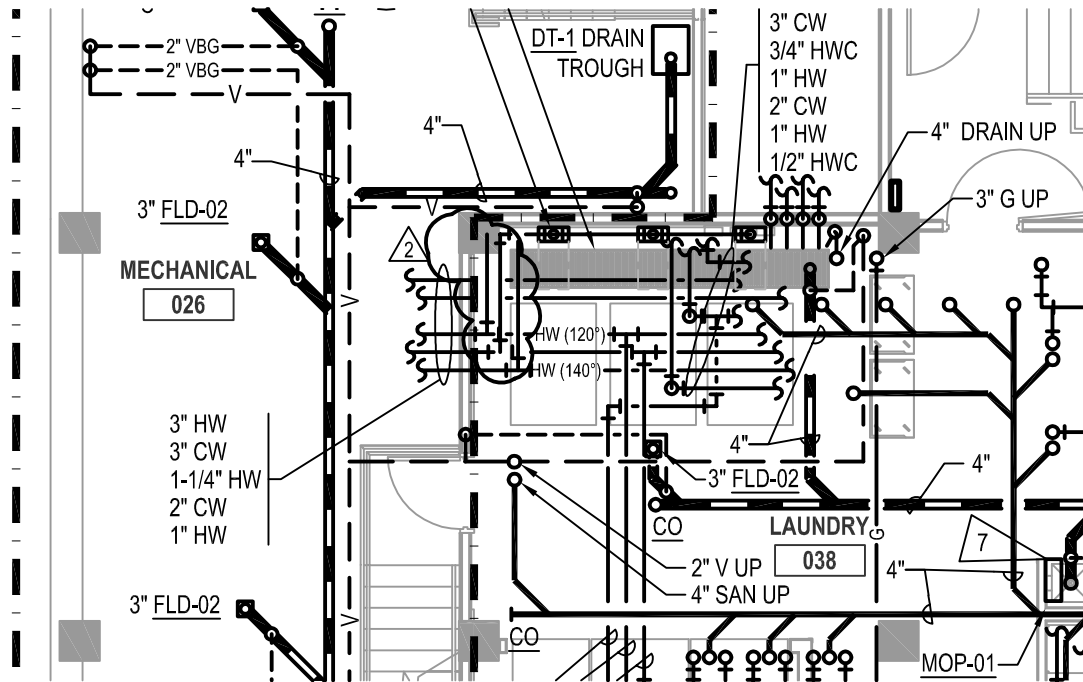
date: 06-27-2012

addendum no.:

2

sketch

**M1.04c**



mechanical | electrical | technology | commissioning

4940 North 118th Street  
Omaha, NE 68164

P: 402.491.4144

www.morrisseyengineering.com

## Downtown Omaha Residence Inn by Marriott

project no.: 11290

drawing referenced:

M2.00

date: 06-27-2012

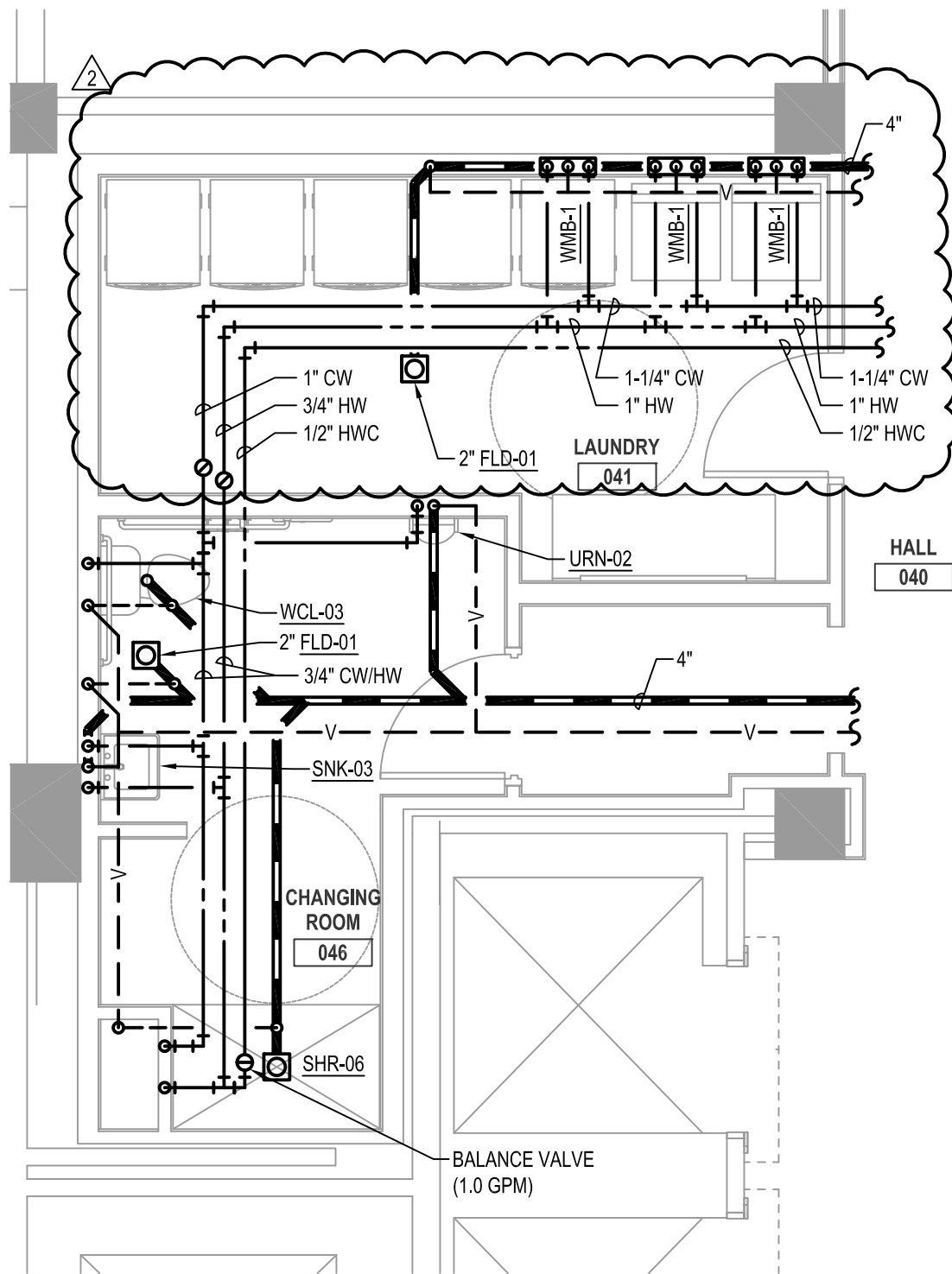
addendum no.:

2

sketch

M2.00b





**V1 ENLARGED PLAN - PLUMBING**

M4.01 SCALE: 1/4" = 1'-0"

N



mechanical | electrical | technology | commissioning

4940 North 118th Street  
Omaha, NE 68164

P: 402.491.4144

www.morrisseyengineering.com

## Downtown Omaha Residence Inn by Marriott

project no.: 11290	drawing referenced: M4.01
date: 06-27-2012	addendum no.: 2

sketch **M4.01a**

# KITCHEN EQUIPMENT CONNECTION SCHEDULE (1) (2) (3)

MARK	ITEM	CW	HW	140°F HW	WASTE	VENT	GAS	NATURAL GAS LOAD (CFH)	REMARKS
KE1	ICE WATER FILTER	1/2"	-	-	-	- <sup>2</sup>	-	-	-
KE2	ICE MACHINE	1/2"	-	-	1"	-	-	-	(5)
KE3	COFFEE BREWER	1/2"	-	-	-	-	-	- <sup>2</sup>	(9)
KE4	SINK, ONE COMPARTMENT	-	-	-	2"	-	-	-	(5)
KE4-A	FAUCET	1/2"	-	1/2"	-	-	-	-	-
KE11	SINK, HAND	1/2"	1/2"	-	2"	-	-	-	(6) (7)
KE13	DISHWASHER	-	-	3/4"	2"	-	-	- <sup>2</sup>	(5) (8)
KE15	SINK, FOUR COMPARTMENT	-	-	-	2"	-	-	-	(5)
KE15-A	PRE-RINSE UNIT	1/2"	-	1/2"	-	-	-	-	(6)
KE15-B	FAUCET	3/4"	-	3/4"	-	- <sup>2</sup>	-	-	(6)
KE16	COLD FOOD PAN, DROP-IN	-	-	-	1"	-	-	-	(5)
KE25	JUICE CHILLER	1/2"	-	-	1"	- <sup>2</sup>	-	-	(5)
KE27	WALK-IN FREEZER/COOLER COMBO	-	-	-	1"	-	-	-	(4)

- REMARKS
1. VERIFY ALL EQUIPMENT CONNECTION SIZES AND LOCATIONS WITH KITCHEN EQUIPMENT SUPPLIER AND OWNER. FIELD VERIFY CONNECTION SIZES AND MODIFY SIZE AND LOCATION OF UTILITIES AS REQUIRED.
  2. VERIFY ALL BACKFLOW PREVENTION REQUIREMENTS WITH AUTHORITY HAVING JURISDICTION. PROVIDE BACKFLOW PREVENTION DEVICES AS REQUIRED BY PLUMBING CODE.
  3. PLUMBING CONTRACTOR TO MAKE ALL FINAL CONNECTIONS TO COMPLETE.
  4. PROVIDE 3/4" INDIRECT WASTE TO FLOOR SINK. ROUTE PIPING INSIDE WALL.
  5. PROVIDE INDIRECT WASTE TO FLOOR SINK. FIELD VERIFY CONNECTION SIZE.
  6. INSTALL FAUCETS PER MANUFACTURER'S RECOMMENDATIONS. PROVIDE ISOLATION VALVES AND OTHER RECOMMENDED ACCESSORIES.
  7. PROVIDE MIXING VALVE TO PROVIDE 110°F HOT WATER.
  8. PROVIDE WITH SHUT OFF VALVE, LINE STRAINER, AND BRAIDED HOSE. COORDINATE WITH EQUIPMENT PROVIDED.<sup>2</sup>
  9. PROVIDE WITH ATMOSPHERIC VACUUM BREAKER.



mechanical | electrical | technology | commissioning

4940 North 118th Street  
Omaha, NE 68164

P: 402.491.4144

www.morrisseyengineering.com

## Downtown Omaha Residence Inn by Marriott

project no.: 11290

drawing referenced:

M4.05

date: 06-27-2012

addendum no.:







2

sketch

# M4.05a



# PLUMBING FIXTURE SCHEDULE (1) (3)

TAG	FIXTURE (2)	FAUCET/ FLUSHVALVE/ ACCESSORY (2)	DESCRIPTION	CONNECTIONS								
TUB-01			<p>MODEL: AMERICAN STANDARD 2391, 202, 020 (R) OR 2390, 202, 020 (L)</p> <p>MODEL: KOHLER K-P-15601-X4N-CP &amp; K-P304-KS-NA</p> <p>DESCRIPTION: "PRINCETON RECESS BATH" TUB WITH "CORALIAS" BATH / SHOWER TRIM WITH RED / BLUE INDEX / WITH ARM, FLANGE, AND DIVERTER SPOUT / WITH "RIGHT TEMP" VALVE / LESS SHOWER HEAD.</p> <p>ADA COMPLIANT: NO</p> <p>COLOR: WHITE</p> <p>FIXTURE ENCLOSURE: 60" X 30" X 14"</p> <p>FIXTURE ENCLOSURE INSTALLATION: FLUSH MOUNTED TO THE FLOOR.</p> <p>FIXTURE ENCLOSURE DRAIN: MCGUIRE MFG. CO., INC. BATHUB DRAIN 1221/LAT.</p> <p>SHOWER CURTAIN / DOOR AND ACCESSORIES: REFER TO ARCHITECTURAL DRAWINGS AND SPECIFICATIONS.</p> <p>FAUCET CONSTRUCTION: PRESSURE BALANCED VALVE WITH SCREWDRIVER STOPS.</p> <p>FAUCET COMPONENTS: SINGLE LEVER CHROME PLATED HANDLE, TUB FILLER SPOUT, SHOWER DIVERTER VALVE.</p> <p>SHOWER HEAD: KOHLER "FORTE" SINGLE-FUNCTION 2 GPM, K-10327-CP.</p>	<table border="1" style="width: 100%; border-collapse: collapse;"> <tr> <td style="width: 25%;">CW</td> <td style="width: 25%;">HW</td> <td style="width: 25%;">WASTE</td> <td style="width: 25%;">VENT</td> </tr> <tr> <td style="text-align: center;">1/2"</td> <td style="text-align: center;">1/2"</td> <td style="text-align: center;">1-1/2"</td> <td style="text-align: center;">1-1/2"</td> </tr> </table> <p>REMARKS:</p>	CW	HW	WASTE	VENT	1/2"	1/2"	1-1/2"	1-1/2"
CW	HW	WASTE	VENT									
1/2"	1/2"	1-1/2"	1-1/2"									
TUB-02			<p>GEN. 7.5/8</p> <p>MODEL: KOHLER K-715-0 (L) OR K-716-0 (R)</p> <p>MODEL: KOHLER K-T15621-X4-CP &amp; K-15135-CP &amp; K-304-KS-NA &amp; K-7397-CP</p> <p>DESCRIPTION: "VILLAGER BATH" WITH "CORALIAS" SHOWER VALVE TRIM ONLY WITH RED/BLUE INDEX / SPOUT "CORALIAS" WITH NON-DIVERTER / RIGHT-TEMP VALVE AND SUPPLY ELBOW / LESS SHOWER HEAD.</p> <p>ADA COMPLIANT: YES</p> <p>COLOR: WHITE</p> <p>FIXTURE ENCLOSURE: 60" X 30" X 14"</p> <p>FIXTURE ENCLOSURE INSTALLATION: FLUSH MOUNTED TO THE FLOOR.</p> <p>ARAB-BARS AND SEAT: FACTORY INSTALLED.</p> <p>FIXTURE ENCLOSURE DRAIN: MCGUIRE MFG. CO., INC. BATHUB DRAIN 1221/PJ.</p> <p>SHOWER CURTAIN / DOOR AND ACCESSORIES: REFER TO ARCHITECTURAL DRAWINGS AND SPECIFICATIONS.</p> <p>SHOWER DIVERTER: KOHLER "MASTERSHOWER" K-7264-NA &amp; K-110290-CP</p> <p>SHOWER HEAD: KOHLER WALL MOUNT, K-10327-CP, KOHLER HAND HELD K-10286-CP, K-9514-CP, K-355-CP, K-9660-CP</p>	<table border="1" style="width: 100%; border-collapse: collapse;"> <tr> <td style="width: 25%;">CW</td> <td style="width: 25%;">HW</td> <td style="width: 25%;">WASTE</td> <td style="width: 25%;">VENT</td> </tr> <tr> <td style="text-align: center;">1/2"</td> <td style="text-align: center;">1/2"</td> <td style="text-align: center;">1-1/2"</td> <td style="text-align: center;">1-1/2"</td> </tr> </table> <p>REMARKS:</p>	CW	HW	WASTE	VENT	1/2"	1/2"	1-1/2"	1-1/2"
CW	HW	WASTE	VENT									
1/2"	1/2"	1-1/2"	1-1/2"									
TUB-03			<p>MODEL: SEE DESCRIPTION</p> <p>MODEL: KOHLER K-P-15601-X4N-CP &amp; K-P304-KS-NA</p> <p>DESCRIPTION: AQUARIUS A-7236 TS TUB-SHOWER WITH "CORALIAS" BATH / SHOWER TRIM WITH RED / BLUE INDEX / WITH ARM, FLANGE, AND DIVERTER SPOUT / WITH "RIGHT TEMP" VALVE / LESS SHOWER HEAD.</p> <p>ADA COMPLIANT: NOT REQUIRED.</p> <p>COLOR: WHITE</p> <p>FIXTURE ENCLOSURE: 72" X 36" X 84"</p> <p>FIXTURE ENCLOSURE INSTALLATION: FLUSH MOUNTED TO THE FLOOR.</p> <p>FIXTURE ENCLOSURE DRAIN: INTEGRAL CORROSION-RESISTANT METAL WITH REMOVABLE STRAINER.</p> <p>SHOWER CURTAIN / DOOR AND ACCESSORIES: REFER TO ARCHITECTURAL DRAWINGS AND SPECIFICATIONS.</p> <p>FAUCET CONSTRUCTION: PRESSURE BALANCED VALVE WITH SCREWDRIVER STOPS.</p> <p>FAUCET COMPONENTS: SINGLE LEVER CHROME PLATED HANDLE, TUB FILLER SPOUT, SHOWER DIVERTER VALVE.</p> <p>SHOWER HEAD: KOHLER "FORTE" SINGLE-FUNCTION 2 GPM, K-10327-CP.</p>	<table border="1" style="width: 100%; border-collapse: collapse;"> <tr> <td style="width: 25%;">CW</td> <td style="width: 25%;">HW</td> <td style="width: 25%;">WASTE</td> <td style="width: 25%;">VENT</td> </tr> <tr> <td style="text-align: center;">1/2"</td> <td style="text-align: center;">1/2"</td> <td style="text-align: center;">1-1/2"</td> <td style="text-align: center;">1-1/2"</td> </tr> </table> <p>REMARKS:</p>	CW	HW	WASTE	VENT	1/2"	1/2"	1-1/2"	1-1/2"
CW	HW	WASTE	VENT									
1/2"	1/2"	1-1/2"	1-1/2"									

- REMARKS:
- (1) SEE SPECIFICATIONS FOR ADDITIONAL REQUIREMENTS INCLUDING STOPS, FITTINGS AND ALL OTHER SPECIALTIES.
  - (2) PICTURES OF FIXTURES DO NOT INDICATE ACTUAL FIXTURE SPECIFIED. PICTURES ARE GRAPHICAL IN NATURE. SEE DESCRIPTION FOR ACTUAL FIXTURE AND MODEL.
  - (3) ALL PLUMBING FIXTURES ON THIS SHEET SHALL MEET THE "LVP" (LOW FLOW) REQUIREMENT AS DESIGNATED IN THE GEN 7.5 / 8 RESIDENCE INN PLUMBING FIXTURE MATRIX.



mechanical | electrical | technology | commissioning

4940 North 118th Street  
Omaha, NE 68164  
P: 402.691.4144





www.morrisseyengineering.com

## Downtown Omaha Residence Inn by Marriott

project no.:	drawing referenced:	M4.11
date:	addendum no.:	2
06-27-2012		Sketch

# M4.11a

## PLUMBING FIXTURE SCHEDULE (1) (3)

TAG	FIXTURE (2)	FAUCET/ FLUSHVALVE/ ACCESSORY (2)	DESCRIPTION	CONNECTIONS								
SHR-01 GEN. 7.5/8	<p>MODEL: MINCEY MARBLE MANUFACTURING, INC. 61"x31" CUSTOM RIS PAN</p> 	<p>MODEL: KOHLER K-T15624-X4-CP &amp; K-304-KS-NA &amp; K-7397-CP</p> 	<p>DESCRIPTION: ADA ROLL-IN SHOWER IS PROVIDED WITH HANDHELD SHOWER HEAD MTD ON BACK WALL (LONG WALL) AND FIXED SHOWER HEAD MTD ON END WALL (SIDE WALL) WITH WALL MTD DIVERTER TO CONTROL FLOW TO EACH CONTROL &amp; DIVERTER LOCATED AT HAND-HELD.</p> <p>ADA COMPLIANT: YES</p> <p>FIXTURE ENCLOSURE: 61"x31" CUSTOM ROLL-IN SHOWER PAN</p> <p>SHOWER DIVERTER: KOHLER "MASTERSHOWER" K-728-K-NA &amp; K-T10290-4-CP</p> <p>FIXTURE ENCLOSURE DRAIN: INTEGRAL CORROSION-RESISTANT METAL WITH REMOVABLE STRAINER.</p> <p>SHOWER CURTAIN / DOOR AND ACCESSORIES: REFER TO ARCHITECTURAL DRAWINGS AND SPECIFICATIONS.</p> <p>SHOWER HEAD: KOHLER "FORTE KATALYST" WALL MOUNT, K-10327-CP. KOHLER "FORTE" HAND HELD, K-10286-CP. K-9514-CP. K-355-CP. K-9660-CP.</p>	<table border="1" style="width: 100%; border-collapse: collapse;"> <thead> <tr> <th>CW</th> <th>HW</th> <th>WASTE</th> <th>VENT</th> </tr> </thead> <tbody> <tr> <td>1/2"</td> <td>1/2"</td> <td>1-1/2"</td> <td>1-1/2"</td> </tr> </tbody> </table> <p>REMARKS: FIELD COORDINATE DRAIN LOCATION TO AVOID STRUCTURE.</p>	CW	HW	WASTE	VENT	1/2"	1/2"	1-1/2"	1-1/2"
CW	HW	WASTE	VENT									
1/2"	1/2"	1-1/2"	1-1/2"									
SHR-02	<p>MODEL: MINCEY MARBLE MANUFACTURING, INC. 34"x60" SHOWER PAN</p> 	<p>MODEL: KOHLER K-P15601-X4N-CP &amp; K-P304-KS-NA</p> 	<p>DESCRIPTION: 34"x60" SHOWER PAN WITH "RELANT 3" WITH SHOWER ARM AND FLANGE FOR FIXED SHOWER HEAD W/ RED/BLEU INDEX / WITH SHOWER SPOUT AND "RELANT" VALVE / LESS SHOWERHEAD.</p> <p>ADA COMPLIANT: NO</p> <p>COLOR: WHITE</p> <p>FIXTURE ENCLOSURE: 34"x60" SHOWER PAN WITH INTEGRAL 4" CURB.</p> <p>FIXTURE ENCLOSURE DRAIN: INTEGRAL CORROSION-RESISTANT METAL WITH REMOVABLE STRAINER.</p> <p>SHOWER VALVE: PRESSURE BALANCED VALVE WITH SCREWDIVER STOPS.</p> <p>SHOWER HANDLE: SINGLE-LEVER.</p> <p>SHOWER CURTAIN / DOOR AND ACCESSORIES: REFER TO ARCHITECTURAL DRAWINGS AND SPECIFICATIONS.</p> <p>SHOWER HEAD: KOHLER "FORTE" SINGLE-FUNCTION 2 GPM, K-10327-CP.</p>	<table border="1" style="width: 100%; border-collapse: collapse;"> <thead> <tr> <th>CW</th> <th>HW</th> <th>WASTE</th> <th>VENT</th> </tr> </thead> <tbody> <tr> <td>1/2"</td> <td>1/2"</td> <td>1-1/2"</td> <td>1-1/2"</td> </tr> </tbody> </table> <p>REMARKS: FIELD COORDINATE DRAIN LOCATION TO AVOID STRUCTURE.</p>	CW	HW	WASTE	VENT	1/2"	1/2"	1-1/2"	1-1/2"
CW	HW	WASTE	VENT									
1/2"	1/2"	1-1/2"	1-1/2"									

**REMARKS:**

- (1) SEE SPECIFICATIONS FOR ADDITIONAL REQUIREMENTS INCLUDING STOPS, FITTINGS AND ALL OTHER SPECIALTIES.
- (2) PICTURES OF FIXTURES DO NOT INDICATE ACTUAL FIXTURE SPECIFIED. PICTURES ARE GRAPHICAL IN NATURE. SEE DESCRIPTION FOR ACTUAL FIXTURE AND MODEL.
- (3) ALL PLUMBING FIXTURES ON THIS SHEET SHALL MEET THE "LVP" (LOW FLOW) REQUIREMENT AS DESIGNATED IN THE GEN 7.5 / 8 RESIDENCE INN PLUMBING FIXTURE MATRIX.



mechanical | electrical | technology | commissioning



4940 North 118th Street  
Omaha, NE 68164  
P: 402.691.4144

www.morrisseyengineering.com

## Downtown Omaha Residence Inn by Marriott

project no.:	11290	drawing referenced:	M4.11
date:	06-27-2012	addendum no.:	2
			M4.11b
		Sketch	

## PLUMBING FIXTURE SCHEDULE (1) (3)

TAG	FIXTURE (2)	FAUCET/ FLUSHVALVE/ ACCESSORY (2)	DESCRIPTION	CONNECTIONS								
SHR-03	<p style="border: 1px solid black; border-radius: 50%; padding: 5px; display: inline-block;">MODEL: MINCEY MARBLE MANUFACTURING, INC. 37"x37" SHOWER PAN</p>	 <p>MODEL: KOHLER K-P15601-X4N-CP &amp; K-P304-KS-NA</p>	<p>DESCRIPTION: 37"x37" SHOWER PAN WITH "RELANT" 3" WITH SHOWER ARM AND FLANGE FOR FIXED SHOWER HEAD W/ RED/BLE INDEX / WITH SHOWER SPOUT AND "RELANT" VALVE / LESS SHOWERHEAD.</p> <p>ADA COMPLIANT: NO</p> <p>COLOR: WHITE</p> <p>FIXTURE ENCLOSURE: 37"x37" SHOWER PAN.</p> <p>FIXTURE ENCLOSURE DRAIN: INTEGRAL CORROSION-RESISTANT METAL WITH REMOVABLE STRAINER.</p> <p>SHOWER VALVE: PRESSURE BALANCED VALVE WITH SCREWDRIVER STOPS.</p> <p>SHOWER HANDLE: SINGLE-LEVER.</p> <p>SHOWER CURTAIN / DOOR AND ACCESSORIES: REFER TO ARCHITECTURAL DRAWINGS AND SPECIFICATIONS.</p> <p>SHOWER HEAD: KOHLER "FORTE" SINGLE-FUNCTION 2 GPM, K-10327-CP.</p> <p style="border: 1px solid black; border-radius: 50%; padding: 5px; display: inline-block;">2</p>	<table border="1" style="width: 100%; border-collapse: collapse; text-align: center;"> <tr> <td>CW</td> <td>HW</td> <td>WASTE</td> <td>VENT</td> </tr> <tr> <td>1/2"</td> <td>1/2"</td> <td>1-1/2"</td> <td>1-1/2"</td> </tr> </table> <p>REMARKS: FIELD COORDINATE DRAIN LOCATION TO AVOID STRUCTURE.</p> <p style="border: 1px solid black; border-radius: 50%; padding: 5px; display: inline-block;">2</p>	CW	HW	WASTE	VENT	1/2"	1/2"	1-1/2"	1-1/2"
CW	HW	WASTE	VENT									
1/2"	1/2"	1-1/2"	1-1/2"									
SHR-06 GEN. 7.5/8	ENCLOSURE BY ARCHITECT	 <p>MODEL: KOHLER K-T15621-X4-CP &amp; K-304-KS-NA &amp; K-7397-CP</p>	<p>DESCRIPTION: ENCLOSURE BY ARCHITECT WITH "CORALAIS" SHOWER VALVE TRIM ONLY WITH RED/BLE INDEX / SPOUT "CORALAIS" WITH NON-DIVERTER / RIGHT-TEMP VALVE AND SUPPLY ELBOW / LESS SHOWER HEAD.</p> <p>ADA COMPLIANT: YES</p> <p>FIXTURE ENCLOSURE: REFER TO ARCHITECTURAL DRAWINGS.</p> <p>SHOWER DIVERTER: KOHLER "MASTERSHOWER", K-728-K-NA &amp; K-T10290-4-CP</p> <p>FIXTURE ENCLOSURE DRAIN: 1/4" R. SMITH 2095L Y402 895CP</p> <p>SHOWER CURTAIN / DOOR AND ACCESSORIES: REFER TO ARCHITECTURAL DRAWINGS AND SPECIFICATIONS.</p> <p>SHOWER HEAD: KOHLER "FORTE" SINGLE-FUNCTION 2 GPM, K-10327-CP.</p> <p>SHOWER HEAD: KOHLER "FORTE" SINGLE-FUNCTION 2 GPM, K-10327-CP.</p> <p>SHOWER HEAD: KOHLER "FORTE" SINGLE-FUNCTION 2 GPM, K-10327-CP.</p> <p style="border: 1px solid black; border-radius: 50%; padding: 5px; display: inline-block;">2</p>	<table border="1" style="width: 100%; border-collapse: collapse; text-align: center;"> <tr> <td>CW</td> <td>HW</td> <td>WASTE</td> <td>VENT</td> </tr> <tr> <td>1/2"</td> <td>1/2"</td> <td>1-1/2"</td> <td>1-1/2"</td> </tr> </table> <p>REMARKS:</p>	CW	HW	WASTE	VENT	1/2"	1/2"	1-1/2"	1-1/2"
CW	HW	WASTE	VENT									
1/2"	1/2"	1-1/2"	1-1/2"									

REMARKS:  
 (1) SEE SPECIFICATIONS FOR ADDITIONAL REQUIREMENTS INCLUDING STOPS, FITTINGS AND ALL OTHER SPECIALTIES.  
 (2) PICTURES OF FIXTURES DO NOT INDICATE ACTUAL FIXTURE SPECIFIED. PICTURES ARE GRAPHICAL IN NATURE. SEE DESCRIPTION FOR ACTUAL FIXTURE AND MODEL.  
 (3) ALL PLUMBING FIXTURES ON THIS SHEET SHALL MEET THE "LVP" (LOW FLOW) REQUIREMENT AS DESIGNATED IN THE GEN 7.5 / 8 RESIDENCE INN PLUMBING FIXTURE MATRIX.



mechanical | electrical | technology | commissioning

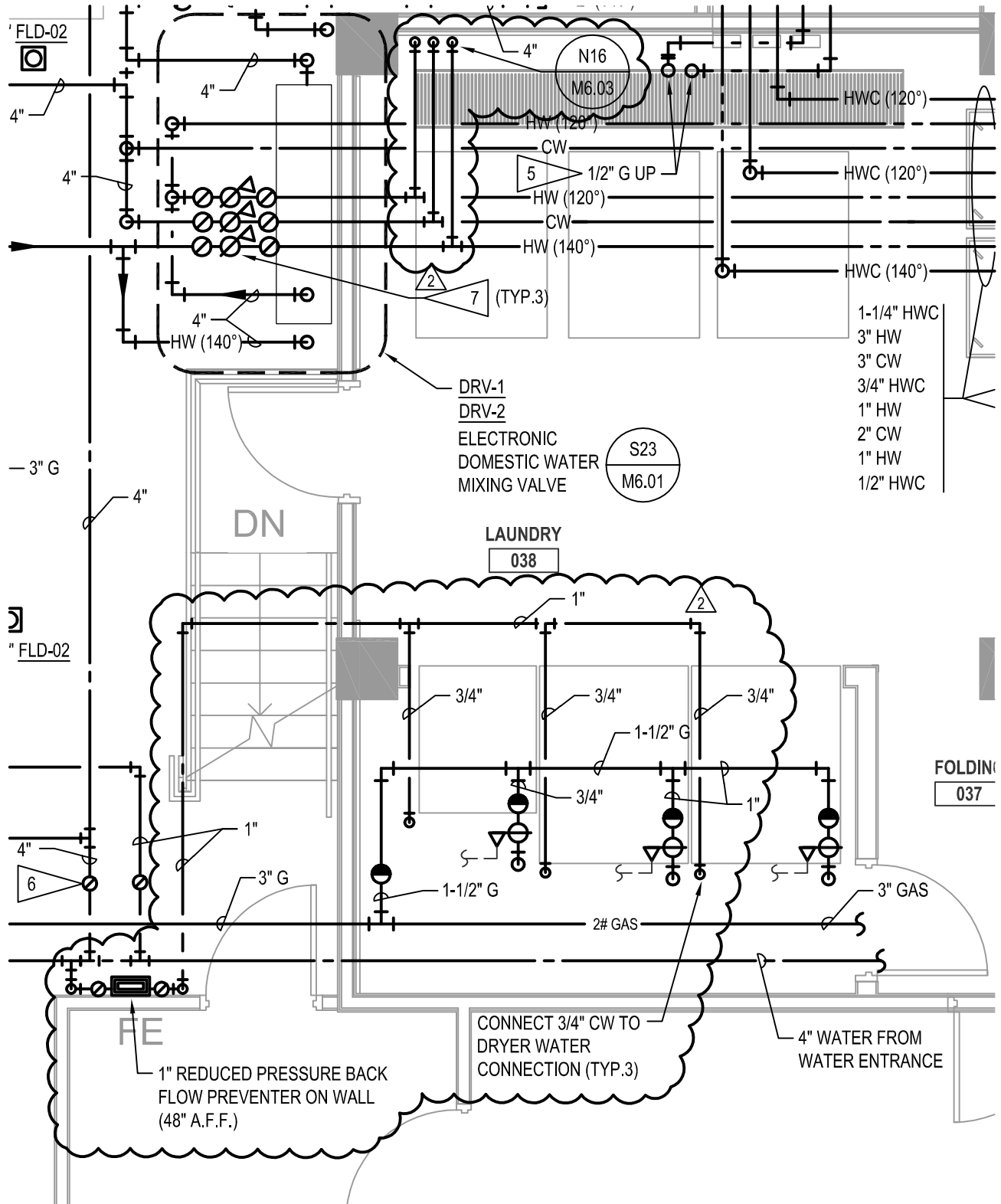
4940 North 118th Street  
 Omaha, NE 68164  
 P: 402.691.4144

www.morrisseyengineering.com

## Downtown Omaha Residence Inn by Marriott

project no.:	11290	drawing referenced:	M4.11
date:	06-27-2012	addendum no.:	2
			M4.11C

Sketch



mechanical | electrical | technology | commissioning

4940 North 118th Street  
Omaha, NE 68164

P: 402.491.4144

www.morrisseyengineering.com

## Downtown Omaha Residence Inn by Marriott

project no.: 11290 drawing referenced: M5.01

date: 06-27-2012 addendum no.: 2

sketch **M5.01a**

**FIRE ALARM CONTROL**

FIRE ALARM SYSTEM SHALL CONTROL AND THE FOLLOWING ITEMS.

- 1. **DETAIL V11 SMOKE CONTROL RISER DIAGRAM (OUTSIDE AIR)**
  - a. DOAU-2A and DOAU-2B
  - b. COMBINATION FIRE SMOKE DAMPERS (19)
  
- 2. **DETAIL V11 SMOKE CONTROL RISER DIAGRAM (EXHAUST AIR)**
  - a. COMBINATION FIRE SMOKE DAMPERS (11)

**DOAU-2A AND DOAU-2B SMOKE DAMPER OPERATION**

DETAIL V11 SMOKE CONTROL RISER DIAGRAM:

- 1. SIGNAL FROM THE FIRE ALARM PANEL SHALL CLOSE ASSOCIATED FLOOR COMBINATION FIRE SMOKE DAMPERS (SUPPLY AND EXHAUST) .
  
- 2. DOAU-2A AND DOAU-2B SHALL REMAIN OPERATIONAL AND COMBINATION FIRE SMOKE DAMPERS ON FLOORS WITHOUT A SIGNAL FROM THE FIRE ALARM PANEL SHALL REMAIN OPEN.

2



4940 North 118th Street  
Omaha, NE 68164

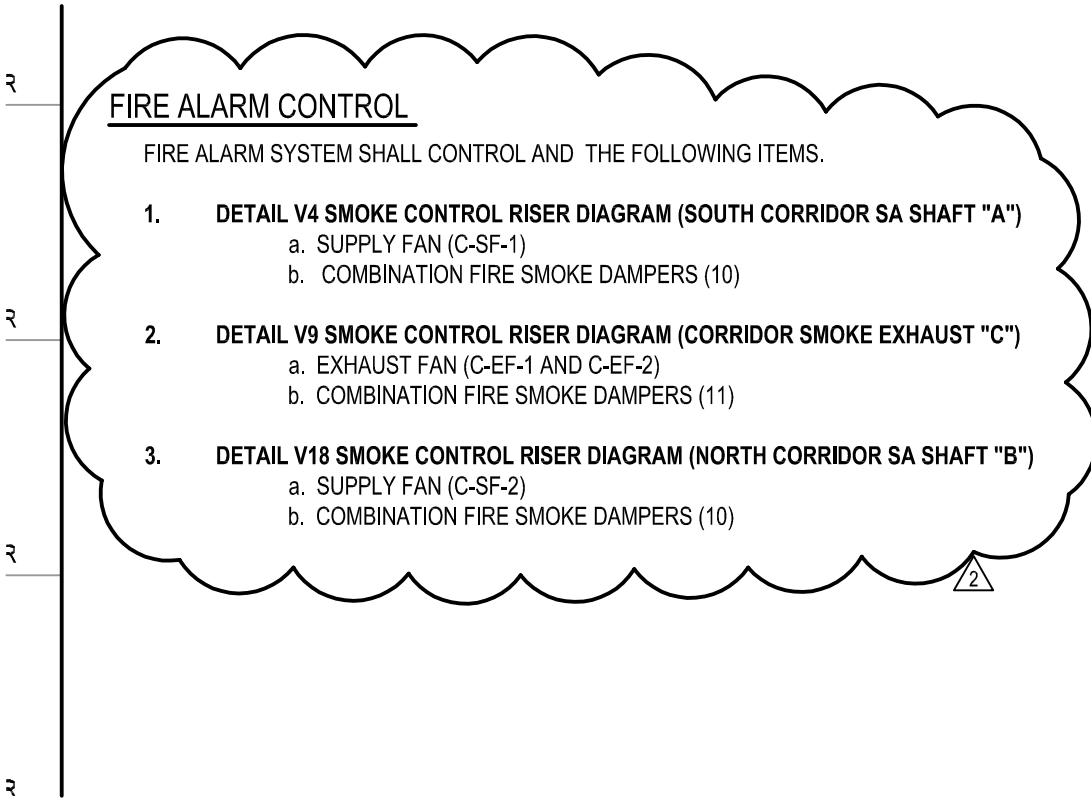
P: 402.491.4144

www.morrisseyengineering.com

**Downtown Omaha Residence Inn  
by Marriott**

project no.:	11290	drawing referenced:	M5.03
date:	06-27-2012	addendum no.:	2

sketch **M5.03a**



4940 North 118th Street  
Omaha, NE 68164

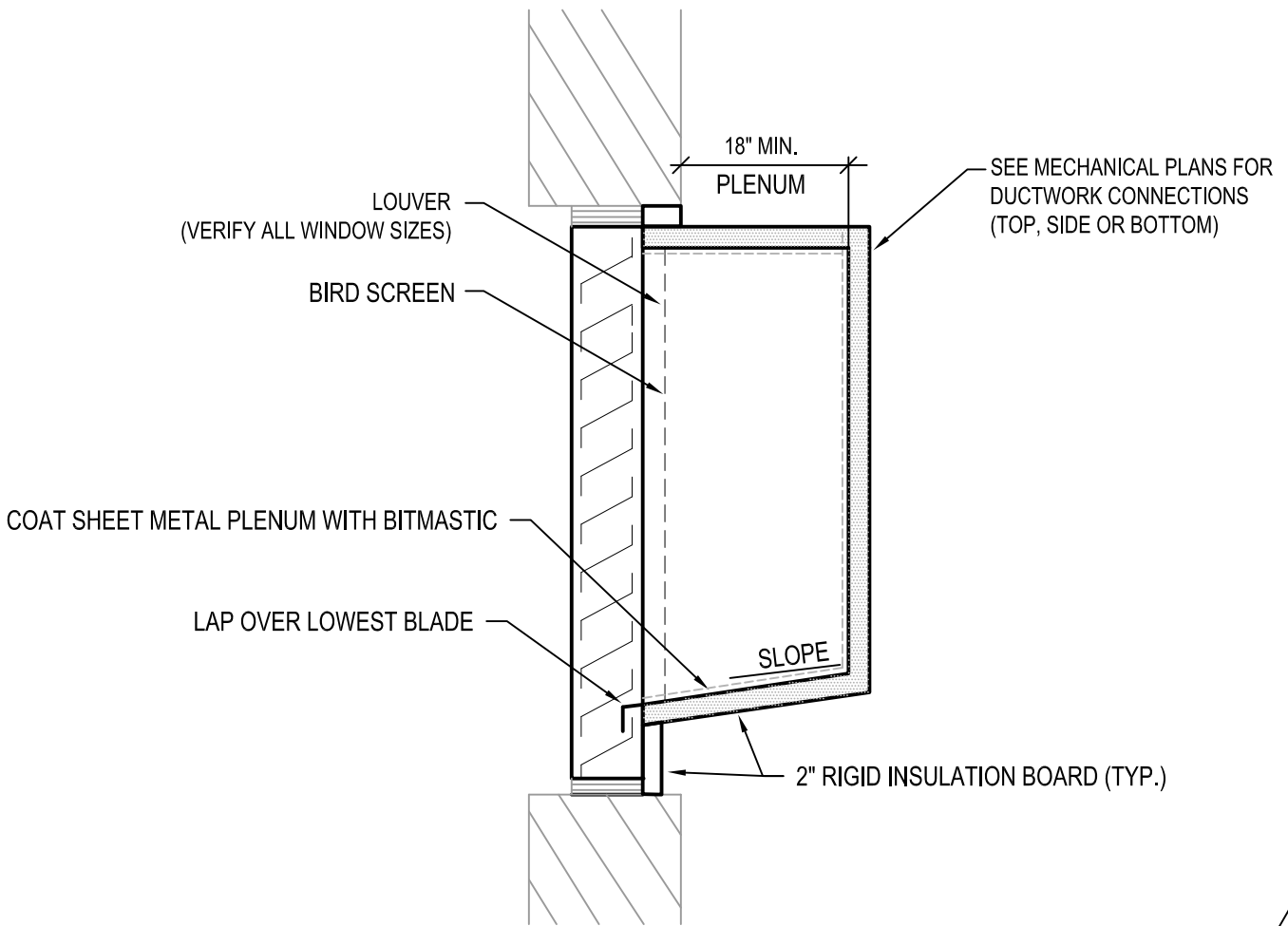
P: 402.491.4144

www.morrisseyengineering.com

## Downtown Omaha Residence Inn by Marriott

project no.:	11290	drawing referenced:	M5.04
date:	06-27-2012	addendum no.:	2

sketch **M5.04a**



**N1**

**TYPICAL WINDOW LOUVER DETAIL**

M6.01

SCALE: NO SCALE

2



mechanical | electrical | technology | commissioning

4940 North 118th Street  
Omaha, NE 68164

P: 402.491.4144

www.morrisseyengineering.com

**Downtown Omaha Residence Inn  
by Marriott**

project no.: 11290

drawing referenced:

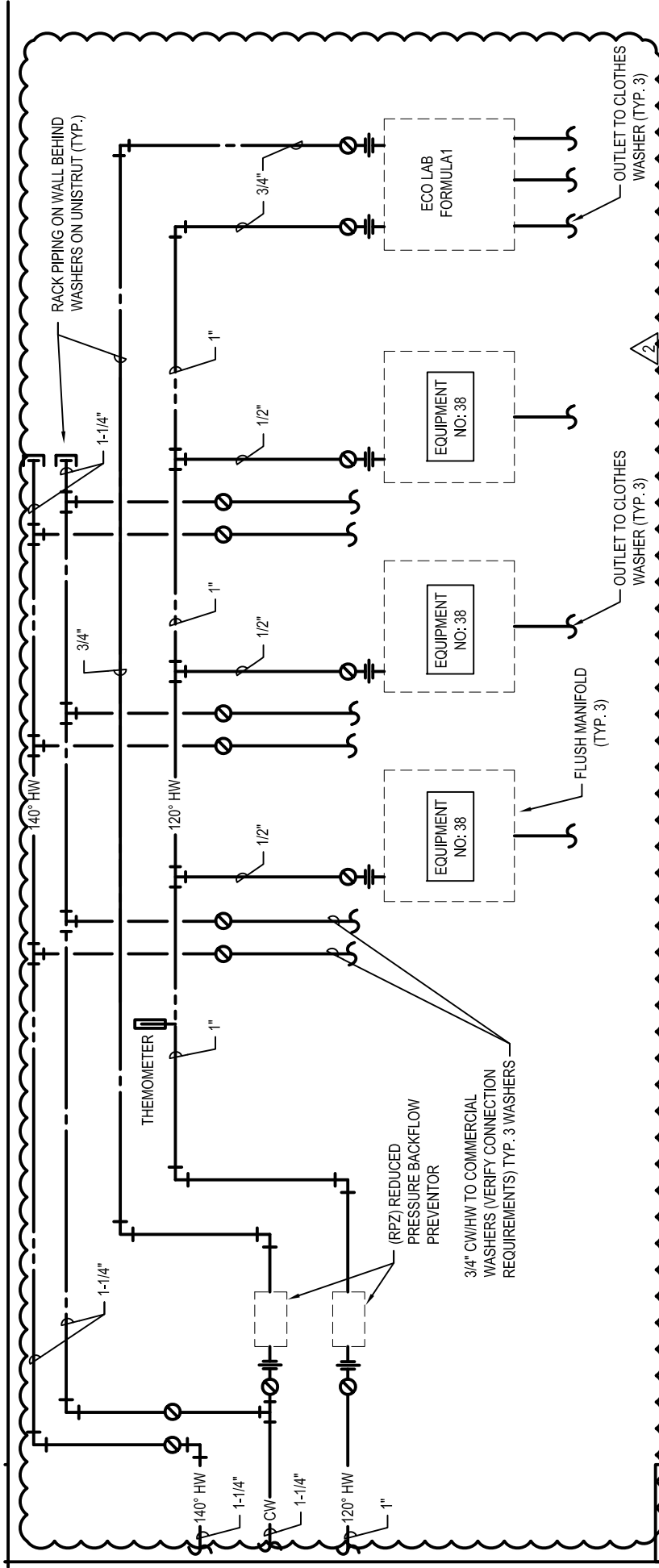
M6.01

date: 06-27-2012

addendum no.:

2

sketch **M6.01a**



**N16 CLOTHES WASHER FLUSH MANIFOLD DETAIL**

M6.03 SCALE: NO SCALE

**morrissey engineering inc**  
 mechanical | electrical | technology | commissioning  
 4940 North 118th Street  
 Omaha, NE 68164  
 P: 402.491.4144  
 www.morrisseyengineering.com

**Downtown Omaha Residence Inn  
 by Marriott**

project no.: 11290 drawing referenced: M6.03

date: 06-27-2012 addendum no.: 2

**M6.03a**  
 sketch

2

	DHWP-3	P-1	P-2	FP-1	JP-1	SEP-1	DWBP-1
SET	BELL & GOSSET	BELL & GOSSET	BELL & GOSSET	AURORA	AURORA	ZOLLER	GRUNDFOS
	PL-30	6x6x11 80-SC	6x6x11 80-SC	-	-	282	MPC-E 2CRE 20 - 2
C)	140°F (HWC)	COND WATER	COND WATER	FIRE PUMP	JOCKEY PUMP	SEE PLANS	DOMESTIC WATER
	INLINE	(5)	(5)	HORZ. SPLIT CASE	-	DUPLEX	(10)
	(6)	-	-	-	-	(9)	-
	1	700	700	750	25	34	115 EACH
	15	85	85	231	-	20	81
	24	96	96	-	-	30	-
	-	-	-	-	-	-	-
	-	76.0	76.0	-	-	-	-
	WATER	(7)	(7)	WATER	WATER	SEWAGE	WATER
	3/4	6	6	-	-	-	2"
	3/4	6	6	-	-	2	2"
	-	11	11	-	-	-	-
	2650	1750	1750	3,500	-	1,750	3,500
	1/12	25	25	75	3	1/2	5 HP EACH
	110	200	200	200	200	200	200
	1	3	3	3	3	1	3
	-	(8)	(8)	-	-	-	-
	-	VFD-P1	VFD-P2	FPC	JPC	(9)	(10)
	-	-	-	-	-	-	(10)

- 5. VERTICAL IN-LINE PUMP SPLIT COUPLED
- 6. ALL BRONZE FOR DOMESTIC WATER USE
- 7. 40% PROPYLENE GLYCOL
- 8. INVERTER DUTY MOTOR FOR VFD APPLICATION
- 9. SANITARY SEWERAGE PUMP  
SUBMERSIBLE QUICK-DISCONNECT RAIL SYSTEM  
ELECTRICAL ALTERNATOR (DUPLEX PUMP)  
HIGH WATER ALARM  
36" ROUND X 48" DEEP BASIN
- 10. DOMESTIC WATER BOOSTER PUMP ( VARIABLE SPEED PACKAGED PUMPING)  
- BOOSTERPAC-Q HYDRO MPC CONTROLLED BOOSTER SYSTEM  
- PUMPS (TWO) WITH INTEGRATED VARIABLE FREQUENCY DRIVE MOTORS  
- FACTORY PUMP SYSTEM CONTROLLER  
- VERTICAL, NON SELF PRIMING , MULTISTAGE, IN-LINE, CENTRIFUGAL PUMP  
- SINGLE POINT POWER CONNECTION WITH FACTORY DISCONNECT

2



mechanical | electrical | technology | commissioning

4940 North 118th Street  
Omaha, NE 68164

P: 402.491.4144

www.morrisseyengineering.com

## Downtown Omaha Residence Inn by Marriott

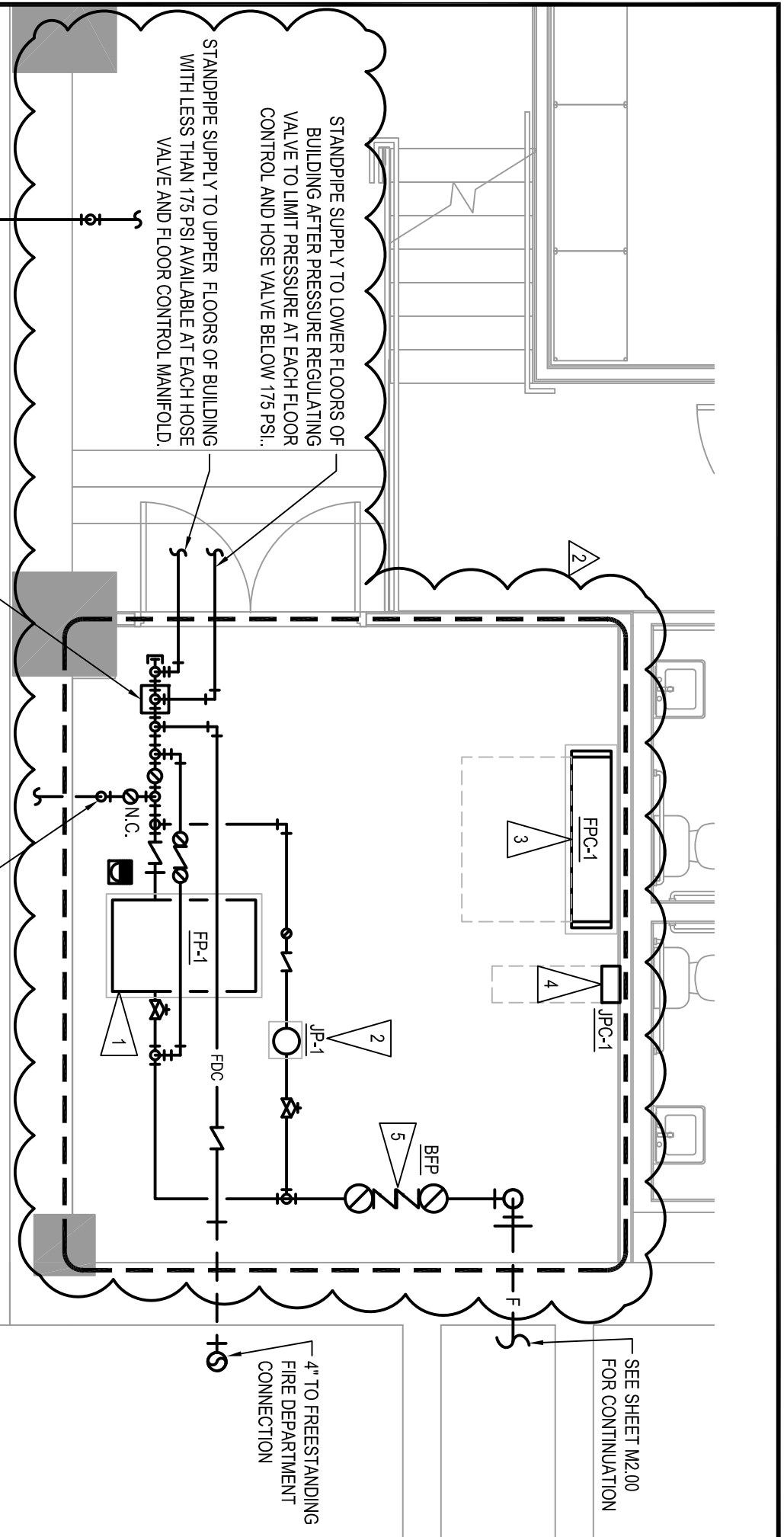
project no.: 11290

drawing referenced: M7.01

date: 06-27-2012

addendum no.: 2

sketch **M7.01a**



SEE SHEET M2.00 FOR CONTINUATION

4" TO FREESTANDING FIRE DEPARTMENT CONNECTION

STANDPIPE SUPPLY TO LOWER FLOORS OF BUILDING AFTER PRESSURE REGULATING VALVE TO LIMIT PRESSURE AT EACH FLOOR CONTROL AND HOSE VALVE BELOW 175 PSI.

STANDPIPE SUPPLY TO UPPER FLOORS OF BUILDING WITH LESS THAN 175 PSI AVAILABLE AT EACH HOSE VALVE AND FLOOR CONTROL MANIFOLD.

3" MAIN DRAIN PIPED WITH LOWPOINT TO BASEMENT FLOOR DRAIN AND TO DISCHARGE TO GRADE ABOVE AT FIRST FLOOR.

PRESSURE REGULATING VALVE TO SUPPLY STANDPIPE AND FIRE SPRINKLER SYSTEMS BELOW 175 PSI.

6" SPRINKLER PIPE UP TO FLUSH MOUNTED FIRE PUMP TEST CONNECTION IN ALLEY

# Downtown Omaha Residence Inn by Marriott

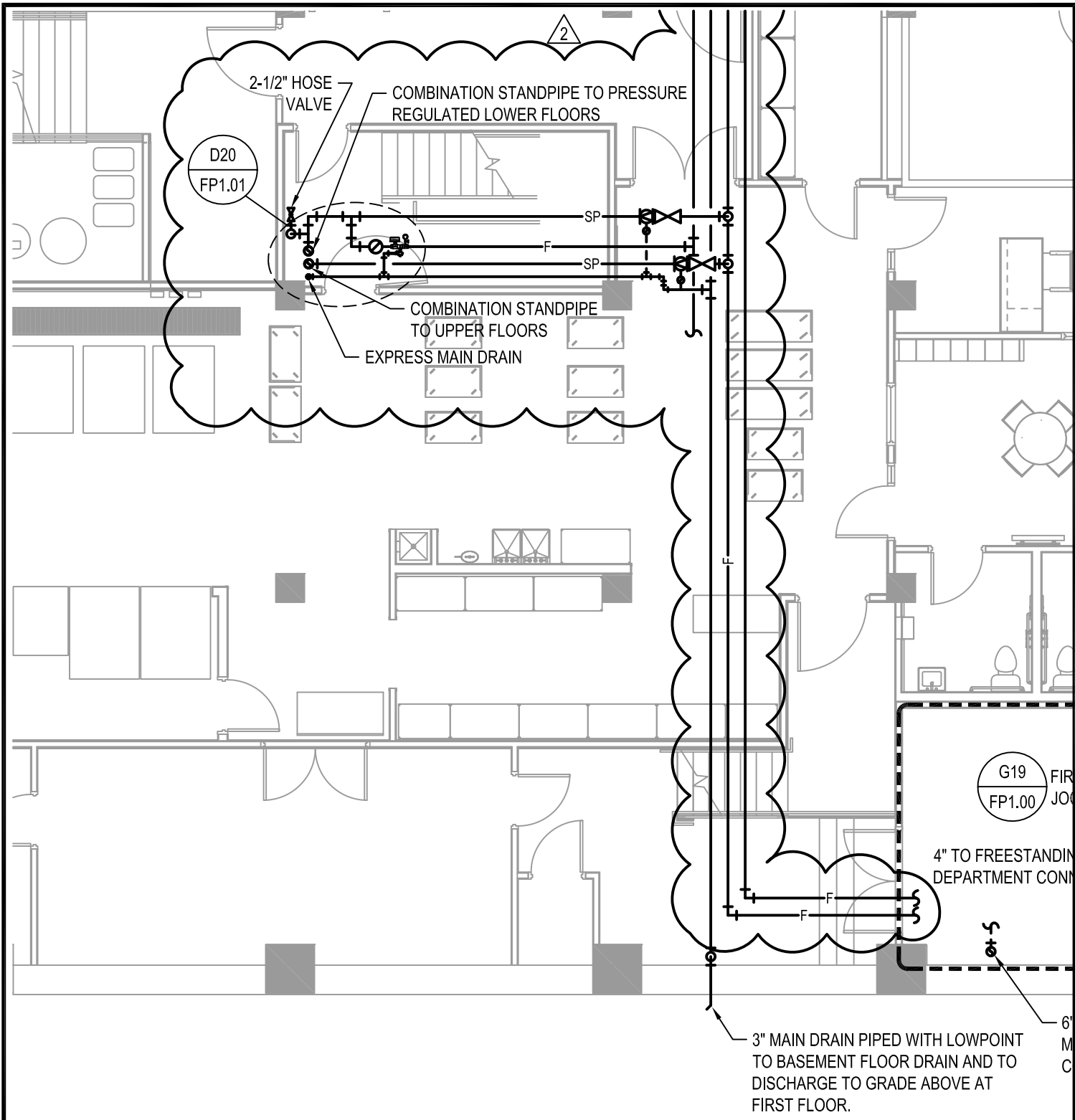


mechanical | electrical | technology | commissioning

4940 North 118th Street  
Omaha, NE 68164  
P: 402.491.4144

www.morrisseyengineering.com

project no.:	11290	drawing referenced:	FP1.00
date:	06-27-2012	addendum no.:	2
			Sketch
FP1.00a			

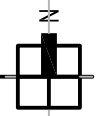


V1

BASEMENT FLOOR PLAN - FIRE PROTECTION

FP1.00

SCALE: 1/8" = 1'-0"



**morrissey**  
engineering inc

mechanical | electrical | technology | commissioning

4940 North 118th Street  
Omaha, NE 68164

P: 402.491.4144

www.morrisseyengineering.com

Downtown Omaha Residence Inn  
by Marriott

project no.: 11290

drawing referenced:

FP1.00

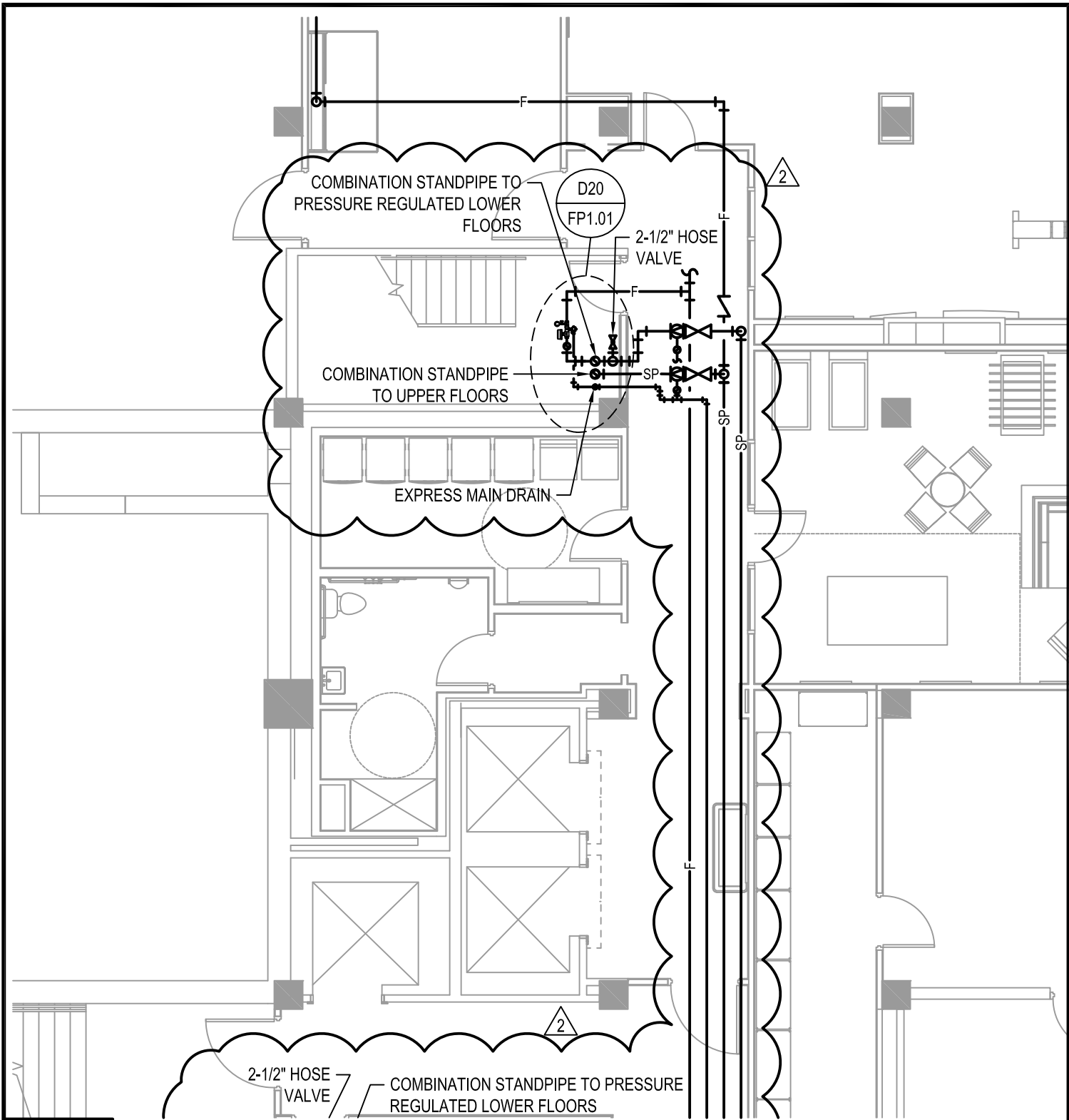
date: 06-27-2012

addendum no.:

2

**FP1.00b**

sketch

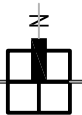


V1

BASEMENT FLOOR PLAN - FIRE PROTECTION

FP1.00

SCALE: 1/8" = 1'-0"



**morrissey**  
engineering inc

mechanical | electrical | technology | commissioning

4940 North 118th Street  
Omaha, NE 68164

P: 402.491.4144

www.morrisseyengineering.com

Downtown Omaha Residence Inn  
by Marriott

project no.: 11290

drawing referenced:

FP1.00

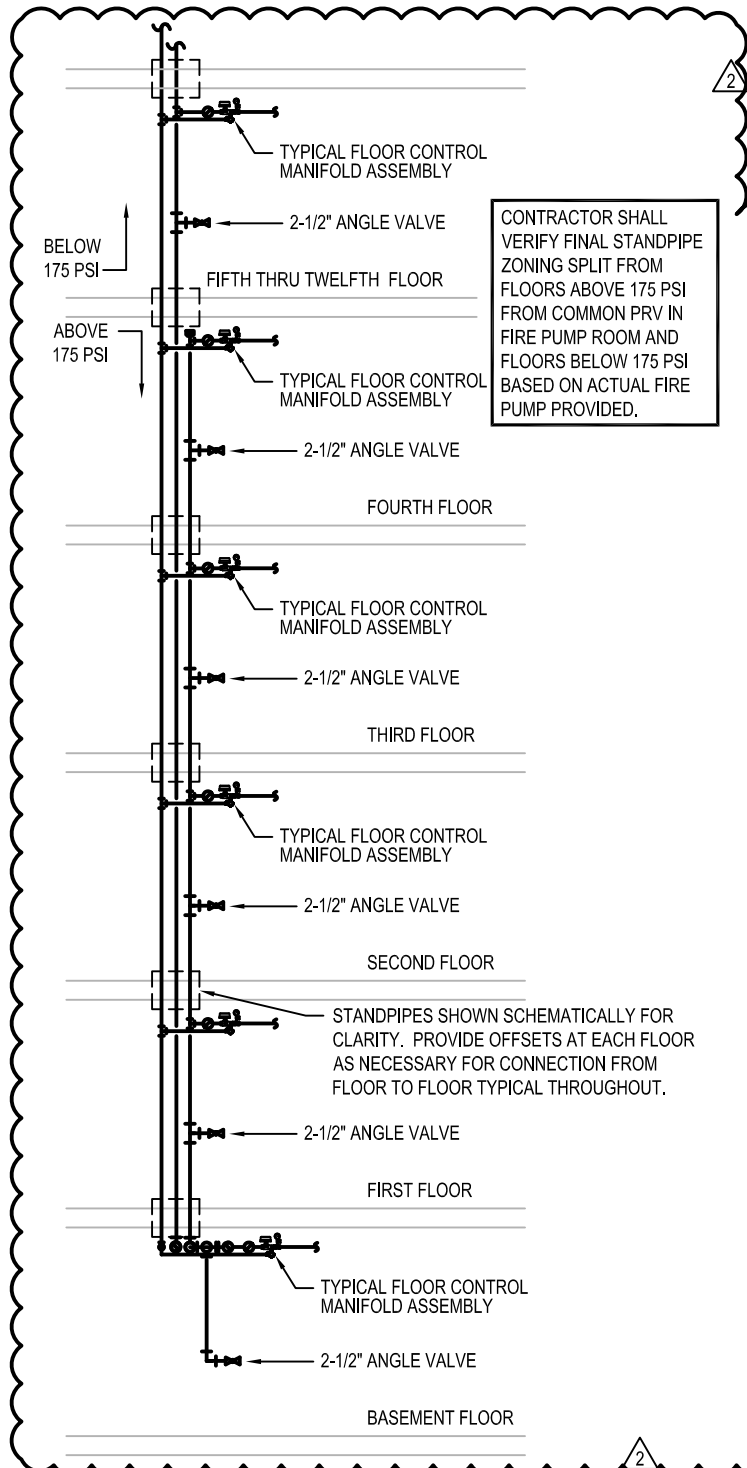
date: 06-27-2012

addendum no.:

2

FP1.00c

sketch



CONTRACTOR SHALL VERIFY FINAL STANDPIPE ZONING SPLIT FROM COMMON PRV IN FIRE PUMP ROOM AND FLOORS BELOW 175 PSI BASED ON ACTUAL FIRE PUMP PROVIDED.

**GENERAL NOTES**

- DO NOT ROUTE PIPING ABOVE ELECTRICAL PANELS. MAINTAIN ALL CODE REQUIRED CLEARANCES (TYP).
- INSTALL ALL VALVES IN ACCESSIBLE LOCATIONS.
- CONTRACTOR SHALL COORDINATE ALL PIPING ROUTING WITH ALL OTHER TRADES. CONTRACTOR SHALL PROVIDE ALL ADDITIONAL OFFSETS AND TRANSITIONS AS REQUIRED TO COMPLETE INSTALLATION.
- ALL WORK SHALL BE PERFORMED IN ACCORDANCE WITH CURRENTLY ADOPTED LOCAL AND STATE CODES AS WELL AS OWNER STANDARDS.
- PIPING SHOWN FOR CLARITY. ROUTE WATER, VENT, AND OTHER PIPING IN CHASES, AND IN WALLS AS REQUIRED.
- SPACE ABOVE CEILINGS IS LIMITED. ROUTE ALL PIPING AS HIGH AS POSSIBLE, TIGHT TO BOTTOM OF STRUCTURE TO MAINTAIN MAXIMUM CEILING HEIGHTS.
- COORDINATE ALL ELECTRICAL REQUIREMENTS WITH ELECTRICAL AND FIRE ALARM CONTRACTORS.

**SPRINKLER NOTE:**

ENTIRE BUILDING SHALL HAVE FIRE PROTECTION SPRINKLER SYSTEM INSTALLED TO MEET THE REQUIREMENTS OF THE NFPA CODES, THE STATE FIRE MARSHAL'S OFFICE, AND THE OWNER'S APPROVING INSURANCE AGENCY. SPRINKLER CONTRACTOR SHALL COORDINATE THE LOCATIONS OF ALL CEILING MOUNTED SPRINKLER HEADS TO AVOID ANY AND ALL INTERFERENCE WITH ALL OTHER TRADES. IF CONFLICTS DO OCCUR SUCH THAT LIGHTS, DUCTS, DIFFUSERS, GRILLES, OR CEILING SYSTEMS CANNOT BE INSTALLED IN THEIR REQUIRED LOCATIONS DUE TO SPRINKLER PIPING INTERFERENCE, THE PIPING SHALL BE RELOCATED OR REROUTED AT NO ADDITIONAL EXPENSE TO THE PROJECT. SPRINKLER CONTRACTOR SHALL MAINTAIN AN ADEQUATE SUPPLY OF EXTRA PIPING, FITTINGS, AND NECESSARY TOOLS TO MAKE FIELD MODIFICATIONS WITHOUT DELAY. AN APPROVED SPRINKLER SHOP DRAWING DOES NOT PRECLUDE REROUTING IF SO ORDERED BY THE ARCHITECT/ENGINEER.

**FLAG NOTES**

- 1 PROVIDE ELECTRIC FIRE PUMP FP-1 PER NFPA-20. CONFIRM FINAL PUMP SIZING BASED ON HYDRAULIC CALCULATIONS. SEE SHEET M7.01 FOR PUMP SCHEDULE.
- 2 PROVIDE JOCKEY PUMP JP-1. SEE SHEET M7.01 FOR PUMP SCHEDULE.
- 3 PROVIDE FIRE PUMP CONTROLLER FPC-1 PER NFPA-20. FIRE PUMP CONTROLLER SHALL INCLUDE AUTOMATIC TRANSFER SWITCH FOR EMERGENCY POWER.
- 4 PROVIDE JOCKEY PUMP CONTROLLER JPC-1 PER NFPA-20.
- 5 PROVIDE NEW BACKFLOW PREVENTER CONNECTED TO EXISTING UNDERGROUND PIPING.

**T19 STANDPIPE ELEVATION - FIRE PROTECTION**

FP1.00 SCALE: NO SCALE

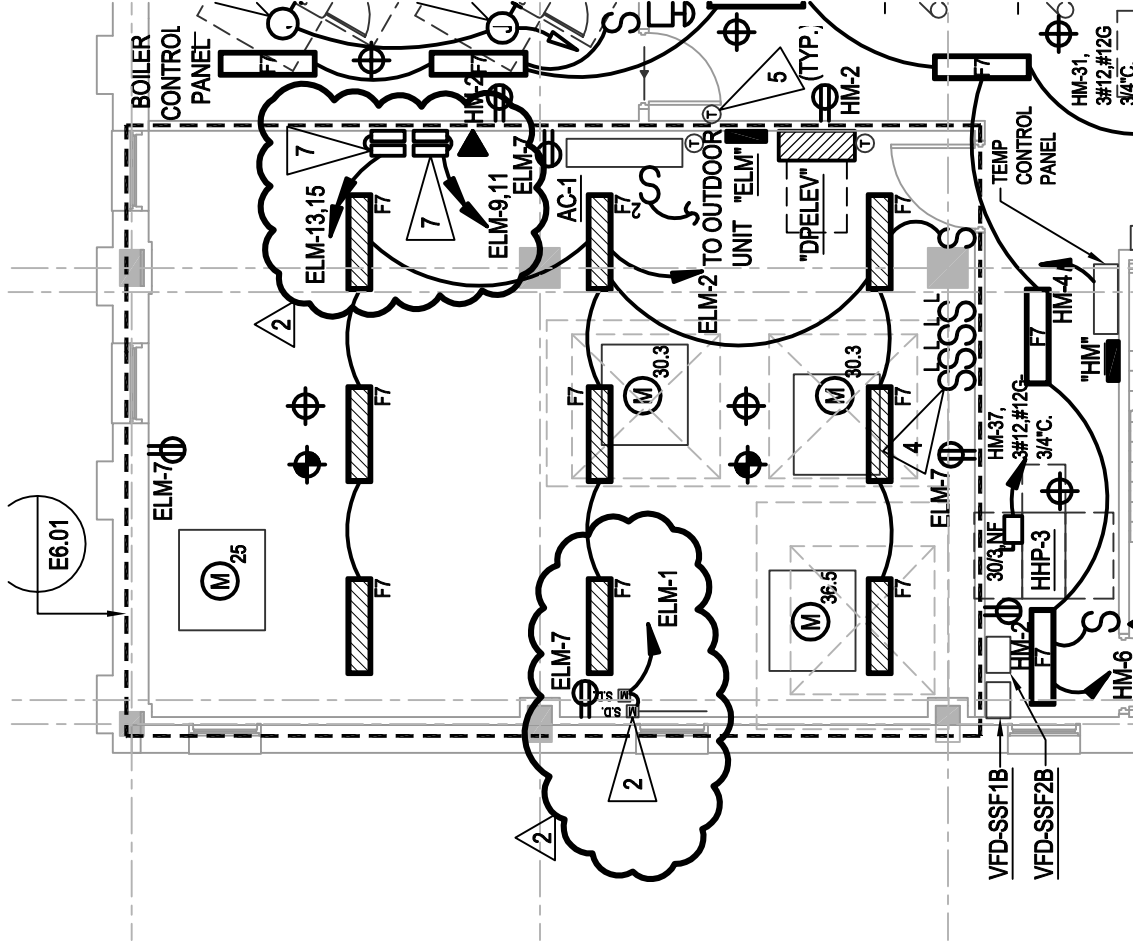
**morrissey engineering inc**  
 mechanical | electrical | technology | commissioning  
 4940 North 118th Street  
 Omaha, NE 68164  
 P: 402.491.4144  
 www.morrisseyengineering.com

**Downtown Omaha Residence Inn by Marriott**

project no.: 11290	drawing referenced: FP1.00	<b>FP1.00d</b>
date: 06-27-2012	addendum no.: 2	

sketch

SUMP PUMP CONTROL PANEL. COORDINATE REQUIREMENTS WITH MECHANICAL CONTRACTOR.



DOWNTOWN OMAHA RESIDENCE INN  
 BY MARRIOTT  
 106 SOUTH 15TH STREET OMAHA, NE



mechanical | electrical | technology | commissioning

4940 North 118th Street  
 Omaha, NE 68164  
 P: 402.491.4144

www.morrisseyengineering.com

project no.:

11290

drawing referenced:

E1.07

date:

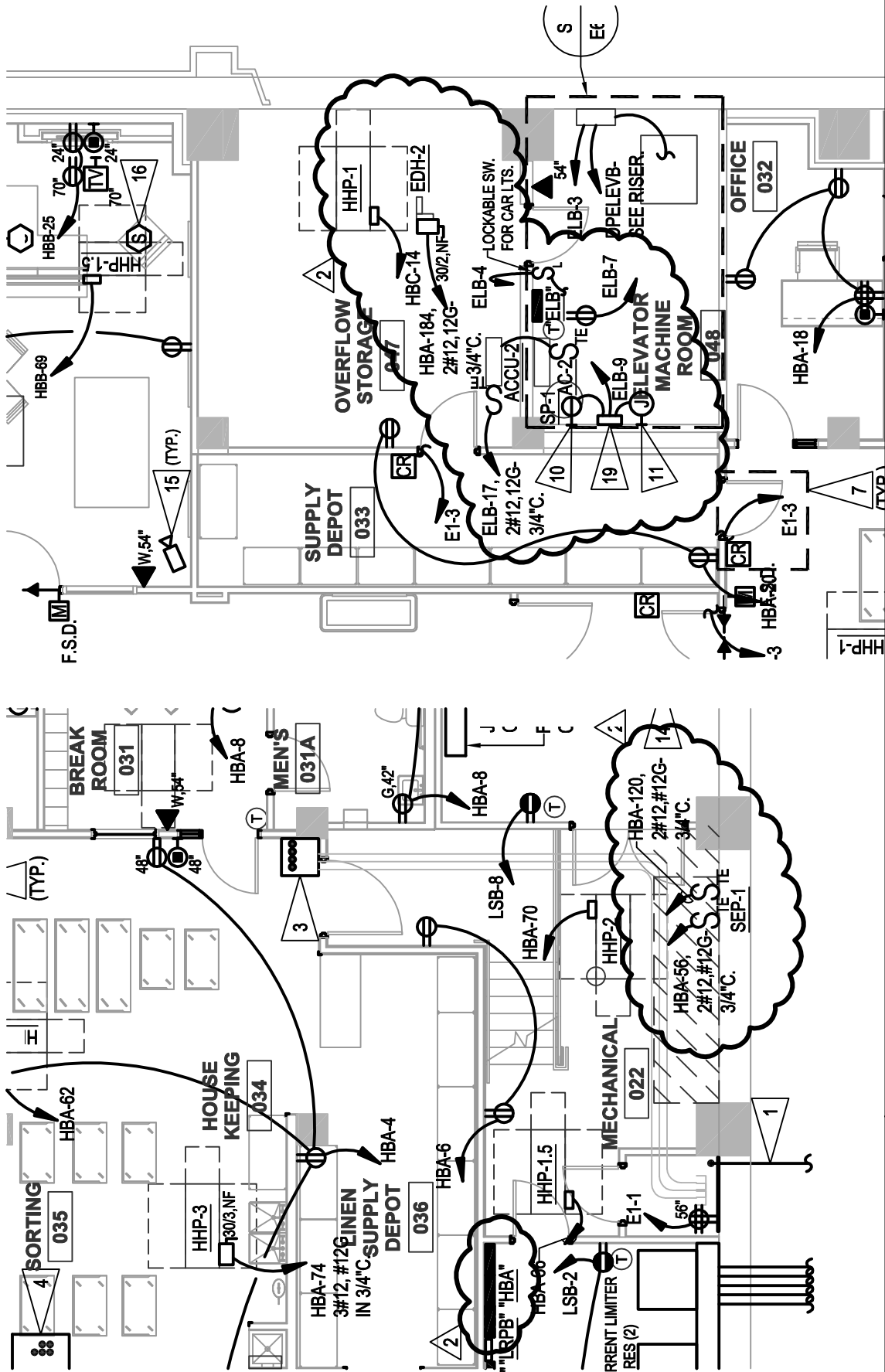
6/27/2012

addendum no.:

2

sketch

E1.07a



**DOWNTOWN OMAHA RESIDENCE INN**  
**BY MARRIOTT**  
**106 SOUTH 15TH STREET OMAHA, NE**

**morrissey engineering inc**  
 mechanical | electrical | technology | commissioning  
 4940 North 118th Street  
 Omaha, NE 68164  
 P: 402.491.4144  
 www.morrisseyengineering.com

project no.:	11290	drawing referenced:	E2.00
date:	6/27/2012	addendum no.:	2

**E2.00a**

### LIGHTING PANEL SCHEDULE

LIGHTING PANEL: ELB VOLTAGE: 208/120V  
 RATING: 100A PHASE: 3  
 MOUNTING: SURFACE WIRE: 4  
 TYPE: MLO W/ GND. BAR A.I.C. RATING: SERIES

DESCRIPTION	O/C	CKT.	O/C	DESCRIPTION
SHAFT DAMPER	20/1	1 2	20/1	UH-2
SHUNT TRIP POWER	20/1	3 4	20/1	CAB LIGHTS
LTG - PIT	20/1	5 6	20/1	SPARE
LTG - MACHINE ROOM	20/1	7 8	20/1	SPARE
SUMP PUMP	20/1	9 10	20/1	SPARE
SPARE	20/1	11 12	20/1	SPARE
SPARE	20/1	13 14	20/1	SPARE
SPARE	20/1	15 16	20/1	SPARE
AC-2	15/2	17 18		SPACE
	-	19 20		SPACE
SPACE		21 22		SPACE
SPACE		23 24		SPACE
SPACE		25 26		SPACE
SPACE		27 28		SPACE
SPACE		29 30		SPACE
SPACE		31 32		SPACE
SPACE		33 34		SPACE
SPACE		35 36		SPACE
		37 38		
		39 40		
		41 42		

### LIGHTING PANEL SCHEDULE (3RD TUB)

LIGHTING PANEL: HBA VOLTAGE: 208/120V  
 RATING: 400A PHASE: 3  
 MOUNTING: SURFACE WIRE: 4  
 TYPE: MLO W/FEED THRU LUGS AND GND. BAR A.I.C. RATING: SERIES

DESCRIPTION	O/C	CKT.	O/C	DESCRIPTION
SPARE	20/1	85 56	20/2	SEP-1
SPARE	20/1	87 88	-	
SPARE	20/1	89 120	20/2	SEP-1
SPARE	20/1	91 152	-	
SPARE	20/1	93 184	20/2	EDH-2
SPARE	20/1	95 216	-	
SPARE	20/1	97 248		SPACE
SPARE	20/1	99 280		SPACE
SPARE	20/1	101 312		SPACE
SPARE	20/1	105 376		SPACE
SPACE		107 408		SPACE
SPACE		109 440		SPACE
SPACE		111 472		SPACE
SPACE		113 504		SPACE
SPACE		115 536		SPACE
SPACE		117 568		SPACE
SPACE		119 600		SPACE
SPACE		121 632		SPACE
SPACE		123 664		SPACE
SPACE		125 696		SPACE



mechanical | electrical | technology | commissioning  
 4940 North 118th Street  
 Omaha, NE 68164  
 P: 402.491.4144  
 www.morrisseyengineering.com

DOWNTOWN OMAHA RESIDENCE INN  
 BY MARRIOTT  
 106 SOUTH 15TH STREET OMAHA, NE

project no.:	11290	drawing referenced:	E5.05
date:	6/27/2012	addendum no.:	2

sketch  
**E5.05b**