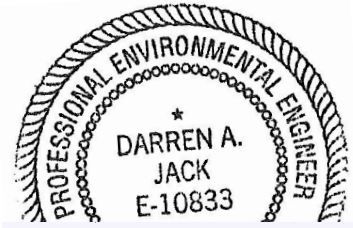


**ADDENDUM NO. 1**

**PROJECT NAME:** Former State Fair Park Demolition Phase II  
**UNL PROJECT NUMBER:** C975P061

**CONSULTANT:** WLA Consulting, Inc.  
**ADDRESS:** 1640 "L" Street, Suite D  
Lincoln, NE 68508

**DATE OF ISSUANCE:** June 15, 2012  
**DATE OF BID OPENING:** July 10, 2012



*Darren Jack*  
6/14/2012

The bid documents dated June 7, 2012 for the above referenced project are amended by this addendum.

NOTICE: This Addendum is issued to all interested prospective bidders as an amendment to the project manual or other parts of the bidding (contract) documents for the above named project. Reference to this Addendum must be included in the Bid proposal. The information contained herein shall be fully incorporated into the contract documents as though originally included therein.

---

**QUESTIONS AND MODIFICATIONS TO THE PROJECT MANUAL:**

**SECTION NO. – REFERENCE (LISTED IN ORDER)**

No changes or modifications to the project manual in Addendum No. 1.

**QUESTIONS AND MODIFICATIONS TO THE DRAWINGS:**

**DRAWING NO. – REFERENCE (LISTED IN ORDER)**

**MODIFICATIONS:**

DRAWING NO. C-9

1. **REPLACE** entire sheet with drawing attached to this Addendum. This drawing reflects the addition of Building No. 9 for demolition.

DRAWING NO. C-11

1. **REPLACE** entire sheet with drawing attached to this Addendum. This drawing reflects the addition of Building No. 52 concrete slab for demolition. The recycled concrete storage area has been relocated.

ADDENDUM NO. 1

Project Name: Former State Fair Park Demolition Phase II

Project Number: C975P061

2 of 2

DRAWING NO. C-18

1. **REPLACE** entire sheet with drawing attached to this Addendum. This drawing reflects the relocation of the recycled concrete storage area.

DRAWING NO. E-1

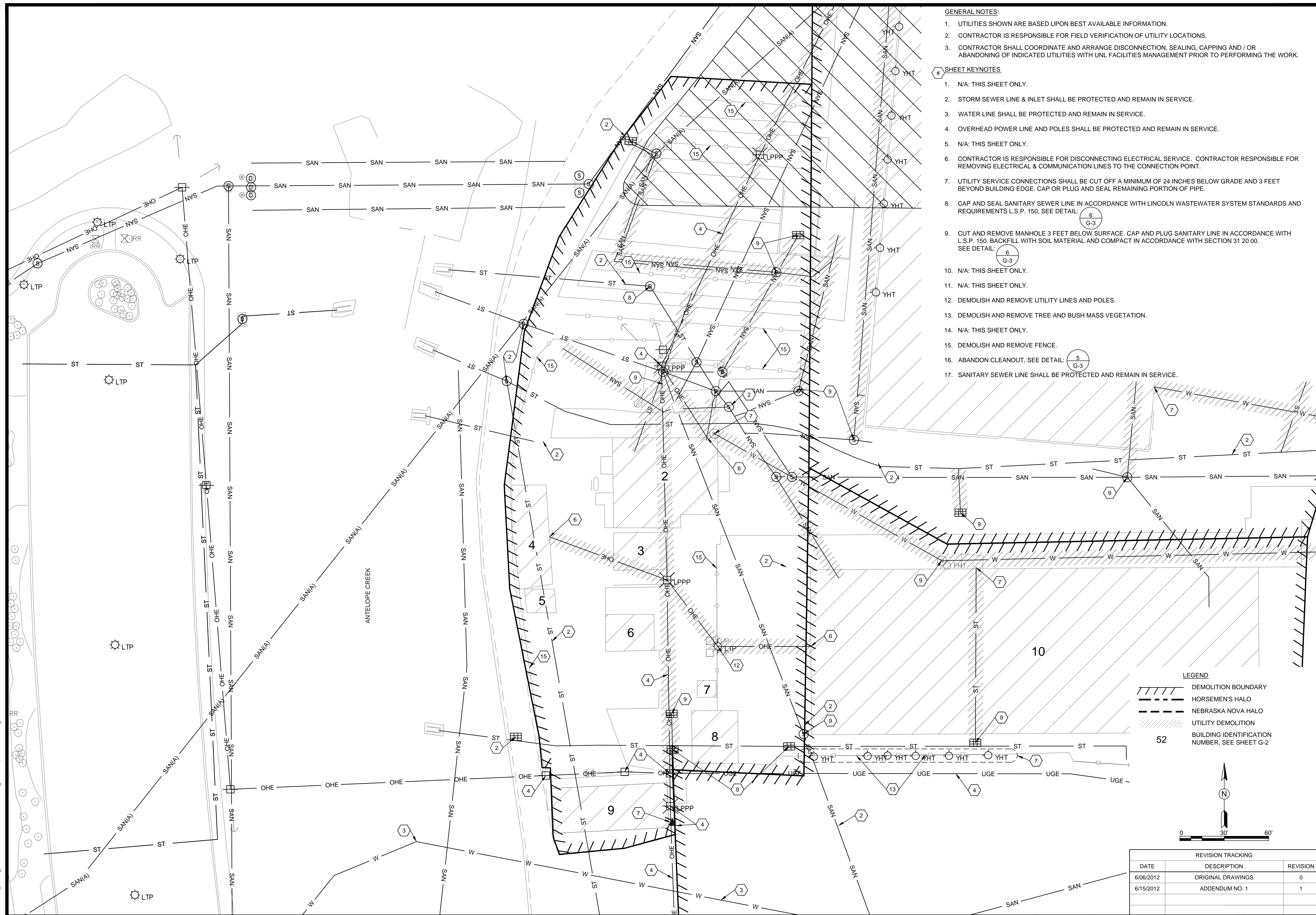
1. **REPLACE** entire sheet with drawing attached to this Addendum. This drawing reflects the modifications to the parking lot lighting.

DRAWING NO. E-2

1. **REPLACE** entire sheet with drawing attached to this Addendum. This drawing reflects the modifications to the parking lot lighting.

**END OF ADDENDUM NO. 1**

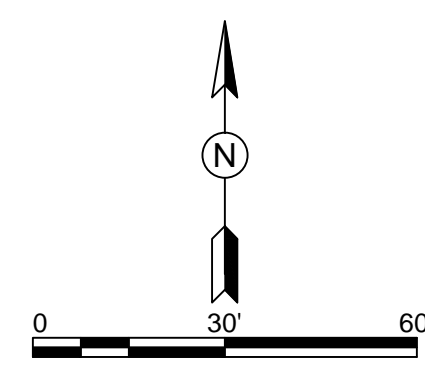
R:\Drawings\117-009 UNL Phase 2 Demolition.dwg 11/7/09C(ADD)SitePlan.dwg C-9 6/15/2012 8:15:53 AM



- GENERAL NOTES:**
- UTILITIES SHOWN ARE BASED UPON BEST AVAILABLE INFORMATION.
  - CONTRACTOR IS RESPONSIBLE FOR FIELD VERIFICATION OF UTILITY LOCATIONS.
  - CONTRACTOR SHALL COORDINATE AND ARRANGE DISCONNECTION, SEALING, CAPPING AND / OR ABANDONING OF INDICATED UTILITIES WITH UNL FACILITIES MANAGEMENT PRIOR TO PERFORMING THE WORK.
- # SHEET KEYNOTES**
- N/A: THIS SHEET ONLY.
  - STORM SEWER LINE & INLET SHALL BE PROTECTED AND REMAIN IN SERVICE.
  - WATER LINE SHALL BE PROTECTED AND REMAIN IN SERVICE.
  - OVERHEAD POWER LINE AND POLES SHALL BE PROTECTED AND REMAIN IN SERVICE.
  - N/A: THIS SHEET ONLY.
  - CONTRACTOR IS RESPONSIBLE FOR DISCONNECTING ELECTRICAL SERVICE. CONTRACTOR RESPONSIBLE FOR REMOVING ELECTRICAL & COMMUNICATION LINES TO THE CONNECTION POINT.
  - UTILITY SERVICE CONNECTIONS SHALL BE CUT OFF A MINIMUM OF 24 INCHES BELOW GRADE AND 3 FEET BEYOND BUILDING EDGE. CAP OR PLUG AND SEAL REMAINING PORTION OF PIPE.
  - CAP AND SEAL SANITARY SEWER LINE IN ACCORDANCE WITH LINCOLN WASTEWATER SYSTEM STANDARDS AND REQUIREMENTS L.S.P. 150. SEE DETAIL:
  - CUT AND REMOVE MANHOLE 3 FEET BELOW SURFACE. CAP AND PLUG SANITARY LINE IN ACCORDANCE WITH L.S.P. 150. BACKFILL WITH SOIL MATERIAL AND COMPACT IN ACCORDANCE WITH SECTION 31 20 00. SEE DETAIL:
  - N/A: THIS SHEET ONLY.
  - N/A: THIS SHEET ONLY.
  - DEMOLISH AND REMOVE UTILITY LINES AND POLES.
  - DEMOLISH AND REMOVE TREE AND BUSH MASS VEGETATION.
  - N/A: THIS SHEET ONLY.
  - DEMOLISH AND REMOVE FENCE.
  - ABANDON CLEANOUT, SEE DETAIL:
  - SANITARY SEWER LINE SHALL BE PROTECTED AND REMAIN IN SERVICE.

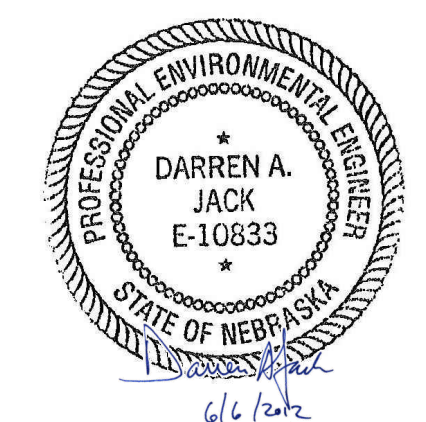
**LEGEND**

	DEMOLITION BOUNDARY
	HORSEMEN'S HALO
	NEBRASKA NOVA HALO
	UTILITY DEMOLITION
	BUILDING IDENTIFICATION NUMBER, SEE SHEET G-2



REVISION TRACKING		
DATE	DESCRIPTION	REVISION
6/06/2012	ORIGINAL DRAWINGS	0
6/15/2012	ADDENDUM NO. 1	1

UNIVERSITY OF NEBRASKA - LINCOLN  
 FORMER STATE FAIR PARK DEMO PHASE II - UNL PROJ. NO. C975P061  
 LINCOLN, NEBRASKA  
 BUILDING NO. 2, 3, 4, 5, 6, 7, 8 & 9 DEMOLITION PLAN



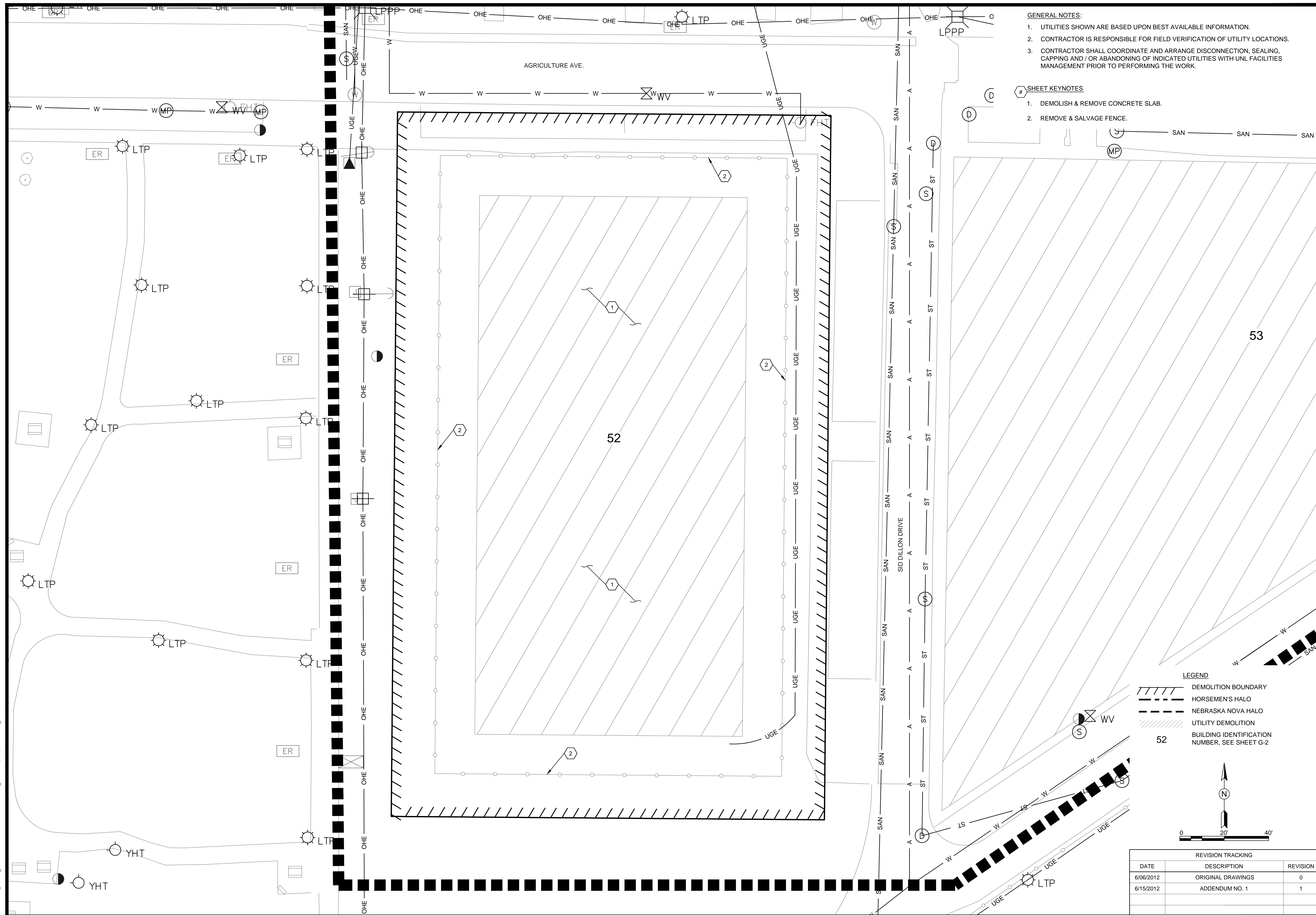
PROJECT NUMBER: 117-009  
 DESIGNED: DAJ  
 DRAWN: SLK  
 CHECKED: TAS

1640 "L" STREET, SUITE D  
 LINCOLN, NE 68508  
 TEL (402) 475-8588  
 FAX (402) 477-1956  
 www.WLA-consulting.com

**WLA Consulting, Inc.**  
 Engineers & Scientists  
**WaterLandAir**

DRAWING NUMBER: C-9  
 FILE: 117009C(ADD)SITEPLAN

R:\Drawings\117-009 UNL Phase 2 Demolition.dwg, 117009C(ADD)SitePlan.dwg, C-11, 6/15/2012 8:15:21 AM

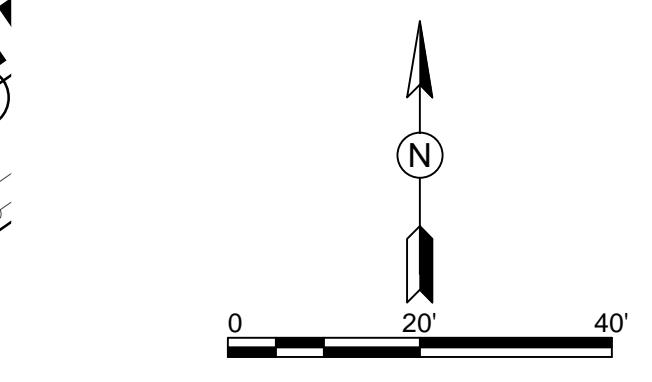


- GENERAL NOTES:**
1. UTILITIES SHOWN ARE BASED UPON BEST AVAILABLE INFORMATION.
  2. CONTRACTOR IS RESPONSIBLE FOR FIELD VERIFICATION OF UTILITY LOCATIONS.
  3. CONTRACTOR SHALL COORDINATE AND ARRANGE DISCONNECTION, SEALING, CAPPING AND / OR ABANDONING OF INDICATED UTILITIES WITH UNL FACILITIES MANAGEMENT PRIOR TO PERFORMING THE WORK.

- # SHEET KEYNOTES**
1. DEMOLISH & REMOVE CONCRETE SLAB.
  2. REMOVE & SALVAGE FENCE.

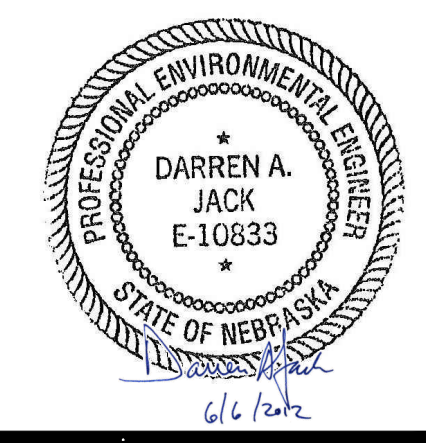
**LEGEND**

	DEMOLITION BOUNDARY
	HORSEMEN'S HALO
	NEBRASKA NOVA HALO
	UTILITY DEMOLITION
	BUILDING IDENTIFICATION NUMBER, SEE SHEET G-2



REVISION TRACKING		
DATE	DESCRIPTION	REVISION
6/06/2012	ORIGINAL DRAWINGS	0
6/15/2012	ADDENDUM NO. 1	1

UNIVERSITY OF NEBRASKA - LINCOLN  
 FORMER STATE FAIR PARK DEMO PHASE II - UNL PROJ. NO. C975P061  
 LINCOLN, NEBRASKA  
 BUILDING NO. 52 DEMOLITION PLAN



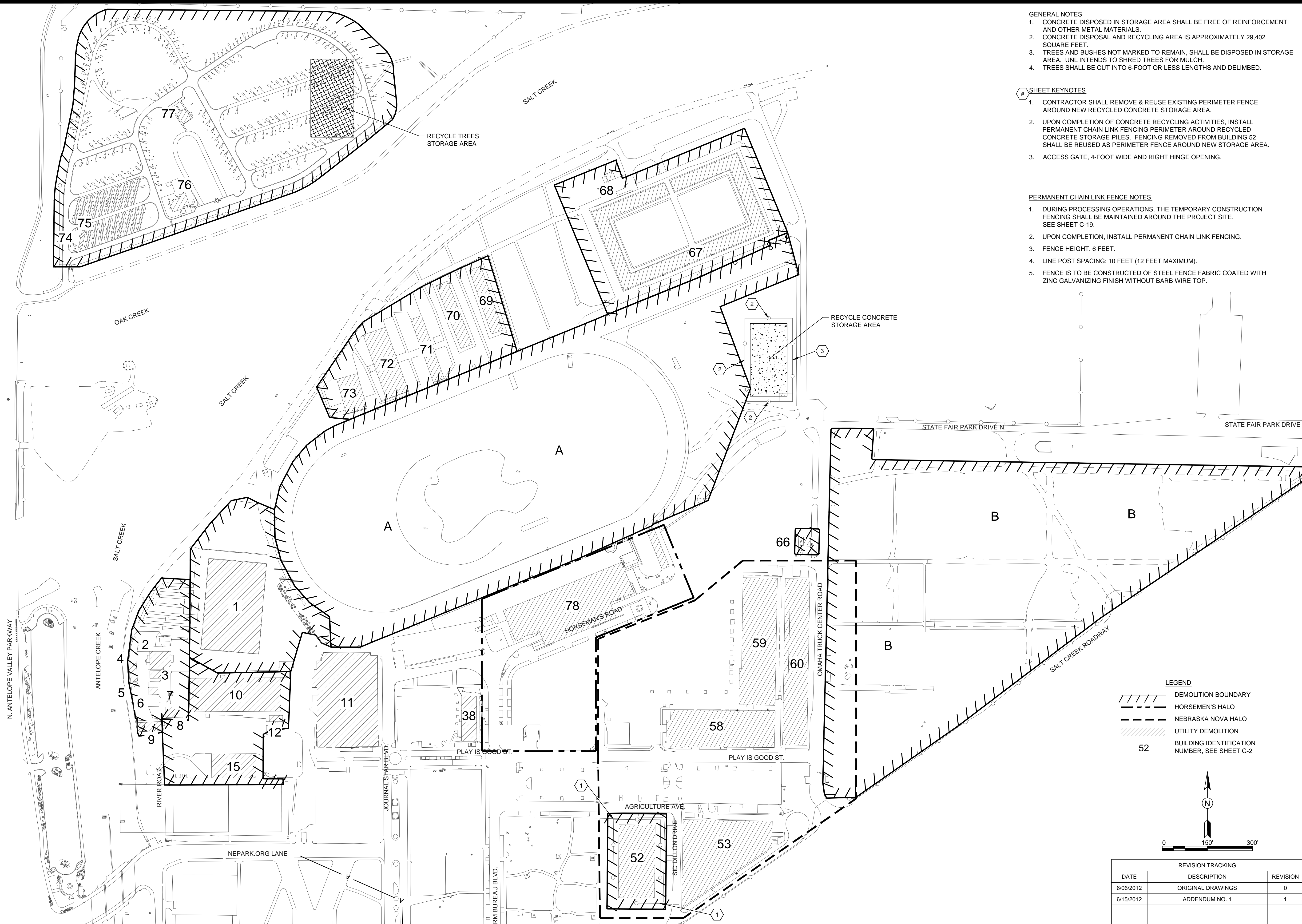
PROJECT NUMBER: 117-009  
 DESIGNED: DAJ  
 DRAWN: SLK  
 CHECKED: TAS

1640 "L" STREET, SUITE D  
 LINCOLN, NE 68508  
 TEL (402) 475-8588  
 FAX (402) 477-1956  
 www.WLA-consulting.com



DRAWING NUMBER: C-11  
 FILE: 117009C(ADD)SITEPLAN

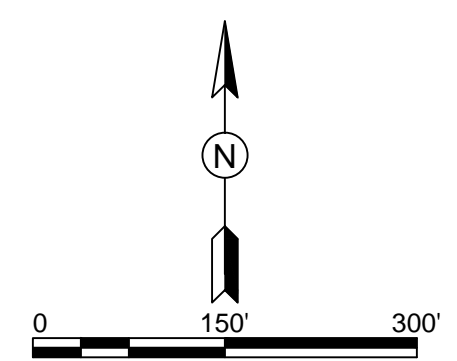
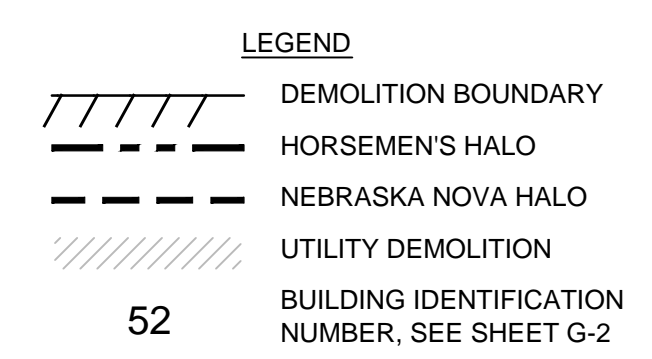
R:\Drawings\117-009 UNL Phase 2 Demolition.dwg, 117009C(ADD)SitePlan.dwg, C-18, 6/15/2012 8:16:24 AM



- GENERAL NOTES**
1. CONCRETE DISPOSED IN STORAGE AREA SHALL BE FREE OF REINFORCEMENT AND OTHER METAL MATERIALS.
  2. CONCRETE DISPOSAL AND RECYCLING AREA IS APPROXIMATELY 29,402 SQUARE FEET.
  3. TREES AND BUSHES NOT MARKED TO REMAIN, SHALL BE DISPOSED IN STORAGE AREA. UNL INTENDS TO SHRED TREES FOR MULCH.
  4. TREES SHALL BE CUT INTO 6-FOOT OR LESS LENGTHS AND DELIMBED.

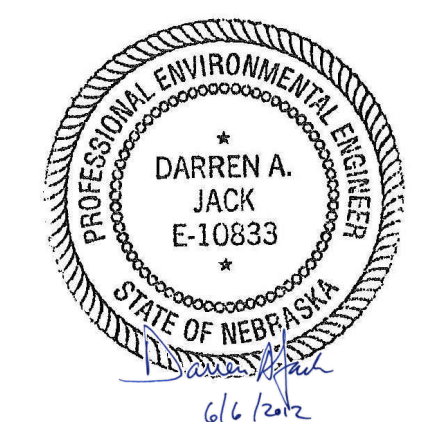
- # SHEET KEYNOTES**
1. CONTRACTOR SHALL REMOVE & REUSE EXISTING PERIMETER FENCE AROUND NEW RECYCLED CONCRETE STORAGE AREA.
  2. UPON COMPLETION OF CONCRETE RECYCLING ACTIVITIES, INSTALL PERMANENT CHAIN LINK FENCING PERIMETER AROUND RECYCLED CONCRETE STORAGE PILES. FENCING REMOVED FROM BUILDING 52 SHALL BE REUSED AS PERIMETER FENCE AROUND NEW STORAGE AREA.
  3. ACCESS GATE, 4-FOOT WIDE AND RIGHT HINGE OPENING.

- PERMANENT CHAIN LINK FENCE NOTES**
1. DURING PROCESSING OPERATIONS, THE TEMPORARY CONSTRUCTION FENCING SHALL BE MAINTAINED AROUND THE PROJECT SITE. SEE SHEET C-19.
  2. UPON COMPLETION, INSTALL PERMANENT CHAIN LINK FENCING.
  3. FENCE HEIGHT: 6 FEET.
  4. LINE POST SPACING: 10 FEET (12 FEET MAXIMUM).
  5. FENCE IS TO BE CONSTRUCTED OF STEEL FENCE FABRIC COATED WITH ZINC GALVANIZING FINISH WITHOUT BARB WIRE TOP.



REVISION TRACKING		
DATE	DESCRIPTION	REVISION
6/06/2012	ORIGINAL DRAWINGS	0
6/15/2012	ADDENDUM NO. 1	1

UNIVERSITY OF NEBRASKA - LINCOLN  
 FORMER STATE FAIR PARK DEMO PHASE II - UNL PROJ. NO. C975P061  
 LINCOLN, NEBRASKA  
 TREE & CONCRETE RECYCLED MATERIALS STORAGE PLAN



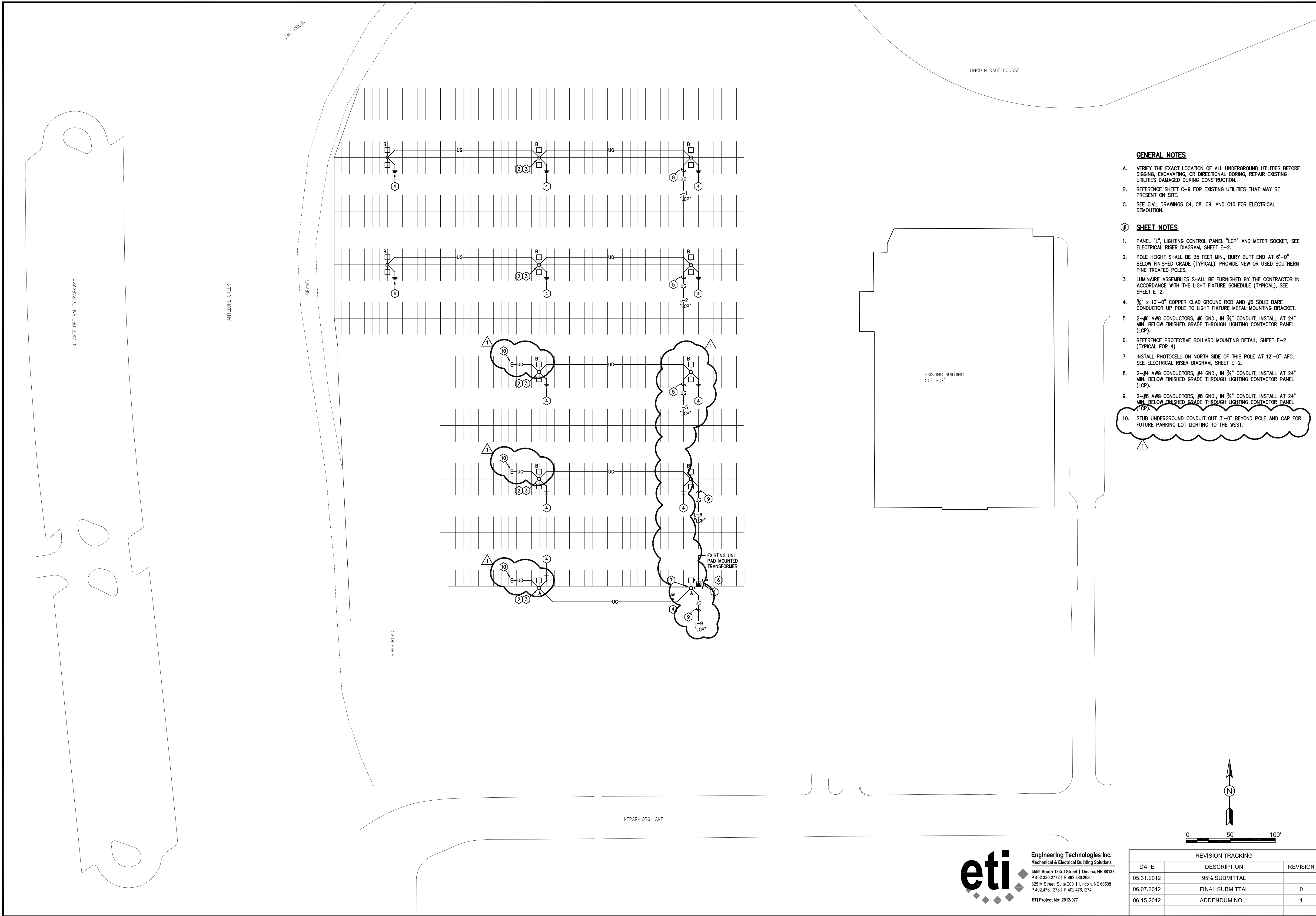
PROJECT NUMBER: 117-009  
 DESIGNED: DAJ  
 DRAWN: SLK  
 CHECKED: TAS

1640 "L" STREET, SUITE D  
 LINCOLN, NE 68508  
 TEL (402) 475-8588  
 FAX (402) 477-1956  
 www.WLA-consulting.com



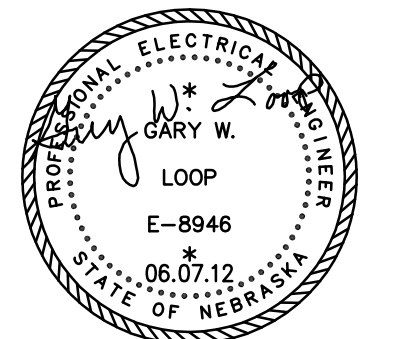
DRAWING NUMBER C-18

FILE:117009C(ADD)SITEPLAN



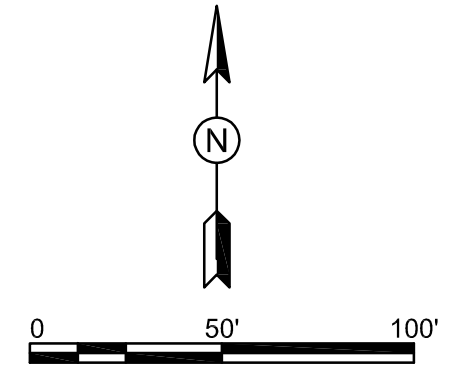
- GENERAL NOTES**
- VERIFY THE EXACT LOCATION OF ALL UNDERGROUND UTILITIES BEFORE DIGGING, EXCAVATING, OR DIRECTIONAL BORING, REPAIR EXISTING UTILITIES DAMAGED DURING CONSTRUCTION.
  - REFERENCE SHEET C-9 FOR EXISTING UTILITIES THAT MAY BE PRESENT ON SITE.
  - SEE CIVIL DRAWINGS C4, C8, C9, AND C10 FOR ELECTRICAL DEMOLITION.
- SHEET NOTES**
- PANEL "L", LIGHTING CONTROL PANEL "LCP" AND METER SOCKET, SEE ELECTRICAL RISER DIAGRAM, SHEET E-2.
  - POLE HEIGHT SHALL BE 35 FEET MIN., BURY BUTT END AT 6'-0" BELOW FINISHED GRADE (TYPICAL). PROVIDE NEW OR USED SOUTHERN PINE TREATED POLES.
  - LUMINAIRE ASSEMBLIES SHALL BE FURNISHED BY THE CONTRACTOR IN ACCORDANCE WITH THE LIGHT FIXTURE SCHEDULE (TYPICAL), SEE SHEET E-2.
  - 5/8" x 10'-0" COPPER CLAD GROUND ROD AND #6 SOLID BARE CONDUCTOR UP POLE TO LIGHT FIXTURE METAL MOUNTING BRACKET.
  - 2-#6 AWG CONDUCTORS, #6 GND., IN 3/4" CONDUIT, INSTALL AT 24" MIN. BELOW FINISHED GRADE THROUGH LIGHTING CONTACTOR PANEL (LCP).
  - REFERENCE PROTECTIVE BOLLARD MOUNTING DETAIL, SHEET E-2 (TYPICAL FOR 4).
  - INSTALL PHOTOCELL ON NORTH SIDE OF THIS POLE AT 12'-0" AFG, SEE ELECTRICAL RISER DIAGRAM, SHEET E-2.
  - 2-#4 AWG CONDUCTORS, #4 GND., IN 3/4" CONDUIT, INSTALL AT 24" MIN. BELOW FINISHED GRADE THROUGH LIGHTING CONTACTOR PANEL (LCP).
  - 2-#8 AWG CONDUCTORS, #8 GND., IN 3/4" CONDUIT, INSTALL AT 24" MIN. BELOW FINISHED GRADE THROUGH LIGHTING CONTACTOR PANEL (LCP).
  - STUB UNDERGROUND CONDUIT OUT 3'-0" BEYOND POLE AND CAP FOR FUTURE PARKING LOT LIGHTING TO THE WEST.

UNIVERSITY OF NEBRASKA - LINCOLN  
 INNOVATION CAMPUS BUILDING REMOVAL - UNL PROJ. NO. SR460501  
 LINCOLN, NEBRASKA  
 PARKING LOT LIGHTING PLAN



PROJECT NUMBER: 117-009  
 DESIGNED: GWL  
 DRAWN: ADL  
 CHECKED: GWL

1640 "L" STREET, SUITE D  
 LINCOLN, NE 68508  
 TEL (402) 475-8588  
 FAX (402) 477-1956  
 www.WLA-consulting.com



REVISION TRACKING		
DATE	DESCRIPTION	REVISION
05.31.2012	95% SUBMITTAL	
06.07.2012	FINAL SUBMITTAL	0
06.15.2012	ADDENDUM NO. 1	1

SHEET  
 E-1

**eti** Engineering Technologies Inc.  
 Mechanical & Electrical Building Solutions  
 4559 South 133rd Street | Omaha, NE 68137  
 P 402.330.2772 | F 402.330.2630  
 825 M Street, Suite 200 | Lincoln, NE 68508  
 P 402.476.1273 | F 402.476.1274  
 ETI Project No: 2012-077

LIGHT FIXTURE SCHEDULE							
TYPE	DESCRIPTION	LAMP		MOUNTING	MANUFACTURER	CATALOG NUMBER	NOTES
		NO.	TYPE				
A	SINGLE HEAD METAL HALIDE AREA LUMINAIRE, FULL CUTOFF REFLECTOR, TYPE III DISTRIBUTION, BRONZE COLOR, ARM MOUNTED TO WOOD POLE	1	400W PSMH	POLE MOUNTED	LITHONIA	KAD-400M-R3-TB-SCWA-WD-09-LPI	-
B	DOUBLE HEAD METAL HALIDE AREA LUMINAIRE (HEADS SEPARATED BY 180°), FULL CUTOFF REFLECTOR, TYPE III DISTRIBUTION, BRONZE COLOR, ARM MOUNTED TO WOOD POLE	2	400W PSMH	POLE MOUNTED	LITHONIA	KAD-(2)400M-R3-TB-SCWA-WD-09-LPI	-

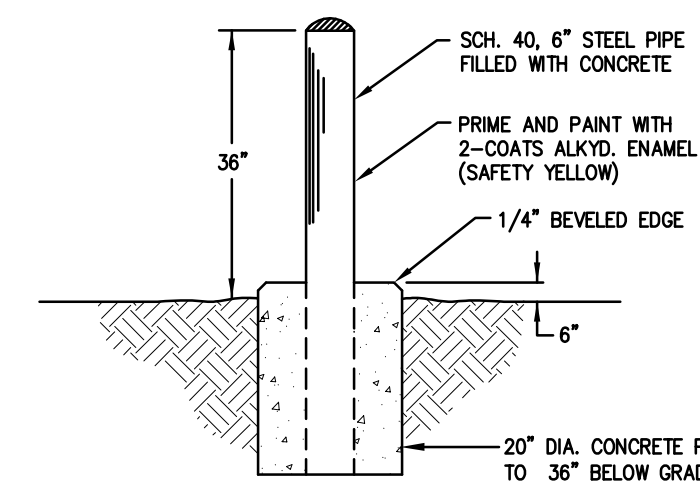
NOTES:  
-

PANEL SCHEDULE											
PANEL L (NOTE 1)	VOLTAGE		PHASE		22 KAIC RMS		100 A		MAIN BREAKER		LOAD DESCRIPTION
	LOAD	TYPE	POLES	AMPS	NO.	PHASE	NO.	POLES	TYPE	VA	
LIGHTING	1,440	L	2	20	1	A	2	20	L	1,440	LIGHTING
-	1,440	L	-	-	3	B	4	-	L	1,440	-
LIGHTING	960	L	2	20	5	A	6	20	L	960	LIGHTING
-	960	L	-	-	7	B	8	-	L	960	-
LIGHTING	480	L	2	20	9	A	10	20	R	900	GFCI OUTLET
-	480	L	-	-	11	B	12	20	S	1,000	SPARE
PHOTOCELL	150	L	1	15	13	A	14	20	1	S	1,000
SPACE ONLY	-	-	-	-	1	B	16	20	1	-	SPACE ONLY
SPACE ONLY	-	-	-	-	17	A	18	20	1	-	SPACE ONLY
SPACE ONLY	-	-	-	-	19	B	20	20	1	-	SPACE ONLY

LOAD INFORMATION		
	KVA	AMPS
TOTAL CONNECTED LOAD	14	65
EST. MAX DEMAND	13	63

NOTES:  
1. PROVIDE NEMA 3R ENCLOSURE.

- ELECTRICAL SYMBOLS**
- A □ POLE MOUNTED LIGHT FIXTURE, LETTER = TYPE
  - ① PLAN OR DETAIL NOTE IDENTIFICATION
  - UGE UNDERGROUND ELECTRICAL
  - OHE OVERHEAD ELECTRICAL
  - UTILITY CO. POWER POLE
  - ⊥ GROUND CONNECTION
  - A AMPERES
  - AFG ABOVE FINISHED GRADE
  - AWG AMERICAN WIRE GAUGE
  - C CONDUIT
  - CU COPPER
  - GND GROUND
  - KVA KILOVOLT AMPERES
  - KW KILOWATT
  - MAX MAXIMUM
  - MIN MINIMUM
  - MTD MOUNTED
  - NEC NATIONAL ELECTRICAL CODE
  - P POLE
  - PNL PANELBOARD
  - UNL UNIVERSITY OF NEBRASKA - LINCOLN
  - V VOLTS
  - W WATT
  - WP INDICATES WEATHERPROOF
  - ☉ PHOTOCELL

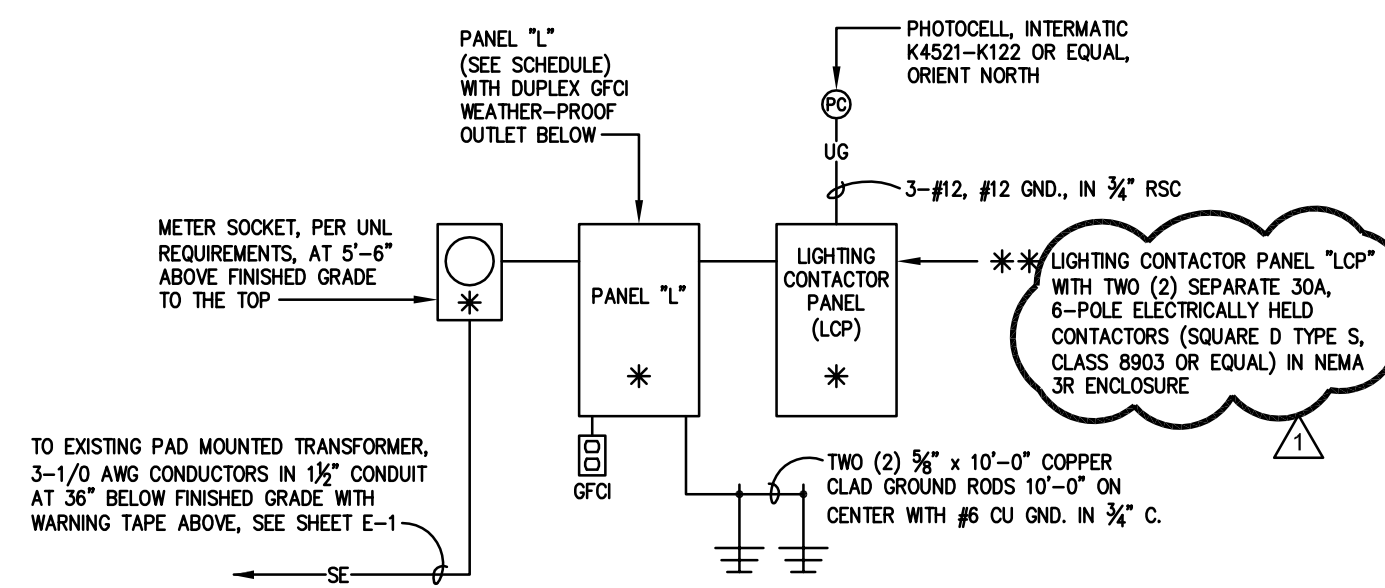


**PROTECTIVE BOLLARD MOUNTING DETAIL**  
NO SCALE

\* INSTALL EQUIPMENT ON COMMON MOUNTING BRACKET, CONSISTING OF 6" SQUARE REDWOOD POSTS AND CROSS MEMBERS AND GALVANIZED HARDWARE. BURY POSTS 3'-0" MINIMUM BELOW FINISHED GRADE.

\*\* CONTACTOR FOR LIGHTING CIRCUITS L-2 AND L-6 SHALL BE CONTROLLED BY PHOTOCELL AND MANUALLY DE-ENERGIZED BY BREAKER WHEN PARKING LOT IS NOT IN USE.

\*\* CONTACTOR FOR LIGHTING CIRCUITS L-1, L-5, AND L-9 SHALL REMAIN ON AT NIGHT AND BE CONTROLLED BY PHOTOCELL.



**ELECTRICAL RISER DIAGRAM**  
NO SCALE

**ELECTRICAL SPECIFICATIONS**

**RULES AND REGULATIONS**

ALL WORK, MATERIALS, AND MANNER OF PLACING MATERIAL OF THIS CONTRACT SHALL BE IN STRICT ACCORDANCE WITH THE LATEST REQUIREMENTS OF THE NATIONAL FIRE PROTECTION ASSOCIATION (SEE PARTICULARLY PAMPHLETS 101, 70, AND 90A) AND WITH THE MUNICIPAL AND STATE LAWS AND ORDINANCES RELATING TO THIS WORK. ALL ELECTRICAL MATERIALS USED IN THIS WORK SHALL BE APPROVED BY THE UNDERWRITER'S LABORATORIES AND SHALL BEAR THEIR LABEL OF APPROVAL. IN EVENT OF CONFLICT BETWEEN THE PLANS AND/OR SPECIFICATIONS AND GOVERNING LAWS OR ORDINANCES, THE MORE STRINGENT SHALL SUPERSEDE.

**PERMITS, LICENSES, AND FEES**

THE CONTRACTOR SHALL FAMILIARIZE HIMSELF WITH ALL REQUIREMENTS AS TO PERMITS, LICENSES, FEES, CODES, AND ORDINANCES AND ARRANGE TO COMPLY WITH THEM. ALL PERMITS, LICENSES, FEES, AND INSPECTIONS REQUIRED FOR THE WORK UNDER THIS CONTRACT SHALL BE OBTAINED AND PAID FOR BY THE CONTRACTOR UNLESS OTHERWISE SPECIFIED.

**METHOD OF WIRING**

ALL WIRING SHALL BE INSTALLED IN CONDUIT RACEWAYS UNLESS OTHERWISE INDICATED HEREIN OR SHOWN ON THE DRAWINGS. ALL CONDUIT RUNS SHOWN ARE DIAGRAMMATIC, EXACT LOCATIONS SHALL BE DETERMINED IN THE FIELD. ALL RACEWAYS SHALL BE SIZED PER THE N.E.C. NO CONDUIT SMALLER THAN 3/4 INCH SHALL BE PERMITTED FOR POWER DISTRIBUTION WIRING. ALL WIRING INSTALLED BELOW CONCRETE SLABS ON GRADE, ALL ABOVE GRADE EXTERIOR WIRING, AND ALL WIRING EXPOSED TO MOISTURE OR PHYSICAL DAMAGE SHALL BE INSTALLED IN RIGID STEEL CONDUIT. ALL EXTERIOR UNDERGROUND WIRING TO BE INSTALLED IN RIGID PVC CONDUIT UNLESS OTHERWISE NOTED. UNLESS OTHERWISE SHOWN, ALL CIRCUITS ARE #12 THWN/THHN.

**WARRANTY**

THE CONTRACTOR SHALL WARRANT ALL MATERIAL AND WORKMANSHIP UNDER THIS CONTRACT FOR A PERIOD OF ONE YEAR FROM RECEIPT OF WRITTEN FINAL ACCEPTANCE. HE SHALL REPAIR OR REPLACE, FREE OF CHARGE, ANY APPARATUS WHICH SHALL BE DEFECTIVE DURING THAT PERIOD OF TIME, WHICH IS DEFECTIVE DUE TO FAULTY MATERIAL OF WORKMANSHIP.

**GROUNDING**

ALL NEUTRAL CONDUCTORS, CONDUIT SYSTEMS, CABINETS, EQUIPMENT, AND OTHER ELECTRICAL EQUIPMENT SHALL BE GROUNDING IN ACCORDANCE WITH N.E.C. AND MUNICIPAL CODES AND ORDINANCES. PROVIDE A GREEN GROUNDING CONDUCTOR IN ALL CONDUITS.

**DEMOLITION**

THE ELECTRICAL CONTRACTOR SHALL REMOVE ALL ELECTRICAL EQUIPMENT, MOUNTING HARDWARE, ASSOCIATED WIRING, AND CONDUIT IN ALL AREAS UNDER GOING DEMOLITION AS A PART OF THIS PROJECT. ELECTRICAL CIRCUITS SHALL BE REMOVED TO SOURCE OF SUPPLY AND SHALL BE LEFT IN A SAFE CONDITION AND ALL WORK SHALL COMPLY WITH THE NATIONAL ELECTRICAL CODE. ELECTRICAL DEMOLITION WORK SHALL BE COORDINATED WITH THE GENERAL CONTRACTOR TO INSURE THE SAFETY OF ALL WORKERS, OTHER PERSONNEL, AND PUBLIC FROM ANY HAZARD WITH RESPECT TO THE ELECTRICAL SYSTEM.

**CONDUCTORS**

ALL WIRE AND CABLE SHALL BE SOFT DRAWN, COPPER WIRE WITH 600 VOLT INSULATION UNLESS NOTED OTHERWISE ON THE DRAWINGS. WIRE AND CABLE SHALL BE TYPE THWN/THHN UNLESS OTHERWISE NOTED.

NO WIRES SMALLER THAN #12 SHALL BE USED, UNLESS NOTED OTHERWISE. ALL WIRING SHALL BE COLOR CODED PER THE N.E.C.

**RECEPTACLES**

DEVICES SHALL BE AS FOLLOWS:

GENERAL CONVENIENCE RECEPTACLES SHALL BE IVORY, 20 AMPERE, 125 VOLT, 3-WIRE GROUNDING TYPE, DUPLEX SPECIFICATION GRADE RECEPTACLES WITH U-SHAPED SLOT FOR GROUNDING PRONG.

PROVIDE GROUND FAULT CIRCUIT INTERRUPTER (GFCI) TYPE DUPLEX RECEPTACLES WHERE NOTED ON DRAWINGS.

**DEVICE PLATES**

DEVICE PLATES SHALL BE WEATHERPROOF DIE-CAST ALUMINUM GASKET COVERS AS REQUIRED BY THE N.E.C.

**PANELBOARDS**

ALL PANELBOARDS SHALL BE MANUFACTURED BY SQUARE "D" OR EQUAL. ALL PANELS SHALL BY DEAD FRONT WITH CIRCUIT BREAKERS IN ACCORDANCE WITH SCHEDULES AND NOTATIONS SHOWN ON THE DRAWINGS. LOAD CENTER PANELS ARE NOT ACCEPTABLE.

ALL CABINETS, WIRING GUTTERS, ETC., SHALL BE IN STRICT ACCORDANCE WITH THE STANDARD PRACTICE OF THE NEMA AND THE NATIONAL ELECTRIC CODE. ALL BRANCH CIRCUIT WIRING IN PANELS SHALL BE NEATLY RACKED IN THE WIRING GUTTERS.

ALL CIRCUIT BREAKERS SHALL HAVE A QUICK-MAKE AND BREAK MECHANISM WITH NON-WELDING SILVER ALLOY CONTACTS. AUTOMATIC TRIPPING SHALL BE CLEARLY INDICATED BY THE HANDLE. THE FACE OF EACH BREAKER SHALL BE COMMON TYPE AND EXTERNAL HANDLE TIES WILL NOT BE PERMITTED. ALL CIRCUIT BREAKERS SHALL BE BOLT ON TYPE. BRANCH CIRCUIT BREAKERS SHALL HAVE A MINIMUM INTERRUPTING CAPACITY OF 22,000 AMPS RMS, UNLESS NOTED OTHERWISE. NO HALF SIZE OR TANDEM BREAKERS WILL BE ACCEPTED. PROVIDE CIRCUIT BREAKERS UL LISTED FOR LIGHTING BRANCH CIRCUITS. WHEN PANELS ARE SCHEDULED TO HAVE SPARES, THE BREAKER SHALL BE INSTALLED IN THE PANELBOARD.

ALL PANELBOARDS AND CIRCUIT BREAKERS SHALL BE FULLY RATED. SERIES RATING IS NOT ACCEPTABLE.

PROVIDE A TYPED WRITTEN CIRCUIT DIRECTORY FOR EACH PANELBOARD.

**SHOP DRAWINGS**

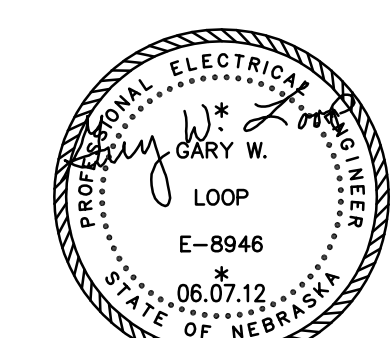
THE CONTRACTOR SHALL SUBMIT FIVE (5) COPIES OF SHOP DRAWINGS TO THE ARCHITECT/ENGINEER FOR APPROVAL. STAMP, DATE, AND SIGN EACH SUBMITTAL TO INDICATE SUBMITTAL IS IN CONFORMANCE WITH REQUIREMENTS OF THE CONTRACT DOCUMENTS. SHOP DRAWINGS SHALL BE SUBMITTED FOR THE FOLLOWING ITEMS:

1. WIRING DEVICES AND COVER PLATES
2. METER SOCKET, PANELBOARDS AND BREAKERS
3. PHOTOCELL

THE ARCHITECT/ENGINEER SHALL BE THE SOLE AND FINAL JUDGE AS TO THE SUITABILITY OF ITEMS SUBSTITUTED FOR THOSE SPECIFIED. THE ENTIRE COST OF ALL CHANGES OF ANY TYPE DUE TO SUBSTITUTIONS FOR MATERIALS SPECIFIED SHALL BE BORNE BY THE CONTRACTOR AT NO EXTRA COST.

UNIVERSITY OF NEBRASKA - LINCOLN  
INNOVATION CAMPUS BUILDING REMOVAL - UNL PROJ. NO. SR460501  
LINCOLN, NEBRASKA

ELECTRICAL DETAILS, SYMBOLS, AND SPECIFICATIONS

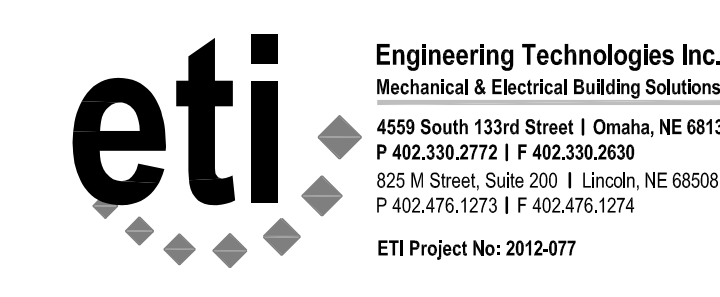


PROJECT NUMBER: 117-009  
DESIGNED: GWL  
DRAWN: ADL  
CHECKED: GWL

1640 "L" STREET, SUITE D  
LINCOLN, NE 68508  
TEL (402) 475-8588  
FAX (402) 477-1956  
www.WLA-consulting.com



SHEET  
E-2



REVISION TRACKING		
DATE	DESCRIPTION	REVISION
05.31.2012	95% SUBMITTAL	
06.07.2012	FINAL SUBMITTAL	0
06.15.2012	ADDENDUM NO. 1	1

Engineering Technologies Inc.  
Mechanical & Electrical Building Solutions  
4559 South 133rd Street | Omaha, NE 68137  
P 402.330.2772 | F 402.330.2630  
825 M Street, Suite 200 | Lincoln, NE 68508  
P 402.476.1273 | F 402.476.1274  
ETI Project No: 2012-077