

DATE: May 17, 2012

FROM: The Schemmer Associates
1044 North 115th Street
Omaha, Nebraska 68154-4436
Phone: (402) 493-4800
Telefax: (402) 493-7951

TO: Prospective Bidders and Plan Holders

RE: Addendum No. 1 to the Bidding Documents for:

Good Samaritan Society
Millard 400 Wing Renovation
Millard, Nebraska
Schemmer Project No. 06107.001

This addendum is issued by the Architect to the Contractor. This Addendum shall be made a part of the Contract Documents. Acknowledge receipt of this Addendum shall be provided on the Bid Form. Failure to do so may subject Bidder to disqualification.

Prior approval of manufacturers is a general approval only for bidding purposes. Final approval of the products is contingent upon the submittal of product data and/or shop drawings which will have to meet the specific design requirements and the specifications.

This addendum consists of (3) pages of written addendum items including this cover.

THE SCHEMMER ASSOCIATES INC.
ARCHITECTS | ENGINEERS | PLANNER

PROJECT MANUAL

ARCHITECTURAL

Item No. SA-1

The manufacturer listed below shall be added to the plans and is listed for the purposes of bidding only. This is not a pre-approval. Final approval of the product is contingent upon the submittal of product data and/or shop drawings, which have met the specific design requirements as scheduled and/or specified for this project.

<u>Section</u>	<u>Item</u>	<u>Manufacturer</u>
084229.33	Swinging Automatic Entrances	Nabco Gyrotech

MECHANICAL

Item No. SM-1

The manufacturers listed below shall be added to the plans and are listed for the purposes of bidding only. These are not pre-approvals. Final approval of the products is contingent upon the submittal of product data and/or shop drawings, which have met the specific design requirements as scheduled and/or specified for this project.

<u>Section</u>	<u>Item</u>	<u>Manufacturer</u>
232113	Balancing Valves	Pro Hydronic Specialties
232113	Automatic Flow Control Valves	Pro Hydronic Specialties
223400	Domestic-Water Compression Tanks	Wilkins

Item No. SM-2

Add specification section 224300 – Healthcare Plumbing Fixtures.

ELECTRICAL

Item No. SE-1

The luminaire manufacturers listed for the luminaire types below shall be added to the plans and specifications and are listed for the purposes of bidding only. These are not pre-approvals. Final approval of the products is contingent upon the submittal of product data and/or shop drawings, which have met the specific design requirements as scheduled and/or specified for this project.

<u>Luminaire Type</u>	<u>Manufacturer</u>
A1, A2, A3, A4, A5, A6	Metalux
B1, B2	LaMar
C1, C2, C4	Atlantic
C3	RSA
P	Kichler
W1	McGraw-Edison
W1 (Emergency pack), X1, X2, X3	Sure-Lites

DRAWINGS

MECHANICAL

Item No. DM-1, Sheet M0-01:

Referenced Demolition Note #9 shall read: "Disconnect and remove ceiling exhaust fan, discharge duct, and associated controls. Patch roof opening watertight and patch ceiling and wall openings to match existing."

Item No. DM-2, Sheet M1-01:

Add Referenced Mechanical Note #18 as follows: "Modify existing ductwork as necessary to reinstall existing diffuser and grille in new lay-in ceiling tile. Maintain supply and return duct connections to existing air handling system. Field verify duct routing." Apply note 18 to existing ceiling diffuser and grille in A-140 Remodeled Med Room.

Item No. DM-3, Sheet M1-01:

Refer to supplemental drawing SDM-1 for return grille G-4 added in Corridor A-111 and modified return duct sizes from this grille to ERV-1 on roof.

Item No. DM-4, Sheet M1-01:

Reference Mechanical Note #4 shall read: "Existing console fan coil unit and associated controls shall remain. Verify proper unit operation."

Item No. DM-5, Sheet M2-01:

Refer to supplemental drawing SDM-2 for updates to rooftop unit ERV-1 schedule.

Item No. DM-6, Sheet P1-01 and P2-01:

Clarification:

Transfer Spa is Owner provided and Contractor Installed.

Item No. DM-7, Sheet P2-01:

See attached drawing SDM-3 for gas piping riser diagram and sizing. Gas piping sizing on SDM-3 supersedes gas pipe sizing shown on previous drawings.

Item No. DM-8, Sheet P2-01:

See attached drawing SDM-4 for clarification on domestic water piping at typical units.

ELECTRICAL

Item No. DE-1, Sheet E3-01:

On Equipment Electrical Schedule, make the following changes to the information for ERV-1 : FLA 35.2, Disconnect Size 60/3, Fuse Size 60, Feeder Size 3#6, 1#10G, 1"C.

Item No. DE-2, Sheet E3-01:

On Power Riser Diagram, add Referenced Keynote Marker #2 at Existing MDP, and add note #2 to read "PROVIDE NEW 60/3 CIRCUIT BREAKER IN EXISTING GE SPECTRA SERIES 'MDP' TO SERVE NEW ERV-1. MATCH EXISTING PANEL BREAKERS AIC RATING."

SECTION 224300**HEALTHCARE PLUMBING FIXTURES****PART 1 - GENERAL**

1.1 SUMMARY

- A. Section includes the following healthcare fixtures and specialties:
 - 1. Bedpan washers.
 - 2. Clinic sinks.

- B. Related Requirements:
 - 1. Section 224213.13 "Commercial Water Closets" for conventional water closets, flushometer valves, carriers, and seats for use healthcare facilities, but not requiring special healthcare fixture attributes.
 - 2. Section 224213.16 "Commercial Urinals" for urinals for use in healthcare facilities.
 - 3. Section 224216.13 "Commercial Lavatories" for lavatories for use in healthcare facilities, but not requiring special healthcare fixture attributes.
 - 4. Section 224216.16 "Commercial Sinks" for sinks for use in healthcare facilities, but not requiring special healthcare fixture attributes.
 - 5. Section 224223 "Commercial Showers, Receptors, and Basins" for showers for use in healthcare facilities, but not requiring special healthcare fixture attributes.

1.2 ACTION SUBMITTALS

- A. Product Data: For each type of product.
- B. Shop Drawings: Include diagrams for power, signal, and control wiring.

1.3 CLOSEOUT SUBMITTALS

- A. Operation and Maintenance Data: For plumbing fixtures and faucets to include in operation and maintenance manuals.
 - 1. In addition to items specified in Section 017823 "Operation and Maintenance Data," include the following:
 - a. Servicing and adjustments of flushometer valves and bedpan washer/sanitizers.

PART 2 - PRODUCTS

2.1 FLUSHOMETER VALVES

- A. Lever-Handle, Diaphragm Flushometer Valves.
 - 1. Manufacturers: Subject to compliance with requirements, provide products by one of the following:
 - a. Delany Flush Valves.
 - b. Sloan Valve Company.
 - c. Zurn Industries, LLC; Commercial Brass and Fixtures.

2. Standard: ASSE 1037.
3. Minimum Pressure Rating: 125 psig.
4. Features: Integral check stop, backflow-prevention device, and outlet-tube-mounted bedpan washer.
5. Material: Brass body with corrosion-resistant components.
6. Exposed Flushometer-Valve Finish: Chrome plated.
7. Style: Exposed.
8. Minimum Inlet: NPS 1.
9. Minimum Outlet: NPS 1-1/4, extended length.

2.2 BEDPAN WASHERS

A. Bedpan Washers: Wall mounted, compact.

1. Manufacturers: Subject to compliance with requirements, provide products by one of the following:
 - a. American Standard America.
 - b. Chicago Faucets.
 - c. Kohler Co.
 - d. Speakman Company.
 - e. T & S Brass and Bronze Works, Inc.
 - f. Whitehall Manufacturing; a division of Acorn Engineering Company.
2. Standard: ASME A112.18.1/CSA B125.1.
3. Hose Assembly: 48-inch- long rubber or vinyl hose with self-closing, hand-held spray nozzle, wall bracket, and hook.
4. Vacuum Breaker: ASSE 1001, atmospheric, wall mounted.
5. Shutoff Valve: Wall-mounted, supply stop upstream of vacuum breaker.
6. Connecting Piping: Concealed.
7. Finish: Polished chrome-plated finish on exposed metal parts.

2.3 CLINIC SINKS

A. Clinic Sinks: Floor mounted.

1. Manufacturers: Subject to compliance with requirements, provide products by one of the following:
 - a. American Standard America.
 - b. Crane Plumbing, L.L.C.
 - c. Kohler Co.
 - d. Zurn Industries, LLC; Commercial Brass and Fixtures.
2. Fixture: Bottom-outlet, vitreous-china, siphon-jet, flushing-rim, service sink.
 - a. Standard: ASME A112.19.2/CSA B45.1.
 - b. Color: White.
 - c. Rim Guards: Stainless steel on front.
3. Sink Base: 10 inches high; cast terrazzo if required.
4. Supply Fittings: Comply with requirements in "Supply Fittings" Article.

2.4 SUPPLY FITTINGS

- A. NSF Standard: Comply with NSF 61, "Drinking Water System Components - Health Effects," for supply-fitting materials that will be in contact with potable water.
- B. Standard: ASME A112.18.1/CSA B125.1.
- C. Supply Piping: Chrome-plated brass pipe or chrome-plated copper tube matching water-supply piping size. Include chrome-plated brass or stainless-steel wall flange.
- D. Supply Stops: Chrome-plated brass, one-quarter-turn, ball-type or compression valve with inlet connection matching supply piping.
- E. Operation: Loose key or Wheel handle.

2.5 WASTE FITTINGS

- A. Standard: ASME A112.18.2/CSA B125.2.

2.6 GROUT

- A. Standard: ASTM C 1107/C 1107M, Grade B, post-hardening and volume-adjusting, dry, hydraulic-cement grout.
- B. Characteristics: Nonshrink; recommended for interior and exterior applications.
- C. Design Mix: 5000-psi, 28-day compressive strength.
- D. Packaging: Premixed and factory packaged.

PART 3 - EXECUTION**3.1 INSTALLATION**

- A. Install healthcare plumbing fixtures level and plumb according to roughing-in drawings.
- B. Install supports, affixed to building substrate, for wall-mounted fixtures.
 - 1. Use carrier supports with waste fitting and seal for back-outlet fixtures.
 - 2. Use carrier supports without waste fitting for fixtures with tubular waste piping.
 - 3. Use chair-type carrier supports with rectangular steel uprights for accessible fixtures.
- C. Install floor-mounted healthcare water closets on bowl-to-drain, connecting fitting attachments to piping or building substrate.
- D. Install counter-mounted fixtures in and attached to casework.
- E. Install water-supply piping with stop on each supply to each fixture to be connected to water-distribution piping. Attach supplies to supports or substrate within pipe spaces behind fixtures. Install stops in locations where they can be easily reached for operation.
 - 1. Exception: Use ball, gate, or globe valve if supply stops are not specified with fixture. Comply with valve requirements specified in Section 220523 "General-Duty Valves for Plumbing Piping."

- F. Install flushometer valves on healthcare water closets.
- G. Install flushometer valves for accessible healthcare water closets, with lever handle mounted on wide side of compartment.
- H. Install toilet seats on healthcare water closets.
- I. Install faucet flow-control fittings with specified flow rates and patterns in faucet spouts, if faucets are not available with required rates and patterns. Include adapters if required.
- J. Install laminar-flow, faucet-spout fittings in faucet spouts where laminar-flow fittings are specified.
- K. Install shower flow-control fittings with specified maximum flow rates in shower arms.
- L. Install traps on fixture outlets.
 - 1. Exception: Omit trap on fixtures with integral traps.
- M. Set healthcare showers in leveling bed of cement grout.
- N. Install protective shielding pipe covers and enclosures on exposed supplies and waste piping of accessible sinks. Comply with requirements in Section 220719 "Plumbing Piping Insulation."
- O. Seal joints between healthcare plumbing fixtures, counters, floors, and walls using sanitary-type, one-part, mildew-resistant silicone sealant. Match sealant color to fixture color. Comply with sealant requirements specified in Section 079200 "Joint Sealants."
- P. Install wall flanges or escutcheons at piping wall penetrations in exposed, finished locations. Use deep-pattern escutcheons if required to conceal protruding fittings. Comply with escutcheon requirements specified in Section 220518 "Escutcheons for Plumbing Piping."
- Q. Connect fixtures with water supplies, stops, and risers, and with traps, soil, waste, and vent piping. Use size fittings required to match fixtures.
- R. Comply with requirements for water piping specified in Section 221116 "Domestic Water Piping."
- S. Comply with requirements for soil and waste drainage piping and vent piping specified in Section 221316 "Sanitary Waste and Vent Piping."
- T. Comply with requirements for atmospheric vent piping specified in Section 221316 "Sanitary Waste and Vent Piping."
- U. Install protective shielding pipe covers and enclosures on exposed supplies and waste piping of accessible sinks. Comply with requirements in Section 220719 "Plumbing Piping Insulation."

3.2 ADJUSTING

- A. Operate and adjust faucets and controls. Replace damaged and malfunctioning healthcare plumbing fixtures, fittings, and controls.
- B. Adjust water pressure at faucets and flushometer valves to produce proper flow.
- C. Install fresh batteries in battery-powered, electronic-sensor mechanisms.

3.3 CLEANING AND PROTECTION

- A. After installing healthcare plumbing fixtures, inspect and repair damaged finishes.
- B. Clean healthcare plumbing fixtures, faucets, and other fittings with manufacturers' recommended cleaning methods and materials.
- C. Provide protective covering for installed fixtures and fittings.
- D. Do not allow use of healthcare plumbing fixtures for temporary facilities unless approved in writing by Owner.

END OF SECTION

SCHEMMER

ARCHITECTS | ENGINEERS | PLANNERS

PROJECT: GOOD SAMARITAN SOCIETY

JOB NO: 06107.001

SUPPLEMENTAL DRAWING

DATE: 05/14/12

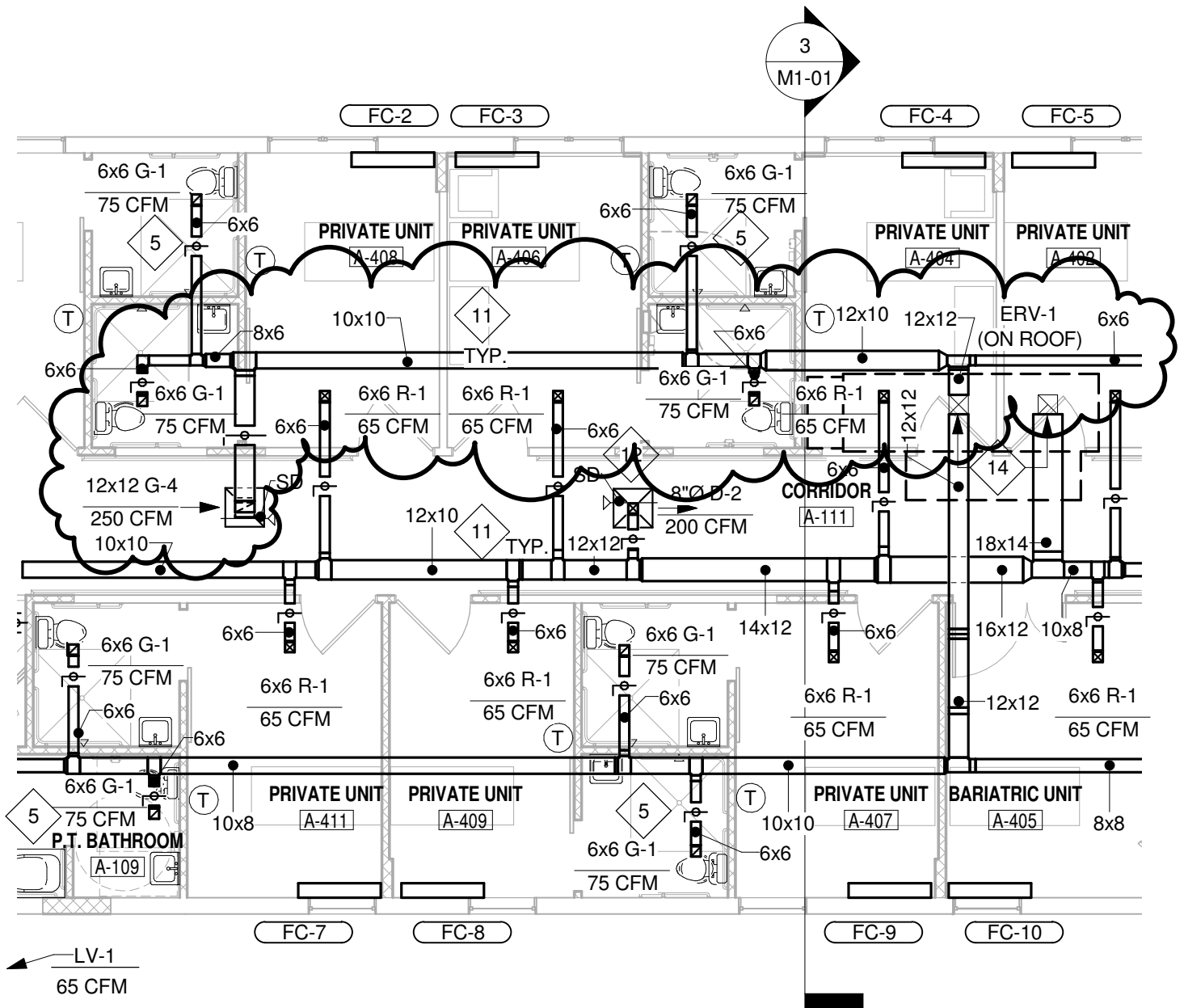
DRAWN: JRH

SCALE: 1/8" = 1'-0"

SHEET NO: SDM-1

SHEET TITLE: HVAC ENLARGEMENT

REF: M1-01



C:\Documents and Settings\rosal\Desktop\Flexit local file\GSSM-06107001-CENTRAL-FILE-MECH_jrhper.rvt 5/15/2012 11:18:09 AM

SCHEMMER

ARCHITECTS | ENGINEERS | PLANNERS

PROJECT: GOOD SAMARITAN SOCIETY

JOB NO: 06107.001

SUPPLEMENTAL DRAWING

DATE: 05/14/12

DRAWN: JRH

SCALE:

SHEET NO: SDM-2

SHEET TITLE: ROOFTOP UNIT SCHEDULE

REF: M2-01

ROOFTOP UNIT SCHEDULE

MARK	SERVES	SUPPLY FAN DATA					RETURN FAN DATA					COOLING DATA					HEATING DATA				SUPPLY FAN MOTOR DATA				RETURN FAN MOTOR DATA				ELECTRICAL DATA		MANUFACTURER AND MODEL NUMBER	REMARKS						
		CFM	TOT SP IN WC	EXT SP IN WC	RPM	DIA IN	TYPE	CFM	TOT SP IN WC	EXT SP IN WC	RPM	DIA IN	TYPE	EAT DB/WB (°F)	COIL LAT DB/WB (°F)	TOTAL CAP (MBH)	SENSIBLE CAP (MBH)	EER @ DESIGN CONDITIONS	EER @ ARI RATING CONDITIONS	REFRIG.	EAT DB (°F)	LAT DB (°F)	NAT GAS INPUT (MBH)	NAT GAS OUTPUT (MBH)	RPM	HP	VOLT	PH	HZ	RPM			HP	VOLT	PH	HZ	MCA	MOP
ERV-1	400 WING	1590	3.27	1.3	2289	14	DIRECT-DRIVE BACKWARD-INCLINED PLENUM FAN	1460	1.91	1.3	1787	14	DIRECT-DRIVE BACKWARD-INCLINED PLENUM FAN	79.7/67.2	55.3/54.5	63.4	42.2	9.1	11.7	R-410A	52.5	98.9	100	80	2289	1.5	208	3	60	1787	0.75	208	3	60	40.3	60.0	VALENT VPRE-110-5C-10J-A-1CA	1,2,3,4,5,6

- SEE ENERGY RECOVERY WHEEL SCHEDULE FOR PERFORMANCE OF ENERGY RECOVERY WHEEL INTEGRAL TO ROOFTOP UNIT.
- SUPPLY AND RETURN FANS WITH FACTORY PROVIDED VFDS.
- PROVIDE MERV 13 FILTERS ON SUPPLY AIR
- PROVIDE UNIT WITH SINGLE POINT WIRING.
- PROVIDE MANUFACTURER'S ROOF CURB COMPATIBLE WITH PITCHED ROOF WITH UNIT.
- COOLING DATA BASED ON 95°F db/78°F wb O.A. CONDITIONS AND HEATING DATA BASED ON -10°F O.A. CONDITIONS.

SCHEMMER

ARCHITECTS | ENGINEERS | PLANNERS

PROJECT: GOOD SAMARITAN SOCIETY

JOB NO: 06107.001

SUPPLEMENTAL DRAWING

DATE: 05/14/12

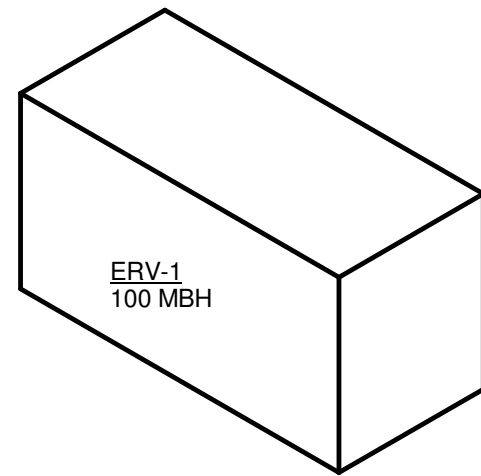
DRAWN: LRW

SCALE: NO SCALE

SHEET NO: SDM-3

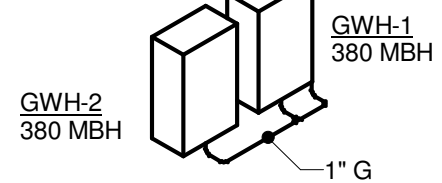
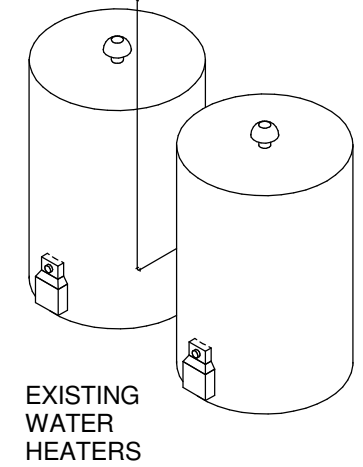
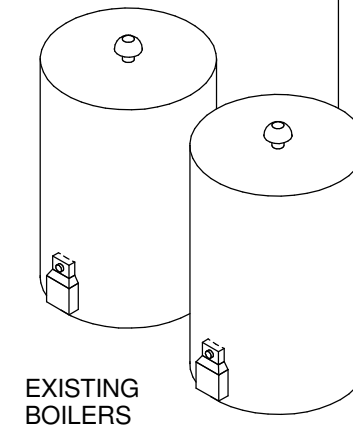
SHEET TITLE: GAS RISER DIAGRAM

REF: P2-01



INSTALL 1" GAS PIPING FROM
ERV-1 TO EXISTING
1" G ON ROOF. EXTEND
PIPING AS REQUIRED.

1 1/2" GAS
PIPING IN
ATTIC



SCHEMMER

ARCHITECTS | ENGINEERS | PLANNERS

PROJECT: GOOD SAMARITAN SOCIETY

JOB NO: 06107.001

SUPPLEMENTAL DRAWING

DATE: 05/15/12

DRAWN: LRW

SCALE: NO SCALE

SHEET NO: SDM-4

SHEET TITLE: TYPICAL UNIT DOMESTIC WATER RISER

REF: P2-01

