

DATE: May 21, 2012

FROM: The Schemmer Associates
1044 North 115th Street
Omaha, Nebraska 68154-4436
Phone: (402) 493-4800
Telefax: (402) 493-7951

TO: Prospective Bidders and Plan Holders

RE: Addendum No. 2 to the Bidding Documents for:

Good Samaritan Society
Millard 400 Wing Renovation
Millard, Nebraska
Schemmer Project No. 06107.001

This addendum is issued by the Architect to the Contractor. This Addendum shall be made a part of the Contract Documents. Acknowledge receipt of this Addendum shall be provided on the Bid Form. Failure to do so may subject Bidder to disqualification.

Prior approval of manufacturers is a general approval only for bidding purposes. Final approval of the products is contingent upon the submittal of product data and/or shop drawings which will have to meet the specific design requirements and the specifications.

This addendum consists of (2) pages of written addendum items including this cover, (2) drawings, and (1) specification section.

THE SCHEMMER ASSOCIATES INC.
ARCHITECTS | ENGINEERS | PLANNER

PROJECT MANUAL

ARCHITECTURAL

Item No. SA-1

Add specification section 099990-2 – FINISH SCHEDULE - ATTACHEMENT

Item No. SA-2

Revise specification section 012100 – Part 3 – Execution – 3.1 Schedule of Allowances

Add:

B. Allowance No. 2: \$30/SY for carpet, \$1.50/LF for vinyl base, \$25/SY sheet vinyl and vinyl plank and \$8/SF for porcelain tile.

DRAWINGS

Interior Design

Item No. DI-1, Sheet ID-1:

Add ID-1 to project scope.

Item No. DI-1, Sheet ID-2:

Add ID-2 to project scope.



FINISH SCHEDULE

**MILLARD GOOD SAMARITAN – OMAHA, NE - RENOVATION
POST ACCUTE WING**

Designer:
Name
LEVORSON/BRU
NELL

Date: **5/21/2012**

Rev:

Rooms		Finishes																			
NO.	ROOM NAME	Floor	Base	Trim	CEILING		CASEWORK		ACCENT		North Wall		East Wall		South Wall		West Wall		Special Notes		
					Finish	Height	Top	Cabinet	Finish	Location	Upper	Lower	Upper	Lower	Upper	Lower	Upper	Lower			
A-101	VESTIBULE	PT1/ MAT1	PT2/ PT3		P6							P1		P1		P1		P1		NOTES 1	
A-102	HEARTH ROOM	C2/C3	MVB 1		ACT							---		---		W1		W1			
A-103	DINING/ACTIVITY	LVP1	MVB 1		ACT		PL1	WD				P2		---		---		P2		NOTE 6	
A-104	NURSES STATION	C1	MVB 1		ACT		PL1	WD				P1		P1		---		P1		NOTE 6	
A-105	CLOSET	EXIST	EXIST		EXIST							EXIST		EXIST		EXIST		EXIST			
A-106	SPA	PT4	PT2		P6							PT1		*SEE FINISH PLAN		EP1	PT1	PT1		NOTE 2	
A-107	PHYSICAL THERAPY	*LVP1 /C2 NOTE 6	MVB 1		ACT/ P6							P1		P1		P1		P3		*SEE FINISH PLAN	
A-108	STORAGE	LVP1	MVB 1		P6							P1		P1		P1		P1			
A-109	PHYSICAL THERAPY TOILET	PT4	PT2		P6							P1	PT1	P1	PT1	P1	PT1	P1	PT1	NOTE 3 PT1: 4' UP	
A-110	SOLARIUM	LVP1	MVB 1		P6							P3		P3		P3		---		*SEE PLAN	
A-111	CORRIDOR	C1	VB1		ACT				PR ST1	NOTE 4	W1	P1	W1	P1	W1	P1	W1	P1	W1	P1	NOTE 8.
A-112	SOILED UTILITY	SV1	*SV1		P6							EP1		EP1		EP1		EP1		*NOTE 5	
A-140	REMODELED MED RM.	LVP1	MVB 1		P6		PL1	WD				P1		P1		P1		P1			
A-141	NURSES STATION	LVP1	MVB 1		P6		PL1	WD				P1		P1		P1		P1			
A-142	CHARTS	LVP1	MVB 1		P6		PL1	WD				P1		P1		P1		P1			
A-143	ACTIVITY STORAGE STORAGE	SV1 EXIST	SV1 EXIST		P6 EXIST							P1 EXIST		P1 EXIST		P1 EXIST		P1 EXIST			



FINISH SCHEDULE

**MILLARD GOOD SAMARITAN – OMAHA, NE - RENOVATION
POST ACCUTE WING**

Designer:
Name
LEVORSON/BRU
NELL

Date: **5/21/2012**

Rev:

Rooms		Finishes																	
NO.	ROOM NAME	Floor	Base	Trim	CEILING		CASEWORK		ACCENT		North Wall		East Wall		South Wall		West Wall		Special Notes
					Finish	Height	Top	Cabinet	Finish	Location	Upper	Lower	Upper	Lower	Upper	Lower	Upper	Lower	
A-150	STAFF BREAKROOM	EXIST	EXIST		EXIST PAINT							EXIST	EXIST	EXIST	EXIST				
A-153	SOILED UTILITY	EXIST	EXIST		EXIST PAINT							EXIST	EXIST	EXIST	EXIST				
	RESIDENT ROOMS SCHEME A	C4	MVB 1		P6							P4	P4	P4	P4				NOTE 7: P3
	RMS: A120, A122, A124, A130, A132, A134																		
	RESIDENT ROOMS SCHEME B	LVP1	MVB 1		P6							P4	P4	P4	P4				NOTE 7: P5
	RMS: A121, A123, A125, A131, A133, A135																		
	RESIDENT TOIL. ROOMS	PT4	PT2		P6							P4	P4	P4	P4				

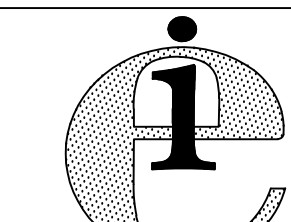


FINISH SCHEDULE

MILLARD GOOD SAMARITAN – OMAHA, NE - RENOVATION POST ACCUTE WING	Designer: Name LEVORSON/BR UNELL	Date: 5/21/2012	Rev:
---	---	------------------------	------

MATERIALS

CARPET:	PORCELAIN TILE:
C1: LEES –PATTERN: WINTER LATTICE (CARPET TILE) – #GT088, 24” X 24” INSTALL MONOLITHIC - COLOR: 331 THYME, 22 OZ, DURACOLOR/ANTRON LEGACY	PT1: RBC – IRON RANGE COLL. IN COLOR: EQCP42 RUST, SIZE: 12” X 12” GLAZED PORCELAIN
C2: LEES –PATTERN: SUMMER SEASONS (BROADLOOM) - #GL084, 12’ WIDTH, COLOR: 331 THYME, 22 OZ., DURACOLOR/ANTRON LEGACY, BACKING: UNIBOND RE, REPEAT: 18” X 18.86”	PT2: RBC – BACK BAY– IRON RANGE #EQCP42 RUST, 6” X 6” COVE BASE PT3: RBC – BACK BAY - IRON RANGE COLOR: EQCP42 RUST, SIZE: 3” X 12” BULLNOSE
C3: LEES – PATTERN: COLORBLOX (CARPET TILE) -#GT081, COLOR: 301 ALOE, DURACOLOR ANTRON LEGACY, 24” X 24” - NOTE: CUT TILES TO FORM 9” CARPET BORDER – SEE PLAN	PT4: RBC – BACK BAY - IRON RANGE #EQCP42 RUST, 6” X 6” GROUT: HYDROMAT #H150 SUMMER WHEAT - STANDARD
C4: RESIDENT ROOM CARPET: SEE PLAN FOR ROOMS GETTING CARPET LEES – PATTERN: GROUNDWORK (CARPET TILE) #D7943, COLOR: OASIS #211, DURACOLOR ANTRON LEGACY, 24” X 24” INSTALL MONOLITHIC	WALL PROTECTION: IPC –INPRO CORPORATION BUMPER GUARDS: STYLE: 500, COLOR: WHEATFIELD 0285, 3” HT. – NOTE: 502 END CAPS NEEDED CG1: CORNER GUARDS: STYLE: 134, COLOR: WHEATFIELD 0285, 3” X 4’ HT.
LUXURY VINYL PLANKS:	
LVP1: SHANNON SALES – DECORIA – DW2350, 7.2”WIDE X 37.4” LENGTH 0.12” GAUGE	PLASTIC LAMINATE: PL1: NEVAMAR #PDG002T – PAINTED WOODLANDS - TEXTURED
VINYL BASE:	
MVB1: JOHNSONITE MILLWORK VINLY BASE – SILHOUETTE #MW-DOK-J FINISH: DOK-DARK OAK	MAT INSET INTO TILE IN VESTIBULE: MAT1 MATS, INC., PATTERN: CALYPSO TILE, COLOR: SABLE BROWN, SIZE: 19-11/16” X 19-11/16”, THICKNESS: 7/16”, BITUMEN BACKING
SHEET VINYL FLOORING:	
SV1: JOHNSONITE – OPTIMA #860 MALT, 6’-6” WIDTH – COVE UP WALL 6” WITH TOP CAP	



**encompass
INTERIORS**
2609 TERRITORIAL ROAD
ST. PAUL, MINNESOTA 55114-1003
TEL (651)646-6600
FAX (651)646-2607
E-MAIL cad@encompassgroup.net

**POST ACUTE WING
FINISH PLAN**

SCALE: 1/8" = 1'-0" &
1/4" = 1'-0"

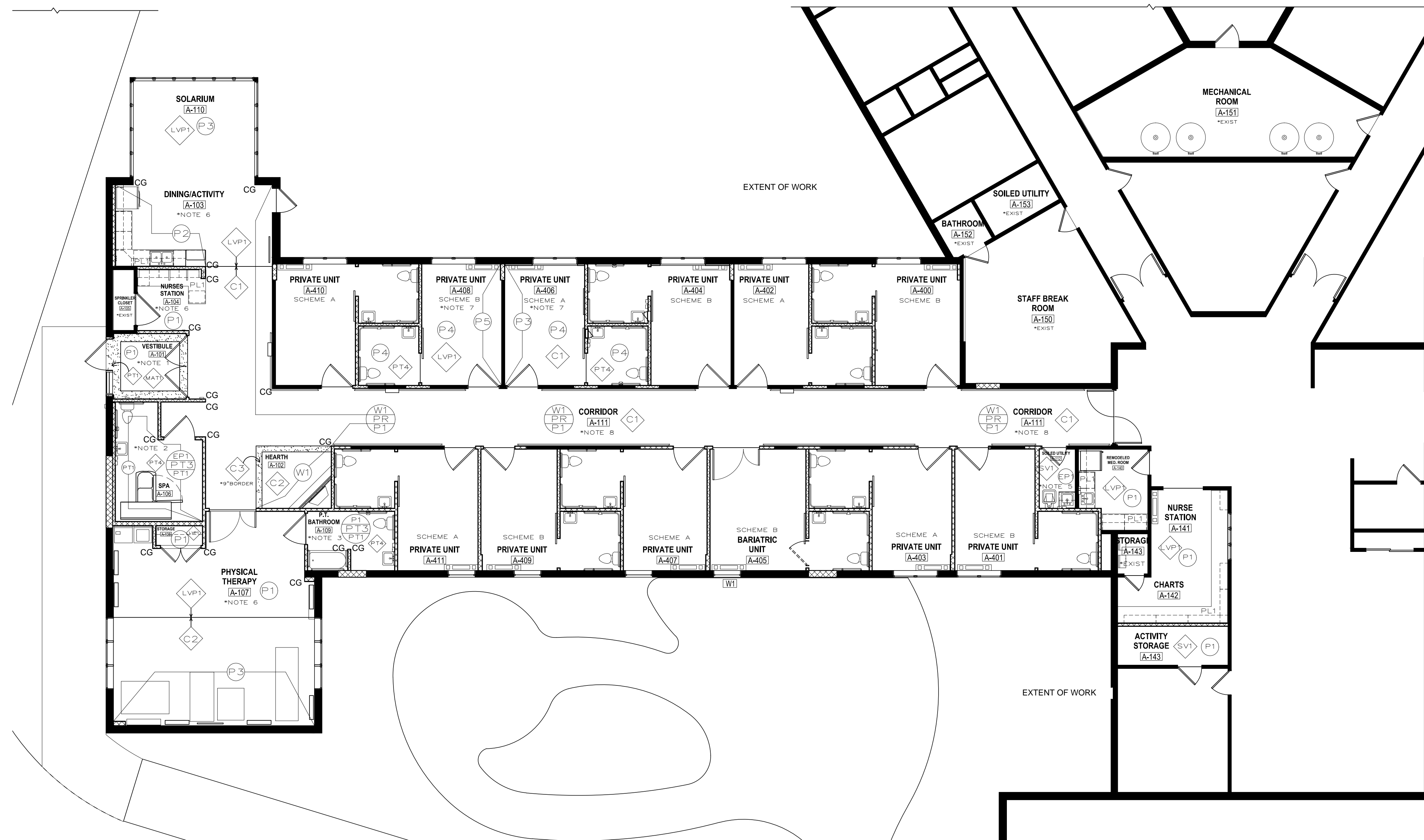
REVISIONS

No.	DATE	DESCRIPTION

MILLARD GOOD SAMARITAN
POST ACUTE RENOVATION
OMAHA, NE

Project Number: _____
Drawn By: ALB
Checked By: JAL
Date: 05.21.2012

ID-1

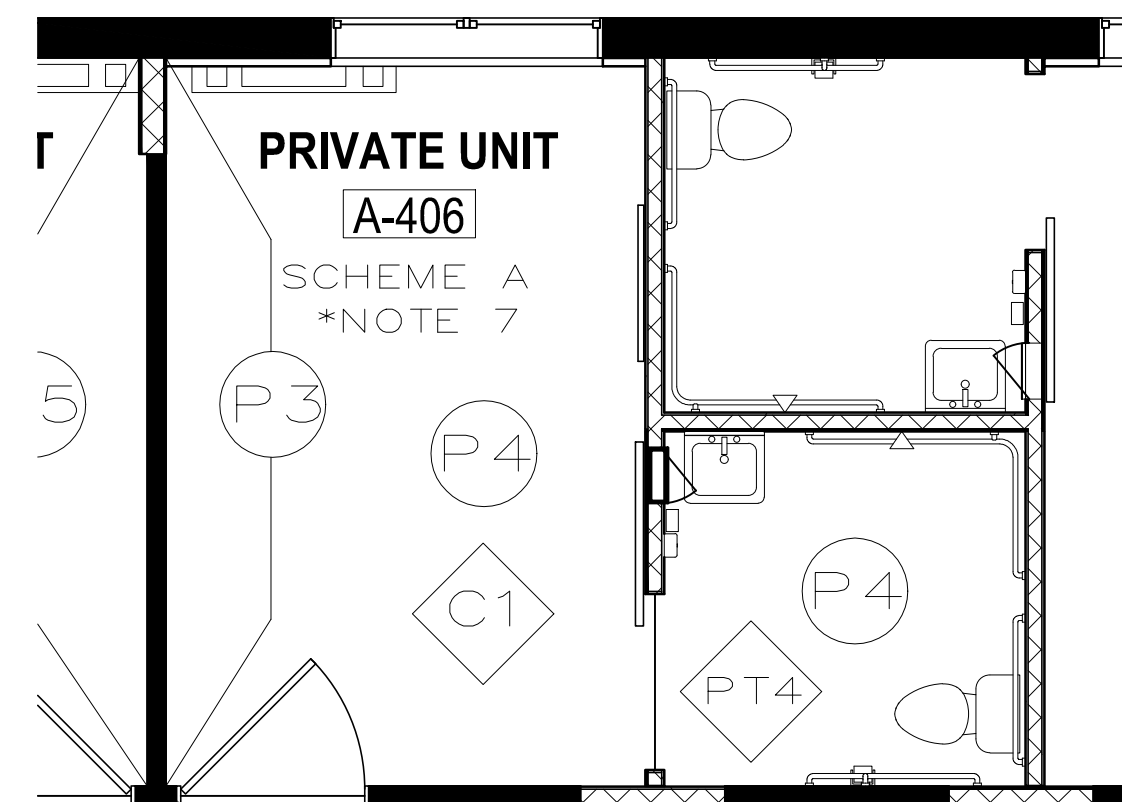


FIRST FLOOR FINISH PLANS
SCALE: 1/8" = 1'-0"

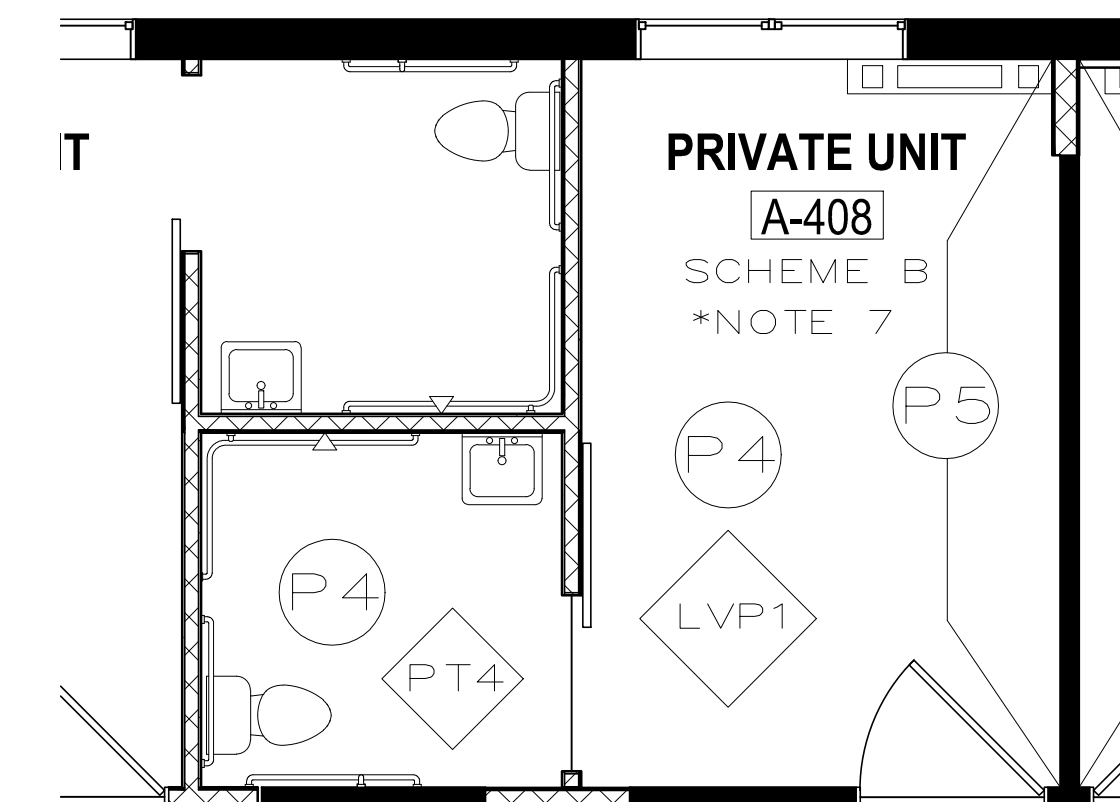
- FINISH SYMBOL DESCRIPTION:**
- | | |
|--------------------------|-----------------------|
| C - CARPET | P - PAINT |
| CG - CORNER GUARD | PL - PLASTIC LAMINATE |
| CR - CHAIR RAIL | PR - PLATE RAIL |
| EP - EPOXY PAINT | PT - PORCELAIN TILE |
| LVP - LUXURY VINYL PLANK | SV - SHEET VINYL |
| MAT - WALK-OFF MAT | W - WALLCOVERING |

FLOORING SPECIFICATIONS

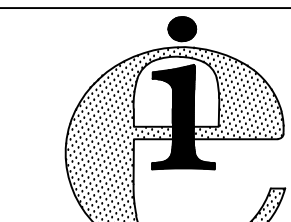
WALL FINISH SPECIFICATIONS



TYPICAL SCHEME A RESIDENT ROOM
SCALE: 1/4" = 1'-0"



TYPICAL SCHEME B RESIDENT ROOM
SCALE: 1/4" = 1'-0"



**encompass
INTERIORS**
2609 TERRITORIAL ROAD
ST. PAUL, MINNESOTA 55114-1003
TEL (651)646-6600
FAX (651)646-2607
E-MAIL cad@encompassgroup.net

**POST ACUTE WING
ELEVATION
FINISHES**

SCALE: 3/8" = 1'-0"

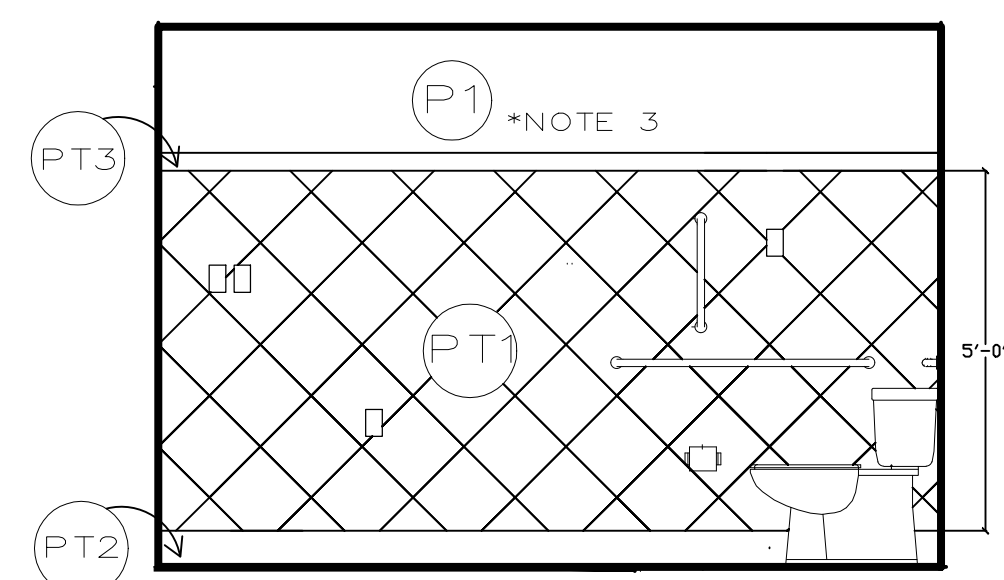
REVISIONS

No.	DATE	DESCRIPTION

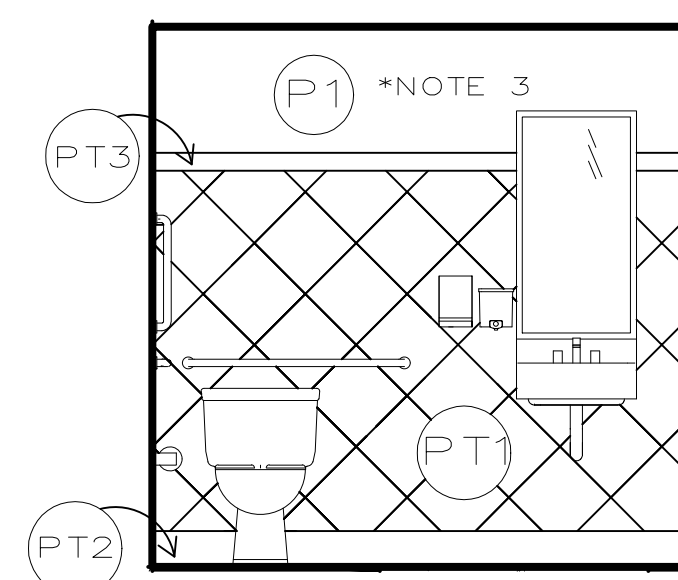
MILLARD GOOD SAMARITAN
POST ACUTE RENOVATION
OMAHA, NE

Project Number: _____
Drawn By: ALB
Checked By: JAL
Date: 5.21.2012

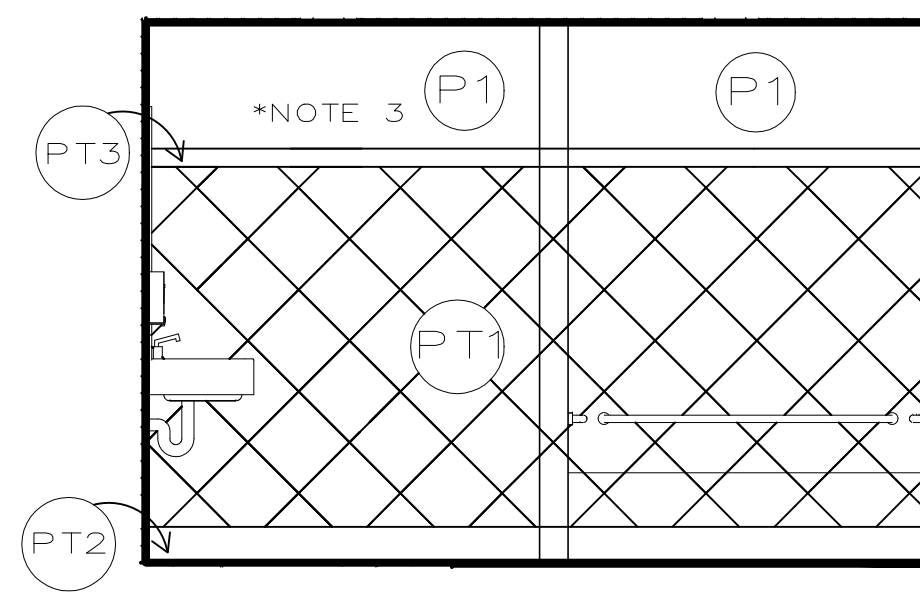
ID-2



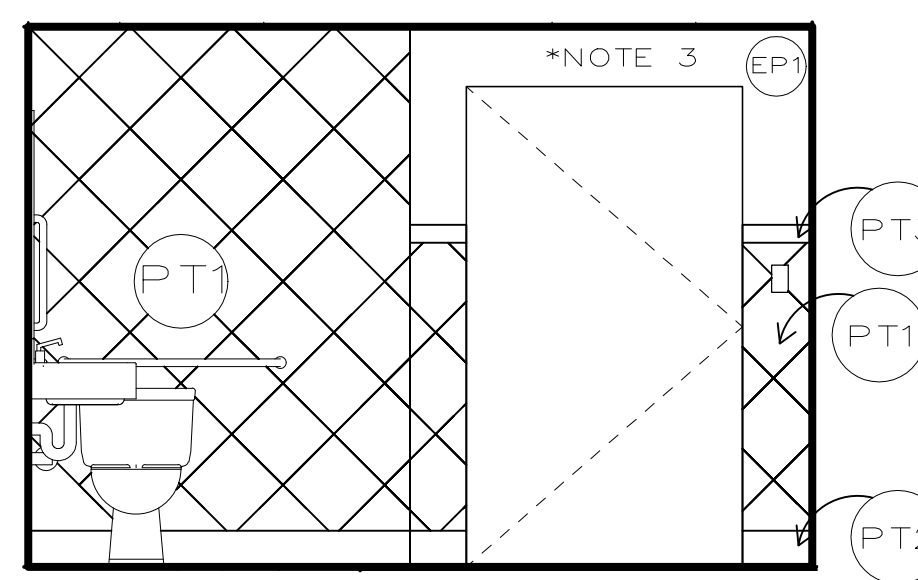
1 P.T. BATHROOM A-109
SCALE: 3/8" = 1'-0"



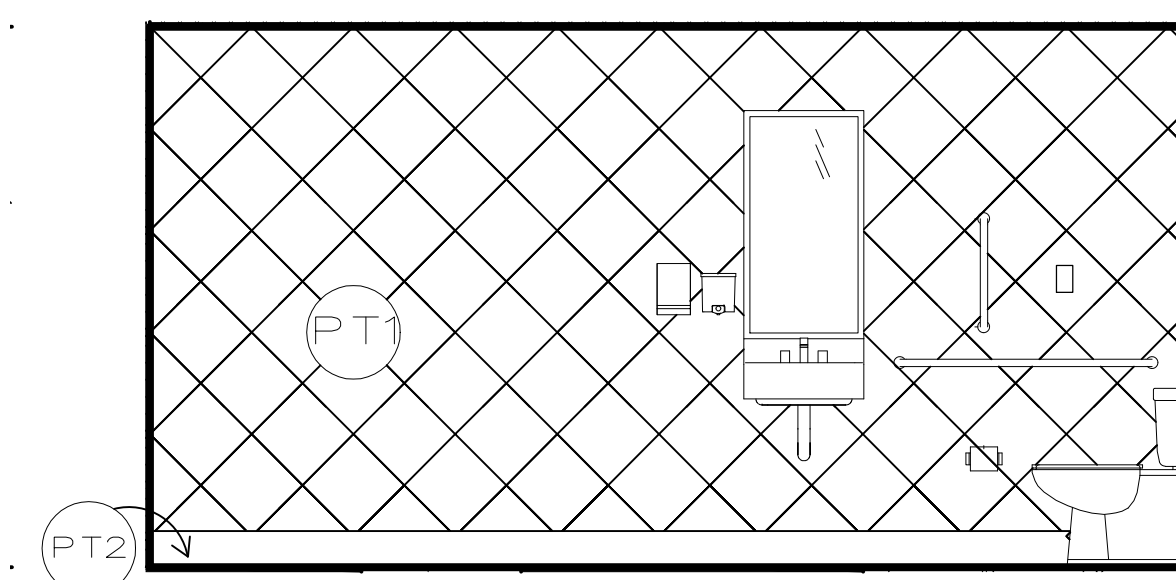
2 P.T. BATHROOM A-109
SCALE: 3/8" = 1'-0"



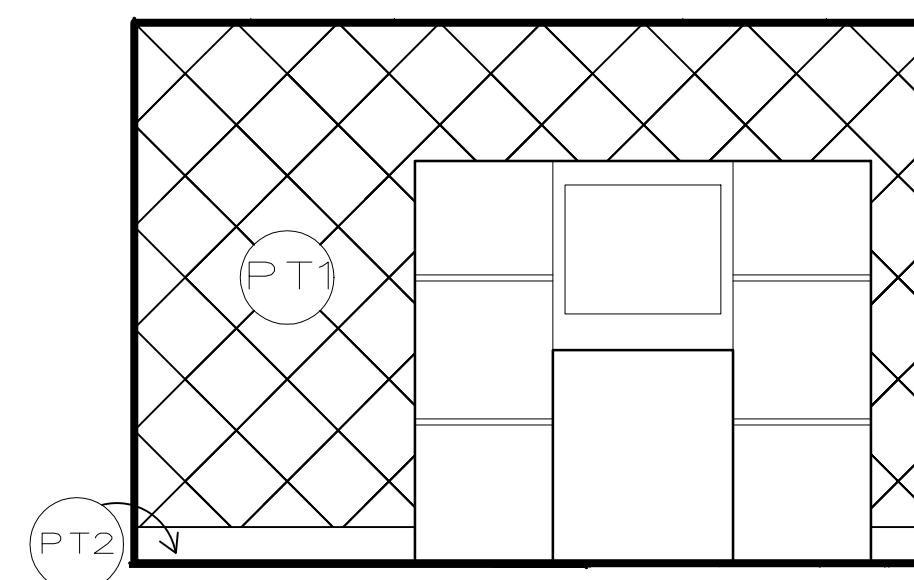
3 P.T. BATHROOM A-109
SCALE: 3/8" = 1'-0"



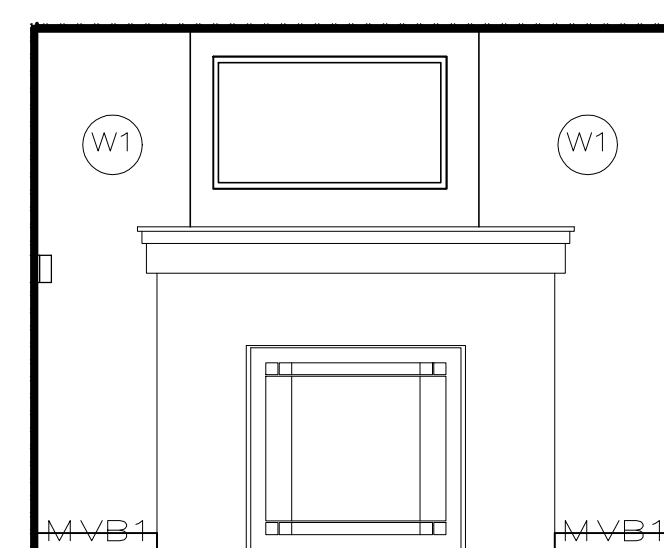
4 SPA A-106
SCALE: 3/8" = 1'-0"



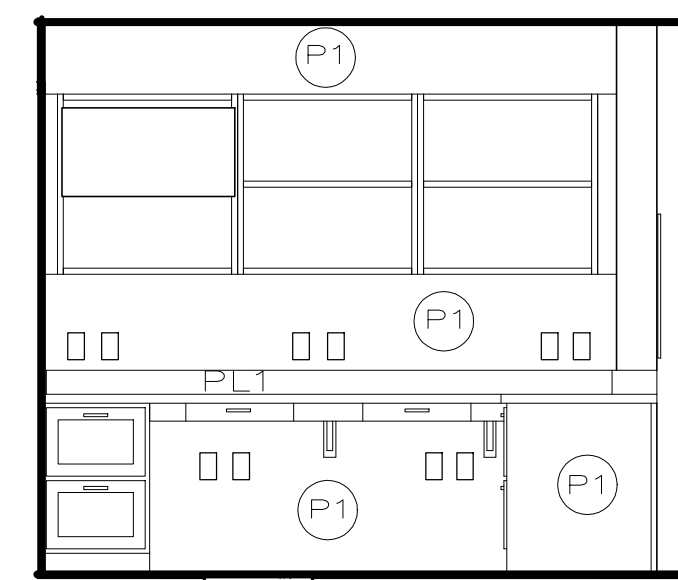
5 SPA A-106
SCALE: 3/8" = 1'-0"



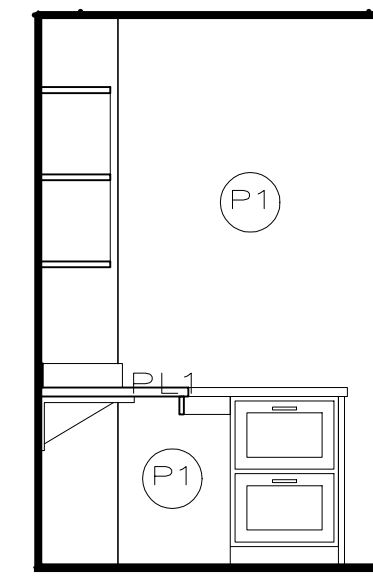
6 SPA A-106
SCALE: 3/8" = 1'-0"



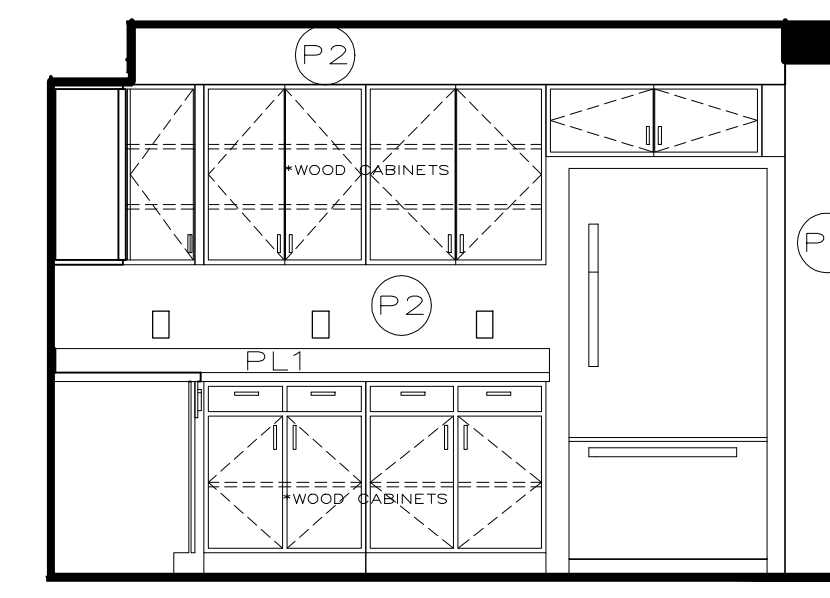
7 HEARTH A-102
SCALE: 3/8" = 1'-0"



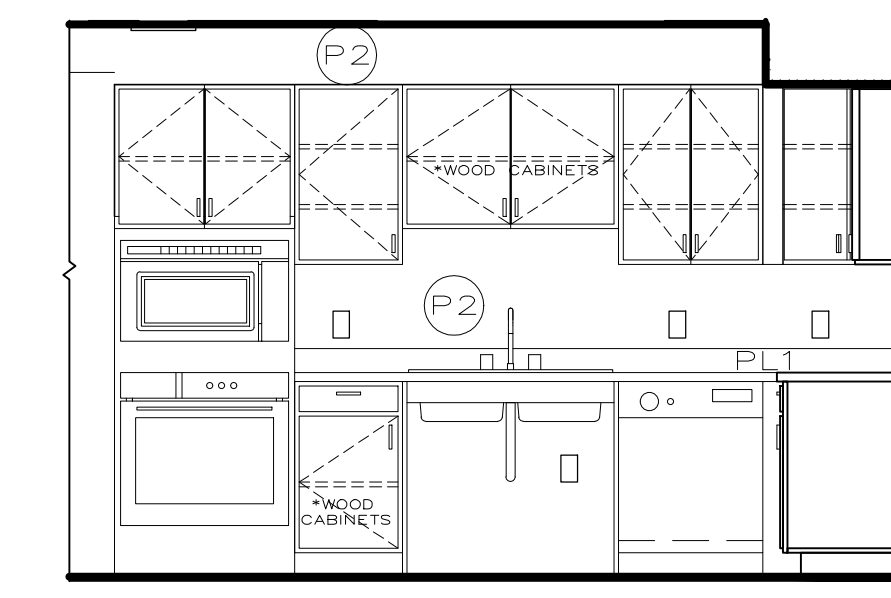
8 NURSE STATION A-104
SCALE: 3/8" = 1'-0"



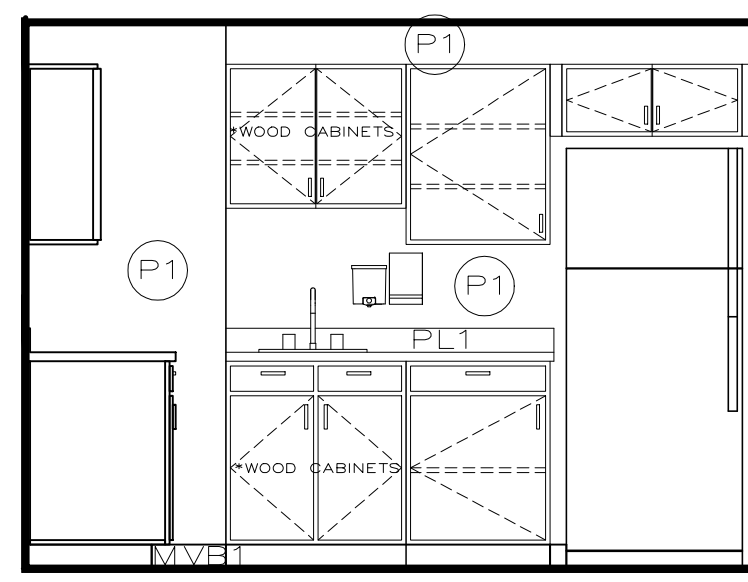
9 NURSE STATION A-104
SCALE: 3/8" = 1'-0"



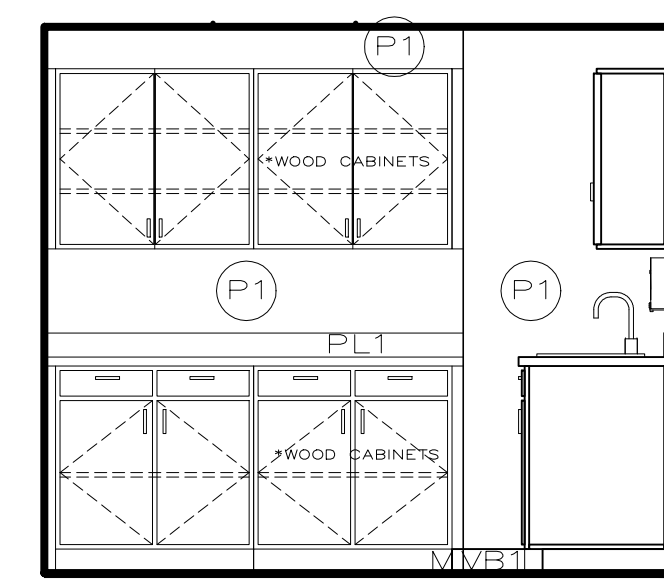
10 DINING/ACTIVITY A-103
SCALE: 3/8" = 1'-0"



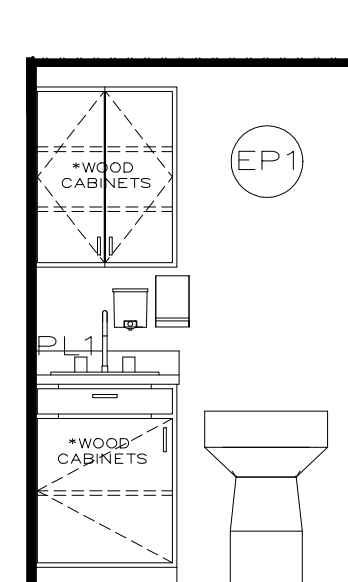
11 DINING/ACTIVITY A-103
SCALE: 3/8" = 1'-0"



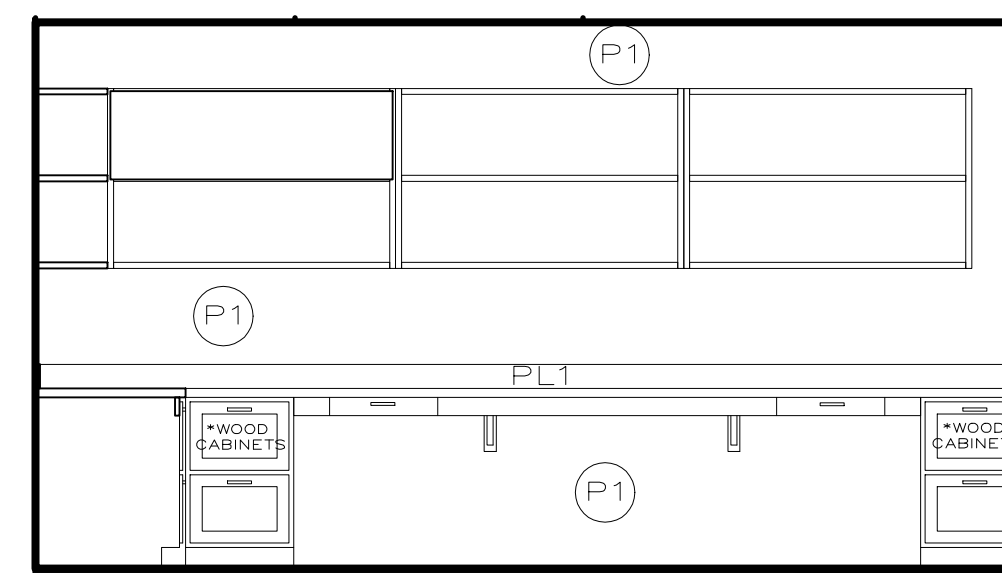
12 REMODELED MED. ROOM A-140
SCALE: 3/8" = 1'-0"



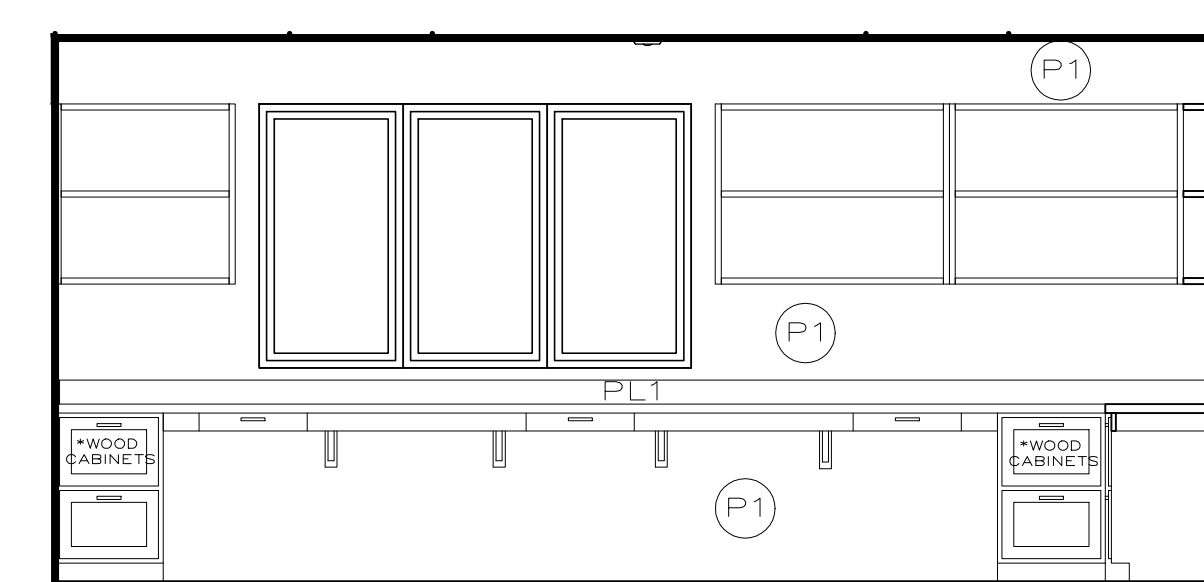
13 REMODELED MED. ROOM A-140
SCALE: 3/8" = 1'-0"



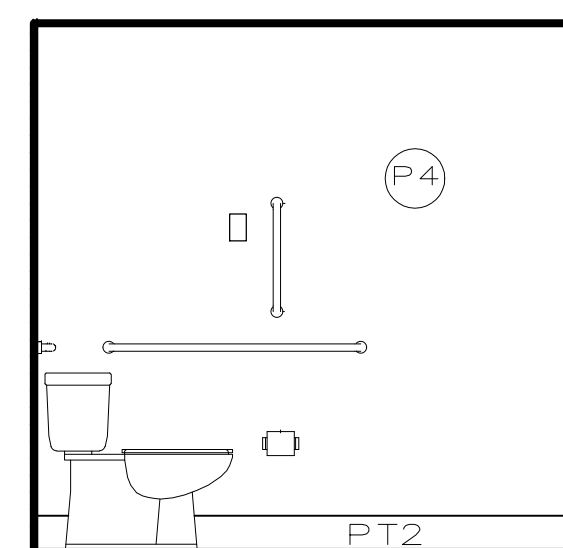
14 SOILED UTILITY A-112
SCALE: 3/8" = 1'-0"



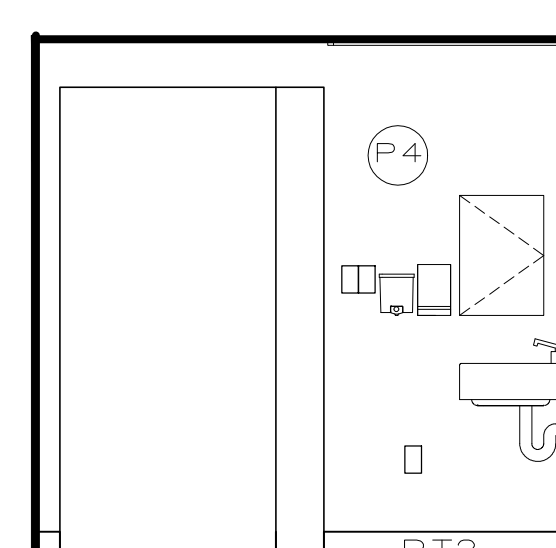
15 NURSES STATION A-141, CHARTS A-142
SCALE: 3/8" = 1'-0"



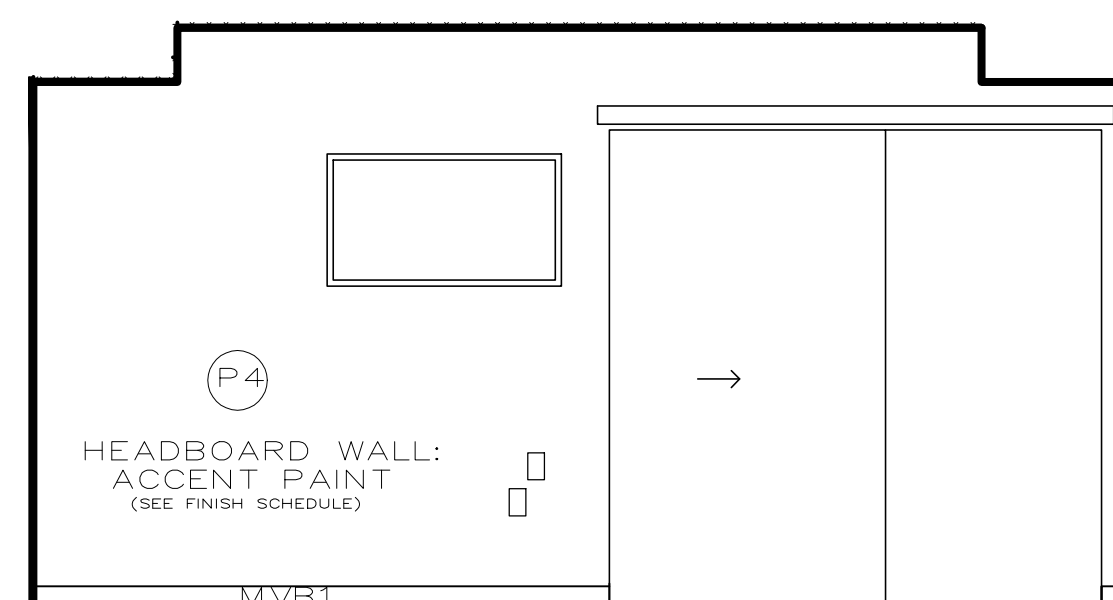
16 NURSES STATION A-141, CHARTS A-142
SCALE: 3/8" = 1'-0"



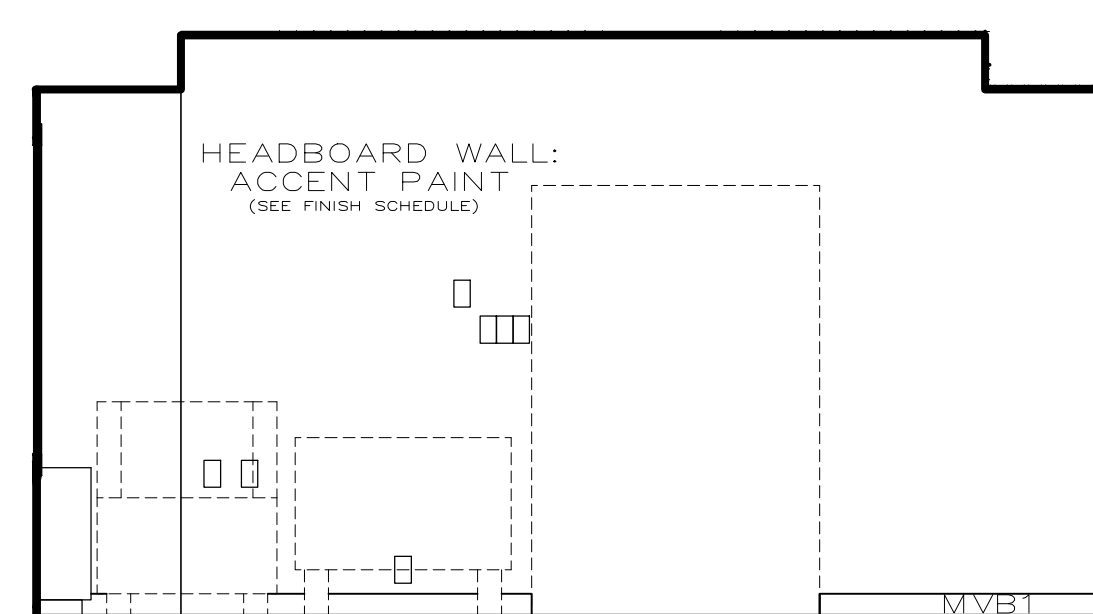
19 PRIVATE UNIT BATHROOM, TYP.
SCALE: 3/8" = 1'-0"



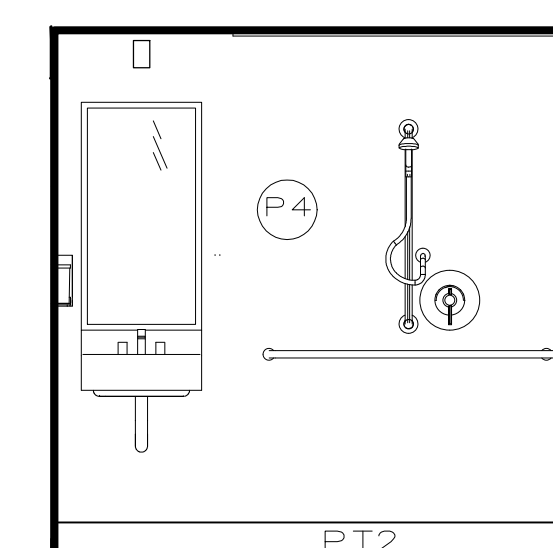
20 PRIVATE UNIT BATHROOM, TYP.
SCALE: 3/8" = 1'-0"



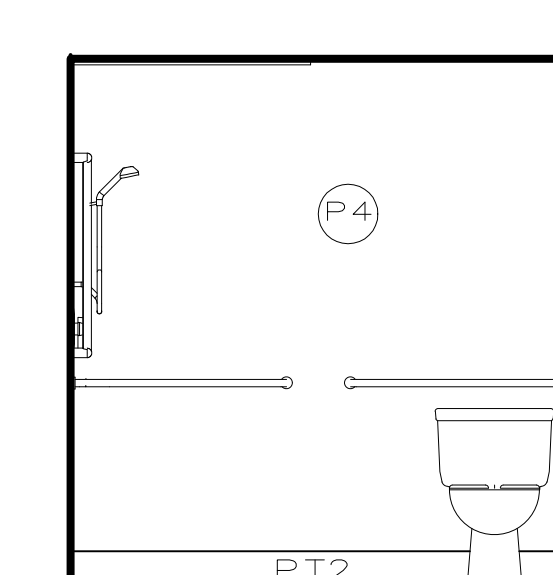
21 PRIVATE UNIT BEDROOM
SCALE: 3/8" = 1'-0"



22 PRIVATE UNIT BEDROOM
SCALE: 3/8" = 1'-0"



17 PRIVATE UNIT BATHROOM, TYP.
SCALE: 3/8" = 1'-0"



18 PRIVATE UNIT BATHROOM, TYP.
SCALE: 3/8" = 1'-0"