

ADDENDUM NO. 1

PROJECT NAME: Outdoor Adventure Center – Site Work
UNL PROJECT NUMBER: C220P001

CONSULTANT: Olsson Associates
ADDRESS: 1111 Lincoln Mall, Suite 111, Lincoln, NE, 68508

DATE OF ISSUANCE: April 19, 2012
DATE OF BID OPENING: April 26, 2012

The bid documents dated March 30, 2012 for the above referenced project are amended by this addendum.

NOTICE: This Addendum is issued to all interested prospective bidders as an amendment to the project manual or other parts of the bidding (contract) documents for the above named project. Reference to this Addendum must be included in the Bid proposal. The information contained herein shall be fully incorporated into the contract documents as though originally included therein.

1.1 MISCELLANEOUS

- A. The existing and proposed ground surfaces are available electronically for contractor verification via email in AutoCAD 2007 format. The contractor shall be responsible for verifying existing ground surface elevations.

1.2 CLARIFICATIONS TO SPECIFICATIONS

- A. A Question was asked about the 40 hour hazwoper Regulations of OSHA;
 - 1. Clarification: We are disclosing that there are contaminated soils on site. It is the contractor's responsibility to ensure they are following all OSHA Regulations for health and safety requirements and training. Contractor shall supply appropriate documentation immediately if requested by Owner or Engineer.
- B. A Question was asked about the requirement of an 'Engineer Approved Landfill';
 - 1. Clarification: An 'Engineered Approved Landfill' shall imply a Subtitle D Landfill.

1.3 REVISIONS TO DRAWING SHEETS

- A. Sheet C0.2 – DEMOLITION PLAN
 - 1. SITE LEGEND, Note P. Replace text with *"REMOVE AND DISPOSE TREE/BUSH, COMPLETE"*.
 - 2. SITE LEGEND, Note V. Added Note, to State *"COORDINATE WITH OWNER'S REPRESENTATIVE FOR TREE/BUSH PROTECTION, IN PLACE"*
 - 3. Revised Sheet; Trees and Bushes along 14th Street shall remain in place. Trees and Bushes within parking lot and along 'W' Street shall be removed and disposed.

ADDENDUM NO. 1

Project Name: Outdoor Adventure Center – Site Work

Project Number: C220P001

2 of 2

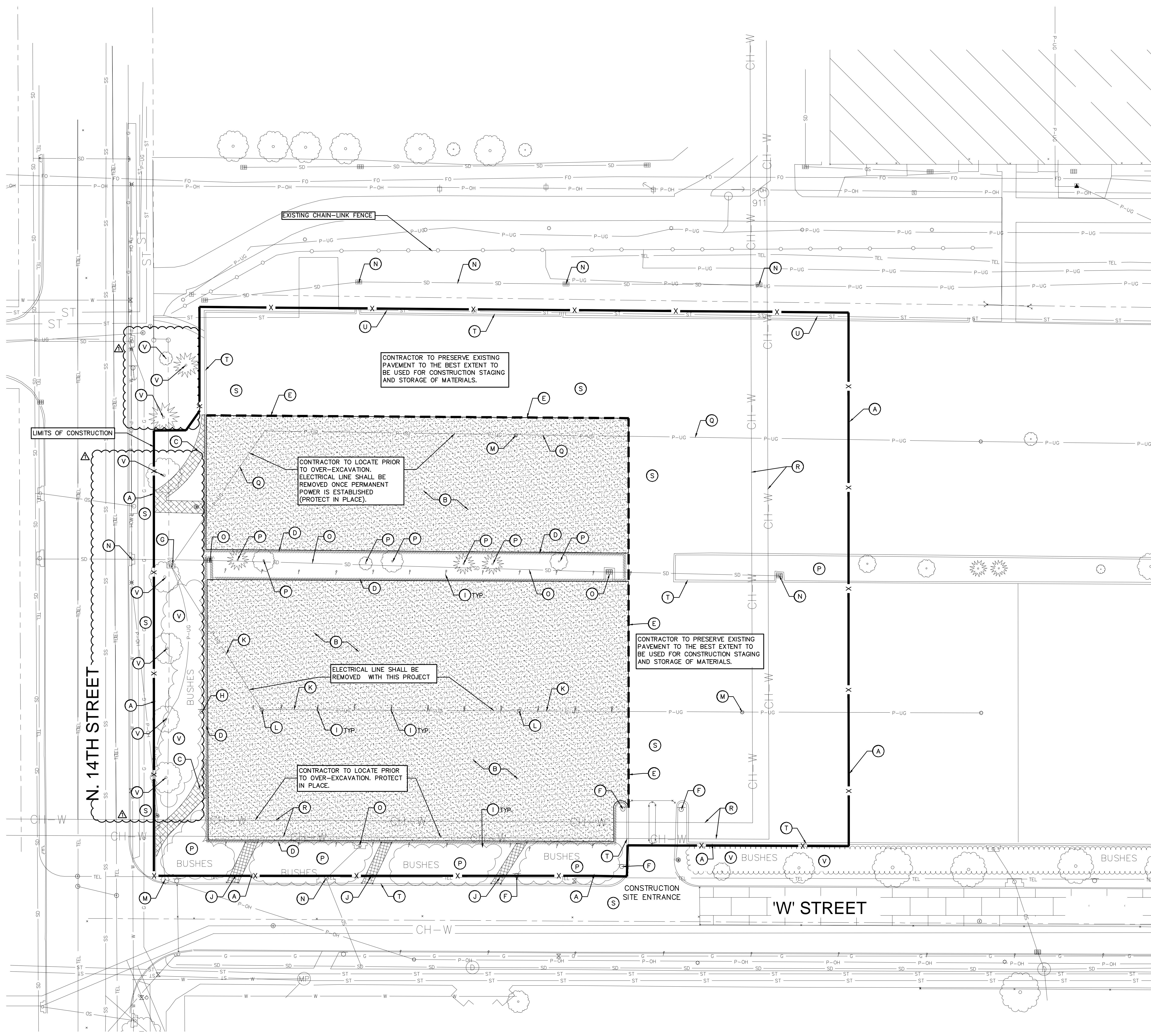
B. Sheet C2.1 – GRADING AND EROSION CONTROL PLAN

1. Revised plan for smaller footprint of building.
2. Revised plan to delineate area of 4' over-excavation and 6' over-excavation based on boring logs.
3. Revised plan to show boring locations per Geotechnical Report.
4. Revised Plan to update finish grade elevation to 1152.33.

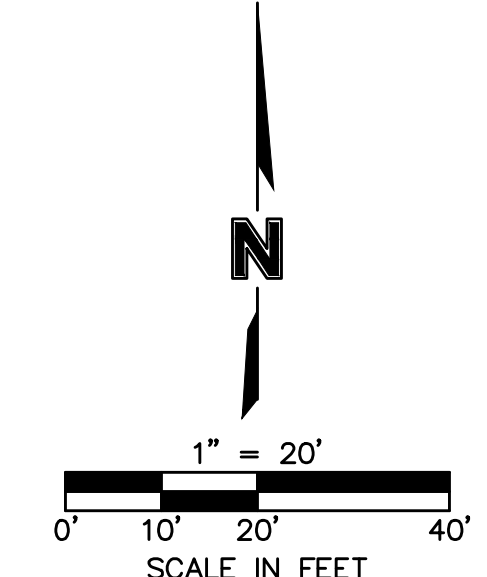
C. Sheet C3.1 – SITE UTILITY PLAN

1. Revised Plan to eliminate proposed grate inlet and remove inlet detail.
2. Revised Plan to move proposed conduit west.

END OF ADDENDUM NO. 1



- DEMO LEGEND**
- (A) PERMANENT CONSTRUCTION FENCE, FENCE SHALL REMAIN IN PLACE UNTIL BUILDING COMPLETION, FENCE WILL BE REMOVED BY BUILDING CONTRACTOR
 - (B) REMOVE AND DISPOSE ASPHALT PAVEMENT
 - (C) REMOVE AND DISPOSE CONCRETE SIDEWALK
 - (D) REMOVE AND DISPOSE CURB & GUTTER
 - (E) SAWCUT ASPHALT PAVEMENT
 - (F) PROTECT EXISTING SIGN, IN PLACE
 - (G) EXISTING ELECTRICAL METER SHALL BE PROTECTED IN PLACE UNTIL PERMANENT POWER CAN BE ESTABLISHED ON SITE
 - (H) REMOVE AND DISPOSE OF PARKING SIGN POSTS, COMPLETE
 - (I) REMOVE AND DISPOSE OF PARKING METER POSTS, COMPLETE
 - (J) REMOVE BRICK PAVING, SALVAGE TO OWNER
 - (K) REMOVE UNDERGROUND POWER, COMPLETE
 - (L) REMOVE AND DISPOSE LIGHT POLE, COMPLETE
 - (M) PROTECT LIGHT POLE, IN PLACE
 - (N) PROTECT STORM SEWER INLET AND PIPE, IN PLACE
 - (O) REMOVE AND DISPOSE STORM SEWER INLET AND PIPE, COMPLETE
 - (P) REMOVE AND DISPOSE TREE/BUSH, COMPLETE
 - (Q) PROTECT UNDERGROUND POWER, IN PLACE, CONTRACTOR TO LOCATE EXISTING UNDERGROUND POWER UTILITIES AND PROTECT DURING OVER-EXCAVATION AND GRADING OPERATIONS.
 - (R) PROTECT UNDERGROUND TOWER WATER SUPPLY/RETURN PIPES, IN PLACE, CONTRACTOR TO LOCATE EXISTING UNDERGROUND TOWER WATER SUPPLY LINES UTILITIES AND PROTECT DURING OVER-EXCAVATION AND GRADING OPERATIONS.
 - (S) PROTECT EXISTING PAVEMENT
 - (T) PROTECT CURB & GUTTER
 - (U) PROTECT UNDERGROUND STEAM AND CONDENSATE LINES, IN PLACE, CONTRACTOR TO VERIFY LOCATION AND DEPTH PRIOR TO FENCE INSTALLATION.
 - (V) COORDINATE WITH OWNER'S REPRESENTATIVE FOR TREE/BUSH PROTECTION, IN PLACE



DEMOLITION PLAN NOTES

1. PRIOR TO DEMOLITION OCCURRING, EROSION CONTROL DEVICES ARE TO BE INSTALLED. EROSION CONTROL DEVICES WILL BE ADJUSTED AS DEMOLITION AND CONSTRUCTION PROCEEDS.
2. THE CONTRACTOR IS RESPONSIBLE FOR THE DEMOLITION, REMOVAL, AND DISPOSING IN A MANNER APPROVED BY ALL GOVERNING AUTHORITIES, FOR ALL STRUCTURES, PADS, WALLS, PANS, FOUNDATIONS, PAVEMENT, UTILITIES, ETC. TO BE DEMOLISHED, SUCH THAT THE IMPROVEMENTS SHOWN ON THE REMAINING PLANS CAN BE CONSTRUCTED. ALL FACILITIES TO BE REMOVED SHALL BE UNDERCUT TO SUITABLE GRADE AND BROUGHT UP TO PROPOSED GRADE WITH SUITABLE COMPACTED FILL MATERIAL PER THE SPECIFICATIONS.
3. THE CONTRACTOR IS RESPONSIBLE FOR REMOVING ALL DEBRIS FROM THE SITE AND DISPOSING THE DEBRIS IN A LAWFUL MANNER. THE CONTRACTOR IS RESPONSIBLE FOR OBTAINING ALL PERMITS REQUIRED FOR DEMOLITION AND DISPOSAL.
4. THE EXISTENCE AND LOCATION OF UNDERGROUND UTILITY PIPES SHOWN ON THESE PLANS WERE OBTAINED BY A SEARCH OF AVAILABLE RECORDS AND TO THE BEST OF OUR KNOWLEDGE CONSTITUTES ALL KNOWN FACILITIES. HOWEVER, THE CONTRACTOR IS REQUIRED TO TAKE DUE PRECAUTIONARY MEASURES TO PROTECT ANY EXISTING UTILITIES OR STRUCTURES LOCATED AT THE WORK SITE. IT IS THE CONTRACTOR'S RESPONSIBILITY TO CONTACT DIGGERS HOTLINE OF NEBRASKA AT 1-800-331-5666 IN ADVANCE OF ANY EXCAVATION FOR THE MARK-OUT OF THE LOCATION OF UTILITIES AND NOTIFICATION OF COMMENCEMENT OF WORK.
5. BEFORE EXCAVATING FOR THIS CONTRACT, THE CONTRACTOR SHALL FIELD VERIFY LOCATION OF UNDERGROUND UTILITIES. CONTRACTOR SHALL MAKE EXPLORATION EXCAVATIONS AND LOCATE EXISTING UNDERGROUND UTILITIES SUFFICIENTLY AHEAD OF CONSTRUCTION TO PERMIT REVISIONS TO PLANS IF REVISIONS ARE NECESSARY. BECAUSE OF ACTUAL LOCATION OF EXISTING FACILITIES, CONTRACTOR IS REQUIRED TO TAKE PRECAUTIONARY MEASURES TO PROTECT THE UTILITY LINES SHOWN AND ANY OTHER EXISTING LINES NOT OF RECORD OR NOT SHOWN ON THESE PLANS.
6. THE CONTRACTOR SHALL COORDINATE WITH RESPECTIVE UTILITY COMPANIES PRIOR TO THE REMOVAL AND/OR RELOCATION OF UTILITIES. THE CONTRACTOR SHALL COORDINATE WITH THE UTILITY COMPANY CONCERNING PORTIONS OF WORK WHICH MAY BE PERFORMED BY THE UTILITY COMPANY'S FORCES AND ANY FEES WHICH ARE TO BE PAID TO THE UTILITY COMPANY FOR THEIR SERVICES. THE CONTRACTOR IS RESPONSIBLE FOR PAYING ALL FEES AND CHARGES.
7. ELECTRICAL, TELEPHONE, CABLE, WATER, FIBER OPTIC CABLE AND/OR GAS LINES NEEDING TO BE REMOVED OR RELOCATED SHALL BE COORDINATED WITH THE AFFECTED UTILITY COMPANY. ADEQUATE TIME SHALL BE PROVIDED FOR RELOCATION AND CLOSE COORDINATION WITH THE UTILITY COMPANY IS NECESSARY TO PROVIDE A SMOOTH TRANSITION IN UTILITY SERVICE. CONTRACTOR SHALL PAY CLOSE ATTENTION TO EXISTING UTILITIES WITHIN ANY ROAD RIGHT OF WAY DURING CONSTRUCTION.
8. CONTRACTOR MUST PROTECT THE PUBLIC AT ALL TIMES USING MEANS OF THEIR CHOICE.
9. SHOULD REMOVAL AND/OR RELOCATION ACTIVITIES DAMAGE ANY EXISTING IMPROVEMENTS TO/ON, THEN THE CONTRACTOR SHALL RESTORE TO EQUIVALENT CONDITIONS AT HIS OWN COST.

1111 Lincoln Mall, Suite 111
 P.O. Box 8498
 Lincoln, NE 68501-4808

TEL: 402.474.6311
 FAX: 402.474.5160
 www.molssonllc.com

This document was originally approved and sealed on 04.17.12, by Nathaniel K. Buss, a licensed professional engineer in the State of NEBRASKA, E-13150

The information herein is of proprietary nature and is submitted in confidence for the use of our clients only. Unauthorized reproduction, distribution, or dissemination, in whole or in part is prohibited. The information contained herein is and remains the property of Molsson Associates and receipt or possession of this information confers no right in or license to disclose to others the subject matter contained herein for any unauthorized purposes. All rights reserved.

REV. NO.	DATE	REVISION DESCRIPTION
1	04/17/12	ADDENDUM #1

DEMOLITION PLAN

UNIVERSITY OF NEBRASKA-LINCOLN
OUTDOOR ADVENTURE CENTER

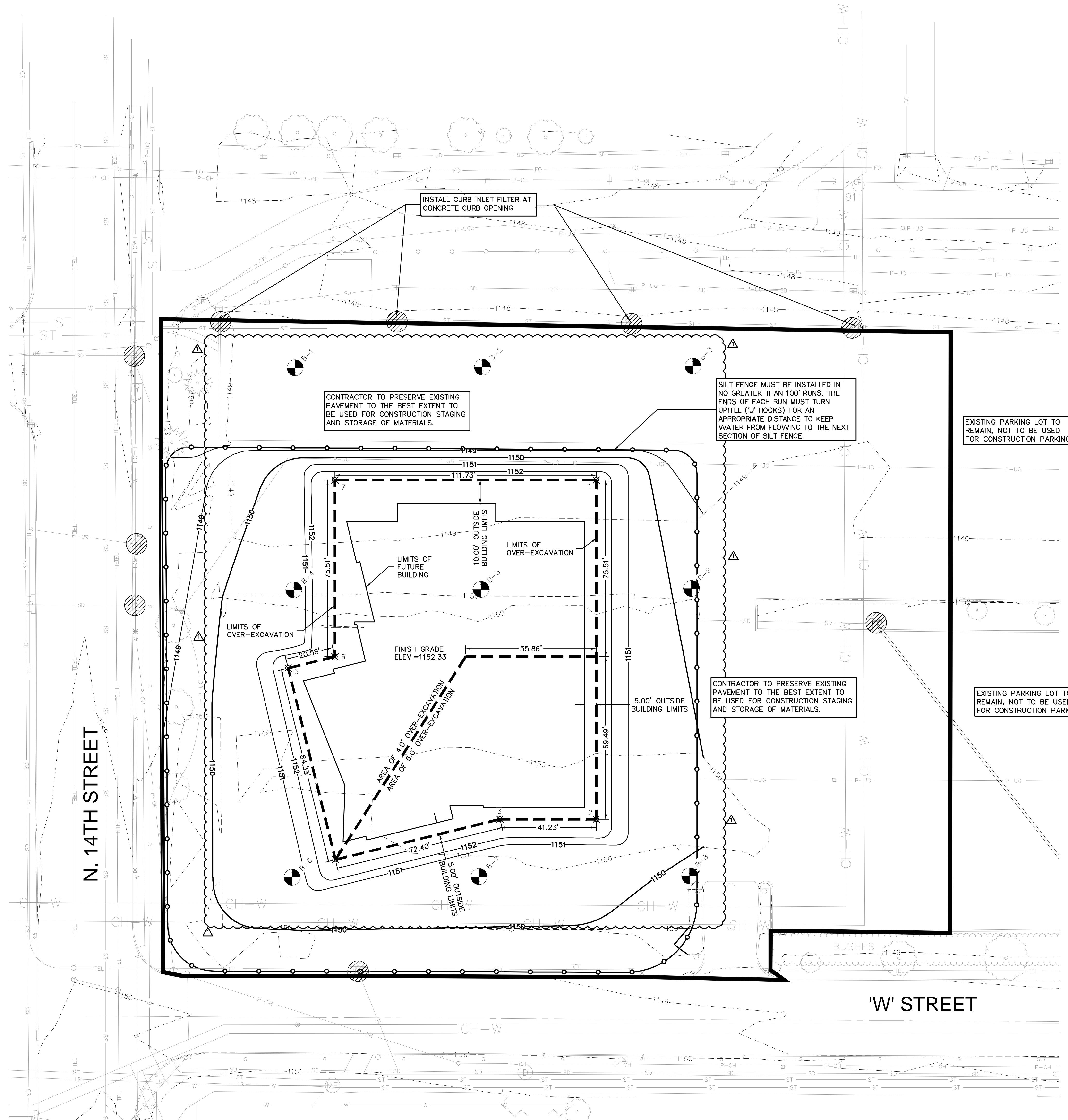
LINCOLN, NE

2012

drawn by: NKS
 checked by: NKS
 approved by: NKS
 CADD by: NKS
 project no.: 011-2379
 drawing no.: 0112379_DEMO.dwg
 date: 03.26.12

C0.2

DWG: F:\Projects\011-2848\LDVP\Final_Plan\112379_C2.1_GRAD.dwg
 DATE: Apr 17, 2012 11:11am
 USER: nbuss
 XREFS: 112848_XBASE 112848_PCONT 112848_PBASE 112379_PBASE 112379_XBASE NATE_BUSS_PE_NE A1-01 SP3.1_Layout



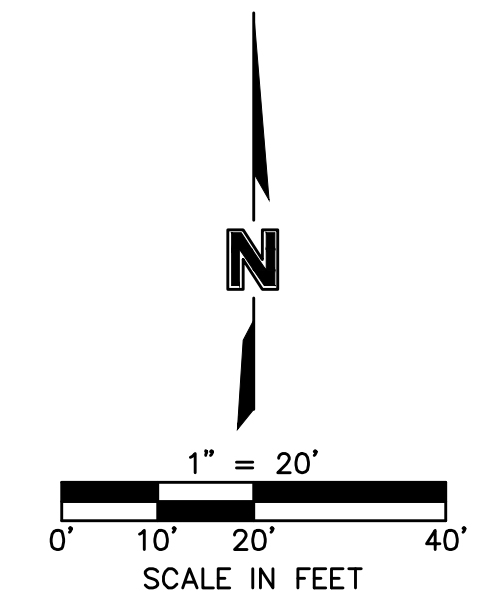
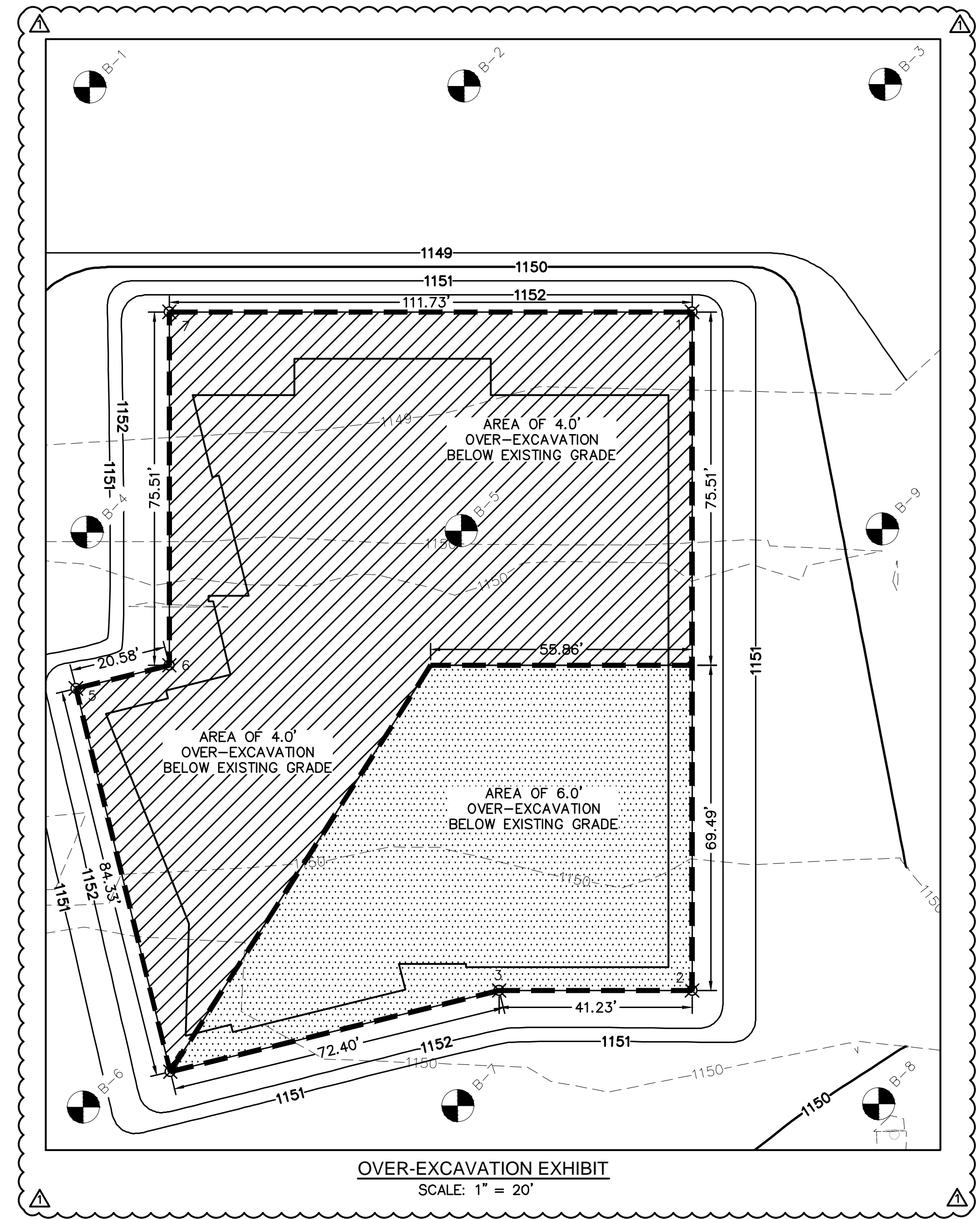
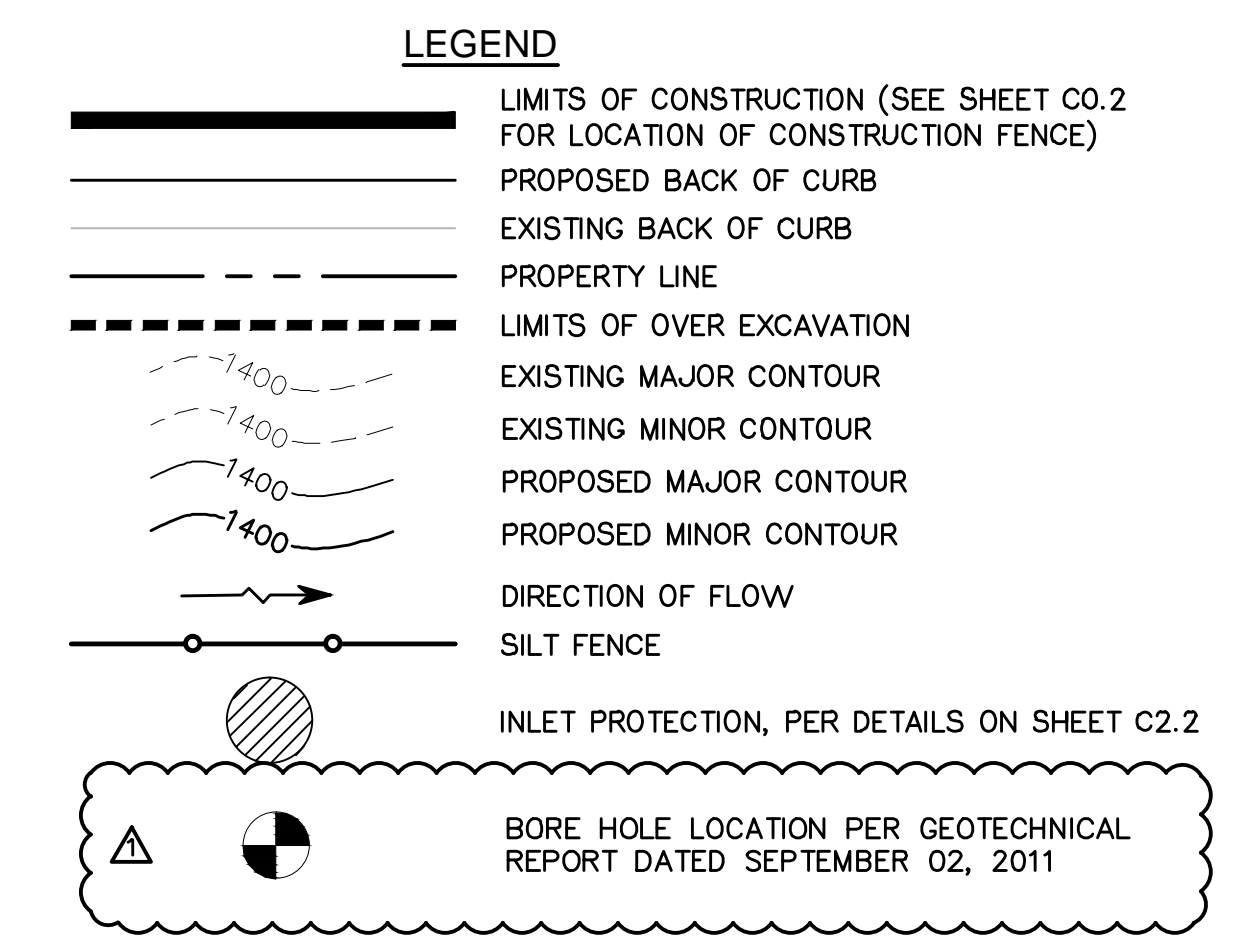
SITE INFORMATION

TOTAL DISTURBED AREA	1.16 Ac.
TOTAL SITE AREA	2.12 Ac.
NPDES PERMIT IS REQUIRED	

POINT TABLE

POINT #	NORTHING	EASTING	ELEVATION
1	48221.47	50225.00	1152.33
2	48076.47	50225.00	1152.33
3	48076.47	50183.77	1152.33
4	48059.15	50113.47	1152.33
5	48141.04	50093.29	1152.33
6	48145.96	50113.27	1152.33
7	48221.47	50113.27	1152.33

NOTE: ELEVATION REPRESENTS FINAL GRADE.



CONTAMINATED SOILS NOTE:
 CONTRACTOR SHALL BE MADE AWARE THAT PETROLEUM CONTAMINATED SOILS HAVE BEEN ENCOUNTERED ON SITE. A SOILS BORING LOG AND ASSESSMENT IS AVAILABLE UPON REQUEST.

OVER-EXCAVATION NOTE:
 REFER TO SPECIFICATIONS AND GEOTECHNICAL REPORT. DEPTHS OF OVER-EXCAVATION ARE BASED ON BORING LOGS FROM THE GEOTECHNICAL REPORT. IT IS THE CONTRACTOR'S RESPONSIBILITY TO VERIFY DEPTHS AND COORDINATE WITH OLSSON ASSOCIATES FOR ON-SITE OBSERVATIONS.

THE UNDERSIGNED CERTIFIES THIS PLAN HAS BEEN DESIGNED IN ACCORDANCE WITH THE TERMS OF THE INTERLOCAL AGREEMENT FOR NPDES COMPLIANCE.

This document was originally approved and sealed on 04.17.12, by Nathaniel K Buss, a licensed professional engineer in the State of NEBRASKA, E-13150

NATHANIEL K BUSS, PE

Diggers Hotline
 Of Nebraska

Statewide (800) 331-5666
 www.ne-diggers.com
 Call Before You Dig... Is The Law

OLSSON ASSOCIATES
 1111 Lincoln Mall, Suite 111
 P.O. Box 8498
 Lincoln, NE 68501-4608
 TEL: 402.474.6311
 FAX: 402.474.5160
 www.olsonassociates.com

This document was originally approved and sealed on 04.17.12, by Nathaniel K Buss, a licensed professional engineer in the State of NEBRASKA, E-13150

The information herein is of proprietary nature and is submitted in confidence for the use of our clients only. Unauthorized reproduction, distribution, or dissemination, in whole or in part is prohibited. The information contained herein is and remains the property of Olsson Associates and receipt or possession of this information confers no right in or license to disclose to others the subject matter contained herein for any but authorized purposes. All rights reserved.

REV. NO.	DATE	REVISIONS DESCRIPTION	ADDENDUM #1
1	04/17/12		

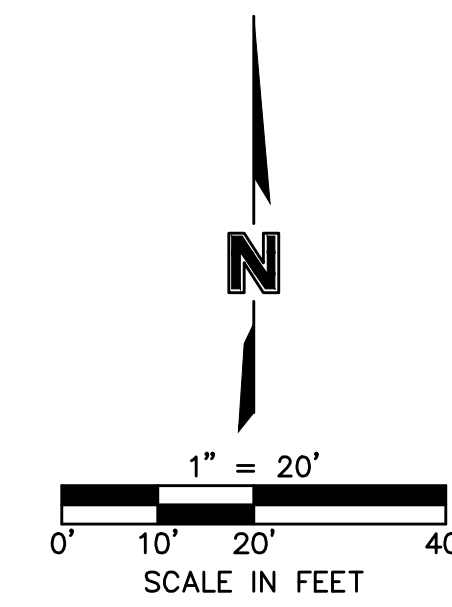
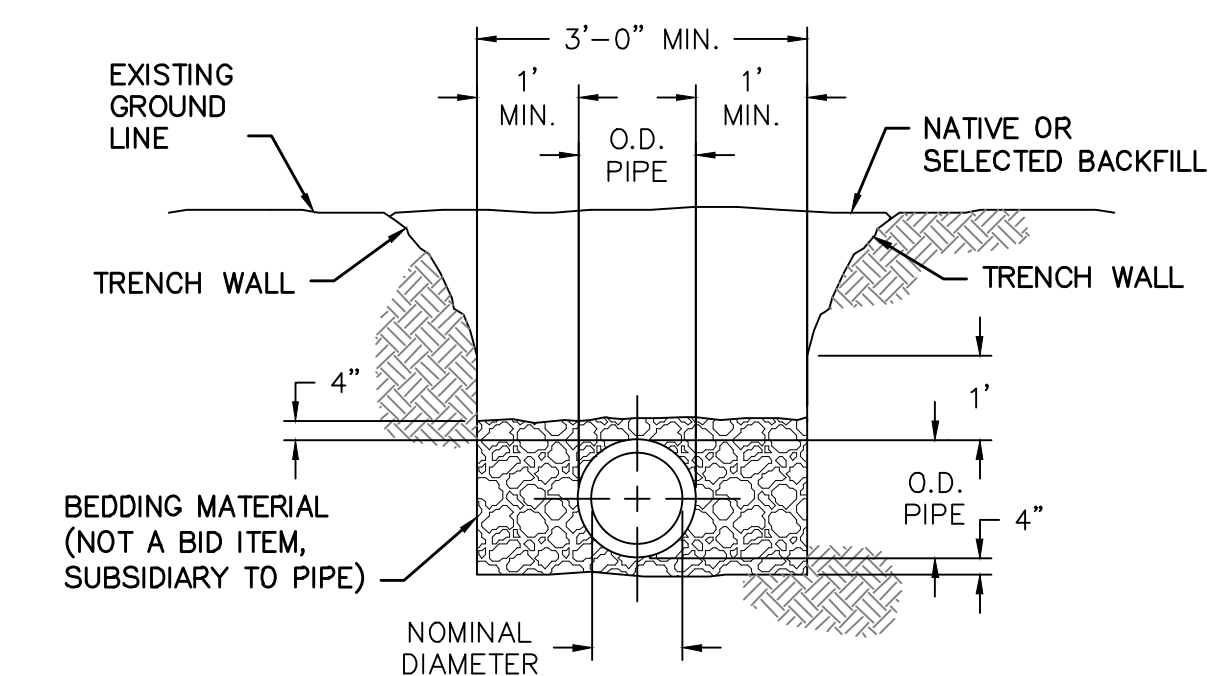
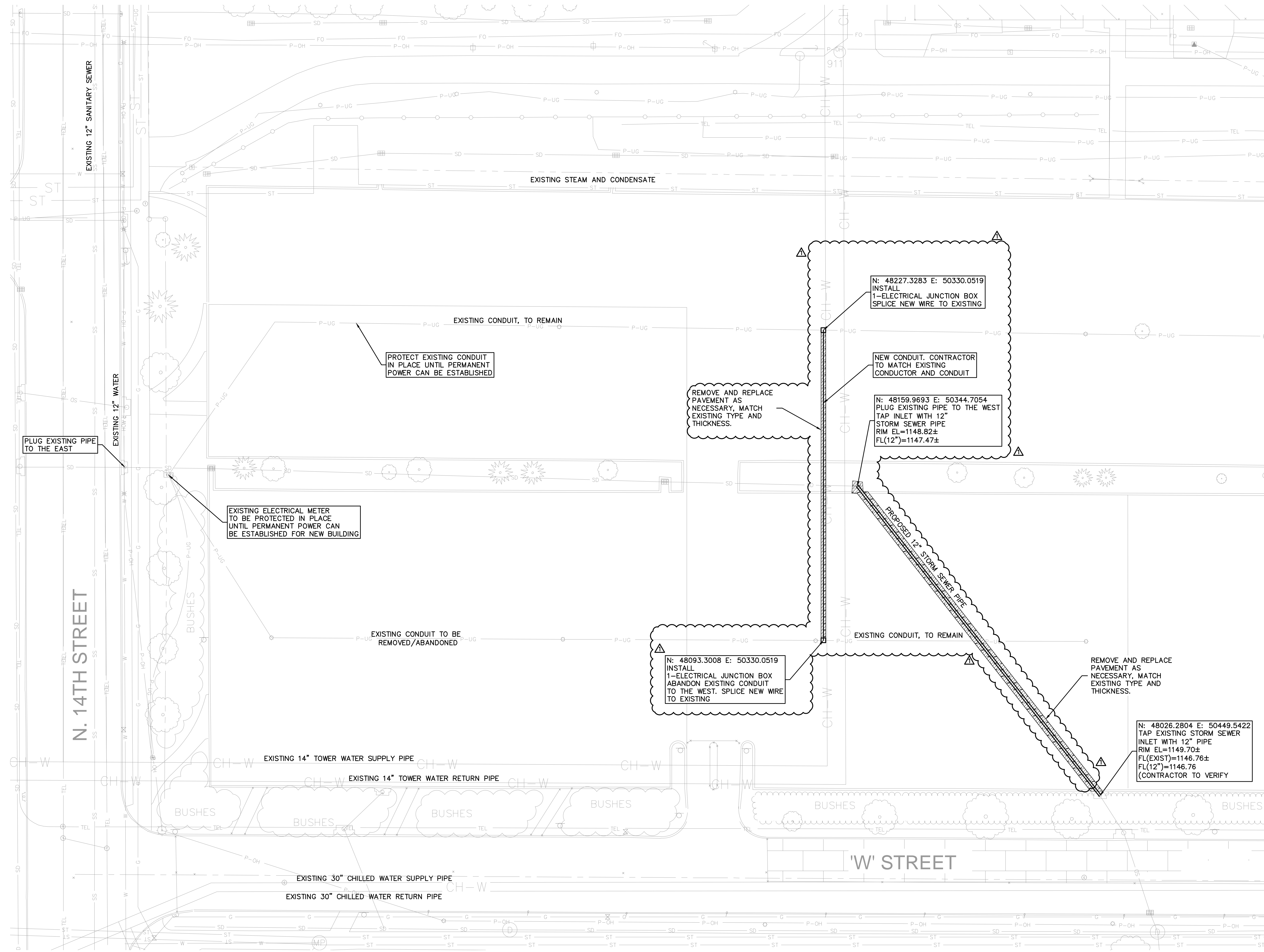
GRADING AND EROSION CONTROL PLAN
 UNIVERSITY OF NEBRASKA - LINCOLN
 OUTDOOR ADVENTURE CENTER
 LINCOLN, NE

2012

REVISIONS

drawn by: NKS
 checked by: NKS
 approved by: NKS
 CADD by: NKS
 project no.: 011-2848
 drawing no.: 0112379_GRAD.dwg
 date: 03.26.2012

C2.1



This document was originally approved and sealed on 04.17.12, by Nathaniel K. Buss, a licensed professional engineer in the State of NEBRASKA, E-13150

The information herein is of proprietary nature and is submitted in confidence for the use of our clients only. Unauthorized reproduction, distribution, or dissemination, in whole or in part, is prohibited. The information contained herein is and remains the property of Molsson Associates and receipt or possession of this information confers no right in or license to disclose to others the subject matter contained herein for any but authorized purposes. All rights reserved.

REV. NO.	DATE	REVISIONS DESCRIPTION
1	04.17.12	ADDENDUM #1

REVISIONS

2012

SITE UTILITY PLAN

UNIVERSITY OF NEBRASKA - LINCOLN

OUTDOOR ADVENTURE CENTER

LINCOLN, NE



drawn by: NKB
 checked by: NKB
 approved by: NKB
 GADG by: NKB
 project no.: 011-2379
 drawing no.: 0112379_UTL.dwg
 date: 03.26.12