

155-056-10

ADDENDUM NO. 7

The Architect/ Engineer issues this addendum, applicable to the above named project, to all known Contractors before receipt of proposal.

This addendum includes Item Number 7-1 thru 7-5. This addendum item shall be fully incorporated into the Bidding/Contract Documents and have the same force and effect as though originally included.

The Bidder shall acknowledge receipt of this Addendum No. 7 on the Bid Proposal Form in the place provided.

ARCHITECTURAL

Drawings

Item 7-1: Sheet A0.4 – Fourth Floor Demolition Plan

Refer to attached supplemental drawing SDA-008 for changes to drawing. Demolition of window system and a 4' section of wall from floor to window sill.

Item 7-2: Sheet A1.4 – Fourth Floor Plan

Refer to attached supplemental drawing SDA-009 for changes to List drawing. Tooth-in brick @ wall jamb, infill window sill and add expansion joint cover.

Item 7-3: Sheet A1.10 – Fourth Floor Reflected Ceiling Plan

Refer to attached supplemental drawing SDA-010 for changes to drawing. Add Gyp. Bulkhead @ new opening.

MECHANICAL

Specifications

Item 7-4: Section 238216 – Air Coils

Reference Paragraph 2.2.B: Delete the cooling coil CC-1 threaded plugs in the return bends and in headers opposite each tube.

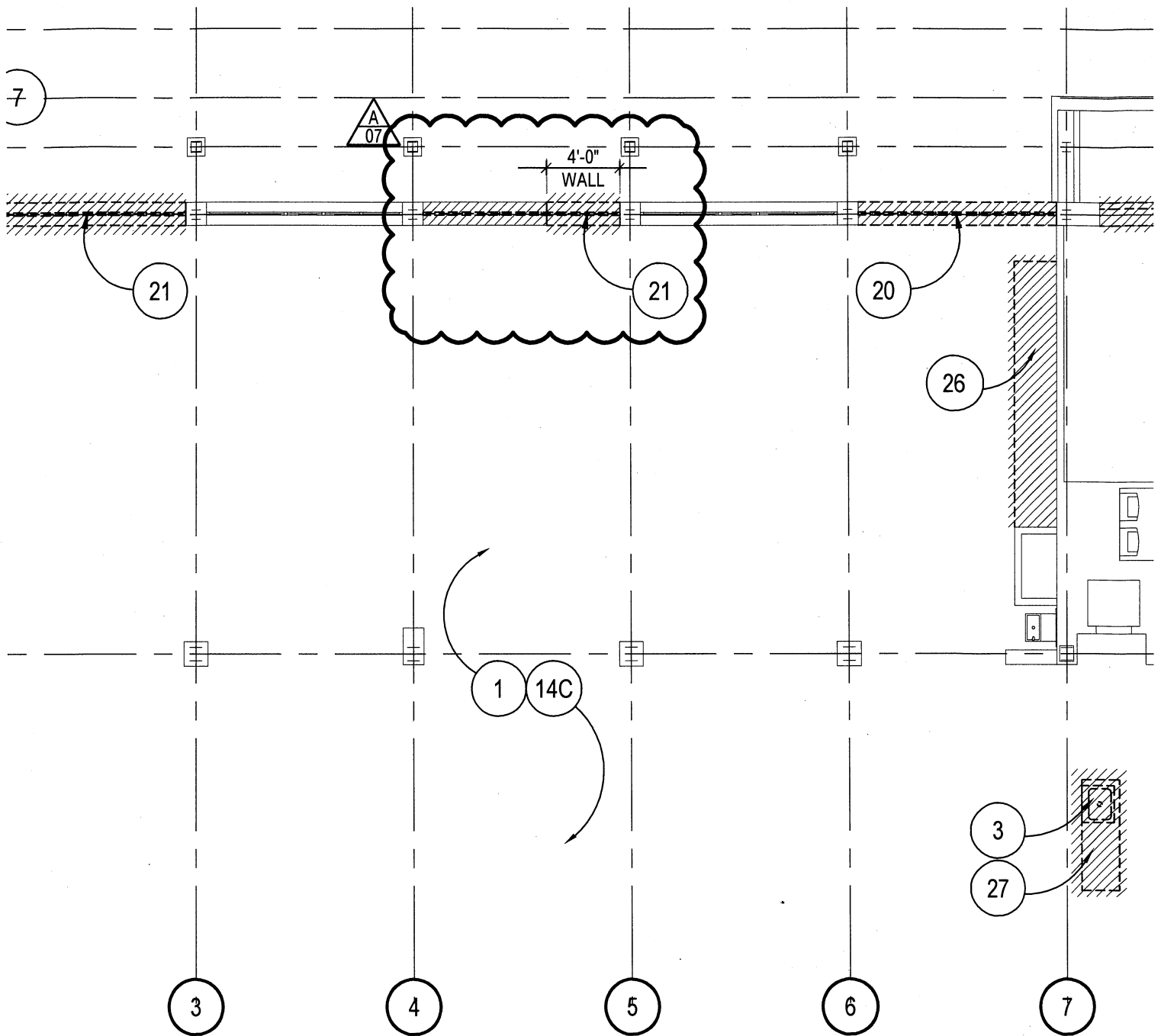
155-056-10


Drawings

Item 7-5: Sheets M1.1 – Basement HVAC Plan and Sheet M4.2 Control Drawing and Sequence of Operations

Refer to Sheet M1.1 and Sheet M4.2 - AHU Control Drawing and Sequence of Operations: BMS contractor to replace the existing pneumatic actuators on the existing OA and relief air dampers with electronic modulating type actuators, interfaced with the BMS to operate as per the Sequence of Operations.

END OF ADDENDUM NO. 7

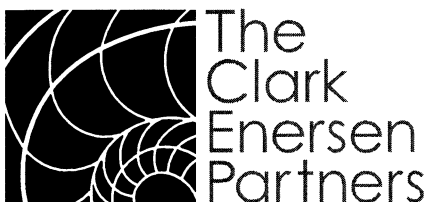


 21. REMOVE WINDOW FRAME SYSTEM, SILL, AND WALL CONSTRUCTION BELOW TO EXTENT SHOWN; SALVAGE BRICK FOR REUSE.



PARTIAL FOURTH FLOOR DEMOLITION PLAN

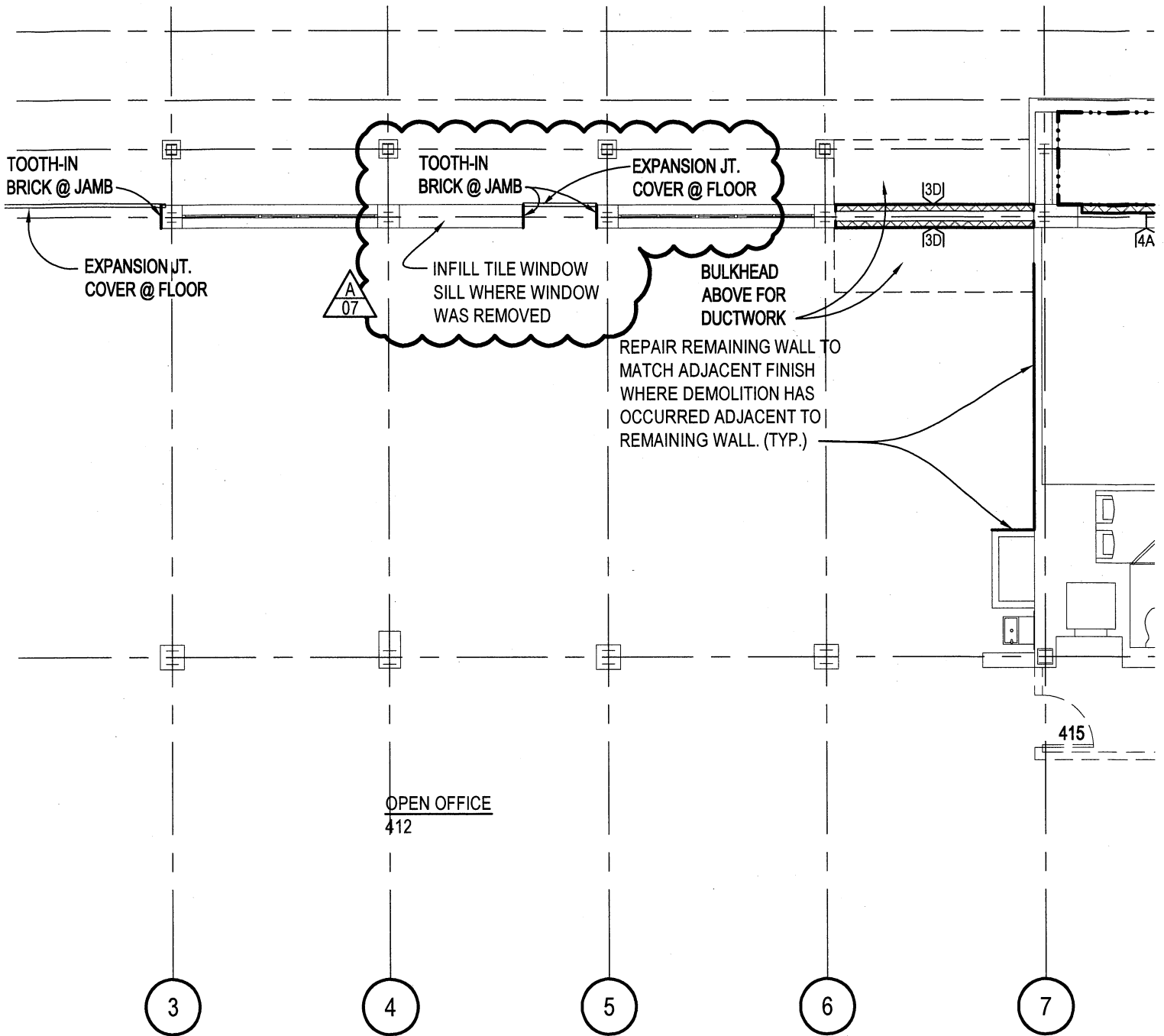
SCALE: 1/8"=1'-0"



The Clark Enersen Partners
 Architecture + Landscape Architecture + Engineering + Interiors
 1010 Lincoln Mall, Suite 200 Lincoln, NE 68508-2883
 402 477.9291 Fax 402 477.6542
 Kansas City, MO Overland Park, KS www.clarkenersen.com

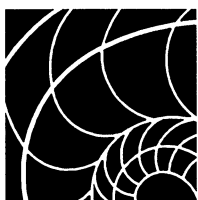
Nebraska Administrative Services - 1526 Building Remodel
 Lincoln, NE
 TCEP Project No.: 156-056-10

Addendum #07
 Supplemental Drawing: SDA-008
 Revision of Sheet: A0.4
 Date: April 06, 2012



PARTIAL FOURTH FLOOR PLAN

SCALE: 1/8"=1'-0"

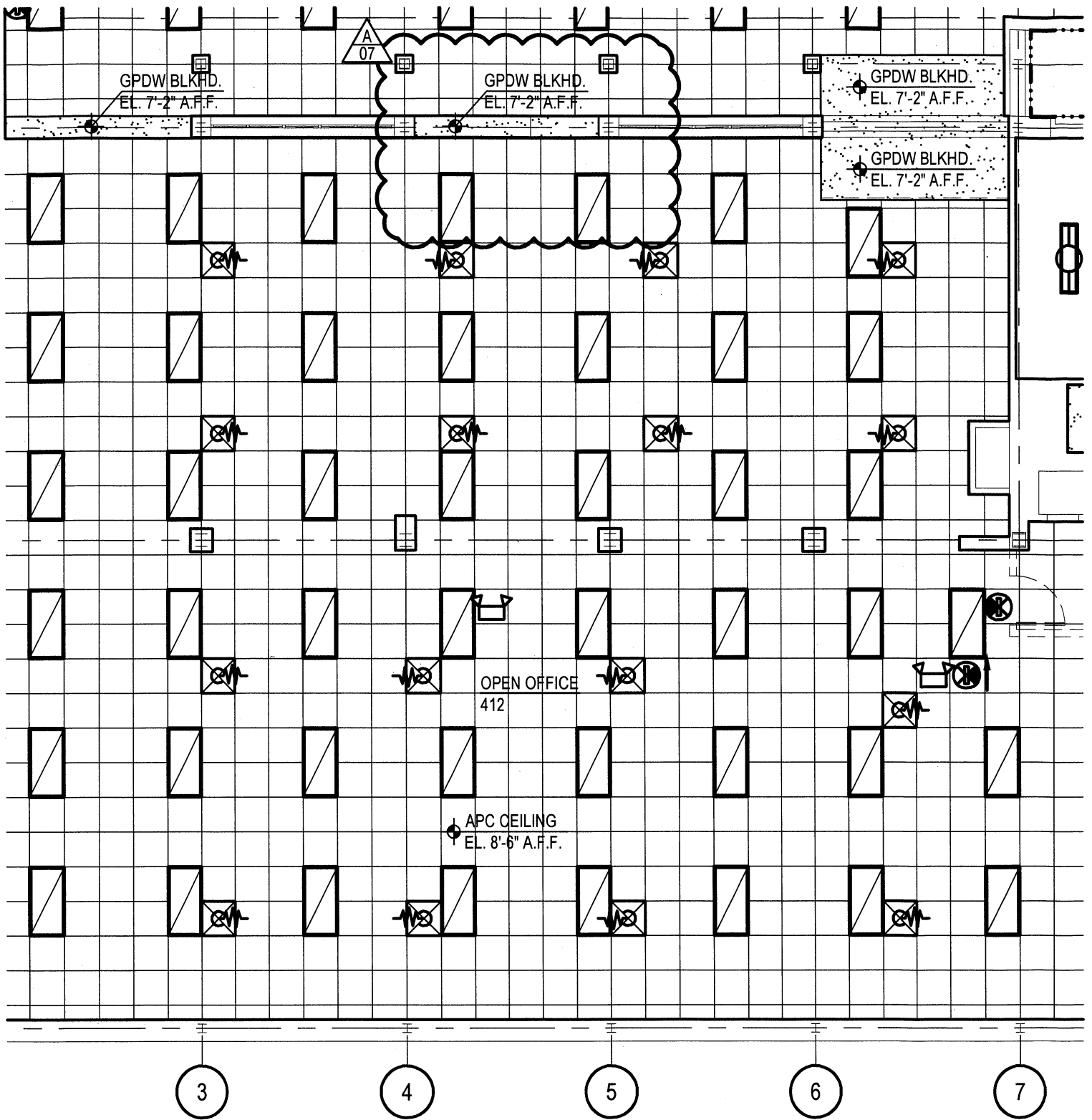


The
Clark
Enersen
Partners

Architecture + Landscape Architecture + Engineering + Interiors
1010 Lincoln Mall, Suite 200 Lincoln, NE 68508-2883
402 477.9291 Fax 402 477.6542
Kansas City, MO Overland Park, KS www.clarkenersen.com

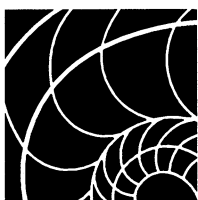
Nebraska Administrative Services - 1526 Building Remodel
Lincoln, NE
TCEP Project No.: 156-056-10

Addendum #07
Supplemental Drawing: SDA-009
Revision of Sheet: A1.4
Date: April 06, 2012



PART. FOURTH FLOOR REFLECTED CEILING PLAN

SCALE: 1/8"=1'-0"



**The
Clark
Enersen
Partners**

Architecture + Landscape Architecture + Engineering + Interiors
 1010 Lincoln Mall, Suite 200 Lincoln, NE 68508-2883
 402 477.9291 Fax 402 477.6542
 Kansas City, MO Overland Park, KS www.clarkenersen.com

Nebraska Administrative Services - 1526 Building Remodel
 Lincoln, NE
 TCEP Project No.: 156-056-10

Addendum #07
 Supplemental Drawing: SDA-010
 Revision of Sheet: A1.10
 Date: April 06, 2012