



ARCHITECTURE • ENGINEERING • INTERIOR DESIGN

ADDENDUM

PROJECT: Cherokee Regional Medical Center
Emergency Department Addition
& Surgery / CS Remodel
Cherokee, Iowa

ADDENDUM NUMBER

AD-1

ISSUED BY:

Wade Stange, Architect
John Meis, Civil Engineer
Mike Wachal, Structural Engineer
Bryce Johnson, Mechanical Engineer
Jon Dalton, Electrical Engineer

PROJECT #: 11-0121

DATE ISSUED: Thursday, April 5, 2012

This addendum is issued by the Architect to all known bidders before receipt of proposals, for the purpose of explaining, interpreting, or modifying the original plans and specifications. When enumerated by the bidder upon the proposal sheet, the information or instructions given hereon will be equally binding upon all parties as if included in the original plans and specifications.

BIDDER MUST ENTER THE NUMBER OF THIS ADDENDUM ON HIS PROPOSAL SHEET

THE FOLLOWING ITEMS ARE GENERAL INFORMATION:

AD-1, ITEM 1:

In reference to the mandatory Pre-Bid Meeting held on Tuesday, April 3, 2012, the following companies were in attendance:

Boone Brothers Roofing
C.W. Suter
CSM
Denison Drywall / Contracting
Edsen Electric
Haselhoff Construction
Henkel Construction
Holstein Electric
Holtze Construction Company
Interstate Mechanical Corporation
L & L Builders
Lundell Construction Company
MetroElectric
Midwestern Mechanical, Inc.
N.W. Glass
Prairie Sons, Inc.
R.H. Mullen Company
Steve Tate Construction

THE FOLLOWING ITEMS ARE APPLICABLE TO THE SPECIFICATIONS:

AD-1, ITEM 2:

The following are approved manufacturers for the products listed:

Section 04200 - Unit Masonry:	Precast Stone Trim; MarcStone and Edwards Cast Stone
Section 07223 - Cavity Wall Insulation:	Diversifoam; CertiFoam 25
Section 07224 - Building Insulation:	Diversifoam CertiFoam 40
section 07841 - Firestop Systems	Specified Technologies, Inc.
Section 09110 - Steel Stud Systems:	Metal-Lite
Section 10100 - Chalkboards and Tackboards:	Newline
Section 10500 - Metal Lockers:	WEC Manufacturing and Republic Storage Lockers

AD-1, ITEM 3:

In reference to the Table of Contents, Page TC-2, under Division 03 - Concrete, add 03410 - Structural Precast Concrete. (NOTE: This section is in the specifications, but inadvertently left off the Table of Contents.)

AD-1, ITEM 4:

In reference to specification Section 07530 - Flexible Sheet Roofing System, make the following changes:

On Page 07530-5, delete Molded Polystyrene Board Insulation in it's entirety and replace with Polyisocyanurate Board Insulation: ASTM C 1289, Type II, Class I, Grade 2; felt or glass fiber mat faces on both major surfaces, similar to Firestone ISO 95t."

NOTE: Extruded polystyrene board may be used but only with a proper cover board such as Dens Deck. this is at contractor's option.

AD-1, ITEM 5:

In reference to specification Section 10100 - Chalkboards and Tackboards, Page 10100-4, under the Schedule of Tack Surfaces, add the following:

Room No.	Size	Name	Location
1819	1'-8" H x 6'-7" L	Doctor Dictation	North Wall
1819	1'-8" H x 6'-7" L	Doctor Dictation	East Wall

NOTE: Tack surfaces to be mounted between countertop and wall cabinets. Provide painted 3/4" square wood edge at exposed tack surfaces.

1834	2'-0" H x 16'-2" L	EMT	East Wall
------	--------------------	-----	-----------

NOTE: Mount between countertop and wall cabinets.

AD-1, ITEM 6:

In reference to specification Section 15130 - HVAC: Pipe Material, Quality Specification, Joints, and Fittings, replace Chilled Water Piping Above Ground for black steel pipe with the following:

Pipe material: Black steel pipe.

Pipe class: Schedule 40

Pipe specifications: ASTM A120, or ASTM A53 where coiling or bending is required.

Fittings:

- 1) Cast iron threaded 125 lb.
- 2) Malleable iron threaded 150 lb.
- 3) Cast iron flanged 125 lb.
- 4) Steel flanges and welding fittings.
- 5) Mechanical grooved steel fittings.

Joints:

- 1) Threaded for 2" or smaller pipe.
- 2) Welded or flanged for 2 1/2" or larger pipe.
- 3) Victaulic "Zero-flex" groove type coupling for 2-1/2" and larger pipe only.

AD-1, ITEM 7:

In reference to the **Room Finish Schedule**, schedule is attached.

THE FOLLOWING ITEMS ARE APPLICABLE TO THE DRAWINGS:

AD-1, ITEM 8:

In reference to drawing **Sheet C-102 – Site Grading Plan**, See supplemental drawing C-102.1 showing addition to dry-stack retaining near new driveway at existing garage.

AD-1, ITEM 9:

In reference to drawing **Sheet S-501**, Detail 14, "Concrete Column and Pad Detail," add note reading "24-inch round concrete column to be formed with Sonotube forms to match concrete columns on existing hospital."

AD-1, ITEM 10:

In reference to drawing **Sheet A-105**, add note reading "Remove and re-install LAP ceiling for mechanical piping run in Corridors 1511, 1512, 1320, 1322, 1323, and E1159. new piping installed in Corridor Section 1512 is to run above existing 2-hour barrier. Penetrations in existing 2-hour barrier are to be patched and sealed to meet 2-hour fire rating."

AD-1, ITEM 11:

In reference to drawing **Sheet A-106**, delete reference to providing 6 mil poly vapor barrier on pre-cast roof over new Ambulance Garage.

AD-1, ITEM 12:

In reference to drawing **Sheet A-403**, Detail D-5/A-403, "Cove Light Detail - Emergency Department Waiting" change 2'x 2' lay-in acoustical ceiling note above light cove to read "GWB Ceiling."

AD-1, ITEM 13:

In reference to drawing **Sheet A-601**, Door and Frame Schedule, at Door 1825E, change hardware set number from HW-4 to HW-11.

AD-1, ITEM 14:

In reference to drawing Sheet P-101, see attached Supplemental Drawing P-101.1.

AD-1, ITEM 15:

In reference to drawing Sheet M-101, see attached Supplemental Drawing M-101.1.

AD-1, ITEM 16:

In reference to drawing Sheet M-103, see attached Supplemental Drawing M-103.1.

AD-1, ITEM 17:

In reference to drawing Sheet E-102 – North First Floor Electrical Demolition Plan, See supplemental drawing E-102.1 for additional electrical work.

AD-1, ITEM 18:

In reference to drawing Sheet E-104 – North First Floor Electrical Power Plan, See supplemental drawing E-104.1 for AHU-8 location clarification.

AD-1, ITEM 19:

In reference to drawing Sheet E-105 – North First Floor Electrical Systems Plan, Add Electrical General Note 28 to drawings; “Electrical Contractor to provide and install all low voltage wiring with the exception of low voltage wire mentioned in General Note 10 on this sheet.”

END AD-1

CHEROKEE REGIONAL MEDICAL CENTER_E.D. ADDITION AND SURGERY/C.S. REMODEL

ROOM FINISH SCHEDULE

Room Number	Room Name	Floor	Wall Base	North	East	South	West	Ceiling	Ceiling Height	Counters	Cabinets	Notes
1186	SUB STERILE	RTZ-1	IB-RTZ	PT-1/ SGE	PT-1/ SGE	PT-1/ SGE	PT-1/ SGE	PT-7/ SOFFIT PT-5	9'-0"	STAINLESS	PL-4	
1187	OPERATING ROOM	RTZ-1/2	IB-RTZ	CT-1	CT-1	CT-1	CT-1	PT-7	10'-0"	STAINLESS	STAINLESS	
1188	OPERATING ROOM	RTZ-1/2	IB-RTZ	CT-1	CT-1	CT-1	CT-1	PT-7	10'-0"	STAINLESS	STAINLESS	
1189	SCRUB ALCOVE	RSF-1	RB-1	PT-1/ SGE	PT-1/ SGE	PT-3/ SGE	PT-1/ SGE	PT-7	8'-6"	--	--	1
1190	STERILE CORRIDOR	RSF-1/2	RB-1	PT-1/ SGE	PT-1/ SGE	PT-1/ SGE	PT-1/ SGE	LAP/ PT-7	9'-0"	--	--	
1191	SURGERY STORAGE	RSF-1	RB-1	PT-1/ SGE	PT-1/ SGE	PT-1/ SGE	PT-1/ SGE	LAP	9'-0"	--	--	
1192	SOILED	RSF-1	RB-1	PT-1/ SGE	PT-1/ SGE	PT-1/ SGE	PT-1/ SGE	PT-7/ SOFFIT PT-5	9'-0"	PL-3	PL-1	
1193	JANITOR'S CLOSET	VCT-1	RB-1	PT-1/ SGE	PT-1/ SGE	PT-1/ SGE	PT-1/ SGE	PT-7	9'-0"	--	--	
1194	C-ARM ANTE	RSF-1	RB-1	PT-1/ SGE	PT-1/ SGE	PT-1/ SGE	PT-1/ SGE	LAP	9'-0"			
1195	PROCEDURE ENDOSCOPY	RSF-1/2	IB- 1/2	PT-1/ SGE	PT-1/ SGE	PT-1/ SGE	PT-1/ SGE	LAP/ SOFFIT PT- 5	10'-0"	STAINLESS	PL-5	3
1196	SCOPE CLEAN	RSF-1/2	IB- 1/2	PT-1/ SGE	PT-1/ SGE	PT-1/ SGE	PT-1/ SGE	LAP/ SOFFIT PT- 5	9'-0"	STAINLESS	PL-5	
1197	TOILET	RSF-1	IB-1	CT-1/2/3 PT-1/ SGE	CT-1/2/3 PT-1/ SGE	CT-1/2/3 PT-1/ SGE	CT-1/2/3 PT-1/ SGE	PT-7	9'-0"	--	--	
1526	AMBUL. PRE-OP	RSF-1/2	RB-1	PT-1/ SGE	PT-3/ SGE	PT-1/ SGE	PT-1/ SGE	ME/PR		--	--	
1527	AMBUL. PRE-OP	RSF-1/2	RB-1	PT-1/ SGE	PT-3/ SGE	PT-1/ SGE	PT-3/ SGE	ME/PR		--	--	
1528	AMBUL. PRE-OP	RSF-1/2	RB-1	PT-1/ SGE	PT-3/ SGE	PT-1/ SGE	PT-3/ SGE	ME/PR		--	--	
1532	PASSAGE	RSF-1/2	RB-1	PT-1/ SGE	PT-1/ SGE	PT-1/ SGE	PT-1/ SGE	ME/PR/ SOFFIT PT-3		PL-2	PL-4	
1533	AMBUL. PRE-OP	RSF-1/2	RB-1	PT-1/ SGE	PT-3/ SGE	PT-1/ SGE	PT-3/ SGE	ME/PR		--	--	
1534	E.D. MANAGER OFFICE	CPT-2	RB-1	PT-2/ EGE	PT-2/ EGE	PT-2/ EGE	PT-6/ EGE	LAP/ PT-6	9'-0"	PL-2	PL-5	
1535	SURGERY DIRECTOR/STAFF OFFICE	CPT-2	RB-1	PT-2/ EGE	PT-2/EGE	PT-4/ EGE	PT-2/ EGE	LAP/ PT-4	9'-0"	PL-2	PL-5	

Room Number	Room Name	Floor	Wall Base	North	East	South	West	Ceiling	Ceiling Height	Counters	Cabinets	Notes
1521	ENTRY	EXST	ME/PR	ME/PR	ME/PR	ME/PR	ME/PR	ME/PR		--	--	
1543	STORAGE	RSF-1	RB-1	PT-1/ SGE	PT-1/ SGE	PT-1/ SGE	PT-1/ SGE	LAP	9'-0"	--	--	
1544	TANK STORAGE	RSF-1	RB-1	PT-1/ SGE	PT-1/ SGE	PT-1/ SGE	PT-1/ SGE	PT-7	9'-0"	--	--	
1545	CENTRAL STERILE	RSF-1	RB-1	PT-1/ SGE	PT-1/ SGE	PT-1/ SGE	PT-1/ SGE	LAP	9'-0"	--	--	
1545A	STERILIZER	RSF-1	RB-1	PT-1/ SGE	PT-1/ SGE	PT-1/ SGE	PT-1/ SGE	PT-7	8'-6"	--	--	
1546	STERILE WORK	RSF-1	RB-1	PT-1/ SGE	PT-1/ SGE	PT-1/ SGE	PT-1/ SGE	LAP/ SOFFIT PT-5	9'-0"	STAINLESS	PL-1	
1547	DECONTAM	RSF-1	RB-1	PT-1/ SGE	PT-1/ SGE	PT-4/ SGE	PT-1/ SGE	PT-7/ SOFFIT PT-5	9'-0"	PL-2	PL-1	
E1159	EXISTING CORRIDOR	ME/PR	ME/PR	ME/PR	ME/PR	ME/PR	ME/PR	ME/PR		--	--	
E1219	EXISTING CORRIDOR	PCT-1/2	PCTB-1	PT-2/ SGE	PT-2/ SGE	PT-2/ SGE	PT-2/ SGE	LAP/ PT-7	9'-0"	--	--	
E1322	EXISTING CORRIDOR	ME/PR	ME/PR	ME/PR	ME/PR	ME/PR	ME/PR	ME/PR		--	--	
1801	CLEAN STORAGE	RSF-1	RB-1	PT-1/ SGE	PT-1/ SGE	PT-1/ SGE	PT-1/ SGE	LAP/ SOFFIT PT-3	9'-0"	PL-2	PL-1	
1802	JANITOR CLOSET	VCT-1	RB-1	PT-1/ SGE	PT-1/ SGE	PT-1/ SGE	PT-1/ SGE	PT-7	9'-0"	--	--	
1803	O.B. EXAM	RSF-1	RB-1	PT-1/ SGE	PT-1/ SGE	PT-3/ SGE	PT-1/ SGE	LAP/ SOFFIT PT-3	9'-0"	PL-2	PL-1	
1804	TOILET	RSF-1	IB-1	CT-1/2/3 PT-1/ SGE	CT-1/2/3 PT-1/ SGE	CT-1/2/3 PT-1/ SGE	CT-1/2/3 PT-1/ SGE	PT-7	9'-0"	--	--	
1805	ANTE.	ME/PR	ME/PR	ME/PR	ME/PR	ME/PR	ME/PR	PT-7	8'-6"	--	--	
1806	EXAM 2	RSF-1	RB-1	PT-1/ SGE	PT-1/ SGE	PT-3/ SGE	PT-1/ SGE	LAP/ SOFFIT PT-3	9'-0"	PL-2	PL-1	
1807	EXAM 3	RSF-1	RB-1	PT-1/ SGE	PT-1/ SGE	PT-1/ SGE	PT-3/ SGE	LAP/ SOFFIT PT-3	9'-0"	PL-2	PL-1	
1808	EXAM 4	RSF-1	RB-1	PT-1/ SGE	PT-1/ SGE	PT-1/ SGE	PT-3/ SGE	LAP/ SOFFIT PT-3	9'-0"	PL-2	PL-1	
1809	CORRIDOR	RSF-1/2	RB-1	PT-1/ SGE	PT-1/ SGE	PT-1/ SGE	PT-3/ SGE	LAP	9'-0"	--	--	
1810	PASSAGE	RSF-1/2	RB-1	PT-1/ SGE	PT-1/ SGE	PT-1/ SGE	--	LAP	9'-0"	--	--	
1811	ANTE.	PCT-1	PCTB-1	PT-2/ SGE	--	PT-2/ SGE	PT-2/ SGE	PT-7	8'-6"	--	--	

Room Number	Room Name	Floor	Wall Base	North	East	South	West	Ceiling	Ceiling Height	Counters	Cabinets	Notes
1812	OFFICE/STAFF	CPT-2	RB-1	PT-5/ EGE	PT-2/ EGE	PT-2/ EGE	PT-2/ EGE	LAP/ SOFFIT PT-5	9'-0"	PL-2	PL-4	
1813	EQUIPMENT	RSF-1	RB-1	PT-1/ SGE	PT-1/ SGE	PT-1/ SGE	PT-1/ SGE	LAP	9'-0"	--	--	
1814	SOILED	RSF-1	RB-1	PT-1/ SGE	PT-1/ SGE	PT-1/ SGE	PT-1/ SGE	PT-7/ SOFFIT PT-1	9'-0"	PL-3	PL-1	
1815	PATIENT TOILET	RSF-1	IB-1	CT-1/2/3 PT-1/ SGE	CT-1/2/3 PT-1/ SGE	CT-1/2/3 PT-1/ SGE	CT-1/2/3 PT-1/ SGE	PT-7	9'-0"	--	--	
1816	PASSAGE	RSF-1	RB-1	--	PT-1/ SGE	PT-1/ SGE	--	LAP/ SOFFIT PT-5	9'-0"	--	--	2, 3
1817	PASSAGE	CPT-2	RB-1	PT-1/ SGE	--	PT-1/ SGE	--	LAP	9'-0"	--	--	
1818	REFRESH	RSF-1	RB-1	PT-4/ SGE	PT-1/ SGE	--	PT-1/ SGE	LAP/ SOFFIT PT-4	9'-0"	PL-2	PL-1	
1819	DR. DICT.	CPT-2	RB-1	PT-1/ SGE	PT-1/ SGE	PT-1/ SGE	PT-1/ SGE	LAP/ SOFFIT PT-5	9'-0"	PL-2	PL-1	
1820	NURSE STATION	RSF-1	RB-1	PT-1/ SGE	PT-1/ SGE	PT-1/ SGE	PT-1/ SGE	LAP/ SOFFIT PT-5	9'-0"	PL-2	PL-1	2, 3, 4
1821	CORRIDOR	RSF-1/2	RB-1	PT-1/ SGE	PT-1/ SGE	PT-1/ SGE	PT-3/ SGE	LAP/ SOFFIT PT-5	9'-0"	--	--	4
1822	TRAUMA	RSF-1/2	IB-1/2	PT-1/ SGE	PT-1/ SGE	PT-3/ SGE	PT-1/ SGE	PT-7/ SOFFIT PT-3	9'-6"	STAINLESS	PL-4	
1823	TRAUMA	RSF-1/2	IB-1/2	PT-3/ SGE	PT-1/ SGE	PT-1/ SGE	PT-1/ SGE	PT-7/ SOFFIT PT-3	9'-6"	STAINLESS	PL-4	
1824	ENTRY	CPT-3	RB-1	PT-1/ SGE	PT-1/ SGE	PT-1/ SGE	PT-1/ SGE	PT-7	9'-0"	--	--	
1825	AMBULANCE GARAGE	CONC	--	--	--	--	--	--		--	--	
1826	DECON. SHOWER	CONC	--	--	--	--	--	--		--	--	
1827	DECON.	RSF-1	RB-1	PT-1/ SGE	PT-1/ SGE	PT-1/ SGE	PT-1/ SGE	PT-7	9'-0"	--	--	
1828	ISOLATION/TRIAGE	RSF-1/2	RB-1	PT-3/ SGE	PT-1/ SGE	PT-1/ SGE	PT-1/ SGE	LAP	9'-0"	--	--	
1829	TOILET	RSF-1	IB-1	CT-1/2/3 PT-1/ SGE	CT-1/2/3 PT-1/ SGE	CT-1/2/3 PT-1/ SGE	CT-1/2/3 PT-1/ SGE	PT-7	9'-0"	--	--	

Room Number	Room Name	Floor	Wall Base	North	East	South	West	Ceiling	Ceiling Height	Counters	Cabinets	Notes
1830	ANTE.	RSF-1/2	RB-1	PT-3/ SGE	PT-1/ SGE	PT-1/ SGE	PT-1/ SGE	LAP/ SOFFIT PT-3	9'-0"	PL-2	PL-1	
1831	CORRIDOR	RSF-1/2	RB-1	PT-1/ SGE	PT-1/ SGE	PT-1/ SGE	PT-3/ SGE	LAP	9'-0"	--	--	
1832	PORT. XRAY	RSF-1/2	RB-1	--	PT-1/ SGE	PT-1/ SGE	PT-1/ SGE	LAP	9'-0"	--	--	
1833	STAFF TOILET	RSF-1	IB-1	CT-1/2/3 PT-1/ SGE	CT-1/2/3 PT-1/ SGE	CT-1/2/3 PT-1/ SGE	CT-1/2/3 PT-1/ SGE	PT-7	9'-0"	--	--	
1834	E.M.T'S	CPT-2	RB-1	PT-1- SGE	PT-5/ SGE	PT-1/ SGE	PT-1/ SGE	SKYLIGHT SOFFIT PT-5		PL-2	PL-1	
1835	ED WAITING	CPT-1	RB-1	PT-2/ SGE	PT-2/ SGE	PT-4/ SGE	PT-2/ SGE	PT-7/ SOFFIT PT-6	9'-6"	SS-1	PL-5	5, 6
1836	PASSAGE	CPT-2	RB-1	PT-2/ SGE	PT-2/ SGE	PT-2/ SGE	PT-4/ SGE	SKYLIGHT SOFFIT PT-4		--	--	
1837	W.C. STORAGE	CPT-2	RB-1	PT-2/ SGE	PT-2/ SGE	PT-2/ SGE	PT-4/ SGE	PT-7/ SOFFIT PT-4	8'-6"	--	--	7
1838	ADMIT.	CPT-2	RB-1	PT-2/ SGE	PT-2/ SGE	PT-2/ SGE	PT-4/ SGE	LAP/ SOFFIT PT-4	9'-0"	SS-1	PL-5	4
1839	ADMIT.	CPT-2	RB-1	PT-2/ SGE	PT-2/ SGE	PT-2/ SGE	--	LAP/ SOFFIT PT-4	9'-0"	SS-1	PL-5	4
1840	SWITCH BOARD	CPT-2	RB-1	PT-2/ SGE	PT-2/ SGE	PT-2/ SGE	--	LAP/ SOFFIT PT-4	9'-0"	SS-1	PL-5	
1841	CORRIDOR	PCT-1	PCTB-1	PT-2/ SGE	PT-2/ SGE	PT-2/ SGE	PT-2/ SGE	LAP/ SOFFIT PT-6	10'-0"	--	--	
1842	ENTRY VESTIBULE	CPT-3	RB-1	PT-2/ SGE	PT-2/ SGE	PT-2/ SGE	PT-2/ SGE	PT-7	10'-0"	--	--	
1843	OUTPATIENT WAITING	CPT-1	PCTB-1 / RB-1	PT-2/ SGE	PT-2/ SGE	PT-2/ SGE	PT-2/ SGE	LAP/ SOFFIT PT-6	10'-0"	SS-1	PL-5	6, 8
1844	OUTPATIENT WAITING	CPT-1/ PCT-1	PCTB-1 / RB-1	PT-2/ SGE	PT-2/ SGE	PT-4/ SGE	PT-2/ SGE	LAP/ SOFFIT PT-6	9'-4"	SS-1	PL-5	6, 8

Room Number	Room Name	Floor	Wall Base	North	East	South	West	Ceiling	Ceiling Height	Counters	Cabinets	Notes
1845	ANTE.	PCT-1	PCTB-1	PT-2/ SGE	--	PT-2/ SGE	PT-2/ SGE	PT-6	8'-5-1/2"	--	--	
1846	TOILET	PCT-1	PCTB-1	CT-1/2/3 PT-1/ SGE	CT-1/2/3 PT-1/ SGE	CT-1/2/3 PT-1/ SGE	CT-1/2/3 PT-1/ SGE	PT-7	9'-0"	--	--	
1847	TOILET	PCT-1	PCTB-1	CT-1/2/3 PT-1/ SGE	CT-1/2/3 PT-1/ SGE	CT-1/2/3 PT-1/ SGE	CT-1/2/3 PT-1/ SGE	PT-7	9'-0"	--	--	

NOTES

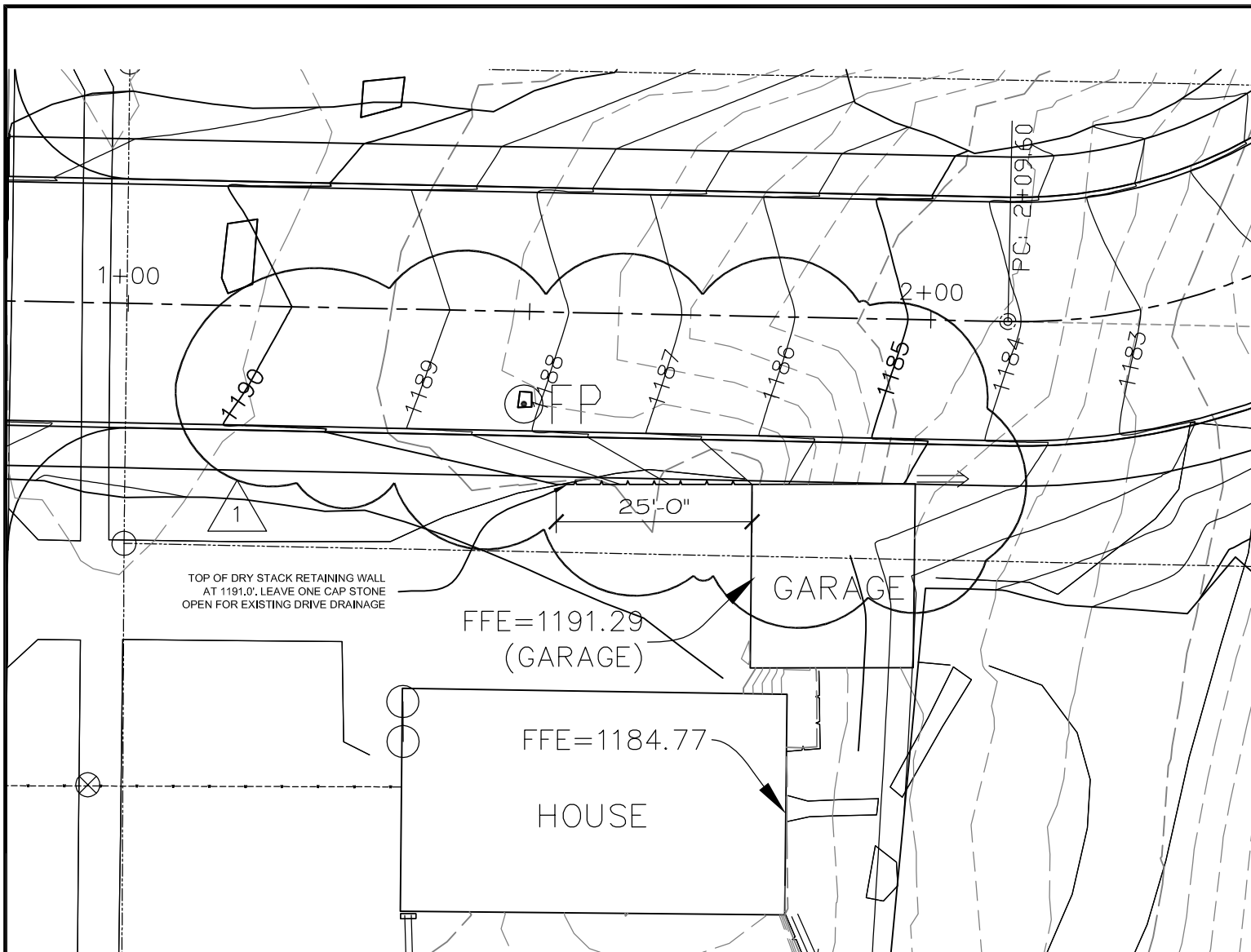
- 1 Columns shall be PT-1/ SGE.
- 2 Nurse Station case goods shall be PL-1, work surface shall be PL-2, transaction top shall be SS-1.
- 3 Center Wall shall be PT-5/ SGE.
- 4 Refer to Sheet A-211 for reveal and Plastic Laminate details and locations.
- 5 Outer soffit shall be PT-6. Ceiling shall be PT-7.
- 6 PL-5 pattern shall run vertically.
- 7 Columns shall be PT-2/ SGE.
- 8 Refer to Sheet I-101 for base PCTB-1 locations.

GENERAL REMARKS

- A See A-210 and A-211 sheets for tile pattern and extent.
- B Vertical and underside of soffit shall be painted. Finish type shall match walls.
- C Match existing finish, replace, patch or repair as required.
- D Verify all ceiling heights and locations with A-105 sheets
- E All transition strips, grout, heat welding rod colors shall be submitted to architect/designer for color selection.
- F Door Frames shall be PT-8/ SGE.
- G Window Sills shall be SS-2, Corian color Whisper.

FINISH KEY:

<u>CODE</u>	<u>DESCRIPTION</u>	<u>CODE</u>	<u>DESCRIPTION</u>
CONC	SEALED CONCRETE	PCT	PORCELAIN TILE
CPT	CARPET (MODULAR)	PCTB	PORCELAIN TILE BASE
CT	CERAMIC TILE	PL	PLASTIC LAMINATE
EGE	EGGSHELL ENAMEL	PT	PAINT
EXST	EXISTING FINISHES	RB	RUBBER BASE
FLE	FLAT ENAMEL	RSF	RESILIENT SHEET FLOORING
IB	INTEGRAL BASE (SELF-COVE FLOORING)	SGE	SEMI-GLOSS ENAMEL
LAP	LAY-IN ACOUSTICAL PANELS	SS	SOLID SURFACE
ME/PR	MATCH EXISTING/ PATCH & REPAIR	VCT	VINYL COMPOSITION TILE

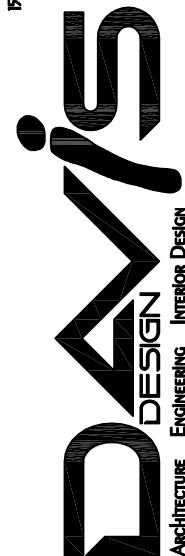


Site Grading Plan

SCALE: 1" = 20'-0"

VERMILION
15 EAST MAIN STREET, STE. 201
VERMILION SD 57069-3089
PHONE 605-624-1081

LINCOLN
211 NORTH 14TH STREET
LINCOLN NE 68508-6666
PHONE 402-476-9700
FAX 402-476-9722



Client Information

CherokeeRMC

300 Sioux Valley Drive
Cherokee, IA 51012

Project Information

E.D. Addition and Remodel

Issue Date	04-05-2012
Job #	11-0121
Drawn by:	acs
CADD file:	C-102

COPYRIGHT © DAVIS DESIGN ALL RIGHTS RESERVED

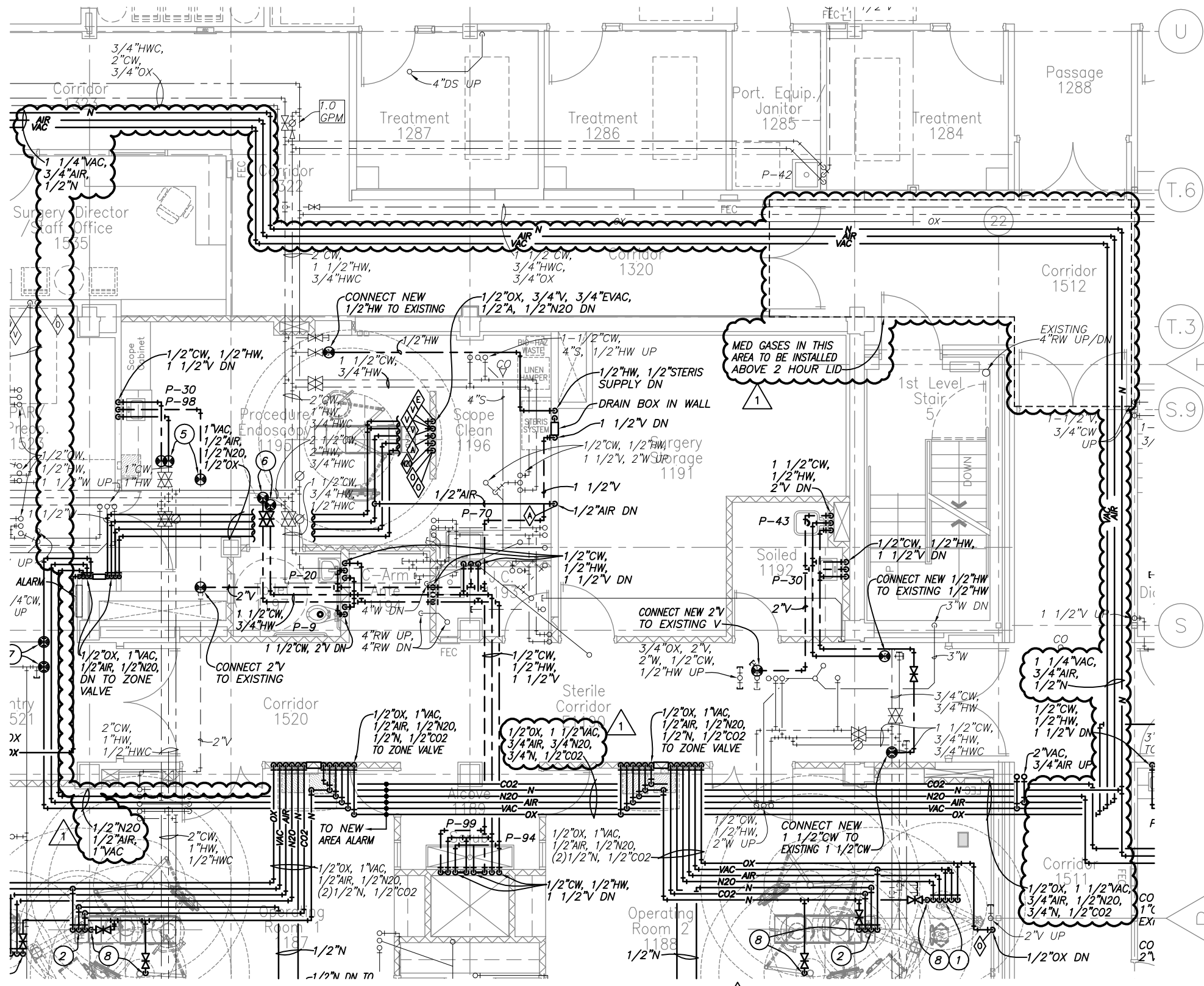
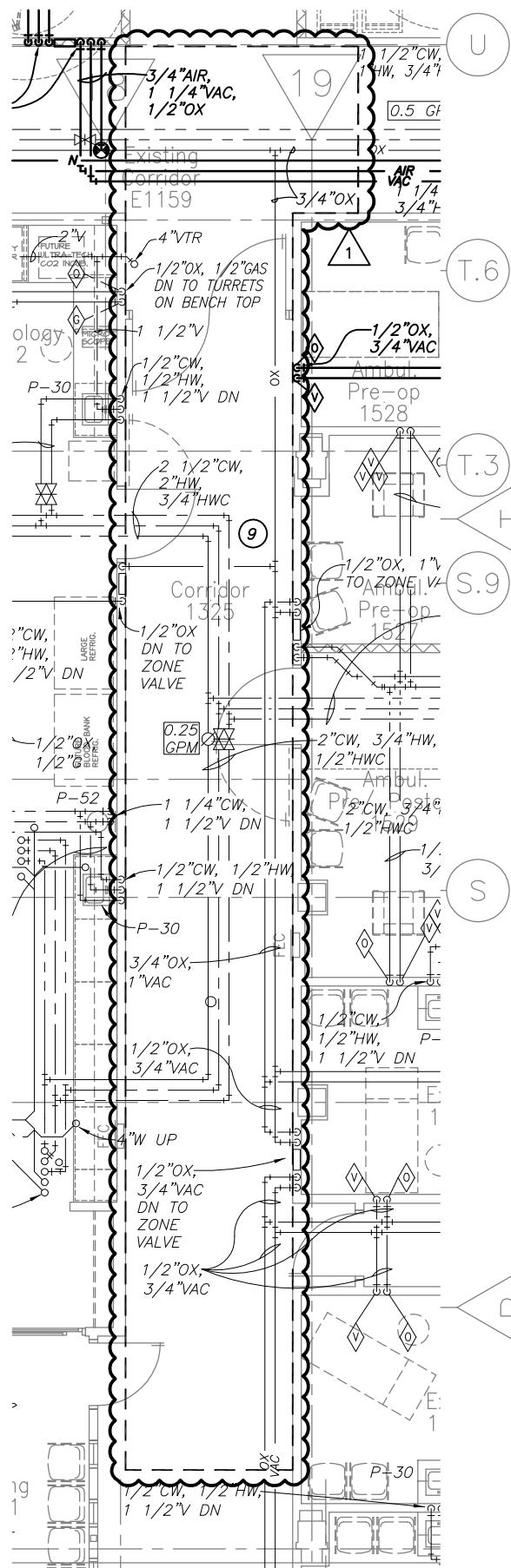
Drawing Title

Site Grading Plan - Garage Retaining Wall Addition

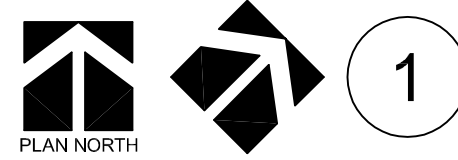


From Sheet: C-102 for CA use:

Drawing # C-102.1



1 EXISTING PLUMBING IN THIS AREA TO BE REWORKED FOR INSTALLATION OF NEW DUCTWORK.

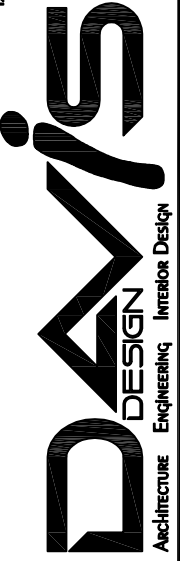


Partial First Floor Plumbing Plans

Scale: 1/8" = 1'-0"

VERMILION
15 East Main Street, Ste. 201
Vermillion SD 57069-7099
Phone 605-624-1081

LINCOLN
211 North 14th Street
Lincoln NE 68508-1846
Phone 402-478-9700
Fax 402-478-9722



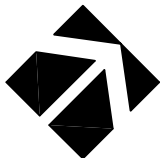
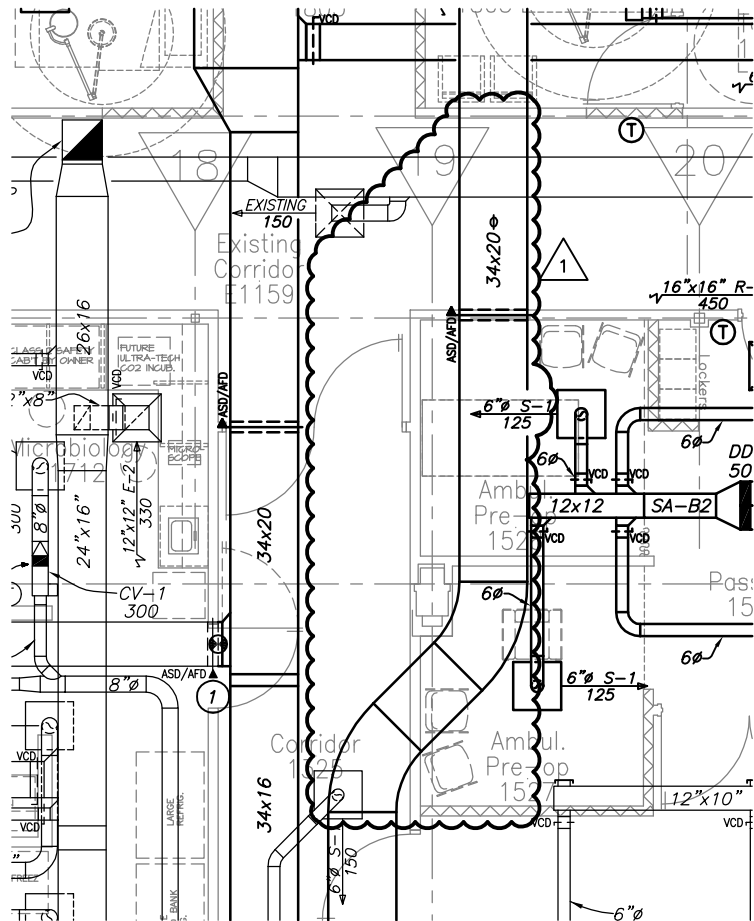
Client Information
CherokeeRMC

300 Sioux Valley Drive
Cherokee, IA 51012

Project Information
E.D. Addition and Remodel

Issue Date	04-05-2012
Job #	11-0212
Drawn by:	EMA
CADD file:	P-101.dwg
COPYRIGHT © DAVIS DESIGN ALL RIGHTS RESERVED	
Drawing Title Partial First Floor Plumbing Plans	
From Sheet:	for CA use:
P-101	
Drawing #	P-101.1

1 04/05/2012 ADDENDUM 1



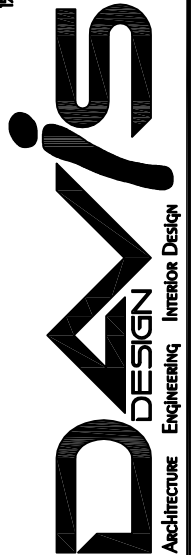
First Floor HVAC Plan

Scale: 1/8" = 1'-0"

1 04/05/2012 ADDENDUM 1

VERMILLION
 17 EAST MAIN STREET, STE. 201
 Vermillion SD 57059-2089
 Phone 605-624-1081

LINCOLN
 211 North 4th Street
 Lincoln NE 68508-6666
 Phone 402-476-9700
 Fax 402-476-9722



Client Information
CherokeeRMC

300 Sioux Valley Drive
 Cherokee, IA 51012

Project Information
E.D. Addition and Remodel

Issue Date	04-05-2012
Job #	11-0121
Drawn by:	EMA
CADD file:	M-101.dwg

COPYRIGHT © DAVIS DESIGN ALL RIGHTS RESERVED

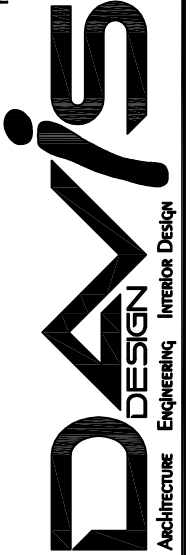
Drawing Title
 First Floor HVAC Plan

From Sheet: M-101 for CA use:

Drawing #
 M-101.1

VERMILLION
 15 EAST MAIN STREET, STE. 201
 VERMILLION SD 57069-3089
 PHONE 605-624-1081

LINCOLN
 211 NORTH 4TH STREET
 LINCOLN NE 68508-6666
 PHONE 402-476-9700
 FAX 402-476-9722



Client Information
CherokeeRMC

300 Sioux Valley Drive
 Cherokee, IA 51012

Project Information
E.D. Addition and Remodel

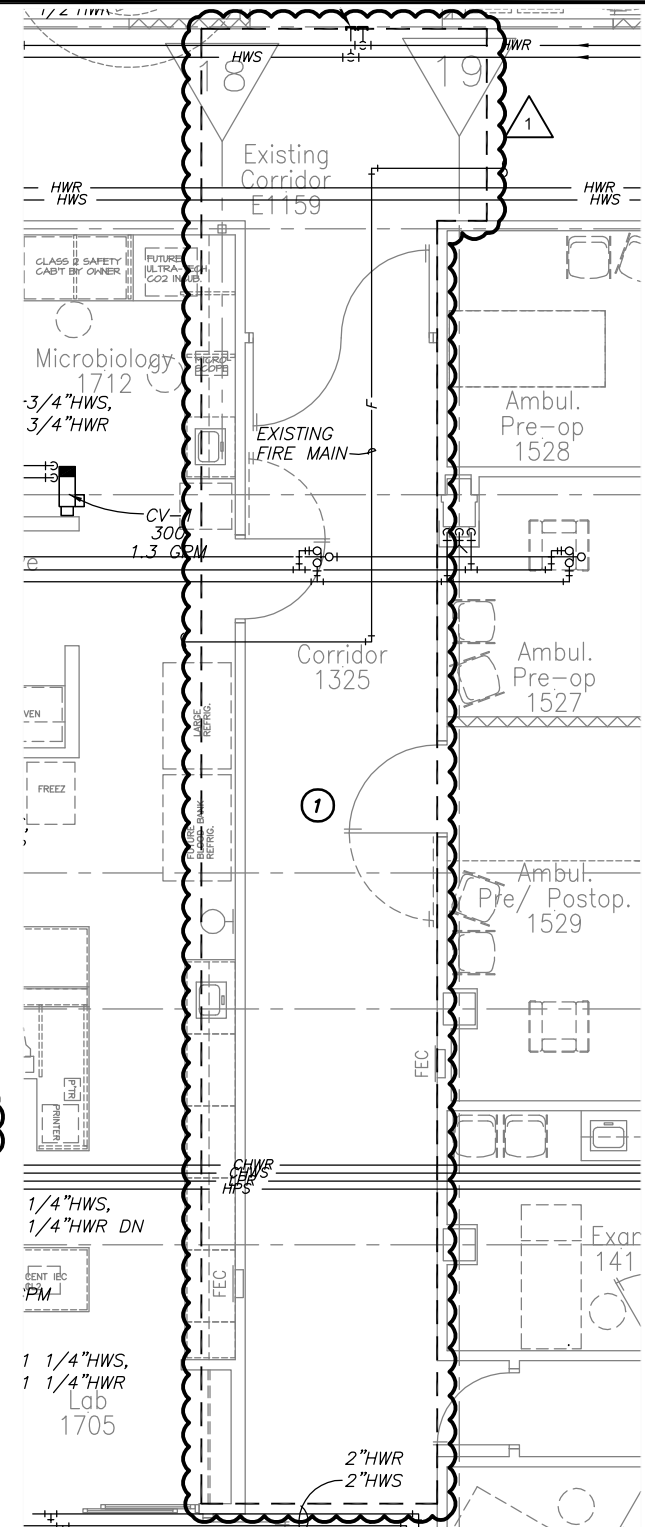
Issue Date	04-05-2012
Job #	11-0121
Drawn by:	EMA
CADD file:	M-103.dwg

COPYRIGHT © DAVIS DESIGN ALL RIGHTS RESERVED

Drawing Title
First Floor Mechanical Piping Plan

From Sheet: **M-103** for CA use:

Drawing #
M-103.1



1 EXISTING HYDRONIC PIPING AND FIRE SPRINKLER PIPING AND HEADS IN THIS AREA TO BE REWORKED FOR INSTALLATION OF NEW DUCTWORK.

First Floor Mech. Piping Plan

1

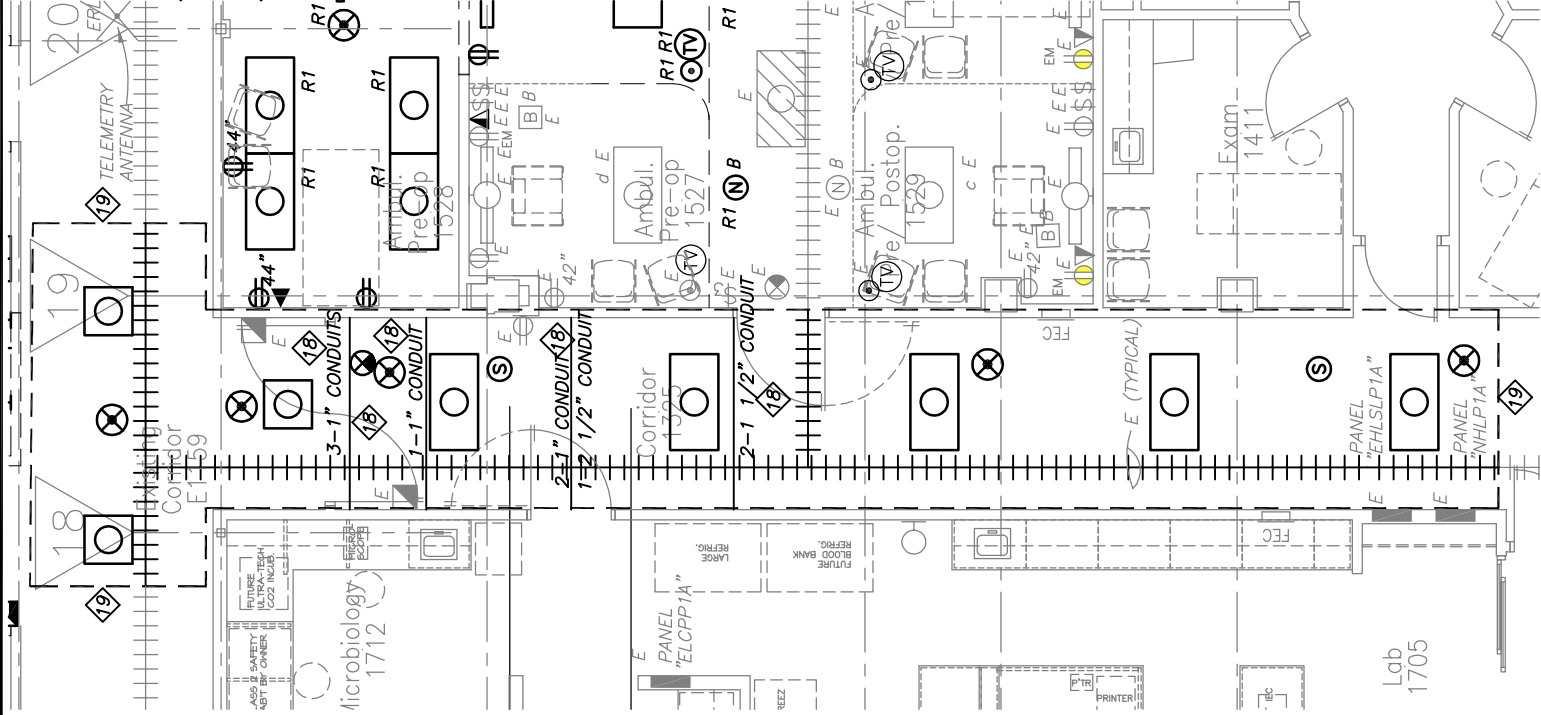
Scale: 1/8" = 1'-0"

1 04/05/2012 ADDENDUM 1

ELECTRICAL DEMOLITION PLAN KEYED NOTES:

18 COORDINATE WITH GENERAL AND MECHANICAL CONTRACTOR TO RELOCATE CONDUIT AND WIRE UP OR DOWN AS NEEDED FOR INSTALLATION OF NEW DUCT WORK IN AREA AS HIGHLIGHTED.

19 COORDINATE WITH GENERAL AND MECHANICAL CONTRACTOR TO SUSPEND OR REMOVE AND REINSTALL AS NEEDED ALL ELECTRICAL CEILING DEVICES IN CORRIDOR AREA AS SHOWN. ADJUST LOW VOLTAGE CABLE HOOKS AND WIRE AS NEEDED FOR INSTALLATION OF NEW DUCT WORK IN AREA AS HIGHLIGHTED.



Partial North First Floor Electrical Demolition Plan

Scale: 1/8" = 1'-0"

Issue Date	04-06-2012
Job #	11-0121
Drawn by:	DCT
CADD file:	
COPYRIGHT © DAVIS DESIGN ALL RIGHTS RESERVED	
Drawing Title	Corridor Electrical Work
From Sheet:	E-102 for CA use:
Drawing #	E-102.1

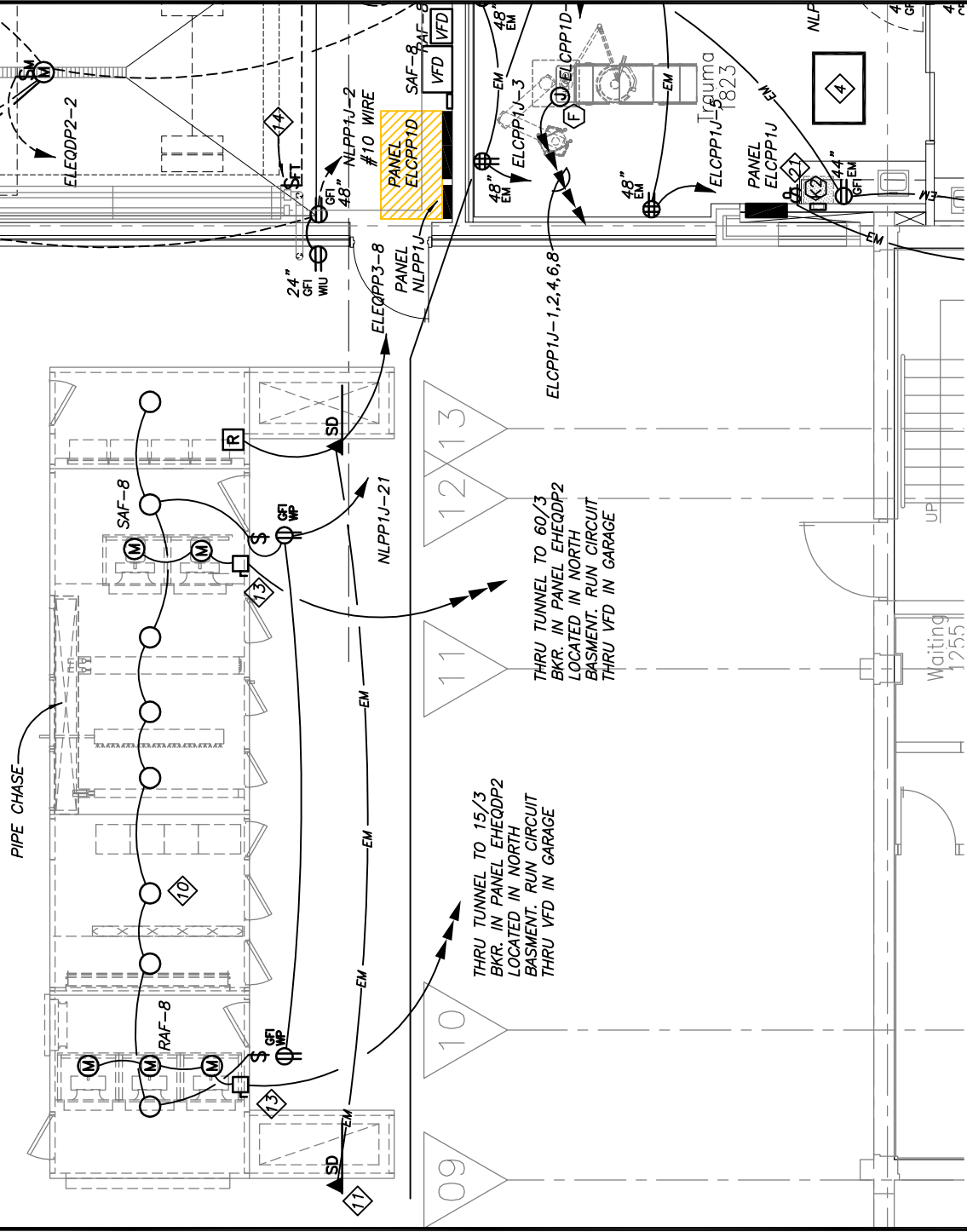
Client Information	CherokeeRMC
	300 Sioux Valley Drive Cherokee, IA 51012
Project Information	E.D. Addition and Remodel

Lincoln:
211 North 4th Street
Lincoln, NE 68508
Phone (402) 495-9700
FAX (402) 495-9722

Owaha:
426 South 16th Street
Owaha, NE 687
Phone (402) 544-4400
FAX (402) 544-6611

DAVIS DESIGN
Architecture Engineering Interior Design

AHU-8 LOCATED ON ROOF OF NEW ADDITION.
 LOCATION SHOWN AS IS FOR CLARITY OF OTHER
 ELECTRICAL IN ROOMS BELOW. SEE MECHANICAL
 SHEET M-101 FOR LOCATION ON ROOF.



Partial North First Floor Electrical Power Plan

Scale: 1/8" = 1'-0"

1

Client Information CherokeeRMC 300 Sioux Valley Drive Cherokee, IA 51012 Project Information E.D. Addition and Remodel	Issue Date	04/06/12
	Job #	11-0121
	Drawn by:	DCT
Lincoln: 211 North 14th Street Lincoln, NE 68508 Phone (402) 476-9700 FAX (402) 476-9722 Owaha: 426 South 149th Street Owaha, NE 687 Phone (402) 344-4400 FAX (402) 344-6811	CADD file:	COPYRIGHT © DAVIS DESIGN ALL RIGHTS RESERVED
	Drawing Title	AHU-8 Location Clarification
From Sheet:	E-104	for CA use:
	Drawing #	E-104.1