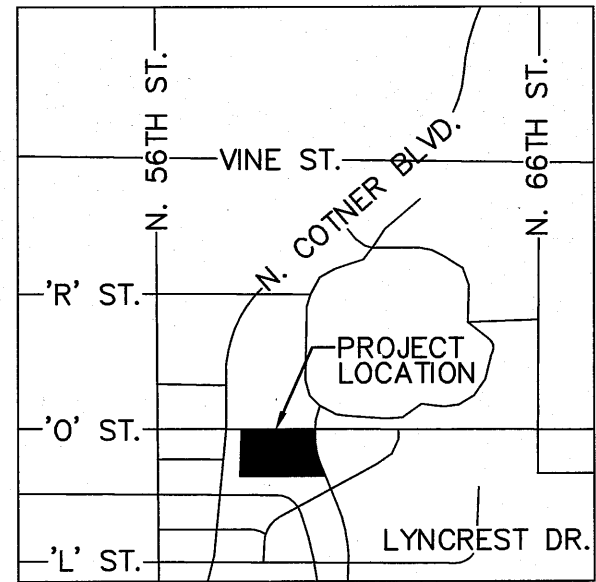


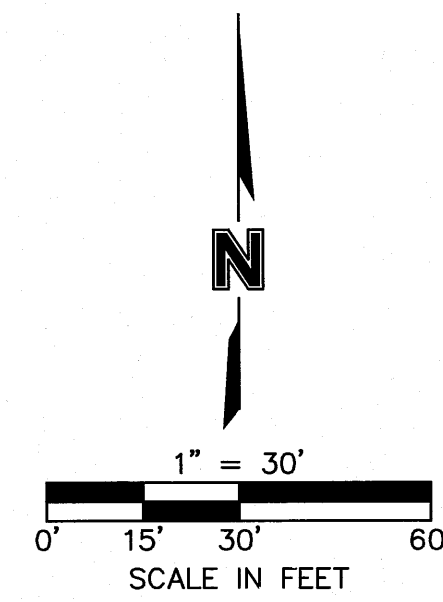
# LINCOLN PUBLIC SCHOOLS DISTRICT OFFICE MASS GRADING PLAN

### BENCHMARKS

1. CHISELED SQUARE ON TOP OF CURB, NW CORNER OF NORTH PARKING LOT.  
ELEV.=1264.84 (N.A.V.D. 1988)
2. CHISELED SQUARE ON TOP OF CURB, N. SIDE OF ENTRANCE TO LPS, IN CORNER OF PARKING MAGAZINE, E. OF INLET.  
ELEV.=1246.81 (N.A.V.D. 1988)

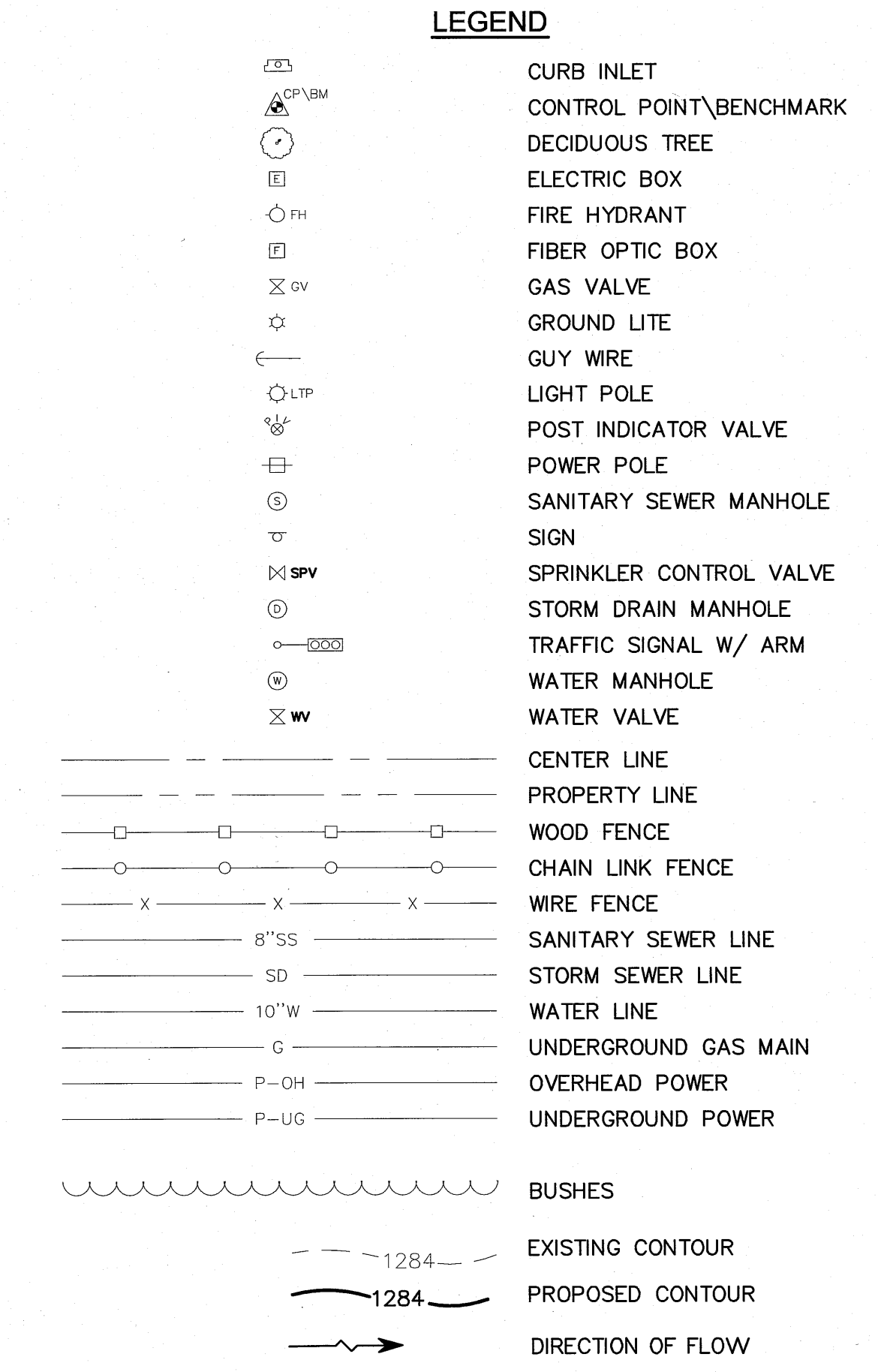
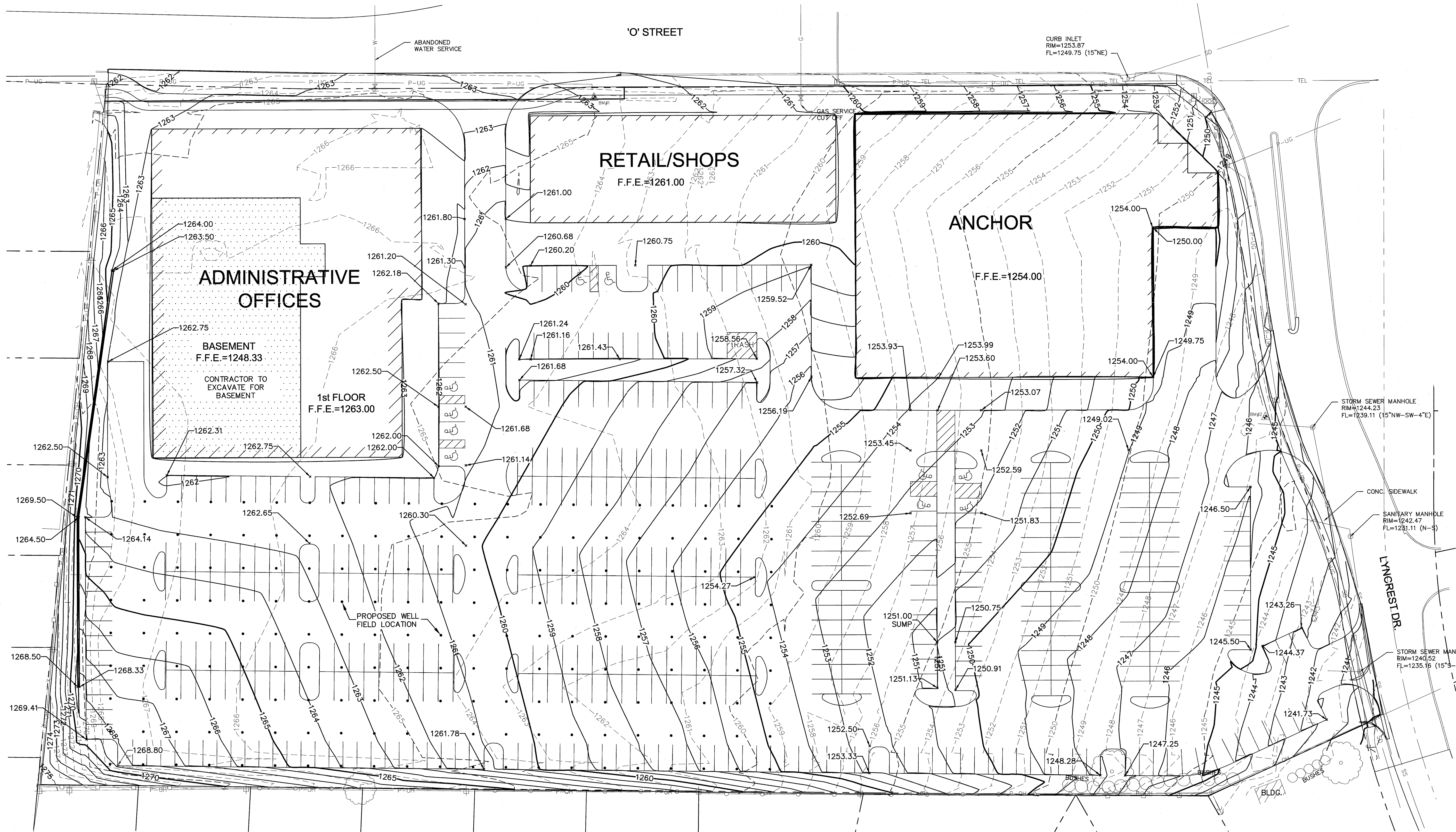


VICINITY MAP  
NOT TO SCALE



### GRADING NOTES

1. ALL APPLICABLE CHAPTERS AND SECTIONS FROM THE CITY OF LINCOLN STANDARD SPECIFICATIONS FOR MUNICIPAL CONSTRUCTION SHALL APPLY.
2. THE PROPOSED CONTOURS REPRESENT TOP OF SLAB, TOP OF CURB, OR TOP OF SIDEWALK IN PAVEMENT, IN ALL OTHER AREAS, THEY REPRESENT THE FINISHED GROUND SURFACE. THE CONTRACTOR SHALL LEAVE THE SITE AT SUBGRADE ELEVATIONS IN PARKING LOT AND BUILDING AREAS.
3. THE EXISTING AND PROPOSED FINISHED GROUND SURFACES ARE AVAILABLE ELECTRONICALLY FOR CONTRACTOR VERIFICATION VIA E-MAIL (IN AUTOCAD 2007 FORMAT). THE CONTRACTOR SHALL BE RESPONSIBLE FOR FIELD VERIFYING THE EXISTING GROUND SURFACE ELEVATIONS.
4. ALL LINES SHOWN REPRESENTING PAVEMENT ARE TO BACK OF CURB OR EDGE OF PAVEMENT, UNLESS OTHERWISE NOTED.
5. CONTRACTOR WILL BE HELD RESPONSIBLE FOR SETTLEMENT DUE TO IMPROPER COMPACTION.
6. THE CONTRACTOR IS RESPONSIBLE FOR PROTECTION OF ALL PROPERTY CORNERS.
7. THE CONTRACTOR SHALL NOTIFY THE ENGINEER IMMEDIATELY IF ANY GRADING WILL TAKE PLACE BEYOND THE PROPERTY LINE.
8. ALL HERBACEOUS VEGETATION SHALL BE REMOVED FROM WITHIN THE LIMITS OF GRADING PRIOR TO PLACEMENT OF FILL MATERIAL AND REDISTRIBUTED WITH THE TOPSOIL. A STRIPPING DEPTH OF 6" TO 10" IS ANTICIPATED ON THIS SITE.
9. SUFFICIENT TOPSOIL SHOULD BE SALVAGED AND STOCKPILED BY THE CONTRACTOR FOR RE-SREADING IN PERMANENT PLANTING AREAS, INCLUDING PARKING LOT ISLANDS AND GREEN SPACES. STOCKPILING AND RE-SREADING OF TOPSOIL IS NOT A SEPARATE BID ITEM, BUT SHALL BE CONSIDERED SUBSIDIARY TO THE SITE GRADING.
10. TOPSOIL SALVAGED AS PART OF THE EXCAVATION SHALL BE PLACED TO A MINIMUM DEPTH OF 8 INCHES OVER ALL AREAS DISTURBED BY THE WORK, EXCEPT IN AREAS TO BE PAVED. LARGE STONES, STICKS AND LUMPS SHALL BE REMOVED OR BROKEN UP, AND THE TOPSOIL SHALL BE LEVELED AND RAKED TO MATCH ADJACENT GRADES, READY FOR SEEDING. ANY ROCK OR SAND FROM PAVING ACTIVITIES SHALL BE REMOVED PRIOR TO PLACEMENT OF TOPSOIL. ALL EXCESS SOILS, NOT RE-SREAD WITHIN THE PROJECT LIMITS, SHALL BE REMOVED BY THE CONTRACTOR.
11. IF THERE ARE TREES ON THIS SITE THAT DO NOT SHOW UP ON THE PLANS, THE CONTRACTOR SHALL COORDINATE WITH OWNER'S REPRESENTATIVE OR ENGINEER FOR REMOVAL OR RELOCATION, IF REQUIRED.
12. THE CONTRACTOR SHALL FINISH GRADE SLOPES AS SHOWN NO STEEPER THAN ONE FOOT VERTICAL IN 3 FEET HORIZONTAL.
13. CONTRACTOR SHALL GRADE ALL LOW SPOTS TO DRAIN.
14. THE CONTRACTOR SHALL COORDINATE WITH THE OWNER AND THE ENGINEER METHODS TO VERIFY POSITIVE DRAINAGE OFF THE BUILDING PADS.
15. CONTRACTOR SHALL ASSURE POSITIVE DRAINAGE AWAY FROM THE BUILDING FOR ALL NATURAL AND PAVED AREAS.
16. CONTRACTOR SHALL GRADE TO CONTOURS SHOWN IN GREENSPACES.
17. AT THE COMPLETION OF GRADING, THE CONTRACTOR SHALL REMOVE ANY EXCESS EXCAVATION FROM THE SITE.
18. THE CONTRACTOR IS RESPONSIBLE FOR OBTAINING ALL NECESSARY PERMITS AND INSPECTIONS PRIOR TO COMMENCING CONSTRUCTION.
19. CONTRACTOR IS RESPONSIBLE FOR ALL TRAFFIC CONTROL AND SAFETY MEASURES, IF NECESSARY.
20. FULL TIME OBSERVATION AND TESTING BY OLSSON ASSOCIATES SHALL OCCUR TO MONITOR SITE STRIPPING, REMOVAL OF EXISTING FILL/BACKFILL IN THE BUILDING AREA (UNSUITABLE MATERIALS) AND PROOFROLLING AND FILL PLACEMENT.



OLSSON ASSOCIATES

1111 Lincoln Mall, Suite 111  
Lincoln, NE 68501-4609

TEL: 402.474.6511  
FAX: 402.474.6160

REV. NO.	DATE	REVISIONS DESCRIPTION
1	3-1-12	ASSEMBLY OF GRADE REVISIONS

MASS GRADING PLAN

LINCOLN PUBLIC SCHOOLS DISTRICT OFFICE

LINCOLN, NEBRASKA

REVISIONS

2012

drawn by: \_\_\_\_\_ 80

checked by: \_\_\_\_\_ 116

approved by: \_\_\_\_\_ 116

QA/QC by: \_\_\_\_\_ 116

project no.: 011-2489

drawing no.: ABC-DWG3

date: 2-28-12

SHEET

2 of 5

DWG: F:\Projects\011-2489\LDVP\Final\_Plans\12489\_Grading\_Plan.dwg  
 DATE: Mar 02, 2012 3:30pm  
 USER: sosterious  
 REF: 012489\_PBS3E property  
 TM: GERGEN\_PJ\_NE