

792-001-11

### ADDENDUM NO. 3

The Architect/ Engineer issues this addendum, applicable to the above named project, to all known Contractors before receipt of proposal.

This addendum includes Item Number 3-1 thru 3-2. This addendum item shall be fully incorporated into the Bidding/Contract Documents and have the same force and effect as though originally included.

The Bidder shall acknowledge receipt of this Addendum No. 3 on the Bid Proposal Form in the place provided.

#### MECHANICAL

##### Drawings

##### Item 3-1: Sheet M1.1 – Mechanical Fourth Floor HVAC Plan

Revise the common return air duct supplying F-1 & F-2 to be independent returns to each fan coil, reference SDM#01 for further information. Note: G-1 serving F-1 & F-2 has been changed to a 48x32 RA grille and there has been (2) 10"Ø OA ducts added to supply each of the independent returns on F-1 & F-2.

F-1 & F-2 are bottom return fan coil units and shall be mounted on a RA plenum base. The approximate base dimensions are 22" deep x 18" tall x 36" long, the mechanical contractor can the coordinate length as necessary to tie the RA ductwork down into the plenum base. All RA shall have ½" lining as specified. Provide vibration protection between the plenum base and fan coil unit bottom, this shall be a 1" foam gasket. Construct the RA plenum base in a manner that it is capable of supporting the fan coil weight (250lbs approximately).

#### ELECTRICAL

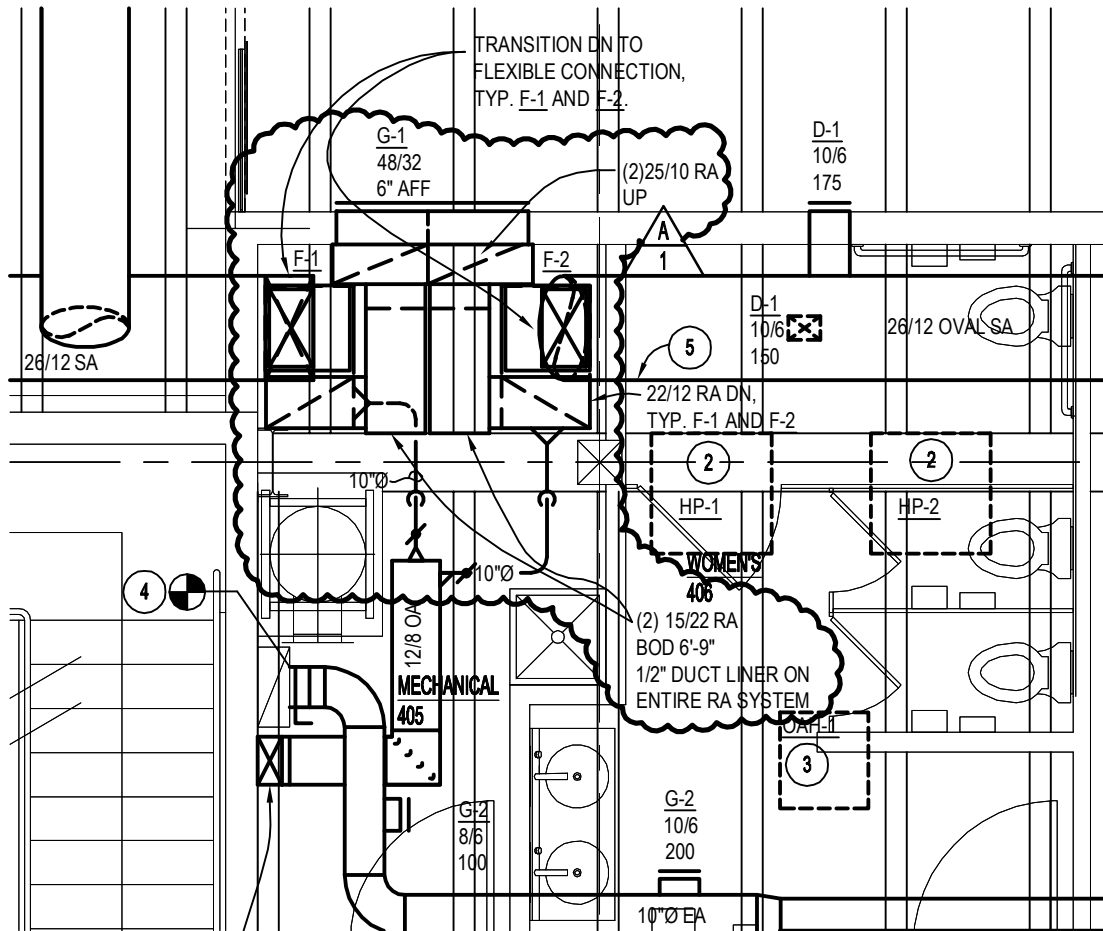
##### Item 3-2: Sheet E3.1 – Electrical Schedules, Partial One-Line Diagram, & Details

The following lighting fixtures have been reviewed and are included in the Contract Documents for bidding purposes. All fixtures, lamps, and ballasts are required to meet the specification requirements regardless of prior approval. Prior approval does not waive any requirements indicated on the drawings or the specifications. Some fluorescent fixtures require dimming or multiple levels of switching. The required number and types of ballasts shall be provided to meet the switching requirements shown on the drawings.

Type	Manufacturer and Catalog Number
A	Pinnacle: R9P-2T8-8-AC48ST-120-2C-W-DL60
B	Pinnacle: R9P-2T8-4-AC48ST-120-2C-W-DL60
N	Lithonia: UNS-2-32-MVOLT-GEB10RS-WG
P	Lithonia: CF11-2/32TRT-10AR-MVOLT-GEB10-DNA
Q	Lithonia: WC-2-32-MVOLT-GEB10RS
V	Lithonia: CA6-6MB-WM-DNA

Clarification to Addendum #2: The approved Cooper: BC-232-UNV-ER81-U is a type 'Q' fixture. The type designation is mislabeled in addendum #2.

END OF ADDENDUM NO. 3



# PARTIAL FOURTH FLOOR HVAC PLAN

SCALE: 1/4"=1'-0"



**The  
Clark  
Enersen  
Partners**

Architecture + Landscape Architecture + Engineering + Interiors  
 1010 Lincoln Mall, Suite 200 Lincoln, NE 68508-2883  
 402 477.9291 Fax 402 477.6542  
 Kansas City, MO Overland Park, KS www.clarkenersen.com

nebraskaGlobal Fourth Floor Interior Finish & Remodel  
 Lincoln, Nebraska  
 792-001-11

Addendum #3  
 Supplemental Drawing: SDM01  
 Revision of Sheet: M1.1  
 February 17, 2012