

ADDENDUM NO. 2

PROJECT NAME: Life Sciences Annex – North and East Wing Renovation
UNL PROJECT NUMBER: A090P025 & A090P026

CONSULTANT: The Clark Enersen Partners
1010 Lincoln Mall, Suite 200
Lincoln, NE 68508

DATE OF ISSUANCE: February 9, 2012
DATE OF BID OPENING: Thursday, February 16, 2012 @ 2:00 p.m. CDT

The bid documents dated January 10, 2012 for the above referenced project are amended by this addendum.

NOTICE: This Addendum is issued to all interested prospective bidders as an amendment to the project manual or other parts of the bidding (contract) documents for the above named project. Reference to this Addendum must be included in the Bid proposal. The information contained herein shall be fully incorporated into the contract documents as though originally included therein.

MODIFICATIONS TO THE SPECIFICATIONS:

Item # 1 Refer to the Specifications, Section 00 11 16 – Invitation to Bid:

Paragraph 2.A – Revise Closing Date and Time for Receipt of Bids to 16 February, 2012 2:00 PM CST.

Item # 2 Refer to the Specifications, Section 06 40 23 – Interior Architectural Woodwork:

Paragraph 2.2.1.1.1.1 – Add Hanex as an acceptable manufacturer. Color and style to be chosen from manufacturers standards.

Item # 3 Refer to the Specs, Sect 07 52 16 – SBS-Modified Bituminous Membrane Roofing:

- a. Paragraph 2.2.2 - At tapered insulation areas Polyisocyanurate Board Insulation is to be used in lieu of Perlite Board Insulation.
- b. Paragraph 3.3.3 - At metal deck areas, mechanically attach insulation boards per manufacturers standards in lieu of hot bitumen.

Item # 4 Refer to the Specifications, Section 07 95 01 – Expansion Joint Cover Assemblies:

Schedule for model numbers is as follows:

floor – to – floor	C/S Group PC-200 or approved equal
floor – to – wall	C/S Group PCW-200 or approved equal
wall – to – wall / ceiling - corner	C/S Group ASMC-200 or approved equal
wall – to – wall / ceiling – strait	C/S Group ASM-200 or approved equal
exterior wall – to – wall	C/S Group VF-200 or approved equal

Item # 5 Refer to the Specifications, Section 21 13 13 – Fire Protection System:

- a. Paragraph 1.7B: Replace the words “South Dakota” with the word “Nebraska” at the end of the paragraph.
- b. Paragraph 1.8A: Replace the words “South Dakota” with the word “Nebraska” at the end of the paragraph.

Item #6 Refer to the Specifications, Section 23 22 14 – Steam and Condensate Specialities

Note that Hoffman Specialty is an approved manufacturer for Float and Thermostatic Steam Traps (subject to strict compliance with all specified requirements).

Item #7 Refer to the Specifications, Section 23 37 00 – Air Outlets and Inlets

Note that MetalAire model HRD-CL critical environment diffusers are an approved equivalent (subject to strict compliance with all specified requirements) for D-2 in the DIFFUSER, REGISTER AND GRILLE SCHEDULE on Sheet M5.01.

Item # 8 Refer to the Specifications, Section 23 73 13 – Packaged Air Handling Units:

Delete paragraph 2.15.A and replace with:

Furnish and install, in “HEAT PIPE SUPPLY SECTION” and “HEAT PIPE EXHAUST SECTION” shown on plans and in accordance with schedules, low-leak face and bypass dampers with published leakage data certified under the AMCA certified ratings program. Low-leak dampers shall be rated less than 6.2 cfm per sq. ft. of area at 4-in. w.g. pressure difference through a 48” x 48” damper. Published leakage data shall include leakage information for all available damper sizes at pressure differences from 1 in w.g. through 13 in w.g. Low-leak dampers shall be fabricated of minimum 5” x 1” x .125” 6063T5 extruded aluminum hat channel with hat mounting flanges on both sides of the frame. Blades shall be airfoil type extruded aluminum (maximum 6” depth) with integral structural reinforcing tube running the full length of each blade. Blade edge seals shall be extruded vinyl double edge design with inflatable pocket that enables air pressure from either direction to assist in blade to blade seal. Blades shall be mechanically locked in extruded blade slots, yet be easily replaceable in the field.) Adhesive or clip-on type blade seals are not acceptable. Bearings shall be non-corrosive molded synthetic. Axles shall be square or hexagonal (round is not acceptable) to provide positive locking connection to blades and linkage. Linkage shall be concealed in the frame.

MODIFICATIONS TO THE DRAWINGS

Item # 9 Refer to the Sheet A1.31 – First Floor Plan Area ‘C’

See revised sheet.

Item # 10 Refer to the Sheet A6.11 – Room Finish Schedule

At detail 1/A6.11 add note: "LOCKER FILLER PANELS AND END PANELS TO BE CONTINUOUS WITH NO UNECESSARY HOLES OR AREAS OF ATTACHMENT. END PANELS REQUIRED AT VISIBLE ENDS OF LOCKERS"

Item # 11 Refer to Sheet M1.04 – Penthouse HVAC Plan Area 'A' and 'B'

- a. Reference GENERAL NOTE 4, the following boxes shall have a **24/12 FILTER HOUSING WITH 30/30 FILTER BETWEEN VAV BOX AND FLOOR SLAB**: VB-A13A, VB-A13B, VB-A22A, VB-A22C, VB-A24A, VB-A24C, VB-A25A, VB-A25C, VB-A31A, VB-A31C, VB-A32A, VB-A32C, VB-A32E, VB-A33D, VB-A33E, VB-A34A, VB-A34C, and VB-A34E in lieu of the 18/12 size noted.
- b. Reference PLAN NOTE 20, the following boxes shall have a BUBLE TIGHT DAMPER BETWEEN VAV BOX / FILTER BOX **OR** PENTHOUSE SLAB: VB-A33, VBR-A33A, VB-A33B, VBR-A33B, VB-A33C, VBR-A33C, VB-A33D, VBR-A33D, VB-A33E, VBR-A33E, and VB-A33F.
- c. VBR-A32B and VBR-A32D should have the PLAN NOTE1 in lieu PLAN NOTE 12.
- d. All filter housing dimensions noted in GENERAL NOTES or PLAN NOTES should be 24/12 in lieu of 18/12.

Item # 12 Refer to Sheet M1.05 – Penthouse HVAC Plan Area 'C'

- a. Reference GENERAL NOTE 3, the following boxes shall have a **24/12 FILTER HOUSING WITH 30/30 FILTER BETWEEN VAV BOX AND FLOOR SLAB**: VB-B08A, VB-B09, VB-B12, VB-B13 and VB-B15. **24/24 FILTER HOUSING WITH 30/30 FILTER BETWEEN VAV BOX AND FLOOR SLAB**: VB-B03A and VB-B04A.
- b. Delete GENERAL NOTE 3 and replace with "PROVIDE 24/12 OR 24/24 FILTER HOUSING WITH 30/30 FILTER BETWEEN VAV BOX AND FLOOR SLAB FOR ALL ANIMAL HOLDING AREA EXHAUST BOXES. See PLAN NOTES for sizes.
- c. All filter housing dimensions noted in PLAN NOTE 12 and PLAN NOTE 13 shall be 24/12 in lieu of 18/12.
- d. DELETE PLAN NOTE 3 and replace with "PROVIDE 24/24 FILTER HOUSING WITH 30/30 FILTER BETWEEN VAV BOX AND PENTHOUSE FLOOR SLAB. 20/18 EA DN THRU PENTHOUSE SLAB."

Item # 13 Refer to Sheet M4.01 – Mechanical Details

DETAIL 12, PENTHOUSE MECHANICAL COMPONENT RISER note referring to filter housing should be deleted and replaced with "24/12 OR 24/24 FILTER HOUSING, CAMFIL FARR 4P GLIDE/PACK OR EQUIVALENT WITH 30/30 FILTERS, SEE SPECIFICATION SECTION 233300 FOR MORE INFORMATION"

Item #14 Refer to Supplemental Drawings, Sheets SDM-001, SDPM-002, SDP-001 and 002

See attached supplemental drawings for mechanical work related to adding cabinet unit heater CUH-3 to Vestibule A15C and cabinet unit heater CUH-4 to Vestibule B02. Add the following to the Cabinet Unit Heater Schedule on sheet M5.01

Mark: CUH-3, CUH-4

Serves: Vestibule A15C / Vestibule B02

Fan Airflow (CFM): 206

Motor HP: 0.22

Coil Heating Capacity (MBH): 13.75

Water Flowrate (GPM): 0.5

Fluid Pressure Drop (FT.W.G.): 1.42

Electrical Requirements (Volts/Hz/Ph): 115/60/1

Manufacturer and Model: Trane Force Flo or Equivalent

Configuration: Vertical, Size 020 Cabinet, Front Bar Grille Inlet, Sloped Top Bar Grille
Outlet

Remarks: 1,2,4,5,7

Item # 15 Refer to Sheet E1.13 – First Floor Lighting Plan - Area “C”

Refer to Virus/Quarantine B07. Remove plan note #7 shown adjacent circuit name/number (STHE1-9) in this room. The light circuit for this room shall NOT be routed through the lighting relay panel 'LRPE'.

Item # 16 Refer to Sheet E2.12 – First Floor Power & Auxiliary Systems Plan-Area “B”

- a. Remove all electrical work shown associated with plan note #25 in Prep AA86. Work to be done as a part of another contract. Change plan note #25 to: NOT USED.
- b. Plan note #11 shall read: MOUNT **DEVICE** AND ASSOCIATED CONDUIT RECESSED IN.....
- c. Refer to Quarantine A13A. Provide a telecom junction box (as described in plan note #4) on the south wall, adjacent the receptacle with plan note #24. Route the 1” conduit adjacent to cable tray in Corridor A59.
- d. Refer to Quarantine A13B. Provide a telecom junction box (as described in plan note #4) on the north wall, adjacent the receptacle with plan note #24. Route the 1” conduit adjacent to cable tray in Corridor A59.
- e. Refer to plan note #18. Change note to read: ...of the holding facility. Provide 3/4” thick grade-C plywood terminal boards attached to **all walls**. Paint boards with ...
- f. Refer to Item #14. Add power connections to the Cabinet Unit Heater located in Vestibule A15C. Route to panel STLN1, circuit #45, to a 15A/1P breaker with 2-#12 & 1-#12 ground in 3/4” conduit throughout entire circuit. Electrical contractor (E.C.) shall provide thermal element disconnect switch mounted adjacent cabinet unit heater. Coordinate exact location with mechanical contractor.

Item # 17 Refer to Sheet E2.13 – First Floor Power & Auxiliary Systems Plan – Area “C”

- a. Plan note #10 shall read: MOUNT **DEVICE** AND ASSOCIATED CONDUIT RECESSED IN.....
- b. Provide a thermal element disconnect switch for Cabinet Unit Heater #1 (CUH-1) shown located in Stairs A39 as per the motor control schedule.
- c. Refer to Item #14. Add power connections to the Cabinet Unit Heater located in Vestibule B02. Route to panel STLE1, circuit #35, to a 15A/1P breaker with 2-#12 & 1-#12 ground in 3/4” conduit throughout entire circuit. Electrical contractor shall provide thermal element disconnect switch mounted adjacent cabinet unit heater. Coordinate exact location with mechanical contractor. Update Motor Control Schedule to reflect this change.

Item # 18 Refer to Sheet E2.21 – Penthouse Power & Auxiliary Systems Plan – Areas A & B

EF-5 and EF-6 each changed from 20HP to 25HP motors. Due to this change, change the exterior WP disconnect from a 60A/3P WP to a 100A/3P WP. See the One-Line diagram (Sheet E3.02) for breaker, wire and conduit changes. Change the HP ratings on the Motor Control Schedule (Sheet E4.01) to reflect this change.

Item # 19 Refer to Sheet E2.22 – Penthouse Power & Auxiliary Systems Plan – Area “C”

EF-8 and EF-9 shall be noted as EF-7 & EF-8 respectively. EF-7 & EF-8 each changed from 10HP to 15HP motors. Due to this change, change the exterior WP disconnect from a 30A/3P WP to a 60A/3P WP. Change each breaker size for EF-7 & EF-8 in panelboard ‘SEQPHE’ from a 25A/3P to a 40A/3P breaker and route each with 3-#10 & 1-#10 ground in 3/4” conduit throughout entire circuit. Change the names, breaker sizes and HP ratings on the Motor Control Schedule (Sheet E4.01) and Panelboard Schedule ‘SEQPHE’ (Sheet E4.03) to reflect this change.

Item # 20 Refer to Sheet E3.02 – Electrical One-Line Diagram (Continued)

EF-5 and EF-6 each changed from 20HP to 25HP motors. Due to this change, change each exterior WP disconnect from a 60A/3P WP to a 100A/3P WP. Change each breaker size for EF-5 & EF-6 in ‘SEQMDPN’ from 60A/3P to 70A/3P and change each feeder size to 3-#8 & 1-#8 ground in 3/4” conduit throughout entire circuit. Update HP rating adjacent to each exhaust fan.

Item # 21 Refer to Sheet E4.01 – Electrical Schedules

- a. Refer to all Lighting Relay Panel Schedules (LRPN1, LRPN2, LRPE): All circuits controlled with a timer switch or momentary contact switch shall be controlled by the lighting relay panel only and not by the building management system (BMS system).
- b. Clarification: E.C. shall install all timer & momentary contact switches, conduit and wire and connect to relay panels. All BMS system connections will be made by the UNL BSM, CG.
- c. All exterior light fixtures routed through the lighting relay panels shall be connected to the BMS system also.

Item # 22 Refer to Sheet E5.02 – Electrical Details

- a. Refer to the Lighting Control Panel Schematic Wiring Diagram: Add detail general note #7: All lighting control panels shall be BACnet compatible.
- b. Refer to the Lighting Control Panel Schematic Wiring Diagram: Add detail general note #8: Provide all necessary connections between each lighting relay panel and the building management system (BMS) for a fully integrated lighting control system. Fully coordinate connection requirements with the lighting control supplier and the owner's representatives.
- c. Refer to the BMS Interface Module Schematic Wiring Diagram: Delete this detail.
(Note: Making each lighting control panel BACnet compatible replaces the need for this detail.)

GENERAL

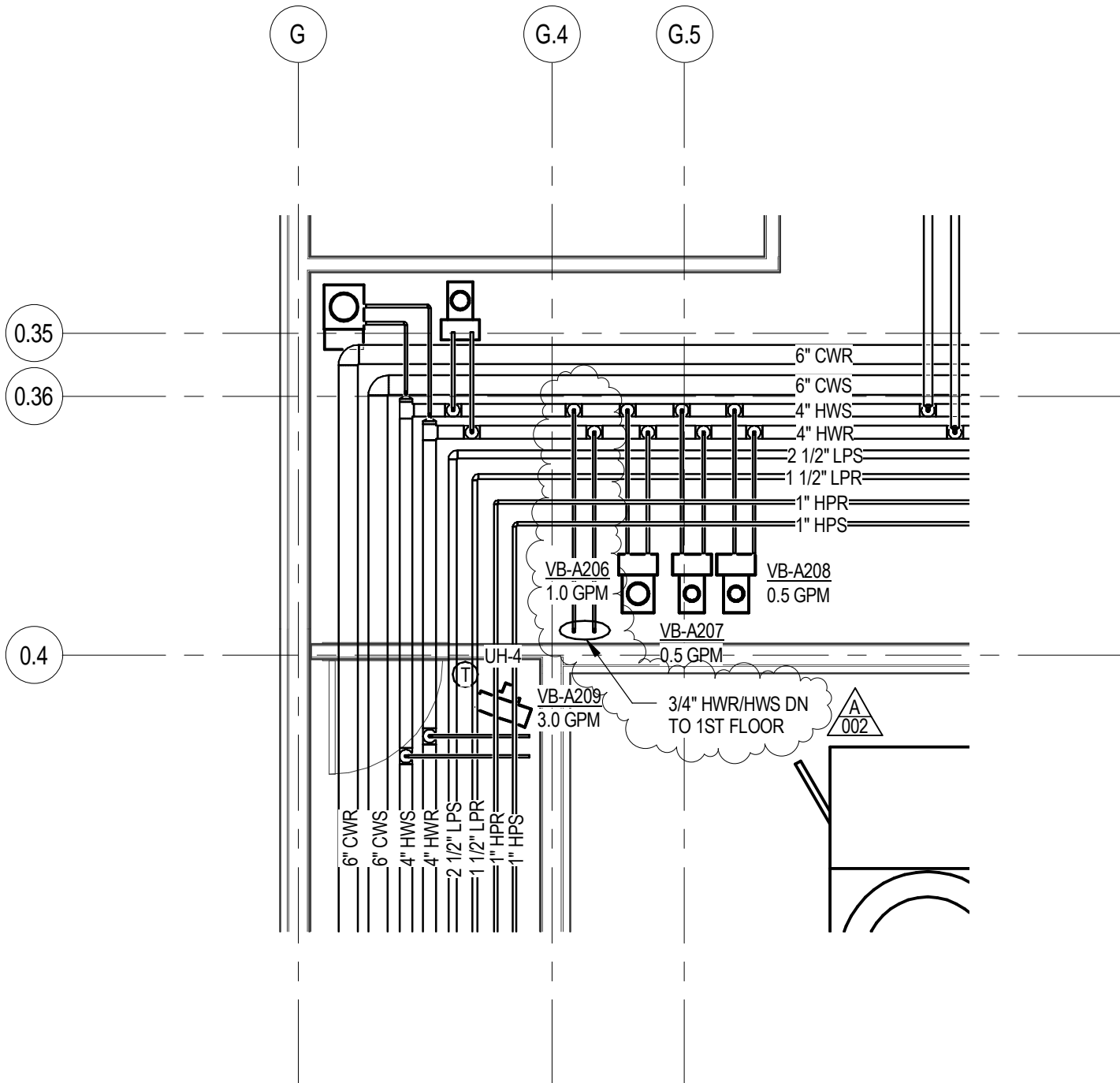
Item # 23 Bid Clarification

Bidder shall hold bid for 90 days as listed on the bid form. Other references to lesser days shall be disregarded.

ATTACHMENTS

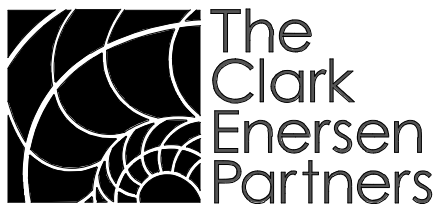
- a. A1.13
- b. SDM-001, SDM-002
- c. SDP-001, SDP-002

END OF ADDENDUM NO. 2



Penthouse HVAC Piping Plan Area "A" and "B"

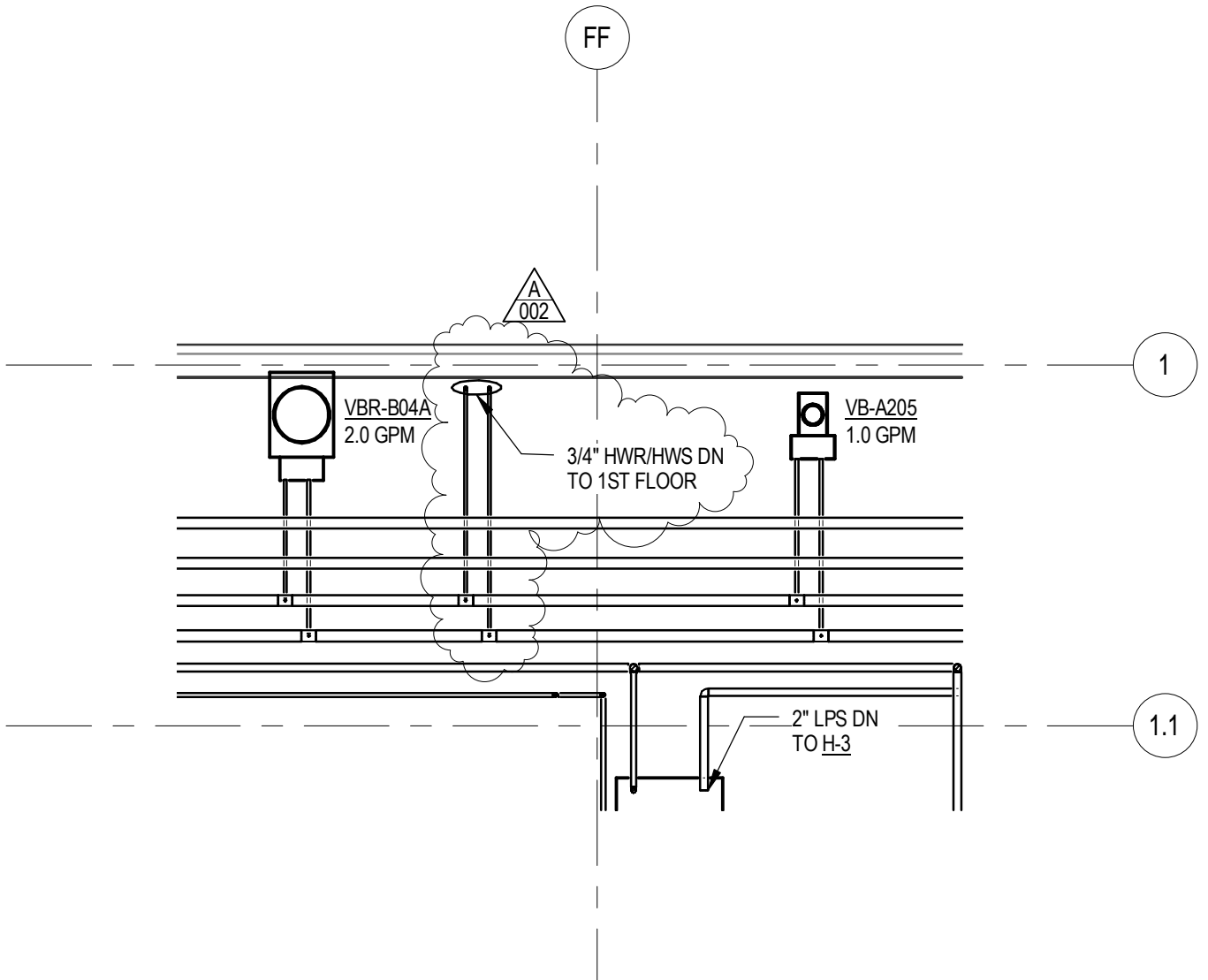
SCALE: 1/4" = 1'-0"



Science & Research Design Group
 1251 NW Briarcliff Parkway, Suite 400 Kansas City, MO 64116-1776
 816 474.8237 Fax 816 474.8233
 www.scienceandresearchdesign.com

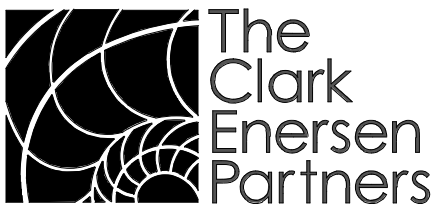
Life Sciences Annex North Wing and East Wing Renovation
 Lincoln, Nebraska
 UNL PN: A090P025 & A090P026

Addendum #2
 Supplemental Drawing: SDM-001
 Revision of Sheet: M2.01
 Date: 02/08/12



Penthouse HVAC Piping Plan Area "C"

SCALE: 1/4" = 1'-0"

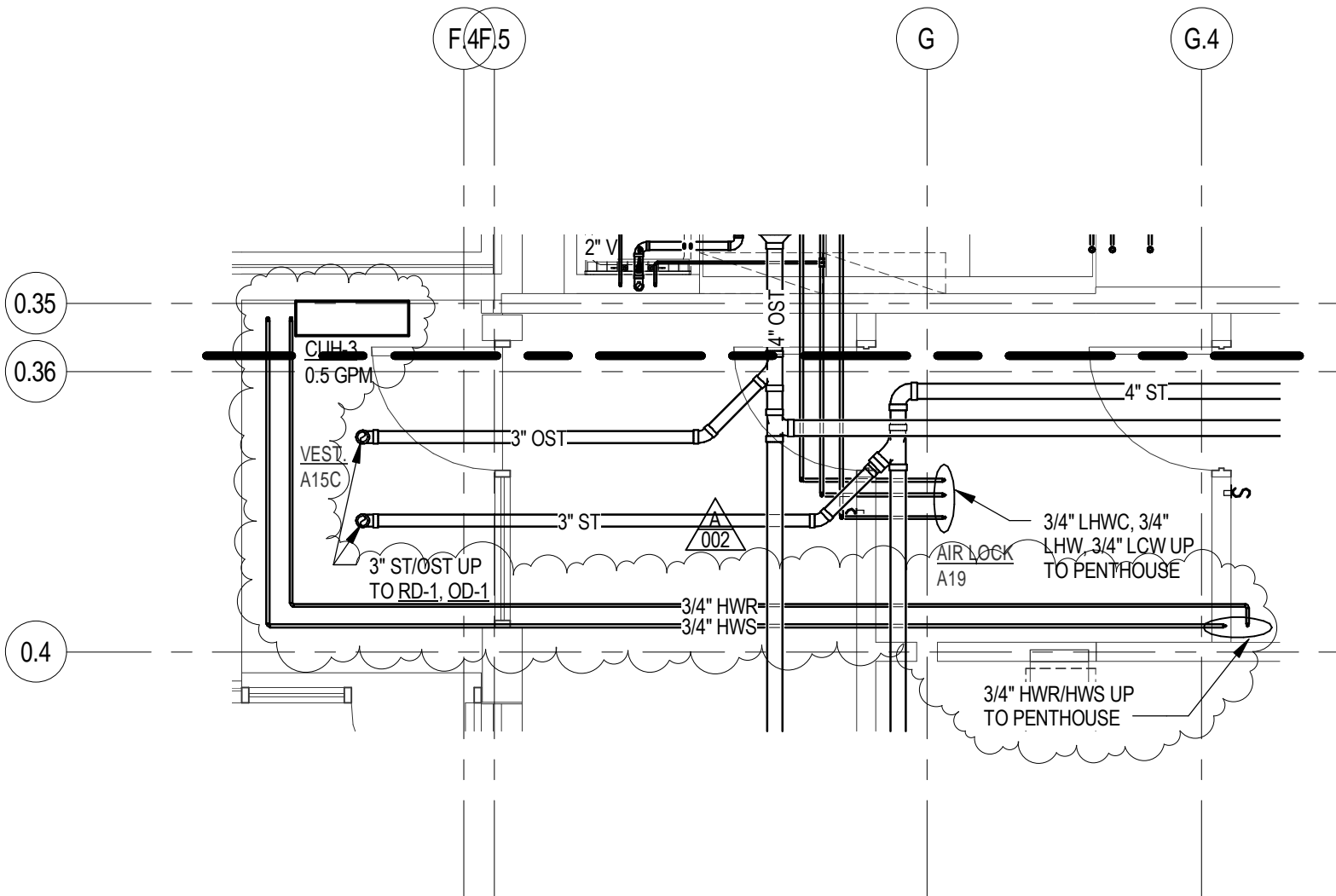


**The
Clark
Enersen
Partners**

Science & Research Design Group
 1251 NW Briarcliff Parkway, Suite 400 Kansas City, MO 64116-1776
 816 474.8237 Fax 816 474.8233
 www.scienceandresearchdesign.com

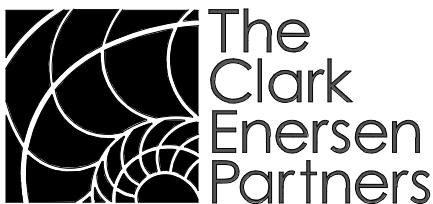
Life Sciences Annex North Wing and East Wing Renovation
 Lincoln, Nebraska
 UNL PN: A090P025 & A090P026

Addendum #2
 Supplemental Drawing: SDM-002
 Revision of Sheet: M2.02
 Date: 02/08/12



First Floor Plumbing Plan Area "B"

SCALE: 1/4" = 1'-0"

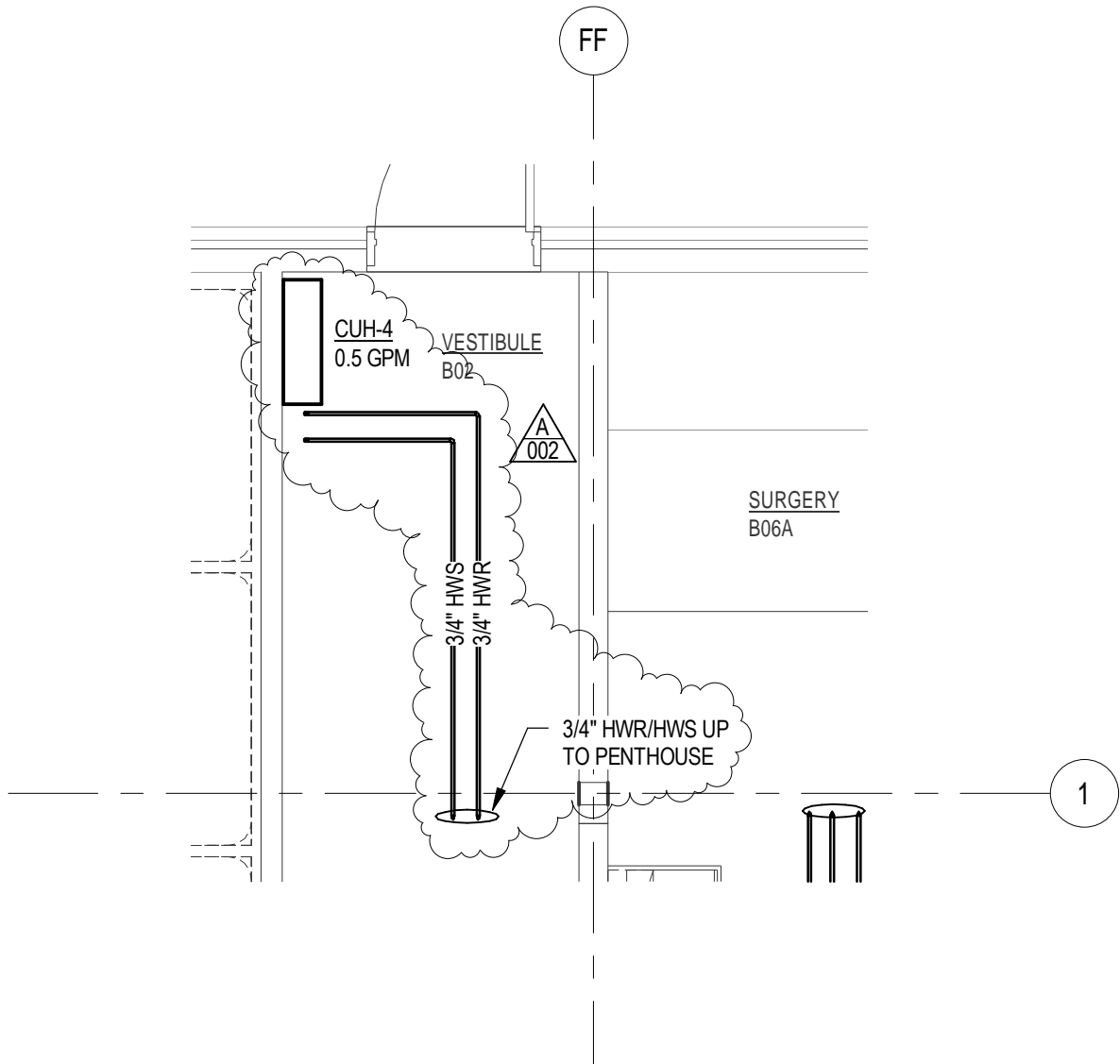


**The
Clark
Enersen
Partners**

Science & Research Design Group
 1251 NW Briarcliff Parkway, Suite 400 Kansas City, MO 64116-1776
 816 474.8237 Fax 816 474.8233
 www.scienceandresearchdesign.com

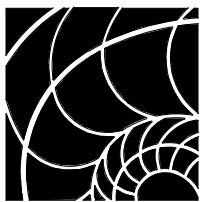
Life Sciences Annex North Wing and East Wing Renovation
 Lincoln, Nebraska
 UNL PN: A090P025 & A090P026

Addendum #2
 Supplemental Drawing: SDP-001
 Revision of Sheet: P1.05
 Date: 02/08/12



First Floor Plumbing Plan Area "C"

SCALE: 1/4" = 1'-0"



The
Clark
Enersen
Partners

Science & Research Design Group
1251 NW Briarcliff Parkway, Suite 400 Kansas City, MO 64116-1776
816 474.8237 Fax 816 474.8233
www.scienceandresearchdesign.com

Life Sciences Annex North Wing and East Wing Renovation
Lincoln, Nebraska
UNL PN: A090P025 & A090P026

Addendum #2
Supplemental Drawing: SDP-002
Revision of Sheet: P1.06
Date: 02/08/12