

Addendum #4

Project Name: New Residential Housing Facility for the Bridges Project.
Southern Hills Drive / NE State Spur 1C @ US Highway 6 & 34 Hastings NE.
Project No.: 10087
Issued: February 7, 2012
Bid Date: 3:00pm, Thursday, February **9th**, 2012
Bid Opening: State Building Division – Suite 400
Location: 521 South 14th Street, Lincoln, NE 68508-2707

This Addendum is issued to all known bidders before receipt of proposals. This Addendum is to authorize the use of the following information in preparing proposals for the above named project. The bidder **must** enter the number of this Addendum on the **Proposal Sheet**.

GENERAL CLARIFICATIONS

ADD 1-1. A list of plan holders as of this date can be found at A & D Technical Supply,
<http://www.adtechplans.com>

MODIFICATIONS TO THE DRAWINGS

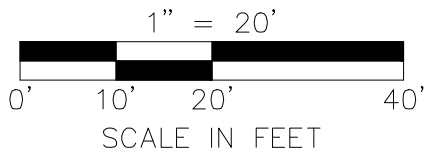
ADD 1-2. DRAWINGS C340

- a. The entrance drive off of State Spur 1C / Southern Hills Drive has been revised to comply with a different category of criteria from NDOR. See the attached drawings Exhibit 1 and Exhibit 2.

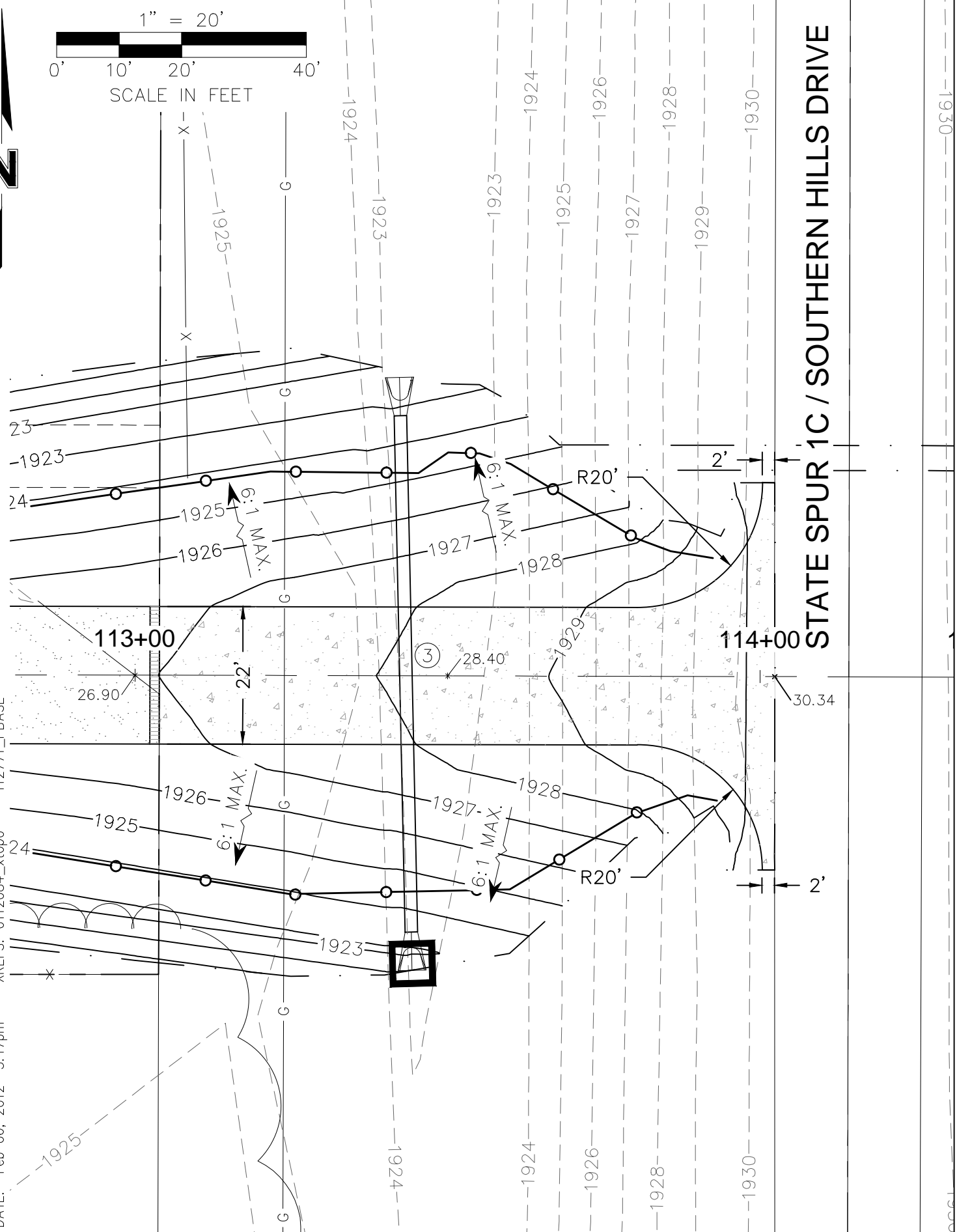
ADD 1-3. DRAWING C404

- a. The typical cross sections of the segmental retaining wall have been revised. See the attached Exhibit 3.

End of Addendum #4



DWG: F:\Projects\011-2771_PBIN\Final_Plans\112771_GRD01.dwg
 DATE: Feb 06, 2012 3:17pm
 USER: Ihusted
 XREFS: 0112084_xtopo 112771_PBASE



PROJECT NO:	011-2771
DRAWN BY:	LH
DATE:	02/06/2012

**REVISED DRIVE
ENTRANCE**

800 West 3rd Street
Suite 219
Hastings, NE 68901
TEL 402.463.0240
FAX 402.463.0187

EXHIBIT
1

2" GRAVEL ROADWAY SURFACING

STA. TO STA.	QUANTITY	UNIT
109+50 - 113+04	67	TONS

3" CRUSHED CONCRETE BASE

STA. TO STA.	QUANTITY	UNIT
109+50 - 113+04	865	SQ. YDS.

8" PC CONCRETE PAVEMENT

STA. TO STA.	QUANTITY	UNIT
113+04 - 114+02	269	SQ. YDS.

CONCRETE HEADER

STA.	QUANTITY	UNIT
113+04	22	L.F.

REINFORCED CONCRETE DRIVEWAY CULVERT W/ F.E.S. ①

NO.	SIZE	LENGTH	SLOPE	DESCRIPTION
3	24"	82'	0.80%	SOUTH ∇ 1923.01 TO NORTH ∇ 1922.35

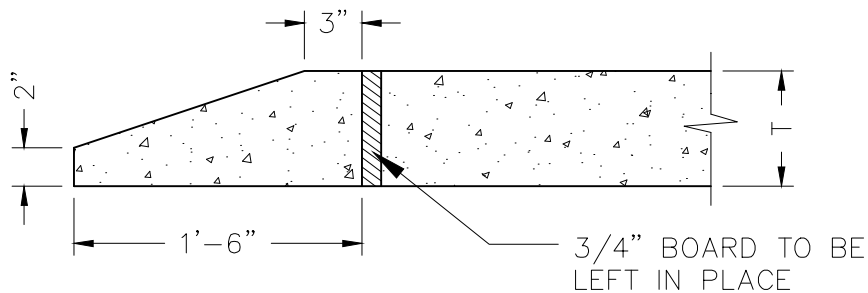
EARTHWORK

EXCAVATION *	EMBANKMENT *
3250 C.Y.	3350 C.Y.

* UTILIZING A BALANCE FACTOR OF 1.0

PAVING NOTES

1. ALL P.C. CONCRETE SHALL HAVE A SLUMP NOT TO EXCEED 4" AND TOTAL AIR ENTRAINED BETWEEN 6.0 TO 8.5 PERCENT BY VOLUME.
2. ALL 8" P.C. CONCRETE DRIVEWAY SHALL BE NDOR CLASS 47B-3500 AND SHALL USE TYPE 1PF CEMENT AND HAVE A 28 DAY COMPRESSIVE STRENGTH OF 3500 PSI.
3. THE MAXIMUM JOINT SPACING FOR 8" P.C. CONCRETE PAVEMENT SHALL BE 15'.
4. ALL 8" P.C. CONCRETE PAVEMENT SHALL HAVE A BURLAP DRAG FINISH.
5. SEE SHEET C400 FOR ADDITIONAL NOTES.



TYPICAL CONCRETE HEADER DETAIL

NOT TO SCALE

DWG: F:\Projects\011-2771_PBIN\Final_Plans\112771_GRD01.dwg USER: Ihusted
 DATE: Feb 06, 2012 3:16pm XREFS: 0112084_xtopo 112771_PBASE

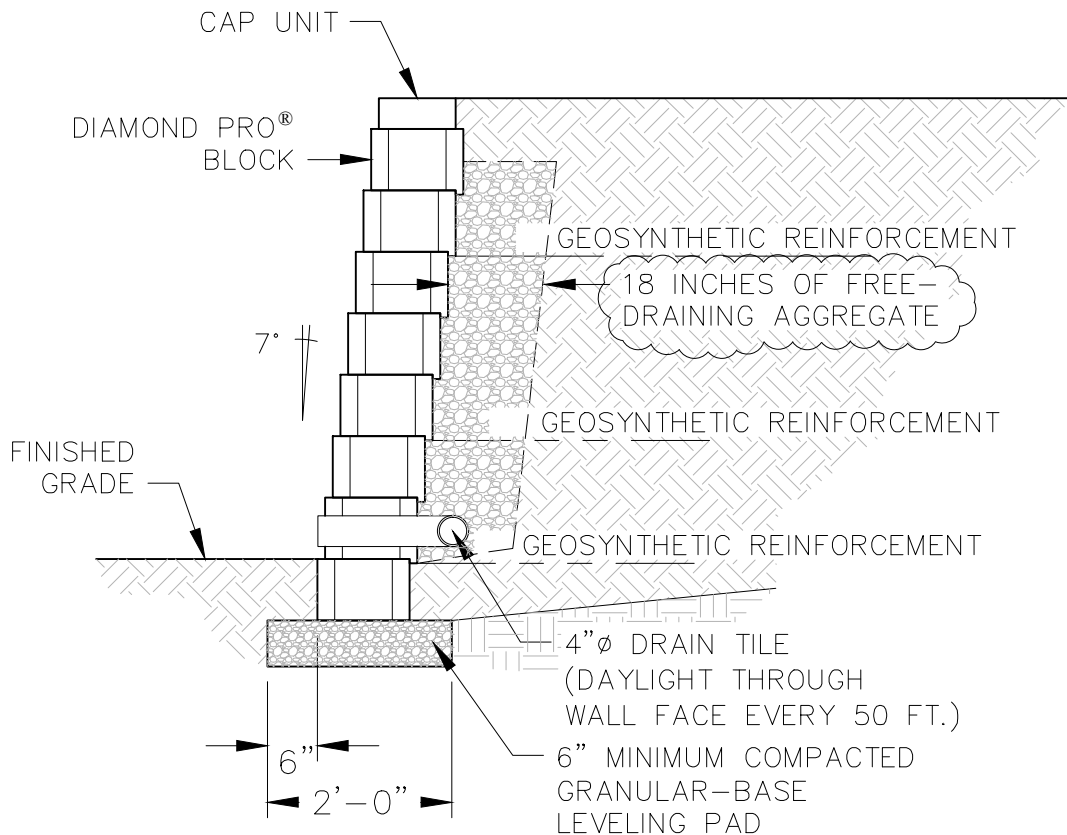
PROJECT NO:	011-2771
DRAWN BY:	LH
DATE:	02/06/2012

REVISED DRIVE ENTRANCE QUANTITIES

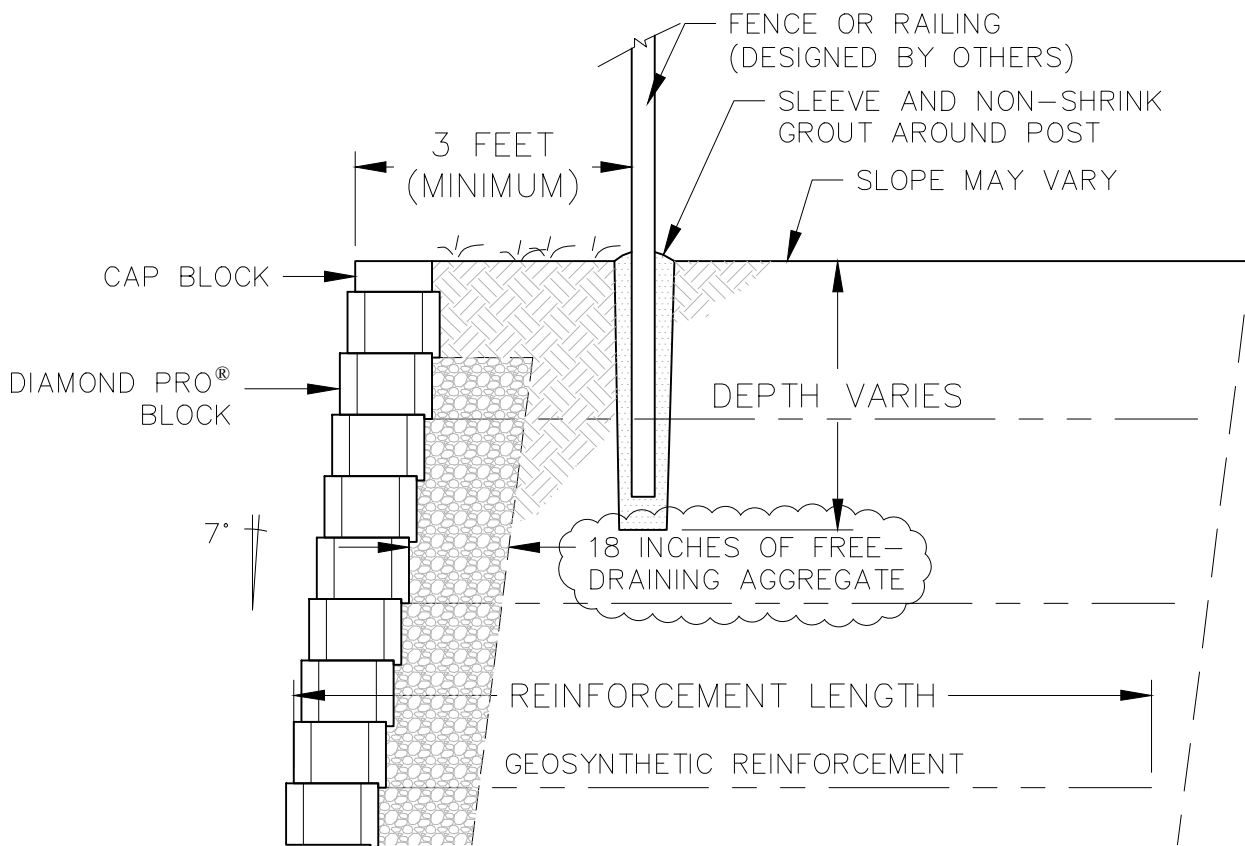


800 West 3rd Street
 Suite 219
 Hastings, NE 68901
 TEL 402.463.0240
 FAX 402.463.0187

EXHIBIT
2



TYPICAL CROSS SECTION



FENCE BEHIND WALL

DWG: F:\Projects\011-2771_PBIN\Final_Plans\112771_GRD01.dwg USER: Ihusted
 DATE: Feb 06, 2012 3:16pm XREFS: 0112084_xtopo 112771_PBASE

PROJECT NO: 011-2771
DRAWN BY: LH
DATE: 02/06/2012

REVISED DETAILS



800 West 3rd Street
 Suite 219
 Hastings, NE 68901
 TEL 402.463.0240
 FAX 402.463.0187

EXHIBIT

3