

Addendum No. 1

Project: Village on the Preserve – Phase 2
For: Lanoha Development

Date: 1 February 2012
 From: Studio 951, Ltd.
 To: All plan holders.

All information and instructions given herein shall become part of the Contract Documents.

Drawings – Please make the following changes:

C3.0 – Please find a revised Paving Plan. The attached plan is printed not to scale at 11”x17” from a 36”x24” original.

C4.0 – Please find revised information for the domestic water and fire sprinkler service entrances. The attached plan is printed not to scale at 11”x17” from a 36”x24” original.

A2.01 –

See A2.01-1, A2.01-2 showing a revised door schedule and a modification to the finish schedule.

A2.03 –

See A2.03-1 with a revision to the ceiling vault depicted in Unit B.

A2.04 –

See A2.04-1, A2.04-2 showing revisions to the roof plan.

A2.20 –

See A2.20-1 showing a revised door schedule.

A2.21 –

See A2.21-1 showing a revised door schedule.

A2.22 –

See A2.22-1 showing a revised door schedule.

A2.23 –

See A2.23-1 showing a revised door schedule.

A2.24 –

See A2.24-1 showing a revised door schedule.

A2.25 –

See A2.25-1 showing a revised door schedule and a modification to the finish schedule.

A2.26 –

See A2.26-1 showing a revised door schedule and a modification to the finish schedule.

A3.01 –

See A3.01-1, A3.01-2 showing revised side elevations to show coordination with roof plan. See a note regarding siding and trim material which applies to all building exterior elevations.

A3.12 –

See A3.12-1, A3.12-2 showing a revised building section to show coordination with roof plan. See a note regarding attic and floor assembly draftstopping.

A4.01 –

See A4.01-1 showing revised dimensions for depth of detached garage units. Notes added for light fixtures.

A4.02 –

See A4.02-1 showing revised dimensions for depth of detached garage units. Notes added for light fixtures.

S2.4 – See revised roof plan attached. The attached plan is printed not to scale at 11"x17" from a 36"x24" original.

P2.01 –

See P2.01-1, P2.01-2 for revised Main Floor Overall Plumbing Plan showing coordination with the revised information on C4.0 noted above.

E2.01 –

See E2.01-1 showing revisions to the Electrical Riser.

See E2.01-2, E2.01-3, E2.01-4 showing revision to the Main Floor Electrical Plan.

E2.02 –

See E2.02-1, E2.02-2 for revised information.

E2.03 –

See E2.03-1, E2.02-3 for revised information.

E2.04 –

See E2.04-1, E2.04-2, E2.04-3, E2.04-4, E2.04-5, E2.04-6, E2.04-7

Please add a note to each sheet to read, "Cable TV outlet box and wiring by Others. Location shown for reference only."

E2.05 –

See E2.05-1 showing panel schedule for House Panel.

END of Addendum No. 1

OVERALL MAIN FLOOR DOOR & FRAME SCHEDULE

MARK	DOOR						FRAME			HARDWARE										REMARKS	
	WIDTH	HEIGHT	THICKNESS	MATERIAL	FINISH	TYPE	MATERIAL	FINISH	BUTTS	LOCK	CLOSER	KICK PLATE	PULL	PUSH	EXIT DEVICE	FLOOR STOP	WALL STOP	THRESHOLD	FINISH		FIRE RATING
1	9'-0"	8'-0"	3/4"	STL	PF	A	WD	PF	NA	GARAGE									BRZ	--	SPECS BY OHD MANUF.
2	9'-0"	8'-0"	3/4"	STL	PF	A	WD	PF	NA	GARAGE									BRZ	--	SPECS BY OHD MANUF.
3	3'-0"	6'-8"	3/4"	AL	PF	B	AL	PF	3	ENTRANCE	*		*	*	*		*		BRZ	--	
4	3'-0"	6'-8"	3/4"	MAS	PT	D	HM	PT	3	PASSAGE	*					*			BRZ	60	HOLD OPEN
5	3'-0"	6'-8"	3/4"	MAS	PT	C	WD	PT	3	SERVICE	*								BRZ	20	
6	3'-0"	6'-8"	3/4"	STL	PT	C	WD	PT	3	ENTRANCE	*					*			BRZ	20	6 PANEL DR
7	9'-0"	8'-0"	3/4"	STL	PF	A	WD	PF	NA	GARAGE									BRZ	--	SPECS BY OHD MANUF.
8	9'-0"	8'-0"	3/4"	STL	PF	A	WD	PF	NA	GARAGE									BRZ	--	SPECS BY OHD MANUF.
9	3'-0"	6'-8"	3/4"	STL	PT	C	WD	PT	3	ENTRANCE	*					*			BRZ	20	6 PANEL DR
10	3'-0"	6'-8"	3/4"	STL	PT	C	WD	PT	3	ENTRANCE	*					*			BRZ	20	6 PANEL DR
11	9'-0"	8'-0"	3/4"	STL	PF	A	WD	PF	NA	GARAGE									BRZ	--	SPECS BY OHD MANUF.
12	3'-0"	6'-8"	3/4"	WD	PF	C	HM	PT	3	SHELTER	*								BRZ	60	"STORM PRO" (MIDWEST)
13	9'-0"	8'-0"	3/4"	STL	PF	A	WD	PF	NA	GARAGE									BRZ	--	SPECS BY OHD MANUF.
14	3'-0"	6'-8"	3/4"	STL	PT	C	WD	PT	3	ENTRANCE	*					*			BRZ	20	6 PANEL DR
15	9'-0"	8'-0"	3/4"	STL	PF	A	WD	PF	NA	GARAGE									BRZ	--	SPECS BY OHD MANUF.
16	3'-0"	6'-8"	3/4"	STL	PT	C	WD	PT	3	ENTRANCE	*					*			BRZ	20	6 PANEL DR
17	9'-0"	8'-0"	3/4"	STL	PF	A	WD	PF	NA	GARAGE									BRZ	--	SPECS BY OHD MANUF.
18	3'-0"	6'-8"	3/4"	STL	PT	C	WD	PT	3	ENTRANCE	*					*			BRZ	20	6 PANEL DR
19	3'-0"	6'-8"	3/4"	AL	PF	B	AL	PF	3	ENTRANCE	*	*	*	*	*	*	*	*	BRZ	--	
20	3'-0"	6'-8"	3/4"	MAS	PT	D	HM	PT	3	PASSAGE	*					*			BRZ	60	HOLD OPEN
21	3'-0"	6'-8"	3/4"	STL	PT	C	WD	PT	3	ENTRANCE	*					*			BRZ	20	6 PANEL DR
22	3'-0"	6'-8"	3/4"	MAS	PT	C	WD	PT	3	SERVICE	*								BRZ	20	
23	9'-0"	8'-0"	3/4"	STL	PF	A	WD	PF	NA	GARAGE									BRZ	--	SPECS BY OHD MANUF.
24	9'-0"	8'-0"	3/4"	STL	PF	A	WD	PF	NA	GARAGE									BRZ	--	SPECS BY OHD MANUF.
25	3'-0"	6'-8"	3/4"	STL	PT	C	WD	PT	3	ENTRANCE	*					*			BRZ	20	6 PANEL DR

OVERALL MAIN FLOOR ROOM FINISH SCHEDULE

No	ROOM NAME	FLOOR	BASE	WALLS				CEILING	REMARKS
				NORTH	SOUTH	EAST	WEST	MATERIAL	
1-100	GAR. #1	CONCRETE	NO	G.W.B.-PT	G.W.B.-PT	G.W.B.-PT	G.W.B.-PT	G.W.B.-TXT	
1-101	GAR. #2	CONCRETE	NO	G.W.B.-PT	G.W.B.-PT	G.W.B.-PT	G.W.B.-PT	G.W.B.-TXT	
1-103	VEST. #2	CARPET	WD	G.W.B.-PT	G.W.B.-PT	G.W.B.-PT	G.W.B.-PT	G.W.B.-TXT	
1-104	CLOSET	CARPET	WD	G.W.B.-PT	G.W.B.-PT	G.W.B.-PT	G.W.B.-PT	G.W.B.-TXT	
1-105	GAR. #3	CONCRETE	NO	G.W.B.-PT	G.W.B.-PT	G.W.B.-PT	G.W.B.-PT	G.W.B.-TXT	
1-106	GAR. #4	CONCRETE	NO	G.W.B.-PT	G.W.B.-PT	G.W.B.-PT	G.W.B.-PT	G.W.B.-TXT	
1-107	GAR. #5	CONCRETE	NO	G.W.B.-PT	G.W.B.-PT	G.W.B.-PT	G.W.B.-PT	G.W.B.-TXT	
1-108	SHELTER	CONCRETE	NO	G.W.B.-PT	G.W.B.-PT	G.W.B.-PT	G.W.B.-PT	G.W.B.-TXT	
1-109	INT. CORRIDOR	CARPET	WD	G.W.B.-PT	G.W.B.-PT	G.W.B.-PT	G.W.B.-PT	G.W.B.-TXT	
1-110	GAR. #6	CONCRETE	NO	G.W.B.-PT	G.W.B.-PT	G.W.B.-PT	G.W.B.-PT	G.W.B.-TXT	
1-111	GAR. #7	CONCRETE	NO	G.W.B.-PT	G.W.B.-PT	G.W.B.-PT	G.W.B.-PT	G.W.B.-TXT	
1-112	GAR. #8	CONCRETE	NO	G.W.B.-PT	G.W.B.-PT	G.W.B.-PT	G.W.B.-PT	G.W.B.-TXT	
1-113	VEST. #1	CARPET	WD	G.W.B.-PT	G.W.B.-PT	G.W.B.-PT	G.W.B.-PT	G.W.B.-TXT	
1-114	H20	CONCRETE	NO	G.W.B.-PT	G.W.B.-PT	G.W.B.-PT	G.W.B.-PT	G.W.B.-TXT	
1-115	GAR. #9	CONCRETE	NO	G.W.B.-PT	G.W.B.-PT	G.W.B.-PT	G.W.B.-PT	G.W.B.-TXT	
1-116	GAR. #10	CONCRETE	NO	G.W.B.-PT	G.W.B.-PT	G.W.B.-PT	G.W.B.-PT	G.W.B.-TXT	

VILLAGE ON THE PRESERVE - PHASE 2

NEW MULTIFAMILY HOUSING
186TH & WRIGHT STREETS
OMAHA, NEBRASKA

OVERALL BLDG SCHEDULES

not to scale

studio
951

web: studio951.net
off: 402.477.1666
fax: 402.477.1667
1000 F Street, Suite 200, Lincoln, NE 68502

©studio951 Ltd.

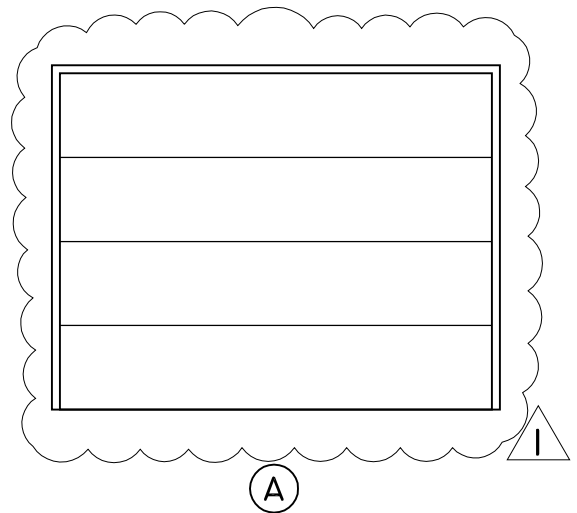
This Drawing and associated specifications is copyright as dated and shall remain in the property of the Architect. No part of these documents shall be reproduced in any form or by any means without written permission from the Architect.


Job No. > 11-047

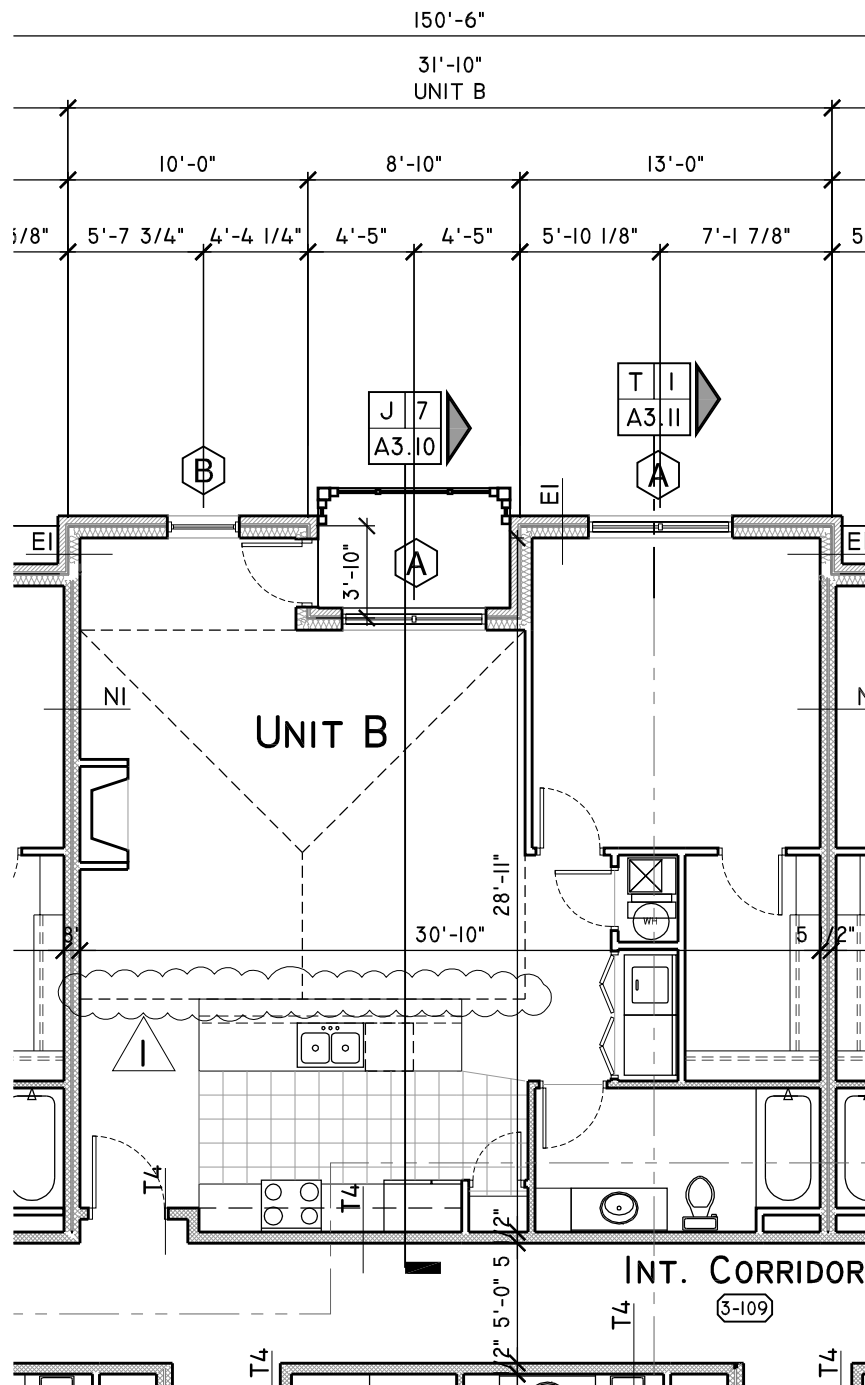
A2.01-1

Addedda 01

Drawing released > 1 Feb 2012



VILLAGE ON THE PRESERVE - PHASE 2		 <p>web: studio951.net a: 774-02-4771666 f: 402-4771667 100 P Street, Suite 200, Lincoln, ne 68508</p>	©studio951 Ltd. This Drawing and associated specifications is copyright as dated and shall remain in the property of the Architect. No part of these documents shall be reproduced in any form or by any means without written permission from the Architect.
NEW MULTIFAMILY HOUSING 186TH & WRIGHT STREETS OMAHA, NEBRASKA			Job No.> 11-047
COMMON AREA DOOR TYPES - PARTIAL VIEW	1/4" = 1' - 0"		A2.01-2 Addedda 01 Drawing released> 1 Feb 2012



VILLAGE ON THE PRESERVE - PHASE 2

NEW MULTIFAMILY HOUSING
 186TH & WRIGHT STREETS
 OMAHA, NEBRASKA

THIRD FLOOR PLAN - PARTIAL VIEW

1/8" = 1' - 0"

studio
951

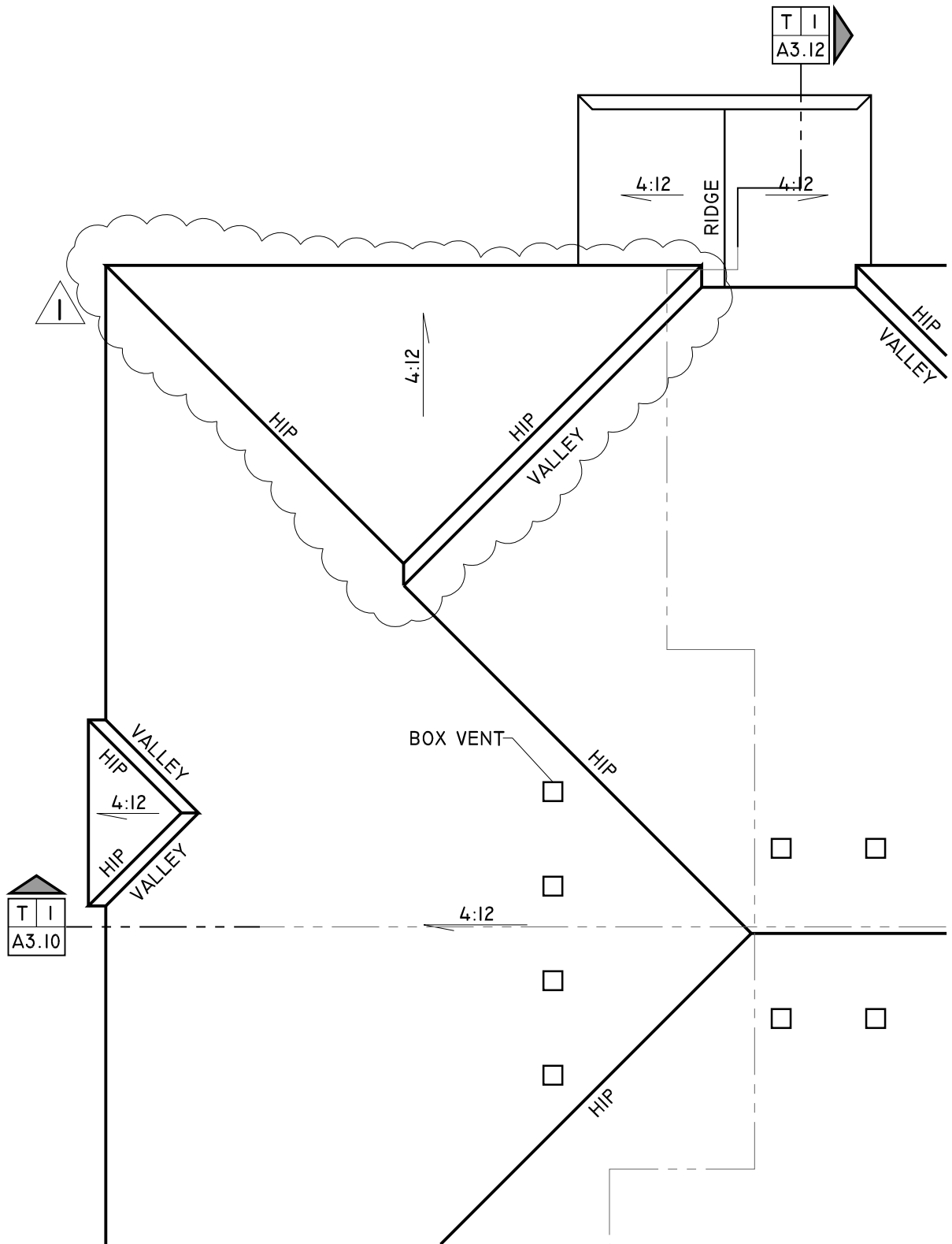
web: studio951.net
 a 774 02 477 1666
 fax 402 477 1667
 1100 P Street, Suite 203, Lincoln, NE 68501


©studio951 Ltd.
 This Drawing and associated specifications
 is copyright as dated and shall remain in
 the property of the Architect. No part of
 these documents shall be reproduced in
 any form or by any means without written
 permission from the Architect.

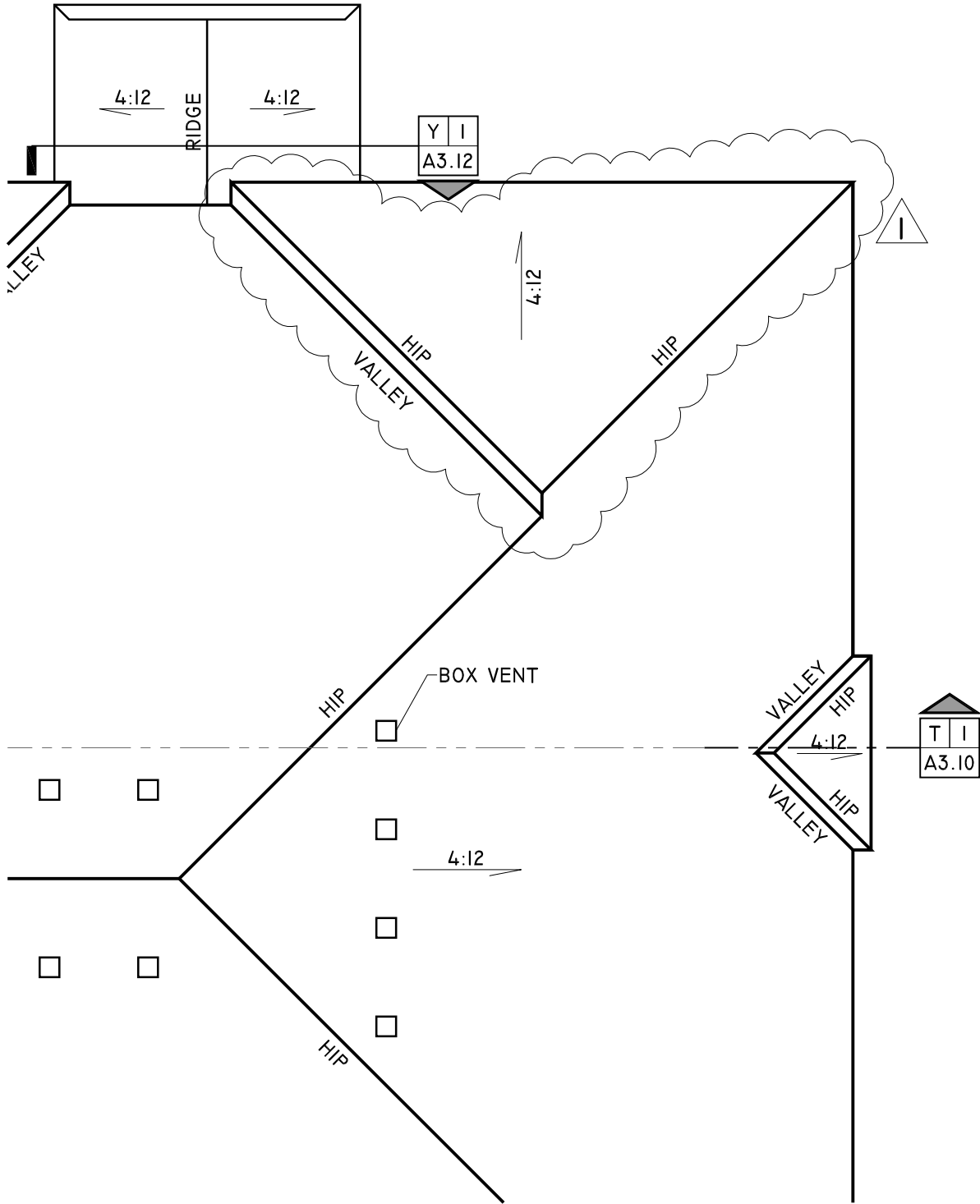
Job No. > 11-047


A2.03-1

Adedda 01
 Drawing released > 1 Feb 2012



VILLAGE ON THE PRESERVE - PHASE 2			©studio951 Ltd.
NEW MULTIFAMILY HOUSING 186TH & WRIGHT STREETS OMAHA, NEBRASKA			This Drawing and associated specifications is copyright as dated and shall remain in the property of the Architect. No part of these documents shall be reproduced in any form or by any means without written permission from the Architect.
ROOF PLAN - PARTIAL VIEW		<small> web: studio951.net a: 7402-477-1666 fax: 402-477-1667 1100 F Street, Suite 203, Lincoln, NE 68508 </small>	Job No. > 11-047
1/8" = 1' - 0"		A2.04-1 Addedda 01 Drawing released > 1 Feb 2012	



VILLAGE ON THE PRESERVE - PHASE 2			©studio951 Ltd. This Drawing and associated specifications Is copyright as dated and shall remain in the property of the Architect. No part of these documents shall be reproduced in any form or by any means without written permission from the Architect.
NEW MULTIFAMILY HOUSING 186TH & WRIGHT STREETS OMAHA, NEBRASKA			Job No.> 11-047
ROOF PLAN - PARTIAL VIEW		<small> web studio951.net a 774 02 477 1666 f ax 402 477 1667 1100 P Street, Suite 203, Lincoln, ne 68508 </small>	A2.04-2 Addedda 01 Drawing released> 1 Feb 2012
		1/8" = 1' - 0"	

UNIT A DOOR & FRAME SCHEDULE (2,3)

MARK	DOOR						FRAME		HARDWARE										FIRE RATING	REMARKS				
	WIDTH	HEIGHT	THICKNESS	MATERIAL	FINISH	TYPE	MATERIAL	FINISH	BUTTS	LOCK	CLOSER	KICK PLATE	PULL	PUSH	EXIT DEVICE	FLOOR STOP	WALL STOP	THRESHOLD			FINISH			
1	3'-0"	6'-8"	1 3/4"	MAS	PT	D	HM	PT	3	ENTRANCE	•							•		BRZ	20			
2	PR 2'-6"	6'-8"	1 1/4"	VINYL	PF	H	VINYL	PF		SLIDER									•	BRZ	--	SLIDER		
3	2'-6"	6'-8"	1 3/8"	MAS	PT	D	WD	PT	3	PRIVACY										•	BRZ	--		
4	2'-6"	6'-8"	1 3/8"	MAS	PT	D	WD	PT	3	PASSAGE											BRZ	--		
5	2'-6"	6'-8"	1 3/8"	MAS	PT	D	WD	PT	3	PRIVACY											•	BRZ	--	
6	2'-4"	6'-8"	1 3/8"	MAS	PT	D	WD	PT	3	PASSAGE												BRZ	--	
7	2'-0"	6'-8"	1 3/8"	MAS	PT	D	WD	PT	3	PASSAGE												BRZ	--	

UNIT A DOOR & FRAME SCHEDULE (I) - ANSI B

MARK	DOOR						FRAME		HARDWARE										FIRE RATING	REMARKS					
	WIDTH	HEIGHT	THICKNESS	MATERIAL	FINISH	TYPE	MATERIAL	FINISH	BUTTS	LOCK	CLOSER	KICK PLATE	PULL	PUSH	EXIT DEVICE	FLOOR STOP	WALL STOP	THRESHOLD			FINISH				
1	3'-0"	6'-8"	1 3/4"	MAS	PT	D	HM	PT	3	ENTRANCE	•									•		BRZ	20		
2	PR 2'-6"	6'-8"	1 1/4"	VINYL	PF	H	VINYL	PF		SLIDER										•		BRZ	--	SLIDER	
3	2'-10"	6'-8"	1 3/8"	MAS	PT	D	WD	PF	3	PRIVACY											•	BRZ	--		
4	2'-10"	6'-8"	1 3/8"	MAS	PT	D	WD	PF	3	PASSAGE												BRZ	--		
5	2'-10"	6'-8"	1 3/8"	MAS	PT	D	WD	PF	3	PRIVACY												•	BRZ	--	
6	2'-4"	6'-8"	1 3/8"	MAS	PT	D	WD	PF	3	PASSAGE													BRZ	--	
7	2'-0"	6'-8"	1 3/8"	MAS	PT	D	WD	PF	3	PASSAGE													BRZ	--	
8	2'-0"	6'-8"	1 3/8"	MAS	PT	D	WD	PF	3	PASSAGE													BRZ	--	



VILLAGE ON THE PRESERVE - PHASE 2

NEW MULTIFAMILY HOUSING
186TH & WRIGHT STREETS
OMAHA, NEBRASKA

UNIT A DOOR SCHEDULES

no scale

studio
951

web: studio951.net
a 774 247 1666
f ax 402 477 1667
100 P Street, Suite 203, Lincoln, ne 68501

©studio951 Ltd.

This Drawing and associated specifications is copyright as dated and shall remain in the property of the Architect. No part of these documents shall be reproduced in any form or by any means without written permission from the Architect.

Job No.> 11-047

A2.20-1

Addedda 01
Drawing released> 1 Feb 2012

UNIT B DOOR & FRAME SCHEDULE

MARK	DOOR						FRAME			HARDWARE								FIRE RATING	REMARKS		
	WIDTH	HEIGHT	THICKNESS	MATERIAL	FINISH	TYPE	MATERIAL	FINISH	BUTTS	LOCK	CLOSER	KICK PLATE	PULL	PUSH	EXIT DEVICE	FLOOR STOP	WALL STOP			THRESHOLD	FINISH
1	3'-0"	6'-8"	1 3/4"	MAS	PT	D	HM	PT	3	ENTRANCE	•						•		BRZ	20	
2	2'-6"	6'-8"	1 3/4"	STL	PT	E	WD	PT	3	ENTRANCE							•	•	BRZ	--	DECK DOOR
3	2'-6"	6'-8"	1 3/8"	MAS	PT	D	WD	PF	3	PRIVACY							•		BRZ	--	
4	2'-6"	6'-8"	1 3/8"	MAS	PT	D	WD	PF	3	PASSAGE									BRZ	--	
5	2'-6"	6'-8"	1 3/8"	MAS	PT	D	WD	PF	3	PRIVACY							•		BRZ	--	
6	2'-4"	6'-8"	1 3/8"	MAS	PT	D	WD	PF	3	PASSAGE									BRZ	--	
7	2'-0"	6'-8"	1 3/8"	MAS	PT	D	WD	PF	3	PASSAGE									BRZ	--	
8	4 @ 1'-3"	6'-8"	1 3/8"	MAS	PT	F	WD	PF	3	PASSAGE									BRZ	--	60" BI-FOLD

VILLAGE ON THE PRESERVE - PHASE 2

NEW MULTIFAMILY HOUSING
186TH & WRIGHT STREETS
OMAHA, NEBRASKA

UNIT B DOOR SCHEDULE

no scale

studio
951

web studio951.net
a 774 02 477 1666
f ax 402 477 1667
100 P Street, Suite 200, Lincoln, ne 68501

©studio951 Ltd.

This Drawing and associated specifications
is copyright as dated and shall remain in
the property of the Architect. No part of
these documents shall be reproduced in
any form or by any means without written
permission from the Architect.

Job No.> 11-047

A2.21-1

Adedda 01

Drawing released> 1 Feb 2012

UNIT C DOOR & FRAME SCHEDULE

MARK	DOOR						FRAME			HARDWARE								FIRE RATING	REMARKS		
	WIDTH	HEIGHT	THICKNESS	MATERIAL	FINISH	TYPE	MATERIAL	FINISH	BUTTS	LOCK	CLOSER	KICK PLATE	PULL	PUSH	EXIT DEVICE	FLOOR STOP	WALL STOP			THRESHOLD	FINISH
1	3'-0"	6'-8"	1 3/4"	MAS	PT	D	HM	PT	3	ENTRANCE	•						•		BRZ	20	
2	2'-6"	6'-8"	1 3/4"	STL	PT	E	WD	PT	3	ENTRANCE							•	•	BRZ	--	DECK DOOR
3	2'-6"	6'-8"	1 3/8"	MAS	PT	D	WD	PF	3	PRIVACY							•		BRZ	--	
4	2'-6"	6'-8"	1 3/8"	MAS	PT	D	WD	PF	3	PASSAGE							•		BRZ	--	
5	2'-6"	6'-8"	1 3/8"	MAS	PT	D	WD	PF	3	PRIVACY							•		BRZ	--	
6	2'-4"	6'-8"	1 3/8"	MAS	PT	D	WD	PF	3	PASSAGE									BRZ	--	
7	2'-0"	6'-8"	1 3/8"	MAS	PT	D	WD	PF	3	PASSAGE									BRZ	--	
8	4 @ 1'-3"	6'-8"	1 3/8"	MAS	PT	F	WD	PF	3	PASSAGE									BRZ	--	60" BI-FOLD

VILLAGE ON THE PRESERVE - PHASE 2

NEW MULTIFAMILY HOUSING
186TH & WRIGHT STREETS
OMAHA, NEBRASKA

UNIT C DOOR SCHEDULE

no scale

studio
951

web: studio951.net
a: 740.247.1666
f: 402.477.1667
100 P Street, Suite 203, Lincoln, ne 68501

©studio951 Ltd.

This Drawing and associated specifications is copyright as dated and shall remain in the property of the Architect. No part of these documents shall be reproduced in any form or by any means without written permission from the Architect.

Job No. > 11-047

A2.22-1

Addedda 01
Drawing released > 1 Feb 2012

UNIT D DOOR & FRAME SCHEDULE

MARK	DOOR						FRAME			HARDWARE								FIRE RATING	REMARKS		
	WIDTH	HEIGHT	THICKNESS	MATERIAL	FINISH	TYPE	MATERIAL	FINISH	BUTTS	LOCK	CLOSER	KICK PLATE	PULL	PUSH	EXIT DEVICE	FLOOR STOP	WALL STOP			THRESHOLD	FINISH
1	3'-0"	6'-8"	1 3/4"	MAS	PT	D	HM	PT	3	ENTRANCE	•								BRZ	20	
2	2'-6"	6'-8"	1 3/4"	STL	PT	E	WD	PT	3	ENTRANCE							•		BRZ	--	DECK DOOR
3	2'-6"	6'-8"	1 3/8"	MAS	PT	D	WD	PF	3	PRIVACY							•		BRZ	--	
4	2'-6"	6'-8"	1 3/8"	MAS	PT	D	WD	PF	3	PASSAGE							•		BRZ	--	
5	2'-6"	6'-8"	1 3/8"	MAS	PT	D	WD	PF	3	PRIVACY							•		BRZ	--	
6	2'-6"	6'-8"	1 3/8"	MAS	PT	D	WD	PF	3	PASSAGE									BRZ	--	BI-FOLD
7	2'-0"	6'-8"	1 3/8"	MAS	PT	D	WD	PF	3	PASSAGE									BRZ	--	
8	2'-10"	6'-8"	1 3/8"	MAS	PT	D	WD	PF	3	PASSAGE							•		BRZ	--	
9	2'-6"	6'-8"	1 3/8"	MAS	PT	D	WD	PF	3	PRIVACY							•		BRZ	--	
10	2'-6"	6'-8"	1 3/8"	MAS	PT	D	WD	PF	3	PRIVACY							•		BRZ	--	
11	2'-0"	6'-8"	1 3/8"	MAS	PT	D	WD	PF	3	PASSAGE									BRZ	--	

VILLAGE ON THE PRESERVE - PHASE 2

NEW MULTIFAMILY HOUSING
186TH & WRIGHT STREETS
OMAHA, NEBRASKA

UNIT D DOOR SCHEDULE

no scale

studio
951

web: studio951.net
a: 774-02-477-1666
f: 402-477-1667
100 P Street, Suite 200, Lincoln, ne 68501

©studio951 Ltd.

This Drawing and associated specifications
is copyright as dated and shall remain in
the property of the Architect. No part of
these documents shall be reproduced in
any form or by any means without written
permission from the Architect.

Job No.> 11-047

A2.23-1

Adedda 01

Drawing released> 1 Feb 2012

UNIT E DOOR & FRAME SCHEDULE

MARK	DOOR						FRAME			HARDWARE										FIRE RATING	REMARKS
	WIDTH	HEIGHT	THICKNESS	MATERIAL	FINISH	TYPE	MATERIAL	FINISH	BUTTS	LOCK	CLOSER	KICK PLATE	PULL	PUSH	EXIT DEVICE	FLOOR STOP	WALL STOP	THRESHOLD	FINISH		
1	3'-0"	6'-8"	1 3/4"	MAS	PT	D	HM	PT	3	ENTRANCE	•						•		BRZ	20	
2	PR 2'-6"	6'-8"	1 1/4"	VINYL	PF	H	VINYL	PF	3	SLIDER								•	BRZ	--	SLIDER
3	2'-6"	6'-8"	1 3/8"	MAS	PT	D	WD	PF	3	PRIVACY									BRZ	--	
4	2'-6"	6'-8"	1 3/8"	MAS	PT	D	WD	PF	3	PASSAGE									BRZ	--	
5	2'-6"	6'-8"	1 3/8"	MAS	PT	D	WD	PF	3	PRIVACY									BRZ	--	
6	2'-6"	6'-8"	1 3/8"	MAS	PT	D	WD	PF	3	PASSAGE									BRZ	--	
7	1'-9"	6'-8"	1 3/8"	MAS	PT	D	WD	PF	3	PASSAGE									BRZ	--	
8	4 @ 1'-3"	6'-8"	1 3/8"	MAS	PT	F	WD	PF	3	PASSAGE									BRZ	--	60" BI-FOLD
9	2'-6"	6'-8"	1 3/8"	MAS	PT	D	WD	PF	3	PRIVACY									BRZ	--	
10	2'-6"	6'-8"	1 3/8"	MAS	PT	D	WD	PF	3	PRIVACY									BRZ	--	

VILLAGE ON THE PRESERVE - PHASE 2

NEW MULTIFAMILY HOUSING
186TH & WRIGHT STREETS
OMAHA, NEBRASKA

UNIT E DOOR SCHEDULE

no scale

studio
951

web studio951.net
a 774 02 477 1666
f ax 402 477 1667
100 P Street, Suite 203, Lincoln, ne 68501

©studio951 Ltd.

This Drawing and associated specifications
Is copyright as dated and shall remain in
the property of the Architect. No part of
these documents shall be reproduced in
any form or by any means without written
permission from the Architect.

Job No.> 11-047

A2.24-1

Adedda 01

Drawing released> 1 Feb 2012

UNIT F DOOR & FRAME SCHEDULE

MARK	DOOR						FRAME			HARDWARE										REMARKS	
	WIDTH	HEIGHT	THICKNESS	MATERIAL	FINISH	TYPE	MATERIAL	FINISH	BUTTS	LOCK	CLOSER	KICK PLATE	PULL	PUSH	EXIT DEVICE	FLOOR STOP	WALL STOP	THRESHOLD	FINISH		FIRE RATING
1	3'-0"	6'-8"	1 3/4"	MAS	PT	D	HM	PT	3	ENTRANCE	•						•		BRZ	20	
2	PR 2'-6"	6'-8"	1 1/4"	VINYL	PF	H	VINYL	PF		ENTRANCE									BRZ	--	SLIDER
3	2'-10"	6'-8"	1 3/8"	MAS	PT	D	WD	PF	3	PRIVACY									BRZ	--	
4	2'-6"	6'-8"	1 3/8"	MAS	PT	D	WD	PF	3	PASSAGE									BRZ	--	
5	2'-10"	6'-8"	1 3/8"	MAS	PT	D	WD	PF	3	BEDROOM									BRZ	--	
6	2'-0"	6'-8"	1 3/8"	MAS	PT	D	WD	PF	3	PASSAGE									BRZ	--	
7	4 @ 1'-0"	6'-8"	1 3/8"	MAS	PT	G	WD	PF	3	PASSAGE									BRZ	--	48" BI-FOLD
8	2'-10"	6'-8"	1 3/8"	MAS	PT	D	WD	PF	3	PRIVACY									BRZ	--	
9	2'-10"	6'-8"	1 3/8"	MAS	PT	D	WD	PF	3	BEDROOM									BRZ	--	
10	3'-0"	6'-8"	1 3/4"	WD	PF	D	HM	PT	3	ENTRANCE	•								BRZ	20	

UNIT F ROOM FINISH SCHEDULE

No	ROOM NAME	FLOOR	BASE	WALLS				CEILING	REMARKS
				NORTH	SOUTH	EAST	WEST	MATERIAL	
	UNIT F2	CONC		G.W.B.-PT	G.W.B.-PT	G.W.B.-PT	G.W.B.-PT	G.W.B.-PT	
F101	ENTRY	CARPET	WD	G.W.B.-PT	G.W.B.-PT	G.W.B.-PT	G.W.B.-PT	G.W.B.-TXT	
F102	BATH	VINYL	WD	G.W.B.-PT	G.W.B.-PT	G.W.B.-PT	G.W.B.-PT	G.W.B.-TXT	
F103	W.I.C.	CARPET	WD	G.W.B.-PT	G.W.B.-PT	G.W.B.-PT	G.W.B.-PT	G.W.B.-TXT	
F104	BED RM	CARPET	WD	G.W.B.-PT	G.W.B.-PT	G.W.B.-PT	G.W.B.-PT	G.W.B.-TXT	
F105	LIVING-DINING RM	CARPET	WD	G.W.B.-PT	G.W.B.-PT	G.W.B.-PT	G.W.B.-PT	G.W.B.-TXT	
F106	KITCHEN	TILE	WD	G.W.B.-PT	G.W.B.-PT	G.W.B.-PT	G.W.B.-PT	G.W.B.-TXT	
F108	LAUNDRY	TILE	WD	G.W.B.-PT	G.W.B.-PT	G.W.B.-PT	G.W.B.-PT	G.W.B.-TXT	
F109	W.I.C.	CARPET	WD	G.W.B.-PT	G.W.B.-PT	G.W.B.-PT	G.W.B.-PT	G.W.B.-TXT	
F110	BATH	VINYL	WD	G.W.B.-PT	G.W.B.-PT	G.W.B.-PT	G.W.B.-PT	G.W.B.-TXT	
F110	MECH.	NA	NA	G.W.B.-PT	G.W.B.-PT	G.W.B.-PT	G.W.B.-PT	G.W.B.	
F111	BED RM	CARPET	WD	G.W.B.-PT	G.W.B.-PT	G.W.B.-PT	G.W.B.-PT	G.W.B.-TXT	
F112	MUD ROOM	TILE	WD	G.W.B.-PT	G.W.B.-PT	G.W.B.-PT	G.W.B.-PT	G.W.B.-TXT	

NOTE: FOR CEILING HEIGHTS SEE SECTIONS A3.10-A3.22

VILLAGE ON THE PRESERVE - PHASE 2

NEW MULTIFAMILY HOUSING
186TH & WRIGHT STREETS
OMAHA, NEBRASKA

UNIT F DOOR SCHEDULE

no scale

studio
951

web: studio951.net
a: 402.477.1666
f: 402.477.1667
1000 F Street, Suite 303, Lincoln, NE 68503

©studio951 Ltd.

This Drawing and associated specifications is copyright as dated and shall remain in the property of the Architect. No part of these documents shall be reproduced in any form or by any means without written permission from the Architect.

Job No. > 11-047

A2.25-1

Addedda 01
Drawing released > 1 Feb 2012

UNIT F2 DOOR & FRAME SCHEDULE

MARK	DOOR						FRAME		HARDWARE										FIRE RATING	REMARKS	
	WIDTH	HEIGHT	THICKNESS	MATERIAL	FINISH	TYPE	MATERIAL	FINISH	BUTTS	LOCK	CLOSER	KICK PLATE	PULL	PUSH	EXIT DEVICE	FLOOR STOP	WALL STOP	THRESHOLD			FINISH
1	3'-0"	6'-8"	1 3/4"	MAS	PT	D	HM	PT	3	ENTRANCE	•						•		BRZ	20	
2	PR 2'-6"	6'-8"	1 1/4"	VINYL	PF	H	VINYL	PF		ENTRANCE									BRZ	--	SLIDER
3	2'-10"	6'-8"	1 3/8"	MAS	PT	D	W	PF	3	PRIVACY							•		BRZ	--	
4	2'-6"	6'-8"	1 3/8"	MAS	PT	D	W	PF	3	PASSAGE							•		BRZ	--	
5	2'-10"	6'-8"	1 3/8"	MAS	PT	D	W	PF	3	BEDROOM							•		BRZ	--	
6	2'-10"	6'-8"	1 3/8"	MAS	PT	D	W	PF	3	BEDROOM							•		BRZ	--	
7	2'-10"	6'-8"	1 3/8"	MAS	PT	D	W	PF	3	PRIVACY							•		BRZ	--	
8	PR 1'-6"	6'-8"	1 3/8"	MAS	PT	F	WD	PF	3	PASSAGE									BRZ	--	36" BI-FOLD
9	3'-0"	6'-8"	1 3/4"	WD	PF	D	HM	PT	3	ENTRANCE	•						•		BRZ	20	
10	2'-0"	6'-8"	1 3/8"	MAS	PT	D	W	PF	3	PASSAGE									BRZ	--	

UNIT F2 ROOM FINISH SCHEDULE

NO	ROOM NAME	FLOOR	BASE	WALLS				CEILING	REMARKS
				NORTH	SOUTH	EAST	WEST	MATERIAL	
F101	ENTRY	CARPET	WD	G.W.B.-PT	G.W.B.-PT	G.W.B.-PT	G.W.B.-PT	G.W.B.-TXT	
F102	BATH	VINYL	WD	G.W.B.-PT	G.W.B.-PT	G.W.B.-PT	G.W.B.-PT	G.W.B.-TXT	
F103	W.I.C.	CARPET	WD	G.W.B.-PT	G.W.B.-PT	G.W.B.-PT	G.W.B.-PT	G.W.B.-TXT	
F104	BED RM	CARPET	WD	G.W.B.-PT	G.W.B.-PT	G.W.B.-PT	G.W.B.-PT	G.W.B.-TXT	
F105	LIVING-DINING RM	CARPET	WD	G.W.B.-PT	G.W.B.-PT	G.W.B.-PT	G.W.B.-PT	G.W.B.-TXT	
F106	KITCHEN	TILE	WD	G.W.B.-PT	G.W.B.-PT	G.W.B.-PT	G.W.B.-PT	G.W.B.-TXT	
F107	MUD ROOM	TILE	WD	G.W.B.-PT	G.W.B.-PT	G.W.B.-PT	G.W.B.-PT	G.W.B.-TXT	
F108	LAUNDRY	TILE	WD	G.W.B.-PT	G.W.B.-PT	G.W.B.-PT	G.W.B.-PT	G.W.B.-TXT	
F109	W.I.C.	CARPET	WD	G.W.B.-PT	G.W.B.-PT	G.W.B.-PT	G.W.B.-PT	G.W.B.-TXT	
F110	BATH	VINYL	WD	G.W.B.-PT	G.W.B.-PT	G.W.B.-PT	G.W.B.-PT	G.W.B.-TXT	
F111	BED RM	CARPET	WD	G.W.B.-PT	G.W.B.-PT	G.W.B.-PT	G.W.B.-PT	G.W.B.-TXT	
F112	MECH.	NA	NA	G.W.B.-PT	G.W.B.-PT	G.W.B.-PT	G.W.B.-PT	G.W.B.	

NOTE: FOR CEILING HEIGHTS SEE SECTIONS A3.10-A3.22

VILLAGE ON THE PRESERVE - PHASE 2

NEW MULTIFAMILY HOUSING
186TH & WRIGHT STREETS
OMAHA, NEBRASKA

UNIT F2 DOOR SCHEDULE

no scale

studio
951

web: studio951.net
off: 402.477.1666
fax: 402.477.1667
1000 P Street, Suite 303, Lincoln, NE 68501

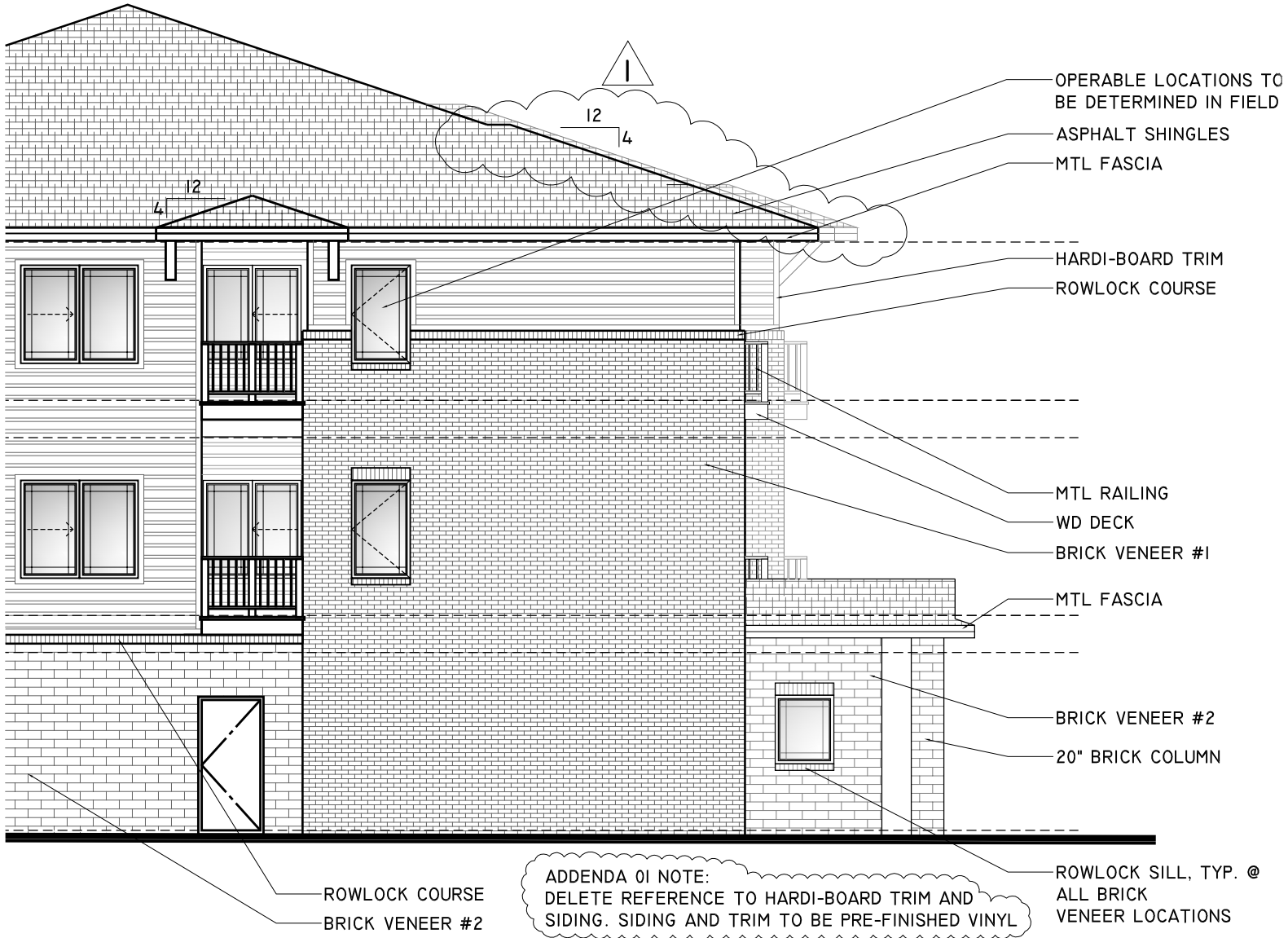
©studio951 Ltd.

This Drawing and associated specifications is copyright as dated and shall remain in the property of the Architect. No part of these documents shall be reproduced in any form or by any means without written permission from the Architect.

Job No. > 11-047

A2.26-1

Addedda 01
Drawing released > 1 Feb 2012



ADDENDA 01 NOTE:
 DELETE REFERENCE TO HARDI-BOARD TRIM AND
 SIDING. SIDING AND TRIM TO BE PRE-FINISHED VINYL

VILLAGE ON THE PRESERVE - PHASE 2	
NEW MULTIFAMILY HOUSING 186TH & WRIGHT STREETS OMAHA, NEBRASKA	
SIDE ELEVATION - PARTIAL	1/8" = 1' - 0"

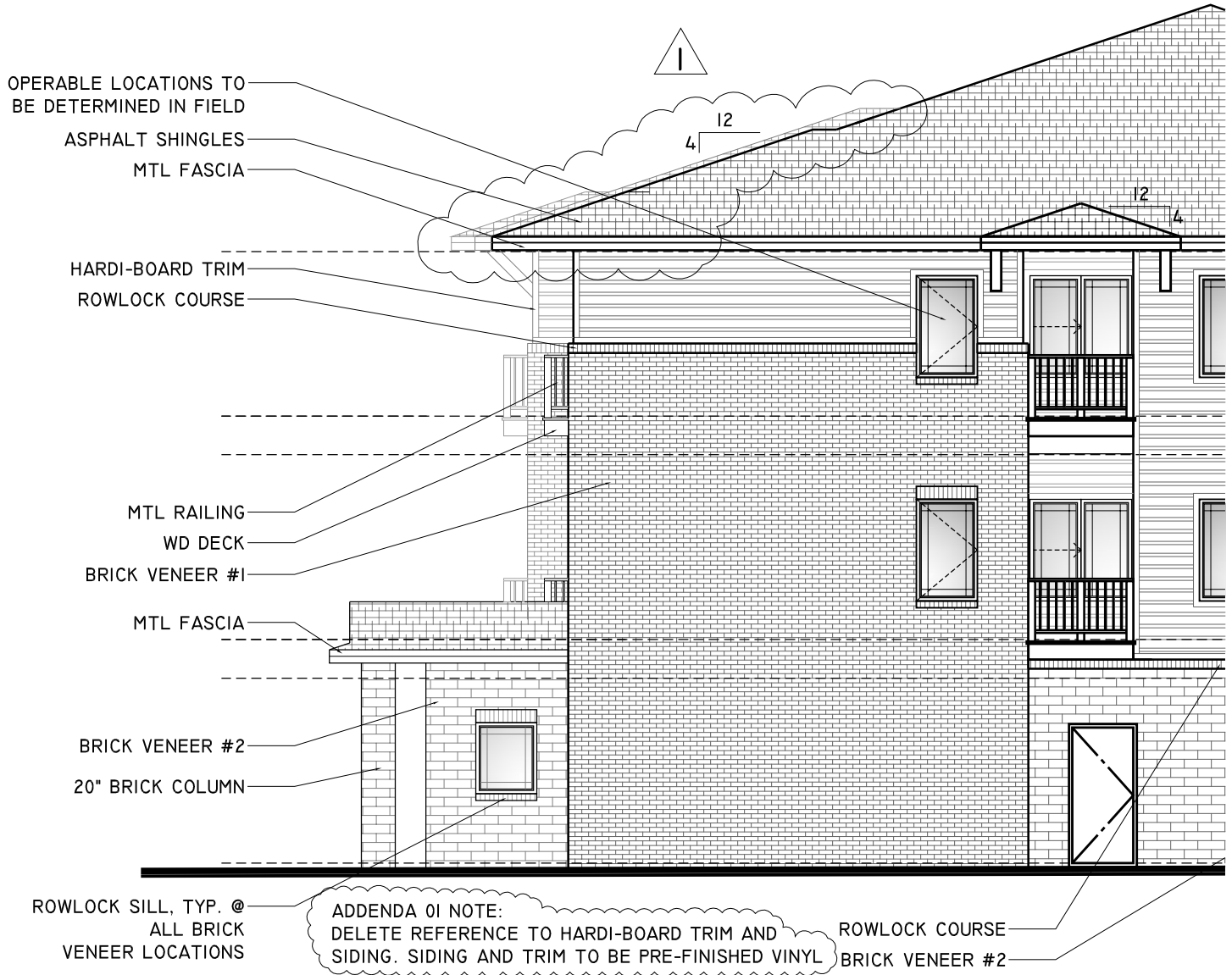
studio
 951

web: studio951.net
 a: 774-02-4771666
 fax: 402-4771667
 1100 P Street, Suite 203, Lincoln, NE 68508

©studio951 Ltd.
 This Drawing and associated specifications
 is copyright as dated and shall remain in
 the property of the Architect. No part of
 these documents shall be reproduced in
 any form or by any means without written
 permission from the Architect.

Job No. > 11-047

A3.01-1
 Addedda 01
 Drawing released > 1 Feb 2012



ADDENDA 01 NOTE:
 DELETE REFERENCE TO HARDI-BOARD TRIM AND
 SIDING. SIDING AND TRIM TO BE PRE-FINISHED VINYL

VILLAGE ON THE PRESERVE - PHASE 2	
NEW MULTIFAMILY HOUSING 186TH & WRIGHT STREETS OMAHA, NEBRASKA	
SIDE ELEVATION - PARTIAL	1/8" = 1' - 0"

studio
951

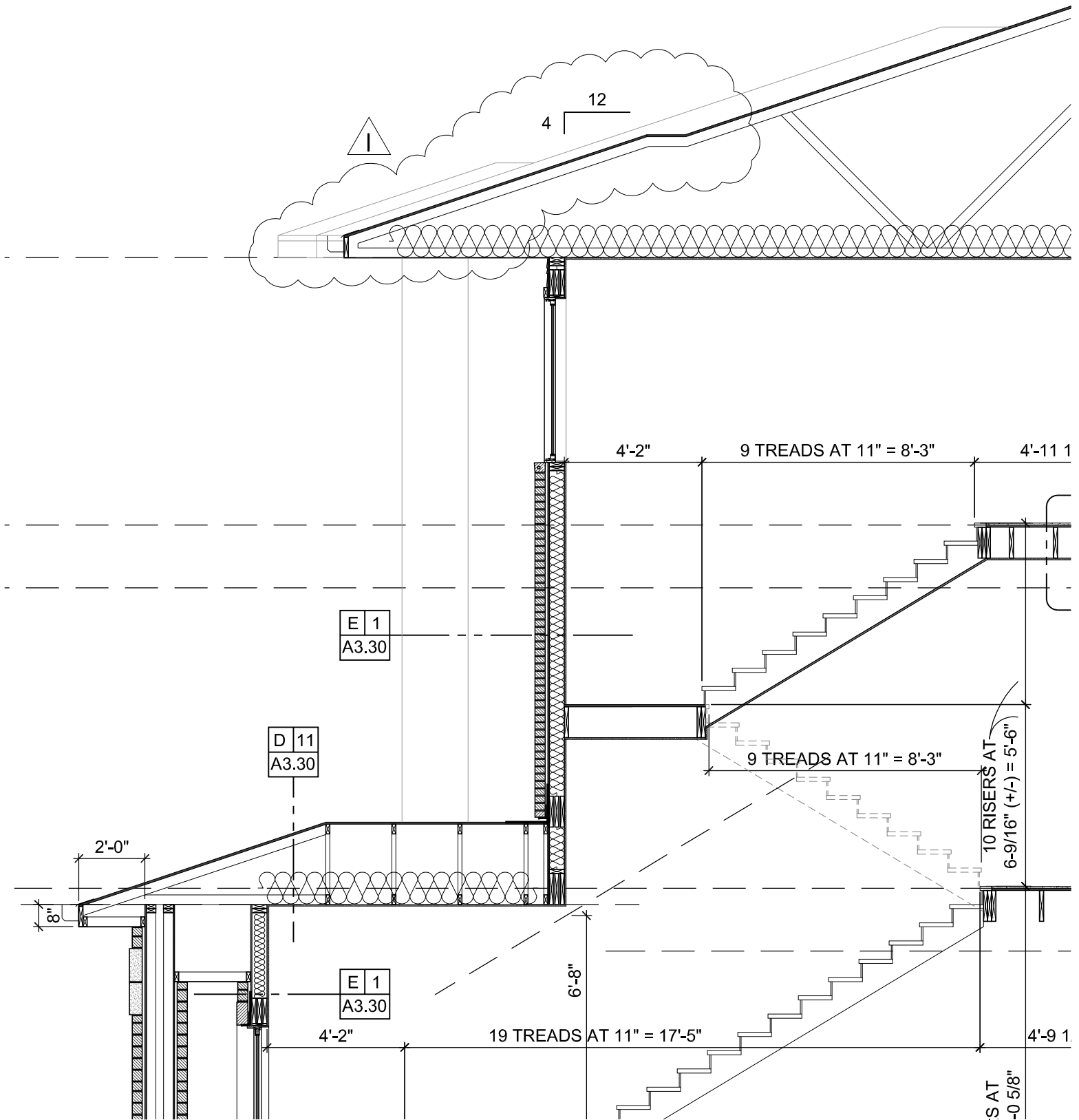
web studio951.net
 474-02-477-1666
 fax 402-477-1667
 1000 P Street, Suite 200, Lincoln, ne 68503


©studio951 Ltd.
 This Drawing and associated specifications
 is copyright as dated and shall remain in
 the property of the Architect. No part of
 these documents shall be reproduced in
 any form or by any means without written
 permission from the Architect.

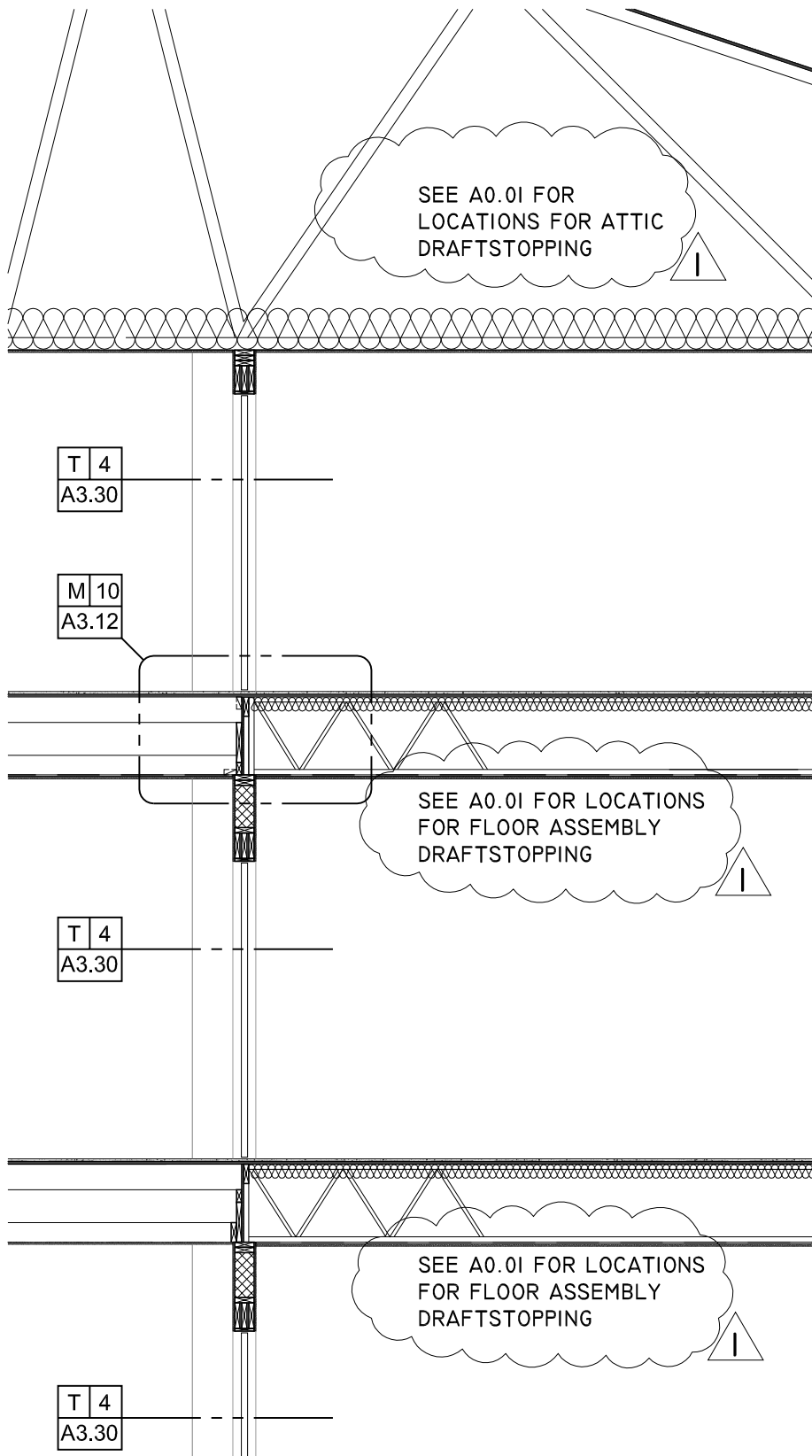
Job No.> 11-047

A3.01-2

Addedda 01
 Drawing released> 1 Feb 2012



<p>VILLAGE ON THE PRESERVE - PHASE 2</p>	 <p>web: studio951.net a 774 02 477 1666 fax 402 477 1667 1100 P Street, Suite 203, Lincoln, ne 68508</p>	<p>©studio951 Ltd. This Drawing and associated specifications is copyright as dated and shall remain in the property of the Architect. No part of these documents shall be reproduced in any form or by any means without written permission from the Architect.</p>
<p>NEW MULTIFAMILY HOUSING 186TH & WRIGHT STREETS OMAHA, NEBRASKA</p>		<p>Job No. > 11-047</p> <p>A3.12-1</p> <p>Adedda 01 Drawing released > 1 Feb 2012</p>
<p>BUILDING SECTION - PARTIAL VIEW</p> <p>1/4" = 1' - 0"</p>		



VILLAGE ON THE PRESERVE - PHASE 2	
NEW MULTIFAMILY HOUSING 186TH & WRIGHT STREETS OMAHA, NEBRASKA	
BUILDING SECTION - PARTIAL VIEW	1/4" = 1' - 0"

studio
951

web: studio951.net
a 774 02 477 1666
f ax 402 477 1667
100 P Street, Suite 200, Lincoln, ne 68508

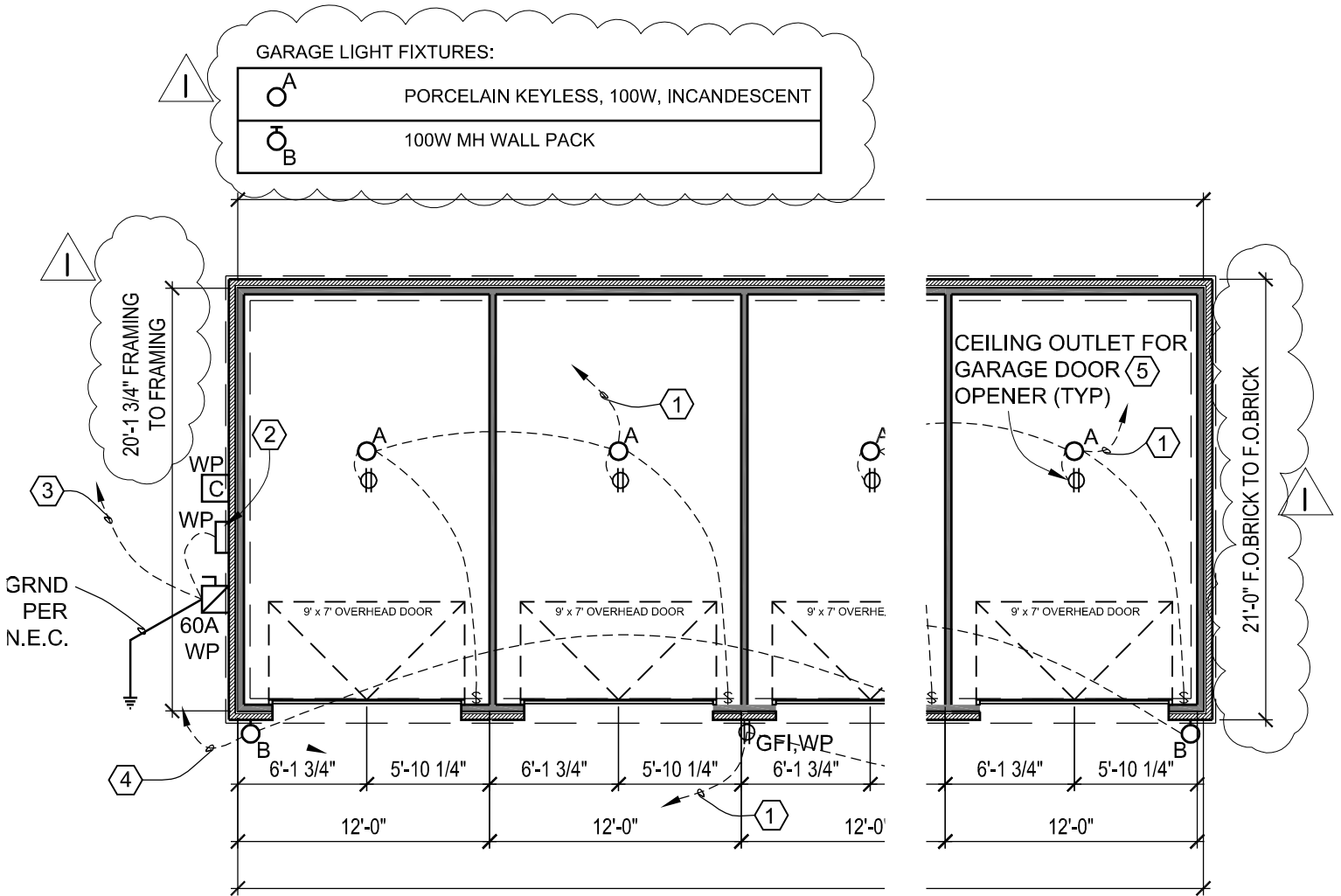
©studio951 Ltd.
This Drawing and associated specifications
is copyright as dated and shall remain in
the property of the Architect. No part of
these documents shall be reproduced in
any form or by any means without written
permission from the Architect.

Job No.> 11-047

A3.12-2
Addedda 01
Drawing released> 1 Feb 2012

GARAGE LIGHT FIXTURES:

⊙ ^A	PORCELAIN KEYLESS, 100W, INCANDESCENT
⊙ ^B	100W MH WALL PACK



VILLAGE ON THE PRESERVE - PHASE 2

NEW MULTIFAMILY HOUSING
 186TH & WRIGHT STREETS
 OMAHA, NEBRASKA

8 UNIT GARAGE PLAN - PARTIAL VIEW

1/4" = 1' - 0"



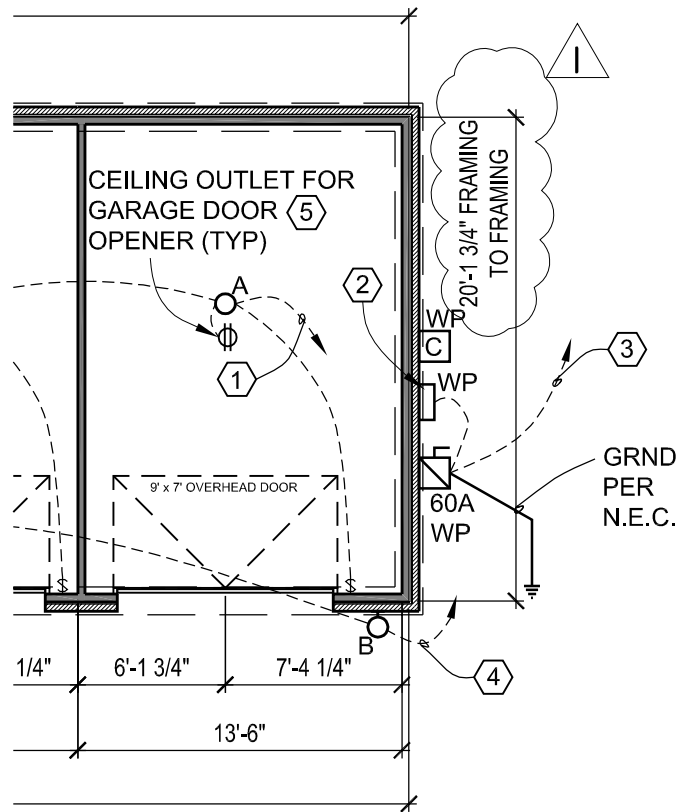
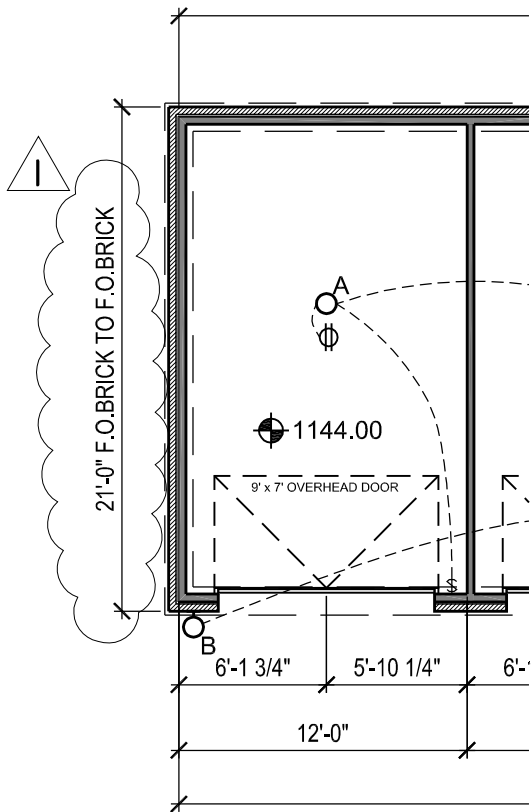
web: studio951.net
 a: 742-477-1666
 f: 402-477-1667
 1100 P Street, Suite 203, Lincoln, ne 68508

©studio951 Ltd.
 This Drawing and associated specifications
 is copyright as dated and shall remain
 in the property of the Architect. No part
 of these documents shall be reproduced
 in any form or by any means without
 permission from the Architect.

Job No. > 11-047

A4.01-1

Adedda 01
 Drawing released > 1 Feb 2012



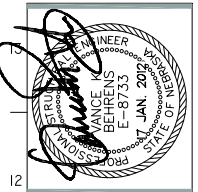
GARAGE LIGHT FIXTURES:

○ ^A	PORCELAIN KEYLESS, 100W, INCANDESCENT
○ ^B	100W MH WALL PACK

<p>VILLAGE ON THE PRESERVE - PHASE 2</p> <p>NEW MULTIFAMILY HOUSING 186TH & WRIGHT STREETS OMAHA, NEBRASKA</p>	<p>web: studio951.net a 774 02 477 1666 fax 402 477 1667 100 P Street, Suite 203, Lincoln, ne 68508</p>	<p>©studio951 Ltd. This Drawing and associated specifications is copyright as dated and shall remain in the property of the Architect. No part of these documents shall be reproduced in any form or by any means without written permission from the Architect.</p> <p>Job No. > 11-047</p> <p style="font-size: 24px; font-weight: bold; text-align: center;">A4.02-1</p> <p>Addedda 01 Drawing released > 1 Feb 2012</p>
<p>15 UNIT GARAGE PLAN - PARTIAL VIEW</p>	<p>1/4" = 1' - 0"</p>	



studio 951 Ltd.
 THIS DRAWING AND ASSOCIATED SPECIFICATIONS IS COPYRIGHT AS BATES AND SHALL REMAIN IN THE PROPERTY OF THE ARCHITECT. NO PART OF THESE DOCUMENTS SHALL BE REPRODUCED IN ANY FORM OR BY ANY MEANS WITHOUT WRITTEN PERMISSION FROM THE ARCHITECT.



structural [design] group
 1001 Grand Building
 1001 Grand Building
 Lincoln, Nebraska 68508
 P: 402.438.7788
 F: 402.438.7750

VILLAGE ON THE PRESERVE - PHASE 2
 NEW MULTIFAMILY HOUSING
 186TH & WRIGHT STREET
 OMAHA, NE
 ROOF FRAMING PLAN & SCHEDULES

NO.	ISSUED FOR	DATE
01	Permits	2011.08.05
02	Revisions	2011.11.11
03	Revisions	2011.11.12
04	Revisions	2011.11.29
05	Revisions	2011.11.30
06	Permit Set	2012.01.17
07	Appendix B	2012.01.31

Job No > II-345 01/17/12

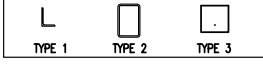
S2.4

SHEATHING ATTACHMENT SCHEDULE

LOCATION	SHEATHING	FASTENER SIZE	FASTENER SPA. @ PERIMETER OF SHEATHING DECK	FASTENER SPACING @ EDGES OVER FRAMING	BLOCKING/ BRIDGING REQUIRED	FASTENER SPA. @ EDGES OVER BLOCKING	SIMPSON HOLD-DOWN REQ'D.	ANCHOR BOLT REQ'D @ HOLD-DOWN	GLUE REQ'D.
WALLS TYP.	7/16" EXP. 1 PLYWD OR OSB	8d	6" O.C.	6" O.C.	NONE	6" O.C.	NONE	NONE	NONE
SHEAR WALL 1 (SW1)	7/16" EXP. 1 PLYWD OR OSB	8d	6" O.C.	6" O.C.	NONE	6" O.C.	HDU2-SDS2.5	5/8" GALV. 8" EMBED	NONE
SHEAR WALL 2 (SW2)	7/16" EXP. 1 PLYWD OR OSB	8d	6" O.C.	6" O.C.	NONE	6" O.C.	HDU8-SDS2.5	7/8" GALV. 8" EMBED	NONE
ROOF TYP.	19/32" EXP. 1 PLYWD OR OSB	8d	6" O.C.	6" O.C.	NONE	6" O.C.	NONE	NONE	YES

LINTEL SCHEDULE

MARK	BEARING	TYPE	DESCRIPTION	REMARKS
L-1	8"	1	GALV. L5x3 1/2x5/16	
L-2	-	2	GALV. HSS6x4x1/4	(2) CRIPPLE STUDS @ BRG.
L-3	-	3	(1) #5 CONT.	

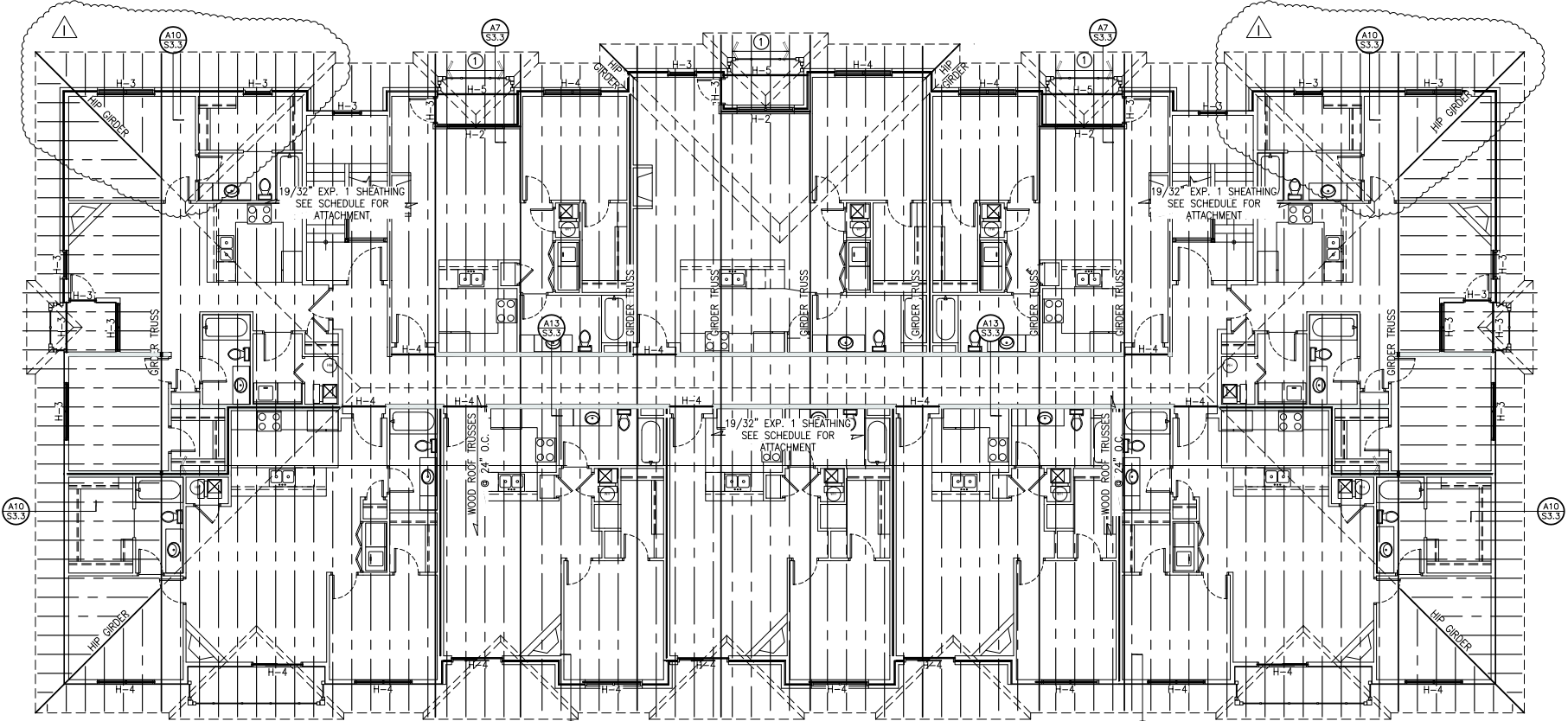
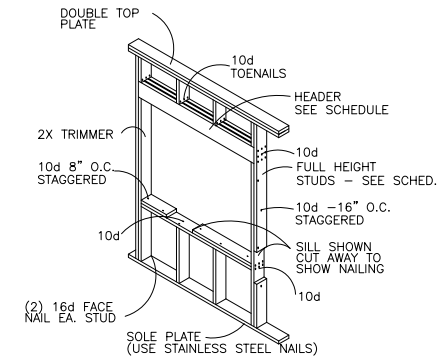
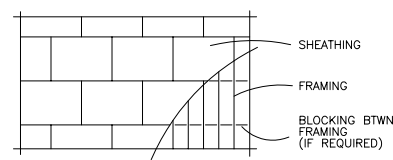
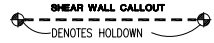


WOOD HEADER SCHEDULE

MK NO	SIZE	NO. OF STUDS EA. JAMB *		SILL - AS REQ'D.	REMARKS
		TRIMMERS	FULL HEIGHT		
H-1	3-1 3/4"x14" LVL	2	2	2-2x6	SEE DETAIL FOR LINTEL ATTACHMENT @ GARAGE
H-2	3-1 3/4"x11 7/8" LVL	2	2	2-2x6	
H-3	3-2x8 SPF #2	1	2	2-2x6	
H-4	3-2x10 SPF #2	2	2	2-2x6	
H-5	3-2x12 SPF #2	2	2	2-2x6	
H-6	3-2x12 SP #2	2	-	2-2x6	

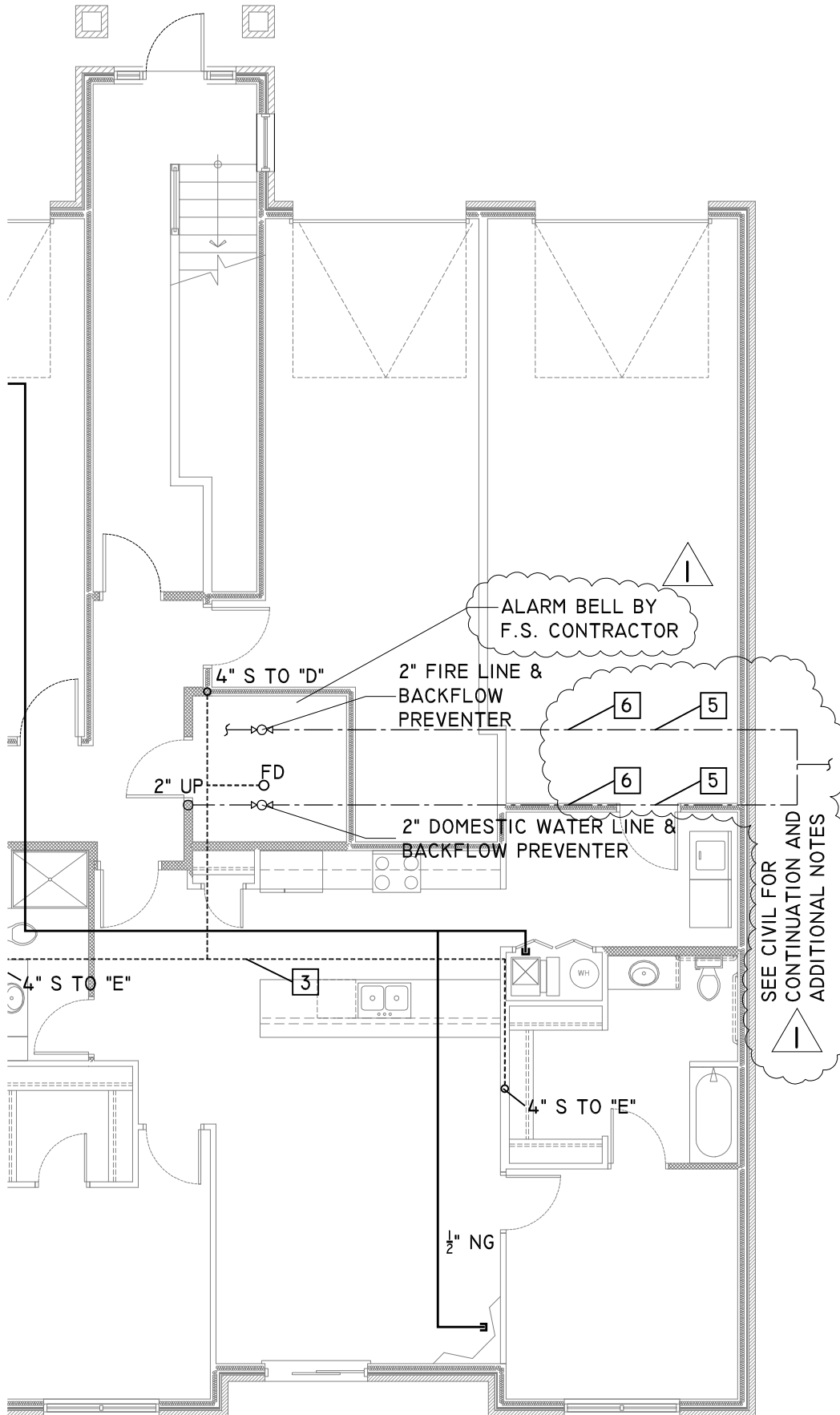
NOTES:

- SCREWS / NAILS: USE CORROSION RESISTANT OR STAINLESS STEEL.
- SPACE NAILS/SCREWS/STAPLES @ STUDS NOT FALLING @ SHEATHING EDGE @ 1'-0" O.C.
- SEE GENERAL NOTES FOR SHEATHING TYPE, THICKNESS, VENEER GRADES, SPAN INDEX, AND OTHER INSTALLATION REQUIREMENTS.
- BRIDGING WHEN REQUIRED SHALL BE U-CHANNEL FOR METAL STUD SYSTEMS AND SOLID WOOD BLOCKING SAME SIZE AS STUDS FOR WOOD STUD SYSTEMS.
- GLUE FOR JOINT BETWEEN PLYWOOD AND STUD/BLOCKING SHALL CONFORM TO APA SPECIFICATION AFG-01. PROVIDE 3/8" DIA. BEAD WHERE GLUE IS REQUIRED. TONGUE AND GROOVE JOINTS SHALL ALSO BE GLUED WHERE GLUING IS REQUIRED.

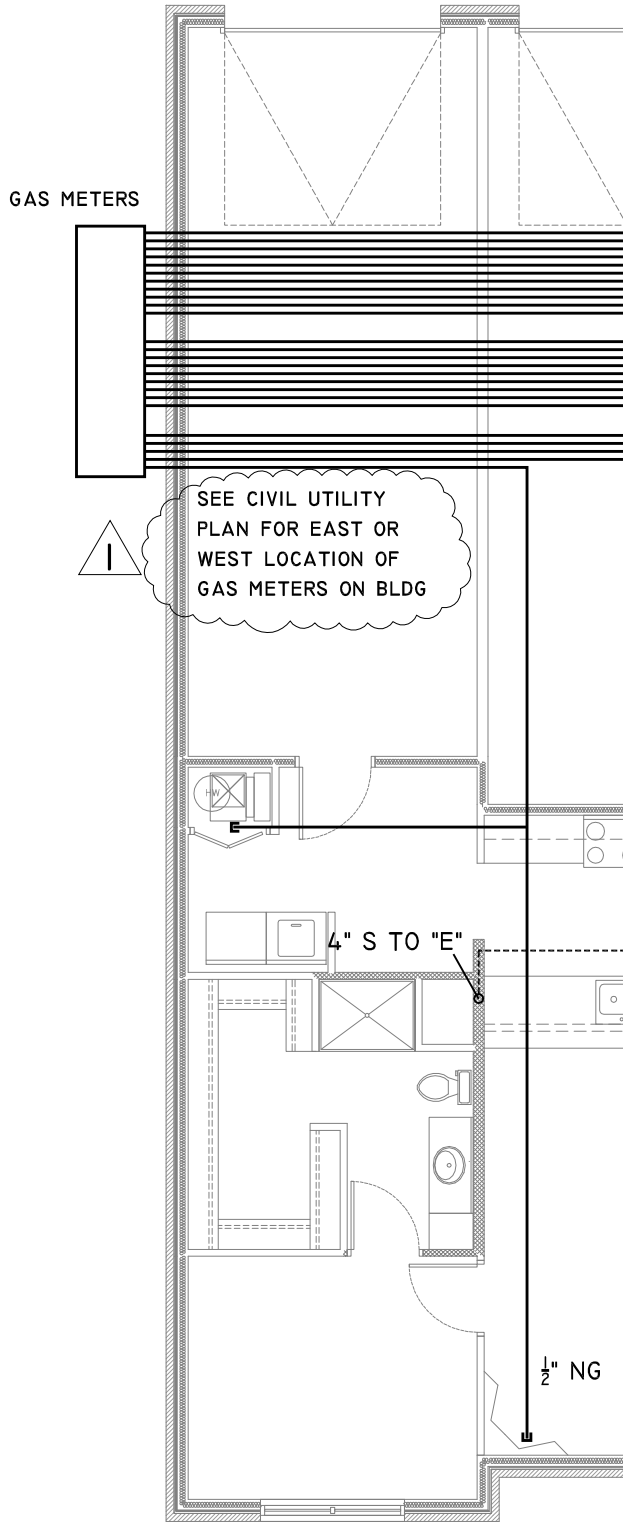


- WOOD ROOF TRUSSES @ 2'-0" O.C.
- 2x8 SP #2 @ 16" O.C.
- 2x12 SPF #2 @ 19.2" O.C.
- 2x12 SPF #2 @ 12" O.C.

ROOF FRAMING PLAN
 SCALE: 1/8" = 1' - 0"

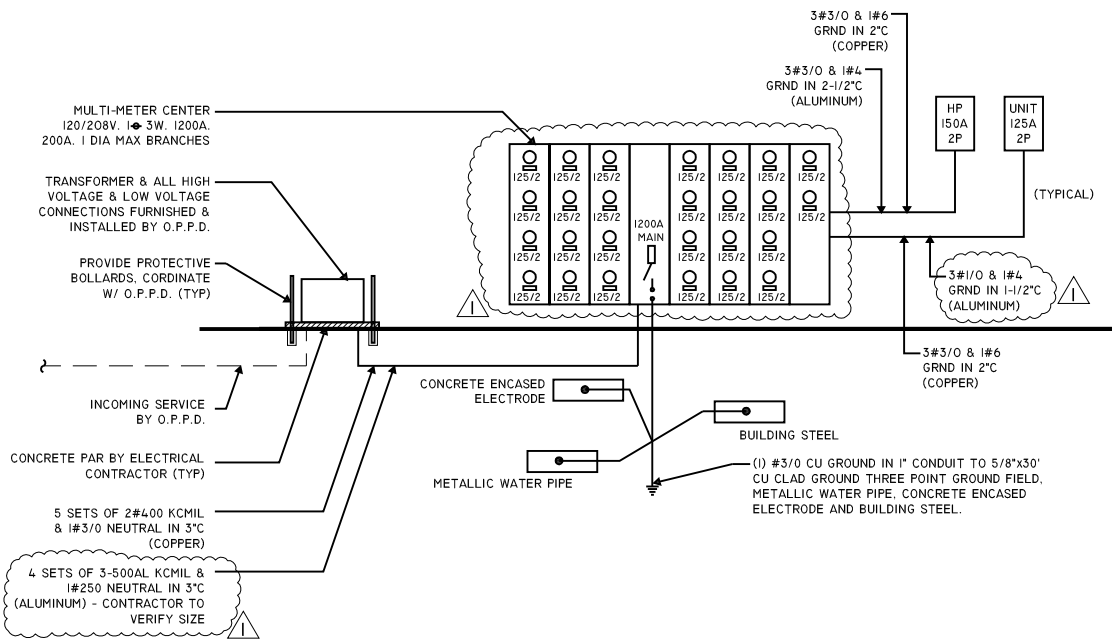


Project Title: Village on the Preserve - Phase 2		Page Description: MAIN FLOOR OVERALL PLUMBING PLAN - PARTIAL VIEW	
Date Issued: 17 JAN 2012	Date Revised: ADDENDA 01 31 JAN 2012	Omaha, Nebraska	
© COPYRIGHT - REUSE OR REPRODUCTION OF THIS DOCUMENT IS NOT PERMITTED WITHOUT WRITTEN PERMISSION			
P2.01-1			



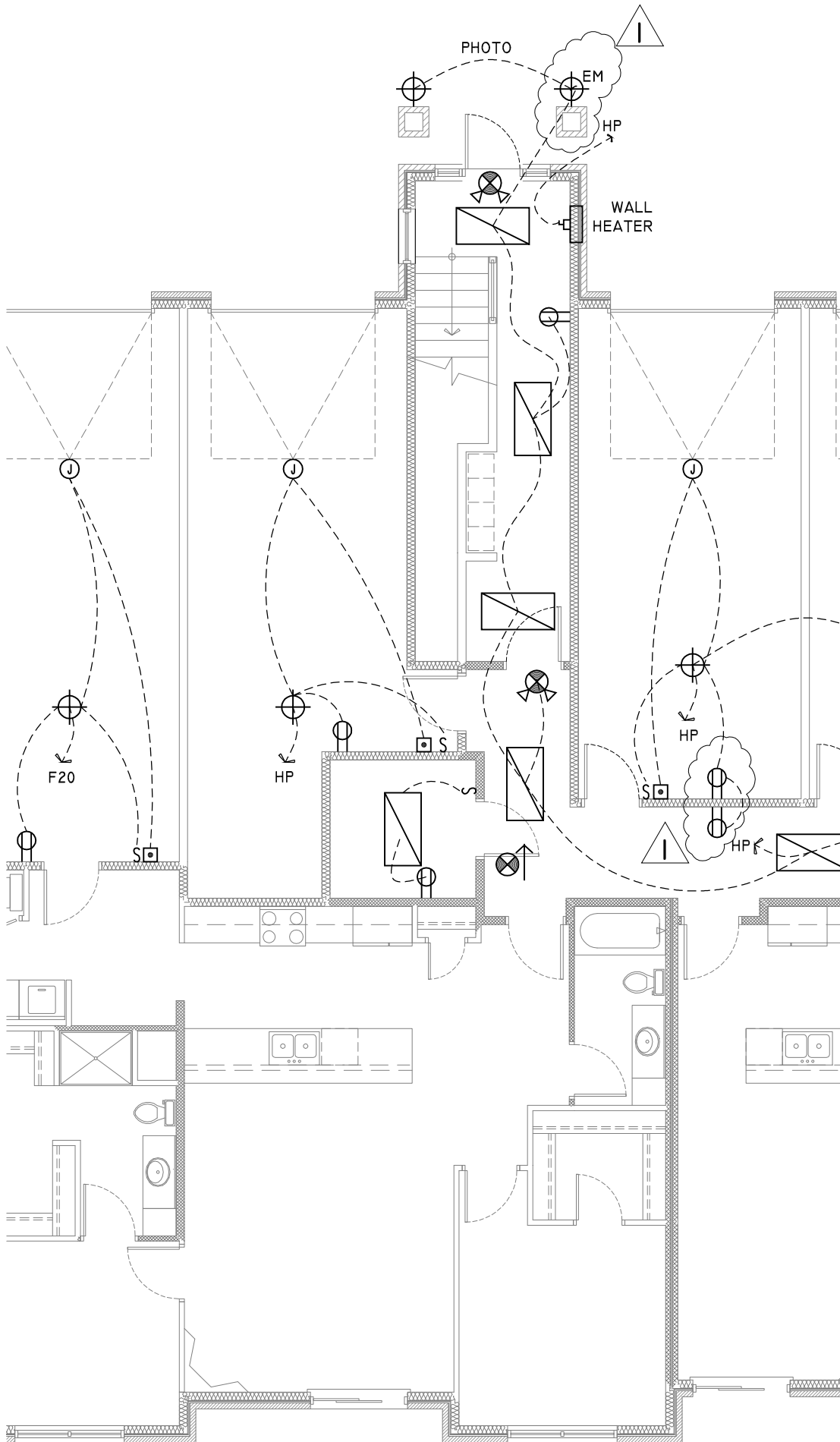
Project Title: Village on the Preserve - Phase 2 Omaha, Nebraska	
Date Issued: 17 JAN 2012	Date Revised: ADDENDA 01 31 JAN 2012
Page Description: MAIN FLOOR OVERALL PLUMBING PLAN - PARTIAL VIEW	
© COPYRIGHT - REUSE OR REPRODUCTION OF THIS DOCUMENT IS NOT PERMITTED WITHOUT WRITTEN PERMISSION	

P2.01-2



Project Title: Village on the Preserve - Phase 2 Omaha, Nebraska		Page Description: ELECTRICAL RISER
Date Issued: 17 JAN 2012	Date Revised: ADDENDA 01 31 JAN 2012	
© COPYRIGHT - REUSE OR REPRODUCTION OF THIS DOCUMENT IS NOT PERMITTED WITHOUT WRITTEN PERMISSION		

E2.01-1



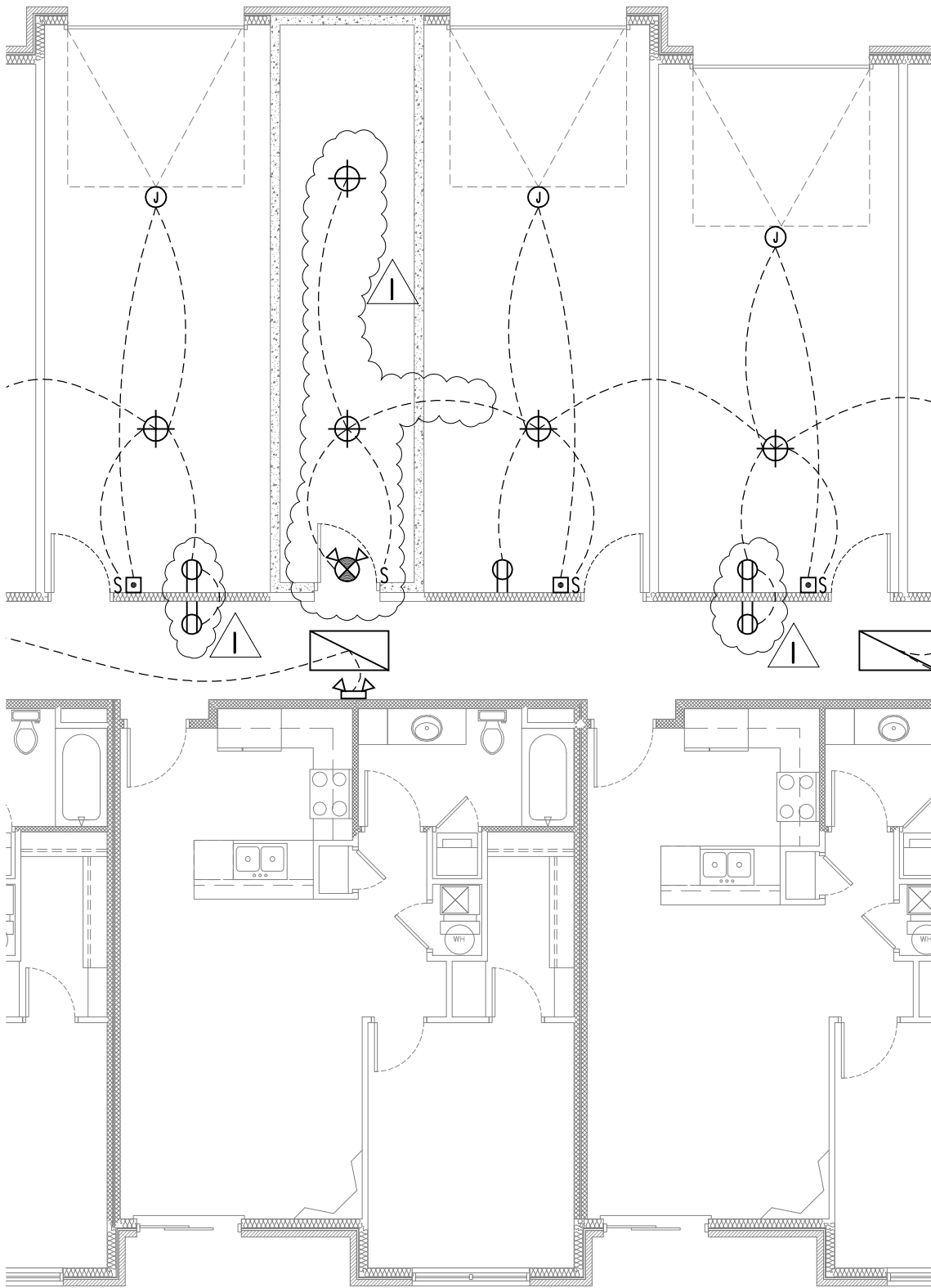
D18,20
CU2
UNIT F2
1ST FLOOR

D18,20
CUI
UNIT A
1ST FLOOR



Project Title: Village on the Preserve - Phase 2 Omaha, Nebraska	
Date Issued: 17 JAN 2012 Date Revised: ADDENDA 01 31 JAN 2012	Page Description: OVERALL ELECTRICAL PLAN - MAIN FLOOR PARTIAL VIEW
© COPYRIGHT - REUSE OR REPRODUCTION OF THIS DOCUMENT IS NOT PERMITTED WITHOUT WRITTEN PERMISSION	

E2.01-2



- J
 A
 LOOR
- D18,20
 CUI
 UNIT A
 2ND FLOOR
- D18,20
 CUI
 UNIT A
 2ND FLOOR
- D18,20
 CUI
 UNIT A
 1ST FLOOR
- D18,2
- CUI
 UNIT
 2ND

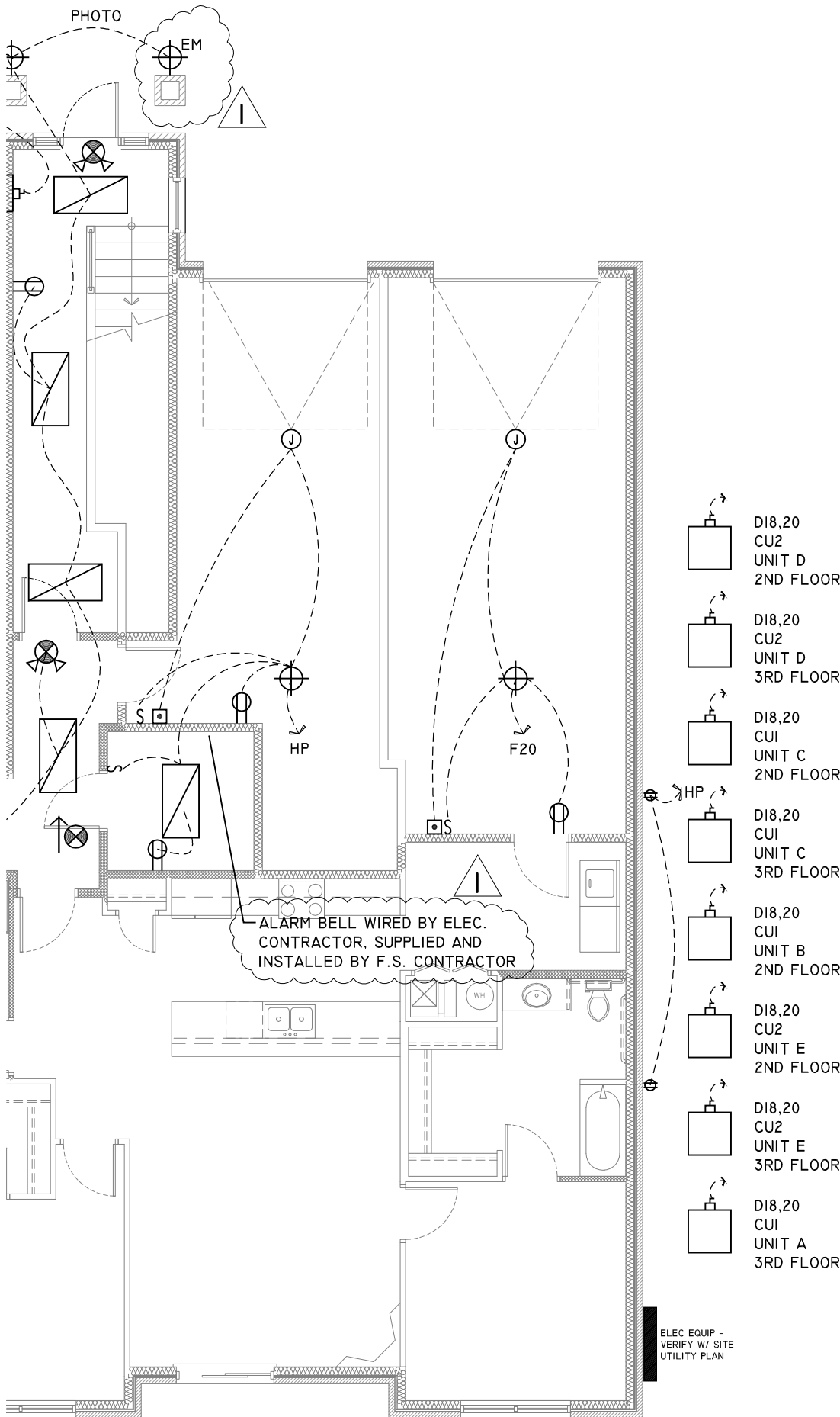


Date Issued: 17 JAN 2012	Project Title: Village on the Preserve - Phase 2 Omaha, Nebraska
Date Revised: ADDENDA 01 31 JAN 2012	Page Description: OVERALL ELECTRICAL PLAN - MAIN FLOOR PARTIAL VIEW
© COPYRIGHT - REUSE OR REPRODUCTION OF THIS DOCUMENT IS NOT PERMITTED WITHOUT WRITTEN PERMISSION	

E2.01-3



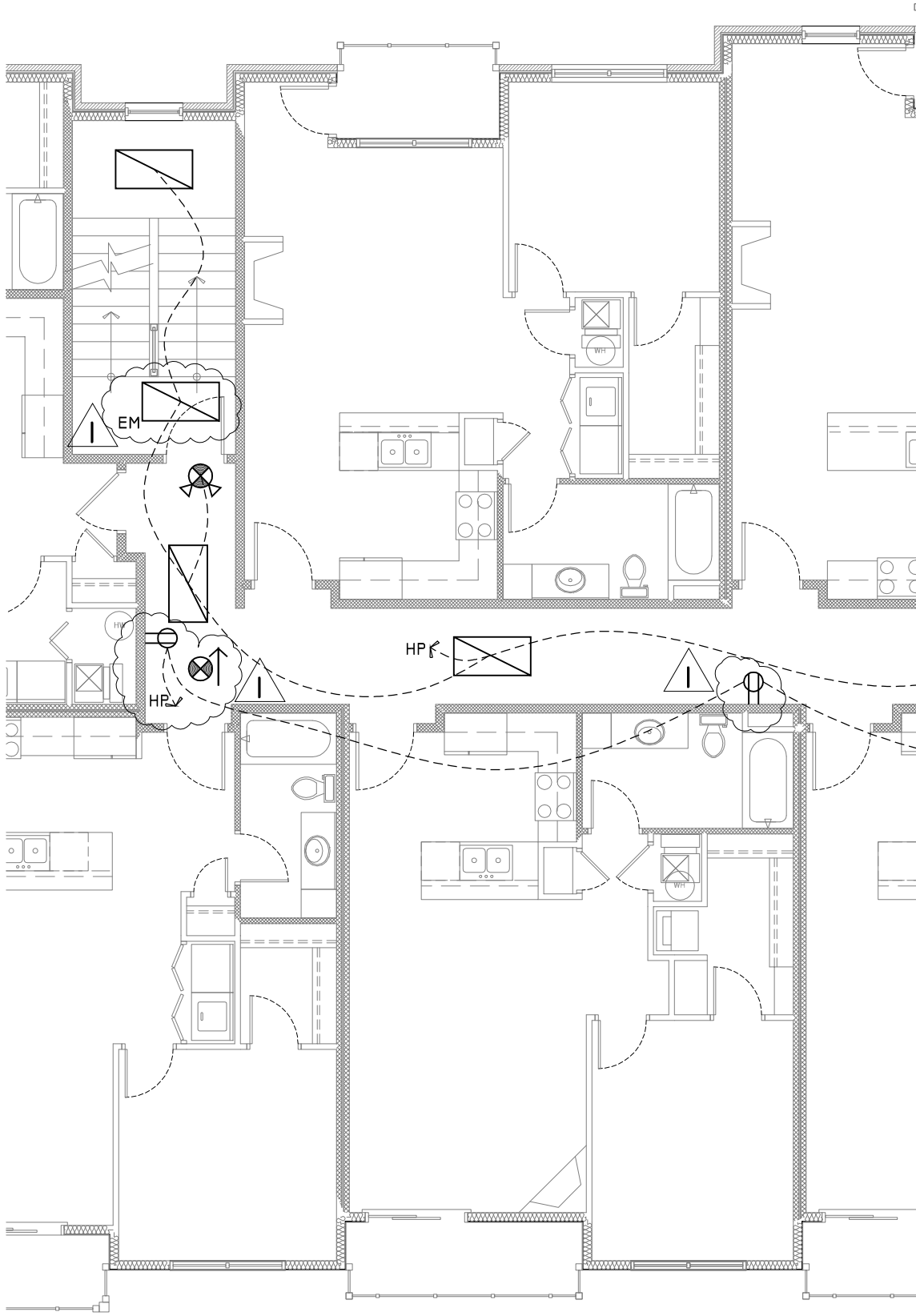
Project Title: Village on the Preserve - Phase 2 Omaha, Nebraska	
Page Description: OVERALL ELECTRICAL PLAN - MAIN FLOOR PARTIAL VIEW	
Date Issued: 17 JAN 2012	Date Revised: ADDENDA 01 31 JAN 2012
© COPYRIGHT - REUSE OR REPRODUCTION OF THIS DOCUMENT IS NOT PERMITTED WITHOUT WRITTEN PERMISSION	



20
A
FLOOR

D18.20
CU2
UNIT F
1ST FLOOR

E2.01-4



Project Title:
Village on the Preserve - Phase 2
 Omaha, Nebraska

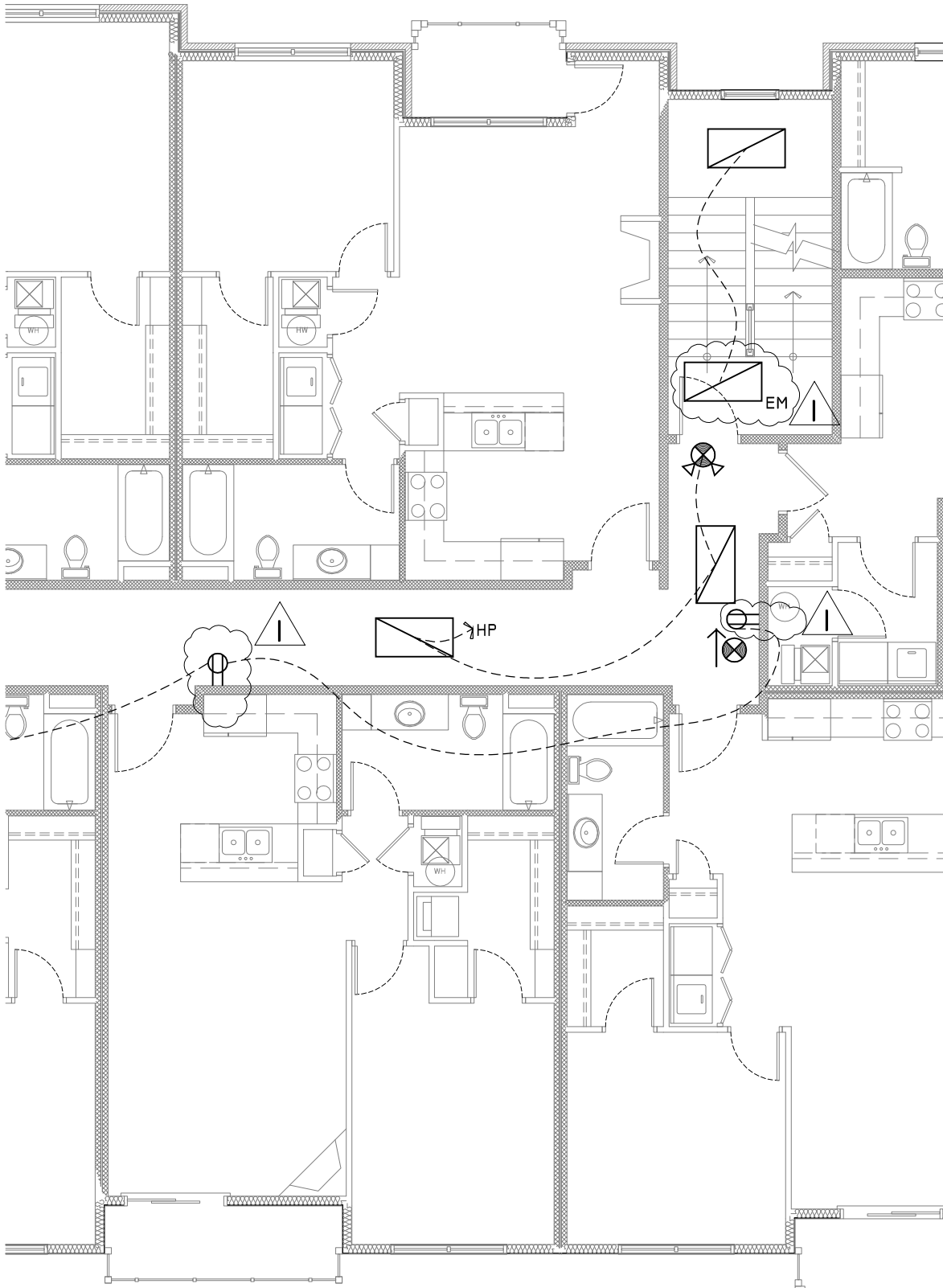
Page Description:
 OVERALL ELEC PLAN - 2ND FLOOR PARTIAL VIEW

Date Issued: 17 JAN 2012

Date Revised: ADDENDA 01
 31 JAN 2012

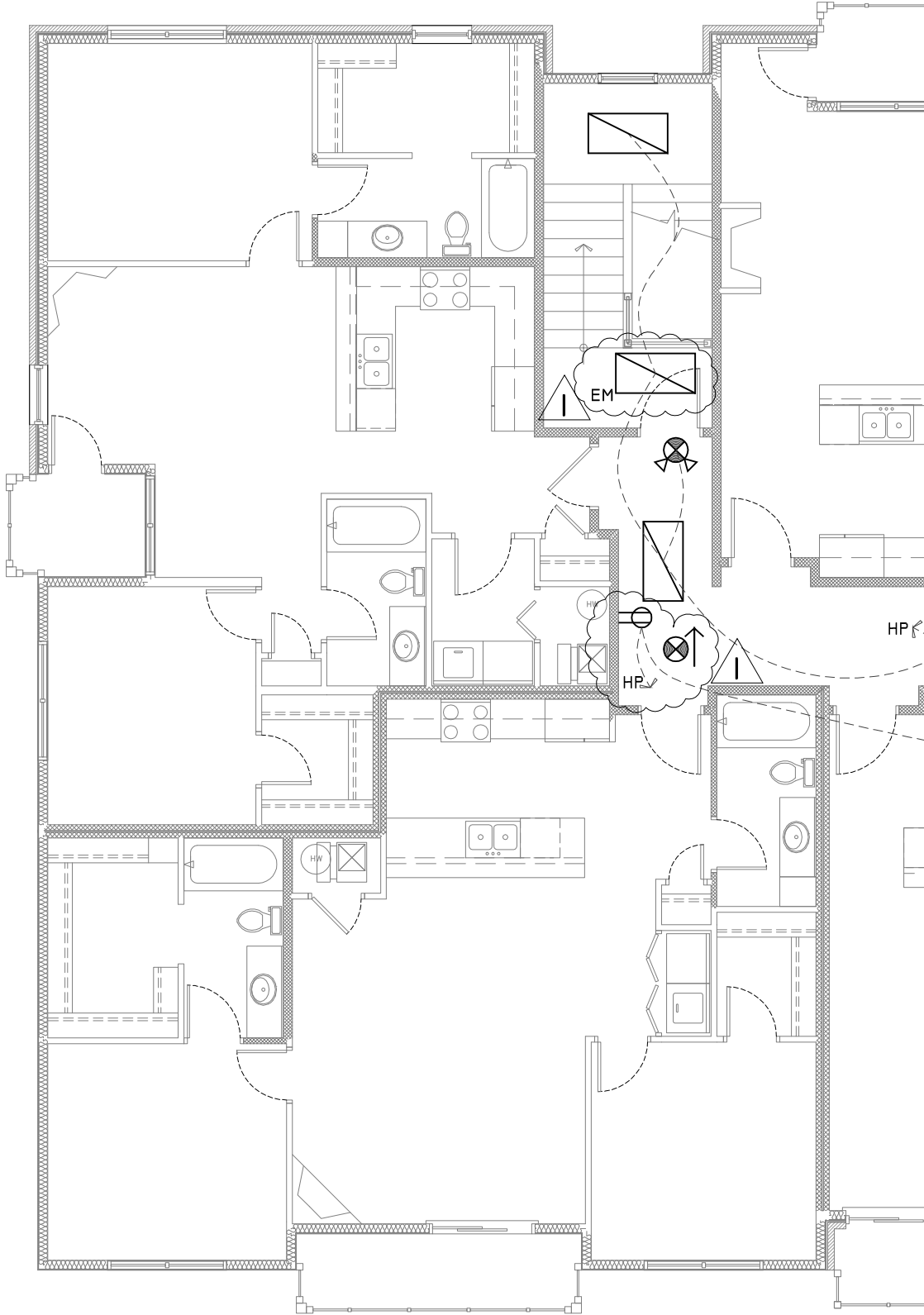
© COPYRIGHT - REUSE OR REPRODUCTION OF THIS DOCUMENT IS NOT PERMITTED WITHOUT WRITTEN PERMISSION

E2.02-1



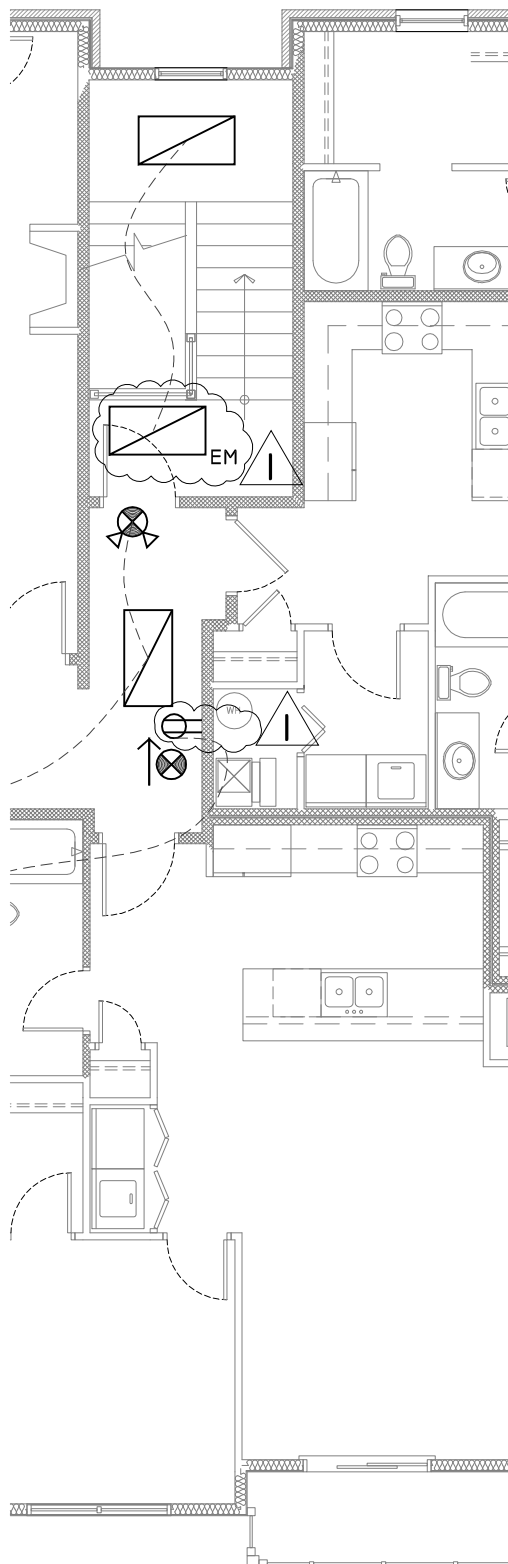
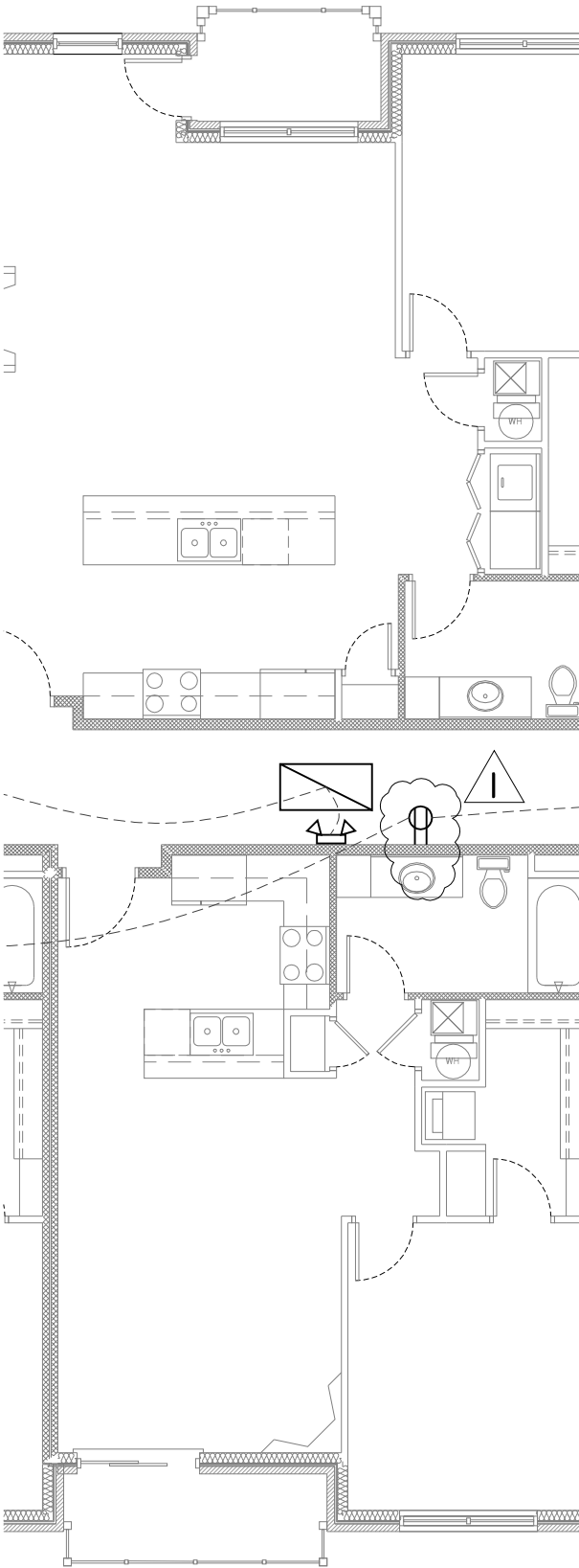
Date Issued: 17 JAN 2012	Project Title: Village on the Preserve - Phase 2	
Date Revised: ADDENDA 01 31 JAN 2012	Omaha, Nebraska	
	Page Description: OVERALL ELEC PLAN - 2ND FLOOR PARTIAL VIEW	
© COPYRIGHT - REUSE OR REPRODUCTION OF THIS DOCUMENT IS NOT PERMITTED WITHOUT WRITTEN PERMISSION		

E2.02-2



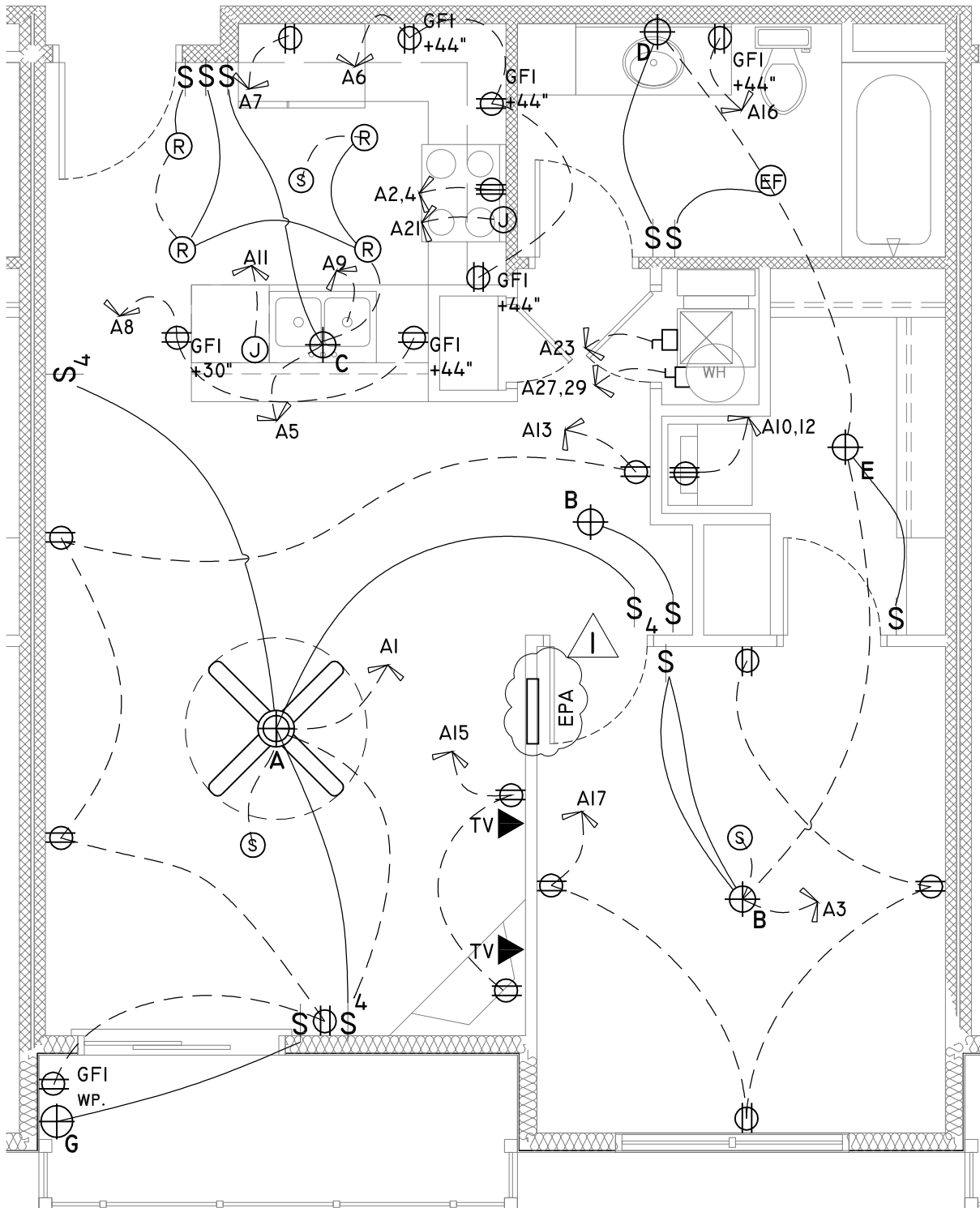
Project Title: Village on the Preserve - Phase 2 Omaha, Nebraska	
Date Issued: 17 JAN 2012 Date Revised: ADDENDA 01 31 JAN 2012	Page Description: OVERALL ELEC PLAN - 3RD FLOOR PARTIAL VIEW
© COPYRIGHT - REUSE OR REPRODUCTION OF THIS DOCUMENT IS NOT PERMITTED WITHOUT WRITTEN PERMISSION	

E2.03-1



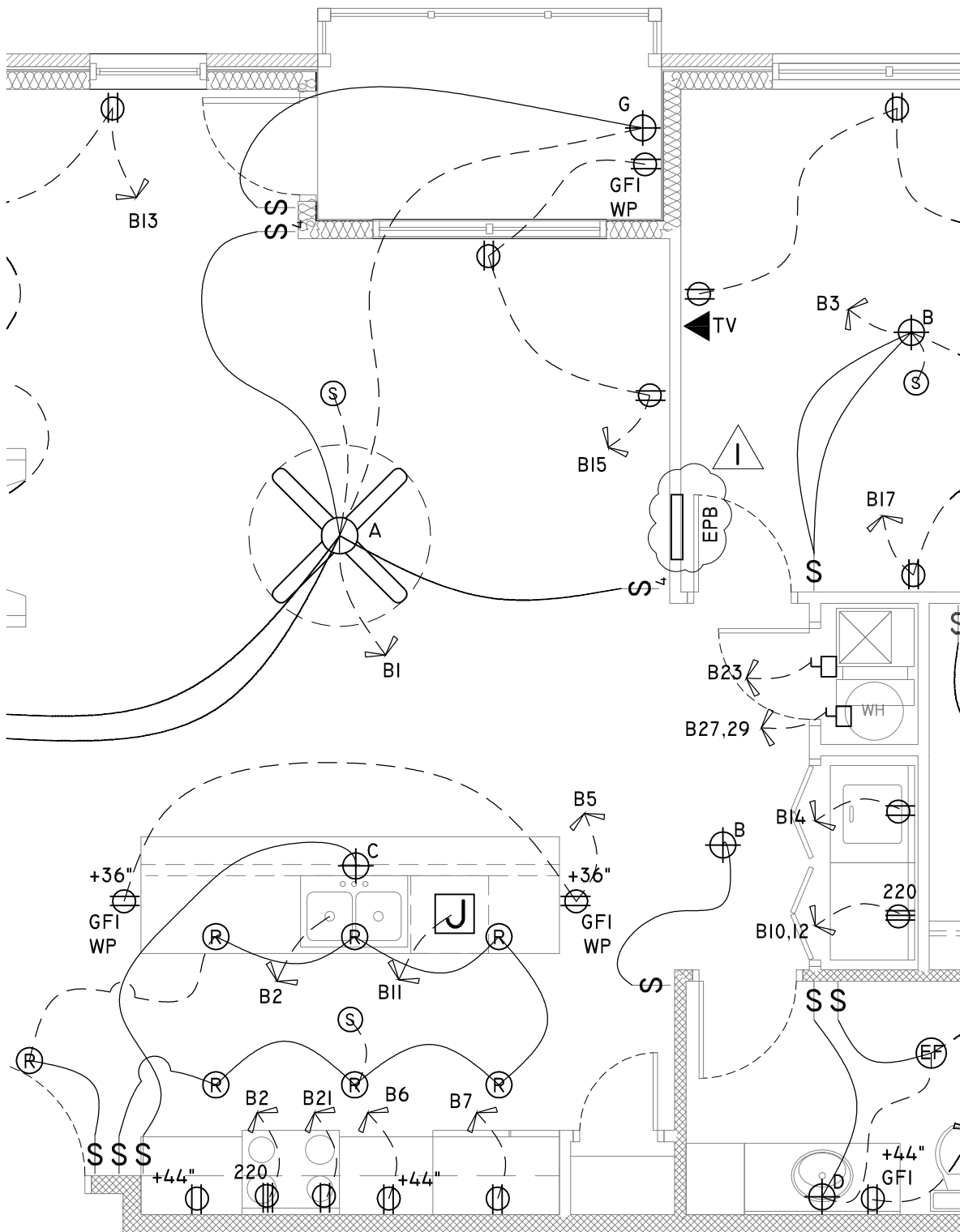
Project Title: Village on the Preserve - Phase 2 Omaha, Nebraska	
Date Issued: 17 JAN 2012	Page Description:
Date Revised: ADDENDA 01 31 JAN 2012	
© COPYRIGHT - REUSE OR REPRODUCTION OF THIS DOCUMENT IS NOT PERMITTED WITHOUT WRITTEN PERMISSION	

E2.03-2



Project Title: Village on the Preserve - Phase 2	
Omaha, Nebraska	
Page Description: UNIT A ELECTRICAL PLAN	
Date Issued: 17 JAN 2012	Date Revised: ADDENDA 01 31 JAN 2012
© COPYRIGHT - REUSE OR REPRODUCTION OF THIS DOCUMENT IS NOT PERMITTED WITHOUT WRITTEN PERMISSION	

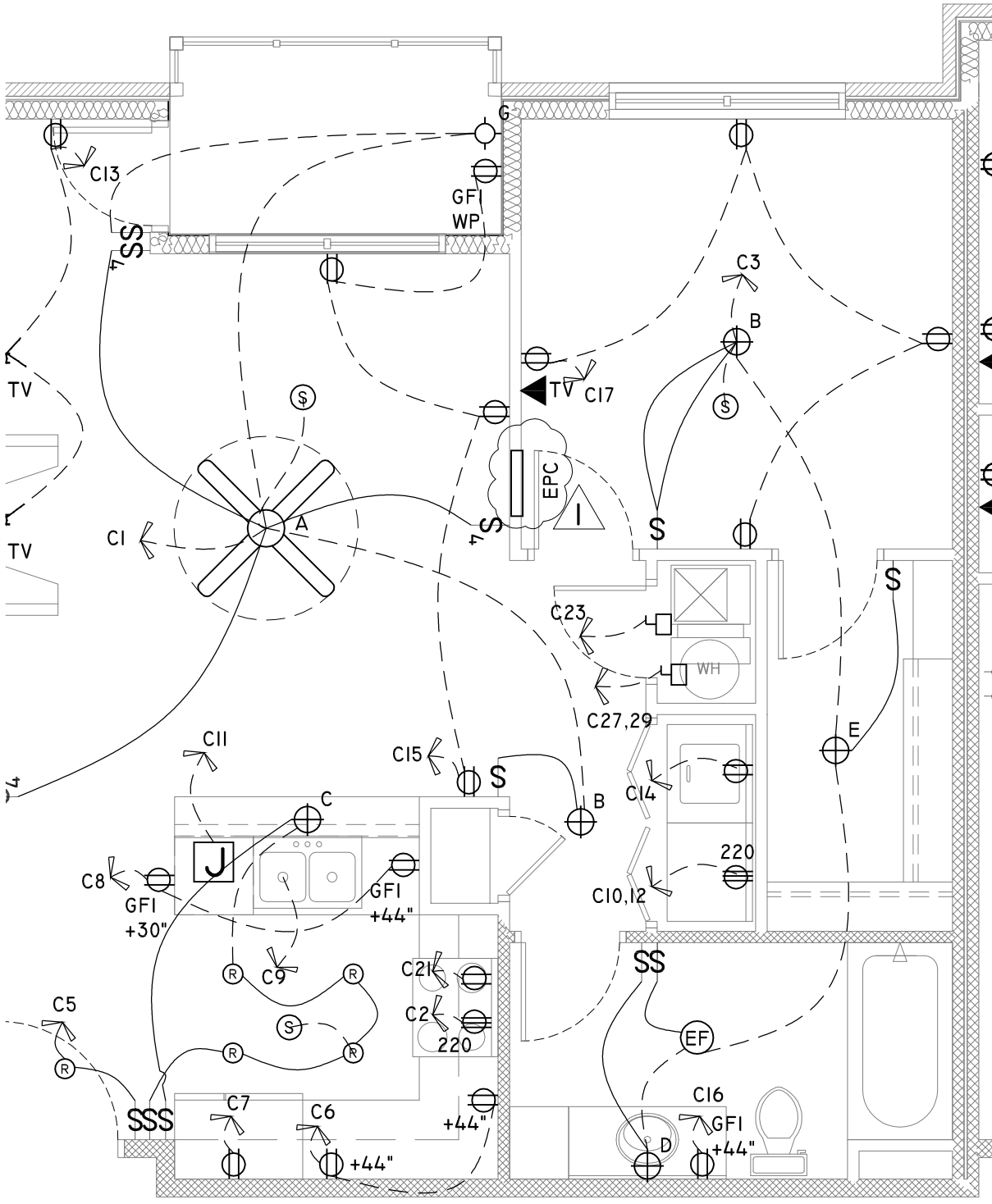
E2.04-1



Project Title: Village on the Preserve - Phase 2 Omaha, Nebraska	
Date Issued: 17 JAN 2012 Date Revised: ADDENDA 01 31 JAN 2012	Page Description: UNIT B ELECTRICAL PLAN

E2.04-2

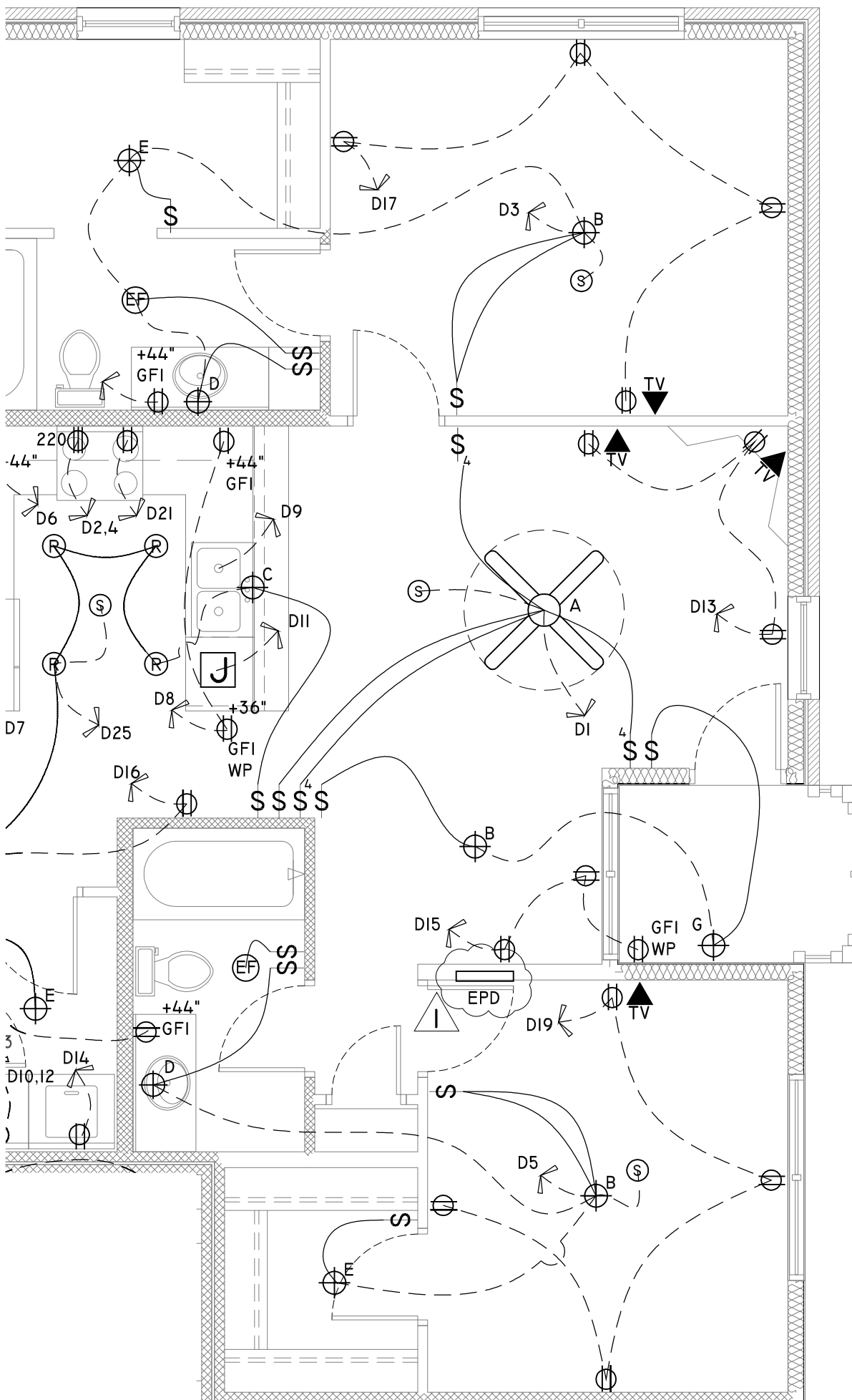
© COPYRIGHT - REUSE OR REPRODUCTION OF THIS DOCUMENT IS NOT PERMITTED WITHOUT WRITTEN PERMISSION



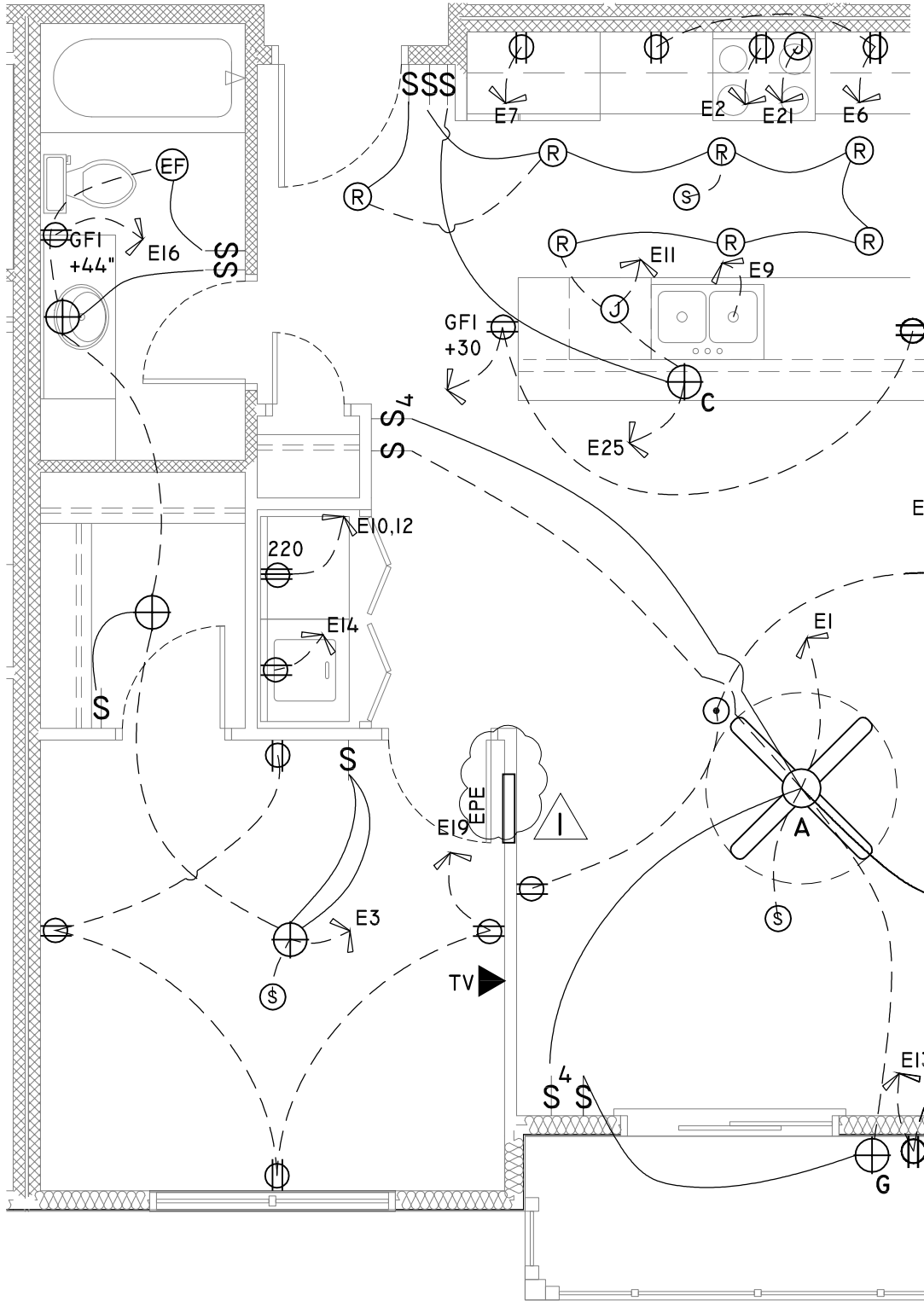
Project Title: Village on the Preserve - Phase 2		Page Description: UNIT C ELECTRICAL PLAN	
Date Issued: 17 JAN 2012	Date Revised: ADDENDA 01 31 JAN 2012	Omaha, Nebraska	
Date Issued:		Date Revised:	
Date Issued:		Date Revised:	
Date Issued:		Date Revised:	

E2.04-3

© COPYRIGHT - REUSE OR REPRODUCTION OF THIS DOCUMENT IS NOT PERMITTED WITHOUT WRITTEN PERMISSION



Project Title: Village on the Preserve - Phase 2 Omaha, Nebraska		Page Description: UNIT D ELECTRICAL PLAN	
Date Issued: 17 JAN 2012	Date Revised: ADDENDA 01 31 JAN 2012		
E2.04-4			
<small>© COPYRIGHT - REUSE OR REPRODUCTION OF THIS DOCUMENT IS NOT PERMITTED WITHOUT WRITTEN PERMISSION</small>			



Project Title:
Village on the Preserve - Phase 2

Omaha, Nebraska

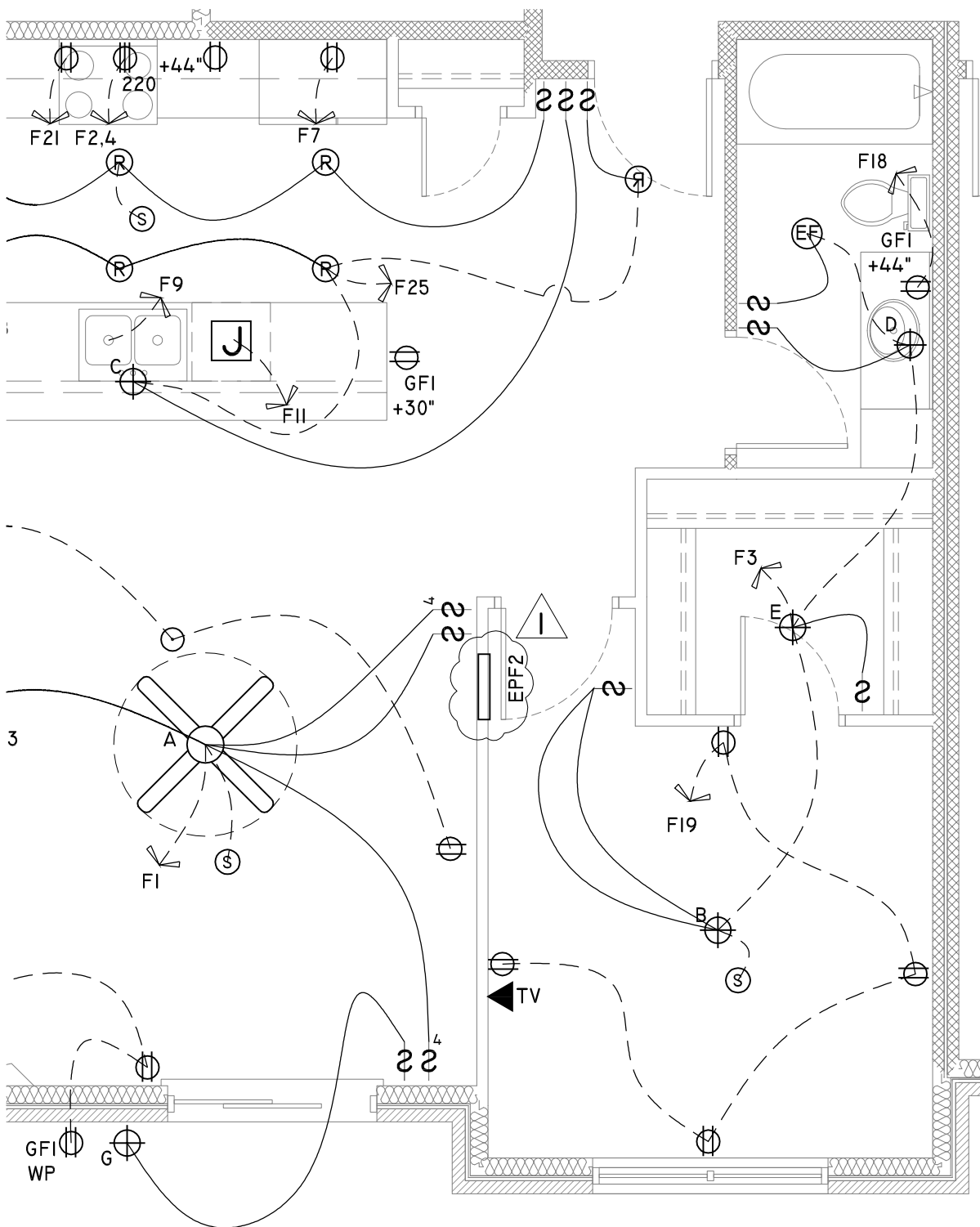
Date Issued: 17 JAN 2012

Date Revised: ADDENDA 01
 31 JAN 2012

Page Description:
 UNIT E ELECTRICAL PLAN

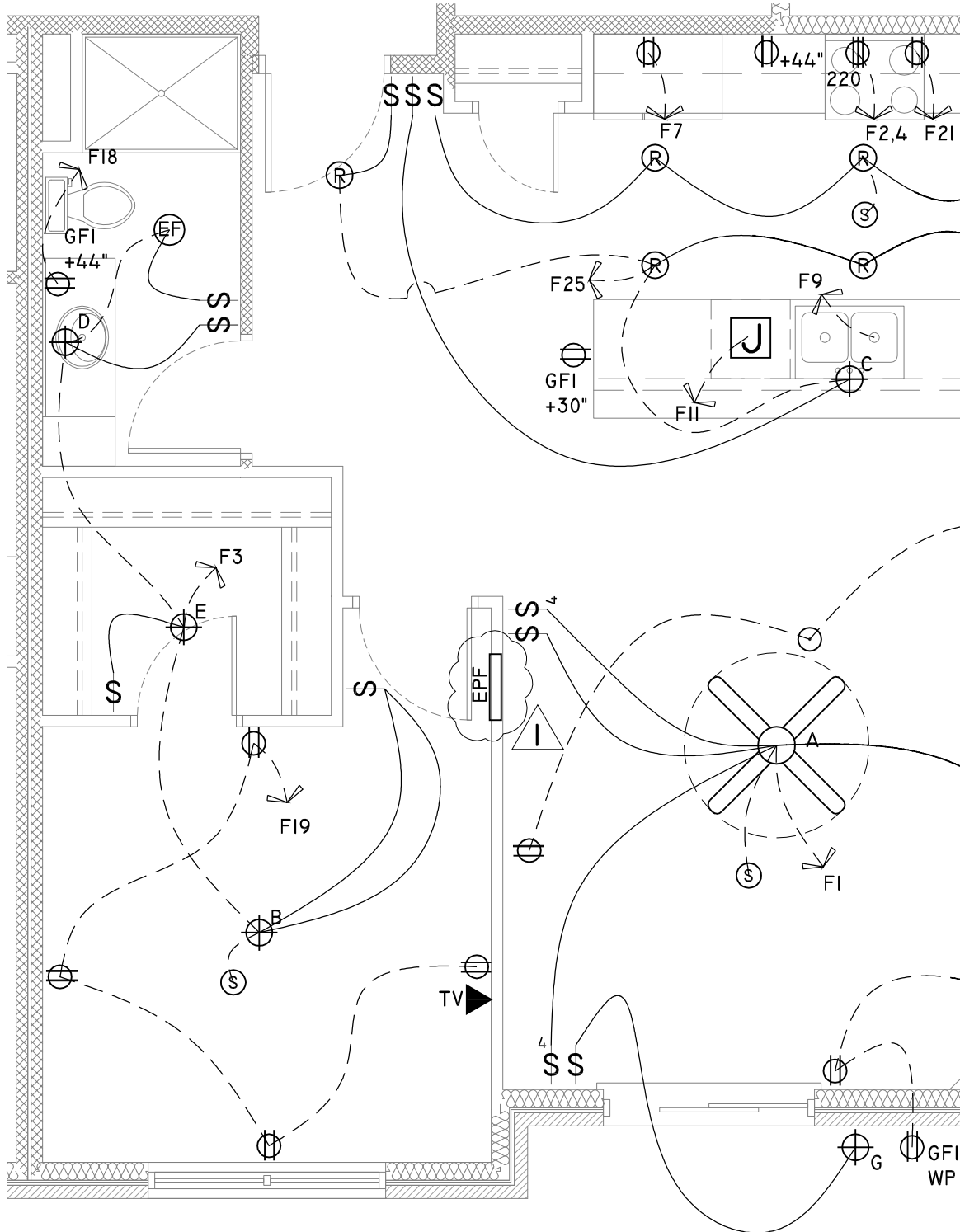
E2.04-5

© COPYRIGHT - REUSE OR REPRODUCTION OF THIS DOCUMENT IS NOT PERMITTED WITHOUT WRITTEN PERMISSION



Project Title: Village on the Preserve - Phase 2	
Date Issued: 17 JAN 2012	Date Revised: ADDENDA 01 31 JAN 2012
Page Description: UNIT F2 ELECTRICAL PLAN	
© COPYRIGHT - REUSE OR REPRODUCTION OF THIS DOCUMENT IS NOT PERMITTED WITHOUT WRITTEN PERMISSION	

E2.04-6



Project Title:
Village on the Preserve - Phase 2

Omaha, Nebraska

Page Description:
 UNIT F ELECTRICAL PLAN

Date Issued: 17 JAN 2012

Date Revised: ADDENDA 01
 31 JAN 2012

© COPYRIGHT - REUSE OR REPRODUCTION OF THIS DOCUMENT IS NOT PERMITTED WITHOUT WRITTEN PERMISSION

E2.04-7

