



## BIDDERS BULLETIN

**PROJECT:** Hitchcock Co. Schools – 2012 Addition and Remodel  
Culbertson and Trenton, Nebraska

### BULLETIN NUMBER

BB-2

### ISSUED BY:

Grant Creager & Charles Lindbloom

**PROJECT #:** 09-0762

**DATE ISSUED:** January 26, 2012

*This bulletin is issued by the Architect to all known bidders before receipt of proposals, for the purpose of explaining, interpreting, or modifying the original plans and specifications. When enumerated by the bidder upon the proposal sheet, the information or instructions given hereon will be equally binding upon all parties as if included in the original plans and specifications.*

**BIDDER MUST ENTER THE NUMBER OF THIS BULLETIN ON HIS PROPOSAL SHEET**

**MECHANICAL AND ELECTRICAL BID BULLETIN ITEMS WILL FOLLOW THE ARCHITECTURAL AND ARE FORMATED SEPERATLY.**

### THE FOLLOWING ITEMS ARE APPLICABLE TO THE ARCHITECTURAL SPECIFICATIONS

All products being supplied for these projects are to be pre-approved in the specifications or by bid bulletins. No other product or suppliers are permitted.

**BB-2, ITEM #1: General,** The completion date for Trenton and Culbertson is to be Mid July 2013. Both schools are to be turned over to Hitchcock County School District Prior to August 1, 2013. All inspections for these project are to be finalize and the building to be occupiable before August 1, 2013.

There will be no Bidders Bulletin following this for the projects. Bidders are required to bid the document as they are with the additional information form BB1 & BB2. For all other discrepancies the bidder is required to bid the more expensive option as stated in the specifications.

### **BB-2, ITEM #2: Substitutions**

The following products and manufacturers will be considered approved equal for the products in which they are listed below. However, this does not relieve the supplier from providing equipment as specified, and if equipment is submitted which does not meet the intent of the specifications, it will in fact be rejected.

#### Architectural

Flexible Sheet Roofing System

Metal Roofing

Hardware

Visual Display Boards

Walk-In Coolers

Toilet Partitions

Concrete Sealer

Perimeter & Under Slab Insulation

Building Insulation

GAF EverGuard & Genflex

Architectural Building Components – Smooth Panel

Record USA 8100 Auto Operators

Newline

Kolpak

Hadrian

SpecChem Cure & Seal WB

Diversifoam CertiFoam 25

Diversifoam CertiFoam 40

**BB-2, ITEM #3: Library Shelving at Culbertson** – provide the following:

SPACESAVER CANTILEVER LIBRARY BOOKSTACK; Design: Welded-Steel-Frame, Cantilever bracket type metal library shelving as manufactured by Spacesaver Corporation of Fort Atkinson, Wisconsin.

Part Number: Description:

Provide 15 CBS36090960S3 60" high 13" deep single-faced stationary welded- uni-strut frame with (1) 3" slotted base shelf and (4) adjustable shelves per face section. Each shelf will have one backstop and two adjustable dividers per shelf.

Shelving to be finished with WilsonArt HPL laminate end panels and Laminate Tops with 3mm PVC edge- banding where appropriate. This unit is called out as note 21 & 22 on drawing sheet A901.

Provide 15 CWW36131342S3 42" high 24" deep double-faced mobile welded uni- strut framed carts with (3) shelves. The bottom shelf to have one backstop and a snap-in wire book support. The top two shelves to have one backstop each and two adjustable dividers per shelf. Back-to-back shelves shall have their own backstop. Each cart to be finished with WilsonArt HPL Laminate end panels and Laminate tops with 3mm PVC edge-banding. This unit is called out as note 23 & 24 on drawing sheet A901.

Construction of laminate panels to be 11/16" particle board laminated both faces with standard finish to be Wilsonart HPL.

Adjustable shelf assemblies shall be easily and readily adjustable by one person without tools or disassembly of the end brackets from the shelf base, and without affecting other shelves or the stability of the section or the range.

All components to be painted with an electrostatically applied Powder Coat paint that meets or exceeds specifications set forth by the American Library Association.

Shelving to feature a Lifetime Warranty.

**BB-2, ITEM #4: Section NTB, Notice to Bidders** – The fourth paragraph from the top incorrectly reads "The projects listed above can be bid as separate projects or they can be combined." Both projects are to be bid by the general contractors as a combined project per the "Bid Form". It is acceptable for sub-contractors to bid on one or both to the general contractor and have separate sub for each trade for the two projects.

**BB-2, ITEM #5: Section IB, Instructions to Bidders** – General Contractor will be required on all pay applications (excluding the first pay application) to provide a lien waiver from their subcontractors stating they have been paid for all satisfactory work completed to date and has been signed as completed by the Architect on the previous pay application before the General Contractors is paid their next payment. This will be a stipulation in the AIA A101, Standard Form of Agreement between Owner and Contractor for the successful General Contractor being awarded the project.

**IB-2, Article 7, Rejection of Bids, 7.1** ADD to the end of the existing paragraph:

The selection of the successful Contractor will be based on each of the following:

1. Lowest qualified Bid
2. The qualifications of the contractor based on past projects, experience, working relationships, and demonstrated ability to perform the kind of work required and to provide the best service and final product of the School District.

The Hitchcock County School district Board reserves the right to reject any or all bids based on any or all of the criteria listed above. By submitting a bid, all bidders are acknowledging and accepting this right of the Owner.

**BB-2, ITEM #6: Section 01020-2, Allowances** – CHANGE - Allowance for the hardware of the 3 card readers and corresponding electrical is to be \$8,000 in lieu of \$5,000.

**BB-2, ITEM #7: Section 08410, Aluminum Doors & Frames** – Frame color selection to be either anodized bronze or 2605 paint finish from manufactures standard colors.

All aluminum doors to use hardware specified in Section 08700, Finish Hardware. If any component/hardware is not covered, use what is listed on the drawings or the aluminum manufactures standard components.

**BB-2, ITEM #8: Section 04200, Unit Masonry Work**, Concrete Masonry Units (CMU) – Quality Assurance.

Concrete masonry units for this project will be provided by an active producer member of the Nebraska Concrete Masonry Association (NCMA) that participates in the NCMA testing program and conforms to all standards for concrete masonry units set forth by the National Concrete Masonry Association.

The criteria set by Nebraska CMA is as follows; tests will be performed quarterly on a minimum of 10 concrete masonry units and will consist of compressive tests, water absorption tests, measurements for thickness, height, length, minimum face shell and web thickness.

**BB-2, ITEM #9: Section 08700, Finish Hardware**, All doors Wood, Hollow Metal and Aluminum to us the hardware specified in this section.

Replace this section in it's entirely with the attached.

**BB-2, ITEM #10: Section 09110-3, Steel Stud System**, Part 2 -Products, General - G90 coating is not required. Use G60.

**THE FOLLOWING ITEMS ARE APPLICABLE TO THE CULBERTSON DRAWINGS**

**BB-2, ITEM #11: Drawing Sheet C100** – See supplemental sheet C100-1 and C100-2

1) For clarification purposes of General Notes and Demolition Notes.

**BB-2, ITEM #12: Drawing Sheet C101**

1) Revise Site Plan Note "13" to read: "New 6'-0" tall chain link fence with all required components for complete secure fence assembly. Posts to be located at 9'-0" o.c. with 3'-0" deep, 8" diameter concrete base at each post."

2) Revise Site Plan Note "16" to read: "New 6'-0" tall chain link fence with all required components for complete secure fence assembly. Posts to be located at 9'-0" o.c. with 3'-0" deep, 8" diameter concrete base at each post. Provide vision slats."

3) Revise Site Plan Note "27" to read: "New concrete flume with 4'-0" high head wall and 6'-0" wide X 8'-0" long X 4" thick flume. The final layout will be finalized with the General Contractor upon further site investigation of existing conditions."

4) Revise Site Plan Note "30" to read: "New light. See electrical plans."

**BB-2, ITEM #13: Drawing Sheet A101c**

FRAME ELEVATIONS:

1) Frame Elevation "HM-3" not used.

**BB-2, ITEM #14: Drawing Sheet A103a**

ROOM FINISH SCHEDULE:

1) Revise room 138 Workroom/ Lounge floor finish material to be VCT.

**BB-2, ITEM #15: Drawing Sheet A901 also Spec Section 11400-4, Food Service Equipment**

Equipment List, Item #36 - Dishwashing table is to be an Advance Model DTC-k60-144L in lieu of DTC-G60-144L.

The General Contractor is responsible for relocating all of the existing kitchen equipment at Culbertson to the new Kitchen 143. Coordinate with the Owner.

**THE FOLLOWING ITEMS ARE APPLICABLE TO THE TRENTON DRAWINGS**

**BB-2, ITEM #16: Drawing Sheet C100 – See supplemental sheet C100-1 and C100-2**

- 1) See supplemental sheets for clarification purposes of General Notes and Demolition Notes.
- 2) Extend demolition of existing concrete side walk on east side of the south building and additional 3'-0" to the south for installation of new concrete trench drain.

**BB-2, ITEM #17: Drawing Sheets C101B**

- 1) Revise Site Plan note "23" to read: "New 6'-0" X 6'-0" X 6" deep concrete pad for existing bell relocation. Embed metal bolts in concrete pad to mount bell."

**BB-2, ITEM #18: Drawing Sheets C101A and C101B – See supplemental sheet C101A-3**

- 1) Revise Site Plan Note "11" by adding the following sentences: "Coordinate all sizes of sleeves and anchors and locations with equipment suppliers. Provide 12" high minimum concrete pier for support under the propane tank steel saddles to meet code."
- 2) Revise Site Plan Note "24" to read: "New light. See electrical plans."
- 3) Revise Site Plan Note "B" to read: "Extend roof drain pipe below concrete floor underground to the south through wall foundation and walk-in cooler foundation, under sidewalk, elbow pipe to east and daylight at new concrete flume. Slope at ¼" per foot."
- 4) Add Site Plan Note "D" to read: "new concrete flume 3'-0" X 8'-0" long. Provide 6"x6" back and side curbs. Slope to trench drain."
- 5) Add Site Plan Note "E" to read: "New concrete trench drain 3'-0" wide X 15'-7" long. Provide 2'-0" wide 3/8" galvanized steel plate (safety plate) raised non-slip diamond pattern surface cover. Slope to street. See detail C9/C101B similar."
- 6) Add Site Plan Note "E" to read: "Through wall overflow drain lambs tongue. See detail D11/C101B-2 similar."
- 7) Disregard supplemental sheet drawing C101A-1.
- 8) Revise Site Plan Note "8" to read: "New 6'-0" tall chain link fence with all required components for complete secure fence assembly. Posts to be located at 9'-0" o.c. with 3'-0" deep, 8" diameter concrete base at each post (concrete base not required where fence posts are mounted in top of retaining wall). Provide vision slats."

**BB-2, ITEM #19: Drawing Sheets C102– See supplemental sheet C102-1**

Revise grading plan per supplemental sheet.

**BB-2, ITEM #20: Drawing Sheet A100**

1) Revise Demolition Notes "1" to read: "Demo entire existing building. Infill hole as required to prepare area for new construction. Refer to civil sheets. Coordinate with owner prior to demolition for all equipment to be salvaged. Owner to remove all components to be saved prior to demolition. Coordinate with abatement team as required. Salvage as much brick from J.H. as possible for patching."

**BB-2, ITEM #21: Drawing Sheet A103b**

REMARK NOTES:

- 1) Add new Remark Note "8" to read: "Patch wall at mechanical demolition with blank-off plate."

ROOM FINISH SCHEDULE:

- 2) Room B108 Existing Corridor: Add Remark Note #8.
- 3) Add Remark Note #8 at south wall of the existing offices. (south building)

**BB-2, ITEM #22: Drawing Sheet A701b and A701b**

GENERAL NOTES:

- 1) Add General Note "3" to read: "Refer to detail D5/A701a to correspond with the (6) six existing skylights in room B107 Corridor."
- 2) Add General Note "4" to read: "The General Contractor is responsible for removing and replacing ceiling pads and cross members where new mechanical equipment and sprinkler system is being installed in the ceiling. The areas pertaining are all rooms to the east and south of the gymnasium in north building (ie: locker rooms and science room). "

**MECHANICAL AND ELECTRICAL BID BULLETIN ITEMS WILL FOLLOW THE ARCHITECTURAL AND ARE FORMATED SEPERATLY.**

**END OF Architectural Portion of BB-2, See Attached**

**HITCHCOCK COUNTY SCHOOLS  
2012 ADDITIONS & RENOVATIONS  
TRENTON & CULBERTSON, NEBRASKA**

**SECTION 08700 - FINISH HARDWARE**

**PART 1 - GENERAL**

**DESCRIPTION OF WORK**

The extent of finish hardware is shown on the drawings and in schedules. Finish hardware is hereby defined to include all items known commercially as finish hardware, as required for swing doors.

The required types of finish hardware include (but are not necessarily limited to) the following:

- Butts and hinges
- Lock cylinders and keys
- Lock and latch sets
- Closers
- Door control devices
- Stripping and seals
- Thresholds
- Miscellaneous hardware

**QUALITY ASSURANCE**

Acceptable Designs: The last article of this section indicates products which are of acceptable design for primary exposure (locksets, etc.). Do not change the selection of products without the Architect's approval.

Acceptable Manufacturers: The last article of this section indicates acceptable manufacturers of primary items of finish hardware.

Schedule Manufacturer's Numbers: As asterisk (\*) is shown in the listing of acceptable manufacturers to indicate which manufacturer's product numbers have been used in schedules and elsewhere to establish minimum requirements.

Hand of Door: The drawings show the swing or hand of each door leaf (left, right, reverse bevel, etc.). Furnish each item of hardware for proper installation and operation of the door swing as shown.

**SUBMITTALS**

Manufacturer's Data; Finish Hardware: Submit manufacturer's product data for each item of hardware. Include whatever information may be necessary to show compliance with requirements, and include instructions for installation and for maintenance of operating parts and exposed finishes.

Hardware Schedule; Finish Hardware: Submit hardware schedule in the manner and format specified, complying with the actual construction progress schedule requirements (for each draft). Hardware schedules are intended for coordination of the work. Review and acceptance by the Architect or Owner does not relieve the Contractor of his exclusive responsibility to fulfill the requirements as shown and specified.

Include a separate key schedule, showing clearly how the Owner's final instructions on keying of locks have been fulfilled.

## JOB CONDITIONS

Coordination: Coordinate hardware with other work. Tag each item or package separately, with identification related to the final hardware schedule, and include basic installation instructions in the package. Furnish hardware items of proper design for use on doors and frames of the thicknesses, profile, swing, security and similar requirements indicated, as necessary for proper installation and function. Deliver individually packaged hardware items at the proper times to the proper locations (shop or project site) for installation.

Templates: Furnish hardware templates to each fabricator of doors, frames and other work to be factory-prepared for the installation of hardware. Upon request, check the shop drawings of such other work, to confirm that adequate provisions are made for the proper installation of hardware.

## PART 2 - PRODUCTS

### MATERIALS

See article "Finish Hardware Data Sheet and Schedule" appearing at end of this section.

## PART 3 - EXECUTION

### INSTALLATION

Mount hardware units at heights indicated in "Recommended Locations for Builders' Hardware" by the Door and Hardware and Institute (DHI), except as otherwise specifically indicated or required to comply with governing regulations, and except as may be otherwise directed by the Architect.

Install each hardware item in compliance with the manufacturer's instructions and recommendations. Wherever cutting and fitting is required to install hardware onto or into surfaces which are later to be painted or finished in another way. Coordinate removal, storage and reinstallation or application of surface protections with finishing work specified in the 9T-Series sections. Do not install surface-mounted items until finishes have been completed on the substrate.

Set units level, plumb and true to line and location. Adjust and reinforce the attachment substrate as necessary for proper installation and operation.

Cut and fit threshold and floor covers to profile of door frames, with mitered corners and hairline joints join units with concealed welds or concealed mechanical joints. Cut smooth openings for spindles, bolts and similar items, if any.

Screw thresholds to substrate with No. 10 or larger screws, of the proper type for permanent anchorage and of bronze or stainless steel which will not corrode in contact with the threshold metal.

On heavy-duty cast metal thresholds, provide not less than 3/8" diameter screw anchors.

At exterior doors, and elsewhere as indicated, set each edge of threshold in a seal strip of butyl rubber sealant or polyisobutylene mastic sealant.

**HITCHCOCK COUNTY SCHOOLS  
2012 ADDITIONS & RENOVATIONS  
TRENTON & CULBERTSON, NEBRASKA**

Manufacturers: See Schedule

Approved Manufacturers:

| <u>Item:</u>   | <u>Specified:</u>     | <u>Approved:</u>         |
|--|-----------------------|--------------------------|
| Hinges   | McKinney              | Hager,                   |
| Locks (must verify keyway<br>By Sargent to match exist.) | Sargent               | NONE                     |
| Closers  | Sargent 281 Series    | LCN 4010 OR 4111 Series  |
| Auto Openers   | Sargent               | Norton                   |
| Exit Devices   | Sargent 80 Series 32D | Von Duprin 98 Series 32D |
| Magnetic Hold Opens                                      | Sargent               | Rixson                   |
| Kickplates & Wall Stops                                  | Rockwood              | Burns                    |
| Overhead Stops   | Sargent               | Rixson                   |
| Smoke Seal, Intumescent Seal                             | Pemko                 | National Guard,          |
| Push/Pulls   | Rockwood              | Burns                    |
| Threshold, Sweeps and W/S                                |                       |                          |

**CULBERTSON HARDWARE SETS**

**Hardware Set 1**

Doors: 100AA, 108A, 118A, 126A, 130B

Each to Receive:

|   |    |                 |                       |       |           |
|---|----|-----------------|-----------------------|-------|-----------|
| 2 | EA | CONT HINGE      | 84" MCK-12HD Kawneer  | CLEAR | MC KINNEY |
| 1 | EA | MULLION (STD 96 | 60-L980A 96           | 28    | SARGENT   |
| 1 | EA | RIM EXIT        | 60-8504 F X 862 x 649 | 32D   | SARGENT   |
| 1 | EA | RIM EXIT        | 8510 F X 862 x 649    | 32D   | SARGENT   |
| 2 | EA | PER. CORE       | 6300 CORE             | US15  | SARGENT   |
| 2 | EA | CLOSER          | 281-PSH               | EN    | SARGENT   |
| 2 | EA | DROP PLATE      | 281-D                 | EN    | SARGENT   |
| 2 | EA | CLOSER SPACER   | 581-2                 | EN    | SARGENT   |
| 1 | EA | THRESHOLD       | 171A-72"              |       | PEMKO     |
| 2 | EA | BRUSH SWEEP     | 3452CNB36             | C     | PEMKO     |

**Hardware Set 2**

Doors: 100A

Each to Receive:

|   |    |                 |                       |       |           |
|---|----|-----------------|-----------------------|-------|-----------|
| 2 | EA | CONT HINGE      | 84" MCK-12HD Kawneer  | CLEAR | MC KINNEY |
| 1 | EA | MULLION (STD 96 | 60-L980A 96           | 28    | SARGENT   |
| 1 | EA | RIM EXIT        | 60-8504 F X 862 x 649 | 32D   | SARGENT   |
| 1 | EA | RIM EXIT        | 8510 F X 862 x 649    | 32D   | SARGENT   |
| 2 | EA | PER. CORE       | 6300 CORE             | US15  | SARGENT   |
| 1 | EA | PUSH BUTTON     | 4396 HP               |       | SARGENT   |
| 1 | EA | PUSH BUTTON     | 4397 HP               |       | SARGENT   |
| 1 | EA | CLOSER          | 281-PSH               | EN    | SARGENT   |
| 1 | EA | DROP PLATE      | 281-D                 | EN    | SARGENT   |
| 1 | EA | CLOSER SPACER   | 581-2                 | EN    | SARGENT   |
| 1 | EA | AUTO OPENER     | CL4051 LH             | EN    | SARGENT   |
| 1 | EA | THRESHOLD       | 171A-72"              |       | PEMKO     |

**HITCHCOCK COUNTY SCHOOLS  
2012 ADDITIONS & RENOVATIONS  
TRENTON & CULBERTSON, NEBRASKA**

|   |    |             |           |   |       |
|---|----|-------------|-----------|---|-------|
| 2 | EA | BRUSH SWEEP | 3452CNB36 | C | PEMKO |
|---|----|-------------|-----------|---|-------|

**Hardware Set 3**

Doors: 112A, 112B

Each to Receive:

|   |    |               |                       |       |           |
|---|----|---------------|-----------------------|-------|-----------|
| 1 | EA | CONT HINGE    | 84" MCK-12HD Kawneer  | CLEAR | MC KINNEY |
| 1 | EA | RIM EXIT      | 60-8504 F X 862 x 649 | 32D   | SARGENT   |
| 1 | EA | PER. CORE     | 6300 CORE             | US15  | SARGENT   |
| 1 | EA | CLOSER        | 281-PSH               | EN    | SARGENT   |
| 1 | EA | DROP PLATE    | 281-D                 | EN    | SARGENT   |
| 1 | EA | CLOSER SPACER | 581-2                 | EN    | SARGENT   |
| 1 | EA | THRESHOLD     | 171A-36"              |       | PEMKO     |
| 1 | EA | BRUSH SWEEP   | 3452CNB36             | C     | PEMKO     |

**Hardware Set 4**

Doors: 100B

Each to Receive:

|   |    |                 |                                  |       |            |
|---|----|-----------------|----------------------------------|-------|------------|
| 2 | EA | CONT HINGE      | 83" MCK-12HD Kawneer             | CLEAR | MC KINNEY  |
| 1 | EA | MULLION (STD 96 | 60-EL980 A 96                    | US28  | SARGENT    |
| 1 | EA | RIM EXIT        | 60-8504 F X 862 x 649            | 32D   | SARGENT    |
| 1 | EA | RIM EXIT        | 8510 F X 862 x 649               | 32D   | SARGENT    |
| 2 | EA | PER. CORE       | 6300 CORE                        | US15  | SARGENT    |
| 2 | EA | ELEC STRIKE     | 9600                             | 630   | HES        |
| 1 | EA | PUSH BUTTON     | 4396 HP                          |       | SARGENT    |
| 1 | EA | PUSH BUTTON     | 4397 HP                          |       | SARGENT    |
| 1 | EA | CLOSER          | 281-PSH                          | EN    | SARGENT    |
| 1 | EA | DROP PLATE      | 281-D                            | EN    | SARGENT    |
| 1 | EA | CLOSER SPACER   | 581-2                            | EN    | SARGENT    |
| 1 | EA | AUTO OPENER     | CL4051 LH                        | EN    | SARGENT    |
| 2 | EA | Timer           | DT-7: Prime Time 7 Day Dig.Timer |       | SECURITRON |

**Hardware Set 4.5**

Doors: 100BB

Each to Receive:

|   |    |                 |                                  |       |            |
|---|----|-----------------|----------------------------------|-------|------------|
| 2 | EA | CONT HINGE      | 83" MCK-12HD Kawneer             | CLEAR | MC KINNEY  |
| 1 | EA | MULLION (STD 96 | 60-EL980 A 96                    | US28  | SARGENT    |
| 1 | EA | RIM EXIT        | 60-8504 F X 862 x 649            | 32D   | SARGENT    |
| 1 | EA | RIM EXIT        | 8510 F X 862 x 649               | 32D   | SARGENT    |
| 2 | EA | PER. CORE       | 6300 CORE                        | US15  | SARGENT    |
| 2 | EA | ELEC STRIKE     | 9600                             | 630   | HES        |
| 2 | EA | CLOSER          | 281-PSH                          | EN    | SARGENT    |
| 2 | EA | DROP PLATE      | 281-D                            | EN    | SARGENT    |
| 2 | EA | CLOSER SPACER   | 581-2                            | EN    | SARGENT    |
| 2 | EA | Timer           | DT-7: Prime Time 7 Day Dig.Timer |       | SECURITRON |

**Hardware Set 5**

Doors: 101B, 102, 103A, 116

**HITCHCOCK COUNTY SCHOOLS  
2012 ADDITIONS & RENOVATIONS  
TRENTON & CULBERTSON, NEBRASKA**

Each to Receive:

|   |    |             |                  |       |           |
|---|----|-------------|------------------|-------|-----------|
| 3 | EA | HINGE       | TA2714 4.5 X 4.5 | 26D   | MC KINNEY |
| 1 | EA | OFFICE LOCK | 60-8255 LNJ      | 26D   | SARGENT   |
| 1 | EA | PER. CORE   | 6300 CORE        | US15  | SARGENT   |
| 1 | EA | WALL STOP   | 409              | US32D | ROCKWOOD  |

**Hardware Set 6**

Doors: 102A

Each to Receive:

|   |    |                |                  |      |           |
|---|----|----------------|------------------|------|-----------|
| 3 | EA | HINGE          | TA2714 4.5 X 4.5 | 26D  | MC KINNEY |
| 1 | EA | STOREROOM LOCK | 60-8204 LNJ      | 26D  | SARGENT   |
| 1 | EA | PER. CORE      | 6300 CORE        | US15 | SARGENT   |
| 1 | EA | CLOSER         | 281-O            | EN   | SARGENT   |
| 1 | EA | KICK PLATE     | 10 X 34          | 32D  | ROCKWOOD  |
| 1 | EA | SILICON SEAL   | S88D17           |      | PEMCO     |

**Hardware Set 7**

Doors: 101AA, 101AB, 101AC

Each to Receive:

|   |    |             |                  |       |           |
|---|----|-------------|------------------|-------|-----------|
| 3 | EA | HINGE       | TA2714 4.5 X 4.5 | 26D   | MC KINNEY |
| 1 | EA | OFFICE LOCK | 60-8255 LNJ      | 26D   | SARGENT   |
| 1 | EA | PER. CORE   | 6300 CORE        | US15  | SARGENT   |
| 1 | EA | CLOSER      | 281-O            | EN    | SARGENT   |
| 1 | EA | KICK PLATE  | 10 X 34          | 32D   | ROCKWOOD  |
| 1 | EA | WALL STOP   | 409              | US32D | ROCKWOOD  |

**Hardware Set 7.5**

Doors: 138

Each to Receive:

|   |    |             |                  |      |           |
|---|----|-------------|------------------|------|-----------|
| 3 | EA | HINGE       | TA2714 4.5 X 4.5 | 26D  | MC KINNEY |
| 1 | EA | OFFICE LOCK | 60-8255 LNJ      | 26D  | SARGENT   |
| 1 | EA | PER. CORE   | 6300 CORE        | US15 | SARGENT   |
| 1 | EA | CLOSER      | 281-PSH          | EN   | SARGENT   |
| 1 | EA | KICK PLATE  | 10 X 34          | 32D  | ROCKWOOD  |

**Hardware Set 8**

Doors: 143B

Each to Receive:

|   |    |             |                   |      |           |
|---|----|-------------|-------------------|------|-----------|
| 3 | EA | HINGE       | T4A3786 5.0 X 4.5 | 26D  | MC KINNEY |
| 1 | EA | OFFICE LOCK | 60-8255 LNJ       | 26D  | SARGENT   |
| 1 | EA | PER. CORE   | 6300 CORE         | US15 | SARGENT   |
| 1 | EA | CLOSER      | 281-PSH           | EN   | SARGENT   |
| 1 | EA | KICK PLATE  | 10 X 40           | 32D  | ROCKWOOD  |

**Hardware Set 9**

Doors: 108B, 118B, 126B

Each to Receive:

|   |    |            |                      |       |           |
|---|----|------------|----------------------|-------|-----------|
| 2 | EA | CONT HINGE | 84" MCK-12HD Kawneer | CLEAR | MC KINNEY |
|---|----|------------|----------------------|-------|-----------|

**HITCHCOCK COUNTY SCHOOLS  
2012 ADDITIONS & RENOVATIONS  
TRENTON & CULBERTSON, NEBRASKA**

|   |    |               |         |     |         |
|---|----|---------------|---------|-----|---------|
| 2 | EA | DUMMY RAIL    | 8893    | 32D | SARGENT |
| 2 | EA | D STYLE PULL  | 862     | 32D | SARGENT |
| 2 | EA | CLOSER        | 281-PSH | EN  | SARGENT |
| 2 | EA | DROP PLATE    | 281-D   | EN  | SARGENT |
| 2 | EA | CLOSER SPACER | 581-2   | EN  | SARGENT |

**Hardware Set 10**

Doors: 101AD, 102B, 121B, 125B

Each to Receive:

|   |    |             |                         |      |           |
|---|----|-------------|-------------------------|------|-----------|
| 3 | EA | HINGE       | T4A3386 4.5 X 4.5 (NRP) | 26D  | MC KINNEY |
| 1 | EA | RIM EXIT    | 60-8804 F X FSW         | 32D  | SARGENT   |
| 1 | EA | PER. CORE   | 6300 CORE               | US15 | SARGENT   |
| 1 | EA | CLOSER      | 281-PSH                 | EN   | SARGENT   |
| 1 | EA | KICK PLATE  | 10 X 34                 | 32D  | ROCKWOOD  |
| 1 | EA | THRESHOLD   | 171A-36"                |      | PEMKO     |
| 1 | EA | BRUSH SWEEP | 3452CNB36               | C    | PEMKO     |
| 1 | EA | GASKETING   | 294AV3684               | A    | PEMKO     |
| 1 | EA | DRIP CAP    | 346C-40"                |      | PEMKO     |

**Hardware Set 11**

Doors: 103B, 139

Each to Receive:

|   |    |            |                  |       |           |
|---|----|------------|------------------|-------|-----------|
| 3 | EA | HINGE      | TA2714 4.5 X 4.5 | 26D   | MC KINNEY |
| 1 | EA | PRIVACY    | 49-8265 LNJ      | 26D   | SARGENT   |
| 1 | EA | CLOSER     | 281 P9           | EN    | SARGENT   |
| 1 | EA | KICK PLATE | 10 X 34          | 32D   | ROCKWOOD  |
| 1 | EA | WALL STOP  | 409              | US32D | ROCKWOOD  |

**Hardware Set 12**

Doors: 123, 124

Each to Receive:

|   |    |            |                  |       |           |
|---|----|------------|------------------|-------|-----------|
| 3 | EA | HINGE      | TA2714 4.5 X 4.5 | 26D   | MC KINNEY |
| 1 | EA | PRIVACY    | 49-8265 LNJ      | 26D   | SARGENT   |
| 1 | EA | KICK PLATE | 10 X 34          | 32D   | ROCKWOOD  |
| 1 | EA | WALL STOP  | 409              | US32D | ROCKWOOD  |

**Hardware Set 13**

Doors: 104, 105, 106, 107, 110, 113, 114A, 114B, 121A, 125A, 128A, 129, 131, 132A, 135

Each to Receive:

|   |    |           |                  |       |           |
|---|----|-----------|------------------|-------|-----------|
| 3 | EA | HINGE     | TA2714 4.5 X 4.5 | 26D   | MC KINNEY |
| 1 | EA | CLASSROOM | 60-8237 LNJ      | 26D   | SARGENT   |
| 1 | EA | PER. CORE | 6300 CORE        | US15  | SARGENT   |
| 1 | EA | WALL STOP | 409              | US32D | ROCKWOOD  |

**Hardware Set 14**

Doors: 127

Each to Receive:

|   |    |       |                  |     |           |
|---|----|-------|------------------|-----|-----------|
| 3 | EA | HINGE | TA2714 4.5 X 4.5 | 26D | MC KINNEY |
|---|----|-------|------------------|-----|-----------|

**HITCHCOCK COUNTY SCHOOLS  
2012 ADDITIONS & RENOVATIONS  
TRENTON & CULBERTSON, NEBRASKA**

|   |    |                |             |       |          |
|---|----|----------------|-------------|-------|----------|
| 1 | EA | STOREROOM LOCK | 60-8204 LNJ | 26D   | SARGENT  |
| 1 | EA | PER. CORE      | 6300 CORE   | US15  | SARGENT  |
| 1 | EA | CLOSER         | 281 P9      | EN    | SARGENT  |
| 1 | EA | KICK PLATE     | 10 X 34     | 32D   | ROCKWOOD |
| 1 | EA | WALL STOP      | 409         | US32D | ROCKWOOD |

**Hardware Set 15**

Doors: 117, 122A, 122B

Each to Receive:

|   |    |                |                  |       |           |
|---|----|----------------|------------------|-------|-----------|
| 3 | EA | HINGE          | TA2714 4.5 X 4.5 | 26D   | MC KINNEY |
| 1 | EA | STOREROOM LOCK | 60-8204 LNJ      | 26D   | SARGENT   |
| 1 | EA | PER. CORE      | 6300 CORE        | US15  | SARGENT   |
| 1 | EA | WALL STOP      | 409              | US32D | ROCKWOOD  |

**Hardware Set 16**

Doors: 115, 130A

Each to Receive:

|   |    |               |                   |      |           |
|---|----|---------------|-------------------|------|-----------|
| 6 | EA | HINGE         | TA2714 4.5 X 4.5  | 26D  | MC KINNEY |
| 2 | EA | SURF VERT ROD | 60-NB8713 F X ETJ | 32D  | SARGENT   |
| 2 | EA | PER. CORE     | 6300 CORE         | US15 | SARGENT   |
| 2 | EA | CLOSER        | 281-PSH           | EN   | SARGENT   |
| 2 | EA | KICK PLATE    | 10 X 34           | 32D  | ROCKWOOD  |

**Hardware Set 17**

Doors: 134, 144

Each to Receive:

|   |    |               |                   |      |           |
|---|----|---------------|-------------------|------|-----------|
| 6 | EA | HINGE         | TA2714 4.5 X 4.5  | 26D  | MC KINNEY |
| 2 | EA | SURF VERT ROD | 60-NB8713 F X ETJ | 32D  | SARGENT   |
| 2 | EA | PER. CORE     | 6300 CORE         | US15 | SARGENT   |
| 2 | EA | CLOSER        | 281-PSH           | EN   | SARGENT   |
| 2 | EA | ARMOR PLATE   | 36 X 34           | 32D  | ROCKWOOD  |

**Hardware Set 18**

Doors: 120

Each to Receive:

|   |    |              |                    |     |           |
|---|----|--------------|--------------------|-----|-----------|
| 3 | EA | HINGE        | TA2714 4.5 X 4.5   | 26D | MC KINNEY |
| 1 | EA | RIM EXIT     | 60-12-8804 F X ETL | 32D | SARGENT   |
| 1 | EA | CLOSER       | 281 PS             | EN  | SARGENT   |
| 1 | EA | KICK PLATE   | 10 X 34            | 32D | ROCKWOOD  |
| 1 | EA | SILICON SEAL | S88D17             |     | PEMCO     |

**Hardware Set 19**

Doors: 143C

Each to Receive:

|   |    |             |                   |     |           |
|---|----|-------------|-------------------|-----|-----------|
| 3 | EA | HINGE       | T4A3786 5.0 X 4.5 | 26D | MC KINNEY |
| 1 | EA | OFFICE LOCK | 60-8255 LNJ       | 26D | SARGENT   |
| 1 | EA | HOLDER      | 598 S             | 26D | SARGENT   |

**HITCHCOCK COUNTY SCHOOLS  
2012 ADDITIONS & RENOVATIONS  
TRENTON & CULBERTSON, NEBRASKA**

|   |    |            |         |     |          |
|---|----|------------|---------|-----|----------|
| 1 | EA | KICK PLATE | 10 X 40 | 32D | ROCKWOOD |
|---|----|------------|---------|-----|----------|

**Hardware Set 20**

Doors: 128B

Each to Receive:

|   |    |            |                  |     |           |
|---|----|------------|------------------|-----|-----------|
| 3 | EA | HINGE      | TA2714 4.5 X 4.5 | 26D | MC KINNEY |
| 1 | EA | PRIVACY    | 49-8265 LNJ      | 26D | SARGENT   |
| 1 | EA | HOLDER     | 598 S            | 26D | SARGENT   |
| 1 | EA | KICK PLATE | 10 X 34          | 32D | ROCKWOOD  |

**Hardware Set 21**

Doors: 147

Each to Receive:

|   |    |                 |                       |       |           |
|---|----|-----------------|-----------------------|-------|-----------|
| 2 | EA | CONT HINGE      | 84" MCK-12HD Kawneer  | CLEAR | MC KINNEY |
| 1 | EA | MULLION (STD 96 | 60-L980A 96           | 28    | SARGENT   |
| 1 | EA | RIM EXIT        | 60-8504 F X 862 x 649 | 32D   | SARGENT   |
| 1 | EA | RIM EXIT        | 8510 F X 862 x 649    | 32D   | SARGENT   |
| 2 | EA | PER. CORE       | 6300 CORE             | US15  | SARGENT   |
| 2 | EA | CLOSER          | 281-PSH               | EN    | SARGENT   |
| 2 | EA | DROP PLATE      | 281-D                 | EN    | SARGENT   |
| 2 | EA | CLOSER SPACER   | 581-2                 | EN    | SARGENT   |
| 1 | EA | THRESHOLD       | 171A-72"              |       | PEMKO     |
| 2 | EA | BRUSH SWEEP     | 3452CNB36             | C     | PEMKO     |

BID ALTERNATE #4

**Hardware Set 22**

Doors: 148, 152

Each to Receive:

|   |    |             |                         |      |           |
|---|----|-------------|-------------------------|------|-----------|
| 3 | EA | HINGE       | T4A3386 4.5 X 4.5 (NRP) | 26D  | MC KINNEY |
| 1 | EA | RIM EXIT    | 60-8804 F X FSW         | 32D  | SARGENT   |
| 1 | EA | PER. CORE   | 6300 CORE               | US15 | SARGENT   |
| 1 | EA | CLOSER      | 281-PSH                 | EN   | SARGENT   |
| 1 | EA | KICK PLATE  | 10 X 34                 | 32D  | ROCKWOOD  |
| 1 | EA | THRESHOLD   | 171A-36"                |      | PEMKO     |
| 1 | EA | BRUSH SWEEP | 3452CNB36               | C    | PEMKO     |
| 1 | EA | GASKETING   | 294AV3684               | A    | PEMKO     |
| 1 | EA | DRIP CAP    | 346C-40"                |      | PEMKO     |

BID ALTERNATE #4

**TRENTON HARDWARE SETS**

**Hardware Set 1**

Doors: A111A

Each to Receive:

|   |    |                 |                      |       |           |
|---|----|-----------------|----------------------|-------|-----------|
| 2 | EA | CONT HINGE      | 84" MCK-12HD Kawneer | CLEAR | MC KINNEY |
| 1 | EA | MULLION (STD 96 | 60-L980A 96          | 28    | SARGENT   |

**FINISH HARDWARE  
08700-8**

**HITCHCOCK COUNTY SCHOOLS  
2012 ADDITIONS & RENOVATIONS  
TRENTON & CULBERTSON, NEBRASKA**

|   |    |                 |                       |      |         |
|---|----|-----------------|-----------------------|------|---------|
| 1 | EA | RIM EXIT        | 60-8504 F X 862 x 649 | 32D  | SARGENT |
| 1 | EA | RIM EXIT        | 8510 F X 862 x 649    | 32D  | SARGENT |
| 2 | EA | PER. CORE       | 6300 CORE             | US15 | SARGENT |
| 2 | EA | CLOSER          | 281-PSH               | EN   | SARGENT |
| 2 | EA | DROP PLATE      | 281-D                 | EN   | SARGENT |
| 2 | EA | CLOSER SPACER   | 581-2                 | EN   | SARGENT |
| 1 | EA | THRESHOLD       | 171A-72"              |      | PEMKO   |
| 2 | EA | BRUSH WEATHERST | 3452CNB36             | C    | PEMKO   |

**Hardware Set 2**

Doors: A100A

Each to Receive:

|   |    |                 |                       |       |           |
|---|----|-----------------|-----------------------|-------|-----------|
| 2 | EA | CONT HINGE      | 84" MCK-12HD Kawneer  | CLEAR | MC KINNEY |
| 1 | EA | MULLION (STD 96 | 60-L980A 96           | 28    | SARGENT   |
| 1 | EA | RIM EXIT        | 60-8504 F X 862 x 649 | 32D   | SARGENT   |
| 1 | EA | RIM EXIT        | 8510 F X 862 x 649    | 32D   | SARGENT   |
| 2 | EA | PER. CORE       | 6300 CORE             | US15  | SARGENT   |
| 1 | EA | PUSH BUTTON     | 4396 HP               |       | SARGENT   |
| 1 | EA | PUSH BUTTON     | 4397 HP               |       | SARGENT   |
| 1 | EA | CLOSER          | 281-PSH               | EN    | SARGENT   |
| 1 | EA | DROP PLATE      | 281-D                 | EN    | SARGENT   |
| 1 | EA | CLOSER SPACER   | 581-2                 | EN    | SARGENT   |
| 1 | EA | AUTO OPENER     | CL4051 LH             | EN    | SARGENT   |
| 1 | EA | THRESHOLD       | 171A-72"              |       | PEMKO     |
| 2 | EA | BRUSH WEATHERST | 3452CNB36             | C     | PEMKO     |

**Hardware Set 3**

Doors: B107

Each to Receive:

|   |    |                 |                       |       |           |
|---|----|-----------------|-----------------------|-------|-----------|
| 2 | EA | CONT HINGE      | 84" MCK-12HD Kawneer  | CLEAR | MC KINNEY |
| 1 | EA | MULLION (STD 96 | 60-L980A 96           | 28    | SARGENT   |
| 1 | EA | RIM EXIT        | 60-8504 F X 862 x 649 | 32D   | SARGENT   |
| 1 | EA | RIM EXIT        | 8510 F X 862 x 649    | 32D   | SARGENT   |
| 2 | EA | PER. CORE       | 6300 CORE             | US15  | SARGENT   |
| 1 | EA | CLOSER          | 281-PSH               | EN    | SARGENT   |
| 1 | EA | DROP PLATE      | 281-D                 | EN    | SARGENT   |
| 1 | EA | CLOSER SPACER   | 581-2                 | EN    | SARGENT   |
| 1 | EA | THRESHOLD       | 171A-72"              |       | PEMKO     |
| 2 | EA | BRUSH WEATHERST | 3452CNB36             | C     | PEMKO     |

Auto opener relocated from A116

**Hardware Set 4**

Doors: A100B

Each to Receive:

|   |    |                 |                       |       |           |
|---|----|-----------------|-----------------------|-------|-----------|
| 2 | EA | CONT HINGE      | 83" MCK-12HD Kawneer  | CLEAR | MC KINNEY |
| 1 | EA | MULLION (STD 96 | 60-EL980 A 96         | US28  | SARGENT   |
| 1 | EA | RIM EXIT        | 60-8504 F X 862 x 649 | 32D   | SARGENT   |
| 1 | EA | RIM EXIT        | 8510 F X 862 x 649    | 32D   | SARGENT   |

**FINISH HARDWARE  
08700-9**

**HITCHCOCK COUNTY SCHOOLS  
2012 ADDITIONS & RENOVATIONS  
TRENTON & CULBERTSON, NEBRASKA**

|   |    |               |                                  |      |            |
|---|----|---------------|----------------------------------|------|------------|
| 2 | EA | PER. CORE     | 6300 CORE                        | US15 | SARGENT    |
| 2 | EA | ELEC STRIKE   | 9600                             | 630  | H          |
| 1 | EA | PUSH BUTTON   | 4396 HP                          |      | SARGENT    |
| 1 | EA | PUSH BUTTON   | 4397 HP                          |      | SARGENT    |
| 1 | EA | CLOSER        | 281-PSH                          | EN   | SARGENT    |
| 1 | EA | DROP PLATE    | 281-D                            | EN   | SARGENT    |
| 1 | EA | CLOSER SPACER | 581-2                            | EN   | SARGENT    |
| 1 | EA | AUTO OPENER   | CL4051 LH                        | EN   | SARGENT    |
| 2 | EA | Timer         | DT-7: Prime Time 7 Day Dig.Timer |      | SECURITRON |

**Hardware Set 5**

Doors: A101, A103, A10A, A119

Each to Receive:

|   |    |             |                  |       |           |
|---|----|-------------|------------------|-------|-----------|
| 3 | EA | HINGE       | TA2714 4.5 X 4.5 | 26D   | MC KINNEY |
| 1 | EA | OFFICE LOCK | 60-8255 LNJ      | 26D   | SARGENT   |
| 1 | EA | PER. CORE   | 6300 CORE        | US15  | SARGENT   |
| 1 | EA | WALL STOP   | 409              | US32D | ROCKWOOD  |

**Hardware Set 6**

Doors: A102A

Each to Receive:

|   |    |             |                  |      |           |
|---|----|-------------|------------------|------|-----------|
| 3 | EA | HINGE       | TA2714 4.5 X 4.5 | 26D  | MC KINNEY |
| 1 | EA | OFFICE LOCK | 60-8255 LNJ      | 26D  | SARGENT   |
| 1 | EA | PER. CORE   | 6300 CORE        | US15 | SARGENT   |
| 1 | EA | HOLDER      | 598 S            | 26D  | SARGENT   |

**Hardware Set 7**

Doors: A102B, A104B, A104C, A125A

Each to Receive:

|   |    |             |                  |       |           |
|---|----|-------------|------------------|-------|-----------|
| 3 | EA | HINGE       | TA2714 4.5 X 4.5 | 26D   | MC KINNEY |
| 1 | EA | OFFICE LOCK | 60-8255 LNJ      | 26D   | SARGENT   |
| 1 | EA | PER. CORE   | 6300 CORE        | US15  | SARGENT   |
| 1 | EA | CLOSER      | 281-O            | EN    | SARGENT   |
| 1 | EA | KICK PLATE  | 10 X 34          | 32D   | ROCKWOOD  |
| 1 | EA | WALL STOP   | 409              | US32D | ROCKWOOD  |

**Hardware Set 7.5**

Doors: A102C, A120

Each to Receive:

|   |    |             |                  |      |           |
|---|----|-------------|------------------|------|-----------|
| 3 | EA | HINGE       | TA2714 4.5 X 4.5 | 26D  | MC KINNEY |
| 1 | EA | OFFICE LOCK | 60-8255 LNJ      | 26D  | SARGENT   |
| 1 | EA | PER. CORE   | 6300 CORE        | US15 | SARGENT   |
| 1 | EA | CLOSER      | 281-PSH          | EN   | SARGENT   |
| 1 | EA | KICK PLATE  | 10 X 34          | 32D  | ROCKWOOD  |

**Hardware Set 8**

Doors: A104A

Each to Receive:

**HITCHCOCK COUNTY SCHOOLS  
2012 ADDITIONS & RENOVATIONS  
TRENTON & CULBERTSON, NEBRASKA**

|   |    |            |                  |       |           |
|---|----|------------|------------------|-------|-----------|
| 3 | EA | HINGE      | TA2714 4.5 X 4.5 | 26D   | MC KINNEY |
| 1 | EA | PRIVACY    | 49-8265 LNJ      | 26D   | SARGENT   |
| 1 | EA | CLOSER     | 281-O            | EN    | SARGENT   |
| 1 | EA | KICK PLATE | 10 X 34          | 32D   | ROCKWOOD  |
| 1 | EA | WALL STOP  | 409              | US32D | ROCKWOOD  |

**Hardware Set 9**

Doors: A111B

Each to Receive:

|   |    |               |                      |       |           |
|---|----|---------------|----------------------|-------|-----------|
| 2 | EA | CONT HINGE    | 83" MCK-12HD Kawneer | CLEAR | MC KINNEY |
| 2 | EA | DUMMY RAIL    | 8893                 | 32D   | SARGENT   |
| 2 | EA | D STYLE PULL  | 862                  | 32D   | SARGENT   |
| 2 | EA | CLOSER        | 281-PSH              | EN    | SARGENT   |
| 2 | EA | DROP PLATE    | 281-D                | EN    | SARGENT   |
| 2 | EA | CLOSER SPACER | 581-2                | EN    | SARGENT   |

**Hardware Set 10**

Doors: A128A, A128C, B110

Each to Receive:

|   |    |                 |                         |      |           |
|---|----|-----------------|-------------------------|------|-----------|
| 3 | EA | HINGE           | T4A3386 4.5 X 4.5 (NRP) | 26D  | MC KINNEY |
| 1 | EA | RIM EXIT        | 60-8804 F X FSW         | 32D  | SARGENT   |
| 1 | EA | PER. CORE       | 6300 CORE               | US15 | SARGENT   |
| 1 | EA | CLOSER          | 281-PSH                 | EN   | SARGENT   |
| 1 | EA | KICK PLATE      | 10 X 34                 | 32D  | ROCKWOOD  |
| 1 | EA | THRESHOLD       | 171A-36"                |      | PEMKO     |
| 1 | EA | BRUSH WEATHERST | 3452CNB36               | C    | PEMKO     |
| 1 | EA | GASKETING       | 294AV3684               | A    | PEMKO     |
| 1 | EA | DRIP CAP        | 346C-40"                |      | PEMKO     |

**Hardware Set 11**

Doors: A117, A118, A123, A124

Each to Receive:

|   |    |            |                  |       |           |
|---|----|------------|------------------|-------|-----------|
| 3 | EA | HINGE      | TA2714 4.5 X 4.5 | 26D   | MC KINNEY |
| 1 | EA | PULL PLATE | 107 X 70C 4 X 16 | US32D | ROCKWOOD  |
| 1 | EA | PUSH PLATE | 70C 4 X 16       | US32D | ROCKWOOD  |
| 1 | EA | CLOSER     | 281-O            | EN    | SARGENT   |
| 1 | EA | KICK PLATE | 10 X 34          | 32D   | ROCKWOOD  |
| 1 | EA | WALL STOP  | 409              | US32D | ROCKWOOD  |

**Hardware Set 12**

Doors: A127

Each to Receive:

|   |    |            |                         |       |           |
|---|----|------------|-------------------------|-------|-----------|
| 6 | EA | HINGE      | T4A3386 4.5 X 4.5 (NRP) | 26D   | MC KINNEY |
| 2 | EA | FLUSH BOLT | 555-12"                 | US26D | ROCKWOOD  |
| 1 | EA | ENTRY LOCK | 60-8245 LNJ             | 26D   | SARGENT   |
| 1 | EA | PER. CORE  | 6300 CORE               | US15  | SARGENT   |
| 2 | EA | CLOSER     | 281-PSH                 | EN    | SARGENT   |

**HITCHCOCK COUNTY SCHOOLS  
2012 ADDITIONS & RENOVATIONS  
TRENTON & CULBERTSON, NEBRASKA**

|   |    |                 |           |     |          |
|---|----|-----------------|-----------|-----|----------|
| 2 | EA | KICK PLATE      | 10 X 34   | 32D | ROCKWOOD |
| 1 | EA | THRESHOLD       | 171A-72"  |     | PEMKO    |
| 2 | EA | BRUSH WEATHERST | 3452CNB36 | C   | PEMKO    |
| 1 | EA | GASKETING       | 294AV7284 | A   | PEMKO    |
| 1 | EA | DRIP CAP        | 346C-76"  |     | PEMKO    |

**Hardware Set 13**

Doors: A106, A107, A109A, A109B, A113, A114A, A114B, A115, A128D

Each to Receive:

|   |    |           |                  |       |           |
|---|----|-----------|------------------|-------|-----------|
| 3 | EA | HINGE     | TA2714 4.5 X 4.5 | 26D   | MC KINNEY |
| 1 | EA | CLASSROOM | 60-8237 LNJ      | 26D   | SARGENT   |
| 1 | EA | PER. CORE | 6300 CORE        | US15  | SARGENT   |
| 1 | EA | WALL STOP | 409              | US32D | ROCKWOOD  |

**Hardware Set 14**

Doors: A122, A129, A131

Each to Receive:

|   |    |                |                  |       |           |
|---|----|----------------|------------------|-------|-----------|
| 3 | EA | HINGE          | TA2714 4.5 X 4.5 | 26D   | MC KINNEY |
| 1 | EA | STOREROOM LOCK | 60-8204 LNJ      | 26D   | SARGENT   |
| 1 | EA | PER. CORE      | 6300 CORE        | US15  | SARGENT   |
| 1 | EA | CLOSER         | 281-O            | EN    | SARGENT   |
| 1 | EA | KICK PLATE     | 10 X 34          | 32D   | ROCKWOOD  |
| 1 | EA | WALL STOP      | 409              | US32D | ROCKWOOD  |

**Hardware Set 15**

Doors: B100A, B101A, B102A, B103A, B104A, B105A, B105B, B106A

Each to Receive:

|   |    |                |                  |       |           |
|---|----|----------------|------------------|-------|-----------|
| 3 | EA | HINGE          | TA2714 4.5 X 4.5 | 26D   | MC KINNEY |
| 1 | EA | STOREROOM LOCK | 60-8204 LNJ      | 26D   | SARGENT   |
| 1 | EA | PER. CORE      | 6300 CORE        | US15  | SARGENT   |
| 1 | EA | WALL STOP      | 409              | US32D | ROCKWOOD  |

**Hardware Set 24**

Doors: A110

Each to Receive:

|   |    |              |                  |       |           |
|---|----|--------------|------------------|-------|-----------|
| 3 | EA | HINGE        | TA2714 4.5 X 4.5 | 26D   | MC KINNEY |
| 1 | EA | CLASSROOM    | 60-8237 LNJ      | 26D   | SARGENT   |
| 1 | EA | PER. CORE    | 6300 CORE        | US15  | SARGENT   |
| 1 | EA | CLOSER       | 281-PSH          | EN    | SARGENT   |
| 1 | EA | KICK PLATE   | 10 X 34          | 32D   | ROCKWOOD  |
| 1 | EA | WALL STOP    | 409              | US32D | ROCKWOOD  |
| 1 | EA | SILICON SEAL | S88D17           |       | PEMKO     |



## GENERAL NOTES:

1. VERIFY WITH NEW LAYOUT EXACT LOCATION OF NEW PAVING FOR AREA TO BE REMOVED. REMOVE SUB BASE & EXISTING SOIL PER GEOTECHNICAL REPORT AND NEW TOPOGRAPHY FOR LAYOUT OF NEW BUILDING. COORDINATE WITH GEOTECHNICAL ENGINEER. VERIFY ALL UNDERGROUND UTILITIES & STRUCTURES TO REMAIN AND MAINTAIN IN WORKING CONDITION.
2. ALL UNDERGROUND AND ABOVE GROUND UTILITIES WITHIN DEMOLITION BOUNDARIES ARE TO REMAIN UNLESS OTHERWISE INSTRUCTED. COORDINATE ALL UTILITIES WORK SHOWN IN THIS PLAN WITH THE MECHANICAL/ ELECTRICAL PLANS, THE CITY AND ALL UTILITY COMPANIES. GENERAL CONTRACTOR SHALL VERIFY ALL UTILITIES SHOWN IN PLANS TO BE REMOVED HAVE BEEN COMPLETED.
3. IT IS THE CONTRACTOR'S RESPONSIBILITY TO FIELD VERIFY ALL EXISTING CONDITIONS PRIOR TO BIDDING INCLUDING, BUT NOT LIMITED TO ALL UTILITY AND STRUCTURAL LOCATIONS PRIOR TO DEMOLITION. INFORMATION SHOWN IS BASED UPON FIELD SURVEY, HOWEVER ALL INFORMATION MAY OR MAY NOT BE SHOWN. NOTIFY ARCHITECT OF ANY AREAS OF DISCREPANCY PRIOR TO DEMOLITION.
4. CONTRACTOR IS TO REMOVE ALL STRUCTURES FOUNDATIONS, SLABS, DRIVES, WALKS, PAVED AREAS, AND VEGETATION AS SPECIFIED WITHIN AREA OF NEW CONSTRUCTION UNLESS OTHERWISE INSTRUCTED TO COMPLETE NEW SITE IMPROVEMENTS. SEE SHEET KEYNOTES AND SITE PLAN FOR ADDITIONAL INFORMATION.
5. CONTRACTOR IS RESPONSIBLE TO RETURN ALL DAMAGED EXISTING SITE ITEMS ABOVE OR BELOW GROUND RESULTING FROM DEMOLITION & CONSTRUCTION TO PRE-EXISTING CONDITIONS AT NO COST TO THE OWNER.
6. CONTRACTOR IS RESPONSIBLE FOR THE REMOVAL AND DISPOSAL OF ALL DEMOLISHED AND REMOVED ITEMS NOT TO BE REUSED AND DISPOSE OF LEGALLY OFF SITE IN ACCORDANCE WITH ALL GOVERNMENT REGULATIONS.
7. CONTRACTOR TO OBTAIN AND HAVE ON SITE ALL PERMITS REQUIRED BY LOCAL JURISDICTION PRIOR TO DEMOLITION & CONSTRUCTION.
8. PRIOR TO ANY EXCAVATION OR LAND DISTURBANCE, CALL THE DIGGERS HOTLINE OF NEBRASKA BEFORE YOU DIG TO HAVE ALL UTILITIES LOCATED AND MARKED.

### **TITLE**

General Notes

### **PROJECT**

Hitchcock County Schools  
Culbertson Building

**DATE:** January 26th, 2012

**DRAWING:** C100-1

**FROM SHEET:** C100

**NORTH PLATTE:**

**NORTH PLATTE, NE 69101  
PHONE (308) 532-0411  
FAX: (308) 532-1202**

## DEMOLITION NOTES:



1. REMOVE EXISTING BUILDING STRUCTURE OUTLINED. FILL AND COMPACT SOIL PER SOILS REPORT AND SPECIFICATIONS. SEE SHEET A100.
2. REMOVE EXISTING ITEMS FROM WALL OF EXISTING STRUCTURE PER ARCHITECTURAL/MECHANICAL/ELECTRICAL DRAWINGS ALONG AREA OF NEW ADDITION. SEE SHEET A100.
3. REMOVE TO EXTENT SHOWN ON PLANS EXISTING STRUCTURE, UTILITIES, CONCRETE & ASPHALT PAVING AND CURBS IN AREA OF NEW BUILDING CONSTRUCTION. SEE SITE PLAN.
4. REMOVE EXISTING UTILITY. COORDINATE WITH MECHANICAL/ ELECTRICAL PLANS, CITY AND UTILITY COMPANY.
5. REMOVE EXISTING LIGHT POLE AND GUY WIRE (WHERE APPLICABLE). COORDINATE WITH MECHANICAL/ ELECTRICAL PLANS.
6. REMOVE EXISTING CONCRETE CURB. SEE SITE PLAN.
7. REMOVE EXISTING CONCRETE STOOP AT NORTH GYMNASIUM BUILDING. SEE SHEET A100.
8. REMOVE EXISTING CONCRETE SIDEWALK.
9. REMOVE EXISTING CONCRETE PAVING.
10. REMOVE EXISTING ASPHALT PAVING.
11. REMOVE EXISTING CABLE FENCE AND WOOD POSTS.
12. REMOVE EXISTING CONCRETE FLUME AND PVC PIPE.
13. REMOVE EXISTING PVC DRAINAGE PIPE.
14. REMOVE EXISTING VEGETATION/BUSHES/TREE.
15. REMOVE AND RELOCATE EXISTING SIGN.
16. REMOVE EXISTING PIPE BOLLARD.
17. REMOVE EXISTING GRAVEL.
18. REMOVE EXISTING SATELLITE DISH AND CONCRETE PAD. COORDINATE WITH MECHANICAL/ ELECTRICAL PLANS.
19. REMOVE EXISTING SPLASHBLOCK AND SALVAGE FOR OWNER.
20. REMOVE EXISTING CONCRETE PILE OF RUBBLE.
21. REMOVE EXISTING STAIRS, WALL AND FOUNDATION. SEE SHEET A100.
22. EXISTING CONCRETE STAIRS TO REMAIN.
23. EXISTING CONCRETE FLUME TO REMAIN.
24. PROTECT AND SALVAGE EXISTING UNDERGROUND SPRINKLER SYSTEM TO HIGHEST EXTENT POSSIBLE. CAP ENDS.

### TITLE

Demolition Notes

### PROJECT

Hitchcock County Schools  
Culbertson Building

**DATE:** January 26th, 2012

**DRAWING:** C100-2

**FROM SHEET:** C100

**NORTH PLATTE:**

**NORTH PLATTE, NE 69101  
PHONE (308) 532-0411  
FAX: (308) 532-1202**

## GENERAL NOTES:

1. VERIFY WITH NEW LAYOUT EXACT LOCATION OF NEW PAVING FOR AREA TO BE REMOVED. REMOVE SUB BASE & EXISTING SOIL PER GEOTECHNICAL ENGINEERING REPORT AND NEW TOPOGRAPHY FOR LAYOUT OF NEW BUILDING. COORDINATE WITH GEOTECHNICAL ENGINEER. VERIFY ALL UNDERGROUND UTILITIES & STRUCTURES TO REMAIN AND MAINTAIN IN WORKING CONDITION.
2. ALL UNDERGROUND AND ABOVE GROUND UTILITIES WITHIN DEMOLITION BOUNDARIES ARE TO REMAIN UNLESS OTHERWISE INSTRUCTED. COORDINATE ALL UTILITIES WORK SHOWN IN THIS PLAN WITH THE MECHANICAL/ ELECTRICAL PLANS, THE CITY AND ALL UTILITY COMPANIES. GENERAL CONTRACTOR SHALL VERIFY ALL UTILITIES SHOWN IN PLANS TO BE REMOVED HAVE BEEN COMPLETED.
3. IT IS THE CONTRACTOR'S RESPONSIBILITY TO FIELD VERIFY ALL EXISTING CONDITIONS PRIOR TO BIDDING INCLUDING, BUT NOT LIMITED TO ALL UTILITY AND STRUCTURAL LOCATIONS PRIOR TO DEMOLITION. INFORMATION SHOWN IS BASED UPON FIELD SURVEY, HOWEVER ALL INFORMATION MAY OR MAY NOT BE SHOWN. NOTIFY ARCHITECT OF ANY AREAS OF DISCREPANCY PRIOR TO DEMOLITION.
4. CONTRACTOR IS TO REMOVE ALL STRUCTURES FOUNDATIONS, SLABS, DRIVES, WALKS, PAVED AREAS, AND VEGETATION AS SPECIFIED WITHIN AREA OF NEW CONSTRUCTION UNLESS OTHERWISE INSTRUCTED TO COMPLETE NEW SITE IMPROVEMENTS. SEE SHEET KEYNOTES AND SITE PLAN FOR ADDITIONAL INFORMATION.
5. CONTRACTOR IS RESPONSIBLE TO RETURN ALL DAMAGED EXISTING SITE ITEMS ABOVE OR BELOW GROUND RESULTING FROM DEMOLITION & CONSTRUCTION TO PRE-EXISTING CONDITIONS AT NO COST TO THE OWNER.
6. CONTRACTOR IS RESPONSIBLE FOR THE REMOVAL AND DISPOSAL OF ALL DEMOLISHED AND REMOVED ITEMS NOT TO BE REUSED AND DISPOSE OF LEGALLY OFF SITE IN ACCORDANCE WITH ALL GOVERNMENT REGULATIONS.
7. CONTRACTOR TO OBTAIN AND HAVE ON SITE ALL PERMITS REQUIRED BY LOCAL JURISDICTION PRIOR TO DEMOLITION & CONSTRUCTION.
8. PRIOR TO ANY EXCAVATION OR LAND DISTURBANCE, CALL THE DIGGERS HOTLINE OF NEBRASKA BEFORE YOU DIG TO HAVE ALL UTILITIES LOCATED AND MARKED.

### TITLE

General Notes

### PROJECT

Hitchcock County Schools  
Trenton Building

## ALTERNATE NO. 1 NOTES:



THE UPSIDE DOWN TRIANGLE SYMBOL ADJACENT TO ANY DEMOLITION NOTE SYMBOL SIGNIFIES THAT THE ITEM IS TO BE DEMOLISHED FOR ACCEPTANCE OF ALTERNATE NUMBER 1 ONLY.

**DATE:** January 26th, 2012

**DRAWING:** C100-1

**FROM SHEET:** C100

**NORTH PLATTE:**

**NORTH PLATTE, NE 69101  
PHONE (308) 532-0411  
FAX: (308) 532-1202**

## DEMOLITION NOTES:



1. REMOVE EXISTING BUILDING STRUCTURE OUTLINED. FILL AND COMPACT SOIL PER GEOTECHNICAL ENGINEERING REPORT AND SPECIFICATIONS.
2. REMOVE EXISTING ITEMS FROM WALL OF EXISTING STRUCTURE PER ARCHITECTURAL/MECHANICAL/ELECTRICAL DRAWINGS ALONG AREA OF NEW ADDITION.
3. REMOVE TO EXTENT SHOWN ON PLANS EXISTING STRUCTURE, UTILITIES, CONCRETE & ASPHALT PAVING AND CURBS IN AREA OF NEW BUILDING CONSTRUCTION.
4. REMOVE EXISTING UTILITY. COORDINATE WITH MECHANICAL/ ELECTRICAL PLANS, CITY AND UTILITY COMPANY.
5. REMOVE EXISTING LIGHT POLE AND GUY WIRE (WHERE APPLICABLE). COORDINATE WITH ELECTRICAL PLANS, CITY AND UTILITY COMPANY.
6. REMOVE EXISTING TRANSFORMERS. COORDINATE WITH ELECTRICAL PLANS, CITY AND UTILITY COMPANY.
7. REMOVE EXISTING STRUCTURAL STOOP.
8. REMOVE EXISTING CONCRETE PAVING.
9. REMOVE EXISTING CONCRETE CURB AND GUTTER.
10. REMOVE AND RELOCATE EXISTING PROPANE TANKS. REMOVE EXISTING CONCRETE FOUNDATIONS AND SURROUNDING ROCK.
11. REMOVE EXISTING METER AND UNDERGROUND PROPANE TANK. PROVIDE ALLOWANCE FOR TEST PIT. SEE SPECIFICATIONS.
12. REMOVE EXISTING BASKETBALL HOOP/ POLE AND TENNIS NET POLES. SALVAGE FOR OWNER.
13. REMOVE EXISTING OIL TANKS AND BASINS.
14. REMOVE EXISTING BELL AND SALVAGE FOR INSTALLATION AT NEW LOCATION. REMOVE EXISTING BASE & CONCRETE BELOW.
15. PROTECT EXISTING TREE AT DRIP-LINE PERIMETER FROM EXCAVATION & COMPACTION WITH TEMPORARY BARRIER DEVICE.
16. REMOVE EXISTING AIR CONDITIONING UNIT.
17. RELOCATE TRASH DUMPSTERS. BY REFUSE COMPANY.
18. EXCAVATION FOR NEW FROST STRUCTURAL STOOP. VERIFY ALL LOCATIONS WITH ARCHITECTURAL AND STRUCTURAL PLANS.
19. REMOVE EXISTING CONCRETE SIDEWALK.
20. REMOVE EXISTING FENCE AND FENCE POSTS.
21. REMOVE ANY EXISTING STRUCTURAL STOOPS AND CONCRETE FOUNDATIONS FROM PRIOR EXISTING BUILDING.

### TITLE

Demolition Notes

### PROJECT

Hitchcock County Schools  
Trenton Building

DATE: January 26th, 2012

DRAWING: C100-2

FROM SHEET: C100

**NORTH PLATTE:**

**NORTH PLATTE, NE 69101  
PHONE (308) 532-0411  
FAX: (308) 532-1202**







DATE ISSUED January 26, 2012

ADDENDUM # 2

ENGINEER Engineering Technologies, Inc.
825 M Street, Suite 200
Lincoln, NE 68508

PROJECT Hitchcock County Schools

ETI PROJECT # 2011-087

The Architect issues this Addendum to all known bidders before receipt of proposals. Bidder shall acknowledge the receipt of this addendum on their proposal sheet and all information contained herein shall become a part of the contract documents.

ADDENDUM:

PRIOR APPROVAL – MECHANICAL

- 1. The following manufacturers have received prior approval for bidding purposes subject to shop drawing review:
A. Pumps Armstrong
B. Hydronic Specialties Armstrong
C. Floor Drains Watts
D. Cleanouts Watts
E. Boiler Lochinvar
F. Flow Control Valves Nexus

DRAWINGS – MECHANICAL

Culbertson

- 1. Sheet M400 Mechanical Schedules, Risers & Symbols
A. Boiler (B-1, B-2) shall be 40psig design in lieu of 30psig design. Boiler relief valve is to be 75psi. Provide a tee with a condensate drain on boiler flue. Condensate drain shall be connected to condensate drain at back of boiler. Extend condensate drain to over nearest floor drain.

Trenton

- 1. Sheet ME100 Mechanical/Electrical Site Plan
A. See attached drawing M1 for rainwater piping.
2. Sheet M200 Plumbing/Mechanical Plan – Area “A”
A. See attached drawing M2 for rainwater piping.
3. Sheet M201 Plumbing/Mechanical Plan – Area “B”
A. Roof Drains (RD-1), Overflow Roof Drains (ORD-1) and all associated piping shall not be installed as shown is the following areas: Above Boiler Rm. B111 and above Existing Storage to the west of Existing Kitchen.
4. Sheet M300 HVAC Plan – Area “A”
A. Provide alternate pricing for an equivalently sized oval duct to run thru basketball backboard support as required.
5. Sheet M400 Mechanical Schedules, Risers & Symbols
A. Boiler (B-1, B-2) shall be 40psig design in lieu of 30psig design. Boiler relief valve is to be 75psi. Provide a tee with a condensate drain on boiler flue. Condensate drain shall be connected to condensate drain at back of boiler. Extend condensate drain to over nearest floor drain.

GENERAL ITEMS – ELECTRICAL

- 1. Only voice cabling is to be removed at Trenton Junior High. See E101 for reference. Please take all necessary precautions to ensure that all existing data cabling remains and is undamaged. All existing data cabling will be relocated to the new data closet and retested. See E301 note #18 for reference.

PRIOR APPROVAL – ELECTRICAL

- 1. The following manufacturers have received prior approval for bidding purposes subject to shop drawing review:

|  |                                      |
|--|--------------------------------------|
| A. Fire Alarm System                                       | Silent Knight, Notifier, Edwards EST |
| B. Occupancy Sensors                                       | Leviton                              |
| C. Light Fixture types 6, 12                               | Kenall                               |
| D. Light Fixture types 11, 11E, 22, 22E, 23, 23E           | Eclipse                              |
| E. Light Fixture types 15B, 16B, 17, 18, 20B, 21, 21B, 27B | Dual-Lite                            |
| F. Light Fixture type 25                                   | Columbia                             |
| G. Master Clock  | Bogen BCMA 3000                      |

## DRAWINGS – ELECTRICAL

### Culbertson

1. Sheet E200, Lighting Plan – Area “A”
  - A. Existing Gym:
    - i. Delete two (2) type 17 fixtures at east and west walls of gym.
    - ii. Change type 18 exit lights to type 8.
    - iii. See attached drawing E2 for addition of type 31E fixtures.
  - B. Type 15E light fixture on north exterior wall shall be connected to power circuit J-37 and lighting control circuit LCPA-4.
2. Sheet E201, Lighting Plan – Areas “B” & “C”
  - A. Lighting Plan Area “B”:
    - i. Add one (1) type 15 light fixture on center of south exterior wall between Classrooms 105 and 106. Connect to power circuit J-34 and lighting control circuit LCPA-5.
    - ii. Two (2) type 15E fixtures, one (1) type 20 fixture and one (1) type 20E fixture on south exterior of building shall be connected to power circuit J-34 and lighting control circuit LCPA-5 (along with three type 30 light fixtures shown on south wall of area “A”).
    - iii. Three (3) type 20E light fixtures at east and north exterior walls shall be connected to power circuit J-37 and lighting control circuit LCPA-4.
  - B. Lighting Plan Area “C”:
    - i. Add one (1) type 15 light fixture on center of west exterior wall between Future Storage 127 and Classroom 128a. Connect to power circuit J-37 and lighting control circuit LCPA-4.
    - ii. All exterior lighting shown in Area “C” plan shall be connected to power circuit J-37 and lighting control circuit LCPA-4.
3. Sheet E300, Power Plan – Area “A”
  - A. Change fire alarm horn/strobe to a speaker/strobe in corridor west of Music 142, at northeast gym exit, on east and west walls of gym, and in short corridor in southwest corner of gym, leading out of locker area.
4. Sheet E400, Electrical Schedules & Details
  - A. Add Lighting Controller Schedule. Reference attachment E1 for schedule.
  - B. Light Fixture Schedule:
    - i. Revise type #13, Lithonia FGB14-3-32-ACL-N1-X20U-MVOLT-GEB10IS-TCP-WG.
    - ii. Add type #31E, Lithonia FGB14-2-32-ACL-N1-X20U-MVOLT-GEB10IS-TCP-WG-EL14.

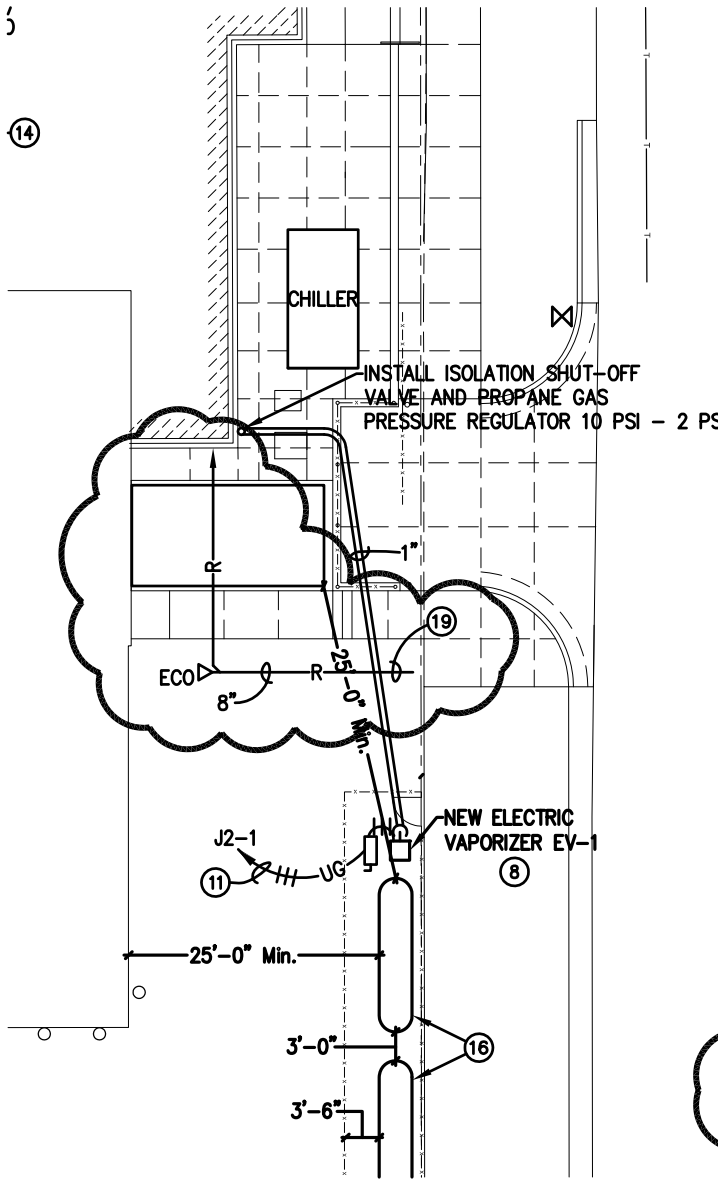
### Trenton

1. Sheet E200, Lighting Plan – Area “A”
  - A. All work in Shop 128, Janitor 129, and Corridor 130 shall be bid as part of Bid Alternate No. 1.
  - B. Bid Alt. #1 Shop 128 – See attached drawing E3 for revisions to ceiling mounted fixtures.
  - C. Existing Gym:
    - i. Delete six (6) type 17 fixtures.
    - ii. Change type 18 exit lights to type 8.
    - iii. See attached drawings E4 for addition of type 31E fixtures.
2. Sheet E201, Lighting Plan – Area “B”
  - A. Existing Gym:
    - i. Delete one (1) type 17 light fixture.
    - ii. See attached drawing E5 for revisions to ceiling mounted fixtures.
  - B. Kitchen Rec./Dry Storage B110 – Rotate three (3) type 9 light fixtures 90 degrees, and mount as high as possible, below ductwork.
3. Sheet E300, Power Plan – Area “A”
  - A. Add a fire alarm speaker/strobe in large locker room in southeast corner of building.
4. Sheet E400, Electrical Schedules & Details
  - A. Light Fixture Schedule:
    - i. Revise type #13, Lithonia FGB14-3-32-ACL-N1-X20U-MVOLT-GEB10IS-TCP-WG.
    - ii. Add type #13E, Lithonia FGB14-3-32-ACL-N1-X20U-MVOLT-GEB10IS-TCP-WG-EL14.
    - iii. Add type #31E, Lithonia FGB14-2-32-ACL-N1-X20U-MVOLT-GEB10IS-TCP-WG-EL14.

END OF ADDENDUM

# **SHEET NOTES**

1. UNDERGROUND SECONDARY ELECTRICAL SERVICE, SEE ELECTRICAL RISER DIAGRAM, SHEET E500. INSTALL AT 36" MINIMUM BELOW FINISHED GRADE, WITH WARNING TAPE ABOVE AT 18" BELOW GRADE.
2. USE #8 AWG CONDUCTORS.
3. INSTALL POLE BASE 36" FROM BACK OF CURB TO CENTER OF BASE.
4. CONNECT FIRE SPRINKLER POST INDICATOR VALVE (PIV) TO FIRE ALARM SYSTEM. USE 2-#12, #12 GND., IN ¾" CONDUIT.
5. CORE DRILL OR SAW CUT EXISTING FOUNDATION AND CONCRETE FLOOR, AS REQUIRED TO REMOVE CONCRETE FOR NEW SERVICE CONDUITS. PATCH TO MATCH EXISTING FINISHES.
6. ALL WORK ASSOCIATED WITH THIS PARKING LOT LIGHT FIXTURE SHALL BE BID AS PART OF ALTERNATE NO. 1.
7. THIS PARKING LOT LIGHT FIXTURE SHALL BE BASE BID WORK. INCLUDE IN BASE BID A CONDUIT STUB OUT PAST SIDEWALK FOR FUTURE PARKING LOT LIGHTING.
8. ALL WIRING ASSOCIATED WITH THE ELECTRIC VAPORIZER SHALL BE INSTALLED IN ACCORDANCE WITH THE NEC FOR A CLASS 1, DIVISION 1 HAZARDOUS LOCATION.
9. INSTALL FIXTURE 12'-0" FROM CENTER OF FLAG POLE AND ORIENT TO PROVIDE MAXIMUM UNIFORMITY ON FLAG, REFERENCE DETAIL 1, SHEET E400, FOR MOUNTING INFORMATION.
10. CONNECT CIRCUIT THROUGH LIGHTING CONTROL PANEL "LCP1", USE #10 AWG THROUGHOUT. INSTALL 30" MINIMUM BELOW FINISHED GRADE.
11. EXISTING UTILITY PEDESTAL. COORDINATE REMOVAL WITH LOCAL UTILITY.
12. PROVIDE A 2" CONDUIT FOR TELEVISION AND A 3" CONDUIT FOR TELEPHONE. INSTALL AT 36" MINIMUM BELOW FINISHED GRADE WITH WARNING TAPE AT 18" BELOW GRADE. COORDINATE EXACT LOCATION OF PEDESTALS WITH LOCAL UTILITIES.
13. PROVIDE A 3" CONDUIT FOR FIBER. INSTALL AT 36" MINIMUM BELOW FINISHED GRADE FROM MECH 131 TO CRAWL SPACE.
14. TAP EXISTING WATER MAIN FOR NEW WATER SERVICES WITH VALVE AND SLEEVE OR AS REQUIRED BY CITY.
15. RELOCATED EXISTING PROPANE TANKS. SEE "PROPANE TANK PIPING CONNECTION DETAIL" ON SHEET M401.
16. PAD MOUNTED TRANSFORMER, METERING, AND TRANSFORMER BASE SHALL BE FURNISHED AND INSTALLED BY THE UTILITY COMPANY.
17. PANEL "MD2" FEEDER, SEE ELECTRICAL RISER DIAGRAM, SHEET E500.
18. PAD MOUNTED TRANSFORMER, METERING, AND TRANSFORMER PAD SHALL BE BY THE UTILITY COMPANY.
19. RUN NEW 8" RAINWATER PIPING TO NEW CONCRETE FLUME. SEE ARCHITECTURAL SITE PLAN. CUT PIPE OFF AT 45° ANGLE AND PROVIDE BIRDSCREEN.



Hitchcock County  
 Schools-Trenton Building  
 Mech./Elec. Site Plan

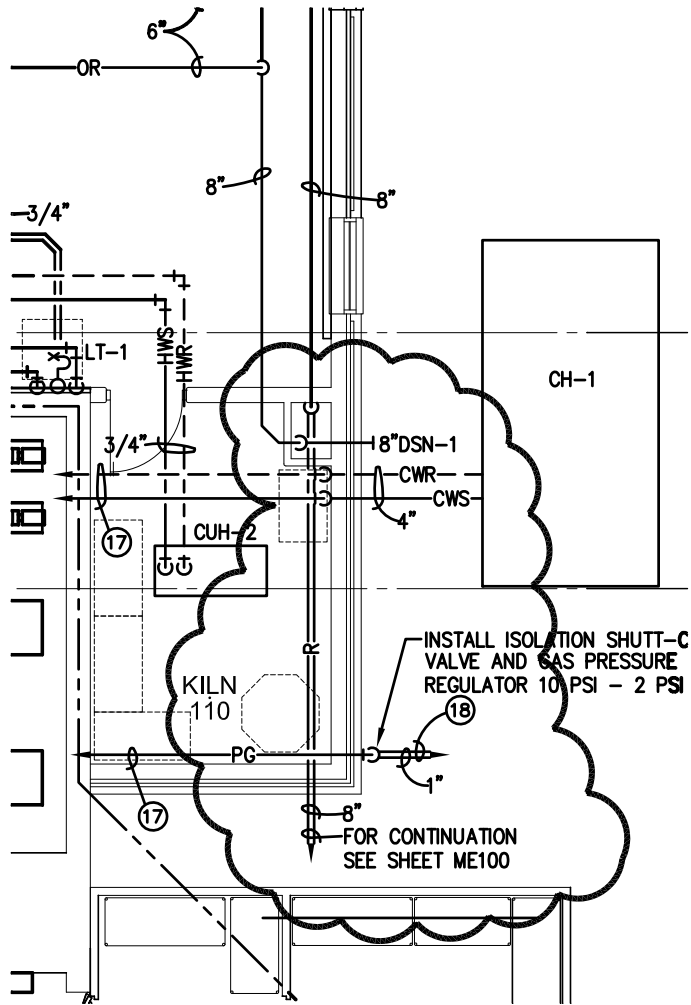


**Engineering Technologies Inc.**  
 Mechanical & Electrical Building Solutions  
 825 M Street, Suite 200 | Lincoln, NE 68508  
 P 402.476.1273 | F 402.476.1274  
 4559 South 133rd Street | Omaha, NE 68137  
 P 402.330.2772 | F 402.330.2630  
 ETI Project No: 2011-087

|                             |
|-----------------------------|
| 01/26/2012                  |
| SHEET<br><b>ME100</b>       |
| ATTACHMENT NO.<br><b>M1</b> |
| JCT                         |

SCALE: 1" = 20'-0"

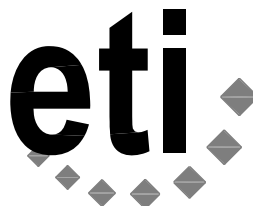
ADDENDUM #2



Hitchcock County  
 Schools-Trenton Building  
 Plumbing/Mech. Plan-Area "A"

SCALE: 1/8" = 1'-0"

ADDENDUM #2



**Engineering Technologies Inc.**  
 Mechanical & Electrical Building Solutions

825 M Street, Suite 200 | Lincoln, NE 68508  
 P 402.476.1273 | F 402.476.1274

4559 South 133rd Street | Omaha, NE 68137  
 P 402.330.2772 | F 402.330.2630

ETI Project No: 2011-087

01/26/2012

SHEET  
**M200**

ATTACHMENT NO.

**M2**

JCT

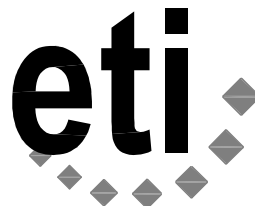
## LIGHTING CONTROLLER SCHEDULE

| DESCRIPTION  | MANUFACTURER             | MOUNTING | REMARKS   |
|--|--------------------------|----------|---|
| OS-1   | GREENGATE: DT-2000-120   | CEILING  | DUAL TECHNOLOGY LINE VOLTAGE CEILING MOUNTED SENSOR |
| OS-2   | GREENGATE: OMC-DT-2000-R | CEILING  | DUAL TECHNOLOGY LOW VOLTAGE CEILING MOUNTED SENSOR  |
| OS-3   | GREENGATE: US1500-120    | CEILING  | ULTRASONIC LINE VOLTAGE CEILING MOUNTED SENSOR      |
| OS-4   | GREENGATE: OSW-U-0721-MV | WALL     | ULTRASONIC LINE VOLTAGE WALL SWITCH SENSOR          |
| <b>NOTES:</b><br>1. ALL SENSORS SHALL BE FACTORY SET, UNLESS OTHERWISE DIRECTED BY OWNER.<br>2. PROVIDE ALL POWER PACKS AND LOW-VOLTAGE CABLING AS REQUIRED FOR A COMPLETE SYSTEM. |                          |          |   |

HITCHCOCK COUNTY SCHOOLS -  
 CULBERTSON  
 LIGHTING CONTROLLER SCHEDULE

SCALE: NONE

ADDENDUM #2



**Engineering Technologies Inc.**  
 Mechanical & Electrical Building Solutions

825 M Street, Suite 200 | Lincoln, NE 68508  
 P 402.476.1273 | F 402.476.1274

4559 South 133rd Street | Omaha, NE 68137  
 P 402.330.2772 | F 402.330.2630

ETI Project No: 2011-087

01/26/12

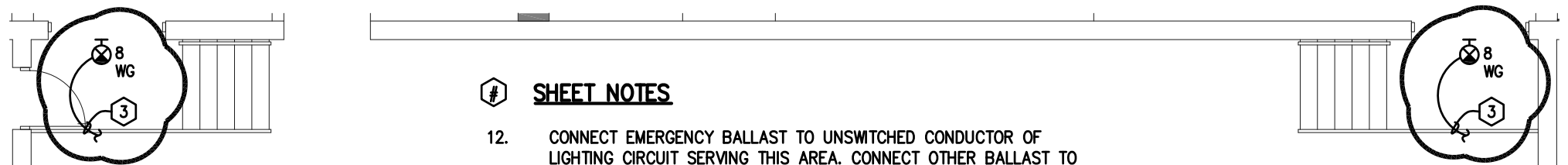
SHEET

E400

ATTACHMENT NO.

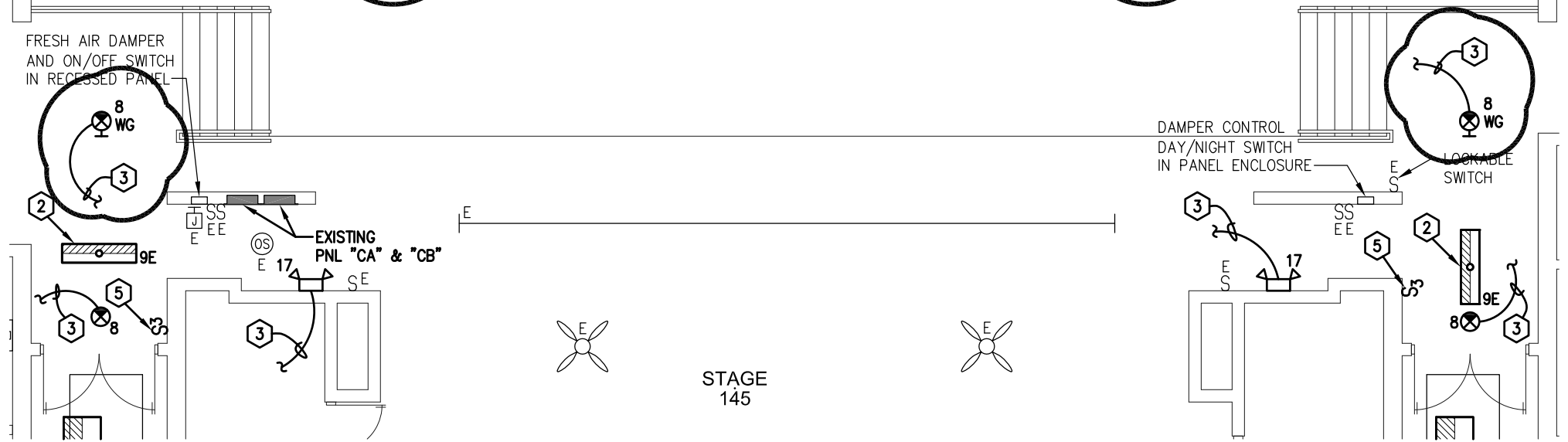
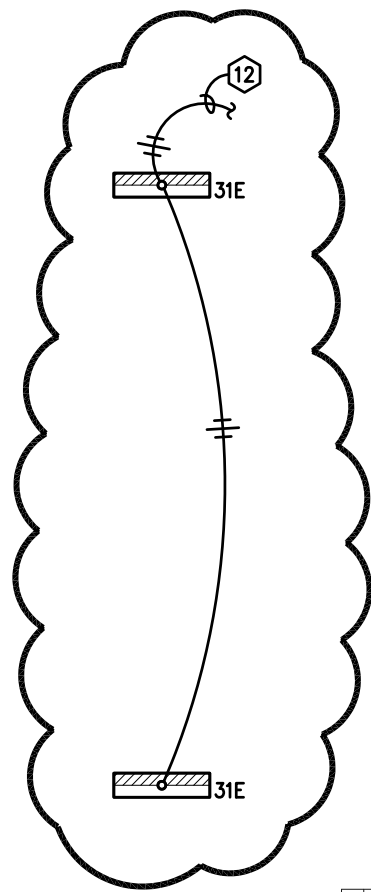
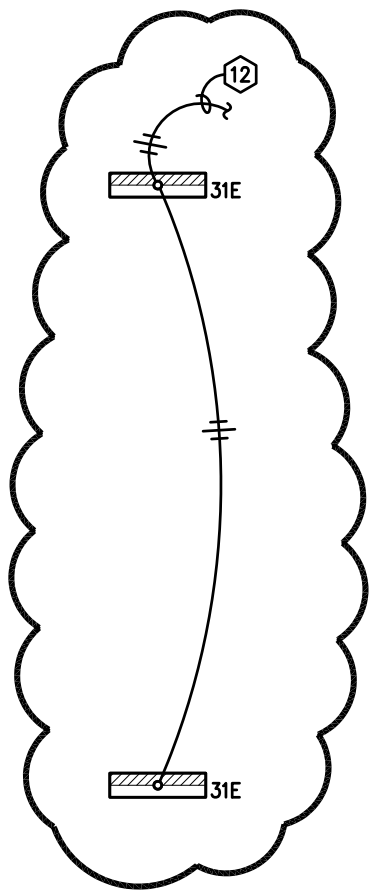
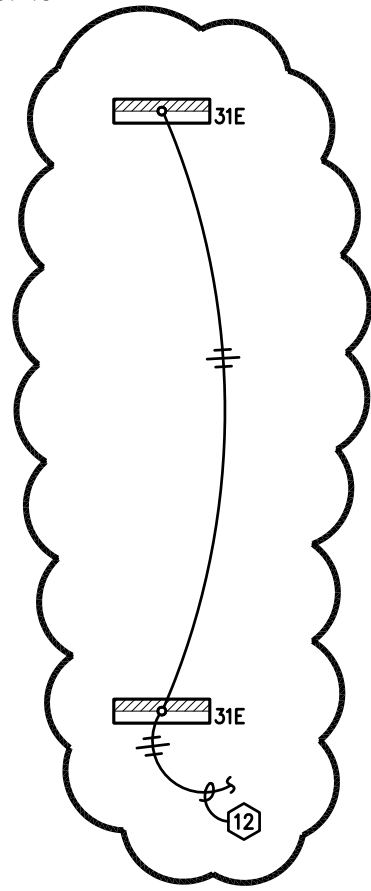
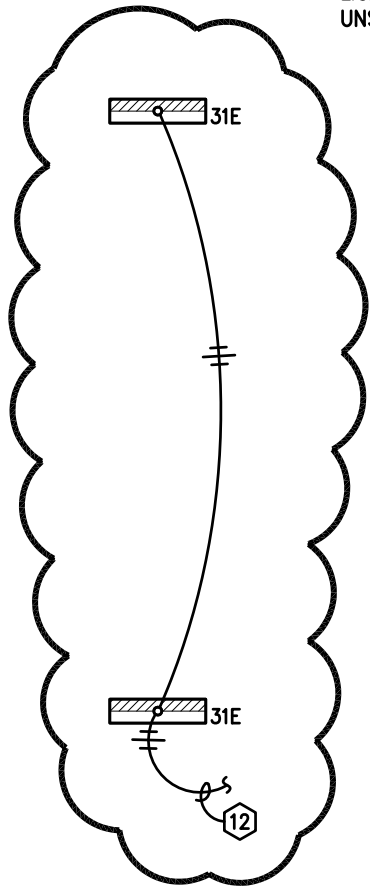
E1

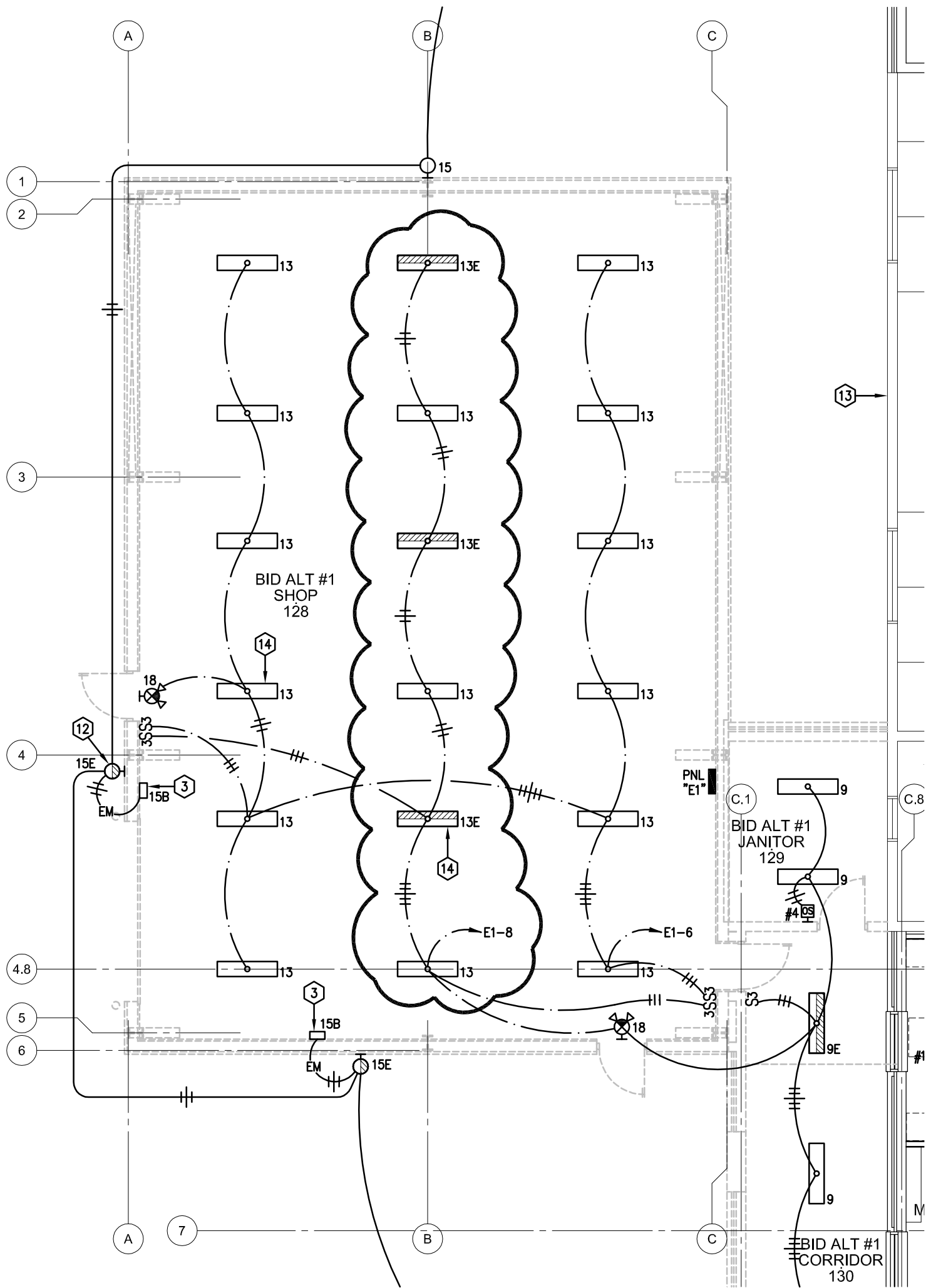
ADL



# **SHEET NOTES**

12. CONNECT EMERGENCY BALLAST TO UNSWITCHED CONDUCTOR OF LIGHTING CIRCUIT SERVING THIS AREA. CONNECT OTHER BALLAST TO UNSWITCHED CONDUCTOR.



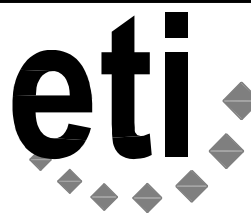


HITCHCOCK COUNTY SCHOOLS - TRENTON

PARTIAL LIGHTING PLAN - AREA "A"

SCALE: 1/8" = 1'-0"

ADDENDUM #2



**Engineering Technologies Inc.**  
Mechanical & Electrical Building Solutions

4559 South 133rd Street | Omaha, NE 68137  
P 402.330.2772 | F 402.330.2630  
825 M Street, Suite 200 | Lincoln, NE 68508  
P 402.476.1273 | F 402.476.1274  
ETI Project No: 2011-087

01/26/12

SHEET  
E200

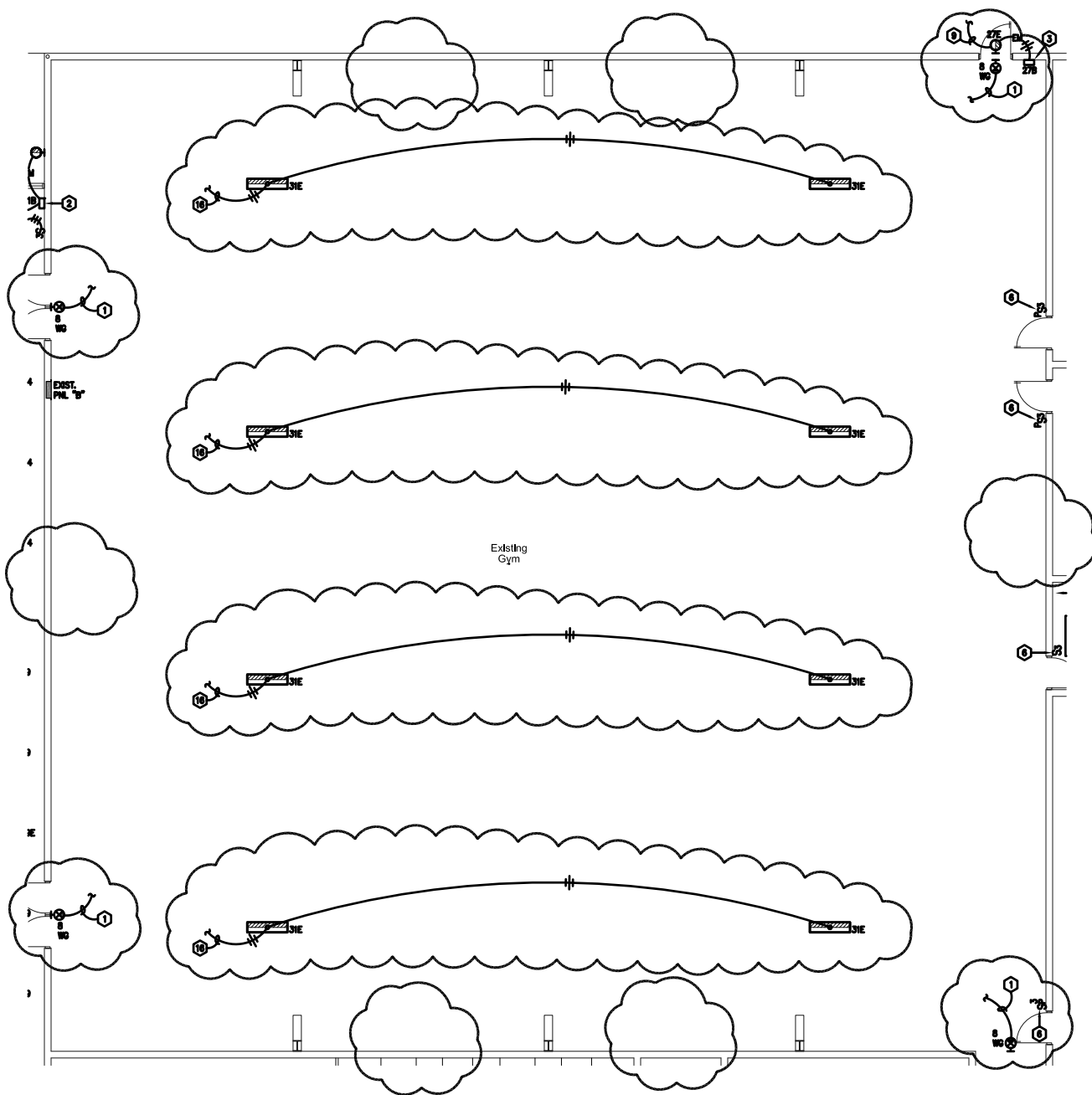
ATTACHMENT NO.

E3

ADL

# SHEET NOTES

- CONNECT EMERGENCY BALLAST TO UNSWITCHED CONDUCTOR OF LIGHTING CIRCUIT SERVING THIS AREA. CONNECT OTHER BALLAST TO SWITCHED CONDUCTOR.



HITCHCOCK COUNTY SCHOOLS - TRENTON

PARTIAL LIGHTING PLAN - AREA "A"

SCALE: 1/16" = 1'-0"

ADDENDUM #2



Engineering Technologies Inc.  
Mechanical & Electrical Building Solutions

4559 South 133rd Street | Omaha, NE 68137  
P 402.330.2772 | F 402.330.2630  
825 M Street, Suite 200 | Lincoln, NE 68508  
P 402.476.1273 | F 402.476.1274  
ETI Project No: 2011-087

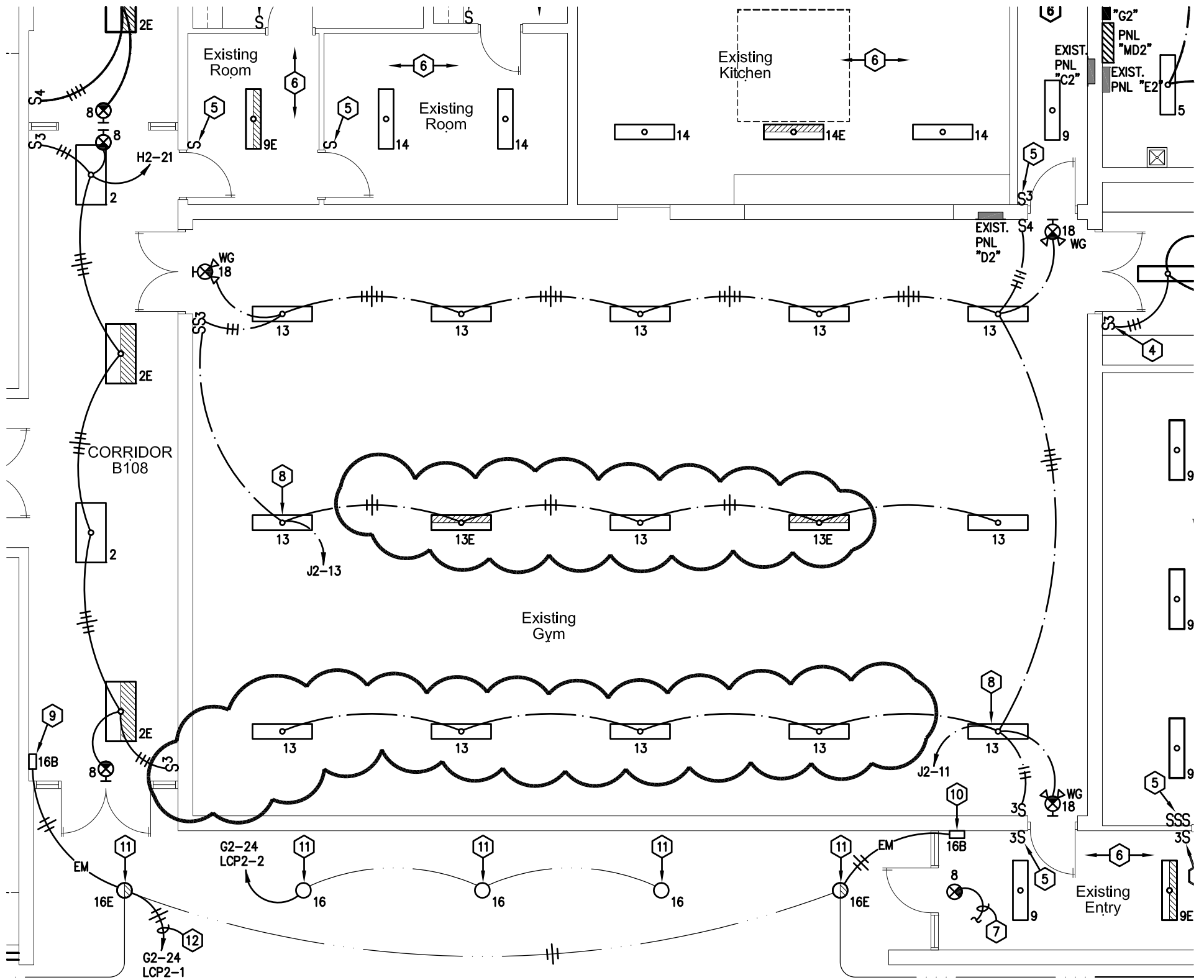
01/26/12

SHEET  
E200

ATTACHMENT NO.

E4

ADL



HITCHCOCK COUNTY SCHOOLS - TRENTON

PARTIAL LIGHTING PLAN - AREA "A"

SCALE: 1/8" = 1'-0"

ADDENDUM #2



**Engineering Technologies Inc.**  
Mechanical & Electrical Building Solutions

4559 South 133rd Street | Omaha, NE 68137  
P 402.330.2772 | F 402.330.2630  
825 M Street, Suite 200 | Lincoln, NE 68508  
P 402.476.1273 | F 402.476.1274  
ETI Project No: 2011-087

01/26/12

SHEET  
**E201**

ATTACHMENT NO.

**E5**

ADL