

**Addenda No. 2**

**Project: 8<sup>th</sup> Street Lofts**  
**For: Blue Stone Development**

Date: 23 January 2012  
From: Studio 951, Ltd.  
To: All plan holders.

All information and instructions given herein shall become part of the Contract Documents.

**Drawings** – Please make the following changes:

**A2.02, A2.03 and A2.04** – Please find revised sheets attached showing window type F at one end of the common corridor.

**A2.09** – Please find a modification for the bi-fold doors to be louvered bi-fold doors.

**A3.02** – Please find a modification to the windows in light of the changes on A2.02, A2.03 and A2.04.

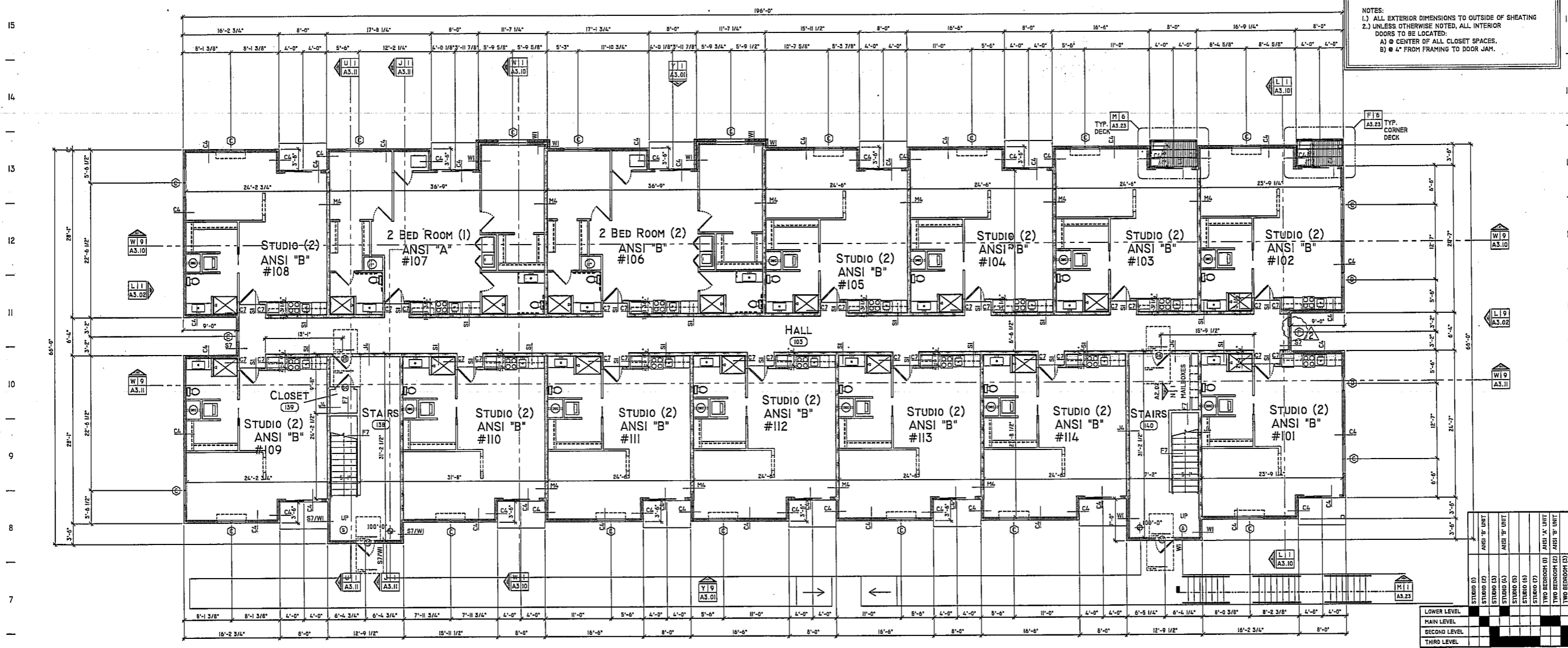
**M2.01** – Please find a revised sheet showing revised schedules and dryer vent ductwork for the unit plans.

**M2.02** – Please find a new sheet showing specific unit mechanical plans.

**P1.02** – Please find a new sheet showing specific unit plumbing plans.

**E2.01 and E2.02** – Please find revised sheets showing the addition of an exhaust fan at one end of the common corridor.

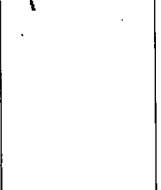
**END of Addendum No. 2**



NOTES:  
 1.) ALL EXTERIOR DIMENSIONS TO OUTSIDE OF SHEATHING  
 2.) UNLESS OTHERWISE NOTED, ALL INTERIOR DOORS TO BE LOCATED:  
 A) @ CENTER OF ALL CLOSET SPACES.  
 B) @ 4" FROM FRAMING TO DOOR JAM.



studio951 Ltd.  
 THIS DRAWING AND ASSOCIATED SPECIFICATIONS IS COPYRIGHT AS DATED AND SHALL REMAIN IN THE PROPERTY OF THE ARCHITECT. NO PART OF THESE DOCUMENTS SHALL BE REPRODUCED IN ANY FORM OR BY ANY MEANS WITHOUT WRITTEN PERMISSION FROM THE ARCHITECT.



MARK	UNIT	LEVEL
W 9	ANSI 'B' UNIT	MAIN LEVEL
L 11	ANSI 'B' UNIT	MAIN LEVEL
L 19	ANSI 'B' UNIT	MAIN LEVEL
W 9	ANSI 'B' UNIT	SECOND LEVEL
L 11	ANSI 'B' UNIT	SECOND LEVEL
L 19	ANSI 'B' UNIT	SECOND LEVEL
W 9	ANSI 'B' UNIT	THIRD LEVEL
L 11	ANSI 'B' UNIT	THIRD LEVEL
L 19	ANSI 'B' UNIT	THIRD LEVEL

ACCESSIBILITY NOTES:  
 1 - THE MAIN LEVEL IS THE ONLY ACCESSIBLE LEVEL  
 2 - STUDIO (4) IS ACCESSIBLE

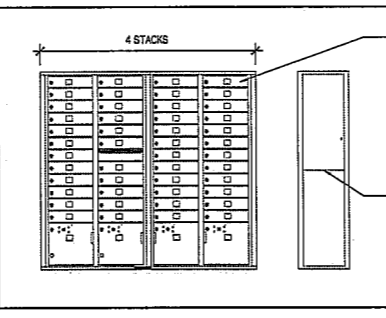
N  
 X 6 MAIN LEVEL PLAN  
 1/8" = 1'-0"

8TH STREET LOFTS  
 NEW MULTI-FAMILY  
 8TH & PACIFIC STREET  
 OMAHA, NEBRASKA  
 MAIN LEVEL PLAN

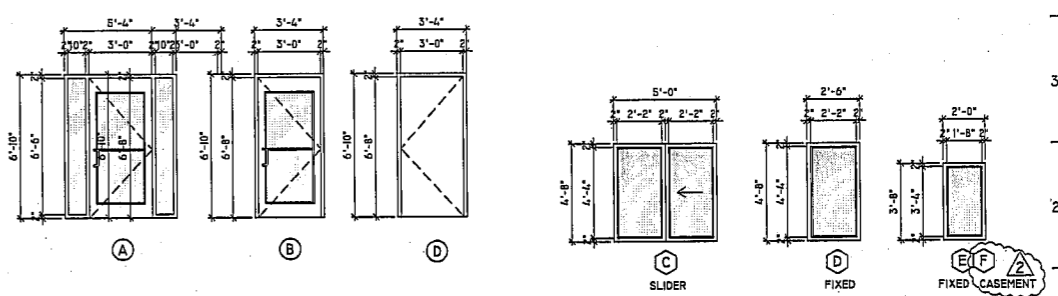
MARK	DOOR		FRAME		HARDWARE										REMARKS			
	WIDTH	HEIGHT	THICKNESS	MATERIAL	FINISH	TYPE	LOCK	CLOSER	KICK PLATE	PULL	PUSH	EXIT DEVICE	FLOOR STOP	DOOR STOP		THRESHOLD	FINISH	FIRE RATING
2	3'-0"	6'-8"	1 3/4"	AL	PF	A	AL	PF	3	ENTRANCE								
3	3'-0"	6'-8"	1 3/4"	AL	PF	B	AL	PF	3	ENTRANCE								
4	3'-0"	6'-8"	1 3/4"	MASS	PT	D	HM	PT	3	STORAGE								
5	3'-0"	6'-8"	1 3/4"	MASS	PT	D	HM	PT	3	PASSAGE								
6	3'-0"	6'-8"	1 3/4"	MASS	PT	D	HM	PT	3	PASSAGE								

MARK	MAKE	FRAME		GLASS TYPE	REMARKS
		WIDTH	HEIGHT		
C		5'-0"	4'-8"	VINYL PF DOUBLE PANE LOW-E SLIDER	
D		2'-6"	4'-8"	VINYL PF DOUBLE PANE LOW-E FIXED	
E		2'-6"	3'-8"	VINYL PF DOUBLE PANE LOW-E FIXED	
F		2'-6"	3'-9"	VINYL PF DOUBLE PANE LOW-E CASEMENT	

NO	ROOM DESIGNATION	FLOOR	BASE	WALLS				CEILING		REMARKS
				NORTH	SOUTH	EAST	WEST	MATERIAL	HEIGHT	
101	STAIRS	CARPET	VINYL	G.W.B.-PT	G.W.B.-PT	G.W.B.-PT	G.W.B.-PT	G.W.B.	9'-0" A.F.F.	
103	HALL	CARPET	VINYL	G.W.B.-PT	G.W.B.-PT	G.W.B.-PT	G.W.B.-PT	G.W.B.	9'-8" A.F.F.	
104	STAIRS	CARPET	VINYL	G.W.B.-PT	G.W.B.-PT	G.W.B.-PT	G.W.B.-PT	G.W.B.	9'-0" A.F.F.	
105	CLOSET	CARPET	VINYL	G.W.B.-PT	G.W.B.-PT	G.W.B.-PT	G.W.B.-PT	G.W.B.	9'-0" A.F.F.	
109	HALL	CARPET	VINYL	G.W.B.-PT	G.W.B.-PT	G.W.B.-PT	G.W.B.-PT	G.W.B.	9'-8" A.F.F.	



PREFINISHED LOCKING METAL MAILBOX STATION. VERIFY LOCATION AND CONFIGURATION WITH U.S.P.S.  
 PROVIDE: 47 MAILBOXES 1 OUTGOING 4 PARCEL  
 RECESSED TRASH BIN



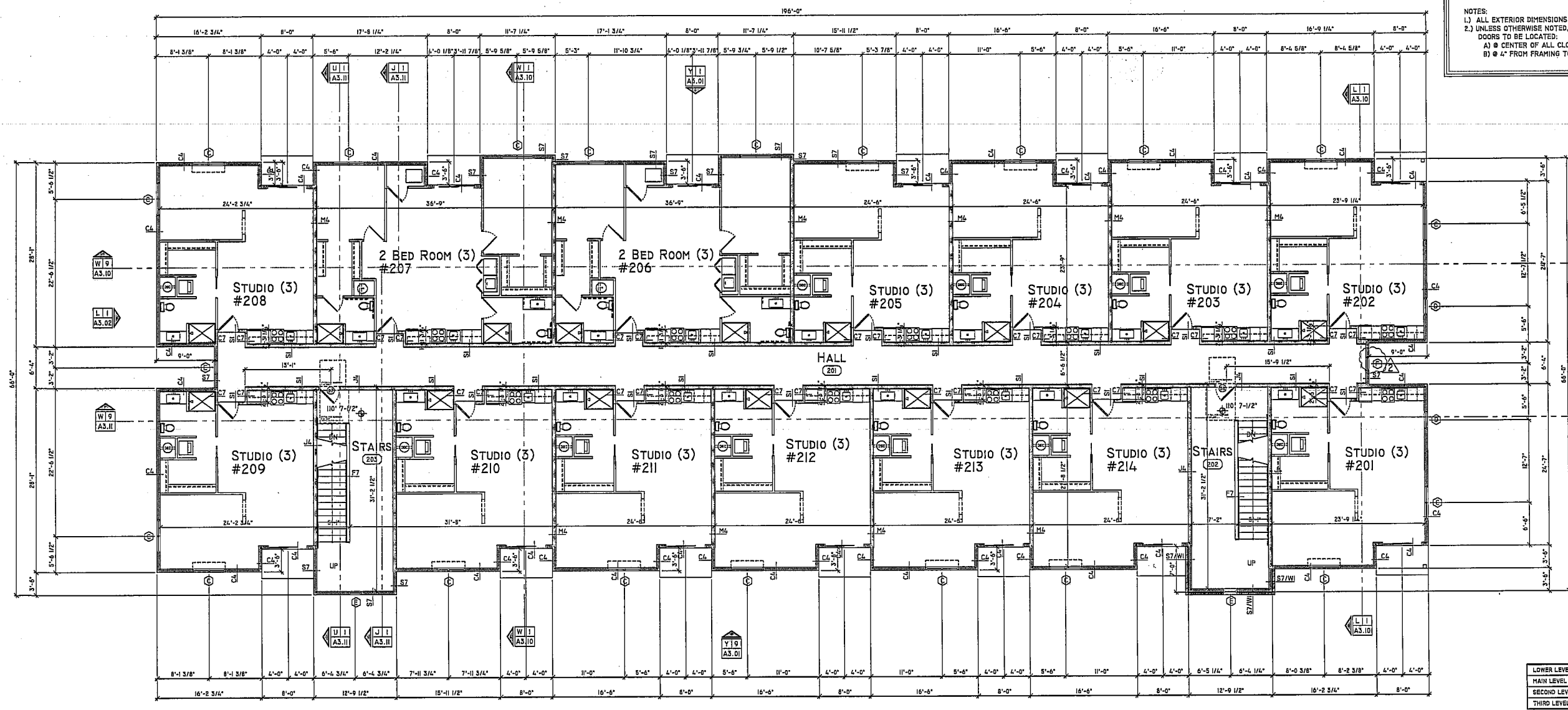
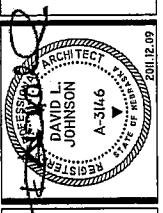
NO.	ISSUED FOR	DATE
01	PRELIMS	2010.09.28
02	PRELIMS	2010.09.28
03	REVISIONS	2010.10.12
04	REVISIONS	2010.10.12
05	REVISIONS	2010.10.12
06	REVISIONS	2010.10.12
07	REVISIONS	2010.10.12
08	REVISIONS	2010.10.12
09	REVISIONS	2010.10.12
10	REVISIONS	2010.10.12
11	REVISIONS	2010.10.12
12	REVISIONS	2010.10.12
13	REVISIONS	2010.10.12
14	REVISIONS	2010.10.12
15	REVISIONS	2010.10.12
16	REVISIONS	2010.10.12
17	REVISIONS	2010.10.12
18	REVISIONS	2010.10.12
19	REVISIONS	2010.10.12
20	REVISIONS	2010.10.12

Y	OVERALL BUILDING SCHEDULES	N	MAILBOXES	J	DOOR TYPES	D	WINDOW TYPES
No SCALE	MAIN FLOOR	1/2" = 1'-0"		1/4" = 1'-0"	EXTERIOR & COMMON AREAS ONLY	1/4" = 1'-0"	

NOTES:  
 1.) ALL EXTERIOR DIMENSIONS TO OUTSIDE OF SHEATHING  
 2.) UNLESS OTHERWISE NOTED, ALL INTERIOR DOORS TO BE LOCATED:  
 A) @ CENTER OF ALL CLOSET SPACES.  
 B) @ 4" FROM FRAMING TO DOOR JAMB.



studio951 Ltd.  
 THIS DRAWING AND ASSOCIATED SPECIFICATIONS IS COPYRIGHT AS DATED AND SHALL REMAIN ON THE PROPERTY OF THE ARCHITECT. NO PART OF THESE DOCUMENTS SHALL BE REPRODUCED IN ANY FORM OR BY ANY MEANS WITHOUT WRITTEN PERMISSION FROM THE ARCHITECT.



STUDIO (3)	ANSI 'W' UNIT
STUDIO (3)	ANSI 'W' UNIT
STUDIO (3)	ANSI 'W' UNIT
STUDIO (3)	ANSI 'W' UNIT
STUDIO (3)	ANSI 'W' UNIT
TWO BEDROOM (2)	ANSI 'W' UNIT
TWO BEDROOM (2)	ANSI 'W' UNIT

ACCESSIBILITY NOTES:  
 1 - THE MAIN LEVEL IS THE ONLY ACCESSIBLE LEVEL  
 2 - STUDIO (A) IS ACCESSIBLE

X 6 SECOND FLOOR PLAN  
 1/8" = 1'-0"

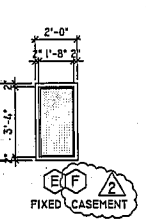
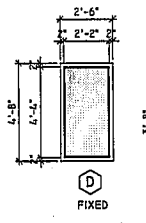
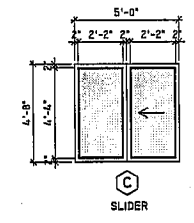
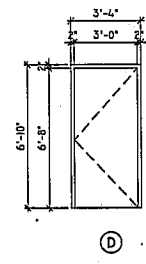
8TH STREET LOFTS  
 NEW MULTI-FAMILY  
 8TH & PACIFIC STREET  
 OMAHA, NEBRASKA  
 2ND LEVEL PLAN

NO.	ISSUED FOR	DATE
01	PRELIMS	2019.07.24
02	PRELIMS	2019.08.08
03	REVISIONS	2019.08.12
04	REVISIONS	2019.08.19
05	REVISIONS	2019.08.19
06	REVISIONS	2019.08.19
07	REVISIONS	2019.08.24
08	PRELIM. BID SET	2019.08.13
09	REVISIONS	2019.08.28
10	PROGRESS SET	2019.08.28
11	REVISIONS	2019.08.28
12	PROGRESS SET	2019.08.13
13	REVIEW	2019.08.21
14	PERMIT SET	2019.08.28
15	ADDENDUM 01	2019.08.21
16	ADDENDUM 02	2019.08.21

MARK	DOOR		FRAME		HARDWARE		REMARKS
	WIDTH	HEIGHT	MATERIAL	FINISH	LOCK	CLOSER	
1	3'-0"	6'-8"	3/4" MASS	PT D	HM	PT 3	PASSAGE
2	3'-0"	6'-8"	3/4" MASS	PT D	HM	PT 3	PASSAGE

No	ROOM DESIGNATION	FLOOR	BASE	WALLS				CEILING		REMARKS
				NORTH	SOUTH	EAST	WEST	MATERIAL	HEIGHT	
201	HALL	CARPET	VINYL	G.W.B.-PT	G.W.B.-PT	G.W.B.-PT	G.W.B.-PT	G.W.B.	9'-0" A.F.F.	
202	STAIRS	CARPET	VINYL	G.W.B.-PT	G.W.B.-PT	G.W.B.-PT	G.W.B.-PT	G.W.B.	9'-0" A.F.F.	
203	STAIRS	CARPET	VINYL	G.W.B.-PT	G.W.B.-PT	G.W.B.-PT	G.W.B.-PT	G.W.B.	9'-0" A.F.F.	

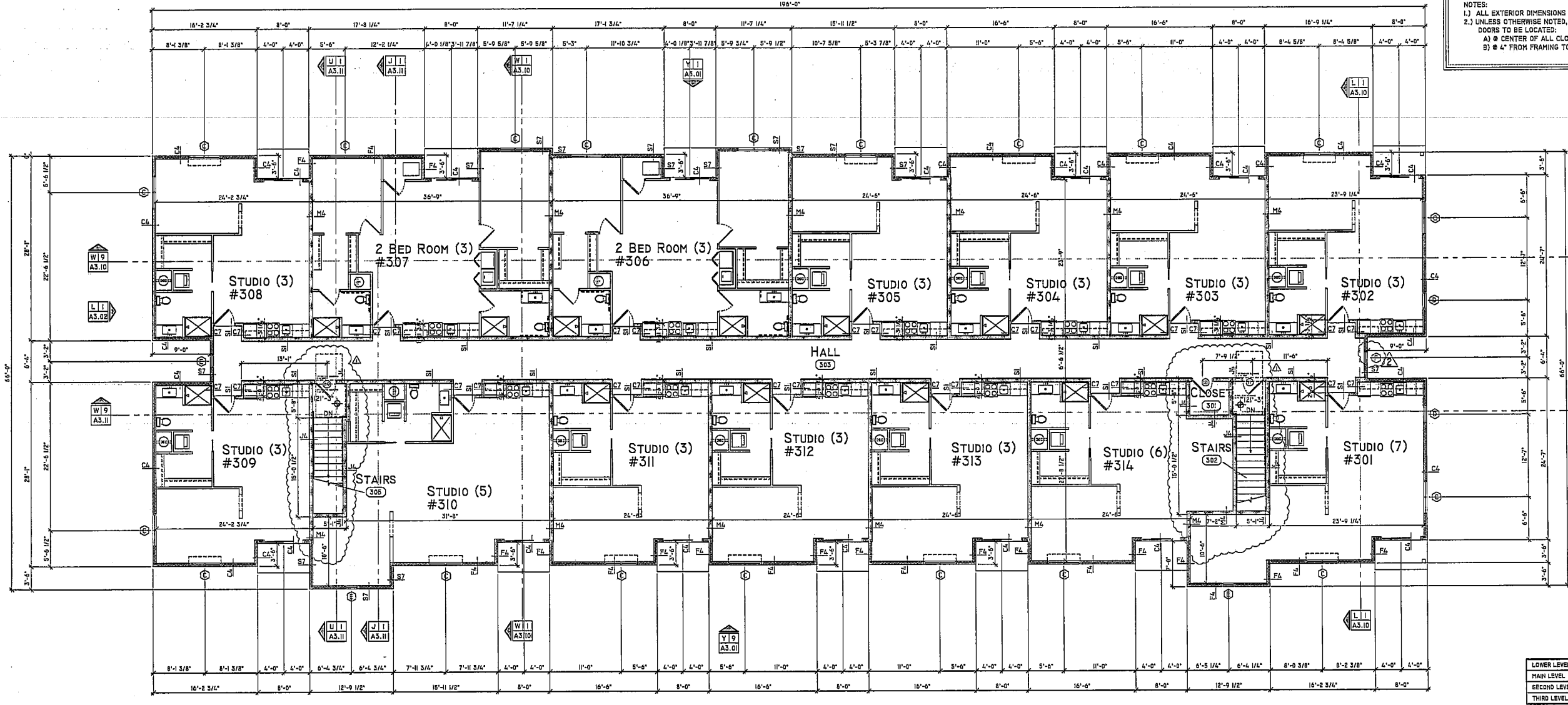
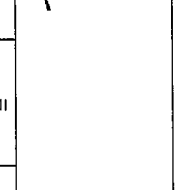
MARK	MAKE	FRAME		GLASS TYPE	REMARKS
		WIDTH	HEIGHT		
C		5'-0"	4'-8"	VINYL	PP DOUBLE PANE; LOW-E SLIDER
D		2'-0"	4'-8"	VINYL	PP DOUBLE PANE; LOW-E FIXED
E		2'-0"	3'-8"	VINYL	PP DOUBLE PANE; LOW-E FIXED
F		2'-0"	3'-8"	VINYL	PP DOUBLE PANE; LOW-E FIXED



NOTES:  
 1.) ALL EXTERIOR DIMENSIONS TO OUTSIDE OF SHEATHING  
 2.) UNLESS OTHERWISE NOTED, ALL INTERIOR DOORS TO BE LOCATED:  
 A) @ CENTER OF ALL CLOSET SPACES.  
 B) @ 4" FROM FRAMING TO DOOR JAMB.



studio 951 Ltd.  
 THIS DRAWING AND ASSOCIATED SPECIFICATIONS IS COPYRIGHT AS DATED AND SHALL REMAIN IN THE PROPERTY OF THE ARCHITECT. NO PART OF THESE DOCUMENTS SHALL BE REPRODUCED IN ANY FORM OR BY ANY MEANS WITHOUT WRITTEN PERMISSION FROM THE ARCHITECT.



LEVEL	STUDIO (1)	STUDIO (2)	STUDIO (3)	STUDIO (4)	STUDIO (5)	STUDIO (6)	STUDIO (7)	TWO BEDROOM (1)	TWO BEDROOM (2)	TWO BEDROOM (3)
LOWER LEVEL										
MAIN LEVEL										
SECOND LEVEL										
THIRD LEVEL										

ACCESSIBILITY NOTES:  
 1 - THE MAIN LEVEL IS THE ONLY ACCESSIBLE LEVEL  
 2 - STUDIO (4) IS ACCESSIBLE

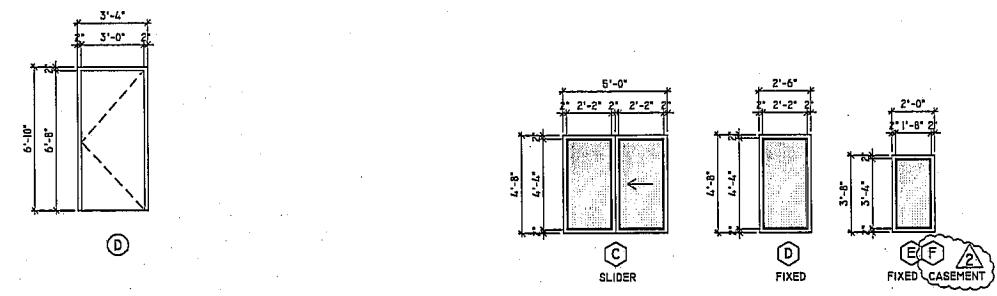
X | 6 THIRD LEVEL PLAN  
 1/8" = 1'-0"

8TH STREET LOFTS  
 NEW MULTI-FAMILY  
 8TH & PACIFIC STREET  
 OMAHA, NEBRASKA  
 THIRD LEVEL PLAN

MARK	DOOR		FRAME		HARDWARE							REMARKS				
	WIDTH	HEIGHT	THICKNESS	MATERIAL	FINISH	LOCK	CLOSER	KICK PLATE	PULL	PUSH	EXIT DEVICE		FLOOR STOP	THRESHOLD	FINISH	FIRE RATING
9	3'-0"	6'-8 1/2"	3/4"	MASS PT	D	HM	PT	3	PASSAGE	.	.	.	.	BRICK	60	MAG HOLD OPEN
10	3'-0"	6'-8 1/2"	3/4"	MASS PT	D	HR	PT	3	STORAGE	.	.	.	.	BRICK	20	
11	3'-0"	6'-8 1/2"	3/4"	MASS PT	D	HR	PT	3	PASSAGE	.	.	.	.	BRICK	60	MAG HOLD OPEN

NO	ROOM DESIGNATION	FLOOR	BASE	WALLS				CEILING		REMARKS
				NORTH	SOUTH	EAST	WEST	MATERIAL	HEIGHT	
301	CLOSET	CARPET	VINYL	G.W.B.-PT	G.W.B.-PT	G.W.B.-PT	G.W.B.-PT	G.W.B.-PT	9'-0" A.F.F.	
302	STAIRS	CARPET	VINYL	G.W.B.-PT	G.W.B.-PT	G.W.B.-PT	G.W.B.-PT	G.W.B.-PT	9'-0" A.F.F.	
305	HALL	CARPET	VINYL	G.W.B.-PT	G.W.B.-PT	G.W.B.-PT	G.W.B.-PT	G.W.B.-PT	9'-0" A.F.F.	
305	STAIRS	CARPET	VINYL	G.W.B.-PT	G.W.B.-PT	G.W.B.-PT	G.W.B.-PT	G.W.B.-PT	9'-0" A.F.F.	

MARK	MAKE	FRAME		GLASS TYPE	REMARKS
		WIDTH	HEIGHT		
C		5'-0"	4'-8"	VINYL	PF DOUBLE PANE LOW-E SLIDER
D		2'-0"	4'-8"	VINYL	PF DOUBLE PANE LOW-E FIXED
E		2'-0"	3'-8"	VINYL	PF DOUBLE PANE LOW-E FIXED
F		2'-0"	3'-8"	VINYL	PF DOUBLE PANE LOW-E FIXED



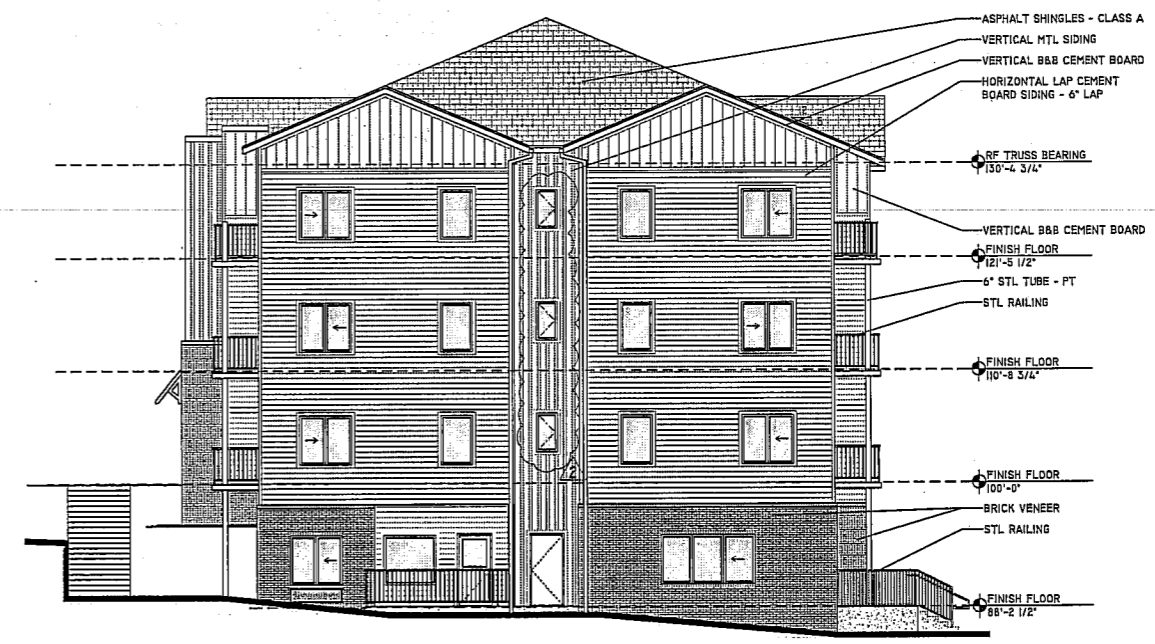
Y   1	OVERALL BUILDING SCHEDULES	J   1	DOOR TYPES	E   1	WINDOW TYPES
No SCALE	MAIN FLOOR	1/4" = 1'-0"	EXTERIOR & COMMON AREAS ONLY	1/4" = 1'-0"	

NO.	ISSUED FOR	DATE
01	PRELIMS	2016.09.30
02	PRELIMS	2016.09.30
03	REVISIONS	2016.10.10
04	REVISIONS	2016.10.19
05	REVISIONS	2016.10.19
06	REVISIONS	2016.10.19
07	REVISIONS	2016.10.19
08	PRELIM. S.D. SET	2016.10.19
09	REVISIONS	2016.10.27
10	PRELIM. SET	2016.10.28
11	REVISIONS	2016.10.28
12	PROGRESS SET	2016.11.01
13	REVIEW	2016.11.01
14	PERMIT SET	2016.11.01
15	ADDENDA G.	2016.11.01
16	ADDENDA H.	2016.11.01

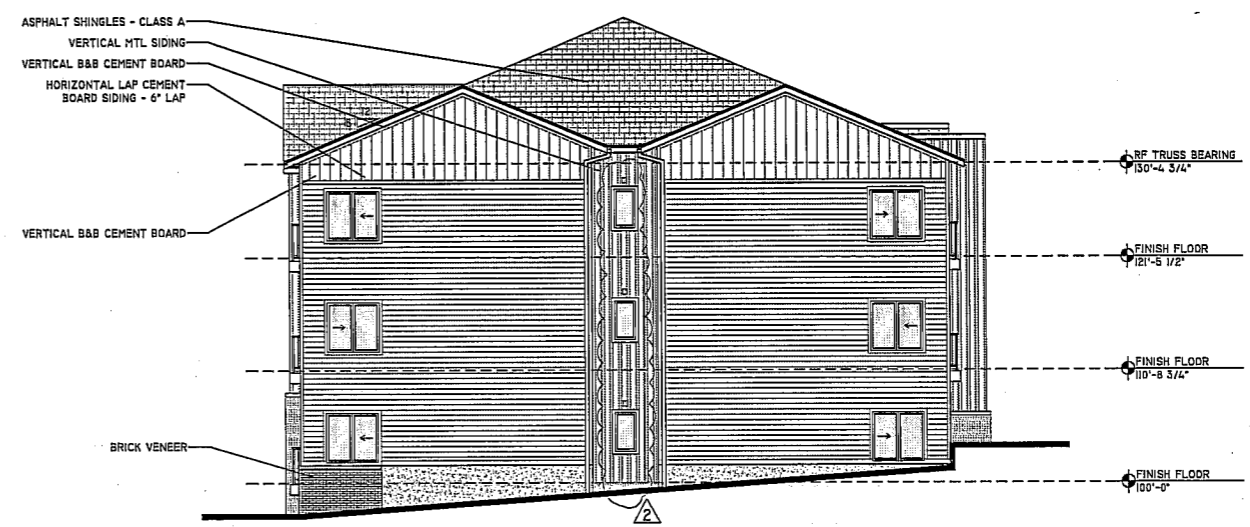


Y | X | W | V | U | T | S | R | P | N | M | L | K | J | H | G | F | E | D | C | B | A

15  
14  
13  
12  
11  
10  
9  
8  
7  
6  
5  
4  
3  
2  
1



L 9 EAST ELEVATION  
1/8" = 1'-0"

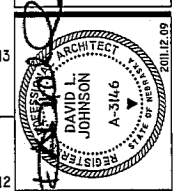


L 1 WEST ELEVATION  
1/8" = 1'-0"

Y | X | W | V | U | T | S | R | P | N | M



studio951 Ltd.  
THIS DRAWING AND ASSOCIATED SPECIFICATIONS IS COPYRIGHT AS DATED AND SHALL REMAIN IN THE PROPERTY OF THE ARCHITECT. NO PART OF THESE DOCUMENTS SHALL BE REPRODUCED IN ANY FORM OR BY ANY MEANS WITHOUT WRITTEN PERMISSION FROM THE ARCHITECT.

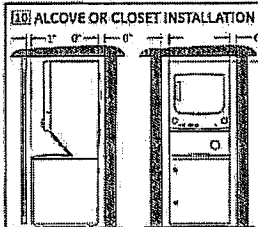
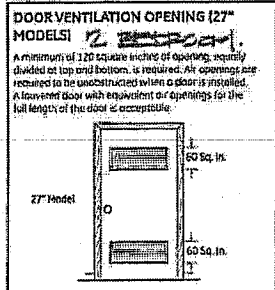


8TH STREET LOFTS  
NEW MULTI-FAMILY  
8TH & PACIFIC STREET  
OMAHA, NEBRASKA  
EXTERIOR ELEVATIONS

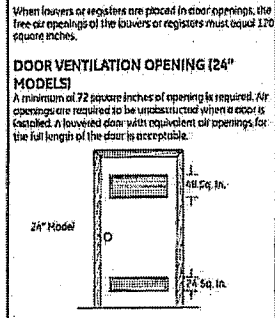
NO.	ISSUED FOR	DATE
01	PRELIMS	2010.09.29
02	PRELIMS	2010.09.29
03	REVISIONS	2010.09.29
04	REVISIONS	2010.09.29
05	REVISIONS	2010.09.29
06	REVISIONS	2010.09.29
07	REVISIONS	2010.09.29
08	PRELIM BID SET	2010.09.29
09	REVISIONS	2010.09.29
10	PACING SET	2010.09.29
11	REVISIONS	2010.09.29
12	PROGRESS SET	2010.09.29
13	REVIEW	2010.09.29
14	PERMIT SET	2010.09.29
15	ADDENDA 01	2010.09.29
16	ADDENDA 02	2010.09.29

**Installation Instructions**

**MOBILE OR MANUFACTURED HOME**  
**INSTALLATION**  
 • Installation MUST conform to the MANUFACTURED HOME CONSTRUCTION & SAFETY STANDARD, TITLE 24, PART 32-80 or, when such standard is not applicable, with AMERICAN NATIONAL STANDARD FOR MOBILE HOMES, ANSI/NFPA NO. 501A.  
 • The appliance MUST be vented to the outdoors with the termination securely fastened to the mobile home structure.  
 • The vent MUST NOT be terminated between a mobile or manufactured home.  
 • The vent duct material MUST BE METAL.  
 • Do not use sheet metal screws or other fastening devices which pierce into the interior of the exhaust vent.  
 • See section 2 for electrical connection information.



• If your appliance is approved for installation in an alcove or closet, it will be stated on a label on the appliance back.  
 • TO PREVENT LARGE AMOUNTS OF LINT AND MOISTURE FROM ACCUMULATING AND TO MAINTAIN DRYING EFFICIENCY, THIS MACHINE MUST BE EXHAUSTED OUTDOORS.  
 • Do not install this appliance with less than the minimum clearances shown above.  
 CONSIDERATION MUST BE GIVEN TO PROVIDE ADEQUATE CLEARANCES FOR INSTALLATION AND SERVICE.



When louvers or registers are placed in door openings, the free air openings of the louvers or registers must equal 120 square inches.

**BATHROOM OR BEDROOM INSTALLATION**  
 • The appliance MUST be vented to the outdoors. See EXHAUST INFORMATION section 3 & 4.  
 • The installation must conform with local codes or, in the absence of local codes, with the NATIONAL ELECTRICAL CODE, ANSI/NFPA NO. 70.

**Dave Johnson**  
 From: geconsumerrelations@ge.com  
 Sent: Wednesday, January 18, 2012 11:34 AM  
 To: Dave Johnson  
 Subject: GE Consumer Relations Case# 12262591

Re: Case# 12262591, Model: UNK, Serial No:UNK  
 The CFM ratings are approximate values taken from Laboratory testing and should NOT be used for installation purposes. For appropriate venting information, see the individual installation instructions.

**Dryer Style Typical Model**  
 Numbers CFM w/NO Restriction  
 NO VENT cap or duct attached Maximum allowable vent length installed w/4" wall cap & rigid metal ducting CFM @ the max. vent condition specified

Harmony DP6750 175 CFM @ elbows = 150ft 120 CFM Long Vent Model 7.0 cuft OLSR483 175 CFM @ elbows = 150ft 130 CFM 7.0 cuft D508613, D45R485, D55R453, DMC2440, DMCD450, DCCD330, DCR330 170 CFM @ elbows = 90ft 100 CFM 6.0 cuft D6XR463, D1XR433 170 CFM @ elbows = 90ft 100 CFM  
 5.0 cuft DVL8223, DML8333, DVL8333 170 CFM @ elbows = 90ft 100 CFM  
 5.7 cuft DVL223, DVL333, DSKM43, DPKM45, DCCM43 170 CFM @ elbows = 60ft 100 CFM  
 27" Unifized WSM2700, WSM2700 170 CFM @ elbows = 56ft 100 CFM 24" Unifized WSM2420, WSM2480 85 CFM @ elbows = 43ft 70 CFM 120V Compact DSK5333, DSKF333 90 CFM @ elbows = 46ft 70 CFM 240V Compact DSK5433 90 CFM @ elbows = 46ft 70 CFM

Sincerely,  
 GE Consumer Relations

THRU-WALL AIR HANDLING UNIT								
TAG	CFM	AUX HEAT KW	NOMINAL COOLING BTUH	REFRIG	MINIMUM EER	MANUFACTURER / MODEL	VOLTS / PHASE	NOTES
MAGIC-PAK	810	5	23,000	R-410A	9.0	MAGIC-PAK MHP40924	230 / 1	1, 2, 3, 4, 5
PTAC-1	315	5	14,000	R-410A	9.5	FRIEDRICH PDH1SK	230 / 1	1, 2, 5, 6

NOTES:  
 1 PROVIDE WITH SLEEVE FOR THRU-WALL MOUNTING  
 2 PROVIDE WITH REMOTE 24/7 PROGRAMMABLE THERMOSTAT (TO BE LOCATED BY OWNER)  
 3 PROVIDE WITH EXTERIOR LOUVERS SELECTED BY OWNER  
 4 CFM NOTED IS AT HIGH BLOWER SPEED WITH 0.5 IN. W.C. EXTERNAL STATIC PRESSURE  
 5 PROVIDE WITH INTERNAL WASHABLE FILTER  
 6 COORDINATE UNIT INSTALLATION WITH EXTERIOR ARCHITECTURAL GRILLES PROVIDED BY OTHERS

EXHAUST FANS									
TAG	AREA SERVED	CFM	ESP	HP	MAX SONES	ELECTRICAL	MANUFACTURER / MODEL	CONTROL	NOTES
EF-1	RESTROOM	70	0.5	FRACTIONAL	3.5	120 / 1 / 60	BROAN 162	MANUAL WALL SWITCH	1, 2, 3
EF-2	HALL 103, HALL 201, HALL 303	70	0.5	FRACTIONAL	3.5	120 / 1 / 60	BROAN 160	BREAKER	1, 2, 4

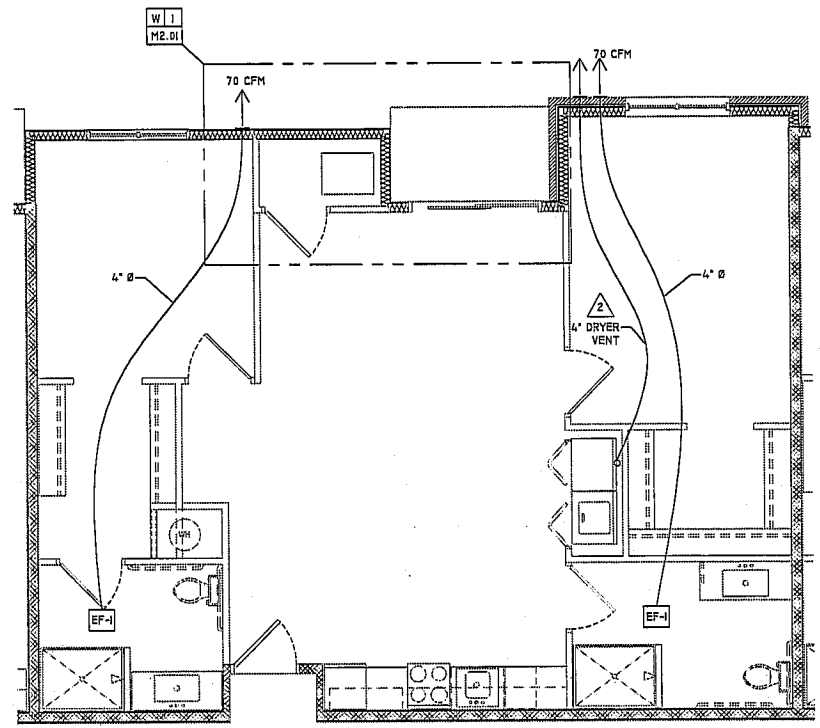
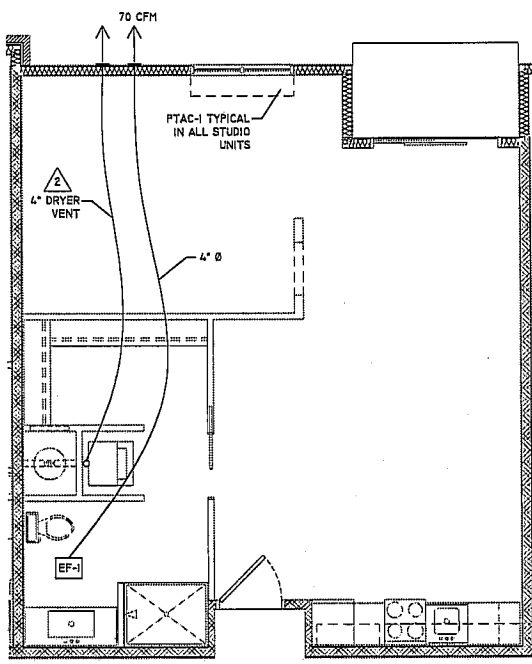
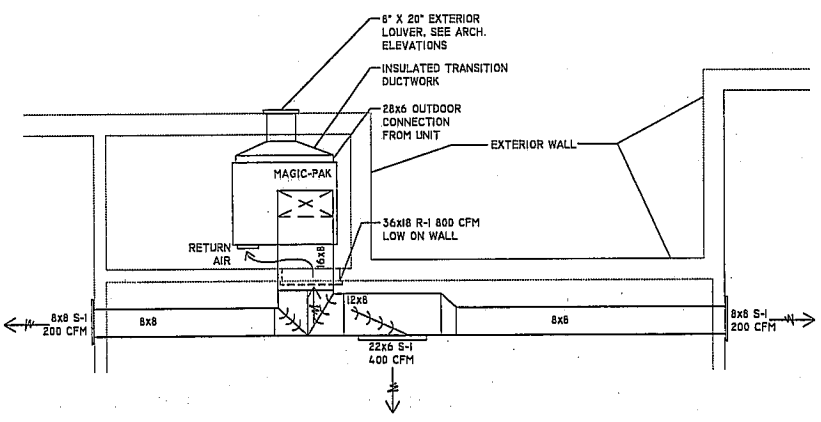
NOTES:  
 1 PROVIDE WITH 6" HOODED WALL CAP AND BUILT-IN BIRD SCREEN  
 2 PROVIDE RADIATION DAMPER TO MAINTAIN FIRE RATING AT CEILING, INTERLOCK WITH FIRE ALARM FOR SHUT DOWN  
 3 BROAN 162 EXHAUST FAN W/ INFRARED BULD HEATER, SWITCH INFRARED WITH TIMER SWITCH ON WALL  
 4 SEE E2.01 AND E2.02 FOR THE LOCATION OF EF-2 AND ASSOCIATED WORK

DIFFUSERS - GRILLES - REGISTERS										
TAG	AREA SERVED	COLOR / FINISH	DAMPER	PATTERN	SERVICE	THROW	MAX NC	MAX PRESSURE DROP	MANUFACTURER / MODEL	NOTES
S-1	WALL	WHITE PAINTABLE	OPD	DOUBLE DEFLECTION	SUPPLY	15'	20	0.1 IN WG	TITUS 272FS	1, 2, 3, 4
R-1	WALL	WHITE PAINTABLE		DOUBLE DEFLECTION	RETURN		20	0.1 IN WG	TITUS 23RL	1, 2, 3, 4

NOTES:  
 1 COORDINATE WIDTH AND LENGTH TO ACHIEVE NC RATING AND CFM NOTED ON PLANS  
 2 VERIFY BORDER TYPE REQUIRED FOR WALL INSTALLATION

Y 8 DOCUMENT FROM APPLIANCE MANUFACTURER S 8 DOCUMENT FROM APPLIANCE MANUFACTURER  
 No SCALE MANUFACTURERS WRITTEN INSTALLATION INSTRUCTIONS FOR SPECIFIED APPLIANCES No SCALE EMAIL RECEIVED FROM MANUFACTURER STATING CFM VALUES FOR SPECIFIED APPLIANCES

NOTE: DRYERS INSTALLED BEHIND DOORS WILL BE PROVIDED WITH FULL LOUVER DOORS (TYPICAL). DRYERS INSTALLED OPEN TO BATHROOMS WILL NOT BE PROVIDED WITH DOORS. NOTE: VALUES SHOWN ARE BELOW THE REQUIREMENT FOR ADDITIONAL MAKE-UP AIR.

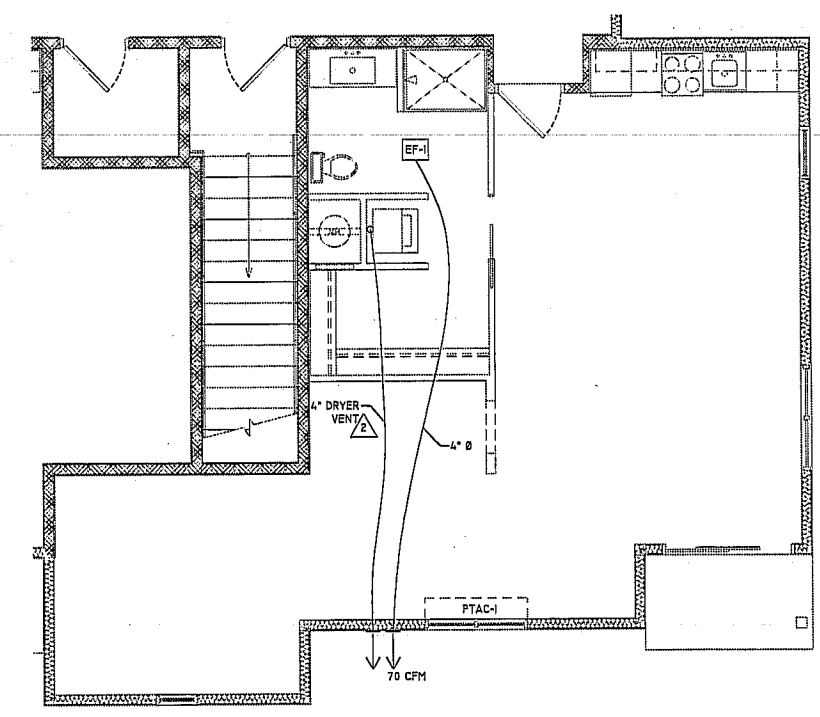


W 1 PARTIAL MECHANICAL PLAN	N 1 STUDIO MECHANICAL PLAN	G 1 2 BEDROOM MECHANICAL PLAN
1/2" = 1'-0" @ 2 BEDROOM UNIT	1/4" = 1'-0"	1/4" = 1'-0"

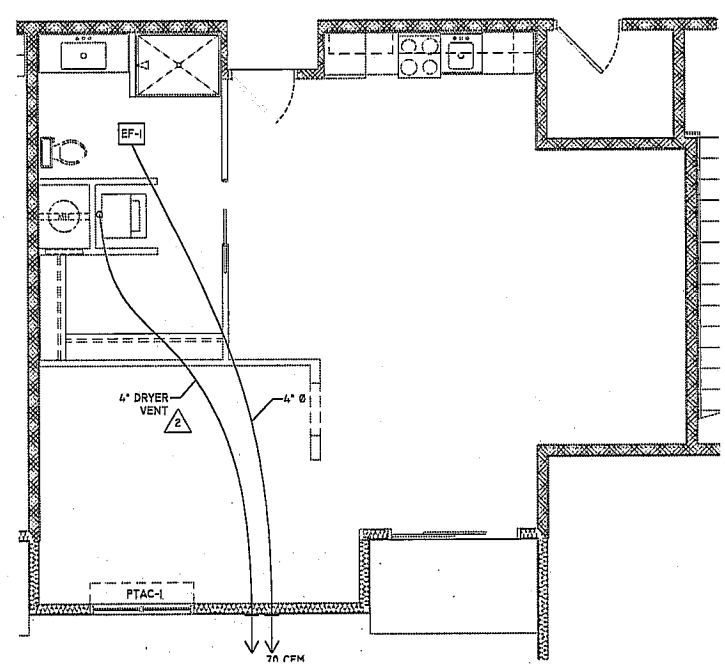
**Building Synergy Partners**  
 PROJECT: 8th Street Lofts  
 Project Title: 8th and Pacific streets, Omaha Nebraska  
 Page Description: MECHANICAL PLANS AND SCHEDULES  
 Date Issued: 9 DEC 2011  
 Date Revised: 23 JAN 2012  
 M2.01

Y | X | W | V | U | T | S | R | P | N | M | L | K | J | H | G | F | E | D | C | B | A

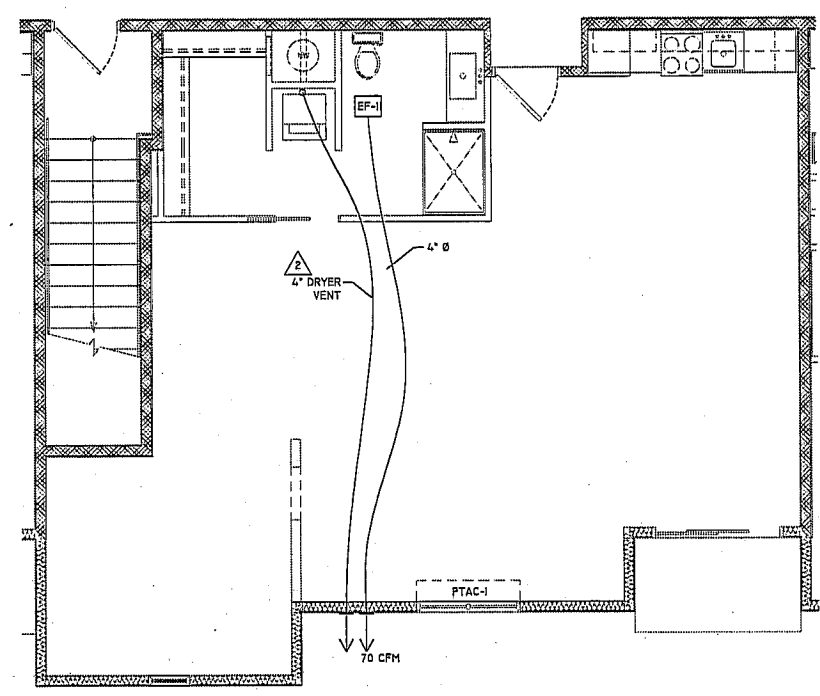
15  
14  
13  
12  
11  
10  
9  
8  
7  
6  
5  
4  
3  
2  
1



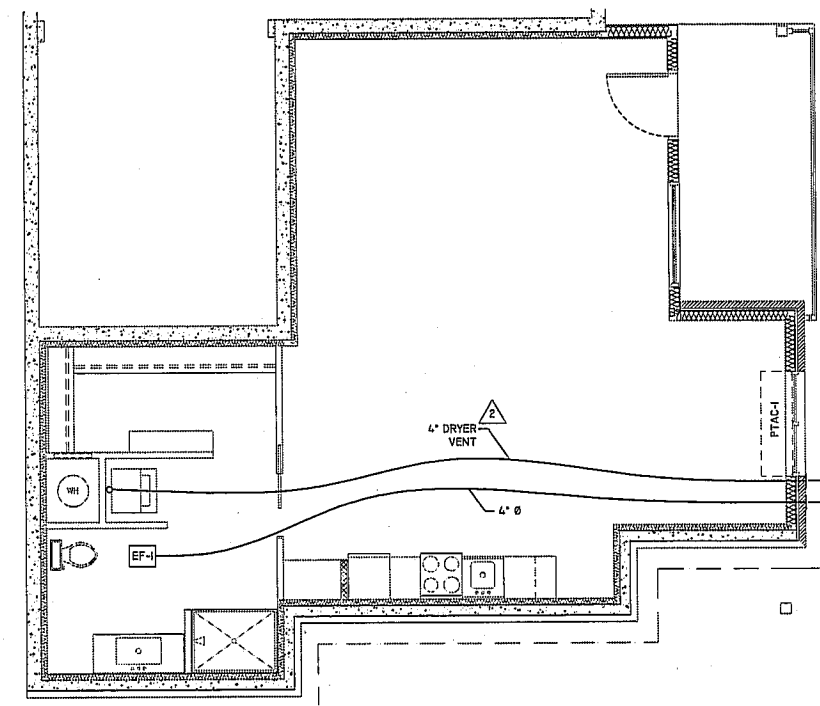
G   9	MECHANICAL PLAN
1/4" = 1'-0"	STUDIO (7) UNIT



X   I	MECHANICAL PLAN
1/4" = 1'-0"	STUDIO (6) UNIT



P   I	MECHANICAL PLAN
1/4" = 1'-0"	STUDIO (5) UNIT



G   I	MECHANICAL PLAN
1/4" = 1'-0"	STUDIO (4) UNIT

**building Synergy partners**  
 PROFESSIONAL ENGINEERS  
 2011.12.09  
 REGISTERED PROFESSIONAL ENGINEER  
 CHARLES L. DOANE III  
 E-8936  
 STATE OF NEBRASKA  
 Charles L. Doane III

Project Title: 8th Street Lofts  
 8th and Pacific Streets, Omaha Nebraska  
 Page Description: MECHANICAL PLANS

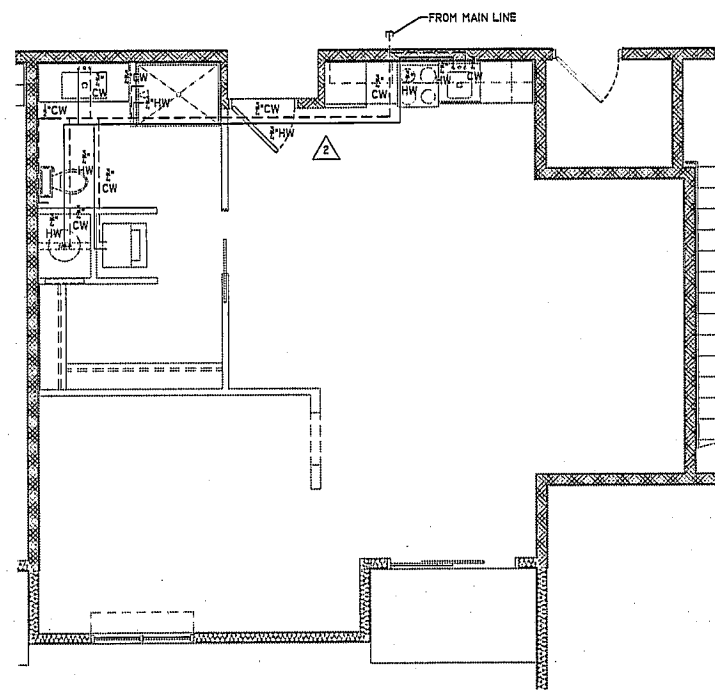
Date Issued: 9 DEC 2011  
 Date Revised: 23 JAN 2012

**M2.02**  
 NEW SHEET  
 ADDED TO SET

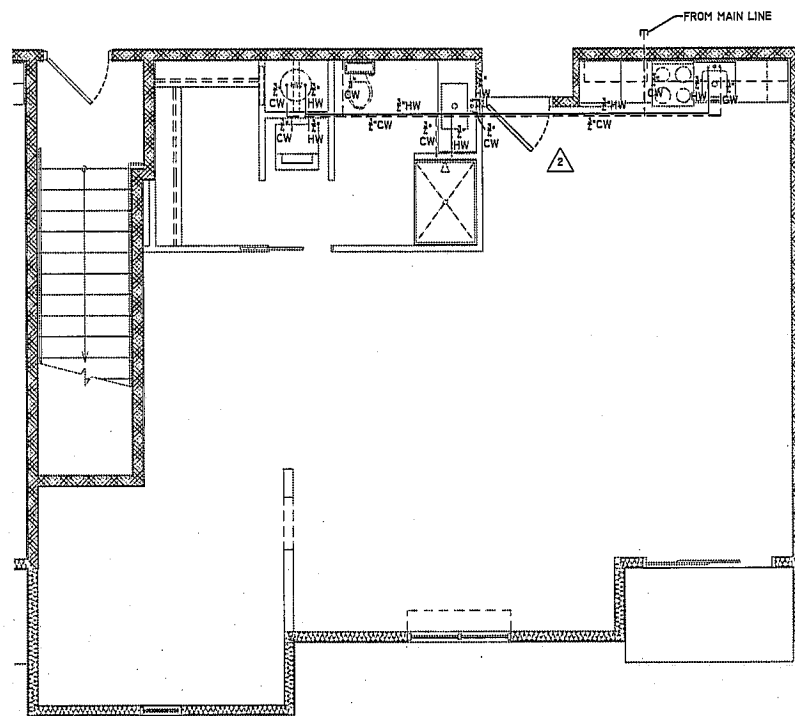
Y | X | W | V | U | T | S | R | P | N | M | L | K | J | H | G | F | E | D | C | B | A

Y | X | W | V | U | T | S | R | P | N | M | L | K | J | H | G | F | E | D | C | B | A

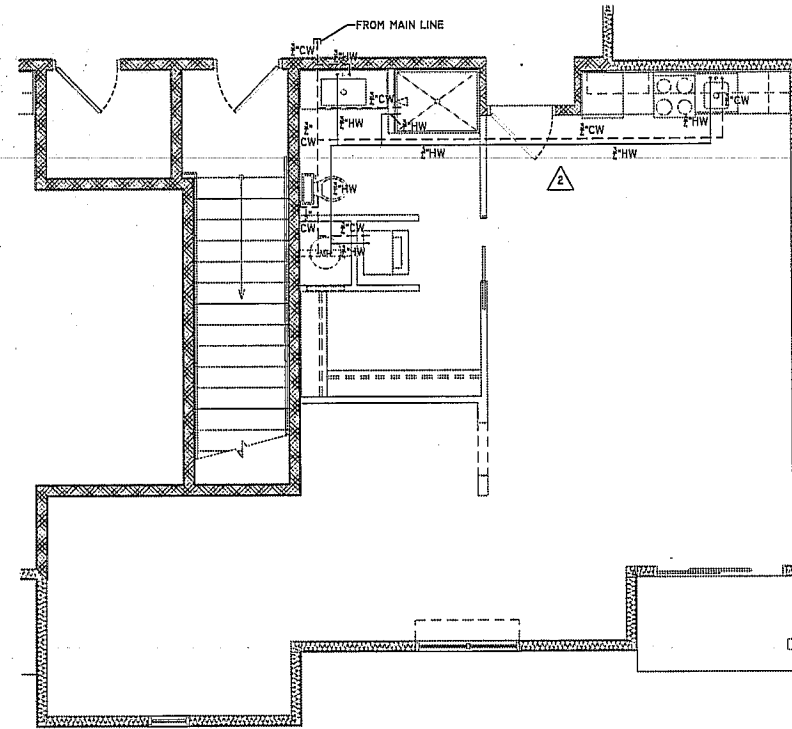
15  
14  
13  
12  
11  
10  
9  
8  
7  
6  
5  
4  
3  
2  
1



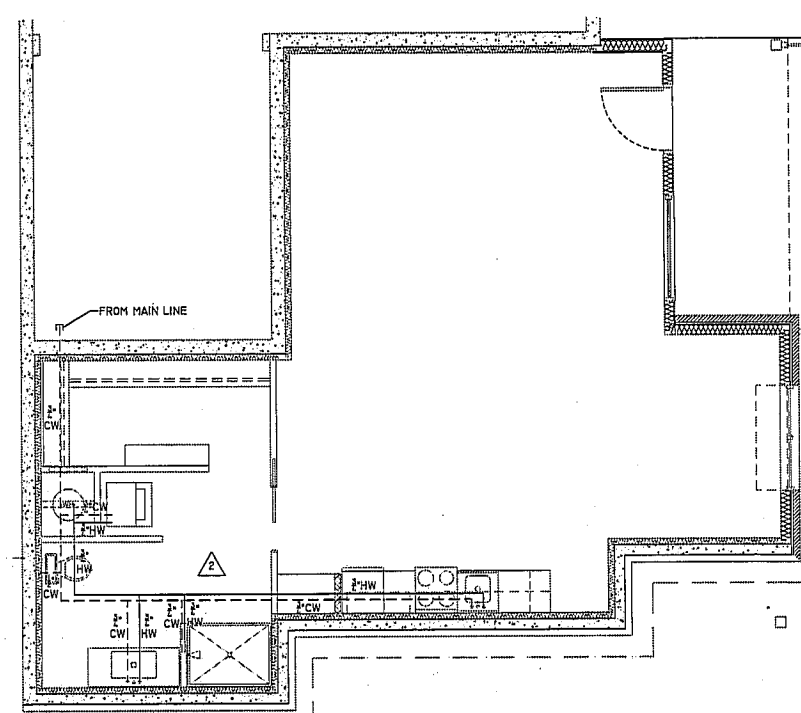
X   I	WATER PIPING PLAN
1/4" = 1'-0"	STUDIO (6) UNIT



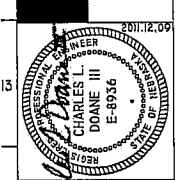
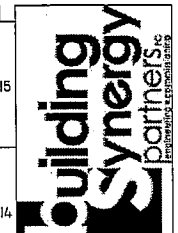
P   I	WATER PIPING PLAN
1/4" = 1'-0"	STUDIO (5) UNIT



G   9	WATER PIPING PLAN
1/4" = 1'-0"	STUDIO (7) UNIT



G   I	WATER PIPING PLAN
1/4" = 1'-0"	STUDIO (4) UNIT

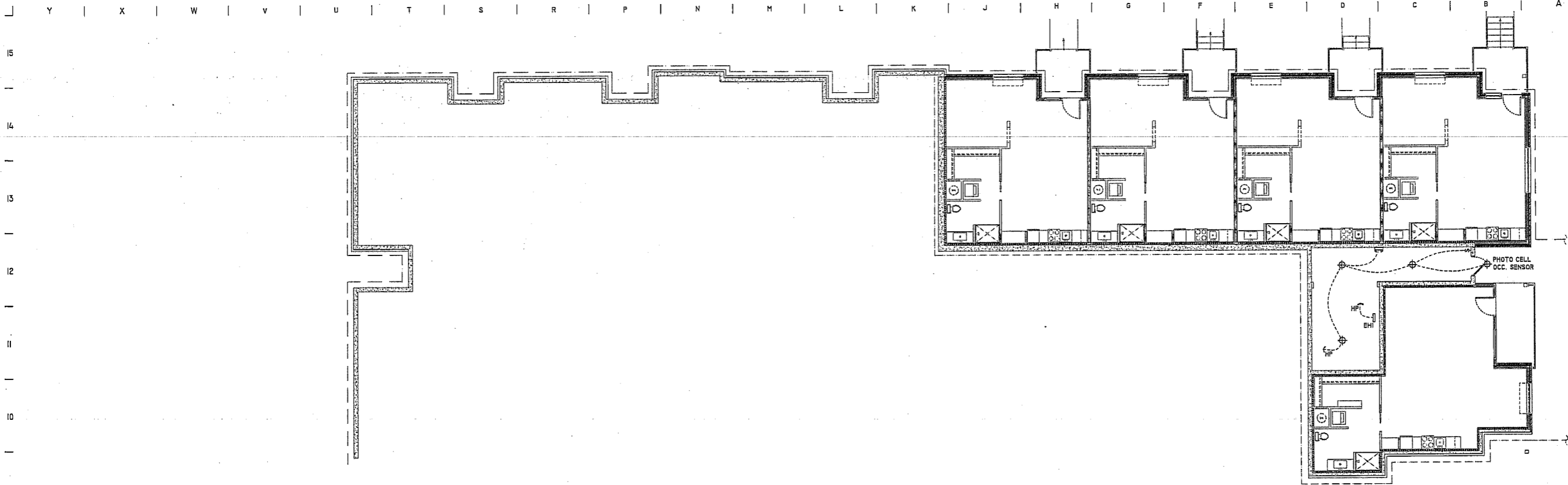


Charles L. Doane III  
 PROJECT TITLE: 8th Street Lofts  
 8th and Pacific streets, Omaha Nebraska  
 PROJECT DESCRIPTION: WATER PIPING UNIT PLANS

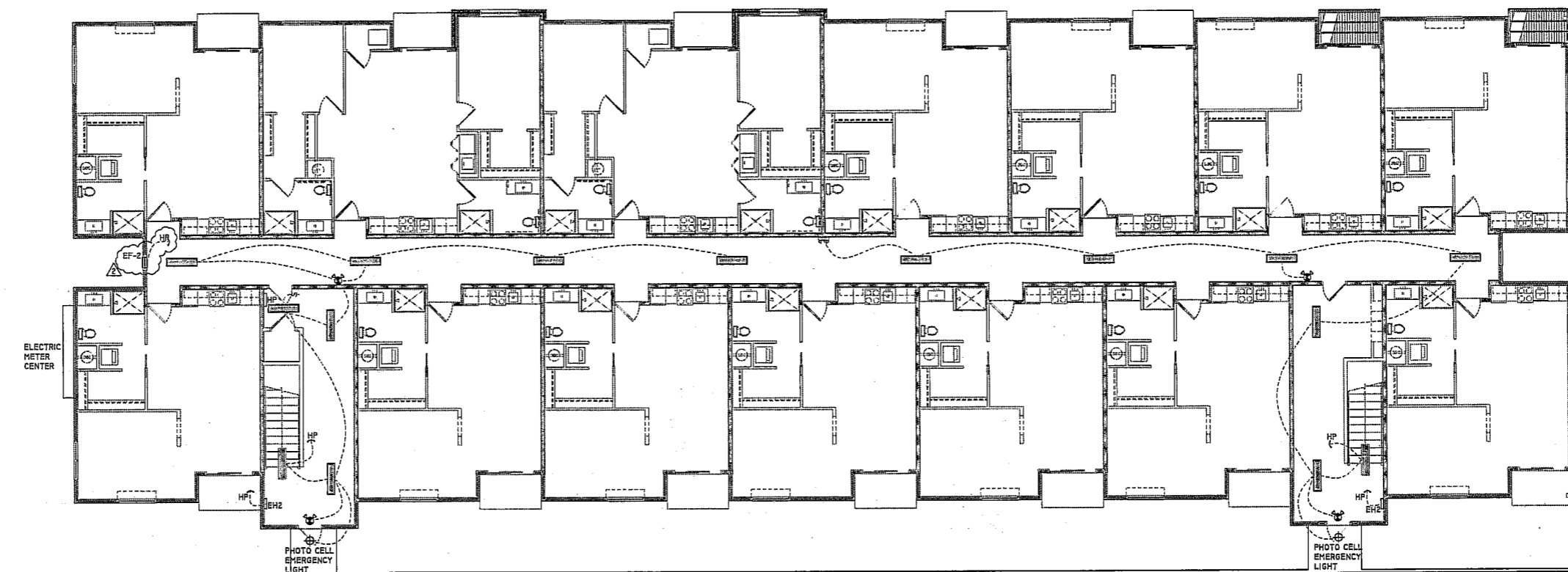
Date Issued: 9 DEC 2011  
 Date Revised: 23 JAN 2012

P1.02  
 NEW SHEET  
 ADDED TO SET

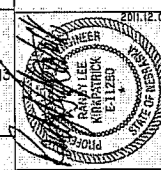
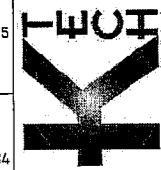
Y | X | W | V | U | T | S | R | P | N | M | L | K | J | H | G | F | E | D | C | B | A



U 8 LOWER LEVEL ELECTRICAL PLAN  
1/8" = 1'-0"



U 1 MAIN LEVEL ELECTRICAL PLAN  
1/8" = 1'-0"



Project Title:  
8th Street Lofts  
8th and Pacific streets, Omaha Nebraska

Page Description:  
LOWER AND MAIN LEVEL ELECTRICAL PLANS

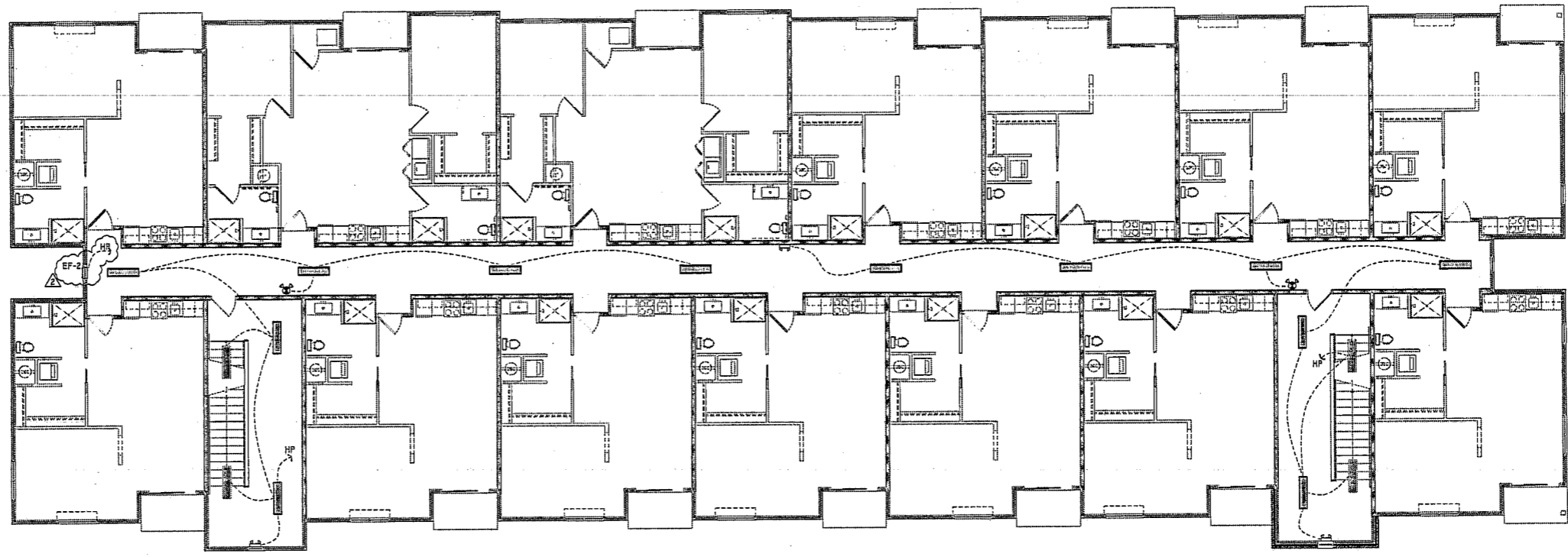
Date Issued: 9 DEC 2011  
Date Revised: 23 JAN 2011

E2.01

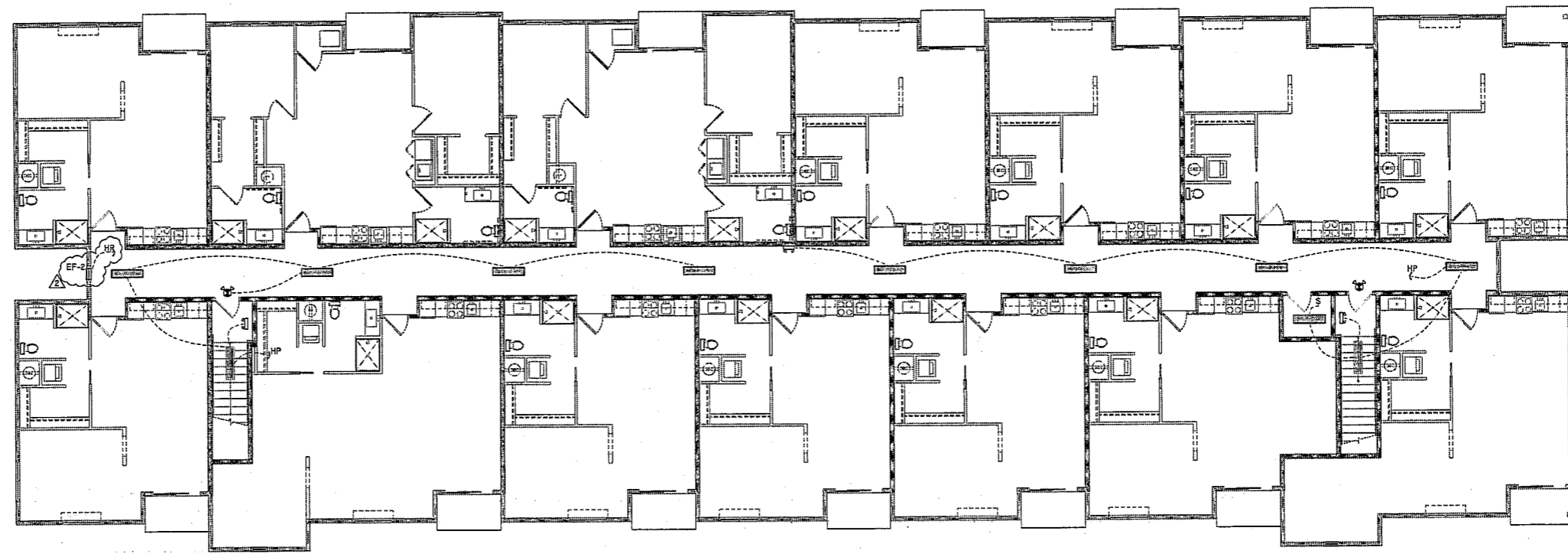
© COPYRIGHT - REUSE OR REPRODUCTION OF THIS DOCUMENT IS NOT PERMITTED WITHOUT WRITTEN PERMISSION

Y | X | W | V | U | T | S | R | P | N | M | L | K | J | H | G | F | E | D | C | B | A

15  
14  
13  
12  
11  
10  
9  
8  
7  
6  
5  
4  
3  
2  
1

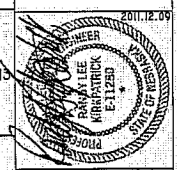


U | 8 | 2ND LEVEL ELECTRICAL PLAN  
1/8" = 1'-0"



U | 1 | 3RD LEVEL ELECTRICAL PLAN  
1/8" = 1'-0"

Y | X | W | V | U | T | S | R | P | N | M | L | K | J | H | G | F | E | D | C | B | A



Project Title: 8th Street Lofts  
8th and Pacific streets, Omaha Nebraska  
Page Description: 2nd and 3rd LEVEL ELECTRICAL PLANS

Date Issued: 9 DEC 2011  
Date Revised: 27 NOV 2011

© COPYRIGHT - REUSE OR REPRODUCTION OF THIS DOCUMENT IS NOT PERMITTED WITHOUT WRITTEN PERMISSION

E2.02