



January 10, 2012

MILITARY DEPARTMENT  
STATE of NEBRASKA  
LINCOLN, NEBRASKA

**NEBRASKA ARMY NATIONAL GUARD  
GTS DFAC KITCHEN REMODEL**

at  
**GREENLIEF TRAINING SITE  
6700 East "J" Street, Hastings, NE 68901**

**PROJECT NO. 31090315**

**A D D E N D U M   N O .   1**

The original specifications and drawings on the STATE OF NEBRASKA REQUEST for PROPOSAL FORM for the project noted above are amended as noted in this Addendum No. 1.

Receipt of this Addendum shall be acknowledged by inserting its number and date in the space provided on the Bid Form.

**ADDENDUM NO. 1**

NOTE TO ALL PLANHOLDERS: Please insert this Addendum into your copy of the Contract Documents for the above named project.

The following changes to the Contract Documents are issued by the CFMO-CMB and shall have the same force and affect as though a part of the original issue.

**ITEM NO.**

- |         |   |
|---------|---|
| ADD 1-1 | Please provide an allowance of \$4,000.00 in bid for custom wall finish above ceramic tile in Lounge/ Dining Room 117.  |
| ADD 1-2 | Please provide an allowance of \$1,595.00 in bid for use of Submittal Exchange for this project.  |
| ADD 1-3 | Clarification Sheet A1.1 – Corridor labeled Corridor 108 (leading to Dry Storage 101, Existing Mechanical Room 102, Existing Janitor 103 and Existing Toilet 104), shall be labeled Corridor 118. |
| ADD 1-4 | Clarification Sheet A1.1 and FS4.0 – Fire extinguishers shall be provided by the Owner and installed by the General Contractor  |

- ADD 1-5 All tables and chairs are by Owner and are not part of this Contract.
- ADD 1-6 Clarification to Detail 2/A3.1 and Specification Section 03 30 00: Please install 15 mil Stego with taped joints.
- ADD 1-7 Clarification: Excavate existing subgrade at floor demolition area for new 4" fill. Install new crushed limestone per Specification Section 03 30 00.
- ADD 1-8 Please see attached Specification Section 07 72 10 for new exterior aluminum ladder specification.
- ADD 1-9 Please see attached Structural Drawings S1, S2, S3, S4, S5, and S6 for revised structural at mechanical platform and for Lintel Schedule. Please disregard steel denoted on Sheet A3.2. At mechanical platform: 1 3/4" x 7 1/4" LVLs @12" o.c. are used in lieu of the 2x8 rafters; 2x6 @ 16" o.c. vertical studs are used in lieu of 2x8 studs.
- ADD 1-10 Remove existing perimeter insulation at new grade beam locations. Install new 2" rigid insulation on interior face of new grade beams.
- ADD 1-11 The following manufacturers have received prior approval for bidding purposes subject to shop drawing review:
- Hollow Metal Doors & Frames: Steelcraft Manufacturing

**Mechanical/Electrical Addenda Items:**

- ADD 1-12 Sheet M2.0 Mechanical Plans: See attachment M1 for revisions.
- ADD 1-13 Sheet M5.0 Mechanical Schedules: Diffuser, grille, and register schedule – Omit SR-2.
- ADD 1-14 Sheet M6.0 Risers and Fire Sprinkler Plan: See attachment M2 for revisions.
- ADD 1-15 Contractor shall be responsible for providing temporary power for construction purposes. Coordinate rating, voltage, and phase with other trades. Temporary power shall be metered separate from building service. Submetering, if approved by the Guard, is acceptable. The use of energy for construction purposes, shall be paid by the Contractor at Utility Company rates.
- ADD 1-16 The following light fixtures have received prior approval for bidding purposes subject to shop drawing review:  
Light Fixture Types 1, 1A, 2, 2A, 4, 12 Williams
- ADD 1-17 Sheet E2.0, 1<sup>st</sup> Level Lighting and Power Plan:  
Dining Hall 111 – Type 10 light fixtures above booth tables shall be track mounted. Reference light fixture schedule changes below for revised/additional model numbers. Reference attachment E1 for revised partial lighting plans.
- See attached drawing E2 for revised circuiting to MAU-1.
- Existing fire alarm manual pull stations include a plastic protective enclosure that shall be re-installed.

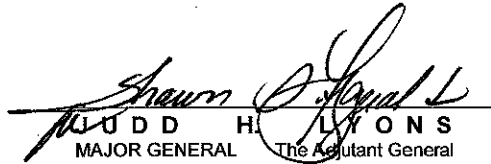
ADD 1-18 Sheet E3.0, Enlarged Kitchen Power Plan:  
See attachment E3 for revisions to hood H1/H2 controller circuit(s).

ADD 1-19 Sheet E4.0:

Light Fixture Schedule - Add fixture type 10T, Nora Lighting NT-331W, surface mounted track, with straight seamless connectors, to provide length of track shown on drawings, complete with all necessary mounting hardware and accessories. Provide pendant adapter, Nora Lighting NT-317W at the location of each type 10 pendant. Field modify fixture mono-point adapter to track pendant adapter.

Panel "C" Schedule – See attached schedule for revisions, attachment E4.

THIS ADDENDUM SHALL BE ATTACHED TO AND MADE A PART OF THE DRAWINGS AND SPECIFICATIONS AND SHALL BE ACKNOWLEDGED WITH THE BIDDER'S PROPOSAL.

  
J U D D H L Y O N S  
MAJOR GENERAL The Adjutant General

End of Addendum No. 1



**SECTION 07 72 10**

**FIXED LADDERS**

**PART 1 - GENERAL**

**1.1 SUMMARY**

- A. Section includes:  
Roof access ladders. Includes related hardware and attachments. Does not include mechanical or structural items.

**1.2 SUBMITTALS**

- A. Shop Drawings: Indicate configuration and dimension of components, adjacent construction, required clearances and tolerances, and other affected Work.
1. Ladder Units: Show types, elevations, thickness of metals, and full size profiles.
  2. Hardware: Show materials, finishes, locations of fasteners, types of fasteners, locations and types of operating hardware, and details of installation.
  3. General: Show connections of units and hardware to other Work. Include schedules showing location of each type and size of unit.
- B. Product Data: Manufacturer's technical data for each type of assembly, including setting drawings, templates, finish requirements, and details of anchorage devices.
- C. Manufacturer's Installation Instructions: Indicate installation requirements and rough-in dimensions.

**1.3 QUALITY ASSURANCE**

- A. Qualifications:
1. Manufacturer/Installer: Company specializing in manufacturing and installation of components specified in this Section with minimum of 5 years documented experience.

**1.4 DELIVERY, STORAGE, AND HANDLING**

- A. Deliver materials to Project site ready use.
- B. Exercise proper care in handling of Work so as not to injure finished surfaces. Protect Work from damage after it is in place.
- C. Store materials under cover in a dry and clean location off the ground. Remove materials that are damaged or otherwise not suitable for installation from Project site and replace with acceptable materials at no additional cost to Owner.

**1.5 WARRANTY**

- A. Warrant materials and workmanship against defects after completion and final acceptance of Work.
1. Repair defects, or replace with new materials, faulty materials or workmanship developed during guarantee period at no expense to Owner.

**PART 2 - PRODUCTS**

**2.1 FIXED LADDERS**

- A. Manufacturers:

1. Royalite Manufacturing, Inc.
  2. Substitutions: As approved by the Architect.
- B. Components:
1. Ladders: Provide assembled ladders that comply with OSHA and local building codes, with all edges rounded, clean, smooth, and burr free; dimensions as follows: 16'-8" +/- to top of top tread, 20'-2" +/- to top of extension.
  2. Ladder Treads: Extruded aluminum, 6063-T5 alloy, with self-cleaning serrated top surface and rounded front and back edges; fastened to handrails with concealed stainless steel screws; capable of withstanding 1200 pounds (3179 kg) load per tread without damage.
    - a. Cross Section for Vertical Ladders: Minimum 2 inches (50.8 mm) horizontal, nominal 1 inch (25 mm) vertical.
    - b. Width: 24 inches (610 mm).
    - c. Width: 18 inches (457 mm).
    - d. Spacing: 12 inches (305 mm) vertically
  3. Vertical Ladder Rails Supporting Treads: Extruded aluminum, 6063-T5 alloy, with rounded corners, approximately 4 inches (100 mm) deep; mounted so that centerline of tread is minimum of 7 inches (178 mm) from face of wall.
    - a. Wall brackets: Bent aluminum plate, 2 inches (50 mm) with by 3/16 inch (5 mm) thick.
    - b. Base Brackets: Wall bracket with additional angle brace; supporting foot of rail at least 4 inches (100 mm) above floor or grade
  4. Extended Rails: 0.875 inch (22 mm) diameter aluminum tubing; formed with two parallel tubes for each length of rail, with radiused corners, assembled by welding or with stainless steel fasteners.
    - a. At Top of Ladders Leading to Roofs or Landings: Extending minimum of 42 inches (1067 mm) vertically above top of parapet or landing and extending minimum of 10 inches (254 mm) past edge of roof or landing; with free walk-through onto roof or landing.
  5. Security Door for Vertical Ladder Without Cage: Sheet aluminum enclosure from 6 inches (150 mm) to 102 inches (2590 mm) above floor or grade; hinged for access to ladder with full height stainless steel piano hinge; secured with adjustable staple and plate for padlock.
  6. Anchor Bolts: Hot-dipped galvanized or stainless steel bolts; diameter as specified by Ladder Manufacturer; as required to provide adequate anchorage into substrate.

### **PART 3 - EXECUTION**

#### **3.1 EXAMINATION**

- A. Verification of Conditions: Examine areas and conditions under which Work is to be performed and identify conditions detrimental to proper or timely completion.
- B. Verify that deck, curbs, roof membrane, base flashing, walls, and other items affecting Work of this Section are in place and positioned correctly.
- C. Verify tolerances and correct improper conditions.
- D. Do not proceed until unsatisfactory conditions have been corrected.

#### **3.2 INSTALLATION**

- A. Install roof accessory items and components per manufacturer's instructions.
- B. Coordinate installation of components of this Section with installation of roof deck, roof structure, roofing membrane, base flashing, and walls.

- C. Coordinate installation of sealant and roofing cement with Work of this Section to ensure water tightness.
- D. Separate metal from incompatible metal or corrosive substrates, including wood, by coating concealed surfaces, at locations of contact with bituminous coating or providing other permanent separation.
- E. Flange Seals: Unless otherwise indicated, set flanges of accessory units in a thick bed of roofing cement to form a seal.

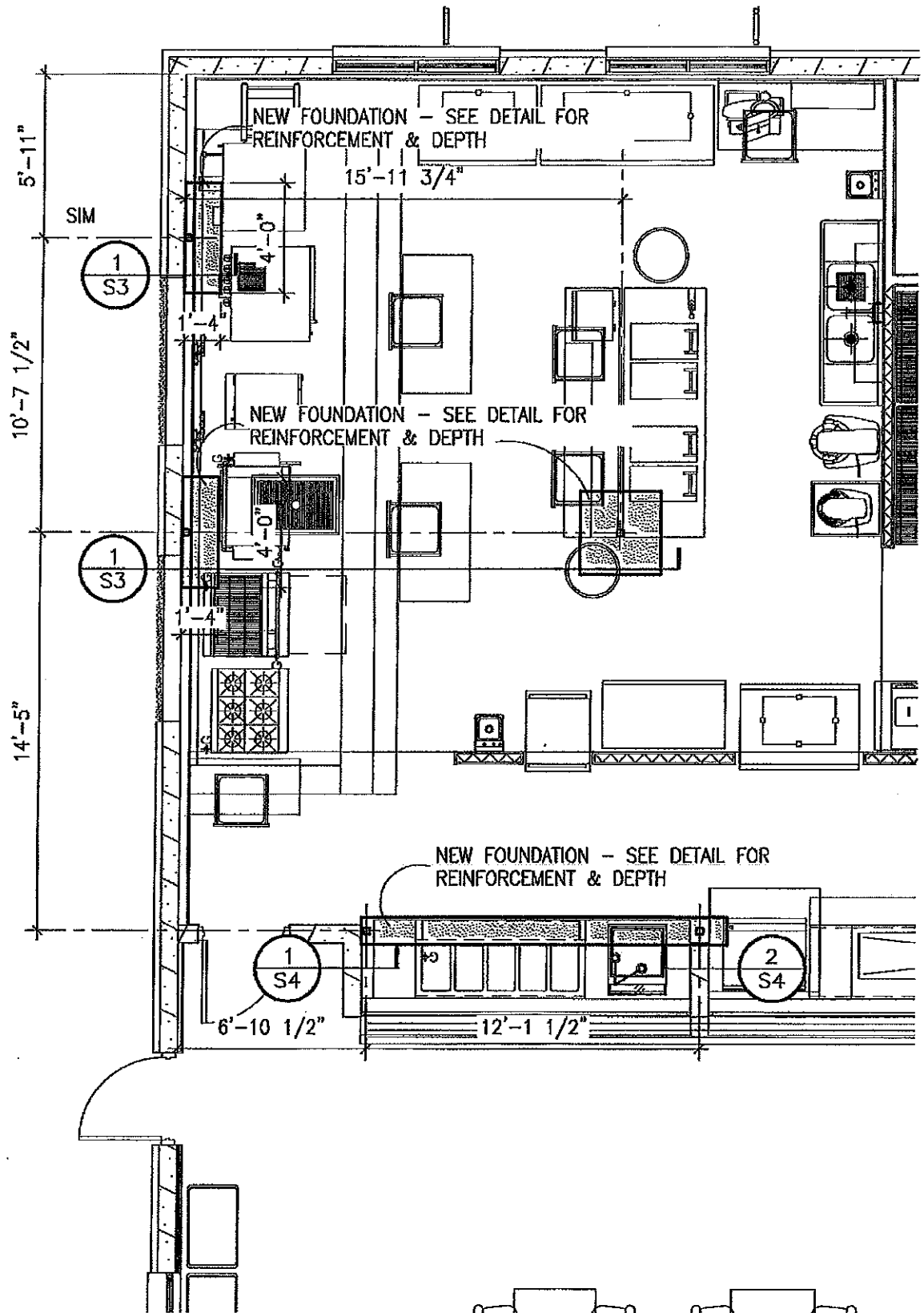
**3.3 ADJUSTING**

- A. Adjust movable parts for smooth operation.
- B. Operational Units: Test-operate units with operable components. Clean and lubricate joints and hardware. Adjust for proper operation.

**3.4 CLEANING**

- A. Clean exposed surfaces per manufacturer's written instructions. Touch up damaged metal coatings.

**END OF SECTION**



DATE:  
04 JAN. 2012  
PROJECT:  
SDG 11-334

**S1**

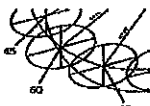
SCALE: 3/16"=1'-0"

+

structural [design] group

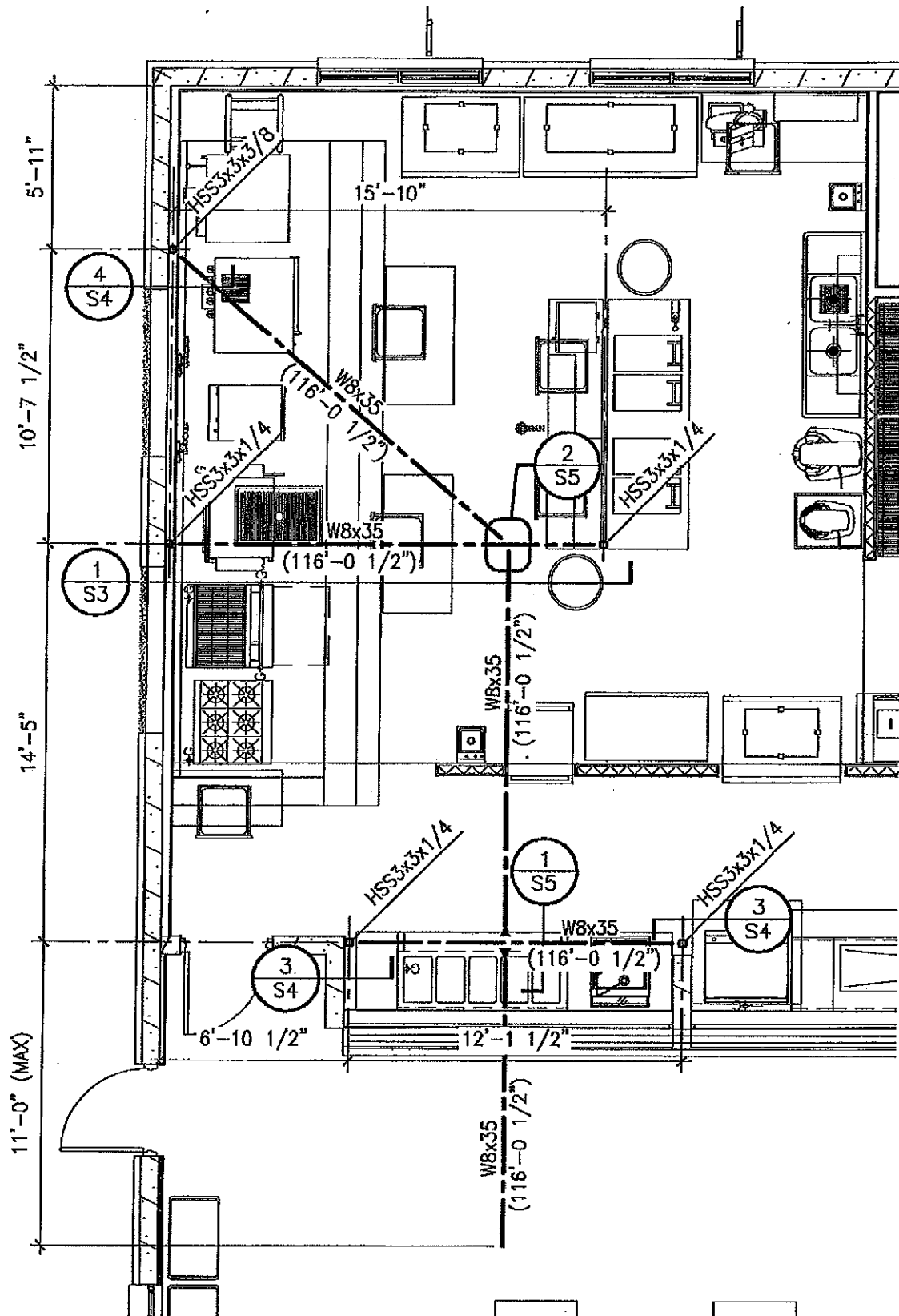
the prager building  
105 north 8th street, suite 100  
lincoln, nebraska 68508

p. 402.438.7788  
f. 402.438.7790



+

# Greenlief Roof Top Units Foundation Plan



DATE:  
04 JAN. 2012  
PROJECT:  
SDG 11-334

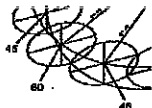
**S2**

SCALE: 3/16"=1'-0"

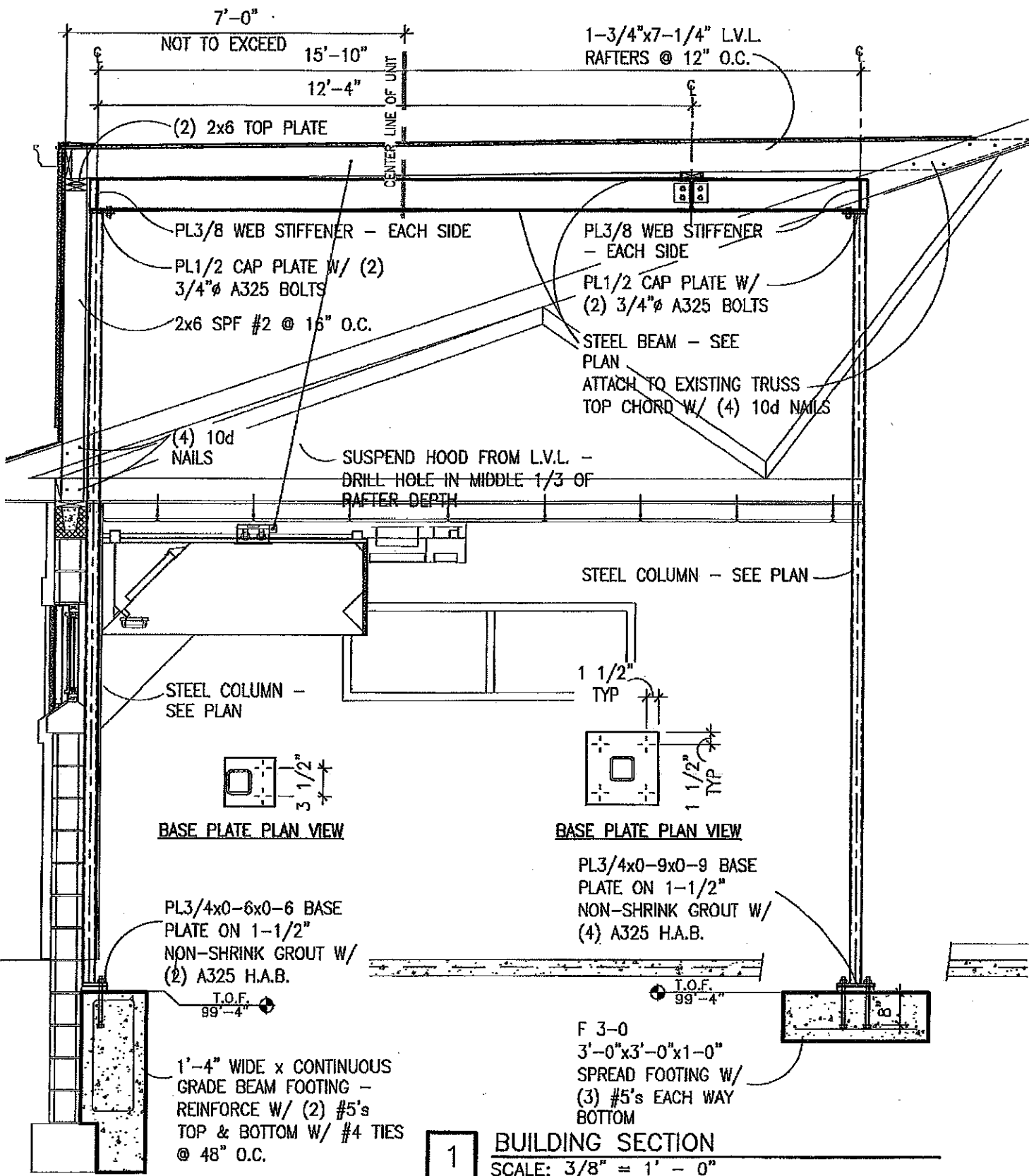
structural [design] group

the grainger building  
106 north 6th street, suite 100  
lincoln, nebraska 68508

p. 402 438 7788  
f. 402 438 7790



**Greenleaf Roof Top Units**  
**Roof Framing**



DATE:  
04 JAN. 2012  
PROJECT:  
SDG 11-334

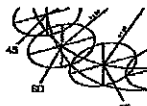
**S3**

SCALE: 3/16" = 1'-0"

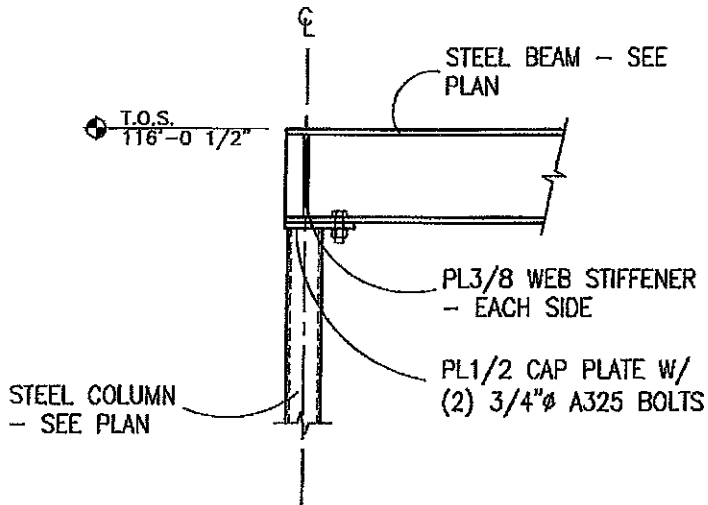
structural [design] group

the grainger building  
105 north 8th street, suite 100  
lincoln, nebraska 68503

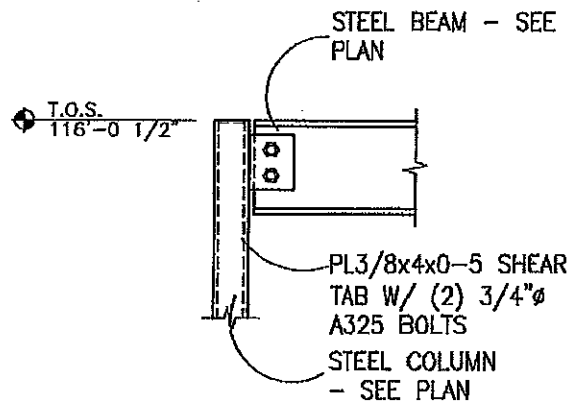
p. 402 488 7788  
f. 402 488 7780



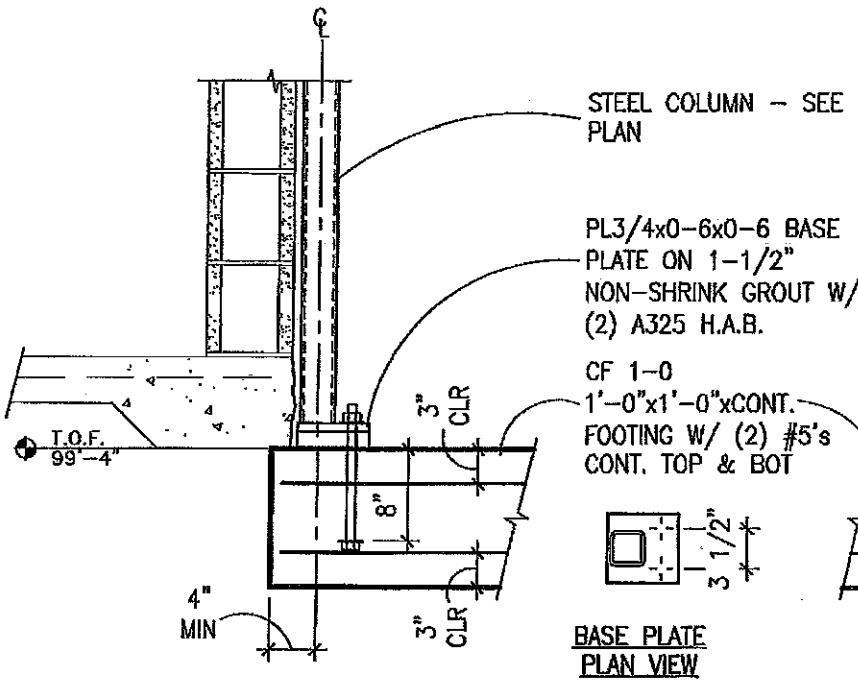
**Greenlief Roof Top Units**  
Building Section



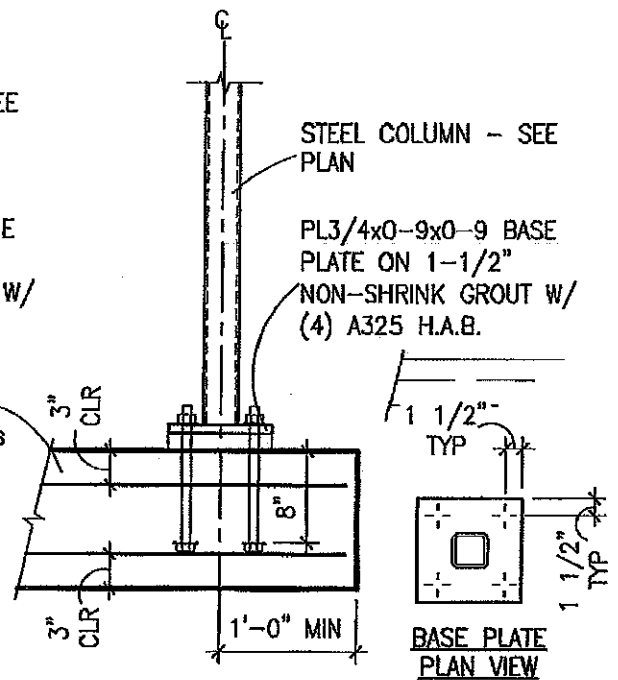
**3** COLUMN/BEAM CONN. DETAIL  
SCALE: 3/4" = 1' - 0"



**4** COLUMN/BEAM CONN. DETAIL  
SCALE: 3/4" = 1' - 0"



**1** COLUMN / FTG. DETAIL  
SCALE: 3/4" = 1' - 0"



**2** COLUMN / FTG. DETAIL  
SCALE: 3/4" = 1' - 0"

DATE:  
04 JAN. 2012  
PROJECT:  
SDG 11-334

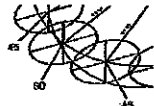
**S4**

SCALE: 3/4"=1'-0"

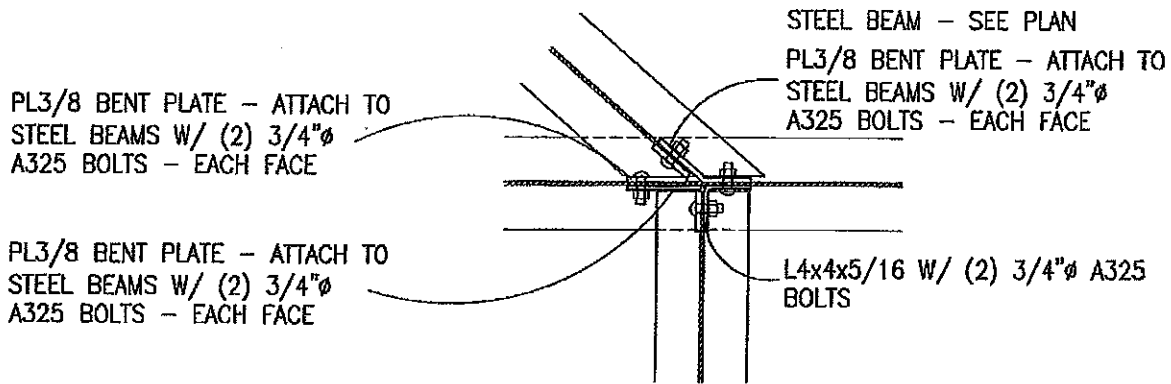
structural [design] group

the grainger building  
105 north 8th street, suite 100  
lincoln, nebraska 68508

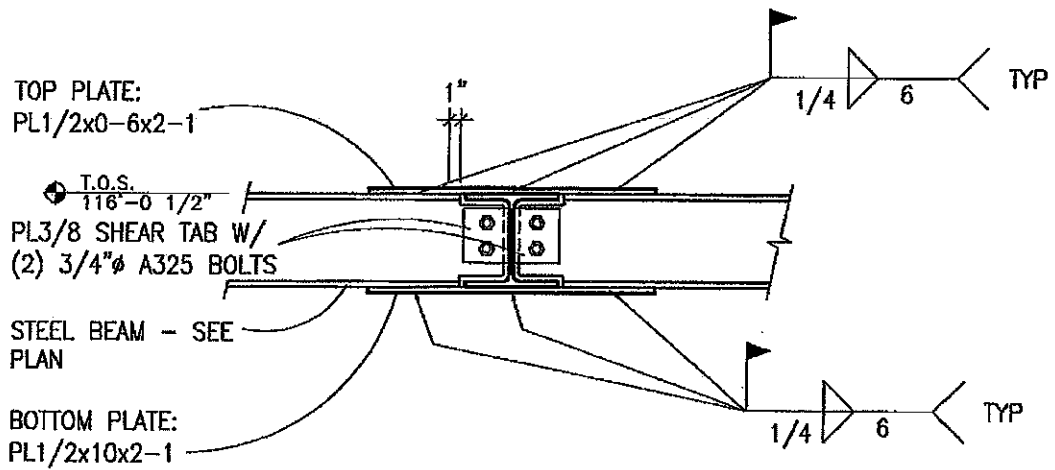
p. 402 438 7788  
f. 402 438 7790



**Greenlief Roof Top Units**  
Structural Details



**2** BEAM CONNECTION - PLAN VIEW  
SCALE: 3/4" = 1' - 0"



**1** MOMENT CONNECTION DETAIL  
SCALE: 3/4" = 1' - 0"

DATE:  
04 JAN. 2012  
PROJECT:  
SDG 11-334

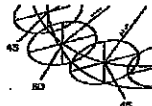
**S5**

SCALE: 3/4"=1'-0"

structural [design] group

the grainger building  
105 north 8th street, suite 100  
lincoln, nebraska 68508

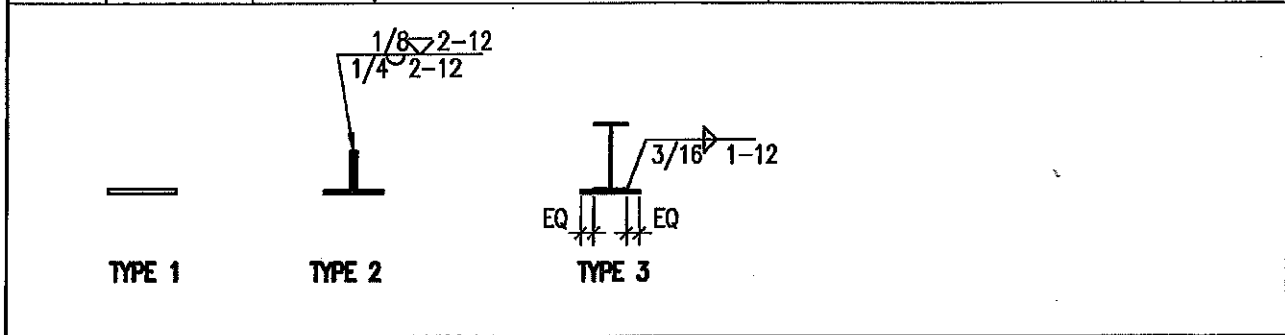
p. 402 438 7788  
f. 402 438 7790



**Greenrief Roof Top Units**  
Structural Details

## LINTEL SCHEDULE

MARK	BEARING	TYPE	DESCRIPTION	REMARKS
L-1	4"	1	1/4" PLATE	PL WIDTH TO BE 1" LESS THAN WALL WIDTH
L-2	4"	2	(2) L3 1/2x3 1/2x1/4	
L-3	7"	2	W8x15 W/ 1/4" PLATE	PL WIDTH TO BE 1" LESS THAN WALL WIDTH



ALL WALL THICKNESSES AND OPENING LENGTHS SHALL BE COORDINATE AND VERIFIED BY CONTRACTOR  
 MECHANICAL OPENING LINTELS SHALL BE COORDINATED AND VERIFIED WITH MECHANICAL DRAWINGS – USE L-1 FOR OPENINGS LESS THAN OR EQUAL TO 2'-0", FOR OPENINGS BETWEEN 2'-0" AND 4'-0" USE L-2, FOR OPENINGS BETWEEN 4'-0" AND 7'-0" AND L-3, FOR ANY OPENINGS LARGER THAN 7'-0" CONTACT STRUCTURAL DESIGN GROUP – WHERE LINTELS ARE SIDE BY SIDE EACH LINTEL SHALL RECEIVE THE FULL BEARING LENGTH LISTED IN THE SCHEDULE.

DATE:  
09 JAN. 2012  
PROJECT:  
SDG 11-334

S6

SCALE: NA

+

structural [design] group

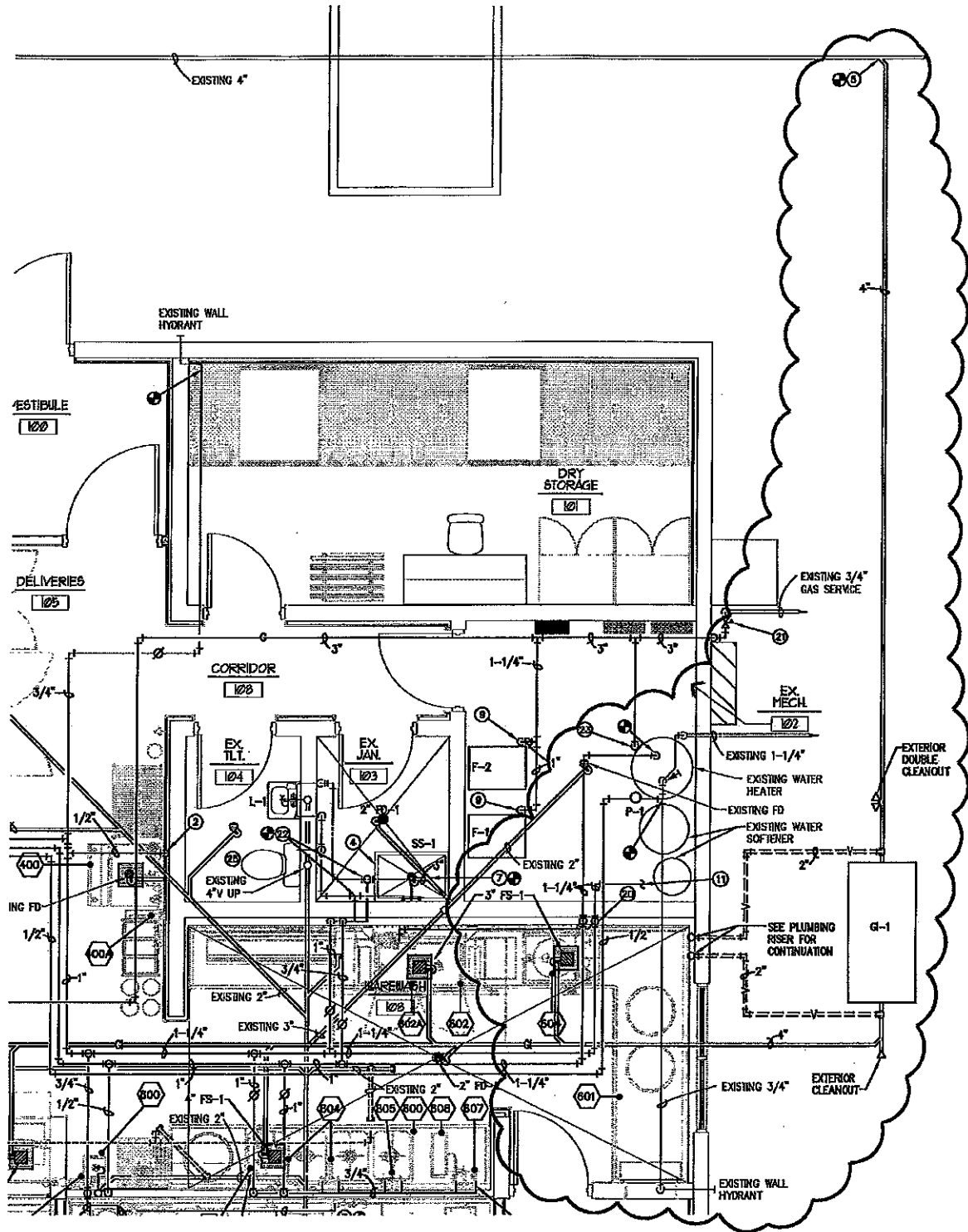
the grainger building  
 105 north 8th street, suite 100  
 lincoln, nebraska 68508

p. 402.438.7788  
 f. 402.438.7790

+

Greenlief Roof Top Units

CMU Lintel Schedule



**GREENLIEF TRAINING CENTER**  
**KITCHEN REMODEL - HASTINGS, NE**  
**PARTIAL MECHANICAL PLAN**

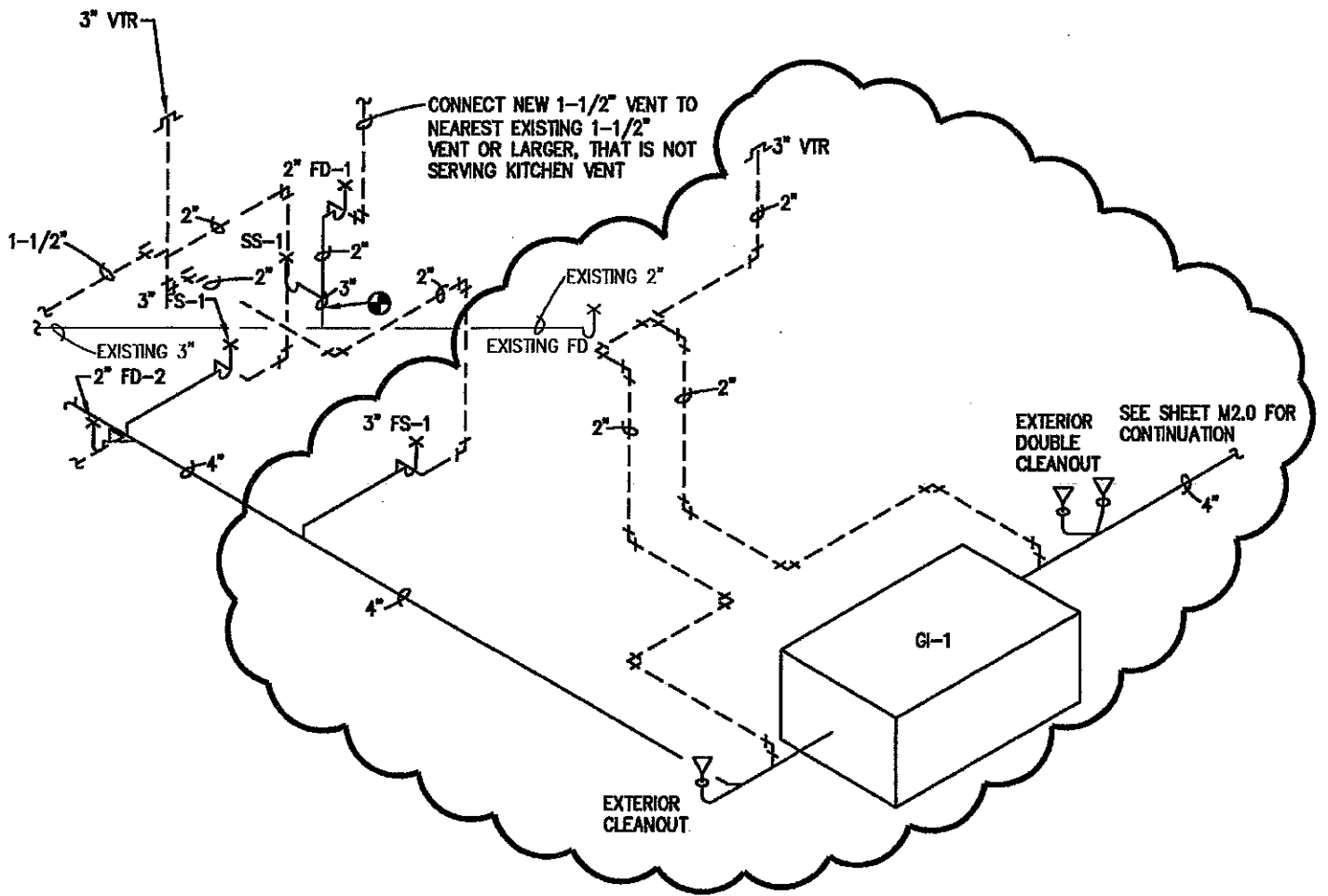
SCALE: 1/4" = 1'-0"

ADDENDUM #1



**Engineering Technologies Inc.**  
 Mechanical & Electrical Building Solutions  
 4939 South 133rd Street | Omaha, NE 68137  
 P 402.330.2772 | F 402.330.2630  
 825 M Street, Suite 200-1 | Lincoln, NE 68508  
 P 402.476.1273 | F 402.476.1274  
 ETI Project No: (2011-072)

01/09/12
SHEET
M2.0
ATTACHMENT NO.
M1
RPJ



GREENLIEF TRAINING CENTER  
 KITCHEN REMODEL - HASTINGS, NE  
 PARTIAL PLUMBING RISER

N.T.S.

ADDENDUM #1



**Engineering Technologies Inc.**  
 Mechanical & Electrical Building Solutions  
 4559 South 133rd Street | Omaha, NE 68137  
 P 402.330.2772 | F 402.330.2630  
 825 M Street, Suite 200 | Lincoln, NE 68508  
 P 402.476.1273 | F 402.476.1274  
 ETI Project No: (2011-072)

01/09/12

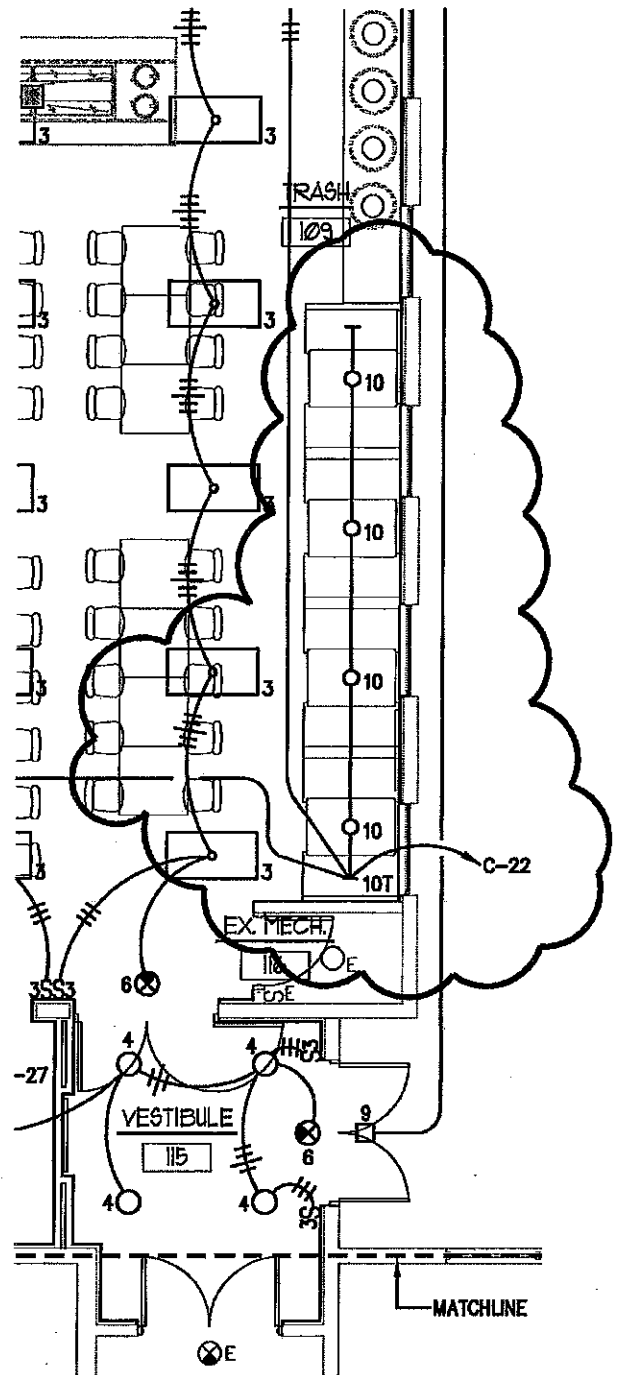
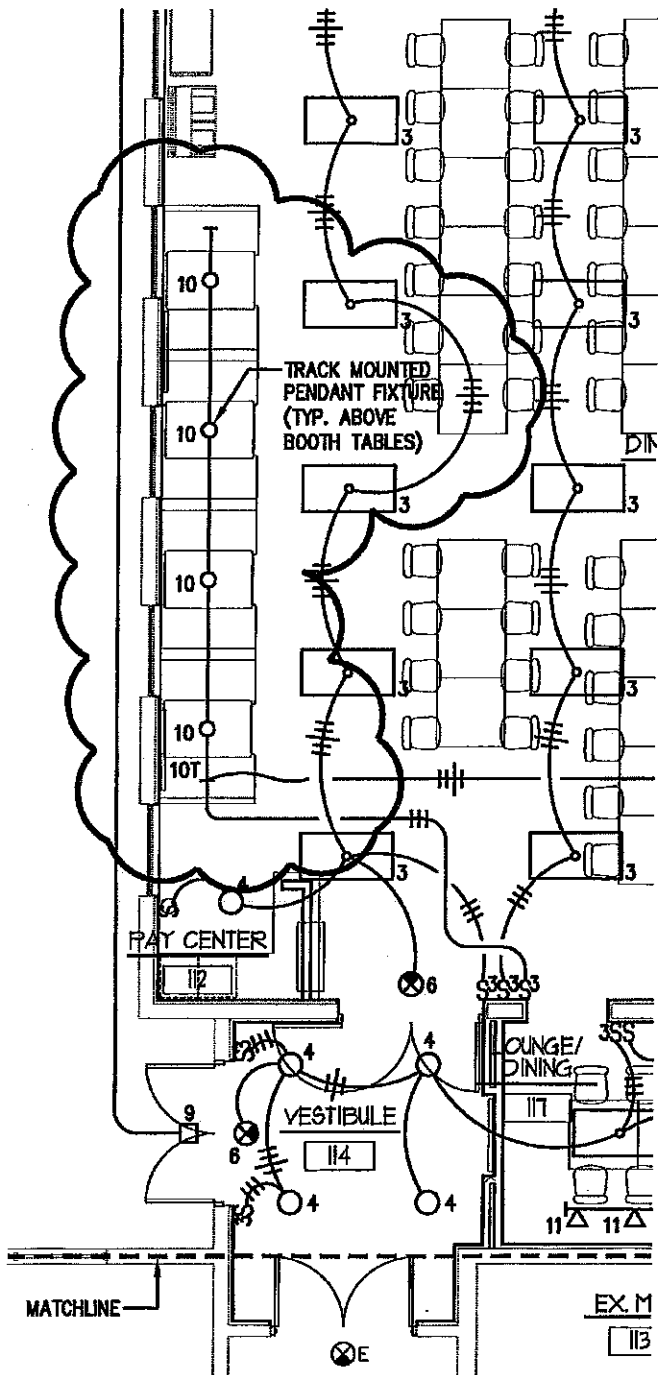
SHEET

M6.0

ATTACHMENT NO.

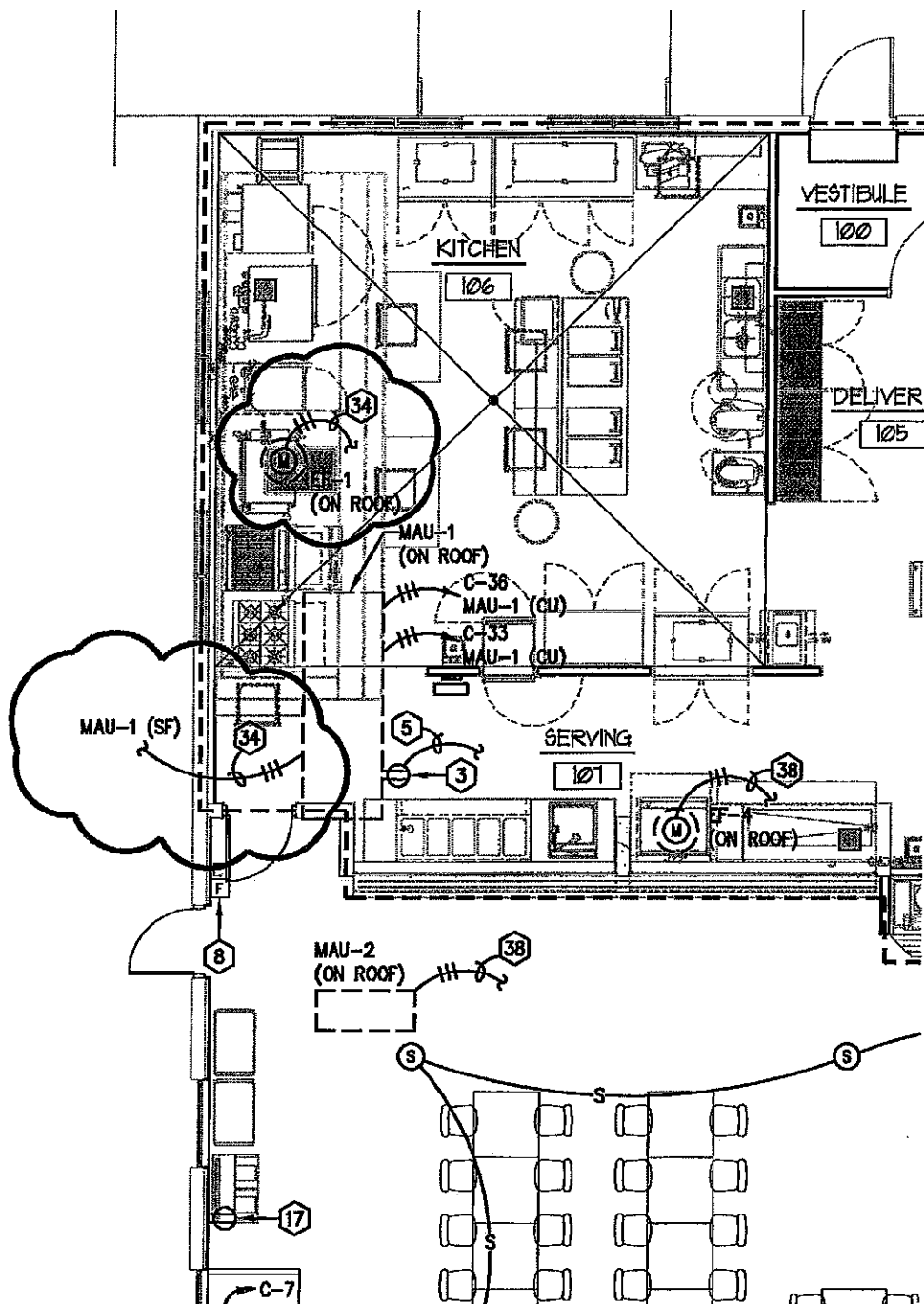
M2

RPJ



ALL RIGHTS RESERVED. NO PART OF THIS DOCUMENT IS TO BE REPRODUCED OR TRANSMITTED IN ANY FORM OR BY ANY MEANS, ELECTRONIC OR MECHANICAL, INCLUDING PHOTOCOPYING, RECORDING, OR BY ANY INFORMATION STORAGE AND RETRIEVAL SYSTEM.

<p><b>GREENLIEF TRAINING CENTER</b>  <b>KITCHEN REMODEL - HASTINGS, NE</b>  <b>PARTIAL LIGHTING PLANS</b></p>			<p><b>Engineering Technologies Inc.</b>          Mechanical &amp; Electrical Building Solutions          4559 South 133rd Street   Omaha, NE 68137          P 402.330.2772   F 402.330.2630          825 M Street, Suite 200   Lincoln, NE 68508          P 402.476.1273   F 402.476.1274          ETI Project No: 2011-072</p>	<p>01.09.12  <b>SHEET</b>  <b>E2.0</b>          ATTACHMENT NO.  <b>E1</b>          ADL</p>
<p>SCALE: 1/8" = 1'-0"</p>	<p>ADDENDUM #1</p>			



**GREENLIEF TRAINING CENTER**  
**KITCHEN REMODEL - HASTINGS, NE**  
**PARTIAL POWER PLAN**

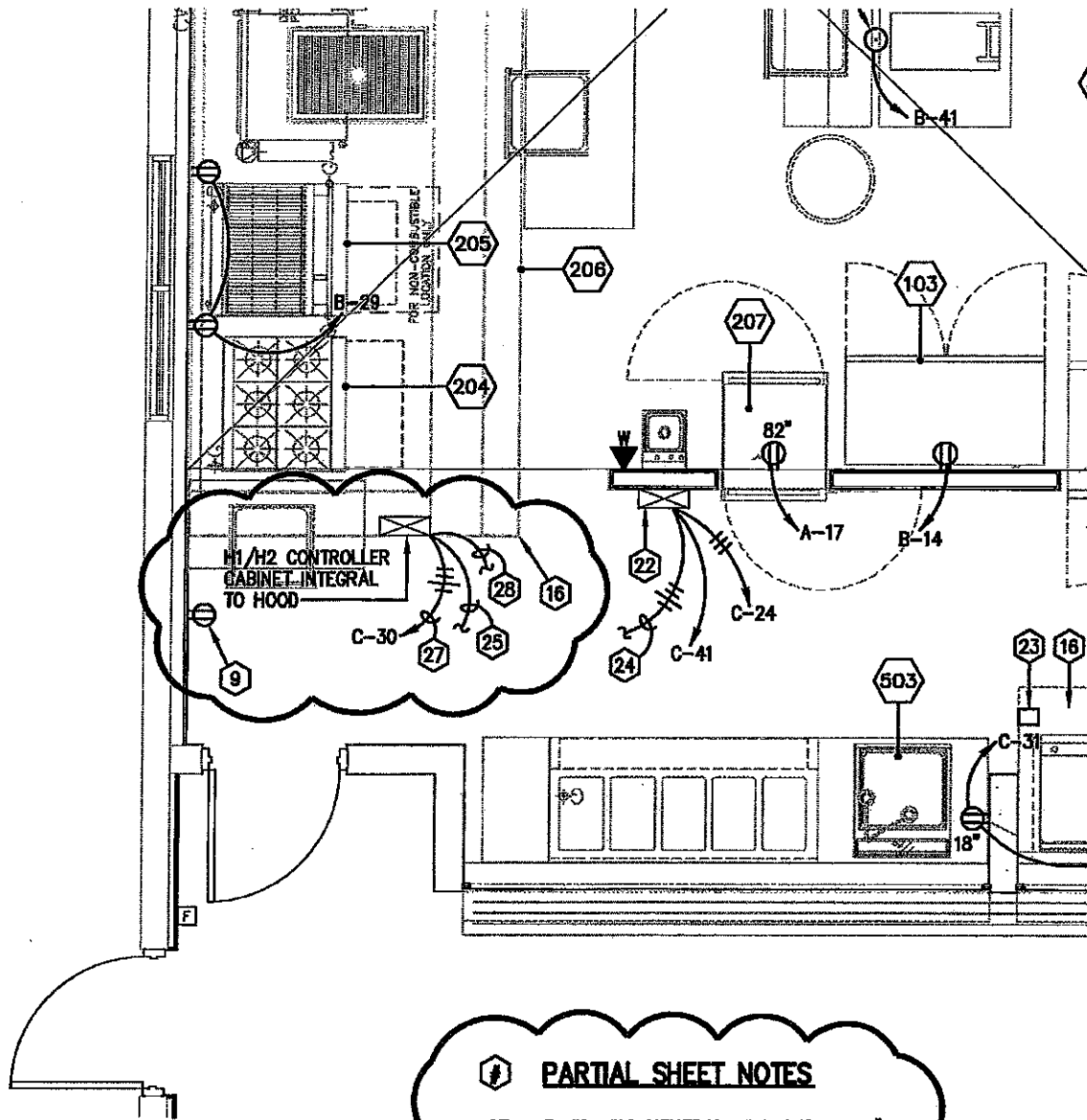


**Engineering Technologies Inc.**  
 Mechanical & Electrical Building Solutions  
 4559 South 133rd Street | Omaha, NE 68137  
 P 402.330.2772 | F 402.330.2630  
 825 M Street, Suite 200 | Lincoln, NE 68508  
 P 402.476.1273 | F 402.476.1274  
 ETI Project No: 2011-072

01.09.12
<b>SHEET</b> <b>E2.0</b>
<b>ATTACHMENT NO.</b> <b>E2</b>
ADL

SCALE: 1/8" = 1'-0"

ADDENDUM #1



**PARTIAL SHEET NOTES**

- 27. 3-#8, #10 NEUTRAL, #10 GND., IN 1" C.
- 28. TO HOOD LIGHTING.

GREENLIEF TRAINING CENTER  
 KITCHEN REMODEL - HASTINGS, NE  
 PARTIAL KITCHEN POWER PLAN



**Engineering Technologies Inc.**  
 Mechanical & Electrical Building Solutions  
 4559 South 133rd Street | Omaha, NE 68137  
 P 402.330.2772 | F 402.330.2630  
 825 M Street, Suite 200 | Lincoln, NE 68508  
 P 402.476.1273 | F 402.476.1274  
 ETI Project No: 2011-072

01.09.12

SHEET  
**E3.0**

ATTACHMENT NO.

**E3**

ADL

SCALE: 1/4" = 1'-0"

ADDENDUM #1

PANEL SCHEDULE												
PANEL C (NEW)		VOLTAGE		PHASE		22 KAIC RMS		225 A		MAIN LUGS		
		120 / 208V		3Ø		4 WRE, SOLID NEUTRAL				SURFACE MOUNTED		
LOAD DESCRIPTION	LOAD		BREAKER		NO.	PHASE	NO.	BREAKER		LOAD		LOAD DESCRIPTION
	VA	TYPE	POLES	AMPS				AMPS	POLES	TYPE	VA	
RECEPTACLE	700	R	1	20	1	A	2	15	1	L	600	UTILITY LIGHTING (E)
RECEPTACLE	700	R	1	20	3	B	4	20	1	L	1,400	KITCHEN LIGHTING
RECEPTACLE	1,000	R	1	20	5	C	6	20	1	L	800	SERVING LIGHTING
RECEPTACLE	1,000	R	1	20	7	A	8	20	1	R	800	E. KIT OUTLETS (E)
RECEPTACLE	1,200	R	1	20	9	B	10	20	1	S	1,000	SPARE
RECEPTACLE	1,000	R	1	20	11	C	12	20	1	X	800	PROJECTOR/SCREEN
COFFEE MAKER	3,500	X	2	40	13	A	14	15	1	X	300	DATA CABINET (E)
-	3,500	X	-	-	15	B	16	20	1	S	1,000	SPARE
F. SPRINKLER COMP (E)	1,800	X	1	20	17	C	18	20	1	L	925	DINING LIGHTING (E)
RM 118 HEATER (E)	1,500	M	1	20	19	A	20	20	1	L	1,385	DINING LIGHTING (E)
SPACE ONLY	-	-	1	20	21	B	22	20	1	L	800	DINING LIGHTING (E)
SPACE ONLY	-	-	1	20	23	C	24	20	3	M	1,355	MAU-2 / EF-4
SPACE ONLY	-	-	1	20	25	A	26	-	-	M	1,355	-
RECEPTACLE	600	R	1	20	27	B	28	-	-	M	1,355	-
RECEPTACLE	600	R	1	20	29	C	30	40	3	M	4,040	MAU-1 (SF/EF-1)
RECEPTACLE	1,200	R	1	20	31	A	32	-	-	M	4,040	-
MAU-1 (CU)	2,090	M	3	30	33	B	34	-	-	M	4,040	-
-	2,090	M	-	-	35	C	36	30	3	M	2,090	MAU-1 (CU)
-	2,090	M	-	-	37	A	38	-	-	M	2,090	-
SPARE	1,000	S	1	20	39	B	40	-	-	M	2,090	-
H3 LTG/CONTROLS	400	X	1	20	41	C	42	20	1	S	1,000	SPARE

LOAD INFORMATION		
	KVA	AMPS
TOTAL CONNECTED LOAD	59	164
EST. MAX DEMAND	48	133

NOTES:  
1. ALL CIRCUITS DESIGNATED WITH AN "(E)" ARE EXISTING, EXTEND FROM SQUARE D LOADCENTER TO NEW BREAKER IN PANEL "C" AS SHOWN.

GREENLIEF TRAINING CENTER  
 KITCHEN REMODEL - HASTINGS, NE  
 PANEL "C" SCHEDULE

SCALE: NONE

ADDENDUM #1



Engineering Technologies Inc.

Mechanical & Electrical Building Solutions

4559 South 133rd Street | Omaha, NE 68137  
 P 402.330.2772 | F 402.330.2630

825 M Street, Suite 200 | Lincoln, NE 68508  
 P 402.476.1273 | F 402.476.1274

ETI Project No: 2011-072

01.09.12

SHEET  
 E4.0

ATTACHMENT NO.

E4

ADL