

Sampson Construction Co., Inc.
3730 South 14th Street
Lincoln, NE 68502
Phone: (402) 434-5450
FAX: (402) 434-5466

Bid Bulletin #01

PROJECT: McCook Municipal Facility
Bid Package #11084-04
505 West C Street
McCook, NE

DATE: December 1, 2011

This Bid Bulletin includes items 1-1 through 1-1. Each item shall be fully incorporated into the Bidding/Contract Documents and have the same force and effect as though originally included. Bidders shall acknowledge receipt of this Bid Bulletin on the bid form.

Item 1-1 Attached is Addendum #1 from Prochaska & Associates dated November 29, 2011.

END OF BID BULLETIN #01

ADDENDUM NO. 1
(BID PACKAGE FOUR)

McCook MUNICIPAL BUILDING
NEW BUILDING FOR CITY OFFICES, FIRE DEPT. AND POLICE DEPT.
505 WEST C STREET
McCOOK, NE 69001

DATE OF ADDENDUM ISSUE: November 29, 2011
DATE OF BID OPENING: December 20, 2011
PROJECT NO. : 100211

NOTE TO ALL PLAN HOLDERS: Please insert this Addendum into your copy of the contract documents for the above named project.

The following changes to the contract documents are issued by the Architect/Engineer, shall be attached and made a part of the plans and specifications, shall be acknowledged with the bidder's proposal and shall have the same force and effect as though a part of the original issue. All other stipulations and requirements of the plans and specifications remain in effect.

CHANGES TO THE SPECIFICATIONS

TABLE OF CONTENTS: The Specifications Table of Contents has been revised to include a new Section #03510, and is re-issued with this Addendum.

SECTION #03510, CONCRETE WATERPROOFING ADMIXTURE: Add this section in its entirety to the Contract Documents, as part of this Addendum No. 1, Bid Package #4.

CHANGES TO THE DRAWINGS

SHEET #A1.2, SECOND FLOOR PLAN, MEZZANINE PLAN & DETAILS:

- a. Refer to the SECOND FLOOR PLAN. Modify the dimension between column grid B and column grid C to read: "17'-0 1/2".

SHEET #A6.1, FIRST FLOOR REFLECTED CEILING PLAN:

- a. Refer to the FIRST FLOOR REFLECTED CEILING PLAN. At Elevator Equipment #120A, change notation referring to gypsum board ceiling to read: "SPAN ELEVATOR EQUIPMENT ROOM WITH 20GA. 6" SHAFTWALL "E" STUDS @ 24" O.C., WITH 1" LINER PANEL AND 5/8" F.C. GYPSUM BOARD, TO ACHIEVE 1-HOUR FIRE-RATED ASSEMBLY, PER USG TEST No. NER-258."

SHEET #S1.1, FIRST FLOOR FOUNDATION PLAN:

- a. Refer to the FIRST FLOOR FOUNDATION PLAN. Delete the 6'-0" north-south dimension from column grid C to the center of the stairs' concrete column and substitute with 6'-11".

SHEET #S1.2, APPARATUS BAY FOUNDATION PLAN & DETAILS:

- a. Point of clarification for the APPARATUS BAY FOUNDATION PLAN. The 6” reinforced CMU non-bearing walls located beneath the mezzanine are to be supported on an 8” thickened slab similar to detail #8/S3.4; denote dowel bars with standard hook at bottom (alternate direction of hooks) for vertical masonry wall reinforcement.

SHEET #S2.2, SECOND FLOOR ROOF FRAMING PLAN:

- a. Refer to SECOND FLOOR ROOF FRAMING PLAN. Modify the dimension between column grid B and column grid C to read: “17’-0 1/2”.

SHEET #S5.4, STAIR PLAN & DETAILS:

- a. Refer to ENLARGED MEZZANINE STAIR PLAN. Delete the stringer designations “HSS 12x4x3/8” and substitute with “HSS 12x2x5/16.”
- b. Refer to Detail #1. Delete the stringer designation “HSS 12x4x3/8” and substitute with “HSS 12x2x5/16.”
- c. Refer to Detail #3. Modify the top of the intermediate stair landing slab to be 1” beneath the top of the curved tube steel landing support to account for the stair landing slab depth being reduced from 4” to 3”. Reinforce the 3” stair landing slab with 4x4 – W2.9xW2.9 WWM centered within this slab.
- d. Refer to Detail #3 at the left side of the intermediate stair landing. Delete the note “L 4x4x1/4” and substitute with “1/4”x3”x16” BENT PL W/ 1/2”Ø x 1’-6” D.B.A. @ 18” O.C.” to account for the layout of the architectural stairs, as indicated on sheets #A1.2, #A1.3 and #A4.5.
- e. Refer to Detail #3 at the left side of the intermediate stair landing. Delete the steel beam note “1/2”Ø x 3” HEADED STUDS @ 1” O.C.” and substitute with “1/2”Ø x 2” HEADED STUDS @ 1’-0” O.C.”
- f. Refer to Detail #3 at the right side of the intermediate stair landing. Delete the note “L 4x4x1/4 (RADIUSED) W/ 1/2” Ø x 1’-6” D.B.A. @ 24” O.C.” and substitute with “L4x3x1/4 – LLH (RADIUSED) W/ 1/2”Ø x 1’-6” D.B.A. @ 24” O.C.”
- g. Refer to Detail #6. Delete the angle “L 4x4x1/4” and substitute with “1/4”x3”x16” BENT PL W/ 1/2”Ø x 1’-6” D.B.A. @ 18” O.C.” to account for the layout of the architectural stairs, as indicated on sheets #A1.2, #A1.3 and #A4.5.
- h. Refer to Detail #6. Delete the steel beam note “1/2”Ø x 3” HEADED STUDS @ 1’-0” O.C.” and substitute with “1/2”Ø x 2” HEADED STUDS @ 1’-0” O.C.”
- i. Refer to Detail #7. Modify the top of the intermediate stair landing slab to be 1” beneath the top of the curved tube steel landing support to account for the stair landing slab depth being reduced from 4” to 3”. Reinforce the 3” stair landing slab with 4x4 – W2.9xW2.9 WWM centered within this slab.
- j. Refer to Detail #7. At the right side of the intermediate stair landing, delete the note “L 4x4x1/4 (RADIUSED) W/ 1/2”Ø x 1’-6” D.B.A. @ 24” O.C.” and substitute with “L4x3x1/4 – LLH (RADIUSED) W/ 1/2”Ø x 1’-6” D.B.A. @ 24” O.C.”
- k. Refer to Detail #7. At the left side of the intermediate stair landing, delete the steel beam note “1/2”Ø x 3” HEADED STUDS @ 1’-0” O.C.” and substitute with “1/2”Ø x 2” HEADED STUDS @ 1’-0” O.C.”

SHEET #E1.1, FIRST FLOOR LIGHTING PLAN & FIXTURE SCHEDULE:

- a. Refer to Sheet Notes (upper right-hand corner). Add Keynote #4 to state: “#4. Momentary Switch for Timeclock override.”

- b. Refer to FIRST FLOOR LIGHTING PLAN. Add notation for momentary switch, three places on plan, per attached SUPPLEMENTAL DRAWING #E1.1a, included with this addendum.

SHEET #E1.2, SECOND FLOOR & MEZZANINE LIGHTING PLANS:

- a. Refer to Sheet Notes (upper right-hand corner). Add Keynote #3 to state: “#3. Momentary Switch for Timeclock override.”
- b. Refer to SECOND FLOOR LIGHTING PLAN. At notation for momentary switch in Training Room Lobby, near exterior door, add Keynote #3 reference, per attached SUPPLEMENTAL DRAWING #E1.2a, included with this addendum.

SHEET #E2.1, FIRST FLOOR POWER & SYSTEMS PLAN:

- a. Refer to FIRST FLOOR POWER & SYSTEMS PLAN. At Room #116, COPY AREA, revise all countertop receptacle mounting heights to +48”.
- b. At Room #126, ADMINISTRATIVE ASSISTANT, move receptacle denoted as “+38” south approximately 30-inches.

SHEET #E2.2, SECOND FLOOR & MEZZANINE POWER & SYSTEMS PLANS:

- a. Refer to SECOND FLOOR POWER & SYSTEMS PLAN. At Room #222, DAY ROOM, add mounting height notation to TV junction box to state “+84”.

Please acknowledge receipt of this Addendum #1 (Bid Package 4) on your bid form.

Respectfully Submitted,

PROCHASKA & ASSOCIATES

BY: _____
Curtis Field, AIA

Attachments: Table of Contents (8 ½”x 11”), dated 11/22/11
SECTION #03510 – CONCRETE WATERPROOFING ADMIXTURE
(8 ½”x 11” - Four pages)
SUPPLEMENTAL SHEET #E1.1a (8 ½”x 11”), dated 11/28/11
SUPPLEMENTAL SHEET #E1.2a (8 ½”x 11”), dated 11/28/11

McCook Municipal Building

BID PACKAGE #4

FOUNDATION AND STRUCTURAL FRAMING

November 22nd, 2011

TABLE OF CONTENTS

DIVISION 0 BIDDING REQUIREMENTS:

NOTICE TO BIDDERS

PROPOSAL FORM

GENERAL CONDITIONS (*RELEASED W/ BID PACKAGE #1*)

SUPPLEMENTAL CONDITIONS (*RELEASED W/ BID PACKAGE #1, REVISED 10-25-11*):

SHOP DRAWING TRANSMITTAL

COORDINATION MEETING AGENDA

JOB SITE SIGN

DIVISION 1 GENERAL REQUIREMENTS (REVISED AND RE-RELEASED W/BID PACKAGE #4):

01100 SUMMARY

01230 ALTERNATES (*RELEASED W/ BID PACKAGE #2*)

01250 CONTRACT MODIFICATION PROCEDURES

01270 UNIT PRICES (*RELEASED W/ BID PACKAGE #2*)

01290 PAYMENT PROCEDURES

01310 PROJECT MANAGEMENT AND COORDINATION

01320 CONSTRUCTION PROGRESS DOCUMENTATION

01330 SUBMITTAL PROCEDURES

01400 QUALITY REQUIREMENTS

01420 REFERENCES

01500 TEMPORARY FACILITIES AND CONTROLS

01524 CONSTRUCTION WASTE MANAGEMENT

01600 PRODUCT REQUIREMENTS

01700 EXECUTION REQUIREMENTS

01732 SELECTIVE DEMOLITION

01770 CLOSEOUT PROCEDURES

01781 PROJECT RECORD DOCUMENTS

01782 OPERATION AND MAINTENANCE DATA

01820 DEMONSTRATION AND TRAINING

DIVISION 2 SITE WORK: (PREVIOUSLY RELEASED W/ BID PACKAGE #2)

(*SPECS ON CIVIL DRAWINGS*)

ATTACHMENT:

GEOTECHNICAL REPORT

DIVISION 3 CONCRETE:

03300 CAST-IN-PLACE CONCRETE

03510 CONCRETE WATERPROOFING ADMIXTURE

DIVISION 4 MASONRY:

04810 UNIT MASONRY ASSEMBLIES

DIVISION 5 METALS:

05120 STRUCTURAL STEEL

05210 STEEL JOISTS

100211

05310 STEEL DECK
05400 COLD-FORMED METAL FRAMING
05500 METAL FABRICATIONS

DIVISION 6 WOOD AND PLASTICS:

06100 ROUGH CARPENTRY
06160 SHEATHING AND WEATHER BARRIER
06402 INTERIOR ARCHITECTURAL WOODWORK (CASEWORK)

DIVISION 7 THERMAL AND MOISTURE PROTECTION:

07170 BENTONITE WATERPROOFING
07210 BUILDING INSULATION
07411 METAL ROOF PANELS
07412 METAL WALL PANELS
07460 SIDING
07620 SHEET METAL FLASHING
07841 THROUGH-PENETRATION FIRESTOP SYSTEMS
07920 JOINT SEALANTS

DIVISION 8 DOORS AND WINDOWS:

08110 STEEL DOORS AND FRAMES
08211 FLUSH WOOD DOORS
08331 OVERHEAD COILING DOORS
08361 SECTIONAL OVERHEAD DOORS
08411 ALUMINUM FRAMED ENTRANCES AND STOREFRONT
08520 ALUMINUM WINDOWS
08710 DOOR HARDWARE
08800 GLAZING

DIVISION 9 FINISHES:

09111 NON-LOAD-BEARING STEEL FRAMING
09250 GYPSUM BOARD
09310 CERAMIC TILE
09511 ACOUSTIC PANEL CEILINGS
09651 RESILIENT FLOOR TILE AND ACCESSORIES
09680 CARPET
09773 FIBERGLASS REINFORCED PLASTIC PANELS
09910 PAINTING (INCLUDES HIGH PERFORMANCE)

DIVISION 10 SPECIALTIES:

10101 MARKER BOARDS
10270 ACCESS FLOORING
10350 FLAGPOLES
10505 METAL LOCKERS
10522 FIRE PROTECTION CABINETS
10523 FIRE EXTINGUISHERS
10801 TOILET AND BATH ACCESSORIES

DIVISION 12 FURNISHINGS:

12491 HORIZONTAL BLINDS

DIVISION 13 SPECIAL CONSTRUCTION:

13125 METAL BUILDING SYSTEMS (*RELEASED W/ BID PACKAGE #1*)
13852 DIGITAL ADDRESSIBLE FIRE ALARM SYSTEM
13915 FIRE SUPPRESSION PIPING AND ACCESSORIES

DIVISION 14 CONVEYANCES:

14240 HYDRAULIC ELEVATORS

DIVISION 15 MECHANICAL:

15050	BASIC MECHANICAL MATERIALS AND METHODS
15055	MOTORS
15060	HANGERS AND SUPPORTS
15075	MECHANICAL IDENTIFICATION
15081	DUCT INSULATION
15082	EQUIPMENT INSULATION
15083	PIPE INSULATION
15110	VALVES
15121	PIPE EXPANSION FITTINGS
15122	METERS AND GAGES
15140	DOMESTIC WATER PIPING
15150	SANITARY WASTE AND VENT PIPING
15181	HYDRONIC PIPING
15183	REFRIGERANT PIPING
15185	HYDRONIC PUMPS
15194	FUEL GAS PIPING
15213	NITROGEN GAS AND COMPRESSED AIR PIPING
15269	VARIABLE FREQUENCY CONTROLLERS
15410	PLUMBING FIXTURES
15415	DRINKING FOUNTAINS AND WATER COOLERS
15430	PLUMBING SPECIALTIES
15446	SUMP PUMPS
15486	FUEL-FIRED CONDENSING TYPE WATER HEATERS
15513	CONDENSING BOILERS
15542	FUEL-FIRED RADIANT HEATERS
15550	VENTS AND STACKS
15626	ROTARY-SCREW WATER CHILLERS
15671	CONDENSING UNITS
15725	MODULAR INDOOR AIR HANDLING UNITS
15752	HUMIDIFIERS
15761	AIR COILS
15764	CONVECTION HEATING UNITS
15767	PROPELLER UNIT HEATERS
15815	METAL DUCTS
15820	DUCT ACCESSORIES
15837	CENTRIFUGAL FANS
15839	VEHICLE EXHAUST EXTRACTION SYSTEM
15840	AIR TERMINAL UNITS
15855	DIFFUSERS REGISTERS AND GRILLES
15856	INTAKE AND RELIEF VENTILATORS
15861	AIR FILTERS
15900	INSTRUMENTATION AND CONTROLS
15950	TESTING, ADJUSTING AND BALANCING

DIVISION 16 ELECTRICAL:

16010	GENERAL ELECTRICAL REQUIREMENTS
16060	GROUNDING AND BONDING
16073	HANGERS AND SUPPORTS FOR ELECTRICAL SYSTEMS
16075	ELECTRICAL IDENTIFICATION
16120	CONDUCTORS AND CABLES
16130	RACEWAYS AND BOXES
16140	WIRING DEVICES

16410	ENCLOSED SWITCHES AND CIRCUIT BREAKERS
16420	ENCLOSED CONTROLLERS
16441	SWITCHBOARDS
16442	PANELBOARDS
16420	ENCLOSED CONTROLLERS
16491	FUSES
16511	INTERIOR LIGHTING
16521	EXTERIOR LIGHTING

SECTION 03510 - CONCRETE WATERPROOFING ADMIXTURE

PART 1 - GENERAL

1.1 RELATED DOCUMENTS

- A. Drawings and general provisions of the Contract, including Contractual Conditions and Division 01 Specification Sections, apply to this Section.

1.2 SUMMARY

- A. Section Includes: Barrier-1 High Performance Concrete Admixture

1.3 REFERENCES

- A. American Society for Testing and Materials International (ASTM)
 - 1. ASTM C 157: Standard Test Method for Length Change For Hardened Hydraulic-Cement Mortar and Concrete
 - 2. ASTM D 5084: Standard Test Methods for Measurement of Hydraulic Conductivity of Saturated Porous Materials Using a Flexible Wall Permeameter.
 - 3. ASTM E 96: Standard Test Method for Water Vapor Transmission of Materials
 - 4. ASTM E 1643 Standard Practice for Selection, Design, Installation, and Inspection of Water Vapor Retarders Used in Contact with Earth or Granular Fill Under Concrete Slabs
 - 5. ASTM E 1745 Standard Specification for Water Vapor Retarders Used in Contact with Soil or Granular Fill under Concrete Slabs
 - 6. ASTM C 494/C 494M-08a Chemical Admixtures For Concrete Type S

1.4 SUBMITTALS

- A. Product Data: Manufacturer's printed data sheets.
 - 1. Include standard slab repair details.
 - 2. Include vapor barrier data showing compliance with this section
- B. Product test reports performed by a qualified independent testing agency evidencing compliance of products with specified requirements of water-vapor transmission based on comprehensive testing of current products.
- C. Manufacturer's certificate certifying admixture provided meets or exceeds specified requirements.
- D. Sample warranty.

1.5 QUALITY ASSURANCE

- A. Single Source Responsibility: Single source product from one manufacturer.
- B. Toxicity/Hazardous Materials: Provide products that contain no urea-formaldehyde.
- C. Repairs to slabs must be in accordance with concrete industry standards and meeting waterproofing admixture manufacturer's published details.
- D. A Pre-installation review prior to concrete production is required for product familiarization and characteristics – see Specification Section 01310 – Project Management & Coordination.

1.6 DELIVERY, STORAGE, AND HANDLING

- A. Comply with manufacturers written instructions for handling prior to adding to concrete batch.
- B. Store both components protected from exposure to harmful weather conditions and in a temperature controlled area above 36 deg F. Do not allow product to freeze.

1.7 WARRANTY

- A. Project Warranty: Refer to Conditions of the Contract for project warranty provisions.
- B. Provide manufacturer's standard warranty documents executed by an authorized company official, Manufacturer's warranty is in addition to, and not a limitation of, other rights the owner may have under provisions of the Contract Documents.
 - 1. Warranty Period: Ten years commencing on the Date of Substantial Completion.
 - 2. Warranty Terms: Terms to include moisture related failures, including all finish floor materials and labor.

PART 2 - PRODUCTS

2.1 MANUFACTURERS

- A. Concrete moisture proofing admixture for interior slab construction shall be Barrier-i Inc., 1901 Tumblewater Blvd, Ocoee, Florida 34761. Contact Manufacturer's representative: at 877.224.5850, Fax: 866.594.3490. Email: infobarrier-1.com

2.2 MATERIALS

- A. Product Description: Barrier-i is a sodium silicate-based, complex formula that is free of all volatile organic compounds (VOC). It is specifically designed to have a natural chemical reaction with pre-existing elements inside the concrete to eliminate the route of moisture vapor emission through concrete by closing down the integral capillary system. The chemical reaction forms a permanent barrier (capillary break) which will become integral to the concrete and irremovable.
 - 1. Water Vapor Transmission: 0.20 US perms per ASTM D 5084
 - 2. Appearance: Colorless
 - 3. Odor: None
 - 4. Toxicity: None
 - 5. Flammability: None
 - 6. Ph: 11.3
 - 7. Shelf Life: Indefinite
 - 8. Weight: 11.2 lbs per gallon
 - 9. Freeze Temp: 32°F
 - 10. Storage Temp: Above 36°F
 - 11. Solvent: Water
 - 12. Acid Resistance: Excellent

13. Hazardous Vapors: None
14. Capillary Break: Calcium Silicate Hydrate Gel
15. Installation: All concrete
16. VOC Levels: Zero

B. Barrier-1 contains an anti-microbial biocide to inhibit mold and bacteria growth.

2.3 RELATED MATERIALS

A. Sheet Vapor Retarder: ASTM E 1745-09 Class A vapor barrier maintaining a permeance of 0.01 US perms (grains/ft²*hr*inHg) or less after the required product conditioning specified in ASTM E 1745-09 Include manufacturer's recommended adhesive or pressure-sensitive tape.

1. Products: Any sheet vapor barrier that can show compliance with required perm rating after product conditioning specified in ASTM E 1745-09. Final approval is with Barrier-1

PART 3- EXECUTION

3.1 APPLICATION

A. Install vapor barrier following ASTM E 1643-98(2005) guidelines.

B. Waterproofing Admixture: Add Barrier-1 Admixture in accordance with manufacturer's recommendations to all ready mix concrete to be placed in interior slab—on-grade interior elevated slab construction, vertical cast in place And any floor slab scheduled to receive an additional floor finish material, that requires a low moisture content in the slab prior to material installation.

C. A representative or agent of Barrier-1 Admixture must be present at the jobsite during the placement of all treated concrete. Do not proceed without the Barrier-1 representative being present for the certification of the mix and placement process. Provide minimum 10 days notice of the placement of the treated concrete.

D. Dispense Barrier-1 admixture at a rate of 14 oz. per 100 lbs. of cementitious materials at the tail end of the load, dose to be within plus or minus 3 percent. Additional dosage may be required based on the mix design.

1. Add Barrier-1 Admixture to ready mix concrete truck, in the require dosage, and mix for 7 (seven) minutes before discharge. Barrier-1 Admixture is to be used in lieu of designed mix water, not in addition to mix water.
2. Do not alter 0.45 water/cementitious materials ratio without prior approval.
3. The addition of non-chlorinated admixtures is permitted.
4. The addition of Shrink Reducing Admixtures is not permitted.

E. Other admixtures may be used in the same concrete batch with Barrier-1 provided that such admixtures are added separately.

1. The water-to-cementitious material ratio (w/cm) is critical and it is imperative to comply with the mix design. Barrier-1 is used in lieu of that portion of the mix water, not in addition to the mix water.
2. Use of plasticizers or water reducers is recommended to achieve slumps greater than 4 inches.

3.2 CURING

- A. Barrier-i recommends the concrete be cured for a minimum of 24 hours after finishing operations are complete by placing minimum 2mil polyethylene plastic on the concrete slab.

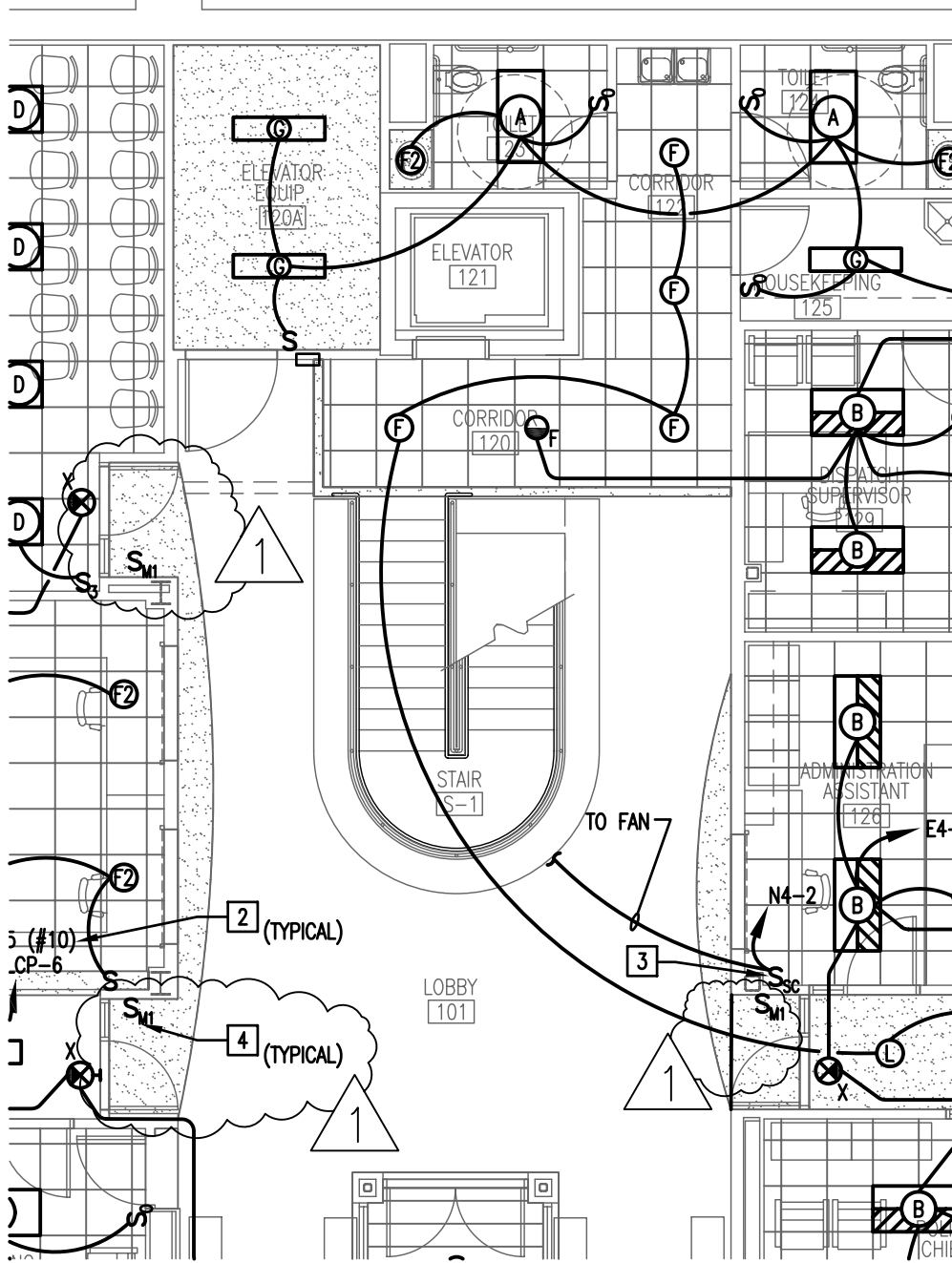
3.3 FIELD QUALITY CONTROL

- A. Testing of slabs containing Barrier-1 Waterproofing Admixture will be carried out by Barrier-1 to include, but not limited to: drilled sample cores and 4 inch cylinders on all project slabs. Samples will be taken from every concrete placement on every project. The sample cores and cylinders will be sent to an independent laboratory and tested for permeability. Results are for the purpose of internal quality control of Barrier-i admixture. The warranty will be issued to the (General Contractor/Construction Manager) within 30 days of concrete placement and no other testing is required for the installation of floor coverings.

3.4 REPAIRS

- A. Make repairs to slab in accordance with other Division 03 sections and as shown in manufacturer's published details.

END OF SECTION 03510



4 MOMENTARY SWITCH FOR TIMECLOCK OVERRIDE.

PARTIAL FIRST FLOOR LIGHTING PLAN

SCALE: 1/8" = 1'-0"



ADDENDUM 1
BP #4

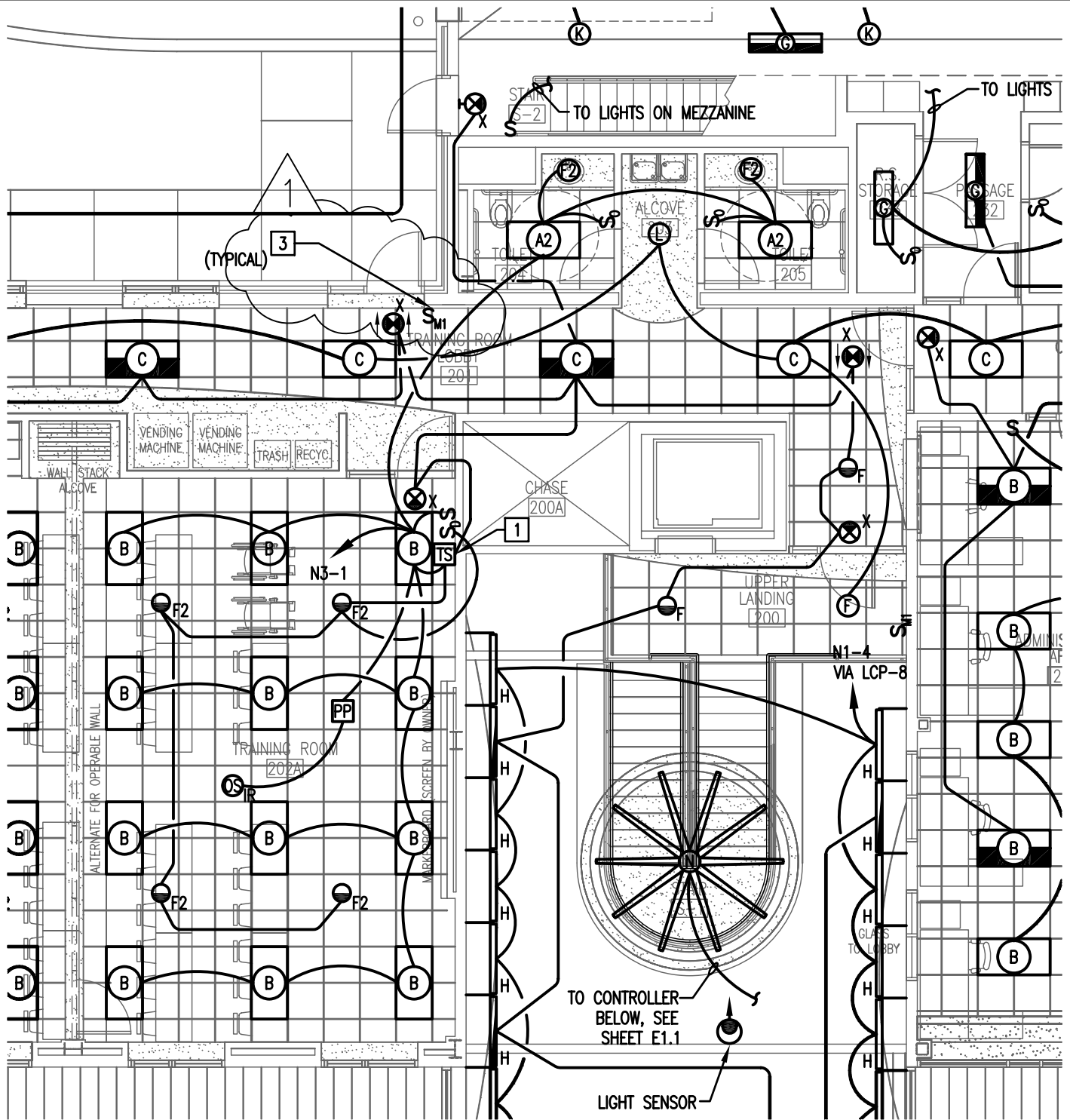


Date:
11-28-11
Project No.
100211

Project: CITY OF McCOOK
MUNICIPAL FACILITY
505 WEST "C" ST., McCOOK, NE.
SUPPLEMENTAL DRAWING

 Planning Architecture Engineering
Prochaska & Associates
Interiors & Facility Management
11317 Chicago Circle Omaha, Nebraska 68154-2633
Phone: (402) 334-0755 Fax: (402) 334-0868
E-Mail: mail@prochaska.us

Sheet:
E1.1a

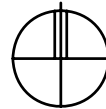


[3] MOMENTARY SWITCH FOR TIMECLOCK OVERRIDE.

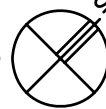
SECOND FLOOR LIGHTING PLAN

SCALE: 1/8" = 1'-0"

PLAN NORTH



ACTUAL NORTH



ADDENDUM 1
BP #4



Date:
11-28-11
Project No.
100211

Project: CITY OF McCOOK
MUNICIPAL FACILITY
505 WEST "C" ST., McCOOK, NE.
SUPPLEMENTAL DRAWING



Planning Architecture Engineering
Prochaska & Associates
Interiors & Facility Management
11317 Chicago Circle Omaha, Nebraska 68154-2833
Phone: (402) 334-0755 Fax: (402) 334-0868
E-Mail: mail@prochaska.us

Sheet:
E1.2a