



ADDENDUM NO. 1

1 of 12

Project: First United Methodist Church

Project No.: L09064.fum

Location: 2710 14th Street, Columbus, Ne

Date: November 4, 2011

This Addendum is issued by the Architect to all bidders of record prior to receipt of proposals. Bidders shall acknowledge receipt of this addendum by so indicating on the Proposal Form. Failure to do so may subject Bidder to disqualification.

All information and instructions given herein shall become a part of the Contract Documents.

GENERAL

1. See attachments for consultant items.
2. The following Substitution Requests are approved for bidding:
 - a. Jeld-Wen Double Hung Aluminum Clad Wood Window
 - b. Manko 135 Series
 - c. Manko 2405 FS Series
 - d. Everguard TPO Single Ply Roof System
 - e. Everguard Freedom HW Roof System
 - f. Daybar Industries Limited HM Frames
 - g. Certainteed Ceiling – Ecophon DG 3542 1561 & 3542 1565
 - h. Hurd Windows Double Hung Aluminum Clad Wood Window
3. Snow Guards: For typical layout, see attachment. This is for bidding purposes only. Layout and installation to be completed in accordance with manufacturer's written specification and installation instruction.

DRAWINGS

1. Sheet A4.1
 - A. Detail P1 – ATTIC MECH PENTHOUSE CEILING DETAIL
 - i. For walls in attic substitute wall type A1 with wall type F3.
2. See included dimensioned plan of existing church to determine Sprinkler layout.
3. See included original construction drawings for the existing church to determine Sprinkler layout.

END OF ADDENDUM

BAHR VERMEER HAECKER ARCHITECTS

440 NORTH 8TH STREET STE 100
1425 JONES STREET

LINCOLN NE 68508
OMAHA NE 68102

402 475 4551
402 345 3060

bvh.com



DATE ISSUED November 3, 2011

ADDENDUM # 1

ENGINEER Engineering Technologies, Inc.
825 M Street, Suite 200
Lincoln, NE 68508

PROJECT First United Methodist Church - Columbus

ETI PROJECT # 2007-145

The Architect issues this Addendum to all known bidders before receipt of proposals. Bidder shall acknowledge the receipt of this addendum on their proposal sheet and all information contained herein shall become a part of the contract documents.

ADDENDUM:

PRIOR APPROVAL – MECHANICAL

1. The following manufacturers have received prior approval for bidding purposes subject to shop drawing review:

- A. Louvers Greenheck, SAFE-AIR / Dowco, ABI
B. Variable Frequency Drives ABB, Yaskawa
C. Registers, Grilles, Diffusers Nailor, Tuttle & Bailey, Price
D. Auto Flow Control Valves Nexus, Flow Design
E. Air Separator B&G, Thrush, Armstrong
F. Circuit Setters B&G, Flow Design
G. Dampers ABI, United Enertech
H. Hoods Penn Barry, Loren Cook
I. Heat Pumps Carrier
J. Pump Accessories Patterson, Armstrong
K. Pumps Patterson
L. Glycol Feed System GTP
M. Boilers Riverside Hydronics
N. Plumbing Fixtures Zurn, Elkay, Watts

DRAWINGS – MECHANICAL

- 1. Sheet M3.1 Mechanical Equipment Schedule
A. Item #6, Energy Recovery Ventilator (ERV-1) shall have integral variable frequency drives provided on the supply air and exhaust air blowers to reduce the air flow during weekday hours.

PRIOR APPROVAL - ELECTRICAL

1. The following manufacturers have received prior approval for bidding purposes subject to shop drawing review:

- A. Light Fixture #1 Columbia Lighting
B. Light Fixture #2 Columbia Lighting
C. Light Fixture #3 Columbia Lighting
D. Light Fixture #4 Columbia Lighting
E. Light Fixture #5 Kenall
F. Light Fixture #6 Columbia Lighting
G. Light Fixture #7 Columbia Lighting
H. Light Fixture #8 Columbia Lighting
I. Light Fixture #9 Columbia Lighting
J. Light Fixture #10 Dual-Lite
K. Light Fixture #11 Dual-Lite
L. Light Fixture #12 Kenall

M. Light Fixture #13	Prescolite
N. Light Fixture #14	Prescolite
O. Light Fixture #15	Prescolite
P. Light Fixture #16	Prescolite
Q. Light Fixture #17	Columbia Lighting
R. Light Fixture #18	Columbia Lighting
S. Light Fixture #19	Camman Industries Inc., Advent Lighting/SPI
T. Light Fixture #21	Brownlee
U. Light Fixture #20	Kenall
V. Light Fixture #22	Kenall
W. Light Fixture #23	Columbia Lighting

DRAWINGS – ELECTRICAL

1. Sheet E 4.1 Panel Schedules
 - A. The minimum AIC ratings of the panels shall be as follows:

Panel MD	42 KAIC
Panel 01	22 KAIC
Panel 02	22 KAIC
Panel 03	22 KAIC
Panel 04	22 KAIC
Panel 05	22 KAIC

END OF ADDENDUM

Our Standard Safe Spacing Recommendations

Friday, November 04, 2011 e-mail # 110654

Greg Munn
 BVH ARCHITECTS
 440 N 8th Street - Ste 100
 Lincoln NE 68508

Telephone: 402--475-4551
 e-mail: gmunm@bvh.com

Re: Columbus FUM Church Remodel
 Columbus, NE

We recommend the following
 for a 6/12 slope, with a
 rafter length of 29 feet,
 asphalt-shingle roof.

Start 3 feet from eaves.

Horizontally 1st row 3 feet apart,
 Horizontally 2nd row 3 feet higher,
 Horizontally 3rd row 3 feet higher,
 Horizontally 4th row 3 feet higher.

Continue in increments of 3 feet to within 5 feet of the ridge at top.

Staggered course to course.

If the length of the building is 55 feet long, then 18 snow guards will be needed per row.

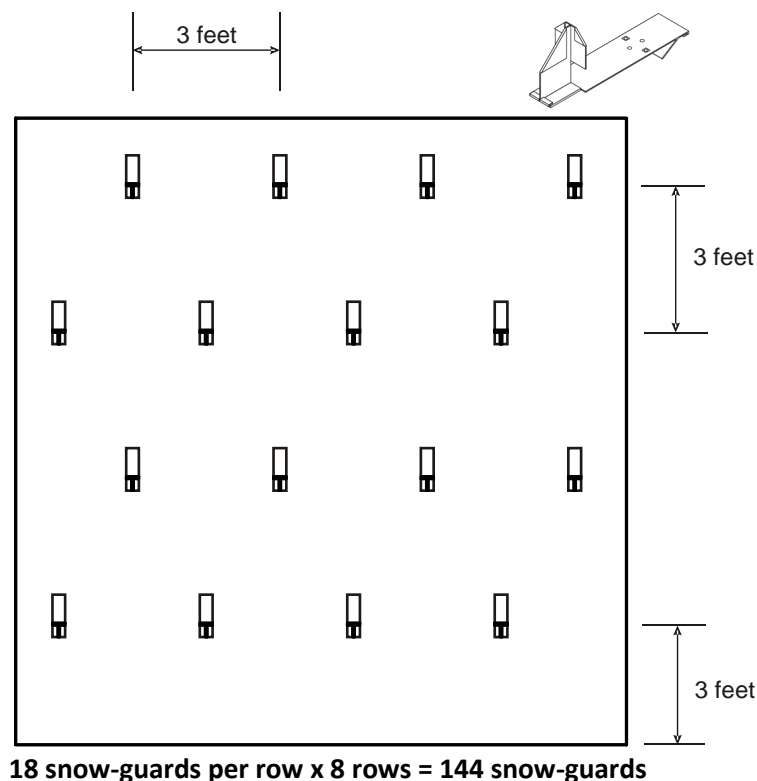
The rafter length being 29 feet, and 8 rows are suggested, then
 $18 \times 8 = 144 \div 2 = 72$ per side $\times 4$ sides = 288 snow guards.

Looking upward from the ground each vertical row would have 4 snow-guards.
 Looking upward from the ground each vertical row spacing would be 6 feet apart.

Snow has to be held in place to keep from starting to slide, not
 trying to stop it at the eaves once it gathers momentum.

Very truly yours,
 ZALESKI SNOW-GUARDS

Joseph Zaleski

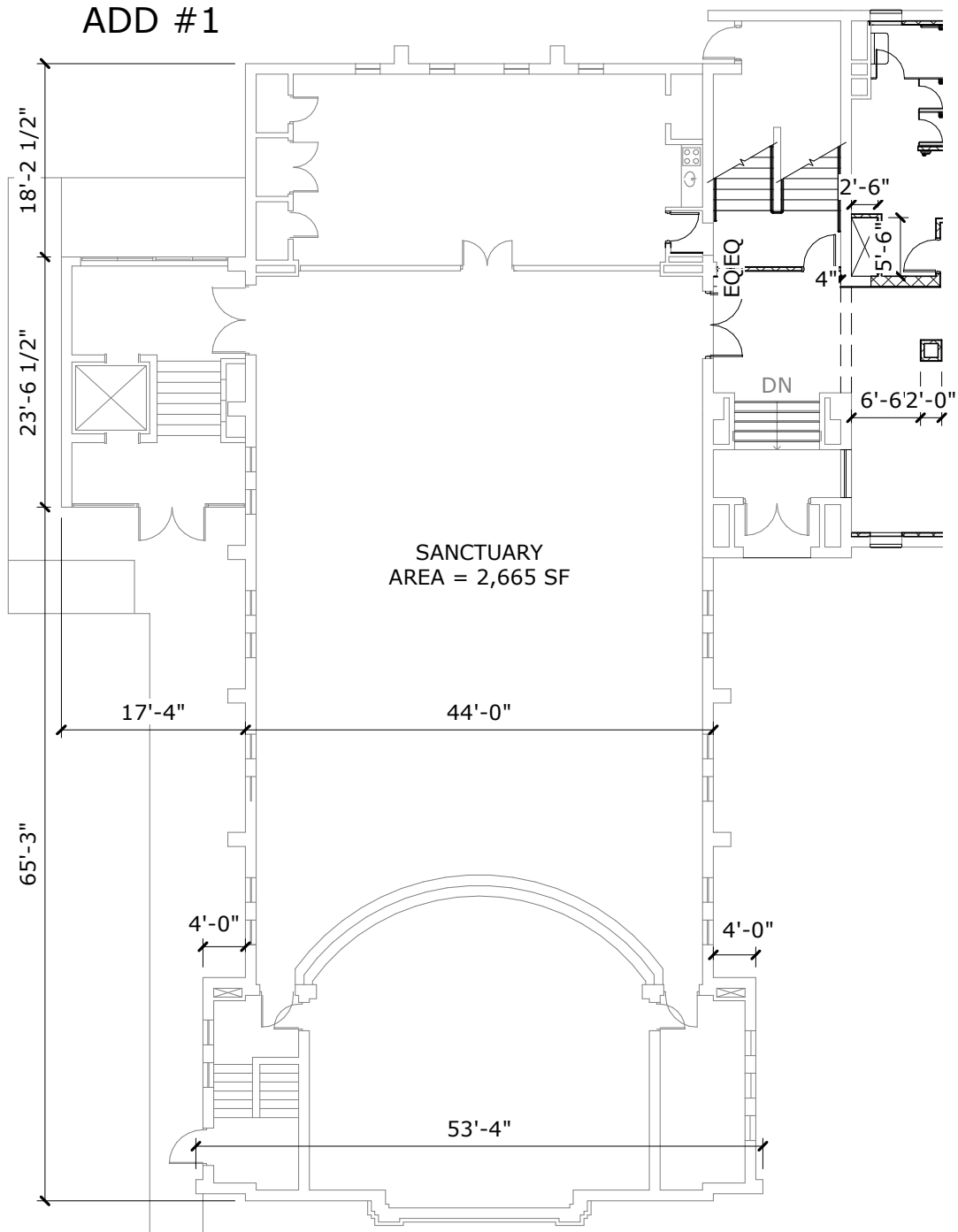


NOTE: We
 figured each side
 as a rectangle
 therefore divided
 by 2 for answer.



FIRST UNITED
METHODIST CHURCH
EAST WING
RENOVATIONS

ASI NO.:
 ADDENDUM NO.: 1
 CHANGE PROPOSAL REQUEST NO.:
 R.F.I REQUEST NO.:
 PROJECT: L09064
 DATE: 4 NOVEMBER 2011



1 EXISTING BUILDING FIRST FLOOR PLAN

1/16" = 1'-0"

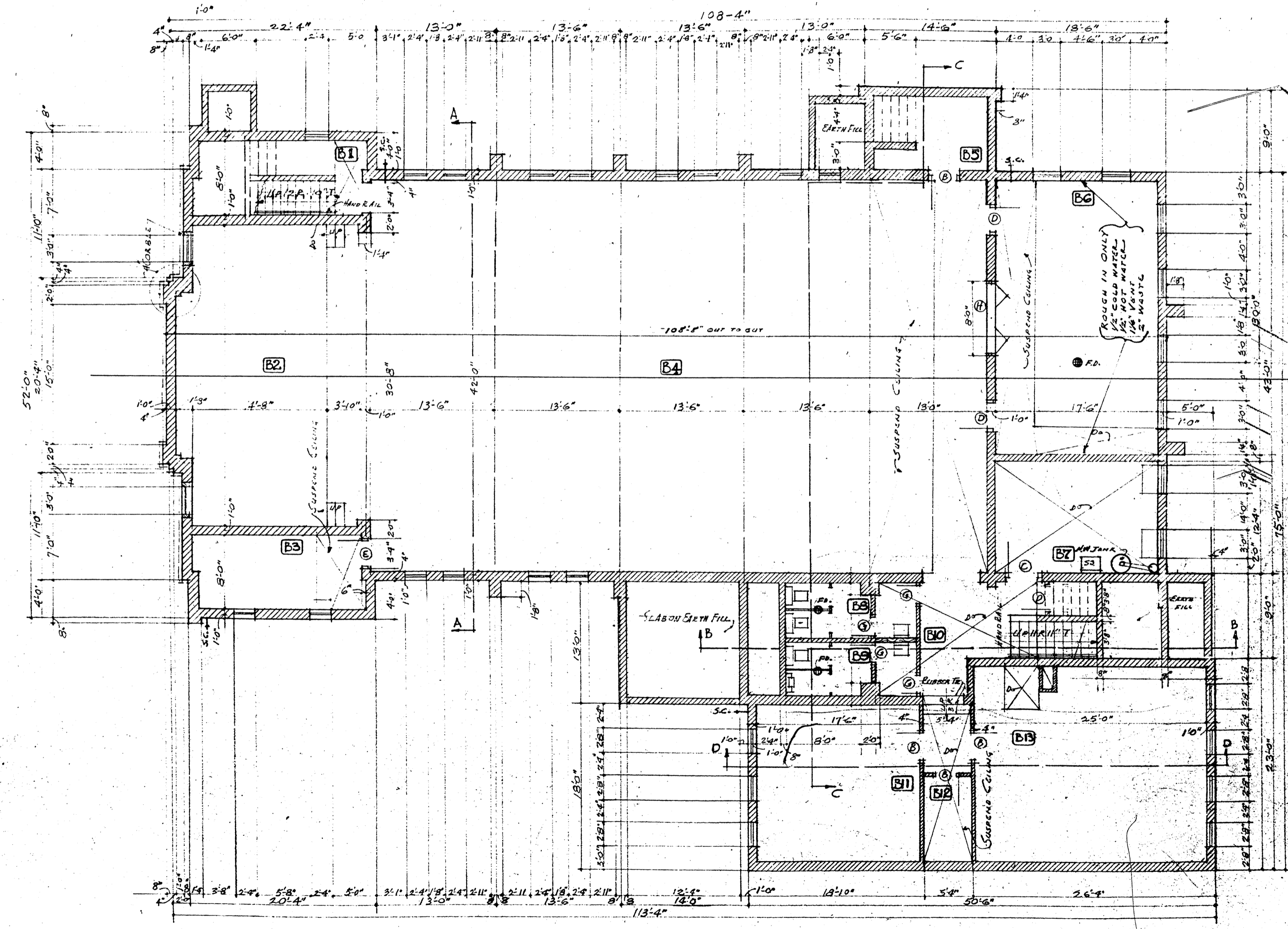
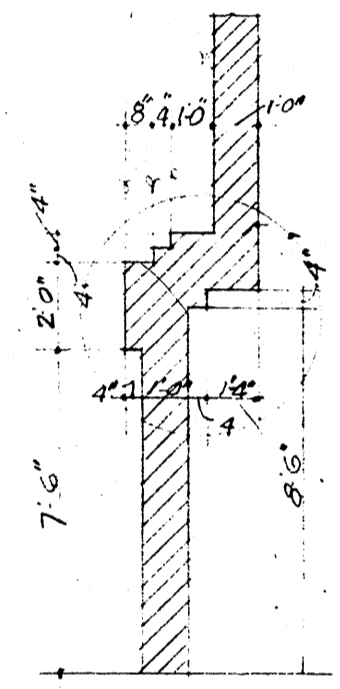
BAHR VERMEER HAECKER ARCHITECTS

440 N 8TH ST STE 100
bvh.com

LINCOLN NE 68508

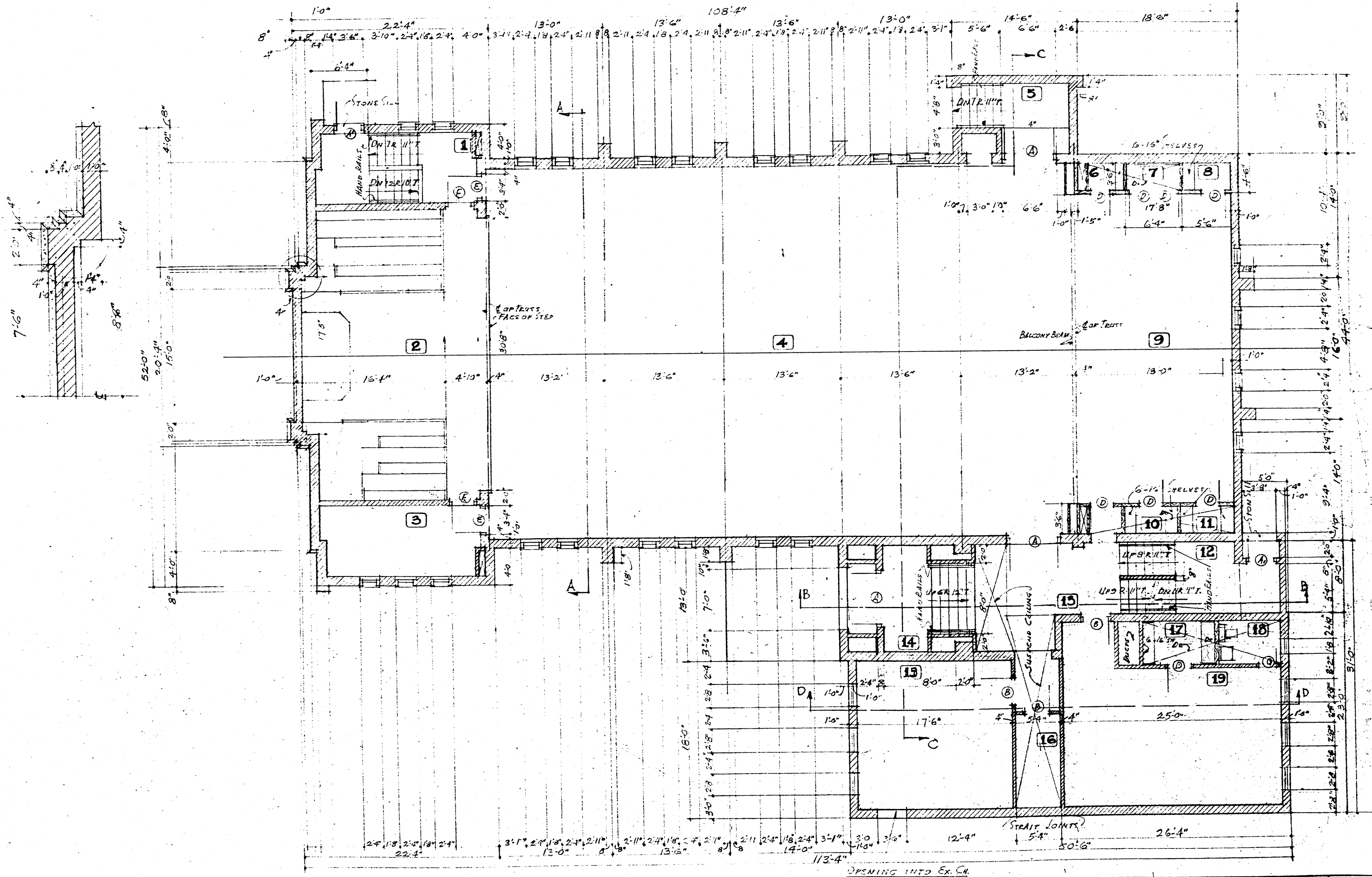
V 402 475 4551

F 402 475 0226



GROUND FLOOR PLAN 1/8"=1'-0"

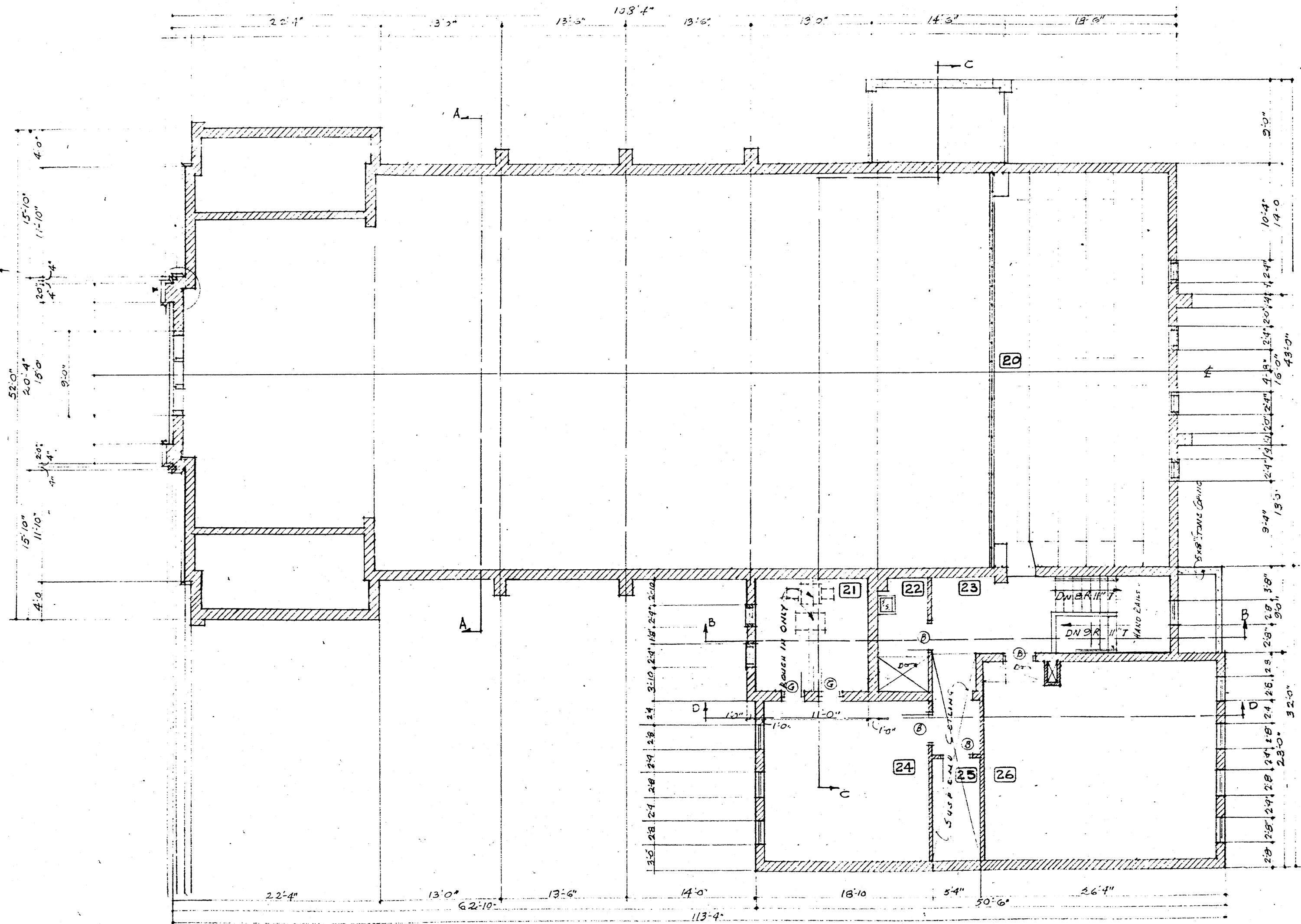
FIRST METHODIST CHURCH COLUMBUS, NEBR.	FRITZ CRAIG JACK BEERS ARCHITECTS LINCOLN, NEBRASKA	DATE	1-23-58
		SHEET	6



FIRST FLOOR PLAN - 1/8" = 10"

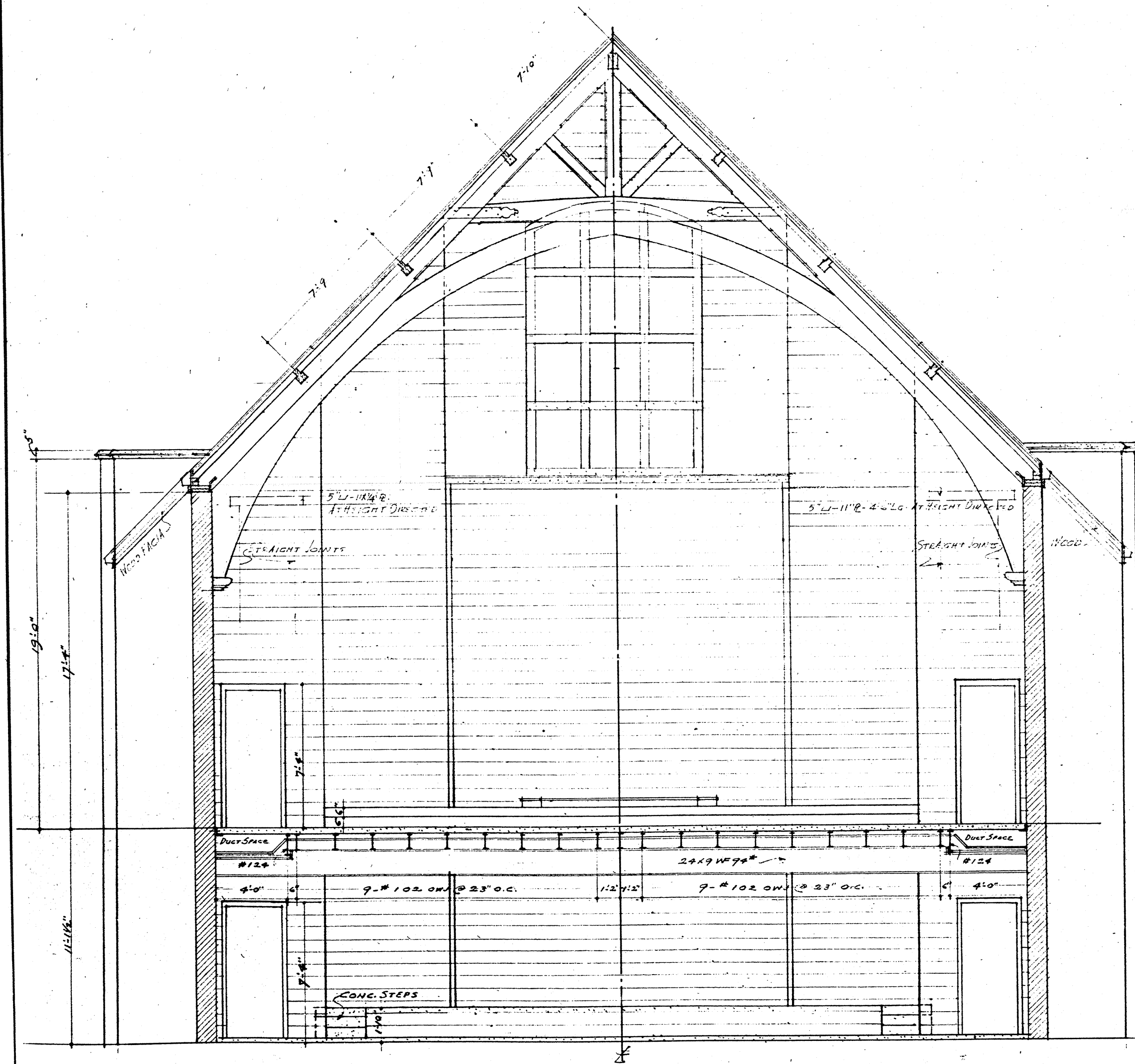
FIRST METHODIST CHURCH COLUMBUS, NEBR.	FRITZ CRAIG JACK BEERS ARCHITECTS LINCOLN, NEBRASKA		DATE 7.23.13
			SHEET 7

7'-5" 20' 10" A
 LINE OF WATER TABLE 2'-11"
 8'-4" 10'-10"



SECOND FLOOR & BALCONY PLAN 1/8"=1'-0"

FIRST METHODIST CHURCH COLUMBUS, NEBR.	FRITZ CRAIG JACK BEERS ARCHITECTS LINCOLN, NEBRASKA	DATE
		7-23-58
		SHEET
		8

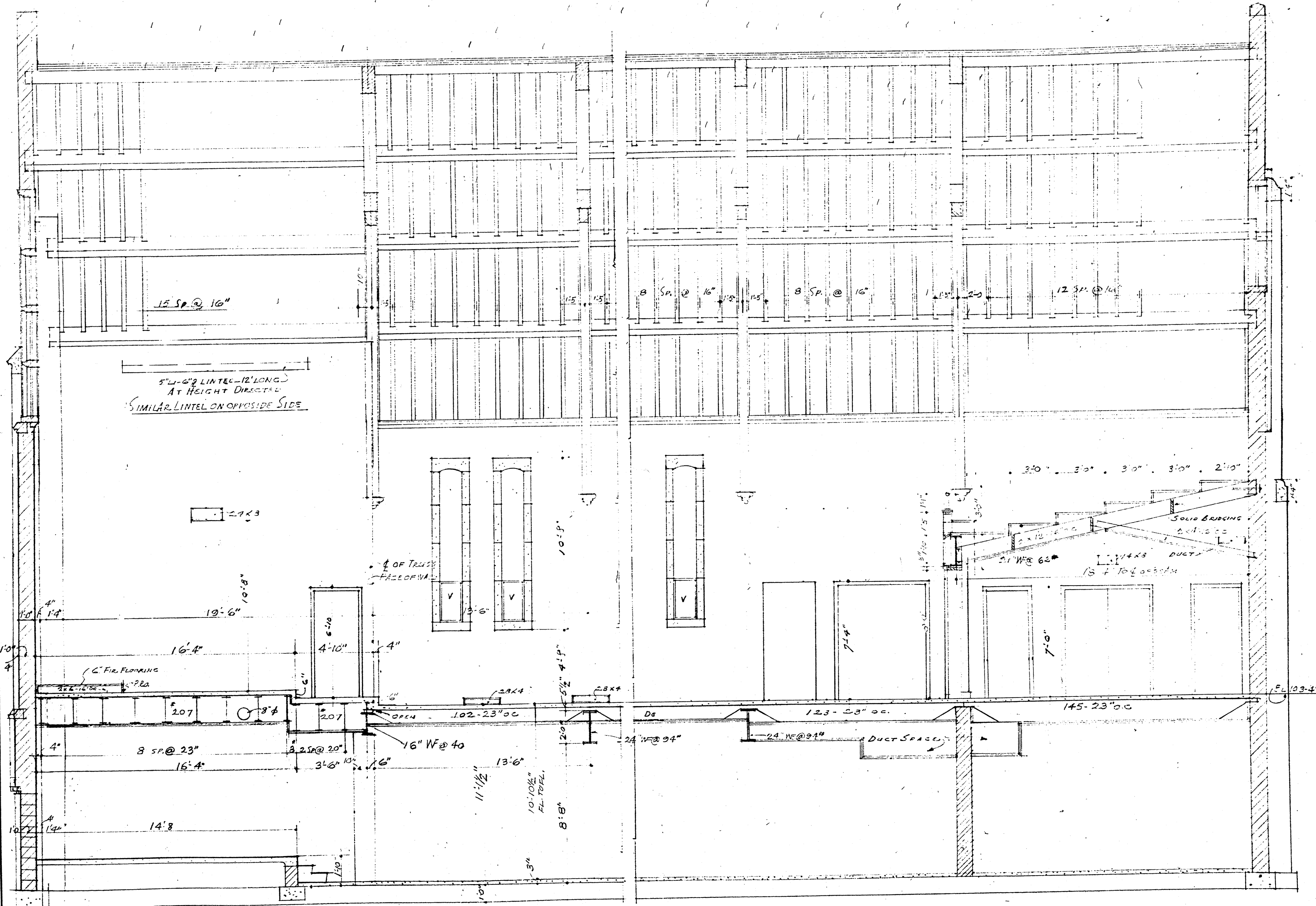


SECTION ON LINE AA 1/4"=1'-0"

ROOM NUMBER	FLOORS		BASE/WALLS	CEILING	PAINTING	
	FLOOR	CEILING	WALL	CEILING	WALL	CEILING
B1						
B2						
B3						
B4						
B5						
B6						
B7						
B8						
B9						
B10						
B11						
B12						
B13						
B14						
B15						
B16						
B17						
B18						
B19						
B20						
B21						
B22						
B23						
B24						
B25						
B26						

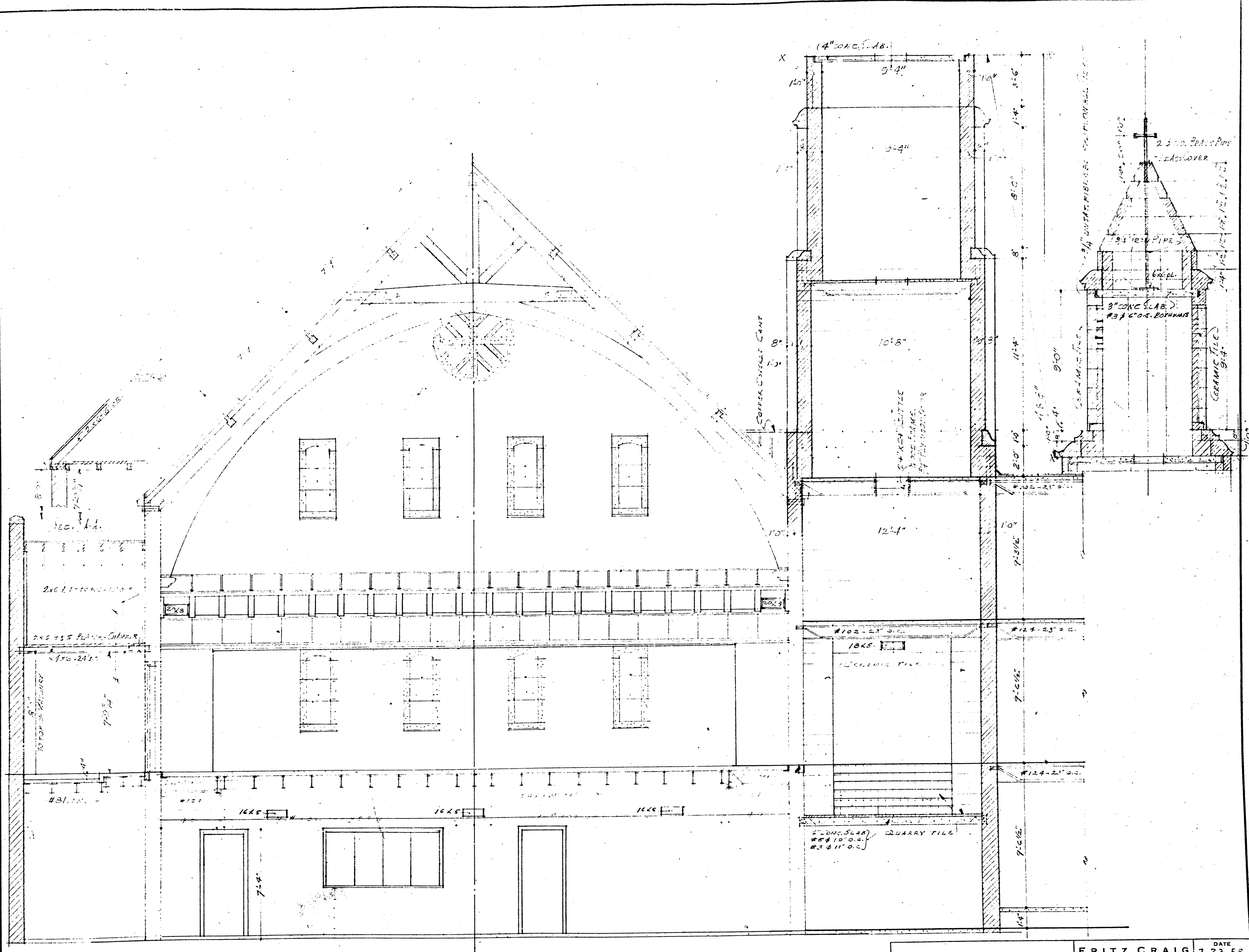
* B6-FLOOR - GREASE PROOF ASP TILE

FIRST METHODIST CHURCH COLUMBUS, NEBR.	FRITZ CRAIG JACK BEERS ARCHITECTS LINCOLN, NEBRASKA	DATE 7.23.53
		SHEET 9



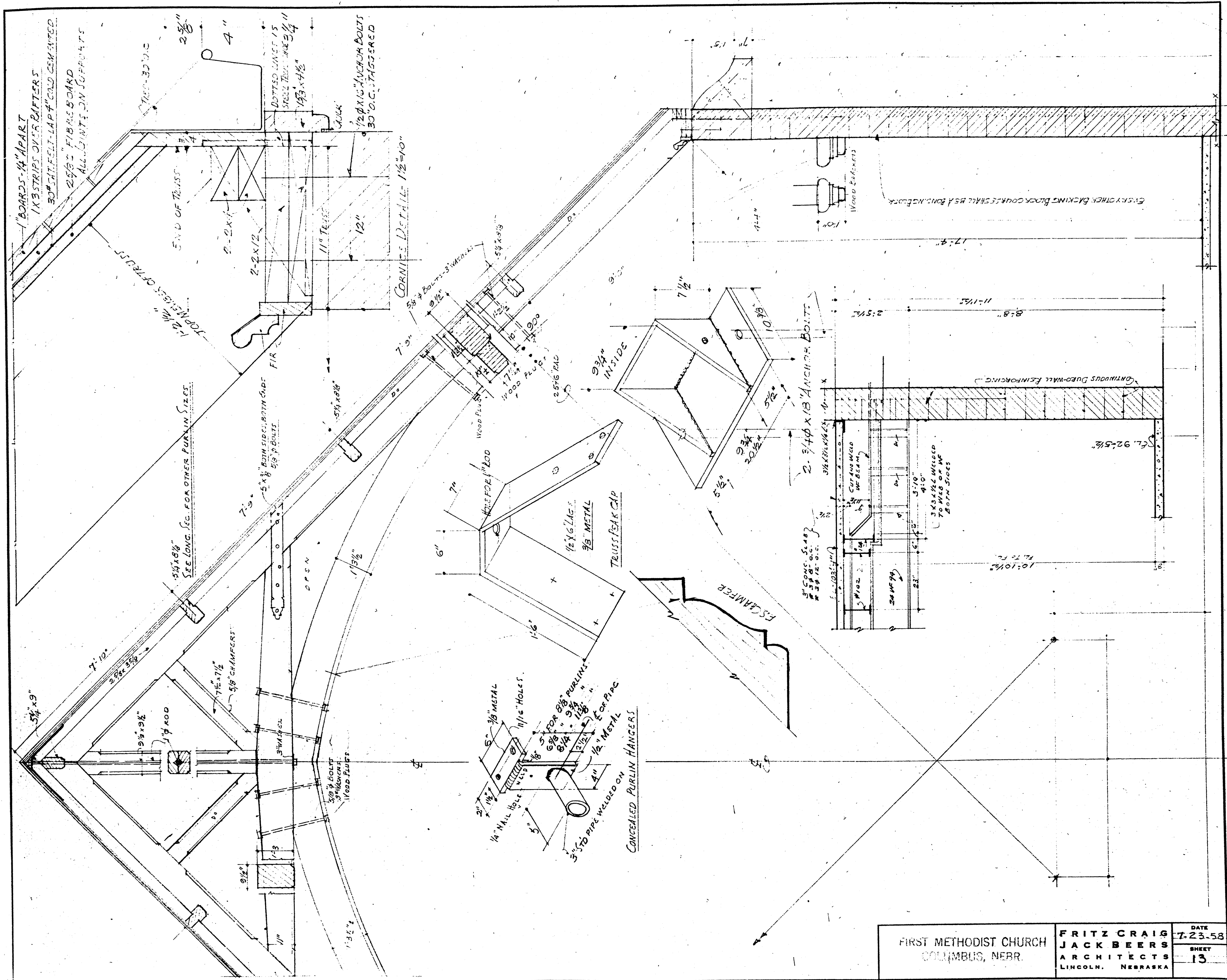
LONGITUDINAL SECTION ON $\phi - 14'' = 10''$

FIRST METHODIST CHURCH COLUMBUS, NEBR.	FRITZ CRAIG JACK BEERS ARCHITECTS LINCOLN, NEBRASKA	DATE 7-23-53
		SHEET 10



SECTION ON LINE GC 1/4"=1'-0"

FIRST METHODIST CHURCH COLUMBUS, NEBR.	FRITZ CRAIG JACK BEERS ARCHITECTS LINCOLN, NEBRASKA	DATE 7.23.55
		SHEET 11



FIRST METHODIST CHURCH COLUMBUS, NEBR.	FRITZ CRAIG JACK BEERS ARCHITECTS LINCOLN, NEBRASKA	DATE	7-23-58
		SHEET	13