

Addendum 03

Date: 05-22-2026
Project: 22011 – Spin Lofts
521 21st Ave
Council Bluffs, IA

This addendum is issued by the Owner to all known bidders prior to receipt of Proposal. Bidders shall acknowledge receipt of this Addendum by indicating so on the Proposal Form. All information and instruction given herein shall become a part of the Contract Documents.

This addendum contains the following information:

| | | |
|-----------------------------|----------|------------|
| Addendum Narrative | <u>1</u> | 8.5" x 11" |
| Drawing Sheets - Electrical | <u>6</u> | 30" x 42" |
| Total Sheets: | <u>7</u> | |

If this addendum appears incomplete, notify the Architect immediately.

ELECTRICAL DRAWINGS

1. Sheet E1.1: FLOOR PLANS – LEVELS 01 & 02 - ELECTRICAL
 - a. Revised location of unit entry light fixtures.
2. Sheet E1.2: FLOOR PLANS – LEVELS 03 & 04 - ELECTRICAL
 - a. Revised location of unit entry light fixtures.
 - b. Revise E14, trash enclosure plan to include gates at trash enclosure.
3. Sheet E3.1: ENLARGED UNITS PLANS - ELECTRICAL
 - a. At Unit Plan 1A, revise SOHO box location.
 - b. At Unit Plan 1B, revise SOHO box location and electrical outlet and switch by unit entry door.
 - c. At Unit Plan 2A, revise SOHO box location.
4. Sheet E3.2: ENLARGED UNITS PLANS - ELECTRICAL
 - a. At Unit Plan 1C, revise SOHO box location.
 - b. At Unit Plan 2A, revise SOHO box location.
 - c. At Unit Plan 2B.1, revise light switch by unit entry door.
 - d. At Unit Plan 2C, revise light switch by unit entry door.
5. Sheet E3.2: ENLARGED UNITS PLANS - ELECTRICAL
 - a. At Unit Plan 2A.1, revise light switch by unit entry door.
6. Sheet E6.1: ELECTRICAL SCHEDULES
 - a. Revise light fixture 10 within the Luminaire Schedule.
 - b. Add note 4 to “Luminaire Schedule Notes”.

END OF ADDENDUM 03

GENERAL NOTES:

1. SEE ELECTRICAL COVER SHEET E0.0 FOR ELECTRICAL GENERAL NOTES.

KEYNOTES

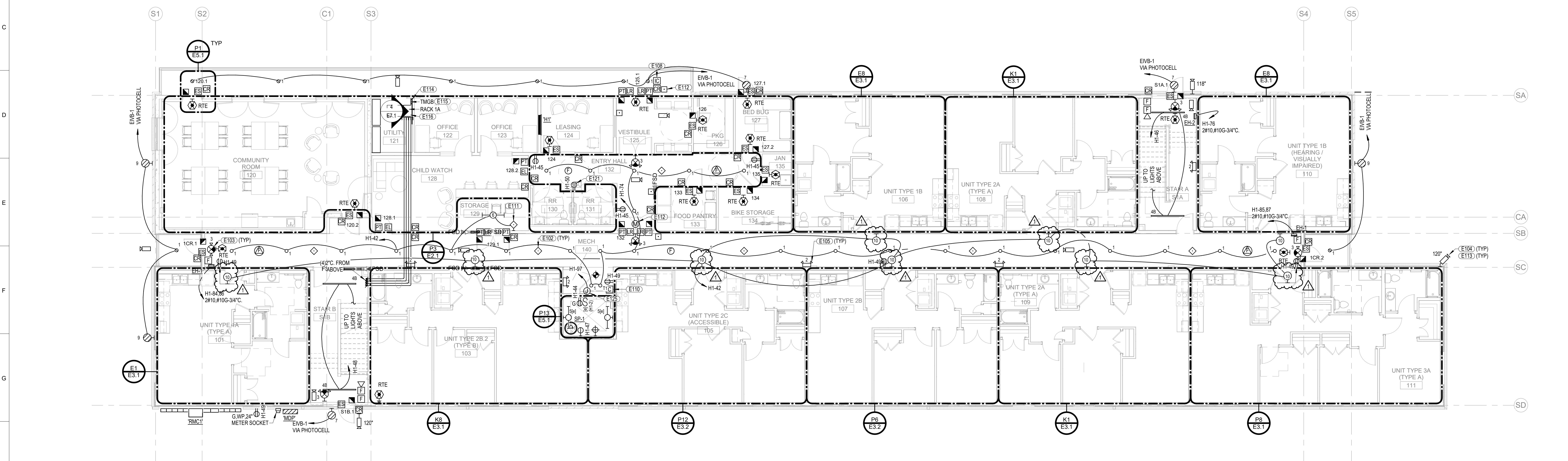
- E101 PROVIDE FINAL CONNECTION TO OWNER FURNISHED INTERNALLY. ILLUMINATED SIGNAGE. COORDINATE REQUIREMENTS WITH ARCHITECTURAL EXTERIOR ELEVATIONS AND SIGNAGE SUPPLIER PRIOR TO ROUGH IN. PROVIDE TOGGLE SWITCH/DISCONNECT CONCEALED WITHIN OR BEHIND SIGNAGE FOR POWER CONNECTIONS.
- E102 PROVIDE NEW CEILING MOUNTED OCCUPANCY SENSOR. ROUTE CIRCUIT THROUGH NEW POWER PACK WITH AUXILIARY RELAYS, CONTROLLED BY NEW OCCUPANCY SENSORS. PROVIDE AUXILIARY POWER PACKS AS REQUIRED. SEE SPECIFICATIONS AND OCCUPANCY SENSOR ROOM CONNECTION DETAIL FOR ADDITIONAL INFORMATION.
- E103 CONNECT EXIST LIGHTS TO DEDICATED CIRCUIT IN PANEL 'H1'. PROVIDE WITH LOCKABLE CIRCUIT BREAKER.
- E104 PROVIDE ROUGH IN FOR SECURITY CAMERA. PROVIDE 1" C. WITH PULL STRING FROM ROUGH IN TO IT ROOM. TERMINATE OPEN ENDS WITH INSULATING BUSHINGS. COORDINATE LOCATION WITH EQUIPMENT PROVIDER AND GENERAL CONTRACTOR PRIOR TO ROUGH IN.
- E105 CONNECT TO BRANCH CIRCUIT SERVING GENERAL LIGHTING IN SAME ROOM AS EMERGENCY LIGHT. CONNECT BATTERY SENSING LEADS AHEAD OF LOCAL SWITCHING.

KEYNOTES

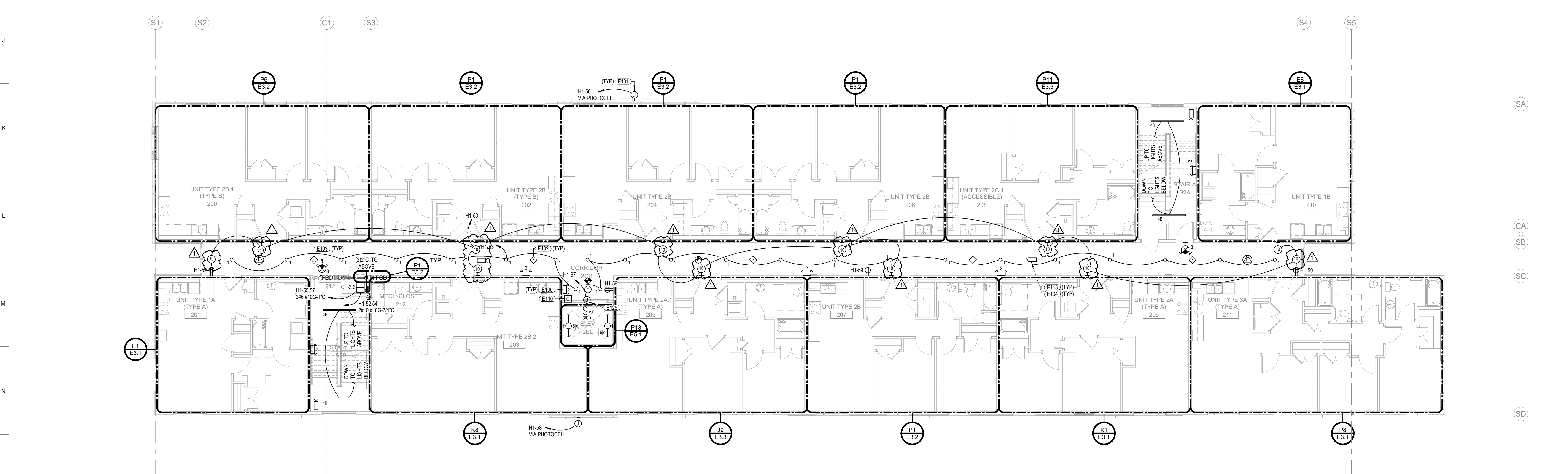
- E108 PROVIDE ROUGH IN FOR INTERCOM. PROVIDE 1" C. WITH PULL STRING FROM ROUGH IN TO IT ROOM. TERMINATE OPEN ENDS WITH INSULATING BUSHINGS. COORDINATE REQUIREMENTS AND LOCATION OF ROUGH IN AND CONDUIT ROUTING WITH EQUIPMENT PROVIDER AND GENERAL CONTRACTOR PRIOR TO ROUGH IN.
- E110 PROVIDE AREA OF REFUGE CALL STATION BY VIKING, JERON OR APPROVED EQUAL. PROVIDE ROUGH IN AT 48" A.F.F. AND CONDUIT PATHWAY AND TWO HOUR FIRE RATED CABLE FROM CALL STATION TO SYSTEM POWER SUPPLY AND MASTER CALL STATION. COORDINATE ROUGH IN LOCATION WITH ARCHITECT AND GENERAL CONTRACTOR TO ENSURE THAT ALL ASSOCIATED SIGNAGE IS LOCATED PROPERLY. COORDINATE REQUIREMENTS WITH EQUIPMENT MANUFACTURER PRIOR TO ROUGH IN.
- E111 PROVIDE LINE VOLTAGE WALL BOX OCCUPANCY SENSOR - SEE SPECIFICATIONS FOR ADDITIONAL INFORMATION.
- E112 PROVIDE FINAL CONNECTION TO AUTOMATIC ADA DOOR. INSTALL ALL COMPONENTS PROVIDED WITH DOOR OPERATOR, INCLUDING BUT NOT LIMITED TO ACTUATORS, PUSHBUTTONS, TRANSFORMERS, ETC. PROVIDE FINAL CONNECTION THROUGH DOOR OPERATOR AND ASSOCIATED COMPONENTS. COORDINATE REQUIREMENTS WITH EQUIPMENT MANUFACTURER PRIOR TO ROUGH IN.

KEYNOTES

- E113 PROVIDE (1) DATA CABLE FOR CONNECTION TO SURVEILLANCE CAMERA. PROVIDE 27' SERVICE LOOP. TERMINATE WITH PLENUM RATED SURFACE BOX MOUNTED ABOVE ACCESSIBLE CEILING. PROVIDE PATCH CORD FOR CONNECTION TO CAMERA.
- E114 PROVIDE COMMUNICATIONS BACKBOARD ON WALLS INDICATED WITH HEAVY LINE TYPE. 3/4" A.C. GRADE A SIDE OUT, ALL SIDES PAINTED WITH 3 COATS OF WHITE FIRE RATED PAINT. MOUNT 8" TALL BOARD 9" ABOVE FLOOR.
- E115 PROVIDE COMMUNICATIONS GROUND BAR. 72" A.F.F.
- E116 LOCATION FOR SECURITY EQUIPMENT. ACCESS CONTROL DOOR CONTROLLERS AND POWER SUPPLIES. COORDINATE EXACT LOCATION WITH ARCHITECT AND TELECOM PROVIDER PRIOR TO INSTALLATION.
- E121 LOCATE RECEPTACLE FOR WATER COOLER SO THAT CORD AND PLUG ARE CONCEALED INSIDE OR BEHIND WATER COOLER. PROVIDE GFCI BREAKER IN PANEL INDICATED.
- E125 PROVIDE ELECTRICAL CONNECTION FIRE SMOKE DOOR AND PROVIDE FIRE ALARM CONNECTION PER MANUFACTURERS REQUIREMENTS.



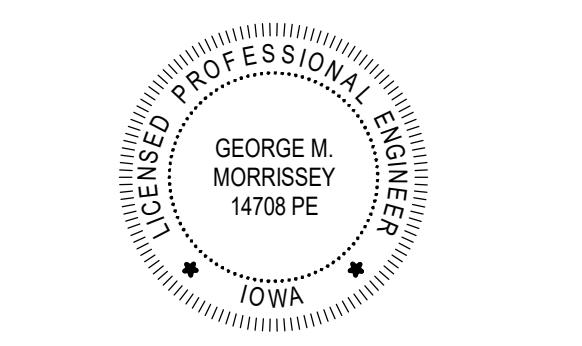
H1 FLOOR PLAN - LEVEL 01 - ELECTRICAL
E1.1 SCALE: 1/8" = 1'-0"



P1 FLOOR PLAN - LEVEL 02 - ELECTRICAL
E1.1 SCALE: 1/8" = 1'-0"

AGENCY APPROVAL
 MEI PROJECT #: 25536
morrissey engineering inc.
 mechanical | electrical | lighting | technology | sustainability
 4840 North 110th
 Street Omaha, NE
 68164 P: 402.491.4144
 Nebraska CCA Number: CA-0835
 © copyright www.morrisseyengineering.com
 permission to reproduce all or part of this drawing is hereby granted solely for the limited purpose of construction of this project or archiving. unauthorized copying, disclosure or construction use without written permission of morrissey engineering, inc. is prohibited by copyright law.
 do not scale drawings. verify all dimensions and clearances from architectural, structural, shop and other appropriate drawings or at site. lay out and coordinate all work prior to installation to provide clearances required for operation, maintenance, and codes and verify non-interference with other work. do not fabricate prior to verification of clearance for all trades.

ALLEY POYNER
MACCHIETTO
ARCHITECTURE



ADD 03 05/22/2026

| REVISION | DATE |
|------------------|--------------|
| Project Number: | 22011 |
| Date: | May 01, 2026 |
| COPYRIGHT © 2026 | |

FLOOR PLANS - LEVELS 01 & 02 - ELECTRICAL

E1.1

GENERAL NOTES:

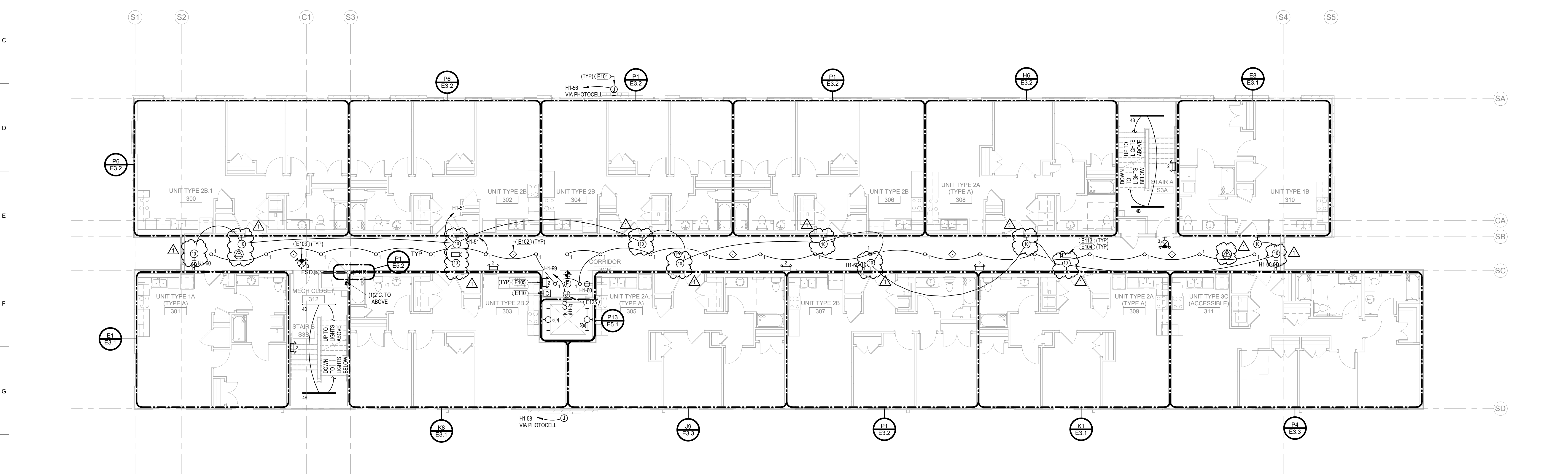
1. SEE ELECTRICAL COVER SHEET E0.0 FOR ELECTRICAL GENERAL NOTES.

KEYNOTES

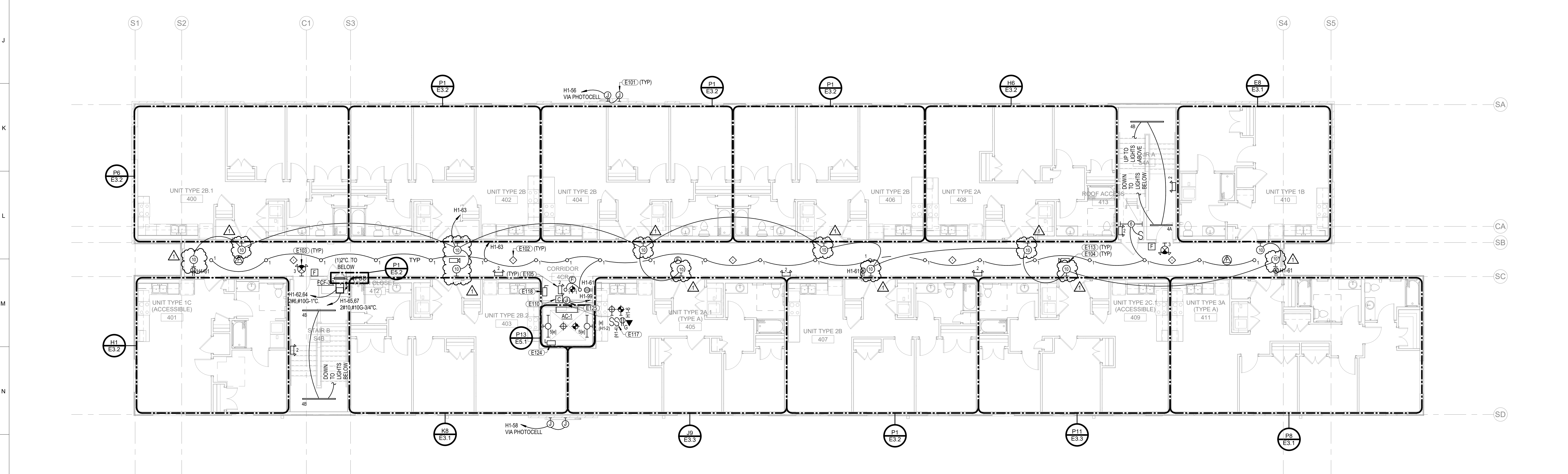
- E101 PROVIDE FINAL CONNECTION TO OWNER FURNISHED INTERNALLY ILLUMINATED SIGNAGE. COORDINATE REQUIREMENTS WITH ARCHITECTURAL EXTERIOR ELEVATIONS AND SIGNAGE SUPPLIER PRIOR TO ROUGH IN. PROVIDE TOGGLE SWITCH DISCONNECT CONCEALED WITHIN OR BEHIND SIGNAGE FOR POWER CONNECTIONS.
- E102 PROVIDE NEW CEILING MOUNTED OCCUPANCY SENSOR. ROUTE CIRCUIT THROUGH NEW POWER PACK WITH AUXILIARY RELAYS, CONTROLLED BY NEW OCCUPANCY SENSORS. PROVIDE AUXILIARY POWER PACKS AS REQUIRED. SEE SPECIFICATIONS AND OCCUPANCY SENSOR ROOM CONNECTION DETAIL FOR ADDITIONAL INFORMATION.
- E103 CONNECT EXIT LIGHTS TO DEDICATED CIRCUIT IN PANEL H1. PROVIDE WITH LOCKABLE CIRCUIT BREAKER.
- E104 PROVIDE ROUGH IN FOR SECURITY CAMERA. PROVIDE 1" WITH PULL STRING FROM ROUGH IN TO IT ROOM. TERMINATE OPEN ENDS WITH INSULATING BUSHINGS. COORDINATE LOCATION WITH EQUIPMENT PROVIDER AND GENERAL CONTRACTOR PRIOR TO ROUGH IN.
- E105 CONNECT TO BRANCH CIRCUIT SERVING GENERAL LIGHTING IN SAME ROOM AS EMERGENCY LIGHT. CONNECT BATTERY SENSING LEADS AHEAD OF LOCAL SWITCHING.

KEYNOTES

- E110 PROVIDE AREA OF REFUGE CALL STATION BY VIKING, JERON OR APPROVED EQUAL. PROVIDE ROUGH IN AT 48" A.F.F. AND CONDUIT PATHWAY AND TWO HOUR FIRE RATED CABLE FROM CALL STATION TO SYSTEM POWER SUPPLY AND MASTER CALL STATION. COORDINATE ROUGH IN LOCATION WITH ARCHITECT AND GENERAL CONTRACTOR TO ENSURE THAT ALL ASSOCIATED SIGNAGE IS LOCATED PROPERLY. COORDINATE REQUIREMENTS WITH EQUIPMENT MANUFACTURER PRIOR TO ROUGH IN.
- E113 PROVIDE (1) DATA CABLE FOR CONNECTION TO SURVEILLANCE CAMERA. PROVIDE 2" SERVICE LOOP. TERMINATE WITH PLENUM RATED SURFACE BOX MOUNTED ABOVE ACCESSIBLE CEILING. PROVIDE PATCH CORD FOR CONNECTION TO CAMERA.
- E117 PROVIDE LOCKABLE SWITCH FOR ELEVATOR CAB LIGHTS PER NEC 620.
- E118 ELEVATOR DISCONNECT SWITCH. SEE POWER RISER DIAGRAM FOR ADDITIONAL INFORMATION.
- E124 ELEVATOR NONFUSED DISCONNECT. SEE RISER DIAGRAM.
- E125 PROVIDE ELECTRICAL CONNECTION FIRE SMOKE DOOR AND PROVIDE FIRE ALARM CONNECTION PER MANUFACTURERS REQUIREMENTS.



H1 FLOOR PLAN - LEVEL 03 - ELECTRICAL
E1.2 SCALE: 1/8" = 1'-0"



P1 FLOOR PLAN - LEVEL 04 - ELECTRICAL
E1.2 SCALE: 1/8" = 1'-0"

AGENCY APPROVAL

MEI PROJECT #: 25536

morrissey engineering inc
mechanical | electrical | lighting | technology | sustainability
4840 North 110th
Omaha, NE
68164 P: 402.481.4144
Nebraska CCA Number: CA-0535
© copyright www.morrisseyengineering.com

permission to reproduce all or part of this drawing is hereby granted solely for the limited purpose of construction of this project or archiving. unauthorized copying, disclosure or construction use without written permission of morrissey engineering, inc. is prohibited by copyright law.

note:
do not scale drawings. verify all dimensions and clearances from architectural, structural, shop and other appropriate drawing or at site. lay out and coordinate all work prior to installation to provide clearances required for operation, maintenance, and codes and verify non-interference with other work. do not fabricate prior to verification of clearance for all trades.

ALLEY POYNER
MACCHIETTO
ARCHITECTURE



ADD 03 05/22/2026

| REVISION | DATE |
|------------------|--------------|
| Project Number: | 22011 |
| Date: | May 01, 2026 |
| COPYRIGHT © 2026 | |

FLOOR PLANS - LEVELS 03 & 04 - ELECTRICAL

GENERAL RESIDENTIAL UNITS TYPICAL NOTES

- CONNECT RECEPTACLE SERVING DWELLING UNIT REFRIGERATOR TO ONE OF THE SMALL-APPLIANCE CIRCUITS, PROTECTED BY UPSTREAM GFI DEVICE. DO NOT PROVIDE GFI RECEPTACLE FOR REFRIGERATOR.
- MINIMUM SIZE FOR BRANCH CIRCUIT CONDUITS SHALL BE 1/2"
- UNITS INDICATED ARE TYPICAL. COORDINATE RECEPTACLE LOCATIONS WITH ACTUAL FIELD MEASUREMENTS TO COMPLY WITH NEC SPACING REQUIREMENTS. VERIFY KITCHEN APPLIANCE LOCATIONS WITH OWNER AND ADJUST ACCORDINGLY.
- PROVIDE AFCI TYPE CIRCUIT BREAKER OR DEVICE (WHERE NEUTRALS ARE SHARED) FOR ALL 120 VOLT, SINGLE PHASE, 15- AND 20-AMPERE BRANCH CIRCUITS AS REQUIRED BY NEC.
- PROVIDE GFCI TYPE RECEPTACLES FOR ALL 120 VOLT, SINGLE PHASE, 15- AND 20-AMPERE RECEPTACLES PER NEC 210.8. PROVIDE GFCI TYPE RECEPTACLES FOR ALL RECEPTACLES INSTALLED WITHIN 6'-0" OF WATER, PER NEC 210.8.9.
- PROVIDE TAMPER RESISTANT RECEPTACLES PER NEC 408.12. TAMPER RESISTANT RECEPTACLES ARE NOT INDICATED ON THE DRAWINGS.
- MINIMUM SIZE FOR BRANCH CIRCUIT WIRING SHALL BE #12 AWG FOR 20 AMP CIRCUITS AND #14 FOR 15 AMP CIRCUITS.
- COORDINATE FINAL DEVICE AND FIXTURE ROUGH-IN LOCATIONS WITH OWNER. ANY INSTALLATION DEVIATION BETWEEN DRAWINGS AND ACTUAL LOCATIONS SHALL BE COORDINATED WITH OWNER/ARCHITECT PRIOR TO ROUGH-IN.
- ALL KITCHEN RECEPTACLES SHALL BE GFI TYPE PER NEC 210.8.
- VERIFY RECEPTACLE MOUNTING HEIGHTS WITH FINAL CASEWORK AND UNIT FINISH DRAWINGS.
- VERIFY FINAL LOCATION OF WASHER/DRYER PRIOR TO ROUGH-IN. COORDINATE WITH GENERAL CONTRACTOR AND MECHANICAL CONTRACTOR.
- GANG ADJACENT DEVICES WHERE POSSIBLE.
- SEE "APARTMENT UNIT ELECTRICAL SYMBOLS" ON THIS SHEET FOR ADDITIONAL INFORMATION.
- DO NOT MOUNT DEVICES BACK-TO-BACK.
- SMOKE DETECTORS SHALL NOT BE INSTALLED WITHIN 36" OF AN HVAC DIFFUSER OR RETURN AIR GRILLE PER NFPA 72.
- ALTERNATE KITCHEN SMALL APPLIANCE RECEPTACLE CIRCUITS BETWEEN TWO BRANCH CIRCUITS INDICATED PER OMAHA MUNICIPAL CODE.
- PROVIDE COMBINATION "AFCI/GFCI" TYPE BREAKERS FOR ALL 120 VOLT, SINGLE PHASE, 15- AND 20-AMPERE RECEPTACLES PER NEC 210.8 AND 210.12 WHERE RECEPTACLE IS NON-ACCESSIBLE.

KEYNOTES

- E301 RECEPTACLE FOR DISHWASHER. SEE DETAIL P063.1 FOR MORE INFORMATION. PRIOR TO ROUGH-IN, COORDINATE LOCATION OF RECEPTACLE AND CONDUIT WITH GENERAL CONTRACTOR AND OTHER TRADES TO AVOID CONFLICTS BETWEEN ELECTRICAL AND PLUMBING WORK.
- E302 RECEPTACLE SHALL BE CONNECTED AS FEED-THRU FROM ADJACENT GFCI.
- E303 CONNECT EXHAUST FAN TO BRANCH CIRCUIT SERVING LIGHT FIXTURES WITHIN SAME ROOM AS EXHAUST FAN. CONNECT EXHAUST FAN TO SWITCH INDICATED.
- E304 PROVIDE TELEPHONE/CATV TERMINAL BOX, SUTLE SOHO ACCESS ENCLOSURE IMX6-106-102 (OR APPROVED EQUAL) INSTALL FLUSH IN WALL AT 36" AFF. PROVIDE DUPLEX RECEPTACLE INSIDE CABINET AND CIRCUIT TO NEAREST HALLWAY RECEPTACLE CIRCUIT. PROVIDE 1-1/4" CONDUIT CONCEALED TO NEAREST ACCESSIBLE CEILING SPACE OR COMMUNICATIONS ROOM. SEE DETAIL D1564.1.
- E305 PROVIDE SINGLE GANG CADDY RING FOR DATA ROUGH-IN.
- E306 PROVIDE 120V POWER CONNECTION TO IN-LINE CLOTHES DRYER BOOSTER FAN WHERE REQUIRED. VERIFY FAN LOCATION WITH MECHANICAL CONTRACTOR. PROVIDE SINGLE POLE TOGGLE SWITCH DISCONNECT AT FAN. COORDINATE SWITCH AND FAN ACCESS MEANS WITH GENERAL CONTRACTOR.
- E307 PROVIDE SYSTEM SMOKE DETECTORS WITHIN APARTMENT UNIT WITH LOW FREQUENCY SOLINGER BASE (SEE SPECIFICATIONS). INTERLOCK DETECTORS WITH UNIT PER NFPA REQUIREMENTS VIA PROGRAMMING. PROGRAM FIRE ALARM SYSTEM TO SHUT DOWN FAN COIL UNIT AND RESTROOM EXHAUST FAN IN THE EVENT OF ALARM CONDITION IN RESPECTIVE UNIT VIA FIRE ALARM RELAY.
- E308 FAN COIL PROVIDED WITH INTEGRAL DISCONNECT. CONNECT FAN COIL TO LOAD CENTER SERVING SAME UNIT AS FAN COIL. CONNECT FC-1.5 WITH 298.810G-34"C AND FC-2.0.2.5 WITH 298.810G-1"C. SEE PANEL SCHEDULES FOR ADDITIONAL INFORMATION. PROVIDE FIRE ALARM RELAY TO SHUT DOWN FAN COIL AND EXHAUST FAN IF SMOKE DETECTORS IN THE SAME UNIT ACTIVATE.
- E309 CONNECT WATER HEATER TO LOAD CENTER SERVING SAME UNIT AS WATER HEATER. CONNECT WITH 291#10G-10"C. SEE PANEL SCHEDULES FOR ADDITIONAL INFORMATION. PROVIDE LOCKABLE CIRCUIT BREAKER TO SERVE AS DISCONNECTING MEANS.
- E310 IN ALL ACCESSIBLE UNITS PROVIDE A MASTER ON/OFF SWITCH IN A D.A. DESIGNATES UNITS LOCATED AT THE COUNTER LEVEL AT 44" FOR ADA OTR HOOD CONTROL.
- E311 PROVIDE FIRE ALARM VISUAL (STROBE) IN A D.A. DESIGNATED UNITS. SEE ARCHITECTURAL PLANS FOR REQUIRED ROOMS. PROVIDE STROBE BASE FOR SINGLE STATION SMOKE DETECTORS LOCATED IN THESE UNITS.
- E312 IN ALL ACCESSIBLE UNITS INSTALL PANEL SO THAT HIGHEST BREAKER IS LOCATED AT 48" AFF FOR ADA.
- E313 PROVIDE AIR CYCLER SMART EXHAUST ROCKER BATH FAN AND LIGHT SWITCH FOR CONTROL OR EXHAUST FAN SERVING BATHROOM.
- E314 PROVIDE QUANTITY OF DATA CABLES INDICATED FROM EACH ROUGH-IN LOCATION TO SOHO BOX IN UNIT.
- E315 PROVIDE (2) DATA CABLES FROM SOHO BOX WITHIN UNIT TO SERVICE PROVIDER SPACE IN UTILITY 121.

AGENCY APPROVAL

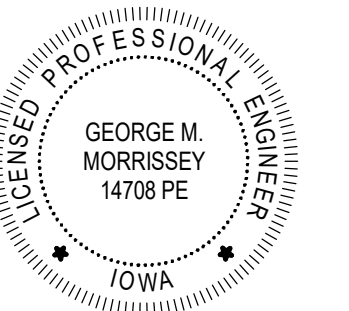
MEI PROJECT #: 25536



4640 North 110th
Street Omaha, NE
68164 P: 402.491.4144
Nebraska CCA Number: CA-0535
www.morrisseyengineering.com

© copyright permission to reproduce all or part of this drawing is hereby granted solely for the limited purpose of construction of this project or archiving. Unauthorized copying, disclosure or construction use without written permission of morrissey engineering, inc. is prohibited by copyright law. note: do not scale drawings. verify all dimensions and clearances from architectural, structural, shop and other appropriate drawings or at site. lay out and coordinate all work prior to installation to provide clearances required for operation, maintenance, and codes and verify non-interference with other work. do not fabricate prior to verification of clearance for all trades.

ALLEY POYNER
MACCHIETTO
ARCHITECTURE



ADD 03 05/22/2026

REVISION DATE

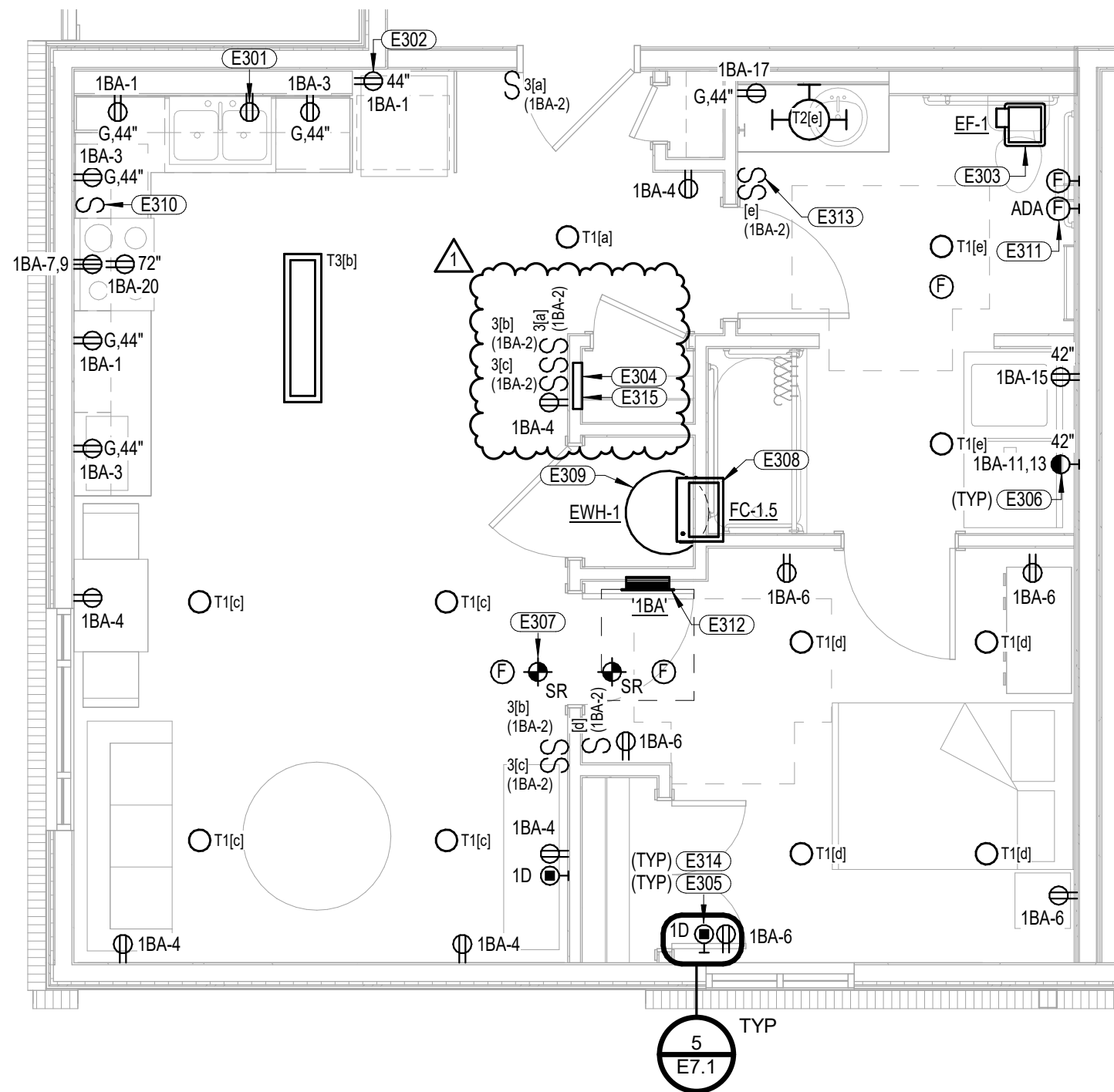
Project Number: 22011

Date: May 01, 2026

COPYRIGHT © 2026

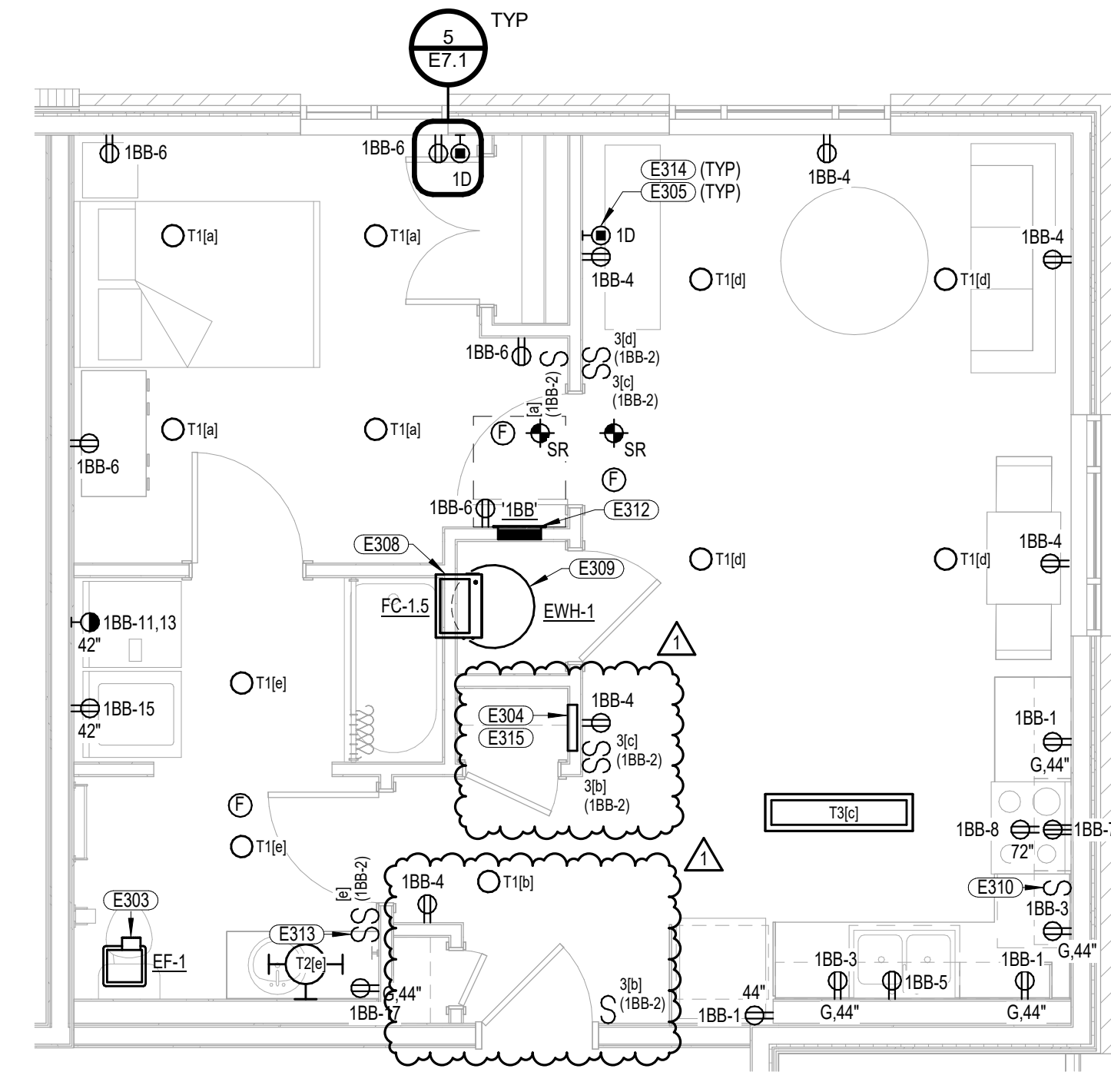
ENLARGED UNIT PLANS -
ELECTRICAL

E3.1



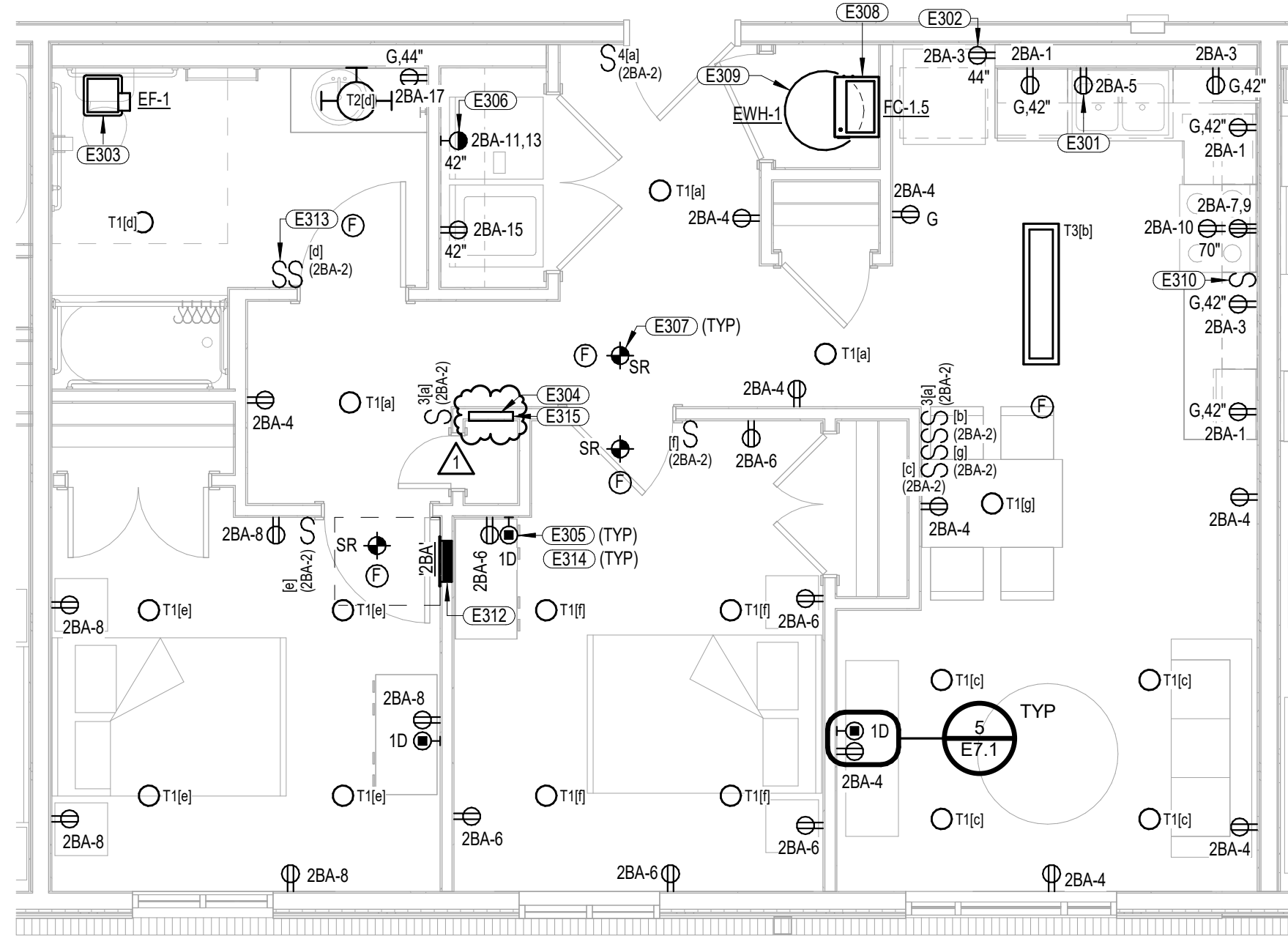
E1 TYPICAL UNIT PLAN - 1A - BED TYPE A - ELECTRICAL

E3.1 SCALE: 1/4" = 1'-0"



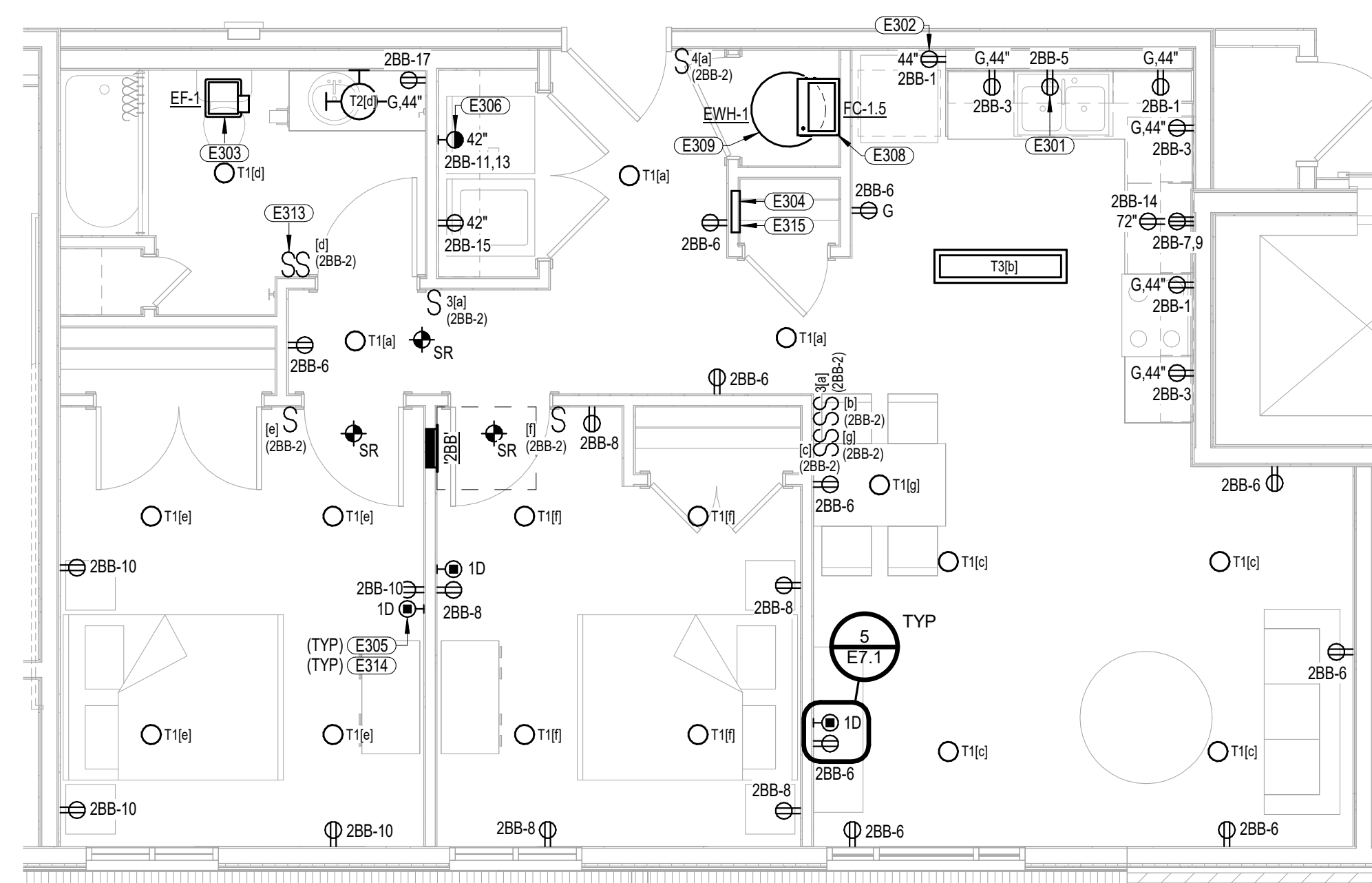
E8 TYPICAL UNIT PLAN - 1B - BED - ELECTRICAL

E3.1 SCALE: 1/4" = 1'-0"



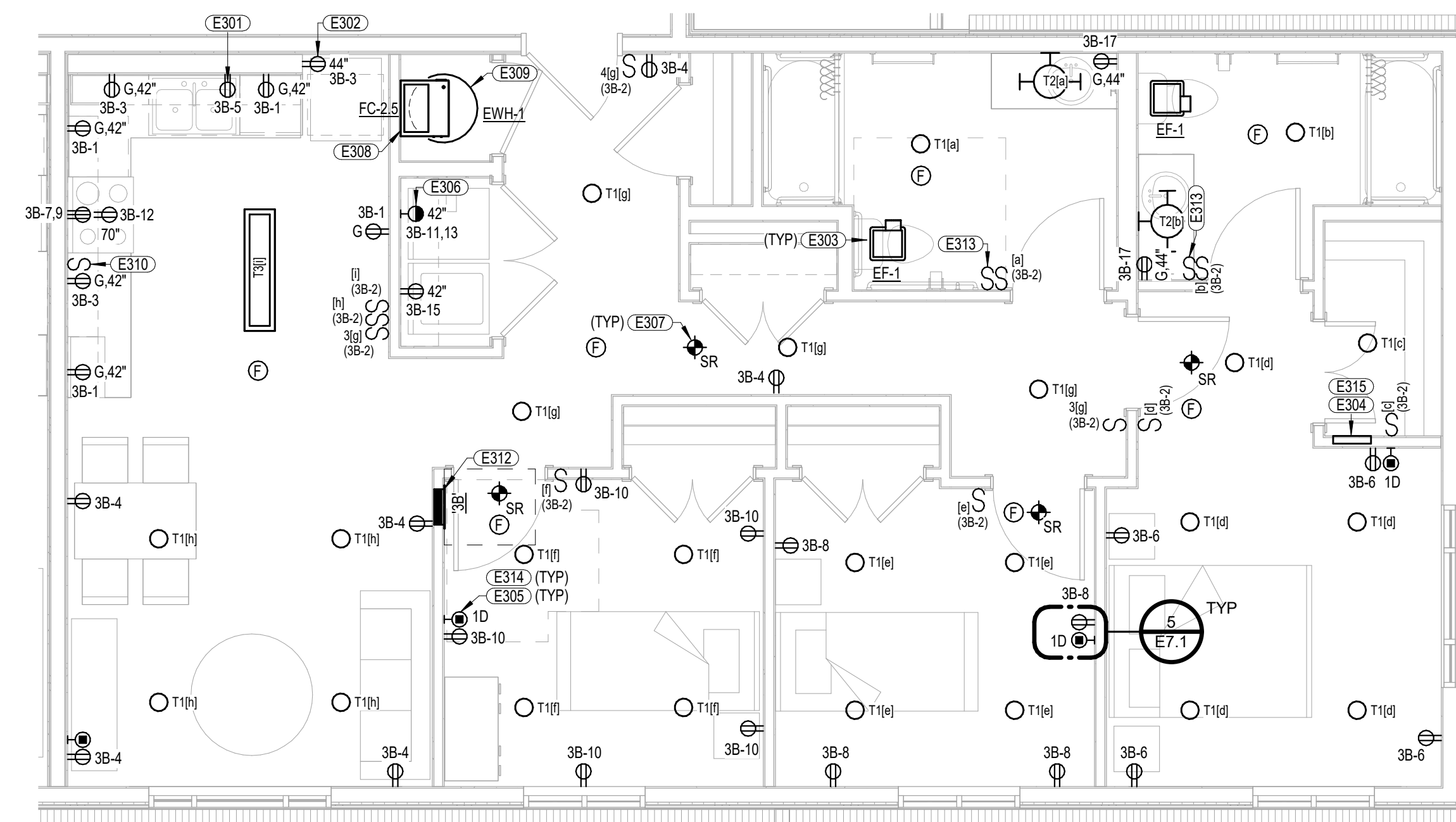
K1 TYPICAL UNIT PLAN - 2A - BED TYPE A - ELECTRICAL

E3.1 SCALE: 1/4" = 1'-0"



K8 TYPICAL UNIT PLAN - 2B.2 - BED TYPE B - ELECTRICAL

E3.1 SCALE: 1/4" = 1'-0"

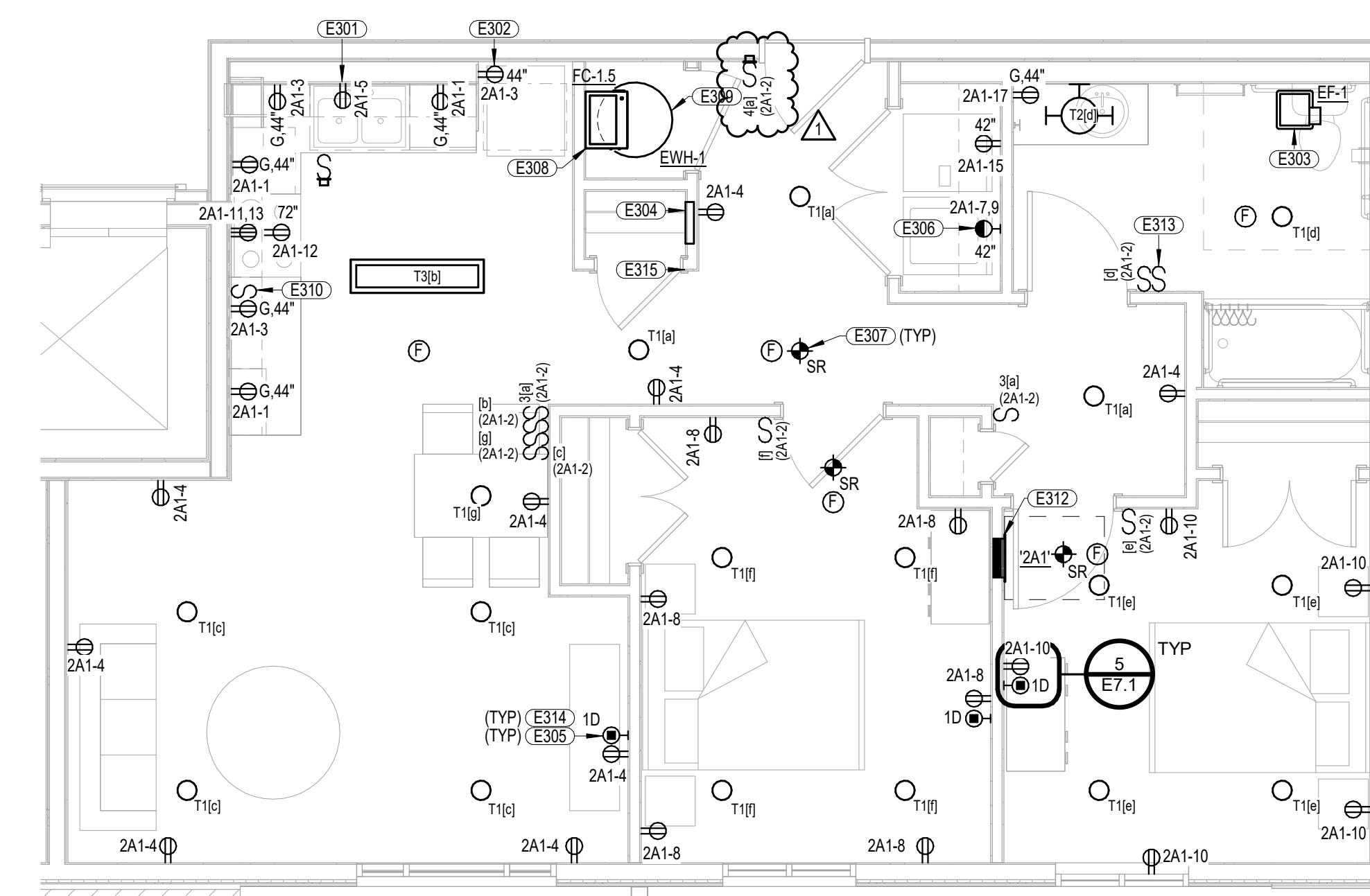


P8 TYPICAL UNIT PLAN - 3A - 3 BED - ELECTRICAL

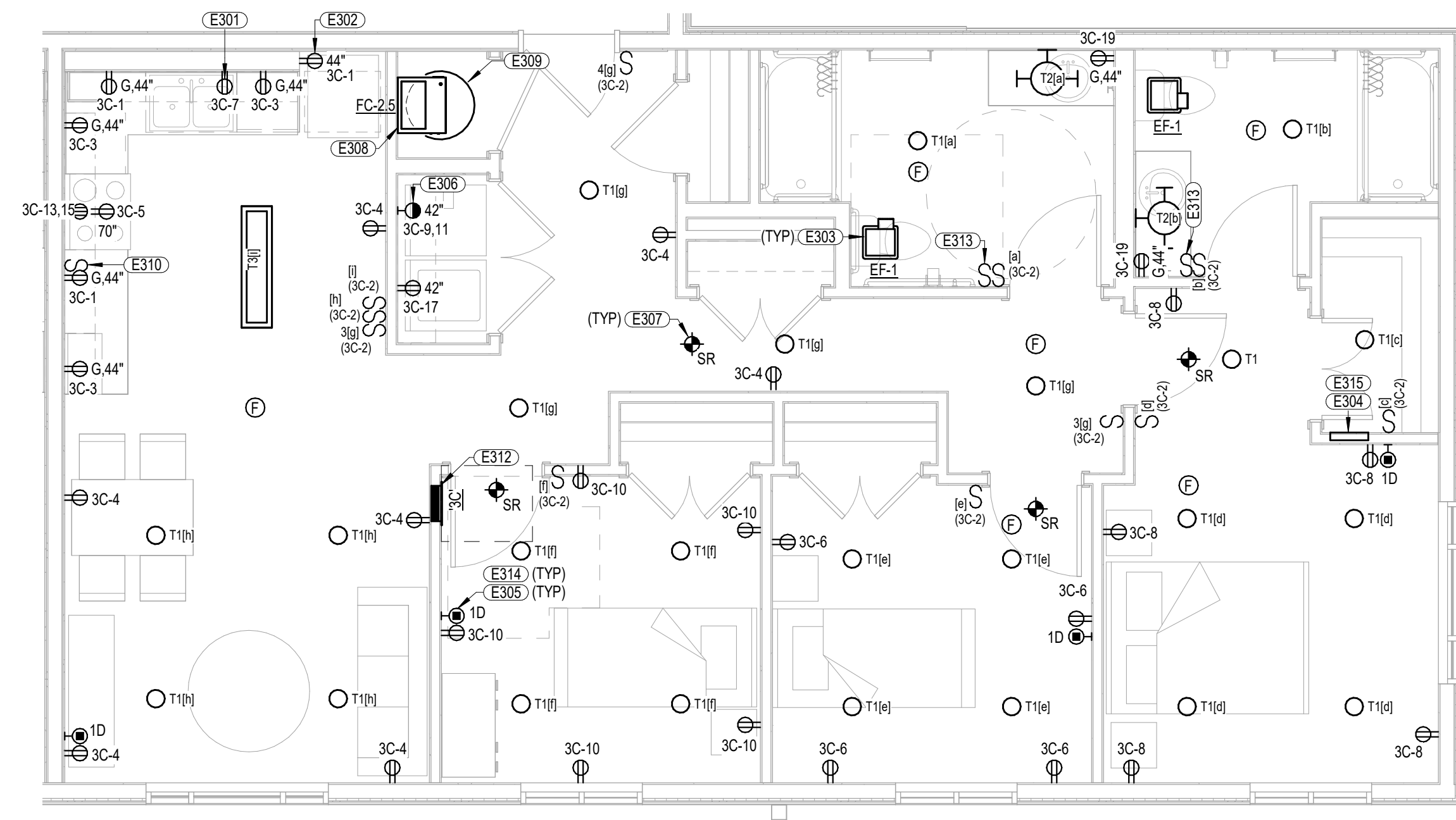
E3.1 SCALE: 1/4" = 1'-0"

- GENERAL RESIDENTIAL UNITS TYPICAL NOTES**
- CONNECT RECEPTACLE SERVING DWELLING UNIT REFRIGERATOR TO ONE OF THE SMALL-APPLIANCE CIRCUITS, PROTECTED BY UPSTREAM GFI DEVICE. DO NOT PROVIDE GFI RECEPTACLE FOR REFRIGERATOR.
 - MINIMUM SIZE FOR BRANCH CIRCUIT CONDUITS SHALL BE 1/2".
 - UNITS INDICATED ARE TYPICAL. COORDINATE RECEPTACLE LOCATIONS WITH ACTUAL FIELD MEASUREMENTS TO COMPLY WITH NEC SPACING REQUIREMENTS. VERIFY KITCHEN APPLIANCE LOCATIONS WITH OWNER AND ADJUST ACCORDINGLY.
 - PROVIDE AFCI TYPE CIRCUIT BREAKER OR DEVICE (WHERE NEUTRALS ARE SHARED) FOR ALL 120 VOLT, SINGLE PHASE, 15- AND 20-AMPERE BRANCH CIRCUITS AS REQUIRED BY NEC.
 - PROVIDE GFCI TYPE RECEPTACLES FOR ALL 120 VOLT, SINGLE PHASE, 15- AND 20-AMPERE RECEPTACLES PER NEC 210.8. PROVIDE GFCI TYPE RECEPTACLES FOR ALL RECEPTACLES INSTALLED WITHIN 6'-0" OF WATER, PER NEC 210.8.A.9.
 - PROVIDE TAMPER RESISTANT RECEPTACLES PER NEC 408.12. TAMPER RESISTANT RECEPTACLES ARE NOT INDICATED ON THE DRAWINGS.
 - MINIMUM SIZE FOR BRANCH CIRCUIT WIRING SHALL BE #12 AWG FOR 20 AMP CIRCUITS AND #14 FOR 15 AMP CIRCUITS.
 - COORDINATE FINAL DEVICE AND FIXTURE ROUGH-IN LOCATIONS WITH OWNER. ANY INSTALLATION DEVIATION BETWEEN DRAWINGS AND ACTUAL LOCATIONS SHALL BE COORDINATED WITH OWNER/ARCHITECT PRIOR TO ROUGH-IN.
 - ALL KITCHEN RECEPTACLES SHALL BE GFI TYPE PER NEC 210.8.
 - VERIFY RECEPTACLE MOUNTING HEIGHTS WITH FINAL CASEWORK AND UNIT FINISH DRAWINGS.
 - VERIFY FINAL LOCATION OF WASHER/DRYER PRIOR TO ROUGH-IN. COORDINATE WITH GENERAL CONTRACTOR AND MECHANICAL CONTRACTOR.
 - GANG ADJACENT DEVICES WHERE POSSIBLE.
 - SEE "APARTMENT UNIT ELECTRICAL SYMBOLS" ON THIS SHEET FOR ADDITIONAL INFORMATION.
 - DO NOT MOUNT DEVICES BACK-TO-BACK.
 - SMOKE DETECTORS SHALL NOT BE INSTALLED WITHIN 36" OF AN HVAC DIFFUSER OR RETURN AIR GRILLE PER NFPA 72.
 - ALTERNATE KITCHEN SMALL APPLIANCE RECEPTACLE CIRCUITS BETWEEN TWO BRANCH CIRCUITS INDICATED PER OMAHA MUNICIPAL CODE.
 - PROVIDE COMBINATION "AFCI/GFCI" TYPE BREAKERS FOR ALL 120 VOLT, SINGLE PHASE, 15- AND 20-AMPERE RECEPTACLES PER NEC 210.8 AND 210.12 WHERE RECEPTACLE IS NON-ACCESSIBLE.

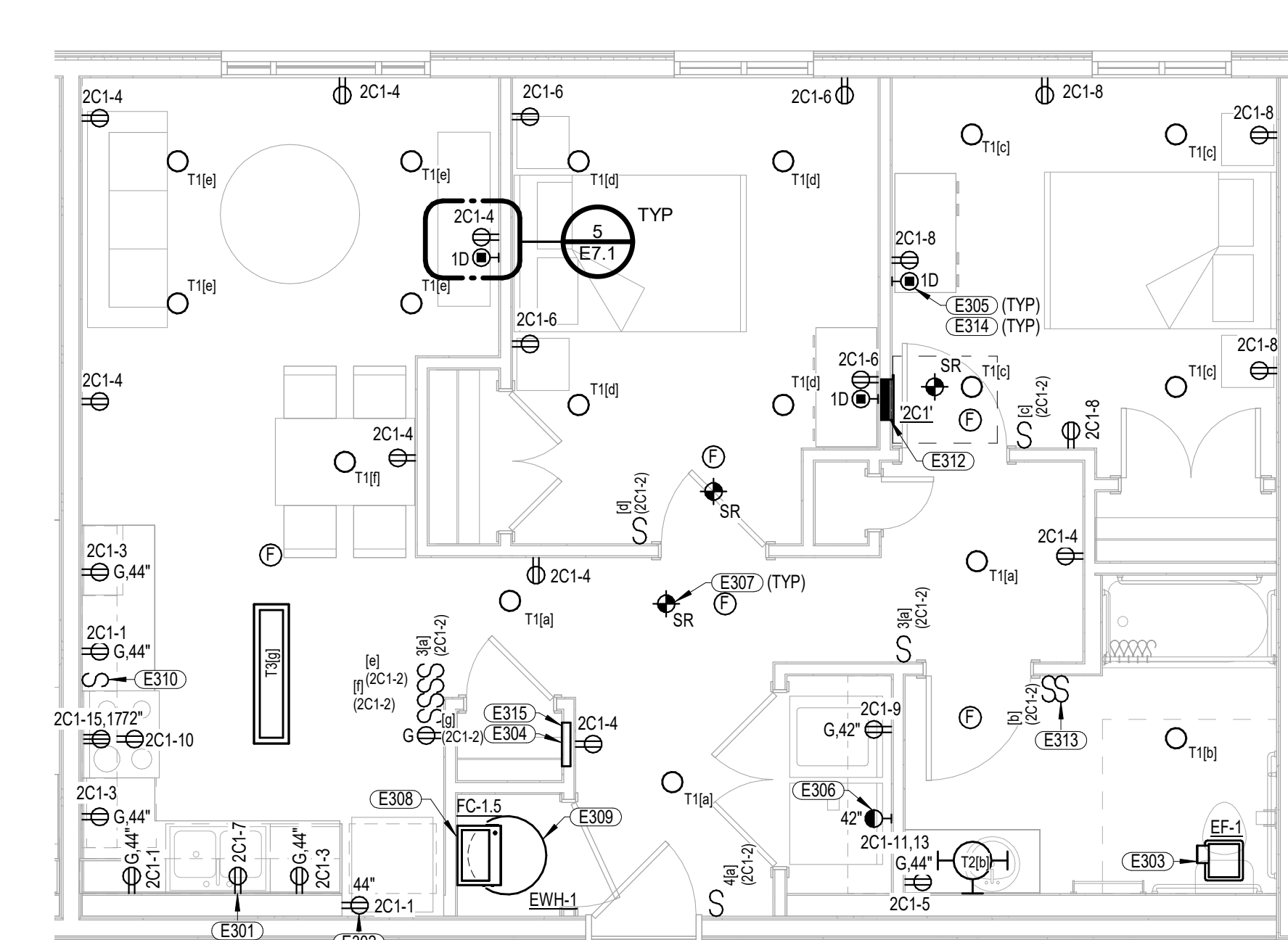
- KEYNOTES**
- E301 RECEPTACLE FOR DISHWASHER. SEE DETAIL PAGES 1 FOR MORE INFORMATION. PRIOR TO ROUGH-IN, COORDINATE LOCATION OF RECEPTACLE AND CONDUIT WITH GENERAL CONTRACTOR AND OTHER TRADES TO AVOID CONFLICTS BETWEEN ELECTRICAL AND PLUMBING WORK.
 - E302 RECEPTACLE SHALL BE CONNECTED AS FEED-THRU FROM ADJACENT GFCI.
 - E303 CONNECT EXHAUST FAN TO BRANCH CIRCUIT SERVING LIGHT FIXTURES WITHIN SAME ROOM AS EXHAUST FAN. CONNECT EXHAUST FAN TO SWITCH INDICATED.
 - E304 PROVIDE TELEPHONE/CATV TERMINAL BOX, SUTLE SOHO ACCESS ENCLOSURE IMME-10E-102 (OR APPROVED EQUAL) INSTALL FLUSH IN WALL AT 36" AFF. PROVIDE DUPLEX RECEPTACLE INSIDE CABINET AND CIRCUIT TO NEAREST HALLWAY RECEPTACLE CIRCUIT. PROVIDE 1-1/4" CONDUIT CONCEALED TO NEAREST ACCESSIBLE CEILING SPACE OR COMMUNICATIONS ROOM. SEE DETAIL D1504.1.
 - E305 PROVIDE SINGLE GANG CADDY RING FOR DATA ROUGH-IN.
 - E306 PROVIDE 120V POWER CONNECTION TO IN-LINE CLOTHES DRYER BOOSTER FAN WHERE REQUIRED. VERIFY FAN LOCATION WITH MECHANICAL CONTRACTOR. PROVIDE SINGLE POLE TOGGLE SWITCH DISCONNECT AT FAN. COORDINATE SWITCH AND FAN ACCESS MEANS WITH GENERAL CONTRACTOR.
 - E307 PROVIDE SYSTEM SMOKE DETECTORS WITHIN APARTMENT UNIT WITH LOW FREQUENCY SOLINGER BASE (SEE SPECIFICATIONS). INTERLOCK DETECTORS WITH UNIT PER NFPA REQUIREMENTS VIA PROGRAMMING. PROGRAM FIRE ALARM SYSTEM TO SHUT DOWN FAN COIL UNIT AND RESTROOM EXHAUST FAN IN THE EVENT OF ALARM CONDITION IN RESPECTIVE UNIT VIA FIRE ALARM RELAY.
 - E308 FAN COIL PROVIDED WITH INTEGRAL DISCONNECT. CONNECT FAN COIL TO LOAD CENTER SERVING SAME UNIT AS FAN COIL. CONNECT FC-1.5 WITH 298 #10G-34"C AND FC-2.0.2.5 WITH 298 #10G-1"C. SEE PANEL SCHEDULES FOR ADDITIONAL INFORMATION. PROVIDE FIRE ALARM RELAY TO SHUT DOWN FAN COIL AND EXHAUST FAN IF SMOKE DETECTOR IN THE SAME UNIT ACTIVATE.
 - E309 CONNECT WATER HEATER TO LOAD CENTER SERVING SAME UNIT AS WATER HEATER. CONNECT WITH 298 #10G-1"C. SEE PANEL SCHEDULES FOR ADDITIONAL INFORMATION. PROVIDE LOCKABLE CIRCUIT BREAKER TO SERVE AS DISCONNECTING MEANS.
 - E310 IN ALL ACCESSIBLE UNITS PROVIDE A MASTER ON/OFF SWITCH IN A.D.A. DESIGNATED UNITS LOCATED AT THE COUNTER LEVEL AT 44" FOR ADA OTR HOOD CONTROL.
 - E312 IN ALL ACCESSIBLE UNITS INSTALL PANEL SO THAT HIGHEST BREAKER IS LOCATED AT 48" A.F.F FOR ADA.
 - E313 PROVIDE AIR CYCLER SMART EXHAUST ROCKER BATH FAN AND LIGHT SWITCH FOR CONTROL OF EXHAUST FAN SERVING BATHROOM.
 - E314 PROVIDE QUANTITY OF DATA CABLES INDICATED FROM EACH ROUGH-IN LOCATION TO SOHO BOX IN UNIT.
 - E315 PROVIDE DATA CABLES FROM SOHO BOX WITHIN UNIT TO SERVICE PROVIDER SPACE IN UTILITY 121.



J9 TYPICAL UNIT PLAN - 2A.1 - 2 BED - ELECTRICAL
E3.3 SCALE: 1/4" = 1'-0"



P4 TYPICAL UNIT PLAN - 3C - 3 BED - ELECTRICAL
E3.3 SCALE: 1/4" = 1'-0"



P11 TYPICAL UNIT PLAN - 2C.1 - 2 BED ADA - ELECTRICAL
E3.3 SCALE: 1/4" = 1'-0"

AGENCY APPROVAL

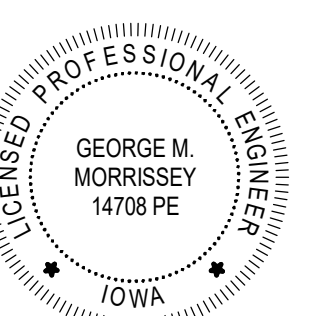
MEI PROJECT #: 25536



© copyright www.morrisseyengineering.com
permission to reproduce all or part of this drawing is hereby granted solely for the limited purpose of construction of this project or archiving. unauthorized copying, disclosure or construction use without written permission of morrissey engineering, inc. is prohibited by copyright law.

do not scale drawings. verify all dimensions and clearances from architectural, structural, shop and other appropriate drawings or at site. lay out and coordinate all work prior to installation to provide clearances required for operation, maintenance, and codes and verify non-interference with other work. do not fabricate prior to verification of clearance for all trades.

**ALLEY POYNER
MACCHIETTO
ARCHITECTURE**



ADD 03 05/22/2026

REVISION DATE
Project Number: 22011
Date: May 01, 2026
COPYRIGHT © 2026

ENLARGED UNIT PLANS - ELECTRICAL

E3.3

Interior Lighting Compliance Certificate

Project Information

Energy Code: 2018 IECC

Project Type: New Construction

Allowed Interior Lighting Power

| MULTIFAMILY | AREA CATEGORY | FLOOR AREA (FT2) | ALLOWED WATTS/FT2 | ALLOWED WATTS |
|-------------|---------------|------------------|------------------------|---------------|
| | | 10669 SF | 0.61 W/ft ² | 6526 W |

Proposed Interior Lighting Power

| FIXTURE ID | DESCRIPTION | # OF FIXTURES | FIXTURE WATT | TOTAL WATTS | EXEMPTION |
|----------------------|----------------------|---------------|--------------|-------------|-----------|
| 1 | SIN SLIM SURFACE | 116 | 17 W | 1972 W | |
| 4A | 4FT LINEAR | 1 | 32 W | 32 W | |
| 4B | 6FT LINEAR | 15 | 48 W | 720 W | |
| 5 | 4FT VAPORTITE | 8 | 40 W | 320 W | |
| 6 | 4FT STRIP LIGHT | 5 | 41 W | 205 W | |
| 8 | HEAT RESISTANT LIGHT | 2 | 40 W | 80 W | |
| 10 | WALL SCONCE | 45 | 10 W | 450 W | |
| Total Proposed Watts | | | | 3779 W | |

Interior Lighting PASSES

Interior Lighting Compliance Statement

Compliance Statement: The proposed interior lighting design represented in this document is consistent with the building plans, specifications, and other calculations submitted with this permit application. The proposed interior lighting systems have been designed to meet the 2018 IECC requirements in COMcheck Version 4.1.1.0 and to comply with any applicable mandatory requirements listed in the Inspection Checklist.

COMcheck Software Version 4.1.5.5

Exterior Lighting Compliance Certificate

Project Information

Energy Code: 2018 IECC
Project Title: SPIN LOFTS
Project Type: New Construction
Exterior Lighting Zone: 2 (Residential mixed use area (L22))

Construction Site: 521 21ST AVE
COUNCIL BLUFFS, IA 51501
Owner/Agent: MORRISSEY ENGINEERING
OMAHA, NE
Designer/Contractor: MORRISSEY ENGINEERING
OMAHA, NE

Allowed Exterior Lighting Power

| A Area/Surface Category | B Quantity | C Allowed Watts / Unit | D Tradable Wattage | E Allowed Watts (B X C) |
|--|-----------------------|---------------------------|-----------------------|----------------------------|
| Parking area | 25960 ft ² | 0.04 | Yes | 1038 |
| Walkway >= 10 feet wide | 1440 ft ² | 0.1 | Yes | 144 |
| Special feature area | 2861 ft ² | 0.1 | Yes | 286 |
| Total Tradable Watts (a) = | | | | 1468 |
| Total Allowed Watts = | | | | 1468 |
| Total Allowed Supplemental Watts (b) = | | | | 400 |

(a) Wattage tradeoffs are only allowed between tradable areas/surfaces.
(b) A supplemental allowance equal to 400 watts may be applied toward compliance of both non-tradable and tradable areas/surfaces.

Proposed Exterior Lighting Power

| Fixture ID : Description / Lamp / Wattage Per Lamp / Ballast | B Lamps/ Fixture | C # of Fixtures | D Fixture Watt. | E (C X D) |
|---|------------------------|-----------------------|-----------------------|--------------|
| Parking area (25960 ft²): Tradable Wattage | | | | |
| LED 1: A2: Other: | 1 | 2 | 180 | 360 |
| LED 1 copy 1: B: Other: | 1 | 1 | 90 | 90 |
| Walkway >= 10 feet wide (1440 ft²): Tradable Wattage | | | | |
| LED 4: 7: Other: | 1 | 3 | 6 | 18 |
| LED 4 copy 1: 1: Other: | 1 | 7 | 17 | 119 |
| Special feature area (2861 ft²): Tradable Wattage | | | | |
| LED 1 copy 2: B: Other: | 1 | 2 | 90 | 180 |
| Total Tradable Proposed Watts = | | | | 767 |

Exterior Lighting PASSES: Design 59% better than code

Exterior Lighting Compliance Statement

Compliance Statement: The proposed exterior lighting design represented in this document is consistent with the building plans, specifications, and other calculations submitted with this permit application. The proposed exterior lighting systems have been designed to meet the 2018 IECC requirements in COMcheck Version 4.1.5.5 and to comply with any applicable mandatory requirements listed in the Inspection Checklist.

Project Title: SPIN LOFTS
Data Filename: K:\2025\25536 Archicon Spin Lofts\Calculations\ELECTRICAL\25536 spinlofts_ELEC.cck
Report date: 05/01/26
Page 1 of 5

| MARK | DESCRIPTION | MANUFACTURER | CATALOG NUMBER | LIGHT SOURCE | | | ELECTRICAL | | FINISH | MOUNTING | ACCEPTABLE MANUFACTURERS | REMARKS |
|------|----------------------|--------------|---|--------------|-------|------|------------|-------|--------------|--------------------|--------------------------|--------------------|
| | | | | SPEC. | CCT | TYPE | LOAD | VOLTS | | | | |
| 1 | SIN SLIM SURFACE | JUNO | JSBC 7IN 30K 90CRI WH M6 | 1,050 LM | 3000K | LED | 17 W | 120 V | WHITE | SURFACE / CEILING | HALO | |
| 2 | EMERGENCY LIGHT | COMPASS | CU2 | N/A | N/A | LED | 2 W | 120 V | WHITE | SURFACE / WALL | LITHONIA | |
| 3 | EXIT LIGHT | COMPASS | CCR | N/A | N/A | LED | 2 W | 120 V | WHITE | NOTE 2 | LITHONIA | |
| 4A | 4FT LINEAR | MARK | SL2_L-OP-4FT-RLP-GB-80CRI-30K-800LM-F-NODIM-120 | 800 LM / FT | 3000K | LED | 32 W | 120 V | WHITE | RECESSED / CEILING | | |
| 4B | 6FT LINEAR | MARK | SL2_L-OP-4FT-RLP-GB-80CRI-30K-800LM-F-NODIM-120 | 800 LM / FT | 3000K | LED | 48 W | 120 V | WHITE | RECESSED / CEILING | | |
| 5 | 4FT VAPORTITE | WESTGATE | LLV1-4FT-40W-MCT-D | 5,500 LM | 5000K | LED | 40 W | 120 V | WHITE | SURFACE / WALL | LITHONIA | |
| 6 | 4FT STRIP LIGHT | COLUMBIA | CSL4-A-L-SCS | 5,400 LM | 4000K | LED | 41 W | 120 V | WHITE | SURFACE / CEILING | LITHONIA | |
| 7 | EXTERIOR WALL PACK | BEGA US | B33329-H4-BLK | 350 LM | 4000K | LED | 6 W | 120 V | BLACK | SURFACE / WALL | | |
| 8 | HEAT RESISTANT LIGHT | THYEX | L539C | 5,040 LM | 5000K | LED | 40 W | 120 V | SILVER / RED | SURFACE / CEILING | | |
| 9 | HEAT RESISTANT LIGHT | THYEX | L539C | 5,040 LM | 5000K | LED | 40 W | 120 V | BLACK | SURFACE / WALL | | |
| 10 | WALL SCONCE | GENERIC | NORDIC LED GLASS BALL WALL LAMP | NOTE 4 | WARM | LED | 10 W | 120 V | TBD | SURFACE / WALL | | NOTE 3, UNSWITCHED |
| 11 | 2FT VANITY LIGHT | RP LIGHTING | 4807-BN-24 | 1,350 LM | 3000K | LED | 15 W | 120 V | BRONZE | SURFACE / WALL | | |
| 12 | 1X4 FLAT PANEL | LITHONIA | CPANL 1X4 AL01 SWW7 M4 | 4,400 LM | 3000K | LED | 41 W | 120 V | WHITE | RECESSED / CEILING | | |

GENERAL REQUIREMENTS:

- CONTRACTOR SHALL VERIFY CATALOG NUMBERS AND INSTALLATION REQUIREMENTS PRIOR TO ORDERING. NOTIFY ENGINEER OF ANY CONFLICTS WITH PROPOSED INSTALLATION.
- CONTRACTOR SHALL COORDINATE CEILING TRIM OPTIONS FOR LUMINAIRES INSTALLED IN GRID-TYPE SUSPENDED CEILINGS. SEE ARCHITECTURAL DRAWINGS AND SPECIFICATIONS.

LUMINAIRE SCHEDULE NOTES:

- LUMINAIRE SHALL BE CONSIDERED EQUAL AS MANUFACTURED BY: ACUTY BRANDS, COOPER, CURRENT, SIGNIFY, H.E. WILLIAMS.
- REFER TO PLANS FOR MOUNTING REQUIREMENTS SUCH AS WALL MOUNT, END MOUNT, CEILING MOUNT AND PROVIDE LUMINAIRE ACCORDINGLY. PROVIDE DIRECTIONAL CHEVRON ARROWS AS INDICATED ON PLANS.
- COORDINATE LOCATION OF LIGHT FIXTURE WITH GENERAL CONTRACTOR/ARCHITECT PRIOR TO ROUGH-IN.
- VERIFY LAMP TYPE WITH MANUFACTURER PRIOR TO PURCHASE.

ELECTRIC HEAT SCHEDULE

| MARK | MANUFACTURER | CATALOG NUMBER | WATTS | VOLTAGE | PHASE | LENGTH | REMARKS |
|------|---------------|---------------------|---------|---------|-------|--------|----------|
| EH-1 | KING ELECTRIC | LPWA245-S-TP-G-CB3 | 4500 VA | 208 V | 1 | | NOTE 1.2 |
| EH-2 | KING ELECTRIC | LPWA1227-S-TP-G-CB3 | 2750 VA | 120 V | 1 | | NOTE 1.2 |

NOTES:

- PROVIDE WITH INTEGRAL SERVICE DISCONNECT AND THERMOSTAT. INSTALL PER MANUFACTURER'S INSTRUCTIONS.
- HEATER IS FURNISHED FROM FACTORY WITH SELECTABLE WATTAGE OUTPUT. CONNECT AT WATTAGE SCHEDULED.

FLOORBOX SCHEDULE

| MARK | DESCRIPTION | MANUFACTURER | MODEL | COVER | | | | RECEPTACLE | LOW VOLTAGE CONDUIT | ACCEPTABLE MANUFACTURERS | REMARKS |
|------|--|--------------|-----------|-------|-----|--------|--------|------------|---------------------|--------------------------|----------|
| | | | | STYLE | TOP | FLANGE | FINISH | | | | |
| FB# | 4-GANG MULTI-SERVICE ON GRADE FLOORBOX | WIREMOLD | RFBAR300G | FP | B | TC | BLACK | (2) 5-20 | 1-1/4" | NOTE 1 | NOTE 2.3 |

GENERAL REQUIREMENTS:

- CONTRACTOR SHALL VERIFY CATALOG NUMBERS AND INSTALLATION REQUIREMENTS PRIOR TO ORDERING. NOTIFY ENGINEER OF ANY CONFLICTS WITH PROPOSED INSTALLATION.
- INSTALL PER MANUFACTURER'S INSTRUCTIONS.
- CONFIRM FINAL LOCATION WITH ARCHITECT AND OWNER PRIOR TO ROUGH-IN.
- VERIFY FINISH AND FLOORING TYPE PRIOR TO ORDERING.
- PREPOUR SLEEVES MAY BE USED IN PLACE OF CORE DRILLING/SAW CUTTING IF LOCATIONS ARE DETERMINED PRIOR TO POURING THE FLOOR.
- PROVIDE WITH EXTENSION RING FOR USE WHEN POURING FLOOR.
- SAWCUT FLOOR AS REQUIRED.

FLOORBOX SCHEDULE NOTES:

- FLOORBOX SHALL BE CONSIDERED EQUAL AS MANUFACTURED BY: WIREMOLD, HUBBELL.
- PROVIDE WITH INTERNAL RJ DEVICE BRACKETS AND ALL OTHER MOUNTING HARDWARE AS REQUIRED.
- PROVIDE CONDUIT FROM DATA BOX ROUTED UNDERFLOOR, UP CONCEALED IN WALL, AND STUBBED TO ABOVE ACCESSIBLE CEILING SPACE. TERMINATE WITH INSULATING BUSHING.

AGENCY APPROVAL

MEI PROJECT #: 25536

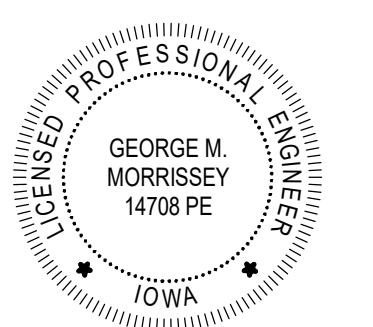


4840 North 110th
Street Omaha, NE
68164 P: 402.481.4144
Nebraska CCA Number: CA-0835
© copyright www.morrisseyengineering.com

permission to reproduce all or part of this drawing is hereby granted solely for the limited purpose of construction of this project or archiving. unauthorized copying, disclosure or construction use without written permission of morrissey engineering, inc. is prohibited by copyright law. note:

do not scale drawings. verify all dimensions and clearances from architectural, structural, shop and other appropriate drawings or at site. lay out and coordinate all work prior to installation to provide clearances required for operation, maintenance, and codes and verify non-interference with other work. do not fabricate prior to verification of clearance for all trades.

ALLEY POYNER
MACCHIETTO
ARCHITECTURE



ADD 03 05/22/2026

REVISION DATE

Project Number: 22011

Date: May 01, 2026

COPYRIGHT © 2026

ELECTRICAL SCHEDULES

E6.1