

NEBRASKA DEPARTMENT OF CORRECTIONS  
TECUMSEH STATE CORRECTIONAL INSTITUTION  
FIBER CABLE REPLACEMENT  
2725 NE-50,  
Tecumseh, Nebraska 68450  
Construction Documents March 12, 2024  
DCS PROJECT # 2315A

PHASING SCHEDULE

APR 2024	MAY 2024	JUN 2024	JUL 2024	AUG 2024	SEP 2024	OCT 2024	NOV 2024	DEC 2024	JAN 2025	FEB 2025	MAR 2025	APR 2025	MAY 2025	JUN 2025	JUL 2025	AUG 2025	SEP 2025	OCT 2025
<div><div></div><div></div><div>PRE-BID MEETING 4/2 10:00 AM, BID 4/11 2:00PM</div><div>SITE ADMIN SUPPORT BLDGS HOUSING UNITS</div><div></div><div>CONTRACT WORK KEEP DOWNTIME TO A MINIMUM</div><div></div><div></div><div>PUNCH LIST / CLOSE OUT</div></div>																		



No.	Issued For	Date
1	ADDENDUM #1	04/05/2024

DATE: 03/12/2024



### GENERAL NOTES

- THIS LEGEND IS GENERAL IN NATURE, NOT ALL SYMBOLS SHOWN ARE USED
- LIGHT SHADING INDICATES ITEM IS EXISTING
- MOUNTING HEIGHTS ARE FROM ABOVE FINISHED FLOOR TO CENTER OF BOX, UNLESS NOTED OTHERWISE

KEY: KEY DESIGNATION  
EQUIPMENT DESIGNATION, REFER TO EQUIPMENT CONNECTION SCHEDULE

XXX-  
S SINGLE POLE SWITCH  $\text{Q}4\text{B}/\text{AFF}$   
DOUBLE POLE SWITCH  $\text{Q}4\text{B}/\text{AFF}$  (IF SERVING MECHANICAL EQUIPMENT, LOCATE ADJACENT TO UNIT)  
THREE-WAY SWITCH  $\text{Q}4\text{B}/\text{AFF}$   
FOUR-WAY SWITCH  $\text{Q}4\text{B}/\text{AFF}$

SS-  
INBOARD/ONBOARD SWITCH  $\text{Q}4\text{B}/\text{AFF}$   
KEY SWITCH  $\text{Q}4\text{B}/\text{AFF}$

SM-  
MOMENTARY CONTACT SWITCH  $\text{Q}4\text{B}/\text{AFF}$   
PILOT LIGHT SWITCH  $\text{Q}4\text{B}/\text{AFF}$

TS-  
TIMER SWITCH  $\text{Q}4\text{B}/\text{AFF}$

MANUAL STARTER WITH TOGGLE - PROVIDE THERMAL  
ELEMENT IF MOTOR IS NOT INHERENTLY PROTECTED  
STE-  
STARTER SWITCH  $\text{Q}4\text{B}/\text{AFF}$

C-  
CIRCUIT  $\text{Q}4\text{B}/\text{AFF}$

NUMBER MOUNT LIGHT FIXTURE - NUMBER INDICATES  
DESIGNATION, REFER TO LIGHT FIXTURE SCHEDULE

EMERGENCY BALLAST OR ON EMERGENCY BALLAST OR  
ON EMERGENCY POWER - NUMBER INDICATES DESIGNATION,  
REFER TO LIGHT FIXTURE SCHEDULE

FLUORESCENT LIGHT FIXTURE - NUMBER INDICATES  
DESIGNATION, REFER TO LIGHT FIXTURE SCHEDULE

FLUORESCENT LIGHT FIXTURE WITH EMERGENCY  
BALLAST OR ON EMERGENCY POWER - NUMBER INDICATES  
DESIGNATION, REFER TO LIGHT FIXTURE SCHEDULE

C-  
CEILING MOUNT, SINGLE FADE EXIT SIGN - ARROW INDICATES  
DIRECTION - NUMBER INDICATES DESIGNATION, REFER TO  
LIGHT FIXTURE SCHEDULE

C-  
CEILING MOUNT, DOUBLE FADE EXIT SIGN - ARROW INDICATES  
DIRECTION - NUMBER INDICATES DESIGNATION, REFER TO  
LIGHT FIXTURE SCHEDULE

W-  
WALL MOUNT EXIT SIGN - ARROW INDICATES DIRECTION -  
NUMBER INDICATES DESIGNATION, REFER TO LIGHT FIXTURE  
SCHEDULE

C-  
COMBINATION EXIT SIGN AND EMERGENCY LIGHTING UNIT -  
NUMBER INDICATES DESIGNATION, REFER TO LIGHT FIXTURE  
SCHEDULE

EMERGENCY LIGHTING UNIT - NUMBER INDICATES DESIGNATION,  
REFER TO LIGHT FIXTURE SCHEDULE

C-  
TRACK LIGHTING - NUMBER INDICATES DESIGNATION, REFER TO  
LIGHT FIXTURE SCHEDULE

C-  
CEILING FAN - NUMBER INDICATES DESIGNATION, REFER TO  
LIGHT FIXTURE SCHEDULE

P-  
POLE MOUNT SIGN - NUMBER INDICATES TYPE,  
REFER TO LIGHT FIXTURE SCHEDULE

C-  
CEILING MOUNT OCCUPANCY SENSOR - NUMBER INDICATES  
DESIGNATION, REFER TO OCCUPANCY SENSOR SCHEDULE

W-  
WALL MOUNT OCCUPANCY SENSOR - ARROW INDICATES  
DIRECTION - NUMBER INDICATES DESIGNATION, REFER TO  
OCCUPANCY SENSOR SCHEDULE

S-  
SIMPLEX RECEPTACLE  $\text{Q}4\text{B}/\text{AFF}$   
DUPLEX RECEPTACLE  $\text{Q}4\text{B}/\text{AFF}$   
SPECIAL RECEPTACLE  $\text{Q}4\text{B}/\text{AFF}$   
QUAD RECEPTACLE  $\text{Q}4\text{B}/\text{AFF}$

H-  
HORIZONTAL DUPLEX RECEPTACLE  $\text{Q}4\text{B}/\text{AFF}$

I-  
ISOLATED GROUND DUPLEX RECEPTACLE  $\text{Q}4\text{B}/\text{AFF}$

S-  
SPLIT DUPLEX RECEPTACLE  $\text{Q}4\text{B}/\text{AFF}$

C-  
CIRCUIT MOUNT OR SUSPENDED DUPLEX RECEPTACLE

F-  
FLOOR RECEPTACLE

CONNECTION FLOOR BOX

T-  
TELEPHONE OUTLET  $\text{Q}4\text{B}/\text{AFF}$  - ROUTE "T" TO ABOVE  
EQUIPMENT, UNLESS NOTED OTHERWISE

D-  
DATA OUTLET  $\text{Q}4\text{B}/\text{AFF}$ , NUMBERS INDICATED JACO  
REGARDING INDICATED NUMBER (S) INLET JACO - ROUTE "T"  
TO ABOVE ACCESSIBLE LOCATION, UNLESS NOTED OTHERWISE

T-  
TELEPHONE RECEPTACLE  $\text{Q}4\text{B}/\text{AFF}$  - NUMBERS  
INDICATE JACO REQUIRED IN ROUTE TO ABOVE ACCESSIBLE  
LOCATION, UNLESS NOTED OTHERWISE

F-  
FUSIBLE DISCONNECT SWITCH  $\text{Q}4\text{B}/\text{AFF}$   
NON-FUSIBLE DISCONNECT SWITCH  $\text{Q}4\text{B}/\text{AFF}$

M-  
MOTOR STARTER  $\text{Q}4\text{B}/\text{AFF}$

C-  
CIRCUIT STARTER  $\text{Q}4\text{B}/\text{AFF}$

E-  
ENCLOSED CIRCUIT BREAKER

P-  
PLUMBORED RACEWAY MULTITRIPLET SYSTEM

P-  
PAD MOUNT TRANSFORMER

D-  
DRY TRANSFORMER

T-  
TELEPHONE RECEPTACLE

T-  
TELEVISION PEDestal

V-  
VARIABLE ACCESS POINT

B	BELL - STAND ALONE DEVICE OR CONNECTED TO MASTER CLOCK	A	AMPERS
C	CLOCK - STAND ALONE DEVICE OR CONNECTED TO MASTER CLOCK SYSTEM	AFB	ABOVE FINISHED GRADE
D	DOOR SMOKE DETECTOR	AFI	ARC FAULT CIRCUIT INTERRUPTER
E	DOOR CONTACT	ATS	AUTOMATIC TRANSFER SWITCH
F	MOTOR CONNECTION	AWG	AMERICAN WIRE GAUGE
G	PUSH BUTTON 0'00" AFF	B/BFC/ACB	FIRE ALARM BATTERY CABINET
H	CEILING MOUNT SPEAKER	BFG	BELOW FINISH GRADE
I	TELEVISION OUTLET 0'00" AFF - ROUTE 3/4" TO ABOVE ACCESSIBLE CEILING, UNLESS NOTED OTHERWISE	C	CONDUIT
J	WALL MOUNT CLOUT OUTLET 0'00" AFF - ROUTE 3/4" TO ABOVE ACCESSIBLE CEILING, UNLESS NOTED OTHERWISE	CATV	CABLE TELEVISION
K	PHOTO CONTROLLER	CTTV	CLOSED-CIRCUIT TELEVISION
L	DIGITAL DISBURBMENT LIGHTING CONTROL, STATION, LETTER INDICATES TYPE 0' 04" AFF.	CUG	CEILING
M	WALL MOUNT SPEAKER 0'00" AFF - ROUTE 3/4" TO ABOVE ACCESSIBLE CEILING, UNLESS NOTED OTHERWISE	CO	CARBON MONOXIDE
N	BOLDER SHOUTER SWITCH 0'00" AFF	CU	COPPER
O	CARD READER 0'00" AFF	D	INDICATES ITEM TO BE DEMOLISHED
P	ELECTRIC STRIKE	E	INDICATES EXISTING ITEM
Q	MAGNETIC DOOR HOLDER	EM	EMERGENCY
R	DUAL INPUT MODULE	END	ESTIMATED MAXIMUM DEMAND
S	WALL WITH INPUT MODULE	ENT	ELECTRICAL METALLIC TUBING
T	ZONE INPUT MODULE	ERESK	EMERGENCY RESPONDER COMMUNICATIONS ENHANCEMENT SYSTEM
U	INTERCOM CALL-IN SWITCH 0'00" AFF	ESRCS	EMERGENCY RESPONDER RADIO COMMUNICATIONS SYSTEM
V	JUNCTION BOX 0'00" AFF - ROUTE 1" TO ABOVE ACCESSIBLE CEILING, UNLESS NOTED OTHERWISE	EXP	EXPLOSION PROOF
W	KEYPAD 0'00" AFF	F	FUNCTIONAL
X	MICROPHONE OUTLET 0'00" AFF	FA	FIRE ALARM
Y	MAGNETIC LOCK	FAMP	FIRE ALARM ANNUNCIATOR PANEL
Z	NURSE CALL 0'00" AFF	FACM	FIRE ALARM CONTROL PANEL
1	PANIC BUTTON	FAL	FIRE ALARM CONTROL MODULE
2	TELE-POWER POLE	FPS	FIELD CHARGER POWER SUPPLY
3	RELAY	FSEC	FIRE SERVICE EQUIPMENT CONTRACTOR
4	REQUEST TO RELEASE ACTUATOR	GND	GROUND
5	VOLUING CONTROL 0'00" AFF	GR	GROUND FAULT CIRCUIT INTERRUPTER
6	FIRE ALARM PULL STATION 0'00" AFF TO TOP	GCC	GRABCO COMMAND CENTER
7	FIRE ALARM FLASHING STROBE LIGHT 0'00" AFF TO BOTTOM OR 6" BELOW CEILING	HA	HIGH ABOVE/SECURITY CEILING WALL PLATE
8	CEILING MOUNT FIRE ALARM FLASHING STROBE LIGHT	HAZ	HAZARDOUS LOCATION
9	FIRE ALARM HORN FLASHING STROBE LIGHT 0'00" AFF TO BOTTOM OR 6" BELOW CEILING	HPS	HIGH PRESSURE SODIUM
10	CEILING MOUNT FIRE ALARM HORN AND FLASHING STROBE LIGHT	HVAC	HEATING, VENTILATION & AIR CONDITIONING
11	FIRE ALARM SPEAKER AND FLASHING STROBE LIGHT 0'00" AFF TO BOTTOM OR 6" BELOW CEILING	KAC	THROUGHS AMPS INTERRUPTING CAPACITY
12	CEILING MOUNT FIRE ALARM SPEAKER AND FLASHING STROBE LIGHT	KVA	KILOVOLTS AMPERES
13	FIRE ALARM HORN 0'00" AFF TO BOTTOM OR 6" BELOW CEILING	KLD	KILOAMPS
14	FIRE ALARM SPEAKER AND FLASHING STROBE LIGHT 0'00" AFF TO BOTTOM OR 6" BELOW CEILING	LED	LIGHT EMITTING DIODE
15	CEILING MOUNT FIRE ALARM SPEAKER AND FLASHING STROBE LIGHT	MEA	MINIMUM CIRCUIT AMPACITY
16	FIRE ALARM HORN 0'00" AFF TO BOTTOM OR 6" BELOW CEILING	MEM	THROUGH CIRCUAR MILS
17	FIRE ALARM BELL 0'00" AFF TO BOTTOM OR 6" BELOW CEILING	MTL	METAL BULB
18	SMOKE DETECTOR	MOPR	MAXIMUM OVER CURRENT PROTECTION
19	THERMAL HEAT DETECTOR	NFC	NATIONAL FIRE PROTECTION ASSOCIATION
20	WATER FLOW SWITCH	NL	NIGHT LIGHT
21	TAMPER SWITCH	P	POLY(VINYL CHLORIDE NON METALLIC) RACEWAY
22	POST INDICATOR VALVE	P	INDICATES ITEM TO BE RELOCATED
23	SINGLE BELL CALL LIGHT	RSD	RIGID GALVANIZED STEEL CONDUIT
24	DOUBLE BELL CALL LIGHT	RSC	RIGID STEEL CONDUIT
25	CLOSED CIRCUIT TELEVISION CAMERA	SPD	SPICE PROTECTIVE DEVICE
26	DOOR CHIME 0'00" AFF	SS	STAINLESS STEEL
27	SURFACE MOUNT, LIGHTING & APPLIANCE PANELBOARD 0'00" AFF TO TOP - LETTER INDICATES REGISTRATION - HATING INDICATES REQUIRED CLEARANCE	TEL	TELEPHONE
28	FLOURI MOUNT, LIGHTING & APPLIANCE PANELBOARD 0'00" AFF TO TOP - LETTER INDICATES REGISTRATION - HATING INDICATES REQUIRED CLEARANCE	TR	TAMPER RESISTANT
29	POWER DISTRIBUTION PANELBOARD - LETTER INDICATES REGISTRATION - HATING INDICATES REQUIRED CLEARANCE	TV	TELEVISION
30	HORN/SM - LETTER INDICATES PANELBOARD - NUMBER INDICATES CIRCUIT	V	VOLTS
31	CONDUIT IN WALL OR CEILING - SYMBOL REPRESENTS UNIDENTIFIED CIRCUIT	VA	VOLT-AMPERES
32	DATA RACEWAY	VFD	VARIABLE FREQUENCY DRIVE
33	DATA & TELEPHONE RACEWAY	W	WALLS
34	EMERGENCY CIRCUIT	WG	WIRE GUARD
35	FIBER OPTICS RACEWAY	WP	WEATHERPROOF
36	GENERATOR POWER OUTPUT	YTHR	TRANSFORMER
37	OVERHEAD SECONDARY ELECTRICAL SERVICE		
38	TELEPHONE RACEWAY		
39	CONDUIT TO BE CONCEALED UNDER FLOOR		
40	UNDERGROUND TELEPHONE		
41	UNDERGROUND PRIMARY ELECTRICAL SERVICE		
42	UNDERGROUND SECONDARY ELECTRICAL SERVICE		
43	CONDUIT OR RACEWAY TO BE REMOVED		
44	SMOKE DAMPER		
45	FIRE/SMOKE DAMPER		

## DEMOLITION GENERAL NOTES






DEMOLITION GENERAL NOTES

- [illegible]

### PROJECT GENERAL NOTES

- A. ALL SITES REQUESTED IN CAD (250)0 FORMAT SHALL BE PROVIDED IN CAD 2009 AT A CHARGE OF \$250/HECTARE (MINIMUM \$250 FOR EACH CHARGE). THE CHARGE IS TO COVER THE COST OF THE CAD FILES, CONTRACTORS AND FOR LIGHTING FIXTURE MANUFACTURER. THE CHARGE IS TO BE CHARGED TO THE CLIENT. THE CHARGE IS TO BE CHARGED \$250/HECTARE (MINIMUM \$250) PRIOR TO TRANSFERRED OF PLANS TO THE CLIENT. THE CLIENT MUST SIGN AND RETURN "DISCLOSURE OF LIABILITY" TO THE AESTAS.
- B. THE ENTIRE INSTALLATION SHALL IN THE CONSTRUCTION DOCUMENTS BE THE RESPONSIBILITY OF THE ARCHITECT. THE ARCHITECT SHALL BE RESPONSIBLE FOR ALL SITES REQUESTED IN CAD (250)0 FORMAT SHALL BE PROVIDED IN CAD 2009 AT A CHARGE OF \$250/HECTARE (MINIMUM \$250 FOR EACH CHARGE). THE CHARGE IS TO COVER THE COST OF THE CAD FILES, CONTRACTORS AND FOR LIGHTING FIXTURE MANUFACTURER. THE CHARGE IS TO BE CHARGED TO THE CLIENT. THE CHARGE IS TO BE CHARGED \$250/HECTARE (MINIMUM \$250) PRIOR TO TRANSFERRED OF PLANS TO THE CLIENT. THE CLIENT MUST SIGN AND RETURN "DISCLOSURE OF LIABILITY" TO THE AESTAS.
- C. DRAWINGS ARE LARGELY SCHEMATIC IN NATURE AND SHALL BE USED AS A GUIDE ONLY. THE ARCHITECT SHALL BE RESPONSIBLE FOR ALL SITES REQUESTED IN CAD (250)0 FORMAT SHALL BE PROVIDED IN CAD 2009 AT A CHARGE OF \$250/HECTARE (MINIMUM \$250 FOR EACH CHARGE). THE CHARGE IS TO COVER THE COST OF THE CAD FILES, CONTRACTORS AND FOR LIGHTING FIXTURE MANUFACTURER. THE CHARGE IS TO BE CHARGED TO THE CLIENT. THE CHARGE IS TO BE CHARGED \$250/HECTARE (MINIMUM \$250) PRIOR TO TRANSFERRED OF PLANS TO THE CLIENT. THE CLIENT MUST SIGN AND RETURN "DISCLOSURE OF LIABILITY" TO THE AESTAS.
- D. ALL EQUIPMENT SHALL BE THOROUGHLY CLEANED AND ALL BASE SCREWS OR HARNER AREAS SHALL BE PAINTED WITH FACTORY FINISH. THE ARCHITECT SHALL BE RESPONSIBLE FOR ALL SITES REQUESTED IN CAD (250)0 FORMAT SHALL BE PROVIDED IN CAD 2009 AT A CHARGE OF \$250/HECTARE (MINIMUM \$250 FOR EACH CHARGE). THE CHARGE IS TO COVER THE COST OF THE CAD FILES, CONTRACTORS AND FOR LIGHTING FIXTURE MANUFACTURER. THE CHARGE IS TO BE CHARGED TO THE CLIENT. THE CHARGE IS TO BE CHARGED \$250/HECTARE (MINIMUM \$250) PRIOR TO TRANSFERRED OF PLANS TO THE CLIENT. THE CLIENT MUST SIGN AND RETURN "DISCLOSURE OF LIABILITY" TO THE AESTAS.
- E. IN A MAJOR SUSTAINABLE TO THE OWNER'S REPRESENTATIVE, TOUCH-ON REFINISH FACTORY-APPLIED PAINTS OR FINISHES WHICH ARE NOT RECOMMENDED BY THE ARCHITECT. THE ARCHITECT SHALL BE RESPONSIBLE FOR ALL SITES REQUESTED IN CAD (250)0 FORMAT SHALL BE PROVIDED IN CAD 2009 AT A CHARGE OF \$250/HECTARE (MINIMUM \$250 FOR EACH CHARGE). THE CHARGE IS TO COVER THE COST OF THE CAD FILES, CONTRACTORS AND FOR LIGHTING FIXTURE MANUFACTURER. THE CHARGE IS TO BE CHARGED TO THE CLIENT. THE CHARGE IS TO BE CHARGED \$250/HECTARE (MINIMUM \$250) PRIOR TO TRANSFERRED OF PLANS TO THE CLIENT. THE CLIENT MUST SIGN AND RETURN "DISCLOSURE OF LIABILITY" TO THE AESTAS.
- F. THE CONTRACTOR SHALL BE RESPONSIBLE FOR CLEAN UP DURING AND AFTER THE CONSTRUCTION. NO MATERIALS SHALL BE LEFT ON SITE WHEN WORK IS COMPLETED, UNLESS OTHERWISE SPECIFIED BY THE ARCHITECT. THE ARCHITECT SHALL BE RESPONSIBLE FOR ALL SITES REQUESTED IN CAD (250)0 FORMAT SHALL BE PROVIDED IN CAD 2009 AT A CHARGE OF \$250/HECTARE (MINIMUM \$250 FOR EACH CHARGE). THE CHARGE IS TO COVER THE COST OF THE CAD FILES, CONTRACTORS AND FOR LIGHTING FIXTURE MANUFACTURER. THE CHARGE IS TO BE CHARGED TO THE CLIENT. THE CHARGE IS TO BE CHARGED \$250/HECTARE (MINIMUM \$250) PRIOR TO TRANSFERRED OF PLANS TO THE CLIENT. THE CLIENT MUST SIGN AND RETURN "DISCLOSURE OF LIABILITY" TO THE AESTAS.

---

	(ACT) ACOUSTICAL PANEL CEILING SYSTEM
	(SGW) SUSPENDED GYPSUM WALL BOARD CEILING
	(OTS) OPEN TO STRUCTURE
	(PMC) PERFORATED METAL CEILING
	(CON) CONCRETE CEILING





ADVANCED  
ENGINEERING  
SYSTEMS

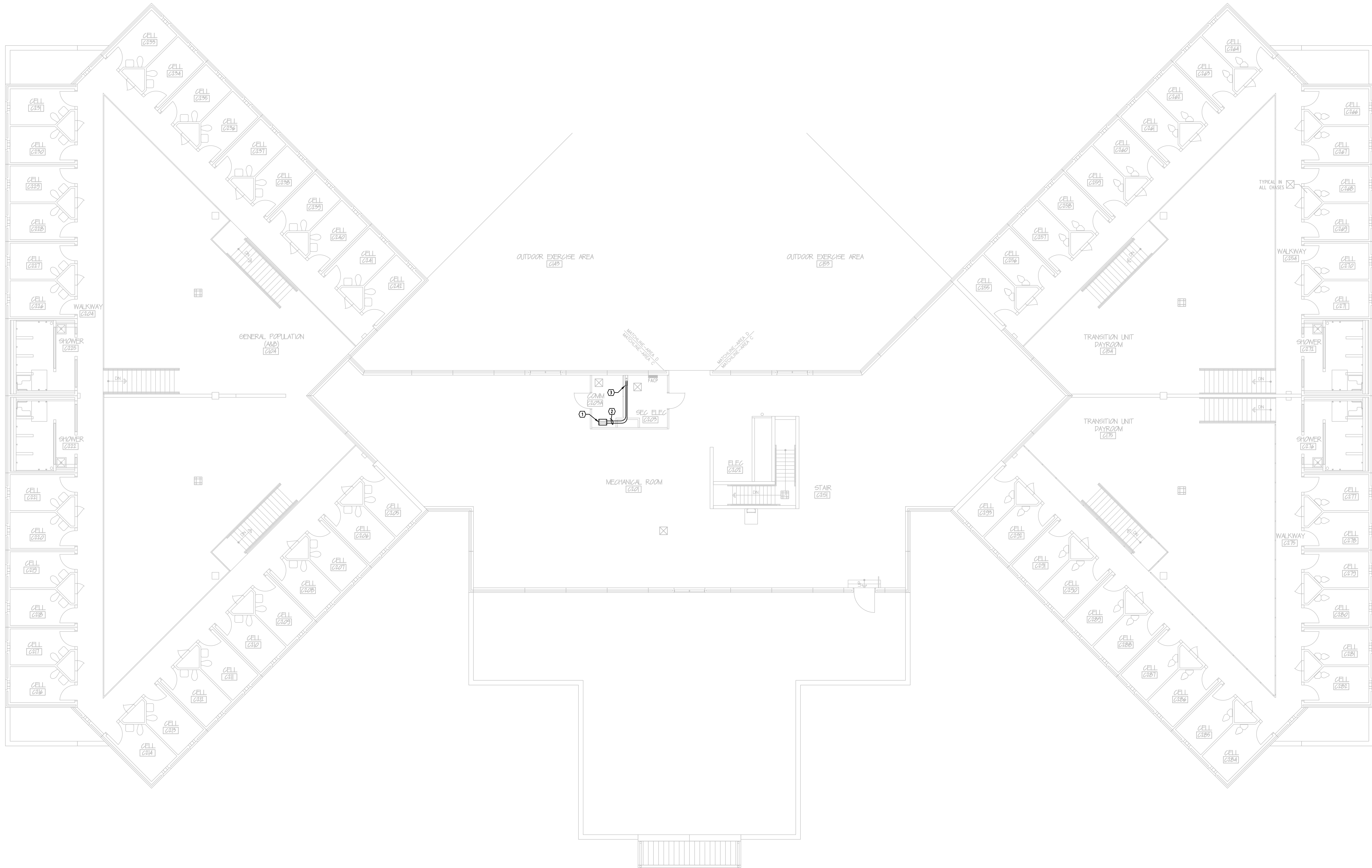
4630 ANTELOPE CREEK RD  
SUITE 200  
LINCOLN, NE 68506  
P: (402) 488-0075  
F: (402) 488-0272  
WWW.A-E-SYS.COM

© ADVANCED ENGINEERING SYSTEMS  
CERTIFICATE OF  
AUTHORIZATION #: CA1800  
PROJECT #: 23152

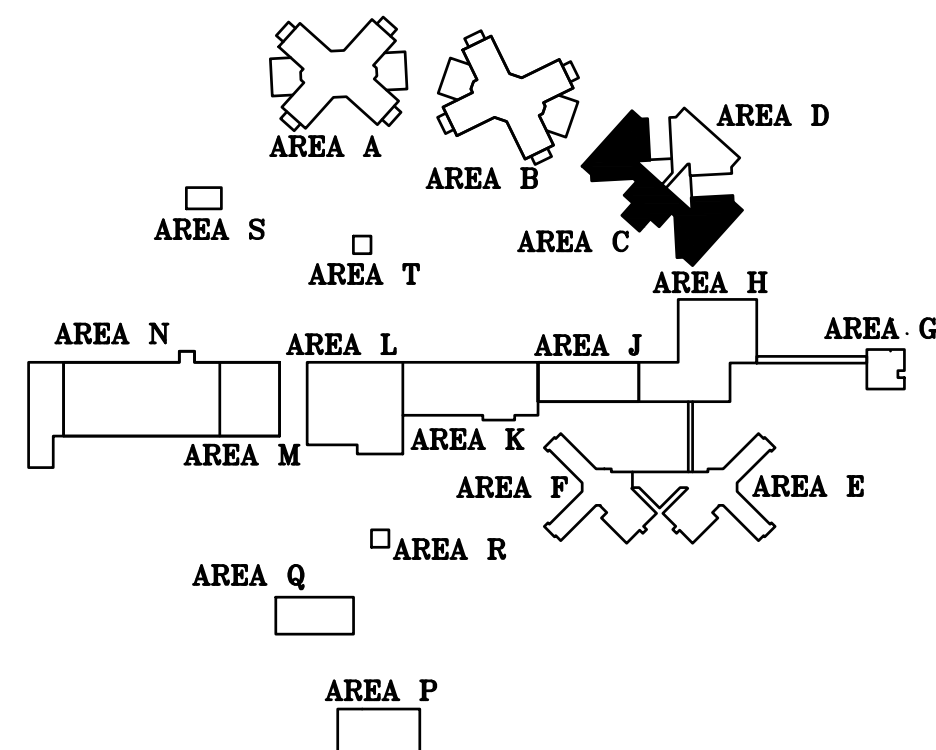
KEY NOTES

SYMBOL =

1. PROVIDE RACK MOUNTED FIBER PATCH PANEL WITH SLIDING TRAY, CABLE MANAGEMENT, AND CASSETTES WITH 48 LC CONNECTOR, 190, AND APPOINTANCES. REFER TO DETAILS D01 AND D04 ON SHEET E200.
2. SECURELY FASTEN FIBER TO WALL AND/OR CEILING TO SPLICE CASSETTES.
3. EXISTING GUTTER WITH CONDUITS FROM HANGAR.



HOUSING UNIT 3, AREA C, SECOND LEVEL  
SCALE: 1/8" = 1'-0"



KEYPLAN  
SCALE: NOT TO SCALE

No.	Issued For	Date
1	ADDENDUM #1	04/05/2024

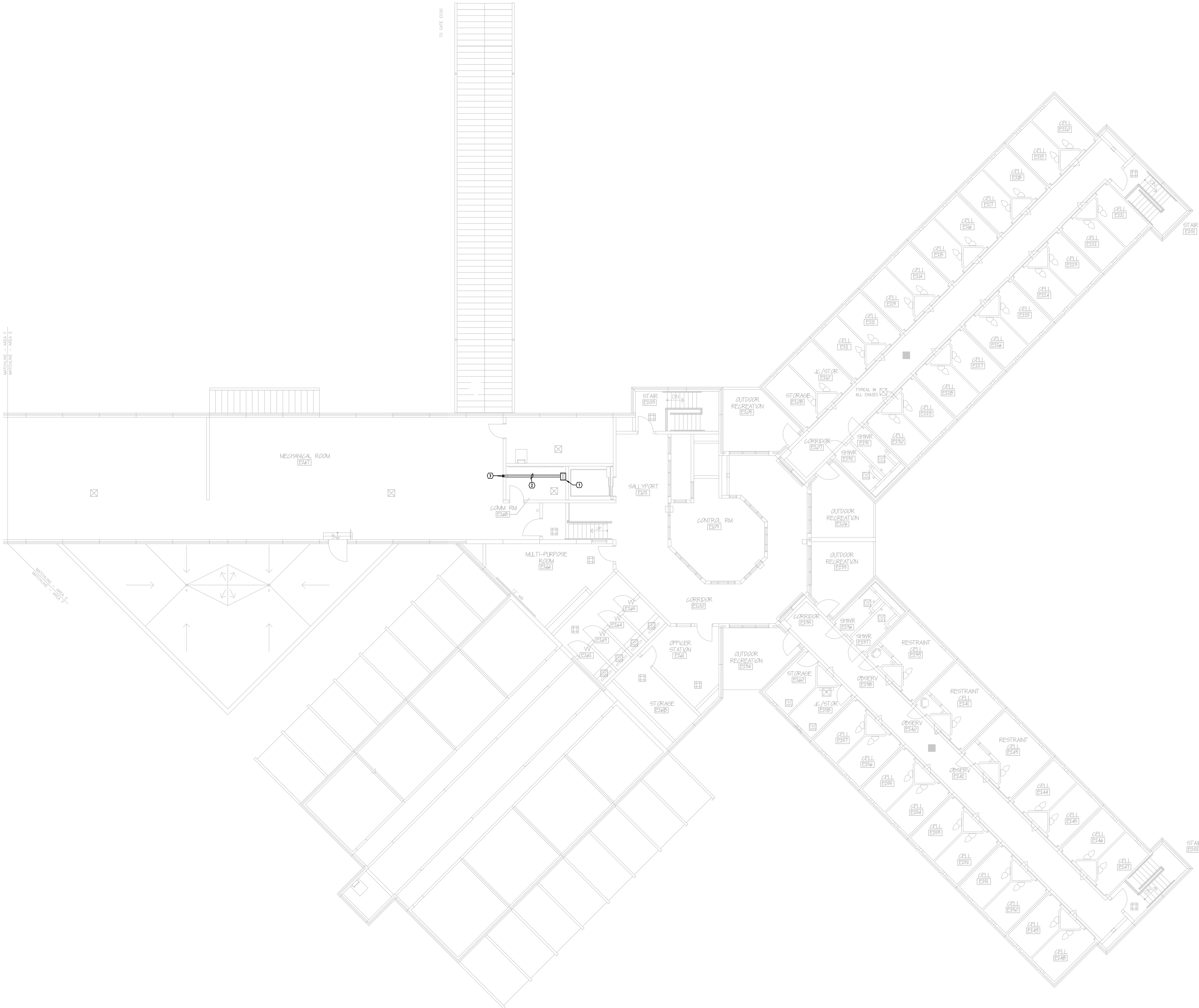
DATE: 03/12/2024



HOUSING UNIT 1  
SECOND LEVEL FIBER  
CABLING

E1.02





- KEY NOTES** SYMBOL = (Q)
1. PROVIDE RACK MOUNTED FIBER PATCH PANEL WITH SLIDING TRAY, CABLE MANAGEMENT, AND CASSETTES WITH 48 LC CONNECTOR, 190, AND AMPUTANCES. REFER TO DETAILS D01 AND D04 ON SHEET E200.
  2. SECURELY FASTEN FIBER TO WALL AND OR CEILING TO SPLICE CASSETTES.
  3. EXISTING CONDUITS FROM HANGAR.

**AES**  
ADVANCED  
ENGINEERING  
SYSTEMS

4630 ANTELOPE CREEK RD  
SUITE 200  
LINCOLN, NE 68506  
P: (402) 488-0075  
F: (402) 488-0272  
WWW.A-E-SYS.COM

© ADVANCED ENGINEERING SYSTEMS  
CERTIFICATE OF  
AUTHORIZATION #: CA1800  
PROJECT #: 23152

TECUMSEH STATE CORRECTIONAL INSTITUTION  
FIBER CABLE REPLACEMENT  
2725 NE-50,  
TECUMSEH, NEBRASKA 68450

No.	Issued For	Date
1	ADDENDUM #1	04/05/2024

DATE: 03/12/2024



SMU AREA E SECOND  
LEVEL FIBER CABLING

**E1.04**





ADVANCED  
ENGINEERING  
SYSTEMS

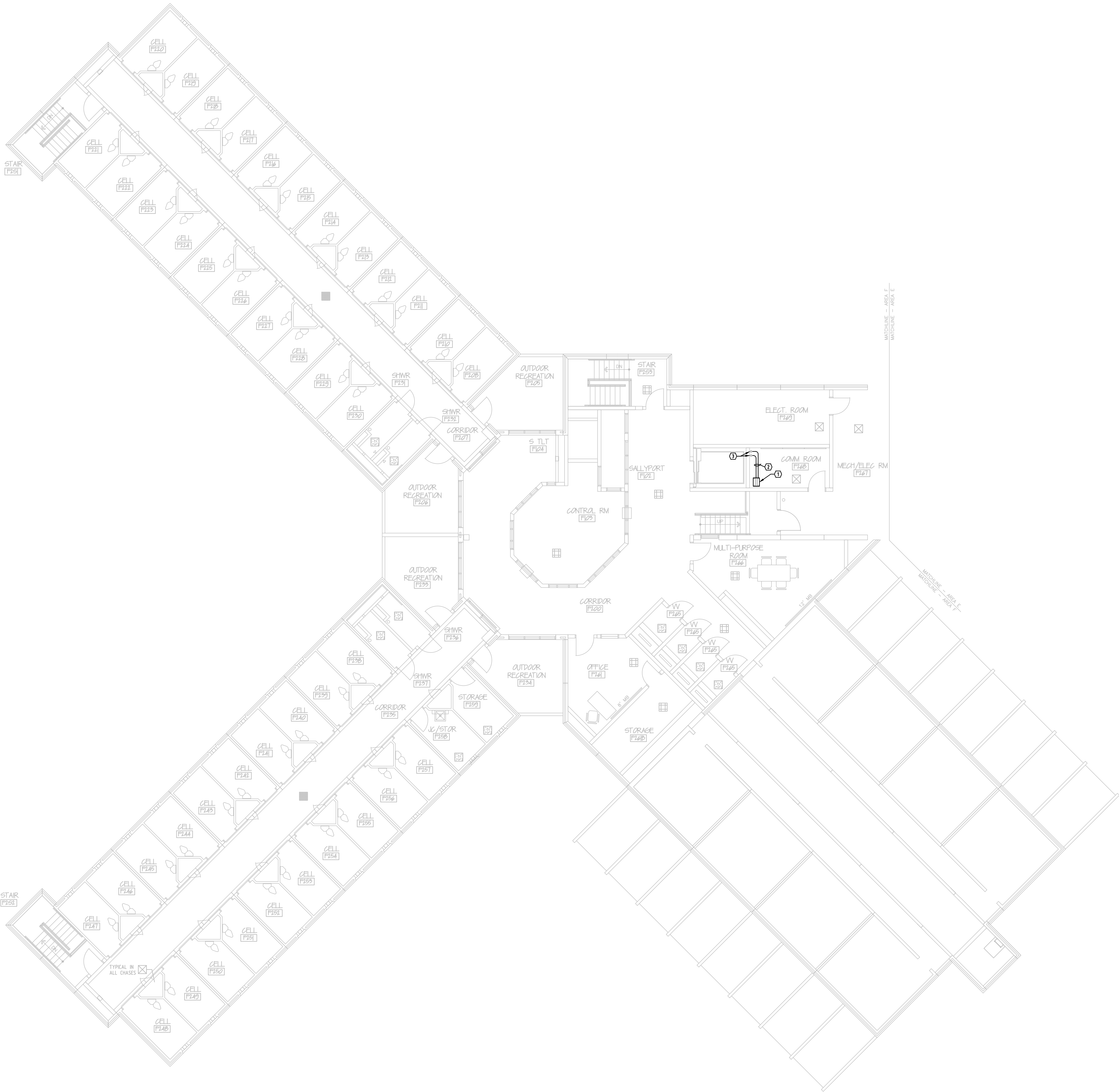
4630 ANTELOPE CREEK RD  
SUITE 200  
LINCOLN, NE 68506  
P: (402) 488-0075  
F: (402) 488-0272  
WWW.A-E-SYS.COM

CERTIFICATE OF  
AUTHORIZATION #: CA1800  
PROJECT #: 23152

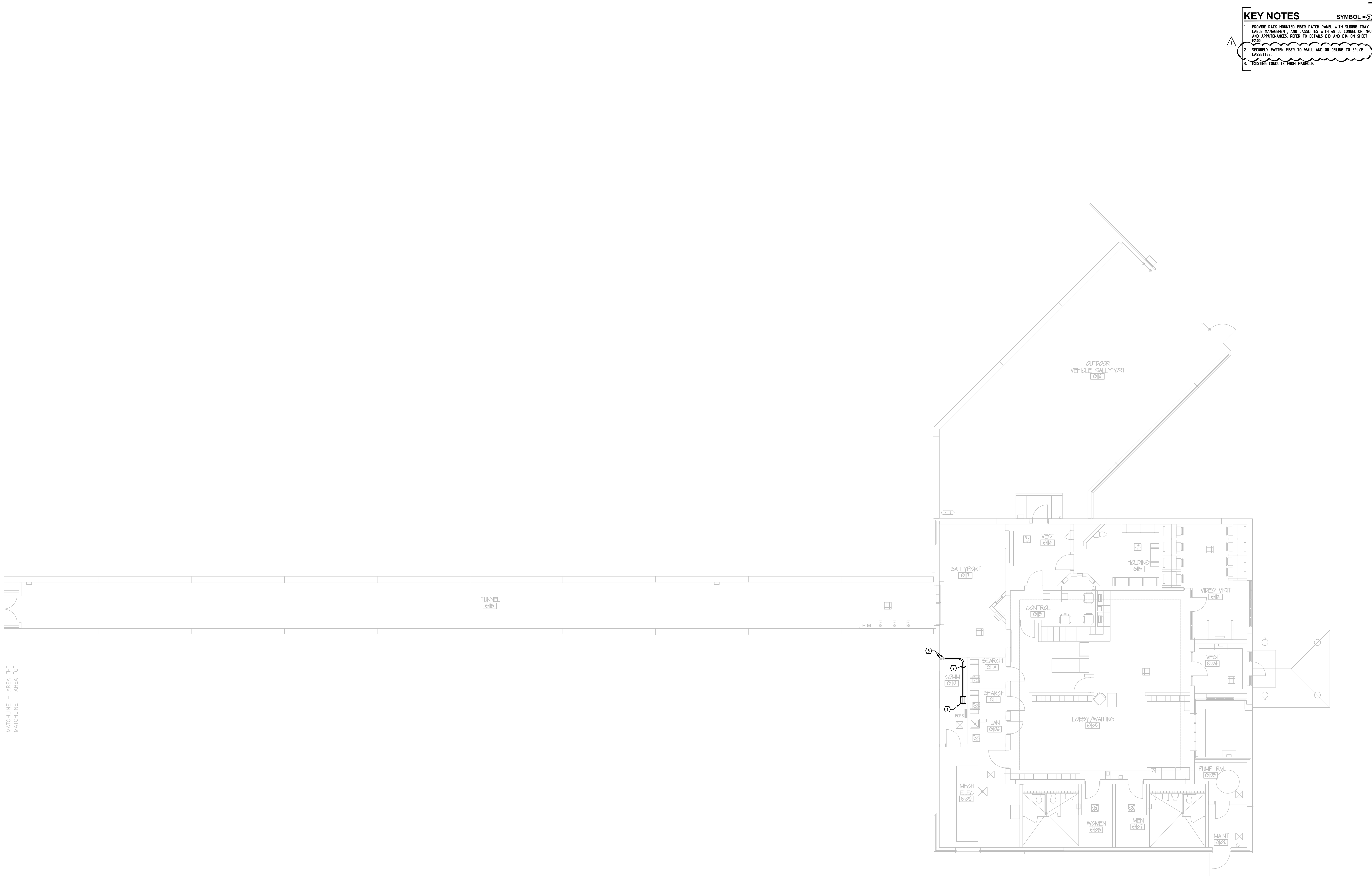
KEY NOTES

SYMBOL =

1. PROVIDE RACK MOUNTED FIBER PATCH PANEL WITH SLIDING TRAY, CABLE MANAGEMENT, AND CASSETTES WITH 48 LC CONNECTOR, 19U, AND APPOINTANCES. REFER TO DETAILS D01 AND D04 ON SHEET E200.
2. SECURELY FASTEN FIBER TO WALL AND/OR CEILING TO SPLICE CASSETTES.
3. EXISTING CONDUITS FROM HANGAR.







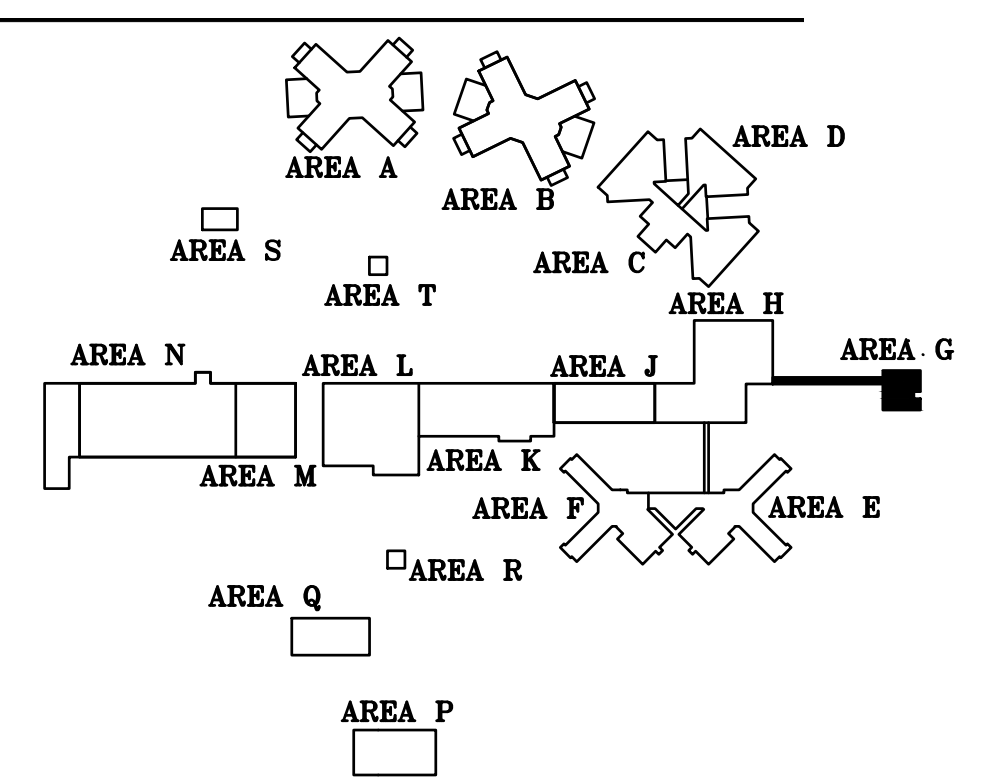
- KEY NOTES
- SYMBOL = (Q)
1. PROVIDE RACK MOUNTED FIBER PATCH PANEL WITH SLIDING TRAY, CABLE MANAGEMENT, AND CASSETTES WITH 48 LC CONNECTOR, 190, AND APPOINTANCES. REFER TO DETAILS D01 AND D04 ON SHEET E200.

2. SECURELY FASTEN FIBER TO WALL AND/OR CEILING TO SPLICE CASSETTES.

3. EXISTING CONDUITS FROM MANHOLE.

GATEHOUSE/TUNNEL, AREA G

SCALE: 1/8" = 1'-0"



KEYPLAN

SCALE: NOT TO SCALE



ADVANCED  
ENGINEERING  
SYSTEMS

4630 ANTELOPE CREEK RD  
SUITE 200  
LINCOLN, NE 68506  
P: (402) 488-0075  
F: (402) 488-0272  
[www.a-e-sys.com](http://www.a-e-sys.com)

© ADVANCED ENGINEERING SYSTEMS  
CERTIFICATE OF  
AUTHORIZATION #: CA1800  
PROJECT #: 23152

TECUMSEH STATE CORRECTIONAL INSTITUTION  
FIBER CABLE REPLACEMENT  
2725 NE-50,  
TECUMSEH, NEBRASKA 68450

No.	Issued For	Date
1	ADDENDUM #1	04/05/2024

DATE: 03/12/2024



GATEHOUSE/TUNNEL  
FIBER CABLING





ADVANCED  
ENGINEERING  
SYSTEMS

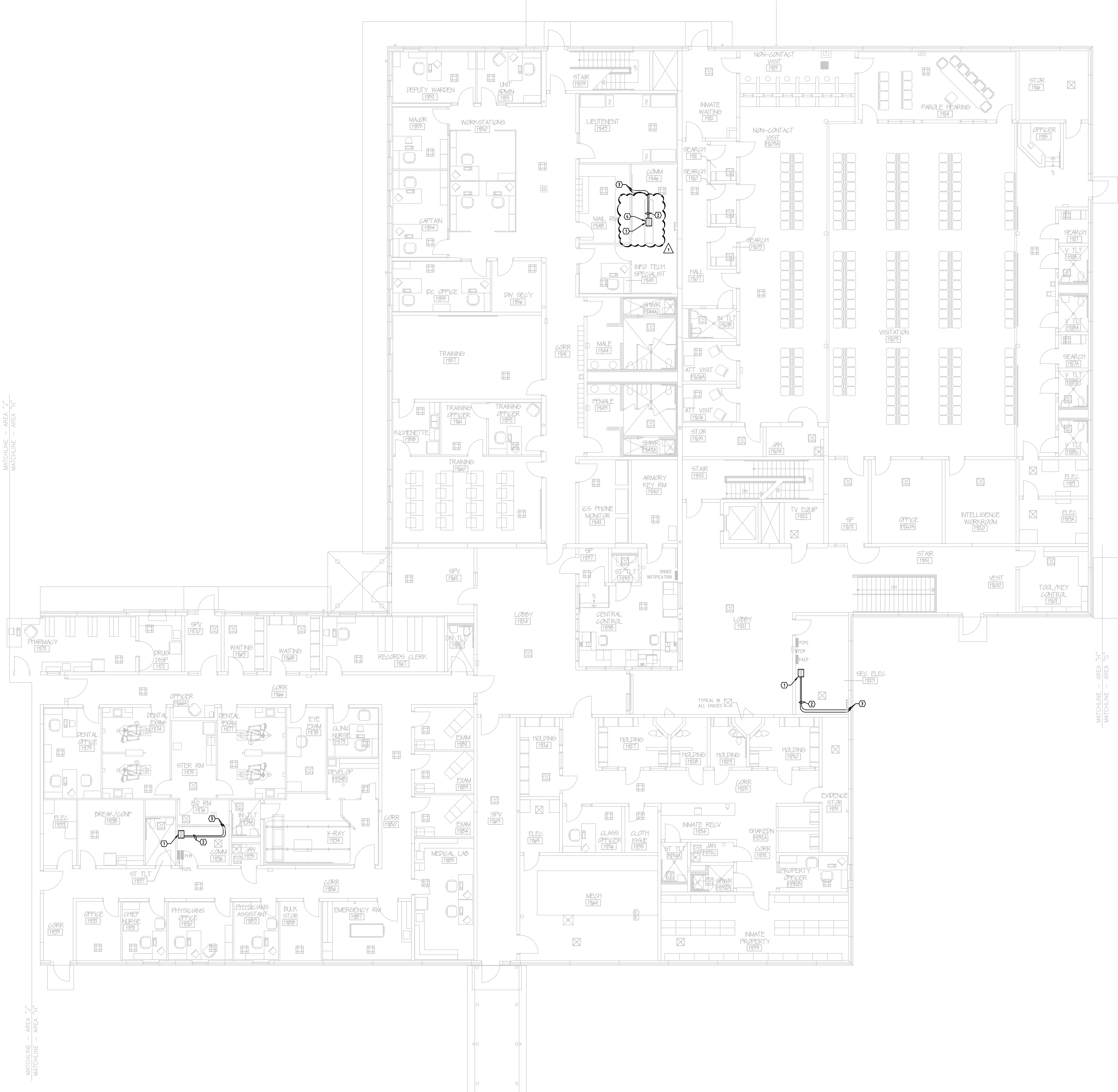
4630 ANTELOPE CREEK RD  
SUITE 200  
LINCOLN, NE 68506  
P: (402) 488-0075  
F: (402) 488-0272  
www.a-e-sys.com

© ADVANCED ENGINEERING SYSTEMS  
CERTIFICATE OF  
AUTHORIZATION #: CA1800  
PROJECT #: 23152

# KEY NOTES

SYMBOL = (C)

1. PROVIDE RACK MOUNTED FIBER PATCH PANEL WITH SLIDING TRAY, CABLE MANAGEMENT, AND CASSETTES WITH 48 LC CONNECTOR, 10U, AND APPOINTANCES. REFER TO DETAILS D01 AND D04 ON SHEET E200.
2. SECURELY FASTEN FIBER TO WALL AND/OR CEILING TO SPLICE CASSETTES.
3. LOCATE CONDUITS FROM HALLWAYS.
4. UTILIZE CENTER RACK FOR FIBER SPLICE CASSETTES.



MATCHLINE - AREA "J"  
MATCHLINE - AREA "H"

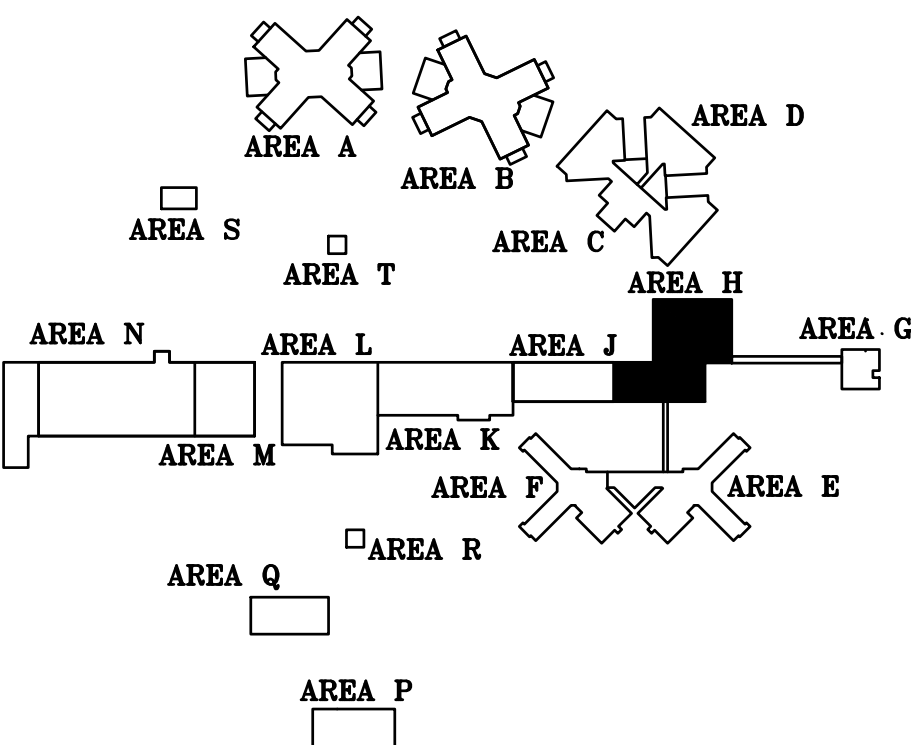
MATCHLINE - AREA "H"  
MATCHLINE - AREA "G"

MATCHLINE - AREA "J"  
MATCHLINE - AREA "H"



ADMINISTRATION BUILDING, AREA H, FIRST LEVEL

SCALE: 1/8" = 1'-0"



KEYPLAN  
SCALE: NOT TO SCALE

No.	Issued For	Date
1	ADDENDUM #1	04/05/2024

DATE: 03/12/2024



ADMINISTRATION  
BUILDING FIRST LEVEL  
FIBER CABLING

E1.07





ADVANCED  
ENGINEERING  
SYSTEMS

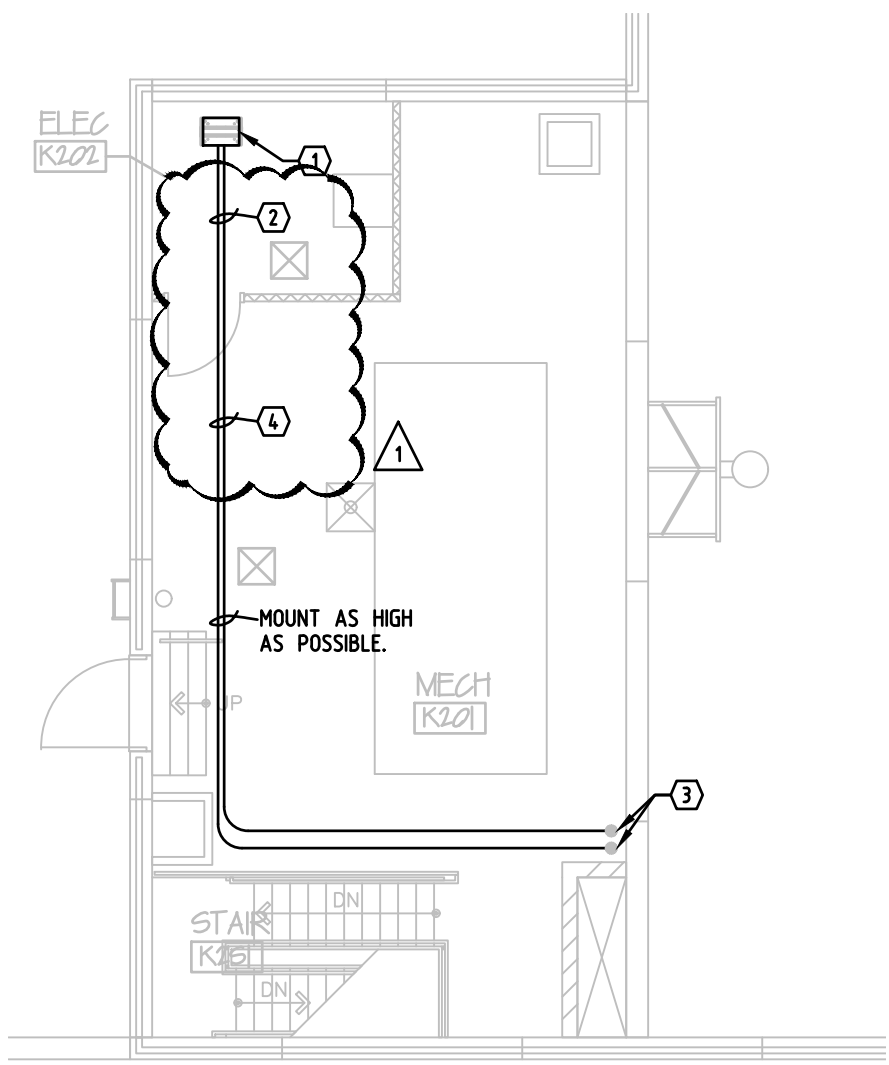
4630 ANTELOPE CREEK RD  
SUITE 200  
LINCOLN, NE 68506  
P: (402) 488-0075  
F: (402) 488-0272  
www.a-e-sys.com

© ADVANCED ENGINEERING SYSTEMS  
CERTIFICATE OF  
AUTHORIZATION #: CA1800  
PROJECT #: 23152

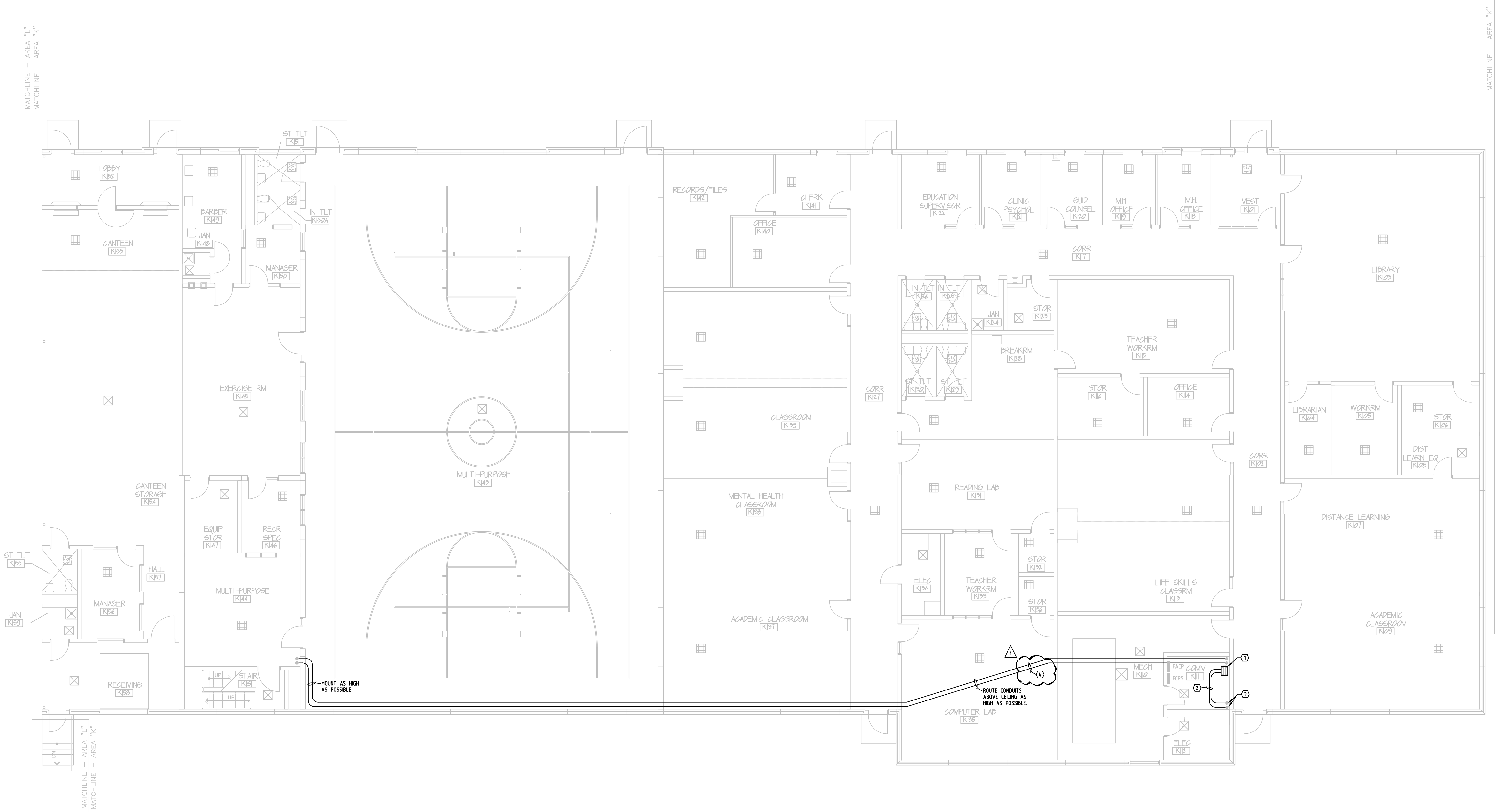
KEY NOTES

SYMBOL = (Q)

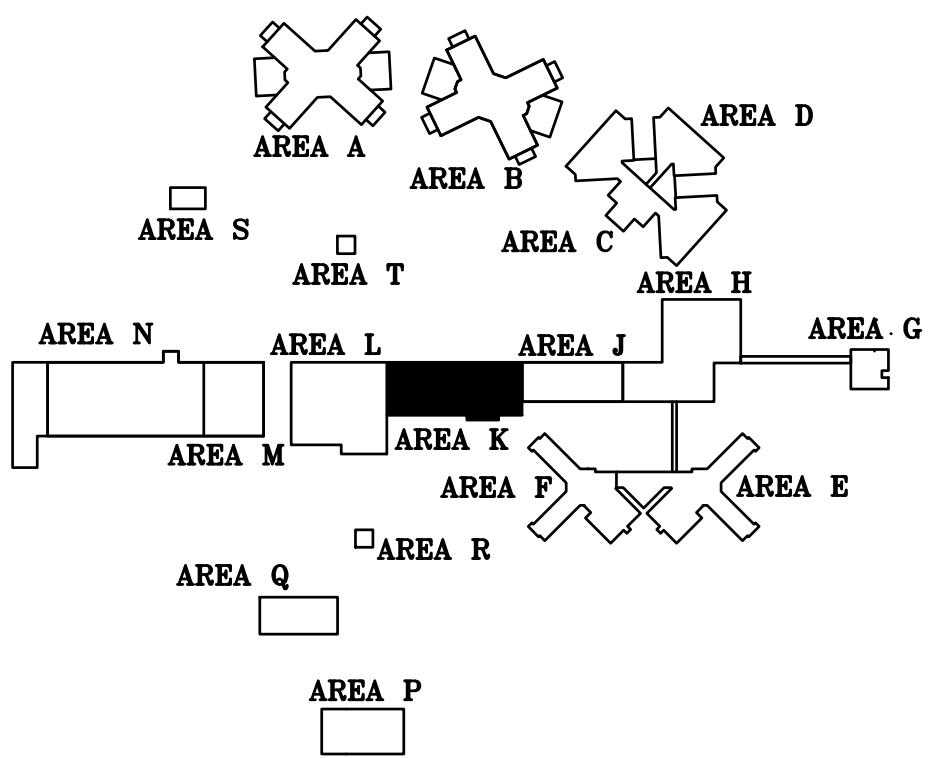
1. PROVIDE RACK MOUNTED FIBER PATCH PANEL WITH SLIDING TRAY, CABLE MANAGEMENT, AND CASSETTES WITH 48 LC CONNECTOR, 190, AND APPURTENANCES. REFER TO DETAILS D01 AND D04 ON SHEET E2.00.
2. SECURELY FASTEN FIBER TO WALL AND/OR CEILING TO SPLICE CASSETTES.
3. FIBER CONDUITS FROM HALLWAY VIA ROOF RTEL.
4. SEE RISER DIAGRAM, SHEET E2.01.



CENTRAL SERVICES BUILDING, AREA K, SECOND LEVEL  
SCALE: 1/8" = 1'-0"



CENTRAL SERVICES BUILDING, AREA K, FIRST LEVEL  
SCALE: 1/8" = 1'-0"



KEYPLAN  
SCALE: NOT TO SCALE

TECUMSEH STATE CORRECTIONAL INSTITUTION  
FIBER CABLE REPLACEMENT  
2725 NE-50,  
TECUMSEH, NEBRASKA 68450

No.	Issued For	Date
1	ADDENDUM #1	04/05/2024

DATE: 03/12/2024



CENTRAL SERVICES  
BUILDING FIRST LEVEL  
FIRE ALARM

E1.08





ADVANCED  
ENGINEERING  
SYSTEMS

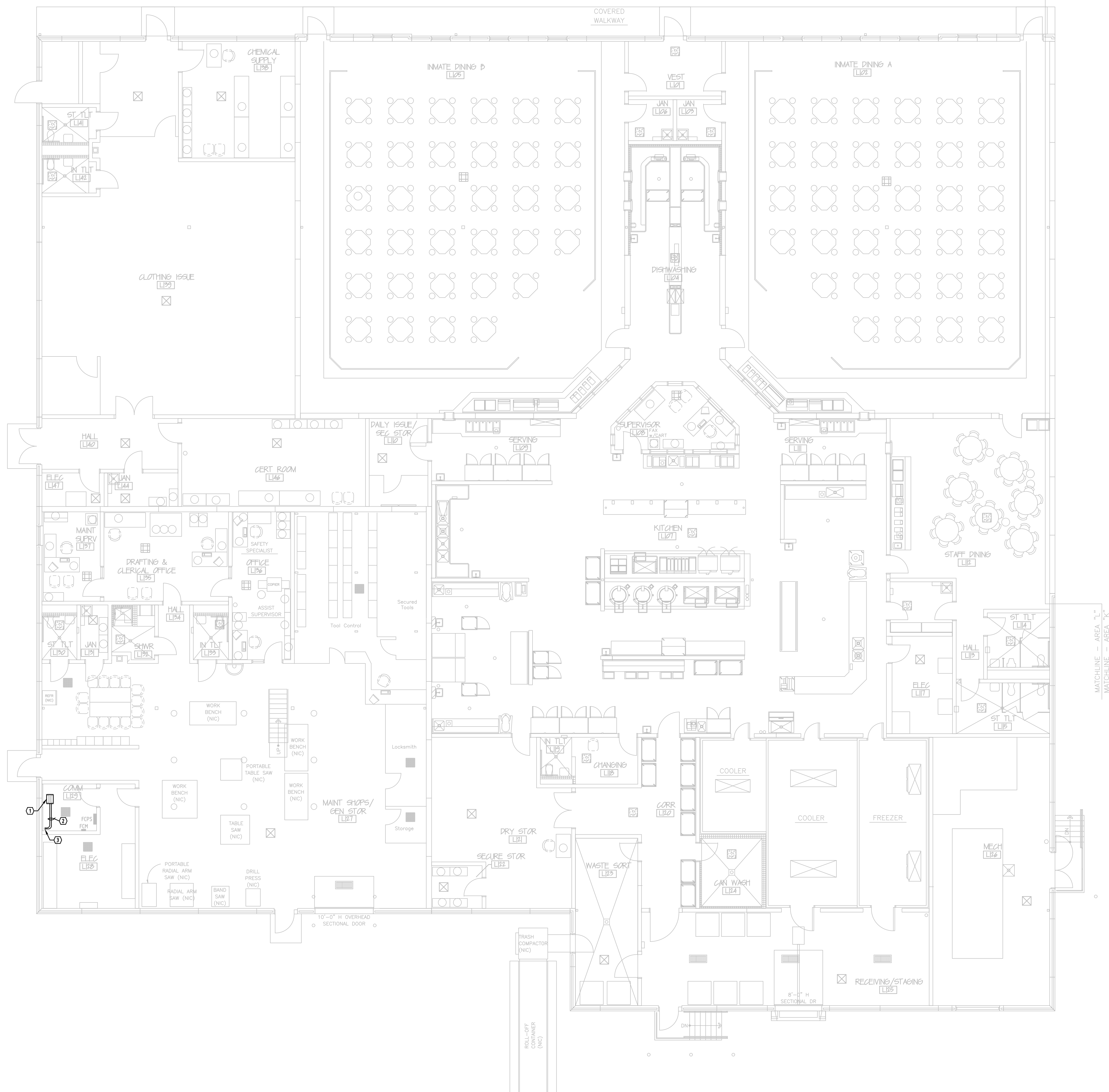
4630 ANTELOPE CREEK RD  
SUITE 200  
LINCOLN, NE 68506  
P: (402) 488-0075  
F: (402) 488-0272  
www.a-e-sys.com

CERTIFICATE OF  
AUTHORIZATION #: CA1800  
PROJECT #: 23152

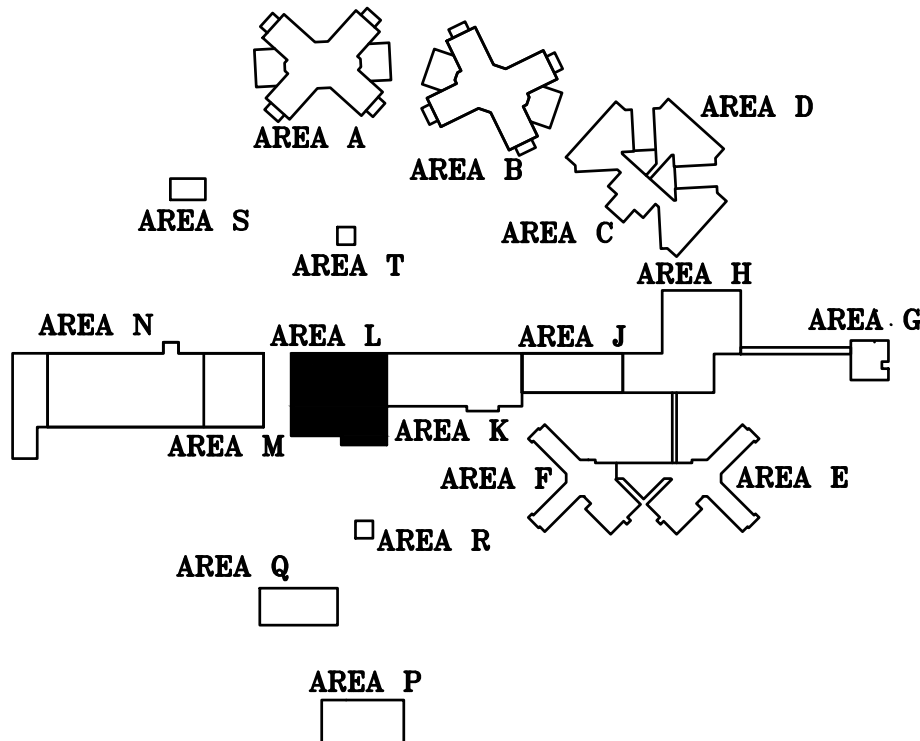
KEY NOTES

SYMBOL =

1. PROVIDE RACK MOUNTED FIBER PATCH PANEL WITH SLIDING TRAY, CABLE MANAGEMENT, AND CASSETTES WITH 48 LC CONNECTOR, 19U, AND APPOINTANCES. REFER TO DETAILS D01 AND D04 ON SHEET E200.
2. SECURELY FASTEN FIBER TO WALL AND/OR CEILING TO SPLICE CASSETTES.
3. EXISTING CONDUITS FROM HANGAR.



CENTRAL SERVICES BUILDING, AREA L, FIRST LEVEL  
SCALE: 1/8" = 1'-0"



KEYPLAN  
SCALE: NOT TO SCALE

No.	Issued For	Date
1	ADDENDUM #1	04/05/2024

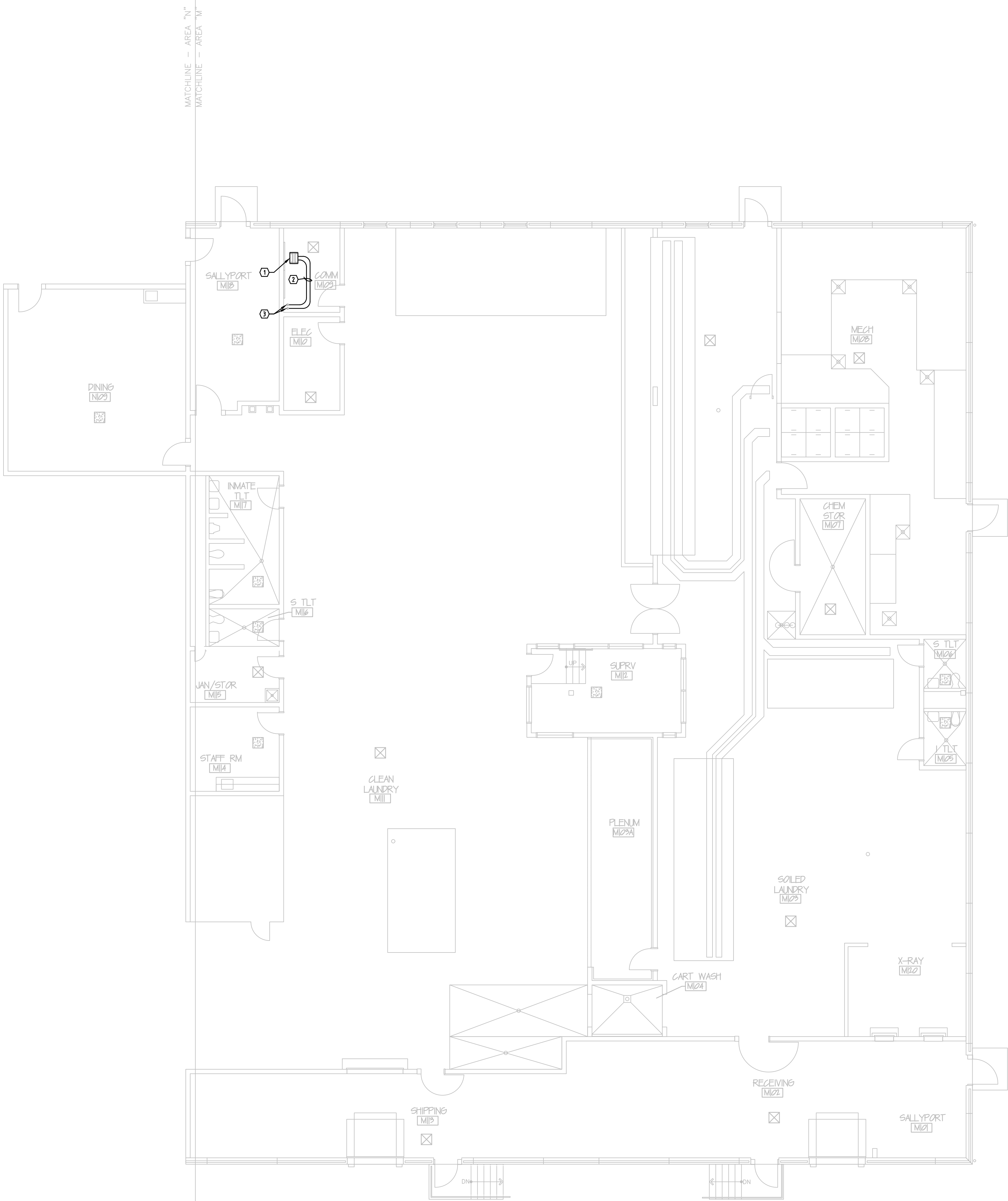
DATE: 03/12/2024



CENTRAL SERVICES  
BUILDING FIRST LEVEL  
FIBER CABLING

E1.09





KEY NOTES	SYMBOL =
1. PROVIDE RACK MOUNTED FIBER PATCH PANEL WITH SLIDING TRAY, CABLE MANAGEMENT, AND CASSETTES WITH 48 LC CONNECTOR, 19U, AND APPROPRIATE CABLE. REFER TO DETAILS D01 AND D02 ON SHEET E200.	
2. SECURELY FASTEN FIBER TO WALL AND/OR CEILING TO SPLICE CASSETTES.	
3. EXISTING CONDUITS FROM HANGAR.	



ADVANCED  
ENGINEERING  
SYSTEMS

4630 ANTELOPE CREEK RD  
SUITE 200  
LINCOLN, NE 68506  
P: (402) 488-0075  
F: (402) 488-0272  
[www.a-e-sys.com](http://www.a-e-sys.com)

© ADVANCED ENGINEERING SYSTEMS  
CERTIFICATE OF  
AUTHORIZATION #: CA1800  
PROJECT #: 23152

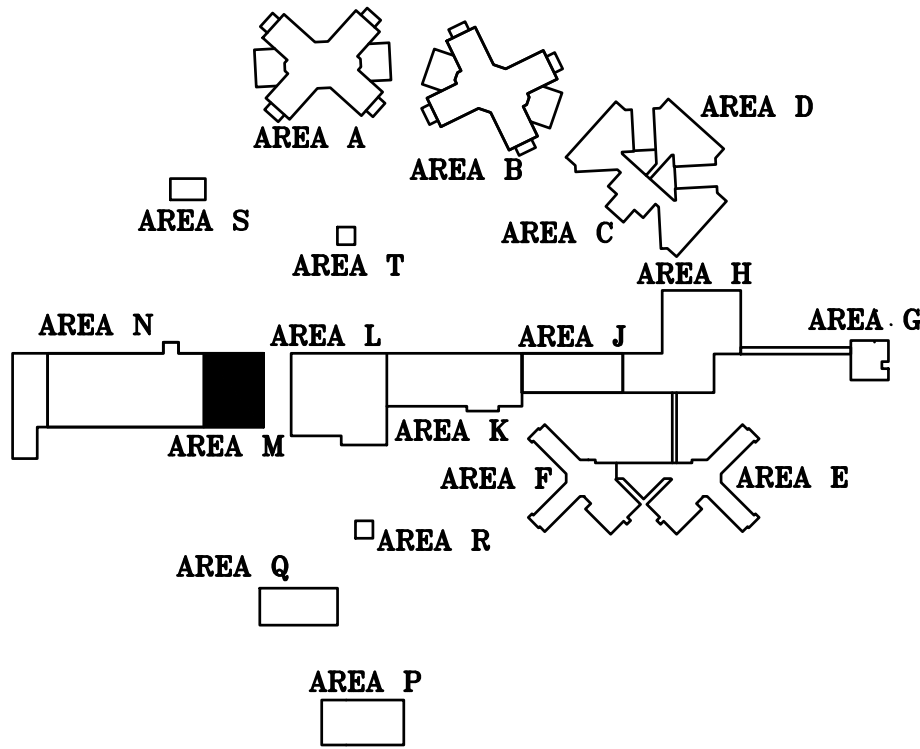
TECUMSEH STATE CORRECTIONAL INSTITUTION  
FIBER CABLE REPLACEMENT  
2725 NE-50,  
TECUMSEH, NEBRASKA 68450

No.	Issued For	Date
1	ADDENDUM #1	04/05/2024

DATE: 03/12/2024



CORRECTIONAL  
INDUSTRIES BUILDING  
FIRST LEVEL FIRE  
ALARM







4630 ANTELOPE CREEK RD  
SUITE 200  
LINCOLN, NE 68506  
P: (402) 488-0075  
F: (402) 488-0272  
[www.a-e-sys.com](http://www.a-e-sys.com)

© ADVANCED ENGINEERING SYSTEMS  
**CERTIFICATE OF**  
**AUTHORIZATION #: CA1800**  
**PROJECT #: 23152**

TECUMSEH STATE CORRECTIONAL INSTITUTION  
FIBER CABLE REPLACEMENT  
2725 NE-50,  
TECUMSEH, NEBRASKA 68450

No.	Issued For	Date
1	ADDENDUM #1	04/05/2024

DATE: 03/12/2024

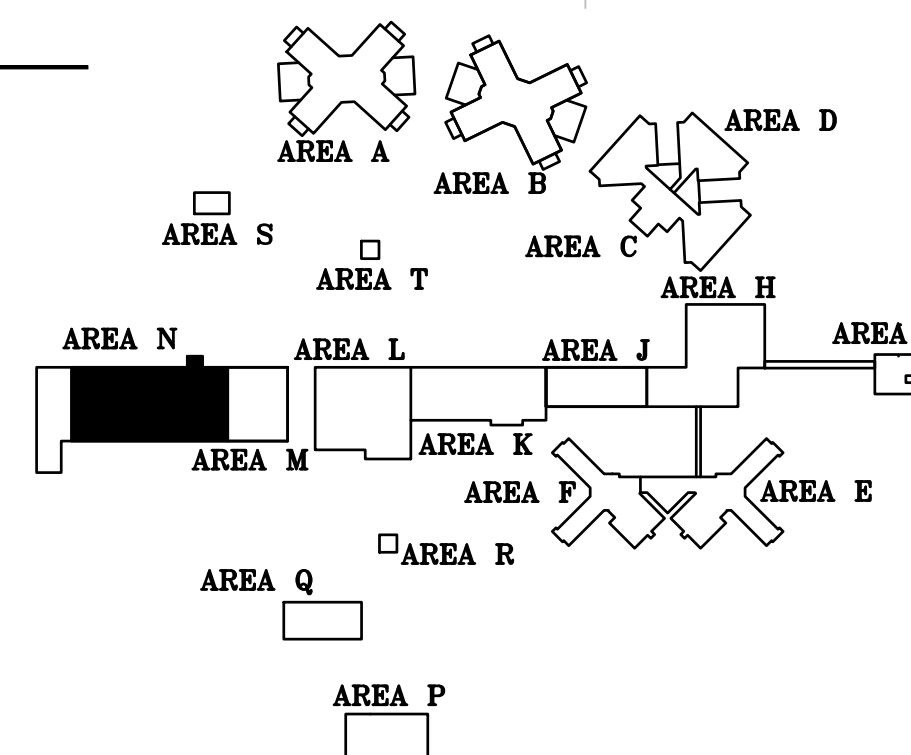


**CORRECTIONAL  
INDUSTRIES BUILDING  
FIRST LEVEL FIBER  
CABLING**

### ***E1.11***

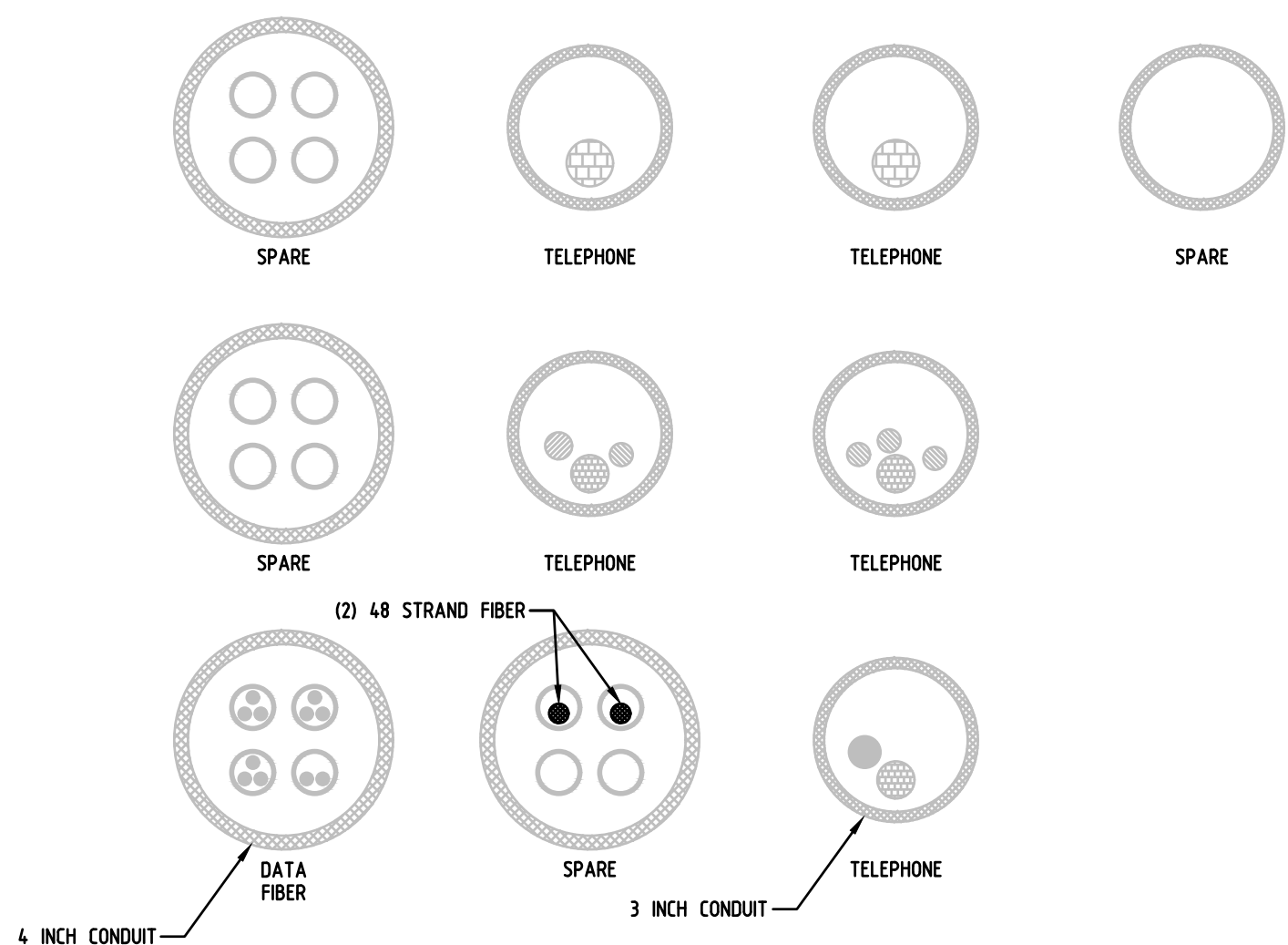
**CORRECTIONAL INDUSTRIES BUILDING, AREA N, FIRST LEVEL**

SCALE: 1/8" = 1'-0"

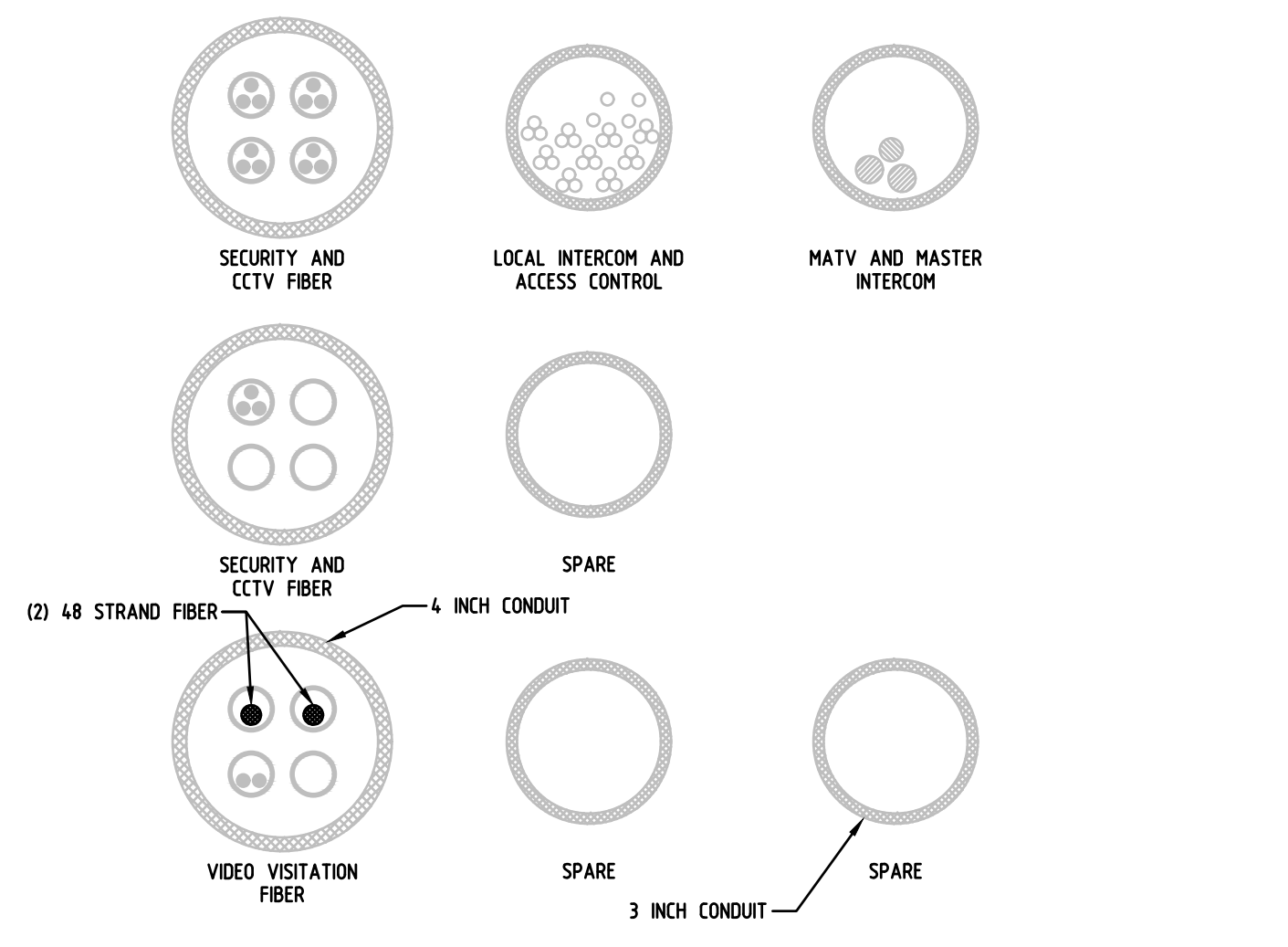


 **KEYPLAN**  
SCALE: NOT TO SCALE

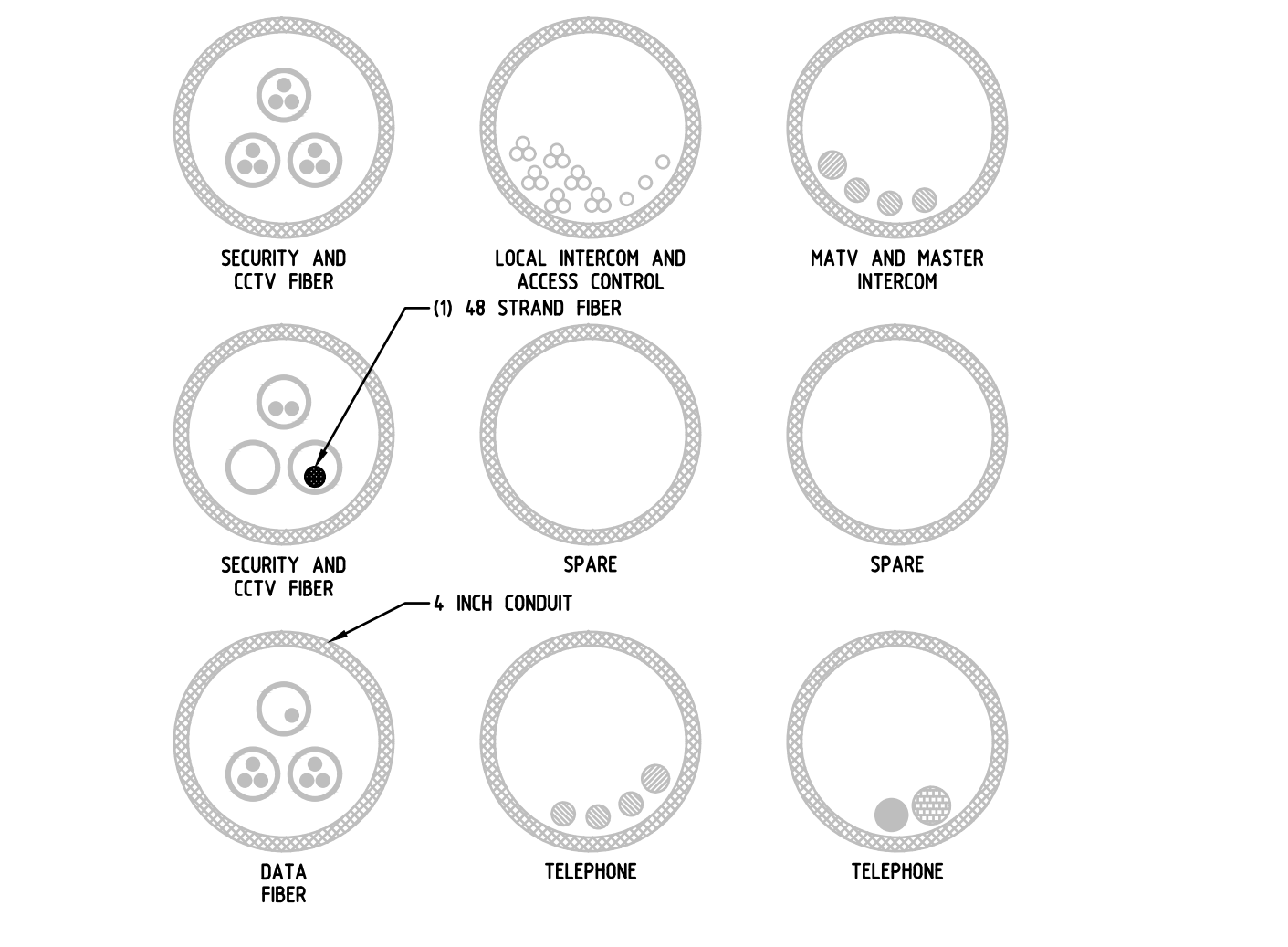




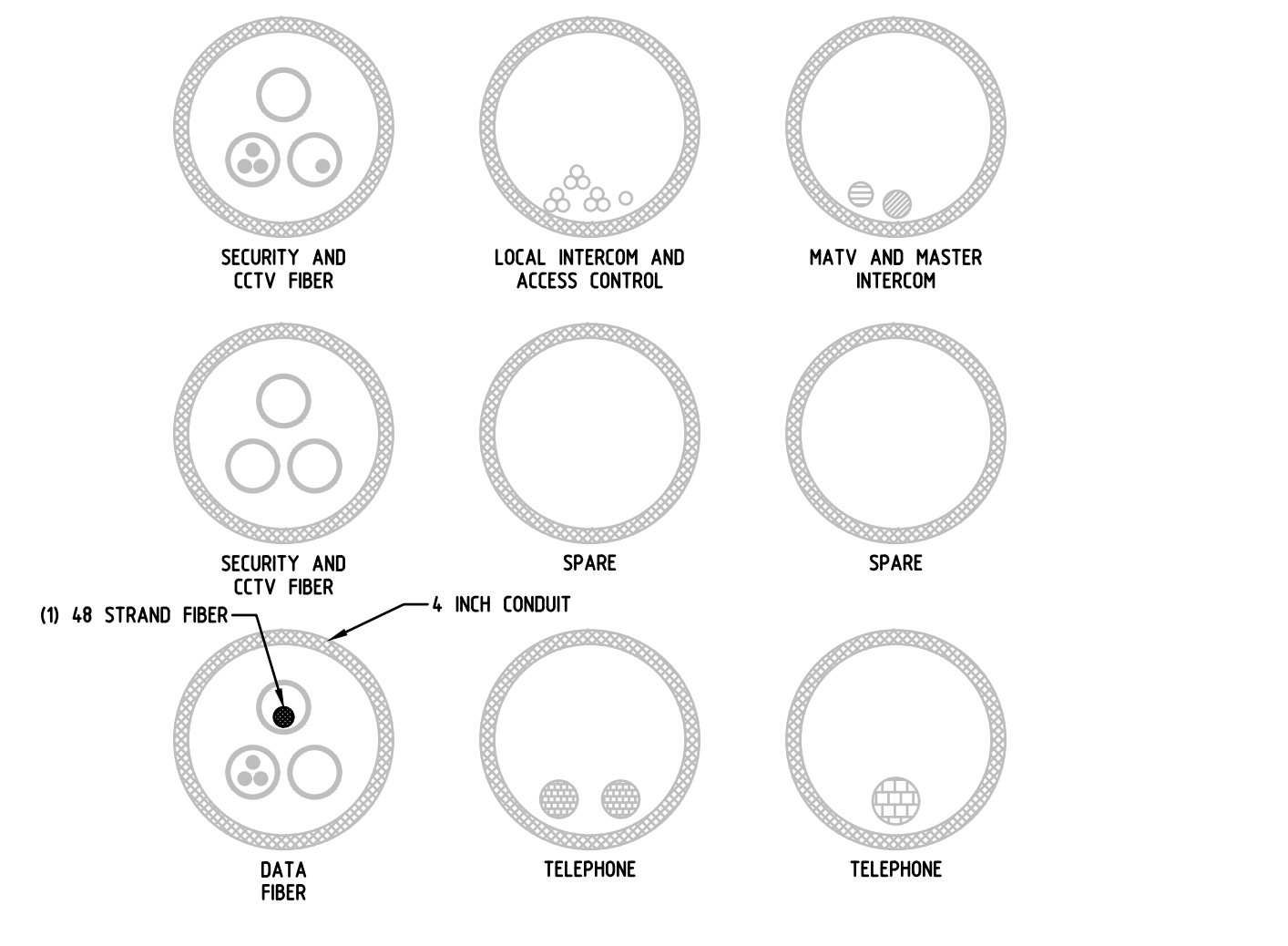
D11  
E2.00 DUCT BANK FROM ROOM H146 TO MH#1  
SCALE: NONE



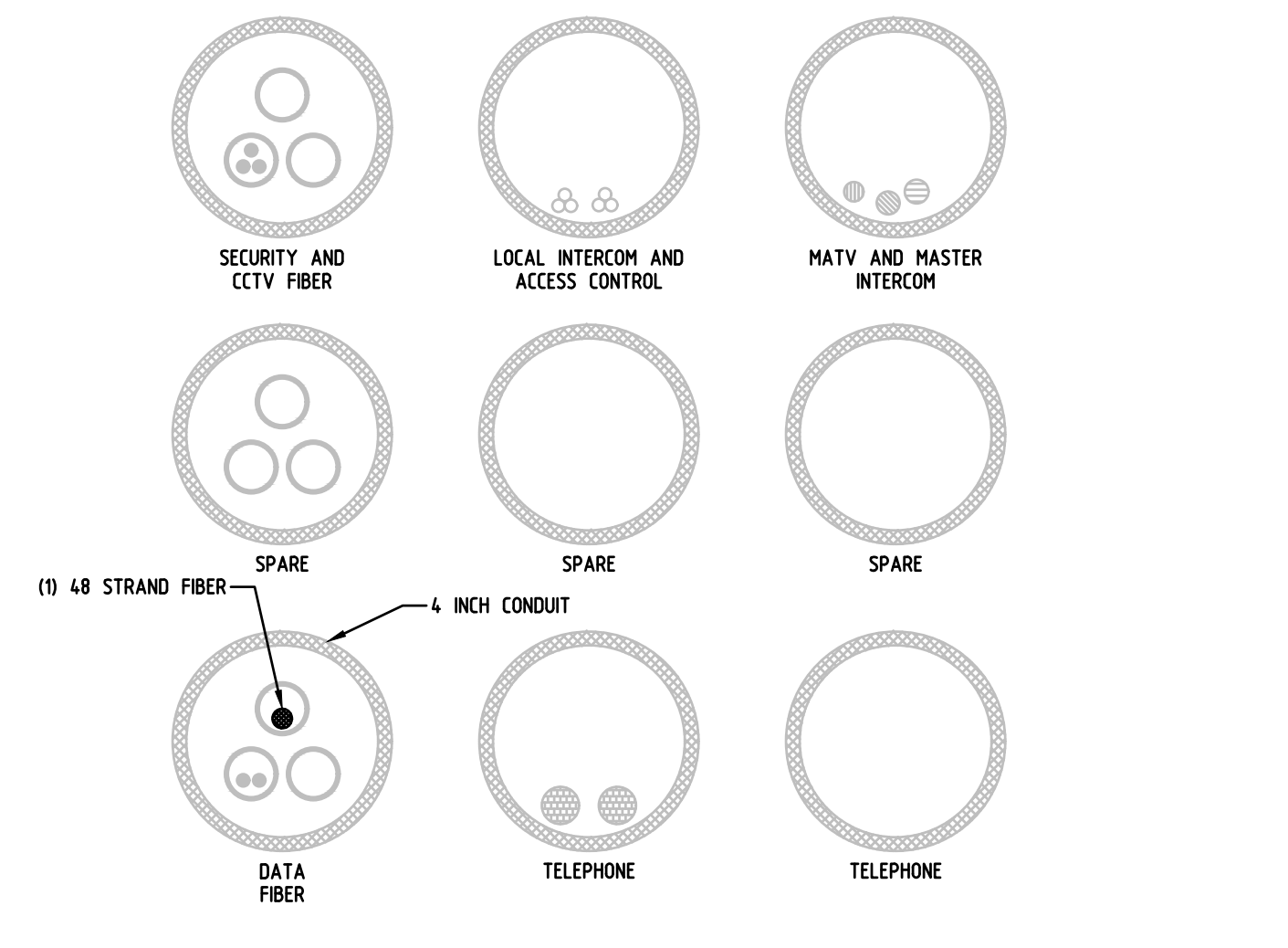
D12  
E2.00 DUCT BANK FROM ROOM H123 TO MH#1  
SCALE: NONE



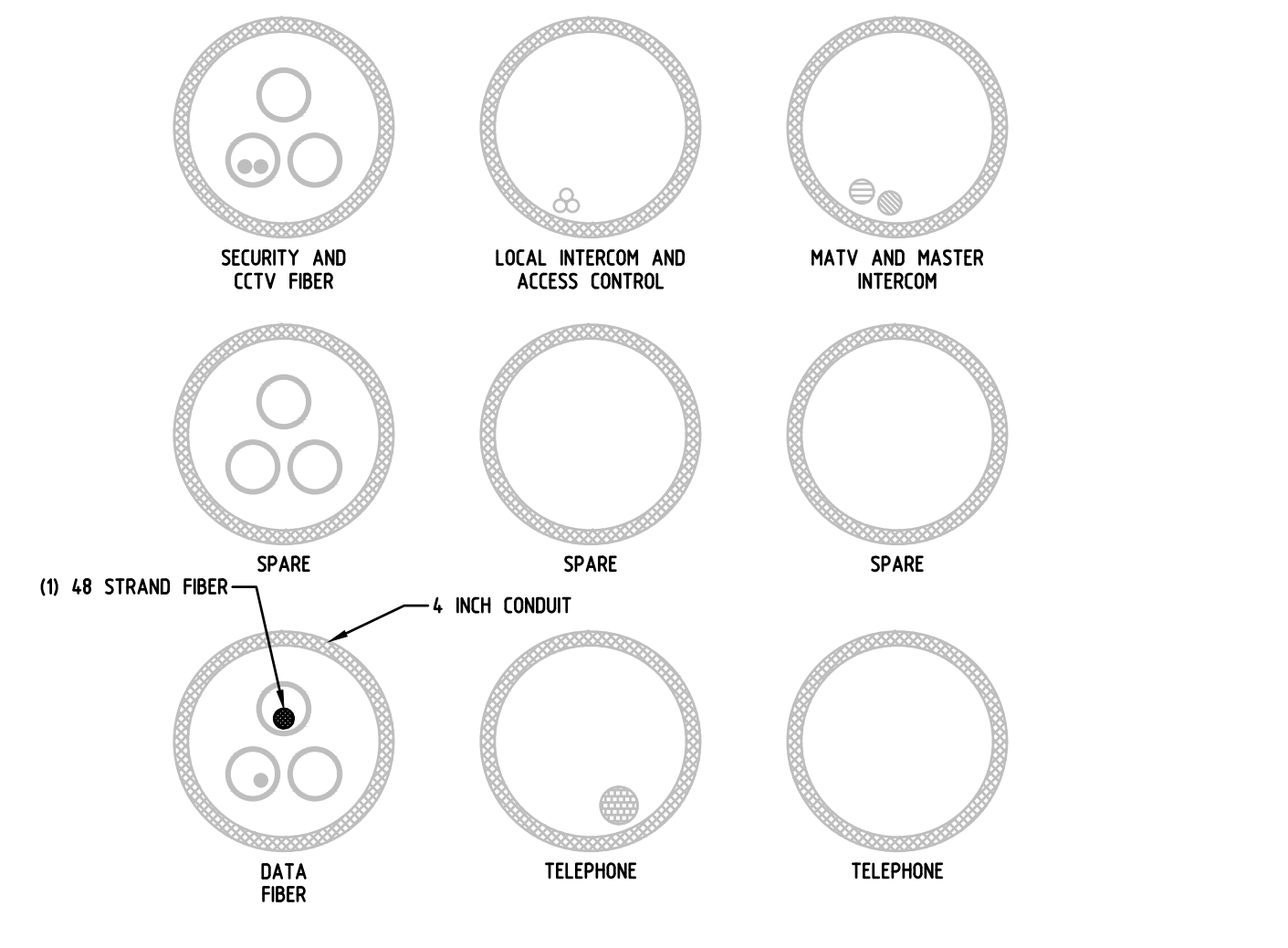
D13  
E2.00 DUCT BANK FROM ROOM MH#1 TO MH#8  
SCALE: NONE



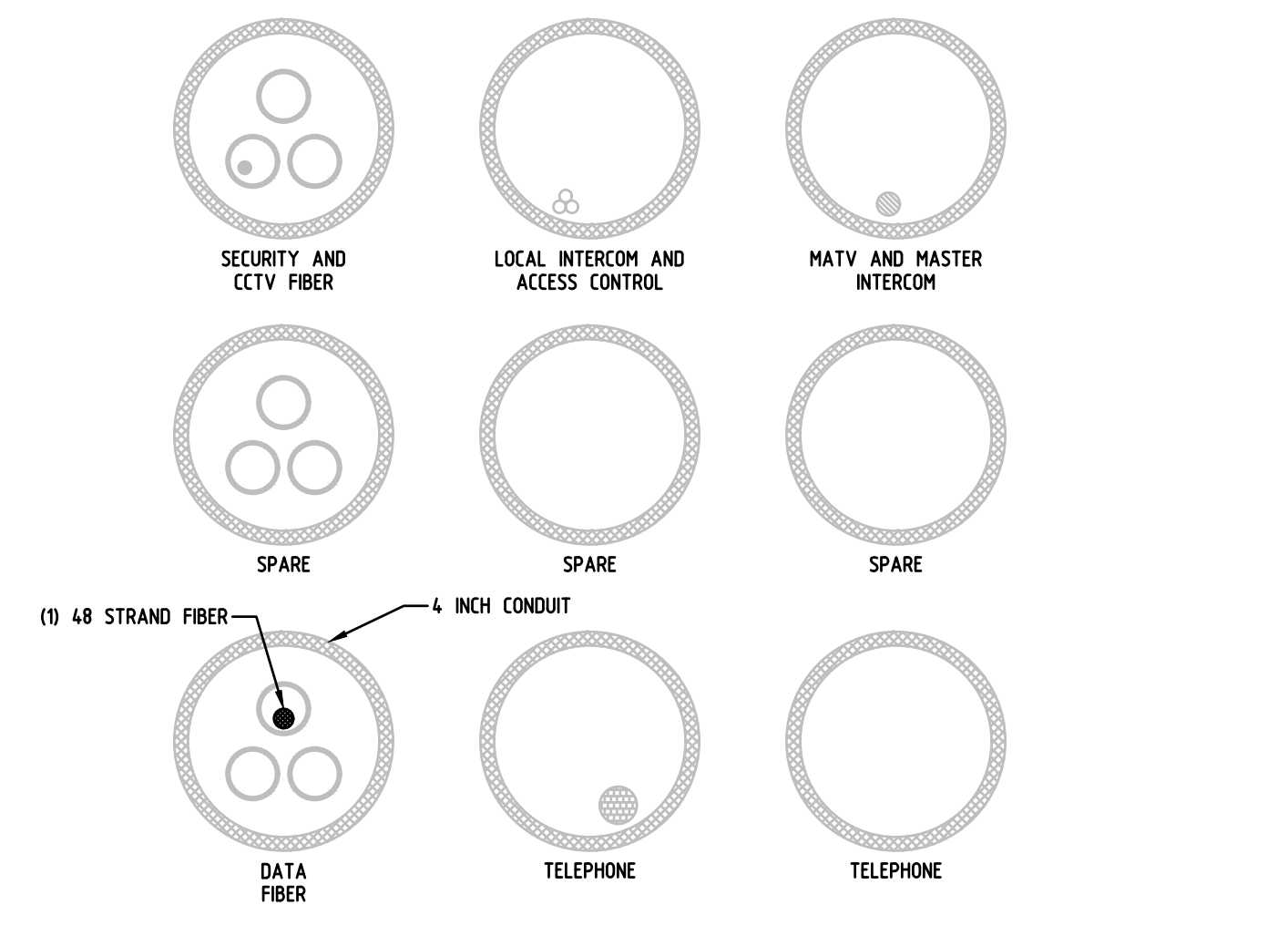
D14  
E2.00 DUCT BANK FROM ROOM MH#2 TO MH#1  
SCALE: NONE



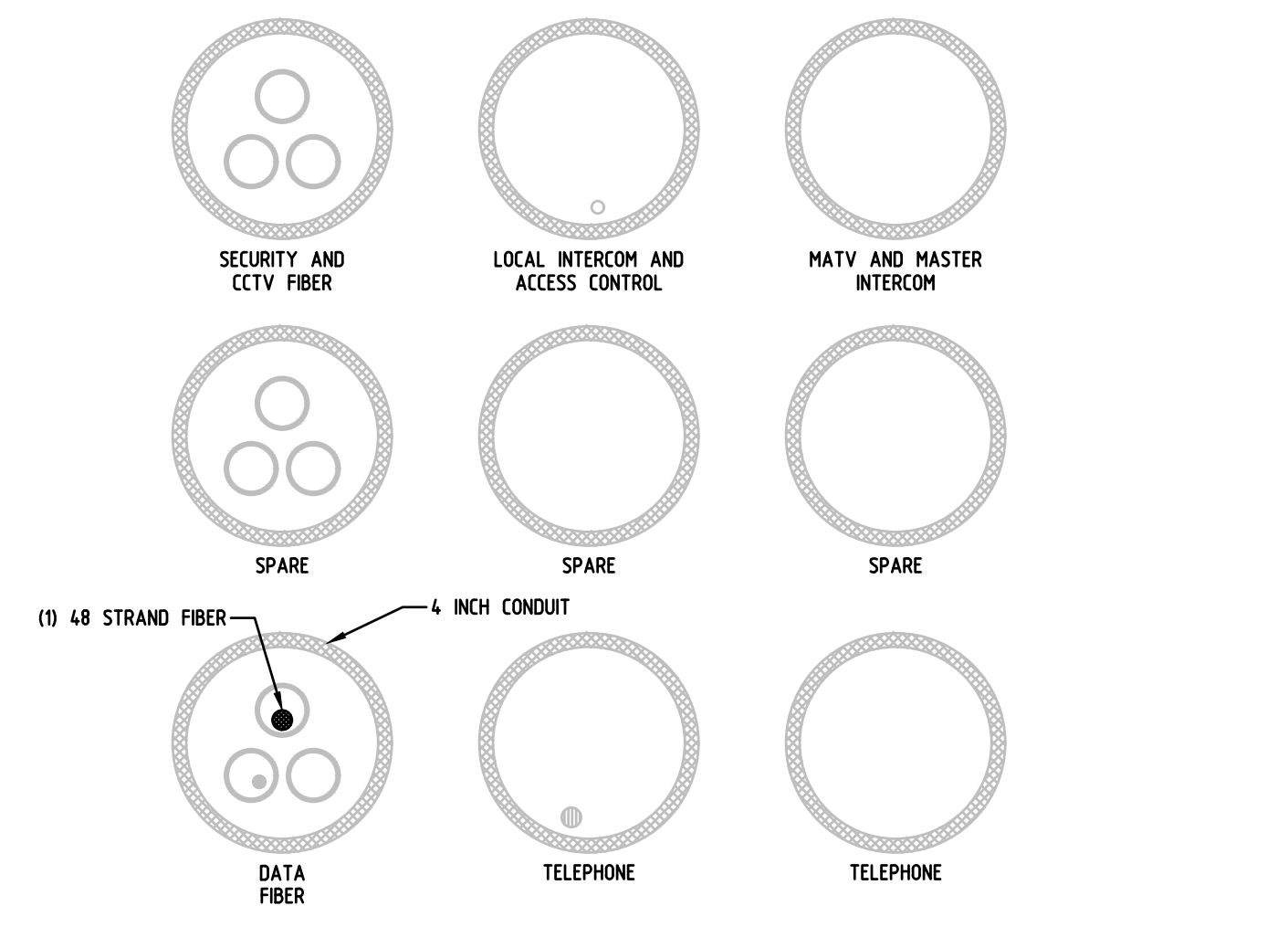
D15  
E2.00 DUCT BANK FROM ROOM MH#3 TO MH#2  
SCALE: NONE



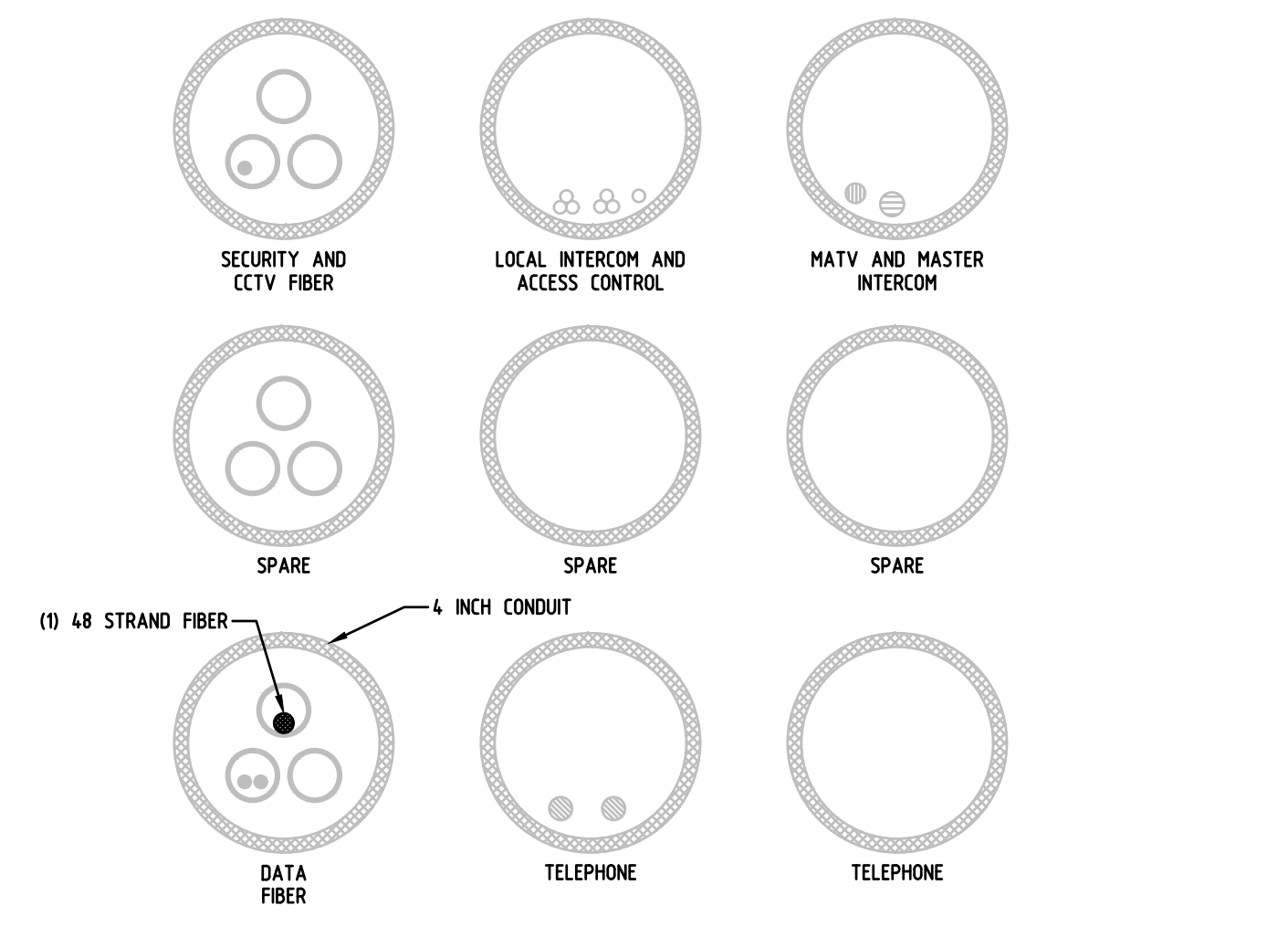
D16  
E2.00 DUCT BANK FROM ROOM MH#4 TO MH#3  
SCALE: NONE



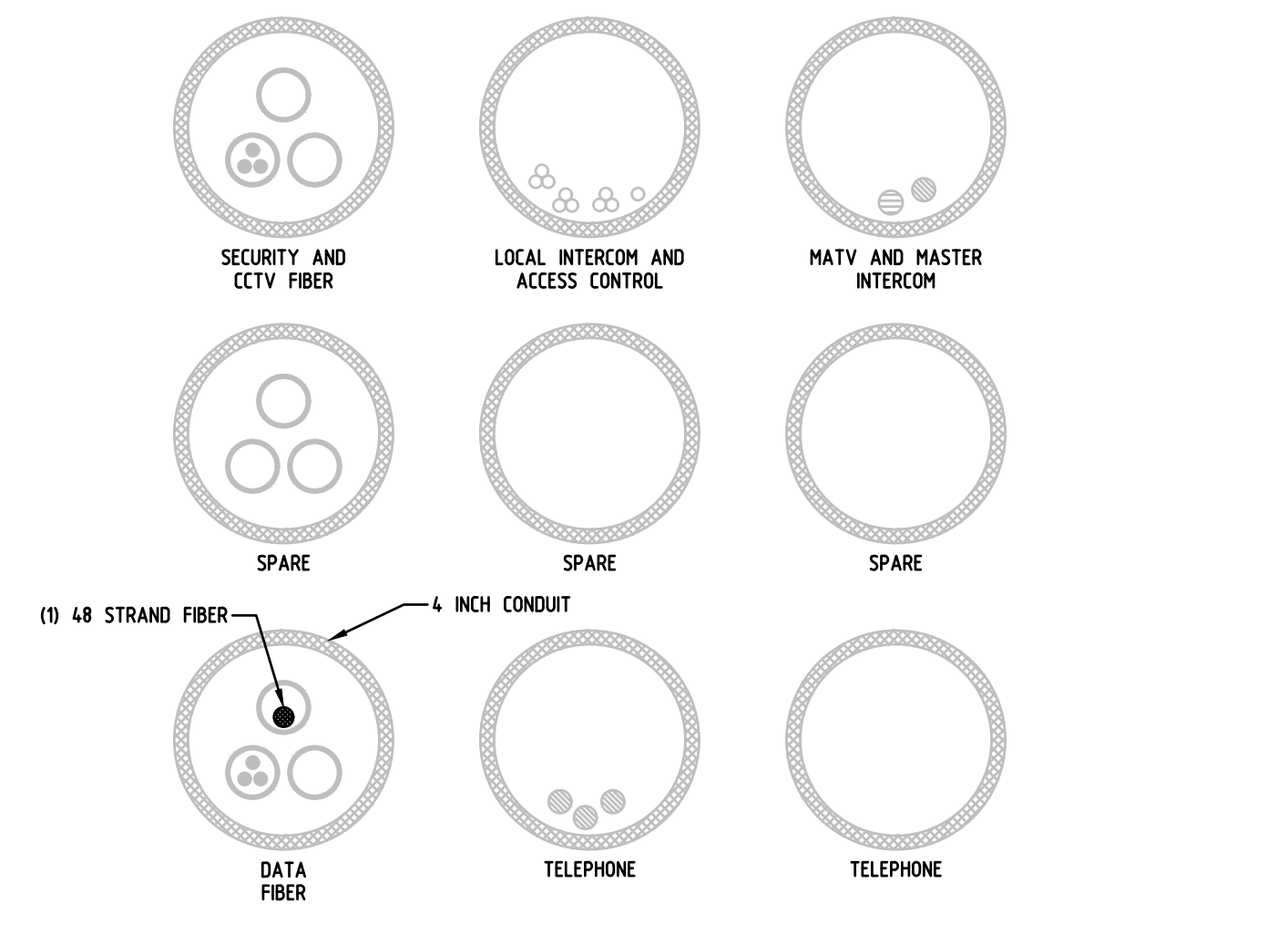
D17  
E2.00 DUCT BANK FROM ROOM MH#5 TO MH#4  
SCALE: NONE



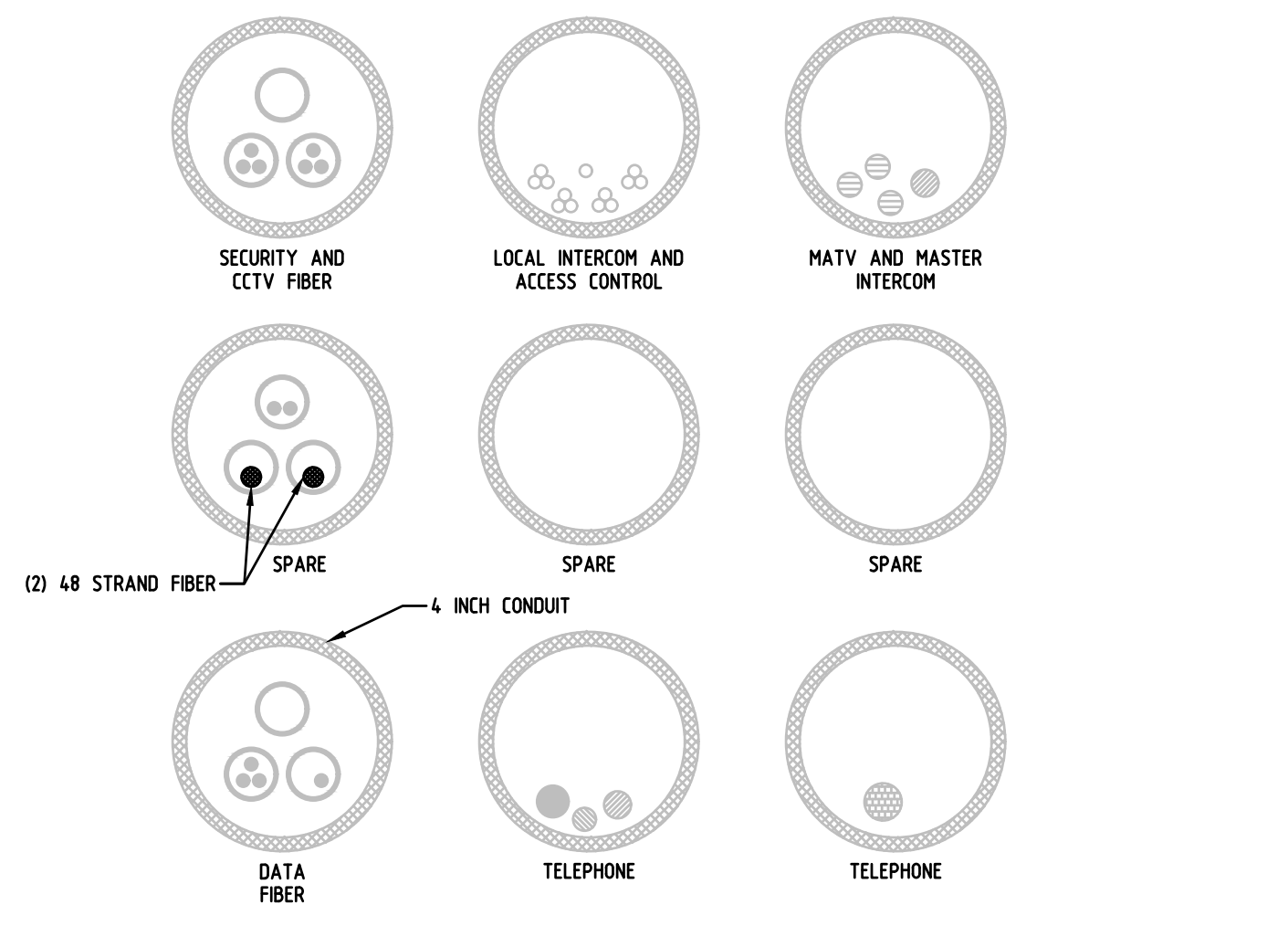
D18  
E2.00 DUCT BANK FROM ROOM MH#5 TO MH#6  
SCALE: NONE



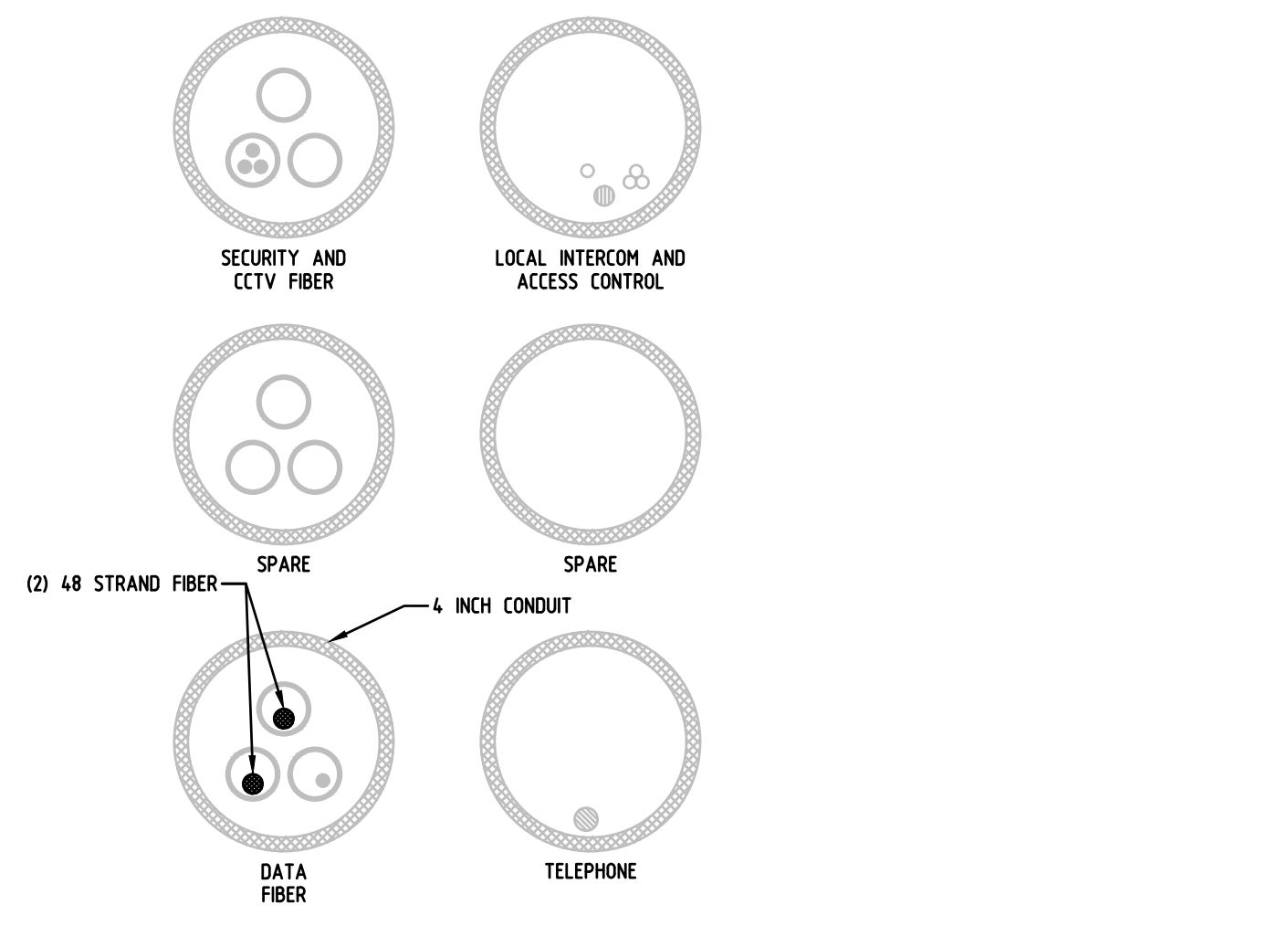
D19  
E2.00 DUCT BANK FROM ROOM MH#7 TO MH#6  
SCALE: NONE



D110  
E2.00 DUCT BANK FROM ROOM MH#7 TO MH#8  
SCALE: NONE



D111  
E2.00 DUCT BANK FROM ROOM MH#9 TO MH#8  
SCALE: NONE



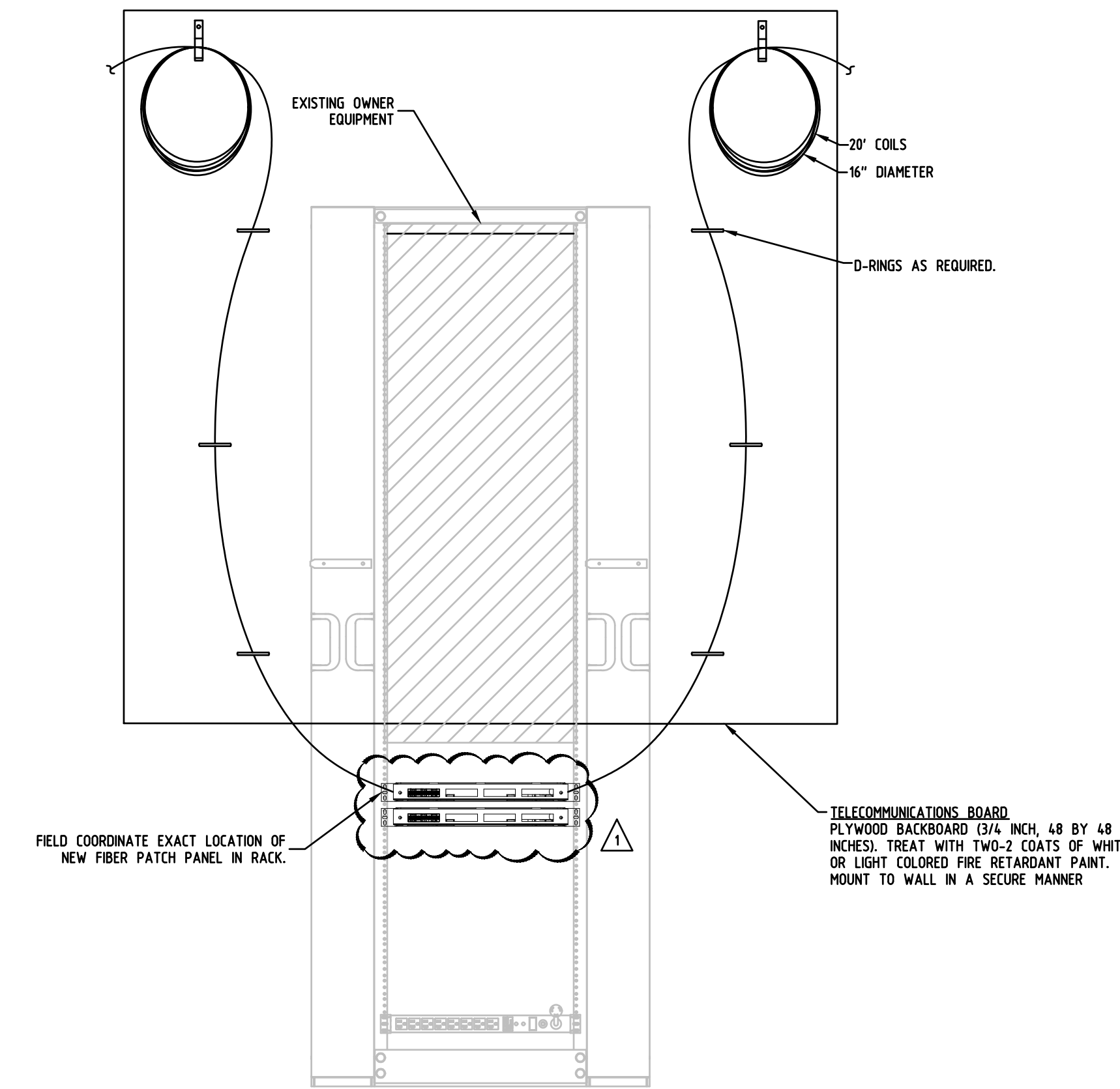
D112  
E2.00 DUCT BANK FROM ROOM MH#9 TO MH#10  
SCALE: NONE

### GENERAL NOTES

- SUPPLEMENTAL INFORMATION TAKEN FROM RECORD DRAWINGS AND TO BE FIELD VERIFIED.
- PROVIDE AS-BUILT DOCUMENTATION OF PATHWAY USED.
- FIELD VERIFY AND USE DESIGNATED PATHWAY FOR CABLING.
- NOTIFY OWNER AND ENGINEER IF FOUND UNUSABLE.
- PROVIDE ENGRAVED BRASS TAGS ON CABLES SECURED WITH STAINLESS STEEL BAND. ENGRAVED INFORMATION SHALL INDICATE BUILDING NOMENCLATURE AND ROOM NUMBER THE CABLE IS GOING TO. LETTERS SHALL BE 3/8" HIGH.

### LEGEND

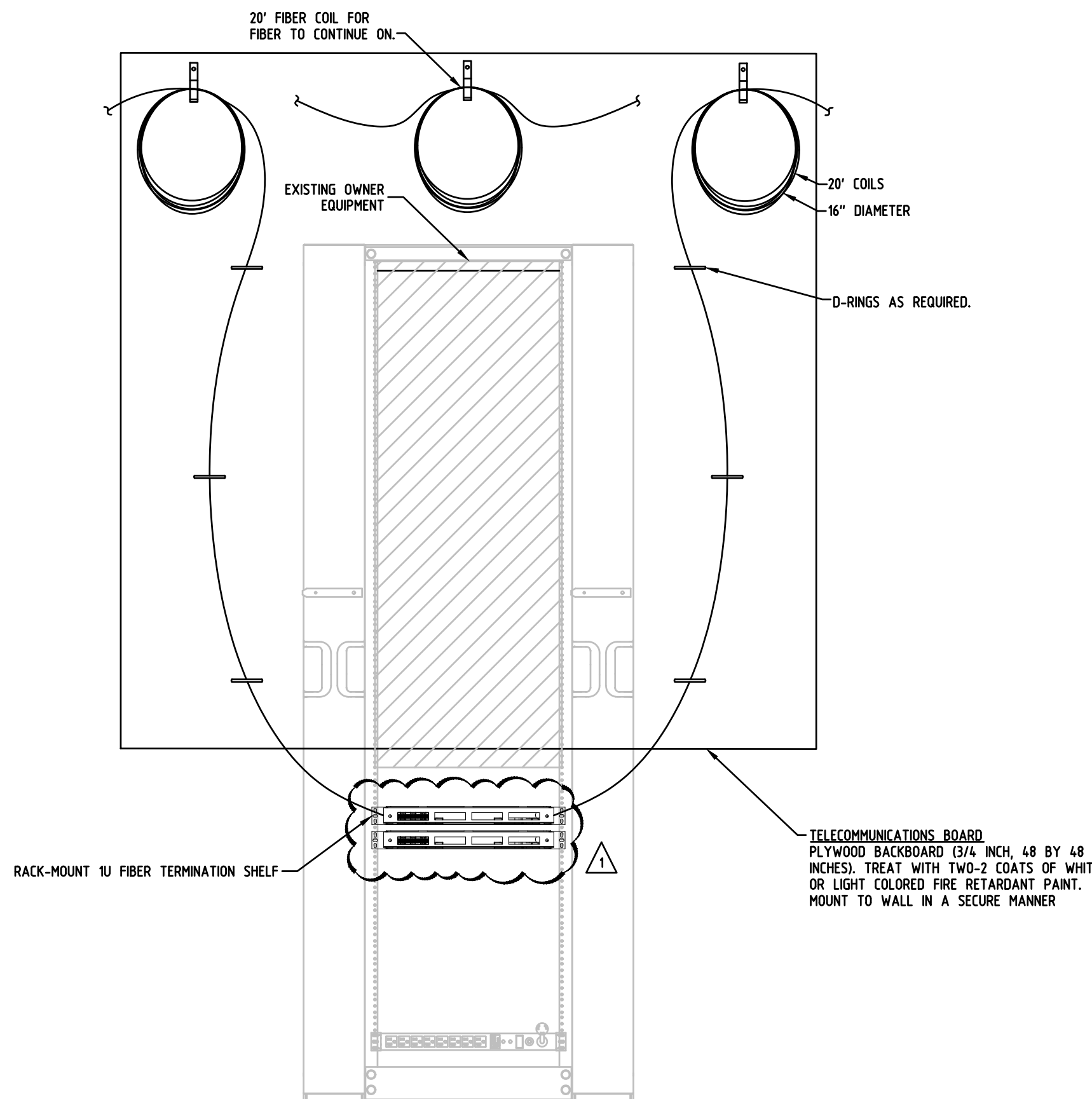
- ACCESS CONTROL
- LOCAL INTERCOM CABLES
- MATV CABLE
- 300 PAIR TELEPHONE
- 200 PAIR TELEPHONE
- 150 PAIR TELEPHONE
- 100 PAIR TELEPHONE
- 50 PAIR TELEPHONE
- 25 PAIR TELEPHONE
- FIBER OPTIC CABLE 4.5 AND 12 STRAND FIBER
- 1 - 1/4 INCH INNERDUCT
- 1 INCH INNERDUCT
- FIBER OPTIC SINGLE MODE 48 STRAND FIBER



### GENERAL DETAIL NOTES

- THIS DETAIL IS GENERIC IN NATURE & IS NOT INTENDED TO SHOW EVERY DETAIL. ADAPT TO ACTUAL SITE CONDITIONS.
- PROVIDE INSTALLATION/MOUNTING HARDWARE & SECURE PER MFR.
- PROVIDE INNERDUCTS TO PROTECT THE BACKBONE FIBER CABLES FROM POINT OF ENTRY INTO THE ROOM TO THE COILED LOOPS ON THE PLYWOOD.

D113  
E2.00 COMM ROOM FIBER BACKBONE EQUIPMENT ELEVATION DETAIL  
SCALE: NONE



### GENERAL DETAIL NOTES

- THIS DETAIL IS GENERIC IN NATURE & IS NOT INTENDED TO SHOW EVERY DETAIL. ADAPT TO ACTUAL SITE CONDITIONS.
- PROVIDE INSTALLATION/MOUNTING HARDWARE & SECURE PER MFR.
- PROVIDE INNERDUCTS TO PROTECT THE BACKBONE FIBER CABLES FROM POINT OF ENTRY INTO THE ROOM TO THE COILED LOOPS ON THE PLYWOOD.

D114  
E2.00 COMM ROOM FIBER BACKBONE EQUIPMENT ELEVATION WITH ADDITIONAL BACKBONE CABLE DETAIL  
SCALE: NONE



ADVANCED  
ENGINEERING  
SYSTEMS

4630 ANTELOPE CREEK RD  
SUITE 200  
LINCOLN, NE 68506  
P: (402) 488-0075  
F: (402) 488-0272  
www.a-e-sys.com

© ADVANCED ENGINEERING SYSTEMS

CERTIFICATE OF  
AUTHORIZATION #: CA1800

PROJECT #: 23152

TECUMSEH STATE CORRECTIONAL INSTITUTION  
FIBER CABLE REPLACEMENT  
2725 NE-50,  
TECUMSEH, NEBRASKA 68450

No.	Issued For	Date
1	ADDENDUM #1	04/05/2024

DATE: 03/12/2024



FIBER DETAILS

E2.00

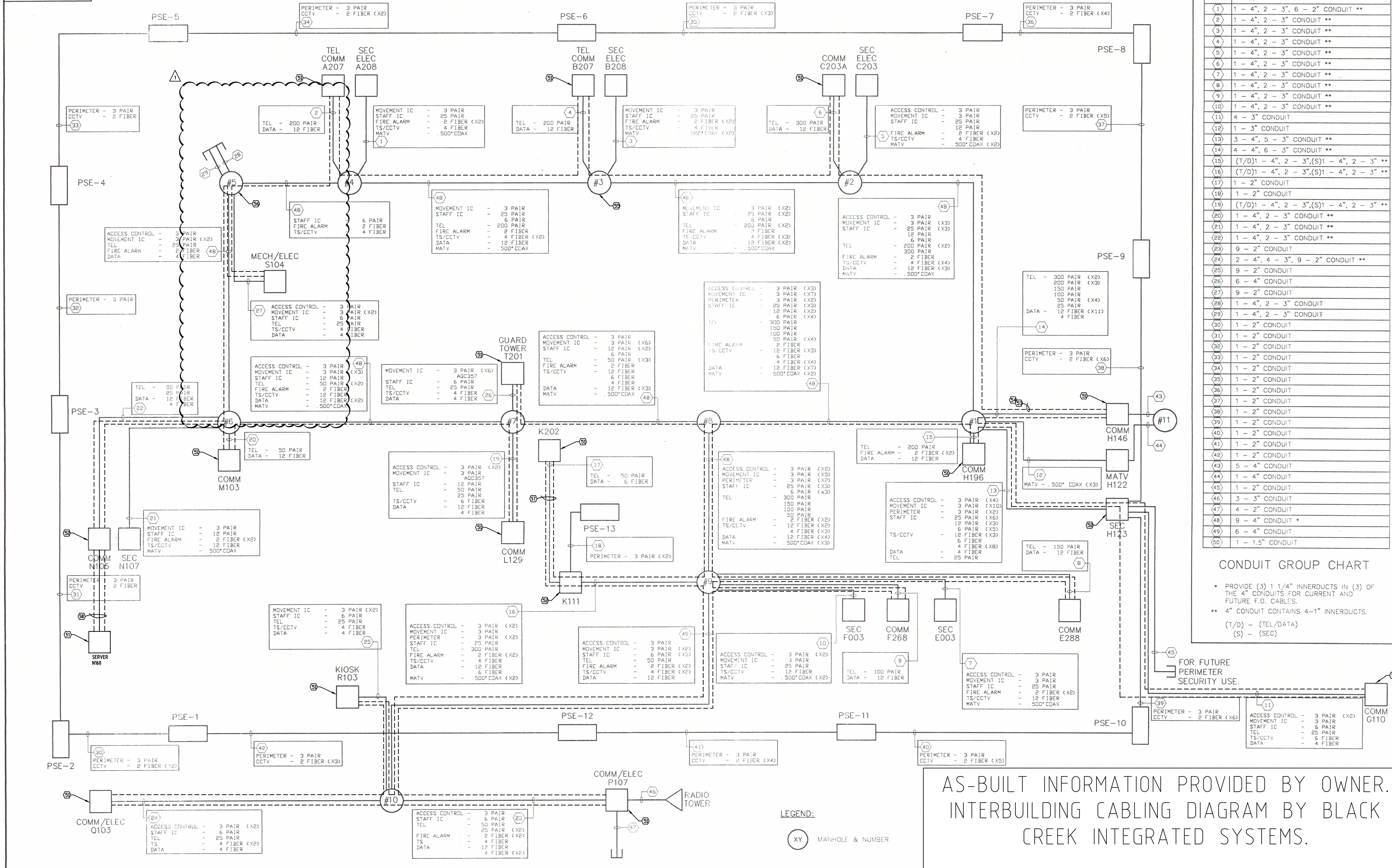


**KEY NOTES**

SYMBOL = ( )

51. SEE DETAIL D13, SHEET E200.
52. SEE DETAIL D14, SHEET E200.
53. TYPICAL PROVIDE PULL ROPE ALONG SIDE OF ALL NEW FIBER BACKBONE CABLEING.
54. NEW FIBER BACKBONE CABLEING SHALL BE IDENTIFIED IN MANHOLES AND AT COMM ROOMS WITH ORIGINATING POINT AND DESTINATION POINT. FIBER LOOP STARTS IN H146, AND CONTINUES TO C203A.
55. TYPICAL. EACH FIBER BACKBONE CABLE SHALL HAVE 20' SPARE LOOPS SECURED TO MANHOLE WALL.
56. PROVIDE 500' SPARE LOOP SECURED TO WALL OF MANHOLE FOR FUTURE.
57. PROVIDE (2) 2" CONDUIT FOR NEW FIBER CABLES BETWEEN COMM ROOMS K11 AND K202. ONE CONDUIT TO BE A SPARE.
58. PROVIDE (2) 2" CONDUIT FOR NEW FIBER CABLES BETWEEN COMM ROOM N108 AND SERVER N100.

99058033



TECUMSEH STATE CORRECTIONAL INSTITUTION  
FIBER CABLE REPLACEMENT  
2725 NE-50,  
TECUMSEH, NEBRASKA 68450

No.	Issued For	Date
1	ADDENDUM #1	04/05/2024

DATE: 03/12/2024



FIBER ONE-LINE  
DIAGRAM & DETAILS

**E2.01**