



Innovative Design in Architecture

BIDDERS BULLETIN

PROJECT: Holyoke Community
Childcare Initiative
Holyoke, Colorado

BULLETIN NUMBER

BB-1

ISSUED BY:

Brian Jensen

PROJECT #: 21-1139

DATE ISSUED: February 22nd, 2024

This bulletin is issued by the Architect to all known bidders before receipt of proposals, for the purpose of explaining, interpreting, or modifying the original plans and specifications. When enumerated by the bidder upon the proposal sheet, the information or instructions given hereon will be equally binding upon all parties as if included in the original plans and specifications.

BIDDER MUST ENTER THE NUMBER OF THIS BULLETIN ON HIS PROPOSAL SHEET

GENERAL INFORMATION

BB-1, ITEM #1; General

*It has been determined that some old drawings may have been distributed. Please review the drawings you have and confirm they have the actual civil sheets and not a schematic site plan. The correct plans should be 58 pages. If you have a set of drawings with a schematic site plan only and not multiple civil sheets and your plans have the words below the project name on the cover sheet that state: Building Pricing Project, Excluding Civil Work, then you need to reach out to A&D and advise them you have the incorrect drawing set and to have them issue you the correct drawings.

THE FOLLOWING ITEMS ARE APPLICABLE TO THE SPECIFICATIONS

BB-1, ITEM #2; Substitutions

The following products and manufacturers will be considered approved equal for the products in which they are listed below. However, this does not relieve the supplier from providing equipment as specified, and if equipment is submitted which does not meet the intent of the specifications, it will in fact be rejected.

*None at this time

END OF BB-1

See attached for MEP addendum items

Holyoke Community Childcare Initiative
Bidder's Bulletin #1
February 22nd, 2024

Bidder Bulletin 01



Date: 2-22-2024

Project Name: Holyoke Childcare Center

Project #: 19146

Mechanical Drawing Items:

1. The following sheet(s) shall be modified:

A. PP-201 - Main Level Plumbing Plan:

1. Sheet note added to Water 134 regarding deduct alternate to omit combination wet-pipe and dry-pipe fire protection system.

Electrical Drawing Items:

1. The following sheet(s) shall be modified:

A. EP-201 - Main Level Power and Low Voltage Plan:

1. Sheet note added regarding deduct alternate to omit power and devices associated with fire protection system.
2. Add smoke detectors as indicated in clouded areas, associated with deduct alternate.

Submitted By: Patrick Diederich, Rachel Cochran

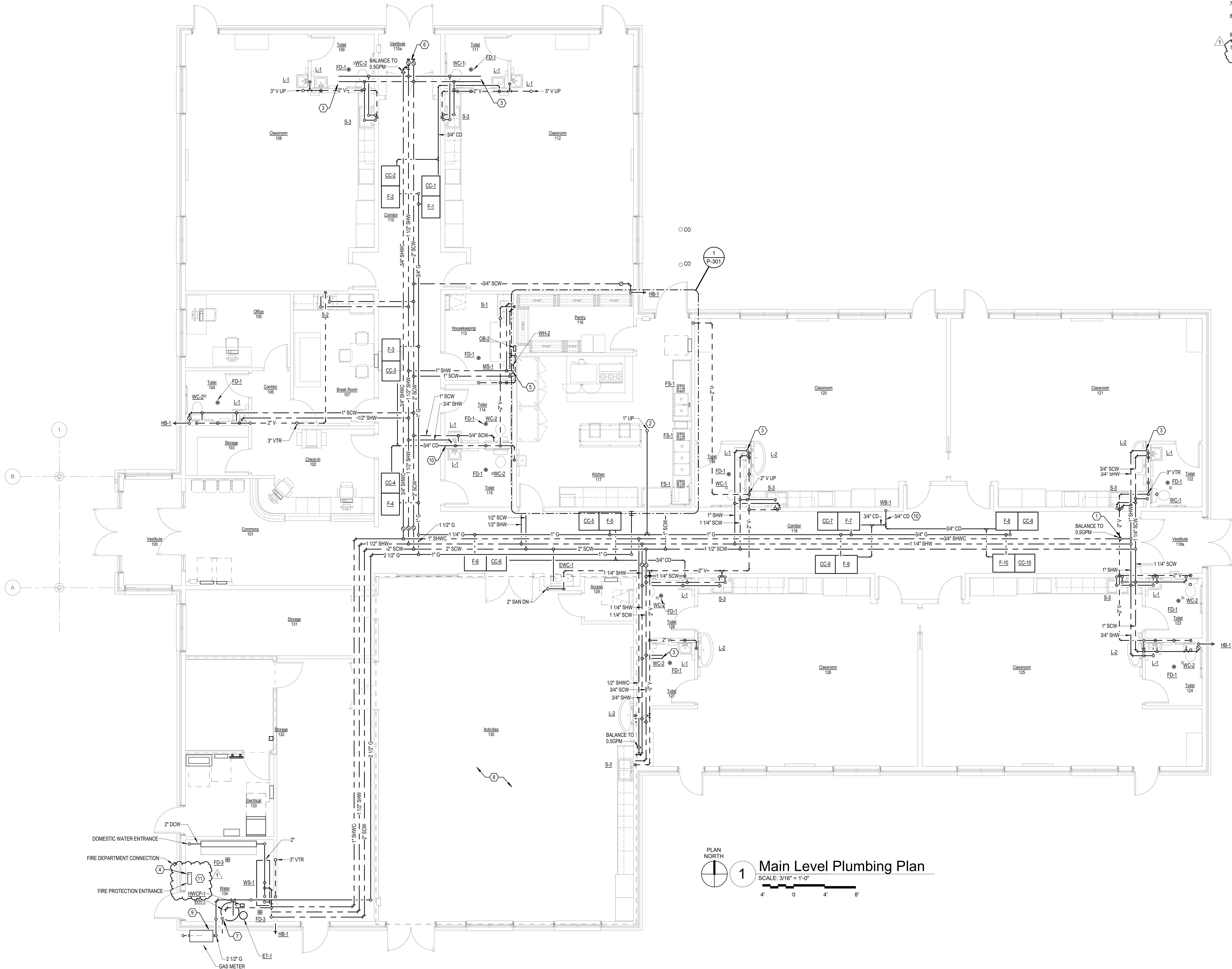
jdr

GENERAL NOTES:

1. COVER SHEET GENERAL NOTES APPLY TO ALL SHEETS.
2. UNLESS NOTED OTHERWISE, DETAILS SHOWN WITHIN THESE DOCUMENTS ARE APPLICABLE FOR ALL PIPING, EQUIPMENT AND DUCTWORK INSTALLATIONS WHETHER OR NOT SPECIFICALLY NOTED.
3. THE OWNER AND ENGINEER ARE NOT RESPONSIBLE FOR THE CONTRACTOR'S SAFETY PRECAUTIONS OR FOR THE MEANS, METHODS, TECHNIQUES, CONSTRUCTION SEQUENCES, OR PROCEDURES REQUIRED TO PERFORM THIS WORK.

SHEET NOTES:

1. DOMESTIC HOT WATER CIRCULATION CONNECTION, TYP.
2. 1" GAS UP TO SERVE MAKEUP AIR UNIT. COORDINATE FINAL GAS PIPE ROUTING WITH CONNECTION POINT TO UNIT.
3. ROUTE 3/4" SCW, 3/4" SHW TO (2) LAVA.
4. PROVIDE COMBINATION WET PIPE AND DRY-PIPE FIRE PROTECTION SYSTEM ENTRANCE.
5. PROVIDE 1" SHW TO WH-2 FROM BUILDING DOMESTIC WATER PIPING. MOUNT WH-2 AT 60" AFF OVER MOP SINK.
6. 2" SCW, 1-1/2" SHW CAP FOR FUTURE.
7. PROVIDE 3" CONCENTRIC VENT KIT FOR WATER HEATER INTAKE AND EXHAUST AIR. TERMINATE THROUGH SOUTH EXTERIOR WALL.
8. PROVIDE DRY-TYPE FIRE PROTECTION SYSTEM FOR ACTIVITY ROOM. DRY-TYPE PIPING SHALL BE ROUTED IN THE ATTIC SPACE ABOVE. PROVIDE CONCEALED HEADS IN VAULTED ACTIVITY ROOM CEILING. ROOM IS 1,400 SQ. FT.
9. REFER TO NATURAL GAS RISER DIAGRAM ON SHEET MS01 FOR NATURAL GAS DEMAND.
10. PROVIDE CONCEALED CAP FIRE PROTECTION WATER ENTRANCE WITHIN SPACE. DO NOT PROVIDE COMBINATION WET PIPE AND DRY-PIPE FIRE PROTECTION SYSTEM.
11. ~~REJECT ALTERNATE~~ CAP FIRE PROTECTION WATER ENTRANCE WITHIN SPACE. DO NOT PROVIDE COMBINATION WET PIPE AND DRY-PIPE FIRE PROTECTION SYSTEM.



PLAN NORTH
1
Main Level Plumbing Plan
SCALE: 3/16" = 1'-0"
4' 0 4' 8'

SPRINKLER NOTE:
THE BUILDING SHALL HAVE A FULLY COMPLIANT FIRE PROTECTION SYSTEM. THE SYSTEM SHALL COMPLY TO ALL APPLICABLE NFPA CODES, STATE AND LOCAL FIRE MARSHAL'S REGULATIONS, AND THE OWNERS INSURANCE COMPANY AGENCY. THE SPRINKLER CONTRACTOR SHALL PREPARE DOCUMENTS SHOWING ALL PIPES, SIZES, HEAD TYPES, AND LOCATIONS. LAYOUT SHALL BE FULLY COORDINATED WITH ALL OTHER TRADES. DRAWINGS SHALL BE SUBMITTED TO ENGINEER/ARCHITECT FOR REVIEW AND THEN SUBMITTED TO LOCAL AHJ AND OWNERS INSURANCE AGENCY. CHANGES REQUIRED BY AHJ OR OWNERS INSURANCE AGENCY SHALL BE RESUBMITTED TO ENGINEER/ARCHITECT. THE GENERAL CONTRACTOR SHALL BE RESPONSIBLE FOR REVIEW AND COORDINATION OF ALL SPRINKLER ROUTING AND HEAD LOCATIONS. CONFLICTS WITH SPRINKLER PIPE AND ANY OTHER MECHANICAL OR ELECTRICAL SYSTEM SHALL BE RESOLVED THROUGH REROUTING OR RELOCATING SYSTEM COMPONENTS AT NO ADDITIONAL PROJECT COST.

2023 © COPYRIGHT
PERMISSION TO REPRODUCE ANY PART OF THIS DOCUMENT IS HEREBY GRANTED SOLELY FOR THE PURPOSE OF THE CONSTRUCTION OF THE PROJECT OR THE ARCHIVING OF THIS PROJECT. UNAUTHORIZED USE OF THIS DOCUMENT WITHOUT THE WRITTEN PERMISSION OF SPECIALIZED ENGINEERING SOLUTIONS IS PROHIBITED BY COPYRIGHT LAW.
DO NOT SCALE DRAWING. ALL DIMENSIONS AND CLEARANCES SHALL BE VERIFIED FROM APPROPRIATE SOURCES. ALL WORK SHALL BE COORDINATED PRIOR TO INSTALLATION. SEE SPECIFICATIONS.

SPECIALIZED ENGINEERING SOLUTIONS
10300 Ellison Circle
Omaha, NE 68134
Phone: 402.991.5520
www.specializedeng.com
SES PROJECT # 19146

NO. DATE REVISIONS
1 12/22/23 BBA1



ARCHITECT
319 East Francis, Suite 101
NORTH PLATTE, NE 69101
308.532.0412

STRUCTURAL ENGINEER
Sara Smith
1221 N Street, Suite 600
LINCOLN, NE 68508
402.476.9700

MECHANICAL ENGINEER
Specialized Engineering Solutions
10300 Ellison Circle
Omaha, NE 68134
Phone: 402.991.5520

ELECTRICAL ENGINEER
Specialized Engineering Solutions
10300 Ellison Circle
Omaha, NE 68134
Phone: 402.991.5520

CIVIL ENGINEER

INTERIOR DESIGN



CG ID
319 East Francis,
Suite 101
North Platte, NE
69101

PHONE: 308.532.0412
FAX: 308.532.1302



Main Level Plumbing Plan

PROJECT NUMBER:
21-1139
DRAWN BY:
PHD
CHECKED BY:
JKK
DATE:
12/12/2023

SHEET NUMBER:
PP-201
▲

LOW VOLTAGE GENERAL NOTES:

(LOW VOLTAGE GENERAL NOTES SHALL APPLY TO ALL SHEETS)

- COORDINATE THE LOCATIONS AND CONTROLS OF ALL FIRE/SMOKE DAMPERS WITH MECHANICAL CONTRACTOR PRIOR TO WORK.
- SITE IS TO BE DETERMINED. COORDINATE THE FOLLOWING WITH OWNER AND LOCAL SERVICE PROVIDERS.
 - COORDINATE PATH AND REQUIREMENTS FOR CONDUITS INTO ELECTRICAL ROOM.

POWER GENERAL NOTES:

(POWER GENERAL NOTES SHALL APPLY TO ALL SHEETS)

- ELECTRICAL DEVICE MOUNTING HEIGHTS ARE NOT INDICATED ON ELECTRICAL FLOOR PLANS. CONTRACTOR SHALL COORDINATE EXACT DEVICE LOCATIONS AND MOUNTING HEIGHTS WITH ARCHITECTURAL INTERIOR ELEVATIONS. WHERE DEVICE MOUNTING HEIGHTS ARE NOT INDICATED PER ARCHITECT, MOUNT DEVICES AT HEIGHT INDICATED IN ELECTRICAL PROJECT SPECIFICATIONS.
- CONTRACTOR SHALL COORDINATE ALL ELECTRICAL DEVICE ROUGH-IN LOCATIONS AND ELEVATIONS WITH ARCHITECTURAL DRAWINGS TO ASSURE COMPATIBILITY WITH FINISHES SPECIFIED ON THE ARCHITECTURAL DRAWINGS. ROUTE ALL ELECTRICAL BRANCH CIRCUITS AND CONDUITS SPECIFIED TO COORDINATE WITH OTHER TRADES AND TO ALLOW FOR SERVICE AND MAINTENANCE AND TO MINIMIZE THE USE OF ACCESS PANELS. WHERE ACCESS PANELS CANNOT BE AVOIDED, ARRANGE WORK TO INSTALL PANELS IN LOCATIONS ACCEPTABLE TO ARCHITECT.
- REFER TO DETAILS, SCHEDULES, AND SYMBOL LEGENDS FOR ADDITIONAL REQUIREMENTS.
- GFCI TYPE RECEPTACLES ARE NOTED AS SUCH ON THE PLANS FOR PRICING PURPOSES. HOWEVER, CONTRACTOR SHALL BE RESPONSIBLE TO ENSURE ALL RECEPTACLES INSTALLED WHERE A 6' CORD LENGTH COULD REACH THE EDGE OF A SINK HAVE GFCI PROTECTION.
- RECEPTACLES MOUNTED ALONG COUNTER IN CLASSROOMS SHALL BE MOUNTED ABOVE COUNTER.
- RECEPTACLES MOUNTED ALONG WORKSTATIONS IN KITCHEN SHALL BE MOUNTED ABOVE WORKSTATION.
- ALL RECEPTACLES SHALL BE TAMPER RESISTANT.
- SITE IS TO BE DETERMINED. COORDINATE THE FOLLOWING WITH OWNER AND LOCAL UTILITY.
 - PROVIDE PAD FOR UTILITY TRANSFORMER. COORDINATE PAD REQUIREMENTS WITH LOCAL UTILITY. COORDINATE LOCATION WITH OWNER.
 - COORDINATE PATH OF SERVICE ENTRANCE FEEDERS WITH UTILITY TRANSFORMER LOCATION.
 - COORDINATE PATH AND REQUIREMENTS FOR TRENCH AND CONDUIT FOR PRIMARY CONDUCTORS TO UTILITY TRANSFORMER. PRIMARY CONDUCTORS BY UTILITY.

SHEET NOTES:

- PROVIDE JUNCTION BOX AND CONDUIT FOR REMOTE PULL STATION PER KITCHEN EQUIPMENT DRAWINGS. COORDINATE EXACT LOCATION OF PULL STATIONS WITH ARCHITECT PRIOR TO ROUGH-IN.
- PROVIDE 4-1/16" SQUARE BY 2-1/8" DEEP FLUSH MOUNTED BOX WITH SINGLE GANG PLASTER RING AND COVER AND 1-1/4" CONDUIT TO ABOVE LAY-IN CEILING FOR ANY CABLES.
- COORDINATE EXACT LOCATION AND MOUNTING HEIGHT OF CAMERA WITH OWNER PRIOR TO INSTALLATION.
- PROVIDE 1/2" CONDUITS STUBBED FROM ELECTRICAL ROOM TO ABOVE ACCESSIBLE CEILING SPACE. PROVIDE CONDUIT BUSHINGS ON BOTH ENDS OF CONDUIT.
- PROVIDE PLYWOOD BACKBOARD PER SPECIFICATION.
- PROVIDE FIRE ALARM CONNECTION TO KITCHEN HOOD. PROVIDE ALL NECESSARY COMPONENTS FOR A COMPLETE INSTALLATION OF A KITCHEN HOOD.
- COORDINATE HEIGHT AND LOCATION OF RECEPTACLE WITH EWC SHOP DRAWINGS.
- PROVIDE (1) SPARE 1" UNDERGROUND CONDUITS FROM ELECTRICAL ROOM FOR FUTURE SITE LIGHTING. TERMINATE IN HANDHOLE.
- PROVIDE ONE (1) SPARE 1" CONDUIT FROM PANEL 1M1.1 TO JUNCTION BOX ABOVE ACCESSIBLE CEILING FOR FUTURE WALL MOUNTED PLAYGROUND LIGHTING.
- PROVIDE ONE (1) SPARE 1" CONDUIT FROM PANEL 1M1.2 TO JUNCTION BOX ABOVE ACCESSIBLE CEILING FOR FUTURE WALL MOUNTED PLAYGROUND LIGHTING.
- PROVIDE CONNECTION TO AIR COMPRESSOR FOR DRY PIPE SYSTEM. COORDINATE EXACT REQUIREMENTS WITH SHOP DRAWINGS.
- PROVIDE REMOTE GFCI DEVICE FOR RANGE RECEPTACLE. MATCH MOUNTING HEIGHT OF ABOVE-COUNTER RECEPTACLES.
- CONTRACTOR PERFORMING PV SYSTEM INSTALLATION SHALL PROVIDE FEEDER AND TIE IN TO PANEL.
- CONTRACTOR PERFORMING PV SYSTEM INSTALLATION SHALL TIE IN TO MDP.
- PROVIDE SIGNAGE FOR DOOR THAT STATES "BATTERY STORAGE SYSTEM"
- PROVIDE SIGNAGE ADJACENT TO MDP DISCONNECT THAT STATES "BATTERY DISCONNECT IN BATTERY STORAGE SYSTEM ROOM"
- PROVIDE SIGNAGE ON PANEL 1M1.2 THAT STATES "WARNING: EQUIPMENT HAS MORE THAN ONE POWER SOURCE. REFER TO PV SYSTEM ONE LINE FOR POWER CONDUIT DEVICES"
- DEDUCT ALTERNATE DO NOT PROVIDE POWER OR FIRE ALARM DEVICES ASSOCIATED WITH FIRE PROTECTION SYSTEM.
- DEDUCT ALTERNATE PROVIDE SMOKE DETECTOR.

INSTALL GREEN INSULATED GROUND WIRE WITH LIGHTING, RECEPTACLE AND EQUIPMENT BRANCH CIRCUITS.

INSTALL INDIVIDUAL (DEDICATED) NEUTRAL CONDUCTORS FOR EACH 120V OR 277V PHASE CONDUCTOR SERVED FROM A SINGLE POLE CIRCUIT BREAKER

2023 © COPYRIGHT

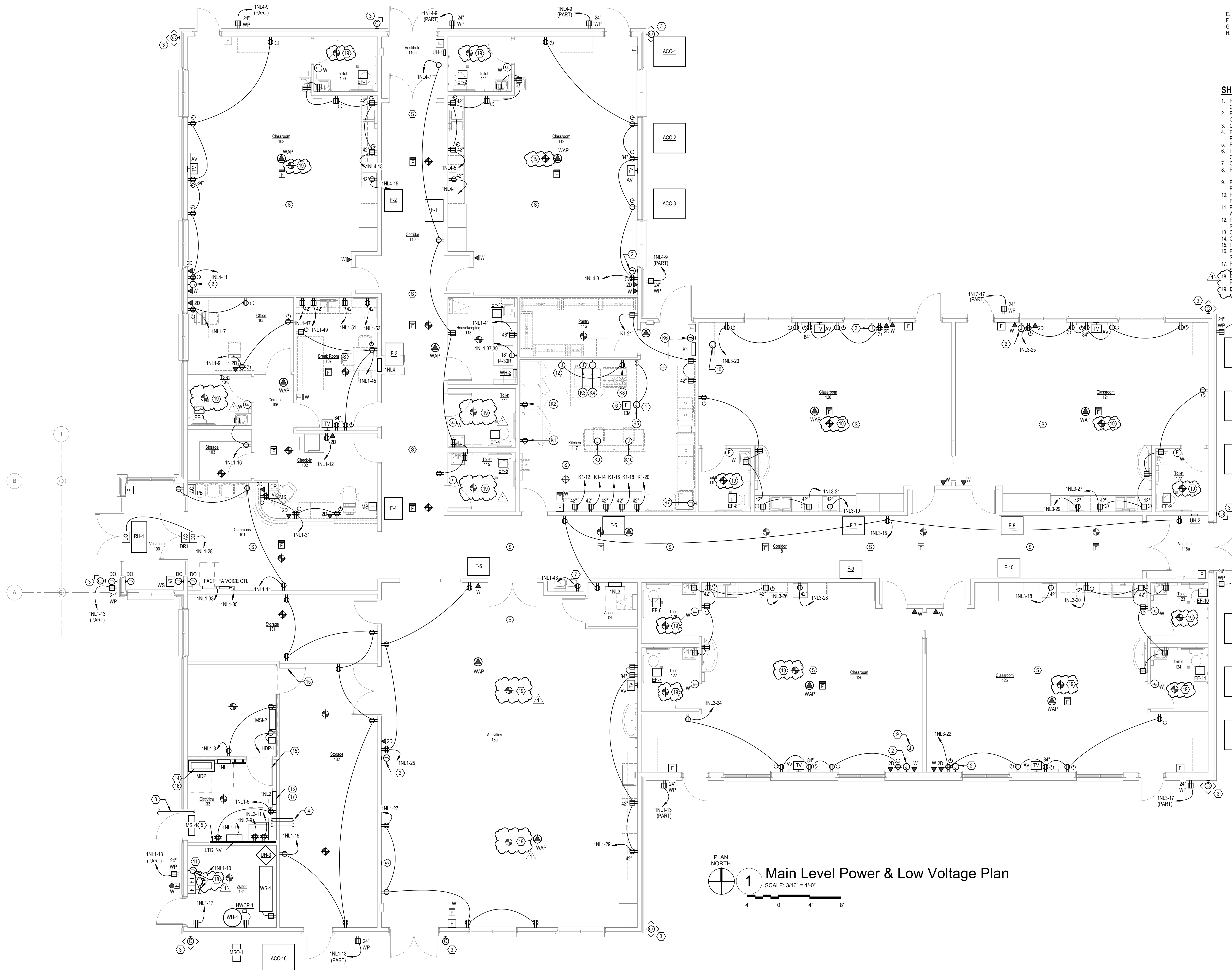
PERMISSION TO REPRODUCE ANY PART OF THIS DOCUMENT IS HEREBY GRANTED SOLELY FOR THE PURPOSE OF THE CONSTRUCTION OF THE PROJECT OR THE ARCHIVING OF THIS PROJECT. UNAUTHORIZED USE OF THIS DOCUMENT WITHOUT THE WRITTEN PERMISSION OF SPECIALIZED ENGINEERING SOLUTIONS IS PROHIBITED BY COPYRIGHT LAW.

DO NOT SCALE DRAWING. ALL DIMENSIONS AND CLEARANCES SHALL BE VERIFIED FROM APPROPRIATE SOURCES. ALL WORK SHALL BE COORDINATED PRIOR TO INSTALLATION. SEE SPECIFICATIONS.

SPECIALIZED ENGINEERING SOLUTIONS

10300 Ellison Circle
Omaha, NE 68134
Phone: 402.991.5520

SES PROJECT # 19146



Main Level Power & Low Voltage Plan

SCALE: 3/16" = 1'-0"

NO. DATE REVISIONS	
1	12/22/23 BBH
SEAL	
ARCHITECT 311 East Francis, Suite 101 NORTH PLATTE, NE 69101 308.532.0412	
STRUCTURAL ENGINEER 1221 N Street, Suite 600 NORTH PLATTE, NE 69101 402.476.9700	
MECHANICAL ENGINEER 10000 East 150th Avenue Omaha, NE 68134 Phone: 402.991.5520	
ELECTRICAL ENGINEER 10000 East 150th Avenue Omaha, NE 68134 Phone: 402.991.5520	
CIVIL ENGINEER	
INTERIOR DESIGN	
CG-ID 319 East Francis, Suite 101 North Platte, NE 69101	
SPECIALIZED ENGINEERING SOLUTIONS	
PROJECT Hoyote Community Childcare Initiative Hoyote, Colorado 80734	
PROJECT NUMBER: 21-1139	
DRAWN BY: REC	
CHECKED BY: JLK	
DATE: 12/12/2023	
SHEET NUMBER: EP-201	