

## **ADDENDUM NO. 2**

Project: NDOT – District 1 Superior St ADA Renovations

Issued: December 27, 2023

Bid Date: Thursday December 28, 2023 at 3:30 PM central

This Addendum is issued to all known plan holders before receipt of proposals.

The following shall be included with, and considered a part of, the original contract documents to the same extent as if they were included therein, for the construction of the above mentioned project. The Project Manual and Drawings shall be modified or revised as herein described. Where at variance with the original work, this Addendum shall have precedence.

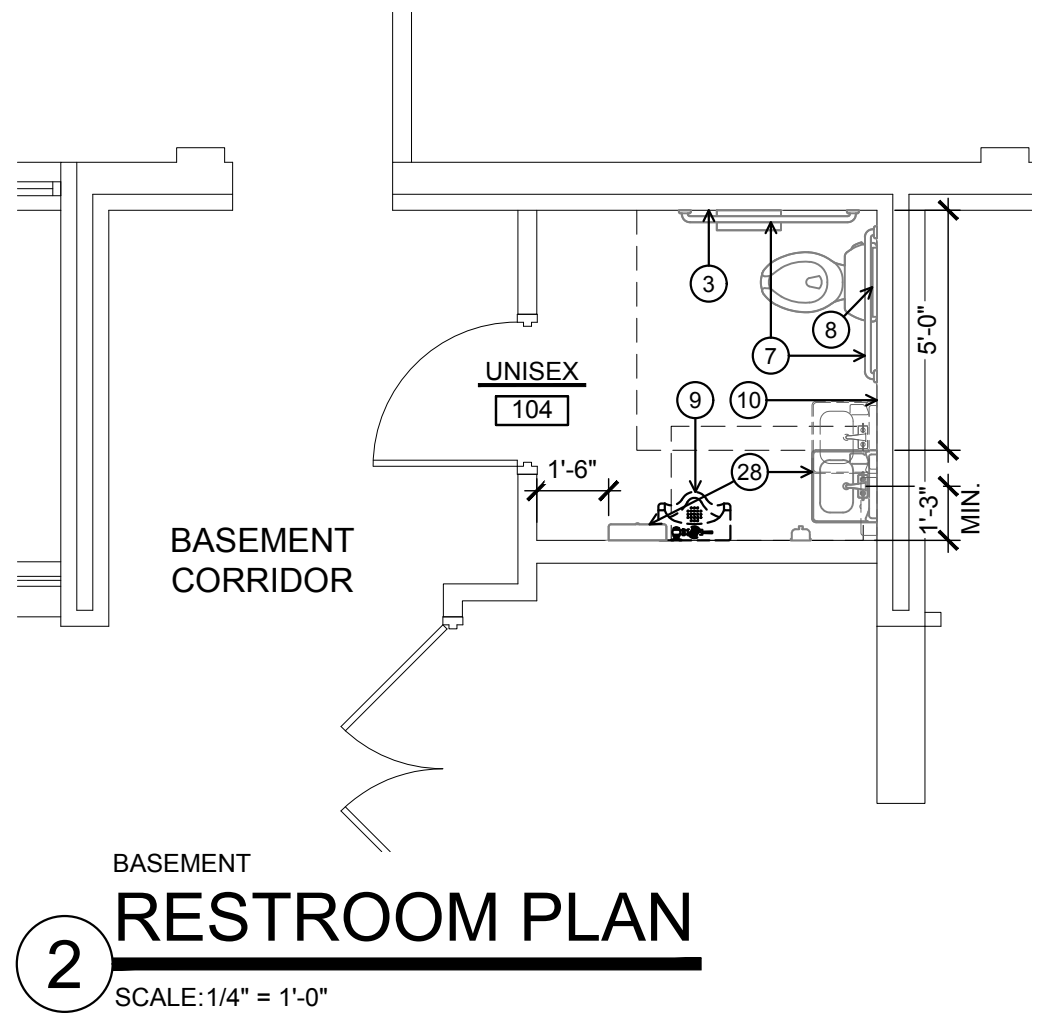
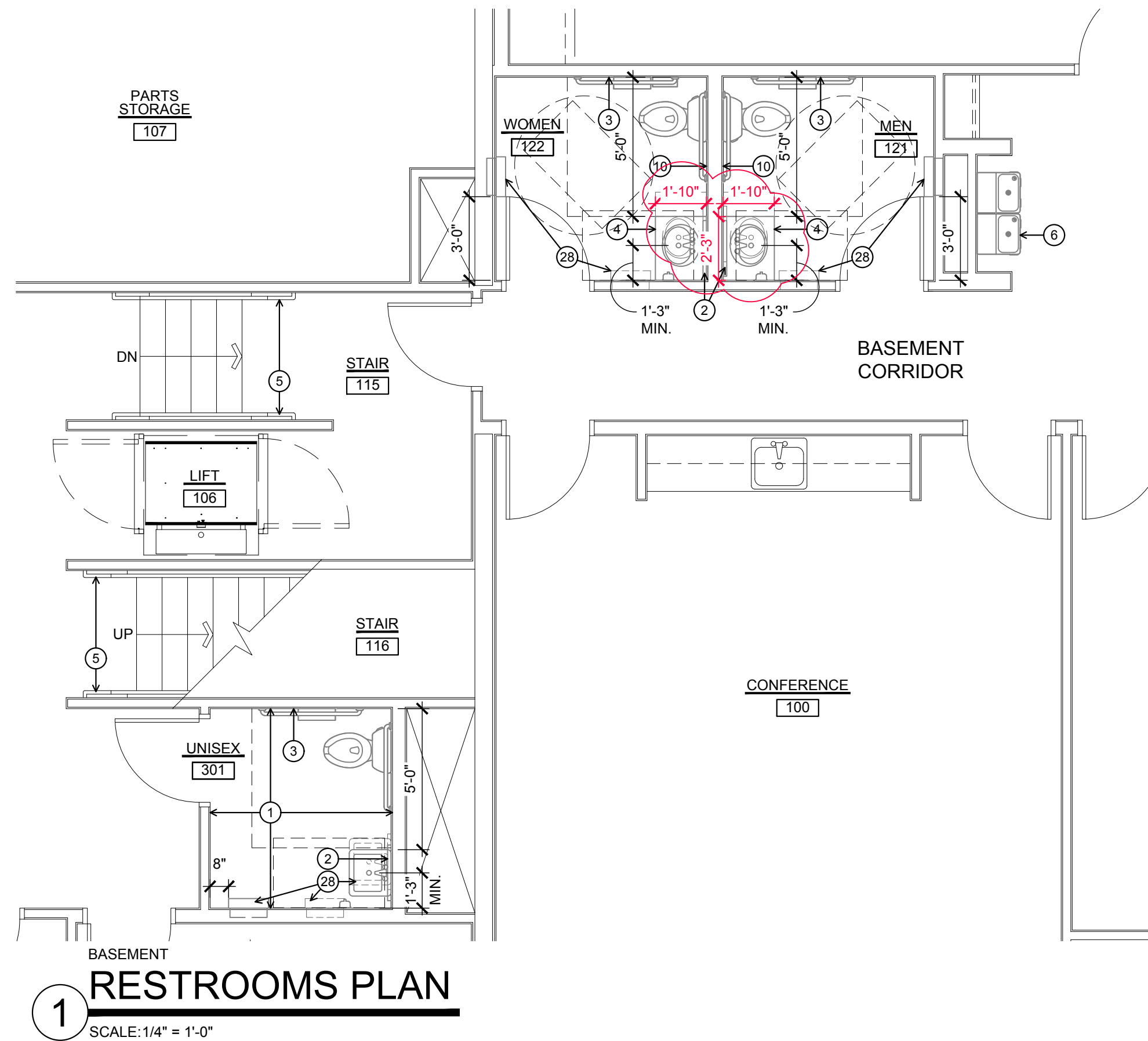
This Addendum modifies the original Bidding Documents. The Bidder must acknowledge receipt of this Addendum in the space provided on the Proposal Form. Failure to do so may subject bidder to disqualification.

### **ARCHITECTURAL ADDENDA ITEMS:**

**AD2.1**                      Drawing Sheet A100: See the attached sheet showing dimensions of solid surface countertops.

**AD2.2**                      Clarification: Backsplash for solid surface counters shall be integrated cove backsplash.

**END OF ADDENDUM 2**



REFLECTED CEILING PLAN LEGEND			
	RECESSED CAN LIGHT		SUPPLY AIR DIFFUSER
	WALL LIGHT FIXTURE		RETURN AIR DIFFUSER
	ACOUSTIC LAY-IN CEILING		

- ### GENERAL NOTES
- GC TO VERIFY WITH OWNER WHAT REMOVED ITEMS THEY WOULD LIKE TO RETAIN FOR FUTURE USE.
  - EXISTING CONSTRUCTION TO REMAIN SHALL BE PROTECTED AGAINST ANY DAMAGE DURING DEMOLITION. PATCH AND REPAIR ANY SURFACES AS REQUIRED TO MATCH ADJACENT FINISHES.
  - ALL EXISTING PAINTED WALLS TO REMAIN SHALL BE PATCHED SMOOTH TO RECEIVE NEW PAINT FINISH FROM CORNER TO CORNER, UNLESS NOTED OTHERWISE.
  - ALL DIMENSIONS ARE TO FACE OF WALL FINISHES (CLEAR DIMENSION).

- ### FLOOR PLAN KEY NOTES
- EXISTING FRP WALL FINISH TO BE REMOVED AND REPLACED WITH NEW FRP. SEE INTERIOR FINISH SCHEDULE FOR DETAILS.
  - MIRROR TO BE LOWERED SUCH THAT THE REFLECTIVE SURFACE IS AT 40" AFF MAX.
  - INSTALL VERTICAL GRAB BAR. SEE ELEVATIONS ON SHEET A200 FOR BAR LOCATION.
  - EXISTING COUNTERTOP AND BACKSPLASH TO BE REMOVED AND REPLACED WITH NEW SOLID SURFACE COUNTER WITH INTEGRAL BACKSPLASH. SEE 4/A200 FOR DETAILS. REPAIR FINISHES AS REQUIRED.
  - EXISTING RAILINGS TO REMAIN AS IS.
  - EXISTING HI/LOW DRINKING FOUNTAIN TO REMAIN. INSTALL RETROFIT KIT FOR BOTTLE FILLER STATION TO HI FOUNTAIN. REFER TO MECHANICAL DRAWINGS FOR DETAILS.
  - GRAB BARS TO BE REPOSITIONED FOR ADA COMPLIANCE. SEE ELEVATIONS ON SHEET A200.
  - TOILET SEAT COVER DISPENSER TO BE LOWERED TO 48" AFF MAX. TO DISPENSING OPENING.
  - URINAL TO BE REMOVED. CAP PLUMBING INSIDE WALL AND PATCH WALL FOR SMOOTH FINISH TO MATCH ADJACENT SURFACE.
  - WET WALL TO RECEIVE NEW TILE FINISH AND PAINT. SEE ELEVATIONS ON SHEET A200 AND INTERIOR FINISH SCHEDULE.
  - SANITARY DISPENSER TO BE LOWERED TO 48" AFF MAX. TO OPERABLE PART. SEE 8/A200 FOR DETAILS.
  - EXISTING DRINKING FOUNTAIN TO BE RELOCATED TO NEW ALCOVE AS SHOWN ON THE PLAN. INSTALL RETROFIT KIT FOR BOTTLE FILLER STATION ON BASEMENT FOUNTAIN ONLY. REFER TO MECHANICAL DRAWINGS FOR DETAILS.
  - ALL PLUMBING FIXTURES, PARTITIONS, AND WALL MOUNTED ACCESSORIES TO BE REMOVED AND DISPOSED OF.
  - EXISTING FLOOR TILE TO BE REMOVED. PREP CONCRETE FLOORS LEVEL TO RECEIVE NEW FLOOR TILE. EXISTING WALL TILE, TILE BASE, AND TILE SUBSTRATE TO BE REMOVED. WALLS TO RECEIVE NEW FINISH AS NOTED ON INTERIOR FINISH SCHEDULE.
  - REMOVE EXISTING DOOR, FRAME, AND HARDWARE. HANDICAP SENSOR ON MEN'S 211 TO BE REMOVED.
  - DASHED LINES DENOTE EXISTING WALL TO BE REMOVED.
  - NEW WALL TILE ON 5/8" CEMENT BOARD OVER EXISTING STUDS. TILE TO EXTEND TO 7'-0" AFF WITH 5/8" TYPE 'X' GWB FINISH ABOVE TO CEILING. SEE INTERIOR FINISH SCHEDULE FOR DETAILS, TYP. ALL NEW TILE AREAS.
  - NEW FLOOR FINISH - SEE INTERIOR FINISH SCHEDULE FOR DETAILS.
  - ALL NEW PLUMBING FIXTURES AND ACCESSORIES. REFER TO TOILET ACCESSORIES SCHEDULE ON SHEET A200.
  - NEW PARTITIONS AND DOORS - SEE SPECIFICATIONS.
  - NEW SOLID SURFACE COUNTER WITH INTEGRAL BACKSPLASH. SEE DETAILS ON SHEET A200.
  - NEW METAL STUDS @ 16" O.C. WITH 3-1/2" SOUND ATTENUATION BATTS AND 5/8" TYPE 'X' GWB, PNTD. TO INFILL OPENING. FINISH CORRIDOR SIDE TO MATCH EXISTING FINISHES.
  - NEW DOOR, FRAMES, AND HARDWARE.
  - NEW METAL STUDS @ 16" O.C. WITH 3-1/2" SOUND ATTENUATION BATTS. OPEN ON CHASE SIDE, RESTROOM SIDE FINISHED WITH BACKER BOARD AND TILE WITH 5/8" TYPE 'X' GWB, PNTD., ABOVE. SEE ELEVATIONS ON SHEET A200 FOR DETAILS.
  - NEW METAL STUDS @ 16" O.C. WITH NEW QUARRY TILE ON CEMENT BOARD ON THREE WALLS OF ALCOVE, FROM FLOOR TO 5'-8" AFF AND 5/8" TYPE 'X' GWB ABOVE, PNTD. 5/8" TYPE 'X' GWB ON OPPOSITE SIDE OF STUD, PNTD.
  - REMOVE EXISTING QUARRY TILE FROM WALL, TO BE REPLACED FROM DOOR FRAME TO DOOR FRAME AS SHOWN ON 5/A100.
  - NEW QUARRY TILE WAINSCOT TO MATCH EXISTING. REFER TO INTERIOR FINISH SCHEDULE FOR DETAILS.
  - PLUMBING FIXTURE/ACCESSORIES TO BE RELOCATED FOR ADA CLEARANCE AS DIMENSIONED.
  - NEW 2x2 CEILING GRID, TILE, LIGHT FIXTURES, AND DIFFUSERS. SEE INTERIOR FINISH SCHEDULE AND MECHANICAL AND ELECTRICAL DRAWINGS FOR DETAILS.

