



## ADDENDUM NO. 3

04/03/2026

# YWCA OF GRAND ISLAND WYANDOTTE RENOVATION

315 WYANDOTTE ST

**BID DATE IS 04/21/2026 AT 2PM**

The original Project Manual and Drawings for the project noted above are amended as noted in this Addendum. Included in this Addendum are Specification, Architectural, & Engineering items.

Please review all sheets and incorporate them into your set of Contract Documents.

The receipt of this Addendum shall be acknowledged by inserting its number and date in the space provided on the Bid Form.

---

## SPECIFICATIONS

### **SECTION - 00 02 00 - INVITATION TO BIDDERS**

- A. Proposals will be received until 2:00PM, Tuesday April 21st In lieu of April 9th.**

### SECTION - 081433

**A. STILE AND RAIL WOOD DOOR**

- a. Part 1 Section 1.01 B - Delete Glass
- b. Section 2.06 Accessories - Delete A. Glazed Openings - Glass provided and installed by glass company

## ARCHITECTURAL PRODUCT APPROVALS

The following materials or equipment furnished by the manufacturer listed may be substituted as equivalent, provided that each item and piece of equipment conforms to the design, quality and requirements of the specifications and drawings.

SECTION	ITEM	APPROVED
08 71 00	Door Hardware	Door Operator - Stanley Magic Force
06 41 00 and 12 36 00	Casework	JMJ Casework
07 53 00	Membrane Roofing	Versico EPDM Roofing

**END OF ARCHITECTURAL ADDENDUM**



DATE ISSUED April 3, 2026

ADDENDUM # 003

ENGINEER Engineering Technologies, Inc.
825 M Street, Suite 200
Lincoln, NE 68508

ETI PROJECT # 2024-187

PROJECT YWCA – Grand Island, NE

The Architect issues this Addendum to all known bidders before receipt of proposals. Bidder shall acknowledge the receipt of this addendum on their proposal sheet and all information contained herein shall become a part of the contract documents.

ADDENDUM:

PRIOR APPROVAL – MECHANICAL

- 1. The following manufacturers have received prior approval for bidding purposes subject to shop drawing review:
A. Ductless Mini-Splits Samsung
B. Air Outlets and Inlets Nailor Industries
C. Exhaust Fans Twin City Fans

PRIOR APPROVAL – ELECTRICAL

- 2. The following manufacturers have received prior approval for bidding purposes subject to shop drawing review:
A. List Equipment Here List Manufacturer Here
Light Fixture #1, 1E, 2, 2E, 3, 3E, 4, 4E, 5, 5E Technical Consumer Products
Light Fixture #6, 7 Brownlee, Sunpack Electronics
Light Fixtures #8 Eralux
Light Fixture #9, 10, 11 Nulite, ALL LED
Light Fixture #12,12E Nulite, Metalumen, Focal Point
Light Fixture15 ALLURE
Light Fixture #16, 16E Nora Lighting
Light Fixture #17, 17E Nulite, Day-O-Lite
Light Fixture #18, 18E Metalux, Technical Consumer Products
Light Fixture #19 Nora Lighting
Light Fixture #20, 20E Nulite, Metalumen
Light Fixtures #24, 26, 27 Eralux
Light Fixture #26, 27 Nulite
Light Fixture #30 QTL Lighting, Nora Lighting
Light Fixture 31, 31E Nulite, ALL LED
Light Fixture#33 Technical Consumer Products
Light Fixture #32 Spitzer, Visionaire Lighting
Light Fixture #34, 35 Mcgraw Edison, Visionaire Lighting
Light Fixture #X1, X2, X4 isolite, Barron Lighting Group
Fire Alarm System Potter Fire Alarm System

SPECIFICATIONS – ELECTRICAL

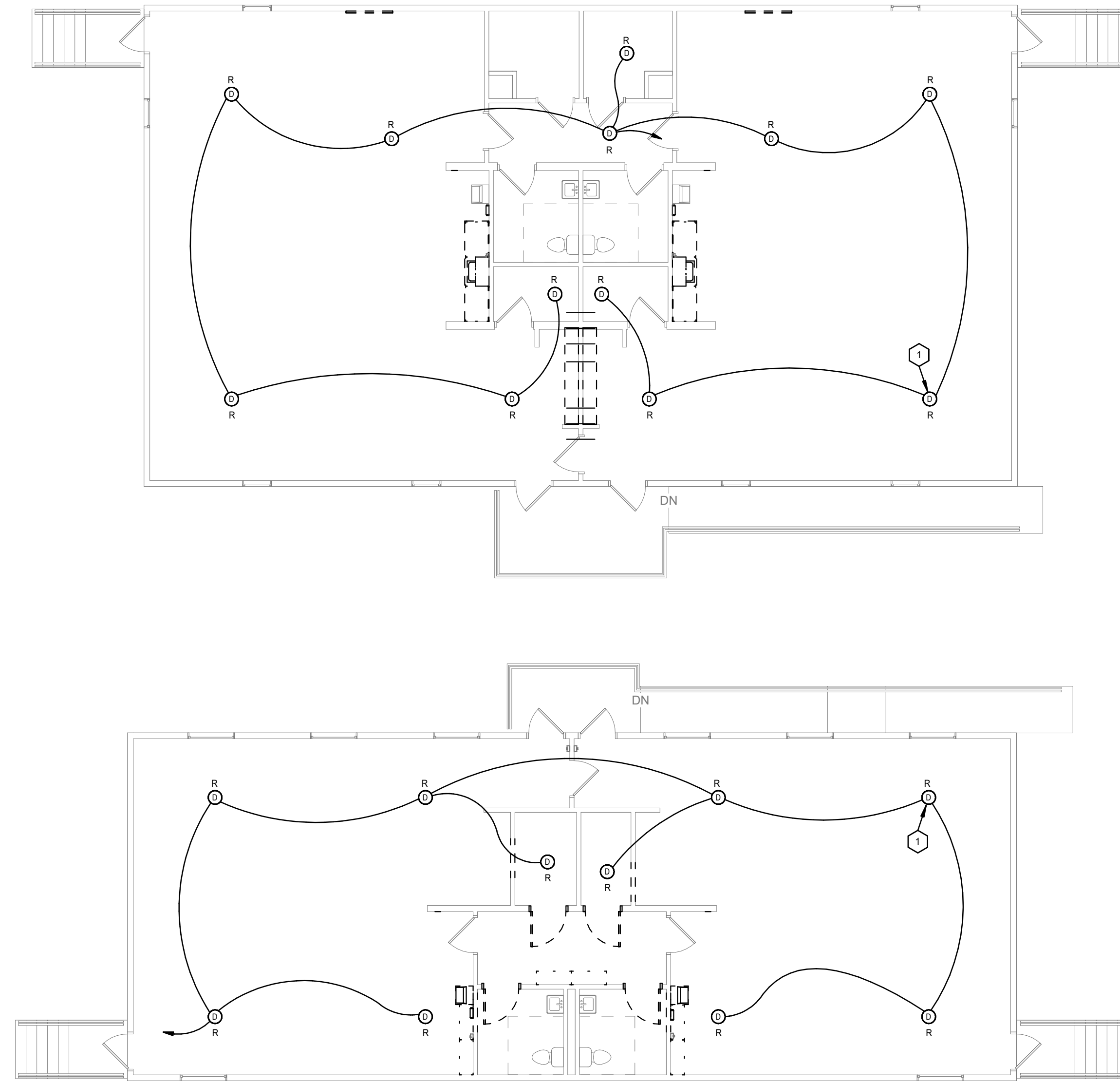
- 1. Section 27 32 43, paragraph 1.06(B)
A. Add Total Fire and Security as a Qualified Testing Agency.

2. Section 26 36 00 -Transfer Switches
  - A. This specifications section shall be deleted. The existing ATS shall be reused.

## **DRAWINGS – ELECTRICAL**

1. Sheets ED1.00, E3.01, E4.00
  - A. For information: The existing generator will remain single-phase. The existing ATS shall be reused and not replaced. Panel “X” shall be changed to single-phase with a 40A/2P main circuit breaker. Details and updated drawings shall be provided in upcoming Addendum #004.
2. Sheet ED1.01 Modulares-Electrical Demolition Plan
  - A. Added this sheet to the Contract Documents:
    - i. Remove the 120V, 9VDC smoke detectors and wiring in both modulares.
3. Sheet E2.03 Modulares-Special Systems Plan
  - A. Added this sheet to the Contract Documents:
    - i. Added fire alarm devices to both modulares. Connect to new main building fire alarm system.
    - ii. Added new Cat6 data cabling in select locations to both modulares.

END OF ADDENDUM



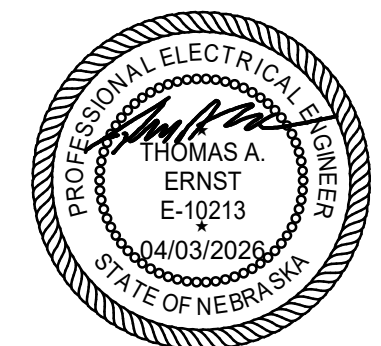
**N**  
**1** **MODULAR - ELECTRICAL DEMOLITION**  
 1/8" = 1'-0"

**SHEET NOTES**

- REMOVE EXISTING 120V, 9VDC BACKUP, SMOKE/CO DETECTORS. REMOVE 120V CIRCUIT BACK TO SOURCE AND MARK CIRCUIT BREAKER AS SPARE. RETURN DETECTORS TO OWNER. (TYPICAL).

**SEAL**

CA-0176



**REVISIONS**

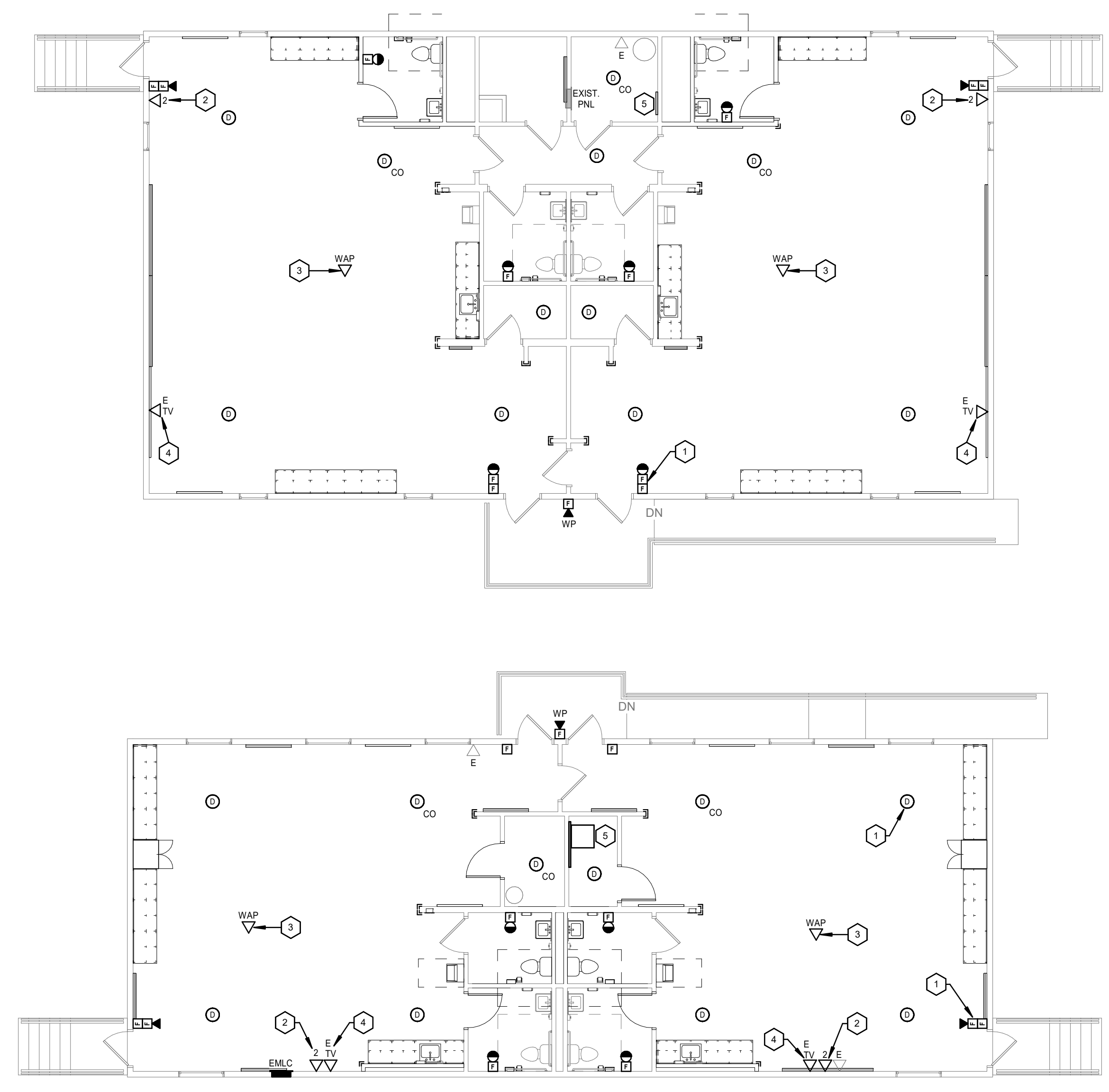
NO.	DESCRIPTION	DATE
1	ADDENDUM #3	04.03.2026

**IF THIS DRAWING IS NOT 30"x42" IT IS NOT TO SCALE**

© COPYRIGHT: Permission to reproduce all or part of this drawing is hereby granted solely for the limited purpose of production of this project or archiving. Unauthorized copying, disclosure or distribution, use without written permission of Cannon-Miller-Brygger & Associates is prohibited by copyright law.

**SHEET NOTES**

1. PROVIDE FIRE ALARM DEVICES. WIRING SHALL BE IN WIREMOLD. USE BOXES MANUFACTURED BY FIRE ALARM MANUFACTURER FOR WALL MOUNTED DEVICES. (TYPICAL)
2. PROVIDE TWO NEW CAT 6 DATA CABLES TO EXISTING RACK. PROVIDE NEW JACK AND COVERPLATE. CABLE SHALL TERMINATE ON NEW CAT 6 PATCH PANEL IN RACK. CABLES SHALL BE RUN IN WIREMOLD IF THEY ARE NOT ABLE TO BE CONCEALED.
3. PROVIDE TWO NEW CAT 6 CABLES TO WIRELESS ACCESS POINT (WAP). ACCESS POINT BY OWNER. RUN CABLES IN WIREMOLD.
4. PROVIDE ONE CAT 6 CABLE IN WIREMOLD TO EXISTING TV LOCATION.
5. EXISTING TELECOM BOARD AND DATA RACK.



**1** MODULAR - ELECTRICAL PLAN  
1/8" = 1'-0"

**SEAL**

CA-0176



**REVISIONS**

NO.	DESCRIPTION	DATE
1	ADDENDUM #3	04.03.2026

**IF THIS DRAWING IS NOT 30"x42" IT IS NOT TO SCALE**

© COPYRIGHT. Permission to reproduce all or part of this drawing is hereby granted solely for the limited purpose of production of this project or archiving. Unauthorized copying, disclosure or construction use without written permission of Cannon-Mass Rygger & Associates is prohibited by copyright law.