

**ADDENDUM  
(AD)**

PROJECT: Nebraska Department of Transportation  
District 1 Maintenance Facility  
Seward, Nebraska

AD NO.: AD-1

DATE: November 26, 2024

DAVIS DESIGN  
PROJECT NO.: 24-0034

NDOT PROJECT NO.: AFE K-102

ISSUED BY: Mike Wachal, Coordinating Professional  
Ron Larson, Architect  
Frank Doland, Civil Engineer (Benesch)  
Darin Sperling, Structural Engineer  
Megan Ediger, Interior Designer  
Brandon Sire, Mechanical Engineer  
Jon Dalton, Electrical Engineer

*This addendum is issued by the Architect to all known bidders before receipt of proposals, for the purpose of explaining, interpreting, or modifying the original plans and specifications. When enumerated by the bidder upon the proposal sheet, the information or instructions given hereon will be equally binding upon all parties as if included in the original plans and specifications.*

**BIDDER MUST ENTER THE NUMBER OF THIS ADDENDUM ON HIS PROPOSAL SHEET**

**THE FOLLOWING ITEMS ARE APPLICABLE TO THE SPECIFICATIONS:**

**AD-1, ITEM 1:**

**In reference to Section 133419 – METAL BUILDING SYSTEMS**, under Section 2.0 PRODUCTS, Article 2.1 MANUFACTURERS, Paragraph A:

Subject to meeting the requirements of the specifications and drawings, include American Buildings as an acceptable Pre-Engineered Metal Building manufacturer.

**THE FOLLOWING ITEMS ARE APPLICABLE TO THE DRAWINGS:**

**AD-1, ITEM 2:**

**In reference to Sheet S-001 – General Notes, Schedules, & Details**, see attached revised sheet S-001 for revisions to the Reinforcing Schedule and Pad Footing Schedule.

**AD-1, ITEM 3:**

**In reference to Sheet S-101 – Foundation Plan**, see attached revised sheet S-101 for revisions to the Foundations Plan and Detail 2 Jib Crane Foundation. Detail 3 60x60 Concrete Pier Detail has been added to sheet S-101.

Nebraska Department of Transportation  
District 1 Maintenance Facility  
Seward, Nebraska  
November 26, 2024  
Addendum No. 1

**AD-1, ITEM 4:**

In reference to Sheet S-102 – Slab Jointing Plan, see attached revised sheet S-102 for revisions to the Slab Jointing Plan.

**AD-1, ITEM 5:**

In reference to Sheet A-601 – DOOR SCHEDULE AND DETAILS, Overhead Door No. 110D, which is a 16'-0" width x 16'-0" height shall be added to the Schedule for Overhead Doors. Door 110D has the same construction and finish as all others listed in this schedule.

**END AD-1**







# SCHEDULE PARTITIONS

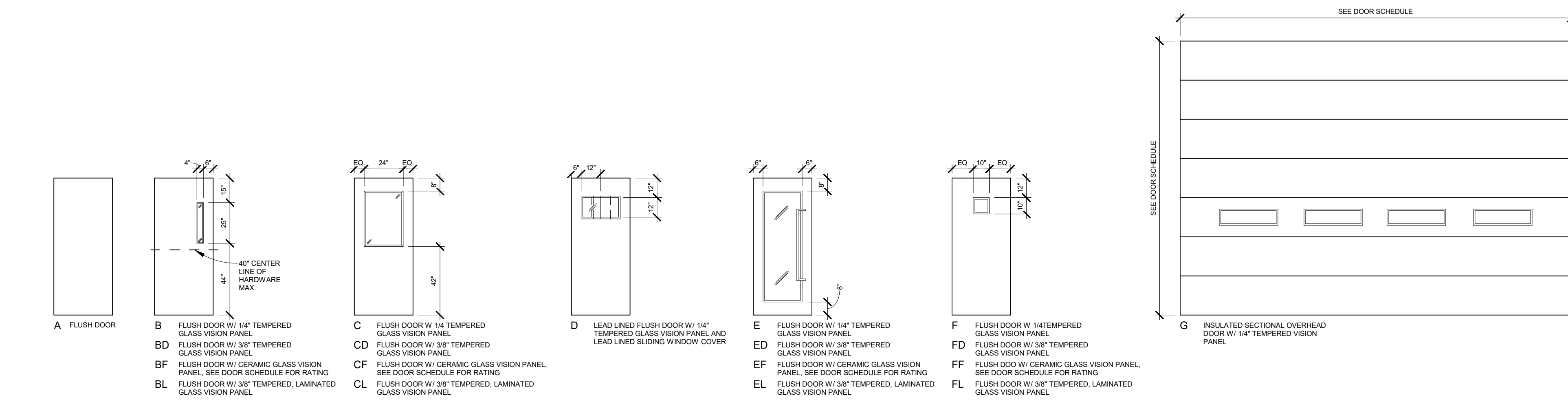
MARK	SUPPORT	DESCRIPTION	WIDTH	HEIGHT	FIRE RATING	STC RATING	UL LISTING	INSULATION	SPECIAL REQUIREMENTS	COMMENTS
	<varies>	<varies>	<varies>	<varies>	<varies>	<varies>	<varies>	<varies>		
8	2 1/2" DRYWALL STUDS SPACED @ 16" O.C.	ONE LAYER OF 5/8" TYPE X GWB ROOM SIDE	3 1/8"	TO STRUCTURAL DECK ABOVE CEILING						
9	3 5/8" DRYWALL STUDS SPACED @ 16" O.C.	ONE LAYER OF 5/8" TYPE X GWB EACH SIDE	4 1/4"	TO STRUCTURAL DECK ABOVE CEILING						
9A	3 5/8" DRYWALL STUDS SPACED @ 16" O.C.	ONE LAYER OF 5/8" TYPE X GWB EACH SIDE	4 1/4"	TO 4" ABOVE CEILING LINE						
10	3 5/8" DRYWALL STUDS SPACED @ 16" O.C.	ONE LAYER OF 5/8" TYPE X GWB ROOM SIDE	4 1/4"	TO STRUCTURAL DECK ABOVE CEILING		45-49		3" SOUND ATTEN. BLKT.		
20	6" DRYWALL STUDS SPACED @ 16" O.C.	ONE LAYER OF 5/8" TYPE X GWB EACH SIDE	7 1/4"	TO STRUCTURAL DECK ABOVE CEILING		45-49		3" SOUND ATTEN. BLKT.		
22	6" DRYWALL STUDS SPACED @ 16" O.C.	ONE LAYER OF 5/8" TYPE X GWB EACH SIDE	7 1/4"	TO STRUCTURAL DECK ABOVE CEILING	1 HR	45-49		3" SOUND ATTEN. BLKT.		
23a	6" METAL STUDS SPACED @ 16" O.C.	ONE LAYER OF 5/8" TYPE X GWB EACH SIDE	7 1/4"	TO BOTTOM OF STRUCTURE ABOVE	S	45-49		3" SOUND ATTEN. BLKT.		

# SCHEDULE DOORS

DOOR NUMBER	DOOR							FRAME						
	WIDTH	HEIGHT	THICKNESS	ELEVATION	CONSTRUCTION	FINISH	FIRE RATING	ELEVATION	MATERIAL	FINISH	JAMB	HEAD	HARDWARE	COMMENTS
101A	3'-0"	7'-0"	1 3/4"	B	Hollow Metal	Painted	-	HMF-1	H.M.	Painted	5/ A-502	4/ A-502	HW#11	
102A	3'-0"	7'-0"	1 3/4"	B	Hollow Metal	Painted	-	HMF-1	H.M.	Painted	4/ A-601	3/ A-601	HW#11	
106A	3'-0"	7'-0"	1 3/4"	B	Hollow Metal	Painted	-	HMF-1	H.M.	Painted	5/ A-502	4/ A-502	HW#11	
110A	3'-0"	7'-0"	1 3/4"	B	Stainless Steel	Refer to Specs	-	HMF-1	Stainless Steel	Refer to Specs	5/ A-502	4/ A-502	HW#9	
110C	3'-0"	7'-0"	1 3/4"	B	Stainless Steel	Refer to Specs	-	HMF-1	Stainless Steel	Refer to Specs	8/ A-502	7/ A-502	HW#10	
113	3'-0"	7'-0"	1 3/4"	A	Hollow Metal	Painted	45 Minute	HMF-1	H.M.	Painted	4/ A-601	3/ A-601	HW#8	
114	3'-0"	7'-0"	1 3/4"	A	Hollow Metal	Painted	45 Minute	HMF-4	H.M.	Painted	4/ A-601	3/ A-601	HW#3	
115	3'-0"	7'-0"	1 3/4"	B	Hollow Metal	Painted	45 Minute	HMF-1	H.M.	Painted	4/ A-601	3/ A-601	HW#12	
116A	3'-0"	7'-0"	2"	A	Aluminum	Pre-finished	-	AL-1	Aluminum	Pre-finished	2/ A-502	1/ A-502	HW#1	
116B	3'-0"	7'-0"	2"	E	Aluminum	Pre-finished	-	AL-1	Aluminum	Pre-finished	4/ A-601	3/ A-601	HW#2	
117	3'-0"	7'-0"	1 3/4"	A	Solid Core Wood Door	Stain	-	HMF-1	H.M.	Painted	4/ A-601	3/ A-601	HW#4	
118	3'-0"	7'-0"	1 3/4"	B	Solid Core Wood Door	Stain	-	HMF-4	H.M.	Painted	4/ A-601	3/ A-601	HW#3	
119	3'-0"	7'-0"	1 3/4"	A	Solid Core Wood Door	Stain	-	HMF-1	H.M.	Painted	4/ A-601	3/ A-601	HW#5	
121	3'-0"	7'-0"	1 3/4"	A	Solid Core Wood Door	Stain	-	HMF-1	H.M.	Painted	4/ A-601	3/ A-601	HW#7	
122	3'-0"	7'-0"	1 3/4"	A	Solid Core Wood Door	Stain	-	HMF-1	H.M.	Painted	4/ A-601	3/ A-601	HW#4	
123	3'-0"	7'-0"	1 3/4"	A	Solid Core Wood Door	Stain	-	HMF-1	H.M.	Painted	4/ A-601	3/ A-601	HW#7	
124	3'-0"	7'-0"	1 3/4"	A	Solid Core Wood Door	Stain	-	HMF-1	H.M.	Painted	4/ A-601	3/ A-601	HW#7	
125A	3'-0"	7'-0"	1 3/4"	B	Hollow Metal	Painted	-	HMF-4	H.M.	Painted	5/ A-502	4/ A-502	HW#11	
125B	3'-0"	7'-0"	1 3/4"	B	Solid Core Wood Door	Stain	-	HMF-1	H.M.	Painted	4/ A-601	3/ A-601	HW#6	
202	4'-0"	7'-0"	1 3/4"	A	Hollow Metal	Painted	45 Minute	HMF-1	H.M.	Painted	4/ A-601	3/ A-601	HW#7	

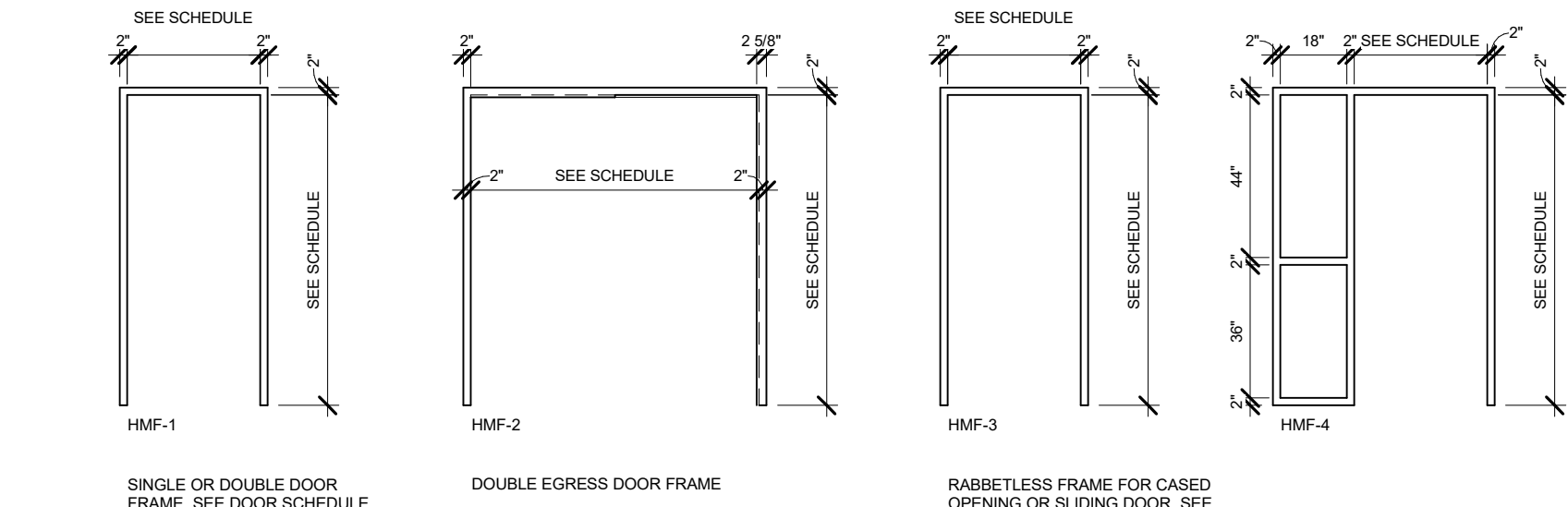
# SCHEDULE OVERHEAD DOORS

DOOR NUMBER	Opening Width	Opening Height	Panel Thickness	DOOR			FRAME							
				ELEVATION	CONSTRUCTION	FINISH	FIRE RATING	ELEVATION	MATERIAL	FINISH	JAMB	HEAD	HARDWARE	COMMENTS
101B	16'-0"	16'-0"	3"	G		Pre-finished	-	-	Galv. Steel Track	-	6/ A-501	5/ A-501	HW#13	OVERHEAD DOOR
102B	16'-0"	16'-0"	3"	G		Pre-finished	-	-	Galv. Steel Track	-	6/ A-501	5/ A-501	HW#13	OVERHEAD DOOR
103	16'-0"	16'-0"	3"	G		Pre-finished	-	-	Galv. Steel Track	-	6/ A-501	5/ A-501	HW#13	OVERHEAD DOOR
104	16'-0"	16'-0"	3"	G		Pre-finished	-	-	Galv. Steel Track	-	6/ A-501	5/ A-501	HW#13	OVERHEAD DOOR
105	16'-0"	16'-0"	3"	G		Pre-finished	-	-	Galv. Steel Track	-	6/ A-501	5/ A-501	HW#13	OVERHEAD DOOR
106	16'-0"	16'-0"	3"	G		Pre-finished	-	-	Galv. Steel Track	-	6/ A-501	5/ A-501	HW#13	OVERHEAD DOOR
107	16'-0"	16'-0"	3"	G		Pre-finished	-	-	Galv. Steel Track	-	6/ A-501	5/ A-501	HW#13	OVERHEAD DOOR
108	16'-0"	16'-0"	3"	G		Pre-finished	-	-	Galv. Steel Track	-	6/ A-501	5/ A-501	HW#13	OVERHEAD DOOR
109B	16'-0"	16'-0"	3"	G		Pre-finished	-	-	Galv. Steel Track	-	6/ A-501	5/ A-501	HW#13	OVERHEAD DOOR
110B	16'-0"	16'-0"	3"	G		Pre-finished	-	-	Galv. Steel Track	-	6/ A-501	5/ A-501	HW#13	OVERHEAD DOOR
110D	16'-0"	16'-0"	3"	G		Pre-finished	-	-	Galv. Steel Track	-	6/ A-501	5/ A-501	HW#13	OVERHEAD DOOR



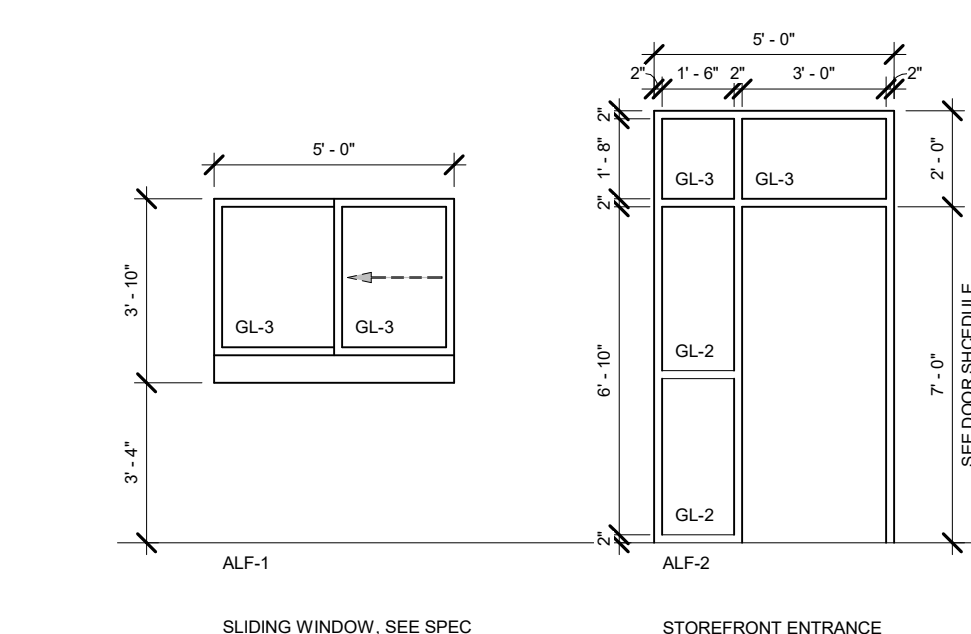
## 1 DOOR ELEVATIONS

1/4" = 1'-0"



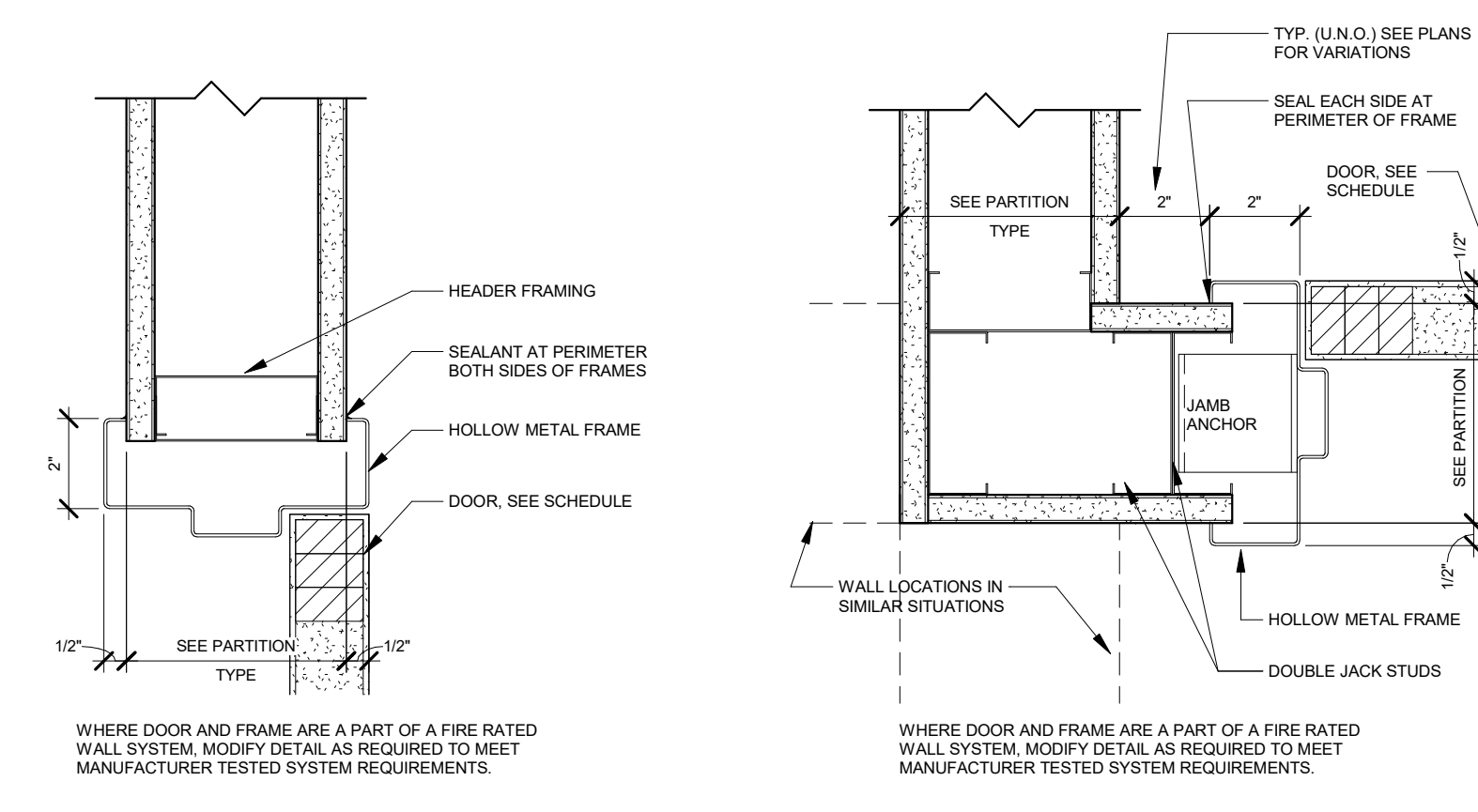
## 2 DOOR FRAME ELEVATIONS

1/4" = 1'-0"



## 6 ALUMINUM FRAME ELEVATIONS

1/4" = 1'-0"



## 3 DOOR HEAD DETAIL

3" = 1'-0"

## 4 DOOR JAMB DETAIL

3" = 1'-0"

## 5 DOOR JAMB DETAIL

3" = 1'-0"

### GENERAL DOOR HARDWARE NOTES

- ALL HOLLOW METAL DOORS TO BE ANCHORED WITH 5/16" THREADED SLEEVE AND NUTS. SEE SPEC SECTIONS 10000 AND ROOM FINISH SCHEDULE.
- ALL FRAMES ARE TO BE PAINTED. SEE INTERIOR DRAWINGS FOR HOLLOW METAL FRAME COLOR.
- ALL LOCKS TO BE KEYPED TO "MASTER" (COORDINATE WITH FACILITIES MANAGER).

### PARTITION TYPES GENERAL NOTES:

- PROVIDE GWB TYPE MOLD RESISTANT WITHIN 4'-0" OF PLUMBING FIXTURE AND TO HEIGHT OF 2'-0" ABOVE FIXTURE IF ROOM FINISH SCHEDULE DOES NOT CALL FOR TILE FINISH.
- SEE FIRE RATING AND SEPARATION PLANS FOR ADDITIONAL PARTITION TYPE INFORMATION/LOCATIONS.
- PROVIDE FIRE STOPPING AT PENETRATIONS THROUGH & AT PERIMETERS OF FIRE RATED PARTITIONS AND SMOKE BARRIERS AS REQUIRED BY AUTHORITIES HAVING JURISDICTION.
- SMOKE PARTITIONS SHALL HAVE GWB FROM FLOOR TO STRUCTURE ABOVE, EVEN IF THE PARTITION SCHEDULE ONLY CALLS FOR DRYWALL TO 2'-0" ABOVE CEILING. ALL PENETRATIONS AWAY AND EXISTING AND PERIMETER SHALL BE SEALED ON BOTH SIDES OF THE WALL. UNTHREADED PERIMS SHALL BE PERMITTED. IF SMOKE PARTITION HAS AN ACOUSTICAL RATING, SEE GENERAL NOTE 1 FOR SEALANT. IF PARTITION IS NOT ACOUSTICALLY RATED, ACOUSTICAL SEALANT OR DRYWALL TAPE AND JOINT COMPOUND MAY BE USED TO SEAL THE PERIMETER AND PENETRATIONS. IF BOTH SIDES OF THE WALL ARE NOT ACCESSIBLE, IT IS PERMISSIBLE TO SEAL ONLY ONE FACE OF THE WALL. PREFERABLY THE CORRIDOR SIDE, REGARDLESS OF THE FACE SELECTED TO BE SEALED, THAT SAME FACE SHALL BE SEALED CONTINUOUSLY FROM BUILDING EXTERIOR, FIRE RATED PARTITION, SMOKE BARRIER OR SMOKE PARTITION TO ANOTHER EXTERIOR WALL, FIRE RATED PARTITION, SMOKE BARRIER OR SMOKE PARTITION.
- LONG LEGGED TOP TRACK WILL BE REQD. ON ALL PARTITIONS SPANNING FROM DOOR TO STRUCTURE ABOVE. SEE DETAILS FOR ADDITIONAL INFORMATION.
- PROVIDE CONTINUOUS ACOUSTICAL SEALANT AT PENETRATIONS THROUGH & AT PERIMETERS OF ACOUSTICAL WALLS (NEW AND EXISTING).
- WHERE A PARTITION IS SHOWN ON THE PLAN AS A CONTINUATION OF OR ADJACENT TO AN EXISTING PARTITION OR PARTITION CORNER, AND NO OFFSET DIMENSIONS ARE GIVEN, ALIGN FACE OF WALL WITH THE EXISTING WALL. PROVIDE SMOOTH TRANSITION BETWEEN NEW WORK AND EXISTING. THIS WORK MAY BE PERMITTED AS IF THE WALL IS 1 HOUR FIRE RATED, UNLESS THE REFLECTED CEILING PLAN SPECIFICALLY CALLS FOR A 1 HOUR FIRE RATED CEILING SYSTEM IN THE CORRIDOR. ALL OTHER METHODS OF ACHIEVING A FIRE PARTITION PER THE BC ARE PROHIBITED.
- PROVIDE CONTINUOUS SEALANT AT ALL PENETRATIONS OF EXTERIOR WALLS (NEW AND EXISTING). NO UNSEALED OPENINGS SHALL BE PERMITTED.
- METAL INTERIOR FRAMING TO BE 2x4 UNLESS NOTED OTHERWISE. AT DOOR FRAME JAMB ANCHOR PROVIDE 18 GA. METAL FRAMING DOORS WIDER THAN 3'-0" PROVIDE 18 GA. METAL STUDS.
- IF PARTITION HAS FIRE RATING REQUIREMENT, PATCH OR REPAIR TO MEET FIRE RATING REQUIREMENTS. SEAL ALL PENETRATIONS.

**davis design**  
1221 N Street, Suite 600  
Lincoln, NE 68508

**benesch**  
Alfred Benesch & Company  
Lincoln, Nebraska 68508  
402-479-2200

**Norfolk**  
130 South 5th Street  
Norfolk, NE 68701

**Vermillion**  
15 East Main, Suite 201  
Vermillion, SD 57069

ARCHITECT  
RONALD C. LARSON  
A-480  
11/29/2024  
STATE OF NEBRASKA

Davis Design's NEBEA Certificate of Authorization #CA0559

## Nebraska Department of Transportation

2500 S HWY 15  
Seward, NE 68434

## Seward Maintenance Facility - 100% BID Package

JOB # | 24-0034  
ISSUE DATE | 11-18-2024  
ISSUE FOR | Construction Documents

Revisions  
ID | Date | Description  
1 | 11-26-2024 | AD-1

## Door Schedule and Details

SHEET NUMBER  
**A-601**