



ADDENDUM NO. 3

DATE: October 2, 2024

TO: Notice to All Bidders

OWNER NAME: Nebraska Department of Administrative Services (NDAS)

PROJECT NAME: Nebraska Law Enforcement Training Center Expansion (NLETC)

PROJECT NO.: 78996500

This addendum supplements, modifies, deletes, or adds to the original bid documents and all items included herein shall become part of the contract documents as if originally called for in the drawings, specifications and bid documents. Bidder shall acknowledge receipt of this addendum on the bid form when returning your bid. Failure to acknowledge this addendum may result in your bid being declared non-responsive.

A. General:

1. Proposals will be received until 11:00 A.M. on Wednesday, October 9, 2024 – the date remains unchanged. Sealed Proposals will be publicly opened and read aloud.

B. Drawings:

1. Drawing FR-A-800: Signage plan was revised.
2. Drawing FR-A-801: Signage plan was revised.
3. Drawing FR-A-802: Signage plan was revised.
4. Drawing FR-A-803, Signage plan was revised.
5. Drawing FR-A-804, Signage plan was revised.
6. Drawing FR-A-810: Signage details were revised.
7. Drawing FR-A-611: Door details were revised.
8. Drawing FR-A-610: Door schedule was revised.
9. Sheet FR-MH-101B: Replace the sheet with attached.
10. Sheet FR-PP-100B: Replace the sheet with attached.
11. Sheet FR-PP-101B: Replace the sheet with attached.
12. Sheet FR-PP-102B: Replace the sheet with attached.

C. Supplementary Instructions:

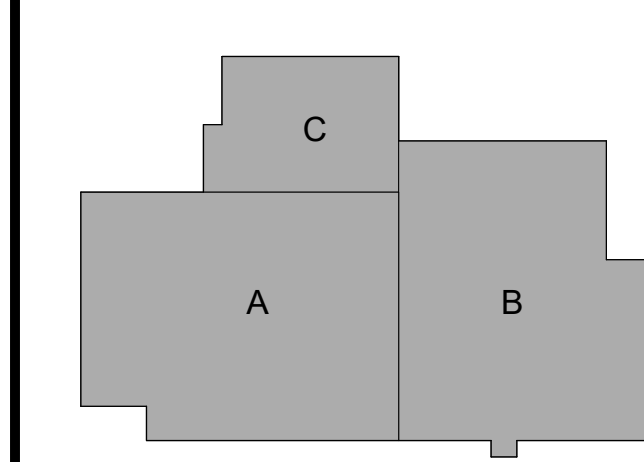
1. Sheet ST-C-401A: Change the water service size at Keynote 2 from 2" to 3".
2. Sheet FR-P-501: At Detail 5, change the detail from what is shown, to be similar to Detail 5 on Sheet EV-P-501, except that the lawn sprinkler piping shall be 2" in size and the water service is 3" in size.

D. Attachments

1. Revised Drawings (12 sheets)

End of Addendum No. 3

DOOR #	ROOM NAME	DOOR					DOOR					FRAME					COMMENTS
		DOOR TYPE	DOOR MATERIAL	DOOR FINISH	DOOR WIDTH	DOOR HEIGHT	FIRE-RATING	ACOUSTIC RATING	HARDWARE SET	FRAME TYPE	FRAME MATERIA L	FRAME FINISH	JAMB	HEAD	SILL		
EX-120.1	VESTIBULE	F2	HM	EP-07B	6'-0"	7'-0"			14	2	HM	EP-07B	J1	H1	S1		
EX-120.2	VESTIBULE	F2	HM	EP-07B	6'-0"	7'-0"			14	2	HM	EP-07B	J1	H1	S1		
EX-130.3	RANGE	F	HM	EP-07B	3'-0"	7'-0"			1	1	HM	EP-07B	J6	H6	S6		
EX-131.1	VEHICLE VESTIBULE	F2	HM	EP-07B	10'-0"	7'-0"			4	2	HM	EP-07B	J1	H1	S1		
EX-131.2	VEHICLE VESTIBULE	F2	HM	EP-07B	3'-0"	7'-0"			5	1	HM	EP-07B	J1	H1	S1		
EX-133.1	AMMUNITION STORAGE	F2	HM	EP-07B	6'-0"	7'-0"			26	2	HM	EP-07B	J1	H1	S1		
EX-142.1	IDF	F2	HM	EP-07B	6'-0"	7'-0"			2	2	HM	EP-07B	J1	H1	S1		
EX-142.2	ELECTRICAL	F2	HM	EP-07B	6'-0"	7'-0"			2	2	HM	EP-07B	J1	H1	S1		
EX-143.1	FIRE PROTECTION	F2	HM	EP-07B	6'-0"	7'-0"			3	2	HM	EP-07B	J1	H1	S1		
EX-145.1	AIR HANDLING UNIT	F2	HM	EP-07B	6'-0"	7'-0"			3	2	HM	EP-07B	J1	H1	S1		
EX-170.1.1	CIRCULATION	F2	HM	EP-07B	6'-0"	7'-0"			26	2	HM	EP-07B	J1	H1	S1		
EX-1102.1	STAIRCASE	F	HM	EP-07B	3'-0"	7'-0"			1	1	HM	EP-07B	J1	H1	S1		
EX-1109.1	MECHANICAL	F2	HM	EP-07B	6'-0"	7'-0"			2	2	HM	EP-07B	J1	H1	S1		
EX-1110.1	CIRCULATION	F2	HM	EP-07B	6'-0"	7'-0"			2	2	HM	EP-07B	J1	H1	S1		
EX-1113.3	ROOM 5	F	HM	EP-07B	3'-0"	7'-0"			36	1	HM	EP-07B	J1	H1	S1		
EX-1162.2	ROOM 7	F	HM	EP-07B	3'-0"	7'-0"			3	1	HM	EP-07B	J1	H1	S1		
EX-1117.2	ROOM 8	F2	HM	EP-07B	6'-0"	7'-0"			3	2	HM	EP-07B	J1	H1	S1		
EX-1118.1	ROOM 9	F2	HM	EP-07B	6'-0"	7'-0"			2	2	HM	EP-07B	J1	H1	S1		
EX-1119.1	STAIRCASE	F	HM	EP-07B	3'-0"	7'-0"			34	1	HM	EP-07B	J1	H1	S1		
EX-1119.2	STAIRCASE	F	HM	EP-07B	3'-0"	7'-0"			33	1	HM	EP-07B	J1	H1	S1		
EX-1202.1	CIRCULATION	F	HM	EP-07B	3'-0"	7'-0"			39	1	HM	EP-07B	J1	H1	S1		
EX-1301.1	CIRCULATION	F2	HM	EP-07B	6'-0"	7'-0"			41	2	HM	EP-07B	J1	H1	S1		
EX-1304.1	STOR.	F	HM	EP-07B	3'-0"	7'-0"			42	1	HM	EP-07B	J1	H1	S1		
103.1	CLASSROOM	V1	WD		3'-0"	7'-0"			19	1	HM	EP-07B	J2	H2	S2		
103.2	CLASSROOM	V1	WD		3'-0"	7'-0"			19	1	HM	EP-07B	J2	H2	S2		
104.1	CLASSROOM	V1	WD		3'-0"	7'-0"			19	1	HM	EP-07B	J2	H2	S2		
104.2	CLASSROOM	V1	WD		3'-0"	7'-0"			19	1	HM	EP-07B	J2	H2	S2		
105.1	CLASSROOM & A.V. STORAGE	J	WD		4'-0"	7'-0"			18	1	HM	EP-07B	J2	H2	S2		
106.1	CLASSROOM & A.V. STORAGE	J	WD		4'-0"	7'-0"			18	1	HM	EP-07B	J2	H2	S2		
107.1	ELECTRICAL CLOSET	HM	EP-07B	4'-0"	7'-0"				20	1	HM	EP-07B	J2	H2	S2		
109.1	CUBICLE AREA	HM	EP-07B	6'-0"	7'-0"				22	2	HM	EP-07B	J2	H2	S2		
109.2	CUBICLE AREA	HM	EP-07B	3'-0"	7'-0"				21	1	HM	EP-07B	J2	H2	S2		
110.1	CONFERENCE ROOM	F	WD		3'-0"	7'-0"			18	3	HM	EP-07B	J3	H3	S2		
111.1	OFFICE	F	WD		3'-0"	7'-0"			16	3	HM	EP-07B	J3	H3	S2		
112.1	OFFICE	F	WD		3'-0"	7'-0"			16	3	HM	EP-07B	J3	H3	S2		
113.1	OFFICE	F	WD		3'-0"	7'-0"			16	3	HM	EP-07B	J3	H3	S2		
114.1	OFFICE	F	WD		3'-0"	7'-0"			16	3	HM	EP-07B	J3	H3	S2		
115.1	OFFICE	F	WD		3'-0"	7'-0"			16	3	HM	EP-07B	J3	H3	S2		
116.1	OFFICE	F	WD		3'-0"	7'-0"			16	3	HM	EP-07B	J3	H3	S2		
117.1	STAFF LOCKERS	F	HM	EP-07B	3'-0"	7'-0"			24	1	HM	EP-07B	J3	H3	S2		
118.1	CHANGING ROOM	F	HM	EP-07B	3'-0"	7'-0"			23	1	HM	EP-07B	J3	H3	S2		
119.1	CHANGING ROOM	F	HM	EP-07B	3'-0"	7'-0"			23	1	HM	EP-07B	J3	H3	S2		
121.1	WEAPONS CLEANING	HM	EP-07B	3'-0"	7'-0"			45 MIN	24	1	HM	EP-07B	J2	H2	S2		
121.2	WEAPONS CLEANING	HM	EP-07B	3'-0"	7'-0"			45 MIN	24	1	HM	EP-07B	J2	H2	S2		
122.1	WEAPONS CLEANING SUPPLY	F	HM	EP-07B	3'-0"	7'-0"			11	2	HM	EP-07B	J3	H3	S2		
124.1	J.C.	F	HM	EP-07B	3'-0"	7'-0"			18	1	HM	EP-07B	J3	H3	S2		
124.2	J.C.	F	HM	EP-07B	3'-0"	7'-0"			18	1	HM	EP-07B	J3	H3	S2		
126.1	MDF	F2	HM	EP-07B	6'-0"	7'-0"			10	2	HM	EP-07B	J2	H2	S2		
127.1	WEAPONS VAULT	X	HM	EP-07B	3'-0"	6'-8"		90 MIN	26	1	HM	EP-07B	J4	H4	S4		
130.1	RANGE	F	HM	EP-07B	4'-0"	7'-0"			12	1	BHM	EP-07B	J5	H5	S5	LVB BULLET RESISTANT	
130.2	RANGE	F	HM	EP-07B	4'-0"	7'-0"			12	1	BHM	EP-07B	J5	H5	S5	LVB BULLET RESISTANT	
130.3	RANGE	F	HM	EP-07B	3'-0"	7'-0"			9	1	HM	EP-07B	J5	H5	S5	LVB BULLET RESISTANT	
130.4	RANGE	F2	HM	EP-07B	10'-0"	7'-0"			8	2	HM	EP-07B	J5	H5	S5	LVB BULLET RESISTANT	
132.1	BRASS STORAGE	F2	HM	EP-07B	6'-0"	7'-0"			6	2	HM	EP-07B	J2	H2	S2		
133.1	AMMUNITION STORAGE	F2	HM	EP-07B	6'-0"	7'-0"			10	2	HM	EP-07B	J2	H2	S2		
134.1	TARGET STORAGE	F2	HM	EP-07B	6'-0"	7'-0"			11	2	HM	EP-07B	J2	H2	S2		
135.1	CIRCULATION	HM	EP-07B	4'-0"	7'-0"				27	1	HM	EP-07B	J2	H2	S2		
136.1	CONTROL ROOM	HM	EP-07B	3'-0"	7'-0"				16	1	HM	EP-07B	J3	H3	S2		
136.2	CONTROL ROOM	HM	EP-07B	3'-0"	7'-0"				16	1	HM	EP-07B	J3	H3	S2		
138.1	CIRCULATION	HM	EP-07B	4'-0"	7'-0"				27	1	HM	EP-07B	J2	H2	S2		
139.1	RANGE CLEANING ROOM	F2	HM	EP-07B	6'-0"	7'-0"			11	2	HM	EP-07B	J5	H5	S5		
140.1	TARGET STORAGE	F2	HM	EP-07B	6'-0"	7'-0"			11	2	HM	EP-07B	J5	H5	S5		
141.1	TARGET STORAGE	F2	HM	EP-07B	6'-0"	7'-0"			11	2	HM	EP-07B	J5	H5	S5		
146.1	SUPPLY	F2	HM	EP-07B	6'-0"	7'-0"			11	2	HM	EP-07B	J2	H2	S2		
147.1	CIRCULATION	HM	EP-07B	4'-0"	7'-0"				11	2	HM	EP-07B	J2	H2	S2		
T101.2	CIRCULATION	HM	EP-07B	6'-0"	7'-0"				40	2	HM	EP-07B	J2	H2	S2		
T101.3	CIRCULATION	HM	EP-07B	6'-0"	7'-0"				40	2	HM	EP-07B	J2	H2	S2		
T102.2	STAIRCASE	F	HM	EP-07B	3'-0"	7'-0"			31	1	HM	EP-07B	J2	H2	S2		
T103.1	ELEVATOR	F	HM	EP-07B	3'-0"	7'-0"			31	1	HM	EP-07B	J2	H2	S2		
T104.1	STOR.	F	HM	EP-07B	3'-0"	7'-0"			20	1	HM	EP-07B	J2	H2	S2		
T105.1	ROOM 3	F	HM	EP-07B	3'-0"	7'-0"			28	1	HM	EP-07B	J2	H2	S2		
T106.1	ROOM 2	F	HM	EP-07B	3'-0"	7'-0"			28	1	HM	EP-07B	J2	H2	S2		
T107.1	ROOM 1	F	HM	EP-07B	3'-0"	7'-0"			28	1	HM	EP-07B	J2	H2	S2		
T108.1	STOR.	F	HM	EP-07B	3'-0"	7'-0"			28	1	HM	EP-07B	J2	H2	S2		
T111.1	ROOM 4	F	HM	EP-07B	3'-0"	7'-0"			29	1	HM	EP-07B	J2	H2	S2		
T111.2	ROOM 4	F	HM	EP-07B	3'-0"	7'-0"			29	1	HM	EP-07B	J2	H2	S2		
T111.3	ROOM 4	F	HM	EP-07B	3'-0"	7'-0"			29	1	HM	EP-07B	J2	H2	S2		
T112.1	STOR.	F	HM	EP-07B	3'-0"	7'-0"			30	1	HM	EP-07B	J2	H2	S2		
T113.1	ROOM 5	F	HM	EP-07B	3'-0"	7'-0"			29	1	HM	EP-07B	J2	H2	S2		
T113.2	ROOM 5	F	HM	EP-07B	3'-0"	7'-0"			29	1	HM	EP-07B	J2	H2	S2		
T114.1	STOR.	F	HM	EP-07B	3'-0"	7'-0"			29	1	HM	EP-07B	J2	H2	S2		
T115.1	ROOM 6	F	HM	EP-07B	3'-0"	7'-0"			29	1	HM	EP-07B	J2	H2	S2		
T115.2	ROOM 6	F	HM	EP-07B	3'-0"	7'-0"			29	1	HM	EP-07B	J2	H2	S2		
T115.3	ROOM 6	F	HM	EP-07B	3'-0"	7'-0"			29	1	HM	EP-07B	J2	H2	S2		
T116.1	ROOM 7	F	HM	EP-07B	3'-0"	7'-0"			29	1	HM	EP-07B	J2	H2	S2		
T116.3	ROOM 7	F	HM	EP-07B	3'-0"	7'-0"			29	1	HM	EP-07B	J2	H2	S2		
T117.1	ROOM 8	F	HM	EP-07B	3'-0"	7'-0"			29	1	HM	EP-07B	J2	H2	S2		
T118.2	ROOM 9	F	HM	EP-07B	3'-0"	7'-0"			31	1	HM	EP-07B	J2	H2	S2		
T118.3	ROOM 9	F	HM	EP-07B	3'-0"	7'-0"			29	1	HM	EP-07B	J2	H2	S2		
T201.1	CIRCULATION	F	HM	EP-07B	3'-0"	7'-0"			38	1	HM	EP-07B	J2	H2	S2		
T203.1	STAIRCASE	F	HM	EP-07B	3'-0"	7'-0"			38	1	HM	EP-07B	J2	H2	S2		
T204.1	ELEVATOR	F	HM	EP-07B	3'-0"	7'-0"			38	1	HM	EP-07B	J2	H2	S2		
T205.1	ROOM 1	F	HM	EP-07B	3'-0"	7'-0"			29	1	HM	EP-07B	J2	H2	S2		
T205.2	ROOM 1	F	HM	EP-07B	3'-0"	7'-0"			29	1	HM	EP-07B	J2	H2	S2		
T206.1	STOR.	F	HM	EP-07B	3'-0"	7'-0"			30	1	HM	EP-07B	J2	H2	S2		
T207.1	ROOM 2	F	HM	EP-07B	3'-0"	7'-0"			29	1	HM	EP-07B	J2	H2	S2		
T207.2	ROOM 2	F	HM	EP-07B	3'-0"	7'-0"			29	1	HM	EP-07B	J2	H2	S2		
T208.1	ROOM 3	F	HM	EP-07B	3'-0"	7'-0"			29	1	HM	EP-07B	J2	H2	S2		
T208.2	ROOM 3	F	HM	EP-07B	3'-0"	7'-0"			29	1	HM	EP-07B	J2	H2	S2		
T209.1	ROOM 4	F	HM	EP-07B	3'-0"	7'-0"			29	1	HM	EP-07B	J2	H2	S2		
T210.1	ROOM 5	F	HM	EP-07B	3'-0"	7'-0"			29	1	HM	EP-07B	J2	H2	S2		
T210.2	ROOM 5	F	HM	EP-07B	3'-0"	7'-0"			29	1	HM	EP-07B	J2	H2			



RECORD REVISIONS		
NUMBER	DESCRIPTION	DATE
1	ADDENDUM 3	10/2/2024

CLIENT:
NEBRASKA DEPARTMENT OF ADMINISTRATIVE SERVICES

PROJECT:
NEBRASKA LAW ENFORCEMENT TRAINING CENTER EXPANSION

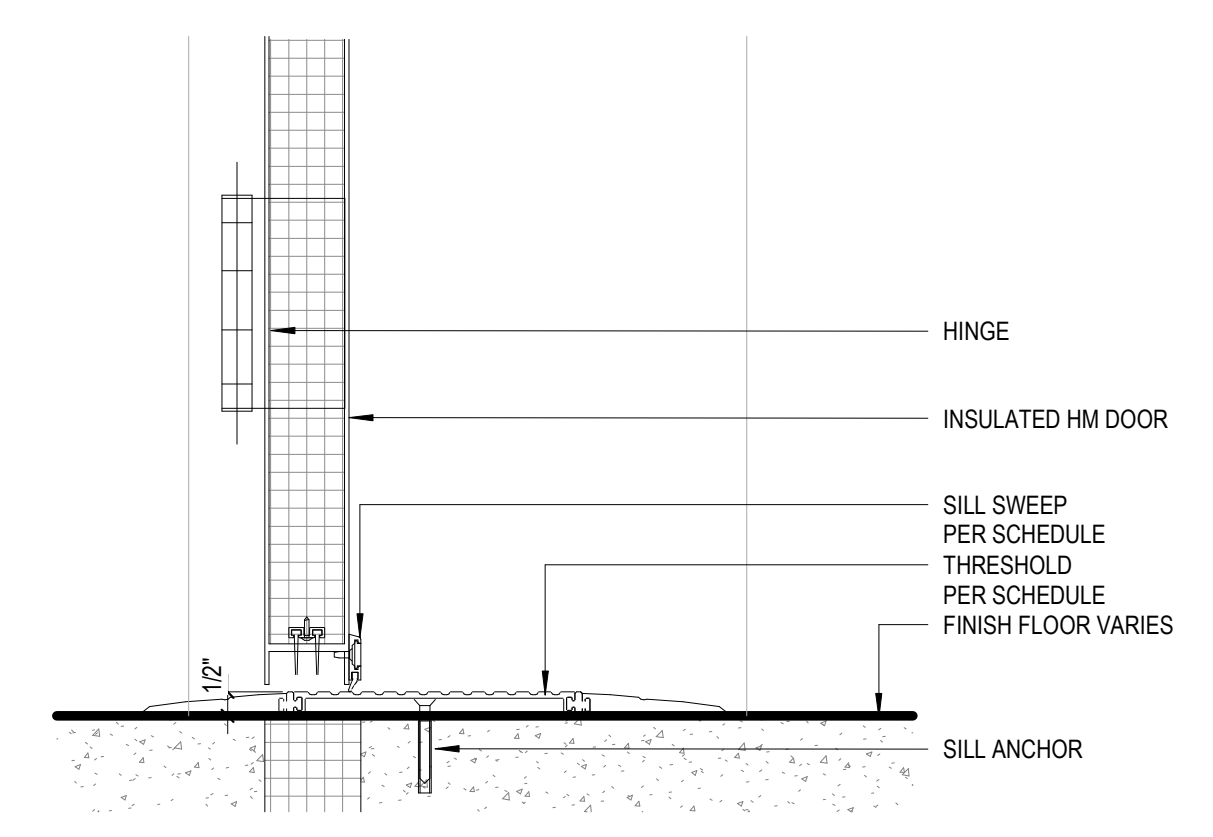
ADDRESS:
3600 N ACADEMY ROAD,
GRAND ISLAND, NE 68801

SEAL & SIGNATURE:

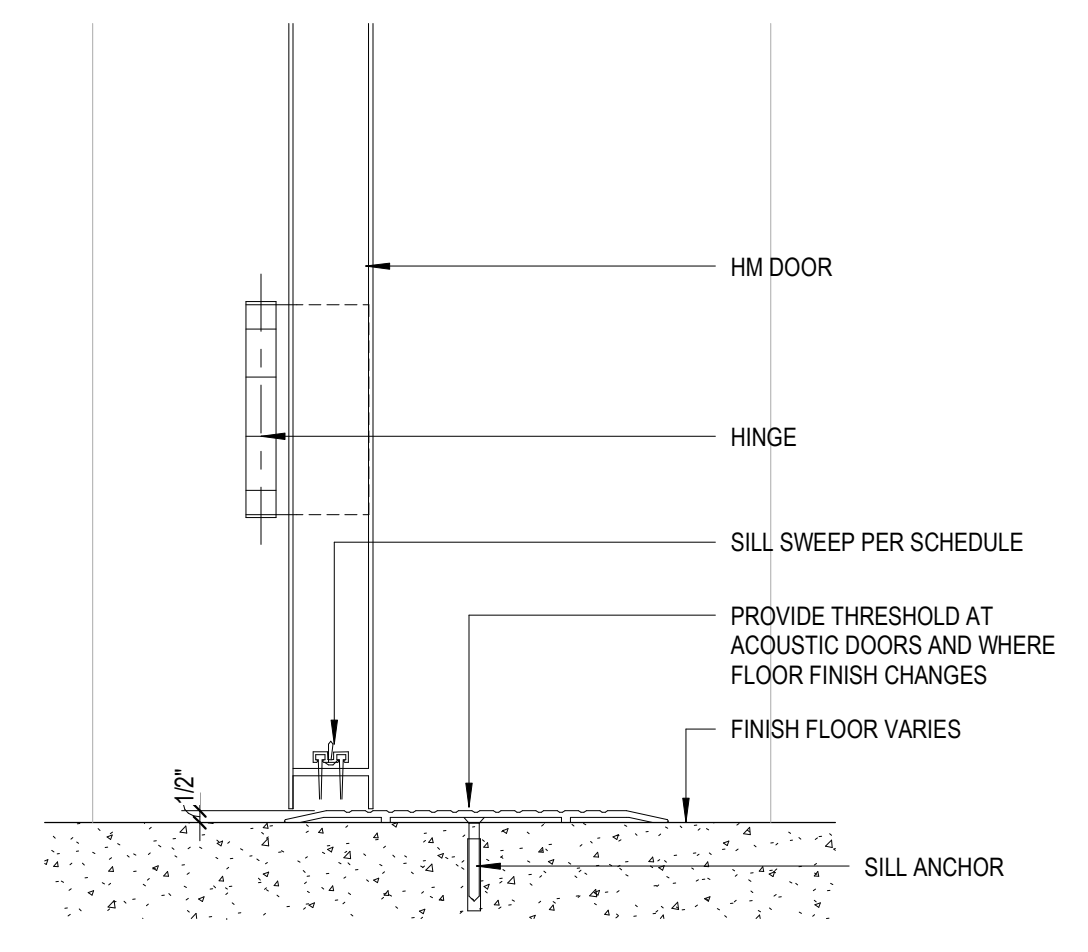
DRAWING TITLE:
DOOR DETAILS

PROJECT NO. 50163918
DATE: 08/21/24
PHASE: ISSUED FOR CONSTRUCTION
DRAWN BY: TDN CHECKED BY: ME
DRAWING NUMBER:

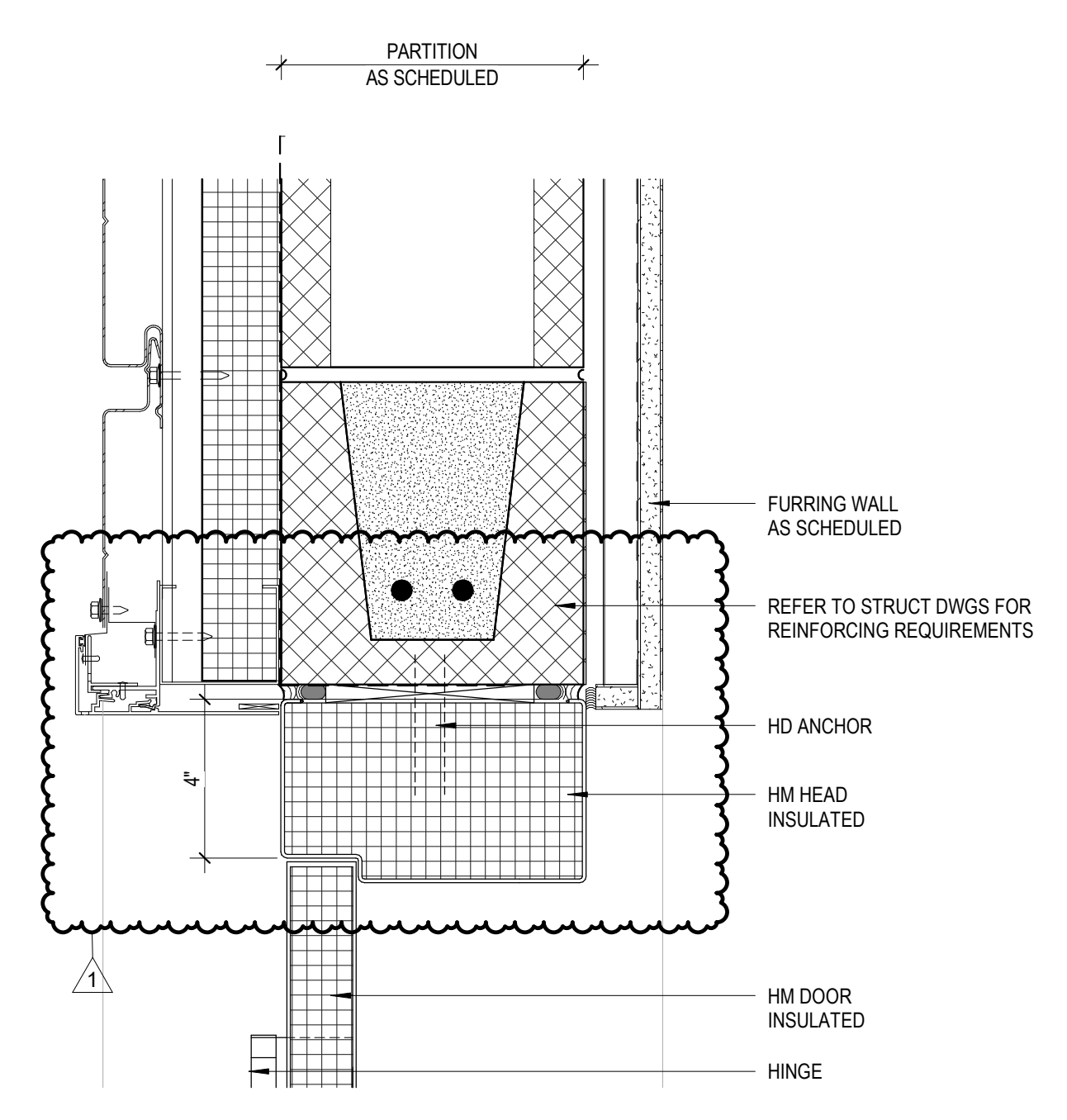
FR-A-611



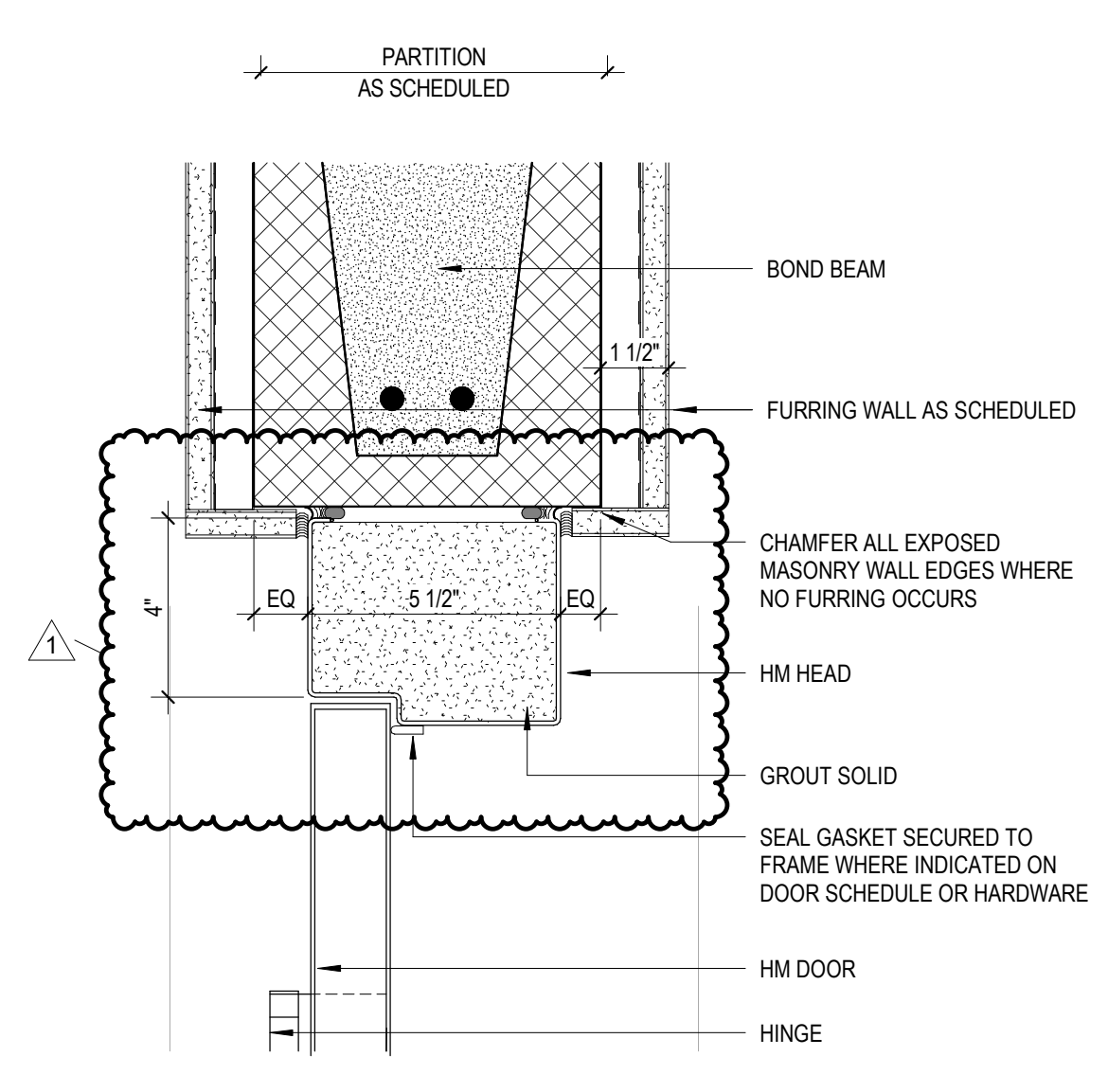
1 | S1 - MASONRY EXTERIOR SILL
SCALE: 3" = 1'-0"



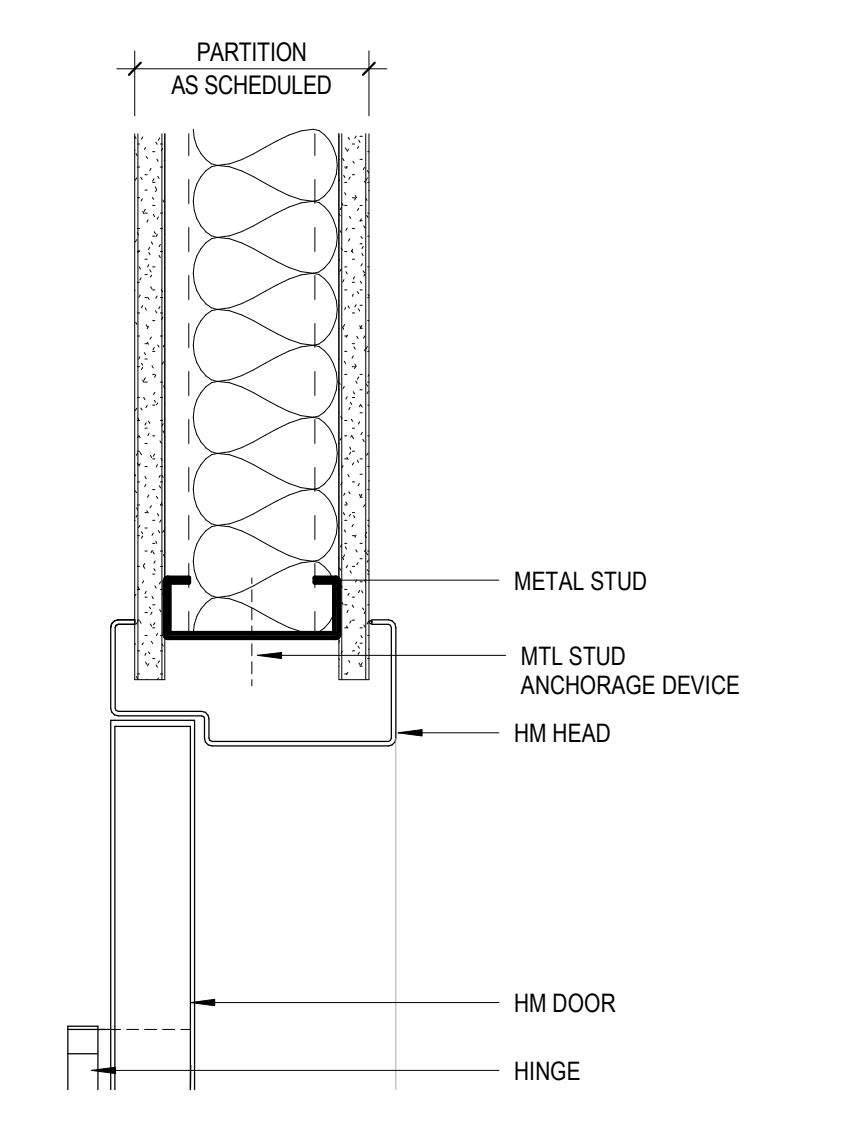
2 | S2 - MASONRY/STUD INTERIOR SILL
SCALE: 3" = 1'-0"



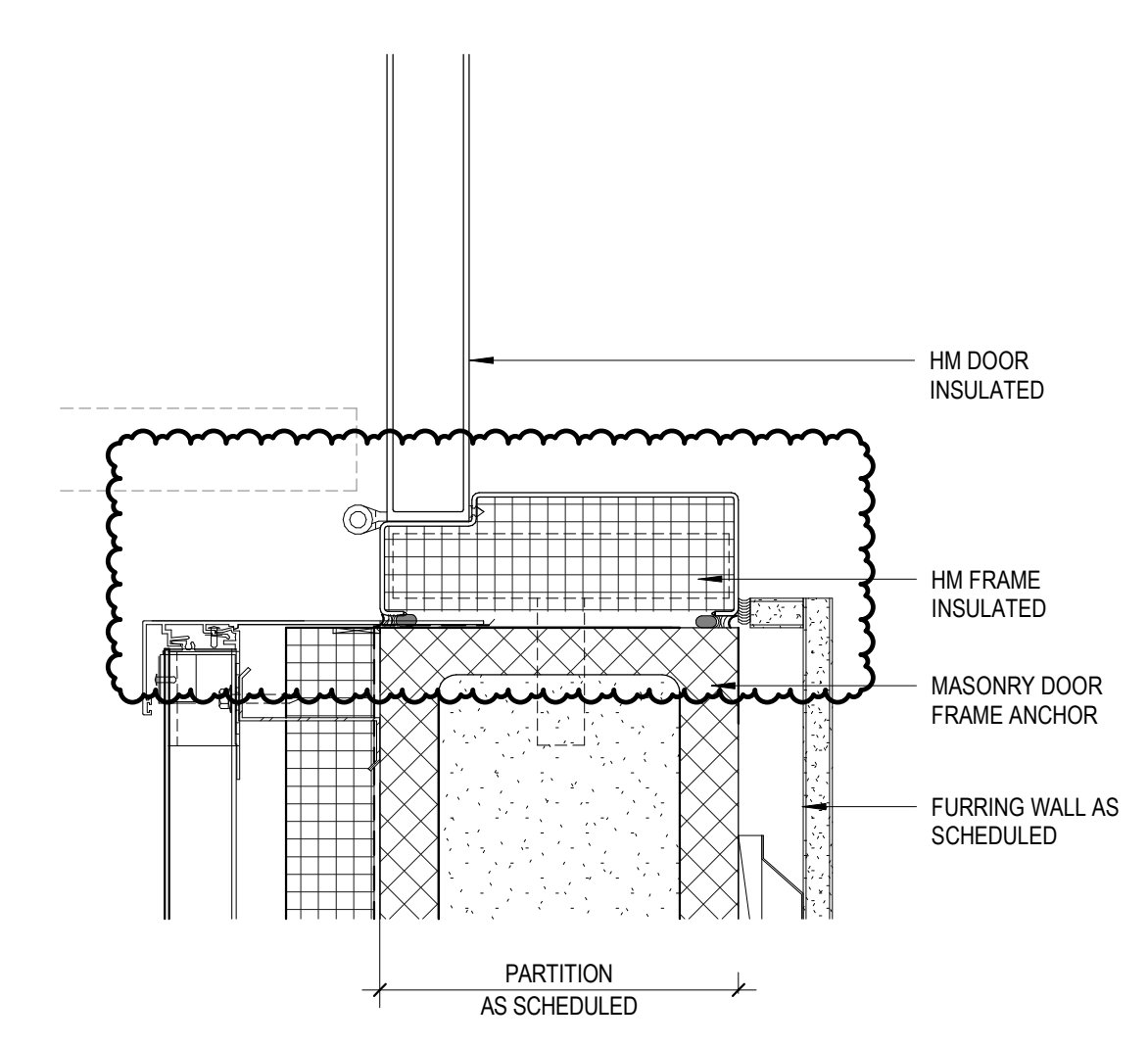
3 | H1 - MASONRY EXTERIOR HEAD 8" CMU / GYP BD
SCALE: 3" = 1'-0"



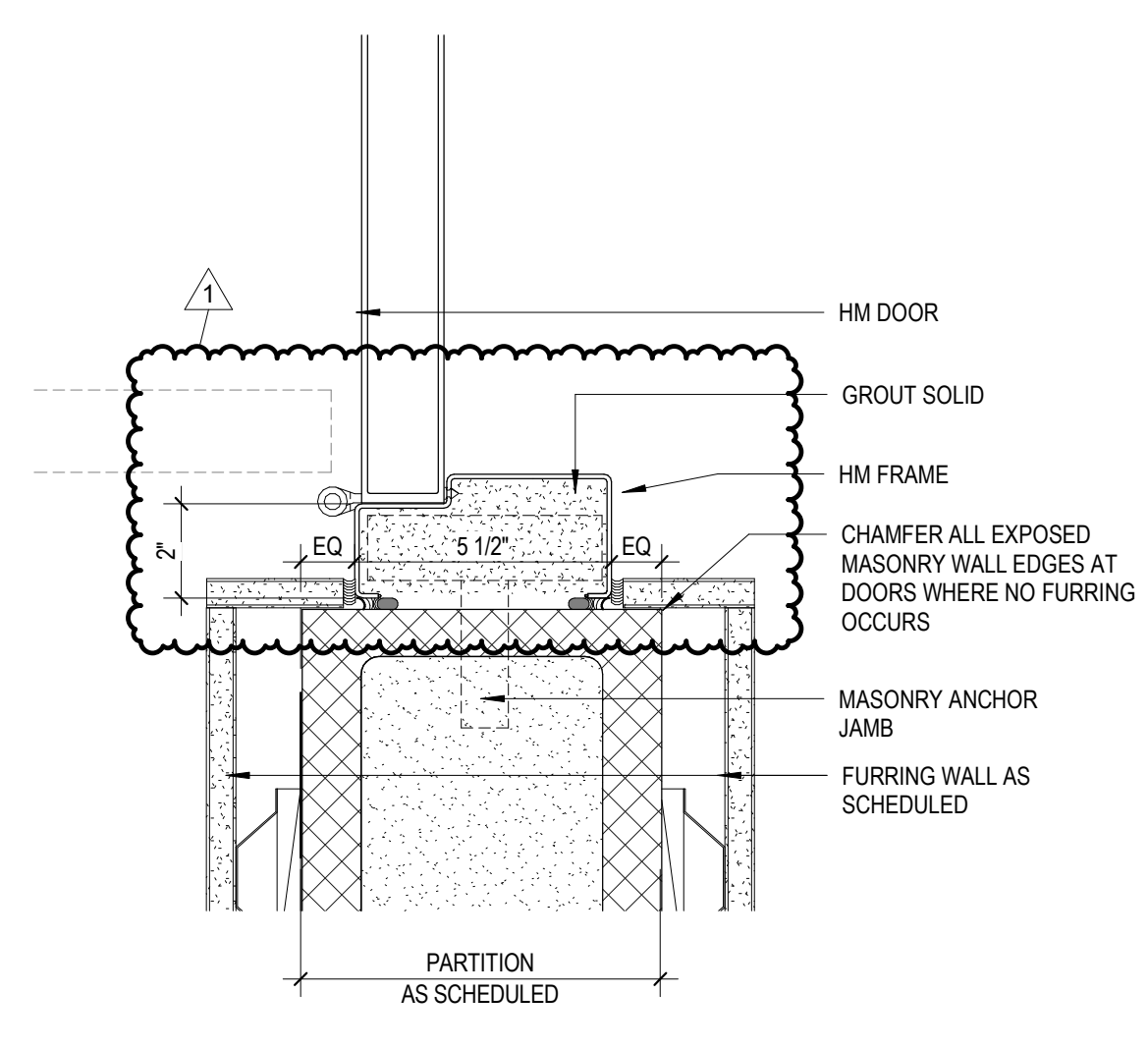
4 | H2 - MASONRY INTERIOR HEAD
SCALE: 3" = 1'-0"



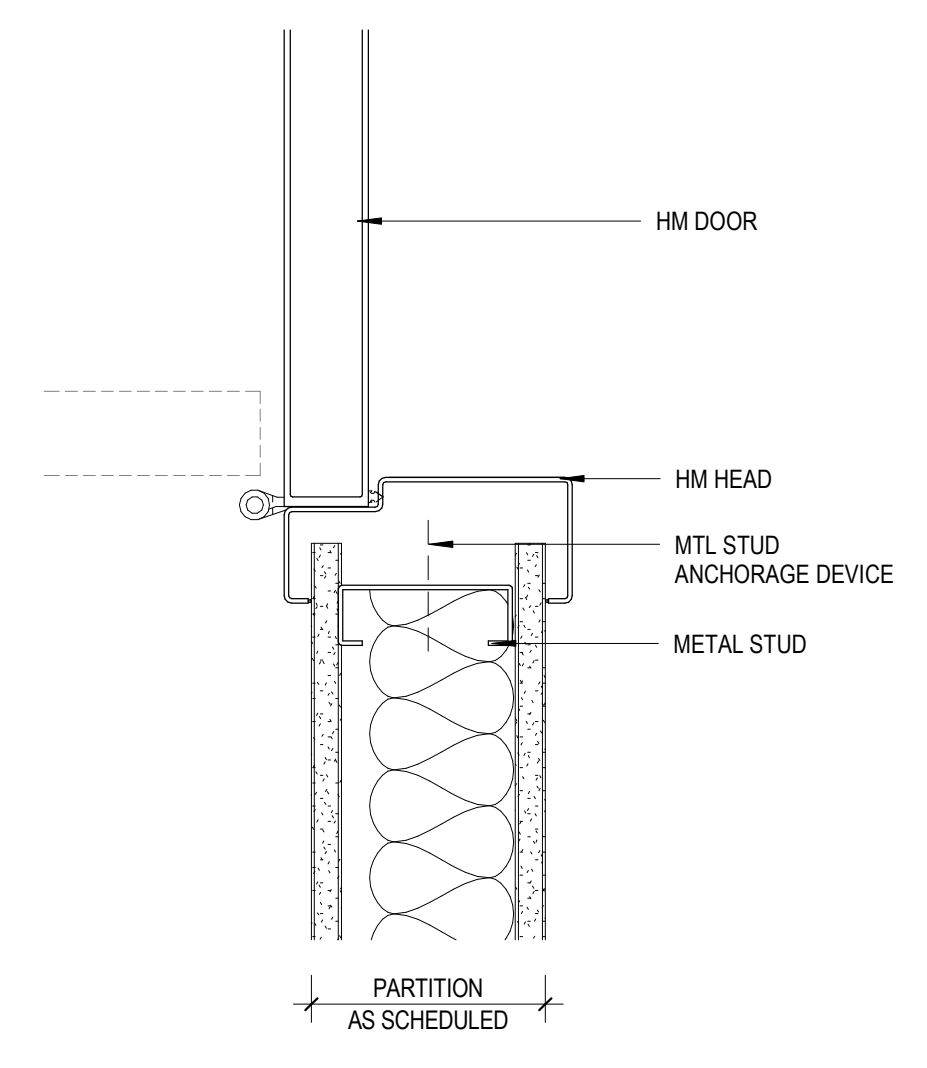
5 | H3 - STUD WALL HEAD
SCALE: 3" = 1'-0"



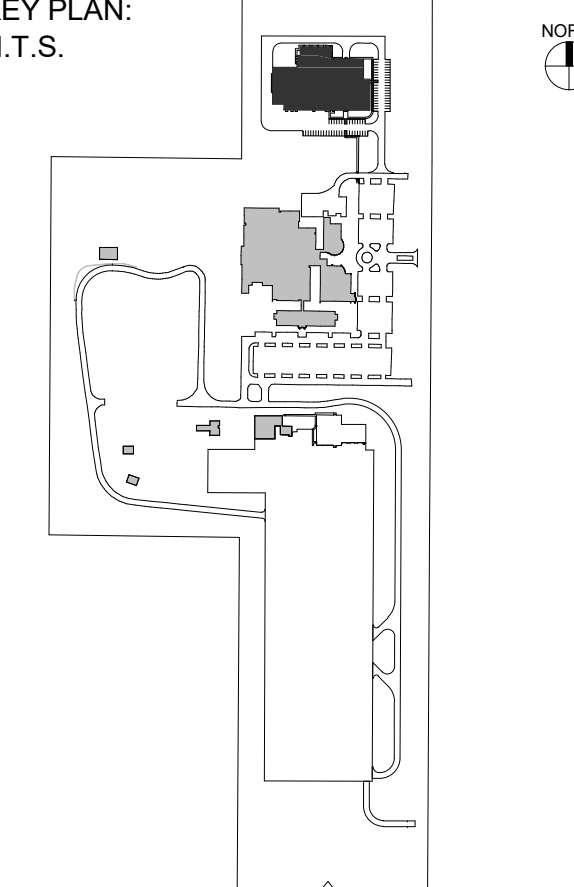
6 | J1 - MASONRY EXTERIOR
SCALE: 3" = 1'-0"



7 | J2 - MASONRY INTERIOR JAMB
SCALE: 3" = 1'-0"



8 | J3 - STUD WALL JAMB
SCALE: 3" = 1'-0"



NUMBER	DESCRIPTION	DATE
1	ADDENDUM 3	10/2/2024

NEBRASKA DEPARTMENT
OF ADMINISTRATIVE
SERVICES

NEBRASKA LAW
ENFORCEMENT
TRAINING CENTER
EXPANSION

3600 N ACADEMY ROAD,
GRAND ISLAND, NE 68801

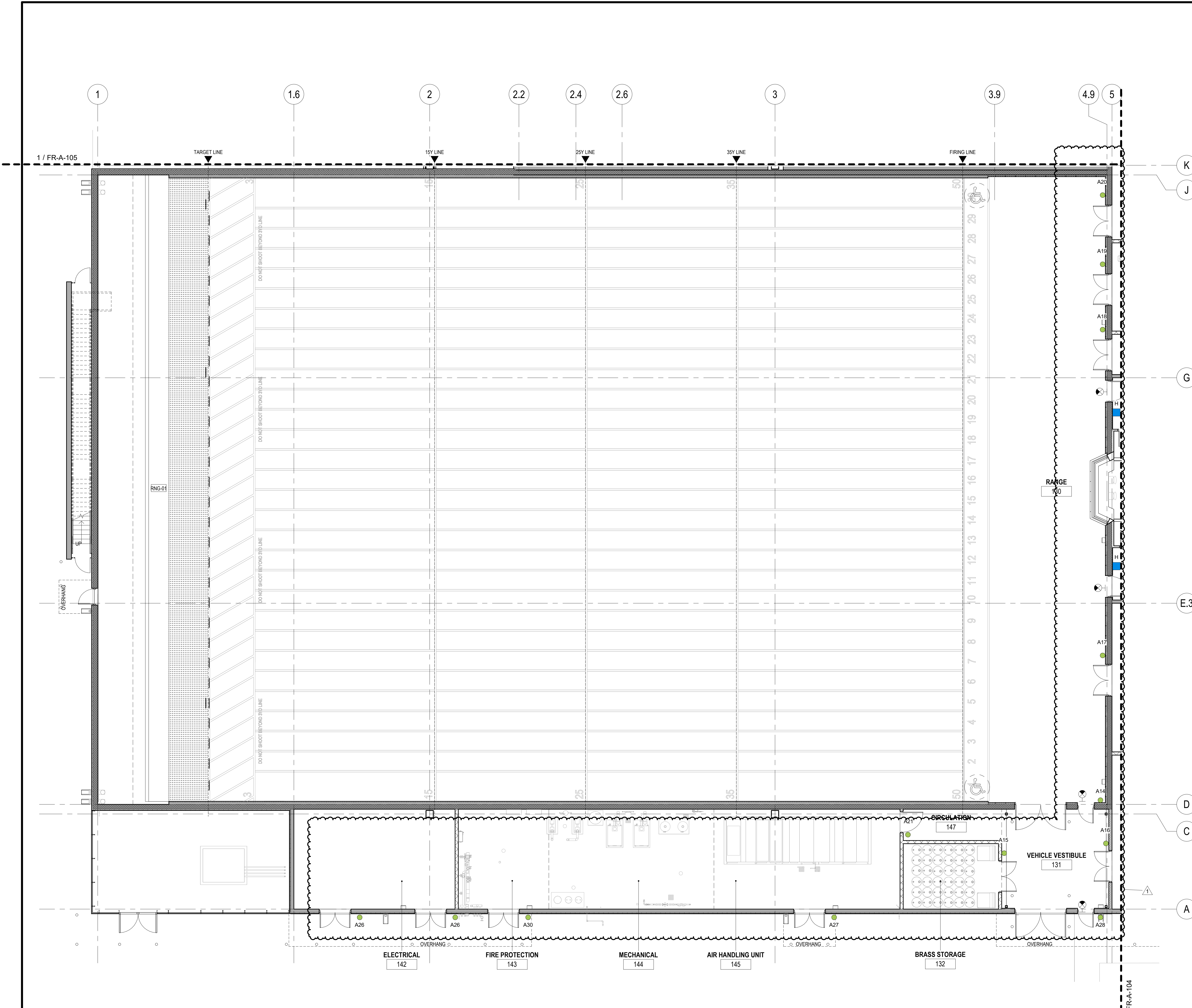
1ST FLOOR PLAN
SIGNAGE - PART A

SIGN LEGEND

- ROOM SIGN
- WALL TEXT/SYMBOL
- RANGE IN USE SIGN
- ⊗ EXIT SIGN - FOR COORDINATION ONLY

SIGN SCHEDULE

MARK	SIGN TYPE	SIGN	ROOM #	SIGNAGE TEXT	QTY	COMMENTS
A1	A	ROOM IDENTIFICATION	103	CLASSROOM	2	
A2	A	ROOM IDENTIFICATION	104	CLASSROOM	2	
A3	A	ROOM IDENTIFICATION	105	STORAGE	1	
A4	A	ROOM IDENTIFICATION	106	STORAGE	1	
A5	A	ROOM IDENTIFICATION	109	OFFICES	2	
A6	A	ROOM IDENTIFICATION	110	CONFERENCE ROOM	1	
A7	A	ROOM IDENTIFICATION	121	WEAPONS CLEANING ROOM	1	
A8	A	ROOM IDENTIFICATION	121	WEAPONS CLEANING	1	
A9	A	ROOM IDENTIFICATION	122	WEAPONS CLEANING CLOSET	1	
A10	A	ROOM IDENTIFICATION	146	SUPPLY	1	
A11	A	ROOM IDENTIFICATION	124	JANITOR'S CLOSET	2	
A12	A	ROOM IDENTIFICATION	126	MDF	1	
A13	A	ROOM IDENTIFICATION	127	WEAPONS VAULT	1	
A14	A	ROOM IDENTIFICATION	131	VEHICLE VESTIBULE	1	
A15	A	ROOM IDENTIFICATION	132	BRASS STORAGE	1	
A16	A	ROOM IDENTIFICATION	133	AMMUNITION STORAGE	1	
A17	A	ROOM IDENTIFICATION	134	TARGET STORAGE	1	
A18	A	ROOM IDENTIFICATION	139	RANGE CLEANING ROOM	1	
A19	A	ROOM IDENTIFICATION	140	TARGET STORAGE	1	
A20	A	ROOM IDENTIFICATION	141	TARGET STORAGE	1	
A21	A	ROOM IDENTIFICATION	147	AIR HANDLING UNIT	1	
A22	A	ROOM IDENTIFICATION	T104	STORAGE	1	
A23	A	ROOM IDENTIFICATION	T101	TAC HOUSE	1	
A24	A	ROOM IDENTIFICATION	T108	STORAGE	1	
A25	A	ROOM IDENTIFICATION	T206	STORAGE	1	
A26	A	ROOM IDENTIFICATION	142	ELECTRICAL ROOM	2	EXTERIOR SIGN
A27	A	ROOM IDENTIFICATION	145	MECHANICAL ROOM	1	EXTERIOR SIGN
A28	A	ROOM IDENTIFICATION	131	VEHICLE VESTIBULE	1	EXTERIOR SIGN
A29	A	ROOM IDENTIFICATION	133	AMMUNITION STORAGE	1	EXTERIOR SIGN
A30	A	ROOM IDENTIFICATION	143	FIRE PROTECTION	1	EXTERIOR SIGN
A31	A	ROOM IDENTIFICATION	T109	MECHANICAL	1	EXTERIOR SIGN
A32	A	ROOM IDENTIFICATION	T101	TAC HOUSE	1	EXTERIOR SIGN
A33	A	ROOM IDENTIFICATION	T202	TAC HOUSE	1	EXTERIOR SIGN
A34	A	ROOM IDENTIFICATION	T304	STORAGE	1	EXTERIOR SIGN
A35	A	ROOM IDENTIFICATION	T301	TAC HOUSE	1	EXTERIOR SIGN
A36	A	ROOM IDENTIFICATION		SHAFT	3	
A37	A	ROOM IDENTIFICATION	135	AIRLOCK	1	
A38	A	ROOM IDENTIFICATION	138	AIRLOCK	1	
A39	A	ROOM IDENTIFICATION	136	RANGE	2	
A40	A	ROOM IDENTIFICATION	136	CONTROL ROOM	2	
B	B	WOMEN'S RESTROOM		WOMEN	2	
C	C	MEN'S RESTROOM		MEN	2	
D	D	ROOM IDENTIFICATION		CHANGING ROOM	1	
E1	E	ROOM IDENTIFICATION	111		1	
E2	E	ROOM IDENTIFICATION	112		1	
E3	E	ROOM IDENTIFICATION	113		1	
E4	E	ROOM IDENTIFICATION	114		1	
E5	E	ROOM IDENTIFICATION	115		1	
E6	E	ROOM IDENTIFICATION	116		1	
F1	F	FLOOR INFORMATION	01 FLOOR		3	
F2	F	FLOOR INFORMATION	02 FLOOR		3	
F3	F	FLOOR INFORMATION	03 FLOOR		1	
G1	G	STAIR IDENTIFICATION		STAIR A	3	
G3	G	STAIR IDENTIFICATION		STAIR C	1	
G3	G	STAIR IDENTIFICATION		STAIR C	2	EXTERIOR SIGN
G4	G	STAIR IDENTIFICATION		STAIR A	1	EXTERIOR SIGN
G6	G	STAIR IDENTIFICATION		STAIR C	1	
H	H	CUSTOM LIGHTBOX		RANGE IN USE	2	LIT SIGN
I1	I	VINYL GRAPHIC		RANGE	4	
I2	I	VINYL GRAPHIC		CONTROL ROOM	2	
J1	J	ROOM IDENTIFICATION		WOMEN DIRECTIONAL	1	
J2	J	ROOM IDENTIFICATION		MEN DIRECTIONAL	1	
K1	K	ROOM IDENTIFICATION	T105		1	
K2	K	ROOM IDENTIFICATION	T106		1	
K3	K	ROOM IDENTIFICATION	T107		1	
K4	K	ROOM IDENTIFICATION	T111		4	
K5	K	ROOM IDENTIFICATION	T112		1	
K6	K	ROOM IDENTIFICATION	T115		3	
K7	K	ROOM IDENTIFICATION	T116		3	
K8	K	ROOM IDENTIFICATION	T117		2	
K9	K	ROOM IDENTIFICATION	T118		3	
K10	K	ROOM IDENTIFICATION	T205		2	
K11	K	ROOM IDENTIFICATION	T207		3	
K12	K	ROOM IDENTIFICATION	T208		3	
K13	K	ROOM IDENTIFICATION	T209		2	
K14	K	ROOM IDENTIFICATION	T210		2	
K15	K	ROOM IDENTIFICATION	T211		3	
K16	K	ROOM IDENTIFICATION	T213		3	
K17	K	ROOM IDENTIFICATION	T214		3	
K18	K	ROOM IDENTIFICATION	T215		2	
K19	K	ROOM IDENTIFICATION	T216		2	
K20	K	ROOM IDENTIFICATION	T217		3	
K21	K	ROOM IDENTIFICATION	T219		2	
K22	K	ROOM IDENTIFICATION	T220		2	
K23	K	ROOM IDENTIFICATION	T221		1	
K24	K	ROOM IDENTIFICATION	T113		2	
K25	K	ROOM IDENTIFICATION	T218		2	



1 1ST FLOOR PLAN SIGNAGE - PART A
SCALE: 1/8" = 1'-0"



SIGN LEGEND

- ROOM SIGN
- WALL TEXT/SYMBOL
- ▭ RANGE IN USE SIGN
- ⊗ EXIT SIGN - FOR COORDINATION ONLY

COORDINATING ARCHITECT
ARCHITECT OF RECORD - EVOC BUILDING

Dewberry

DEWBERRY ARCHITECTS, INC.
132 North York St #2C,
Evanston, IL 60126-3070
P. 847-695-6840

DESIGN ARCHITECT & MASTERPLANNER
ARCHITECT OF RECORD - FIREARMS BLDG.

TACTICAL DESIGN NORTH

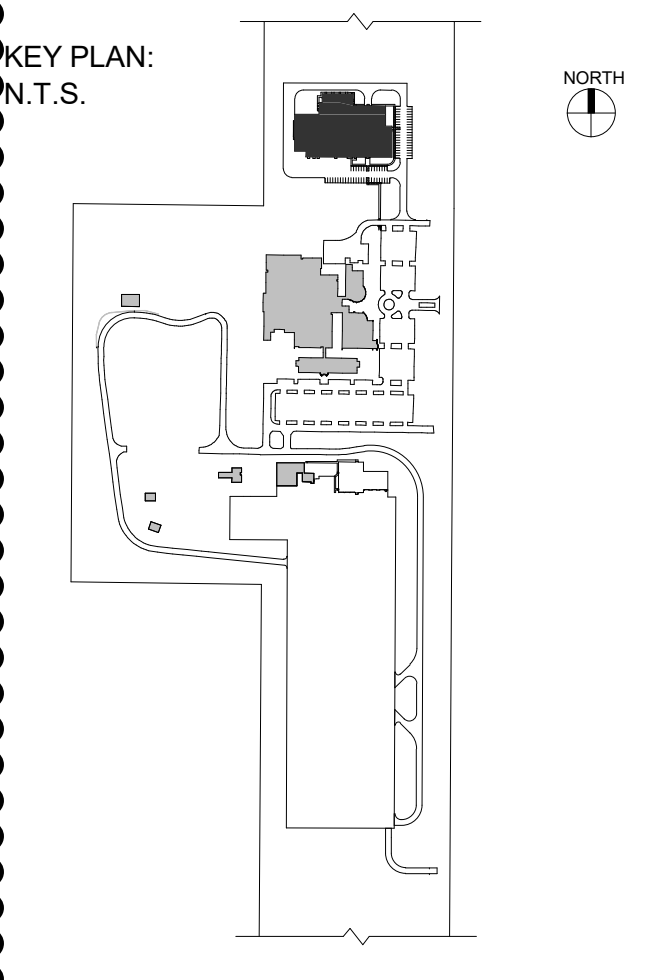
TACTICAL DESIGN NORTH, INC.
231 E. Buffalo St #602,
Milwaukee, WI 53202
P. 414-909-8586

ENGINEERS OF RECORD:

HDR

HDR ARCHITECTURE, INC.
1917 South 67th St,
Omaha, NE 68106
P. 402-393-1000

AREA OF PROJECT
FIREARMS RANGE BUILDING



RECORD REVISIONS

NUMBER	DESCRIPTION	DATE
1	ADDENDUM 3	10/22/2024

CLIENT:
NEBRASKA DEPARTMENT OF ADMINISTRATIVE SERVICES

PROJECT:
NEBRASKA LAW ENFORCEMENT TRAINING CENTER EXPANSION

ADDRESS:
3600 N ACADEMY ROAD,
GRAND ISLAND, NE 68801

SEAL & SIGNATURE:

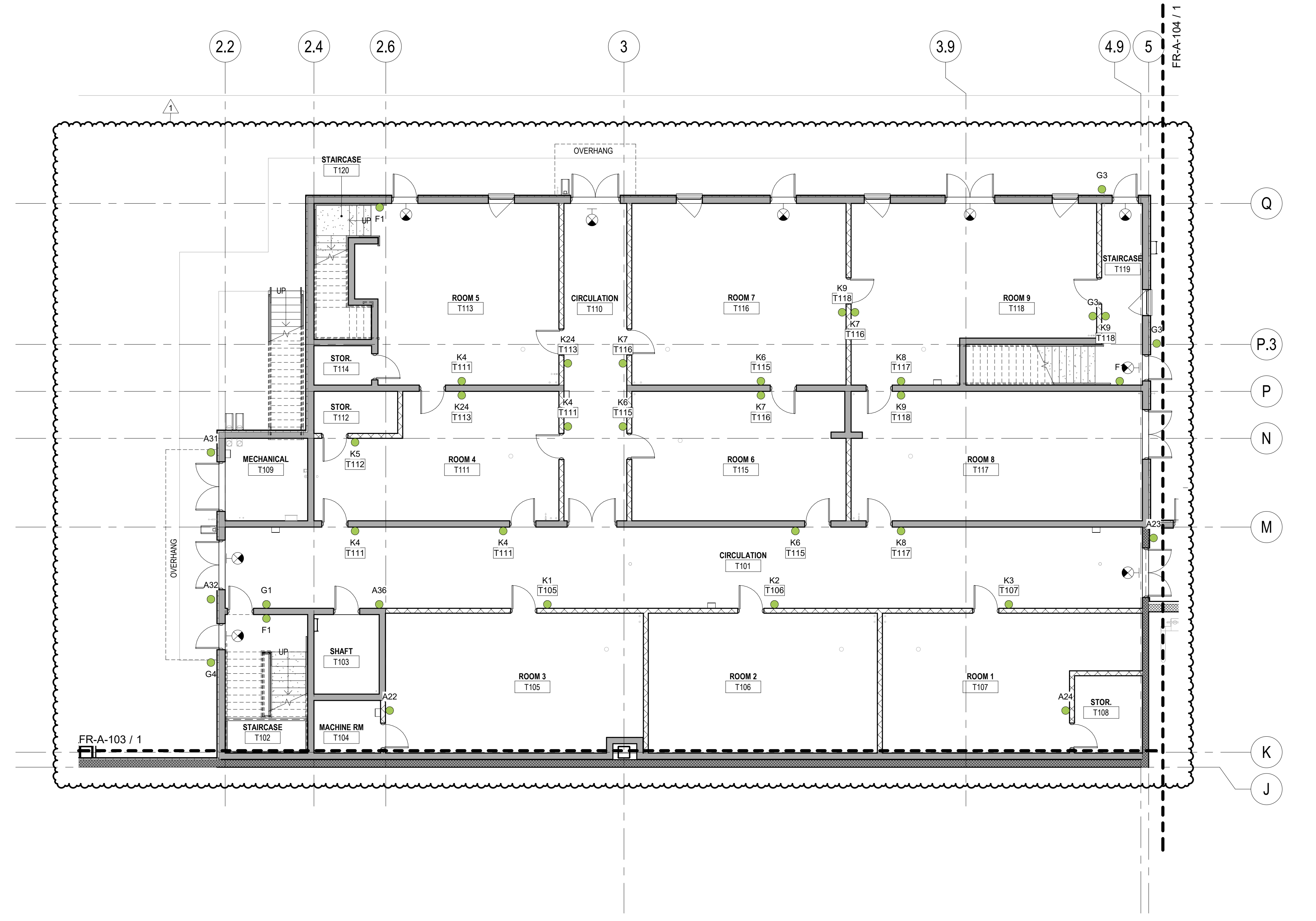
DRAWING TITLE:
1ST FLOOR PLAN SIGNAGE - PART C

PROJECT NO. 50163918
DATE: 08/01/24
PHASE: ISSUED FOR CONSTRUCTION
DRAWN BY: TDN | CHECKED BY: ME
DRAWING NUMBER:

FR-A-802

SIGN SCHEDULE

MARK	SIGN TYPE	SIGN	ROOM #	SIGNAGE TEXT	QTY	COMMENTS
A1	A	ROOM IDENTIFICATION	103	CLASSROOM	2	
A2	A	ROOM IDENTIFICATION	104	CLASSROOM	2	
A3	A	ROOM IDENTIFICATION	105	STORAGE	1	
A4	A	ROOM IDENTIFICATION	106	STORAGE	1	
A5	A	ROOM IDENTIFICATION	109	OFFICES	2	
A6	A	ROOM IDENTIFICATION	110	CONFERENCE ROOM	1	
A7	A	ROOM IDENTIFICATION	121	WEAPONS CLEANING ROOM	1	
A8	A	ROOM IDENTIFICATION	122	WEAPONS CLEANING CLOSET	1	
A9	A	ROOM IDENTIFICATION	121	WEAPONS CLEANING ROOM	1	
A10	A	ROOM IDENTIFICATION	146	SUPPLY	1	
A11	A	ROOM IDENTIFICATION	124	JANITOR'S CLOSET	2	
A12	A	ROOM IDENTIFICATION	126	MDF	1	
A13	A	ROOM IDENTIFICATION	127	WEAPONS VAULT	1	
A14	A	ROOM IDENTIFICATION	131	VEHICLE VESTIBULE	1	
A15	A	ROOM IDENTIFICATION	132	BRASS STORAGE	1	
A16	A	ROOM IDENTIFICATION	133	AMMUNITION STORAGE	1	
A17	A	ROOM IDENTIFICATION	134	TARGET STORAGE	1	
A18	A	ROOM IDENTIFICATION	139	RANGE CLEANING ROOM	1	
A19	A	ROOM IDENTIFICATION	140	TARGET STORAGE	1	
A20	A	ROOM IDENTIFICATION	141	TARGET STORAGE	1	
A21	A	ROOM IDENTIFICATION	147	AIR HANDLING UNIT	1	
A22	A	ROOM IDENTIFICATION	T104	STORAGE	1	
A23	A	ROOM IDENTIFICATION	T101	TAC HOUSE	1	
A24	A	ROOM IDENTIFICATION	T108	STORAGE	1	
A25	A	ROOM IDENTIFICATION	T206	STORAGE	1	
A26	A	ROOM IDENTIFICATION	142	ELECTRICAL ROOM	2	EXTERIOR SIGN
A27	A	ROOM IDENTIFICATION	145	MECHANICAL ROOM	1	EXTERIOR SIGN
A28	A	ROOM IDENTIFICATION	131	VEHICLE VESTIBULE	1	EXTERIOR SIGN
A29	A	ROOM IDENTIFICATION	133	AMMUNITION STORAGE	1	EXTERIOR SIGN
A30	A	ROOM IDENTIFICATION	143	FIRE PROTECTION	1	EXTERIOR SIGN
A31	A	ROOM IDENTIFICATION	T109	MECHANICAL	1	EXTERIOR SIGN
A32	A	ROOM IDENTIFICATION	T101	TAC HOUSE	1	EXTERIOR SIGN
A33	A	ROOM IDENTIFICATION	T202	TAC HOUSE	1	EXTERIOR SIGN
A34	A	ROOM IDENTIFICATION	T304	STORAGE	1	EXTERIOR SIGN
A35	A	ROOM IDENTIFICATION	T301	TAC HOUSE	1	EXTERIOR SIGN
A36	A	ROOM IDENTIFICATION		SHAFT	3	
A37	A	ROOM IDENTIFICATION	135	AIRLOCK	1	
A38	A	ROOM IDENTIFICATION	138	AIRLOCK	1	
A39	A	ROOM IDENTIFICATION	136	RANGE	2	
A40	A	ROOM IDENTIFICATION	136	CONTROL ROOM	2	
B	B	WOMEN'S RESTROOM		WOMEN	2	
C	C	MEN'S RESTROOM		MEN	2	
D	D	ROOM IDENTIFICATION		CHANGING ROOM	1	
E1	E	ROOM IDENTIFICATION	111		1	
E2	E	ROOM IDENTIFICATION	112		1	
E3	E	ROOM IDENTIFICATION	113		1	
E4	E	ROOM IDENTIFICATION	114		1	
E5	E	ROOM IDENTIFICATION	115		1	
E6	E	ROOM IDENTIFICATION	116		1	
F1	F	FLOOR INFORMATION	01 FLOOR		3	
F2	F	FLOOR INFORMATION	02 FLOOR		3	
F3	F	FLOOR INFORMATION	03 FLOOR		1	
G1	G	STAIR IDENTIFICATION		STAIR A	3	
G3	G	STAIR IDENTIFICATION		STAIR C	1	
G4	G	STAIR IDENTIFICATION		STAIR A	2	EXTERIOR SIGN
G6	G	STAIR IDENTIFICATION		STAIR A	1	EXTERIOR SIGN
H	H	CUSTOM LIGHTBOX		RANGE IN USE	2	LIT SIGN
I1	I	VINYL GRAPHIC		RANGE	4	
I2	I	VINYL GRAPHIC		CONTROL ROOM	2	
J1	J	ROOM IDENTIFICATION		WOMEN DIRECTIONAL	1	
J2	J	ROOM IDENTIFICATION		MEN DIRECTIONAL	1	
K1	K	ROOM IDENTIFICATION	T105		1	
K2	K	ROOM IDENTIFICATION	T106		1	
K3	K	ROOM IDENTIFICATION	T107		1	
K4	K	ROOM IDENTIFICATION	T111		4	
K5	K	ROOM IDENTIFICATION	T112		1	
K6	K	ROOM IDENTIFICATION	T115		3	
K7	K	ROOM IDENTIFICATION	T116		3	
K8	K	ROOM IDENTIFICATION	T117		2	
K9	K	ROOM IDENTIFICATION	T118		3	
K10	K	ROOM IDENTIFICATION	T205		2	
K11	K	ROOM IDENTIFICATION	T207		3	
K12	K	ROOM IDENTIFICATION	T208		3	
K13	K	ROOM IDENTIFICATION	T209		2	
K14	K	ROOM IDENTIFICATION	T210		2	
K15	K	ROOM IDENTIFICATION	T211		3	
K16	K	ROOM IDENTIFICATION	T213		3	
K17	K	ROOM IDENTIFICATION	T214		3	
K18	K	ROOM IDENTIFICATION	T215		2	
K19	K	ROOM IDENTIFICATION	T216		2	
K20	K	ROOM IDENTIFICATION	T217		3	
K21	K	ROOM IDENTIFICATION	T219		2	
K22	K	ROOM IDENTIFICATION	T220		2	
K23	K	ROOM IDENTIFICATION	T221		1	
K24	K	ROOM IDENTIFICATION	T113		2	
K25	K	ROOM IDENTIFICATION	T118		2	



1 1ST FLOOR PLAN SIGNAGE - PART C
SCALE: 1/8" = 1'-0"

SIGN LEGEND

- ROOM SIGN
- WALL TEXT/SYMBOL
- RANGE IN USE SIGN
- ⊗ EXIT SIGN - FOR COORDINATION ONLY

COORDINATING ARCHITECT
ARCHITECT OF RECORD - EVOC BUILDING

Dewberry

DEWBERRY ARCHITECTS, INC.
132 North York St #2C,
Evanston, IL 60126-3070
P. 847-695-6840

DESIGN ARCHITECT & MASTERPLANNER
ARCHITECT OF RECORD - FIREARMS BLDG.

TACTICAL DESIGN NORTH

TACTICAL DESIGN NORTH, INC.
231 E. Buffalo St #602,
Milwaukee, WI 53202
P. 414-909-8586

ENGINEERS OF RECORD:

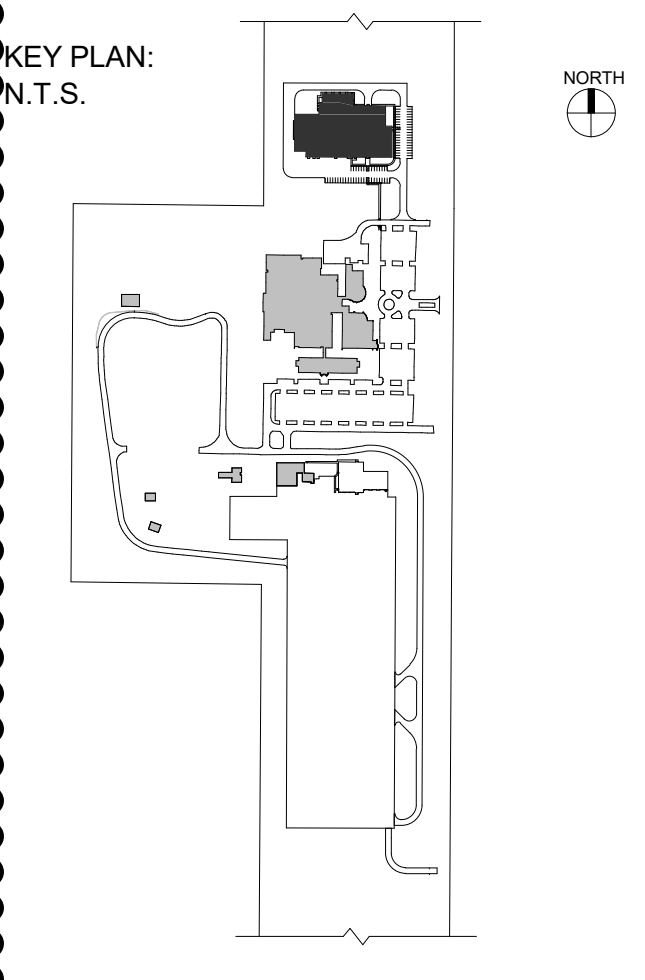
HDR

HDR ARCHITECTURE, INC.
1917 South 67th St,
Omaha, NE 68106
P. 402-393-1000

SIGN SCHEDULE

MARK	SIGN TYPE	SIGN	ROOM #	SIGNAGE TEXT	QTY	COMMENTS
A1	A	ROOM IDENTIFICATION	103	CLASSROOM	2	
A2	A	ROOM IDENTIFICATION	104	CLASSROOM	2	
A3	A	ROOM IDENTIFICATION	105	STORAGE	1	
A4	A	ROOM IDENTIFICATION	106	STORAGE	1	
A5	A	ROOM IDENTIFICATION	109	OFFICES	2	
A6	A	ROOM IDENTIFICATION	110	CONFERENCE ROOM	1	
A7	A	ROOM IDENTIFICATION	121	WEAPONS CLEANING ROOM	1	
A8	A	ROOM IDENTIFICATION	121	WEAPONS CLEANING	1	
A9	A	ROOM IDENTIFICATION	122	WEAPONS CLEANING CLOSET	1	
A10	A	ROOM IDENTIFICATION	146	SUPPLY	1	
A11	A	ROOM IDENTIFICATION	124	JANITOR'S CLOSET	2	
A12	A	ROOM IDENTIFICATION	126	MDF	1	
A13	A	ROOM IDENTIFICATION	127	WEAPONS VAULT	1	
A14	A	ROOM IDENTIFICATION	131	VEHICLE VESTIBULE	1	
A15	A	ROOM IDENTIFICATION	132	BRASS STORAGE	1	
A16	A	ROOM IDENTIFICATION	133	AMMUNITION STORAGE	1	
A17	A	ROOM IDENTIFICATION	134	TARGET STORAGE	1	
A18	A	ROOM IDENTIFICATION	139	RANGE CLEANING ROOM	1	
A19	A	ROOM IDENTIFICATION	140	TARGET STORAGE	1	
A20	A	ROOM IDENTIFICATION	141	TARGET STORAGE	1	
A21	A	ROOM IDENTIFICATION	147	AIR HANDLING UNIT	1	
A22	A	ROOM IDENTIFICATION	1104	STORAGE	1	
A23	A	ROOM IDENTIFICATION	T101	TAC HOUSE	1	
A24	A	ROOM IDENTIFICATION	T106	STORAGE	1	
A25	A	ROOM IDENTIFICATION	T206	STORAGE	1	
A26	A	ROOM IDENTIFICATION	142	ELECTRICAL ROOM	2	EXTERIOR SIGN
A27	A	ROOM IDENTIFICATION	145	MECHANICAL ROOM	1	EXTERIOR SIGN
A28	A	ROOM IDENTIFICATION	131	VEHICLE VESTIBULE	1	EXTERIOR SIGN
A29	A	ROOM IDENTIFICATION	133	AMMUNITION STORAGE	1	EXTERIOR SIGN
A30	A	ROOM IDENTIFICATION	143	FIRE PROTECTION	1	EXTERIOR SIGN
A31	A	ROOM IDENTIFICATION	T109	MECHANICAL	1	EXTERIOR SIGN
A32	A	ROOM IDENTIFICATION	T101	TAC HOUSE	1	EXTERIOR SIGN
A33	A	ROOM IDENTIFICATION	T202	TAC HOUSE	1	EXTERIOR SIGN
A34	A	ROOM IDENTIFICATION	T304	STORAGE	1	EXTERIOR SIGN
A35	A	ROOM IDENTIFICATION	T301	TAC HOUSE	1	EXTERIOR SIGN
A36	A	ROOM IDENTIFICATION		SHAFT	3	
A37	A	ROOM IDENTIFICATION	135	AIRLOCK	1	
A38	A	ROOM IDENTIFICATION	138	AIRLOCK	1	
A39	A	ROOM IDENTIFICATION	136	RANGE	2	
A40	A	ROOM IDENTIFICATION	136	CONTROL ROOM	2	
B	B	WOMEN'S RESTROOM		WOMEN	2	
C	C	MEN'S RESTROOM		MEN	2	
D	D	ROOM IDENTIFICATION		CHANGING ROOM	1	
E1	E	ROOM IDENTIFICATION	111		1	
E2	E	ROOM IDENTIFICATION	112		1	
E3	E	ROOM IDENTIFICATION	113		1	
E4	E	ROOM IDENTIFICATION	114		1	
E5	E	ROOM IDENTIFICATION	115		1	
E6	E	ROOM IDENTIFICATION	116		1	
F1	F	FLOOR INFORMATION	01 FLOOR		3	
F2	F	FLOOR INFORMATION	02 FLOOR		3	
F3	F	FLOOR INFORMATION	03 FLOOR		3	
G1	G	STAIR IDENTIFICATION		STAIR A	3	
G3	G	STAIR IDENTIFICATION		STAIR C	1	
G4	G	STAIR IDENTIFICATION		STAIR C	2	EXTERIOR SIGN
G6	G	STAIR IDENTIFICATION		STAIR A	1	EXTERIOR SIGN
G6	G	STAIR IDENTIFICATION		STAIR C	1	
H	H	CUSTOM LIGHTBOX		RANGE IN USE	2	LIT SIGN
I1	I	VINYL GRAPHIC		RANGE	4	
I2	I	VINYL GRAPHIC		CONTROL ROOM	2	
J1	J	ROOM IDENTIFICATION		WOMEN DIRECTIONAL	1	
J2	J	ROOM IDENTIFICATION		MEN DIRECTIONAL	1	
K1	K	ROOM IDENTIFICATION	T105		1	
K2	K	ROOM IDENTIFICATION	T106		1	
K3	K	ROOM IDENTIFICATION	T107		1	
K4	K	ROOM IDENTIFICATION	T111		4	
K5	K	ROOM IDENTIFICATION	T112		1	
K6	K	ROOM IDENTIFICATION	T115		3	
K7	K	ROOM IDENTIFICATION	T116		3	
K8	K	ROOM IDENTIFICATION	T117		2	
K9	K	ROOM IDENTIFICATION	T118		3	
K10	K	ROOM IDENTIFICATION	T205		2	
K11	K	ROOM IDENTIFICATION	T207		3	
K12	K	ROOM IDENTIFICATION	T208		3	
K13	K	ROOM IDENTIFICATION	T209		2	
K14	K	ROOM IDENTIFICATION	T210		2	
K15	K	ROOM IDENTIFICATION	T211		3	
K16	K	ROOM IDENTIFICATION	T213		3	
K17	K	ROOM IDENTIFICATION	T214		3	
K18	K	ROOM IDENTIFICATION	T215		2	
K19	K	ROOM IDENTIFICATION	T216		2	
K20	K	ROOM IDENTIFICATION	T217		3	
K21	K	ROOM IDENTIFICATION	T219		2	
K22	K	ROOM IDENTIFICATION	T220		2	
K23	K	ROOM IDENTIFICATION	T221		1	
K24	K	ROOM IDENTIFICATION	T113		2	
K25	K	ROOM IDENTIFICATION	T218		2	

AREA OF PROJECT
FIREARMS RANGE BUILDING



RECORD REVISIONS

NUMBER	DESCRIPTION	DATE
1	ADDENDUM 3	10/22/2024

CLIENT:
NEBRASKA DEPARTMENT OF ADMINISTRATIVE SERVICES

PROJECT:
NEBRASKA LAW ENFORCEMENT TRAINING CENTER EXPANSION

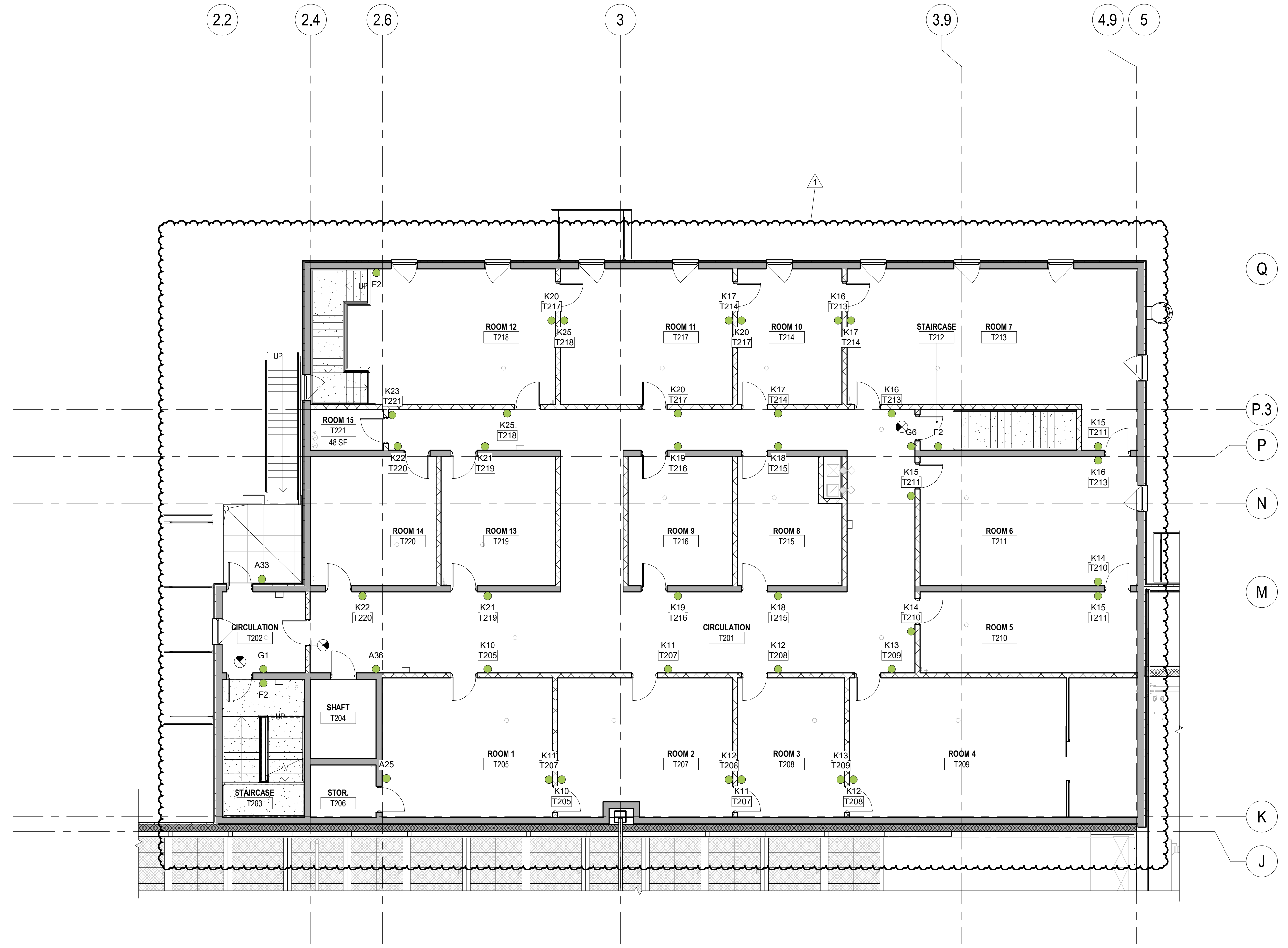
ADDRESS:
3600 N ACADEMY ROAD,
GRAND ISLAND, NE 68801

SEAL & SIGNATURE:

DRAWING TITLE:
2ND FLOOR PLAN - SIGNAGE

PROJECT NO: 50163918
DATE: 08/01/24
PHASE: ISSUED FOR CONSTRUCTION
DRAWN BY: TDN | CHECKED BY: ME
DRAWING NUMBER:

FR-A-803



1 2ND FLOOR PLAN PART - SIGNAGE
SCALE: 1/8" = 1'-0"

SIGN LEGEND	
	ROOM SIGN
	WALL TEXT/SYMBOL
	RANGE IN USE SIGN
	EXIT SIGN - FOR COORDINATION ONLY

COORDINATING ARCHITECT
ARCHITECT OF RECORD - EVOC BUILDING

Dewberry

DEWBERRY ARCHITECTS, INC.
132 North York St #2C
Evanston, IL 60126-3070
P. 847-695-5840

DESIGN ARCHITECT & MASTERPLANNER
ARCHITECT OF RECORD - FIREARMS BLDG.

TACTICAL DESIGN NORTH

TACTICAL DESIGN NORTH, INC.
231 E. Buffalo St #602
Milwaukee, WI 53202
P. 414-909-8586

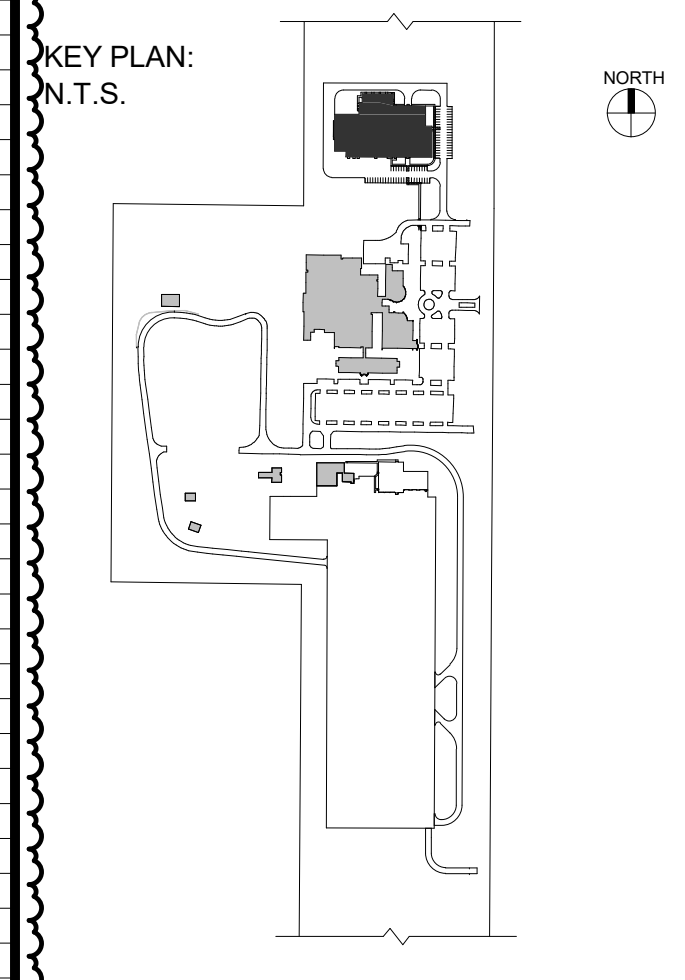
ENGINEERS OF RECORD:

HR

HR ARCHITECTURE, INC.
1917 South 67th St
Omaha, NE 68106
P. 402-393-1000

SIGN SCHEDULE						
MARK	SIGN TYPE	SIGN	ROOM #	SIGNAGE TEXT	QTY	COMMENTS
A1	A	ROOM IDENTIFICATION	103	CLASSROOM	2	
A2	A	ROOM IDENTIFICATION	104	CLASSROOM	2	
A3	A	ROOM IDENTIFICATION	105	STORAGE	1	
A4	A	ROOM IDENTIFICATION	106	STORAGE	1	
A5	A	ROOM IDENTIFICATION	109	OFFICES	2	
A6	A	ROOM IDENTIFICATION	110	CONFERENCE ROOM	1	
A7	A	ROOM IDENTIFICATION	121	WEAPONS CLEANING ROOM	1	
A8	A	ROOM IDENTIFICATION	121	WEAPONS CLEANING CLOSET	1	
A9	A	ROOM IDENTIFICATION	122	WEAPONS CLEANING CLOSET	1	
A10	A	ROOM IDENTIFICATION	146	SUPPLY	1	
A11	A	ROOM IDENTIFICATION	124	JANITOR'S CLOSET	2	
A12	A	ROOM IDENTIFICATION	126	MDF	1	
A13	A	ROOM IDENTIFICATION	127	WEAPONS VAULT	1	
A14	A	ROOM IDENTIFICATION	131	VEHICLE VESTIBULE	1	
A15	A	ROOM IDENTIFICATION	132	BRASS STORAGE	1	
A16	A	ROOM IDENTIFICATION	133	AMMUNITION STORAGE	1	
A17	A	ROOM IDENTIFICATION	134	TARGET STORAGE	1	
A18	A	ROOM IDENTIFICATION	139	RANGE CLEANING ROOM	1	
A19	A	ROOM IDENTIFICATION	140	TARGET STORAGE	1	
A20	A	ROOM IDENTIFICATION	141	TARGET STORAGE	1	
A21	A	ROOM IDENTIFICATION	147	AIR HANDLING UNIT	1	
A22	A	ROOM IDENTIFICATION	T104	STORAGE	1	
A23	A	ROOM IDENTIFICATION	T101	TAC HOUSE	1	
A24	A	ROOM IDENTIFICATION	T108	STORAGE	1	
A25	A	ROOM IDENTIFICATION	T206	STORAGE	1	
A26	A	ROOM IDENTIFICATION	142	ELECTRICAL ROOM	2	EXTERIOR SIGN
A27	A	ROOM IDENTIFICATION	145	MECHANICAL ROOM	1	EXTERIOR SIGN
A28	A	ROOM IDENTIFICATION	131	VEHICLE VESTIBULE	1	EXTERIOR SIGN
A29	A	ROOM IDENTIFICATION	133	AMMUNITION STORAGE	1	EXTERIOR SIGN
A30	A	ROOM IDENTIFICATION	143	FIRE PROTECTION	1	EXTERIOR SIGN
A31	A	ROOM IDENTIFICATION	T109	MECHANICAL	1	EXTERIOR SIGN
A32	A	ROOM IDENTIFICATION	T101	TAC HOUSE	1	EXTERIOR SIGN
A33	A	ROOM IDENTIFICATION	T202	TAC HOUSE	1	EXTERIOR SIGN
A34	A	ROOM IDENTIFICATION	T304	STORAGE	1	EXTERIOR SIGN
A35	A	ROOM IDENTIFICATION	T301	TAC HOUSE	1	EXTERIOR SIGN
A36	A	ROOM IDENTIFICATION		SHAFT	3	
A37	A	ROOM IDENTIFICATION	135	AIRLOCK	1	
A38	A	ROOM IDENTIFICATION	138	AIRLOCK	1	
A39	A	ROOM IDENTIFICATION	136	RANGE	2	
A40	A	ROOM IDENTIFICATION	136	CONTROL ROOM	2	
B	B	WOMEN'S RESTROOM		WOMEN	2	
C	C	MEN'S RESTROOM		MEN	2	
D	D	ROOM IDENTIFICATION		CHANGING ROOM	1	
E1	E	ROOM IDENTIFICATION	111		1	
E2	E	ROOM IDENTIFICATION	112		1	
E3	E	ROOM IDENTIFICATION	113		1	
E4	E	ROOM IDENTIFICATION	114		1	
E5	E	ROOM IDENTIFICATION	115		1	
E6	E	ROOM IDENTIFICATION	116		1	
F1	F	FLOOR INFORMATION		01 FLOOR	3	
F2	F	FLOOR INFORMATION		02 FLOOR	3	
F3	F	FLOOR INFORMATION		03 FLOOR	1	
G1	G	STAIR IDENTIFICATION		STAIR A	3	
G3	G	STAIR IDENTIFICATION		STAIR C	1	
G3	G	STAIR IDENTIFICATION		STAIR C	2	EXTERIOR SIGN
G4	G	STAIR IDENTIFICATION		STAIR A	1	EXTERIOR SIGN
G6	G	STAIR IDENTIFICATION		STAIR C	1	
H	H	CUSTOM LIGHTBOX		RANGE IN USE	2	LIT SIGN
I1	I	VINYL GRAPHIC		RANGE	4	EXTERIOR SIGN
I2	I	VINYL GRAPHIC		CONTROL ROOM	2	
J1	J	ROOM IDENTIFICATION		WOMEN DIRECTIONAL	1	
J2	J	ROOM IDENTIFICATION		MEN DIRECTIONAL	1	
K1	K	ROOM IDENTIFICATION	T105		1	
K2	K	ROOM IDENTIFICATION	T106		1	
K3	K	ROOM IDENTIFICATION	T107		1	
K4	K	ROOM IDENTIFICATION	T111		4	
K5	K	ROOM IDENTIFICATION	T112		1	
K6	K	ROOM IDENTIFICATION	T115		3	
K7	K	ROOM IDENTIFICATION	T116		3	
K8	K	ROOM IDENTIFICATION	T117		2	
K9	K	ROOM IDENTIFICATION	T118		3	
K10	K	ROOM IDENTIFICATION	T205		2	
K11	K	ROOM IDENTIFICATION	T207		3	
K12	K	ROOM IDENTIFICATION	T208		3	
K13	K	ROOM IDENTIFICATION	T209		2	
K14	K	ROOM IDENTIFICATION	T210		2	
K15	K	ROOM IDENTIFICATION	T211		3	
K16	K	ROOM IDENTIFICATION	T213		3	
K17	K	ROOM IDENTIFICATION	T214		3	
K18	K	ROOM IDENTIFICATION	T215		2	
K19	K	ROOM IDENTIFICATION	T216		2	
K20	K	ROOM IDENTIFICATION	T217		3	
K21	K	ROOM IDENTIFICATION	T219		2	
K22	K	ROOM IDENTIFICATION	T220		2	
K23	K	ROOM IDENTIFICATION	T221		1	
K24	K	ROOM IDENTIFICATION	T113		2	
K25	K	ROOM IDENTIFICATION	T218		2	

AREA OF PROJECT
FIREARMS RANGE BUILDING



RECORD REVISIONS		
NUMBER	DESCRIPTION	DATE
1	ADDENDUM 3	10/2/2024

CLIENT:
NEBRASKA DEPARTMENT OF ADMINISTRATIVE SERVICES

PROJECT:
NEBRASKA LAW ENFORCEMENT TRAINING CENTER EXPANSION

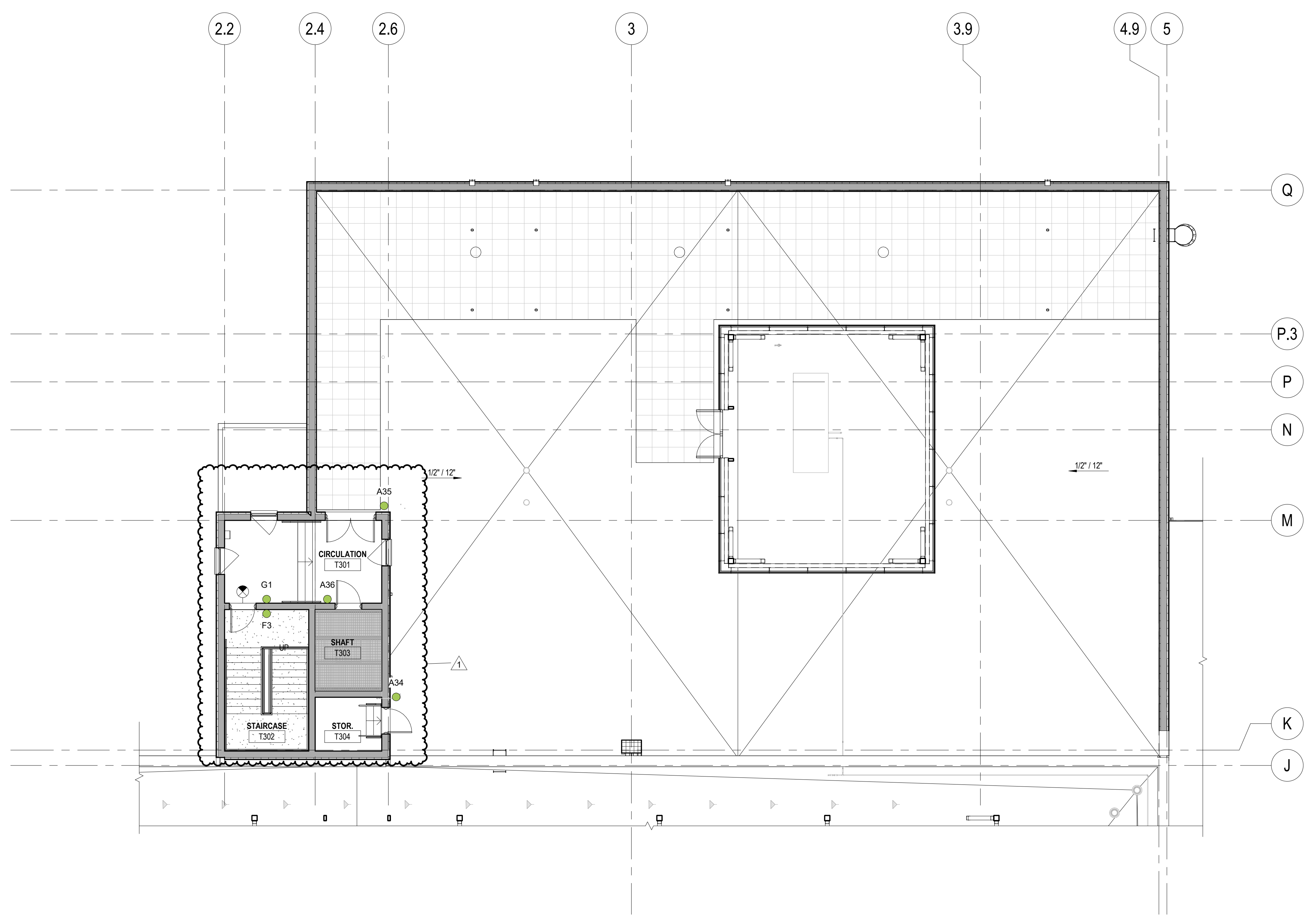
ADDRESS:
3600 N ACADEMY ROAD, GRAND ISLAND, NE 68801

SEAL & SIGNATURE:

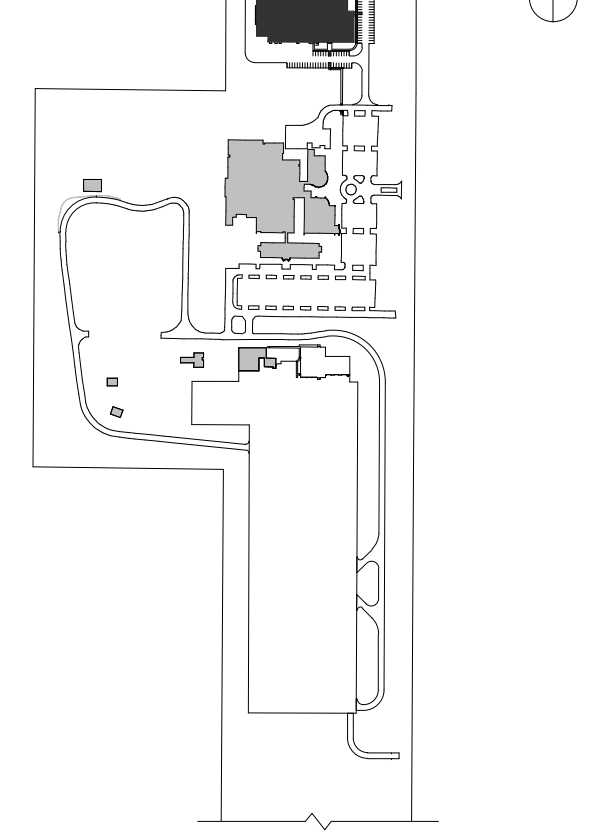
DRAWING TITLE:
3RD FLOOR PLAN - SIGNAGE

PROJECT NO. 50163918
DATE: 08/01/24
PHASE: ISSUED FOR CONSTRUCTION
DRAWN BY: TDN | CHECKED BY: ME
DRAWING NUMBER:

FR-A-804



1 3RD FLOOR PLAN - SIGNAGE
SCALE: 1/8" = 1'-0"



RECORD REVISIONS		
NUMBER	DESCRIPTION	DATE
1	ADDENDUM 3	10/2/2024

CLIENT:
NEBRASKA DEPARTMENT OF ADMINISTRATIVE SERVICES

PROJECT:
NEBRASKA LAW ENFORCEMENT TRAINING CENTER EXPANSION

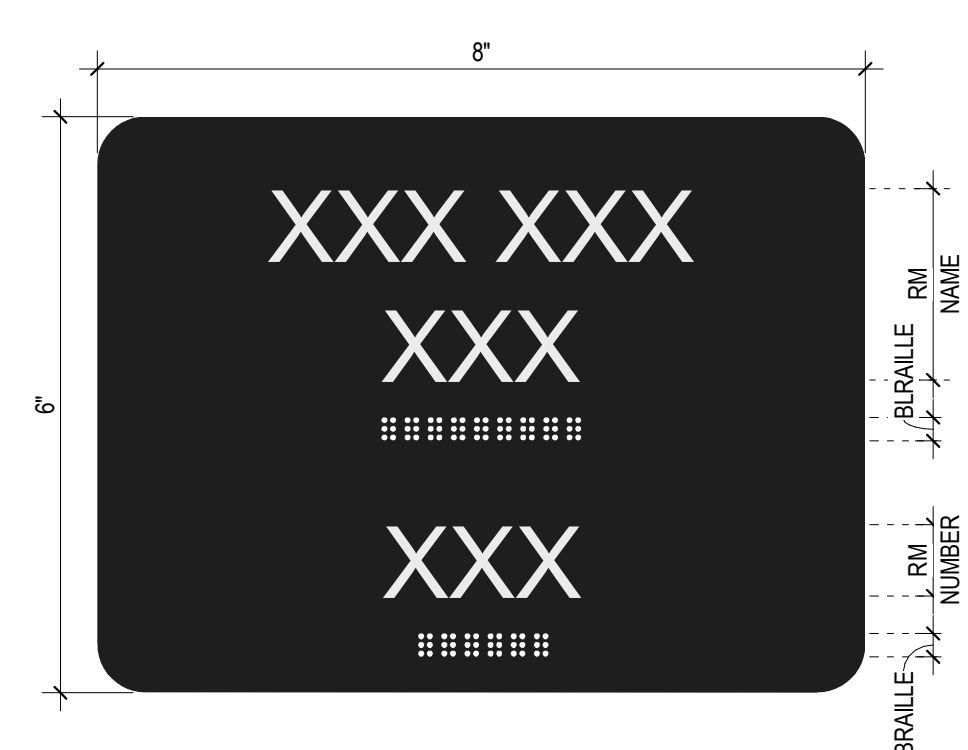
ADDRESS:
3600 N ACADEMY ROAD,
GRAND ISLAND, NE 68801

SEAL & SIGNATURE:

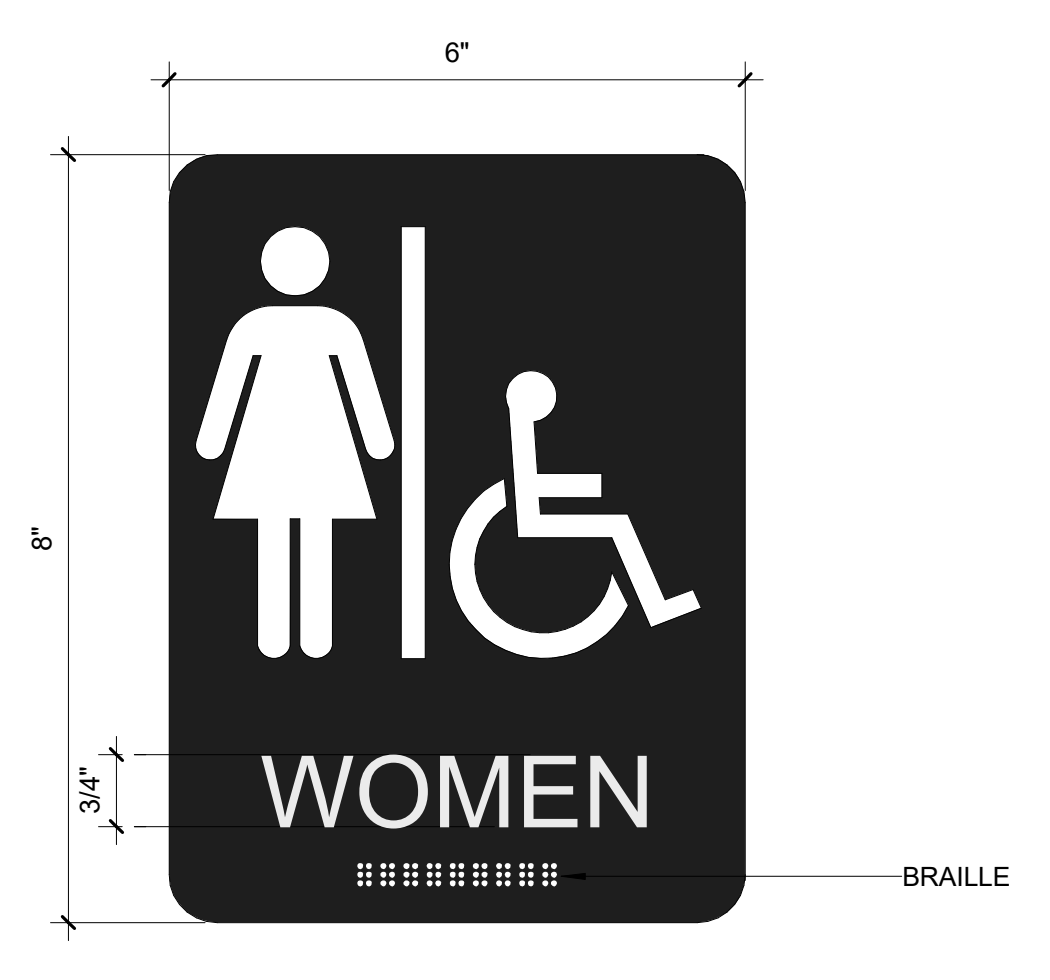
DRAWING TITLE:
SIGNAGE DETAILS

PROJECT NO: 50163918
DATE: 08/01/24
PHASE: ISSUED FOR CONSTRUCTION
DRAWN BY: TDN | CHECKED BY: ME
DRAWING NUMBER:

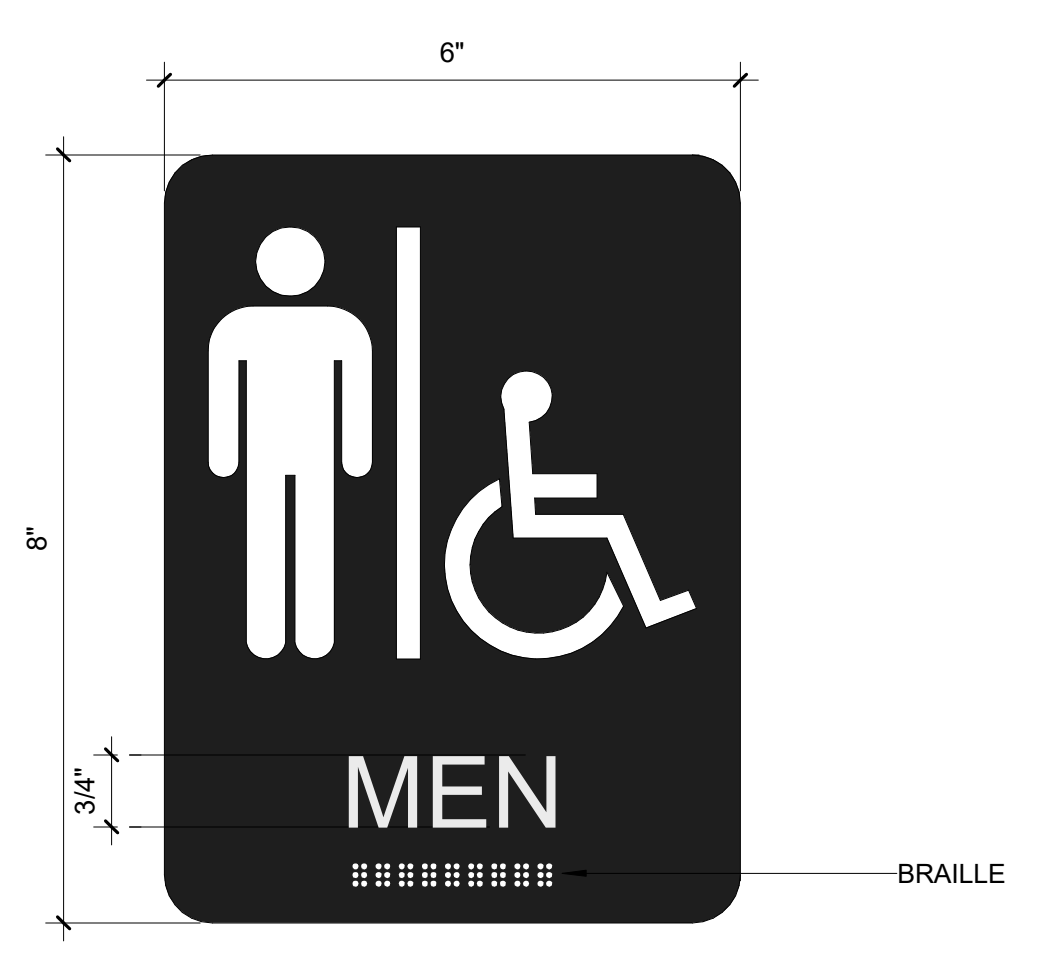
FR-A-810



1 TYPE A - ROOM ID SIGN
SCALE: 6" = 1'-0"



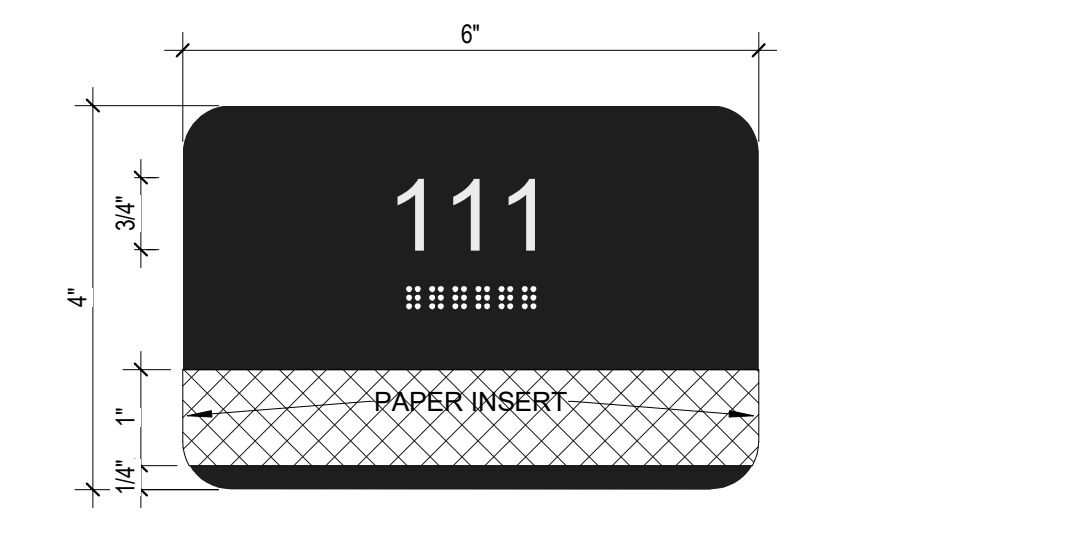
2 TYPE B - WOMENS TOILET SIGN
SCALE: 6" = 1'-0"



3 TYPE C - MENS TOILET SIGN
SCALE: 6" = 1'-0"



4 TYPE D - CHANGING ROOM SIGN
SCALE: 6" = 1'-0"



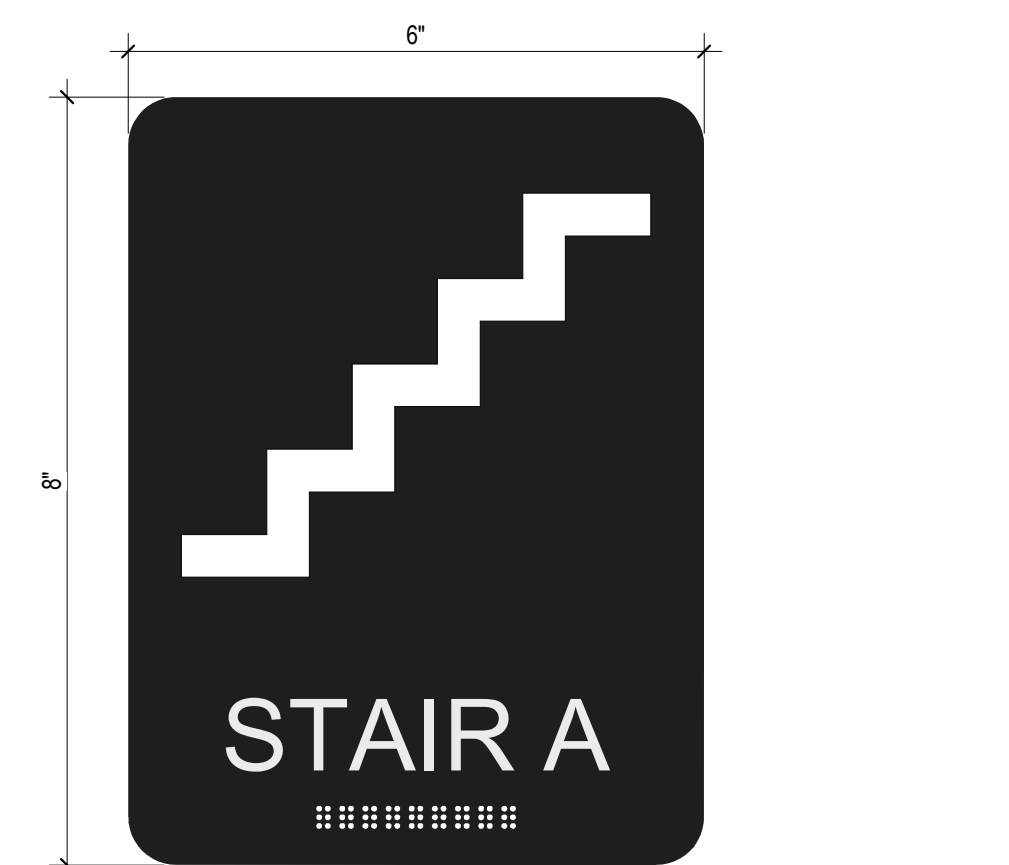
5 TYPE E - OFFICE ID SIGN
SCALE: 6" = 1'-0"

SIGN TYPE: A TO H

SIGN SIZE:	AS SHOWN IN DETAIL
SIGN TYPE:	ASPEN STANDARD SIGN DESIGN
SIGN COLOR:	BLACK
FACE THICKNESS:	1/16"
FACE EDGE:	ROUNDED
APPLIQUE COLOR:	WHITE
APPLIQUE TEXT TYPE:	ARIAL
BRAILLE JUSTIFIED:	CENTERED TO TEXT
MOUNTING INFO:	DOUBLE SIDE 3M VHB



6 TYPE F - FLOOR INFORMATION SIGN
SCALE: 6" = 1'-0"



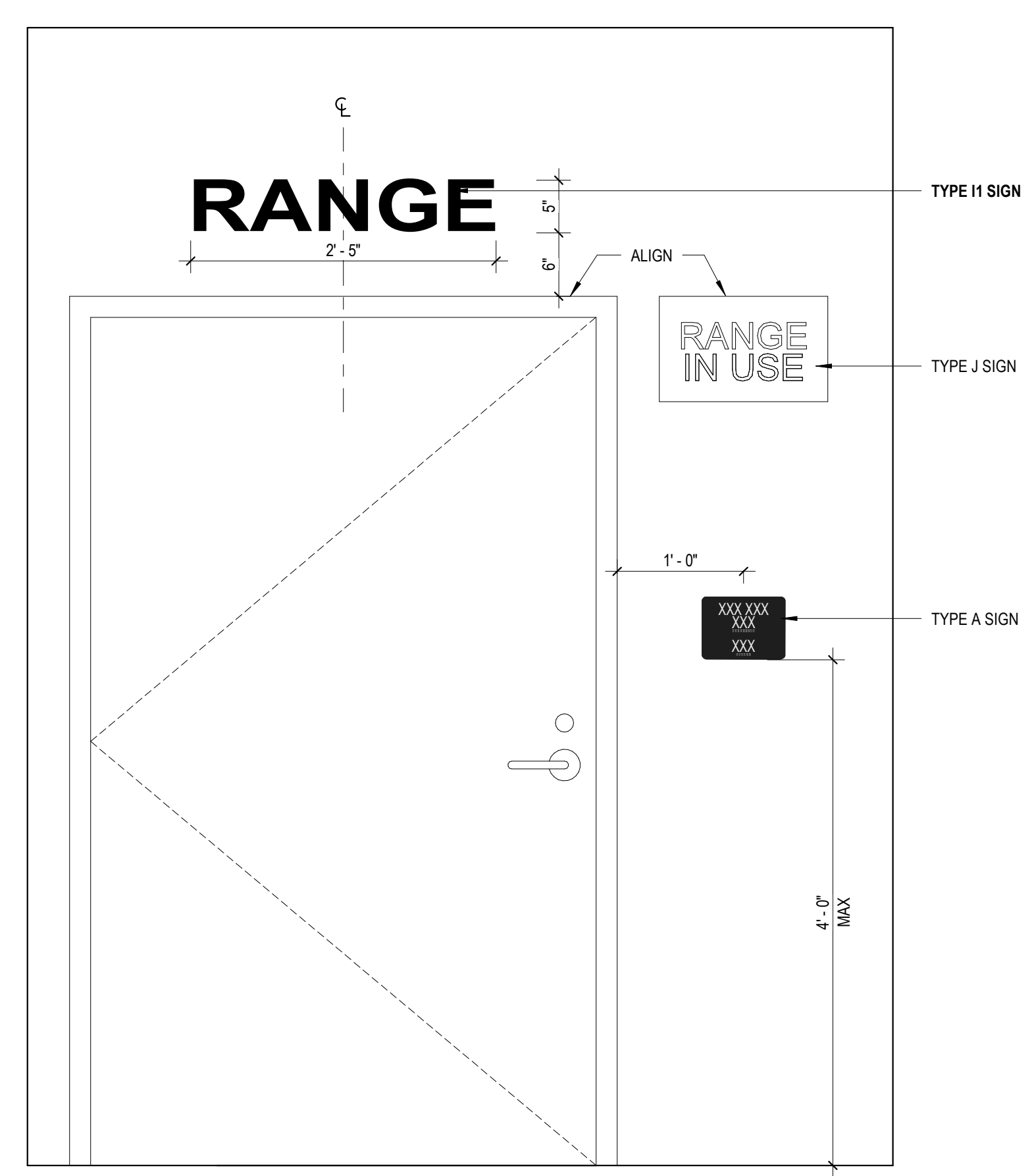
7 TYPE G - STAIR ID SIGN
SCALE: 6" = 1'-0"



8 TYPE H - MENS TOILET SIGN
SCALE: 6" = 1'-0"



9 TYPE H - WOMENS TOILET SIGN
SCALE: 6" = 1'-0"



10 TYPE I - RANGE SIGN
SCALE: 1" = 1'-0"

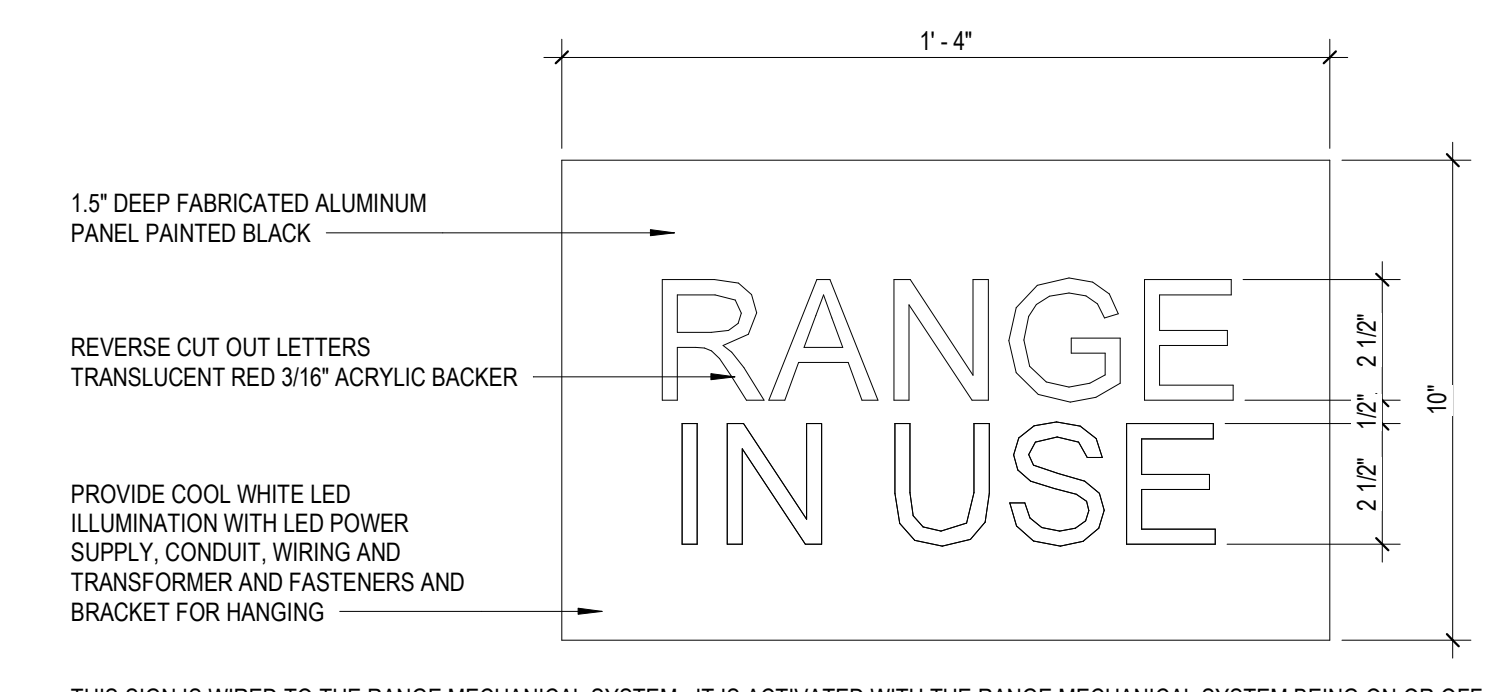
SIGN TYPE: I

SIGN SIZE:	AS SHOWN IN DETAIL
SIGN TYPE:	VINYL DIE-CUT LETTERING
TEXT TYPE:	ARIAL BOLD
SIGN COLOR:	BLACK
INSTALLATION:	CENTER ABOVE DOOR

CONTROL ROOM
2'-10"

SIGN TYPE: J

FONT:	ARIAL NARROW BOLD
-------	-------------------



THIS SIGN IS WIRED TO THE RANGE MECHANICAL SYSTEM. IT IS ACTIVATED WITH THE RANGE MECHANICAL SYSTEM BEING ON OR OFF.

11 TYPE J - RANGE LIGHTBOX SIGN
SCALE: 3" = 1'-0"

GENERAL HVAC NOTES

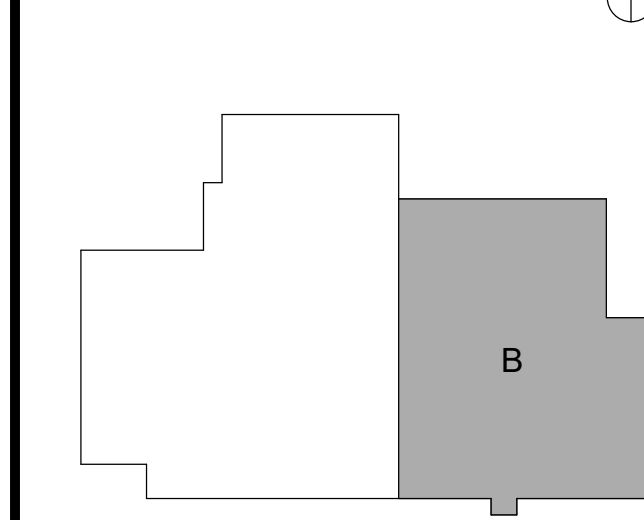
- A CONTRACTOR IS TO COORDINATE ALL WORK OF ALL TRADES AND COORDINATE WORKING TIME AND METHODS WITH THE OWNER TO INSURE THAT THE MINIMUM DISTURBANCE TO FACILITY FUNCTION WILL OCCUR.
- B CONTRACT DRAWINGS FOR MECHANICAL WORK ARE IN PART DIAGRAMMATIC, INTENDED TO CONVEY THE BASIS OF DESIGN INTENT AND INDICATE GENERAL ARRANGEMENT OF EQUIPMENT, DUCTS, CONDUITS, PIPING, ETC. AND APPROXIMATE SIZES AND LOCATIONS OF EQUIPMENT AND OUTLETS. CONTRACTOR SHALL ATTEMPT TO FOLLOW THESE DRAWINGS IN LAYING OUT WORK. CONSULT WITH CONSTRUCTION DRAWINGS TO FAMILIARIZE WITH ALL CONDITIONS AND SHALL VERIFY CLEARANCES AND DIMENSIONS. COORDINATE WORK WITH ALL OTHER TRADES AS CONDITIONS REQUIRE.
- C UNLESS SIZING IS INDICATED ON PLANS, LOW PRESSURE SUPPLY AIR DUCTWORK DOWNSTREAM OF AIR TERMINAL UNITS SHALL BE SIZED AT A MAXIMUM OF 10' FRICTION LOSS PER 100 FEET AND A MAXIMUM VELOCITY OF 1500 FPM.
- D CONNECTIONS TO DIFFUSERS, REGISTERS AND GRILLS SHALL BE AS SCHEDULED UNLESS OTHERWISE SHOWN ON THE PLANS.
- E FOR ALL DUCTWORK PENETRATIONS OF 1 HOUR FIRE RATED WALLS THAT DO NOT HAVE A FIRE DAMPER SHOWN, CONTRACTOR SHALL PROVIDE AND INSTALL A THROUGH PENETRATION UL LISTED ASSEMBLY IN ACCORDANCE WITH SPECIFICATION 07 54 00.
- F CONTRACTOR TO COORDINATE LOCATION OF ALL DIFFUSERS AND GRILLS WITH NEW AND EXISTING STRUCTURAL, ARCHITECTURAL, AND ELECTRICAL. ANY DEVIATIONS FROM THAT SHOWN SHALL BE COORDINATED WITH THE ENGINEER.
- G WHERE A SMOKE DAMPER IS INSTALLED WITHIN A DUCT, A SMOKE DETECTOR SHALL BE INSTALLED IN THE DUCT WITHIN 5 FEET OF THE DAMPER WITH NO AIR OUTLETS OR INLETS BETWEEN THE DETECTOR AND THE DAMPER.
- H INSTALL VOLUME DAMPER IN ALL RUNOUTS TO DIFFUSERS AND GRILLS.
- I ALL DUCTWORK AND PIPING IN THE TACTICAL HOUSE SHALL BE HELD AS HIGH AS POSSIBLE AND TIGHT TO WALLS.

KEYNOTES

- 1 DIRECT LINEAR BLADES DOWN FOR ALL LINEAR DIFFUSERS IN CORRIDOR.
- 2 CONNECT 4x30 EA AT TOP OF GUN CLEANING WORKBENCH (TYP. OF 48). COORDINATE POINT OF CONNECTION WITH WORKBENCH MANUFACTURER.

AREA OF PROJECT
FIREARMS RANGE BUILDING

KEY PLAN:
N.T.S.



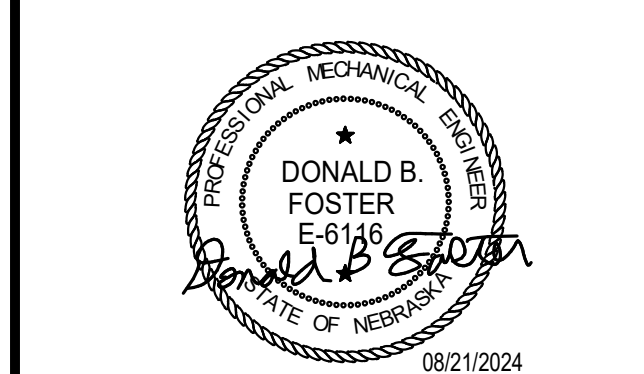
RECORD REVISIONS		
NUMBER	DESCRIPTION	DATE

CLIENT:
NEBRASKA DEPARTMENT OF ADMINISTRATIVE SERVICES

PROJECT:
NEBRASKA LAW ENFORCEMENT TRAINING CENTER EXPANSION

ADDRESS:
3600 N. ACADEMY ROAD,
GRAND ISLAND, NE 68801

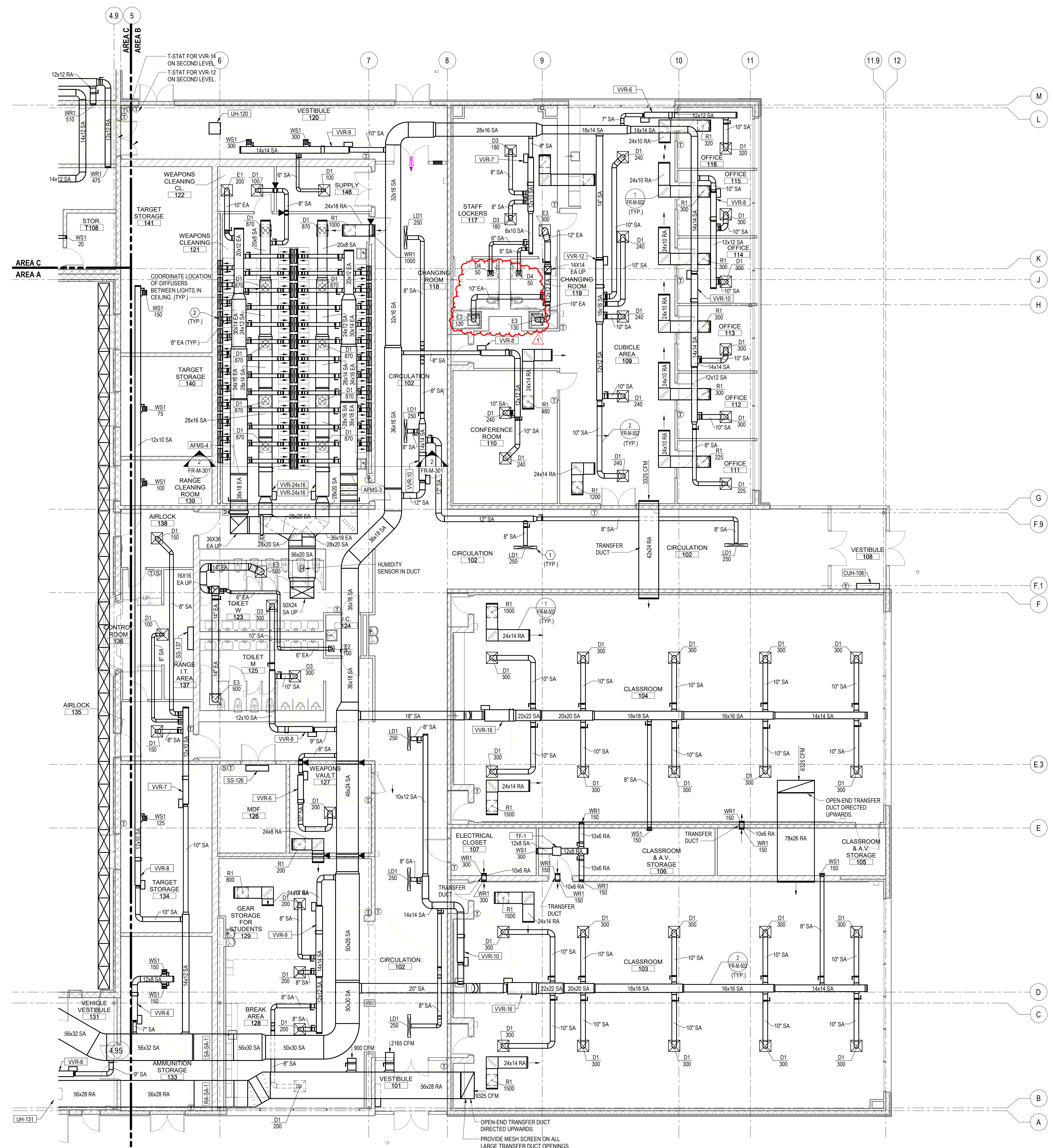
SEAL & SIGNATURE:



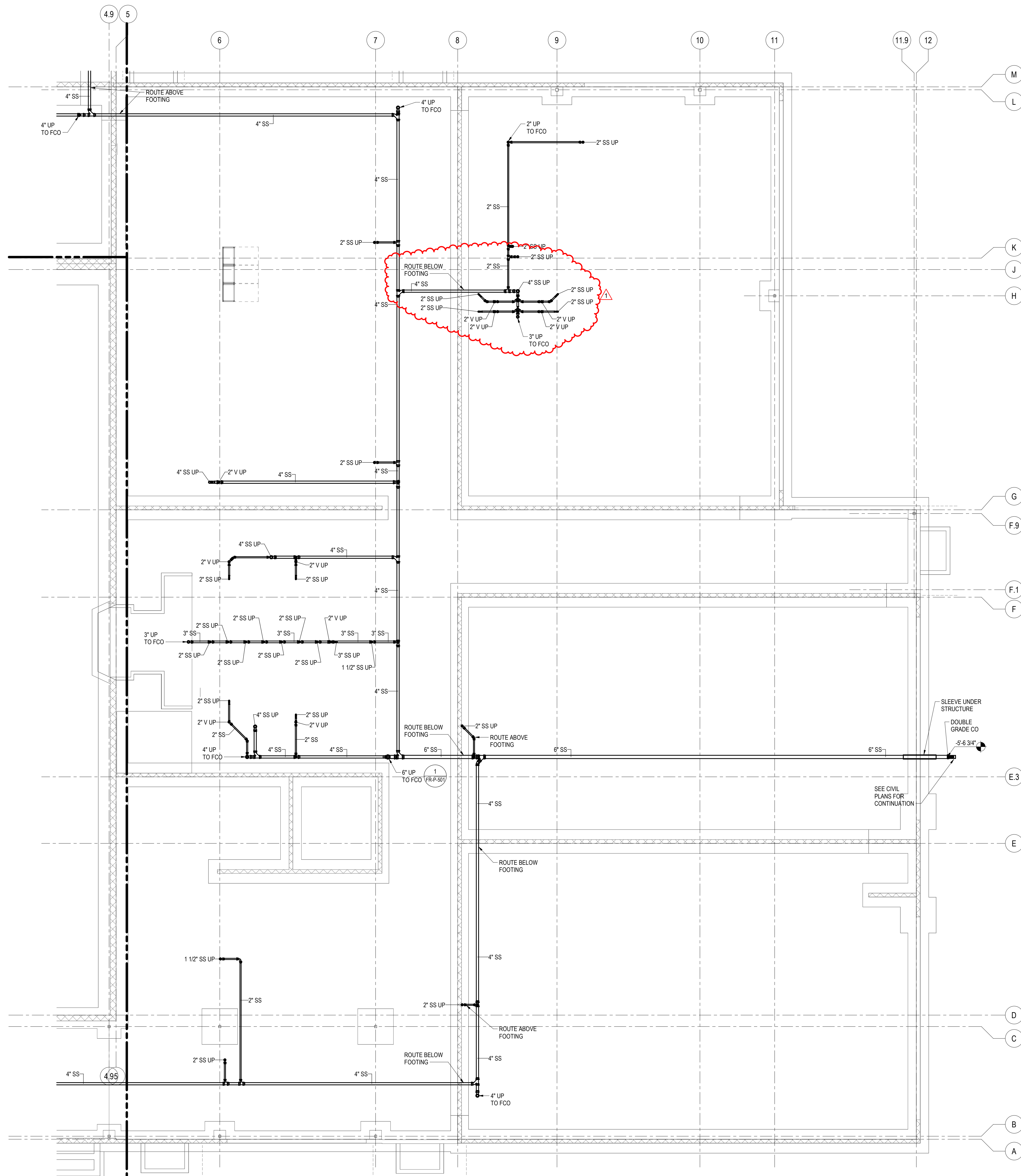
DRAWING TITLE:
FIRST LEVEL HVAC PLAN - AREA B

PROJECT NO: 10371527
DATE: 08/21/24
PHASE: Issue For Construction
DRAWN BY: Kalkwarf | CHECKED BY: Kolm
DRAWING NUMBER:

FR-MH-101B



OPEN-END TRANSFER DUCT DIRECTED UPWARDS.
PROVIDE MESH SCREEN ON ALL LARGE TRANSFER DUCT OPENINGS.



- GENERAL PLUMBING NOTES**
- A THE CONTRACTOR IS RESPONSIBLE TO REVIEW ALL CONSTRUCTION DOCUMENTS AND IS RESPONSIBLE FOR INFORMATION SHOWN.
 - B COORDINATE WORK WITH ALL OTHER TRADES TO AVOID CONFLICTS.
 - C CONTRACT DRAWINGS FOR MECHANICAL WORK ARE IN PART DIAGRAMMATIC, INTENDED TO CONVEY THE BASIS OF DESIGN INTENT AND INDICATE GENERAL ARRANGEMENT OF EQUIPMENT, DUCTS, CONDUITS, PIPING, ETC. AND APPROXIMATE SIZES AND LOCATIONS OF EQUIPMENT AND OUTLETS. CONTRACTOR SHALL ATTEMPT TO FOLLOW THESE DRAWINGS IN LAYING OUT WORK. CONSULT WITH CONSTRUCTION DRAWINGS TO FAMILIARIZE WITH ALL CONDITIONS, AND SHALL VERIFY CLEARANCES AND DIMENSIONS. COORDINATE WORK WITH ALL OTHER TRADES AS CONDITIONS REQUIRE.
 - D THE DRAWINGS ARE NOT INTENDED TO BE SCALED FOR MEASUREMENTS AND SHALL NOT SERVE AS SHOP DRAWINGS.
 - E THE INSTALLATION DETAILS, INSTRUCTIONS AND RECOMMENDATIONS OF THE MANUFACTURER OF THE PRODUCT SHALL FORM THE BASIS OF DESIGN ON THIS PROJECT EXCEPT WHERE SPECIFIC INSTRUCTIONS DESIGNATE OTHERWISE.
 - F EQUIPMENT SHOWN ON THE DRAWINGS AS WELL AS SPACE REQUIREMENTS, ARE BASED ON THE EQUIPMENT SCHEDULED. SHOULD SELECTION OF APPROVED ALTERNATE EQUIPMENT REQUIRE REVISIONS, THIS CONTRACTOR SHALL ACCEPT THE RESPONSIBILITY FOR MAKING THE NECESSARY CHANGES TO ACCOMMODATE SUCH EQUIPMENT. CONTRACTOR SHALL PREPARE REVISIONS OF COORDINATION DRAWINGS FOR APPROVAL BY THE ARCHITECT/ENGINEER PRIOR TO BEGINNING WORK.
 - G ALL HOLES IN WALLS AND FLOORS SHALL BE FILLED AND SEALED TO MAINTAIN THE FIRE AND SMOKE RATING OF THE WALL OR FLOOR.
 - H REFER TO PLUMBING FIXTURE SCHEDULE FOR BRANCHES TO FIXTURES NOT INDICATED ON PLANS.

COORDINATING ARCHITECT
ARCHITECT OF RECORD - EVOC BUILDING

Dewberry

DEWBERRY ARCHITECTS, INC.
132 North York St #2C
Einhurst, IL 60126-3070
P. 847-695-5840

DESIGN ARCHITECT & MASTERPLANNER
ARCHITECT OF RECORD - FIREARMS BLDG.

TACTICAL DESIGN NORTH

TACTICAL DESIGN NORTH, INC.
231 E. Buffalo St #602
Milwaukee, WI 53202
P. 414-909-8586

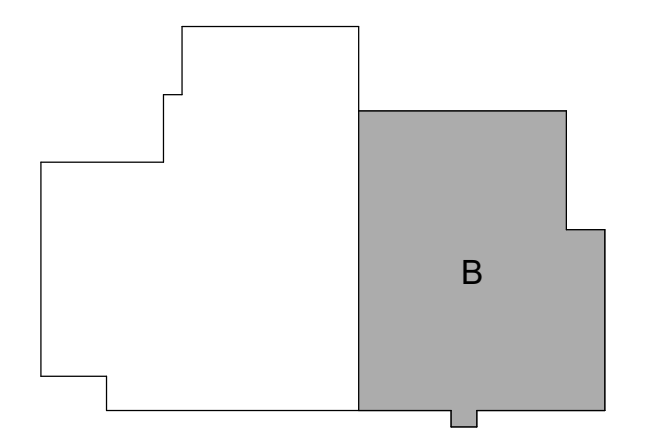
ENGINEERS OF RECORD:

HDR

HDR ARCHITECTURE, INC.
1917 South 67th St.
Omaha, NE 68106
P. 402-399-1000

AREA OF PROJECT
FIREARMS RANGE BUILDING

KEY PLAN:
N.T.S.



RECORD REVISIONS

NUMBER	DESCRIPTION	DATE
1	ADDENDUM #2	9/XX/XX

CLIENT:
NEBRASKA DEPARTMENT OF ADMINISTRATIVE SERVICES

PROJECT:
NEBRASKA LAW ENFORCEMENT TRAINING CENTER EXPANSION

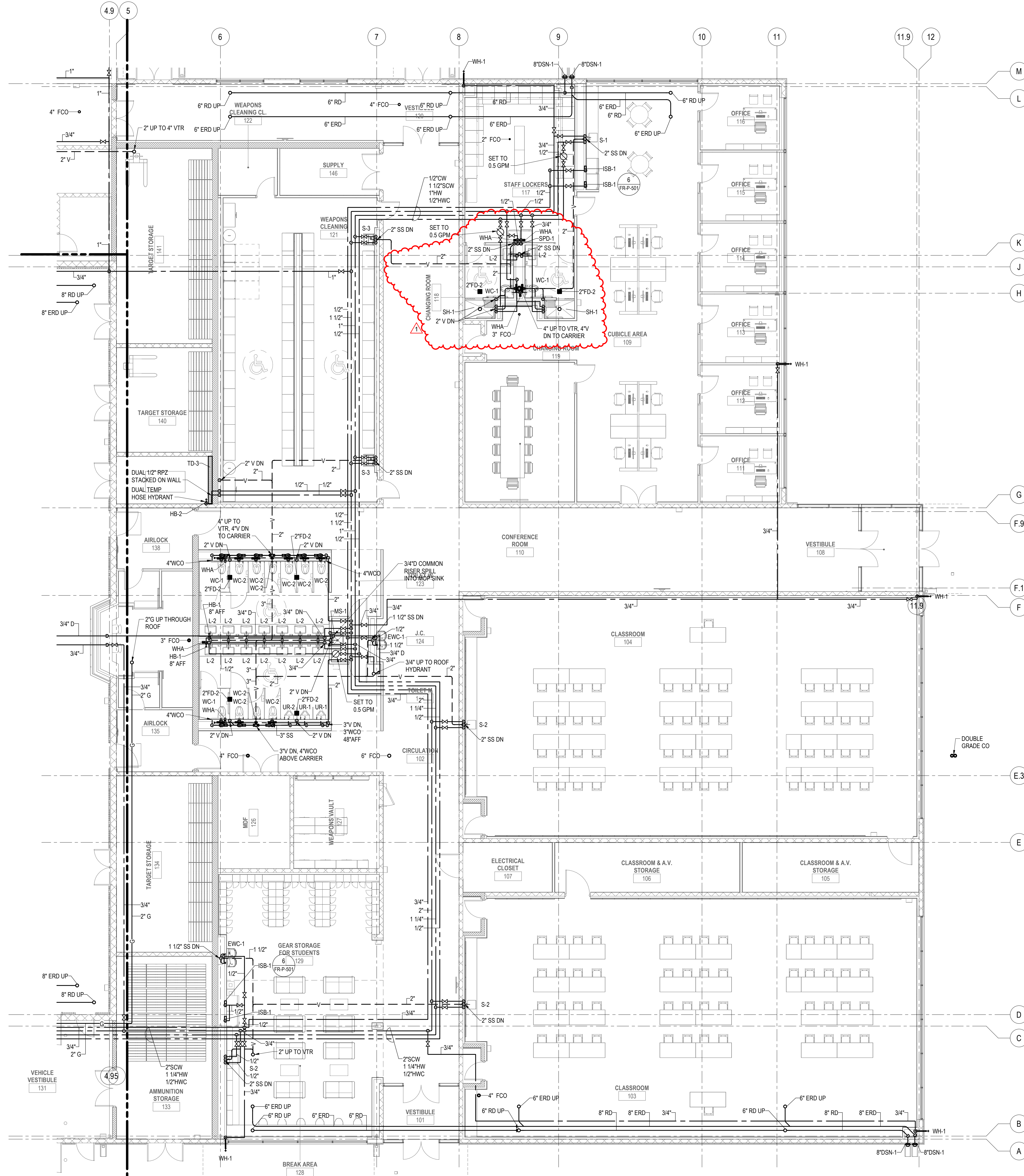
ADDRESS:
3600 N. ACADEMY ROAD, GRAND ISLAND, NE 68801

SEAL & SIGNATURE:

DRAWING TITLE:
FOUNDATION LEVEL PLUMBING PLAN - AREA B

PROJECT NO. 10371527
DATE: 08/21/24
PHASE: Issue For Construction
DRAWN BY: Kyander | CHECKED BY: Kolm
DRAWING NUMBER:

FR-PP-100B



- GENERAL PLUMBING NOTES**
- A THE CONTRACTOR IS RESPONSIBLE TO REVIEW ALL CONSTRUCTION DOCUMENTS AND IS RESPONSIBLE FOR INFORMATION SHOWN.
 - B COORDINATE WORK WITH ALL OTHER TRADES TO AVOID CONFLICTS.
 - C CONTRACT DRAWINGS FOR MECHANICAL WORK ARE IN PART DIAGRAMMATIC, INTENDED TO CONVEY THE BASIS OF DESIGN INTENT AND INDICATE GENERAL ARRANGEMENT OF EQUIPMENT, DUCTS, CONDUITS, PIPING, ETC. AND APPROXIMATE SIZES AND LOCATIONS OF EQUIPMENT AND OUTLETS. CONTRACTOR SHALL ATTEMPT TO FOLLOW THESE DRAWINGS IN LAYING OUT WORK. CONSULT WITH CONSTRUCTION DRAWINGS TO FAMILIARIZE WITH ALL CONDITIONS, AND SHALL VERIFY CLEARANCES AND DIMENSIONS. COORDINATE WORK WITH ALL OTHER TRADES AS CONDITIONS REQUIRE.
 - D THE DRAWINGS ARE NOT INTENDED TO BE SCALED FOR MEASUREMENTS AND SHALL NOT SERVE AS SHOP DRAWINGS.
 - E THE INSTALLATION DETAILS, INSTRUCTIONS AND RECOMMENDATIONS OF THE MANUFACTURER OF THE PRODUCT SHALL FORM THE BASIS OF DESIGN ON THIS PROJECT EXCEPT WHERE SPECIFIC INSTRUCTIONS DESIGNATE OTHERWISE.
 - F EQUIPMENT SHOWN ON THE DRAWINGS AS WELL AS SPACE REQUIREMENTS, ARE BASED ON THE EQUIPMENT SCHEDULED. SHOULD SELECTION OF APPROVED ALTERNATE EQUIPMENT REQUIRE REVISIONS, THIS CONTRACTOR SHALL ACCEPT THE RESPONSIBILITY FOR MAKING THE NECESSARY CHANGES TO ACCOMMODATE SUCH EQUIPMENT. CONTRACTOR SHALL PREPARE REVISIONS OF COORDINATION DRAWINGS FOR APPROVAL BY THE ARCHITECT/ENGINEER PRIOR TO BEGINNING WORK.
 - G ALL HOLES IN WALLS AND FLOORS SHALL BE FILLED AND SEALED TO MAINTAIN THE FIRE AND SMOKE RATING OF THE WALL OR FLOOR.
 - H REFER TO PLUMBING FIXTURE SCHEDULE FOR BRANCHES TO FIXTURES NOT INDICATED ON PLANS.

COORDINATING ARCHITECT
ARCHITECT OF RECORD - EVOC BUILDING

Dewberry

DEWBERRY ARCHITECTS, INC.
132 North York St #2C
Evanston, IL 60126-3070
P. 847-695-6840

DESIGN ARCHITECT & MASTERPLANNER
ARCHITECT OF RECORD - FIREARMS BLDG.

TACTICAL DESIGN NORTH

TACTICAL DESIGN NORTH, INC.
231 E. Buffalo St #602
Milwaukee, WI 53202
P. 414-909-8586

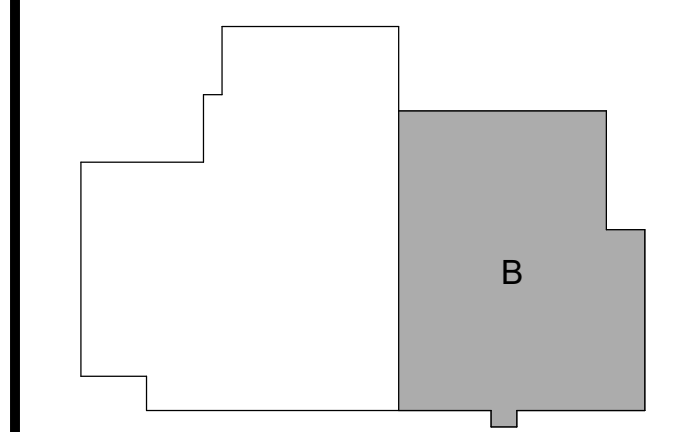
ENGINEERS OF RECORD:

HDR

HDR ARCHITECTURE, INC.
1917 South 67th St.
Omaha, NE 68106
P. 402-399-1000

AREA OF PROJECT
FIREARMS RANGE BUILDING

KEY PLAN:
N.T.S.



RECORD REVISIONS

NUMBER	DESCRIPTION	DATE
1	ADDENDUM #2	9/XX/XX

CLIENT:
NEBRASKA DEPARTMENT OF ADMINISTRATIVE SERVICES

PROJECT:
NEBRASKA LAW ENFORCEMENT TRAINING CENTER EXPANSION

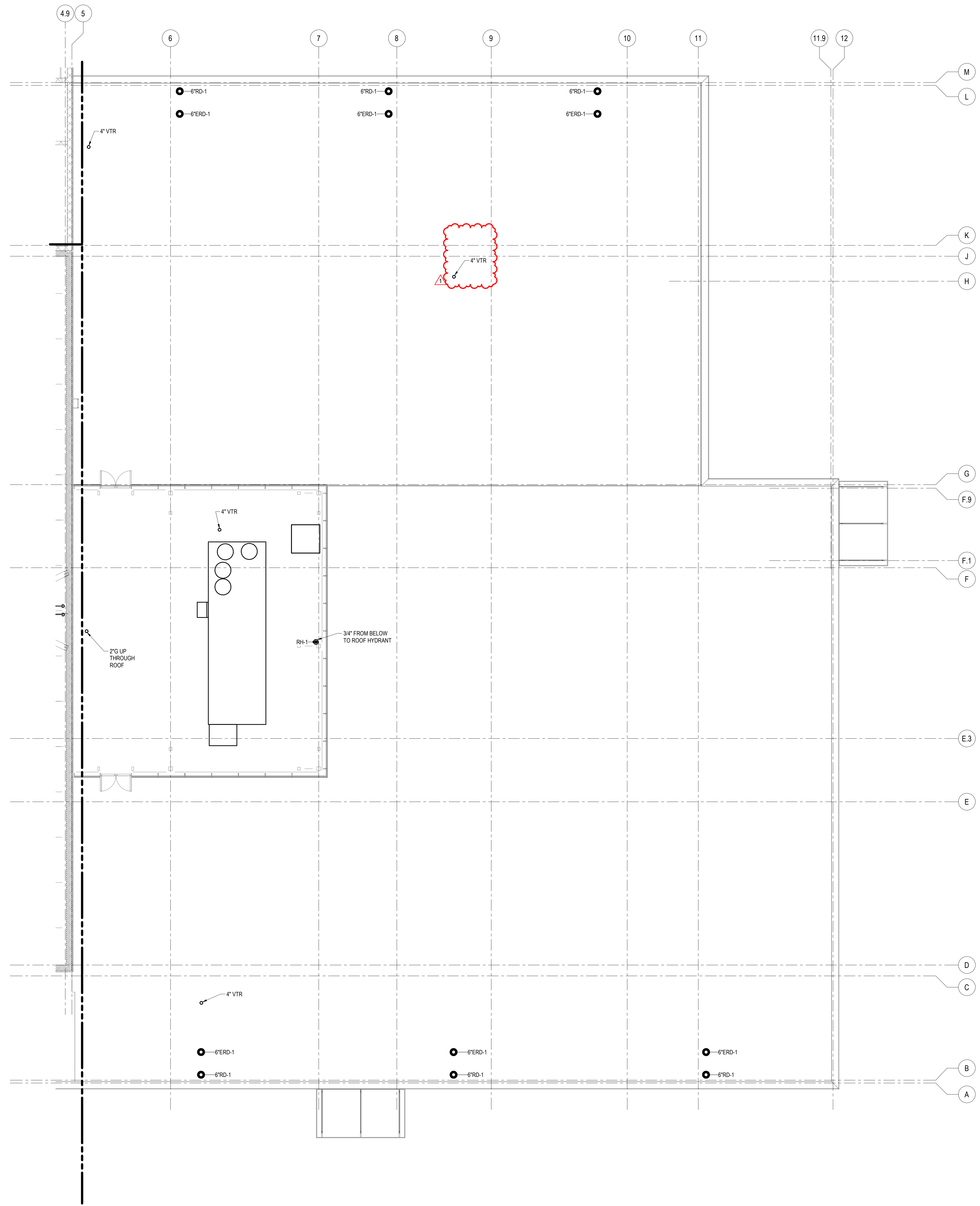
ADDRESS:
3600 N. ACADEMY ROAD, GRAND ISLAND, NE 68801

SEAL & SIGNATURE:

DRAWING TITLE:
FIRST LEVEL PLUMBING PLAN - AREA B

PROJECT NO: 10371527
DATE: 08/21/24
PHASE: Issue For Construction
DRAWN BY: Kyander / CHECKED BY: Kolm
DRAWING NUMBER:

FR-PP-101B



- GENERAL PLUMBING NOTES**
- A THE CONTRACTOR IS RESPONSIBLE TO REVIEW ALL CONSTRUCTION DOCUMENTS AND IS RESPONSIBLE FOR INFORMATION SHOWN.
 - B COORDINATE WORK WITH ALL OTHER TRADES TO AVOID CONFLICTS.
 - C CONTRACT DRAWINGS FOR MECHANICAL WORK ARE IN PART DIAGRAMMATIC, INTENDED TO CONVEY THE BASIS OF DESIGN INTENT AND INDICATE GENERAL ARRANGEMENT OF EQUIPMENT, DUCTS, CONDUTITS, PIPING, ETC. AND APPROXIMATE SIZES AND LOCATIONS OF EQUIPMENT AND OUTLETS. CONTRACTOR SHALL ATTEMPT TO FOLLOW THESE DRAWINGS IN LAYING OUT WORK. CONSULT WITH CONSTRUCTION DRAWINGS TO FAMILIARIZE WITH ALL CONDITIONS, AND SHALL VERIFY CLEARANCES AND DIMENSIONS. COORDINATE WORK WITH ALL OTHER TRADES AS CONDITIONS REQUIRE.
 - D THE DRAWINGS ARE NOT INTENDED TO BE SCALED FOR MEASUREMENTS AND SHALL NOT SERVE AS SHOP DRAWINGS.
 - E THE INSTALLATION DETAILS, INSTRUCTIONS AND RECOMMENDATIONS OF THE MANUFACTURER OF THE PRODUCT SHALL FORM THE BASIS OF DESIGN ON THIS PROJECT EXCEPT WHERE SPECIFIC INSTRUCTIONS DESIGNATE OTHERWISE.
 - F EQUIPMENT SHOWN ON THE DRAWINGS AS WELL AS SPACE REQUIREMENTS, ARE BASED ON THE EQUIPMENT SCHEDULED. SHOULD SELECTION OF APPROVED ALTERNATE EQUIPMENT REQUIRE REVISIONS, THIS CONTRACTOR SHALL ACCEPT THE RESPONSIBILITY FOR MAKING THE NECESSARY CHANGES TO ACCOMMODATE SUCH EQUIPMENT. CONTRACTOR SHALL PREPARE REVISIONS OF COORDINATION DRAWINGS FOR APPROVAL BY THE ARCHITECT/ENGINEER PRIOR TO BEGINNING WORK.
 - G ALL HOLES IN WALLS AND FLOORS SHALL BE FILLED AND SEALED TO MAINTAIN THE FIRE AND SMOKE RATING OF THE WALL OR FLOOR.
 - H REFER TO PLUMBING FIXTURE SCHEDULE FOR BRANCHES TO FIXTURES NOT INDICATED ON PLANS.

COORDINATING ARCHITECT
ARCHITECT OF RECORD - EVOC BUILDING

Dewberry
DEWBERRY ARCHITECTS, INC.
132 North York St #2C
Evanston, IL 60126-3070
P. 847-695-5840

DESIGN ARCHITECT & MASTERPLANNER
ARCHITECT OF RECORD - FIREARMS BLDG.

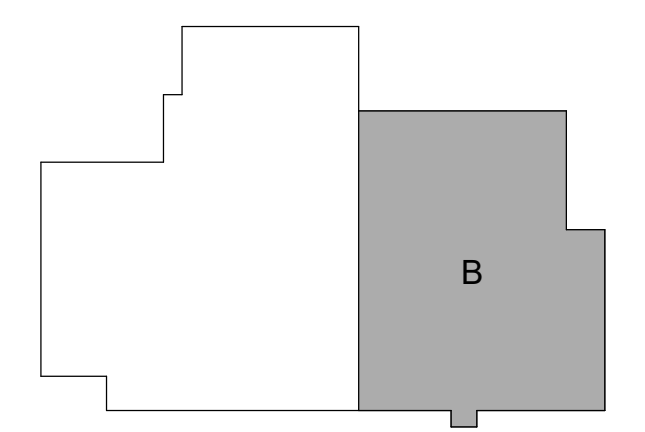
TACTICAL DESIGN NORTH
TACTICAL DESIGN NORTH, INC.
231 E. Buffalo St #602
Milwaukee, WI 53202
P. 414-909-8586

ENGINEERS OF RECORD:

HDR
HDR ARCHITECTURE, INC.
1917 South 67th St
Omaha, NE 68106
P. 402-399-1000

AREA OF PROJECT
FIREARMS RANGE BUILDING

KEY PLAN:
N.T.S.



RECORD REVISIONS

NUMBER	DESCRIPTION	DATE
1	ADDENDUM #2	9/XX/XX

CLIENT:
NEBRASKA DEPARTMENT OF ADMINISTRATIVE SERVICES

PROJECT:
NEBRASKA LAW ENFORCEMENT TRAINING CENTER EXPANSION

ADDRESS:
3600 N. ACADEMY ROAD, GRAND ISLAND, NE 68801

SEAL & SIGNATURE:

DRAWING TITLE:
ROOF LEVEL PLUMBING PLAN - AREA B

PROJECT NO. 10371527
DATE: 08/21/24
PHASE: Issue For Construction
DRAWN BY: Kyander | CHECKED BY: Kolm
DRAWING NUMBER:

FR-PP-102B